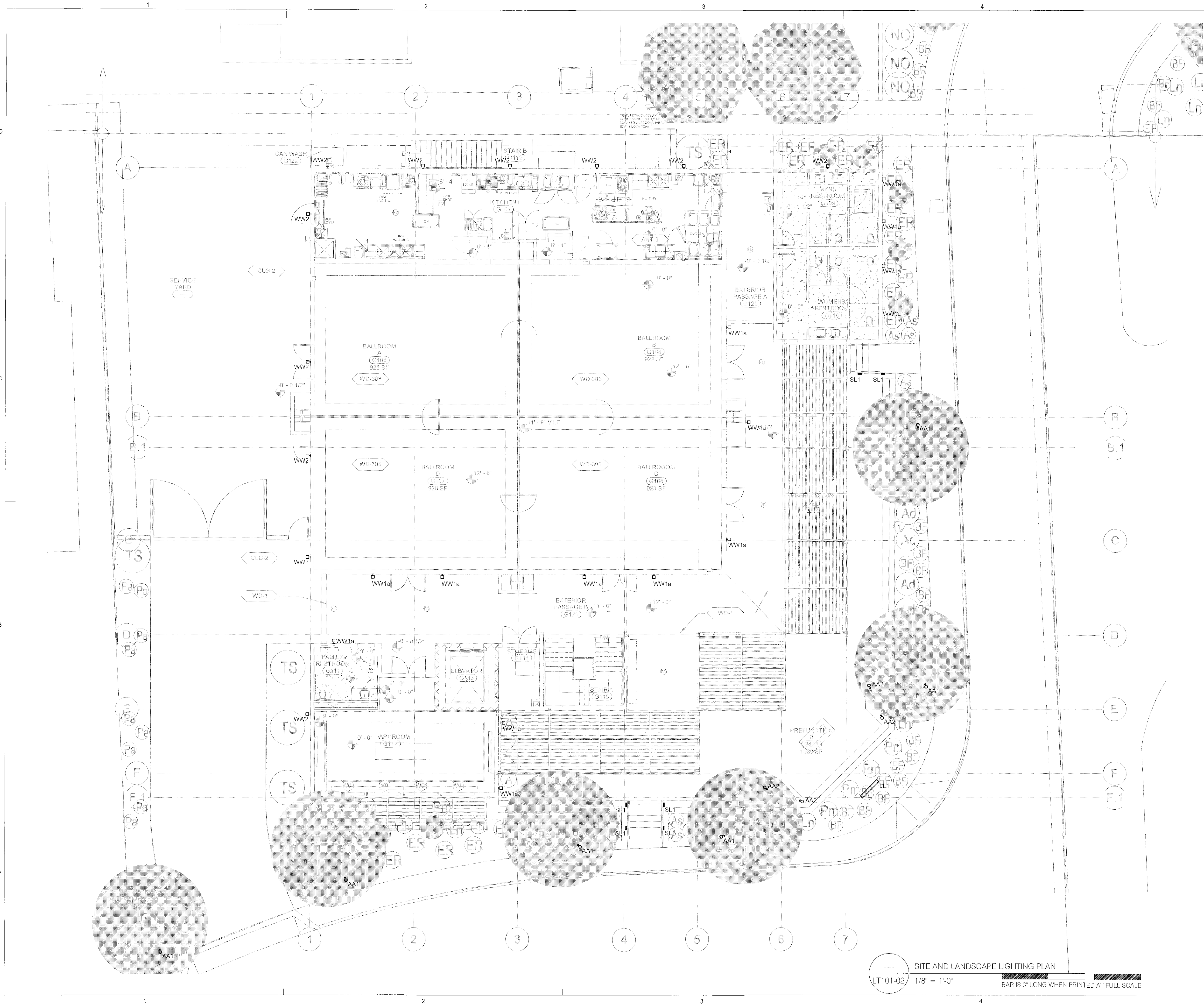


ALL IDEAS, DESIGNS AND ARRANGEMENTS INDICATED ON THESE DRAWINGS ARE THE PROPERTY OF THE ARCHITECT AND ARE TO BE USED IN CONNECTION WITH THIS SPECIFIC PROJECT AND SHALL NOT BE USED OTHERWISE WITHOUT THE EXPRESSED CONSENT OF THE ARCHITECT. THERE SHALL BE NO CHANGES OR DEVIATION FROM THE DRAWINGS OR ACCOMPANYING SPECIFICATION WITHOUT THE EXPRESSED CONSENT OF THE ARCHITECT.



GENERAL NOTES:

1. VERIFY MOUNTING LOCATIONS AND HEIGHTS OF ALL DEVICES WITH ARCHITECT PRIOR TO INSTALLATION.
2. ALL FIXTURE AND CONTROL LOCATIONS MUST BE VERIFIED BY THE LIGHTING CONSULTANT AT THE JOBSITE PRIOR TO ROUGH-IN.
3. LOOPING INDICATES CONTROL ZONE DESIGN INTENT ONLY. REFER TO ELECTRICAL DRAWINGS FOR DIMMING, SWITCHING AND CIRCUITRY INFORMATION.
4. THE CONTRACTOR IS RESPONSIBLE FOR PROVIDING ALL LABOR AND EQUIPMENT THAT IS NECESSARY FOR THE FOCUS AIMING OF ADJUSTABLE LIGHTING FIXTURES AND THE PROGRAMMING OF LIGHTING PRESETS OR EFFECTS PER THE DIRECTION OF THE LIGHTING DESIGN CONSULTANT.
5. ELECTRICAL CONTRACTOR, FIXTURE SUPPLIER, AND LAMP SUPPLIER MUST VERIFY THAT ALL LED LAMPS ARE COMPATIBLE WITH FIXTURE TRIM HOUSINGS, LAMP SOCKETS, LOW VOLTAGE TRANSFORMERS, AND ELECTRICAL DIMMING SYSTEMS PRIOR TO PLACING ANY LIGHTING EQUIPMENT ORDERS AFTER FIXTURE SHOP DRAWING SUBMITTALS ARE APPROVED. LAMPS SHOULD BE OPERABLE AT FULL OR DIMMED INTENSITY WITH NO VISUALLY PERCEIVED FLICKERING WHEN ALL LAMPS ON THE CIRCUIT ARE ENERGIZED.

delawie
Architecture • Experience • Integrity
1516 Morena Blvd.
San Diego, CA 92110
(619) 295-6690
Fax (619) 299-5513
delawie.com

THE RUIZKA COMPANY
11 Emerald Circle, Suite 200
Irvine, California 92614
PH (949) 263-3379 Fax (949) 263-9141
www.ruizka.com
LIGHTING DESIGNERS • SHADING CONSULTANTS

THIS DRAWING IS A PART OF THE LIGHTING DESIGN CONSULTANT'S DESIGN. THE RUIZKA COMPANY DOES NOT ASSUME RESPONSIBILITY FOR THE ACCURACY OF THE INFORMATION PROVIDED BY OTHERS. THE RUIZKA COMPANY WILL NOT BE HELD RESPONSIBLE FOR THE INABILITY OF CONTRACTORS OR SUBMITTALS TO EXECUTE THE DESIGN PLANS. ALL ELECTRICAL INFORMATION AND LOCAL ENERGY CODE COMPLIANCE FORMS TO BE PROVIDED BY A LICENSED ELECTRICAL ENGINEER OR ELECTRICAL CONTRACTOR. ALL EQUIPMENT ATTACHMENT DETAILS AND STRUCTURAL LOAD CALCULATIONS MUST BE PROVIDED BY A LICENSED STRUCTURAL ENGINEER. FOR LIGHTING DESIGN INFORMATION ONLY.

#71-SA-2015
COTTONWOODS RESORT & SUITES - CONFERENCE CENTER
6114 NORTH SCOTTSDALE RD.
SCOTTSDALE AZ 85253

PROJECT NO. 14192		
REV. NO.	DATE ISSUED	REASON
C	08/26/15	PR 2-01 PERMIT RESUBMITTAL
D	09/30/15	PERMIT RESUBMITTAL

PERMIT SUBMITTAL-CP2
JULY 01, 2015

Sheet Title
SITE AND LANDSCAPE LIGHTING PLAN

Sheet No.
LT101-02

APPROVED
FINAL PLANS PLANNING
10/23/2015
DATE
APPROVED BY

1. VERIFY MOUNTING LOCATIONS AND HEIGHTS OF ALL DEVICES WITH ARCHITECT PRIOR TO INSTALLATION.
2. ALL FIXTURE AND CONTROL LOCATIONS MUST BE VERIFIED BY THE LIGHTING CONSULTANT AT THE JOBSITE PRIOR TO ROUGH-IN.
3. LOOPING INDICATES CONTROL ZONE DESIGN INTENT ONLY. REFER TO ELECTRICAL DRAWINGS FOR DIMMING, SWITCHING AND CIRCUITRY INFORMATION.
4. THE CONTRACTOR IS RESPONSIBLE FOR PROVIDING ALL LABOR AND EQUIPMENT THAT IS NECESSARY FOR THE FOCUS AIMING OF ADJUSTABLE LIGHTING FIXTURES AND THE PROGRAMMING OF LIGHTING PRESETS OR EFFECTS PER THE DIRECTION OF THE LIGHTING DESIGN CONSULTANT.
5. ELECTRICAL CONTRACTOR, FIXTURE SUPPLIER, AND LAMP SUPPLIER MUST VERIFY THAT ALL LED LAMPS ARE COMPATIBLE WITH FIXTURE TRIM HOUSINGS, AND SOCKETS, LED DRIVERS, PAGE TRANSFORMERS, AND ELECTRICAL DIMMING SYSTEMS PRIOR TO PLACING ANY LIGHTING EQUIPMENT ORDERS AFTER FIXTURE SHOP DRAWING SUBMITTALS ARE APPROVED. LAMPS SHOULD BE OPERABLE AT FULL OR DIMMED INTENSITY WITHOUT VISUALLY PERCEIVED FLICKERING WHEN ALL LAMPS ON THE CIRCUIT ARE ENERGIZED.

THE
RUZIKA
COMPANY

2 Executive Circle, Suite 200
Irvine, California 92614
PH (949) 263-3415 Fax (949) 256-0131
www.ruzika.com

LIGHTING DESIGNERS • THEATRE CONSULTANTS

THIS DRAWING RELATES TO LIGHTING DESIGN INTENT ONLY. THE USER COMPANY DOES NOT ACCEPT RESPONSIBILITY FOR THE STRUCTURAL INTEGRITY, BUILDING, ROOFING, CONSULTING, FABRICATION, MATERIAL, OR EQUIPMENT.

THE USER COMPANY WILL NOT BE HELD RESPONSIBLE FOR THE INABILITY OF CONTRACTORS OR BUILDERS TO EXECUTE THE DESIGN PLANS.

ALL ELECTRICAL CONNECTIONS AND LOCAL WIRING SHALL BE IN ACCORDANCE WITH THE CODES AND STANDARDS THAT SHALL BE PROVIDED BY A LICENSED ELECTRICAL ENGINEER OR ELECTRICAL CONTRACTOR.

ALL EQUIPMENT AT ADDITIONAL DETAILS AND STRUCTURAL LOAD CONDITIONS MUST BE PROVIDED BY A LICENSED STRUCTURAL ENGINEER.

FOR LIGHTING DESIGN INFORMATION ON ON

#71-SA-2015
COTTONWOODS RESORT &
SUITES - CONFERENCE
CENTER
6114 NORTH SCOTTSDALE RD,
SCOTTSDALE AZ 85253

PROJECT NO. 1419

REV NO.	DATE ISSUED	REASON
C	08/26/15	PR 2-01 PERMIT RESUBMITTAL
D	09/30/15	PERMIT RESUBMITTAL

PERMIT SUBMITTAL-CP2
JULY 01, 2015

Sheet Title

**SITE AND
LANDSCAPE
LIGHTING RCP**

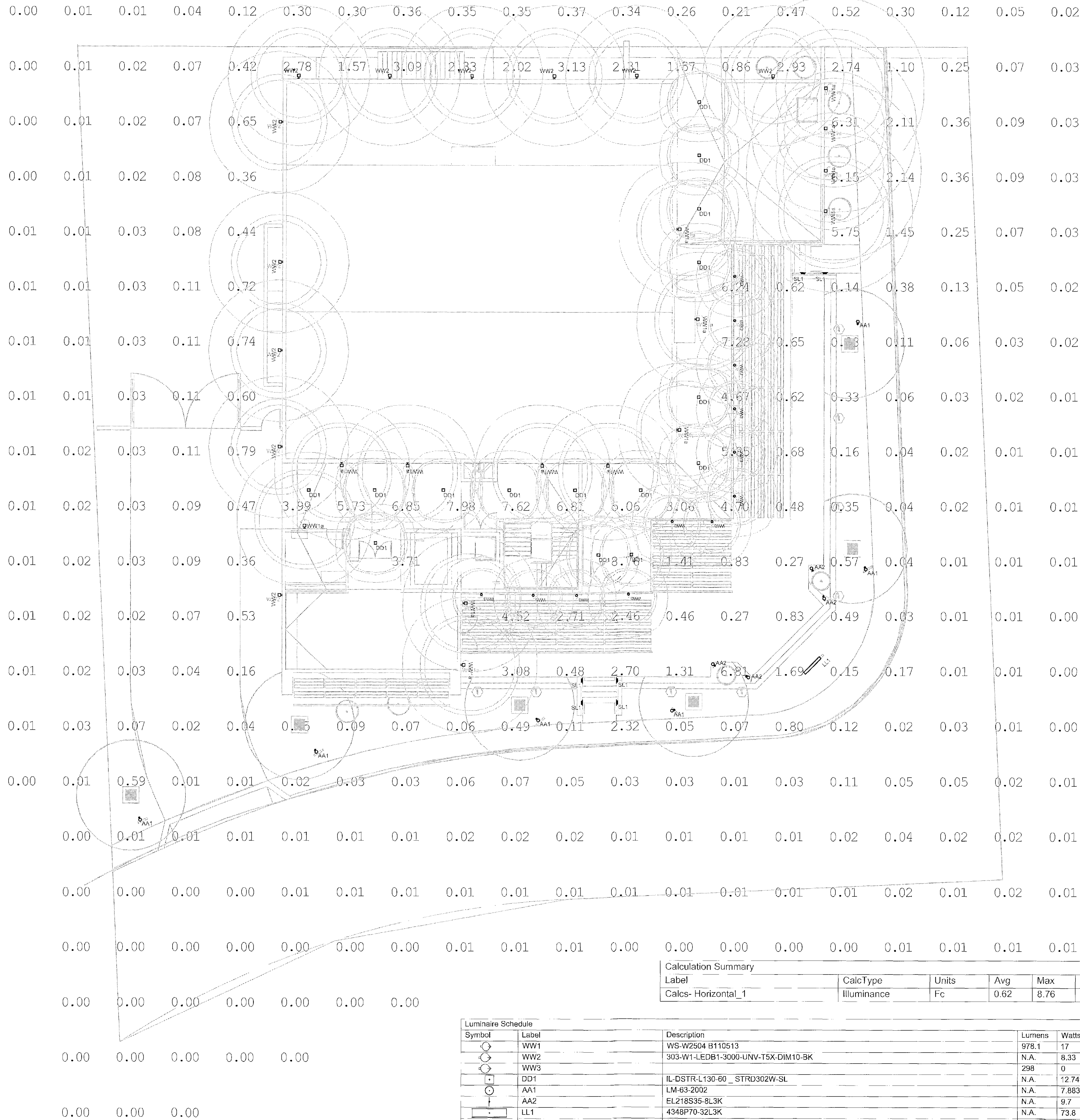
Sheet No.

LT102-02

APPROVED
FINAL PLANS PLANNING
10/23/2015
DATE APPROVED

LT102-02 SITE AND LANDSCAPE LIGHTING RCP
1/8" = 1'-0"
BAR IS 3" LONG WHEN PRINTED AT FULL SCALE

ALL IDEAS, DESIGNS AND ARRANGEMENTS INDICATED ON THESE DRAWINGS ARE THE PROPERTY OF THE ARCHITECT AND ARE TO BE USED IN CONNECTION WITH THIS SPECIFIC PROJECT AND SHALL NOT BE USED OTHERWISE WITHOUT THE EXPRESSED CONSENT OF THE ARCHITECT. THERE SHALL BE NO CHANGES OR DEVIATION FROM THE DRAWINGS OR ACCOMPANYING SPECIFICATION WITHOUT THE EXPRESSED CONSENT OF THE ARCHITECT.



delawie
Architecture • Experience • Integrity
1515 Morena Blvd.
San Diego, CA 92110
(619) 299-6890
Fax (619) 299-5513
delawie.com

THE RUIZIKA COMPANY
2 Franklin Circle, Suite 200
Irvine, California 92614
Ph: (949) 263-3470 Fax: (949) 260-5161
www.ruizika.com
LIGHTING DESIGNERS • THEATRICAL CONSULTANTS

THIS DRAWING RELATES TO LIGHTING DESIGN. THE RUIZIKA COMPANY DOES NOT ASSUME RESPONSIBILITY FOR STRUCTURAL, INTERIORS, BUILDING, MECHANICAL, ELECTRICAL, PLUMBING, OR ANY OTHER CONSTRUCTION. THE RUIZIKA COMPANY WILL NOT BE HELD RESPONSIBLE FOR THE LIABILITY OF CONTRACTORS. USE SUBJECT TO ADOPTING THE DESIGN PLANS.
ALL ELECTRICAL INFORMATION AND LOCAL ENERGY CODE COMPLIANCE SHALL BE PROVIDED BY A LICENSED ELECTRICAL ENGINEER OR ELECTRICAL CONTRACTOR.
ALL EQUIPMENT ATTACHMENTS SHALL BE PROVIDED BY A LICENSED STRUCTURAL ENGINEER.
FOR LIGHTING DESIGN INFORMATION ONLY.

#71-SA-2015
COTTONWOODS RESORT & SUITES - CONFERENCE CENTER
6114 NORTH SCOTTSDALE RD.
SCOTTSDALE AZ 85253

PROJECT NO.			14192
REV NO.	DATE ISSUED	REASON	
C	08/26/15	PR 2-01 PERMIT RESUBMITTAL	
D	09/30/15	PERMIT RESUBMITTAL	

PERMIT SUBMITTAL-CP2
JULY 01, 2015

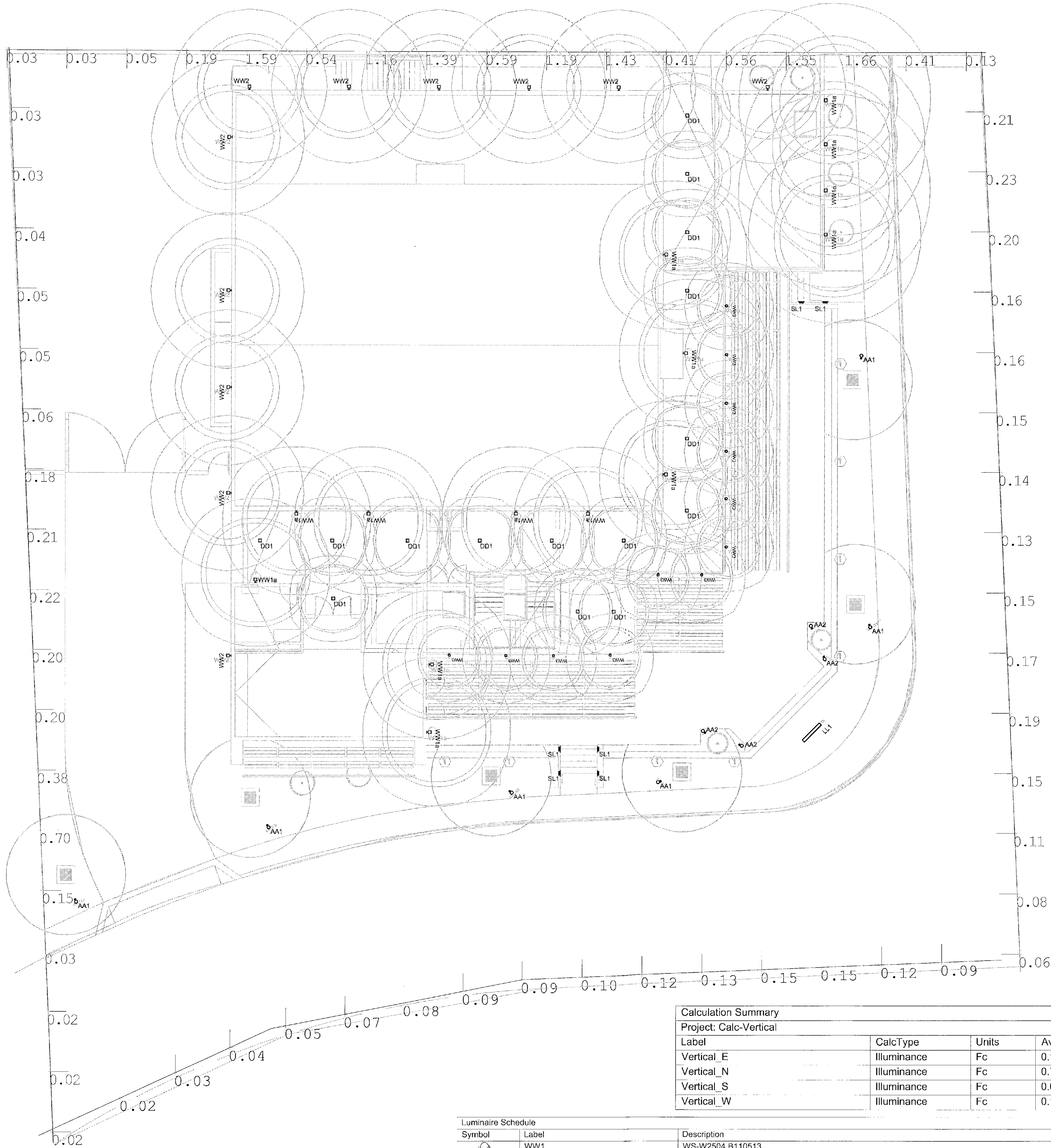
Sheet Title
LIGHTING CALCULATIONS

Sheet No.
LT500-02

APPROVED
FINAL PLANS PLANNING
10/23/2015
DATE
APPROVED BY

HORIZONTAL LIGHTING CALCULATIONS
LT500-02
3/32" = 1'-0"
BAR IS 3" LONG WHEN PRINTED AT FULL SCALE

ALL IDEAS, DESIGNS AND ARRANGEMENTS INDICATED ON THESE DRAWINGS ARE THE PROPERTY OF THE ARCHITECT AND ARE TO BE USED IN CONNECTION WITH THIS SPECIFIC PROJECT AND SHALL NOT BE USED OTHERWISE WITHOUT THE EXPRESSED CONSENT OF THE ARCHITECT. THERE SHALL BE NO CHANGES OR DEVIATION FROM THE DRAWINGS OR ACCOMPANYING SPECIFICATION WITHOUT THE EXPRESSED CONSENT OF THE ARCHITECT.



Calculation Summary					
Project: Calc-Vertical					
Label	CalcType	Units	Avg	Max	Min
Vertical_E	Illuminance	Fc	0.15	0.23	0.06
Vertical_N	Illuminance	Fc	0.76	1.66	0.03
Vertical_S	Illuminance	Fc	0.09	0.15	0.02
Vertical_W	Illuminance	Fc	0.14	0.70	0.02

Luminaire Schedule					
Symbol	Label	Description	Lumens	Watts	LLF
○	WW1	WS-W2504 B110513	978.1	17	1.000
○	WW2	303-W1-LEDB1-3000-UNV-T5X-DIM10-BK	N.A.	8.33	1.000
○	WW3		298	0	1.000
□	DD1	IL-DSTR-L130-60_STRD302W-SL	N.A.	12.749	1.000
○	AA1	LM-63-2002	N.A.	7.883	1.000
○	AA2	EL218S35-8L3K	N.A.	9.7	1.000
□	LL1	4348P/0-32L3K	N.A.	73.8	1.000
+	SL1	3065LED	N.A.	11	1.000

VERTICAL LIGHTING CALCULATIONS
LT501-02 3/32" = 1'-0"
BAR IS 3" LONG WHEN PRINTED AT FULL SCALE

APPROVED
FINAL PLANS PLANNING
10/27/2015
DATE
JABARWEN BY

delawie
Architecture • Experience • Integrity
1515 Morena Blvd.
San Diego, CA 92110
(619) 299-6690
Fax (619) 299-5513
delawie.com

THE
RUZIKA
COMPANY
2 Executive Center, Suite 200
Irvine, California 92614
P: (949) 253-3475 Fax: (949) 253-9131
www.ruzika.com
LIGHTING DESIGNERS • ELECTRICAL CONSULTANTS

THIS DRAWING RELATES TO LIGHTING DESIGN INTENT ONLY. THE RUZIKA COMPANY DOES NOT ASSUME RESPONSIBILITY FOR THE DESIGN, CONSTRUCTION, FABRICATION, MATERIAL OR EQUIPMENT.
THE RUZIKA COMPANY WILL NOT BE HELD RESPONSIBLE FOR THE LIABILITY OF CONTRACTORS OR MANUFACTURERS TO THE USER.
ALL ELECTRICAL INFORMATION AND LOCAL ENERGY CODE COMPLIANCE FORMS TO BE PROVIDED BY A LICENSED ELECTRICAL ENGINEER OR ELECTRICAL CONTRACTOR.
ALL DIMENSION ATTACHMENT DETAILS AND STRUCTURAL LOAD CALCULATIONS MUST BE PROVIDED BY A LICENSED STRUCTURAL ENGINEER.
FOR LIGHTING DESIGN INFORMATION ONLY

#71-SA-2015
COTTONWOODS RESORT & SUITES - CONFERENCE CENTER
6114 NORTH SCOTTSDALE RD.
SCOTTSDALE AZ 85253

PROJECT NO.			14192
REV NO.	DATE ISSUED	REASON	
C	08/26/15	PR 2-01 PERMIT RESUBMITTAL	
D	09/30/15	PERMIT RESUBMITTAL	

PERMIT SUBMITTAL-CP2
JULY 01, 2015

Sheet Title
LIGHTING CALCULATIONS

Sheet No.

LT501-02