

**Full Size
8.5 x 11
11 x 17
(site plan, landscape, elevations)**

GENERAL ELEVATION NOTES

- A. ELEVATION 0'-0" IN ARCHITECTURAL DRAWINGS CORRESPOND TO FINISH FLOOR IN THE SITE/CIVIL DRAWINGS.
- B. REFERENCE SYSTEM NOTES FOR ICC-ER REFERENCES TO VARIOUS CONSTRUCTION MATERIALS.
- C. SEE A3 FOR WINDOW SCHEDULE
- D. SEE A3 FOR DOOR SCHEDULE

ELEVATION SHEET NOTES

- 1. NOT USED
- 2. METAL CHANNEL LINTEL
- 3. CABLE SUPPORT
- 4. AWNING BEAM SUPPORT; REFERENCE DETAIL
- 5. DOOR; REFERENCE DOOR SCHEDULE
- 6. WINDOW(S); REFERENCE WINDOW SCHEDULE
- 7. ORNAMENTAL METAL PATIO GATE; REFERENCE 11/A2
- 8. PAINTED METAL CANOPY; REFERENCE DETAIL
- 9. NOT USED
- 10. DASHED LINE REPRESENTS PATIO WALL IN FRONT OF ELEVATION PLAN
- 11. WALL MOUNTED LIGHT FIXTURE; REF. ELECTRICAL
- 12. STUCCO EXPANSION JOINT
- 13. LINE OF ADJACENT BUILDING; PROVIDE STUCCO FINISH ON NEW BUILDING 12" BEYOND THE EDGE OF EXISTING BUILDING AND PAINT MASONRY TO MATCH STUCCO

COLOR SCHEDULE

THE FOLLOWING COLORS AND MANUFACTURER'S ARE LISTED SOLELY TO ESTABLISH A LEVEL OF QUALITY. OTHER MANUFACTURER'S MAY SUBMIT PRODUCTS OF EQUAL VALUE OR QUALITY FOR PRIOR APPROVAL BY THE ARCHITECT AND OWNER.

- M1 NOT USED THIS PROJECT
- M2 8" x 8" x 16" INTEGRALLY COLORED CMU BLOCK; SANDBLAST FINISH TO EXPOSE AGGREGATES AS MANUFACTURED BY SUPERLITE; RAKE HORIZONTAL JOINTS; FLUSH VERTICAL JOINTS TYPICAL AT WALLS (COLOR SELECTED BY ARCHITECT)
- S1 STUCCO, ICI PAINTS 667 MACADEMIA NUT (L.R. 74)
- S2 STUCCO, ICI PAINTS 652 HAZELWOOD (L.R. 65)
- P1 STEEL, PAINTED ICI PAINTS 453 MONTERREY CLIFFS (L.R. 14)
- A1 NOT USED
- A2 FABRIC AWNING, SUNBRELLA MARINE GRADE, #4653 BUTTERCUP

SYMBOL LEGEND

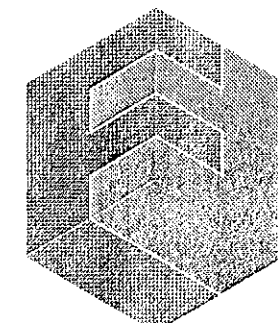
- S1 FINISH CALLOUT, REF. COLOR SCHEDULE
- 4 DOOR MARK, REF. DOOR SCHEDULE, SHEET A3
- A WINDOW MARK, REF. WINDOW SCHEDULE, SHEET A3
- 10 SHEET NOTE, REF. NOTES THIS SHEET
- C/A6 SECTION MARK, REF. SHEET XXX

DRB 58 DR 2014



ANDREA LEE FORMAN
AZ 20118
EXPIRES 12/31/17

COPYRIGHT © 2015 BY FORMAN ARCHITECTS. THIS DRAWING, AS AN INSTRUMENT OF PROFESSIONAL SERVICE, IS AND SHALL REMAIN THE PROPERTY OF FORMAN ARCHITECTS. NO PART OF THIS DRAWING MAY BE REPRODUCED, STORED IN A RETRIEVAL SYSTEM OR TRANSMITTED IN ANY FORM, WITHOUT THE PRIOR WRITTEN APPROVAL OF FORMAN ARCHITECTS.



FORMAN ARCHITECTS

4739 East Virginia Avenue
Phoenix, Arizona
85008.1515

602/339.9084
studio@formanarchitects.com

RETAIL BU. 3.0005 AT

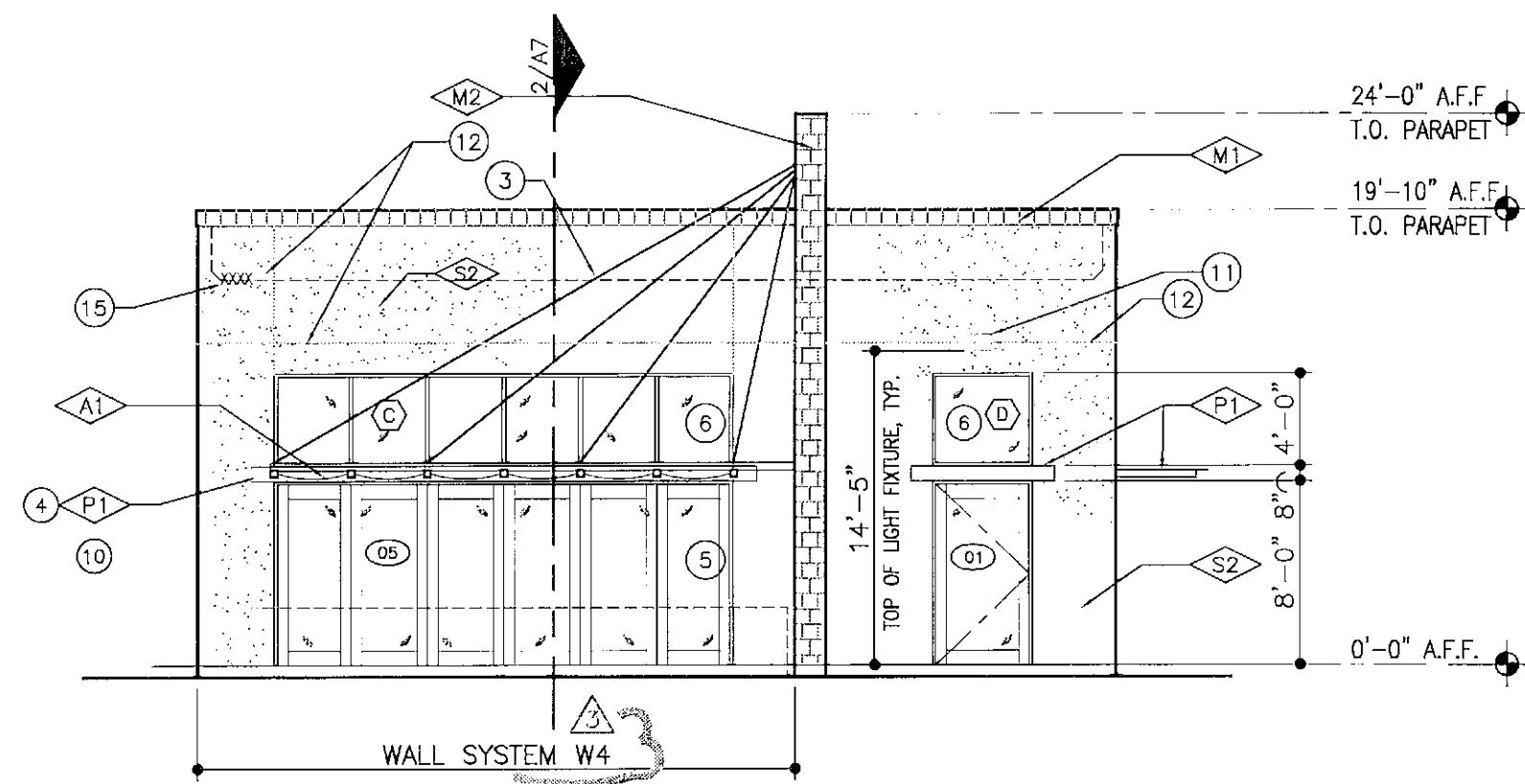
7025 RETAIL EAST BLDG.

7025 EAST FIRST AVENUE
SCOTTSDALE, ARIZONA
85251

DATE	12 MAY 2015
SCALE	AS INDICATED
JOB	1305
REVISION	OWNER 7/7/2015
	CITY 7/8/2015
	CITY 8/13/2015
	C.A. 10/5/2015

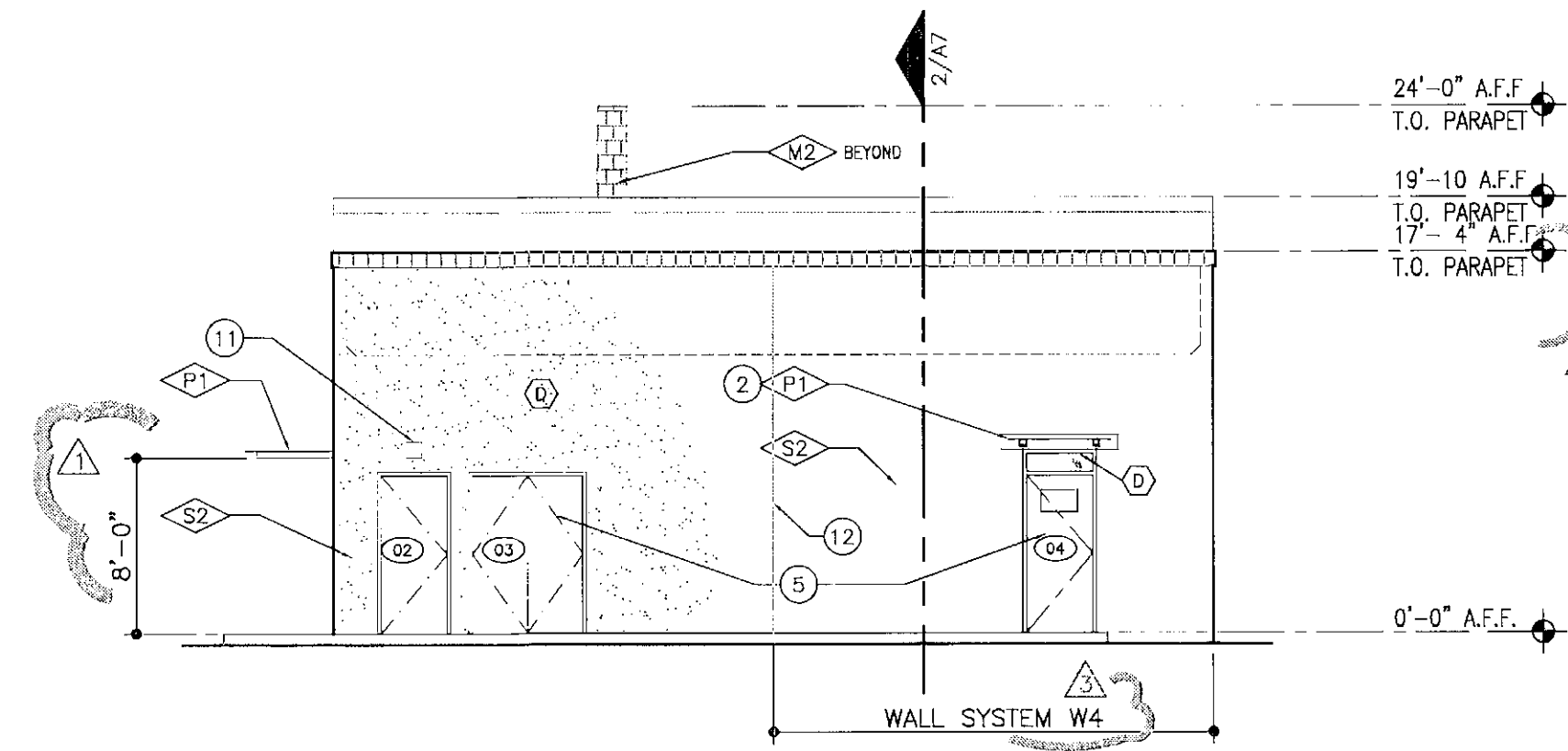
EAST EXTERIOR ELEVATIONS

DO NOT SCALE DRAWINGS **A6**



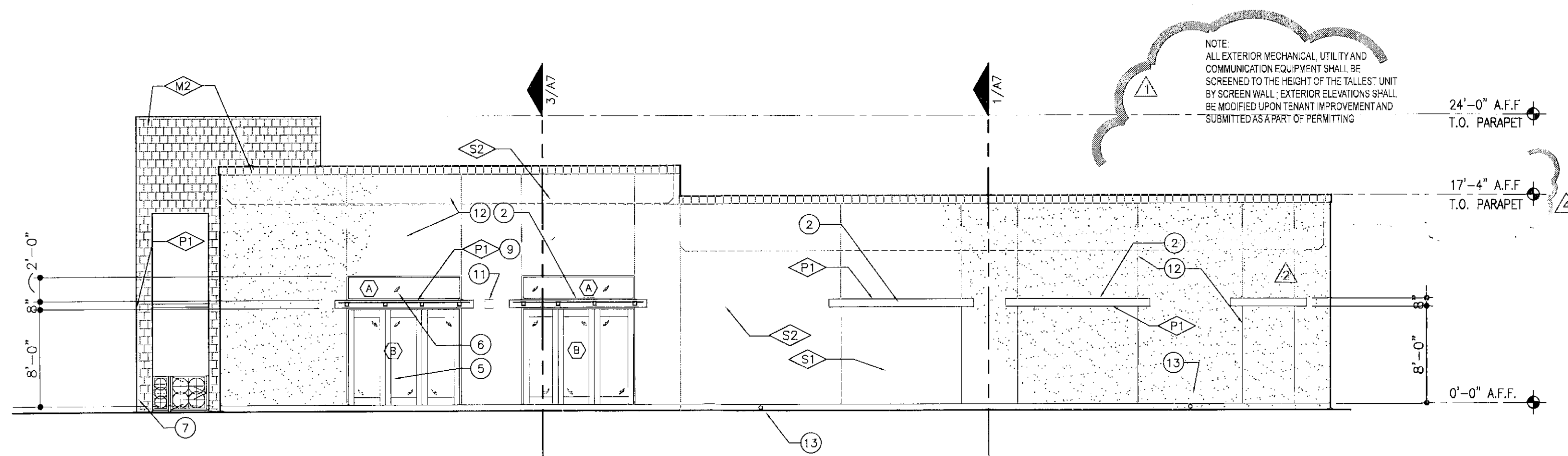
NORTH ELEVATION

1/8" = 1'-0"



SOUTH ELEVATION

1/8" = 1'-0"

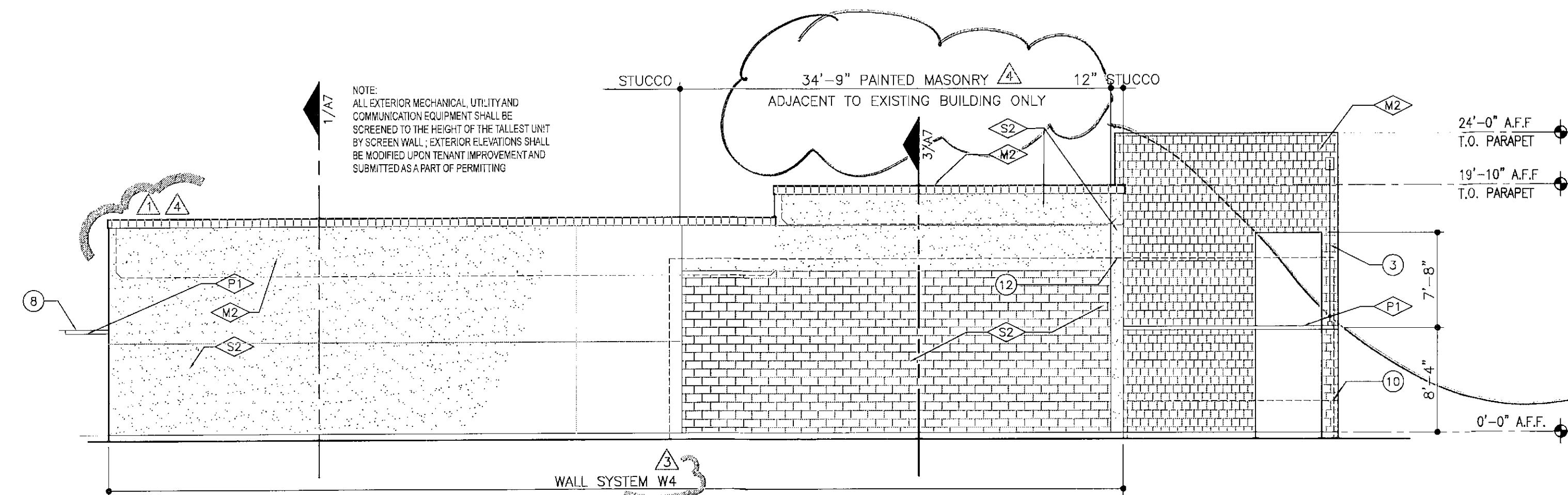


WEST ELEVATION

1/8" = 1'-0"

SITE/DUMPSTER WALL ELEV.

1/8" = 1'-0"



EAST ELEVATION

1/8" = 1'-0"

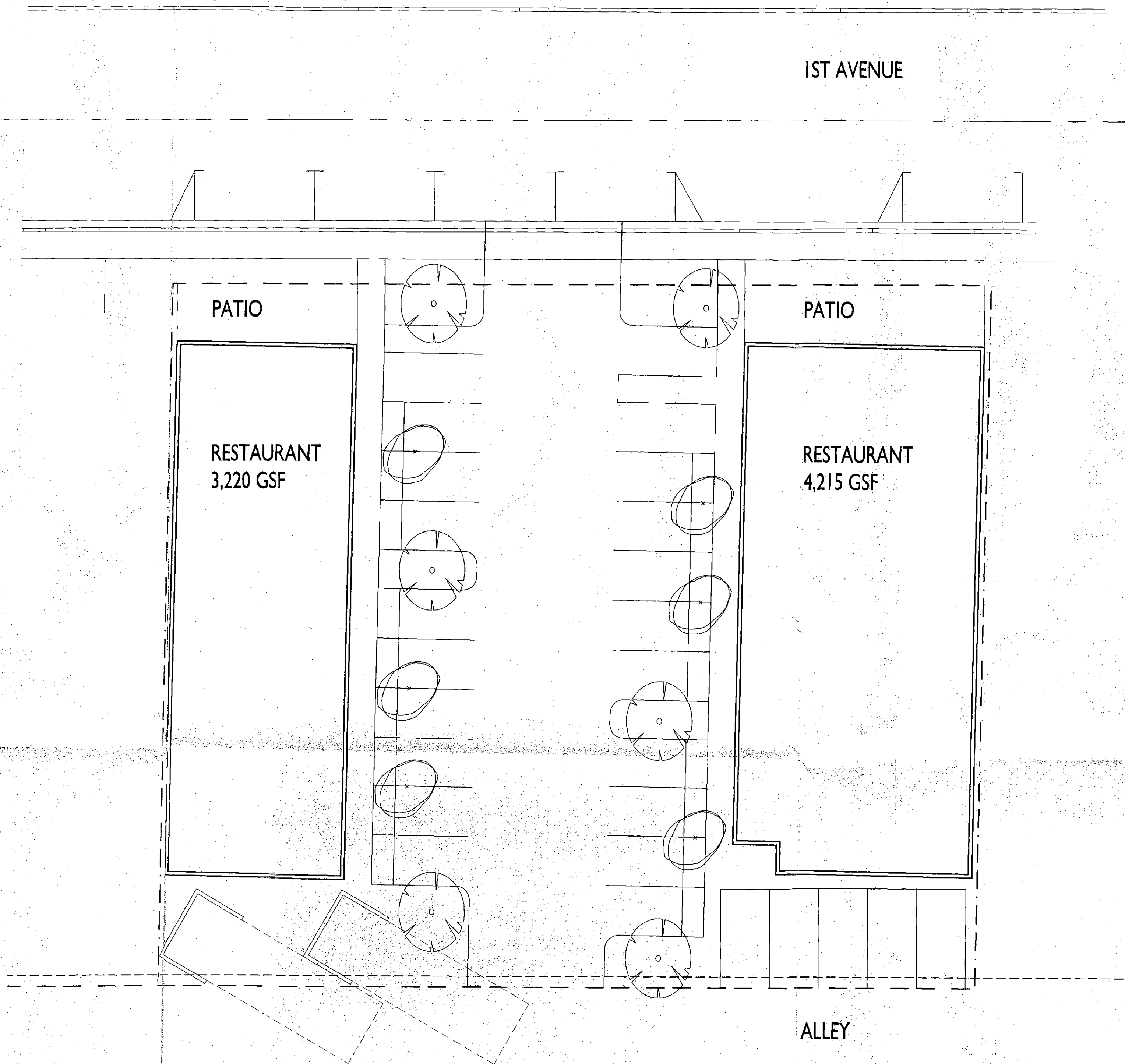
58-DR-14
STIPULATION SET
RETAIN FOR RECORDS
APPROVED [Signature]
DATE 11-2-15 [Signature]
INITIALS

*Revision only. Masonry area to be converted to stucco to match rest of building if/when adjacent building is demolished

PLOT DATE: 2/6/2014
 FILE NAME: FILEM:\Data\2013\ANDREA FOREMAN SCANS\00 A1 Arch Site .dwg

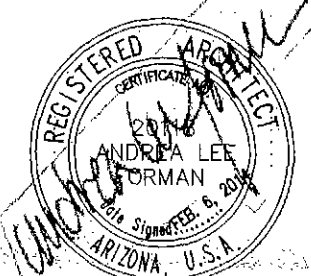


ARCHITECTURAL SITE PLAN



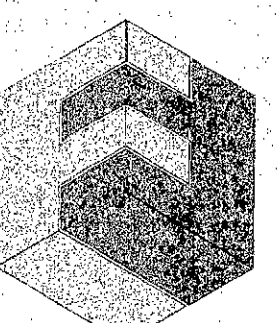
SITE PLAN DATA

ADDRESS: 7025 EAST FIRST AVENUE
 APN: 130-12-056
 GROSS LOT AREA: 23,450 SF
 NET LOT AREA: 19,200 SF
 ZONING: C2 DOWNTOWN OVERLAY, TYPE 2 WITH TYPE 1 AREAS ABUTTING TO THE SOUTH AND EAST
 USE: RESTAURANTS
 GFAR: 23,450 x 1.3 = 30,485 ALLOWABLE BUILDING AREA
 BUILDING AREA:
 EAST 4,215 GSF
 WEST 3,220 GSF
 TOTAL 7,435 GSF
 SETBACKS:
 SIDES AND REAR: 0'
 FRONT: 20' OR LESS DEPENDING ON PREVAILING STREET SETBACKS ALONG SOUTH SIDE OF FIRST AVENUE. SETBACK STARTS AT BACK OF CURB.
 HEIGHT: 36' EXCLUDING ROOFTOP APPURTENANCES - ONE-STORY ANTICIPATED
 PARKING ANALYSIS:
 REQUIRED:
 EAST BUILDING: 4,029 NSF/300 = 13 SPACES
 477 SF PATIO = 0 SPACES
 WEST BUILDING: 3,047 NSF/300 = 10 SPACES
 354 F PATIO = 0 SPACES
 TOTAL REQUIRED: 23 SPACES
 PROVIDED: 26 SPACES



ANDREA LEE
 FORMAN
 AZ 20118
 EXPIRES 12/31/14

COPYRIGHT © 2014 BY FORMAN ARCHITECTS. THIS DRAWING IS AN INSTRUMENT OF PROFESSIONAL SERVICE, IS AND SHALL REMAIN THE PROPERTY OF FORMAN ARCHITECTS. NO PART OF THIS DRAWING MAY BE REPRODUCED, STORED IN A RETRIEVAL SYSTEM OR TRANSMITTED IN ANY FORM, WITHOUT THE PRIOR WRITTEN APPROVAL OF FORMAN ARCHITECTS.



FORMAN ARCHITECTS

4739 East Virginia Avenue
 Phoenix, Arizona
 85008.1515

602/339.9084
 studio@formanarchitects.com

RETAIL BUILDINGS AT

7025 RETAIL

7025 EAST FIRST AVENUE
 SCOTTSDALE, ARIZONA
 85251

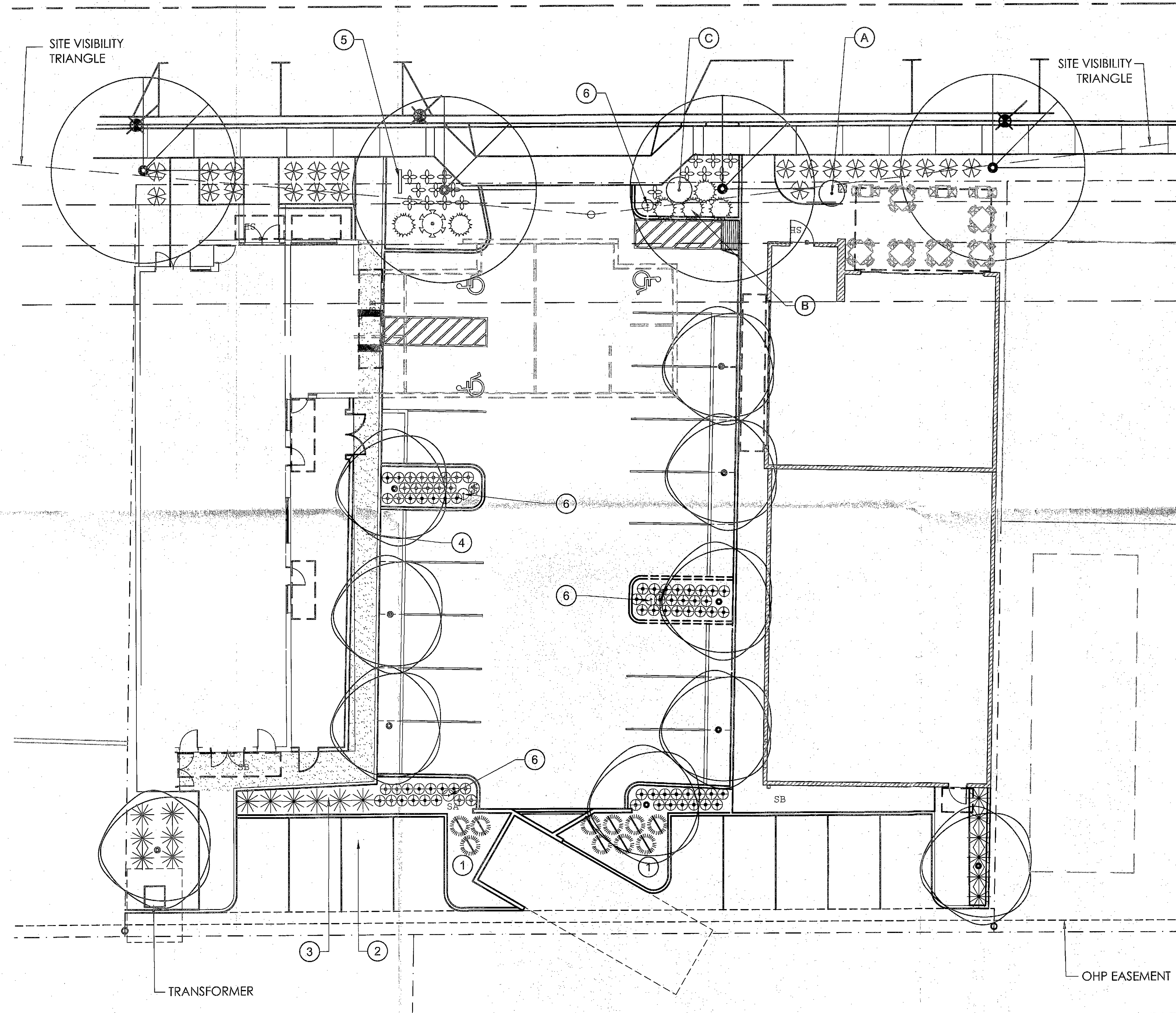
DATE: 04 FEB 2014
 SCALE: AS INDICATED
 JOB: 1305
 REVISION:

68-02-2014
 12/17/2014

CALL TWO WORKING DAYS BEFORE YOU DIG
 (602) 263-1100
 1-800 STAKE IT
 (OUTSIDE MARICOPA COUNTY)

DO NOT SCALE DRAWINGS

1ST AVENUE



CONCEPTUAL NOTES

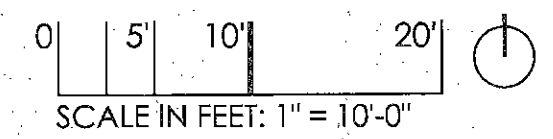
1. All planting areas to receive 2" depth decomposed granite unless otherwise noted.
2. All planting areas will be irrigated by an automatic irrigation system, separately metered.
3. All plants, both in the ROW and on site are on the ADWR low-water-using plant list, Phoenix AMA.
4. Salvage plant locations are approximate.

KEYNOTES

- 1 SALVAGE BOULDERS, APPROXIMATELY 5' (2'x3'x2'). REINSTALL AT ARCHITECT'S DIRECTION AT TRASH AREA PLANTERS.
- 2 SALVAGE CEREUS, REPLANT AT 'B'
- 3 SALVAGE YUCCA, REPLANT AT 'C'
- 4 SALVAGE BARREL, REPLANT AT 'A'
- 5 BIKE RACK, SEE ARCHITECTURE PLAN
- 6 LIGHT, SEE ELECTRICAL PLAN

PLANT LEGEND

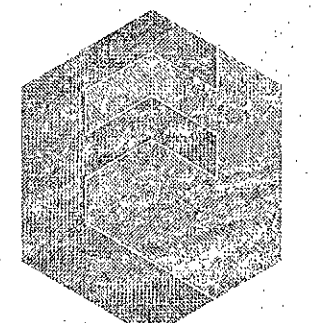
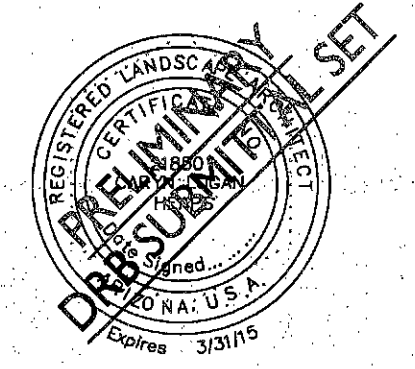
SYM.	BOTANICAL NAME COMMON NAME	SIZE	QTY.	NOTES/DETAIL
	ULMUS PARVIFOLIA 'BREA' CHINESE ELM	10' x 6' x 1.75" CAL.	4	
	ACACIA ANEURA MULGA	7' x 4' x 1.5" CAL.	10	
	YUCCA REGURVIFOLIA CURVE LEAF YUCCA	24" BOX	1	
	JUSTICIA SPICIGERA FIRECRACKER PLANT	5 GAL.	6	
	HESPERALOE PARVIFLORA 'YELLOW' YELLOW HESPERALOE	5 GAL.	18	
	ASCLEPIAS SUBULATA DESERT MILKWEED	5 GAL.	10	
	LANTANA MONTEVIDENSIS LANTANA	5 GAL.	22	
	ALOE 'BLUE ELF' BLUE ELF ALOE	5 GAL.	17	
	RUELLIA BRITTONIANA 'KATIE' KATIE RUELLIA	5 GAL.	74	
	SALVAGED PLANT			



STIPULATION SET
RETAIN FOR RECORDS
APPROVED
5-21-15
DATE INITIALS

LANDSCAPE ARCHITECT:
logan halperin
LANDSCAPE ARCHITECTURE
319 E PALM LANE, PHOENIX AZ
CARYN LOGAN HEAPS
480.560.2787
CARYN@LOGANHALPERIN.COM

DRB 130-PA-2014



FORMAN ARCHITECTS
4739 East Virginia Avenue
Phoenix, Arizona
85008.1515
602/339.9084
studio@formanarchitects.com

RETAIL BUILDINGS AT
7025 RETAIL

7025 EAST FIRST AVENUE
SCOTTSDALE, ARIZONA
85251

DATE 9 MAR 2015
SCALE AS INDICATED
JOB REVISION 130B

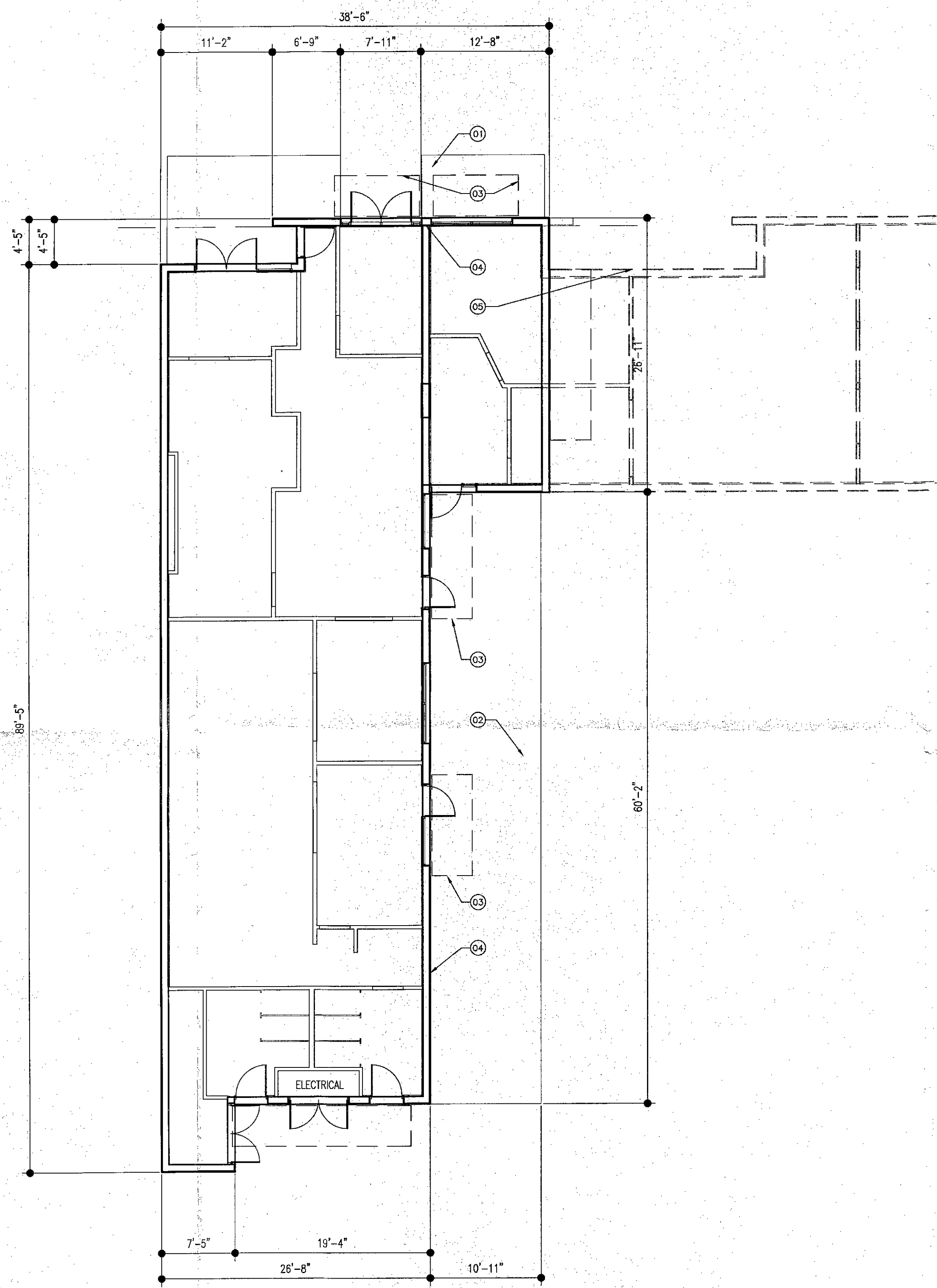
88-DR-2014
3/11/2015

CONCEPTUAL
LANDSCAPE PLAN

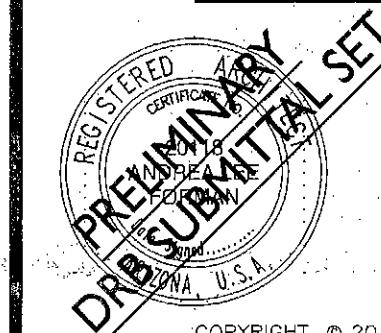
FLOOR PLAN NOTES

1. PARTIALLY ENCLOSED PATIO; REFERENCE SITE PLAN FOR EXTENTS
2. NEW ENCLOSED PATIO; REFERENCE SITE PLAN FOR EXTENTS
3. NEW OPENING SHADE CANOPY ABOVE EXISTING/NEW OPENING
4. ROOFTOP EQUIPMENT SCREENED BY EXISTING PARAPET; EXTEND TO MEET HEIGHT REQUIREMENTS
5. PORTION OF EXISTING BUILDING TO BE DEMOLISHED

NOTE: ROOF DRAINAGE EXISTING AT SCUPPER MAINTAINED IN THREE LOCATIONS

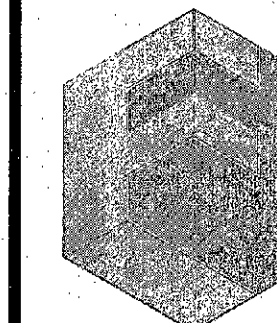


DRB 130-PA-2014



ANDREA LEE
FORMAN
AZ 20118
EXPIRES 12/31/17

COPYRIGHT © 2014 BY FORMAN ARCHITECTS. THIS DRAWING, AS AN INSTRUMENT OF PROFESSIONAL SERVICE, IS AND SHALL REMAIN THE PROPERTY OF FORMAN ARCHITECTS. NO PART OF THIS DRAWING MAY BE REPRODUCED, STORED IN A RETRIEVAL SYSTEM OR TRANSMITTED IN ANY FORM, WITHOUT THE PRIOR WRITTEN APPROVAL OF FORMAN ARCHITECTS.



**FORMAN
ARCHITECTS**

4739 East Virginia Avenue
Phoenix, Arizona
85008.1515

602/339.9084
studio@formanarchitects.com

RETAIL BUILDINGS AT

**7025
RETAIL**

7025 EAST FIRST AVENUE
SCOTTSDALE, ARIZONA
85251

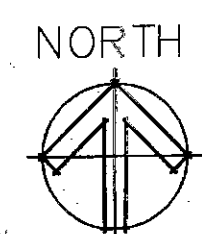
DATE 09 MAR 2015
SCALE AS INDICATED
JOB 1305
REVISION

STIPULATION SET
RETAIN FOR RECORDS
APPROVED
5-21-15
DATE INITIALS

WEST FLOOR PLAN

DO NOT SCALE
DRAWINGS

A7



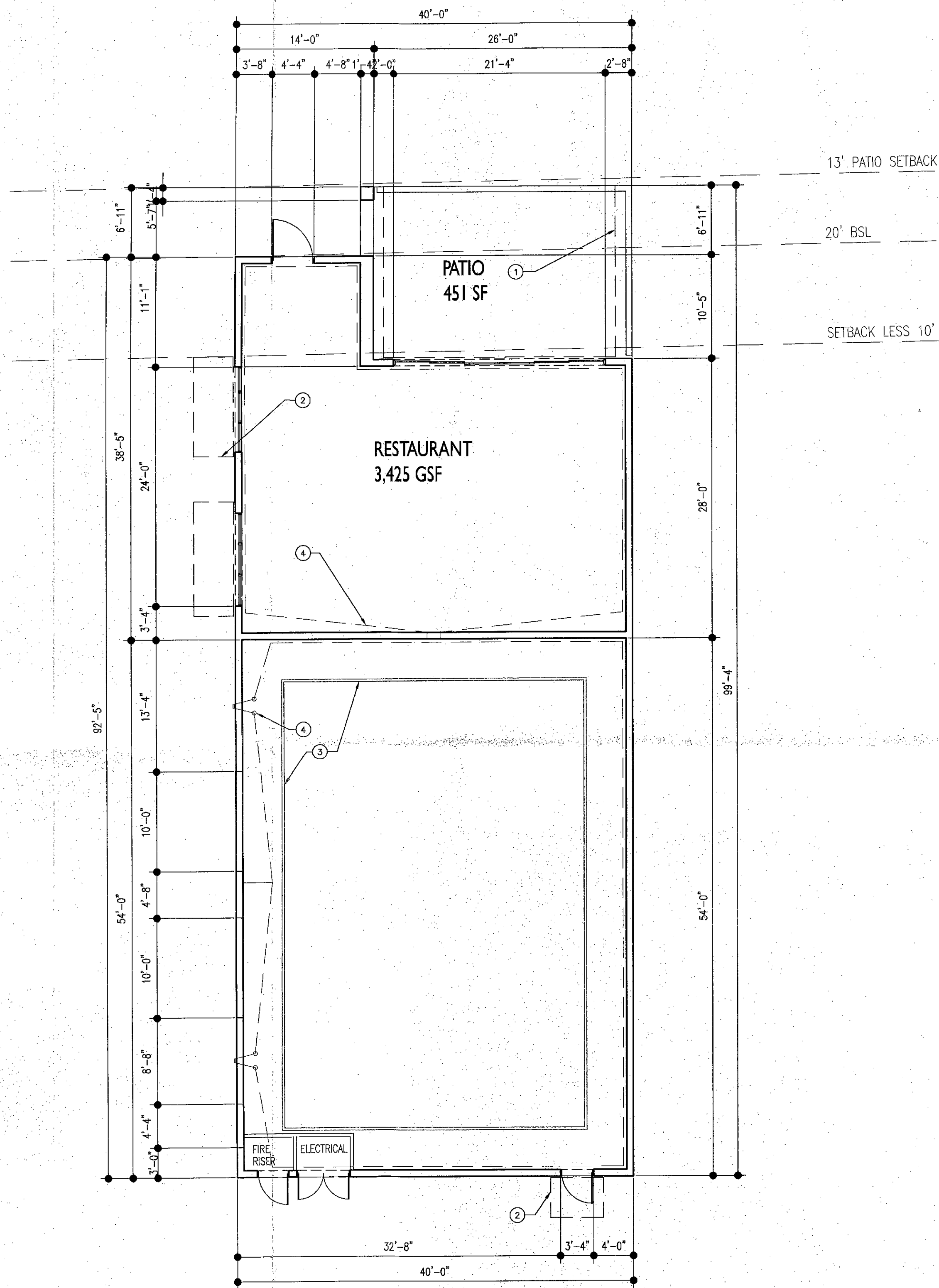
WEST FLOOR PLAN

1/8" = 1'-0"

ALT
22 JAN 2014
1305 A7 WEST FLOOR PLAN

FLOOR PLAN NOTES

1. ENCLOSED PATIO WITH FABRIC AWNING ABOVE.
2. OPENING SHADE CANOPY ABOVE.
3. ROOFTOP EQUIPMENT SCREEN PER CITY REQUIREMENTS CONSTRUCTED OF METAL SIDING.
4. ROOF CRICKETS TO CONCEALED ROOF DRAINS AT WALL DAYLIGHTING 6 INCHES ABOVE SIDEWALK ELEVATION.

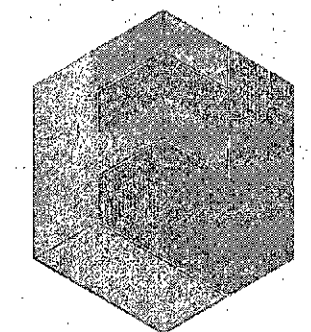


DRB 130-PA-2014

**PRELIMINARY
DRB SUBMITTAL SET**

ANDREA LEE
FORMAN
AZ 20118
EXPIRES 12/31/17

COPYRIGHT © 2014 BY FORMAN ARCHITECTS. THIS DRAWING IS AN INSTRUMENT OF PROFESSIONAL SERVICE, IS AND SHALL REMAIN THE PROPERTY OF FORMAN ARCHITECTS. NO PART OF THIS DRAWING MAY BE REPRODUCED, STORED IN A RETRIEVAL SYSTEM OR TRANSMITTED IN ANY FORM, WITHOUT THE PRIOR WRITTEN APPROVAL OF FORMAN ARCHITECTS.



**FORMAN
ARCHITECTS**

4739 East Virginia Avenue
Phoenix, Arizona
85008.1515

602/339.9084
studio@formanarchitects.com

RETAIL BUILDINGS AT

**7025
RETAIL**

7025 EAST FIRST AVENUE
SCOTTSDALE, ARIZONA
85251

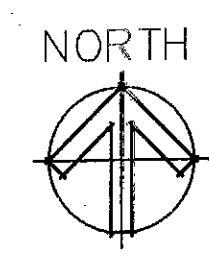
DATE 09 MAR 2015
SCALE AS INDICATED
JOB 1305
REVISION

STIPULATION SET
RETAIN FOR RECORDS
APPROVED
5-21-15
DATE INITIALS

EAST FLOOR PLAN

DO NOT SCALE
DRAWINGS

A 6

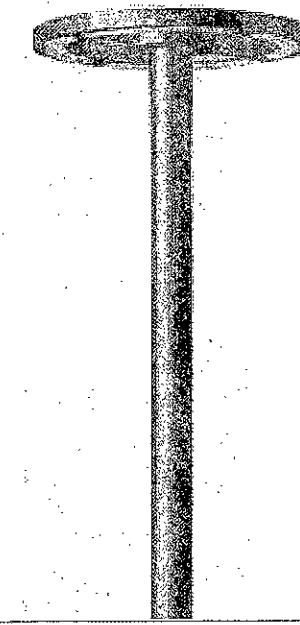


EAST FLOOR PLAN

CFT540 LED (700mA)
659-6724



1/2



Description
IP68, Post, top LED luminaire. Integrated heat sinks. Easy removal and replacement of LED board. CAD-optimized OLO® PMMA lens for multi-layer illumination and superior glare control.

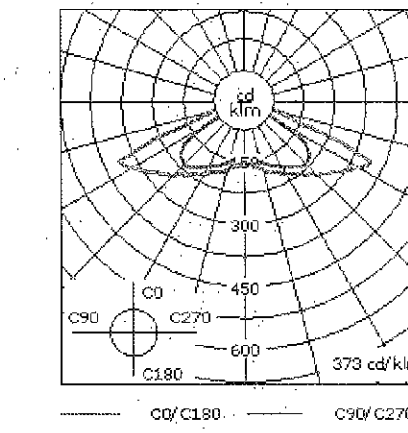
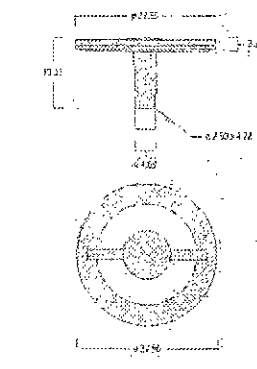
Beam Type	rectangular (R)
Lamp Type	36 LED 72W (4000K)
Gear Type	electronic gear
Nominal Luminous Flux (lm)	
LED Lumens	230.4 lm
LEDs	36
Total Lumens	8284 lm
Tj	85 °C
Rated Luminous Flux (lm)	
LED Lumens	204.8 lm
Total Lumens	7373.4 lm
Ta	25 °C
Rated Input Power	88 W

WE-EF LIGHTING USA LLC
416-D Keystone Drive | Warrington, PA 18988 | U.S.A. | Tel: +1 724 742 8020 | Fax: +1 724 742 0225 | info.usa@we-ef.com | www.we-ef.com

CFT540 LED (700mA)
659-6724



2/2



Additional Specifications

MATERIALS:
Marine grade aluminum alloy. SCE superior protection, including PCS hardware. PMMA RPO® Reflection Free Contour technology. Silicone rubber gasket.

ELECTRICAL:
Integral (ECG) electronic LED driver, in 120 or 277 volt. Specify voltage. Ambient temperature: Ta < 25° C.
For complete range of dimming options, contact WE-EF factory.

Luminaire is factory wired and supplied with 20 feet of black, 3 conductor, flexible SEOW cord for power connection at pole base hand hole. Specify other lengths if required.

MOUNTING:
Suitable for pole mounting. Refer to mounting accessories for complete range of accessories. Weight: 29.3 lbs. E.P.A.: 0.8 sq. ft.

FINISH:
Powder coat finish in Black RAL9004, White RAL9016, and Grey Metallic RAL9007. Specify finish. Consult WE-EF color chart for other color options.

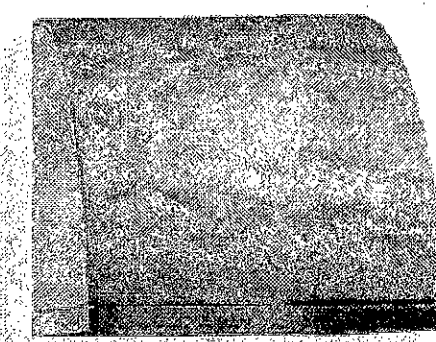
LISTINGS:
UL, c UL, listed. Suitable for Wet locations. International Protection Classification: IP68.

WE-EF LIGHTING USA LLC
416-D Keystone Drive | Warrington, PA 18988 | U.S.A. | Tel: +1 724 742 8020 | Fax: +1 724 742 0225 | info.usa@we-ef.com | www.we-ef.com

OLV334 LED
622-6723



1/3



Description
IP65, Surface mounted wallwasher. Suitable for installation over 4" recessed junction box in upright or downlight position.

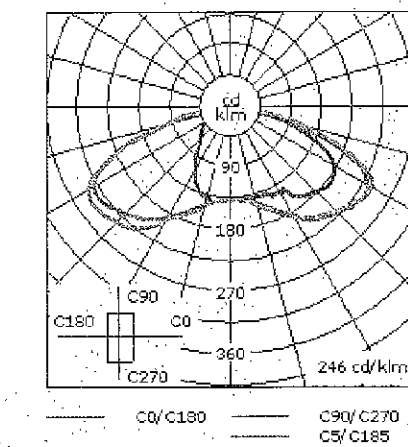
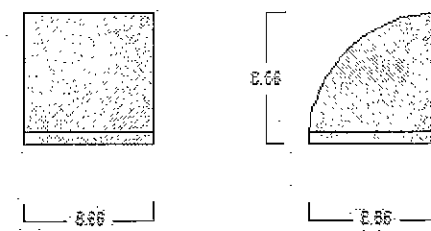
Beam Type	(R65) Type IV Medium
Lamp Type	12 LED 24W (4000K)
Gear Type	electronic gear
Nominal Luminous Flux (lm)	
LED Lumens	230.4 lm
LEDs	12
Total Lumens	2765 lm
Tj	85 °C
Rated Luminous Flux (lm)	
LED Lumens	163.4 lm
Total Lumens	1960.4 lm
Ta	25 °C
Rated Input Power	29 W

WE-EF LIGHTING USA LLC
416-D Keystone Drive | Warrington, PA 18988 | U.S.A. | Tel: +1 724 742 8020 | Fax: +1 724 742 0225 | info.usa@we-ef.com | www.we-ef.com

OLV334 LED
622-6723



2/3



Additional Specifications

MATERIALS:
Luminaire body and lens frame constructed in die cast aluminum. Tempered glass lens. PCS hardware. Silicone rubber gasket. Factory-installed LED circuit board. LED boards can be easily removed for upgrading PMMA LED lens array.

ELECTRICAL:
Integral (ECG) electronic LED driver in 120 or 277 volt. Specify voltage.
Ambient Temperature: Ta < 25 ° C

MOUNTING:
Suitable for installation over a standard 4" recessed junction box. Luminaire can be mounted as an uplight, or downlight. Weight: 14.6 lbs.

FINISH:
Powder coat finish in Black RAL9004, White RAL9016, and Grey Metallic RAL9007. Specify finish. Consult WE-EF color chart for other color options.

LISTINGS:
UL, c UL, listed. Suitable for Wet locations.
International Protection Classification: IP65.

MOUNTING ACCESSORIES:
622-9321, Surface collar constructed of fabricated aluminum to match luminaire housing. Supplied with (4) 3/4" knockout tabs for conduit entry. Suited for installations that require a surface mounted junction box & conduit. Surface j-box and conduit to be supplied by others. See details: www.we-ef.com

WE-EF LIGHTING USA LLC
416-D Keystone Drive | Warrington, PA 18988 | U.S.A. | Tel: +1 724 742 8020 | Fax: +1 724 742 0225 | info.usa@we-ef.com | www.we-ef.com

OLV334 LED
622-6723



3/3

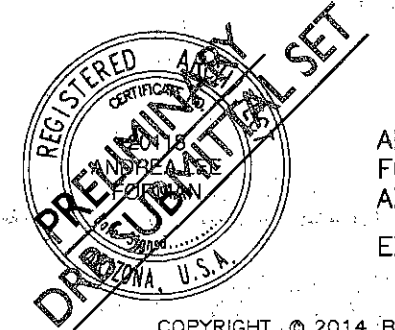
Mounting accessories

Surface Collar Missing Image

622-9321 Surface Collar

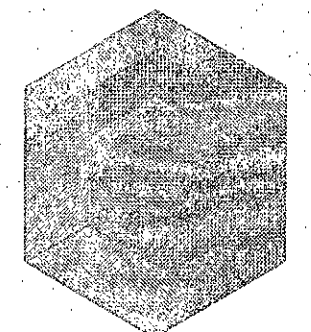
WE-EF LIGHTING USA LLC
416-D Keystone Drive | Warrington, PA 18988 | U.S.A. | Tel: +1 724 742 8020 | Fax: +1 724 742 0225 | info.usa@we-ef.com | www.we-ef.com

DRB 130-PA-2014



ANDREA LEE
FORMAN
AZ 20118
EXPIRES 12/31/17

COPYRIGHT © 2014 BY FORMAN ARCHITECTS. THIS DRAWING, AS AN INSTRUMENT OF PROFESSIONAL SERVICE, IS AND SHALL REMAIN THE PROPERTY OF FORMAN ARCHITECTS. NO PART OF THIS DRAWING MAY BE REPRODUCED, STORED IN A RETRIEVAL SYSTEM OR TRANSMITTED IN ANY FORM, WITHOUT THE PRIOR WRITTEN APPROVAL OF FORMAN ARCHITECTS.



FORMAN ARCHITECTS

4739 East Virginia Avenue
Phoenix, Arizona
85008.1515

602/339.9084
studio@formanarchitects.com

RETAIL BUILDINGS AT

7025 RETAIL

7025 EAST FIRST AVENUE
SCOTTSDALE, ARIZONA
85251

DATE 09 MAR 2015
SCALE AS INDICATED
JOB
REVISION 1305

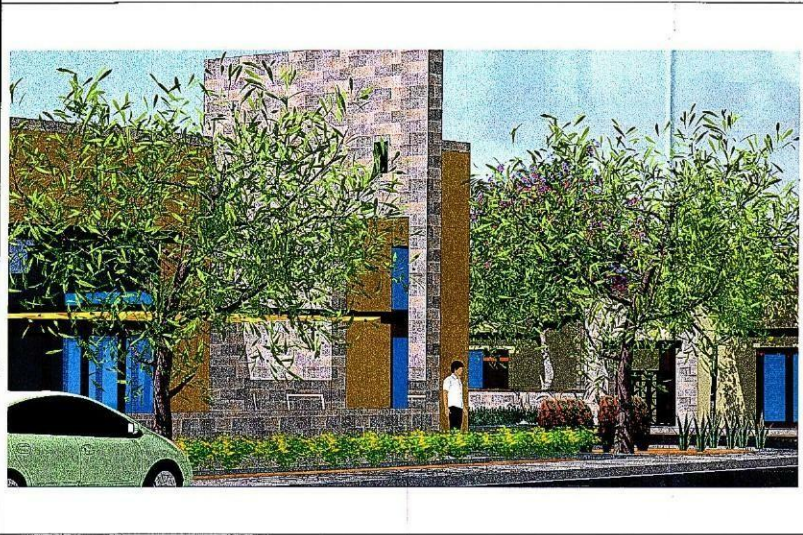
LIGHTING CUT SHEETS

EB-DR-2014
3/11/2015

DO NOT SCALE DRAWINGS

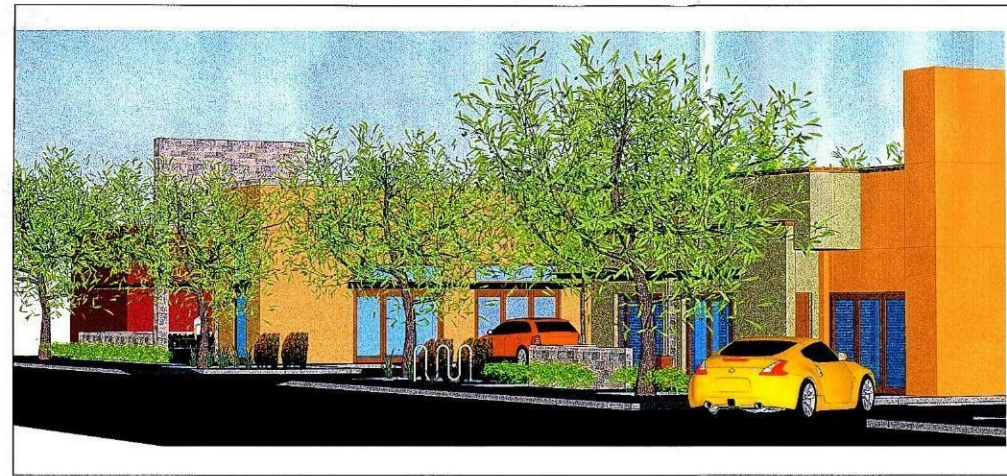
A9

STIPULATION SET
RETAIN FOR RECORDS
APPROVED
5-21-15
DATE INITIALS



STREET - LOOKING WEST

1/8" = 1'-0"



STREET - LOOKING EAST

1/8" = 1'-0"



WEST BUILDING

1/8" = 1'-0"



STREET - LOOKING WEST

1/8" = 1'-0"



ALLEY - LOOKING WEST

1/8" = 1'-0"



EAST BUILDING

1/8" = 1'-0"



STREET VIEW

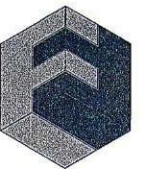
1/8" = 1'-0"

DRB 130-PA-2014



ANDREA LEE
FORMAN
AZ 20118
EXPIRES 12/31/17

COPYRIGHT © 2014 BY FORMAN ARCHITECTS.
THIS DRAWING, AS AN INSTRUMENT OF PROFESSIONAL
SERVICE IS AND SHALL REMAIN THE PROPERTY OF
FORMAN ARCHITECTS. NO PART OF THIS DRAWING MAY
BE REPRODUCED, STORED IN A RETRIEVAL SYSTEM
OR TRANSMITTED IN ANY FORM, WITHOUT THE
PRIOR WRITTEN APPROVAL OF FORMAN ARCHITECTS.



**FORMAN
ARCHITECTS**

4739 East Virginia Avenue
Phoenix, Arizona
85008.1515

602/339.9084
studio@formanarchitects.com

HEMAL BUILDINGS AT

**7025
RETAIL**

STIPULATION SET
RETAIN FOR RECORDS
APPROVED

5-21-15
DATE INITIALS

7025 EAST FIRST AVENUE
SCOTTSDALE, ARIZONA
85251

DATE 09 MAR 2015
SCALE AS INDICATED
JOB 1305
REVISION

EAST EXTERIOR ELEVATIONS

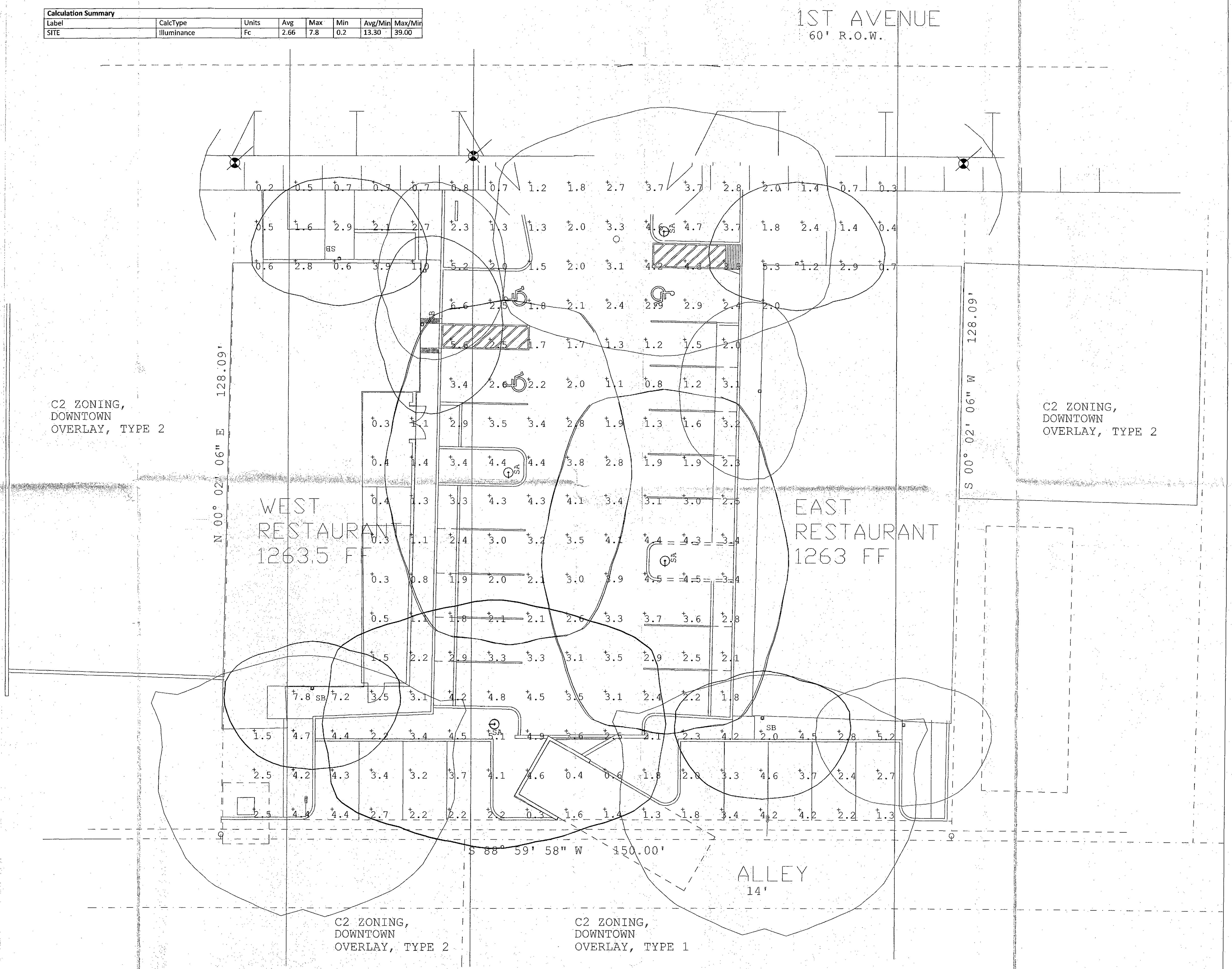
68-DR-2014
3/11/2015

DO NOT SCALE
DRAWINGS

A8

Luminaire Schedule										
Label	Symbol	MANUFACTURER	Description	MTG HEIGHT	MOUNTING	LLF	Lum. Lumens	Lum. Watts	Qty	
SA	⊕	WE-EF USA	659-6724 - CFT540-LED	15' MTG HT	SINGLE	0.850	7367	86	4	
SB	⊕	WE-EF USA	622-6723 - OLV334-LED	8' MTG HT.	SINGLE	0.850	1974	29	8	
EX - GE7		GE Lighting Systems - Hendersonville	100WHPS COBRA HEAD - EXISTING	22.5' MTG HT.	SINGLE	0.800	7055	1	2	

Calculation Summary							
Label	CalcType	Units	Avg	Max	Min	Avg/Min	Max/Min
SITE	illuminance	Fc	2.66	7.8	0.2	13.30	39.00

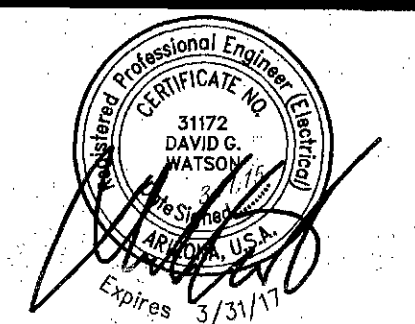


SITE PHOTOMETRICS

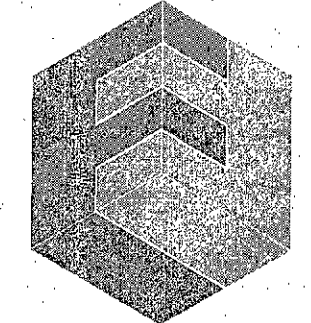
SCALE: 1" = 10'-0"
NORTH

01/20/15
11 MAR 05
98xxAx

DRB 130-PA-2014



COPYRIGHT © 2014 BY FORMAN ARCHITECTS. THIS DRAWING IS AN INSTRUMENT OF PROFESSIONAL SERVICE AND SHALL REMAIN THE PROPERTY OF FORMAN ARCHITECTS. NO PART OF THIS DRAWING MAY BE REPRODUCED, STORED IN A RETRIEVAL SYSTEM OR TRANSMITTED IN ANY FORM, WITHOUT THE PRIOR WRITTEN APPROVAL OF FORMAN ARCHITECTS.



FORMAN ARCHITECTS

4739 East Virginia Avenue
Phoenix, Arizona
85008.1515

602/339.9084
studio@formanarchitects.com

RETAIL BUILDINGS AT

7025 RETAIL

STIPULATION SET
RETAIN FOR RECORDS
APPROVED

5-21-15
DATE INITIALS

7025 EAST FIRST AVENUE
SCOTTSDALE, ARIZONA
85251

DATE 09 MAR 2015
SCALE AS INDICATED
JOB 1305
REVISION

PHOTOMETRIC PLAN

88-DR-2014
3/11/2015

DO NOT SCALE DRAWINGS

A3



NORTH ELEVATION

1/8" = 1'-0"



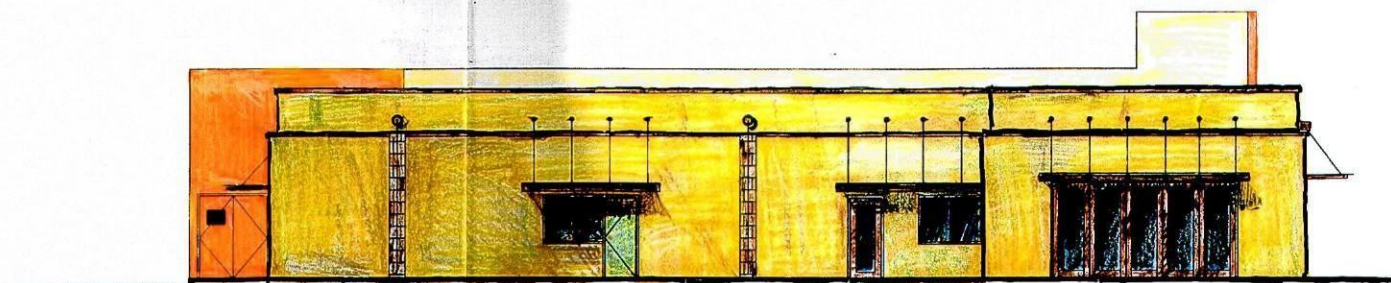
SOUTH ELEVATION

1/8" = 1'-0"



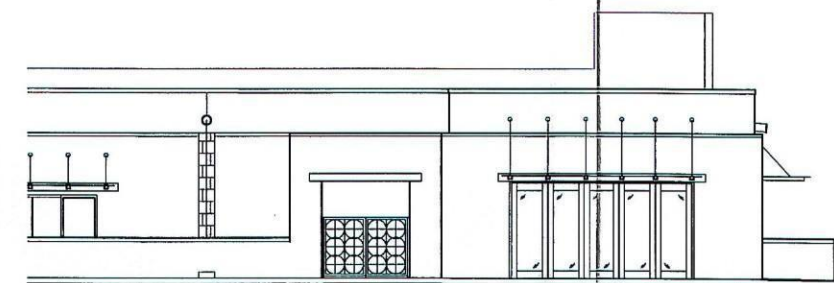
EAST ELEVATION

1/8" = 1'-0"



WEST ELEVATION

1/8" = 1'-0"



WEST ELEVATION (W/PATIO WALL)

1/8" = 1'-0"

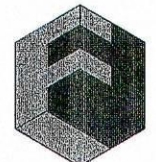
STIPULATION SET
RETAIN FOR RECORDS
APPROVED
DATE 5-21-15 INITIALS [Signature]

DRB 130-PA-2014



ANDREA LEE
FORMAN
AZ 20118
EXPIRES 12/31/17

COPYRIGHT © 2014 BY FORMAN ARCHITECTS. THIS DRAWING, AS AN INSTRUMENT OF PROFESSIONAL SERVICE, IS AND SHALL REMAIN THE PROPERTY OF FORMAN ARCHITECTS. NO PART OF THIS DRAWING MAY BE REPRODUCED, STORED IN A RETRIEVAL SYSTEM OR TRANSMITTED IN ANY FORM, WITHOUT THE PRIOR WRITTEN APPROVAL OF FORMAN ARCHITECTS.



FORMAN
ARCHITECTS

4739 East Virginia Avenue
Phoenix, Arizona
85008.1515

602/339.9084
studio@formanarchitects.com

RETAIL BUILDINGS AT

7025
RETAIL

7025 EAST FIRST AVENUE
SCOTTSDALE, ARIZONA
85251

DATE 17 FEB 2015
SCALE AS INDICATED
JOB 1305
REVISION

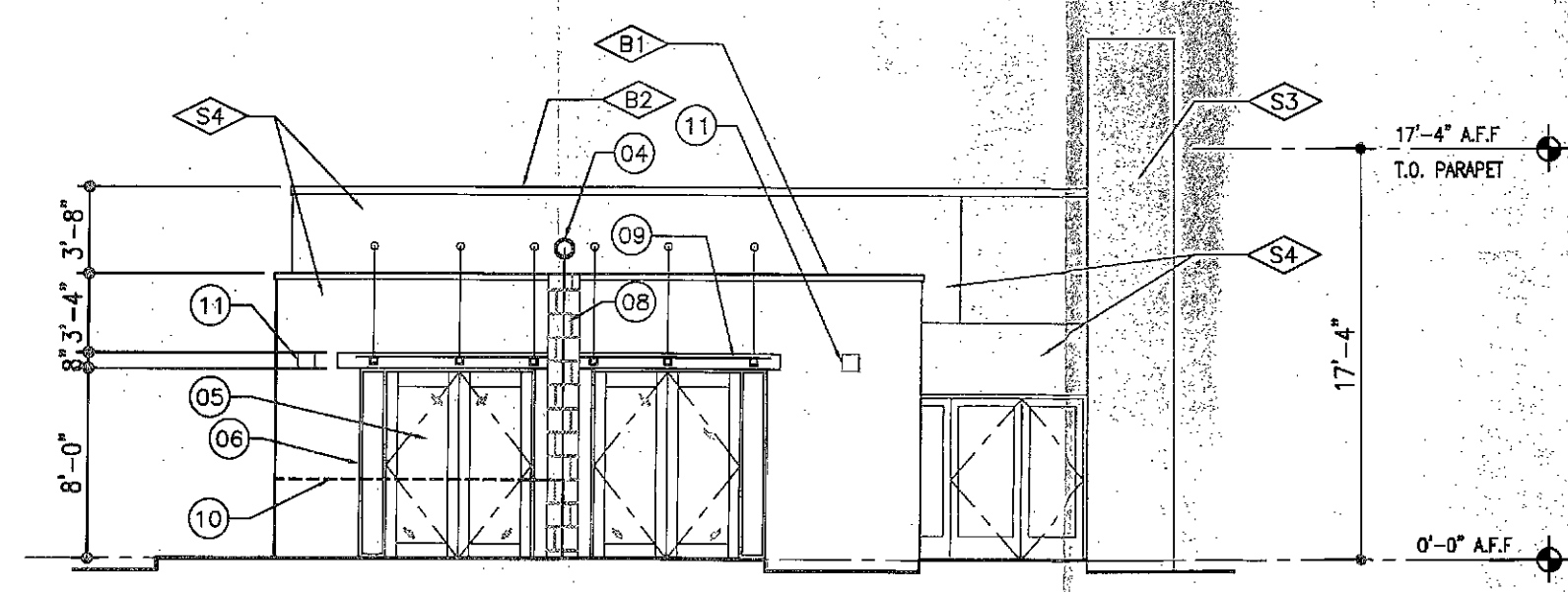
58-DR-2014
4/7/2015

WEST EXTERIOR ELEVATIONS

58-DR-2014
3/11/2015

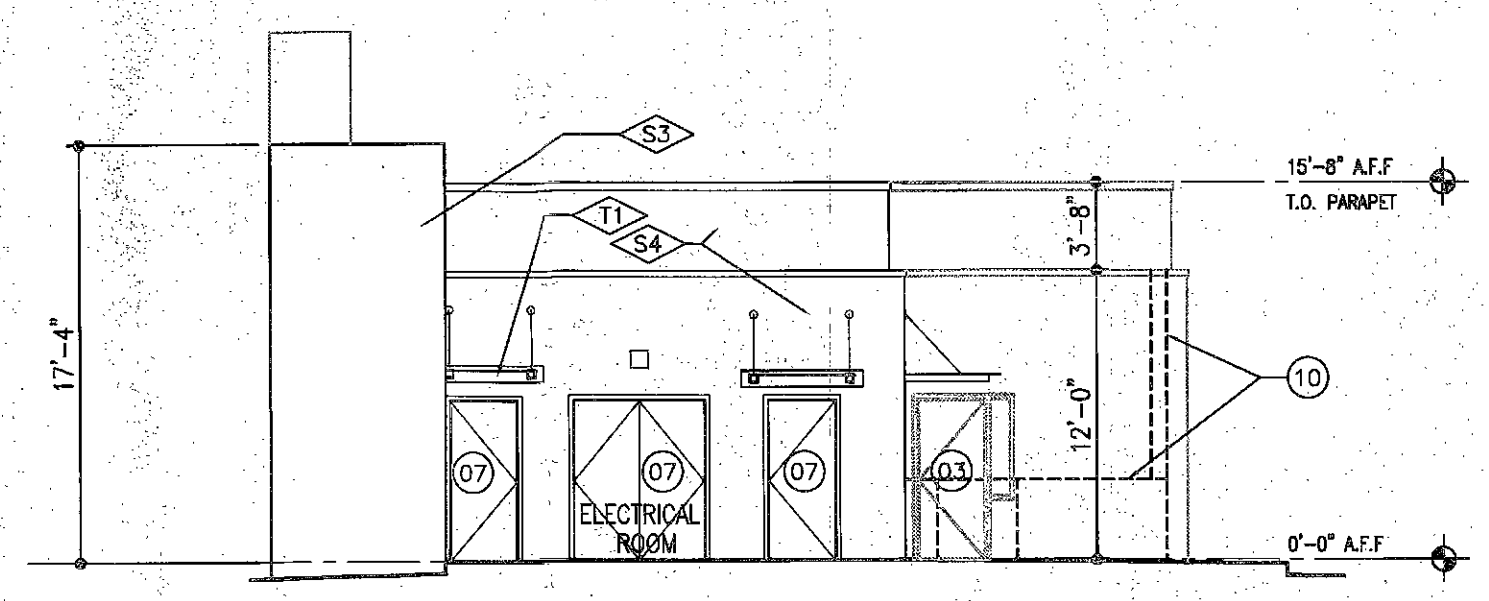
DO NOT SCALE
DRAWINGS

A5



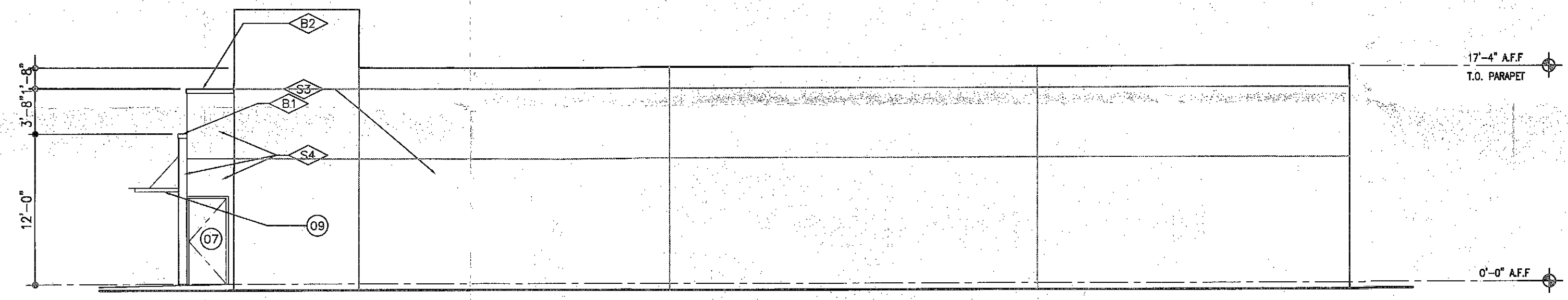
NORTH ELEVATION

1/8" = 1'-0"



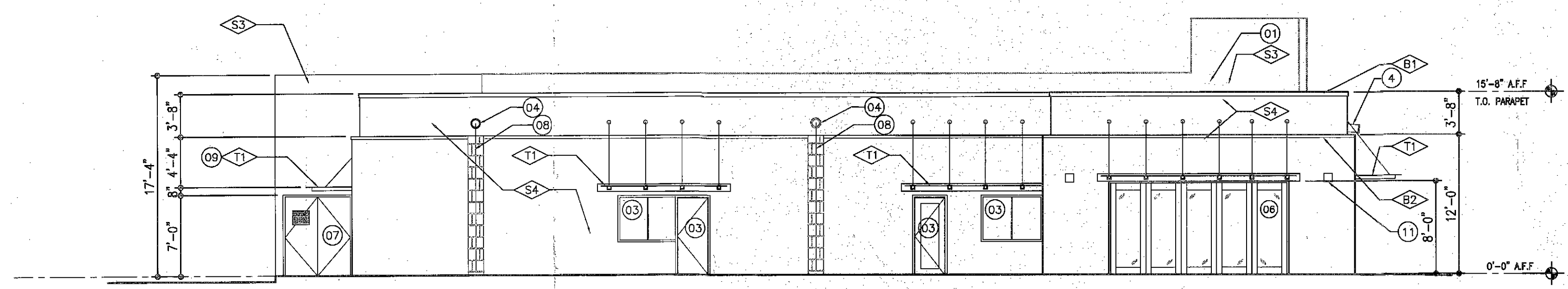
SOUTH ELEVATION

1/8" = 1'-0"



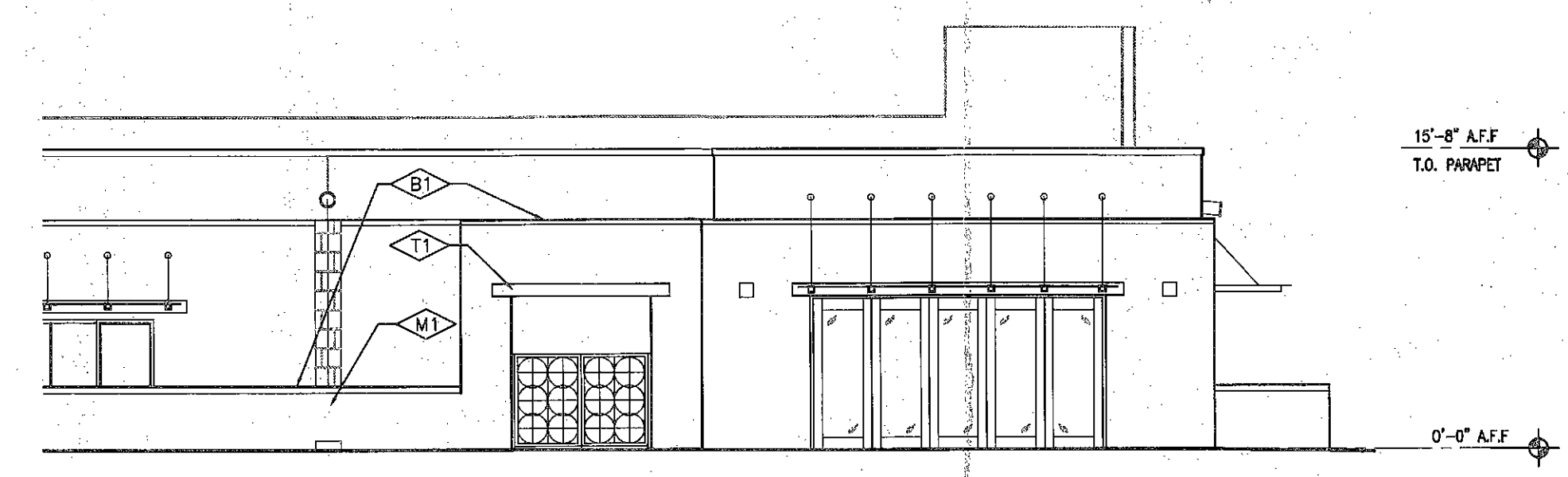
EAST ELEVATION

1/8" = 1'-0"



WEST ELEVATION

1/8" = 1'-0"



WEST ELEVATION (W/PATIO WALL)

1/8" = 1'-0"

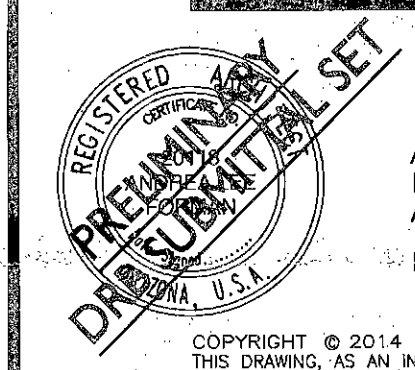
ELEVATION SHEET NOTES

1. PARAPET BEYOND
2. SINGLE LITE WINDOW/DOOR WITH CLEAR STAIN
3. EXISTING WOOD DOOR/WINDOW TO REMAIN; REFINISH TO MATCH NEW WINDOW/DOOR STAIN
4. EXISTING 12 INCH DIA. CANTERA STONE SCUPPER TO REMAIN
5. NEW SINGLE LITE WOOD DOOR(S); REFERENCE EAST BUILDING ELEVATIONS
6. NEW SINGLE LITE WINDOW(S); REFERENCE EAST BUILDING ELEVATIONS
7. EXISTING DOOR TO REMAIN; PAINT TO MATCH ADJACENT WALL FINISH
8. NEW RAIN CHAIN FROM EXISTING SCUPPER WITH SANDBLASTED CMU VENEER BLOCK TO MATCH ADJACENT SITE WALLS APPLIED TO WALL BEHIND
9. PAINTED METAL CANOPY - MATERIAL S5
10. DASHED LINE REPRESENTS PATIO WALL IN FRONT OF ELEVATION PLANE
11. WALL MOUNTED LIGHT FIXTURE; REF. LIGHTING CUT SHEETS
12. STUCCO EXPANSION JOINT
13. ROOF DRAIN
14. METAL SERVICE DOOR; PAINT TO MATCH ADJACENT FINISH

THE FOLLOWING COLORS AND MANUFACTURER'S ARE LISTED SOLELY TO ESTABLISH A LEVEL OF QUALITY. OTHER MANUFACTURER'S MAY SUBMIT PRODUCTS OF EQUAL VALUE OR QUALITY FOR PRIOR APPROVAL BY THE ARCHITECT AND OWNER.

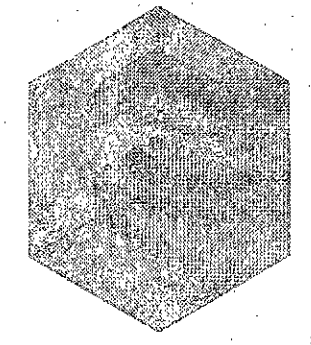
- B BROWN BRICK TO MATCH EXISTING; FOREST BLEND MANUFACTURED BY MUTUAL MATERIAL
- A1 8" x 8" x 16" INTEGRALLY COLORED CMU BLOCK OR 8" x 16" VENEER BLOCK; SANDBLAST FINISH TO EXPOSE AGGREGATES
- S1 STUCCO, ICI 667 MACADAMIA WHITE (L.R. 74)
- S2 STUCCO, ICI 652 HAZELWOOD (L.R. 65)
- S3 STUCCO, ICI 383 CORAL SPICE (L.R. 53)
- S4 STUCCO, ICI 921 JUNIPER BERRY (L.R.59)
- P1 STEEL, PAINTED ICI 453 MONTERREY CLIFFS (L.R. 14)
- R1 METAL ROOFING; BERRIDGE STANDARD COLOR ZINC GREY
- A1 FABRIC AWNING; SUNBRELLA MARINE GRADE, #4653 BUTTERCUP

DRB 58 DR 2014



ANDREA LEE
FORMAN
AZ 20118
EXPIRES 12/31/17

COPYRIGHT © 2014 BY FORMAN ARCHITECTS. THIS DRAWING IS AN INSTRUMENT OF PROFESSIONAL SERVICE, IS AND SHALL REMAIN THE PROPERTY OF FORMAN ARCHITECTS AND PART OF THIS DRAWING MAY BE REPRODUCED, STORED IN A RETRIEVAL SYSTEM OR TRANSMITTED IN ANY FORM, WITHOUT THE PRIOR WRITTEN APPROVAL OF FORMAN ARCHITECTS



FORMAN ARCHITECTS

4739 East Virginia Avenue
Phoenix, Arizona
85008.1515

602/339.9084
studio@formanarchitects.com

RETAIL BUILDINGS AT

7025 RETAIL

7025 EAST FIRST AVENUE
SCOTTSDALE, ARIZONA
85251

DATE 09 MAR 2015
SCALE AS INDICATED
JOB REVISION 1305

88-DR-2014
4/7/2015

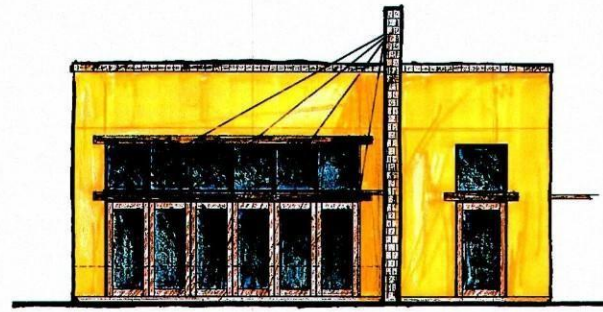
WEST EXTERIOR ELEVATIONS

STIPULATION SET
RETAIN FOR RECORDS
APPROVED

5-21-15
DATE INITIALS

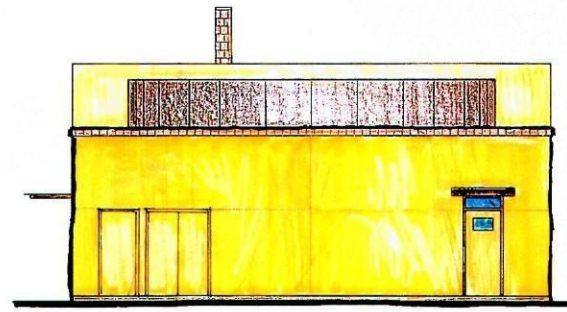
DO NOT SCALE DRAWINGS

A5



NORTH ELEVATION

1/8" = 1'-0"



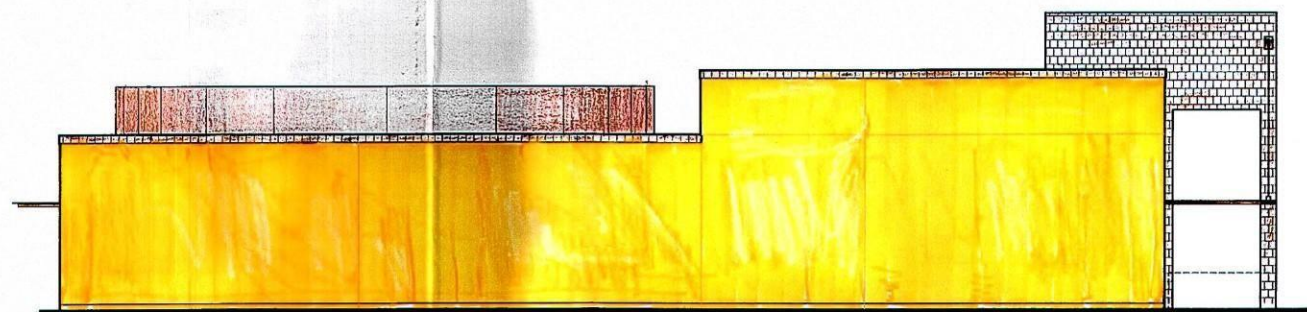
SOUTH ELEVATION

1/8" = 1'-0"



EAST ELEVATION

1/8" = 1'-0"



WEST ELEVATION

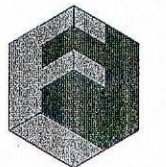
1/8" = 1'-0"

DRB 130-PA-2014



ANDREA LEE
FORMAN
AZ 20118
EXPIRES 12/31/17

COPYRIGHT © 2014 BY FORMAN ARCHITECTS. THIS DRAWING IS AN INSTRUMENT OF PROFESSIONAL SERVICE, IS AND SHALL REMAIN, THE PROPERTY OF FORMAN ARCHITECTS. NO PART OF THIS DRAWING MAY BE REPRODUCED, STORED IN A RETRIEVAL SYSTEM OR TRANSMITTED IN ANY FORM, WITHOUT THE PRIOR WRITTEN APPROVAL OF FORMAN ARCHITECTS.



**FORMAN
ARCHITECTS**

4739 East Virginia Avenue
Phoenix, Arizona
85008.1515

602/339.9084
studio@formanarchitects.com

RETAIL BUILDINGS AT

**7025
RETAIL**

7025 EAST FIRST AVENUE
SCOTTSDALE, ARIZONA
85251

DATE 17 FEB 2015
SCALE AS INDICATED
JOB 1305
REVISION

58-DR-2014
4/7/2015

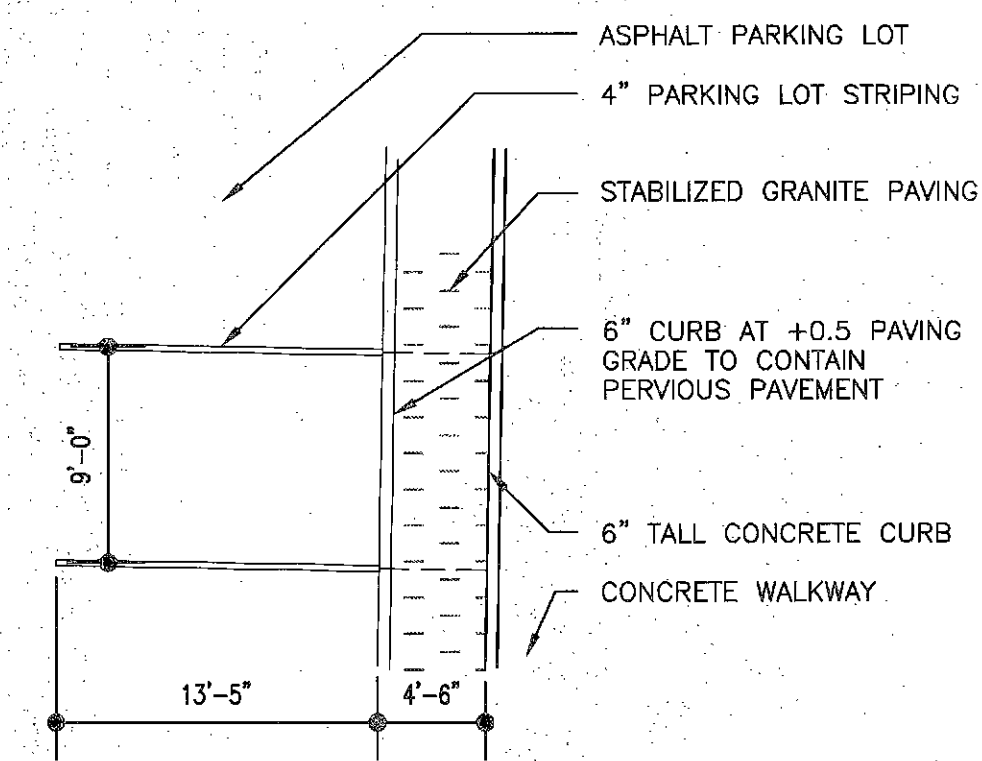
EAST EXTERIOR ELEVATIONS

58-DR-2014
3/11/2015

DO NOT SCALE
DRAWINGS

A4

STIPULATION SET
RETAIN FOR RECORDS
APPROVED
5-21-15 DATE INITIALS



TYP. PARKING STALL DTL. 01

1/8" = 1'-0" 1306-01

SITE PLAN DATA

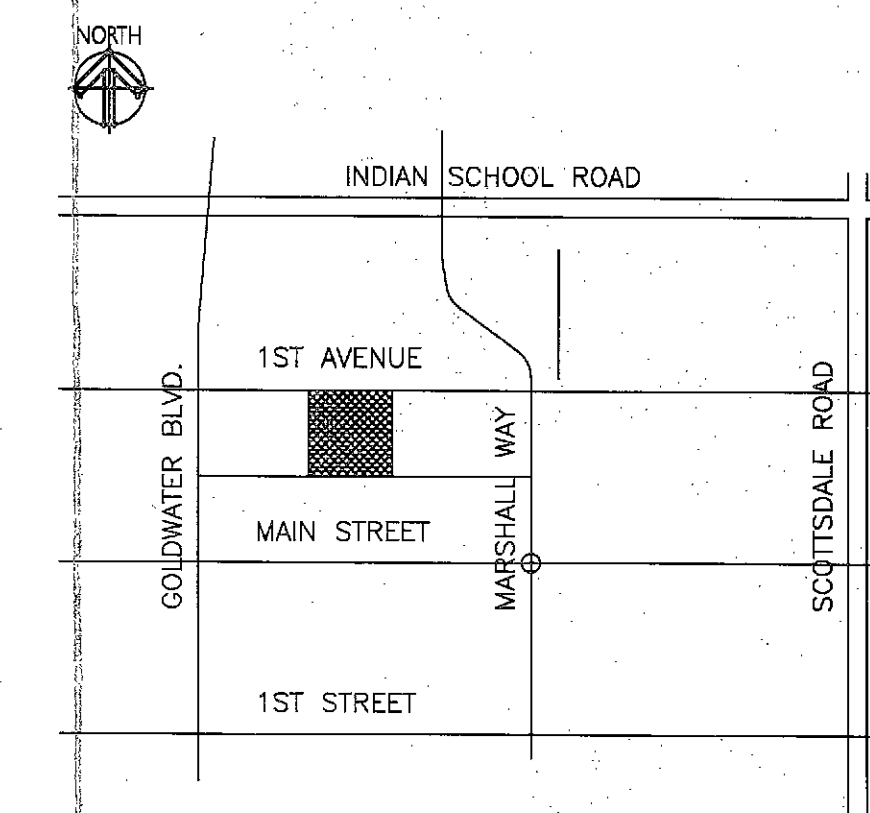
ADDRESS:	7025 EAST FIRST AVENUE
APN:	130-12-056
GROSS LOT AREA:	23,450 SF
NET LOT AREA:	19,200 SF
ZONING:	C2 DOWNTOWN OVERLAY, TYPE 2 WITH TYPE 1 AREAS ABUTTING TO THE SOUTH AND EAST
USE:	RESTAURANTS
CFAR:	23,450 x 1.3 = 30,485 ALLOWABLE BUILDING AREA
BUILDING AREA:	EAST 3,425 GSF WEST 2,634 GSF TOTAL 6,059 GSF
SETBACKS:	0'
SIDES AND REAR:	0'
FRONT:	20' TO BACK OF CURB
HEIGHT:	36' EXCLUDING ROOFTOP APPURTENANCES - ONE-STORY ANTICIPATED
PARKING ANALYSIS:	
REQUIRED:	
BUILDINGS:	EAST - 3,244 NSF WEST - 2,338 NSF TOTAL 5,580 NSF
	5,560/300 = 19 SPACES
PATIOS:	EAST - 451 SF WEST - 248+668 SF TOTAL 1,368 SF
	1,368 - 500/350 = 3 SPACES
TOTAL REQUIRED:	22 SPACES
PROVIDED:	26 SPACES
REQUIRED ACCESSIBLE PARKING ANALYSIS:	
REQUIRED:	22 x 4% = 1 SPACE
PROVIDED:	2 SPACES

SITE PLAN PLAN NOTES

- 5'-0" MINIMUM CONCRETE WALK
- TUBE PIPE BIKE RACK - 2 BIKES MINIMUM
- TRASH ENCLOSURE PER CITY STANDARD 2146; CMU TO MATCH BUILDING BLOCK COLOR AND STYLE
- ELECTRICAL TRANSFORMER (EQUIPMENT CLEARANCE REQUIREMENTS INDICATED WITH DASHED LINE)
- STABILIZED GRANITE (PERMEABLE PAVING) AT HEAD OF PARKING STALL WITH 4" CONCRETE EDGE
- ASPHALT PAVING
- 6" HIGH x 6" WIDE CONCRETE CURBING
- LANDSCAPE AREA; REFERENCE LANDSCAPE PLAN
- ACCESSIBLE ROUTE INDICATED WITH HEAVY DASHED LINE AND ARROW
- 5'-0" TALL SCREEN WALL; CMU TO MATCH BUILDING BLOCK; COLOR, NO. STYLE
- LINE OF CANOPY OR ROOF OVERHEAD
- PARKING STRIPE
- SITE VISIBILITY TRIANGLE PER FIGURE 5.3-26 AT DESIGN STANDARDS NO. POLICY MANUAL
- EXISTING PUBLIC SIDEWALK
- ACCESSIBLE PARKING WITH 5'-0" ACCESSIBLE AISLE, CURB RAMP AND SIGNAGE
- RECONFIGURED STREET PARKING STRIPING
- METAL EQUIPMENT SCREEN WALL
- 3'-0" TALL MASONRY PATIO WALL; CMU PER ELEVATIONS
- SITE LIGHTING (POLE OR WALL MOUNT); REFERENCE SITE LIGHTING ANALYSIS AND OUT SHEETS
- POWER POLE WITH EXISTING TRANSFORMERS/ALLEY LIGHTING AT BOTH LOCATIONS

STIPULATION SET
RETAIN FOR RECORDS
APPROVED
DATE 5-21-15

VICINITY MAP

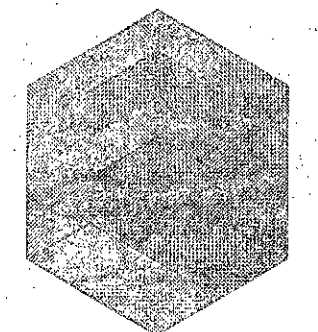


DRB 58 DR 2014

**PRELIMINARY
DRB SUBMITTAL SET**

ANDREA LEE
FORMAN
AZ 20118
EXPIRES 12/31/17

COPYRIGHT © 2014 BY FORMAN ARCHITECTS. THIS DRAWING, AS AN INSTRUMENT OF PROFESSIONAL SERVICE, IS AND SHALL REMAIN, THE PROPERTY OF FORMAN ARCHITECTS. NO PART OF THIS DRAWING MAY BE REPRODUCED, STORED IN A RETRIEVAL SYSTEM OR TRANSMITTED IN ANY FORM, WITHOUT THE PRIOR WRITTEN APPROVAL OF FORMAN ARCHITECTS.



**FORMAN
ARCHITECTS**

4739 East Virginia Avenue
Phoenix, Arizona
85008.1515

602/339.9084
studio@formanarchitects.com

RETAIL BUILDINGS AT

**7025
RETAIL**

68-DR-2014
4/7/2015

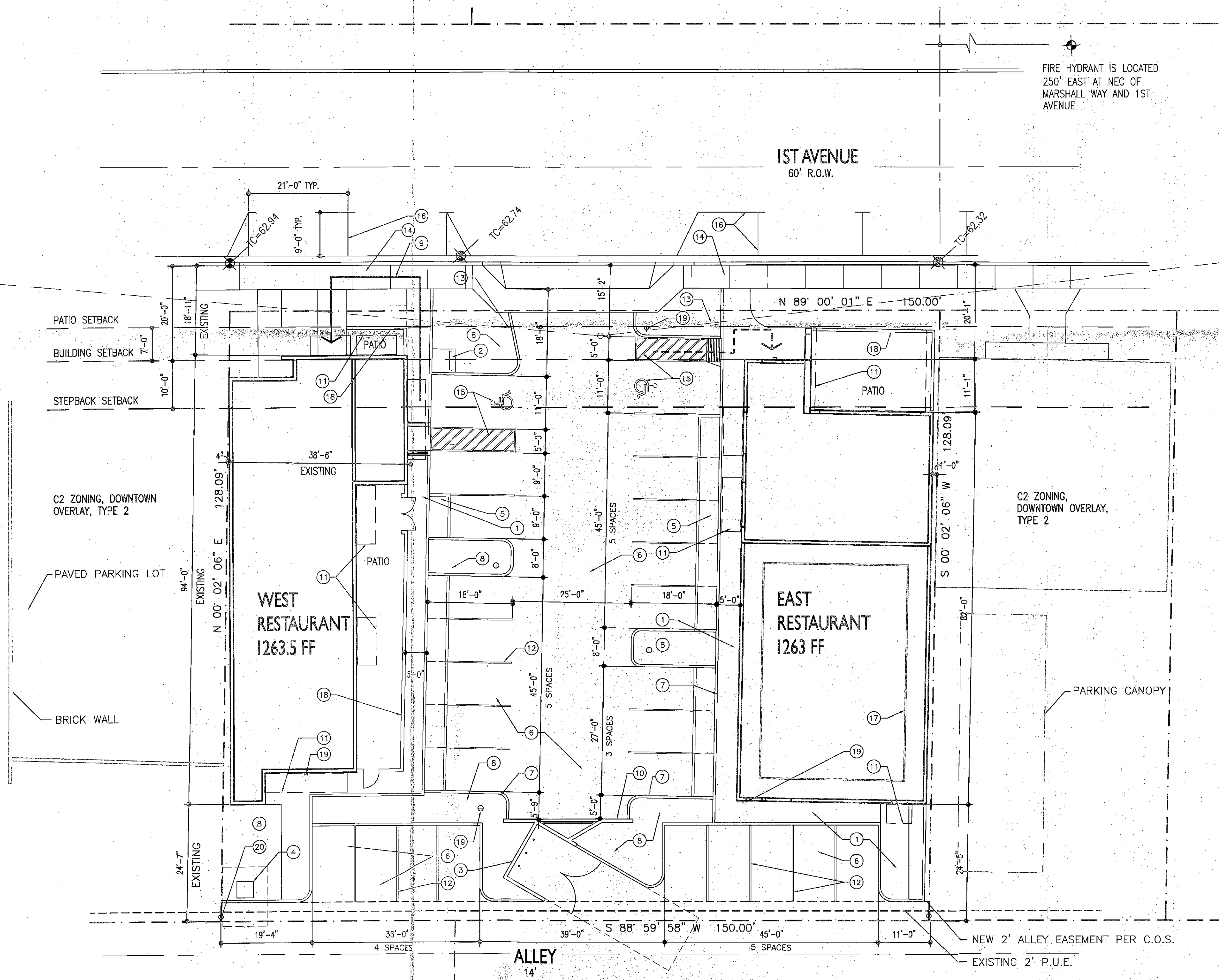
7025 EAST FIRST AVENUE
SCOTTSDALE, ARIZONA
85251

DATE 09 MAR 2015
SCALE AS INDICATED
JOB REVISION 1305

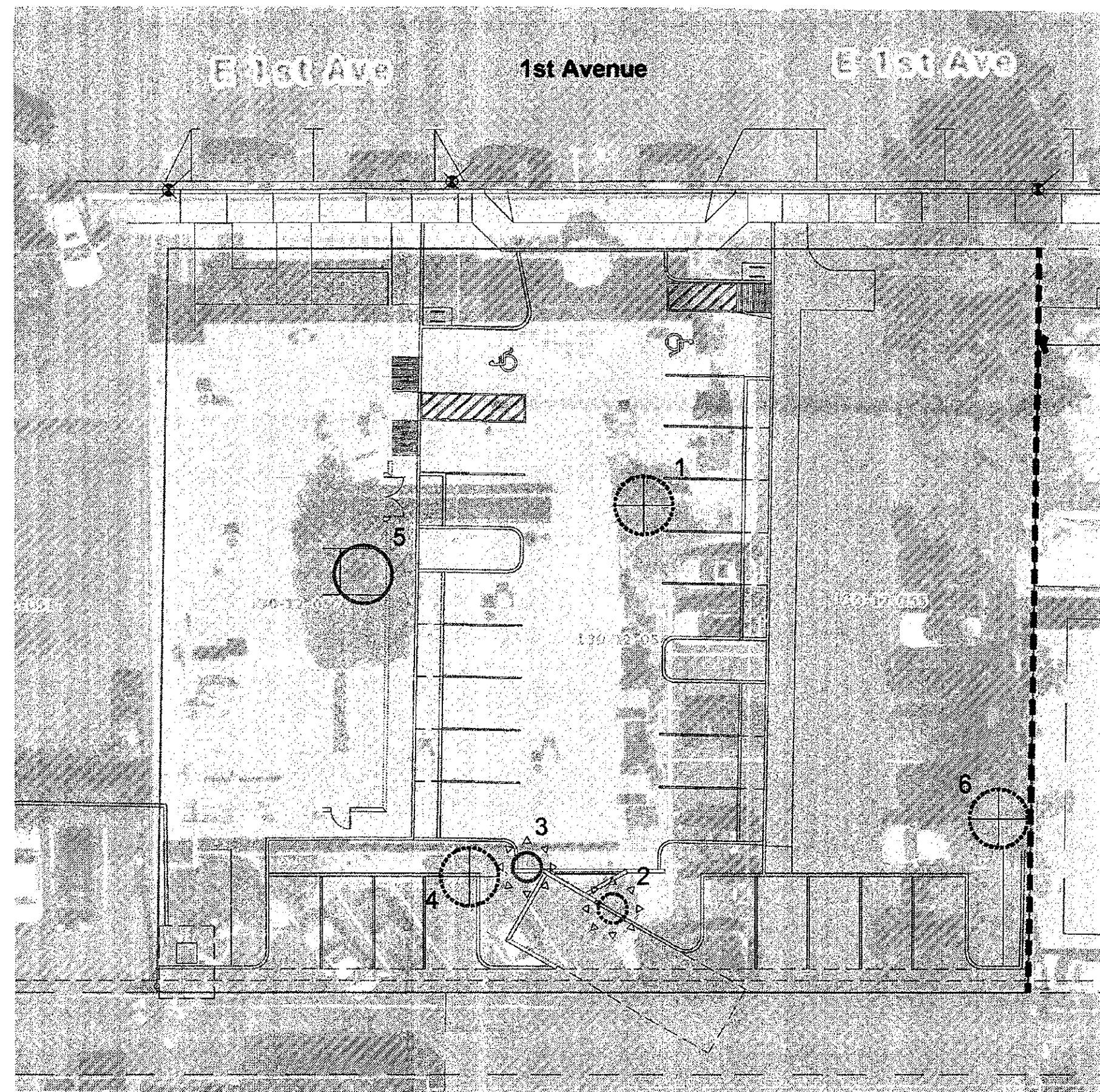
SITE PLAN

DO NOT SCALE
DRAWINGS

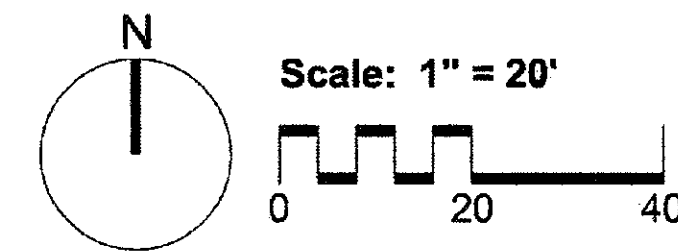
AI



CALL TWO WORKING DAYS
BEFORE YOU DIG
(602) 263-1100
1-800 STAKE IT
(OUTSIDE MARICOPA COUNTY)



Nursery Note-
No nursery needed. Salvageable cacti to be directly relocated.



Plant #	Common Name	Caliper (in)/ Height (ft)	Status	Comments
1	Olive Tree	26	NS	Trunk Form / Cambium Damage
2	Cereus	7	NS	Declining / Wide Base
3	Pendula Yucca	4	S	
4	Tawehia Lean	7	NS	Trunk Form / Leaning
5	Orchid tree	18	RIP	
6	Yellow Oleander	4	NS	Exposed Roots
Summary				
		Trees	Cacti	Legend
	Salvageable	0	1	S = Salvageable
	Non-Salvageable	3	1	NS = Non-Salvageable
	Remain-In-Place	1	0	RIP = Remain-In-Place
	Total	4	2	

Plant Legend

- ⊕ Tree - Salvageable
- ⊖ Tree - Non-Salvageable
- Tree - Remain In Place
- ⊕ Cacti - Salvageable
- ⊖ Cacti - Non-Salvageable
- Cacti - Remain In Place

Project Consultants

Salvage Contractor **Native Resources International**
1540 West Happy Valley Road
Phoenix, Arizona 85085
623-869-6757 (p) • 623-869-6769 (f)
Contact: Kevin Brenda

APPROVED
FINAL PLANS PLANNING
[Signature]

Native Resources International
1540 W Happy Valley Rd.
Phoenix, AZ. 85085
Phone (623) 869-6757
Fax (623) 869-6769

Scottsdale Retail 7025
7025 E. 1st Avenue
Scottsdale, Arizona
Native Plant Inventory

DATE: 6/1/2015
REVISION:
SCALE: 1" = 20"
CHECKED:
DRAWN: KB
SHEET **1** OF 1

6-2-15 KFB

2879-15