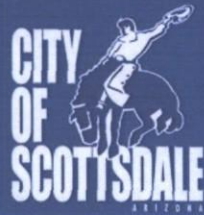


**Simulations
Records Packet
Photos
All Graphics (no plans)**



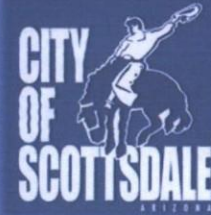
Pink Pony

3-HP-2013

Coordinator: Dan Symer, AICP

October 10, 2013

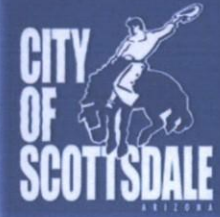
Pink Pony



CONTEXT AERIAL

3-HP-2013

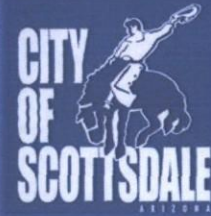
Pink Pony



CLOSE-UP AERIAL

3-HP-2013

Pink Pony



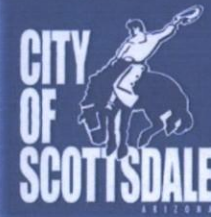
Background



- Established in 1947
- Relocated to the subject building in 1970
- May, 2004 the building was placed on the Historic Register and the Historic Property Overlay was applied
- March, 2005 the Historic Preservation Plan: Design Guidelines approved by Historic Preservation Commission.
- October, 2011 Historic Preservation Commission Building Elevation Modification.
- September, 2013 the Historic Preservation Commission continued the application to a future date.

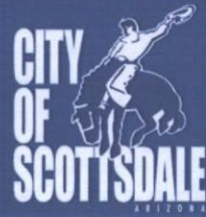
3-HP-2013

Pink Pony



OPTIONS FOR CERTIFICATE OF APPROPRIATENESS:

- Approve as submitted with statements relating to how the project meets the guidelines
- Approve selected elements, deny others, with statements referring to the relevant design guidelines for decision
- Approve with stipulations
- Continue the case to allow the applicant additional time to make revisions to the application or provide information
- Deny as submitted with statements relating to how the project does not meet the guidelines



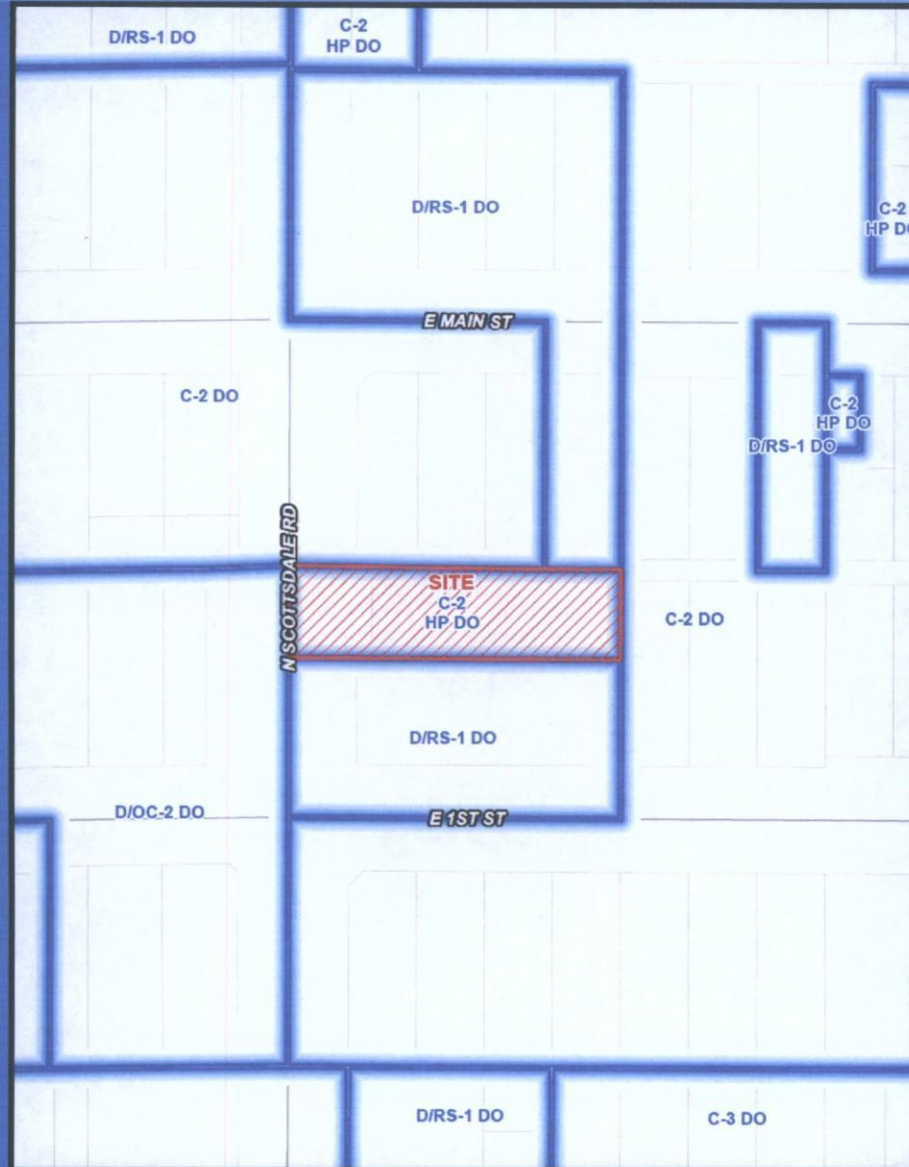
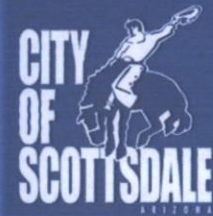
Pink Pony

3-HP-2013

Coordinator: Dan Symer, AICP

October 10, 2013

Pink Pony



ZONING

3-HP-2013



S.E. VIEW SIDEWALK NARROW
(6'-0" WIDE)



VALET →

NARROW SIDEWALK NARROW PATIO

1/2



SIDEWALK @ ALLEY



LOOKING NORTH @ BANDERAS



LIMITED OUTDOOR SEATING

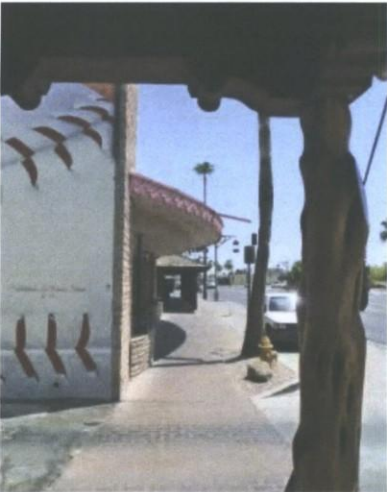
Existing Context Images



View of Sidewalk (6'- 0" wide)



Narrow Sidewalk & Narrow Patio



Sidewalk & Alley



Alley & Adjacent Bldg.



Narrow Sidewalk

Existing Context Images



View of Front Facade



View of Pink Pony & Bandera to 1st Street



View of Pink Pony & AZ Tec



Looking North at Bandera



Limited Outdoor Seating

Existing Context Images

ERIC HADWIN PRODUCTIONS



View of Sidewalk (6'- 0" wide)



Narrow Sidewalk & Narrow Patio



Sidewalk & Alley



Alley & Adjacent Bldg.



Narrow Sidewalk

Existing Context Images



View of Front Facade



View of Pink Pony & Bandera to 1st Street



View of Pink Pony & AZ Tec



Looking North at Bandera



Limited Outdoor Seating

PINK PONY
STEAK HOUSE



PINK PONY
STEAK HOUSE

