

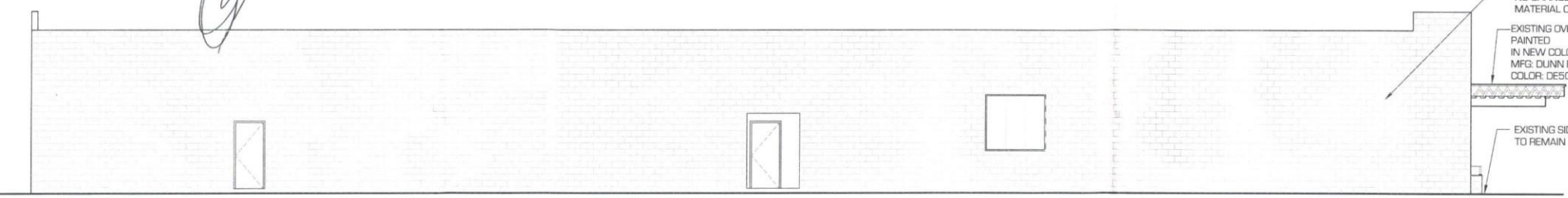


bar napkin productions, llc
 808 e osborn rd . suite #101
 phoenix, az 85014
 602.492.9494
 www.bnp-llc.com



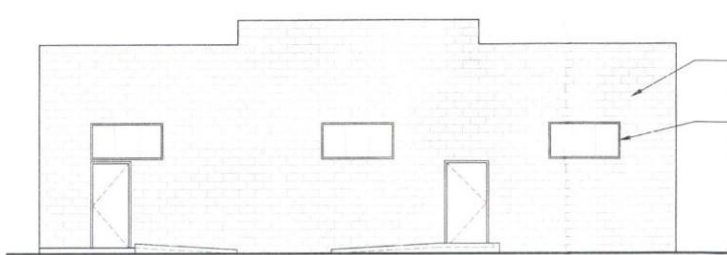
1 WEST EXTERIOR ELEVATION
 SCALE: 1/4" = 1'-0"

STIPULATION SET
 RETAIN FOR RECORDS
 INITIALS: [Signature]
 DATE: 10/20/13



EXISTING BLOCK
 NO CHANGE TO EXISTING
 MATERIAL COLOR OR FINISH.
 EXISTING OVERHANG TO BE
 PAINTED
 IN NEW COLOR-
 MFG: DUNN EDWARDS
 COLOR: DE5027 RAZZLE DAZZLE
 EXISTING SIDEWALK
 TO REMAIN

2 NORTH EXTERIOR ELEVATION
 SCALE: 1/8" = 1'-0"



EXISTING BLOCK
 NO CHANGE TO EXISTING
 MATERIAL COLOR OR FINISH.
 EXISTING WINDOW TO BE CLEAN &
 REPAINT, REPLACE
 EXISTING GLASS IF BROKEN, TYP.

3 EAST EXTERIOR ELEVATION
 SCALE: 1/8" = 1'-0"

EXISTING BLOCK
 NO CHANGE TO EXISTING
 MATERIAL COLOR OR FINISH.
 EXISTING OVERHANG TO BE
 PAINTED IN NEW COLOR-
 MFG: DUNN EDWARDS
 COLOR: DE5027 RAZZLE DAZZLE
 EXISTING SIDEWALK
 TO REMAIN

4 SOUTH EXTERIOR ELEVATION
 SCALE: 1/8" = 1'-0"

PROGRESS
 DRAWINGS
 NOT FOR
 CONSTRUCTION

PINK PONY

PROJECT LOCATION
 3831 N. SCOTTSDALE RD
 SCOTTSDALE, AZ 85251

ISSUE DATE
 HISTORICAL SUBMITAL 10.02.13

EXTERIOR
 ELEVATION

BN1145
 A4.0

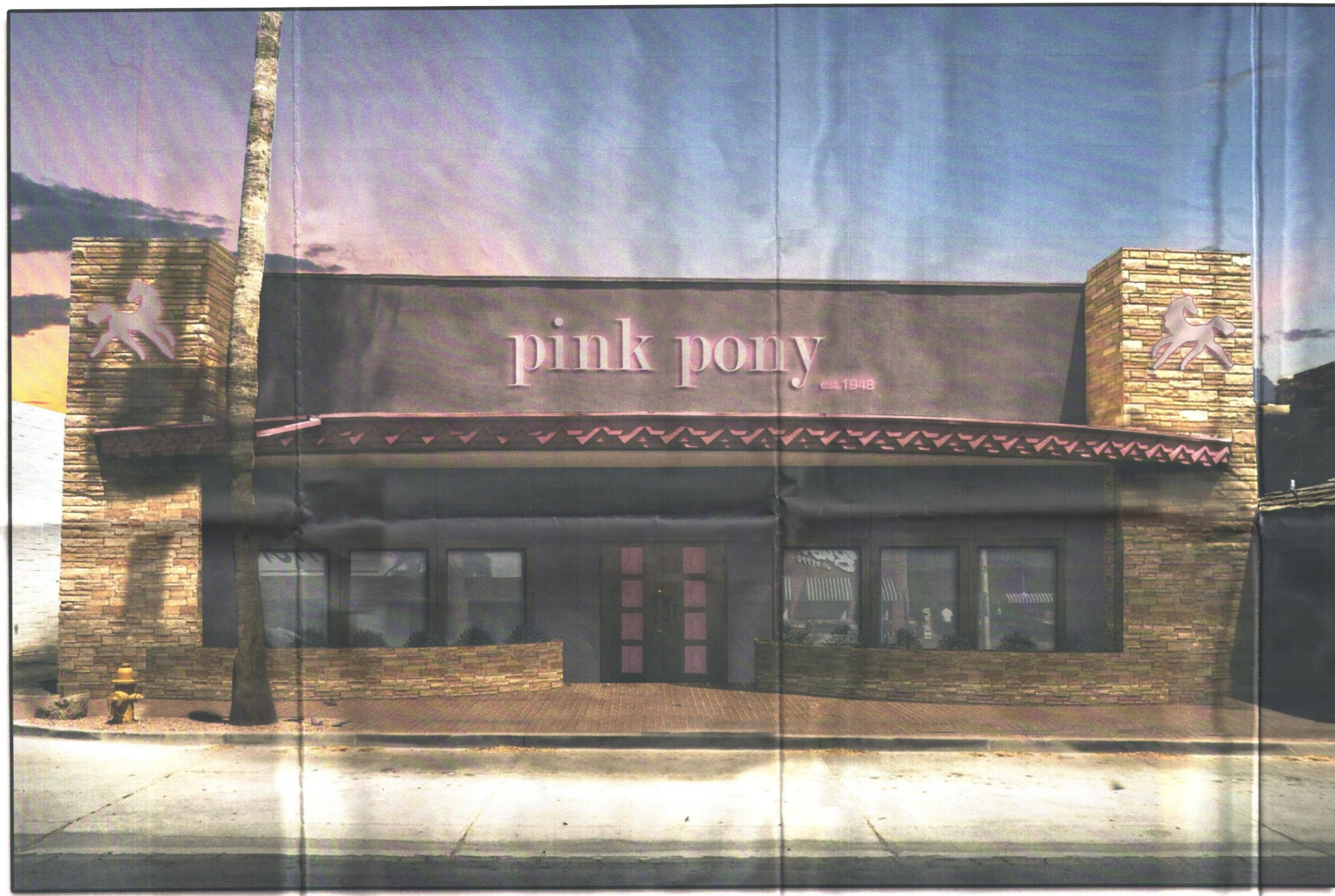
IF THIS DRAWING IS AN INSTRUMENT OF SERVICE AND THE PROPERTY OF BNP NAPKIN, LLC, THIS DRAWING MAY NOT BE REPRODUCED OR DELIVERED IN ANY MANNER WITHOUT THEIR WRITTEN PERMISSION.



bar napkin productions, llc
808 e osborn rd . suite # 101
phoenix, az 85014
602.492.9494
www.bnpp-llc.com

PROGRESS
DRAWINGS

NOT FOR
CONSTRUCTION



THIS DRAWING IS AN INSTRUMENT OF SERVICE AND THE PROPERTY OF BAR NAPKIN, LLC. THIS DRAWING MAY NOT BE REPRODUCED OR UTILIZED IN ANY MANNER WITHOUT THE WRITTEN PERMISSION.

PINK PONY

PROJECT LOCATION

3831 N. SCOTTSDALE RD
SCOTTSDALE, AZ 85251

ISSUE DATE

HISTORICAL SUBMITAL 10.02.13

BN1145