

Full Size

8.5 x 11

11 x 17

(site plan, landscape, elevations)

GREENWAY-HAYDEN LOOP

BUILDING A

BUILDING B

BUILDING C

SUITE C-22

73RD STREET

GREENWAY ROAD



Preliminary Site Plan

SCALE: +/- 1" = 30'

March 10, 2011

M.M.RX

15455 N. Greenway-Hayden Loop, Suite C-22
Scottsdale, AZ 85160 APN - 215-44-001-K
Zoning I-1

PHXIRCH
PHOENIX ARCHITECTURE

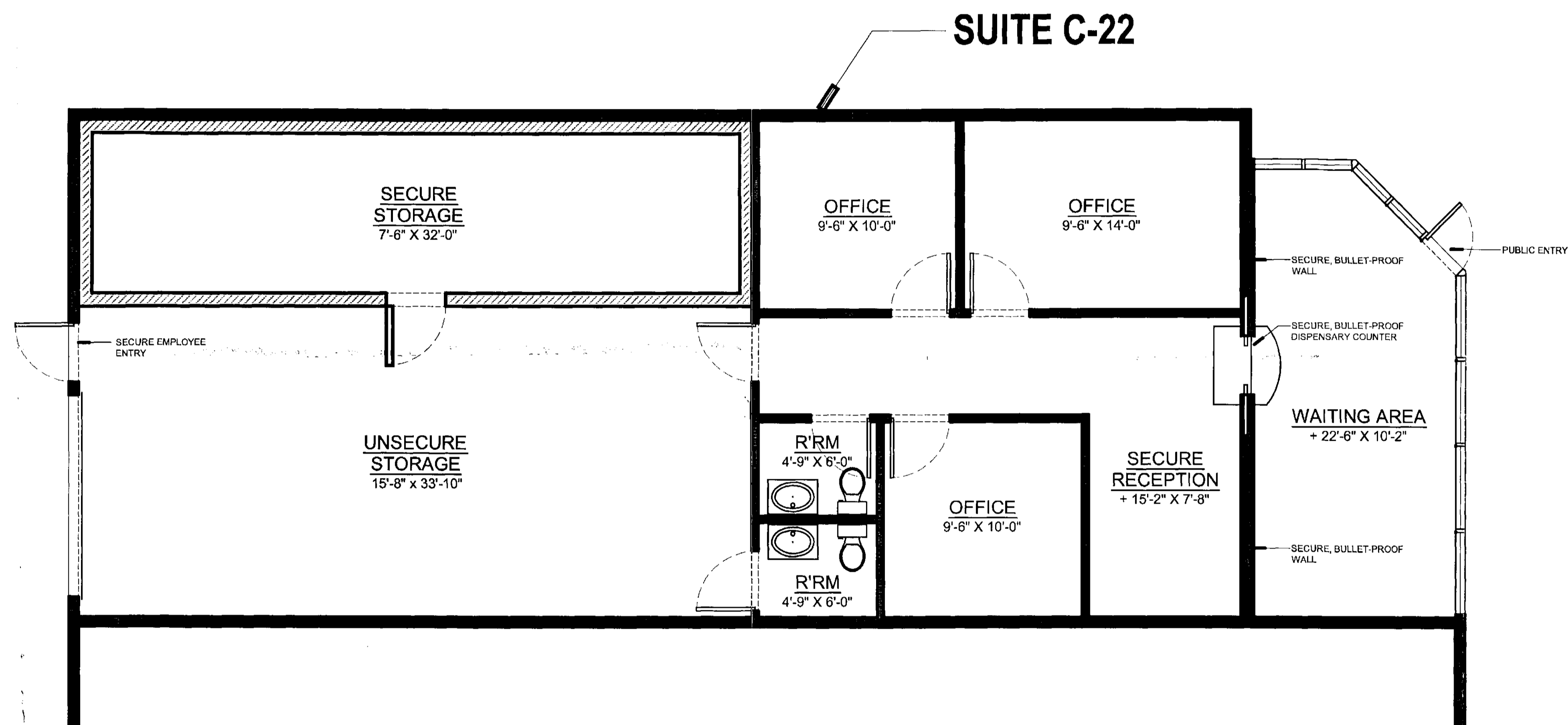
M.M.RX

15455 N. Greenway-Hayden Loop, Suite C-22
Scottsdale, AZ 85160 APN - 215-44-001-K
March 9, 2011
Zoning I-1
Preliminary Site Plan

sheet

A

sheet **B**



Preliminary Floor Plan

SCALE: 1/4" = 1'-0" March 10, 2011

M.M.RX

15455 N. Greenway-Hayden Loop, Suite C-22
Scottsdale, AZ 85160 APN - 215-44-001-K
Zoning I-1 Total U.S.F. - 1,944 sq. ft.

M.M.RX

15455 N. Greenway-Hayden Loop, Suite C-22
Scottsdale, AZ 85160 APN - 215-44-001-K
March 9, 2011
Zoning I-1
Preliminary Site Plan

