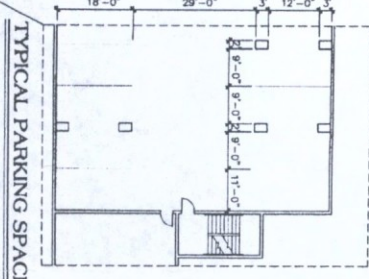
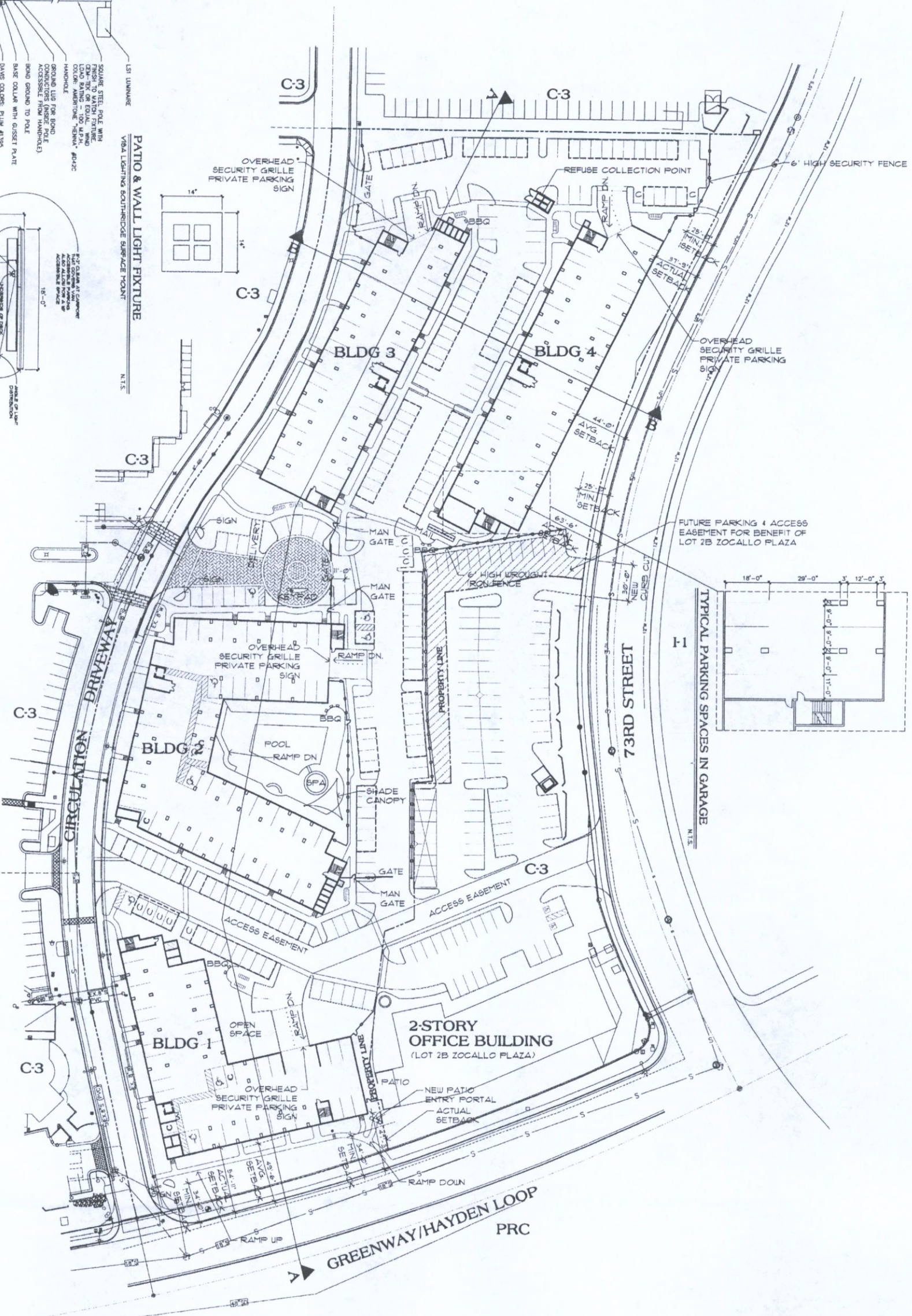
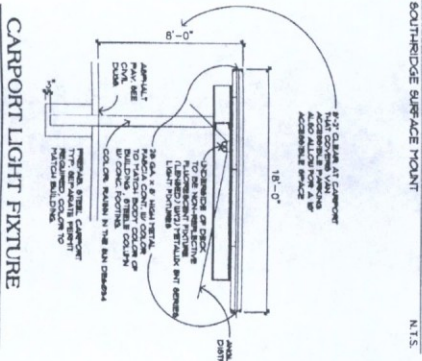
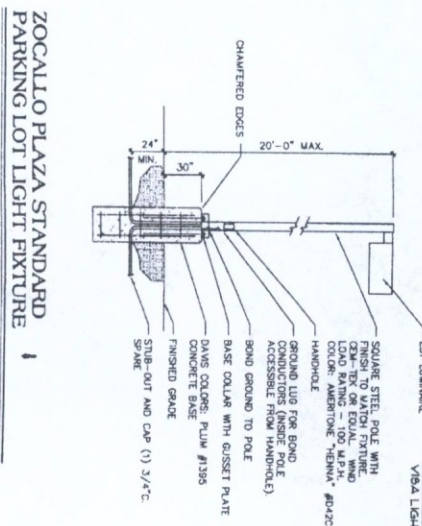


Simulations
Records Packet
Photos
All Graphics (no plans)



PRELIMINARY BASEMENT PARKING PLAN

SCALE: 1" = 40'-0"

AS 1.1

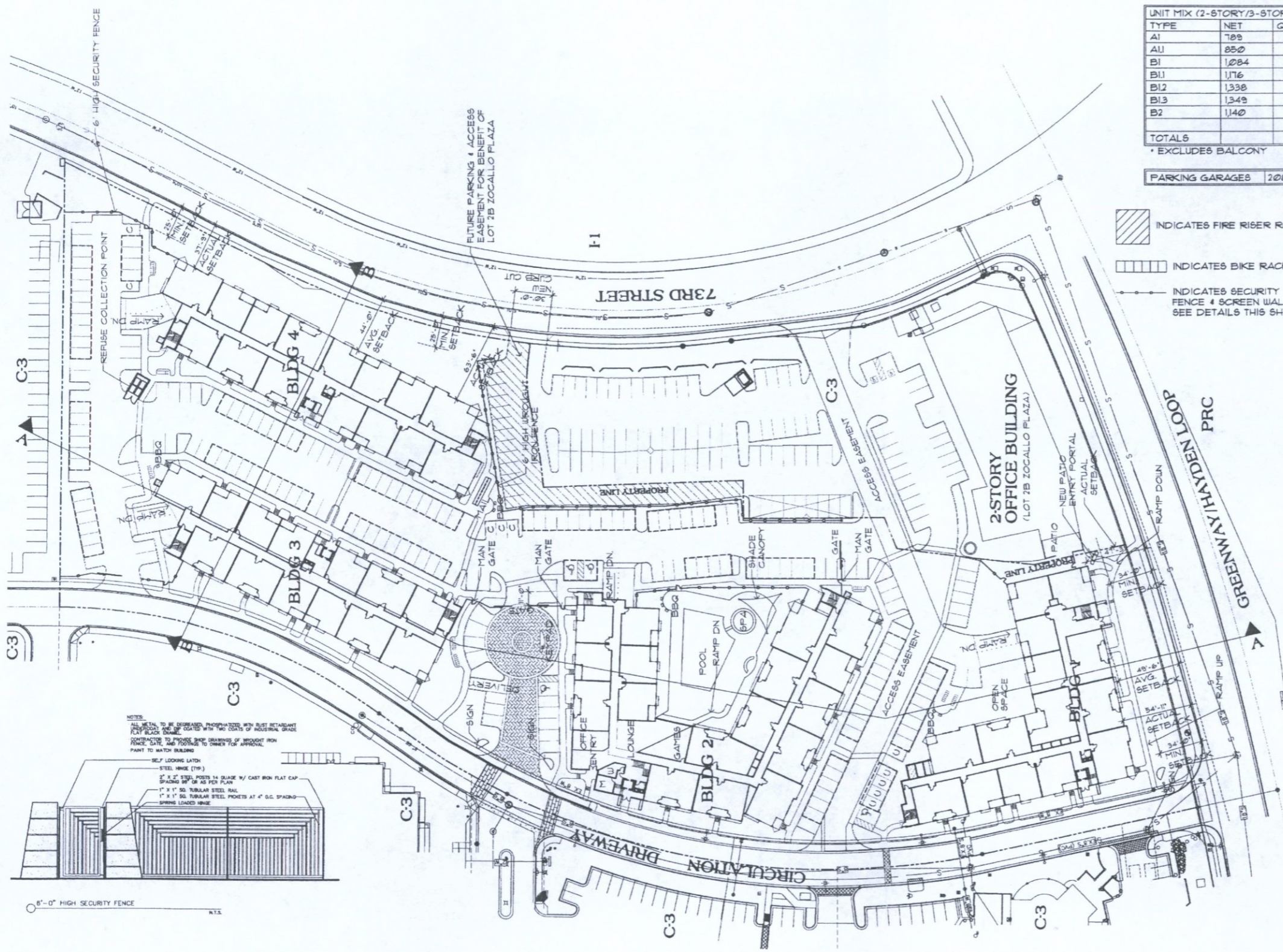
BSMNT PLAN The Residences At Zocallo Plaza
 Scale: 1" = 40'-0"
 15440 N. Greenway-Hayden Loop
 Scottsdale, AZ. 85260

Contractor must verify all dimensions at project before proceeding with this work. Do not reproduce these drawings & specifications without the expressed written permission of the architect. The drawings & specifications are instruments of service and shall remain the property of the Architect whether the project for which they are made is executed or not. These drawings & specifications shall not be used by anyone on any other projects, for additions to this project, or for completion of this project by others except by the expressed written permission of the Architect.
 Copyright © L.R. Niemiec Architects Inc. 2011 All Rights Reserved

L.R. Niemiec Architects

L.R. NIEMIEC ARCHITECTS/PLANNERS, INC. • 8585 EAST HARTFORD DRIVE, SUITE 155 • SCOTTSDALE ARIZONA 85255 • (480) 998-7576

10-ZN-2011
 2nd: 9/9/2011



PROJECT DATA (THIS PROJECT WILL BE CONSTRUCTED IN ONE PHASE)

PARCEL SIZE: 5.83 +/- NET ACRES 6.42 GROSS ACRES
 EXISTING ZONING: C-3
 DENSITY: 4116 DU/NET ACRE 3138 DU/GROSS ACRES

UNIT MIX (2-STORY/3-STORY)

TYPE	NET	QUANTITY	%	GROSS	BALCONY SF.	* GROSS SF.
A1	789	110	46	833	70x110 = 7,700	91,630
A11	850	8	3.25	897	70x8 = 560	7,176
B1	1,084	76	31	1,136	102x76 = 7,752	86,336
B11	1,176	4	2	1,234	198x4 = 792	4,936
B12	1,338	4	2	1,399	103x4 = 412	5,596
B13	1,349	2	.75	1,410	103x2 = 206	2,820
B2	1,140	36	15	1,190	76x40 = 3,040	42,840
TOTALS		240	100	1,005 AVG.	20,462 SF.	241,334 SF.

PARKING GARAGES 208 SPACES **GROSS SF.** 15,025 SF.

- INDICATES FIRE RISER ROOM
- INDICATES BIKE RACK
- INDICATES SECURITY FENCE & SCREEN WALL SEE DETAILS THIS SHEET

COMMON AREAS

TYPE	GROSS SF.
CLUBHOUSE/OFFICE	6,730
MAINTENANCE	600
MAIL	108
STORAGE *	7,582
TOTAL COMMON AREAS	14,650 SF.

CORRIDORS GROSS SF.

1ST FLOOR	9,431
2ND FLOOR	9,431
3RD FLOOR	9,431
4TH FLOOR	9,431
BALCONIES	20,462
TOTAL	58,186

SUMMARY OF TOTAL BUILDINGS

	GROSS SF.
APARTMENTS	241,334
GARAGES	15,025
CORRIDORS/BALCONIES	58,186
COMMON AREAS	14,650
TOTALS	389,195 SF.

PARKING CALCULATIONS

PARKING REQUIRED	
1 BED, 1 BATH: 122x13	158.6 SPACES
2 BED, 2 BATH: 118x17	200.6 SPACES
TOTAL PARKING REQ. *	359.2 OR 149
PARKING PROVIDED	
GARAGE	208
SURFACE SPACES	203 (120 CARPORT)
ACCESSIBLE SPACES (2% MIN.)	9
TOTAL PARKING PROVIDED *	411 OR 1712

BUILDING CODES-2006 I.B.C.

OCCUPANCY:
 APARTMENTS: R-2
 CLUBHOUSE: B
 GARAGES: S-2

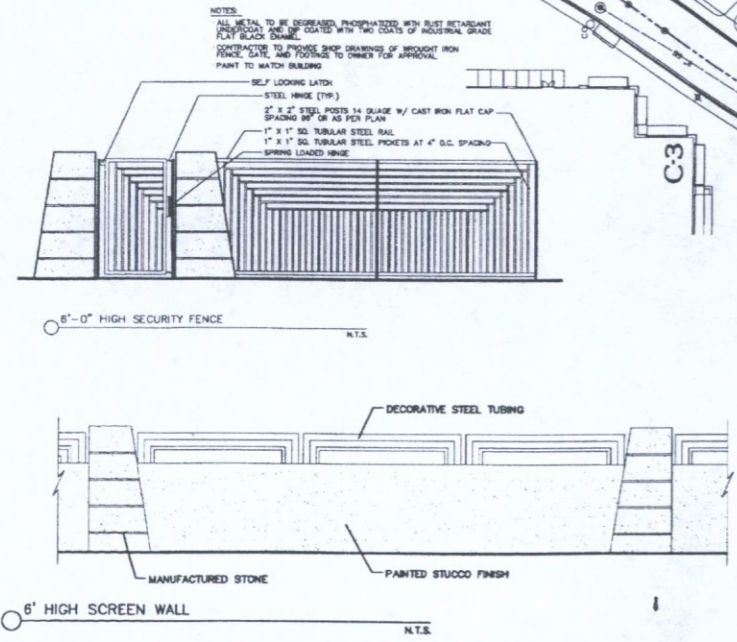
TYPE OF CONSTRUCTION: V-A WITH (2) HOUR OCCUPANCY SEPARATION TO S-2

SPRINKLERED: 13-R APARTMENTS

PROVIDED OPEN SPACE

PRIVATE/BALCONY	20,462 OR 8.4%
FRONTAGE	18,063
COMMON	36,671
PARKING LANDSCAPE	16,210
TOTAL	94,406 SF OR 35.9%

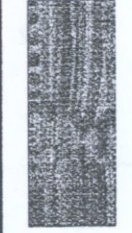
- NOTE:**
- ALL FLOORS SHALL BE FAIR HOUSING COMPLIANT. ALL PUBLIC BUILDINGS & SITE AMENITIES SHALL BE ADA ACCESSIBLE.
 - ALL PARKING LOT LIGHTING SHALL MATCH ZOCALLO PLAZA DESIGN STANDARDS



PRELIMINARY SITE PLAN

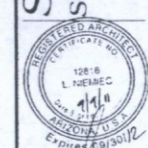
SCALE: 1"=40'-0"

The Residences At Zocallo Plaza
 15440 N. Greenway-Hayden Loop
 Scottsdale, AZ. 85260
 Site Plan
 Scale: 1" = 40'-0"
 AS1



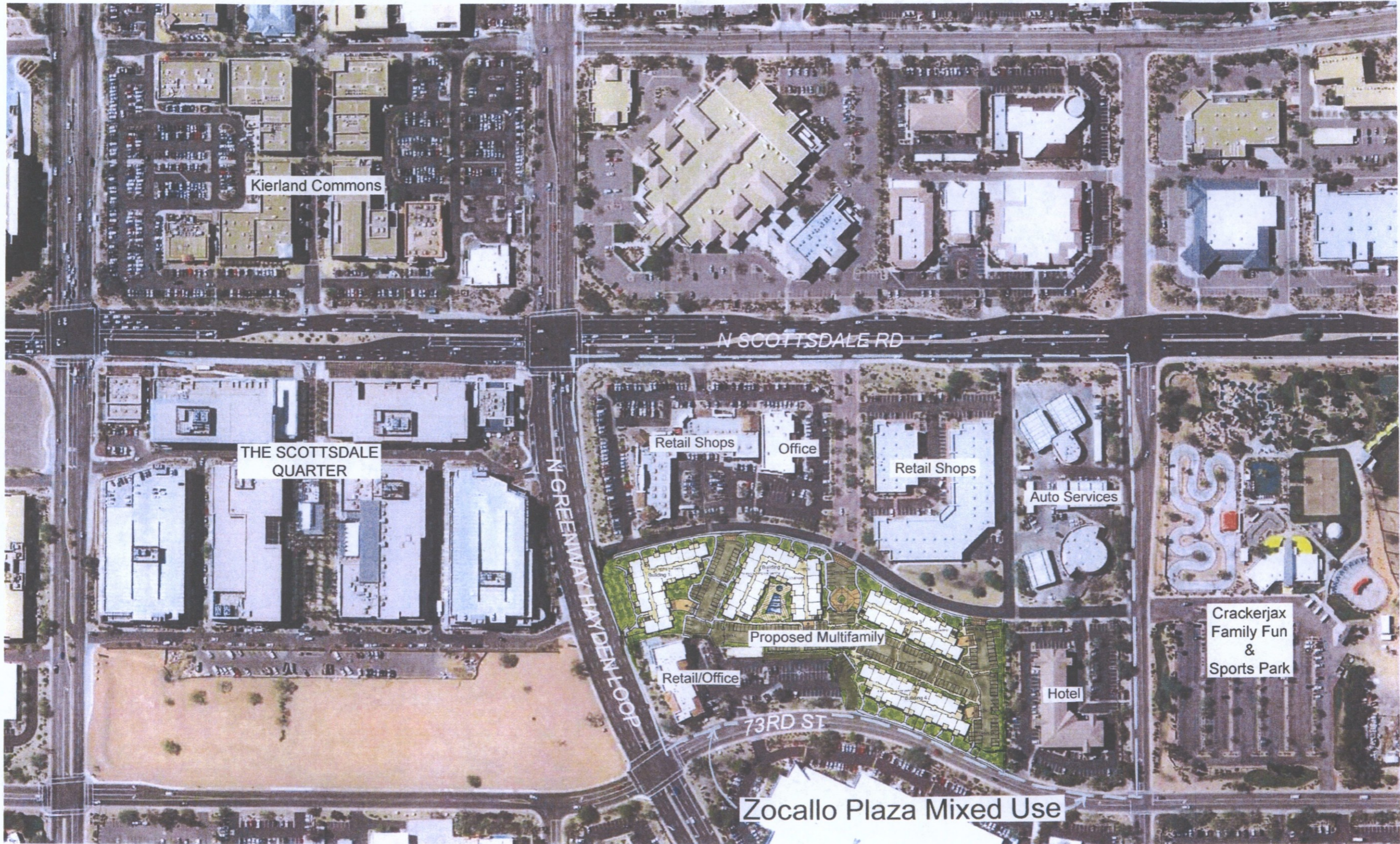
L.R. Niemiec Architects
 L.R. NIEMIEC ARCHITECTS/PLANNERS, INC. • 8585 EAST HARTFORD DRIVE, SUITE 155 • SCOTTSDALE, ARIZONA 85255 • (480) 998-7576

Contract documents with all amendments of project before proceeding with this project. Do not reproduce these drawings & specifications without the expressed written permission of the architect. The drawings & specifications are instruments of service and shall remain the property of the architect. No part of these drawings & specifications shall not be used by anyone on any other project, for additions to this project, or for completion of this project, without the expressed written permission of the architect. Copyright © L.R. Niemiec Architects Inc. 2011. All Rights Reserved.



AS1

10-ZN-2011
 2nd: 9/9/2011



THE RESIDENCES AT ZOCALLO PLAZA SCOTTSDALE ARIZONA

CONTEXT PLAN

L.R. Niemiec Architects, Inc.

8585 E. Hartford Drive, Suite 115 Scottsdale, AZ 85255 (480)998-7576



DATE: 8-11-11



GILMORE PARSONS

LAND DESIGN GROUP
2211 N. 7th Street, Phoenix, AZ 85006
T 602.266.5622 F 602.266.5707
www.gilmore.com



C-3

C-3

C-3

BLDG 3

BLDG 4

C-3

CIRCULATION DRIVEWAY

BLDG 2

C-3

PROPERTY LINE

73RD STREET

F-1

C-3

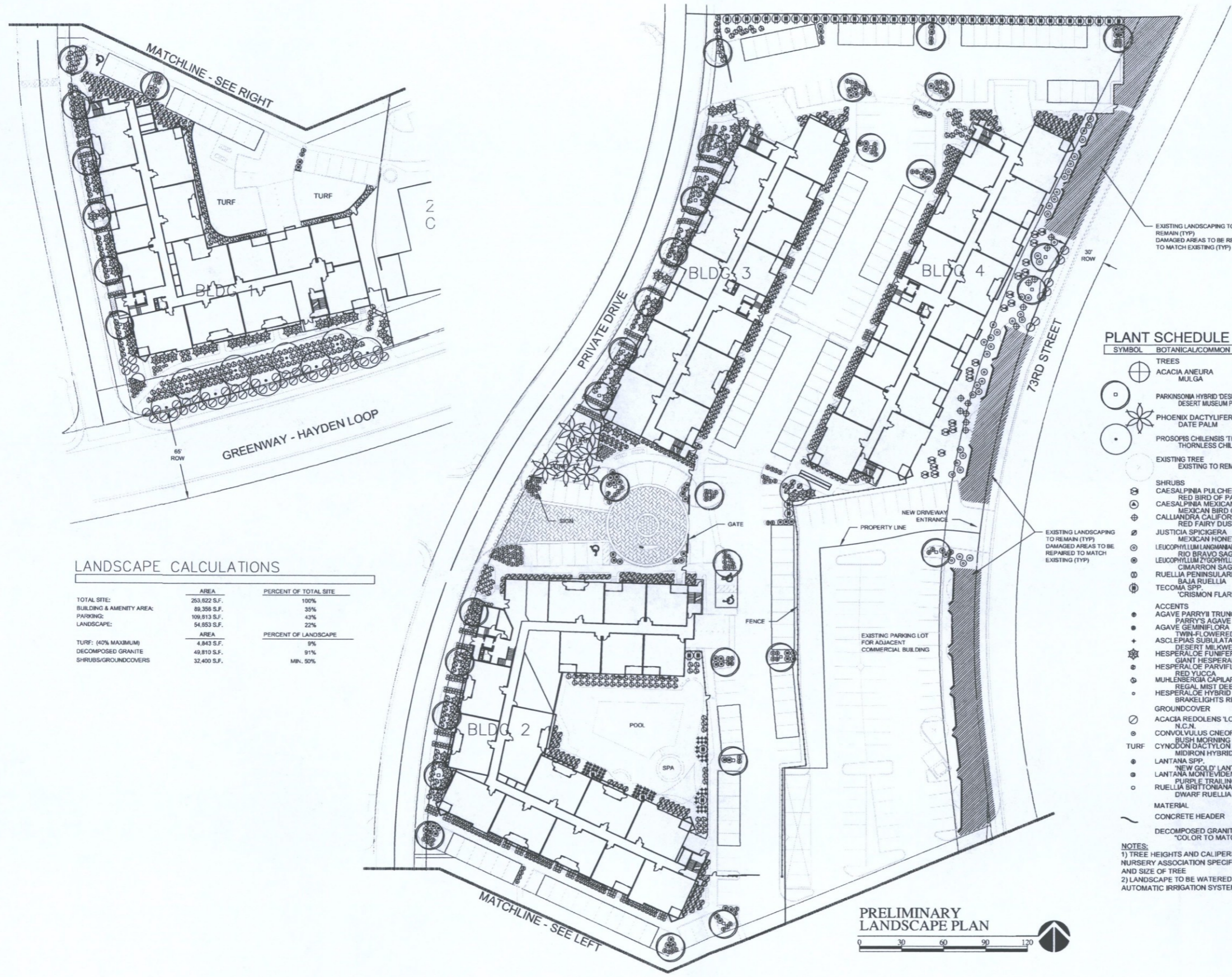
2-STORY OFFICE BUILDING

BLDG 1

C-3

GREENWAY/HAYDEN LOOP
PRC





LANDSCAPE CALCULATIONS

	AREA	PERCENT OF TOTAL SITE
TOTAL SITE:	253,822 S.F.	100%
BUILDING & AMENITY AREA:	89,356 S.F.	35%
PARKING:	109,813 S.F.	43%
LANDSCAPE:	54,653 S.F.	22%
	AREA	PERCENT OF LANDSCAPE
TURF: (40% MAXIMUM)	4,843 S.F.	9%
DECOMPOSED GRANITE	49,810 S.F.	91%
SHRUBS/GROUNDCOVERS	32,400 S.F.	MIN. 50%

PLANT SCHEDULE

SYMBOL	BOTANICAL/Common NAME	CLPR/SIZE
TREES		
⊕	ACACIA ANEURA MULGA	1'15 GAL.
⊙	PARKINSONIA HYBRID 'DESERT MUSEUM' DESERT MUSEUM PALO VERDE	24" BOX
⊗	PHOENIX DACTYLIFERA DATE PALM	25" CLEAR TRUNK
⊖	PROSOPIS CHILENSIS 'THORNLESS' THORNLESS CHILEAN MESQUITE	15 GAL.
EXISTING TREE EXISTING TO REMAIN		
SHRUBS		
⊗	CAESALPINIA PULCHERRIMA RED BIRD OF PARADISE	5 GAL.
⊗	CAESALPINIA MEXICANA MEXICAN BIRD OF PARADISE	5 GAL.
⊗	CALLIANDRA CALIFORNICA RED FAIRY DUSTER	5 GAL.
⊗	JUSTITIA SPICIGERA MEXICAN HONEYSUCKLE	5 GAL.
⊗	LEUCOPHYLLUM LANGSHANENSIS 'RID BRAVO™' RID BRAVO SAGE	5 GAL.
⊗	LEUCOPHYLLUM ZYGOPHYLLUM 'CIMARRON™' CIMARRON SAGE	5 GAL.
⊗	RUPELLIA PENINSULARIS BAJA RUPELLIA	5 GAL.
⊗	TECOMA SPP. 'CRISMON FLARE' JUBILEE	5 GAL.
ACCENTS		
⊗	AGAVE PARRYII TRUNCATA PARRY'S AGAVE	10 GAL.
⊗	AGAVE GEMINIFLORA TWIN-FLOWERED AGAVE	5 GAL.
⊗	ASCLEPIAS SUBULATA DESERT MILKWEED	5 GAL.
⊗	HESPERALOE FUNIFERIA GIANT HESPERALOE	5 GAL.
⊗	HESPERALOE PARVIFLORA RED YUCCA	5 GAL.
⊗	MUHLENBERGIA CAPILLARIS 'REGAL MIST' REGAL MIST DEER GRASS	5 GAL.
⊗	HESPERALOE HYBRID 'BRAKELIGHTS' BRAKELIGHTS RED YUCCA	5 GAL.
GROUNDCOVER		
⊗	ACACIA REDOLENS 'LOW BOY' N.C.N.	1 GAL.
⊗	CONVOLVULUS CNEORUM BUSH MORNING GLORY	1 GAL.
TURF		
⊗	CYNODON DACTYLON 'MIDIRON' MIDIRON HYBRID BERMUDA	SOD
⊗	LANTANA SPP. 'NEW GOLD' LANTANA	1 GAL.
⊗	LANTANA MONTEVIDENSIS PURPLE TRAIL LINK LANTANA	1 GAL.
⊗	RUPELLIA BRITTONIANA 'KATIE' DWARF RUPELLIA	1 GAL.
MATERIAL		
—	CONCRETE HEADER	6" x 6" CURBSTYLE
—	DECOMPOSED GRANITE 'COLOR TO MATCH EXISTING'	1/2" SCREENE

NOTES:
 1) TREE HEIGHTS AND CALIPERS WILL COMPLY WITH "ARIZONA NURSERY ASSOCIATION SPECIFICATIONS" FOR THAT TYPE AND SIZE OF TREE
 2) LANDSCAPE TO BE WATERED BY AN UNDERGROUND AUTOMATIC IRRIGATION SYSTEM.

2211 N. 7th Street
Phoenix, AZ 85006
T: 602.246.5622
F: 602.246.5787
www.gilmore.com

LANDSCAPE ARCHITECTURE
LAND PLANNING

THE RESIDENCES AT ZOCALLO PLAZA
15440 NORTH GREENWAY-HAYDEN LOOP
SCOTTSDALE, AZ 85260
PREPARED FOR: L.R. NIEMIEC ARCHITECTS

JOB NO. 11031
DRAWN BY: TCB
APPROVED BY: SCP
DATE: 6.11.11



REVISIONS:

-
-
-
-



BUILDING 1 WEST ELEVATION
Scale: 1/8" = 1'-0"



BUILDING 1 SOUTH ELEVATION
Scale: 1/8" = 1'-0"

A-3

Elevations
Scale: 1/8" = 1'-0"

The Residences At Zocallo Plaza
15440 N. Greenway-Hayden Loop
Scottsdale, AZ. 85260

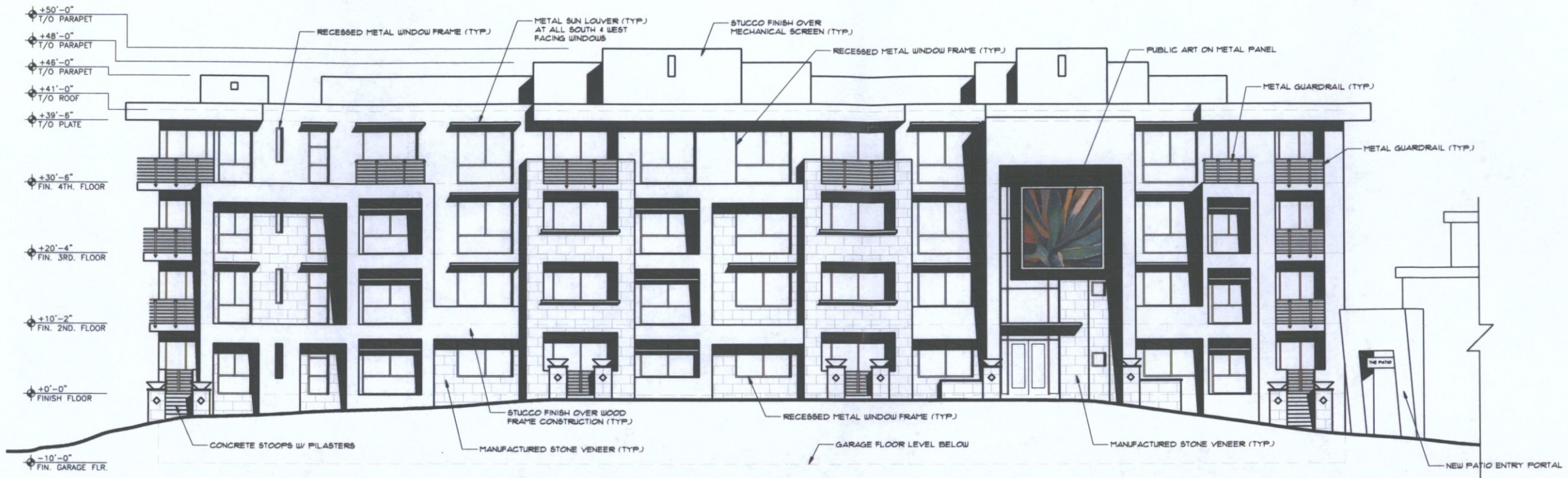
Contractor must verify all dimensions at project before proceeding with this work. Do not reproduce these drawings & specifications without the expressed written permission of the Architects. The drawings & specifications are instruments of service and shall remain the property of the Architect whether the project for which they are made is executed or not. These drawings & specifications shall not be used by anyone on any other projects, for additions to this project, or for completion of this project by others except by the expressed written permission of the Architect.

Copyright © L.R. Niemiec Architects Inc. 2011 All Rights Reserved

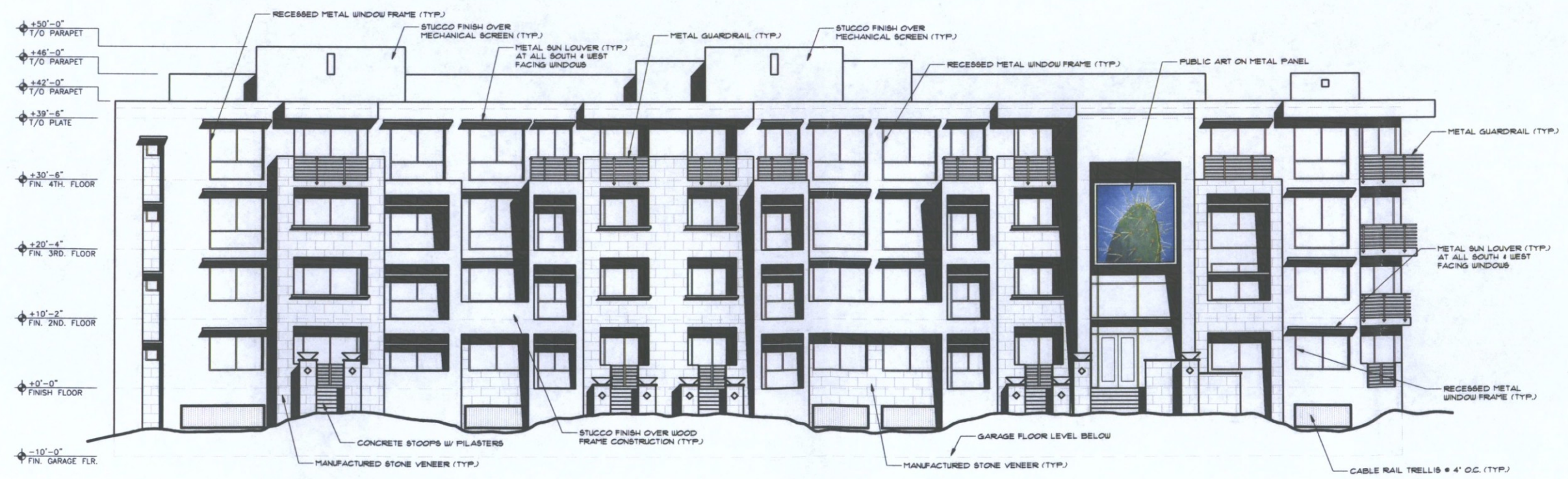
L.R. Niemiec Architects

L.R. NIEMIEC ARCHITECTS/PLANNERS, INC. • 8585 EAST HARTFORD DRIVE, SUITE 155 • SCOTTSDALE ARIZONA 85255 • (480) 998-7576





BUILDING 1 SOUTH ELEVATION
Scale: 1/8" = 1'-0"

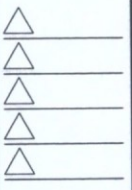


BUILDING 1 WEST ELEVATION
Scale: 1/8" = 1'-0"

The Residences At Zocallo Plaza
15440 N. Greenway-Hayden Loop
Scottsdale, AZ. 85260

Elevations
Scale: 1/8" = 1'-0"

Contractor must verify all dimensions at project before proceeding with the construction. The drawings are the property of L.R. Niemiec Architects, Inc. and shall remain the property of L.R. Niemiec Architects, Inc. These drawings and specifications shall not be used for any other projects, for additions to this project, or for completion of the project by others except by the expressed written permission of the architect.
Copyright - L.R. Niemiec Architects Inc. 2011 All Rights Reserved



L.R. Niemiec Architects
L.R. NIEMIEC ARCHITECTS/PLANNERS, INC. • 8585 EAST HARTFORD DRIVE, SUITE 155 • SCOTTSDALE, ARIZONA, 85255 • (480) 998-7576



METAL GUARDRAIL (TYP.)

METAL SUN LOUVER (TYP.)
AT ALL SOUTH & WEST
FACING WINDOWS

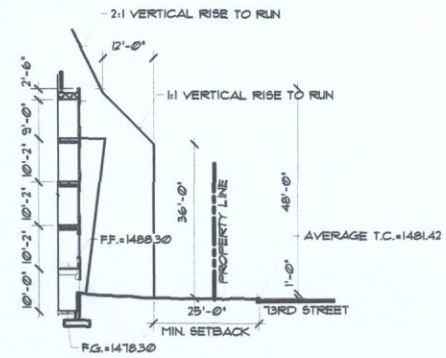
STUCCO FINISH OVER
MECHANICAL SCREEN (TYP.)

PUBLIC ART
IN METAL FRAME

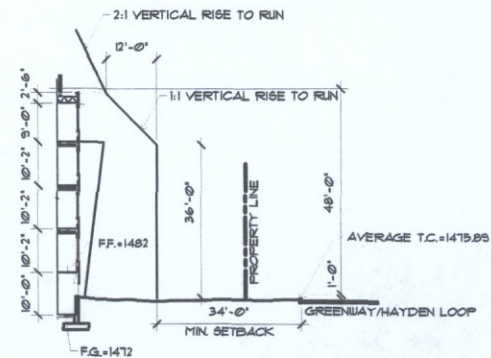
RECESSED METAL WINDOW FRAME (TYP.)

STUCCO FINISH OVER WOOD
FRAME CONSTRUCTION (TYP.)
MANUFACTURED STONE VENEER (TYP.)

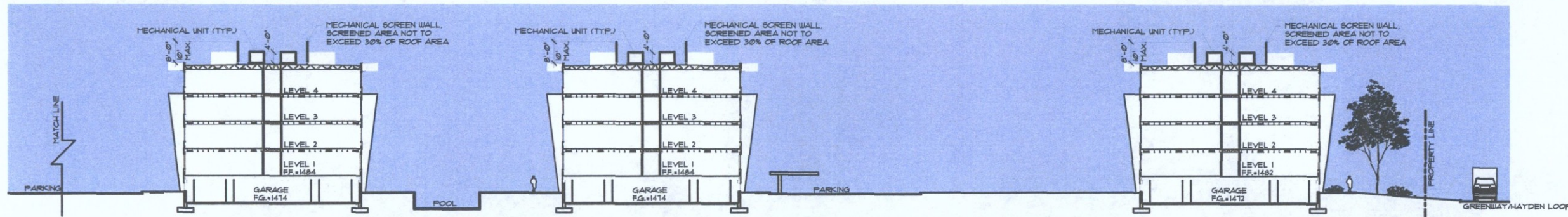
GARAGE FLOOR LEVEL BELOW



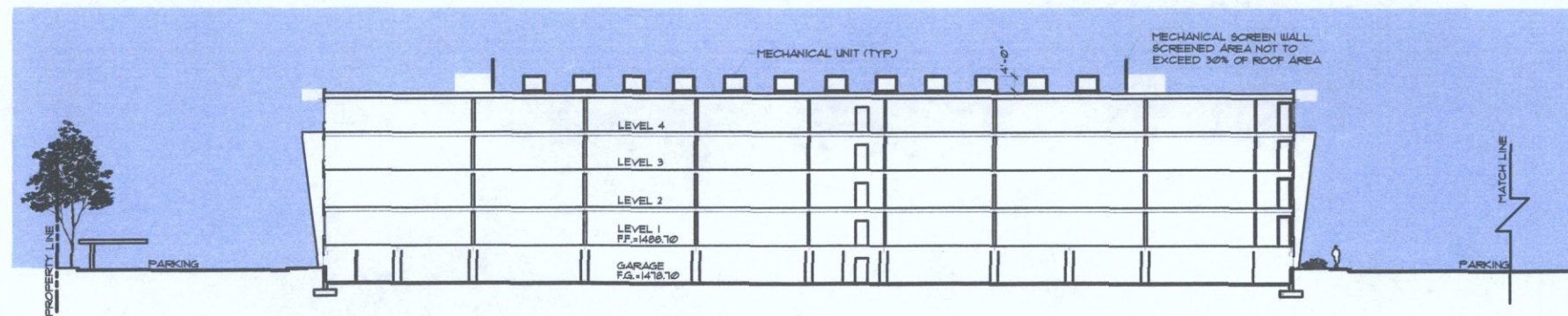
TYP. WALL SECTION @ 73RD STREET
SCALE: 1"=30'0"



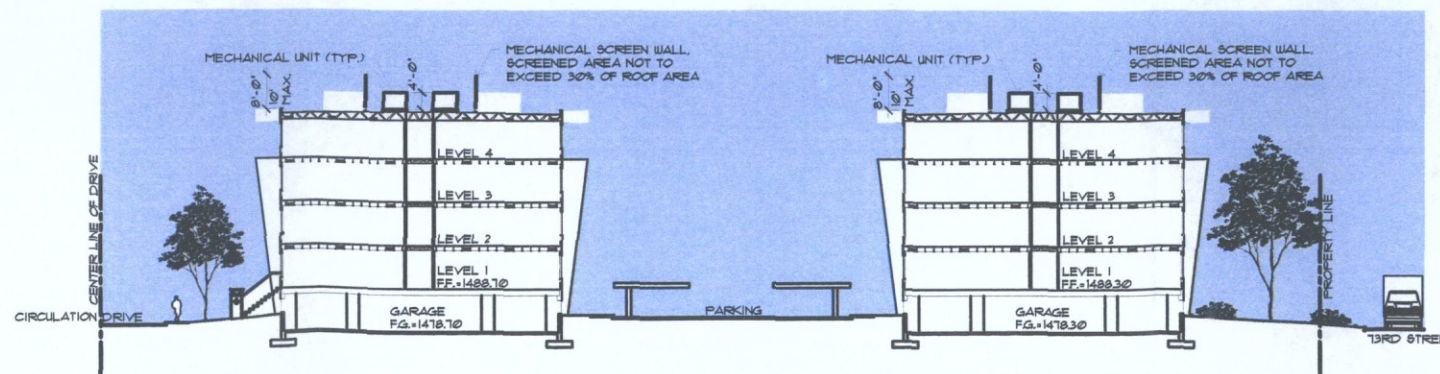
TYP. WALL SECTION @ GREENWAY/HAYDEN LOOP
SCALE: 1"=30'0"



SITE CROSS SECTION A
SCALE: 1"=30'0"



SITE CROSS SECTION A
SCALE: 1"=30'0"



SITE CROSS SECTION B
SCALE: 1"=30'0"

The Residences at Zocallo Plaza
Finished Floor Elevations
8/12/2011

hilgartwilson
ENGINEERS • PLANNERS • SURVEYORS

Building #	Low TC	High TC	Average TC	Max FF	Max FG	Proposed FF	Proposed FG
1	1474.98	1476.80	1475.89	1482.89	1472.89	1482.00	1472.00
2	1477.40	1478.40	1477.90	1484.90	1474.90	1484.00	1474.00
3	1480.51	1484.00	1482.26	1489.26	1479.26	1488.70	1478.70
4	1480.40	1482.43	1481.42	1488.42	1478.42	1488.30	1478.30

TC: Top of Curb
FF: Finished Floor Elevation
FG: Finished Garage Elevation

Contractor must verify all dimensions at project before proceeding with the work. Do not reproduce these drawings & specifications without the expressed written permission of the Architect. The drawings & specifications are the property of the Architect and shall remain the property of the Architect. No part of these drawings & specifications shall be used by anyone other than the contractor for the project for which they are made in whole or in part without the expressed written permission of the Architect.

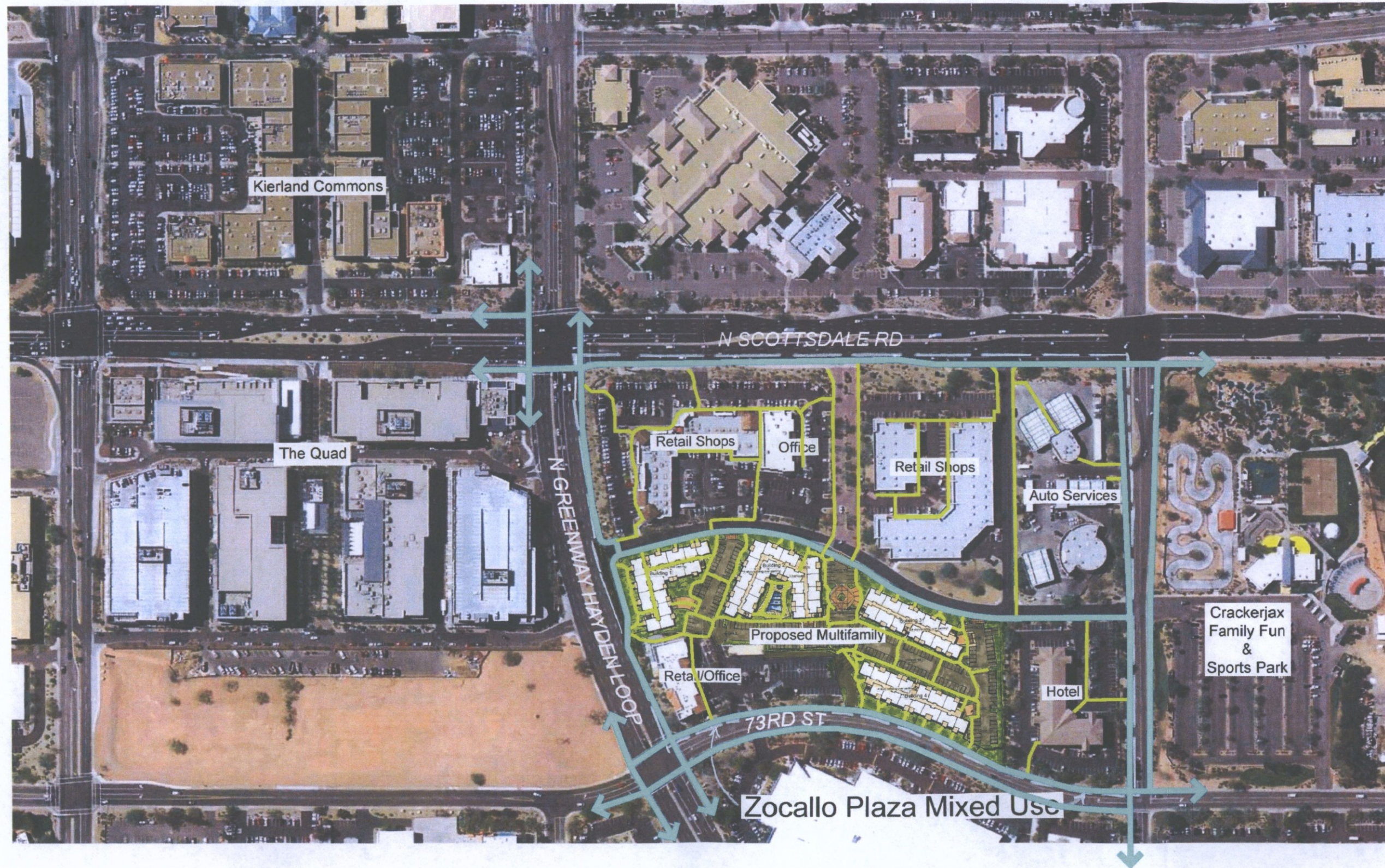
Copyright © L.R. Niemiec Architects Inc. 2011 All Rights Reserved

Site Sections
Scale: 1" = 20'-0"
The Residences At Zocallo Plaza
15440 N. Greenway-Hayden Loop
Scottsdale, AZ. 85260

DATE OF PROJECT
NO.
SHEET NO.

AS3

L.R. Niemiec Architects
L.R. NIEMIEC ARCHITECTS/PLANNERS, INC. • 8585 EAST HARTFORD DRIVE, SUITE 155 • SCOTTSDALE ARIZONA 85255 • (480) 998-7576



THE RESIDENCES AT ZOCALLO PLAZA SCOTTSDALE ARIZONA

PEDESTRIAN CIRCULATION PLAN



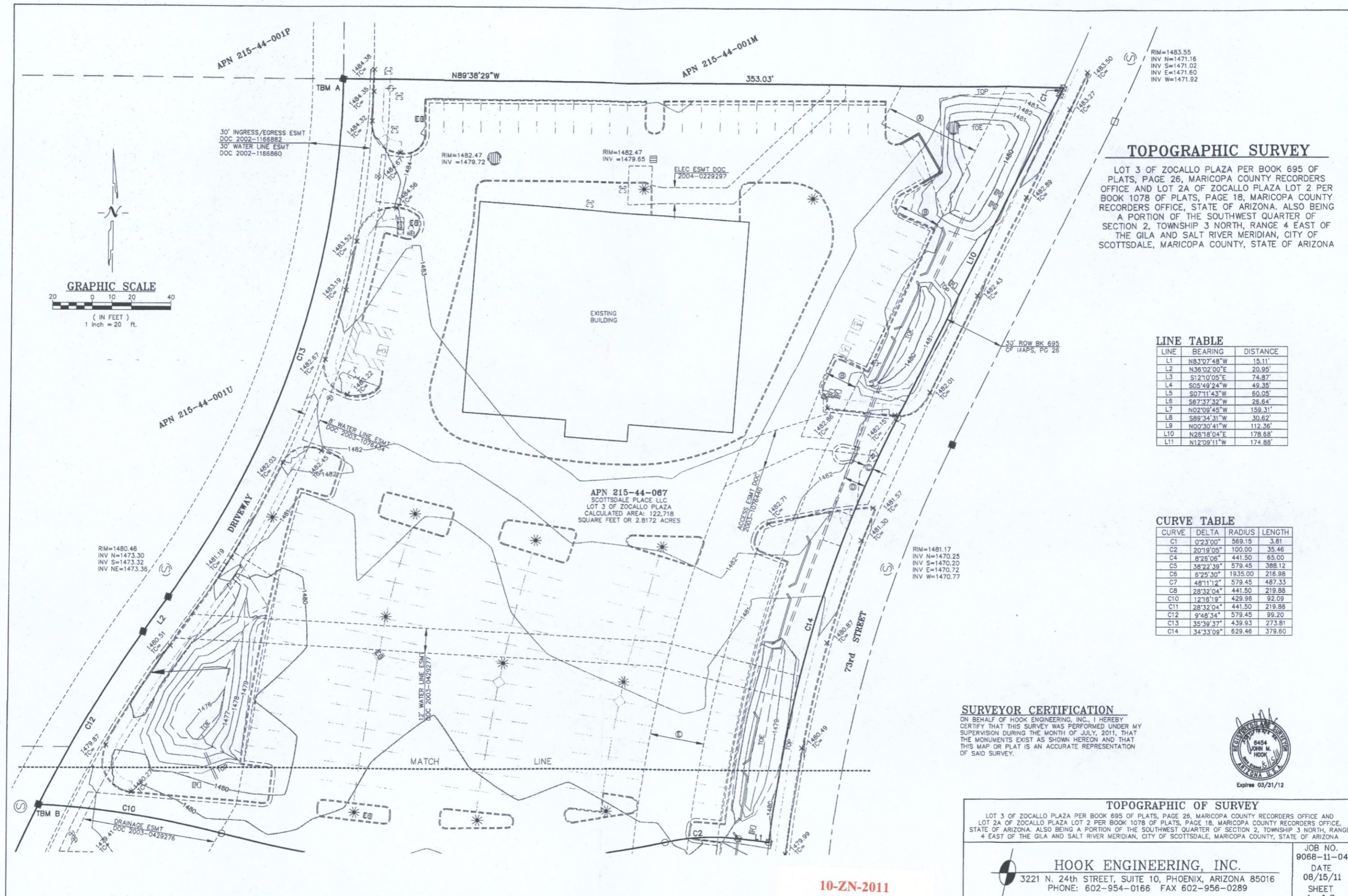
DATE: 8-11-11

L.R. Niemiec Architects, Inc.



8585 E. Hartford Drive, Suite 115 Scottsdale, AZ 85255 (480)998-7576

GILMORE PARSONS
 LAND DESIGN GROUP
 2211 N. 76th Street, Phoenix, AZ 85028
 T 602.366.9623 F 602.366.9797
 www.gil.com



TOPOGRAPHIC SURVEY

LOT 3 OF ZOCALLO PLAZA PER BOOK 695 OF PLATS, PAGE 26, MARICOPA COUNTY RECORDERS OFFICE AND LOT 2A OF ZOCALLO PLAZA LOT 2 PER BOOK 1078 OF PLATS, PAGE 18, MARICOPA COUNTY RECORDERS OFFICE, STATE OF ARIZONA. ALSO BEING A PORTION OF THE SOUTHWEST QUARTER OF SECTION 2, TOWNSHIP 3 NORTH, RANGE 4 EAST OF THE GILA AND SALT RIVER MERIDIAN, CITY OF SCOTTSDALE, MARICOPA COUNTY, STATE OF ARIZONA

LINE TABLE

LINE	BEARING	DISTANCE
L1	N83°07'48"W	15.11'
L2	N36°02'00"E	20.95'
L3	S12°10'05"E	74.87'
L4	S05°49'24"W	49.35'
L5	S07°11'43"W	60.05'
L6	S67°37'32"W	26.64'
L7	N02°09'45"W	159.31'
L8	S89°34'31"W	30.62'
L9	N00°30'41"W	112.36'
L10	N26°18'04"E	178.68'
L11	N12°09'11"W	174.88'

CURVE TABLE

CURVE	DELTA	RADIUS	LENGTH
C1	0°23'00"	569.15	3.81
C2	20°19'05"	100.00	35.46
C4	8°26'06"	441.50	65.00
C5	38°22'39"	579.45	388.12
C6	6°25'30"	1935.00	216.98
C7	48°11'12"	579.45	487.33
C8	28°32'04"	441.50	219.88
C10	12°16'19"	429.96	92.09
C11	28°32'04"	441.50	219.88
C12	9°48'34"	579.45	99.20
C13	35°39'17"	439.93	273.81
C14	34°33'09"	629.46	379.60

SURVEYOR CERTIFICATION

ON BEHALF OF HOOK ENGINEERING, INC., I HEREBY CERTIFY THAT THIS SURVEY WAS PERFORMED UNDER MY SUPERVISION DURING THE MONTH OF JULY, 2011, THAT THE MONUMENTS EXIST AS SHOWN HEREON AND THAT THIS MAP OR PLAT IS AN ACCURATE REPRESENTATION OF SAID SURVEY.



TOPOGRAPHIC OF SURVEY

LOT 3 OF ZOCALLO PLAZA PER BOOK 695 OF PLATS, PAGE 26, MARICOPA COUNTY RECORDERS OFFICE AND LOT 2A OF ZOCALLO PLAZA LOT 2 PER BOOK 1078 OF PLATS, PAGE 18, MARICOPA COUNTY RECORDERS OFFICE, STATE OF ARIZONA. ALSO BEING A PORTION OF THE SOUTHWEST QUARTER OF SECTION 2, TOWNSHIP 3 NORTH, RANGE 4 EAST OF THE GILA AND SALT RIVER MERIDIAN, CITY OF SCOTTSDALE, MARICOPA COUNTY, STATE OF ARIZONA

HOOK ENGINEERING, INC.
 3221 N. 24th STREET, SUITE 10, PHOENIX, ARIZONA 85016
 PHONE: 602-954-0166 FAX 602-956-0289

JOB NO. 9068-11-04
 DATE 08/16/11
 SHEET 1 of 3

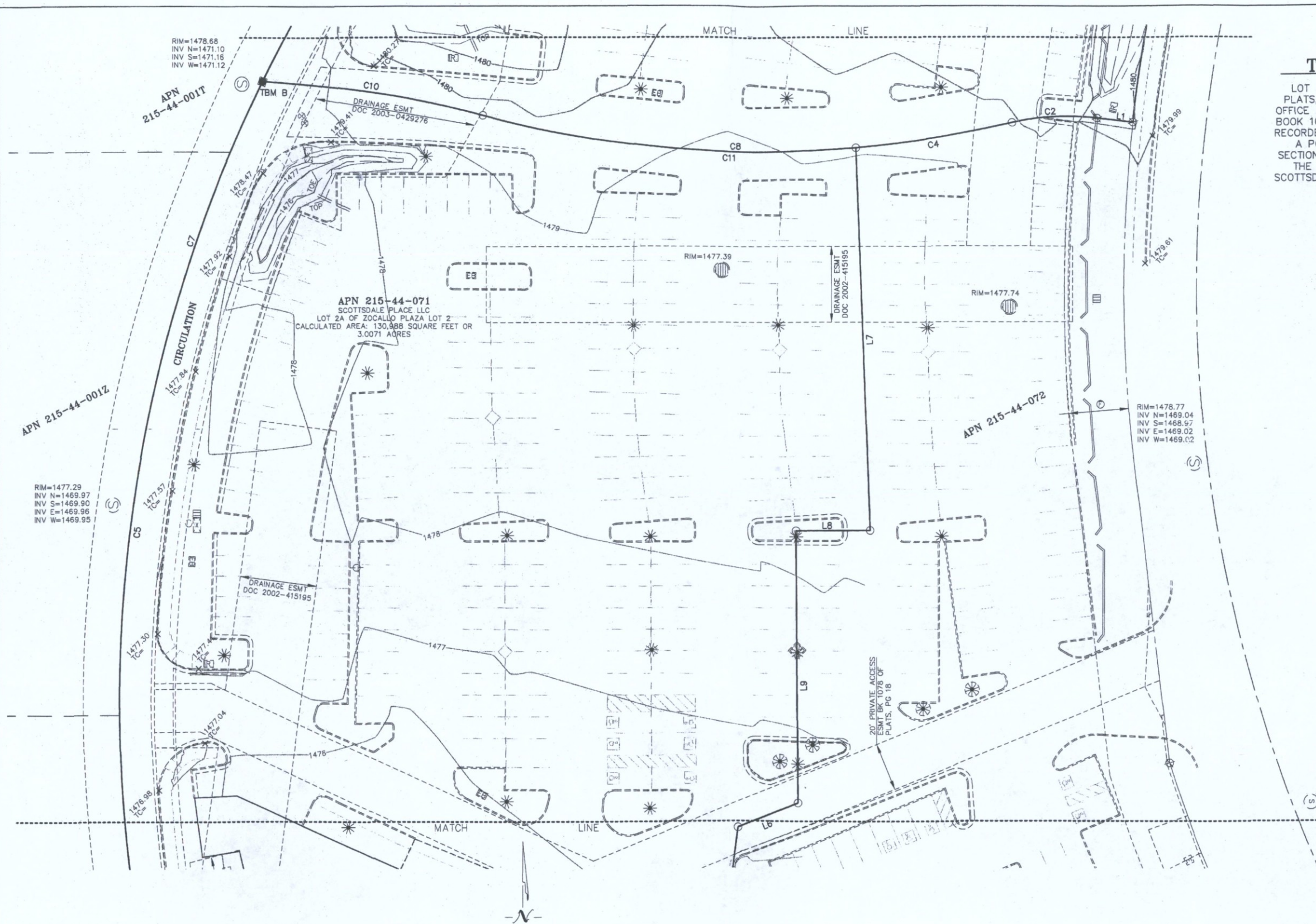
10-ZN-2011
 1st: 8/17/2011

TOPOGRAPHIC SURVEY

LOT 3 OF ZOCALLO PLAZA PER BOOK 695 OF PLATS, PAGE 26, MARICOPA COUNTY RECORDERS OFFICE AND LOT 2A OF ZOCALLO PLAZA LOT 2 PER BOOK 1078 OF PLATS, PAGE 18, MARICOPA COUNTY RECORDERS OFFICE, STATE OF ARIZONA. ALSO BEING A PORTION OF THE SOUTHWEST QUARTER OF SECTION 2, TOWNSHIP 3 NORTH, RANGE 4 EAST OF THE GILA AND SALT RIVER MERIDIAN, CITY OF SCOTTSDALE, MARICOPA COUNTY, STATE OF ARIZONA

LEGEND

- FOUND SURVEY MONUMENT AS NOTED
- FOUND BRASSCAP FLUSH W/PVMT
- FOUND PK NAIL W/TAG. #6454
- ⊗ FOUND 1/2" REBAR W/CAP #6454
- CALCULATED
- ROW RIGHT OF WAY
- MCRO MARICOPA COUNTY RECORDERS OFFICE
- APN ASSESSORS PARCEL NUMBER
- BK. BOOK
- ESMT EASEMENT
- VNAE VEHICULAR NON-ACCESS EASEMENT
- FD FOUND
- PVMT PAVEMENT
- PG. PAGE
- ELEC ELECTRIC
- ⊠ WATER METER
- WB WATER BLOW OFF
- ⊕ WATER FIRE CONNECTION
- ⊗ WATER VALVE
- ⊠ ELEC CABINET
- ⊠ ELEC PULL BOX
- ⊗ PARKING LIGHT
- ⊠ UTILITY POLE
- ⊠ IRRIGATION BOX
- ⊗ GREASE TRAP
- ⊠ SANITARY SEWER MANHOLE
- ⊠ STORM DRAIN MANHOLE
- ⊠ TELEPHONE CABINET
- TC= TOP OF CURB ELEVATION
- ⊠ DRAINAGE AND FLOOD CONTROL ESMT PER DOC 2003-0429980
- ⊠ DRAINAGE AND FLOOD CONTROL ESMT PER DOC 2003-1076435 PUBLIC
- ⊠ ACCESS ESMT PER DOC 2003-1076433
- ⊠ SIGHT DISTANCE ESMT PER DOC 2003-1076432
- ⊠ ACCESS ESMT PER DOC 2003-0429263
- ⊠ 25' SLOPE ESMT PER DOC 1985-166842
- ⊠ SIGHT DISTANCE ESMT PER DOC 2001-1082139
- ⊠ DRAINAGE & FLOOD CONTROL ESMT PER DOC 2001-0352122
- ⊠ ELEC ESMT PER DOC 2001-801474

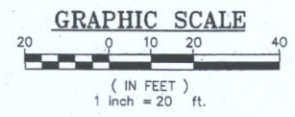


RIM=1477.29
INV N=1469.97
INV S=1469.90
INV E=1469.96
INV W=1469.95


RIM=1478.68
INV N=1471.10
INV S=1471.15
INV W=1471.12

RIM=1478.77
INV N=1469.04
INV S=1468.97
INV E=1469.02
INV W=1469.02

RIM=1477.29
INV N=1470.54
INV S=1470.45
INV E=1471.11
INV W=1470.94



10-ZN-2011
1st: 8/17/2011

TOPOGRAPHIC OF SURVEY	
LOT 3 OF ZOCALLO PLAZA PER BOOK 695 OF PLATS, PAGE 26, MARICOPA COUNTY RECORDERS OFFICE AND LOT 2A OF ZOCALLO PLAZA LOT 2 PER BOOK 1078 OF PLATS, PAGE 18, MARICOPA COUNTY RECORDERS OFFICE, STATE OF ARIZONA. ALSO BEING A PORTION OF THE SOUTHWEST QUARTER OF SECTION 2, TOWNSHIP 3 NORTH, RANGE 4 EAST OF THE GILA AND SALT RIVER MERIDIAN, CITY OF SCOTTSDALE, MARICOPA COUNTY, STATE OF ARIZONA	
	HOOK ENGINEERING, INC. 3221 N. 24th STREET, SUITE 10, PHOENIX, ARIZONA 85016 PHONE: 602-954-0166 FAX 602-956-0289
JOB NO. 9068-11-04 DATE 08/15/11 SHEET 2 of 3	

TOPOGRAPHIC SURVEY

LOT 3 OF ZOCALLO PLAZA PER BOOK 695 OF PLATS, PAGE 26, MARICOPA COUNTY RECORDERS OFFICE AND LOT 2A OF ZOCALLO PLAZA LOT 2 PER BOOK 1078 OF PLATS, PAGE 18, MARICOPA COUNTY RECORDERS OFFICE, STATE OF ARIZONA. ALSO BEING A PORTION OF THE SOUTHWEST QUARTER OF SECTION 2, TOWNSHIP 3 NORTH, RANGE 4 EAST OF THE GILA AND SALT RIVER MERIDIAN, CITY OF SCOTTSDALE, MARICOPA COUNTY, STATE OF ARIZONA

RIM=1477.29
INV N=1470.54
INV S=1470.45
INV E=1471.11
INV W=1470.94

RIM=1476.49
INV N=1458.17
INV S=1457.84
INV E=1457.88
INV W=1457.72

RIM=1476.35
INV N=1468.44
INV S=1468.53
INV E=1468.53
INV W=1468.51

RIM=1475.63
INV N=1467.25
INV SE=1467.16

RIM=1475.15
INV NW=1464.65
INV S=1463.78
INV NE=1464.50

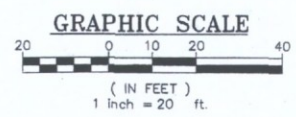
BENCHMARK
BRASSCAP IN A HANDHOLE AT THE WEST 1/4 CORNER, SEC. 2, T.3 N., R.4 E.
NAVD 88 ELEVATION - 1497.36

NOTES


1. ALL DIMENSIONS SHOWN HEREON ARE MEASURED. FOR RECORD INFORMATION SEE BOOK 259 OF PLATS, PAGE 38, MARICOPA COUNTY RECORDERS OFFICE. BOOK 695 OF PLATS, PAGE 26, MARICOPA COUNTY RECORDERS OFFICE. BOOK 1078 OF PLATS, PAGE 18, MARICOPA COUNTY RECORDERS OFFICE.

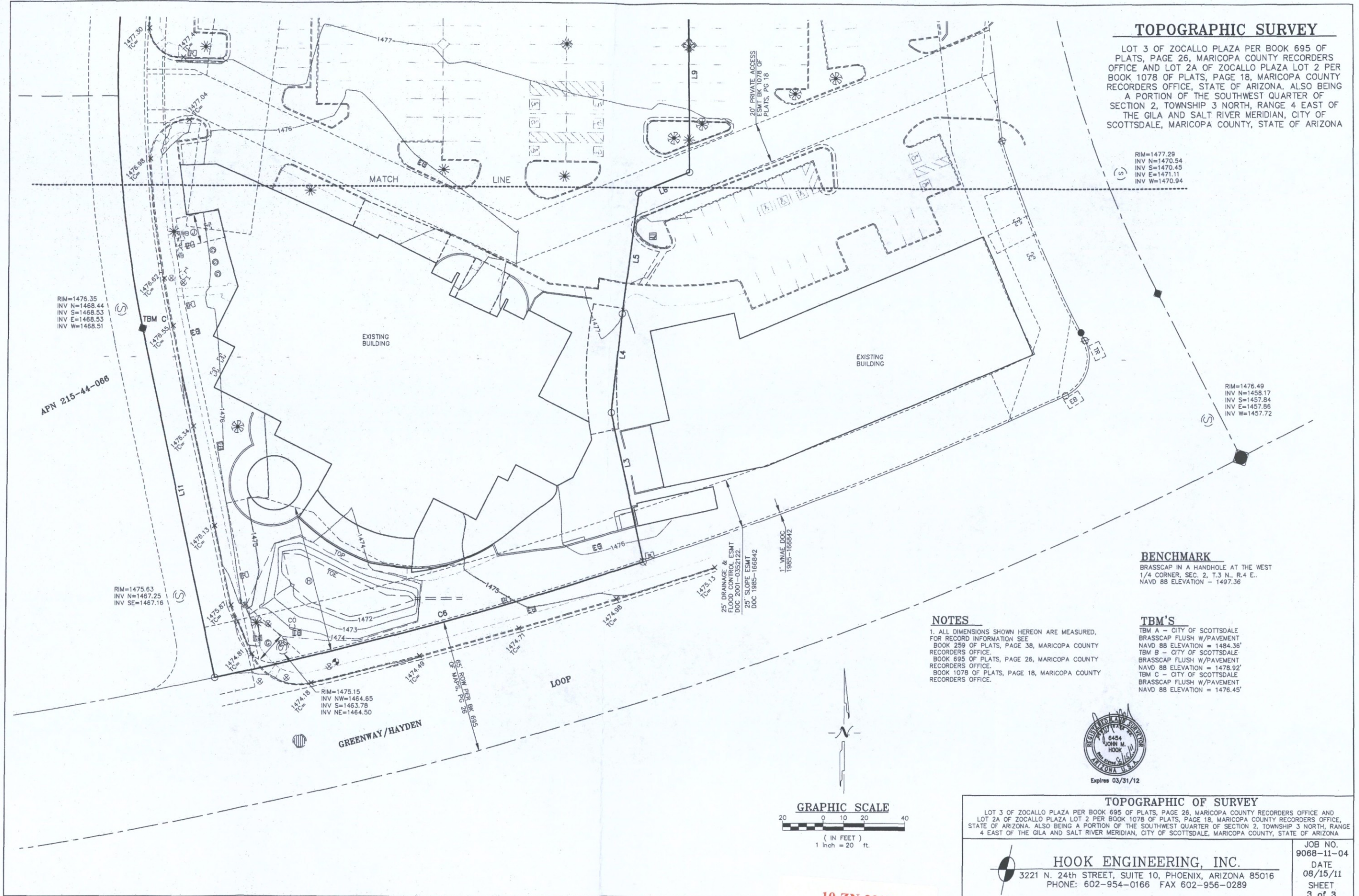
TBM'S

TBM A - CITY OF SCOTTSDALE BRASSCAP FLUSH W/PAVEMENT NAVD 88 ELEVATION = 1484.36'
TBM B - CITY OF SCOTTSDALE BRASSCAP FLUSH W/PAVEMENT NAVD 88 ELEVATION = 1478.92'
TBM C - CITY OF SCOTTSDALE BRASSCAP FLUSH W/PAVEMENT NAVD 88 ELEVATION = 1476.45'



10-ZN-2011
1st: 8/17/2011

TOPOGRAPHIC OF SURVEY	
LOT 3 OF ZOCALLO PLAZA PER BOOK 695 OF PLATS, PAGE 26, MARICOPA COUNTY RECORDERS OFFICE AND LOT 2A OF ZOCALLO PLAZA LOT 2 PER BOOK 1078 OF PLATS, PAGE 18, MARICOPA COUNTY RECORDERS OFFICE, STATE OF ARIZONA. ALSO BEING A PORTION OF THE SOUTHWEST QUARTER OF SECTION 2, TOWNSHIP 3 NORTH, RANGE 4 EAST OF THE GILA AND SALT RIVER MERIDIAN, CITY OF SCOTTSDALE, MARICOPA COUNTY, STATE OF ARIZONA	
 HOOK ENGINEERING, INC. 3221 N. 24th STREET, SUITE 10, PHOENIX, ARIZONA 85016 PHONE: 602-954-0166 FAX 602-956-0289	JOB NO. 9088-11-04 DATE 08/15/11 SHEET 3 of 3





Extended Stay America – North of Site

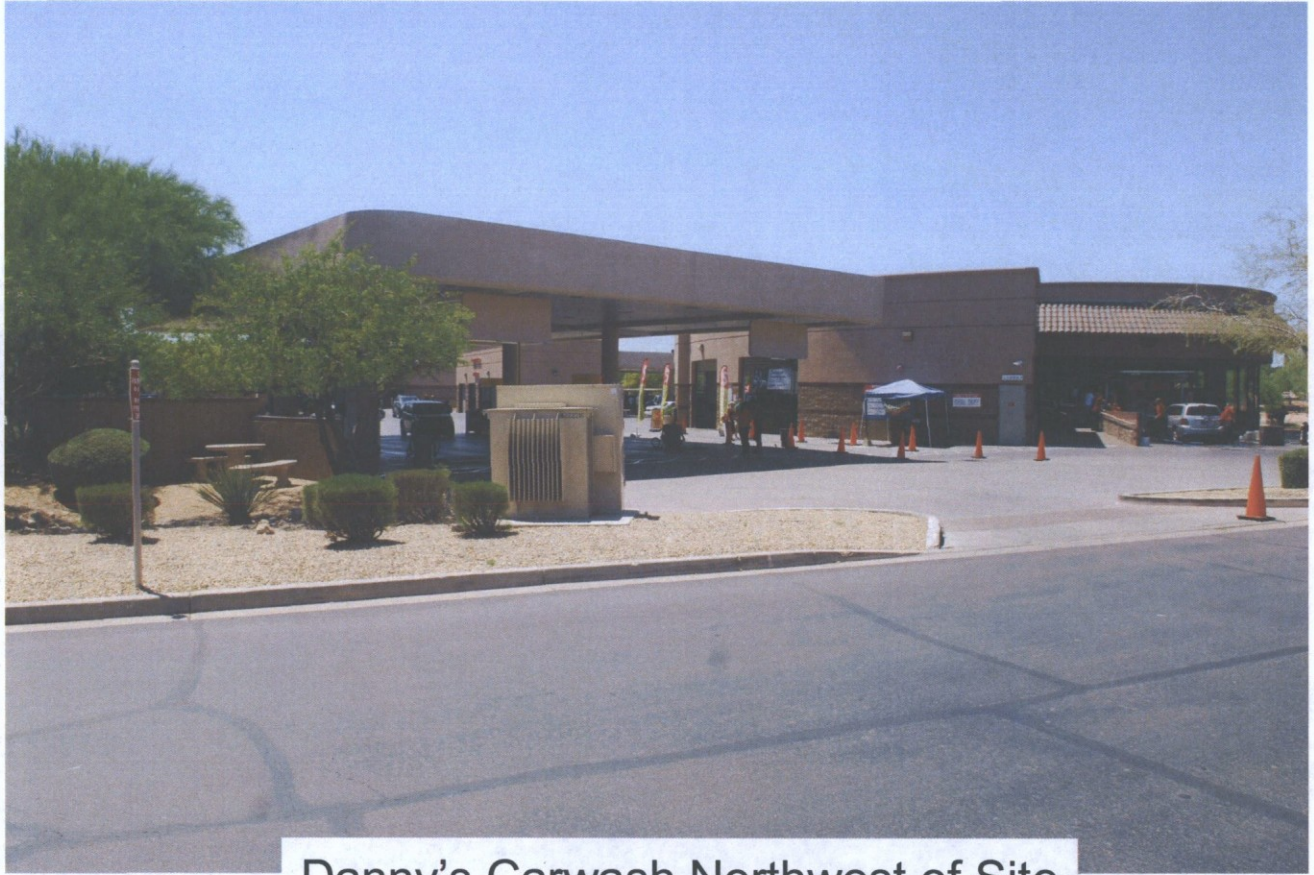


10-ZN-2011
1st: 8/17/2011



Extended Stay America – North of Site





Danny's Carwash Northwest of Site



I.C.E. Building (formerly Dial Corp.) – East of Site



I.C.E. Building (formerly Dial Corp.) – East of Site





DFC Office Building – On Site





Site Parking Lot



Barcelona Restaurant – On Site



Barcelona Restaurant – On Site



BBC Office/Retail – Directly Adj. to Site

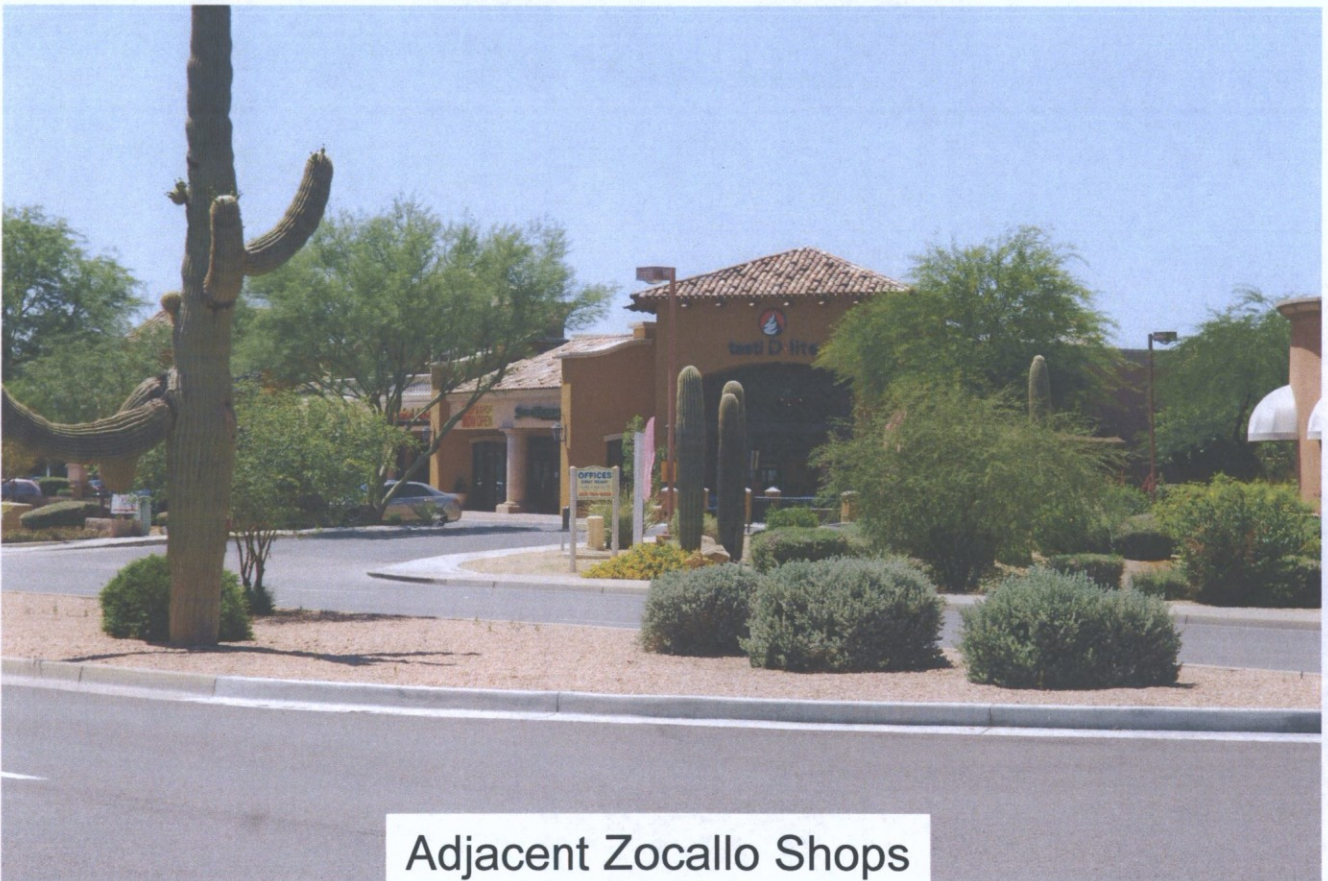


Site Parking Lot





BBC Office/Retail – Adj. to Site



Adjacent Zocallo Shops



Scottsdale Quarter – South of Site





Scottsdale Airport



Former Barcelona + Site

Scottsdale Quarter

Kierland

Greenway Hayden Loop

Scottsdale Rd

73rd St

Westin Golf Resort

CrackerJax

Promenade

Frank Lloyd Wright Blvd

10-ZN-2011
1st: 8/17/2011



Tierra Buena

Danny's Family
Car Wash

Extended Stay
America Motel

Zocallo
Furniture
Plaza

DFC
Offices

Zocallo
Furniture
Plaza

I.C.E.

Scottsdale Rd

Fidelity
Brokerage

Former
Barcelona
+ Site

Zocallo
Shops I

Barcelona

2 Story

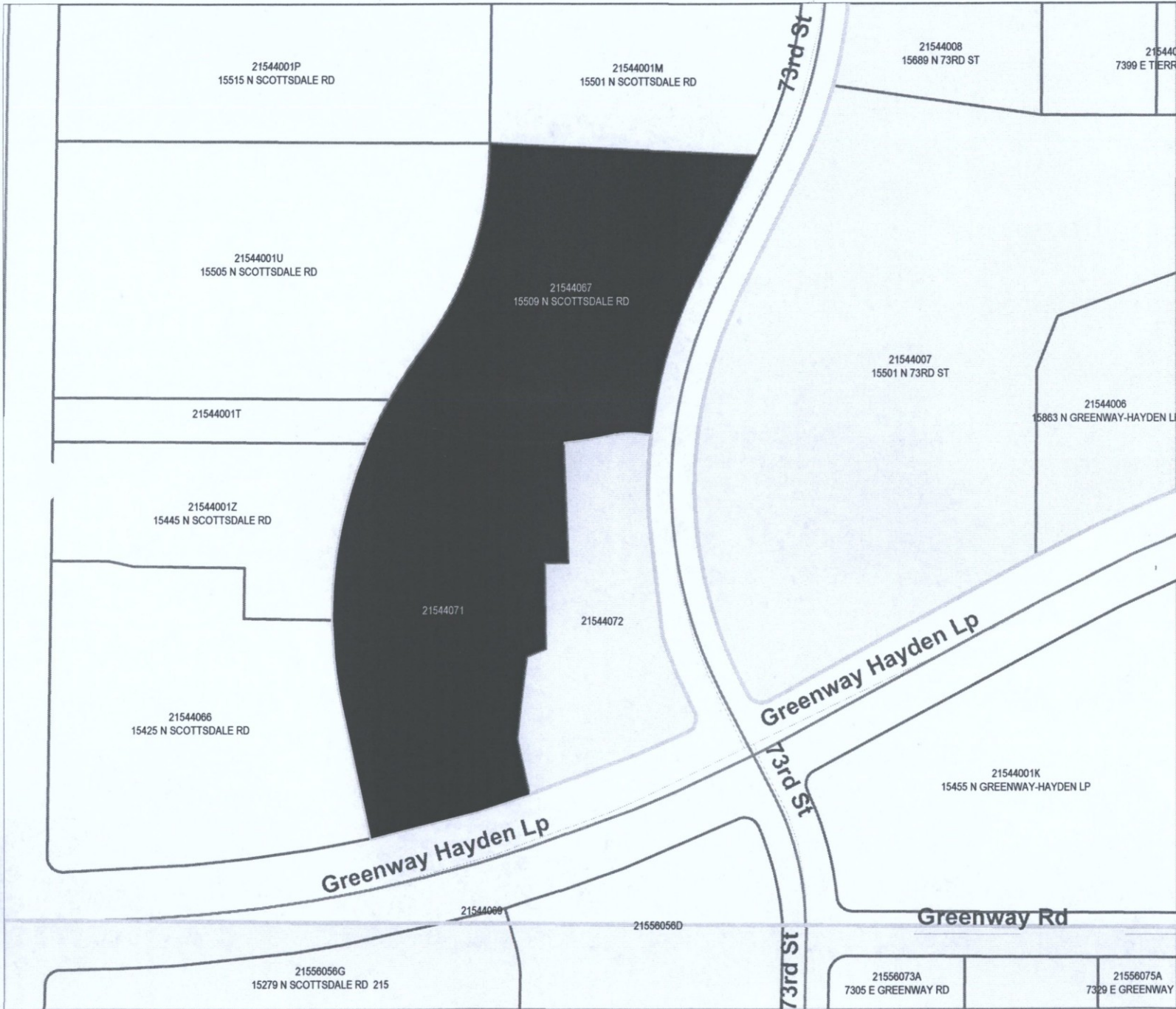
Zocallo
Shops II

Greenway Hayden Loop

Scottsdale
Quarter



County Parcels



10-ZN-2011
1st: 8/17/2011