



138-SA-2016

Development Review (Minor) Staff Approval

Replace Existing Pole Top
Lighting On Street Side Of North
Corp Yard

APPLICATION INFORMATION

LOCATION: 9191 E San Salvador Dr	APPLICANT: Jim Marino
PARCEL: 217-36-019X	COMPANY: City of Scottsdale
Q.S.: 27-50	ADDRESS: 9191 E San Salvador Dr Scottsdale, AZ 85258
CODE VIOLATION #:	PHONE: 480-734-0171
Request: Retrofit lighting for north corp yard	

STIPULATIONS

1. The exterior light layout and design shall comply with the plans submitted by City of Scottsdale Public Works and dated 4/19/16 by City Planning Staff.
2. The exterior light fixtures shall comply with plans submitted by City of Scottsdale Public Works and dated 4/19/16 by City Planning Staff.
3. All exterior light fixtures and poles shall be black, dark bronzes or rusted steel.
4. All fixture temperatures shall be equal or less than 3000 Kelvin.

CONSTRUCTION DOCUMENT PLAN REVIEW SUBMITTAL REQUIREMENTS

Submit one copy of this approval letter, and a completed Owner/Builder form if applicable, and a permit application along with the following plan set(s) to the One-Stop-Shop for review:

PERMIT APPLICATION: ☒ **Completed Permit Application.** The permit application may be obtained or completed online at the following weblink:

http://www.scottsdaleaz.gov/Assets/Public+Website/bldgresources/APP_Permit_Commercial.pdf

(Please complete the permit application online prior to arriving at the City to submit your construction documents)

ARCHITECTURAL: ☒ 4 sets of architectural/electrical plans and 1 additional site plan and elevation.

Expiration of Development Review (Minor) Approval

This approval expires two (2) years from date of approval if a permit has not been issued, or if no permit is required, work for which approval has been granted has not been completed.

Staff Signature:

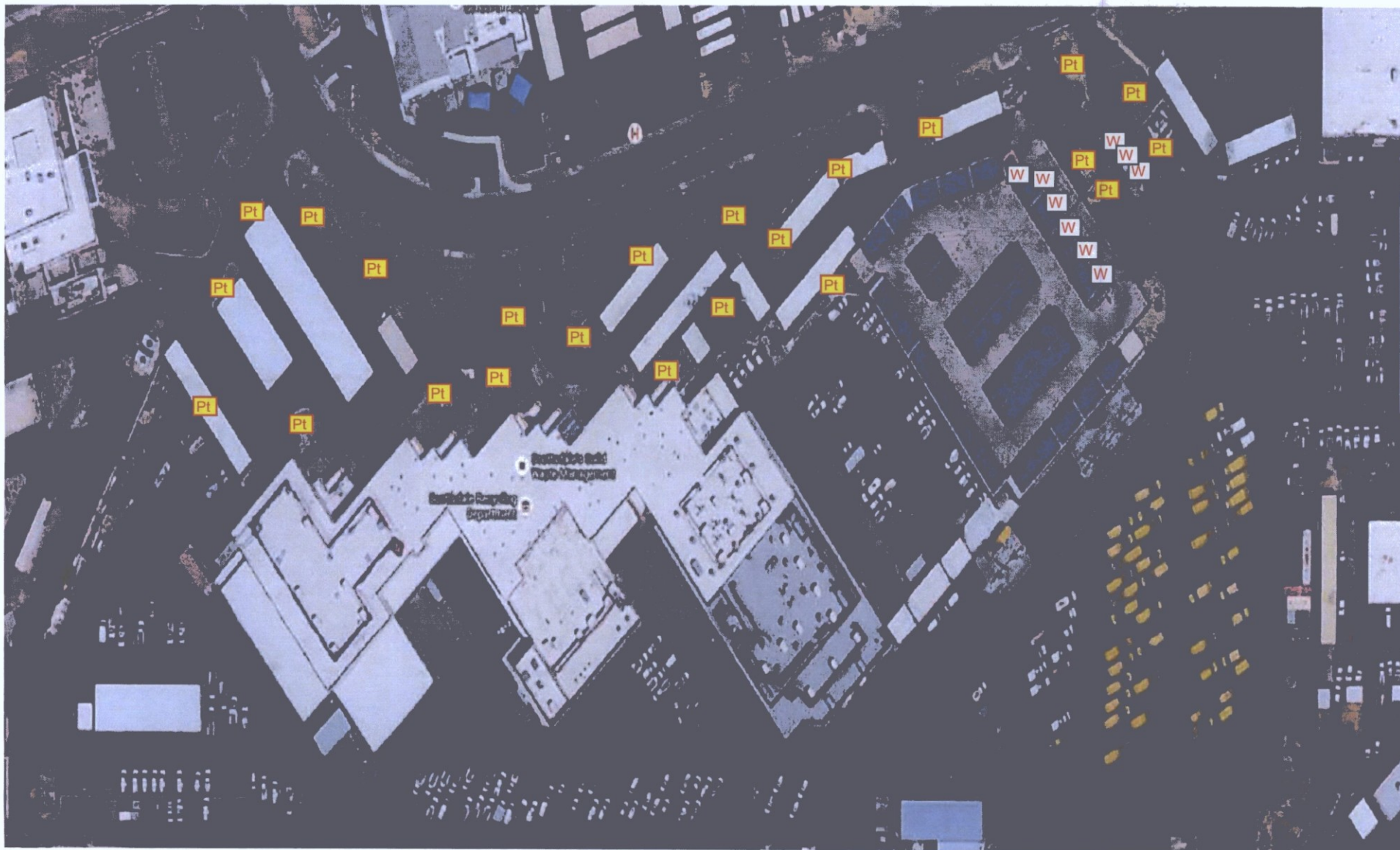
Ben Moriarity

DATE:

4/19/16

Planning and Development Services

7447 East Indian School Road, Suite 105, Scottsdale, Arizona 85251 Phone: 480-312-7000 Fax: 480-312-7088
City of Scottsdale's Website: www.scottsdaleaz.gov



COS North Corp Yard – 9191 E San Salvador Drive, Scottsdale, AZ 85258

Pt Front Quote
Post Top HPS

W Wall Pack HPS

STIPULATION SET
RETAIN FOR RECORDS
APPROVED

4/19/16
DATE

Ban
INITIALS

SLIM12Y

New Wall packs

RAB
LIGHTING

STIPULATION SET
RETAIN FOR RECORDS
APPROVED



4/19/16
DATE

Project:

Type:

Prepared By:
INITIALS

Date:

Driver Info

Type: Constant Current
120V: 0.12A
208V: 0.08A
240V: 0.07A
277V: 0.06A
Input Watts: 14W
Efficiency: 87%

LED Info

Watts: 12W
Color Temp: 3000K (Warm)
Color Accuracy: 83 CRI
L70 Lifespan: 100000
Lumens: 1,242
Efficacy: 90 LPW

12, 18 and 26 Watt SLIM wallpacks are ultra efficient and deliver impressive light distribution with a compact low-profile design that's super easy to install as a downlight or uplight.

Color: Bronze

Weight: 4.5 lbs

Technical Specifications

Listings

UL Listing:

Suitable for wet locations. Suitable for mounting within 1.2m (4ft) of the ground.

ADA Compliant:

SLIM™ is ADA Compliant.

Dark Sky Approved:

The International Dark Sky Association has approved this product as a full cutoff, fully shielded luminaire.

IESNA LM-79 & LM-80 Testing:

RAB LED luminaires have been tested by an independent laboratory in accordance with IESNA LM-79 and LM-80, and have received the Department of Energy "Lighting Facts" label.

DLC Listed:

This product is on the Design Lights Consortium (DLC) Qualified Products List and is eligible for rebates from DLC Member Utilities.
DLC Product Code: P0000171L

Construction

IP Rating:

Ingress Protection rating of IP66 for dust and water.

Cold Weather Starting:

The minimum starting temperature is -40°F/-40°C.

Ambient Temperature:

Suitable for use in 40°C (104°F) ambient temperatures.

Thermal Management:

Superior heat sinking with internal Air-Flow fins.

Housing:

Precision die-cast aluminum housing.

Mounting:

Heavy-duty mounting bracket with hinged housing for easy installation.

Recommended Mounting Height:

Up to 8 ft.

Lens:

Tempered glass lens.

Reflector:

Specular thermoplastic.

Gaskets:

High-temperature silicone.

Finish:

Our environmentally friendly polyester powder coatings are formulated for high-durability and long-lasting color, and contains no VOC or toxic heavy metals.

Green Technology:

Mercury and UV free, and RoHS compliant.

LED Characteristics

LED:

Multi-chip, long-life LED.

Lifespan:

100,000-hour LED lifespan based on IES LM-80 results and TM-21 calculations.

Color Consistency:

3-step MacAdam Ellipse binning to achieve consistent fixture-to-fixture color.

Color Stability:

LED color temperature is warrantied to shift no more than 200K in CCT over a 5 year period.

Color Uniformity:

RAB's range of CCT (Correlated Color Temperature) follows the guidelines for the American National Standard for Specifications for the Chromaticity of Solid State Lighting (SSL) Products, ANSI C78.377-2011.

Electrical

Driver:

Constant Current, Class 2, 100-277V, 50/60 Hz., 4KV surge protection, 350mA, 100-240VAC 0.3-0.15 Amps, 277VAC 0.15Amps, Power Factor 99%.

THD:

9.9% at 120V

Other

HID Replacement Range:

The SLIM12 can be used to replace 70W MH based on delivered lumens.

California Title 24:

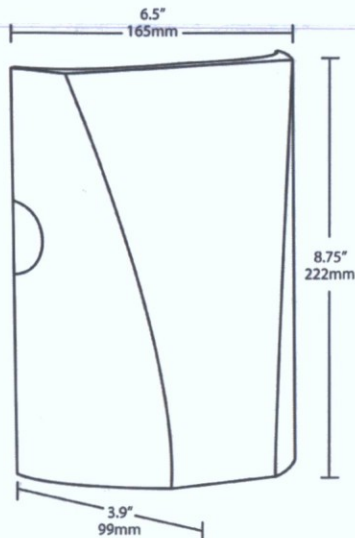
SLIM12 complies with 2013 California Title 24 building and electrical codes as a residential outdoor fixture. See SLIM12/PC for a model that complies as a commercial outdoor non-pole-mounted fixture ≤ 30 Watts.

Technical Specifications (continued)
Other
Patents:

The design of the SLIM™ is protected by patents in U.S. Pat D681,864, and pending patents in Canada, China, Taiwan and Mexico.

Optical
BUG Rating:

B1 U0 G0

Dimensions

Features

- Full cutoff, fully shielded LED wallpack
- Can be used as a downlight or uplight
- Contractor friendly features for easy installation
- 100,000-hour LED Life
- 5-Year Warranty

Ordering Matrix

Family	Watts	Color Temp	Finish	Photocell	Dimming
SLIM	26 = 26W 18 = 18W 12 = 12W	= 5000K (Cool) Y = 3000K (Warm) N = 4000K (Neutral)	= Bronze W = White	= No Photocell /PC = 120V Button /PC2 = 277V Button	= No Dimming /D10 = Dimmable

STIPULATION SET
RETAIN FOR RECORDS
APPROVED

4/19/16
DATE

Bm
INITIALS

New Post Tops

Premier II LED

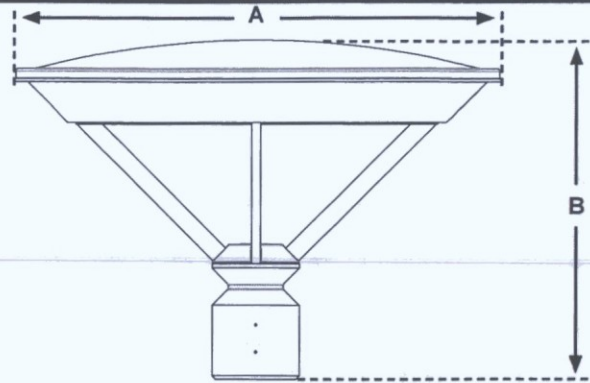
Project Name:

Catalog Number:

Type



Dimensional Drawings



Fixture	A	B	Max. LEDs	Lbs
PRE-2-L	27"	19"	96	56

Contemporary design meets the new generation of LED green technology in this stunning luminaire, the **Premier II**.

The **Premier II** series provides up to fifty percent energy savings over traditional HID light sources; and offers excellent beam control and LED life beyond 100,000 hours for 350 milliamp systems. The **Premier II** is offered in six optical distributions.

The **Premier II**'s fully-sealed housing features an exceptionally well-designed thermal management system that provides superior heat dissipation.

The **Premier II** fixture is built with a cast aluminum housing, extruded aluminum arms and a spun aluminum, removable top.

The **Premier II** series LED post top is IES full cutoff and Dark-Sky friendly. The **Premier II** is especially suited for any project where full control of light distribution is needed.

The popular **Premier II** is the perfect compliment to any university campus, business park, or walkway project where contemporary, architectural design is desired.

Model	Optics	Source	Milliamps	Kelvin	Voltage	Mounting	Finish	Options
PRE-2-L	Type I (T1)	# of LEDs 32 (32LC)	mA 350 (3)	4000K *Neutral white (4K)	120-277 *Universal voltage (UNV)	Post Top *Slips over 4" ØD tenon x 4" tall (PT)	Bronze (BZ)	Button Type Photocell *Specify voltage (PC120) (PC208) (PC240) (PC277)
	Type II (T2)	48 (48LC)	530 (5)	5000K *Cool white (5K)	480 (5)		Smooth Black (SBK)	0-10v Dimming Driver No Controls (DIM)
	Type III (T3)	64 (64LC)		Custom ordered 3000K	347 (8)		Smooth White (SWH)	Motion Sensor/Control Watt Stopper FSP-211 22' Distance @ 8' CLG HT Must specify Dimming Driver. (WSC)
	Type IV (T4)	80 (80LC)					Forest Green (FG)	Motion Sensor 20' Distance @ 8' CLG HT Must specify Dimming Driver. Can use with Wireless Control (MS)
	Type V (T5)	96 (96LC)					Silver Metallic (SL)	Wireless Control (WC) Consult Factory
	Type V-W (T5W)						Graphite (GP)	10 KV Surge Protector (10KV)
							Weathered Brown (WB)	
							Soft Gold (SG)	
							Custom Color (CC)	

STIPULATION SET
RETAIN FOR RECORDS
APPROVED

4/19/16
DATE

Bm
INITIALS

ARCHITECTURAL

For more detailed information on mounting, wiring or installation instructions, please consult factory. If poles are not ordered with fixtures, please specify mounting requirements. This document contains proprietary information of Visionaire Lighting, LLC. Any use of this information requires the written approval of Visionaire Lighting, LLC. In keeping with our TQM policy of continuous improvement, Visionaire reserves the right to change any specifications contained herein without prior notice.

Premier LED**Housing**

- The Premier II's housing is constructed from durable, corrosion-resistant, cast aluminum.
- The spun aluminum top cap is .080 gauge, and easily removable for service.
- Silicone gasketing is provided for complete weather and insect protection.

Thermal Management

- The Premier II provides excellent overall thermal management by maximizing the efficiency of the heat sink in the fixture. This enables the Premier II to withstand higher ambient temperatures and higher drive currents without degrading LED life.

Optical System

- The highest lumen output **Evo/C LEDr** are utilized. High-performance acrylic optics feature industry leading Type I, II, III, IV, V and V-W optical distributions. Non-fading acrylic optics are impact-resistant and rated to 94 percent translucence.
- L_{70} life of our LEDs is rated over 150,000 hours (for 350 mA), based on second party, usable life calculations.
- The optical system qualifies as IES full cutoff, and is Dark-Sky certified to restrict light trespass, glare and light pollution for neighborhood-friendly lighting.
- CRI values are 70 for 4000K and 75 for 5000K.

Quali-Guard® Finish

- Fixture components are chemically pretreated through a multiple-stage washer, and finished with an electrostatically-applied, thermoset polyester powder coat textured paint with a 3 to 5 mils thickness. Finish is oven-baked at 400 °F for maximum adherence and finish hardness.
- Available in standard and custom colors.
- Finish is guaranteed for five (5) years.

Post Top Mount

- The Premier II's contractor-friendly mounting hardware slips over 4" O.D. x 4" tall tenon utilizing stainless steel hardware.
- Round Internal Tenon Adaptors (RITA) are recommended for a smooth-looking connection. Standard for 4" and 5" poles, custom size required for 3" poles.

Electrical Assembly

- The Premier II is supplied with a high-performance driver available in 350 and 530 mA. The driver is integrally-located in the housing, and is operational from 120 V through 480 V, 50 Hz to 60 Hz input. Power factor is 90%.
- Rated for -40° F operation.
- 3 kV surge protector supplied as standard.

Warranty

- Five (5) year Limited Warranty on entire system, including finish. For full warranty information, please visit VisionaireLighting.com.

Solar Panel Option

- The Premier II is compatible for use with Visionaire Lighting's Solar Panel Pole™.

Options

- Button type photocell
- 0-10v Dimming Driver
- WattStopper FSP-211
- Motion Sensor
- Wireless Control
- 10 KV Surge Protector

Please consult factory for detailed custom options.

Listings

- Premier II is ETL listed, suitable for wet locations.
- IP65 Rated.
- LM79 and LM80.
- Powder Coated Tough™

**STIPULATION SET
RETAIN FOR RECORDS
APPROVED**

4/19/16
DATE

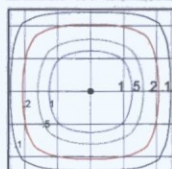
INITIALS



**IP65
RATED**

**lighting
facts**

**DESIGNLIGHTS
CONSORTIUM**

Alternate View**Isolux Curve**

PREMIER II-1
TYPE V
LED OPTICS
48 LEDs @ 530 mA
Scale: 1 Square = 18 ft.
Initial Light Loss Factor = 1.00
Mounting Height = 18 ft.
Arrangement: Single

EPA Data

Fixture Only

PRE-2-L

1.2

LED LUMEN DATA CHART FOR 5500K*

# LED's	Output mA	Type 1	Type 2	Type 3	Type 4	Type 5	Type5-W	System Watts	L70 Hours
32	350	3141	2734	3438	2964	3787	3943	38	150,000
	530	4580	3206	4389	4249	5050	5127	51	100,000
48	350	4642	3877	4937	4574	5323	5519	56	150,000
	530	6785	4853	6584	6358	7541	7237	75	100,000
64	350	6120	5084	6458	6107	6960	7022	72	150,000
	530	9011	5611	8779	8469	10166	9352	102	100,000
80	350	7680	5714	8006	7656	8536	8637	89	150,000
	530	11270	6952	10980	10579	12645	11462	127	100,000
96	350	9176	7326	9572	9246	10079	10126	103	150,000
	530	13524	8130	13181	12688	15174	14572	144	100,000

Visit www.VisionaireLighting.com for up-to-the-minute chart information, including types not listed here.

*For 4000k multiply values by 0.90

19645 Rancho Way Rancho Dominguez, CA 90220
Tel: (310) 512-6480 Fax: (310) 512-6486
www.visionairelighting.com



LED UNIVERSAL LIGHT



Features & Benefits:

- High Efficiency Samsung LED
- 360 Degree Beam Angle
- IP64 Rated For Outdoor Use
- 50,000+ Hour Life
- 100% Recyclable
- Best In Class Thermal Management
- Easy Installation Process
- > 85 CRI

Applications:

- Outdoor Area Lighting
- Bollard
- Post Top
- Wall Pack
- Security Lighting
- Globe
- Acorn
- Lantern



360° Beam Angle



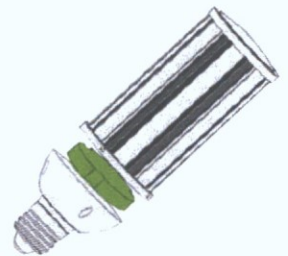
Flame Resistant
Material



-30~+65°C
Operating Temperature



IP64
WaterProof



Internal Driver



Due to advancements in technology, specifications are subject to change without notice.

All images are copyright Truly Green Solutions, Inc. and may be only be used with permission.

WARNING: READ INSTRUCTIONS BEFORE INSTALLING

Disconnect all power sources to the fixtures before installing.

www.trulygreensolutions.com | info@trulygreensolutions.com P: 818.206.4404 | F: 866.577.5302

Changing the World, One Bulb at a Time

Wall Pack LED Kit



LED UNIVERSAL LIGHT

STIPULATION SET
RETAIN FOR RECORDS
APPROVED

DATE

INITIALS



27W



36W

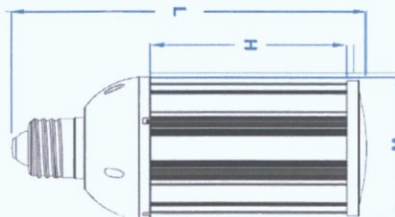


45W



54W

Product Model	31081	31082	31083	31084
Comparable To CFL	100W	150W	170W	200W
Technical Parameters	27W	36W	45W	54W
Input Voltage	AC 100~277V	AC 100~277V	AC 100~277V	AC 100~277V
Power Frequency	50~60Hz	50~60Hz	50~60Hz	50~60Hz
Total Power Consumption	27W	36W	45W	54W
LED Power Consumption	27W	36W	45W	54W
LED Chip	90pcs	117pcs	144pcs	180pcs
Power Factor	≥0.95	≥0.95	≥0.95	≥0.95
Luminous Flux(IES)	2900 lm	3800 lm	4700 lm	5600 lm
CRI	>85	>85	>85	>85
Colour Temperature	3000~5300K	3000~5300K	3000~5300K	3000~5300K
Beam Angle	360°	360°	360°	360°
IP Rating	IP64	IP64	IP64	IP64
Operating Temperature	-30°C~65°C(-22 to 149°F)	-30°C~65°C(-22 to 149°F)	-30°C~65°C(-22 to 149°F)	-30°C~65°C(-22 to 149°F)
Lumen Maintenance	50,000Hrs	50,000Hrs	50,000Hrs	50,000Hrs
Light Fixture Material	Aluminum Base	Aluminum Base	Aluminum Base	Aluminum Base
Dimensions(L×W×H)	204x90x92.8mm [E27] 214x90x92.8mm [E40]	234x120x92.8mm [E27] 244x120x92.8mm [E40]	264x151x92.8mm [E27] 274x151x92.8mm [E40]	264x151x92.8mm [E27] 274x151x92.8mm [E40]
Sockets Base	E26 / E27 / E39 / E40 8.04 x 3.54 x 3.65 8.42 x 3.54 x 3.65	E26 / E27 / E39 / E40 9.21 x 4.74 x 3.65 9.61 x 4.74 x 3.65	E39 / E40 10.04 x 5.95 x 3.65 10.79 x 5.95 x 3.65	E39 / E40 10.04 x 5.95 x 3.65 10.79 x 5.95 x 3.65



Due to advancements in technology, specifications are subject to change without notice.

All images are copyright Truly Green Solutions, Inc. and may be only be used with permission.

WARNING: READ INSTRUCTIONS BEFORE INSTALLING

Disconnect all power sources to the fixtures before installing.

www.trulygreensolutions.com | info@trulygreensolutions.com P: 818.206.4404 | F: 866.577.5302



Cost Effective

The best choice in reducing the effects of surging power costs across over world.
Saves up to 74% of power compared to Compact Fluorescent Light / HID.

Power Consumption	Lumens	Comparable CFL / HID	Energy Saving
27W	2900 lm	100W	73%
36W	3800 lm	150W	76%
45W	4700 lm	170W	74%
54W	5600 lm	200W	73%

LED

LED Universal Light Replaces CFL / HID

CFL / HID



UNIVERSAL LIGHT
27W

CFL / HID
100W



UNIVERSAL LIGHT
36W

CFL / HID
150W



UNIVERSAL LIGHT
45W

CFL / HID
170W



UNIVERSAL LIGHT
54W

CFL / HID
200W



Due to advancements in technology, specifications are subject to change without notice.

All images are copyright Truly Green Solutions, Inc. and may be only be used with permission.

WARNING READ INSTRUCTIONS BEFORE INSTALLING

Disconnect all power sources to the fixtures before installing.

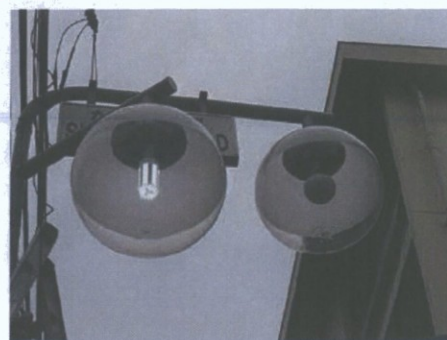
www.trulygreensolutions.com | info@trulygreensolutions.com P: 818.206.4404 | F: 866.577.5302



STIPULATION SET
RETAIN FOR RECORDS
APPROVED

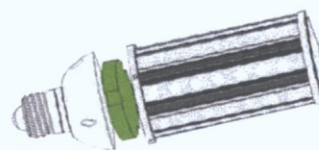
4/19/16
DATE

Bu
INITIALS



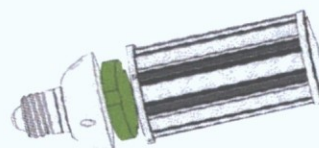
Ordering Information - LED UNIVERSAL LIGHT 27W

- 310811 LED Universal Light 27W Day White
- 310812 LED Universal Light 27W Natural White
- 310813 LED Universal Light 27W Warm White



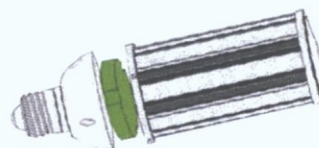
Ordering Information - LED UNIVERSAL LIGHT 36W

- 310821 LED Universal Light 36W Day White
- 310822 LED Universal Light 36W Natural White
- 310823 LED Universal Light 36W Warm Whiter



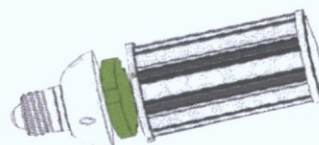
Ordering Information - LED UNIVERSAL LIGHT 45W

- 310831 LED Universal Light 45W Day White
- 310832 LED Universal Light 45W Natural White
- 310833 LED Universal Light 45W Warm Whiter



Ordering Information - LED UNIVERSAL LIGHT 54W

- 310841 LED Universal Light 54W Day White
- 310842 LED Universal Light 54W Natural White
- 310843 LED Universal Light 54W Warm Whiter



Due to advancements in technology, specifications are subject to change without notice.

All images are copyright Truly Green Solutions, Inc. and may be only be used with permission.

WARNING: READ INSTRUCTIONS BEFORE INSTALLING

Disconnect all power sources to the fixtures before installing.

www.trulygreensolutions.com | info@trulygreensolutions.com P: 818.206.4404 | F: 866.577.5302



Pre-Application Request

Purpose:

The purpose of the Pre-Application submittal, and meeting, is for the applicant and City Staff to discuss a proposed Development Application, and the information and process that is necessary for City Staff to process the proposal.

In accordance with the Zoning Ordinance, no development application shall be accepted before a Pre-Application has been submitted, and a Pre-Application meeting has been conducted with City Staff, unless the Pre-Application meeting has been waived by the Zoning Administrator.

Submittal:

The completed Pre-Application request form, all required materials and fees should be submitted in person to the One-Stop-Shop located at 7447 East Indian School Road; or, may they be submitted digitally at following website:

<https://eservices.scottsdaleaz.gov/eServices/PreApps/Default.aspx>

All checks shall be payable to "City of Scottsdale."

Scheduling

After the Pre-Application packet has been accepted at the One-Stop-Shop, a staff member will contact the Applicant within five (5) Staff Working Days to schedule a Pre-Application meeting with the assigned staff member(s). Generally, a Pre-Application meeting is scheduled within five (5) to fifteen (15) Staff Working Days from the date of the submittal.

Project Name: Replace existing pole top lighting on the street side at North Corp Yard	
Property's Address: 9191 E. San Salvador Dr., Scottsdale, AZ 85258	APN: 217-36-019AX
Property's Zoning District Designation:	
Property Details:	
<input type="checkbox"/> Single-Family Residential <input type="checkbox"/> Multi-Family Residential <input type="checkbox"/> Commercial <input type="checkbox"/> Industrial <input checked="" type="checkbox"/> Other	
Has a 'Notice of Compliance' been issued? <input type="checkbox"/> Yes <input checked="" type="checkbox"/> No If yes, provide a copy with this submittal	
Owner: City of Scottsdale	Applicant: Jim Marino
Company: N/A	Company: City of Scottsdale
Address: 9191 E. San Salvador Dr., Scottsdale	Address: 9191 E. San Salvador Dr., Scottsdale
Phone:	Phone: 480.734.0171
Fax:	Fax:
E-mail:	E-mail: jmarino@scottsdaleaz.gov
Owner Signature	Applicant Signature 
Official Use Only	Submittal Date: _____ Application No.: 293 -PA- 2016
Project Coordinator: _____	

Planning and Development Services Department

7447 E Indian School Road Suite 105, Scottsdale, Arizona 85251 Phone: 480-312-7000 Fax: 480-312-7088



Pre-Application Request

Development Application Type:

Please check the appropriate box of the Type(s) of Application(s) you are requesting

Zoning	Development Review	Signs
<input type="checkbox"/> Text Amendment (TA)	<input type="checkbox"/> Development Review (Major) (DR)	<input type="checkbox"/> Master Sign Program (MS)
<input type="checkbox"/> Rezoning (ZN)	<input checked="" type="checkbox"/> Development Review (Minor) (SA)	<input type="checkbox"/> Community Sign District (MS)
<input type="checkbox"/> In-fill Incentive (II)	<input type="checkbox"/> Wash Modification (WM)	Other
<input type="checkbox"/> Conditional Use Permit (UP)	<input type="checkbox"/> Historic Property (HP)	<input type="checkbox"/> Annexation/De-annexation (AN)
Exemptions to the Zoning Ordinance	Land Divisions	<input type="checkbox"/> General Plan Amendment (GP)
<input type="checkbox"/> Hardship Exemption (HE)	<input type="checkbox"/> Subdivisions (PP)	<input type="checkbox"/> In-Lieu Parking (IP)
<input type="checkbox"/> Special Exception (SX)	<input type="checkbox"/> Subdivision (Minor) (MD)	<input type="checkbox"/> Abandonment (AB)
<input type="checkbox"/> Variance (BA)	<input type="checkbox"/> Perimeter Exceptions (PE)	<input type="checkbox"/> Single-Family Residential
<input type="checkbox"/> Minor Amendment (MA)		<input type="checkbox"/> Other

Submittal Requirements: (fees subject to change every July)

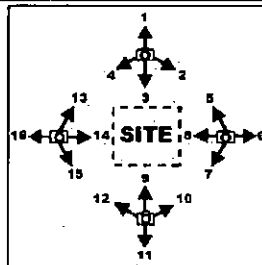
☒ Pre-Application Fee: \$ _____
(No fees are charged for Historic Preservation (HP) properties.)

☒ Records Packet Fee: \$ _____
Processed by staff. The applicant need not visit the Records desk to obtain the packet.
(Only required for ZN, II, UP, DR, PP, AB applications, or otherwise required by Staff)

☒ Application Narrative:
The narrative shall describe the purpose of the request, and all pertinent information related to the request, such as, but not limited to, site circulation, parking and design, drainage, architecture, proposed land use, and lot design.

☐ Property Owner Authorization Letter
(Required for the SA and MS Pre-Applications)

- ☐ Site / Context Photographs
- Provide color photographs showing the site and the surrounding properties. Use the guidelines below for photos.
 - Photos shall be taken looking in towards the project site and adjacent to the site.
 - Photos should show adjacent improvements and existing on-site conditions.
 - Each photograph shall include a number and direction.
 - Sites greater than 500 ft. in length, also take the photo locations shown in the dashed lines.
 - Photos shall be provided 8 1/2 x 11 paper, max. two per page.



☐ Other

- The following list of Additional Submittal Information is not required for a Pre-Application meeting, unless indicated below by staff prior to the submittal of this request.
- Applicants are advised to provide any additional information listed below. This will assist staff to provide the applicant with direction regarding an application.

Additional Submittal Information

- ☐ Site Plan
- ☐ Subdivision plan
- ☐ Floor Plans
- ☐ Elevations
- ☐ Landscape plans
- ☐ H.O.A. Approval letter
- ☐ Sign Criteria Regulations & Language
- ☐ Material Samples – color chips, awning fabric, etc.
- ☐ Cross Sections – for all cuts and fills
- ☐ Conceptual Grading & Drainage Plan
- ☐ Exterior Lighting – provide cut sheets, details and photometrics for any proposed exterior lighting.
- ☐ Boundary Survey (required for minor land divisions)
- ☐ Areal of property that includes property lines and highlighted area abandonment request.
- ☐ One copy of the recorded document for the area that is requested to be abandoned. Such as: subdivision plat, map of dedication, GLO (General Land Office) federal patent roadway easement, or separate dedication document. A copy of most recorded documents to be abandoned may be purchased at the City of Scottsdale Records Dept. (480-312-2356), or the Maricopa County Recorder's Office (602-506-3535). A copy of the General Land Office (GLO) federal patent roadway easement may be purchased from the Bureau of Land Management (602-417-9200).

Planning and Development Services Department

7447 E Indian School Road Suite 105, Scottsdale, Arizona 85251 Phone: 480-312-7000 Fax: 480-312-7088

US Energy

S E R V I C E S , I N C .

April 6, 2016

Richard Marotta
City of Scottsdale
9191 E. San Salvador Dr., CY 208
Scottsdale, AZ 85258

RE: City of Scottsdale – North Corporate Yard Exterior

Dear Rich:

US Energy Services is pleased to present our proposal to perform a lighting retrofit. As we discussed, this is the identified post tops and a few wall packs. See map and room by room for full details

The net cost after rebate is **\$20,333.00**. All cost includes all labor, material, taxes, and equipment needed to complete the installation. This quote as all our work with the City of Scottsdale is per our latest Mohave Contract which is 14F-UESE-0825 (Governed by Mohave Contract 15GV021).

If you have any additional questions, please contact me at (480) 661-1534. We look forward to working with the City as your long-term energy and environmental partner.

Sincerely,
US Energy Services, Inc.

Jeff Sarrett
Jeff Sarrett

Saving Measure	Annual Electricity Savings (kWh)	Peak Demand Savings (kW)	Annual Electricity Savings (\$)	O & M Savings (\$)	Total Annual Savings (\$)	ECM Cost (Labor & Material)	Simple Payback (yrs.)	**Rebate	Net Cost	Simple Payback w/ Rebate (yrs.)
North Corp Yard	28,536	6.52	\$3,424	\$582	\$4,006	\$22,781	5.69	\$2,448	\$20,333	5.08
Project Totals	28,536	6.52	\$3,424	\$582	\$4,006	\$22,781	5.69	\$2,448	\$20,333	5.08

North Corporate Yard

Lighting Scope Summary

Existing Conditions	Retrofit Code	Scope of Work	North Corp Yard
HID wall pack to LED	NL010/wp	New LED wall pack full cut off, 50,000 hour L70 rated life, 10w, 3000K	3
HID Post Top Mnt to LED	NL075/pst	New LED area light post top, 100,000+ hour L70 rated life, 75w, Premier 2, 3000K	23
HID Bldg Mnt to LED	RL050/kit	(1) LED wall pack retrofit kit, 50w, 50,000 hour L70 rate life, 3000K	6
		Retrofit Totals	32