

P:\60272\001\2006\Sheets\60272-16-2001.dwg PLOT: 60-25-16 2:00:01pm of eswood

GENERAL NOTES

1. THE SALVAGING CONTRACTOR SHALL REVIEW THIS PROJECT WITH THE CITY ENGINEER PRIOR TO STARTING WORK.
2. ALL SALVAGING OPERATIONS WORK SHALL CONFORM TO M.A.G. STANDARD SPECIFICATIONS AND DETAILS AND THE CITY OF SCOTTSDALE M.A.G. SUPPLEMENTAL SPECIFICATIONS AND SUPPLEMENTAL STANDARD DETAILS.
3. SHOULD THE SALVAGING CONTRACTOR HAVE ANY QUESTIONS REGARDING THESE PLANS AND SPECIFICATIONS OR SHOULD THERE BE ANY DISCREPANCIES, THE CONTRACTOR SHALL CONTACT THE CITY ENGINEER FOR CLARIFICATION BEFORE PROCEEDING FURTHER WITH ANY OTHER WORK.
4. THE SALVAGING CONTRACTOR SHALL BE RESPONSIBLE FOR BECOMING FAMILIAR WITH THE UNDERGROUND UTILITIES, PIPES AND STRUCTURES. THE CONTRACTOR SHALL TAKE SOLE RESPONSIBILITY FOR ANY COST INCURRED DUE TO DAMAGE OF SAID UTILITIES.
5. THE SALVAGING CONTRACTOR SHALL TAKE ALL NECESSARY PRECAUTIONARY MEASURES TO PROTECT THE PUBLIC AND ADJACENT PROPERTIES FROM DAMAGE THROUGHOUT CONSTRUCTION.
6. THE SALVAGING CONTRACTOR SHALL VERIFY AND ACCEPT ALL SITE CONDITIONS AND ROUGH GRADES PRIOR TO STARTING ANY WORK.
7. THE SALVAGE CONTRACTOR SHALL REFER TO THE SPECIFICATIONS FOR ADDITIONAL REQUIREMENTS NOT SHOWN ON THESE PLANS.

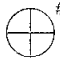

SALVAGE OPERATIONS NOTES

1. THE CONTRACTOR SHALL SUBMIT A SALVAGE OPERATIONS PLAN FOR REVIEW AND APPROVAL BY THE CITY ENGINEER AND LANDSCAPE ARCHITECT PRIOR TO BEGINNING ANY GROUND BREAKING WORK BY THE CONTRACTOR. THE SALVAGE OPERATIONS PLAN SHALL BE CONTAINED IN A THREE RING BINDER(S) AND SHALL BE TYPED ON 8 INCH x 11 INCH SHEETS. THE CONTRACTOR SHALL SUBMIT FOUR (4) COPIES OF THE SALVAGE OPERATIONS PLAN TO THE CITY ENGINEER AT THE PRE-CONSTRUCTION MEETING.
2. THE SALVAGE OPERATIONS PLAN SHALL CONTAIN AS A MINIMUM THE FOLLOWING ITEMS AND THE PLAN SHALL CONFORM TO THE DETAILS SHOWN ON THE PROJECT PLANS.
  - A. THE SALVAGE OPERATIONS PLAN SHALL CLEARLY DEMONSTRATE TO THE CITY HOW THE CONTRACTOR'S SALVAGE OPERATIONS METHODS AND APPROACH WILL BE ACCOMPLISHED FROM MARCH 1 THROUGH SEPTEMBER 30.
  - B. METHODS FOR THE COORDINATING THE SALVAGE AND SALVAGE PLANTING OF ALL LOCAL STOCK WITH ANTICIPATED PHASING AND SEQUENCING OF CONSTRUCTION PER STATIONING LIMITS AND THE DEVELOPMENT OF TEMPORARY NURSERY.
  - C. EXISTING AND FINAL LOCATION OF EACH LOCAL STOCK (IF DIFFERENT THAN SHOWN ON THE PLANS).
  - D. IDENTIFICATION NUMBERS OF EACH LOCAL STOCK ITEM (IF DIFFERENT THAN SHOWN ON THE PLANS).
  - E. SOURCES OF COLLECTED/OPEN STOCK (IF REQUIRED TO SUPPLY REPLACEMENTS OF THE MATERIALS THAT ARE LOST DUE TO EXCESSIVE MORTALITY ON THE PROJECT).
  - F. A SECTION THAT IDENTIFIES ALL PROPOSED NURSERY LOCATIONS. THIS SECTION SHALL INCLUDE A PHOTO INVENTORY OF THE EXISTING CONDITIONS OF THE NURSERY LOCATION AND THE CONTRACTORS PROPOSED RE-ESTABLISHMENT OF THE AREAS DISTURBED AS PART OF THE NURSERY DEVELOPMENT.
  - G. A LIST OF ALL MATERIALS AND EQUIPMENT PROPOSED FOR INCORPORATION INTO THE WORK. THE CONTRACTOR SHALL HAVE MATERIALS AND EQUIPMENT CORRECTLY MARKED ON EACH COPY OF THE LIST. THE LIST SHALL SHOW THE CATALOGUE NUMBERS, MANUFACTURER'S NAMES MODEL NUMBERS, SIZES, CAPACITY, COMPLETE SPECIFICATIONS, INSTRUCTIONS, DESIGN DATA AND/OR DRAWINGS TO DETERMINE WHETHER OR NOT EACH PIECE OF MATERIAL OR EQUIPMENT IS ACCEPTABLE.
3. THE CITY ENGINEER WILL BE THE SOLE JUDGE OF THE ACCEPTABILITY OF THE RECOMMENDATIONS WITHIN THE SALVAGE OPERATIONS PLAN AND WILL NOTIFY THE CONTRACTOR WITHIN 21 DAYS OF THE ACCEPTABILITY OF THE PLAN.
4. THE CITY RESERVES THE RIGHT TO REJECT AT ANY TIME THE CONTRACTORS SALVAGE OPERATIONS PLAN BASED ON THE REVIEW OF THE QUALIFICATIONS STATEMENT AND/OR PERFORMANCE OF THE WORK HEREIN.
5. THE WORK SHALL ALSO INCLUDE:
  - A. THE MACHINERY, EQUIPMENT, LABOR AND MATERIALS REQUIRED TO PROVIDE AND SUPPLY ALL BOXING MATERIALS, IRRIGATION WATER, CONSTRUCT AND MAINTAIN THE NURSERY.
  - B. TRANSPORTING THE LOCAL STOCK TO THE NURSERY.
  - C. DISTRIBUTING WATER TO THE PLANTS FROM THE INITIATION OF THE SALVAGING OPERATIONS AND/OR FROM THE TIME OF PLACEMENT OF THE PLANTS IN THE NURSERY AS APPLICABLE.
  - D. PREPARATION OF PLANTING PITS IN THE NURSERY AND AT THE FINAL PLANTING LOCATION, INCLUDING EXCAVATING AND BACK FILLING.
  - E. THE DOCUMENTATION, MEASUREMENT, AND INSPECTION OF LOCAL STOCK AS IDENTIFIED HEREIN.
  - F. THE PREPARATION, MODIFICATIONS AND REPRODUCTION OF A SALVAGE OPERATIONS PLAN.
  - G. SUPPLY AND INSTALLATION OF ANY REQUIRED CHEMICAL SOLUTIONS, FERTILIZERS AND AMENDMENTS.

NATIVE PLANT INVENTORY

PLANT #	COMMON NAME	CALIPER (in)/ HEIGHT (ft)	STATUS	COMMENTS
1	BARREL	6	S	
2	BARREL	6	S	
3	SAGUARO	11	S	
4	BARREL	6	S	
5	FOOTHILLS PALO VERDE	10	S	
6	FOOTHILLS PALO VERDE	7	NS	BRANCH DIEBACK
7	FOOTHILLS PALO VERDE	20	NS	EXPOSED ROOTS
8	FOOTHILLS PALO VERDE	6	NS	EXPOSED ROOTS
9	FOOTHILLS PALO VERDE	10	NS	EXPOSED ROOTS / ON SLOPE
10	BARREL	5	S	
11	SAGUARO	38	S	6 ARMS
12	FOOTHILLS PALO VERDE	8	NS	ROCK SOIL / LEANING
13	BARREL	4	S	
14	SAGUARO	34	S	7 ARMS
15	BARREL	4	NS	DAMAGED
16	OCOTILLO	7	S	
17	SAGUARO	4	S	
18	BLUE PALO VERDE	8	NS	ROCKY SOIL / LEANING
19	SAGUARO	19	S	4 ARMS
20	BARREL	6	S	
21	MESQUITE	18	NS	EXPOSED ROOTS
22	BLUE PALO VERDE	4	NS	TRUNK FORM / LEANING
23	HYBRID PALO VERDE	4	NS	TRUNK FORM
24	BARREL	6	S	
25	SAGUARO	13	S	
26	SAGUARO	15	S	
27	BLUE PALO VERDE	5	NS	TRUNK FORM / LEANING
28	BARREL	4	S	

NATIVE PLANT STATUS LEGEND	TREE	CACTI
S = SALVAGE	1	16
NS = NON-SALVAGE	10	1
PIP = PROTECT-IN-PLACE	0	0

SYMBOL LEGEND
 # TREE
 # CACTI



J2 Engineering and Environmental Design  
4649 East Cotton Gin Loop, Suite B2  
Phoenix, Arizona 85040  
Phone: 602-438-2221  
www.j2design.us



Native Resources Intl.  
1540 W Happy Valley Rd.  
Phoenix, AZ. 85085  
Phone (623) 869-6757  
Fax (623) 869-6769

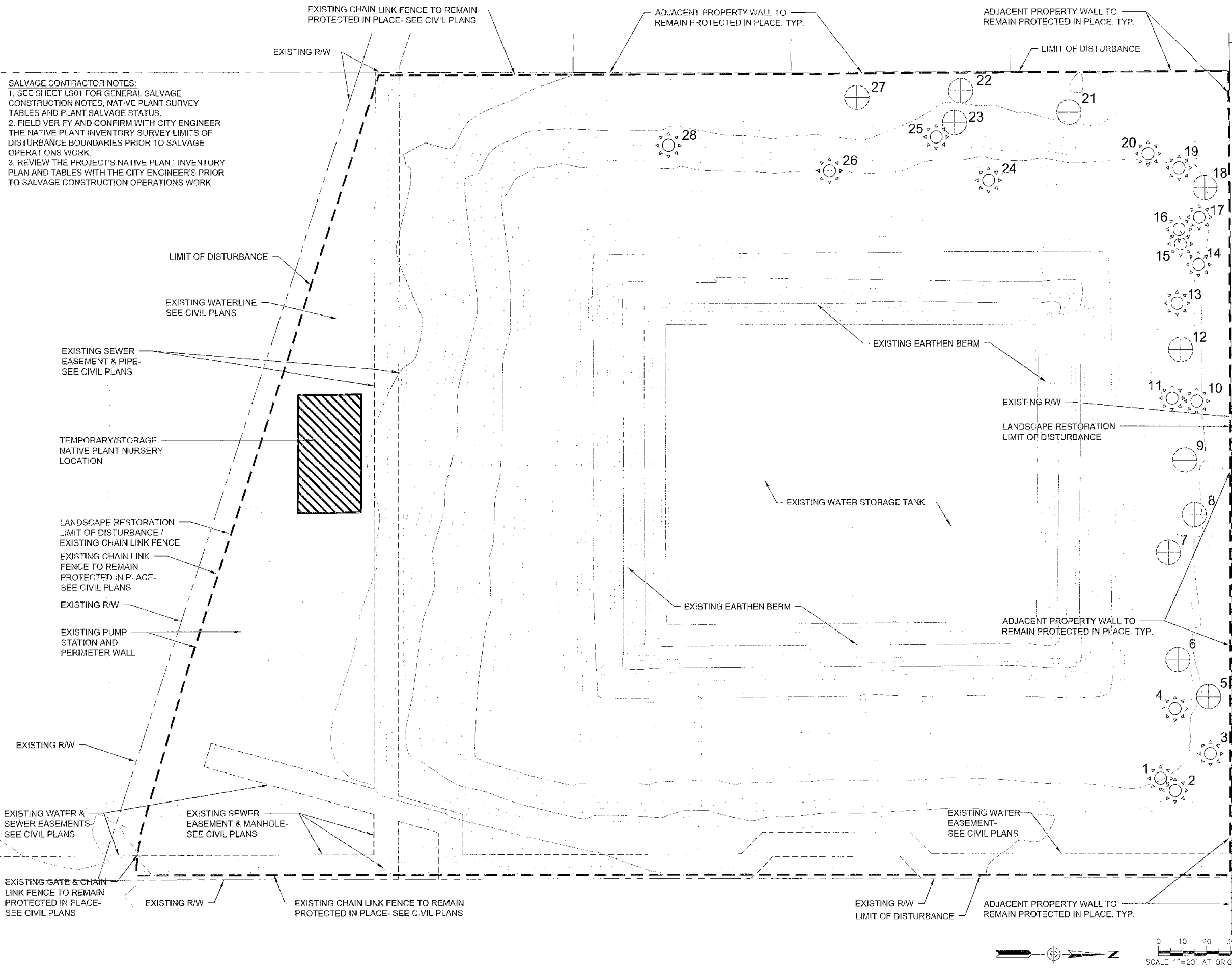


DATE		REVISION		BY	
ENGINEER		SUBMITTAL		PUBLIC WORKS	
60%		PRELIMINARY		WATER RESOURCES DEPARTMENT	
NOT FOR CONSTRUCTION		NOT FOR CONSTRUCTION		8388 E. SAN SALVADOR DR. SCOTTSDALE, AZ 85258	
SHEET TITLE NATIVE PLANT INVENTORY SUMMARY & NOTES					
PACKAGE 1					
PROJECT TITLE ZONE 2 WATER SYSTEM					
SCALE HORIZ: AS SHOWN VERT: NOTED					
DESIGNED RC		DATE MAY 2016		BID NO.	
DRAWN AF		AS-BUILT		PROJECT NO. W005B	
				SHT. LS01	
				36 OF 52	

PLAN REVIEW NO.

Native Plant

P:\61872\001\2008\Sheets\BPS36\BPS36.dwg PLT: BPS36-13 3:30:28m c:\caddac



SALVAGE CONTRACTOR NOTES:  
1. SEE SHEET LS01 FOR GENERAL SALVAGE CONSTRUCTION NOTES, NATIVE PLANT SURVEY TABLES AND PLANT SALVAGE STATUS.  
2. FIELD VERIFY AND CONFIRM WITH CITY ENGINEER THE NATIVE PLANT INVENTORY SURVEY LIMITS OF DISTURBANCE BOUNDARIES PRIOR TO SALVAGE OPERATIONS WORK.  
3. REVIEW THE PROJECT'S NATIVE PLANT INVENTORY PLAN AND TABLES WITH THE CITY ENGINEER'S PRIOR TO SALVAGE CONSTRUCTION OPERATIONS WORK.

**J2** Engineering and Environmental Design  
4649 East Cotton Gin Loop, Suite B2  
Phoenix, Arizona 85040  
Phone: 602-438-2221  
www.j2design.us

**Native Resources**  
INTERNATIONAL  
**Native Resources Intl.**  
1540 W Happy Valley Rd.  
Phoenix, AZ. 85085  
Phone (623) 869-6757  
Fax (623) 869-6769

**NATIVE PLANT INVENTORY**

PLANT #	COMMON NAME	CALIPER (in)/ HEIGHT (ft)	STATUS
1	BARREL	6	S
2	BARREL	6	S
3	SAGUARO	11	S
4	BARREL	6	S
5	FOOTHILLS PALO VERDE	10	S
6	FOOTHILLS PALO VERDE	7	NS
7	FOOTHILLS PALO VERDE	20	NS
8	FOOTHILLS PALO VERDE	6	NS
9	FOOTHILLS PALO VERDE	10	NS
10	BARREL	5	S
11	SAGUARO	38	S
12	FOOTHILLS PALO VERDE	8	NS
13	BARREL	4	S
14	SAGUARO	34	S
15	BARREL	4	NS
16	OCOTILLO	7	S
17	SAGUARO	4	S
18	BLUE PALO VERDE	8	NS
19	SAGUARO	19	S
20	BARREL	6	S
21	MESQUITE	18	NS
22	BLUE PALO VERDE	4	NS
23	HYBRID PALO VERDE	4	NS
24	BARREL	6	S
25	SAGUARO	13	S
26	SAGUARO	15	S
27	BLUE PALO VERDE	5	NS
28	BARREL	4	S

STATUS LEGEND		TREE	CACT
S = SALVAGEABLE		1	16
NS = NON-SALVAGEABLE		10	1
PIP = PROTECT-IN-PLACE		0	0

**NOTES:**  
1. SEE SHEET LS01 FOR GENERAL SALVAGE CONSTRUCTION NOTES, NATIVE PLANT SURVEY TABLES AND PLANT SALVAGE STATUS.  
2. NATIVE PLANTS SHALL BE SALVAGED AND STORED WITHIN TEMPORARY NURSERY AS PART OF THIS PROJECT.  
3. SEE THIS SHEET FOR TEMPORARY NURSERY LOCATION.



DATE: \_\_\_\_\_  
ENGINEER: \_\_\_\_\_

REVISION: \_\_\_\_\_

BY: \_\_\_\_\_

**SUBMITTAL**  
**60%**  
**PRELIMINARY**  
**NOT FOR**  
**CONSTRUCTION**

**PUBLIC WORKS**  
WATER RESOURCES  
DEPARTMENT  
9288 E. SAN SALVADOR DR.  
SCOTTSDALE, AZ 85258

NATIVE PLANT INVENTORY PLAN			
BPS 36			
PROJECT TITLE			
ZONE 2 WATER SYSTEM			
PACKAGE 1			
SCALE	DESIGNED	DATE	B.O. NO.
HORIZ. AS	RC	MAY 2016	SHT. LS02
VERT. NOTED	AF	AS-BUILT	PROJECT NO. WC056
			37 OF 52

PLAN REVIEW NO.

Native plant