

Exterior Building Color & Material Samples

Color Drawdowns

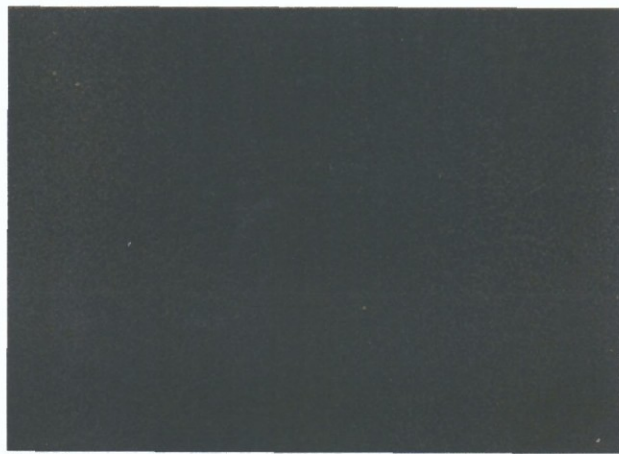
Archaeological Resources

Airport Vicinity Development Checklist

Parking Study

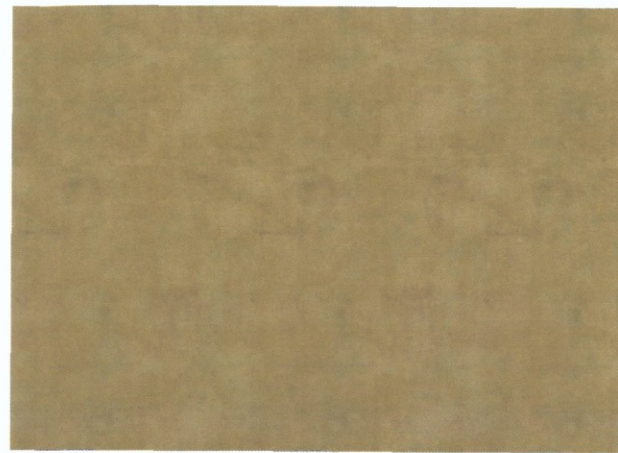
Trip Generation Comparison

Parking Master Plan



M1 ALUMINUM STOREFRONT

MFG: Western Windows (or similar)
COLOR: Dark Bronze
FINISH: Anodized Aluminum
LOCATION: Storefront



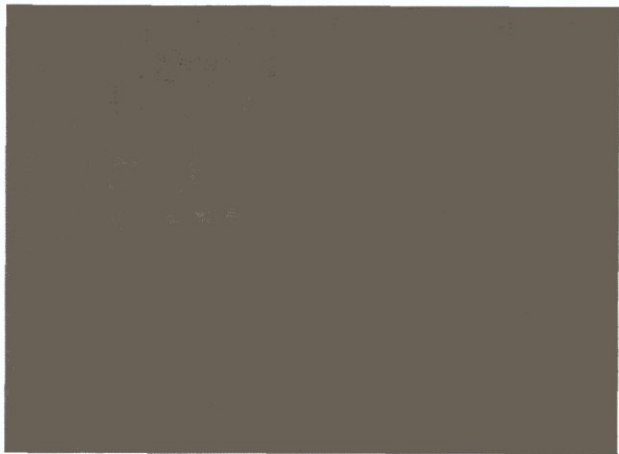
S1 STUCCO FINISH (EXISTING)

MFG: 3-Coat Stucco
TYPE: Antique Plaster Finish
COLOR: Dunn Edwards DE6136, Terracotta Sand
FINISH: Venetian Plaster Finish
LOCATION: Exterior



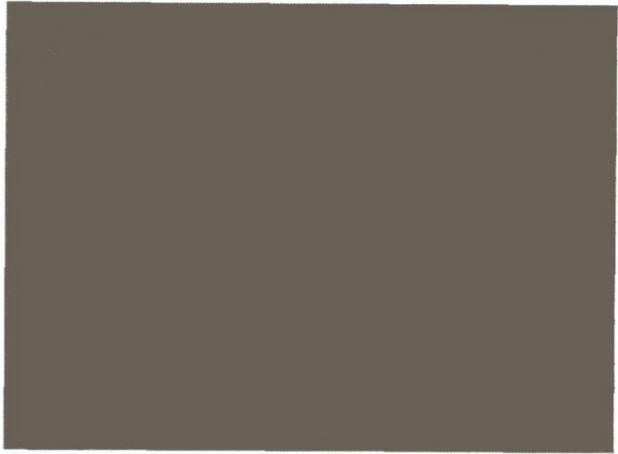
R1 ROOF CLAY TILE (EXISTING)

MFG: Redland Clay Tile
COLOR: "Pointe Blend"
FINISH: 5% Chinked Tiles
LOCATION: Exterior Steel Canopy



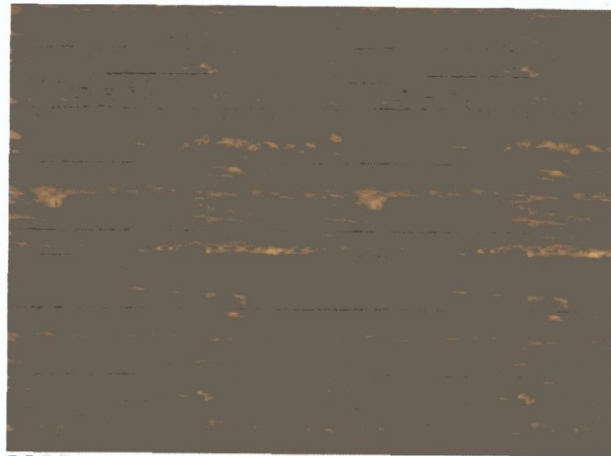
M2 HOT ROLLED STEEL (PRE-WEATHERED)

MFG: Magnum
TYPE: Oxodized Steel 40%
FINISH: Sealed
LOCATION: Trim



S2 STUCCO FINISH (EXISTING)

MFG: 3-Coat Stucco
TYPE: Antique Plaster Finish
COLOR: Dunn Edwards DE6138, Dark Sepia
FINISH: Venetian Plaster Finish
LOCATION: Exterior



W1 WOOD (EXISTING)

MFG: Any Local Supplier
TYPE: Cedar
COLOR: Clear Sealer
FINISH: Rough Sawn Beams
LOCATION: Exterior Patio

FOR: GENUINE CONCEPTS
THE VIG
AT McCORMICK RANCH
EXPANSION
SCOTTSDALE, ARIZONA



DEVELOPMENT REVIEW
COLORS AND MATERIALS
PROJECT # 14024
2016 . 09 . 09



AV3
design studio

45-DR-2016
9/29/2016