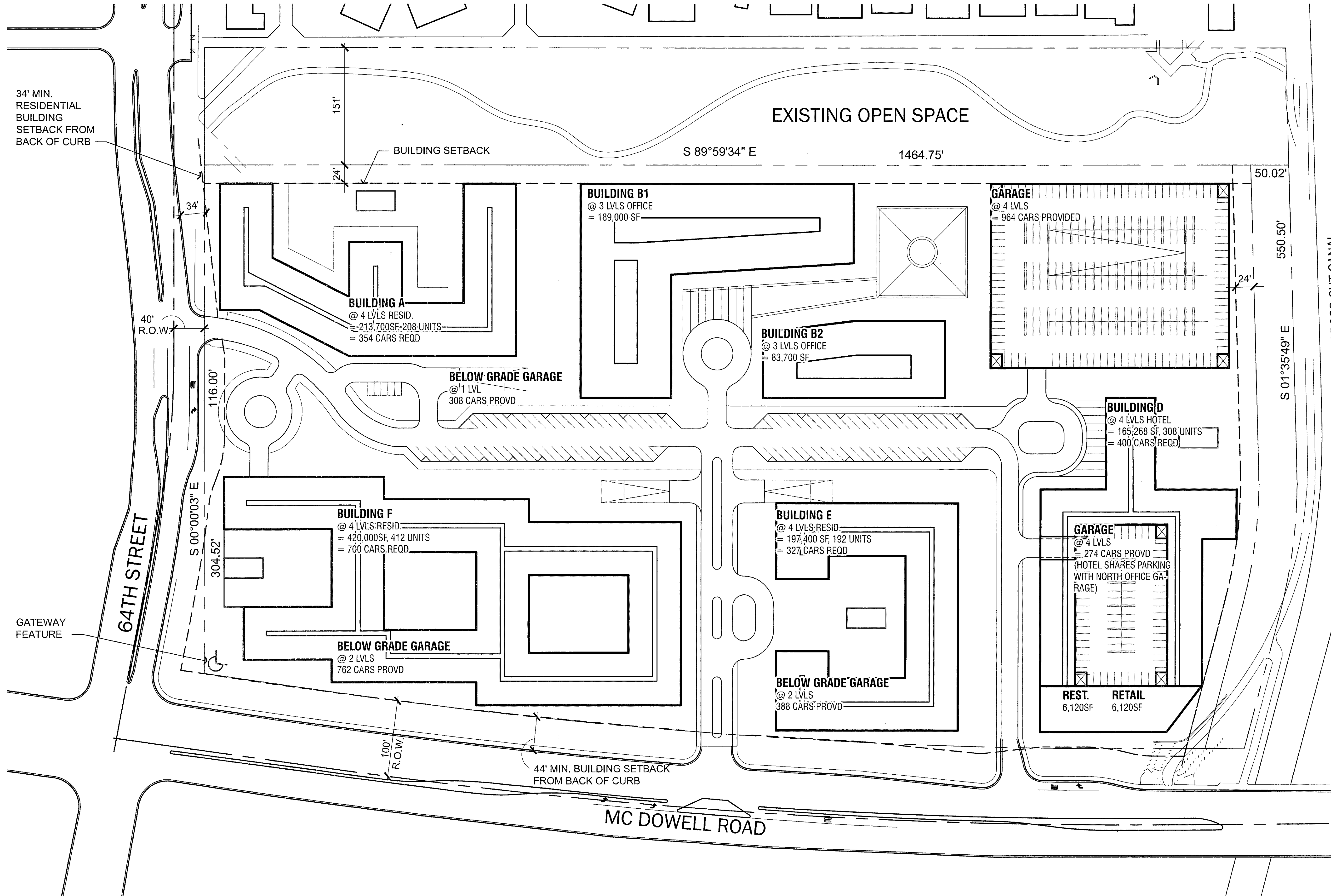


Full Size

8.5 x 11

11 x 17

(site plan, landscape, elevations)



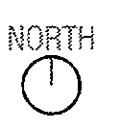
SUMMARY OPT 3	SF	UNITS
Residential	831,100	812
Office	272,700	
Retail	6,120	
Restaurant	6,120	
Hotel	165,268	308
Total	1,281,307	

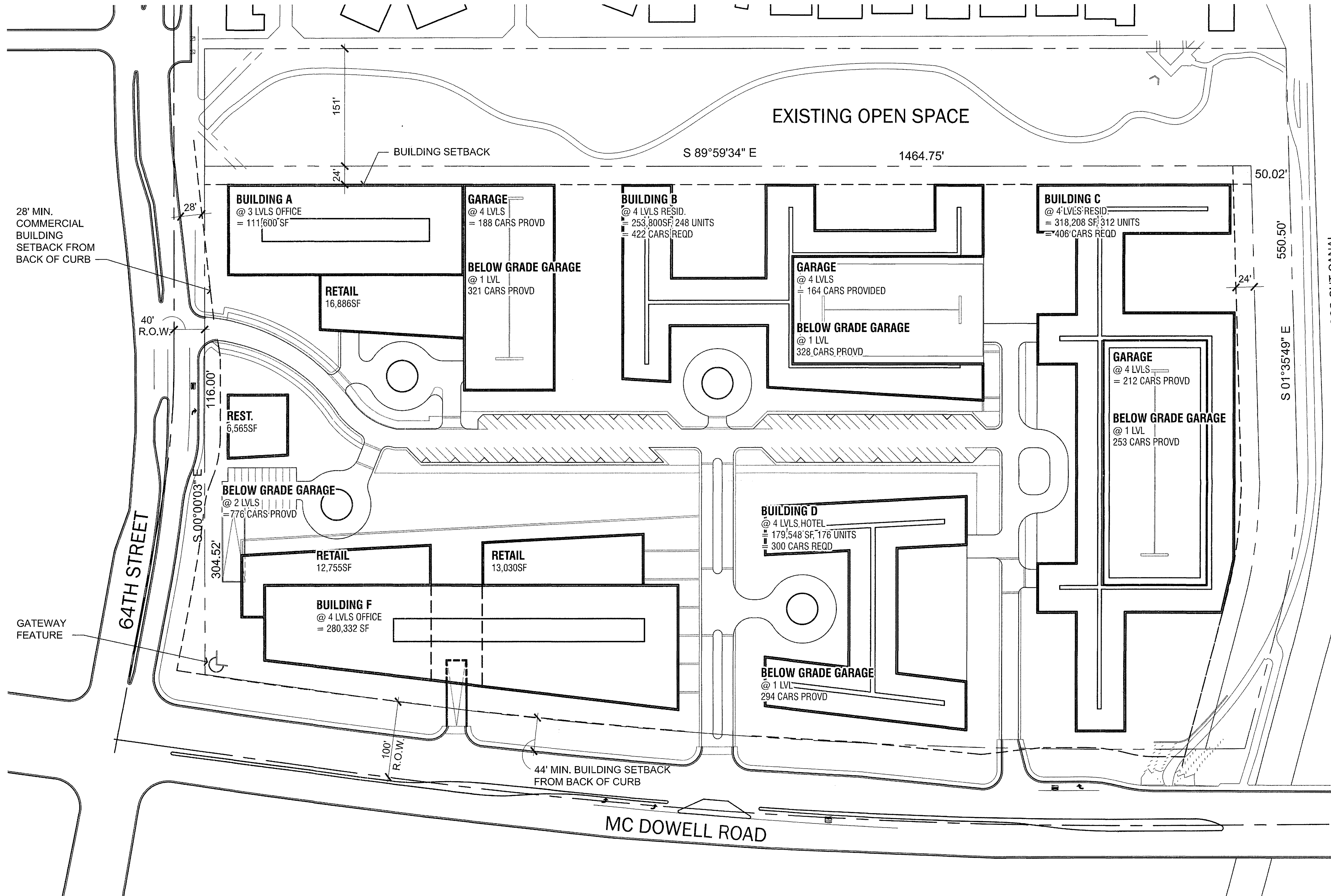
SCOTTSDALE ENTRADA
64th St & McDowell
SCOTTSDALE, AZ | #31377 | MAY 6, 2016
© Nelsen Partners, Inc. 2014

Final Plan Review By:
Rita King (480) 912-2372
rita.king@scottsdaleaz.gov

5-ZN-2016
06/20/16

Option 3
Site Plan
SCALE: 1" = 60'-0"
0' 30' 60' 120'





SUMMARY OPT 2	SF	UNITS
Residential	572,008	560
Office	391,932	
Retail	42,671	
Restaurant	6,565	
Hotel	179,548	176
Total	1,192,724	

SCOTTSDALE ENTRADA
64th St & McDowell
SCOTTSDALE, AZ | #31377 | MAY 6, 2016
© Nelson Partners, Inc. 2014

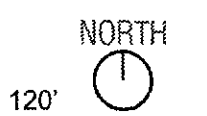
Final Plan Review By:
Rick King (480) 912-2372
rick.king@scottsdaleaz.gov

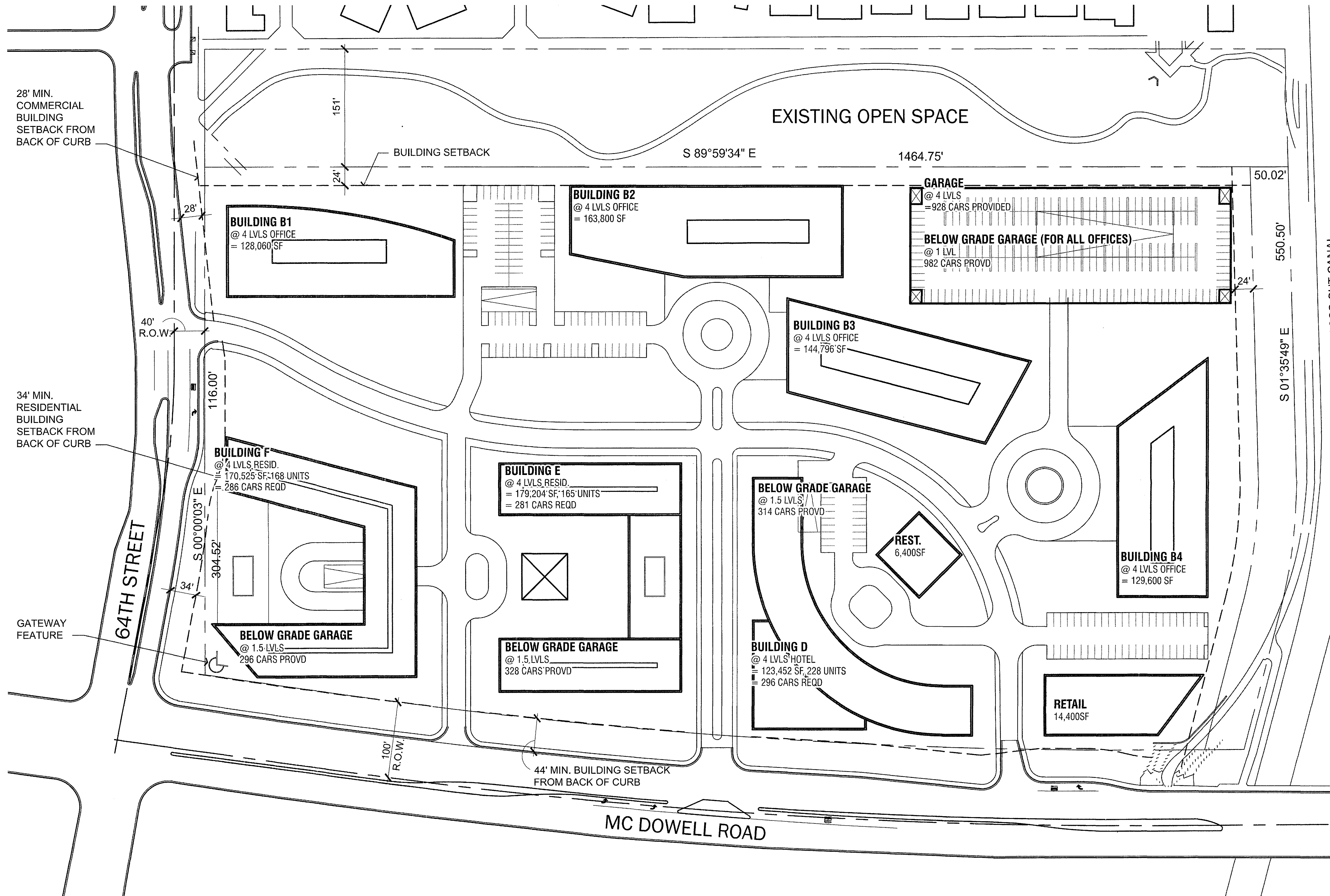
5-ZN-2016
06/20/16

Option 2
Site Plan

SCALE: 1" = 60'-0"

0' 30' 60'





28' MIN. COMMERCIAL BUILDING SETBACK FROM BACK OF CURB

34' MIN. RESIDENTIAL BUILDING SETBACK FROM BACK OF CURB

GATEWAY FEATURE

64TH STREET

MC DOWELL ROAD

EXISTING OPEN SPACE

ARIZONA CROSS CUT CANAL

SUMMARY OPT 1	SF	UNITS
Residential	338,249	333
Office	566,256	
Retail	14,400	
Restaurant	6,400	
Hotel	123,452	228
Total	1,048,757	

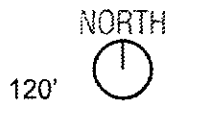
SCOTTSDALE ENTRADA
 64th St & McDowell
 SCOTTSDALE, AZ | #31377 | MAY 6, 2016
 © Nelsen Partners, Inc. 2014

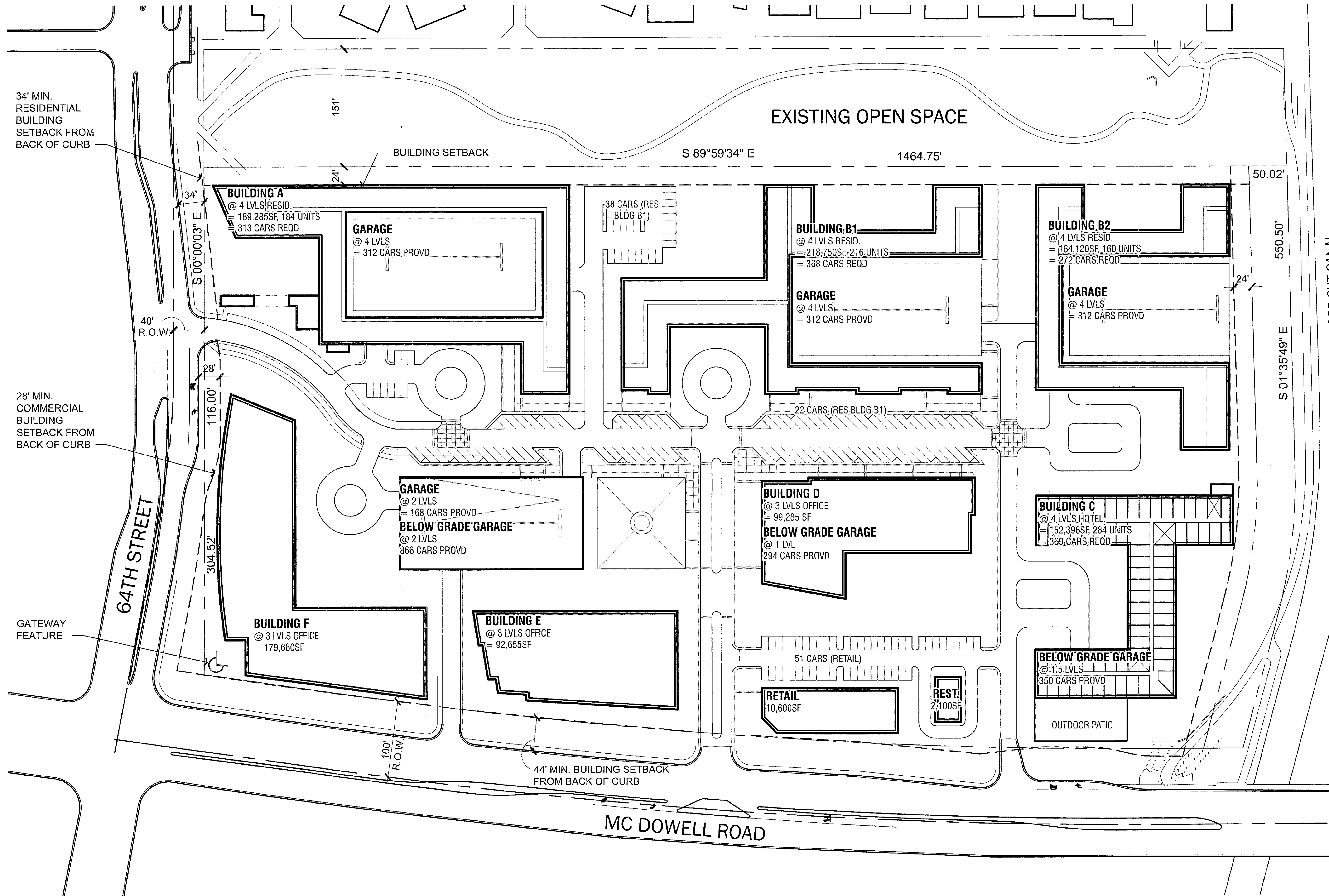
Fire Plan Review By:
 Rick King (480) 312-2372
 email: rking@scottsdaleaz.gov

5-ZN-2016
 06/20/16

Option 1
 Site Plan

SCALE: 1" = 60'-0" | 0' | 30' | 60' | 120'





SUMMARY OPT BASE	SF	UNITS
Residential	572,155	560
Office	371,620	
Retail	10,600	
Restaurant	2,100	
Hotel	152,396	284
Total	1,108,871	

SCOTTSDALE ENTRADA
64th St & McDowell
SCOTTSDALE, AZ | #31377 | MAY 6, 2016
© Nelsen Partners, Inc. 2014

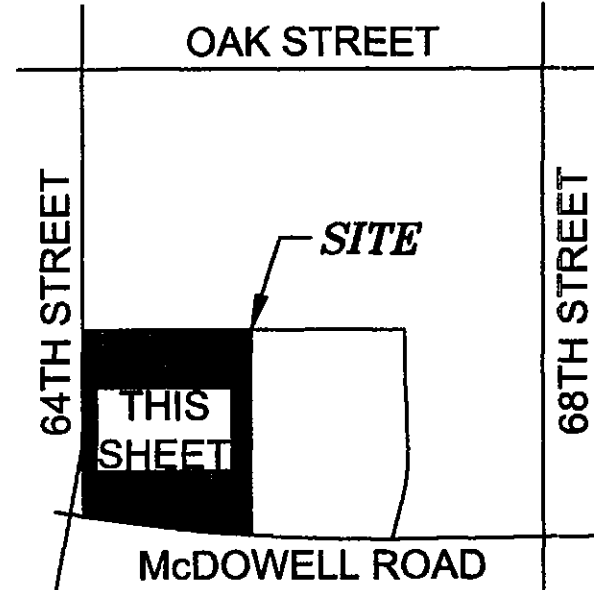
Base Option
Site Plan

SCALE: 1" = 60'-0" 0' 30' 60' 120'



Fire Plan Review By:
Rick King (480) 312-2372
email: rking@scottsdale.gov

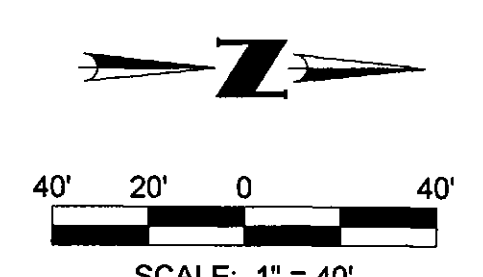
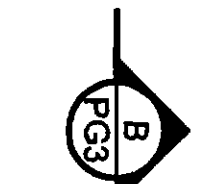
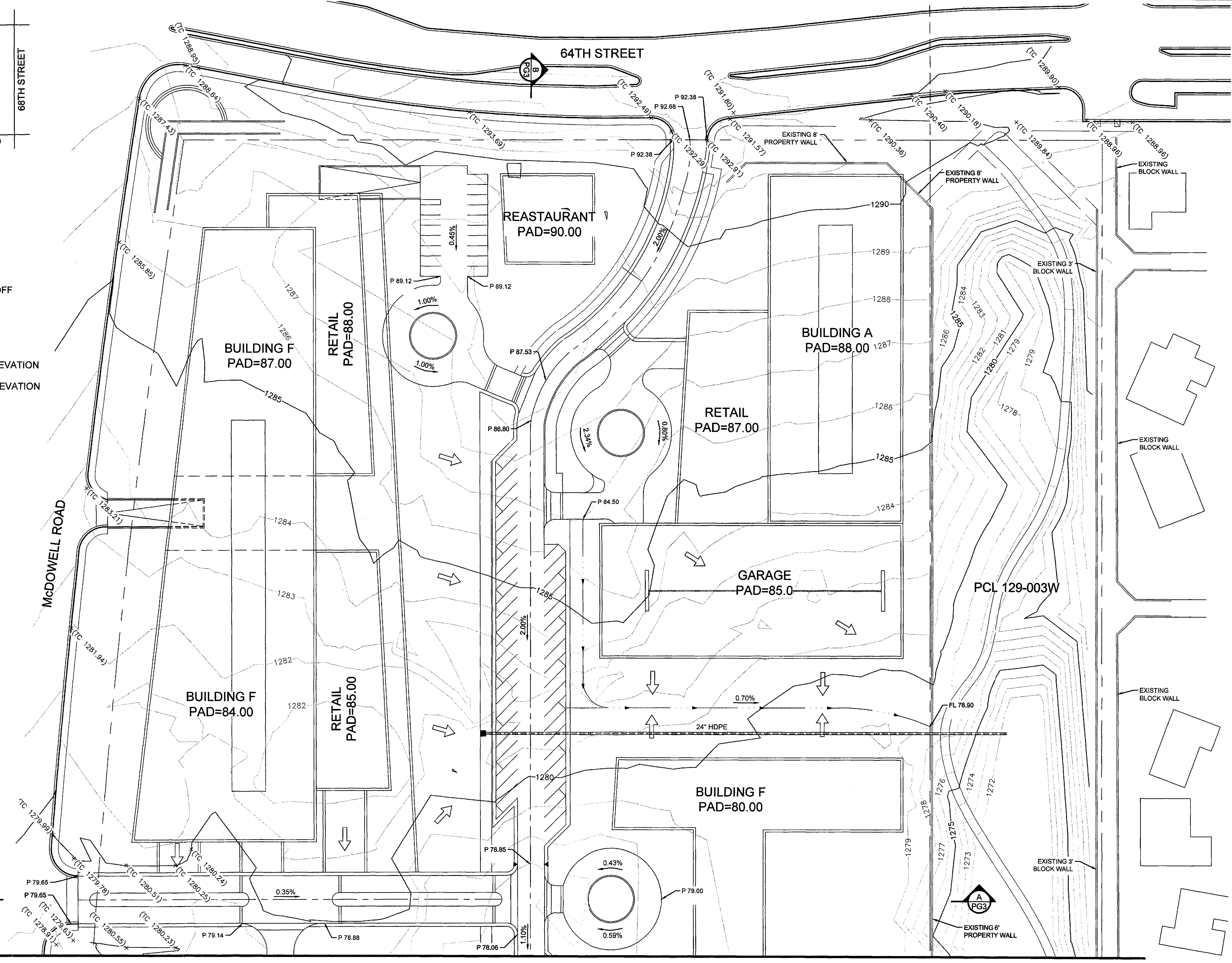
5-ZN-2016
06/20/16



VICINITY MAP
N.T.S.

LEGEND:

- DIRECTION OF ON-SITE RUNOFF
- FEMA ZONE A FLOODPLAIN
- FLOW LINE
- FL 13.5 FLOW LINE ELEVATION
- P 13.5 PAVEMENT ELEVATION

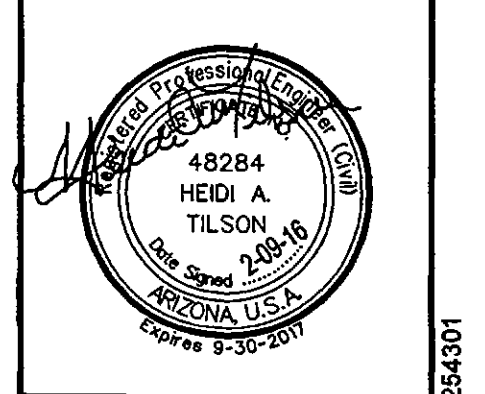


Printed By: Heidi Print Date: February 9, 2016 Filename: N:\010254301\CADD\DS.PRE\GRAD.dwg

CVL
CONSULTANTS
4550 North 12th Street
Phoenix, Arizona 85014
602-264-6831
www.cvlci.com

NO.	REVISION	DATE

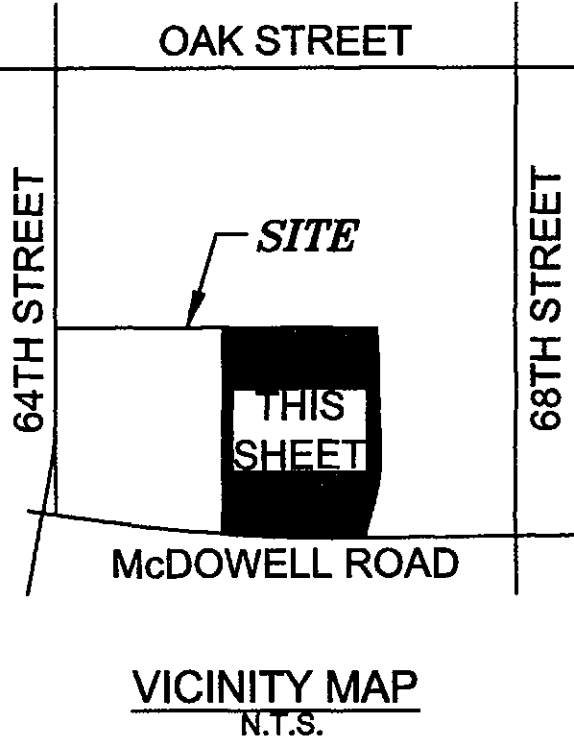
PRELIMINARY GRADING & DRAINAGE PLANS
SCOTTSDALE ENTRADA
SCOTTSDALE, ARIZONA



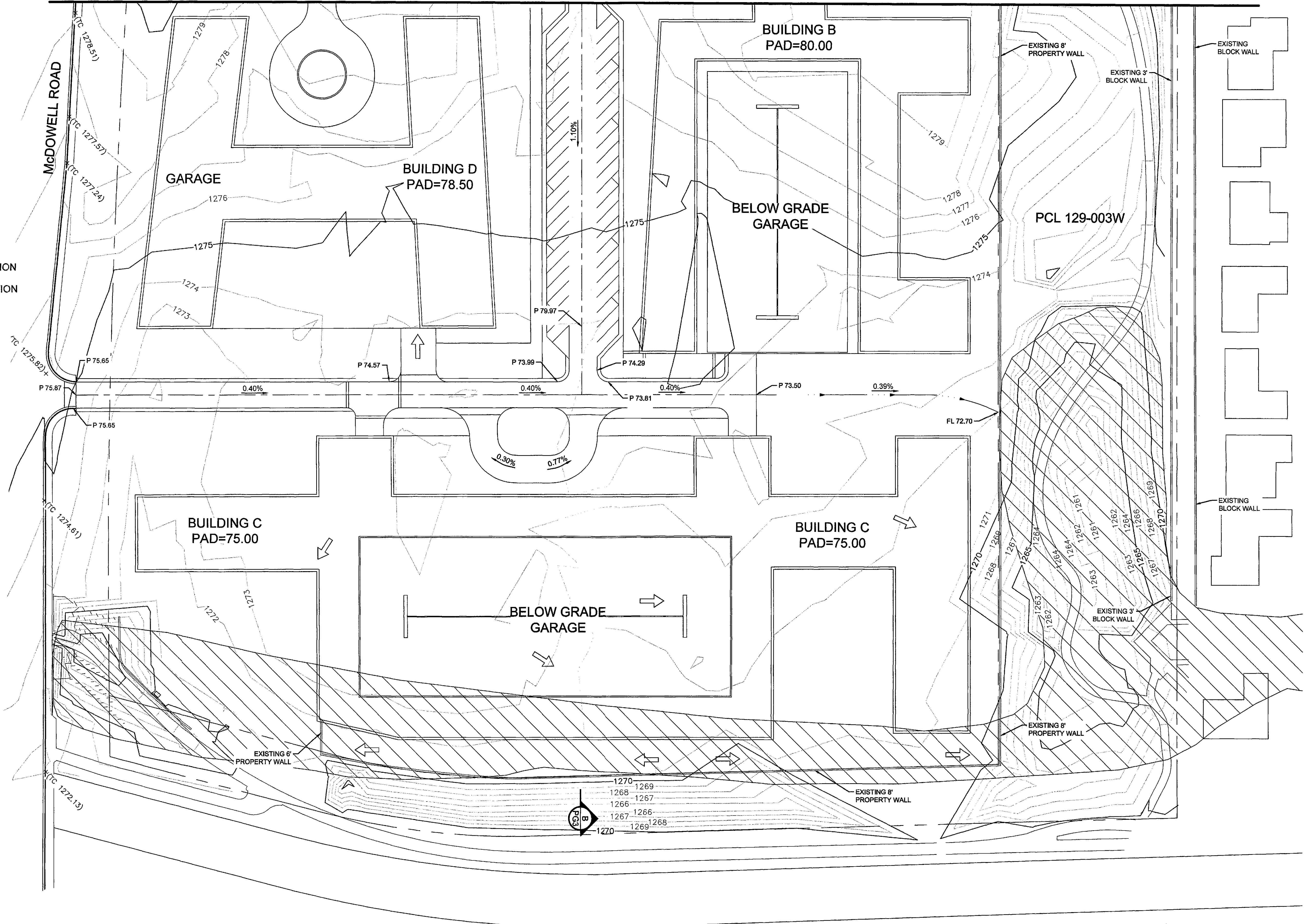
PG1 SHEET OF PG3
CVL Contact: HEIDI TILSON
CVL Project #: 01-0254301
CVL File #:

5-ZN-2016
2/18/16

MATCH SHT 1



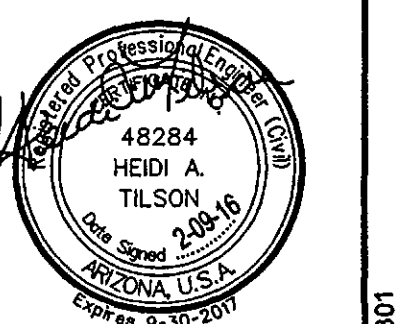
- LEGEND:**
- DIRECTION OF ON-SITE RUNOFF
 - FEMA ZONE A FLOODPLAIN
 - FLOW LINE
 - FL 13.5 FLOW LINE ELEVATION
 - P 13.5 PAVEMENT ELEVATION



CVL CONSULTANTS
 4550 North 12th Street
 Phoenix, Arizona 85014
 602-264-6831
 www.cvlci.com

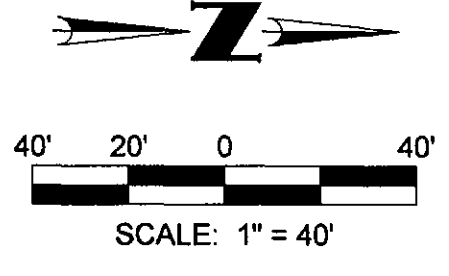
Coe & Van Loo Consultants, Inc.
 SCOTTSDALE, ARIZONA

PRELIMINARY GRADING & DRAINAGE PLANS
SCOTTSDALE ENTRADA
 SCOTTSDALE, ARIZONA



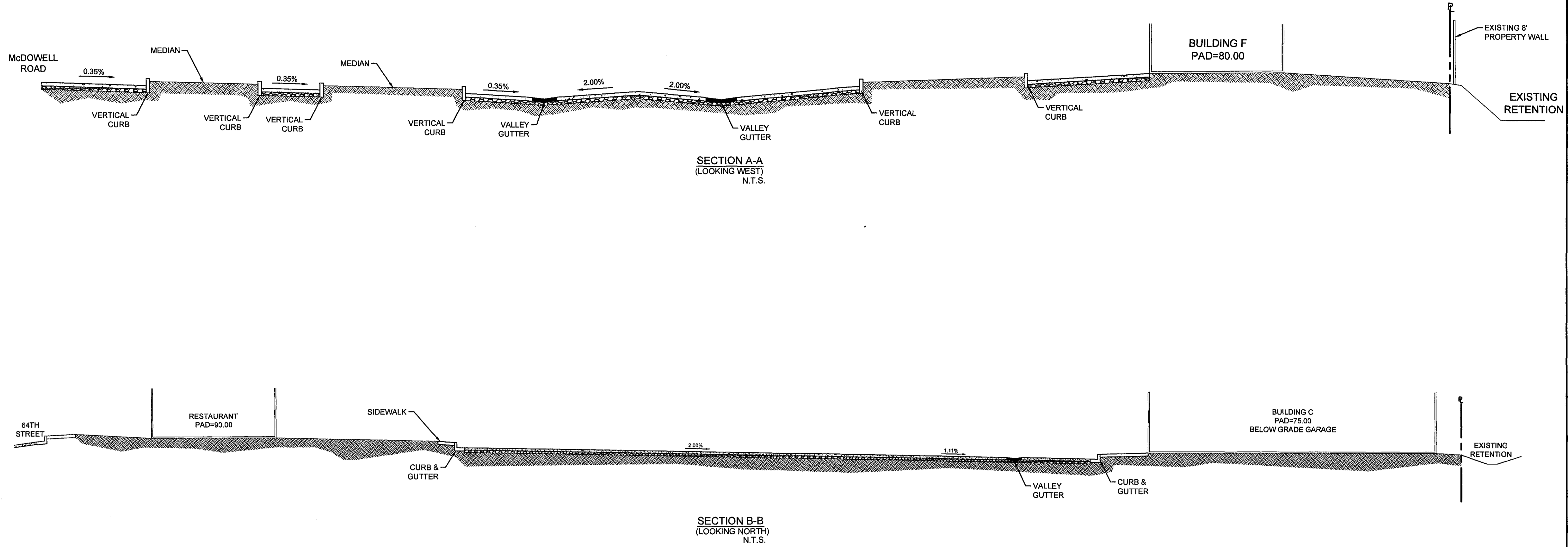
PG2 SHEET OF PG3
 CVL Contact: HEIDI TILSON
 CVL Project #: 01-0254301
 CVL File #:

Printed By: Heidi Print Date: February 9, 2016 Filename: N:\010254301\SCOTTSDALE\PG2.PRE GRAD.dwg



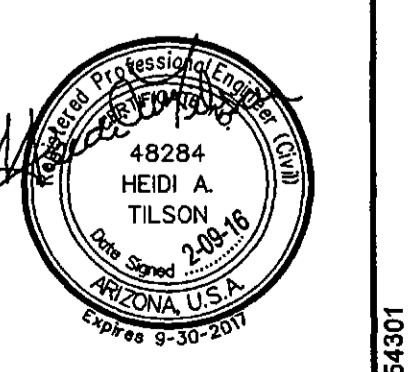
Call at least two full working days before you begin construction.
ARIZONA 811
 Dig 8-1-1 or 1-800-STAKE-IT (736-5346)
 In Maricopa County: (602) 263-1100

PROJECT NO. 01-0254301



NO.	REVISION	DATE

PRELIMINARY GRADING & DRAINAGE PLANS
SCOTTSDALE ENTRADA
SCOTTSDALE, ARIZONA



SHEET PG3 OF PG3
CVL Contact: HEIDI TILSON
CVL Project #: 01-0254301
CVL File #:

