

Simulations
Photos
All Graphics (no plans)

PROPERTIES PROPOSED
FOR REZONING

130-14-009
R-5
APARTMENT
111' - 4 1/2"

130-15-098D
R-5
FOURPLEX

146' - 7"

130-15-098C
R-5
ELDERLY/HANDICAPPED
HOUSING

130-15-047A
R1-7
ELDERLY/HANDICAPPED
HOUSING

82' - 11"

130-15-048
R1-7
FOURPLEX

130-15-048
R1-7
FOURPLEX

130-15-040
R1-7
SINGLE FAMILY

130-15-041
R1-7
SINGLE FAMILY

130-15-042
R-3
TRIPLEX

130-15-098A
R1-7
SINGLE FAMILY

130-15-046
R-3
DUPLEX

130-15-044A
R-3
TRIPLEX

130-15-043A
R-3
TRIPLEX

N. 70TH ST.

229' - 6"

HYDRANT SPACING
496' - 2 1/2"

VARIOUS
R-5
ASSOCIATED COMMERCIAL
(APARTMENTS)

EXISTING FIRE HYDRANT

E. EARL DR.

130-17-039A
R-3
SINGLE FAMILY

EXISTING STREET LIGHT AND
TROLLEY STOP TO BE RELOCATED

130-17-038
R-3
VACANT RESIDENTIAL

130-17-040
R1-7
SINGLE FAMILY

130-17-046C
R1-7
SINGLE FAMILY

130-17-035
C-4
COMMERCIAL

130-17-032
C-4
MINI-STORAGE

EXISTING FIRE HYDRANT



FOR ILLUSTRATIVE
PURPOSES, NOT FOR
APPROVAL OR
CONSTRUCTION



OWNER:
BRUCKAL DEVELOPMENTS
4500 N 32ND ST #100F
PHX, AZ 85018
480.309.4163
STEBRUCKAL@GMAIL.COM

ARCHITECT:
MICHAEL HAUER ARCHITECTURE, LLC
37 W WILLETTA ST.
PHX, AZ 85003
480.510.0610
MHAUER2012@GMAIL.COM

No.	Description	Date
1	REZONE COMMENTS 1	06/15/2016

SCOTTSDALE
TOWNHOMES
EXISTING SITE

Project number 1502.00

Date 06/21/2016

Drawn by MJH

Checked by MJH

RZ000

Scale 1" = 30'-0"

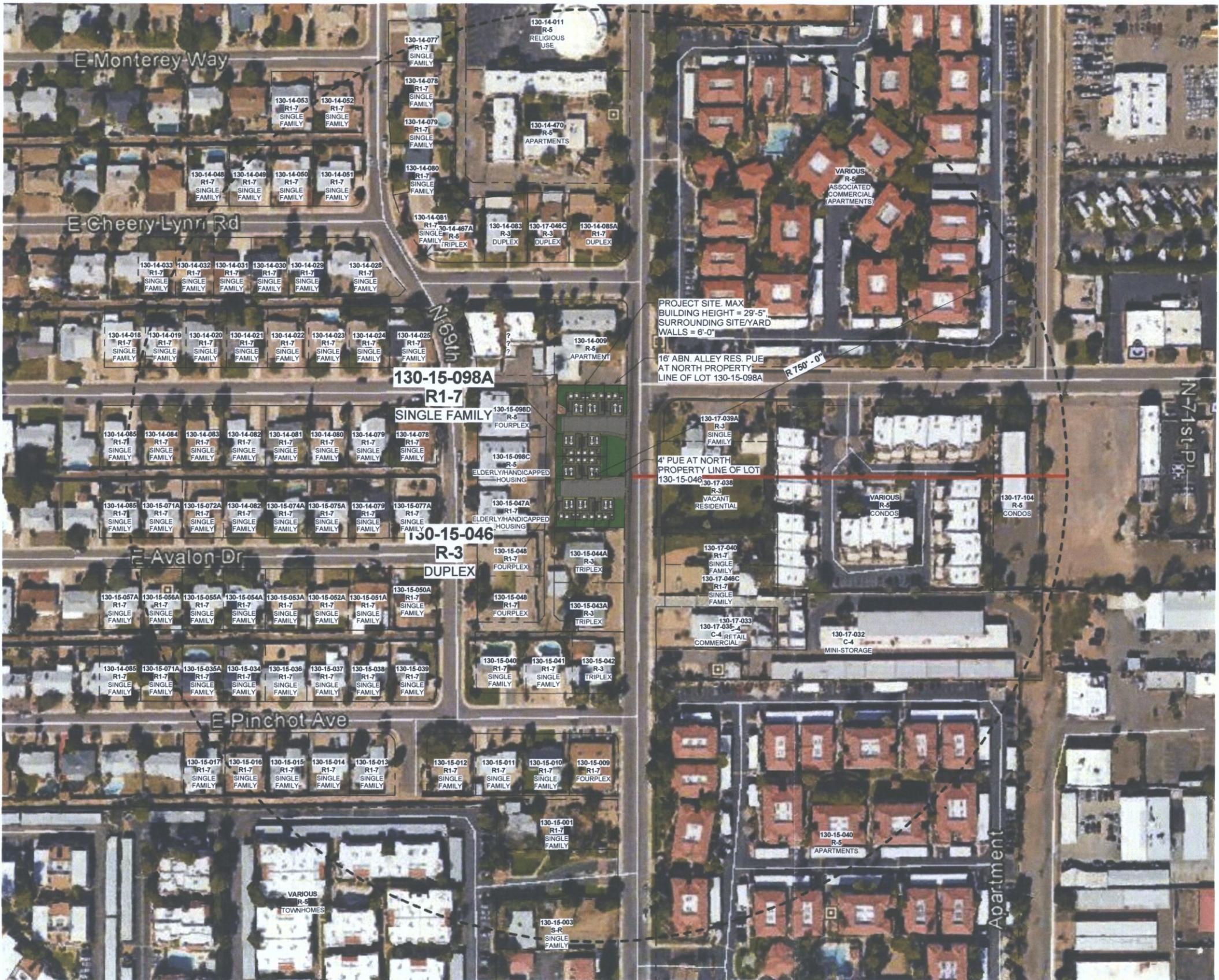
11-ZN-2016
6/23/16

GRAPHIC SCALE



1 00 SITE PLAN EXISTING
1" = 30'-0"

6/21/2016 7:07:38 PM



FOR ILLUSTRATIVE PURPOSES. NOT FOR APPROVAL OR CONSTRUCTION



OWNER:
BRUCKAL DEVELOPMENTS
4500 N 32ND ST. #100F
PHX, AZ 85018
480-509-4153
STEVE@BRUCKAL.COM

ARCHITECT:
MICHAEL HAUER ARCHITECTURE, LLC
37 W WILLETTA ST.
PHX, AZ 85003
480-510-0810
MHAUER212@GMAIL.COM

No.	Description	Date

**SCOTTSDALE TOWNHOMES
CONTEXT AERIAL**

Project number: 1502.00
Date: 06/21/2016
Drawn by: MJH
Checked by: MJH

RZ001

Scale: 1" = 80'-0"

1 00 SITE PLAN CONTEXT AERIAL
1" = 80'-0"

**11-ZN-2016
6/23/16**

6/22/2016 6:09:07 PM

Northwest corner looking east



Northwest corner looking north



Northwest corner looking west



Northwest corner looking south



Northeast corner looking east



Northeast corner looking north



Northeast corner looking west



Northeast corner looking south



East side looking west



East side looking west



Southeast corner looking east



Southeast corner looking north



Southeast corner looking west



Southeast corner looking south



Southwest corner looking east



Southwest corner looking north



Southwest corner looking

Southwest corner looking south



West side looking east



West side looking west



Northwest corner looking northwest



Northeast corner looking northeast



North 69th Place street scene



East side of 70th Street south of Osborn



West side of 70th Street north of Osborn



East side of Marshall Way south of 2nd Street

