

**Final Approved Stamped Plans  
Full Size**

**PARKING CALCULATIONS**

PARKING REQUIRED (BEFORE WAIVER APPLIED):  
 OFFICE 1 SPACE PER 300 SF OF GROSS FLOOR AREA  
 GROSS FLOOR AREA: 4,458 SF  
 PARKING SPACES REQ: 4458/300 = 14.85 15 SPACES

PARKING WAIVER:  
 PURSUIT TO THE DOWNTOWN OVERLAY DISTRICT PARKING PROGRAM, A PARKING WAIVER IS ALLOWED FOR BUILDING AREA EXPANSIONS WHEN SUCH EXPANSIONS WILL HAVE MINIMAL IMPACT ON PARKING DEMAND. THIS WAIVER IS BASED ON MEETING TWO CRITERIA: THE BUSINESS IS WITHIN THE DOWNTOWN OVERLAY OR DOWNTOWN DISTRICT, AND THE NEW AREA OF THE EXPANSION IS USED FOR RETAIL, OFFICE, RESTAURANT, OR PERSONAL CARE SERVICES. THIS WAIVER EXEMPTS ONE (1) SPACE PER 300 GROSS SQUARE FEET OF NEW BUILDING AREA UP TO 2,000 SF.

NEW BUILDING AREA: 1800 SF  
 SPACES WAIVED: 1800/300 = 6 SPACES  
 6 SPACES  
 9 SPACES  
 11 SPACES  
 BICYCLE PARKING:  
 REQUIRED (PER 9.103,C) = 2 SPACES  
 PROVIDED 2 SPACES

**PROJECT DATA**

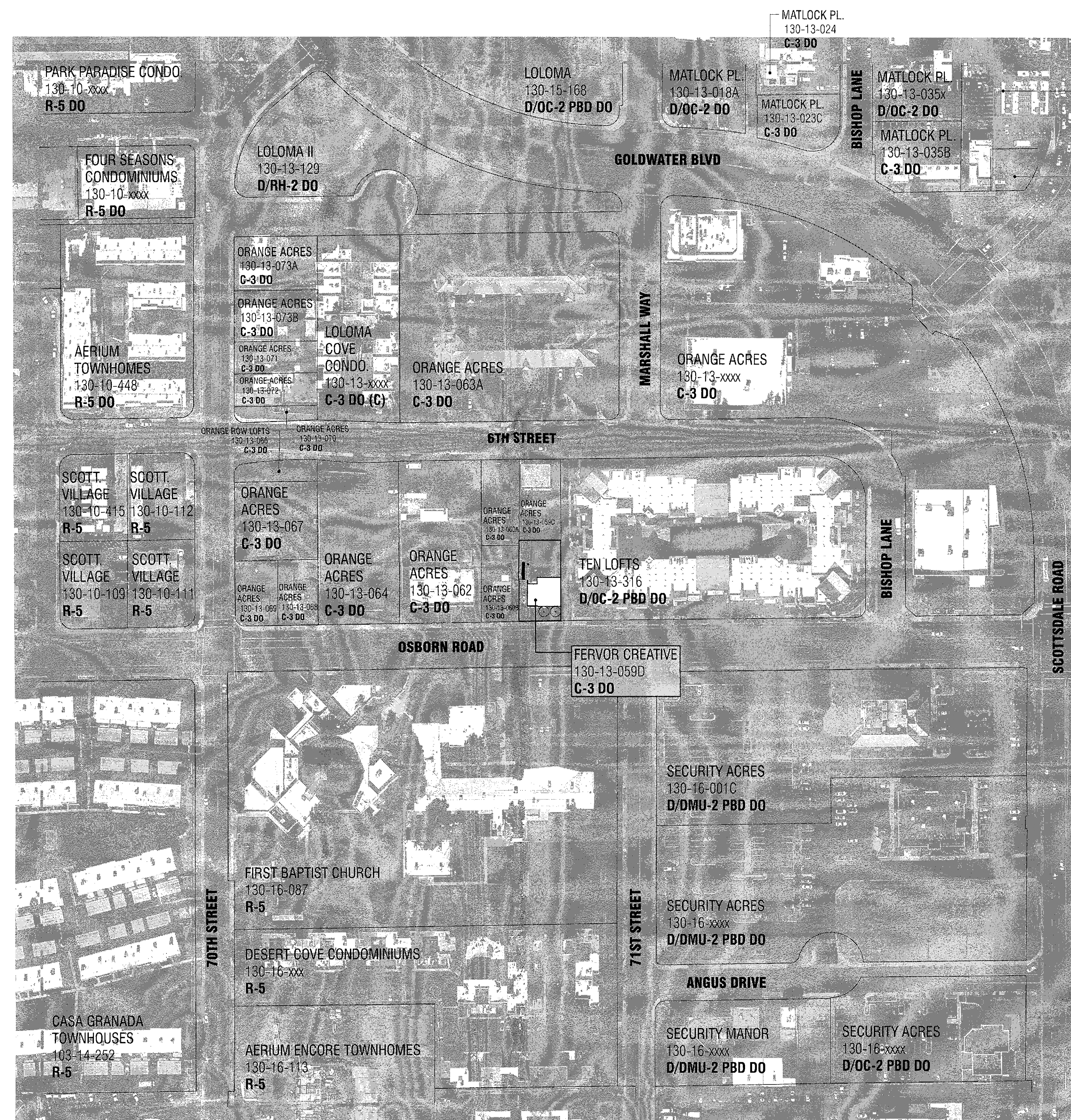
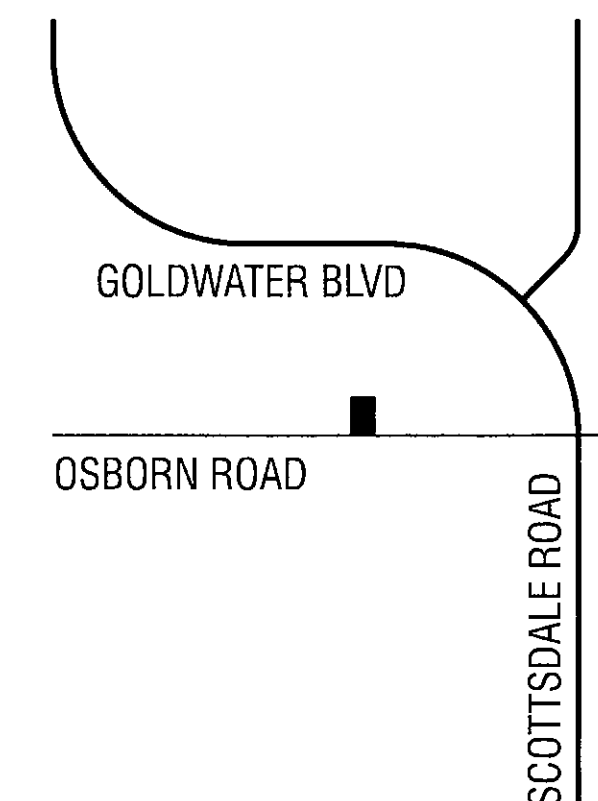
GROSS LOT AREA 11,270 SF  
 NET LOT AREA 8,554 SF  
 GROSS FLOOR AREA 4,458 SF  
 BUILDING FOOTPRINT 2,175 SF  
 LOT COVERAGE (2175/8554) 25%  
 GROSS FLOOR AREA RATIO (GFAR PER DO ZONING) ALLOWABLE 1.3  
 PROVIDED (4458/11270) .39

**SITE PLAN GENERAL NOTES**

A NO NEW WORK TO BE COMPLETED IN R.O.W.

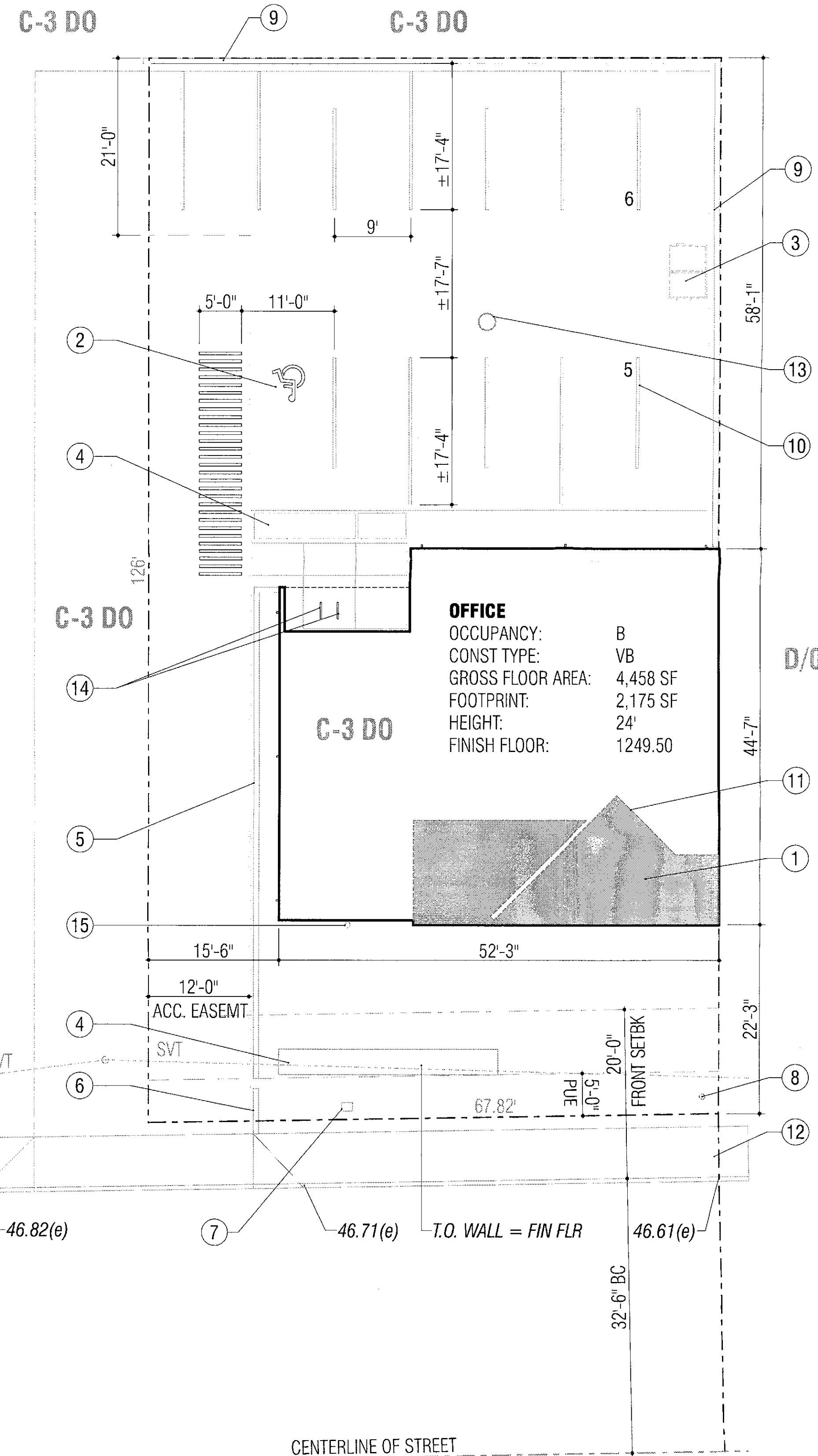
**SITE PLAN KEYED NOTES**

- 1 SHADED AREA INDICATES ADDITION TO BUILDING FOOTPRINT.
- 2 VAN ACCESSIBLE PARKING SPACE TO BE RELOCATED AS SHOWN.
- 3 EXISTING LOCATION OF PRIVATELY-MAINTAINED TRASH RECEPTACLE.
- 4 EXISTING GABION WALL TO REMAIN
- 5 EXISTING CMU LANDSCAPE HEADER TO REMAIN
- 6 LOCATION OF EXISTING BUILDING MARQUEE TO REMAIN: WEATHERED STEEL PLATE ON EXPOSED CENTER-SCORED CMU.
- 7 EXISTING IN-GROUND WATER METER IN BOX.
- 8 EXISTING ABOVE-GROUND TELECOM JUNCTION BOX.
- 9 EXISTING 6' HIGH CMU SITE WALL.
- 10 EXISTING PARKING STRIPING TO REMAIN.
- 11 DASHED LINE INDICATES EXTENT OF EXISTING BUILDING.
- 12 EXISTING 6' WIDE CONCRETE SIDEWALK TO REMAIN
- 13 EXISTING DRYWELL TO REMAIN
- 14 LOCATION OF NEW BIKE HOOP
- 15 EXISTING WATER MAIN CONNECTION TO BUILDING



SCOTTSDALE CREATIVE ART  
 130-13-414  
**C-3 DO + D/OC-2 DO**

MATLOCK PL.  
 130-13-039H  
**C-3 DO**



city of scottsdale 52-DR-2016

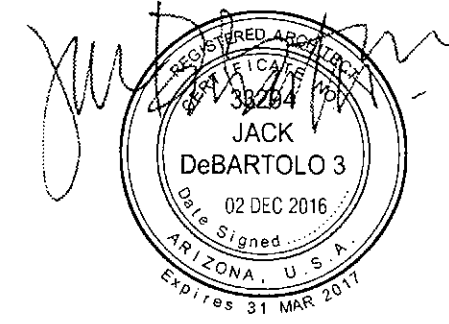
**FERVOR**

FERVOR CREATIVE  
 7038 E OSBORN ROAD  
 SCOTTSDALE, ARIZONA 85251

© copyright 2016  
 16174

**debartoloarchitects**

4450 north 12th street  
 number 268  
 phoenix, arizona 85014  
 tel 602.264.6617  
 jack3@debartoloarchitects.com



CONTEXT AERIAL + SITE PLAN

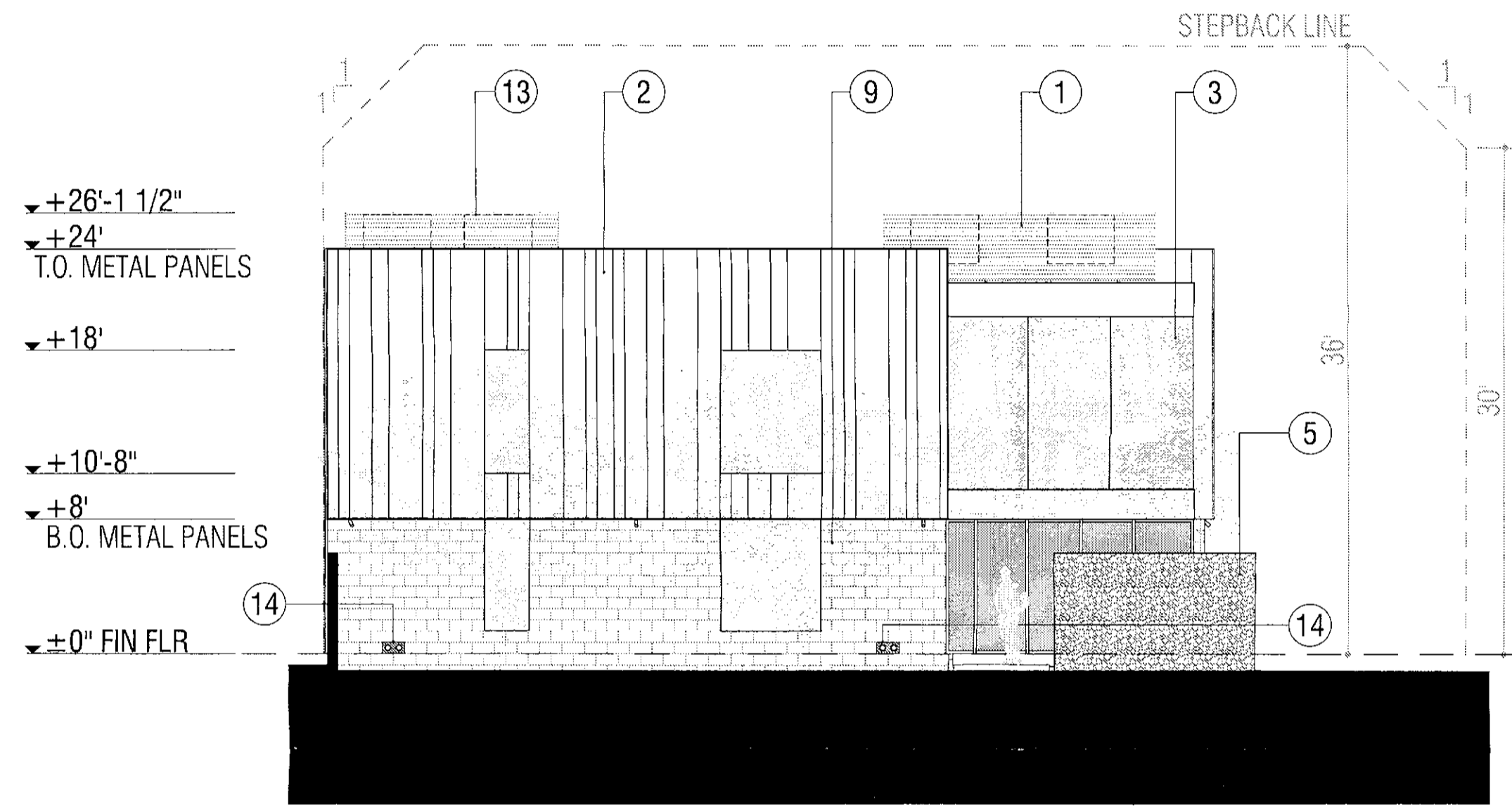
**DR1.0**

STIPULATION SET  
 RETAIN FOR RECORDS  
 APPROVED

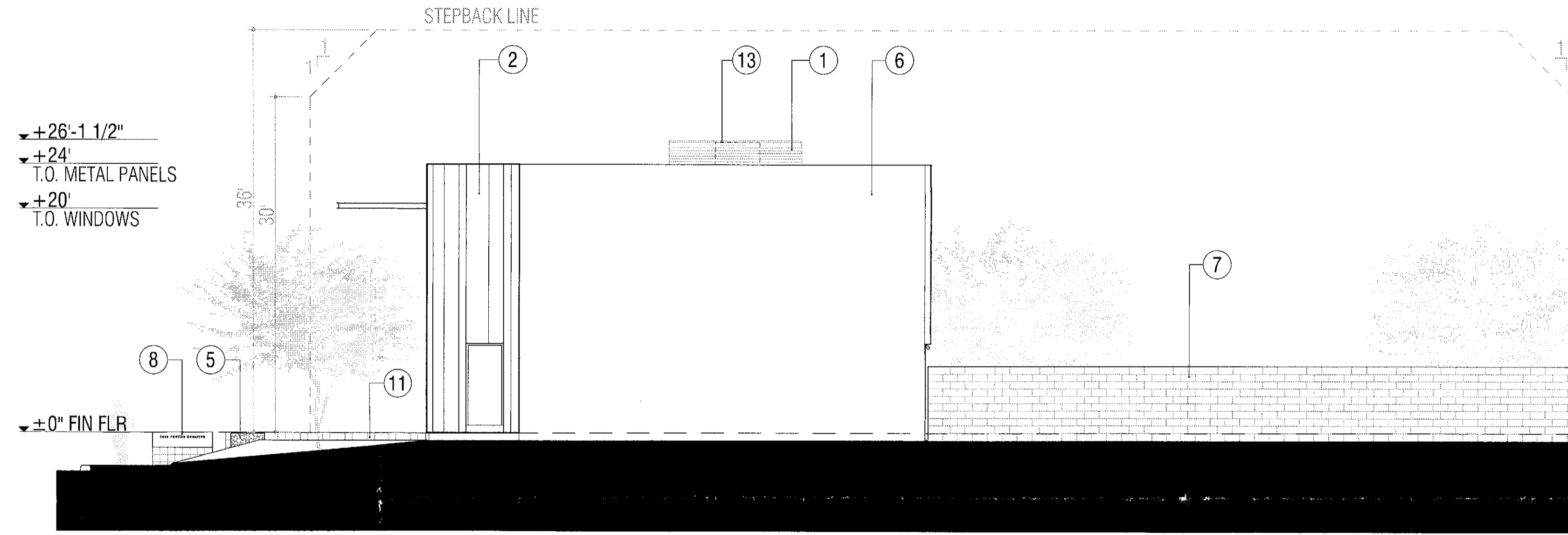
DATE 1/20/17 INITIALS

KEYED NOTES

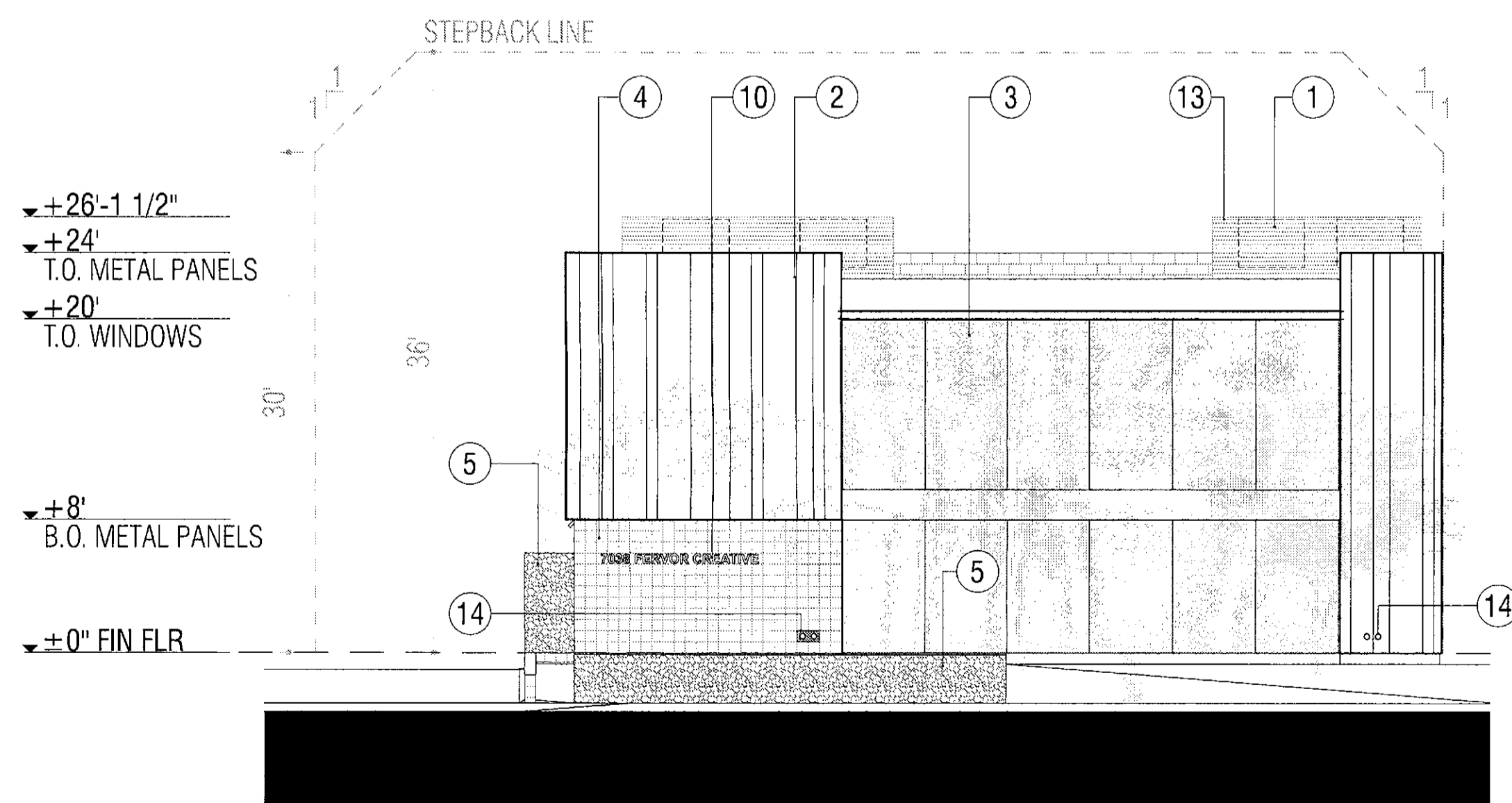
- 1 MECHANICAL EQUIPMENT SCREENING: WEATHERED 7/8" CORRUGATED METAL.
- 2 METAL CLADDING: WEATHERED STANDING SEAM IN (3) WIDTHS.
- 3 CLEAR, LOW-E, INSULATED GLAZING
- 4 EXISTING EXPOSED CENTER-SCORE CMU TO REMAIN AND BE LIGHTLY SANDBLASTED.
- 5 EXISTING GABION WALL TO REMAIN
- 6 EXISTING STUCCO TO REMAIN
- 7 EXISTING EXPOSED CMU SITE WALL TO REMAIN
- 8 EXISTING BUILDING MARQUEE TO REMAIN
- 9 EXISTING STUCCO TO BE REMOVED TO EXPOSE EXISTING CMU. FINISH TO BE LIGHTLY SANDBLASTED.
- 10 EXISTING BUILDING ADDRESS TO REMAIN
- 11 EXISTING CENTER-SCORE CMU LANDSCAPE HEADER TO REMAIN AND BE LIGHTLY SANDBLASTED.
- 12 WEATHERED STEEL CHANNEL
- 13 MECHANICAL UNIT BEHIND SCREENING
- 14 ROOF DRAIN PRIMARY AND OVERFLOW PIPING TO BE ROUTED INTERNALLY AND SHALL DISCHARGE AT GRADE. AT EXISTING MASONRY CONSTRUCTION, ONE BLOCK SHALL BE REMOVED AND A STEEL PLATE ASSEMBLY INSTALLED TO CONTAIN BOTH DRAIN PIPES. STEEL SHALL BE ALLOWED TO WEATHER.



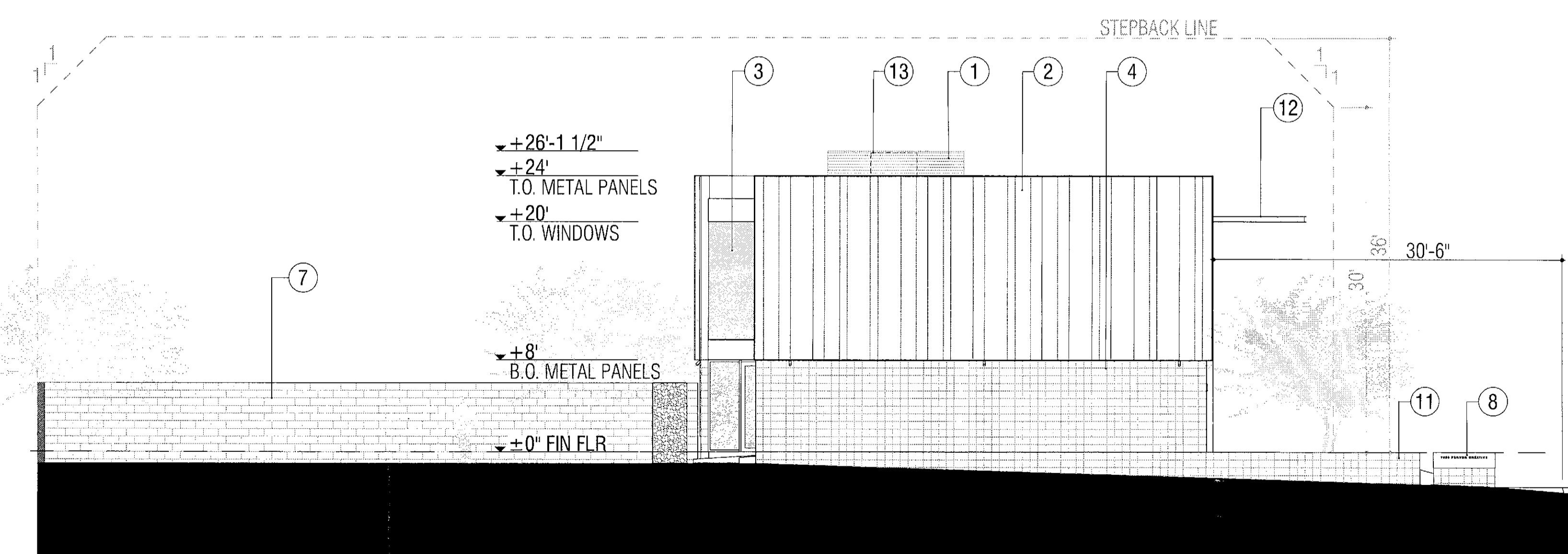
1 NORTH ELEVATION  
SCALE: 1/8" = 1'-0"



2 EAST ELEVATION  
SCALE: 1/8" = 1'-0"



3 SOUTH ELEVATION  
SCALE: 1/8" = 1'-0"



4 WEST ELEVATION  
SCALE: 1/8" = 1'-0"

city of scottsdale 52-DR-2016

# FERVOR

FERVOR CREATIVE  
7038 E OSBORN ROAD  
SCOTTSDALE, ARIZONA 85251

© copyright 2016  
16174

## debartoloarchitects

4450 north 12th street  
number 268  
phoenix, arizona 85014  
tel 602.254.6617  
jack3@debartoloarchitects.com



BUILDING ELEVATIONS

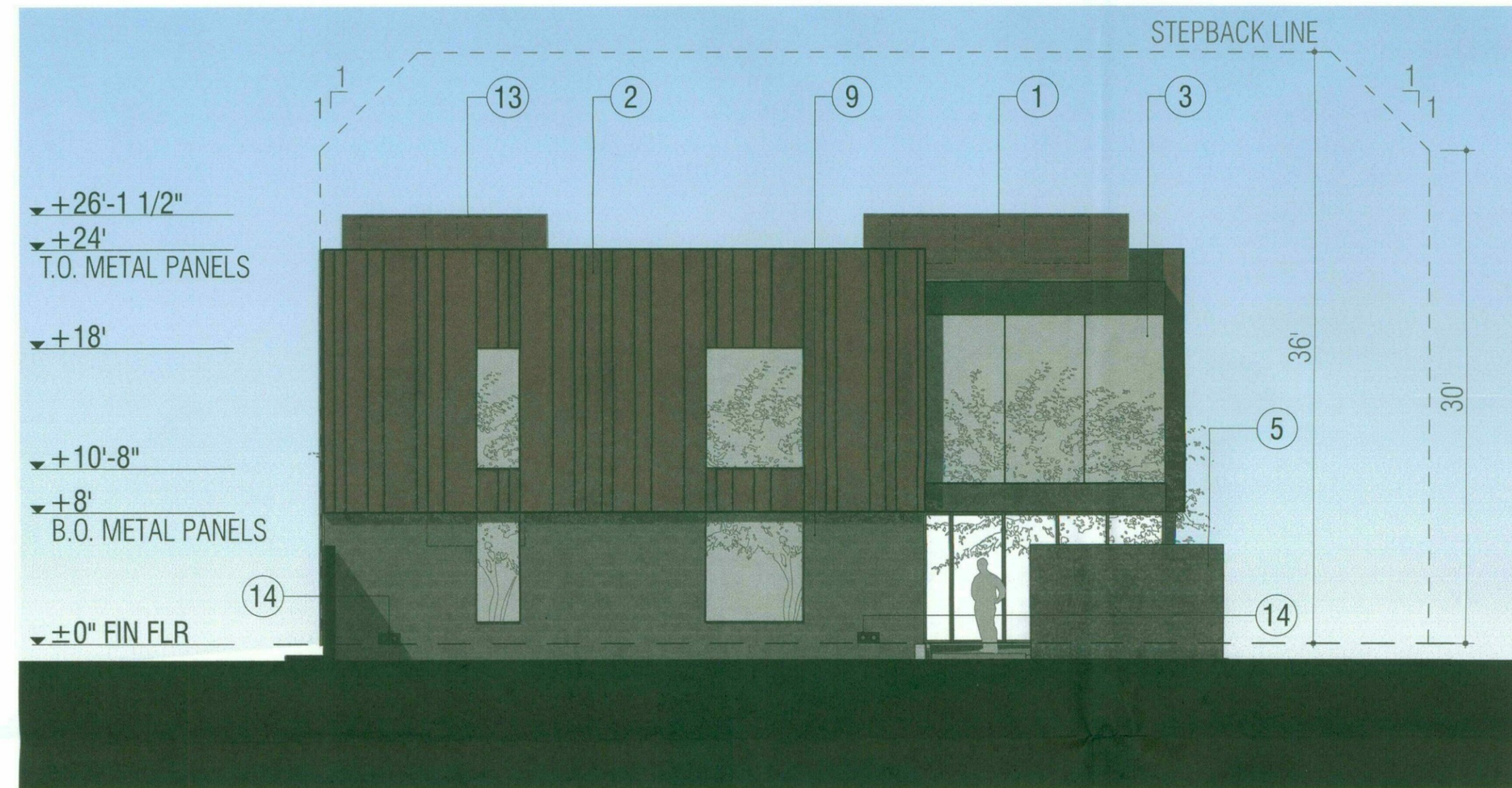
# DR1.1

STIPULATION SET  
RETAIN FOR RECORDS  
APPROVED

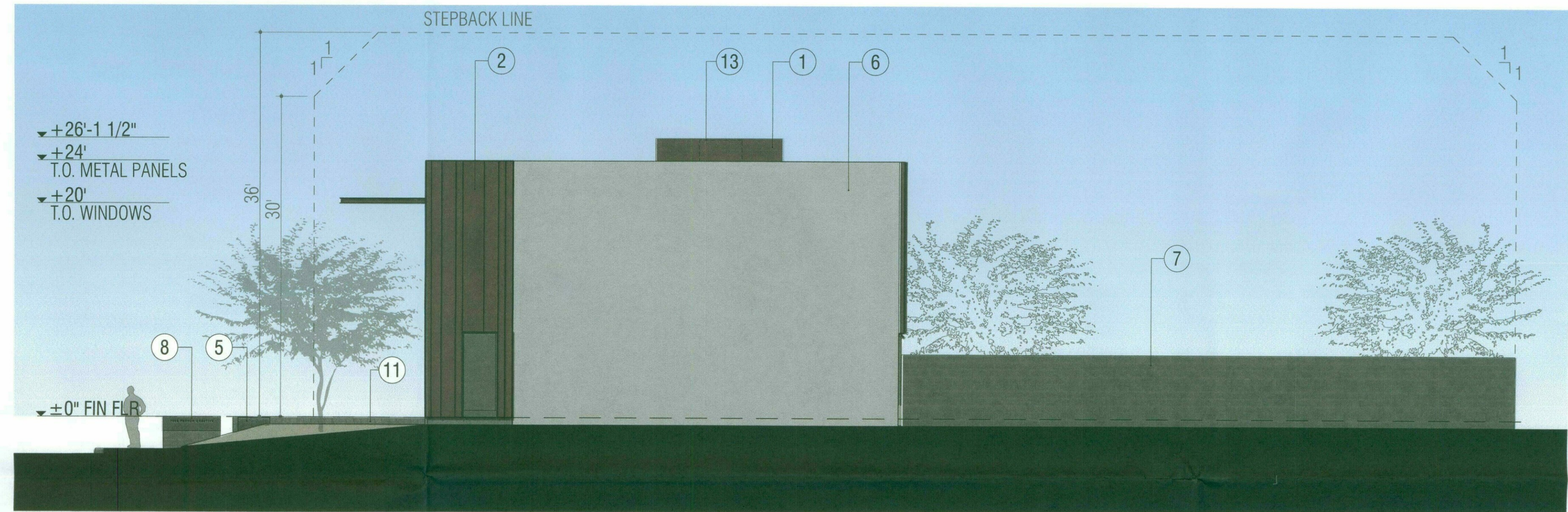
1/20/17 DATE INITIALS

**KEYED NOTES**

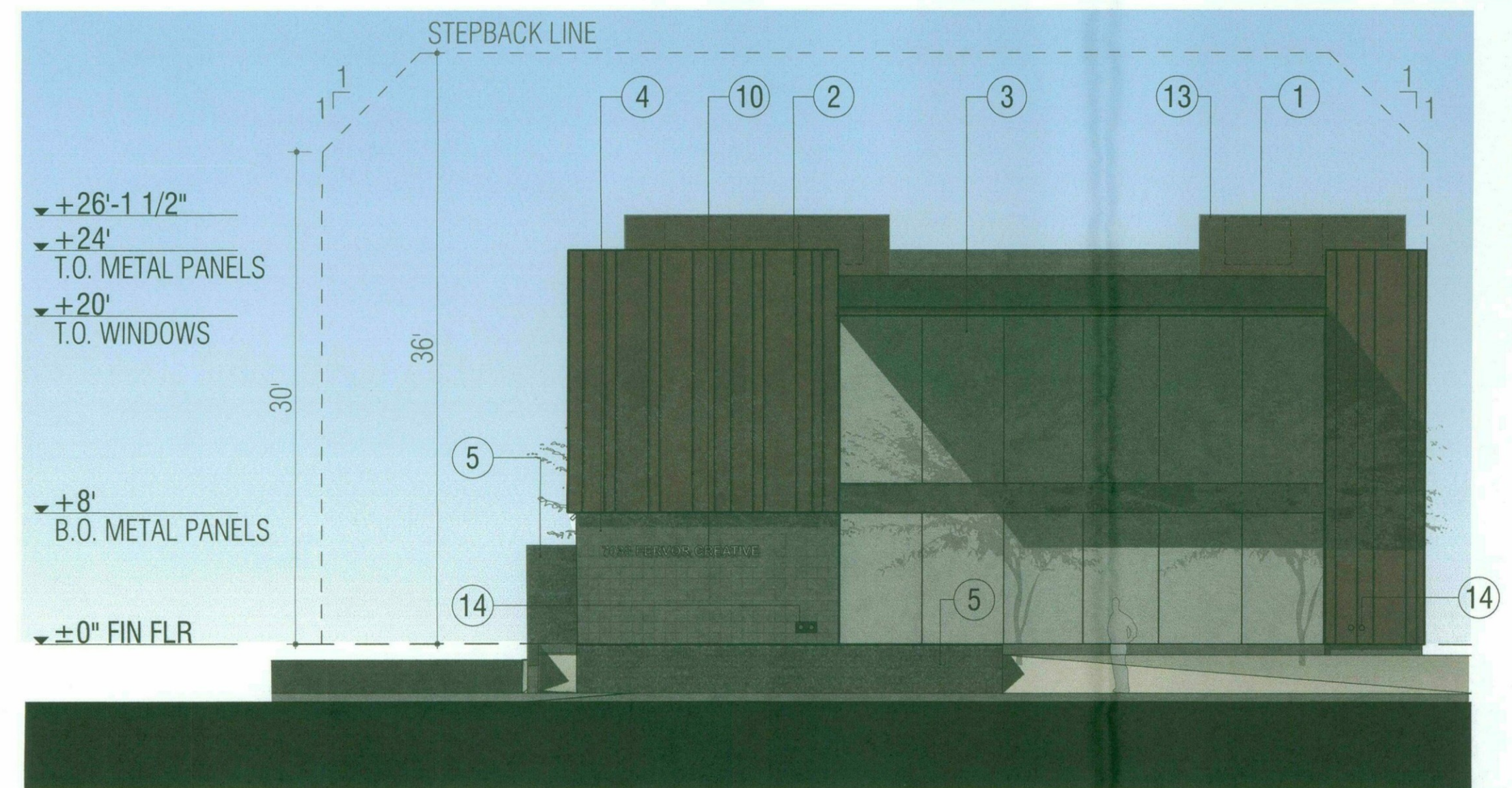
- 1 MECHANICAL EQUIPMENT SCREENING: WEATHERED 7/8" CORRUGATED METAL.
- 2 METAL CLADDING: WEATHERED STANDING SEAM IN (3) WIDTHS.
- 3 CLEAR, LOW-E, INSULATED GLAZING
- 4 EXISTING EXPOSED CENTER-SCORE CMU TO REMAIN AND BE LIGHTLY SANDBLASTED.
- 5 EXISTING GABION WALL TO REMAIN
- 6 EXISTING STUCCO TO REMAIN
- 7 EXISTING EXPOSED CMU SITE WALL TO REMAIN
- 8 EXISTING BUILDING MARQUEE TO REMAIN
- 9 EXISTING STUCCO TO BE REMOVED TO EXPOSE EXISTING CMU. FINISH TO BE LIGHTLY SANDBLASTED.
- 10 EXISTING BUILDING ADDRESS TO REMAIN
- 11 EXISTING CENTER-SCORE CMU LANDSCAPE HEADER TO REMAIN AND BE LIGHTLY SANDBLASTED.
- 12 WEATHERED STEEL CHANNEL
- 13 MECHANICAL UNIT BEHIND SCREENING
- 14 ROOF DRAIN PRIMARY AND OVERFLOW PIPING TO BE ROUTED INTERNALLY AND SHALL DISCHARGE AT GRADE. AT EXISTING MASONRY CONSTRUCTION, ONE BLOCK SHALL BE REMOVED AND A STEEL PLATE ASSEMBLY INSTALLED TO CONTAIN BOTH DRAIN PIPES. STEEL SHALL BE ALLOWED TO WEATHER.



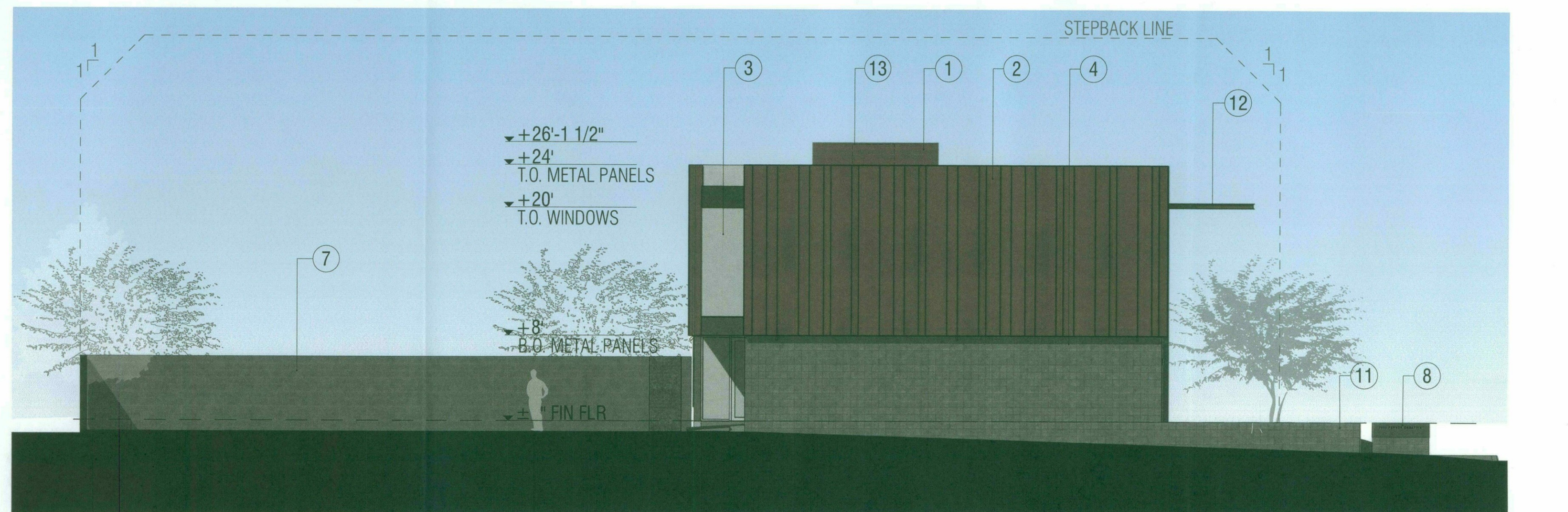
**1 NORTH ELEVATION**  
SCALE: 1/8" = 1'-0"



**2 EAST ELEVATION**  
SCALE: 1/8" = 1'-0"



**3 SOUTH ELEVATION**  
SCALE: 1/8" = 1'-0"



**4 WEST ELEVATION**  
SCALE: 1/8" = 1'-0"

city of scottsdale 52-DR-2016

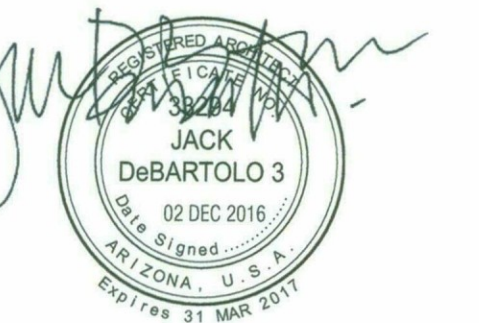
# FERVOR

FERVOR CREATIVE  
7038 E OSBORN ROAD  
SCOTTSDALE, ARIZONA 85251

© copyright 2016  
16174

**debartoloarchitects**

4450 north 12th street  
number 268  
phoenix, arizona 85014  
tel 602.264.6617  
jack3@debartoloarchitects.com

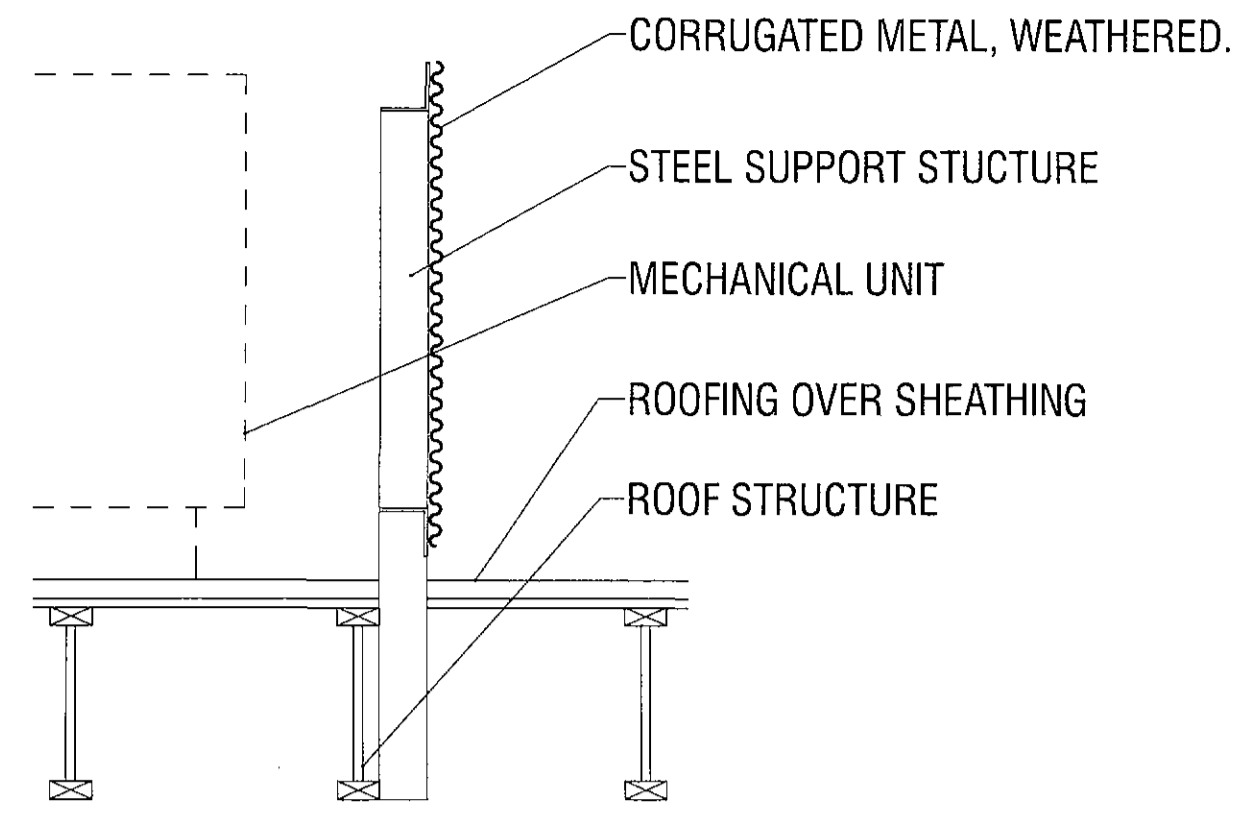


BUILDING ELEVATIONS

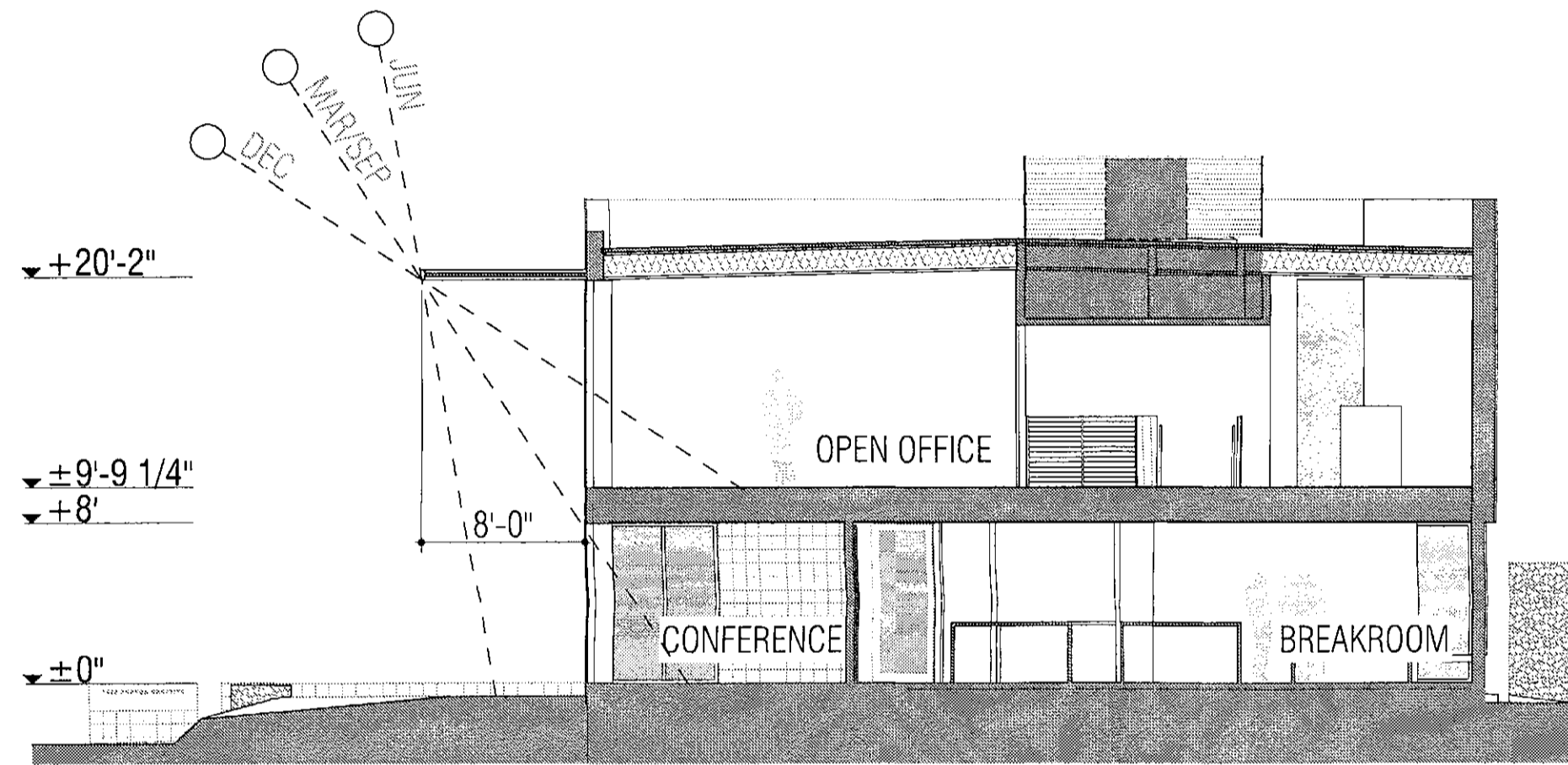
# DR1.2

STIPULATION SET  
RETAIN FOR RECORDS  
APPROVED

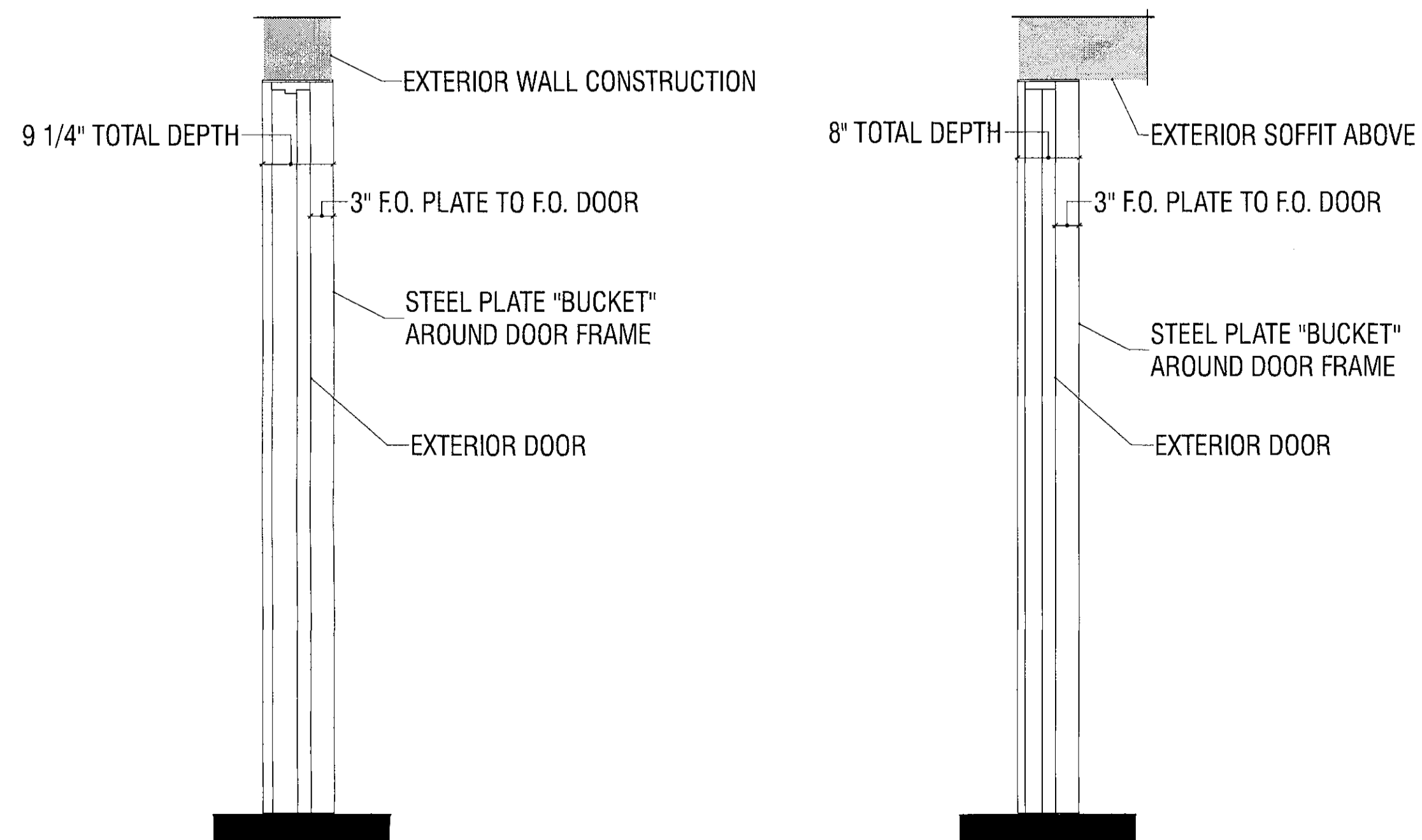
1/20/17  
DATE INITIALS



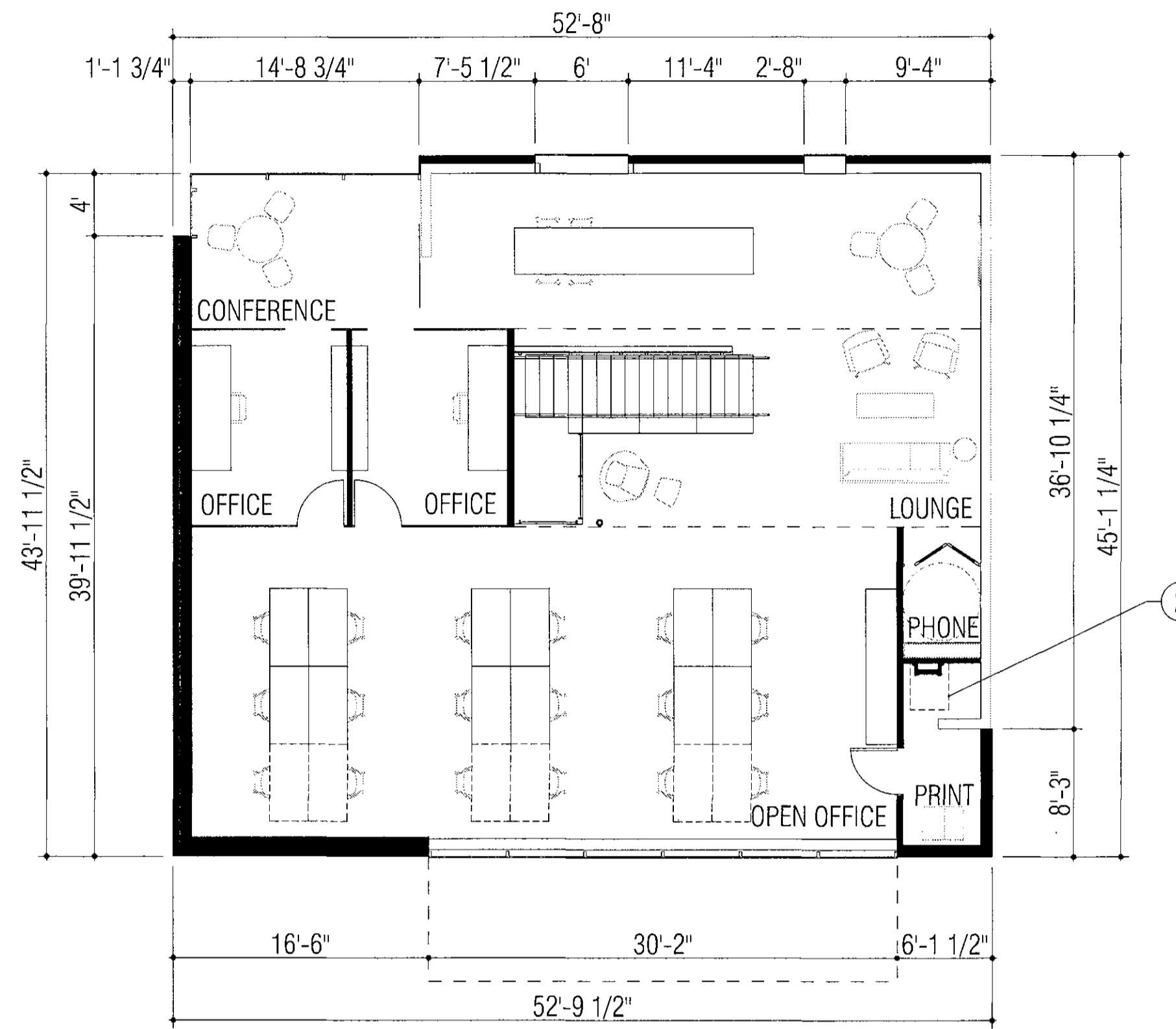
**7 MECHANICAL SCREENING**  
 SCALE: 3/4" = 1'-0"



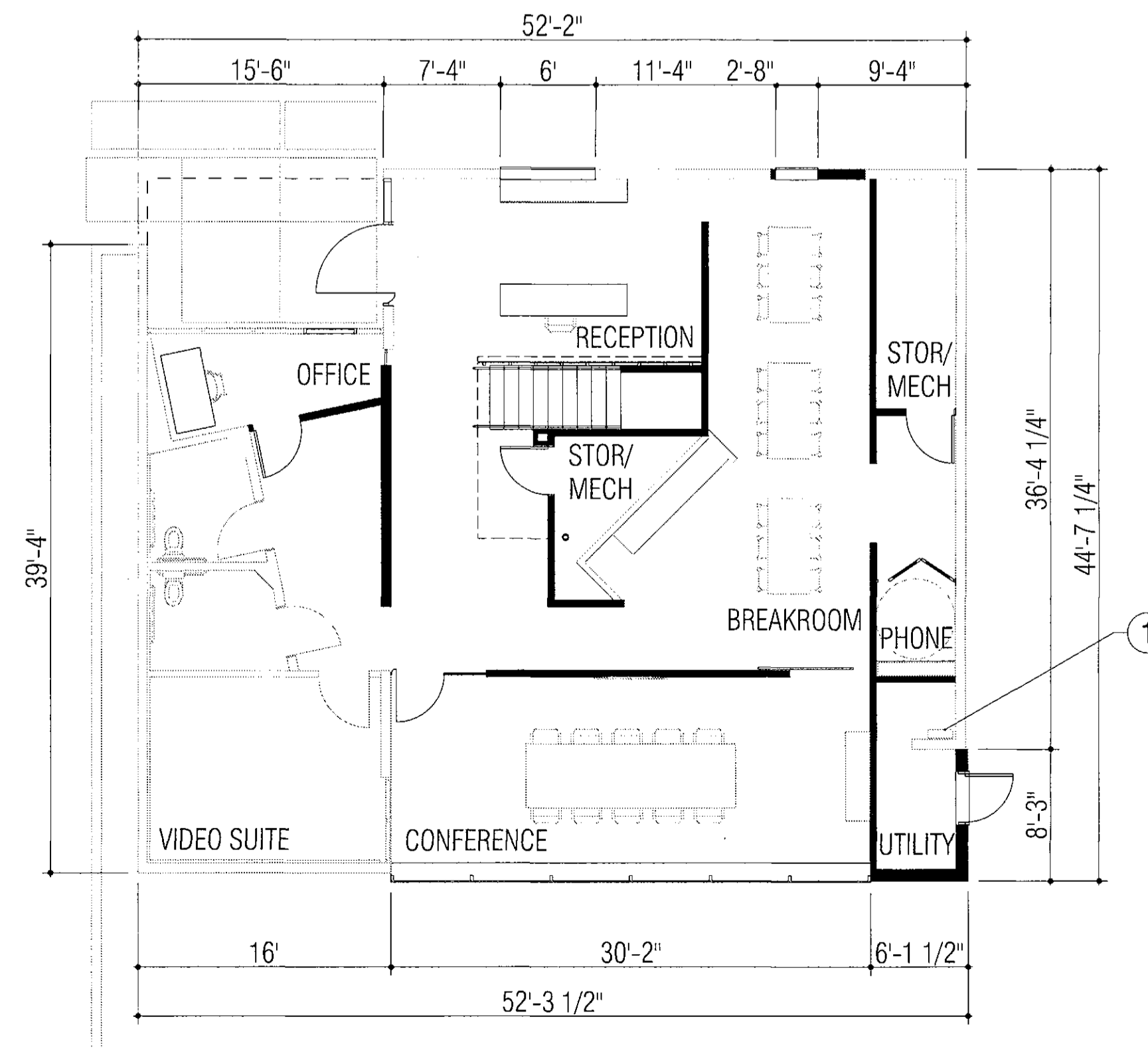
**4 NORTH-SOUTH SECTION**  
 SCALE: 1/8" = 1'-0"



**3 SECTION AT DOORS**  
 SCALE: 3/4" = 1'-0"



**2 SECOND FLOOR PLAN**  
 SCALE: 1/8" = 1'-0"



**1 FIRST FLOOR PLAN**  
 SCALE: 1/8" = 1'-0"

**FLOOR PLAN KEYED NOTES**

- 1 LOCATION OF EXISTING SES TO REMAIN IN PLACE. WHEN RENOVATION IS COMPLETE, SES WILL BE LOCATED IN AN INTERIOR UTILITY ROOM, CONCEALED FROM VIEW FROM THE EXTERIOR.
- 2 LOCATION OF ROOF ACCESS LADDER AND ROOF HATCH.

city of scottsdale 52-DR-2016

**FERVOR**

FERVOR CREATIVE  
 7038 E OSBORN ROAD  
 SCOTTSDALE, ARIZONA 85251

© copyright 2016  
 16174

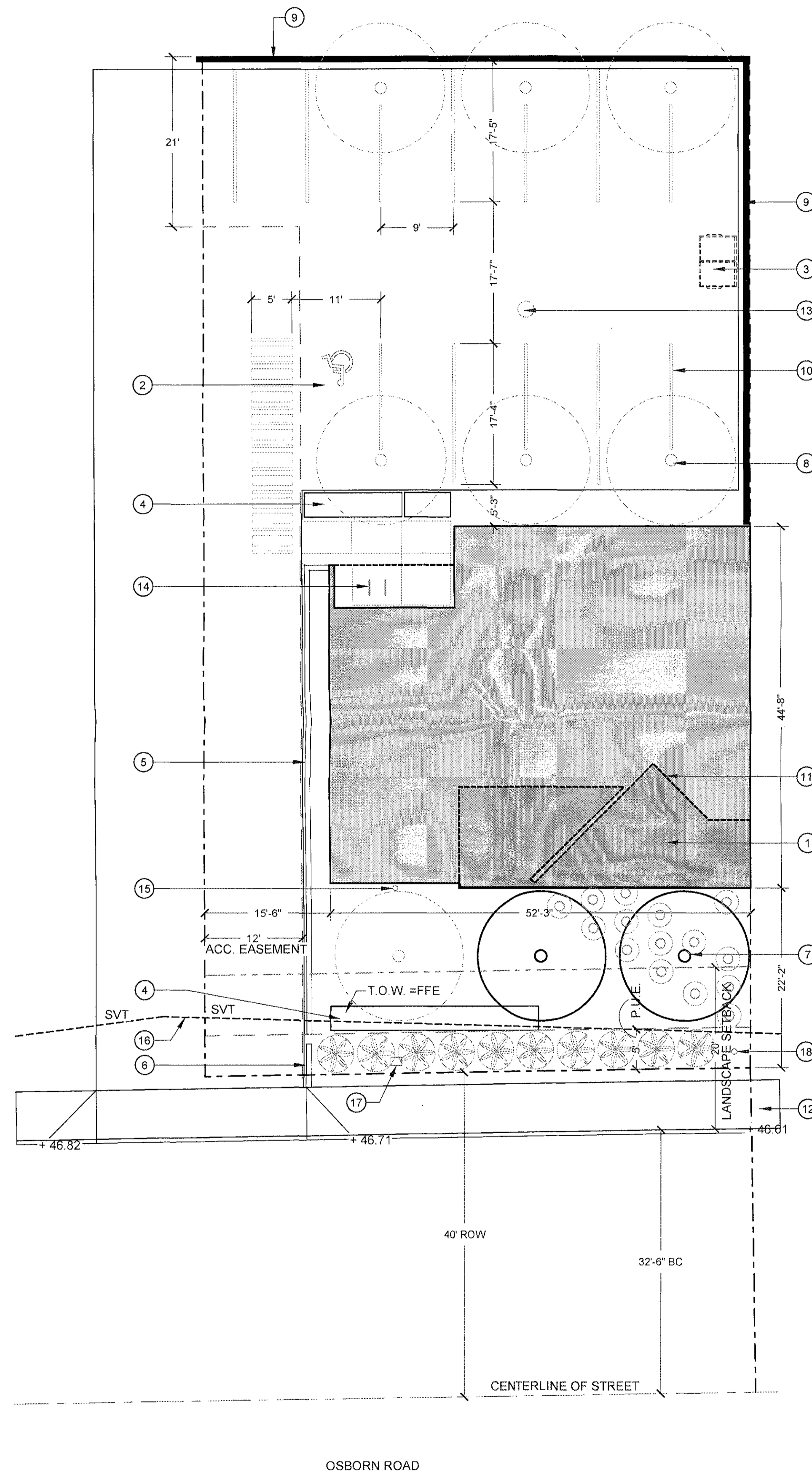
**debartoloarchitects**

4450 north 12th street  
 number 268  
 phoenix, arizona 85014  
 tel 602.264.6617  
 jack3@debartoloarchitects.com



STIPULATION SET  
 RETAIN FOR RECORDS  
 APPROVED  
 DATE: 1/20/17 INITIAL: Ba

FLOOR PLANS AND DETAILS  
**DR1.3**



VICINITY MAP  
NOT TO SCALE

KEYNOTES

- ① SHADED AREA INDICATES ADDITION TO BUILDING FOOTPRINT.
- ② VAN ACCESSIBLE PARKING SPACE TO BE RELOCATED AS SHOWN.
- ③ EXISTING LOCATION OF PRIVATELY-MAINTAINED TRASH RECEPTACLE.
- ④ EXISTING GABION WALL TO REMAIN
- ⑤ EXISTING CMU LANDSCAPE HEADER TO REMAIN.
- ⑥ LOCATION OF EXISTING BUILDING MARQUEE TO REMAIN: WEATHERED STEEL PLATE ON EXPOSED CENTER-SCORED CMU.
- ⑦ NEW TREE LOCATION, TYP.
- ⑧ EXISTING TREE TO REMAIN, TYP.
- ⑨ EXISTING 6' HIGH CMU SITE WALL.
- ⑩ EXISTING PARKING STRIPING TO REMAIN.
- ⑪ DASHED LINE INDICATES EXTENT OF EXISTING BUILDING.
- ⑫ EXISTING 6' WIDE CONCRETE SIDEWALK TO REMAIN
- ⑬ EXISTING DRYWELL TO REMAIN.
- ⑭ LOCATION OF NEW BIKE HOOP, TYP.
- ⑮ EXISTING WATER MAIN CONNECTION TO BUILDING.
- ⑯ SIGHT VISIBILITY TRIANGLE.
- ⑰ EXISTING IN-GROUND WATER METER IN BOX
- ⑱ EXISTING ABOVE-GROUND TELECOM JUNCTION BOX.

NOTE: NO NEW WORK TO BE COMPLETED IN R.O.W.

PLANT LEGEND

SYM.	BOTANICAL NAME COMMON NAME	SIZE	MIN. CAL. HT X W	QTY.
<b>TREES</b>				
⊙	EXISTING DESERT MUSEUM REMAIN IN PLACE	VARIES		7
⊙	PARKINSONIA HYBRID DESERT MUSEUM	36" BOX MULTI	2.5" CAL. 8'H X 5'W	2
<b>ACCENTS</b>				
⊙	EXISTING ALOE BARBADENSIS REMAIN IN PLACE	VARIES		15
⊙	EXISTING AGAVE SPP. REMAIN IN PLACE	VARIES		10
<b>TOPDRESS / DUST CONTROL</b>				
□	SALVAGE AND REUSE EXISTING DECOMPOSED GRANITE.			630 S.F.

*TO BE REVISED*

APPROVAL BLOCK / PRELIMINARY SUMMARY DATA	
LANDSCAPE ARCHITECT, CITY OF PHOENIX	DATE
ESTIMATED R.O.W. COST: \$0	ESTIMATED S.F. OF LANDSCAPE IN R.O.W.: 0 S.F.
MAINTENANCE BY: OWNER	ESTIMATED S.F. OF LANDSCAPE IN PARKING LOT: N/A
SQUARE FOOTAGE OF TURF: 0 S.F.	TOTAL ACRES (OR PORTIONS) OF LANDSCAPE AREA: 630 S.F.
	DATE OF PRELIMINARY SITE PLAN APPROVAL: N/A

1 LANDSCAPE PLAN  
SCALE: 1" = 10'

city of scottsdale 52-DR-2016

# FERVOR

FERVOR CREATIVE  
7038 E OSBORN ROAD  
SCOTTSDALE, ARIZONA 85251

© copyright 2016  
16174

## debartoloarchitects

4450 north 12th street  
number 268  
phoenix, arizona 85014  
tel 602.264.6617  
jack3@debartoloarchitects.com

## FLOOR associates

1425 N. First Street  
Second Floor  
Phoenix, AZ 85004



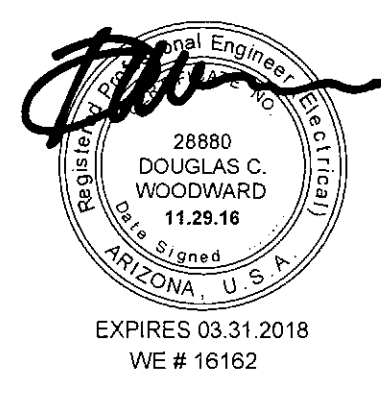
LANDSCAPE PLAN

# LS1.0

**FERVOR**  
 FERVOR CREATIVE  
 7038 E OSBORN ROAD  
 SCOTTSDALE, ARIZONA 85251

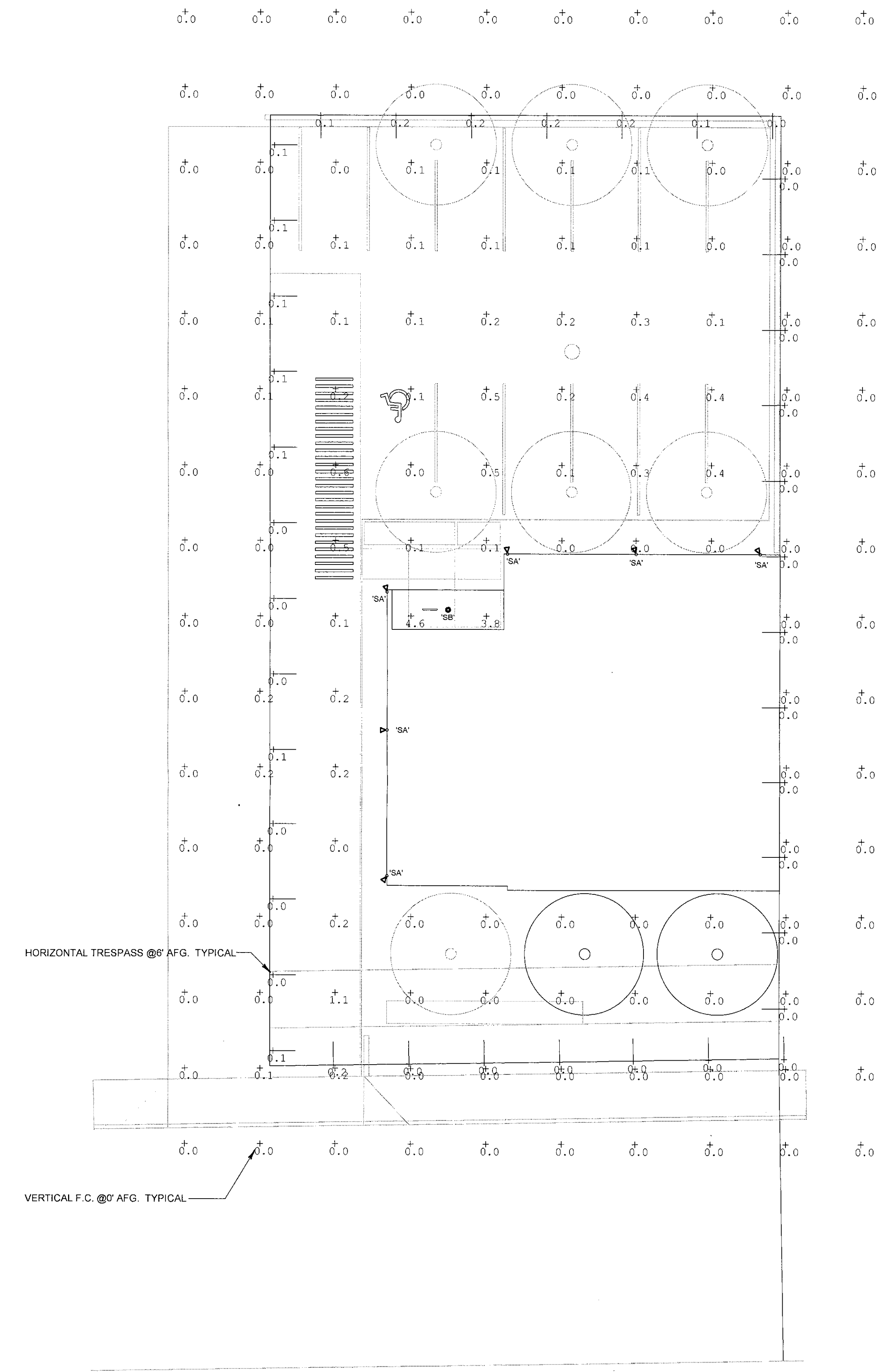
© copyright 2016  
 16174

**woodward engineering**  
 203 south smith road  
 number 101  
 tempe, arizona 85281  
 tel 480.894.4057

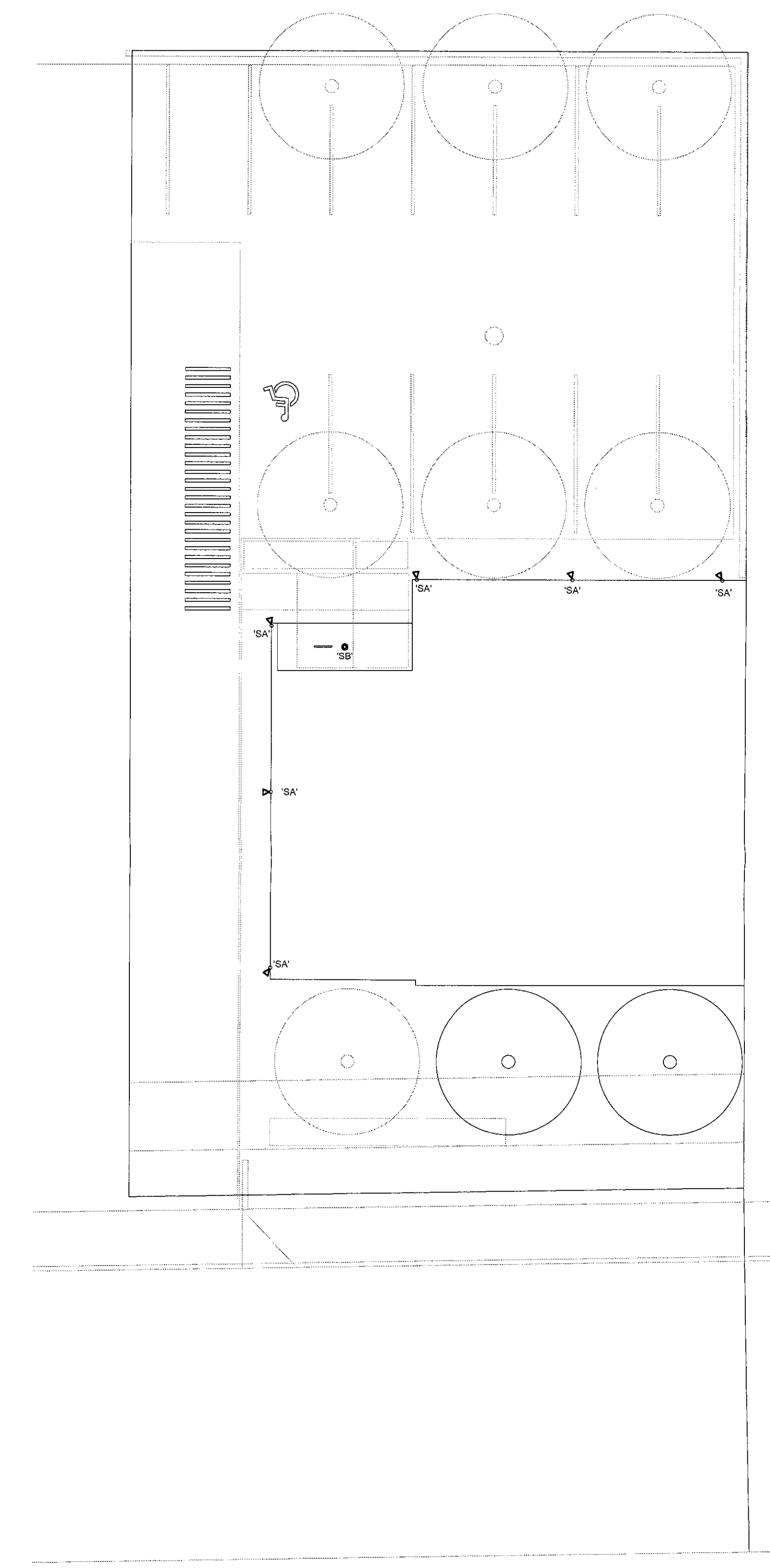


SITE LIGHTING PLAN  
 DRB

**E1.0**



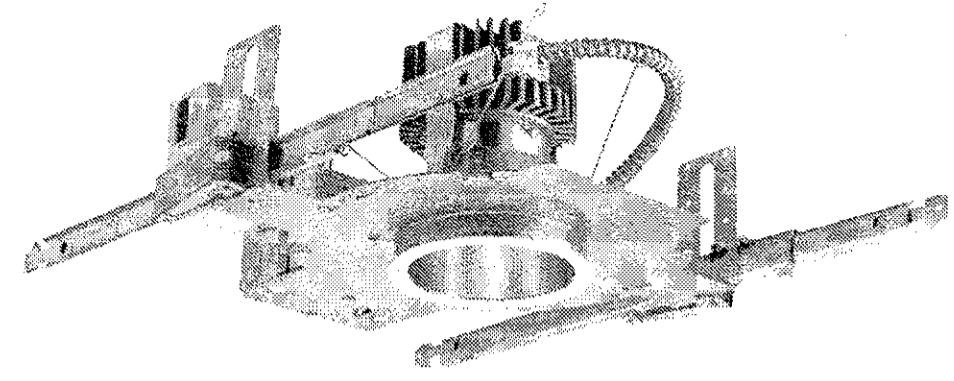
**SITE PHOTOMETRIC PLAN**  
 SCALE: 1" = 10'-0"



**SITE LIGHTING PLAN**  
 SCALE: 1" = 10'-0"

Calculation Summary							
Label	CalcType	Units	Avg	Max	Min	Avg/Min	Max/Min
Trespass. Horizontal @6' AFG. LLF=1.0	Illuminance	Fc	0.05	0.2	0.0	N.A.	N.A.
Site. Vertical @0' AFG. LLF=1.0	Illuminance	Fc	0.13	4.6	0.0	N.A.	N.A.

STIPULATION SET  
 RETAIN FOR RECORDS  
 APPROVED  
 DATE: 1/26/17 INITIALS:



Luminaire Type:  
Catalog Number  
(autopopulated):

Gotham Architectural Downlighting  
LED Downlights

**4" Evo<sup>®</sup>**  
Downlight

Solid-State Lighting



FEATURES

**OPTICAL SYSTEM**

- Self-flanged or flangeless semi-specular, matte-diffuse or specular finishing trim
- Patented Bounding Ray™ optical design (U.S. Patent No. 5,800,050)
- 45° cutoff to source and source image
- Top-down flash characteristic
- Polycarbonate lens integral to light engine

**MECHANICAL SYSTEM**

- 16-gauge galvanized steel construction; maximum 1-1/2" ceiling thickness
- Telescopic mounting bars maximum of 32" and minimum of 15", preinstalled, 4" vertical adjustment
- Toolless adjustments post installation
- Junction box capacity: 8 (4 in, 4 out) 12AWG rated for 90°C
- Light engine and driver accessible through aperture
- Injection molded mud ring included with flangeless trims. Ships separately. Installs independently of the mounting frame to reduce cracks in plaster due to vibration.

**ELECTRICAL SYSTEM**

- Fully serviceable and upgradeable lensed LED light engine
- 70% lumen maintenance at 60,000 hours
- Tested according to LM-79 and LM-80 standards
- Overload and short circuit protected
- 2.5 SDCM; 85 CRI typical, 90+ CRI optional

**LISTINGS**

- Fixtures are CSA certified to meet US and Canadian standards; wet location, covered ceiling

**WARRANTY**

- 5-year limited warranty. Complete warranty terms located at: [www.acuitybrands.com/CustomerResources/Terms\\_and\\_conditions.aspx](http://www.acuitybrands.com/CustomerResources/Terms_and_conditions.aspx)

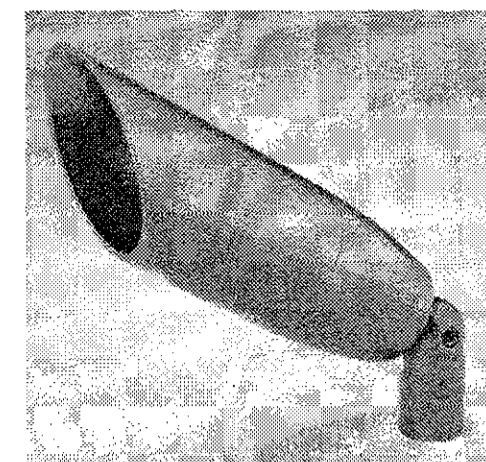
Note: Actual performance may differ as a result of end user environment and application. All values are design or typical values, measured under laboratory conditions at 25° C.

A+ Capable options indicated by this color background.

EXAMPLE: EVO 35/10 4AR MWD LSS MVOLT EZ1

Series	Color temperature	Nominal lumen values	Aperture/Trim color	Trim Style	Distribution	Finish	Voltage
EVO	27/ 2700 K	07 750 lumens	4AR Clear	(blank) Self-flanged	MD Medium (0.9 s/mh)	LSS Semi-specular	MVOLT
	30/ 3000 K	10 1000 lumens	4PR Pewter	FL Flangeless	LD Matte-diffuse	LD	120
	35/ 3500 K	15 1500 lumens	4WTR Wheat		MWD Medium wide (1.0 s/mh)	LS Specular	277
	40/ 4000 K	20 2000 lumens	4GR Gold		WD Wide (1.2 s/mh)		347 <sup>2</sup>
		25 2500 lumens	4WR <sup>1</sup> White				
		30 3000 lumens	4BR <sup>1</sup> Black				
			4WRAMF <sup>1</sup> White anti-microbial				

Driver <sup>3</sup>	Options
EZ10 eldoLED 0-10V ECOdrive. Linear dimming to 10% min.	SF Single fuse. Specify 120V or 277V.
EZ1 eldoLED 0-10V ECOdrive. Linear dimming to 1% min.	TRW <sup>6</sup> White painted flange
EZB eldoLED 0-10V SOLOdrive. Logarithmic dimming to <1%.	TRBL <sup>7</sup> Black painted flange
EDAB eldoLED SOLOdrive DALI. Logarithmic dimming to <1%.	EL <sup>8</sup> Emergency battery pack with integral test switch
EDXB eldoLED POWERdrive DMX with RDM (remote device management). Square Law dimming to <1%. Includes termination resistor. Refer to DMXR Manual.	ELR <sup>8</sup> Emergency battery pack with remote test switch
EXA1 XPoint Wireless, eldoLED 0-10V ECOdrive. Linear dimming to 1%. Refer to XPoint tech sheet.	NPS80EZ <sup>5</sup> nLight <sup>®</sup> dimming pack controls 0-10V eldoLED drivers.
EXAB XPoint Wireless, eldoLED 0-10V SOLOdrive. Logarithmic dimming to <1%. Refer to XPoint tech sheet.	NPS80EZER <sup>5,9</sup> nLight <sup>®</sup> dimming pack controls 0-10V eldoLED drivers. ER controls fixtures on emergency circuit.
ECOS2 <sup>4,5</sup> Lutron <sup>®</sup> Hi-Lume <sup>®</sup> 2-wire forward-phase driver. Minimum dimming level 1%. Minimum lumen 1000/Maximum lumen 3000.	
ECOS3 <sup>4,5</sup> Lutron <sup>®</sup> Hi-Lume <sup>®</sup> 3-wire or EcoSystem <sup>®</sup> dimming driver. Minimum dimming level 1%. Minimum lumen 1000/Maximum lumen 4500.	

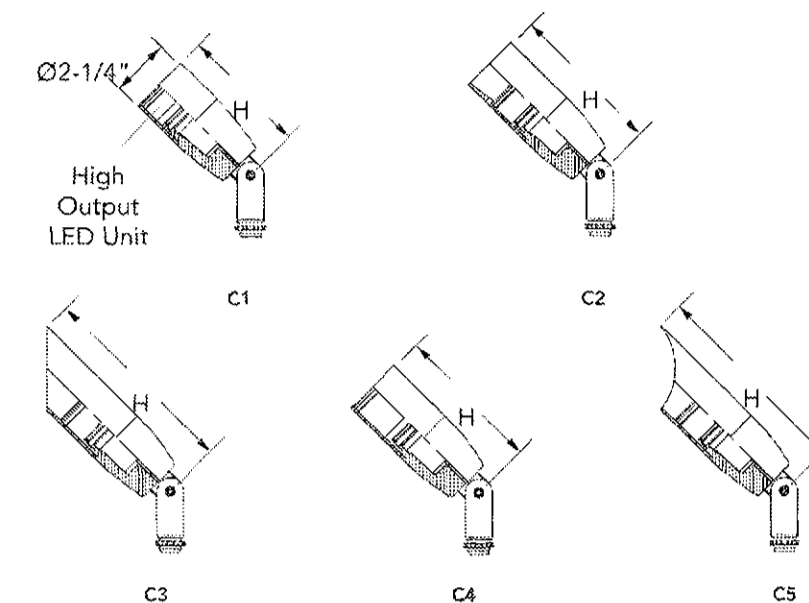


**ASPEN LED**  
WINSCAPE<sup>®</sup> 12V LED16



Specifications

D:	# Mounting
H:	4-3/4" (121mm) w/C1 5-3/4" (146mm) w/C2 7-5/8" (194mm) w/C3 5-1/2" (140mm) w/C4 7-5/8" (194mm) w/C5



CATALOG NUMBER	
NOTES	
TYPE	'SA'

**DESCRIPTION**

The Aspen series accent lights are suitable for a variety of mounting applications including ground, wall, tree, sign and architectural accents. Suitable for wet locations.

**ORDERING INFORMATION**

EXAMPLE: ASPEN SS 3LED16 30K 12 NSP WSL KM BR5

ASPEN	Material <sup>*</sup>	Source <sup>*</sup>	Color/Temperature <sup>*</sup>	Voltage <sup>*</sup>	Distribution <sup>*</sup>	Lens <sup>*</sup>	Mounting <sup>*</sup>
ASPEN	A Aluminum	3LED16	30K	121	NSP 10° Narrow Spot	FLC Flat Clear	KM Knuckle
	BR Brass		40K	120 <sup>2</sup>	NFL 25° Narrow Flood	WSL Watershed	350R 350° rotational knuckle
	SS Stainless Steel		50K		FL 40° Flood		
			AMB Amber (591nm)				

Mounting Accessories <sup>*</sup>	Options <sup>*</sup>	External Caps <sup>*</sup>	Finish <sup>*</sup>
<b>Independent Mounting</b>	<b>Power Boxes with 15W Electronic Transformers</b>	<b>Internal Louver</b>	<b>All Material</b>
JBA Aluminum J-Box	PM60B <sup>2</sup> Power Mount	IHL Honeycomb Louver	BL Black
JBB Bronze J-Box Architectural	PMBR60B <sup>2</sup> Brass Power Mount	<b>Internal Accessory</b>	BRZ Satin Bronze w/ Satin Clear
ARJB J-Box, Aluminum 12"-48"	WP2J <sup>2</sup> Wall Peck over recessed J-Box	L1 Prismatic Lens	BRS Bronze Smooth
CNS 5" round canopy	WP2S <sup>2</sup> Surface Mount Wall Pack	L2 Linear Spread Lens	NAT Natural Brass w/ Satin Clear
CNSBR 5" round canopy, brass		L3 Softening Lens	POL Polished Brass w/ Glass Clear
CNS5S 5" round canopy, stainless		<b>Internal Filters</b>	Stainless Only <sup>8</sup>
WMC Wall Mount Cover	<b>Stems</b>	FA Amber	BRSS Brushed Stainless Steel
WMSA Wall Mount with Splice Access	S3 <sup>3</sup> 3" Stem	FG Green	DBL Black Smooth
STK Mounting Stake	S6 <sup>3</sup> 6" Stem	FGD Green Dichroic	DDB Designer Bronze
TRA Tree Mounted J-Box, Aluminum	S <sup>3</sup> 12" - 24" stems, available in 6" increments	FLB Light Blue	DNA Natural Aluminum
TRB Tree Mounted J-Box, Bronze	S3BR <sup>3</sup> 3" Stem Brass	FM Mercury Vapor	NBS <sup>7</sup> Natural Bronze Smooth
TRAS Tree Mounted J-Box with Aluminum mounting strap, available with 1-4 JBoxes per strap	S6BR <sup>3</sup> 6" Stem Brass	FMB Medium Blue	VET Verde Textured
TRBS Tree Mounted J-Box with Bronze mounting strap, available with 1-4 JBoxes per strap	S <sup>3</sup> BR <sup>3</sup> 12" - 24" stems, available in 6" increments	FMBD Medium Blue Dichroic	WH White Textured
PM60A Adjustable Post Mount	<b>Extended Arms<sup>3</sup></b>		WHS White Smooth
PMBR60A Adjustable Post Mount - Bronze	EA <sup>4</sup> 12", 24" or 36"		CF Custom Finish
PM60C Post Mount with Conduit	EA45 <sup>4</sup> 45", 12", 24" or 36"		
PMBR60C Post Mount with Conduit - Bronze	EA90 <sup>4</sup> 90", 12", 24" or 36"		
PM60D Post Mount with Open Bottom			
PMBR60D Post Mount with Open Bottom - Bronze			

- \*Required Fields
- Notes:
- 1 Remote transformer required.
  - 2 120 volt only available with power boxes, fixture itself is 12 volt.
  - 3 Aluminum stems only compatible with A material, not compatible with JBB, TRB, \_TRBS, PMBR60A, PMBR60B, PMBR60C, PMBR60D, CNSBR or CNS5S.
  - 4 Brass stems only compatible with BR material and JBB, TRB, \_TRBS, PMBR60A, PMBR60B, PMBR60C or PMBR60D.
  - 5 Extended arms only available with WMSA
  - 6 Up to 3 optional items can be specified.
  - 7 NBS paint uses specialty pigments to give a natural appearance that may vary by fixture.
  - 8 Brass only and Stainless only finishes not available with mounting accessories.

NOTE: Hydrel Reserves The Right To Modify Specification Without Notice. Any dimension on this sheet is to be assumed as a reference dimension. \*Used for information purposes only. It does not govern manufacturing or inspection requirements." (ANSI Y14.5-1973)



9144 Deering Avenue, Second Floor • Chatsworth, CA 91311 • www.hydrel.com ©2014-2015 Acuity Brands Lighting, Inc.  
Phone: 866.533.9901 • Fax: 866.533.5291 Rev. 12/15/15 ASPEN\_LED

city of scottsdale 52-DR-2016

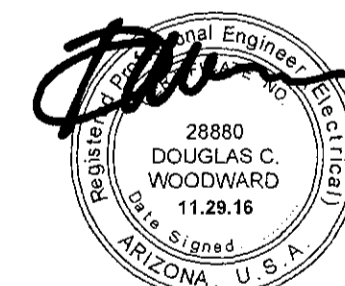
**FERVOR**

FERVOR CREATIVE  
7038 E OSBORN ROAD  
SCOTTSDALE, ARIZONA 85251

© copyright 2016  
16174

**woodward engineering**

203 south smith road  
number 101  
tempe, arizona 85281  
tel 480.894.4057



EXPIRES 03.31.2018  
WE # 16162

**FIXTURE CUTSHEETS**  
DRB

**E1.1**

STIPULATION SET  
RETAIN FOR RECORDS  
APPROVED

DATE: 1/20/17 INITIALS: [Signature]