

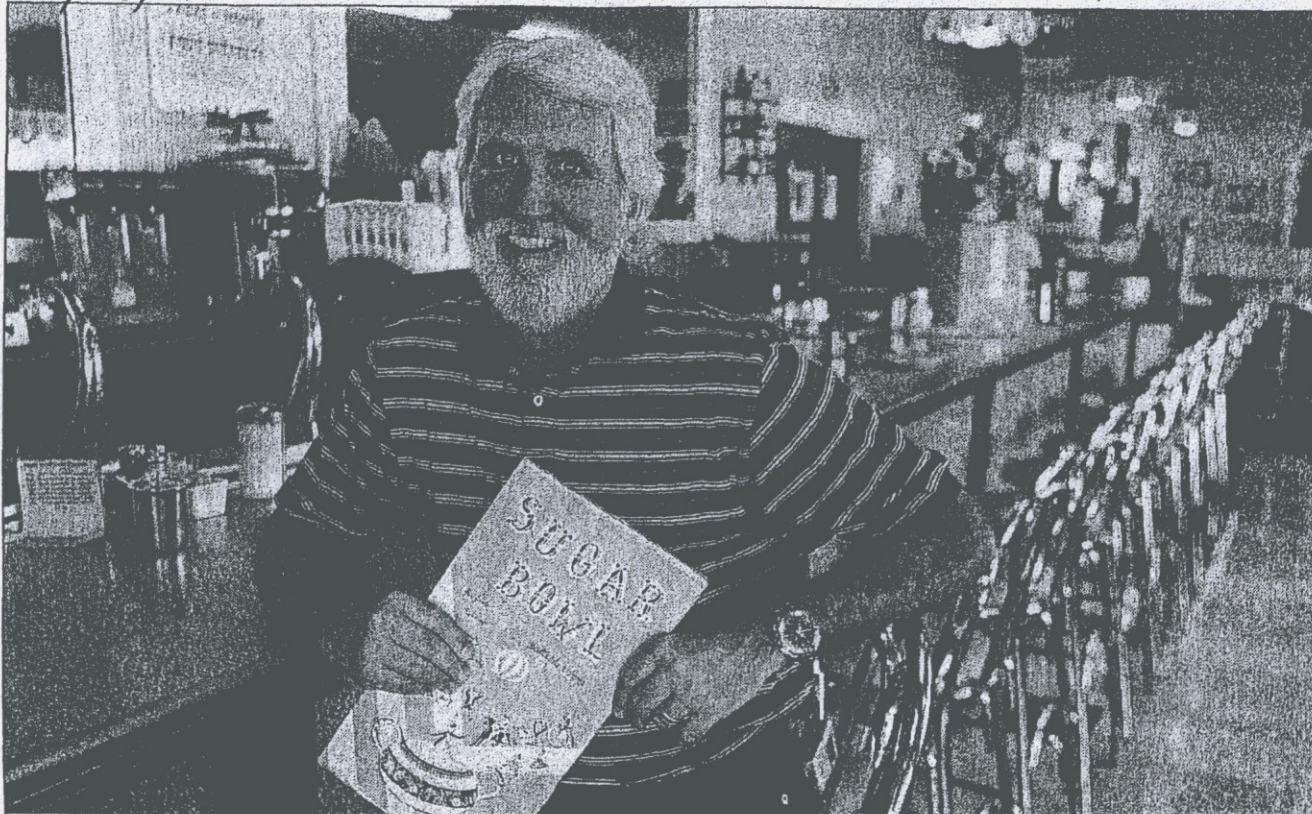
Newspaper Articles

Special Reports

- **Traffic Impact Study from Applicant**
- **Drainage Reports**
- **Archeology**
- **Miscellaneous Reports**

Photos

Other



PAUL O'NEILL, TRIBUNE

BOWLED OVER: Owner Carroll Huntress sits at the counter of the Sugar Bowl, one of three buildings in downtown Scottsdale being considered for addition to the city's historic register.

Scottsdale's sweet spot

Sugar Bowl, 2 other sites considered for city historic register

By ERIN REEP
TRIBUNE

Scottsdale High School sophomore Kit Russell was nervous on his first date with fellow student Michele Prosnier — and wasn't sure if he should sit beside her on their date.

It was a hot July night in 1975. Russell took Prosnier for ice cream at the Sugar Bowl in Scottsdale after a drive-in movie.

Settling into a small two-seat booth in a corner of the eatery, Russell couldn't decide if he should sit beside his date, he said. Now married with three boys, "we still argue over whether I sat next to her or across from her," Russell said.

The Russells retell the story during family trips to the Sugar Bowl. The ice cream parlor hasn't changed much: It is still decorated in

pink, still resembles an old-fashioned ice cream parlor and cafe, and still serves the same classic ice cream concoctions as it did on its first menu — such as root beer floats and banana splits.

The Sugar Bowl is one of three buildings in downtown Scottsdale being considered for addition to the city's historic register, currently at 13 sites. The Historic Preservation Commission on Monday will hold its second of two open houses informing the public about adding the Sugar Bowl, along with the Pink Pony restaurant and the Simonson Building, to the list.

The Sugar Bowl's decor includes pink booths large enough for families to sink into, an old-fashioned bar with tall pink stools and an original cashier's window at the door.

Western Motor Service designed the building in 1950 in line with Scottsdale's Western atmosphere, according to information compiled by city historic preservation officer Debbie Abele and her staff.

Open house

What: Informational open house on three historic buildings nominated for Scottsdale Historic Register

When: 11 a.m. to 2 p.m. Monday

Where: Our Lady of Perpetual Help Mission Church, 3821 N. Brown Ave., Scottsdale

Information: Call (480) 312-2523

Jack Huntress of Paradise Valley opened the Sugar Bowl in 1958 as a family-oriented alternative to restaurants that served alcohol. A retired Chrysler marketing and sales representative from Detroit, Huntress was active in his community and served 10 years as mayor of Paradise Valley, said Carroll Huntress, Jack's nephew and current Sugar Bowl owner. When Jack turned 70 in 1980, Carroll moved to Arizona to help run the business. In 1985, he bought it, with Jack Huntress' family retaining ownership of the building, Carroll said. Jack died in 1998.

Drawings from local commercial artist Pat Thompson and cartoonist Bill Keane hang throughout the restaurant. Thompson designed the Sugar Bowl's first menu cover, which is still used today. Keane, a longtime friend of the Huntress family and frequent customer, featured the Sugar Bowl in his "Family Circus" cartoons.

Three public meetings are to be held for consideration of adding the three buildings to the historic register. On Feb. 9, the issue goes before the Historic Preservation Commission, which will review the information compiled by Abele and her staff. Separately the Planning Commission will look at creating a zoning overlay with historic preservation status.

The City Council will then consider the case, taking into account recommendations of both commissions. The process should be completed by May, Abele said.

CONTACT WRITER: (480) 970-2312
or ereep@aztrib.com

1/24/09

Pink Pony: A Scottsdale jewel

Downtown eatery
to be considered for
city's historic list

By ERIN REEP
TRIBUNE

Although he died in December 2002, Charlie Briley is very much alive in the hearts and minds of his friends and family and in the Old Town Scottsdale restaurant he made legendary.

The Pink Pony, a steakhouse synonymous with spring training and baseball greats who passed through the Valley, was made great by Briley. Some of his closest friends came together at the Pony to remember Briley in celebration of what would have been his 88th birthday three months after his death in March 2003.

At the party, Charlie's wife Gwen saw to it that his ashes were given to baseball team owners and players to be scattered on 20 baseball fields



PHOTOS BY RALPH FRESO, TRIBUNE

PINK PONY DECOR: Jerseys from professional baseball players hang on the walls inside the Pink Pony in Scottsdale.

across the country.

The Pink Pony is being considered for addition to the Scottsdale Historic Registry. It hasn't changed much over the years — remaining famous for its Western style

and baseball-affiliated clientele. Gwen Briley now runs the restaurant with her son Kenneth Brown.

Caricatures of famous players and sports stars that visited the Pony, such as Dizzy Dean and Billy Martin, line the walls. Jerseys of slugger Sammy Sosa and pitcher Fergie Jenkins hang above the booths and tables. The dining room is dark; black booths adorned by small lamps beckon diners to sit and enjoy the history.

Baseball greats, including Martin, Ty Cobb, Ted Williams and Joe DiMaggio, visited the Pony. Other socialites graced the Pony, including Robert Wagner and Natalie Wood on their wedding night. Sens. Hubert Humphrey and Joseph McCarthy and Clark Gable ate at the Pony as well.

An intimate round booth in

Open house

What: Informational open house on three historic buildings nominated for Scottsdale Historic Register

When: 11 a.m. to 2 p.m. Monday

Where: Our Lady of Perpetual Help Mission Church, 3821 N. Brown Ave., Scottsdale

Information: Call (480) 312-2523

corner is known as Gene Autry's booth, in tribute to the film star and former owner of the Anaheim Angels, who was a great friend of the Pony, Gwen Briley said.

"He'd come in and say, 'Miss Gwen, would you take my Stetson?' and I'd take it and put it in the back office," she said.

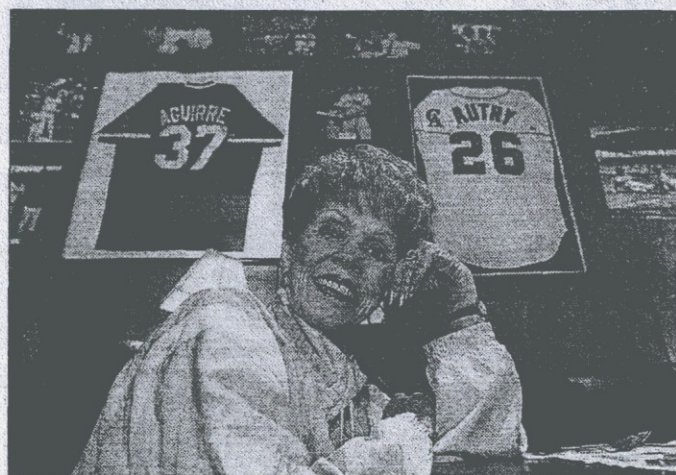
The Pink Pony moved into the building at 3831 N. Scottsdale Road in 1970; it opened in

of Scottsdale Road and Main Street in the former Whitey's Cafe, according to city historic preservation officer Debbie Abele.

The restaurant was founded by Ping Bell as Ping's and later sold to Claudia Ogden who renamed it the Pink Pony. She sold it to Charlie Briley for \$50,000 in a lease-to-buy option in 1950.

The Pony's current site was built as a new Sprouse-Reitz variety store in 1954.

The Scottsdale Historic Preservation Commission is making the case to add the the Pink Pony, along with the Sugar Bowl and the Weirich-Westernaire Building (also known as the Simonson Building), to the city's historic register.



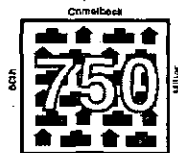
AUTRY'S BOOTH: Pink Pony owner Gwen Briley sits in a booth often occupied by the late Gene Autry as a jersey of the former

CONTACT WRITER:
(480) 970-2312

Overview of Two HP Zoning Cases

Request to place HP overlay zoning
on 2 downtown properties and to
place properties on the Scottsdale
Historic Register

SUMMARY OF THE SURVEY PROCESS USED FOR DOWNTOWN SURVEY



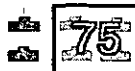
STEP 1. Study entire 1-square mile
area of downtown



STEP 2. Eliminate residential uses



STEP 3. Divide into four groups
by age, theme



STEP 4. Reduce to 75 potential



STEP 5. Further evaluation of
remaining - integrity,
significance, changes

Criteria for Designation

Properties may be recognized as significant if they are:

- Associated with historic events important to the development of Scottsdale, and/or
- Associated with significant persons, and/or
- Embody distinctive characteristics, work of a master, or possess high artistic value, and/or
- Yields prehistoric/historic information, and
- Possesses integrity of location, design, setting, materials, workmanship, feeling, and association.

20-ZN-2003 Sugar Bowl Historic Property Overlay

Planning Commission (PC)
Public Hearing
April 14, 2004

Request

■ Establishment of HP Overlay Zoning

- ◆ 3935 & 4005 N. Scottsdale Road from Central Business District Downtown Overlay (C-2 DO) to Central Business District, Downtown Overlay, Historic Property (C-2 DO HP) on .13 acres

■ Initiated by HPC

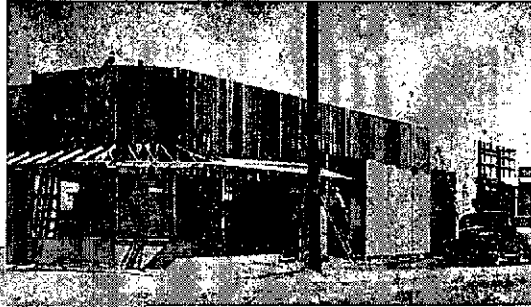
- ◆ November 13, 2003



3935 & 4005 N. Scottsdale Road

20-ZN-2003

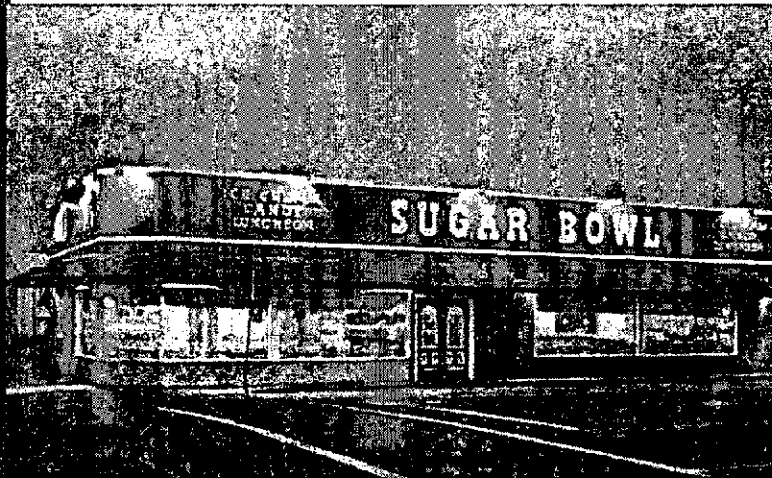
History



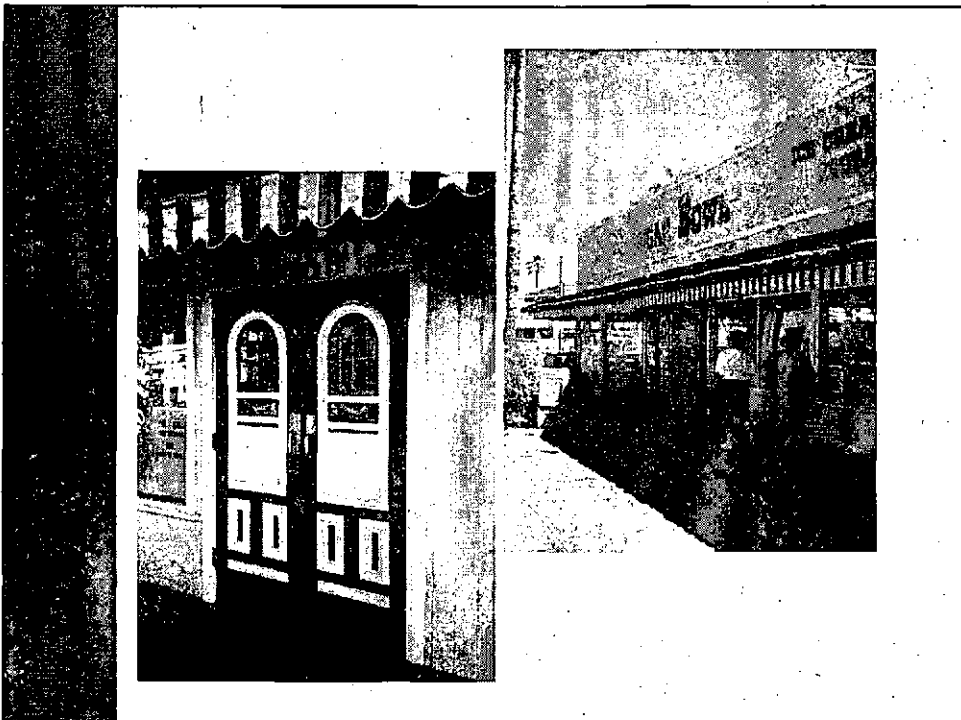
Built in 1950



Originally the Western Motor Service
Architecture designed in Old West style



1958 conversion to Sugar Bowl Ice Cream
Parlor and retail space





Significance

- Excellent example of City's postwar development as a tourist destination
- Western style architecture
- Associated with notable downtown business owner
- High integrity

20-ZN-2003

Recommendations

- Historic Preservation Officer recommends approval of HP zoning and placing on Scottsdale Historic Register
 - ◆ Due to historical and architectural significance for designation and its important contribution to Scottsdale's development as an arts and tourist destination.
- Historic Preservation Commission recommends approval, 2/12/04 & 4/8/04
- Property owners support designation

19-ZN-2003

Pink Pony Historic Property Overlay

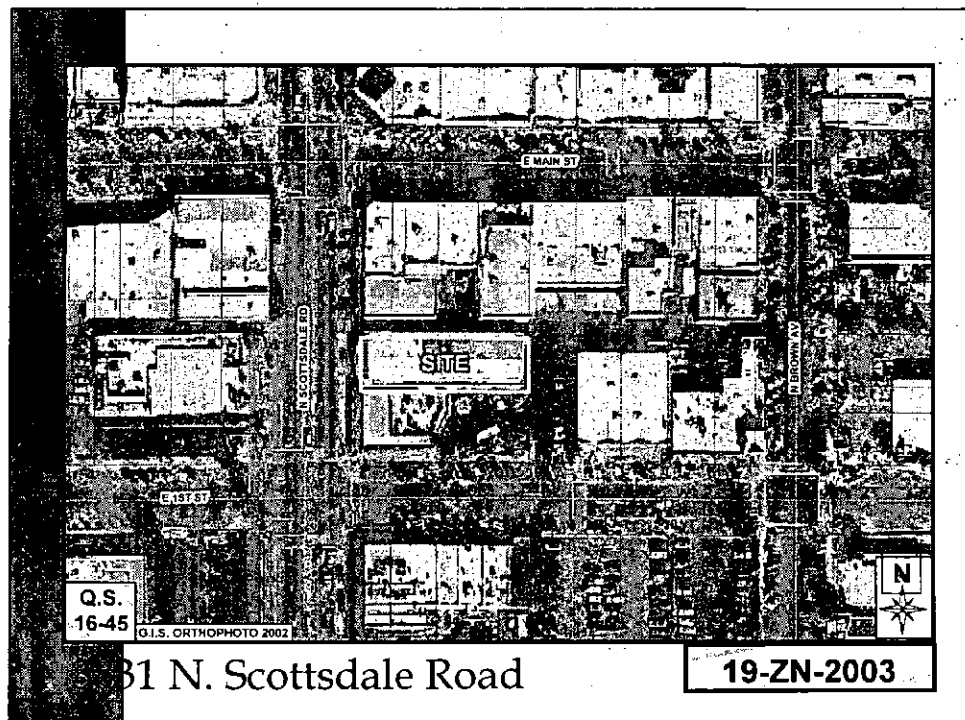
Planning Commission (PC)

Public Hearing

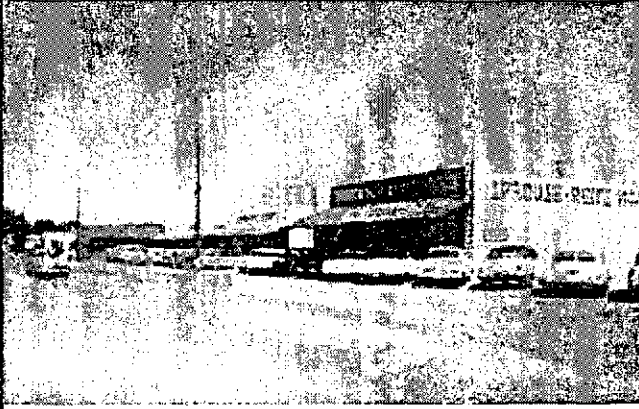
April 14, 2004

Request

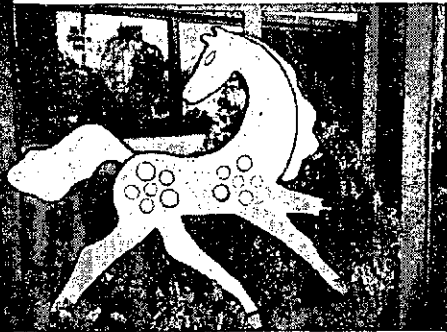
- Establishment of HP Overlay Zoning
 - ◆ 3831 N. Scottsdale Road from Central Business District Downtown Overlay (C-2 DO) to Central Business District, Downtown Overlay, Historic Property (C-2 DO HP) on .2 acres
- Initiated by HPC
 - ◆ November 13, 2003



History

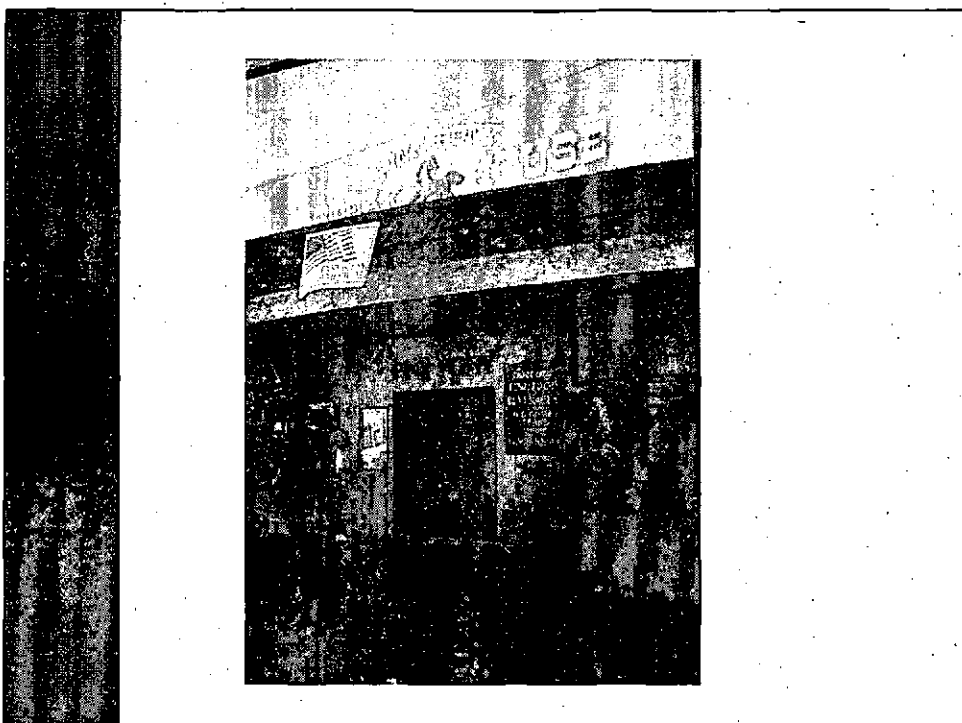
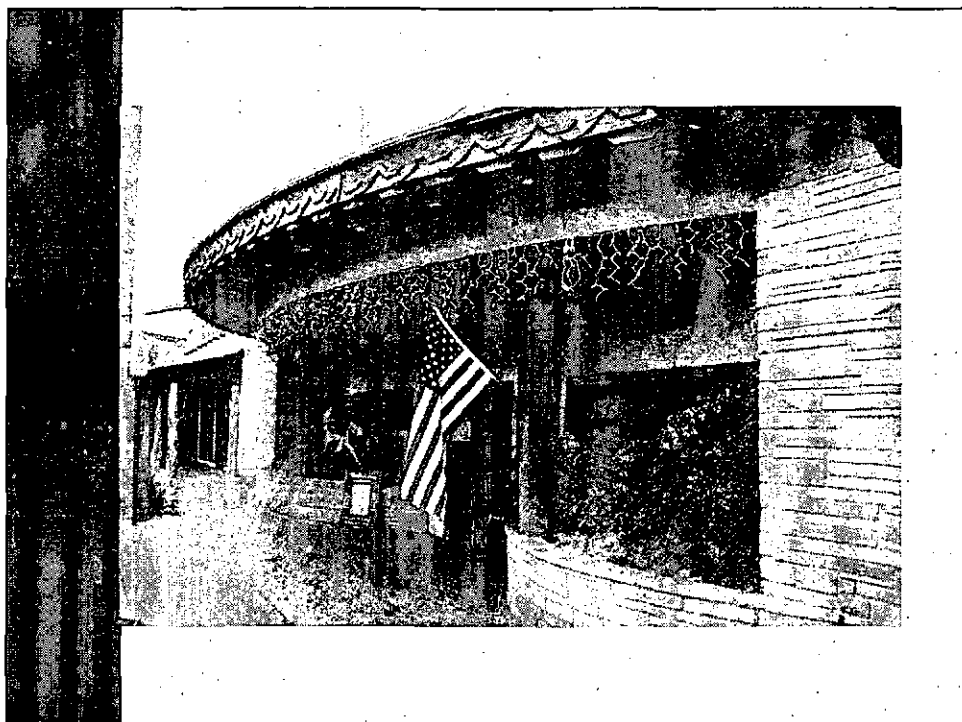


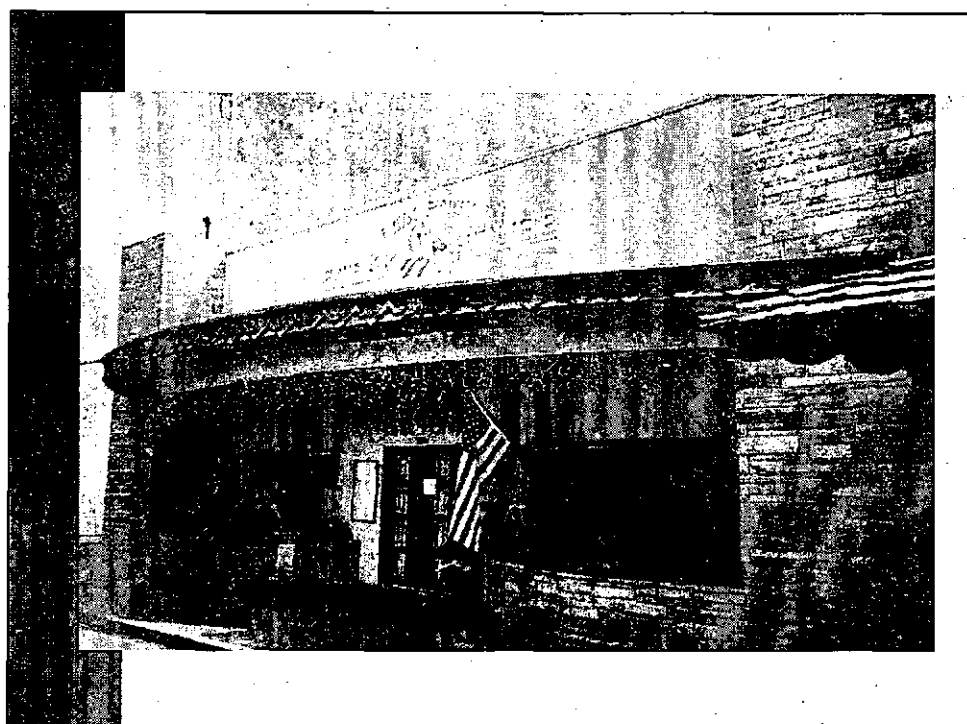
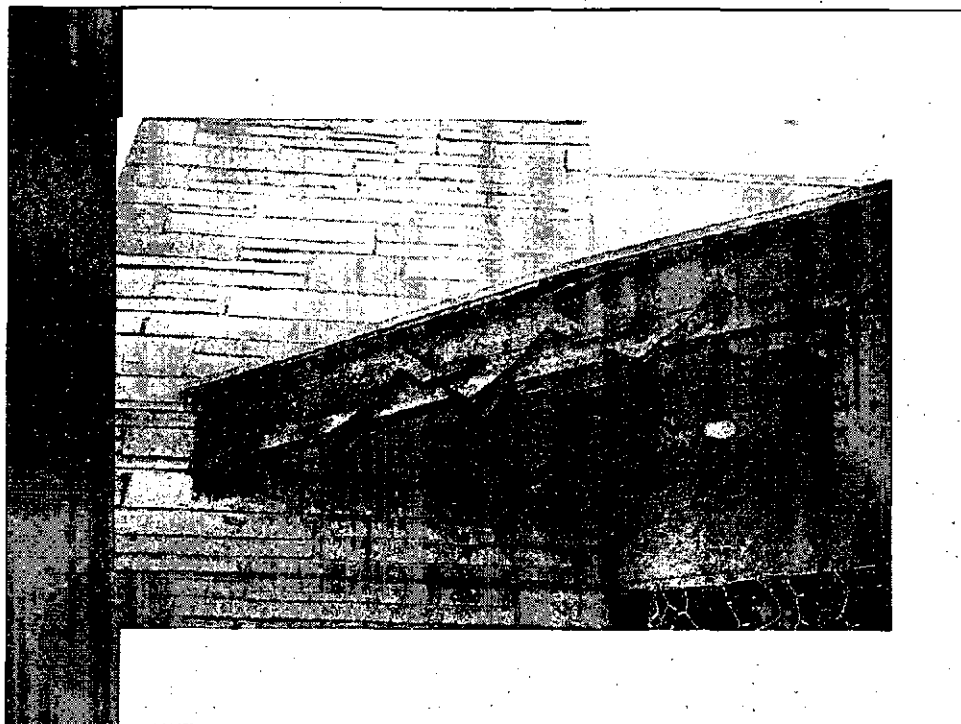
Built in 1954 as Sprouse-Reitz Drugstore



Pink Pony relocates to
this location in 1970







Significance

- Represents important period of history when Scottsdale became Baseball Spring Training and tourist destination
- Associated with early business leader
- Architecture illustrates transition from Old West to Modern Southwest style
- High integrity

19-ZN-2003

Recommendations

- Historic Preservation Officer recommends approval of HP zoning and placing on Scottsdale Historic Register
 - ◆ Due to historical and architectural significance for designation and its important contribution to Scottsdale's development as an arts and tourist destination.
- Historic Preservation Commission recommends approval, 2/12/04 & 4/8/04
- Property owner supports designation