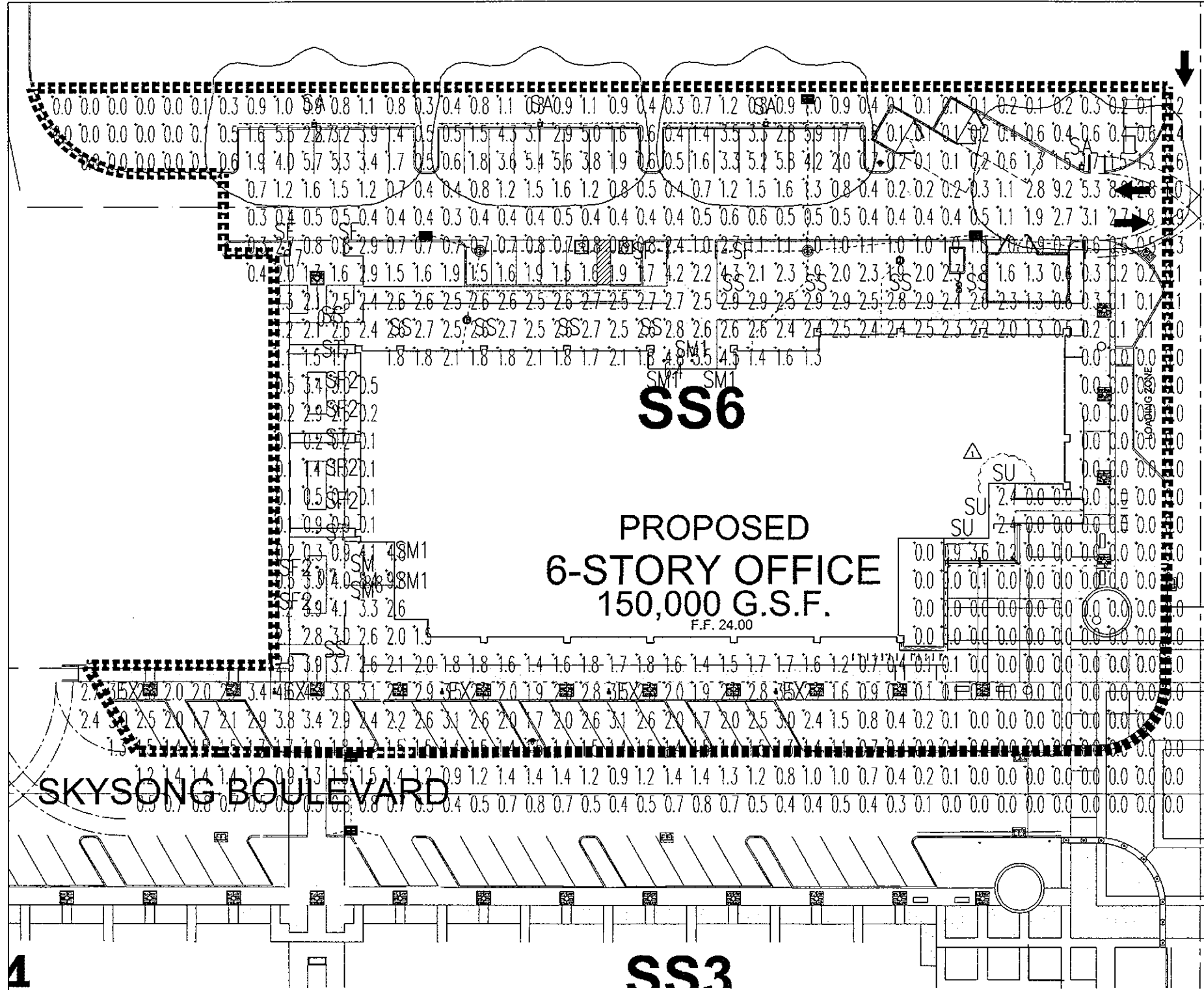


Final Plans



SITE PHOTOMETRIC PLAN - BLDG VI
SCALE: 1"=20'-0"

LUMINAIRE SCHEDULE									
Symbol	Label	Qty	Catalog Number	Description	Lamp	File	Lumens	LUF	Watts
○	SM	4	PORTFOLIO P06H126 62H C E	5' DOWNLIGHT	ONE 25 WATT CFL	P06H113E-62HC_130T11	1800	0.81	28
○	SM1	3	PORTFOLIO P06H126 62H C E	5' DOWNLIGHT	ONE 25 WATT CFL	P06H113E-62HC_130T11	1800	0.81	28
□	EA	5	ESTIMATE FOR EXISTING SITE LIGHTING	ESTIMATE FOR EXISTING SITE LIGHTING	150 WATT PULSE-START CLEAR E8-17 HORIZONTAL BURN	ICS-150-WP-XX-SSan	14000	0.72	185
□	SA	4	VISIONAIRE PLUS-1-1-13 72LC 3 HK UHY AM BK LS / 555 155 HW 2.5" BASE	ARCHITECTURAL POLE MOUNTED AREA LIGHT MOUNTED @ 15' AFG	4000K LED 7425 LUMENS	ame_2_1_13_7_2LC_3_KR.ES	Absorbed	0.90	80.27
○	SF	4	AMP-6L7013 FR 31W N 40K	8 5/8" DIAMETER ROUND ARCHITECTURAL BOLLARD	4000K LED	BL7011 BL7013-30LED L11111301.ES	Absorbed	0.90	23.81
○	SF2	4	AMP-6L7013 CL 31W N 40K	8 5/8" DIAMETER ROUND ARCHITECTURAL BOLLARD	4000K LED	BL7011 BL7013-30LED L11111301.ES	Absorbed	0.90	23.81
○	SS	10	AMP-LA223-1-1-1 POSLED-4-TS-40K	DECORATIVE ROUND CONTEMPORARY LED POST TOP	4000K LED	LA221P06ML DRX7LSK-ES	Absorbed	0.90	48.2
△	SU	1	SKINTX-MUE100-T	MULLION MOUNTED ALUMINUM EMERGENCY LUMINAIRE	SIX WHITE LEDs	2129-MUE100-T.ES	494	0.90	10.7
○	ST	3	VISTA-1185-8-JF-30-AMV-CX-ND	LED CHIP ON BOARD INGRADE WITH MAGNETIC ARMING AND FLOW THROUGH DESIGN	3000K LED	1185-8JF-30-AMV-CX-ND.ES	Absorbed	0.90	27.63

STATISTICS						
Description	Symbol	Avg	Max	Min	Max/Min	Avg/Min
Calc Zone #2	+	1.3 fc	9.8 fc	0.8 fc	N/A	N/A
SA	+	2.7 fc	2.7 fc	2.1 fc	1.0:1	1.0:1
SF	+	0.7 fc	0.7 fc	0.7 fc	1.0:1	1.0:1
SF2	+	0.7 fc	0.7 fc	0.7 fc	1.0:1	1.0:1
SM	+	6.8 fc	6.8 fc	6.8 fc	1.0:1	1.0:1
SM1	+	6.5 fc	6.5 fc	6.5 fc	1.0:1	1.0:1
SS	+	0.4 fc	0.4 fc	0.4 fc	1.0:1	1.0:1

ALTERNATE FIXTURE(S) NOTE

1. ALTERNATE FIXTURE PACKAGES MAY BE SUBMITTED FOR APPROVAL. ALTERNATE FIXTURES ARE TO SIMILAR IN STYLE AND MATCH THE QUALITY OF FIXTURE PACKAGE SHOWN ON PLANS. ALTERNATE FIXTURE PACKAGES MUST CONTAIN FIXTURE CUTSHEETS AND A PHOTOMETRIC WITH LIGHT LEVELS (MAX, MIN, RATIOS, ETC.) MATCHING THOSE ESTABLISHED ON THESE PLANS.

34-DR-16 APPROVED
FINAL PLANS PLANNING
6-2-17
DATE APPROVED BY



Butler Design Group Inc.
architects & planners
5017 East Washington St #107
Phoenix, Arizona 85034
Phone 602-957-1800



PLAZA COMPANIES

SKYSONG PLAZA 6
1355 NORTH SCOTTSDALE RD.
SCOTTSDALE, ARIZONA

Zoning Case #: 26-ZN-2004
Case #: 34-DR-2016
Plan Check #: 463-17
Date: 01.25.2017

157 CITY COMMENTS @ 2017
Project Number: 10046.914
Drawn By: RM
Title: SITE PHOTOMETRIC PLAN



E002

34-DR-16
APPROVED
FINAL PLANS PLANNING
 6-2-17
 DATE APPROVER

Bgd
 Butler Design Group Inc.
 architects & planners
 5017 East Washington St. #107
 Phoenix, Arizona 85034
 Phone 602-957-1800



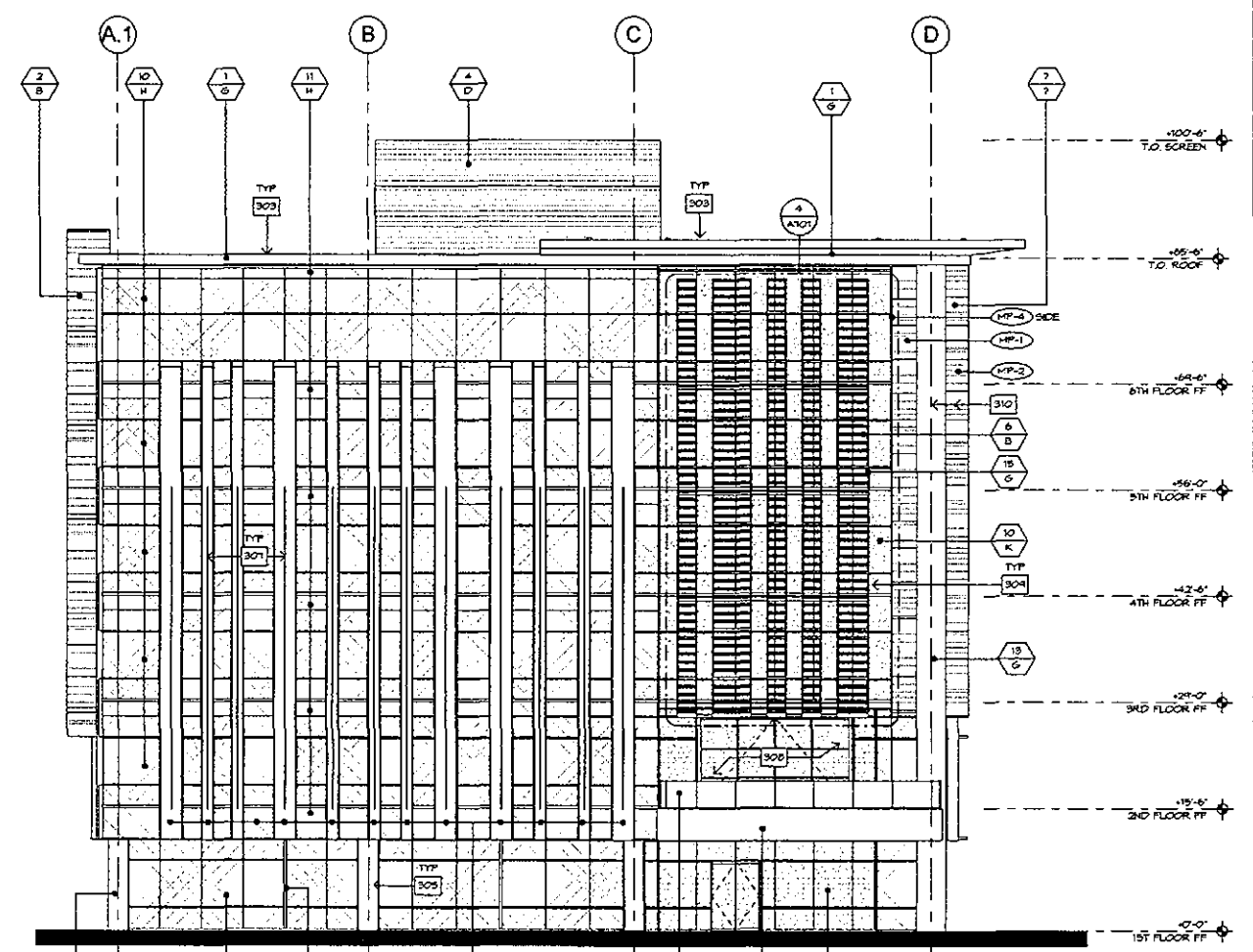
PLAZA COMPANIES

SKYSONG PLAZA 6
 1355 NORTH SCOTTSDALE RD.
 SCOTTSDALE, ARIZONA

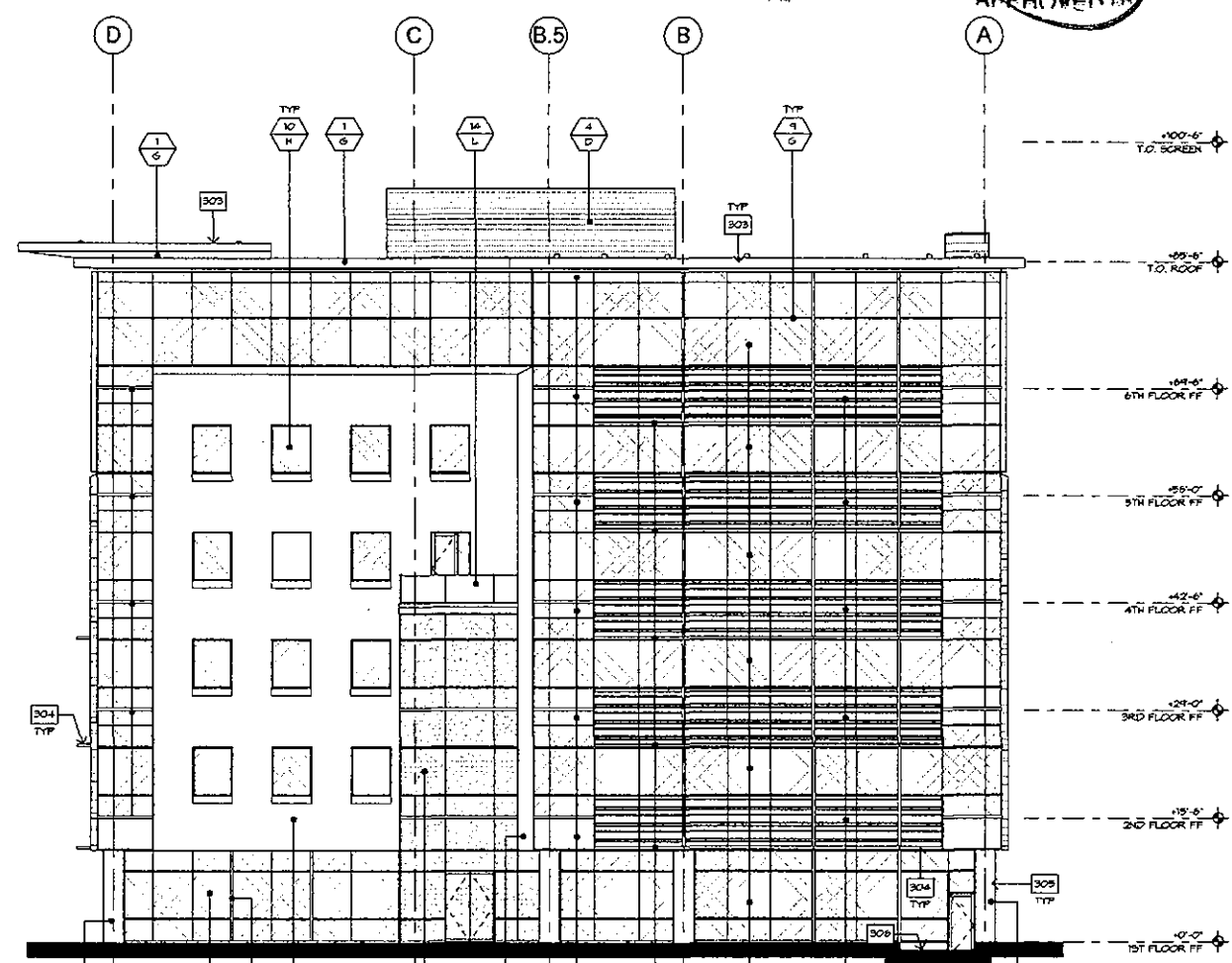
Zoning Case #: 26-24-2004
 Case #: 34-DR-2016
 Plan Check #: 463-17
 Date: 01.25.2017

Revisions:
 Project Number: 10046.914
 Drawn By: KT
 Title: EXTERIOR ELEVATIONS

A303



2 WEST ELEVATION
 SCALE: 3/32" = 1'-0"



1 EAST ELEVATION
 SCALE: 3/32" = 1'-0"

ELEVATION GENERAL NOTES

- SEE ENLARGED ELEVATIONS, DETAILS, AND WALL SECTIONS FOR ADDITIONAL INFORMATION IN RELATIONSHIP TO EXTERIOR CONDITIONS.
- SEE STRUCTURAL FOR ADDITIONAL INFORMATION.
- GRADES AT PERIMETER OF BUILDING ARE TO BE COORDINATED WITH THE CIVIL DOCUMENTS FOR ACTUAL FINISH GRADE LOCATIONS.
- TOP OF PARAPET IS BASED ON ELEVATIONS ABOVE FINISHED FLOOR.
- SEE DOOR AND WINDOW SCHEDULES AND ELEVATIONS FOR ADDITIONAL INFORMATION IN RELATIONSHIP TO TYPE AND STYLE.
- ALL DIMENSIONS SHOWN FOR LOCATIONS OF FINISH OF EXTERIOR ELEMENTS ARE TO BE COORDINATED WITH ARCHITECTURAL FLOOR PLANS, DETAILS, AND SECTIONS.
- SEE MATERIAL / COLOR SCHEDULE FOR ADDITIONAL INFORMATION.
- REFER TO WINDOW TYPES FOR TEMPERED GLASS LOCATIONS.
- PAIN TRANSITIONS ARE TO BE COORDINATED WITH THE ARCHITECT PRIOR TO APPLICATION.
- SEE ELECTRICAL DOCUMENTS FOR EXTERIOR LIGHTING FIXTURES, THE LOCATIONS SHOWN ON THE EXTERIOR ELEVATIONS AND WALL SECTIONS SHALL BE USED AT ALL LOCATIONS.
- PROVIDE BUILDING ADDRESS NUMBERS AT STREET SIDE OF BUILDING AND OTHER LOCATIONS AS SHOWN ON THE EXTERIOR ELEVATIONS. NUMBERS SHALL BE A MINIMUM OF 12" HIGH REVERSED FAN CHANNEL IN CONTRASTING COLORS.

- SEE SITE PLAN AND Hardscape PLANS FOR ADDITIONAL ALIGNMENT (ITD) IN RELATIONSHIP TO THE BUILDING TO SITE RELATED HORIZONTAL CONTROL.
- SIGNAGE BY OTHERS, TO BE PERMITTED BY OTHERS, PROVIDE ELECTRICAL AS REQUIRED.
- ALL EXPOSED METAL PLATES AND EXPOSED FLASHINGS ARE TO BE PAINTED TO MATCH ADJACENT BUILDING COLOR, UNLESS NOTED OTHERWISE.
- ALL SITE EQUIPMENT SHALL BE PAINTED TO MATCH ADJACENT BUILDING, SITE WALL, ETC.

MATERIAL SCHEDULE

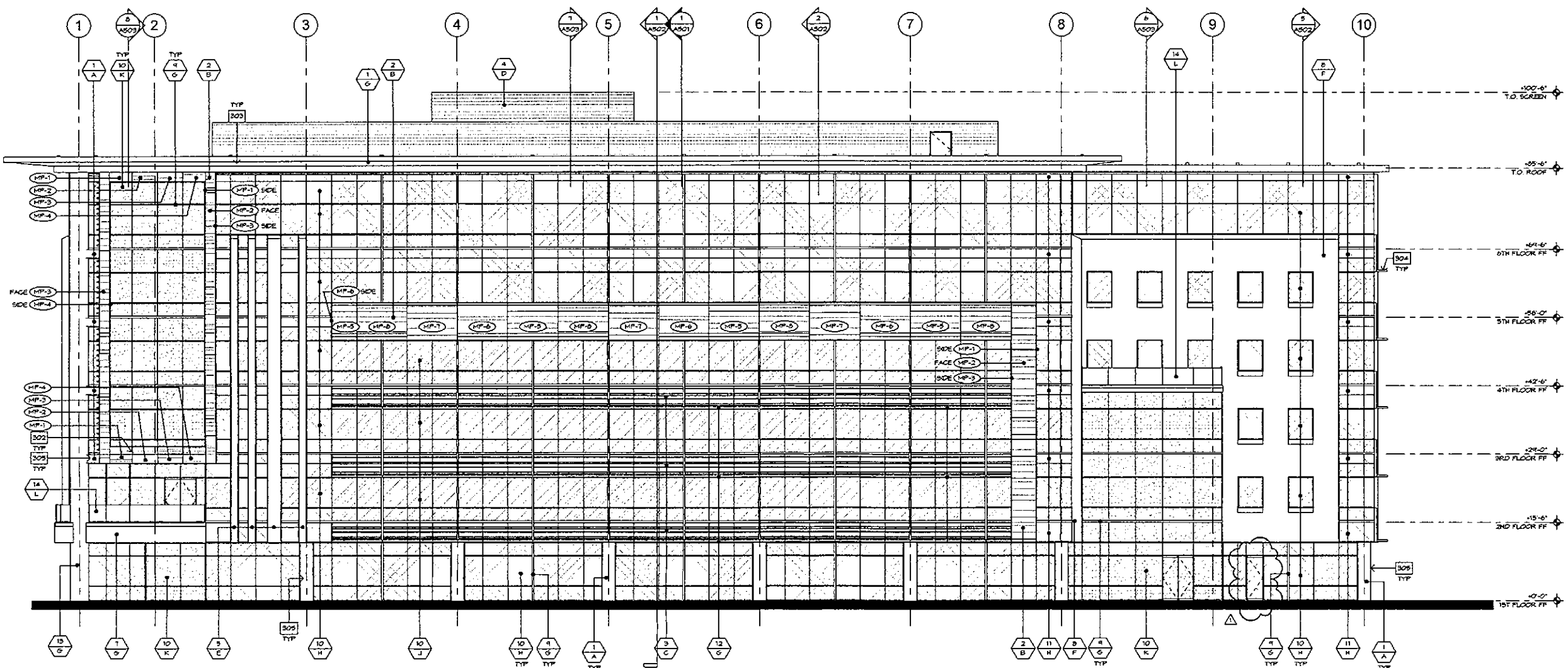
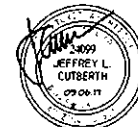
SYMBOL	MATERIAL
1	CAST-IN-PLACE CONCRETE
2	LAP SEAM METAL PANELING
3	ALP SPAN METAL PANEL - PERCEPTION COLLECTION PC30-12 AND PC50-12
4	ALTERNATING PATTERN FOR DETAILS
5	ALP SPAN METAL PANEL - PERCEPTION COLLECTION PC50-12
6	FLAT METAL PANEL
7	METAL PANEL TRELIS
8	ALUM. PANEL
9	1-1/2" EPS SYSTEM OVER EXTERIOR SHEATHING OVER METAL FRAMING
10	ALUMINUM WINDOW SYSTEM
11	1" INSULATED GLAZING
12	1" INSULATED GLAZING IN ALUMINUM SHADOW BOX AT SPANDREL CONDITION
13	BRISE SOLEIL LOUVER SHADE SYSTEM
14	ALUMINUM COLUMN COVER
15	GLASS PANELING
16	GLASS PANELING
17	STEEL FRAME

COLOR SCHEDULE

SYMBOL	NAME	NUMBER	MANUFACTURER
A	STANDARD GRAY	-	-
B	K-5 CLASSIC RUST	-	OLD COUNTRY HILLWORK
C	COOL ZINC GRAY	-	ALP SPAN
D	COOL OLD TOWN GRAY	-	ALP SPAN
E	POOL SKIN	SPW140	SHERWIN WILLIAMS
F	PARAF VEM	DECTNR	DUNK EDWARDS
G	SILVERSMITH	UC100R2F	PPG
H	TINTED GREY-GREEN (PRIMARY)	VME1-30	VRACON
J	TINTED GREY-GREEN (ACCENT)	VME1-30	VRACON
K	CLEAR	VNE 24-65	VRACON
L	1/2" CLEAR	-	-

ELEVATION KEYNOTES

- NOT EVERY KEYNOTE MAY APPLY OR BE REFERENCED ON EVERY SHEET.
- ROOF DRAIN FOR PLANS
 - ALIGN JOINTS WITH WINDOW MULLIONS / EDGE OF WALL AS INDICATED - SEE DETAIL 2/A102 FOR LAP SEAM PANEL PATTERN
 - 5/8" COAT CONCRETE SLAB EDGE/CONCRETE ROOF OVERHANGS TO COVER CABLE POCKETS AND PREP FOR PAINT
 - BRISE SOLEIL SHADE BY WINDOW SUPPLIER
 - ALL EXPOSED CONCRETE COLUMNS/BEAMS TO HAVE A SACK FINISH
 - SACK FINISH ON ALL EXPOSED STEEL WALLS, TYPICAL
 - RECESS IN PANEL FOR VERTICAL LIGHT FIXTURE - ALIGN TOP/BOTTOM OF RECESS WITH TOP/BOTTOM OF MULLION INDICATED
 - HYDRAULIC SINGLE LIFT DOOR - SEE PLANS
 - TRELIS - METAL PANELS ON STEEL FRAME (PAINT TO MATCH WINDOW SYSTEM) - COORDINATION ATTACHMENT WITH WINDOW SUPPLIER
 - SEE DETAIL 2/A102 FOR LAP SEAM METAL PANEL PATTERN - JOINT TO BE CENTERED ON COLUMN (BEYOND)



34-DR-16
APPROVED
FINAL PLANS PLANNING
6-2-17
DATE

1 SOUTH ELEVATION
SCALE: 3/32" = 1'-0"

ELEVATION GENERAL NOTES

- SEE ENLARGED ELEVATIONS, DETAILS, AND WALL SECTIONS FOR ADDITIONAL INFORMATION IN RELATIONSHIP TO EXTERIOR CONDITIONS.
- SEE STRUCTURAL FOR ADDITIONAL INFORMATION.
- GRADES AT PERIMETER OF BUILDING ARE TO BE COORDINATED WITH THE CIVIL DOCUMENTS FOR ACTUAL FINISH GRADE LOCATIONS.
- TOP OF PARAPET IS BASED ON ELEVATIONS ABOVE FINISHED FLOOR.
- SEE DOOR AND WINDOW SCHEDULES AND ELEVATIONS FOR ADDITIONAL INFORMATION IN RELATIONSHIP TO TYPE AND STYLE.
- ALL DIMENSIONS SHOWN FOR LOCATIONS OF FINISH OF EXTERIOR ELEMENTS ARE TO BE COORDINATED WITH ARCHITECTURAL FLOOR PLANS, DETAILS, AND SECTIONS.
- SEE MATERIAL / COLOR SCHEDULE FOR ADDITIONAL INFORMATION.
- REFER TO WINDOW TYPES FOR TEMPERED GLASS LOCATIONS.
- PAINT TRANSITIONS ARE TO BE COORDINATED WITH THE ARCHITECT PRIOR TO APPLICATION.
- SEE ELECTRICAL DOCUMENTS FOR EXTERIOR LIGHTING FIXTURES. THE LOCATIONS SHOWN ON THE EXTERIOR ELEVATIONS AND WALL SECTIONS SHALL BE USED AT ALL LOCATIONS.
- PROVIDE BUILDING ADDRESS NUMBERS AT STREET SIDE OF BUILDING AND OTHER LOCATIONS AS SHOWN ON THE EXTERIOR ELEVATIONS. NUMBERS SHALL BE A MINIMUM OF 12" HIGH REVERSED PAN CHANNEL IN CONTRASTING COLORS.
- SEE SITE PLAN AND HARDSCAPE PLANS FOR ADDITIONAL ALIGNMENT (TYP) IN RELATIONSHIP TO THE BUILDING TO SITE RELATED HORIZONTAL CONTROL.
- SEE SIGNAGE BY OTHERS, TO BE PERMITTED BY OTHERS. PROVIDE ELECTRICAL AS REQUIRED.
- ALL EXPOSED METAL PLATES AND EXPOSED FLASHING ARE TO BE PAINTED TO MATCH ADJACENT BUILDING COLOR, UNLESS NOTED OTHERWISE.
- ALL SITE EQUIPMENT SHALL BE PAINTED TO MATCH ADJACENT BUILDING, SITE MALL, ETC.

MATERIAL SCHEDULE

SYMBOL	MATERIAL
1	CAST-IN-PLACE CONCRETE
2	LAP SEAM METAL PANELING
3	AEF SPAN METAL PANEL - PERCEPTION COLLECTION PC30-12 AND PC30-12 ALTERNATING PATTERN PER DETAILS
4	AEF SPAN METAL PANEL - PERCEPTION COLLECTION PC30-12
5	FLAT METAL PANEL
6	METAL PANEL TRELIS
7	ARCH PANEL
8	1-1/2" EPS SYSTEM OVER EXTERIOR SHEATHING OVER METAL FRAMING
9	ALUMINUM WINDOW SYSTEM
10	T INSULATED GLAZING
11	T INSULATED GLAZING W/ ALUMINUM SHADOW BOX AT SPANDREL CONDITION
12	BRISE SOLEIL LOWER SHADE SYSTEM
13	ALUMINUM COLUMN COVER
14	GLASS RAILING
15	STEEL FRAME

COLOR SCHEDULE

SYMBOL	NAME	NUMBER	MANUFACTURER
A	STANDARD GRAY	-	-
B	K-9 GLASSIC RUST	-	OLD COUNTRY MILLWORK
C	COOL ZINC GRAY	-	AEF SPAN
D	COOL OLD TOWN GRAY	-	AEF SPAN
E	MOOD SKEN	SN6146	SHERWIN WILLIAMS
F	PHARF VIEW	DEC799	DUNN EDWARDS
G	SILVERSMITH	UC120403P	PPG
H	TINTED GREY-GREEN (PRIMARY)	VUE1-30	VRACON
J	TINTED GREY-GREEN (ACCENT)	VUE 1-50	VRACON
K	CLEAR	VUE 24-65	VRACON
L	1/2" CLEAR	-	-

ELEVATION KEYNOTES

- NOT EVERY KEYNOTE MAY APPLY OR BE REFERENCED ON EVERY SHEET.
- ROOF DRAIN PER PLANS
 - ALIGN JOINTS WITH WINDOW MULLIONS / EDGE OF WALL AS INDICATED - SEE DETAIL 2/A102 FOR LAP SEAM PANEL PATTERN
 - SKIM COAT CONCRETE SLAB EDGE/CONCRETE ROOF OVERHANGS TO COVER CABLE HOOKETS AND PREP FOR PAINT
 - BRISE SOLEIL SHADE BY WINDOW SUPPLIER
 - ALL EXPOSED CONCRETE COLUMNS/BEAMS TO HAVE A SACK FINISH
 - SACK FINISH ON ALL EXPOSED STEEL WALLS, TYPICAL
 - RECESS IN PANEL FOR VERTICAL LIGHT FIXTURE - ALIGN TOP/BOTTOM OF RECESS WITH TOP/BOTTOM OF MULLION INDICATED
 - HYDROLOG SINGLE LIFT DOOR - SEE PLANS
 - TRELIS - METAL PANELS ON STEEL FRAME (PAINT TO MATCH WINDOW SYSTEM) - COORDINATION ATTACHMENT WITH WINDOW SUPPLIER
 - SEE DETAIL 2/A102 FOR LAP SEAM METAL PANEL PATTERN - JOINT TO BE CENTERED ON COLUMN (BEYOND)

34-DR-16
APPROVED
FINAL PLANS PLANNING
 68-17
 DATE _____ APPROVED BY _____

Bd
 Butler Design Group Inc.
 architects & planners
 5017 East Washington St #107
 Phoenix, Arizona 85034
 Phone 602-957-1600



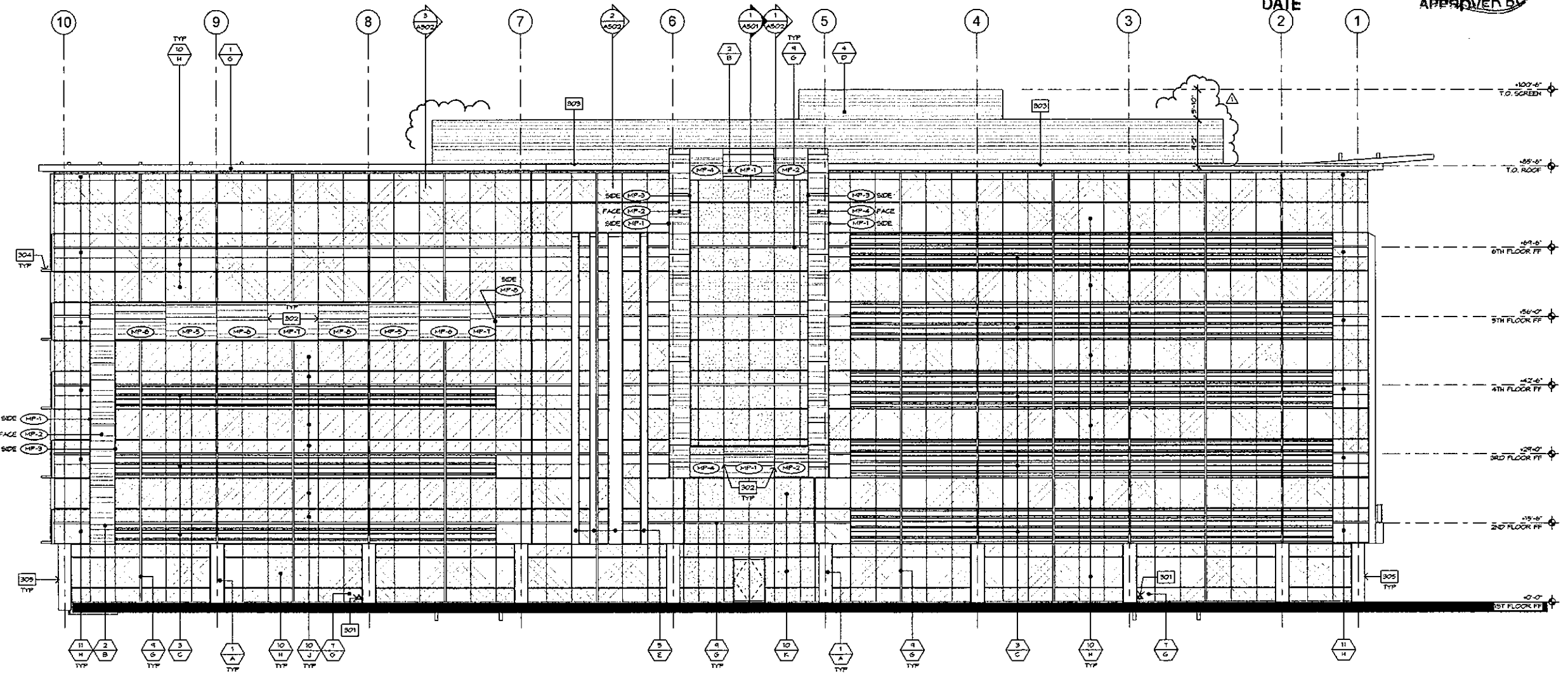
PLAZA
 COMPANIES

SKYSONG PLAZA 6
 1355 NORTH SCOTTSDALE RD.
 SCOTTSDALE, ARIZONA

Zoning Case #: 26-24-2004
 Case #: 34-DR-2016
 Plan Check #: 463-17
 Date: 01.25.2017

Revisions:
 1 1ST CITY COMMENTS 03.06.17
 Project Number: 10046.914
 Drawn By: KT
 Title: EXTERIOR ELEVATIONS

A301



1 NORTH ELEVATION
 SCALE: 3/32" = 1'-0"

ELEVATION GENERAL NOTES

- SEE ENLARGED ELEVATIONS, DETAILS, AND WALL SECTIONS FOR ADDITIONAL INFORMATION IN RELATIONSHIP TO EXTERIOR CONDITIONS.
- SEE STRUCTURAL FOR ADDITIONAL INFORMATION.
- GRADES AT PERIMETER OF BUILDING ARE TO BE COORDINATED WITH THE CIVIL DOCUMENTS FOR ACTUAL FINISH GRADE LOCATIONS.
- TOP OF PARAPET IS BASED ON ELEVATIONS ABOVE FINISHED FLOOR.
- SEE DOOR AND WINDOW SCHEDULES AND ELEVATIONS FOR ADDITIONAL INFORMATION IN RELATIONSHIP TO TYPE AND STYLE.
- ALL DIMENSIONS SHOWN FOR LOCATIONS OF FINISH OF EXTERIOR ELEMENTS ARE TO BE COORDINATED WITH ARCHITECTURAL FLOOR PLANS, DETAILS, AND SECTIONS.
- SEE MATERIAL / COLOR SCHEDULE FOR ADDITIONAL INFORMATION.
- REFER TO WINDOW TYPES FOR TYPED GLASS LOCATIONS.
- PAINT TRANSITIONS ARE TO BE COORDINATED WITH THE ARCHITECT PRIOR TO APPLICATION.
- SEE ELECTRICAL DOCUMENTS FOR EXTERIOR LIGHTING FIXTURES. THE LOCATIONS SHOWN ON THE EXTERIOR ELEVATIONS AND WALL SECTIONS SHALL BE USED AT ALL LOCATIONS.
- PROVIDE BUILDING ADDRESS NUMBERS AT STREET SIDE OF BUILDING AND OTHER LOCATIONS AS SHOWN ON THE EXTERIOR ELEVATIONS. NUMBERS SHALL BE A MINIMUM OF 12" HIGH REVERSED PAN CHANNEL IN CONTRASTING COLORS.
- SEE SITE PLAN AND LANDSCAPE PLANS FOR ADDITIONAL ALIGNMENT ITEMS IN RELATIONSHIP TO THE BUILDING TO SITE RELATED HORIZONTAL CONTROL.
- SIGNAGE BY OTHERS, TO BE PERMITTED BY OTHERS. PROVIDE ELECTRICAL AS REQUIRED.
- ALL EXPOSED METAL PLATES AND EXPOSED FLASHINGS ARE TO BE PAINTED TO MATCH ADJACENT BUILDING COLOR, UNLESS NOTED OTHERWISE.
- ALL SITE EQUIPMENT SHALL BE PAINTED TO MATCH ADJACENT BUILDING, SITE WALL, ETC.

MATERIAL SCHEDULE

SYMBOL	MATERIAL
1	CAST-IN-PLACE CONCRETE
2	LAP SPAN METAL PANELING
3	AEF SPAN METAL PANEL - PERCEPTION COLLECTION PCSO-12 AND PCSO-12 ALTERNATING PATTERN PER DETAILS
4	AEF SPAN METAL PANEL - PERCEPTION COLLECTION PCSO-12
5	FLAT METAL PANEL
6	METAL PANEL TRELLIS
7	ACM PANEL
8	1-1/2" EPS SYSTEM COVER EXTERIOR SHEATHING OVER METAL FRAMING
9	ALUMINUM WINDOW SYSTEM
10	1" INSULATED GLAZING
11	1" INSULATED GLAZING IN ALUMINUM SHADOW BOX AT SPANDREL CONDITION
12	BRIDE SOREL LOWER SHADE SYSTEM
13	ALUMINUM COLUMN COVER
14	GLASS RAILING
15	STEEL FRAME

COLOR SCHEDULE

SYMBOL	NAME	NUMBER	MANUFACTURER
A	STANDARD GRAY	-	-
B	K-3 CLASSIC RUST	-	OLD COUNTRY MILLWORK
C	COOL SINC GRAY	-	AEF SPAN
D	COOL OLD TOWN GRAY	-	AEF SPAN
E	ROOF SCREEN	SP0140	SHERWIN WILLIAMS
F	PRIMRY VEIN	DEC079	DUNN EDWARDS
G	SILVERSMITH	UC70000P	PPG
H	TINTED GREY-GREEN (PRIMARY)	VNE1-30	VRACON
J	TINTED GREY-GREEN (ACCENT)	VNE 1-50	VRACON
K	CLEAR	VNE 24-65	VRACON
L	1/2" CLEAR	-	-

ELEVATION KEYNOTES

- NOT EVERY KEYNOTE MAY APPLY OR BE REFERENCED ON EVERY SHEET.
- ROOF DRAIN PER PLANS
 - ALIGN JOINTS WITH WINDOW MULLIONS / EDGE OF WALL AS INDICATED - SEE DETAIL 2/A102 FOR LAP BEAM PANEL PATTERN
 - SKIM COAT CONCRETE SLAB EDGE/CONCRETE ROOF OVERHANGS TO COVER CABLE Pockets AND PREP FOR PAINT
 - BRIDE SOREL SHADE BY WINDOW SUPPLIER
 - ALL EXPOSED CONCRETE COLUMNS/BEAMS TO HAVE A SACK FINISH
 - SACK FINISH ON ALL EXPOSED STEEL WALLS, TYPICAL
 - RECESS IN PANEL FOR VERTICAL LIGHT FIXTURE - ALIGN TOP/BOTTOM OF RECESS WITH TOP/BOTTOM OF MULLION INDICATED
 - HYDROLIC SINGLE LIFT DOOR - SEE PLANS
 - TRELLIS - METAL PANELS ON STEEL FRAME (PAINT TO MATCH WINDOW SYSTEM) - COORDINATION ATTACHMENT WITH WINDOW SUPPLIER
 - SEE DETAIL 2/A102 FOR LAP BEAM METAL PANEL PATTERN - JOINT TO BE CENTERED ON COLUMN (BEYOND)



Zoning Case #: 26-2A-2004
 Case #: 34-DR-2016
 Plan Check #: 463-17
 Date: 01.25.2017

Revisions:

101 CITY COMMENTS 03.06.17
 Project Number: 10046.914
 Drawn By: AM
 Title: HARDSCAPE AND ENLARGED PLANS

KEYNOTES

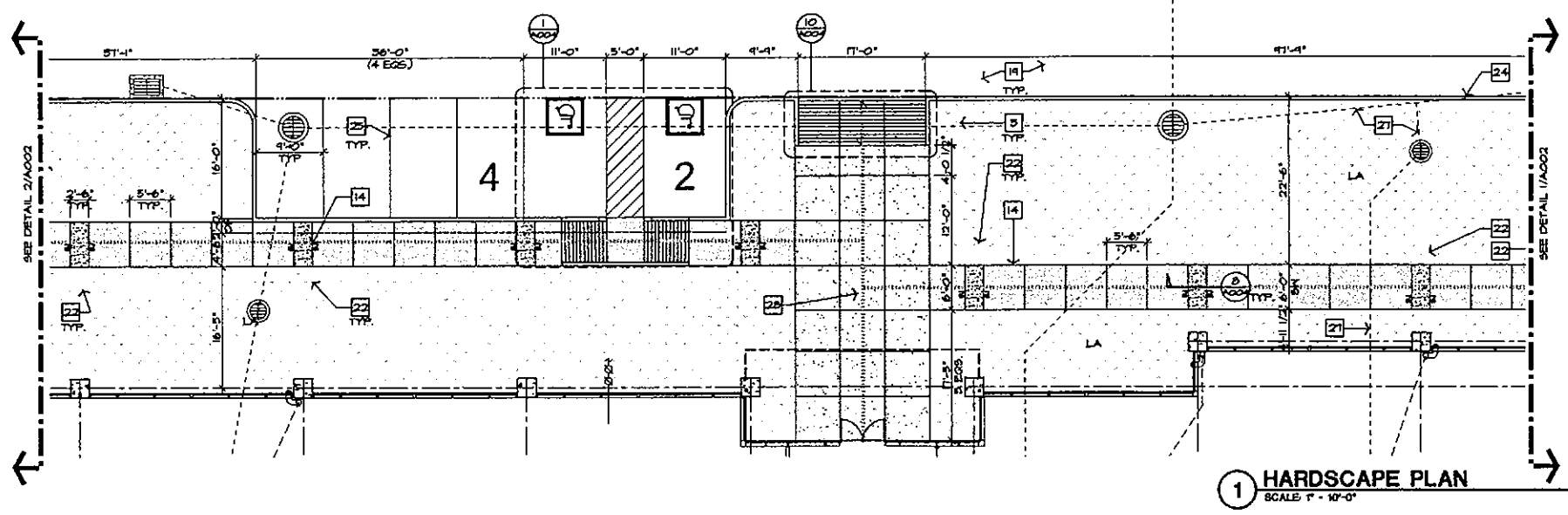
- * NOT EVERY KEYNOTE MAY APPLY OR BE REFERENCED ON EACH SHEET
- 1 EXISTING CONC. CURB/PARKING TO BE REMOVED/ ADJUSTED AS SHOWN
 - 2 EXISTING BICYCLE PARKING TO REMAIN
 - 3 EXISTING CONC. BOLLARDS
 - 4 EXISTING BENCH TO BE RELOCATED
 - 5 EXISTING BENCHES TO REMAIN
 - 6 EXISTING STOP SIGN TO REMAIN
 - 7 EXISTING FIRE LANE SIGN TO REMAIN
 - 8 EXISTING SIGN TO REMAIN
 - 9 EXISTING SIDEWALK TO REMAIN
 - 10 EXISTING TREE GRATES TO REMAIN - SEE LANDSCAPE
 - 11 EXISTING DECOR PAVERS TO REMAIN
 - 12 EXISTING CONC. PAVERS TO BE REMOVED
 - 13 EXISTING EXPOSED AGGREGATE CONC. AND PAVERS UNDER SHADE SAIL TO REMAIN
 - 14 NEW CONCRETE SIDEWALK, SEE HARDSCAPE LEGEND
 - 15 NEW DECORATIVE CONCRETE PAVERS
 - 16 NEW LOADING ZONE
 - 17 NEW ACCESSIBLE RAMP
 - 18 NEW ELEVATED PEDESTRIAN CROSSING (+ 6' ABOVE) EXISTING SOUTH RAMP TO BE MODIFIED AS SHOWN, SEE CIVIL
 - 19 ASPHALT PAVING - SEE CIVIL
 - 20 SERVICE ACCESS RAMP
 - 21 PLANTER BEAT WALL
 - 22 LIGHT FIXTURE - SEE SITE LEGEND FOR TYPES
 - 23 STEEL TRELLIS CANOPIES
 - 24 VERTICAL CONCRETE CURB - SEE CIVIL
 - 25 4" WHITE PAINT STRIPE
 - 26 EXISTING TENSILE STRUCTURE
 - 27 ROOF DRAINS TO CONNECT TO STORM DRAIN - SEE CIVIL AND PLUMBING
 - 28 2% MAX SLOPE @ 44' LANDINGS AND AT INTERSECTIONS AT BOTH DIRECTIONS - SEE CIVIL FOR SPECIFIC LOCATIONS
 - 29 NEW PARKING TO MATCH EXISTING
 - 30 TRUCK TURNING RADIUS

SITE LEGEND

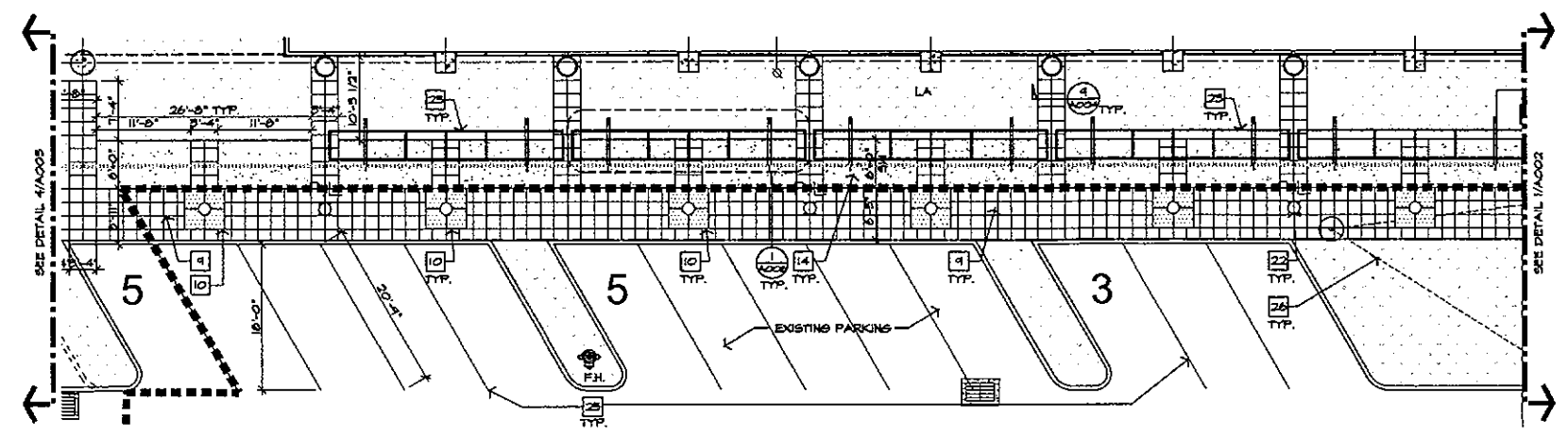
- PROVIDE HARDSCAPE FIELD SAMPLES FOR ARCHITECT APPROVAL
- DECORATIVE CONCRETE PAVERS
 COLOR: TO MATCH EXIST.
 PATTERN: TO MATCH EXIST.
 - CONC. PAVING, EXPOSED COLOR AGGREGATE (DAVIS)
 COLOR: ADOBE 6107B
 FINISH: HDG TO MATCH EXISTING
 LOCATION: SIDEWALK LOCATIONS AS SHOWN
 - CONCRETE COLOR (DAVIS)
 COLOR: ADOBE 6107B
 FINISH: SMOOTH TROUELED ON HORIZONTAL EDGES AND FORMED ON VERTICAL PLANE
 LOCATION: ALL VERTICAL WALLS, PIERS, BENCHES AND COUNTERS
 - CONCRETE COLOR (DAVIS)
 COLOR: SAN DIEGO BUFF 5331
 FINISH: MEDIUM BROOM W/ 2" TROUELED EDGE
 LOCATIONS: SIDEWALK LOCATIONS AS SHOWN
 - CONC. PAVING, EXPOSED COLOR AGGREGATE (DAVIS)
 COLOR: DARK GRAY 2024 W/ AN ALTERNATE FOR LIGHT GRAY 2024
 FINISH: 3/8" RIVER RIN EXPOSED
 LOCATION: COURTYARD AS SHOWN
 - STANDARD GRAY CONCRETE
 FINISH: MEDIUM BROOM W/ 2" TROUELED EDGE
 LOCATION: VARIES AS SHOWN
 - LANDSCAPE AREA
 - EXISTING FIXTURE
 FIXTURE TO REMAIN UNO.
 - PLANTER POT
 TO MATCH EXISTING
 SEE LANDSCAPE FOR ADDITIONAL INFO
 - LI INDUSTRIES LIGHTING
 SEE ELECTRICAL DOCS.
 - LIGHT BOLLARDS
 SEE ELECTRICAL DOCS.
 - LIGHT BOLLARDS
 SEE ELECTRICAL DOCS.
 - SURFACE LIGHTING
 SEE ELECTRICAL DOCS.
 - ALIGN CENTERLINE OF ELEMENTS AS INDICATED
 - EXPANSION JOINT - CAULKING TO MATCH DARKEST ADJACENT COLOR SURFACE UNO.

HARDSCAPE GENERAL NOTES

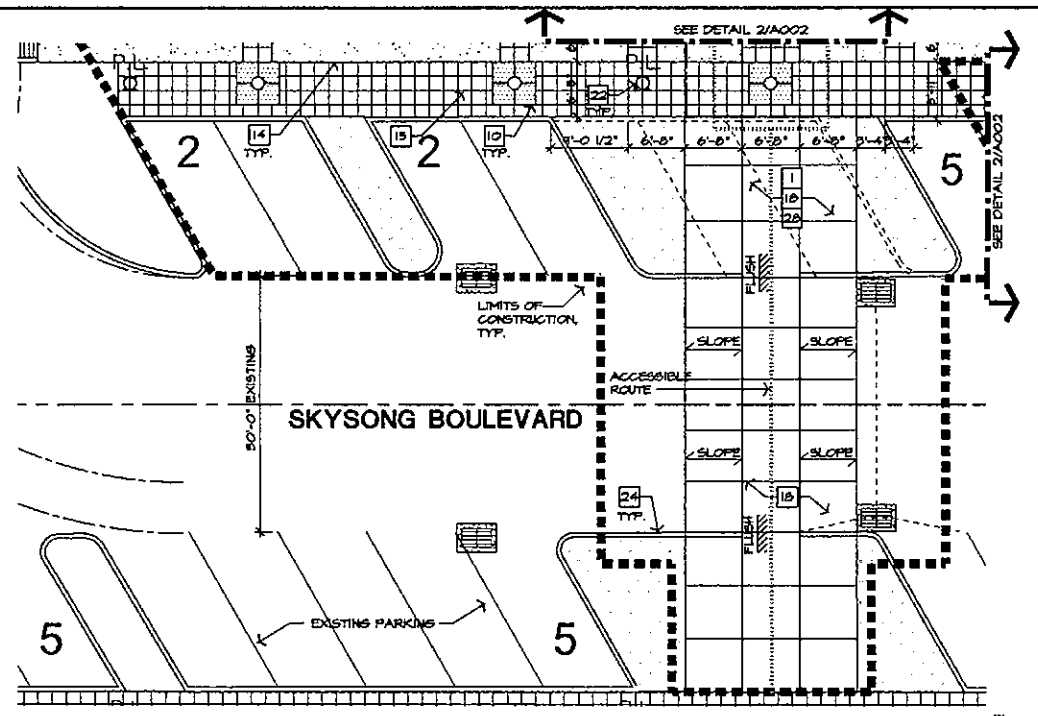
1. USE 1/2" FIBER EXPANSION MATERIAL AT ALL LOCATIONS WHERE PAVING MATERIALS MEET, AT DISSIMILAR CONCRETE FOURS, OR WHERE SUCH MATERIALS ABUT THE BUILDING. HOLD FIBER 1/2" BELOW TOP OF CONCRETE. APPLY INTEGRAL COLOR HORIZONTAL TRAFFIC SEALANT W/ GLOSS REDUCER TO MATCH DARKEST ADJACENT COLOR.
2. PROVIDE THICKENED TURNDOWN SLAB EDGE ADJACENT TO LANDSCAPE - TYPICAL.
3. ALL JOINTS ARE AS SHOWN - UNLESS NOTED OTHERWISE. GENERAL CONTRACTOR TO COORDINATE WITH SPECIFICATIONS AND SOILS REPORT FOR CONTROL JOINT REQUIREMENTS.
4. ALL TRANSFORMER BOXES, METER PANELS AND ELECTRIC EQUIPMENT, BACKFLOW DEVICES AND ANY OTHER UTILITY EQUIPMENT SHALL BE PAINTED TO MATCH THE ADJACENT SITE/SCREEN WALL OR BUILDING COLOR. FREESTANDING UTILITY EQUIPMENT IN LANDSCAPE AREAS ARE TO MATCH THE ADJACENT DISCOMPOSED GRANITE COLOR.



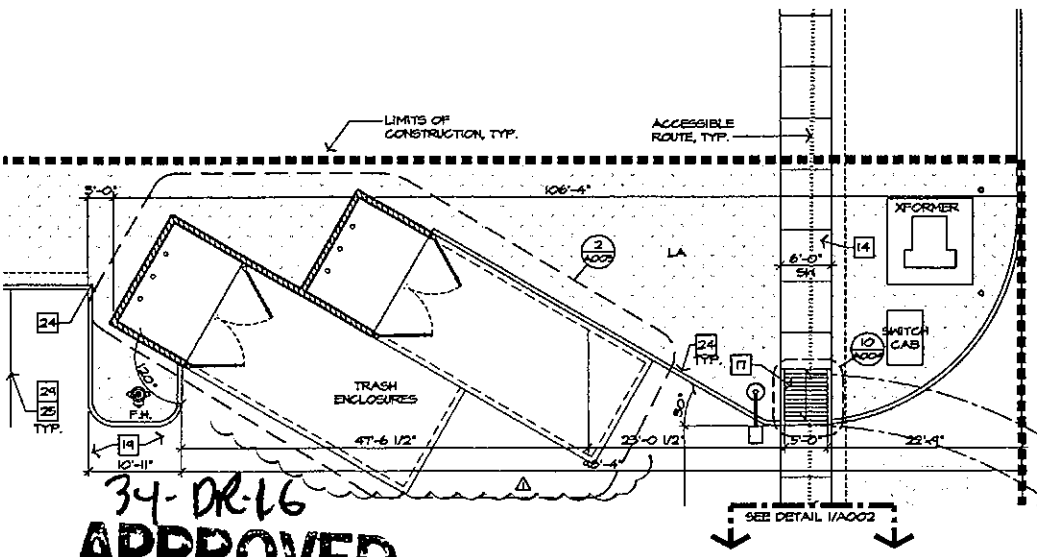
1 HARDSCAPE PLAN
 SCALE: 1" = 10'-0"



2 HARDSCAPE PLAN
 SCALE: 1" = 10'-0"

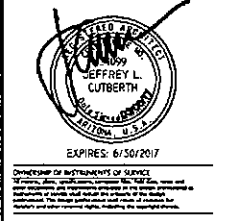


4 ENLARGEMENT AT SPEED RAMP
 SCALE: 1" = 10'-0"



3 ENLARGEMENT AT TRASH ENCLOSURES
 SCALE: 1" = 10'-0"

34-DR-16
APPROVED
FINAL PLANS PLANNING
 6-2-17
 DATE APPROVED BY



Zoning Case #: 28-2N-2004
 Case #: 34-DR-2016
 Plan Check #: 463-17
 Date: 01.25.2017

Revisions:
 Project Number: 10046.914
 Drawn By: AM
 Title: HARDSCAPE PLANS
A002

KEYNOTES

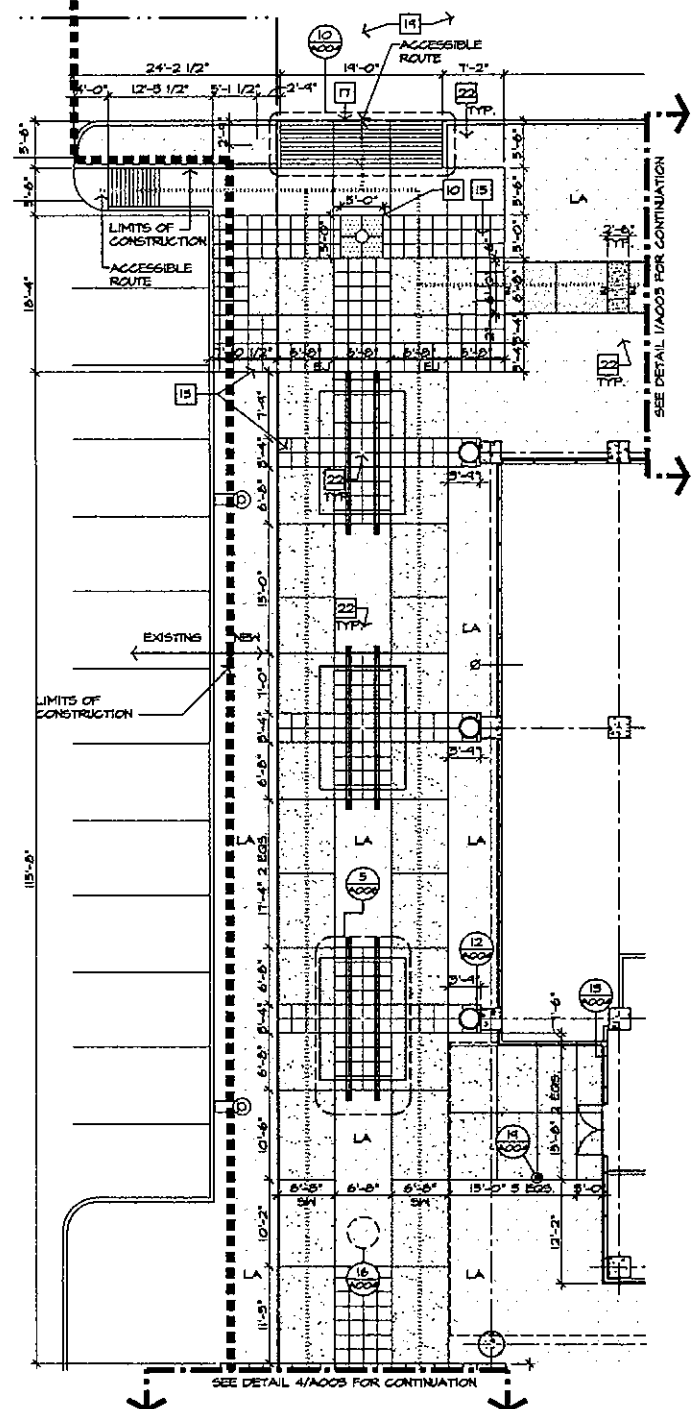
- * NOT EVERY KEYNOTE MAY APPLY OR BE REFERENCED ON EACH SHEET
- 1 EXISTING CONC. CURB/PARKING TO BE REMOVED/ ADJUSTED AS SHOWN
- 2 EXISTING BICYCLE PARKING TO REMAIN
- 3 EXISTING CONC. BOLLARDS
- 4 EXISTING BENCH TO BE RELOCATED
- 5 EXISTING BENCHES TO REMAIN
- 6 EXISTING STOP SIGN TO REMAIN
- 7 EXISTING FIRE LANE SIGN TO REMAIN
- 8 EXISTING SIGN TO REMAIN
- 9 EXISTING SIDEWALK TO REMAIN
- 10 EXISTING TREE GRATES TO REMAIN - SEE LANDSCAPE
- 11 EXISTING DECOR PAVERS TO REMAIN
- 12 EXISTING CONC. PAVERS TO BE REMOVED
- 13 EXISTING EXPOSED AGGREGATE CONC. AND PAVERS UNDER SHADE SAIL TO REMAIN
- 14 NEW CONCRETE SIDEWALK, SEE HARDSCAPE LEGEND
- 15 NEW DECORATIVE CONCRETE PAVERS
- 16 NEW LOADING ZONE
- 17 NEW ACCESSIBLE RAMP
- 18 NEW ELEVATED PEDESTRIAN CROSSING (1.6' ABOVE)
 EXISTING SOUTH RAMP TO BE MODIFIED AS SHOWN, SEE CIVIL
- 19 ASPHALT PAVING - SEE CIVIL
- 20 SERVICE ACCESS RAMP
- 21 PLANTER SEAT WALL
- 22 LIGHT FIXTURE - SEE SITE LEGEND FOR TYPES
- 23 STEEL TRELLIS CANOPIES
- 24 VERTICAL CONCRETE CURB - SEE CIVIL
- 25 4" WHITE PAINT STRIPE
- 26 EXISTING TENSILE STRUCTURE
- 27 ROOF DRAINS TO CONNECT TO STORM DRAIN - SEE CIVIL AND PLUMBING
- 28 7% MAX SLOPE @ 44' LANDINGS AND AT INTERSECTIONS AT BOTH DIRECTIONS - SEE CIVIL FOR SPECIFIC LOCATIONS
- 29 NEW PARKING TO MATCH EXISTING
- 30 TRUCK TURNING RADIUS

SITE LEGEND

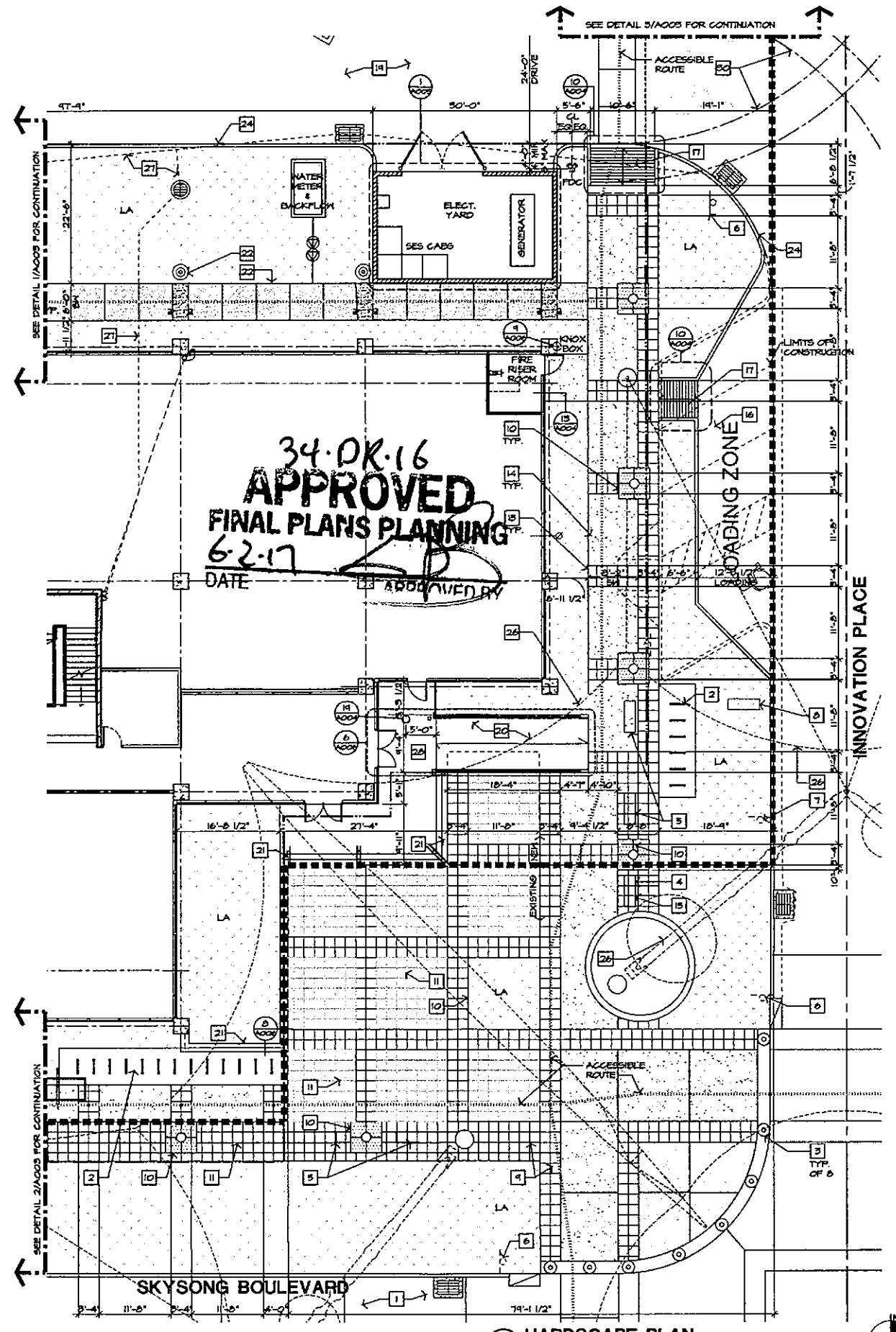
- PROVIDE HARDSCAPE FIELD SAMPLES FOR ARCHITECT APPROVAL
- DECORATIVE CONCRETE PAVERS
 COLOR: TO MATCH EXIST.
 PATTERN: TO MATCH EXIST.
 - CONC. PAVING, EXPOSED COLOR AGGREGATE (DAVIS)
 COLOR: ADOBE 61078
 FINISH: 4 MIX TO MATCH EXISTING
 LOCATION: SIDEWALK LOCATIONS AS SHOWN
 - CONCRETE COLOR (DAVIS)
 COLOR: ADOBE 61078
 FINISH: SMOOTH TROUELED ON HORIZONTAL EDGES AND FORCED ON VERTICAL PLANE
 LOCATION: ALL VERTICAL WALLS, PIERS, BENCHES AND COUNTERS.
 - CONCRETE COLOR (DAVIS)
 COLOR: SAN DIEGO BUFF 6231
 FINISH: MEDIUM BROOM W/ 2" TROUELED EDGE
 LOCATION: SIDEWALK LOCATIONS AS SHOWN
 - CONC. PAVING, EXPOSED COLOR AGGREGATE (DAVIS)
 COLORS: DARK GRAY 8084 W/ AN ALTERNATE FOR LIGHT GRAY 8084
 FINISH: 3/8" RIVER RUN EXPOSED
 LOCATION: COURTYARD AS SHOWN
 - STANDARD GRAY CONCRETE
 FINISH: MEDIUM BROOM W/ 2" TROUELED EDGE
 LOCATION: VARIES AS SHOWN
 - LANDSCAPE AREA
 - EXISTING FIXTURE
 FIXTURE TO REMAIN UNO.
 - PLANTER FOOT
 TO MATCH EXISTING
 *SEE LANDSCAPE FOR ADDITIONAL INFO
 - INDUSTRIES LIGHTING
 SEE ELECTRICAL DOCS.
 - LIGHT BOLLARDS
 SEE ELECTRICAL DOCS.
 - LIGHT BOLLARDS
 SEE ELECTRICAL DOCS.
 - SURFACE LS LIGHTING
 SEE ELECTRICAL DOCS
 - ALIGN CENTERLINE OF ELEMENTS AS INDICATED
 - EXPANSION JOINT - CAULKING TO MATCH DARKEST ADJACENT COLOR SURFACE UNO.

HARDSCAPE GENERAL NOTES

1. USE 1/2" FIBER EXPANSION MATERIAL AT ALL LOCATIONS WHERE PAVING MATERIALS MEET, AT DISSIMILAR CONCRETE POURS, OR WHERE SUCH MATERIALS MEET THE BUILDING. HOLD FIBER 1/2" BELOW TOP OF CONCRETE. APPLY INTEGRAL COLOR HORIZONTAL TRAFFIC SEALANT w/ GLOSS REDUCER TO MATCH DARKEST ADJACENT COLOR.
2. PROVIDE THICKENED TURNDOWN SLAB EDGE ADJACENT TO LANDSCAPE - TYPICAL.
3. ALL JOINTS ARE AS SHOWN - UNLESS NOTED OTHERWISE GENERAL CONTRACTOR TO COORDINATE WITH SPECIFICATIONS AND BOILS REPORT FOR CONTROL JOINT REQUIREMENTS.
4. ALL TRANSFORMER BOXES, METER BOXES, METER PANELS AND ELECTRIC EQUIPMENT, BACK-FLOW DEVICES AND ANY OTHER UTILITY EQUIPMENT SHALL BE PAINTED TO MATCH THE ADJACENT SITE/SCREEN WALL OR BUILDING COLOR. FREESTANDING UTILITY EQUIPMENT IN LANDSCAPE AREAS ARE TO MATCH THE ADJACENT DECORATED GRANITE COLOR.



2 HARDSCAPE PLAN
 SCALE: 1" = 10'-0"



1 HARDSCAPE PLAN
 SCALE: 1" = 10'-0"

APPLICABLE BUILDING CODES

CITY OF SCOTTSDALE AMENDED:
 2012 INTERNATIONAL BUILDING CODE
 2012 INTERNATIONAL MECHANICAL CODE
 2012 INTERNATIONAL FIRE CODE
 2012 INTERNATIONAL PLUMBING CODE
 2012 INTERNATIONAL ENERGY CONSERVATION CODE
 2011 NATIONAL ELECTRIC CODE
 2010 ADA STANDARDS FOR ACCESSIBLE DESIGN
 2009 ICC/ANSI ITS1 ACCESSIBLE AND USABLE BUILDINGS & FACILITIES
 2009 NATIONAL FIRE PROTECTION ASSOCIATION

PROJECT DESCRIPTION

SKYSONG 6 IS THE FIFTH OFFICE BUILDING AND THE FIRST 6 STORY BUILDING ON THE SKYSONG CAMPUS AND IS LOCATED IN THE SOUTHEAST CORNER OF THE NORTHWEST QUADRANT OF THE DEVELOPMENT. THIS PHASE OF THE PROJECT WILL BE MADE UP OF ONE SUBMITTAL WHICH INCLUDES SHELL WITH CORE INTERIOR AND SITE IMPROVEMENTS.

THIS SUBMITTAL CONSISTS OF A NEARLY 151,318 G.S.F. 6 STORY OFFICE BUILDING AND SITE AREA. THE FULL BUILDING ENVELOPE INCLUDES ALL INTERIOR CORE/LOBBY IMPROVEMENTS FOR RESTROOMS, LOBBY IMPROVEMENTS, CORRIDORS, AND FINISHES FOR EACH OF THESE ELEMENTS ON ALL 6 FLOORS OF THE BUILDING. VERTICAL CIRCULATION ELEMENTS (STAIRS AND ELEVATORS), AND PRIMARY MECHANICAL/PLUMBING/ELECTRICAL PROVISIONS. THE SITE CONSISTS OF SITE AREAS SURROUNDING THE BUILDING AND THE EXISTING RETAIL BUILDING AS WELL AS LIMITED SURFACE PARKING, PEDESTRIAN PATHS AND AMENITIES, LANDSCAPING, AND STORM DRAIN AND UTILITIES TO SERVE THE BUILDING.

IT IS UNDERSTOOD THAT THIS SUBMITTAL REQUIRE APPROVAL AND COMPLETED CONSTRUCTION TO OBTAIN AND CERTIFICATE OF OCCUPANCY AND THAT ANY INDIVIDUAL SUBMITTAL APPROVAL WILL ONLY QUALIFY FOR CERTIFICATE OF COMPLETION.

PROJECT INFORMATION

BUILDING DATA

BUILDING OCCUPANCY	: B (OFFICE) / A (ASSEMBLY)		
CONSTRUCTION TYPE	: 1A		
FLOOR AREA:	GSA*	GFA**	NAC***
1ST FLOOR	: 23,291 GSF	: 23,216 SF	: 219 SF
2ND FLOOR	: 25,195 GSF	: 24,619 SF	: 472 SF
3RD FLOOR	: 25,195 GSF	: 25,956 SF	: 370 SF
4TH FLOOR	: 25,341 GSF	: 24,846 SF	: 1,095 SF
5TH FLOOR	: 25,310 GSF	: 24,646 SF	: 472 SF
6TH FLOOR	: 25,070 GSF	: 24,866 SF	: 1,102 SF
ROOF FLOOR	: 127 GSF	: 127 SF	: 127 SF
TOTAL BUILDING AREA	: 151,318 G.S.F.	: 147,165 SF	: 7,152 SF

* GSA = GROSS BUILDING AREA (OUTSIDE FACE)
 ** GFA = GROSS FLOOR AREA (INSIDE FACE OF EXTERIOR WALL USED FOR OCCUPANCY)
 *** NAC = NON-AC AREA (CANOPIES, PROJECTIONS)

FIRE RATING

FIRE RESISTANCE RATING REQUIREMENTS FOR TYPE 1A CONSTRUCTION PER IBC TABLE 601

PRIMARY STRUCTURAL FRAME	: 1 HR.
BEARING WALLS - EXTERIOR	: 1 HR.
BEARING WALLS - INTERIOR	: 1 HR.
NON-BEARING WALLS - INTERIOR	: 1 HR.
FLOOR CONSTRUCTION	: 1 HR.
ROOF CONSTRUCTION	: 1 HR.
EXTERIOR WALL VERTICAL SEPARATION	: N.R. PER SECTION 106.5.5 EXCEPTION 2
HANDED FIRE ALARM BELL NOT REQUIRED	: 107.2.2
CLASS 1 STANDPIPE REQUIRED	: 109.3.1 EXCEPTION 1
NO RATED CORRIDORS	: TABLE 1016.1
DEAD END 50' COMMON PATH OF TRAVEL + 100'	: 1016.4 EXCEPTION 12
TRAVEL DISTANCE + 250'	: TABLE 1016.3
NO AREA OF REFUGE REQUIRED	: TABLE 1016.3 EXCEPTION 12
EXIT ENCLOSURES + VERTICAL SHAFTS MUST BE 2 HR.	: 1022.2

ALL EXIT STAIRS SHALL BE ENCLOSED
 - STAIRWAY MARKINGS ARE REQUIRED
 - SPINGS OF DOOR IN REAR OF EGRESS SHALL NOT LEAVE LESS THAN 1/2 OF REQUIRED WIDTH IN ANY POSITION
 - NOT MORE THAN SOME OF THE REQUIRED NUMBER OF EXITS MAY PASS THROUGH AN UNRATED LOBBY (FURTHER EXPLAINED IN 2012 IBC COMMENTARY VOL. 1)
 FOUR (4) OR MORE STORIES REQUIRE ONE (1) EMERGENCY ACCESS ELEVATOR TO ACCOMMODATE A STRETCHER (GOURNET) 36" X 24" IN HORIZONTAL POSITION
 - STANDBY POWER REQUIRED FOR SEPARATE EMERGENCY ACCESS ELEVATOR
 - EMERGENCY SIGN REQUIRED AT ELEVATOR REGARDING EXITS
 - ACCESSIBLE ELEVATOR MUST BE SHOCKPROOF
 - ELEVATOR INCLUDE THROUGH NATURAL VENTILATION OR PRESSURIZATION
 - TWO WAY COMMUNICATION REQUIRED

AREA CALCULATIONS

ALLOWABLE BUILDING AREA PER IBC TABLE 503 GROUP "B" (OFFICE) TYPE 1A CONSTRUCTION AREA

TABULAR AREA (PER SECTION 503)	: 37,500 S.F.
AREA INCREASE FOR PROTRUSION (15% PER SECTION 506.2)	: 28,125 S.F.
AREA INCREASE FOR SPRINKLERS (200% PER SECTION 506.3)	: 15,000 S.F.
ALLOWABLE BUILDING AREA PER STORY (PER SECTION 504)	: 140,625 S.F.
ALLOWABLE BUILDING AREA (PER SECTION 504.1 EXCEPTION 2)	: 1,043,750 S.F.
PROVIDED BUILDING AREA	: 151,318 S.F.

ALLOWABLE AREA PER STORY OF A/D NON-SEPARATED MIXED USE PER SECTION 508.3*

TABULAR	: 19,500 S.F.
AREA INCREASE	: 11,625 S.F.
ALLOWABLE	: 31,125 S.F.
ALLOWABLE	: 58,125 S.F.

MAX PROVIDED AREA PER STORY UNDER THE 5TH STORY = 25,195 SF (2ND STORY)

* NON SEPARATED MIXED USE CALCULATED IS LIMITED TO 4TH FLOOR PER TABLE 503 WITH INCREASE PER SECTION 504.2 ABOVE THE 4TH STORY. A/B OCCUPANCIES ARE REQUIRED TO BE SEPARATED BY 1HR SEPARATION PER SECTION 506.4 + TABLE 508.4

HEIGHT CALCULATIONS

ALLOWABLE BUILDING HEIGHT PER IBC TABLE 503

ALLOWABLE NUMBER OF STORIES PER IBC TABLE 503	: 65'-0"
AUTOMATIC SPRINKLER SYSTEM INCREASE	: 15 STORIES
TOTAL ALLOWABLE BLDG HT/STORIES	: 20'-0" / 1 STORY
PROVIDED BUILDING HEIGHT	: 85'-0" / 6 STORIES

* 24'-4" IS AVERAGE OF HIGHEST ROOF SURFACE INCLUDING ROOFTOP CANOPY + MECHANICAL SCREEN - SECTION 202 (DEFINITION) + 504.3 (ROOF STRUCTURES)

ALLOWABLE BUILDING HEIGHT PER CITY OF SCOTTSDALE ORDINANCES

BUILDING HEIGHT - 157 MAX PER ORD	: 157'-0"
3 FT TOP OF CURB AT SCOTTSDALE ROAD	: 24.41 SFC / 20.61 M / 2407 MFC
AVERAGE TOP OF CURB AT SCOTTSDALE	: 24.81
ALLOWABLE BUILDING HEIGHT	: 24.81 + 40' + 118.61
BUILDING FINISH FLOOR (F.F.)	: 24.00'
HIGHEST POINT OF LOW SLOPE ROOF	: 28.31 AVE. G.S. + 24.00 FT
BUILDING HEIGHT FROM AVERAGE CORNER	: 86.02 ABOVE F.F. (HIGHEST POINT)
	: 90.61

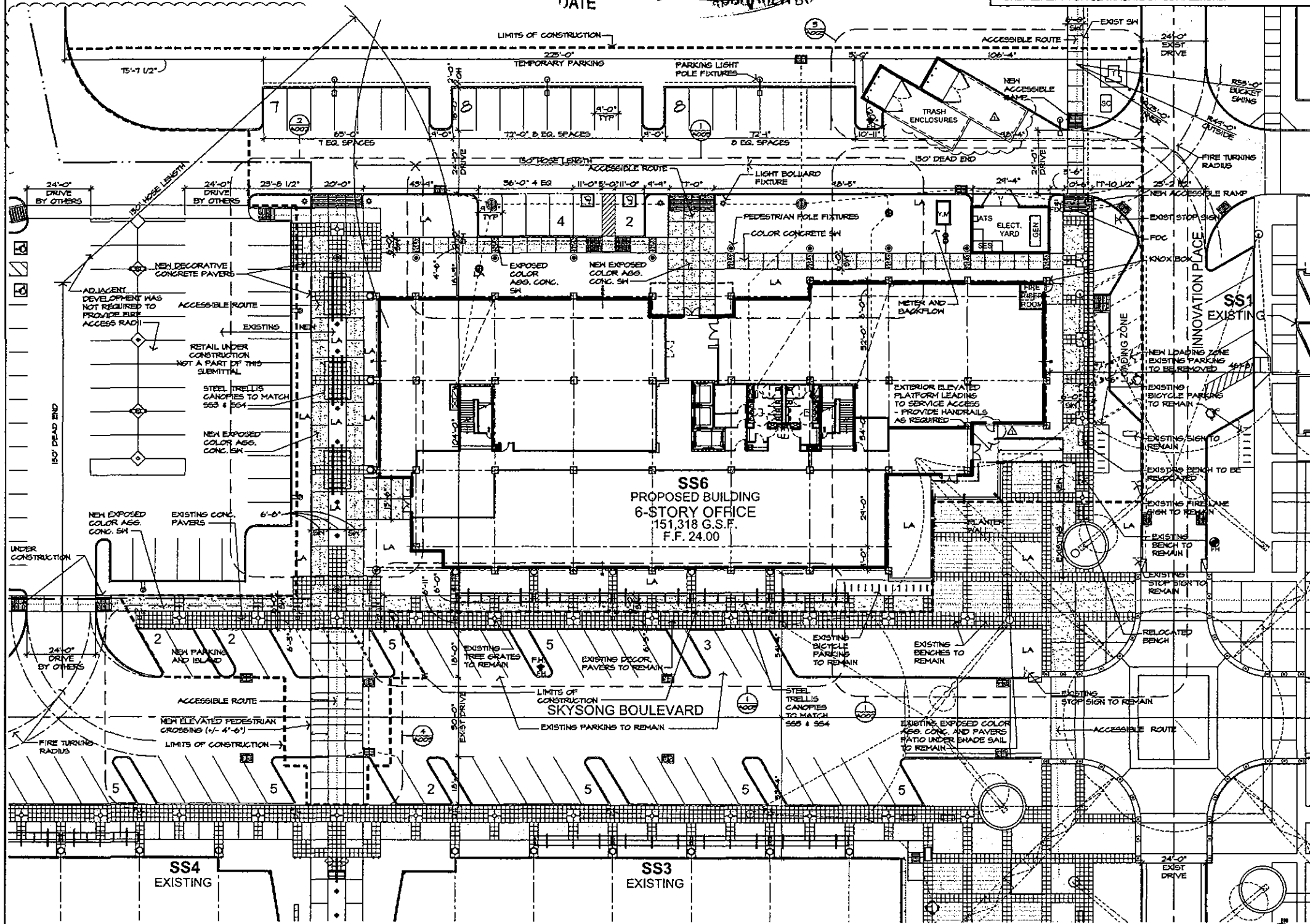
EXITING CALCULATIONS

SEE EGRESS CALCULATIONS (ON COVER SHEET) AND ALSO SHOWN ON SHEETS A110, A120, A130, A140, A150 + A160 ALONG WITH OCCUPANT LOADS AND PROVIDED TRAVEL DISTANCES

ACCESSIBILITY NOTES

2. THE SURFACE OF RAMPS AND GROUND SURFACES SHALL BE ROUGHENED OR SHALL BE OF SLIP RESISTANT MATERIALS.
3. AN ACCESSIBLE ROUTE OF TRAVEL, 3 FEET WIDE MINIMUM MUST BE PROVIDED TO ALL ACCESSIBLE EXITS OF THE BUILDING AND THE PUBLIC WAY. ACCESSIBLE ROUTES SHALL HAVE A MAXIMUM SLOPE OF 1/20, AND A MAXIMUM CROSS SLOPE OF 1/50.
4. ALL ACCESSIBLE PARKING SPACES SHALL BE OUTLINED, HAVE A CONTRASTING COLOR AND THE INTERNATIONAL WHEELCHAIR SYMBOL ON THE GROUND WITHIN THE SPACE PER THE GOVERNING AGENCIES REQUIREMENTS.
5. ALL ACCESSIBLE PARKING SPACES SHALL HAVE SIGN (MINIMUM 5 FEET ABOVE FINISHED GRADE IN FRONT OF THE SPACE) WHICH INCLUDES THE INTERNATIONAL SYMBOL OF ACCESSIBILITY.
6. ACCESSIBLE ROUTES SHALL BE WITHOUT STEPS OR CHANGES IN LEVEL GREATER THAN 1/2" WITHOUT AN APPROVED RAMP.
1. PROVIDE CODE REQUIRED EXIT SIGNAGE + ELEVATORS + STAIRS (TACTILE WHEN REQ'D) REFER TO IBC 1007.13, 1007.12, 1007.10 + ADA 103.
 - A. EXAMPLE: ELEVATOR SIGNAGE AT ELEVATOR DOORS. IN CASE OF FIRE DO NOT USE ELEVATOR, USE EXIT STAIRWAYS IF POSSIBLE OR CALL USING PHONE AT ELEVATOR LOBBY - NO AREA OF REFUGE REQUIRED / PROVIDED BY CODE PER 1007.13 EXCEPTION 2 + 1007.14 EXCEPTION 2
 - B. EXAMPLE: STAIR SIGNAGE LOCATED ON DOOR. WEST EXIT STAIR NO ROOF ACCESS LEVEL 2 FLOOR 1 TO 4
 - C. INCLUDE DIRECTIONS FOR TWO-WAY COMMUNICATION AT POINT OF COMMUNICATION.
 - SUBMIT PLANS TO ARCHITECT FOR REVIEW + APPROVAL MAY REQUIRE JURISDICTIONAL APPROVAL
 - SEE SIGNAGE DETAILS ON SHEET A401
2. WAY COMMUNICATION FOR WHEEL CHAIR USERS, DEAF AND BLIND INCLUDES CONTRASTING PHONE AND SIGNALING SYSTEM DIRECTION PLACARD FOR "USE INSTRUCTIONS" + LOCATION ID, (I.E. ADDRESS, FLOOR NUMBER, ELEVATOR #, ETC.) 202 IBC 1007.18, 1007.11 + 1007.18.2.
3. SEE DRAWINGS FOR ADDITIONAL ITEMS OF COMPLIANCE AND NOTING.

34-DR-16
APPROVED
FINAL PLANS PLANNING
 6-2-17
 DATE



1 ENLARGED SITE PLAN
 SCALE: 1" = 20'-0"
 SEE SHEET M5P FOR SITE PLAN GENERAL NOTES

Bgd
 Butler Design Group Inc.
 architects & planners
 5017 East Washington St. #107
 Phoenix, Arizona 85034
 Phone 602-957-1800

Professional Engineer
 JEFFREY L. CUTBERT
 LICENSE NO. 10009
 EXPIRES: 6/30/2017

PLAZA COMPANIES

SKYSONG PLAZA 6
 1355 NORTH SCOTTSDALE RD.
 SCOTTSDALE, ARIZONA

Zoning Case #: 25-24-2004
 Case #: 34-DR-2015
 Plan Check #: 463-17
 Date: 01.25.2017

Revisions:
 10046.914
 Drawn By: AM
 Title: **SITE PLAN**
A001

LED AREA LIGHTS - PATRIOT® (XPT3)



LED AREA LIGHTS - PATRIOT® (XPT3)

Department of Energy has verified appropriate product test data and results for use with the Lighting Facts Program. Visit www.lightingfacts.com for complete catalog sheets.

Table with columns for Luminaire Output (LPF) and Luminaire Output (LPF) for various fixture models.

Notes regarding luminaire output and test methods.

Notes regarding luminaire output and test methods.

Notes regarding luminaire output and test methods.

Notes regarding luminaire output and test methods.

Notes regarding luminaire output and test methods.

Notes regarding luminaire output and test methods.

Notes regarding luminaire output and test methods.

Notes regarding luminaire output and test methods.

Notes regarding luminaire output and test methods.

Notes regarding luminaire output and test methods.

Notes regarding luminaire output and test methods.

Notes regarding luminaire output and test methods.

Notes regarding luminaire output and test methods.

Notes regarding luminaire output and test methods.

Notes regarding luminaire output and test methods.

Notes regarding luminaire output and test methods.

Notes regarding luminaire output and test methods.

Notes regarding luminaire output and test methods.

Notes regarding luminaire output and test methods.

Notes regarding luminaire output and test methods.

Notes regarding luminaire output and test methods.

Notes regarding luminaire output and test methods.

Notes regarding luminaire output and test methods.

Notes regarding luminaire output and test methods.

Notes regarding luminaire output and test methods.

Notes regarding luminaire output and test methods.

Notes regarding luminaire output and test methods.

Notes regarding luminaire output and test methods.

Notes regarding luminaire output and test methods.

Notes regarding luminaire output and test methods.

Notes regarding luminaire output and test methods.

Notes regarding luminaire output and test methods.

Notes regarding luminaire output and test methods.

Notes regarding luminaire output and test methods.

Notes regarding luminaire output and test methods.

Notes regarding luminaire output and test methods.

Notes regarding luminaire output and test methods.

LED AREA LIGHTS - PATRIOT® (XPT3)

SAFETY - LED drivers feature inherent surge protection and over-current protection. LED drivers feature inherent surge protection and over-current protection.

SAFETY - LED drivers feature inherent surge protection and over-current protection. LED drivers feature inherent surge protection and over-current protection.

SAFETY - LED drivers feature inherent surge protection and over-current protection. LED drivers feature inherent surge protection and over-current protection.

SAFETY - LED drivers feature inherent surge protection and over-current protection. LED drivers feature inherent surge protection and over-current protection.

SAFETY - LED drivers feature inherent surge protection and over-current protection. LED drivers feature inherent surge protection and over-current protection.

SAFETY - LED drivers feature inherent surge protection and over-current protection. LED drivers feature inherent surge protection and over-current protection.

SAFETY - LED drivers feature inherent surge protection and over-current protection. LED drivers feature inherent surge protection and over-current protection.

SAFETY - LED drivers feature inherent surge protection and over-current protection. LED drivers feature inherent surge protection and over-current protection.

SAFETY - LED drivers feature inherent surge protection and over-current protection. LED drivers feature inherent surge protection and over-current protection.

SAFETY - LED drivers feature inherent surge protection and over-current protection. LED drivers feature inherent surge protection and over-current protection.

SAFETY - LED drivers feature inherent surge protection and over-current protection. LED drivers feature inherent surge protection and over-current protection.

SAFETY - LED drivers feature inherent surge protection and over-current protection. LED drivers feature inherent surge protection and over-current protection.

SAFETY - LED drivers feature inherent surge protection and over-current protection. LED drivers feature inherent surge protection and over-current protection.

SAFETY - LED drivers feature inherent surge protection and over-current protection. LED drivers feature inherent surge protection and over-current protection.

SAFETY - LED drivers feature inherent surge protection and over-current protection. LED drivers feature inherent surge protection and over-current protection.

SAFETY - LED drivers feature inherent surge protection and over-current protection. LED drivers feature inherent surge protection and over-current protection.

SAFETY - LED drivers feature inherent surge protection and over-current protection. LED drivers feature inherent surge protection and over-current protection.

SAFETY - LED drivers feature inherent surge protection and over-current protection. LED drivers feature inherent surge protection and over-current protection.

SAFETY - LED drivers feature inherent surge protection and over-current protection. LED drivers feature inherent surge protection and over-current protection.

SAFETY - LED drivers feature inherent surge protection and over-current protection. LED drivers feature inherent surge protection and over-current protection.

SAFETY - LED drivers feature inherent surge protection and over-current protection. LED drivers feature inherent surge protection and over-current protection.

SAFETY - LED drivers feature inherent surge protection and over-current protection. LED drivers feature inherent surge protection and over-current protection.

Project Name, Fixture Type, and Catalog # form.

Project Name, Fixture Type, and Catalog # form.

Project Name, Fixture Type, and Catalog # form.

Project Name, Fixture Type, and Catalog # form.

Project Name, Fixture Type, and Catalog # form.

Project Name, Fixture Type, and Catalog # form.

Project Name, Fixture Type, and Catalog # form.

Project Name, Fixture Type, and Catalog # form.

Project Name, Fixture Type, and Catalog # form.

FIXTURE 'SA'

BRAL3 product page featuring a large image of the fixture, technical drawings, and detailed specifications for housing, lamp, ballast, base plate, and anchorage.

U.S. ARCHITECTURAL LIGHTING logo and contact information.

Technical drawings for the BRAL3 fixture, including wall mount style, lamp size, and various mounting options.

Ordering Information table with columns for Optics, Lamp, Mounting, Finish, and Options.

U.S. ARCHITECTURAL LIGHTING logo and contact information.

FIXTURE 'SF' & 'SF2'

gotham 6" Evo Open Reflector product page featuring a large image of the fixture, technical drawings, and detailed specifications for optical and electrical systems.

gotham logo and contact information.

Technical drawings for the gotham 6" Evo Open Reflector, including mounting and dimensions.

Ordering Information table for the gotham 6" Evo Open Reflector.

gotham logo and contact information.

FIXTURE 'SM' & 'SM1'

Handwritten note: 34-DR-16 APPROVED FINAL PLANS PLANNING 6-2-17 DATE APPROVED BY

Butler Design Group Inc. logo and contact information.

PLAZA COMPANIES logo and contact information.

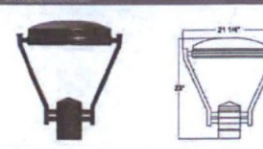
SKYSONG PLAZA 6 1365 NORTH SCOTTSDALE RD. SKYSONG SCOTTSDALE, AZ

Project Name, Plan Check #, Date, Revisions, and Title: LIGHT FIXTURE CUT SHEETS E003.

McCREW CONSULTING ENGINEERS, INC. logo and contact information.

ANP Lighting Specifications LA233

Project: _____
 Fixture Type: _____
 Quantity: _____
 Customer: _____



LA233 1 PHTL04 D TS 27K PC 72

LA233 Fixed emergency design. Available in 4 sizes for a wide variety of applications. Features low shaft and provides high performance lighting for both pool and wet mount applications.

1	2	3	4	5	6	7
1	2	3	4	5	6	7

1. FIXTURE ORIENTATION

2. WATTAGE

MODULE	WATTAGE	CATALOG #
24w	34W	MO24L
36w	34W	MO36L
48w	34W	MO48L
72w	34W	MO72L

3. DIMMING or NO DIMMING

4. MODULE OPTICAL

5. ACCESSORIES

© 2016 ANP Lighting. All rights reserved. These specifications are intended for general purposes only. ANP reserves the right to change material or design, without prior notice, in a continuing effort to upgrade its products. 1-800-548-3227 ANPlighting.com

ANP Lighting Specifications LA233

Project: _____
 Fixture Type: _____
 Quantity: _____
 Customer: _____

MODULE SPECIFICATION:

- Efficiency ranges from 87-125 lumens per watt
- Dimmable 0% - 100%
- Life: L70 50,000 hours
- Color temp: 2700K, 3000K, 3500K and 4000K
- CR> 90
- 5 year limited warranty*

PLATFORM SPECIFICATION:

- Efficiency ranges from 85-110 lumens per watt
- Customized lens provides directed light
- Operating temperature of 0-50°C in 50°C
- Dimmable 0% - 100%
- Life: L70 50,000 hours
- Color temp: 2700K, 3000K, 4000K and 5000K
- CR> 90 @ 5,000K
- Parallel circuitry ensures consistent light output in the event of single LED failure
- 5 year limited warranty*

MODULE DRIVER SPECIFICATION:

- Operates at 120VAC
- Built in surge protection
- Constant current output 50/50/40°C
- Driver Efficiency > 81% power factor above 95%
- 120-277 volt
- 5 year limited warranty*

PLATFORM DRIVER SPECIFICATION:

- Operates at 120VAC
- Built in surge protection
- Constant current output 50/50/40°C
- Driver Efficiency > 80% power factor above 95%
- 120-277 volt
- 5 year limited warranty*

OPTICS

ACCESSORIES

© 2016 ANP Lighting. All rights reserved. These specifications are intended for general purposes only. ANP reserves the right to change material or design, without prior notice, in a continuing effort to upgrade its products. 1-800-548-3227 ANPlighting.com

FIXTURE 'SS'

WAC LANDSCAPE LIGHTING

3" INGROUND 120V 5032

Fixture Type: _____
 Catalog Number: _____
 Project: _____
 Location: _____



PRODUCT DESCRIPTION
 Landscape Wet Wall Luminaire

FEATURES

- Adjustable beam angle
- Integral dimmer
- IP67 rated, protected from temporary immersion under water
- Driver over up to 4500lm
- Solid die-cast brass or corrosion resistant aluminum
- Available constant power kit
- 4" total size and size sets included
- Maximum constant current output against voltage drop
- UL 1598 listed
- Not suitable to use with external dimmers

ORDERING NUMBER

Color Temp	Finish
30	80

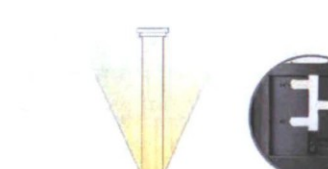
Example: 5032-30

© 2016 ANP Lighting. All rights reserved. These specifications are intended for general purposes only. ANP reserves the right to change material or design, without prior notice, in a continuing effort to upgrade its products. 1-800-548-3227 ANPlighting.com

WAC LANDSCAPE LIGHTING

3" INGROUND 120V 5032

Fixture Type: _____
 Catalog Number: _____
 Project: _____
 Location: _____



PRODUCT DESCRIPTION
 Landscape Wet Wall Luminaire

FEATURES

- Adjustable beam angle
- Integral dimmer
- IP67 rated, protected from temporary immersion under water
- Driver over up to 4500lm
- Solid die-cast brass or corrosion resistant aluminum
- Available constant power kit
- 4" total size and size sets included
- Maximum constant current output against voltage drop
- UL 1598 listed
- Not suitable to use with external dimmers

ORDERING NUMBER

Color Temp	Finish
30	80

Example: 5032-30

© 2016 ANP Lighting. All rights reserved. These specifications are intended for general purposes only. ANP reserves the right to change material or design, without prior notice, in a continuing effort to upgrade its products. 1-800-548-3227 ANPlighting.com

FIXTURE 'ST'

P61 | Wet Listed, Surface & Wall

PRUDENTIAL LTD.

Fixture Type: _____
 Catalog Number: _____
 Project: _____
 Location: _____



PRODUCT DESCRIPTION
 Multi-purpose outdoor lighting

FEATURES

- Adjustable beam angle
- Integral dimmer
- IP67 rated, protected from temporary immersion under water
- Driver over up to 4500lm
- Solid die-cast brass or corrosion resistant aluminum
- Available constant power kit
- 4" total size and size sets included
- Maximum constant current output against voltage drop
- UL 1598 listed
- Not suitable to use with external dimmers

ORDERING NUMBER

Color Temp	Finish
30	80

Example: P61-30

© 2016 ANP Lighting. All rights reserved. These specifications are intended for general purposes only. ANP reserves the right to change material or design, without prior notice, in a continuing effort to upgrade its products. 1-800-548-3227 ANPlighting.com

P61 | Wet Listed, Surface & Wall

PRUDENTIAL LTD.

Fixture Type: _____
 Catalog Number: _____
 Project: _____
 Location: _____



PRODUCT DESCRIPTION
 Multi-purpose outdoor lighting

FEATURES

- Adjustable beam angle
- Integral dimmer
- IP67 rated, protected from temporary immersion under water
- Driver over up to 4500lm
- Solid die-cast brass or corrosion resistant aluminum
- Available constant power kit
- 4" total size and size sets included
- Maximum constant current output against voltage drop
- UL 1598 listed
- Not suitable to use with external dimmers

ORDERING NUMBER

Color Temp	Finish
30	80

Example: P61-30

© 2016 ANP Lighting. All rights reserved. These specifications are intended for general purposes only. ANP reserves the right to change material or design, without prior notice, in a continuing effort to upgrade its products. 1-800-548-3227 ANPlighting.com

FIXTURE 'SU'

34-DR-16
APPROVED
 FINAL PLANS PLANNING
 6-2-17
 DATE

McCREW CONSULTING ENGINEERS, INC.
 ELECTRICAL ENGINEERING
 2004 N. 19TH AVE. BLDG. 10 SUITE 22
 PHOENIX, ARIZONA 85027
 PHONE (602) 957-2114
 FAX (602) 957-2114
 MCI JOB # 16037

BIG

Butler Design Group Inc.
 architects & planners
 5017 East Washington St. #107
 Phoenix, Arizona 85034
 Phone 602-957-1800

PLAZA COMPANIES

SKYSONG PLAZA 6

1365 NORTH SCOTTSDALE RD., AZ

SKYSONG

Case #: _____
 Plan Check #: _____
 Date: _____

Revisions:

Number: _____
 Drawn By: _____

Title: LIGHT FIXTURE CUT SHEETS

E004