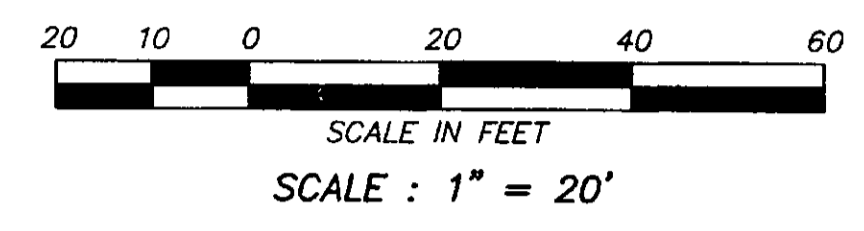
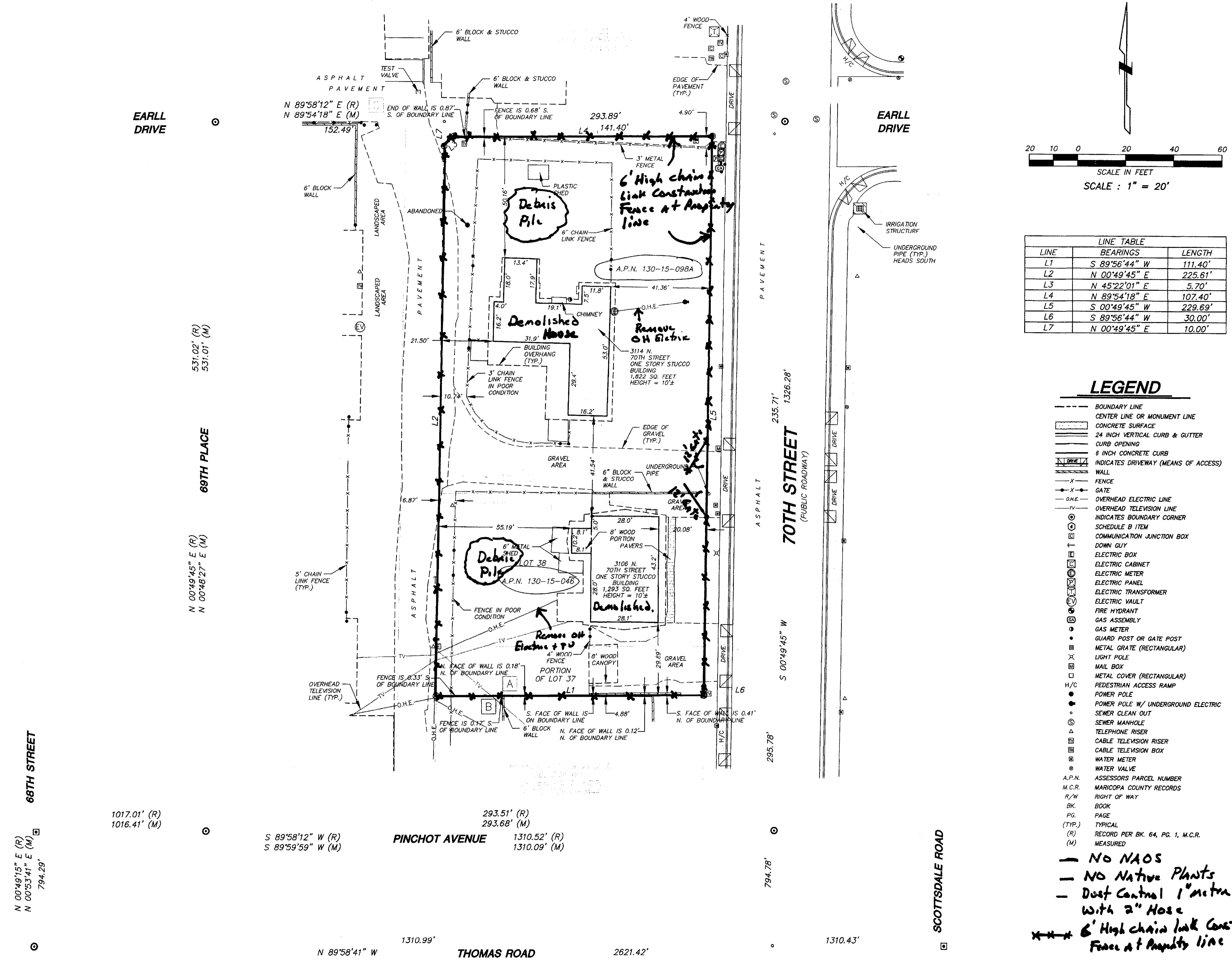


Final Plans

# Site Plan 3106 + 3114 N 70<sup>th</sup> ST



LINE	BEARINGS	LENGTH
L1	S 89°56'44" W	111.40'
L2	N 00°49'45" E	225.61'
L3	N 45°22'01" E	5.70'
L4	N 89°54'18" E	107.40'
L5	S 00°49'45" W	229.69'
L6	S 89°56'44" W	30.00'
L7	N 00°49'45" E	10.00'

## LEGEND

- BOUNDARY LINE
- CENTER LINE OR MONUMENT LINE
- CONCRETE SURFACE
- 24 INCH VERTICAL CURB & GUTTER
- CURB OPENING
- 6 INCH CONCRETE CURB
- INDICATES DRIVEWAY (MEANS OF ACCESS)
- WALL
- FENCE
- GATE
- O.H.E. OVERHEAD ELECTRIC LINE
- O.T.V. OVERHEAD TELEVISION LINE
- INDICATES BOUNDARY CORNER
- SCHEDULE B ITEM
- COMMUNICATION JUNCTION BOX
- DOWN GUY
- ELECTRIC BOX
- ELECTRIC CABINET
- ELECTRIC METER
- ELECTRIC PANEL
- ELECTRIC TRANSFORMER
- ELECTRIC VAULT
- FIRE HYDRANT
- GAS ASSEMBLY
- GAS METER
- GUARD POST OR GATE POST
- METAL GRATE (RECTANGULAR)
- LIGHT POLE
- MAIL BOX
- METAL COVER (RECTANGULAR)
- PEDESTRIAN ACCESS RAMP
- POWER POLE
- POWER POLE W/ UNDERGROUND ELECTRIC
- SEWER CLEAN OUT
- SEWER MANHOLE
- TELEPHONE RISER
- CABLE TELEVISION RISER
- CABLE TELEVISION BOX
- WATER METER
- WATER VALVE
- A.P.N. ASSESSORS PARCEL NUMBER
- M.C.R. MARICOPA COUNTY RECORDS
- R/W RIGHT OF WAY
- BK. BOOK
- PG. PAGE
- (TYP.) TYPICAL
- (R) RECORD PER BK. 64, PG. 1, M.C.R.
- (M) MEASURED

NOTE: No protected native plants will be affected by construction.

**APPROVED**  
**FINAL PLANS PLANNING**  
*Adornis*  
 DATE: *Demo* APPROVED BY: *Travis Lindsey*

Planning Reviewed By:  
 Andrew Chin (480) 312-7828  
 Email: achin@scottsdale.gov

CASE#: 48-DR-2016

\* Take photos + provide dimensioned drawings of existing structure - per Brad Carr

CITY OF SCOTTSDALE  
 BUILDING PLANS  
 THESE PLANS HAVE BEEN REVIEWED AND ARE READY FOR A PERMIT.  
 THIS DOES NOT AUTHORIZE VIOLATIONS OF ANY CODE OR ORDINANCE.

*Travis Lindsey*  
 City of Scottsdale Plans Examiner  
 480-312-4207 office  
 480-312-9219 fax  
 tlindsey@scottsdaleaz.gov

NO NAOS  
 NO Native Plants  
 Dust Control 1" meter with 2" Hose  
 6' High chain link Construction Fence at Property Line