

**Final Approved Stamped Plans  
Full Size**

**HARDWARE SCHEDULE**

GROUP #1 - EXTERIOR EGRESS DOOR		
QTY.	DESCRIPTION	NUMBER - FINISH
3	HINGES	T4A3386 4 1/2"x4 1/2" NRP - 32D
1	EXIT DEVICE	V40XEB W/ EXTERIOR TRIM
		03A1U - 630
1	MORTISE CYLINDER	K620 1 3/8" - 626
1	CYLINDER CORE	K600 - 626
1	CLOSER	UNI-4410 - 603
1	KICK PLATE	KP50 12"x34" B4E - 630
1	THRESHOLD	MCK11A 36" - AL
1	SWEEP	MCK13A 36" - AL
1	RAIN DRIP	MCK346 40" - AL
1	WEATHERSTRIP	MCK303AS (2)x84" (1)x36" - AL
1	DOOR VIEWER	DV3 190" - 626

GROUP #2 - TOILET ROOMS		
QTY.	DESCRIPTION	NUMBER - FINISH
6	HINGES	BB275-NRP 4 1/2"x4 1/2" - 26D
2	PRIVACY SET	AL400-SAT - 626
2	WALL STOP	403 - 626

GROUP #3 - ALUMINUM STOREFRONT DOORS		
QTY.	DESCRIPTION	NUMBER - FINISH
3	OFFSET PIVOTS	OLDCASTLE GLASS VISTAWALL
1	THRESHOLD	RECCO - FULL WIDTH OF DOOR
1	CLOSER	LCN 4030
1	DEADLOCK W/ FACEPLATE	ADAMS-RITE 1050-A
1	RAIN DRIP	FEMKO - FULL WIDTH OF DOOR
1	SIGN	TRIMCO
1	CYLINDER	VAP STANDARD CLEAR
1	BB PUSH BAR	VAP STANDARD CLEAR
1	1" THUMBTURN	VAP STANDARD CLEAR
1	FLOOR MTD DOOR STOP	IV65 F6438

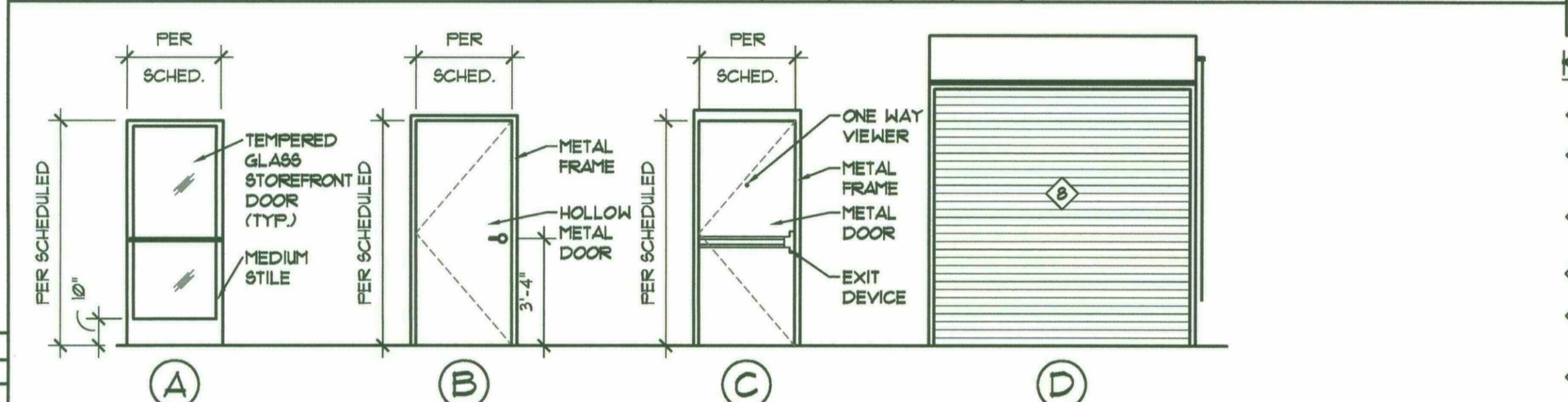
GROUP #4 - OVERHEAD RECEIVING DOOR		
QTY.	DESCRIPTION	NUMBER - FINISH
1	PADLOCK	C955-2 FIC - 606

GROUP #5 - TRASH ENCLOSURE DOOR		
QTY.	DESCRIPTION	NUMBER - FINISH
4	RICHARD WILCOX HINGE	0524.00021 - BLK
2	RICHARD WILCOX CANE BOLT	0524.00021 - BLK
2	LAWRENCE BROS FULL	CD1200 - BLK
1	LAWRENCE BROS HASP	CD1850 - 6"
1	PADLOCK	C955-2 FIC - 606
1	CYLINDER CORE	(hardware number to be determined)

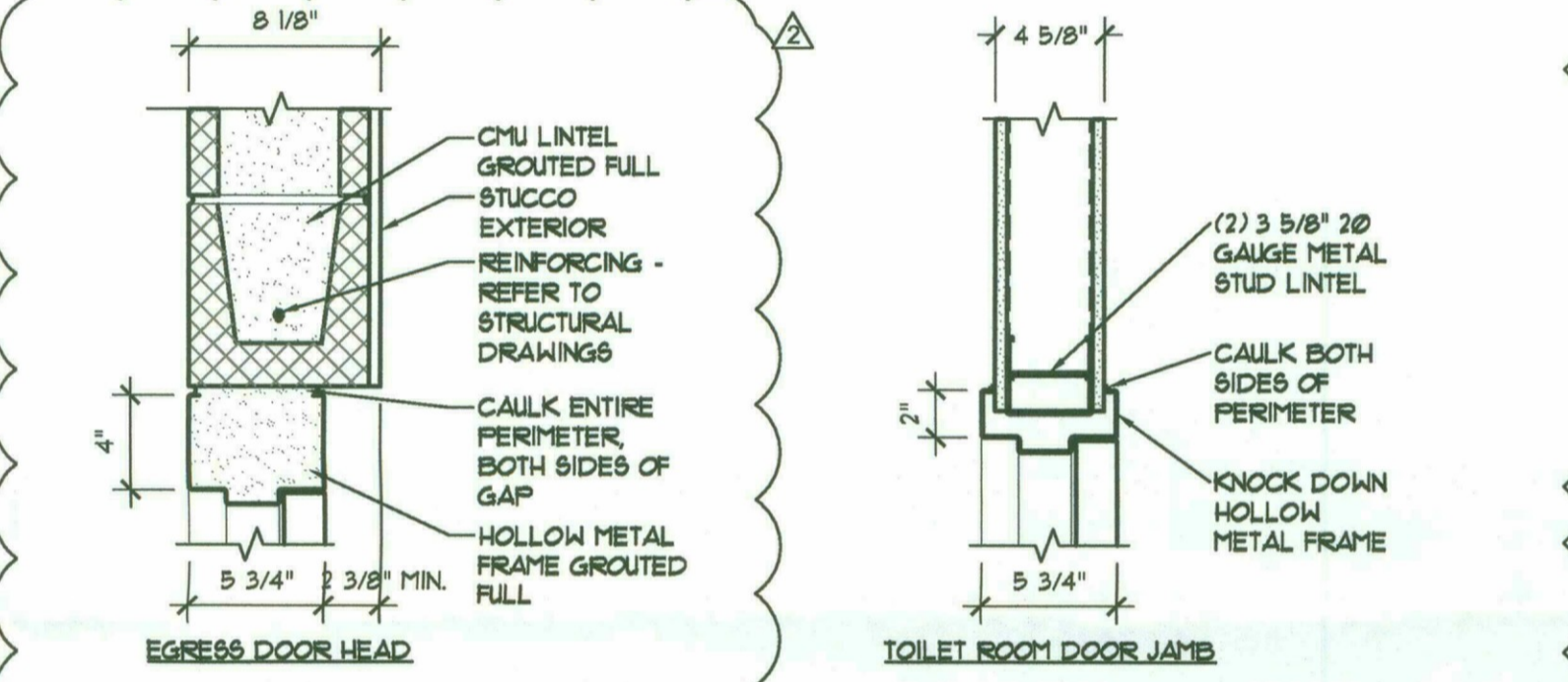
- NOTES**
- ALL DOOR HARDWARE SHALL BE SATIN NICKEL FINISH OR BRUSHED ALUM. FINISH
  - CONTROLS AND OPERATING MECHANISMS SHALL BE OPERABLE WITH ONE HAND AND SHALL NOT REQUIRE TIGHT GRASPING, PINCHING, OR TWISTING OF THE WRIST. THE FORCE REQUIRED TO ACTIVATE CONTROLS SHALL BE NO GREATER THAN 5LB. NO THUMB TURN PERMITTED.
  - AUDIBLE DETEX (V40) AT ALL SECONDARY EGRESS DOORS
  - ALL HARDWARE LISTED AS BASIS OF DESIGN. SUBSTITUTES WILL BE CONSIDERED IF EQUAL TO SPECIFIED HARDWARE.
  - FLOOR STOPS IN VESTIBULE SHALL BE LOCATED TO PREVENT DOORS FROM HITTING ADJACENT GLAZING.
  - THUMB TURN IS PERMITTED IF THE FOLLOWING SIGNAGE IS PROVIDED MIN 1" LETTERS STATING "THIS DOOR SHALL REMAIN UNLOCKED WHEN BUILDING IS OCCUPIED"

**DOOR SCHEDULE**

DOOR #	DOOR LOCATION	DOOR SIZE	MATERIAL		DOOR ELEV.	FRAME	HARDWARE	NOTES	
			DOOR	FRAME					
101	STOREFRONT	3'-0" X 7'-0" X 1 3/4"	AL.	AL.	A	-	3	FRAME BY DOOR MFR. / VAP STANDARD CLEAR / PROVIDE FULLY ACCESSIBLE HARDWARE	
101B	SALES	3'-0" X 7'-0" X 1 3/4"	HM.	WELDED HM.	C	3/A2	3/A2	1	
101C	STAGING	3'-0" X 7'-0" X 1 3/4"	HM.	WELDED HM.	C	3/A2	3/A2	1	
102	WOMEN'S RESTROOM	3'-0" X 7'-0" X 1 3/4"	HM.	K.D. HM.	B	4/A2	4/A2	2	UNDERCUT DOOR 1" FOR EXHAUST AIR MAKE-UP
103	MEN'S RESTROOM	3'-0" X 7'-0" X 1 3/4"	HM.	K.D. HM.	B	4/A2	4/A2	2	UNDERCUT DOOR 1" FOR EXHAUST AIR MAKE-UP
104	STAGING	8'-0" X 9'-4"	GALV. STL.	STL.	D	-	2/A2	4	FRAME BY DOOR MFR. (R-VALUE = 0.25 / U-VALUE = 0.11)
-	TRASH ENCLOSURE	-	WD.	STL.	-	-	-	5	REFER TO CIVIL DRAWINGS



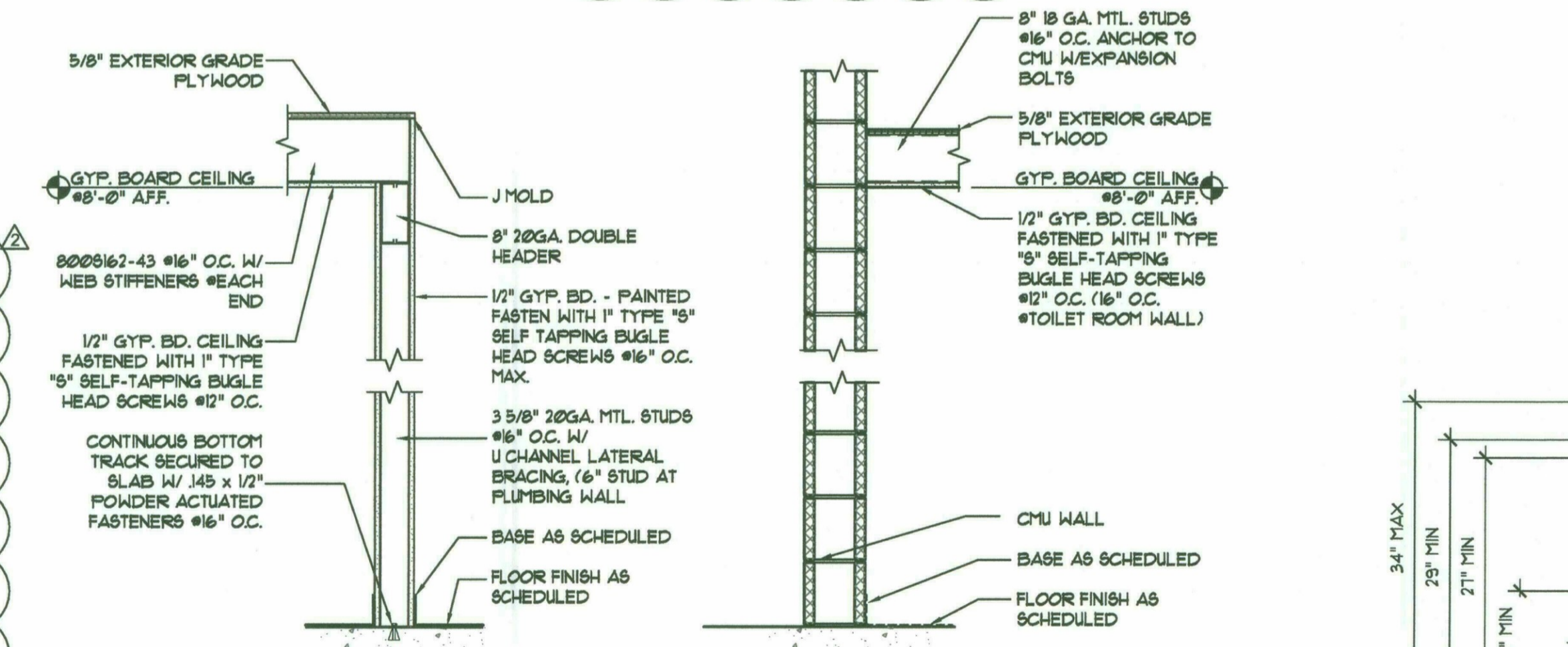
**1 DOOR ELEVATIONS**  
SCALE: 1/4" = 1'-0"



**2 JAMB DETAIL @ CMU**  
SCALE: 1/2" = 1'-0"

**3 JAMB/HEAD DETAIL**  
SCALE: 1/2" = 1'-0"

**4 JAMB/HEAD DETAIL**  
SCALE: 1/2" = 1'-0"



**1 PARTITION TYPE 1**

**2 PARTITION TYPE 2**

**6 PARTITION TYPES**  
SCALE: 3/4" = 1'-0"

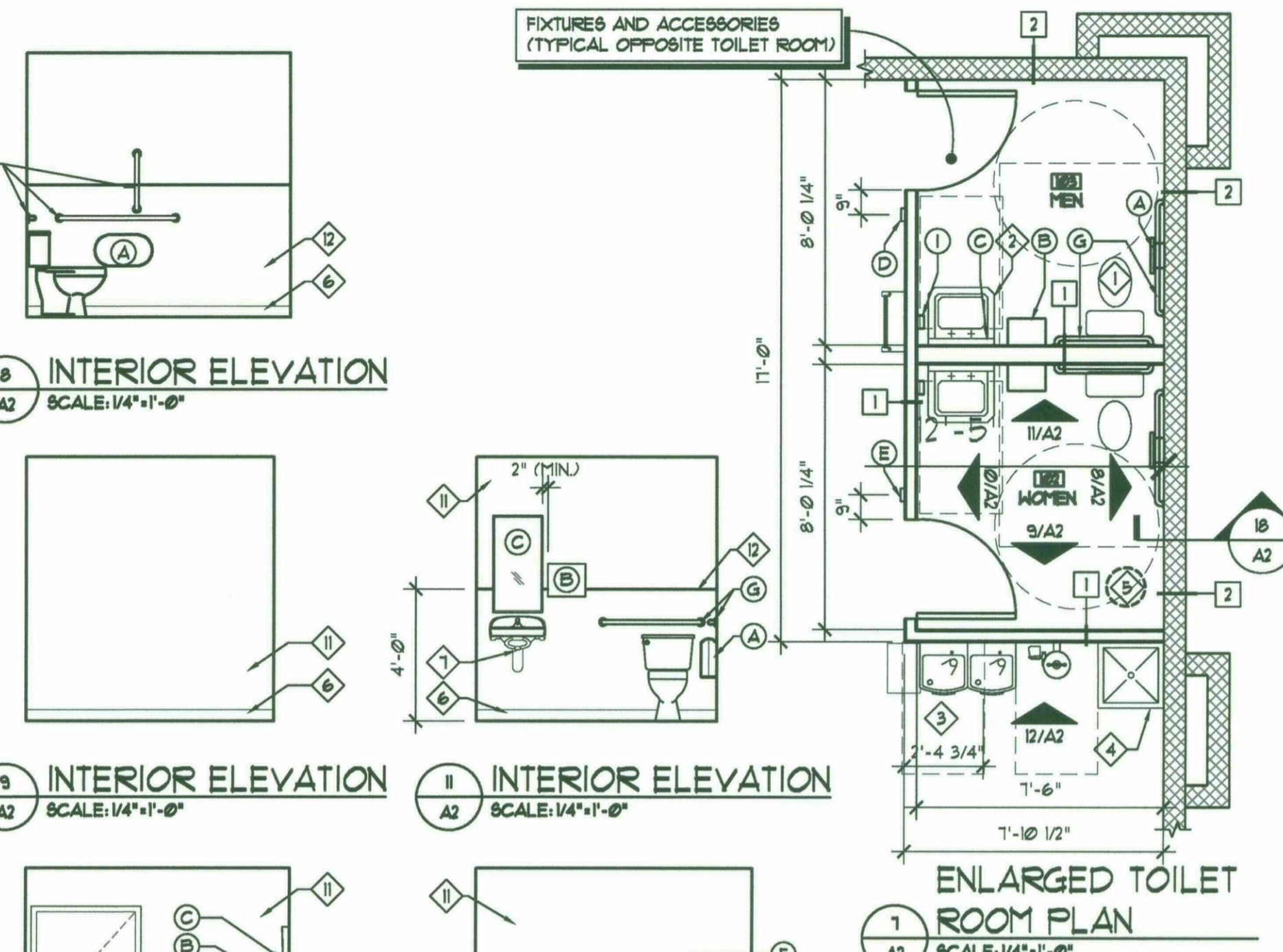
**ACCESSORY SCHEDULE**

LABEL	DESCRIPTION
(A)	ADA COMPLIANT TOILET TISSUE DISPENSER
(B)	ADA COMPLIANT PAPER TOWEL DISPENSER
(C)	MIRROR, 18"x36" W/METAL RIM
(D)	ADA COMPLIANT "MEN" RESTROOM SIGN MOUNT AT 60" AFF. TO BASELINE OF LOWEST TACTILE CHARACTER.
(E)	ADA COMPLIANT "WOMEN" RESTROOM SIGN MOUNT AT 60" AFF. TO BASELINE OF LOWEST TACTILE CHARACTER.
(F)	ADA COMPLIANT "EMERGENCY EYE WASH" SIGN
(G)	GRAB BAR, (2) AS1 19501x36 (2) AS1 19501x42 (2) AS1 19501x18
(H)	BRADLEY WALL MTD. EMERGENCY EYEWASH 1818-220 (GRAINGER ITEM #P267). REFER TO RESPONSIBILITY MATRIX FOR ORDERING INFORMATION. REFER TO PLUMBING DRAWINGS.
(I)	SOAP DISPENSER

- NOTES**
- TOILET TISSUE DISPENSER, PAPER TOWEL DISPENSER AND SOAP DISPENSER FURNISHED BY AAP AND INSTALLED BY G.C. REFER TO RESPONSIBILITY MATRIX FOR ORDERING INFORMATION.
  - TOILET ACCESSORIES FURNISHED AND INSTALLED BY G.C.

**KEY NOTES:**

- WATER CLOSET, REFER TO PLUMBING DRAWINGS FOR ADDITIONAL INFORMATION.
- WALL MOUNTED LAVATORY, REFER TO PLUMBING DRAWINGS FOR ADDITIONAL INFORMATION.
- BI-LEVEL DRINKING FOUNTAIN WITH CANE APRON, REFER TO PLUMBING DRAWINGS FOR ADDITIONAL INFORMATION. PROVIDE CANE APRON ON HIGH FOUNTAIN.
- MOP SINK REFER TO PLUMBING DRAWINGS FOR ADDITIONAL INFORMATION.
- WATER HEATER ABOVE, REFER TO PLUMBING DRAWINGS FOR ADDITIONAL INFORMATION.
- 4" VINYL BASE, REFER TO MATERIAL SCHEDULE ON SHEET A1 FOR ADDITIONAL INFORMATION.
- PLUMBING CONTRACTOR TO PROVIDE ADA PIPE WRAP AS SPECIFIED ON ALL EXPOSED PLUMBING SUPPLY AND DRAIN LINES BELOW LAVATORY. REFER TO PLUMBING DRAWINGS FOR ADDITIONAL INFORMATION.
- STAGING TO EXTERIOR DOOR - PROVIDE COILING STEEL DOOR BY OVERHEAD DOOR, SERIES 625 (HEADER BY G.C.)  
-24 GAUGE DOOR IN FACTORY GRAY BAKED ENAMEL  
-3" STRUCTURAL STEEL DOOR ANGLE GUIDES  
-2" SLIDE BOLT LOCKS  
-DOUBLE ANGLE STEEL BOTTOM BAR WITH BULB TYPE WEATHERSEAL  
-EXTERIOR SIDE GUIDE WEATHERSEAL  
-HOOD BAFFLE SHALL BE INSTALLED DIRECTLY TO THE INSIDE FACE OF THE MASONRY WALL AND SILICONE CAULKED AROUND THE ENTIRE PERIMETER. INSTALL AN EXTERIOR LINTEL BRUSH SEAL TO LINTEL (WOOD BLOCKING SHALL NOT BE USED). STRUCTURAL HEADER BY GENERAL CONTRACTOR
- CONTINUOUS 2x8 BLOCKING
- FLUSH VALVE HANDLE SHALL BE MOUNTED ON WIDE SIDE OF TOILET AREA, REFER TO PLUMBING DRAWINGS FOR ADDITIONAL INFORMATION.
- PROVIDE MOISTURE RESISTANT PAINTED, GYPSUM WALL BOARD AT ALL RESTROOM, CLEANING, AND EMC WALLS.
- FRP. REFER TO MATERIAL SCHEDULE FOR ADDITIONAL INFORMATION.



**ENLARGED TOILET ROOM PLAN**  
SCALE: 1/4" = 1'-0"

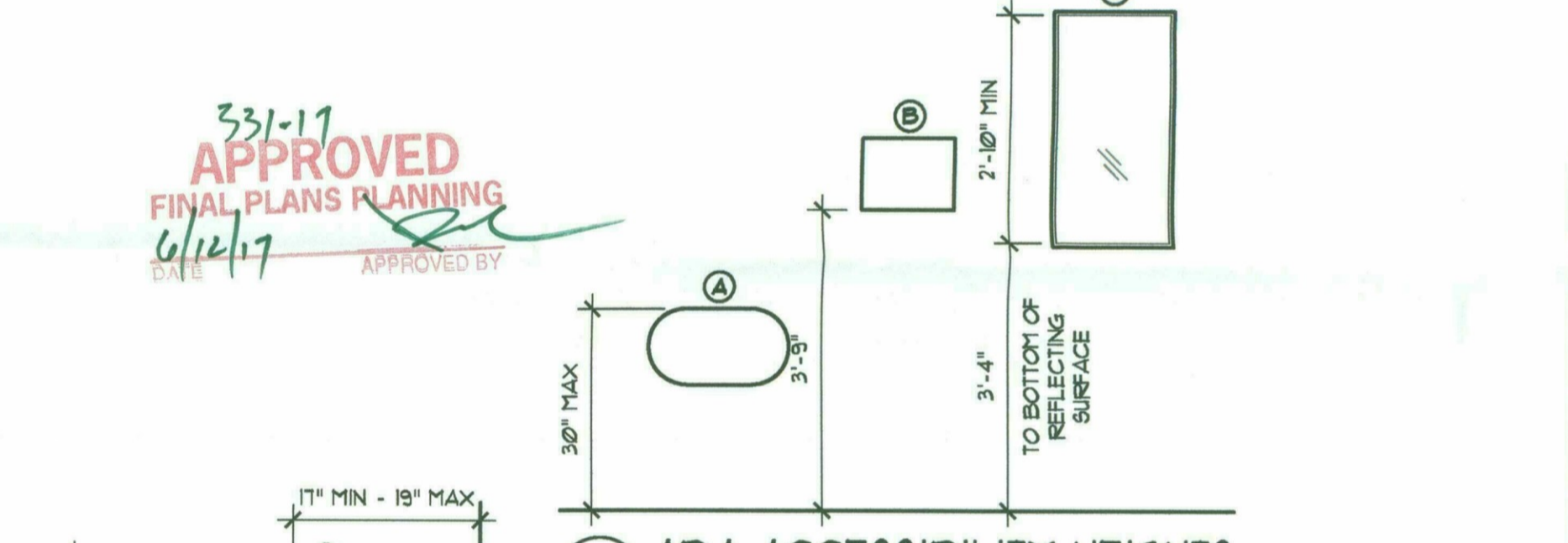


**9 INTERIOR ELEVATION**  
SCALE: 1/4" = 1'-0"

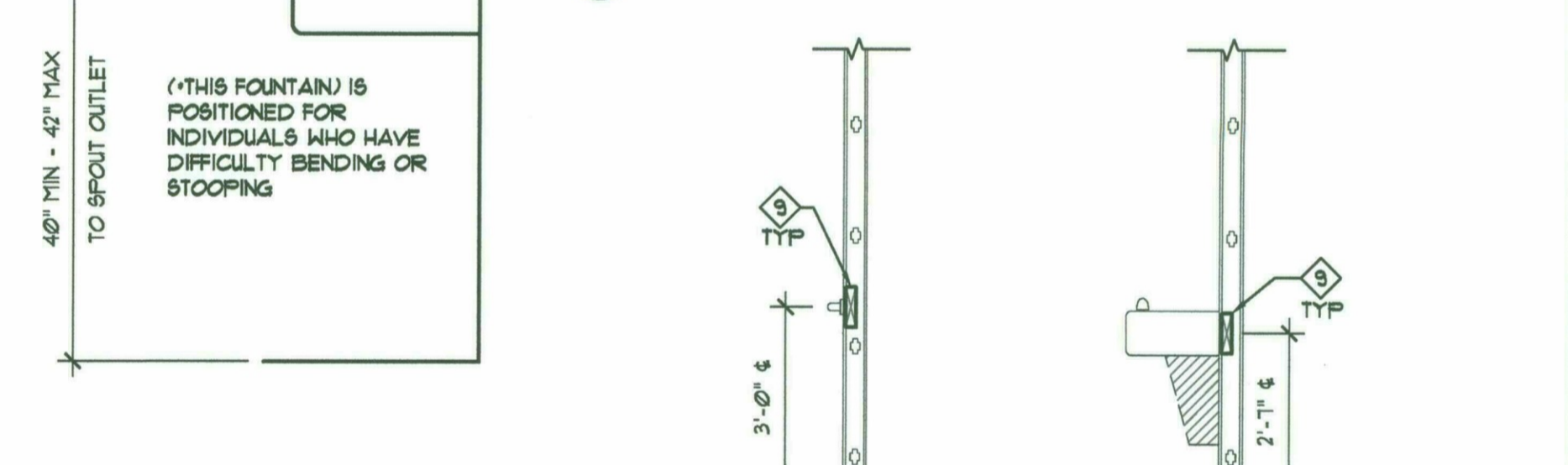
**10 INTERIOR ELEVATION**  
SCALE: 1/4" = 1'-0"

**11 INTERIOR ELEVATION**  
SCALE: 1/4" = 1'-0"

**12 INTERIOR ELEVATION**  
SCALE: 1/4" = 1'-0"



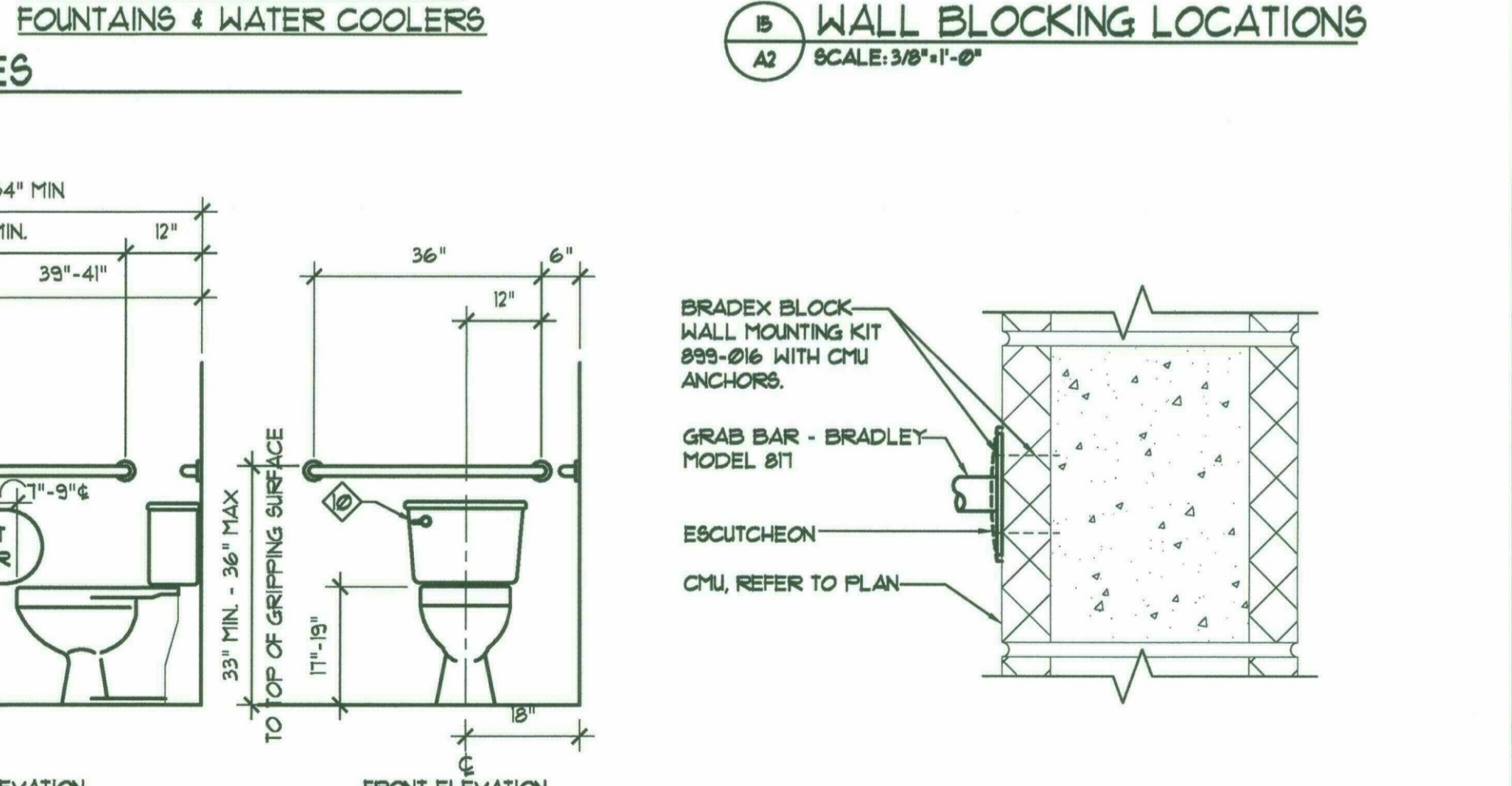
**13 ADA ACCESSIBILITY HEIGHTS**  
SCALE: 1/2" = 1'-0"



**14 WATER COOLER CLEARANCES**  
SCALE: 3/4" = 1'-0"

**STANDARD HEIGHT DRINKING FOUNTAINS & WATER COOLERS**

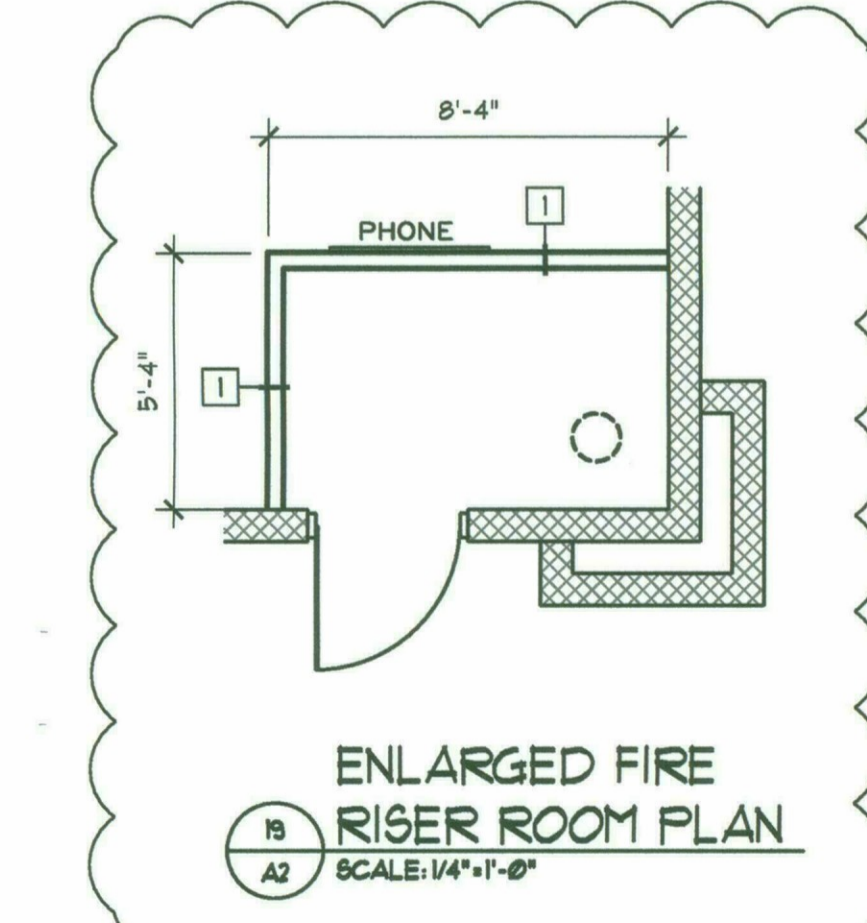
**15 WALL BLOCKING LOCATIONS**  
SCALE: 3/8" = 1'-0"



**16 H/C LAVATORY CLEARANCES**  
SCALE: 3/4" = 1'-0"

**17 ADA ACCESSIBILITY**  
SCALE: 1/2" = 1'-0"

**18 GRAB BAR CONNECTION DETAIL**  
SCALE: 3" = 1'-0"



**15 ENLARGED FIRE RISER ROOM PLAN**  
SCALE: 1/4" = 1'-0"

**CaCo architecture**

ARCHITECT:  
CaCo ARCHITECTURE, LLC  
521 N. RINGBROOK BLVD., SUITE 500  
DALLAS, TX 75207

MEP ENGINEER:  
MEP SERVICES  
1800 N. CENTRAL EXP., SUITE M-2170  
DALLAS, TX 75208

STRUCTURAL ENGINEER:  
STRUTHERS-SCHNEIDER, INC.  
15441 KNOLL TRAIL, SUITE 120  
DALLAS, TX 75248 (214) 461-9831

**Advance Auto Parts**

15515 N. HAYDEN ROAD  
SCOTTSDALE, ARIZONA 85260

STORE # 107919

REVISIONS	DESCRIPTION

DATE	GROSS SQ. FT.
12-06-16	7,022 S.F.

PROJECT # P1639.001  
DRAWN BY: SWH  
CHECK BY: EJC

ALL REPORTS, PLANS, SPECIFICATIONS, FIELD DATA, NOTES AND OTHER DOCUMENTS, INCLUDING ALL DOCUMENTS ON ELECTRONIC MEDIA, PREPARED BY THE DESIGN PROFESSIONAL, AS INSTRUMENTS OF SERVICE SHALL REMAIN THE PROPERTY OF THE DESIGN PROFESSIONAL. DISSEMINATION MAY NOT BE MADE WITHOUT PRIOR CONSENT OF THE DESIGN PROFESSIONAL. ALL DESIGN LAW RIGHTS OF COPYRIGHT AND OTHERWISE, ARE HEREBY SPECIFICALLY RESERVED.

REGISTERED ARCHITECT  
20649  
20PLANS  
ARCHITECTURE  
ARIZONA, LLC

EXPIRES 12/31/18  
NOT FOR CONSTRUCTION

**A2**



REV	DATE	DESCRIPTION
1	01/20/17	ADDRESS UPDATE
2	03/28/17	CITY COMMENTS

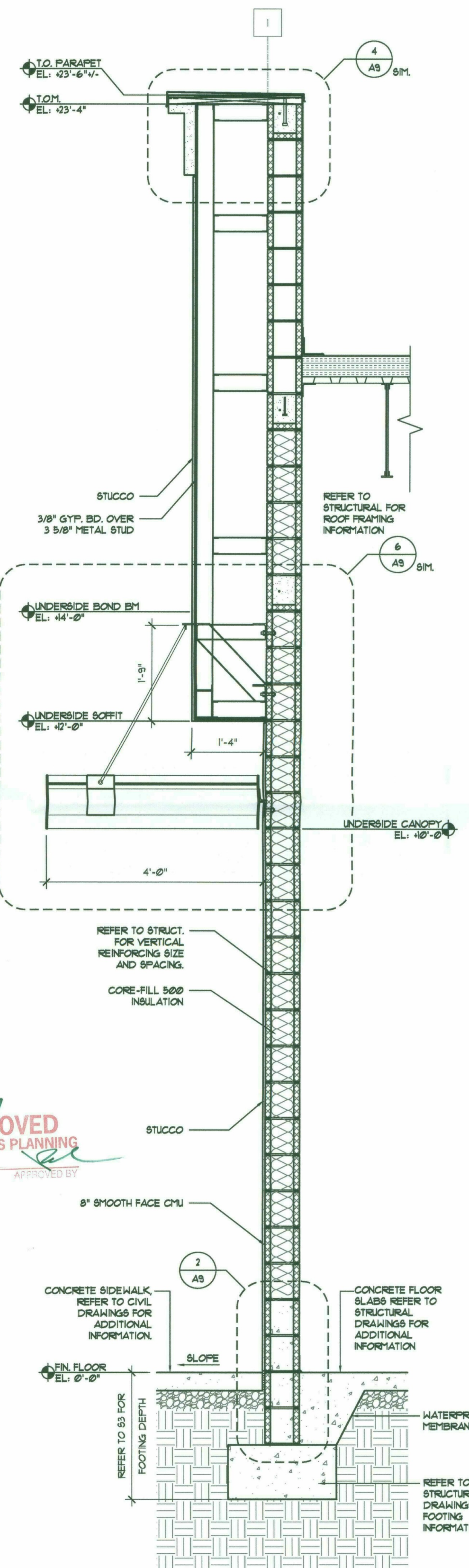
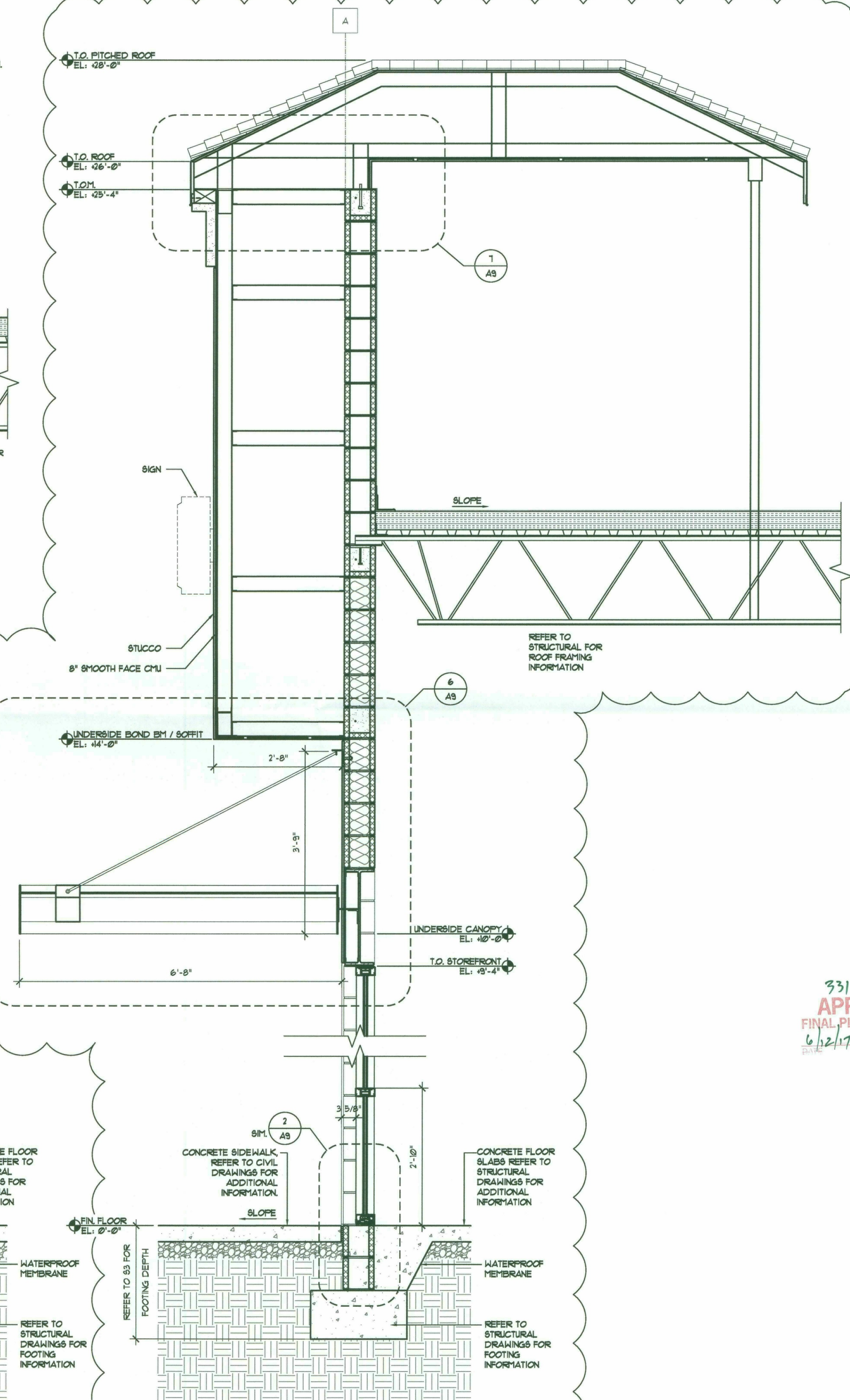
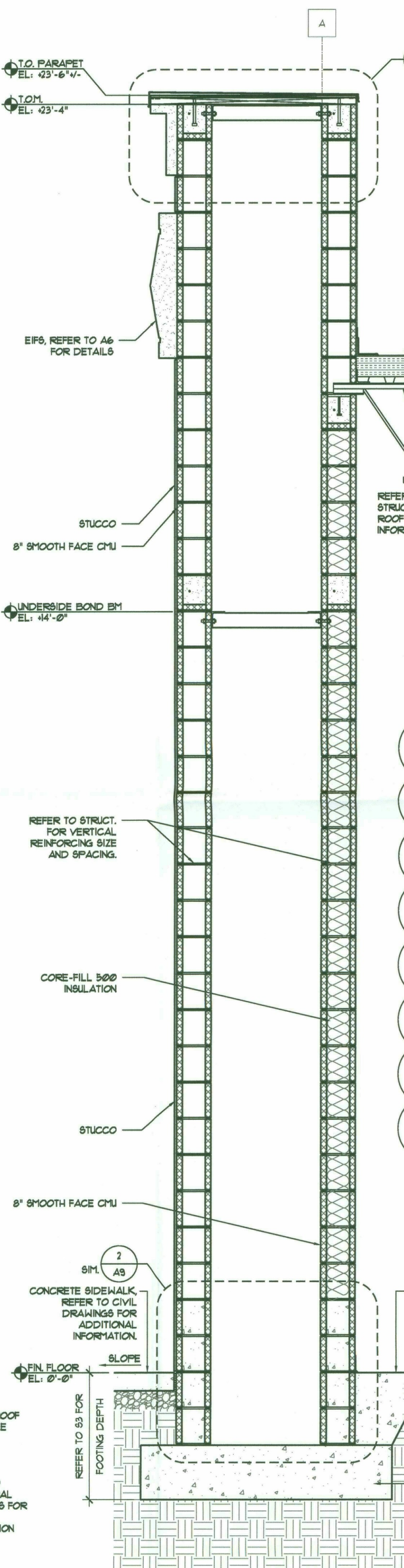
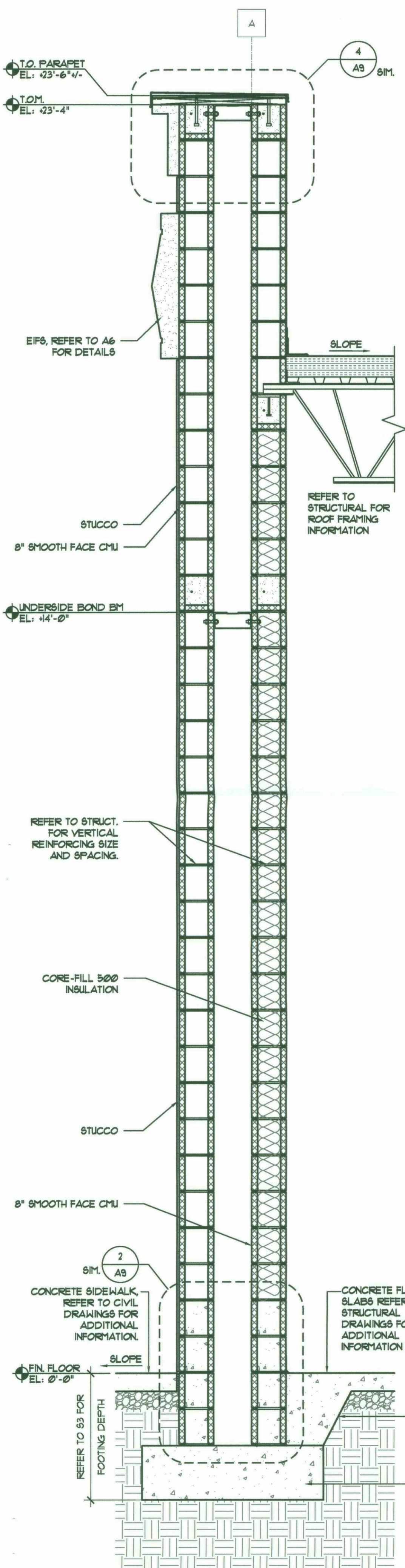
DATE	12-06-16	GROSS SQ. FT.	7,022 S.F.
PROJECT #	P1639.001		
DRAWN BY:	SWH		
CHECKED BY:	EJC		

ALL REPORTS, PLANS, SPECIFICATIONS, FIELD DATA, NOTES AND OTHER DOCUMENTS, INCLUDING ALL PROFESSIONAL AS INSTRUMENTS OF SERVICE SHALL REMAIN THE PROPERTY OF THE DESIGN PROFESSIONAL. DISSEMINATION MAY NOT BE MADE WITHOUT PRIOR CONSENT OF THE DESIGN PROFESSIONAL. ALL COMMON LAW RIGHTS OF COPYRIGHT AND OTHERWISE ARE HEREBY SPECIFICALLY RESERVED.



NOT FOR CONSTRUCTION

**BUILDING SECTIONS AND DETAILS**



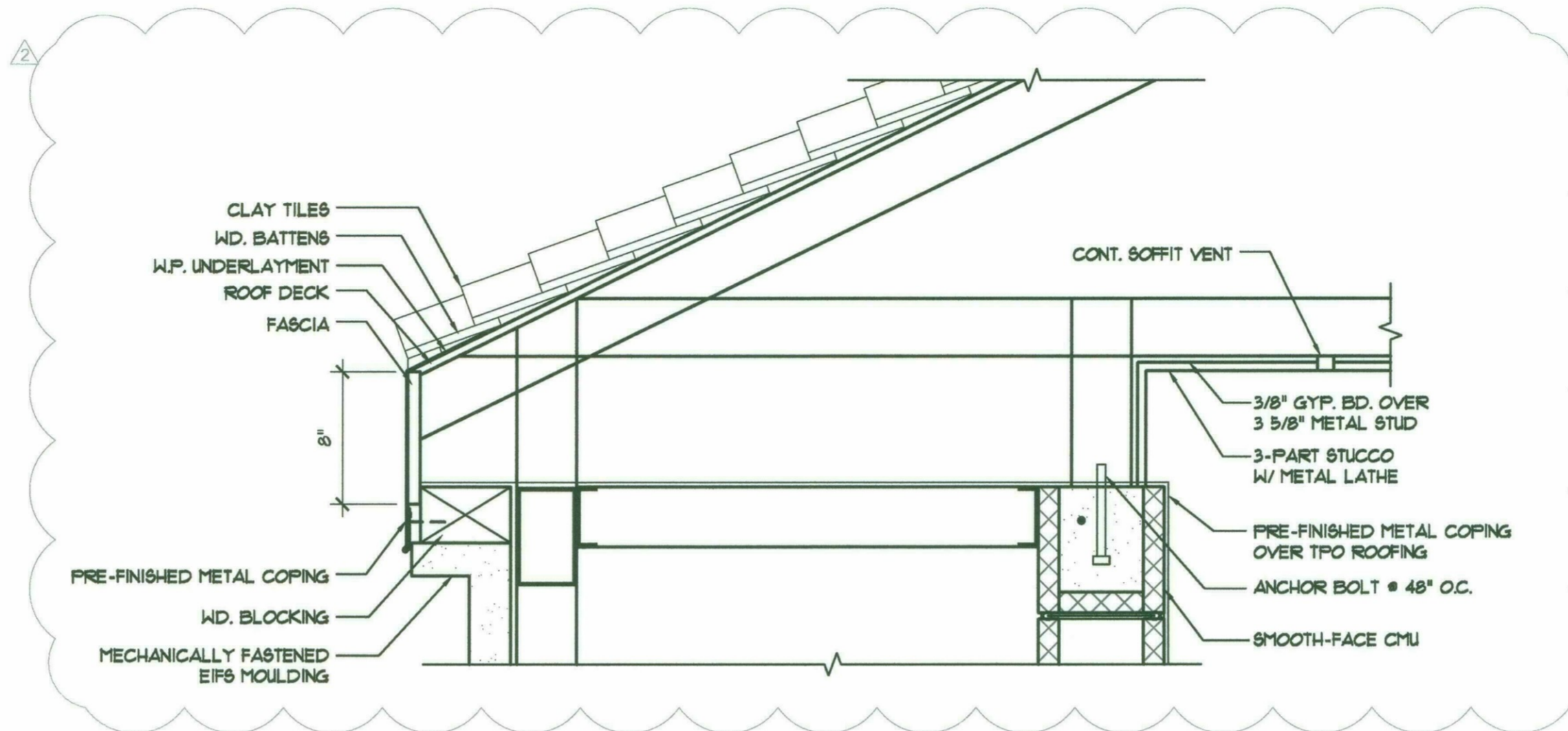
331-17  
**APPROVED**  
FINAL PLANS PLANNING  
6/2/17  
DATE APPROVED BY

5 WALL SECTION  
SCALE: 3/4" = 1'-0"

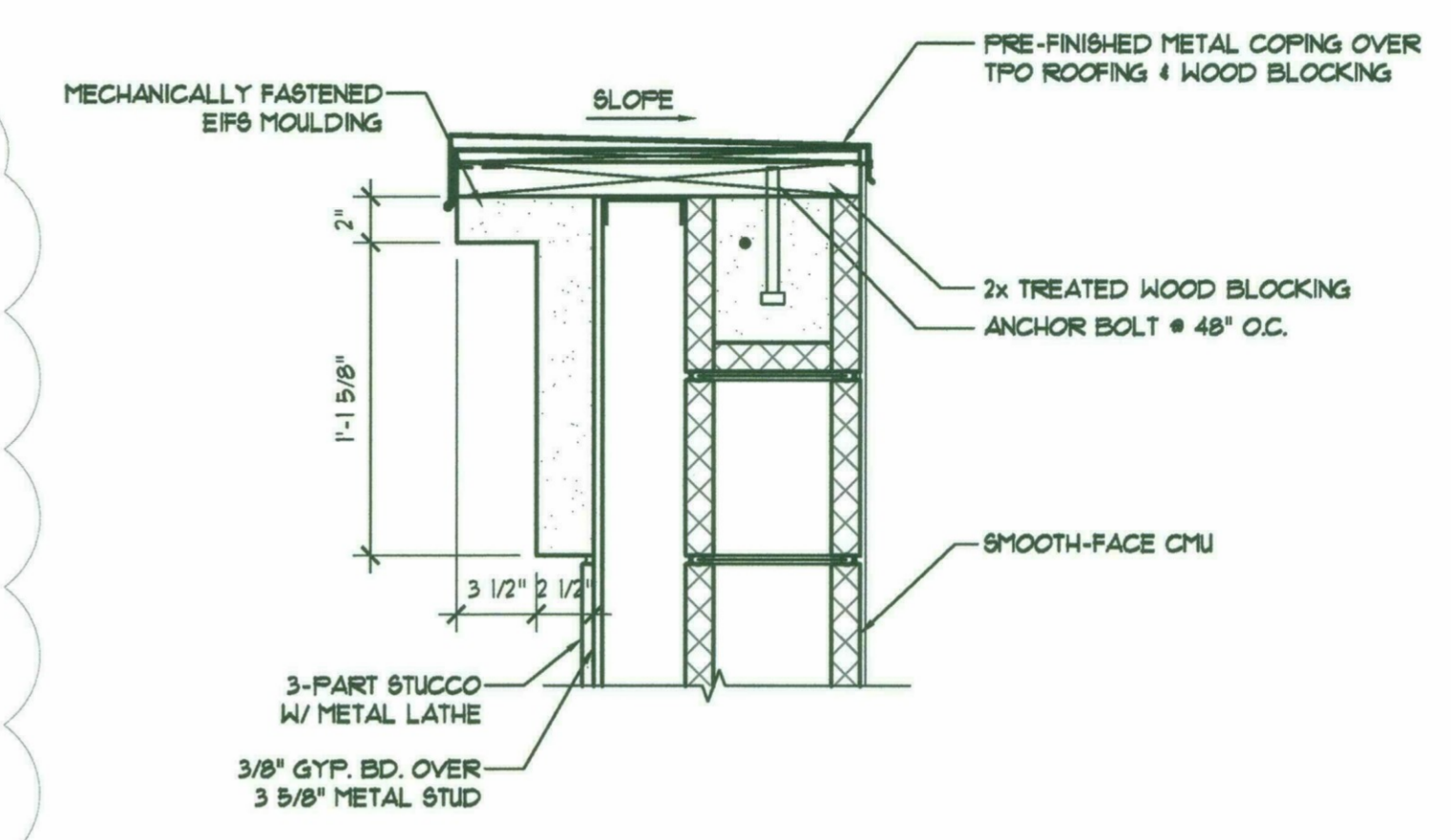
6 WALL SECTION  
SCALE: 3/4" = 1'-0"

7 WALL SECTION  
SCALE: 3/4" = 1'-0"

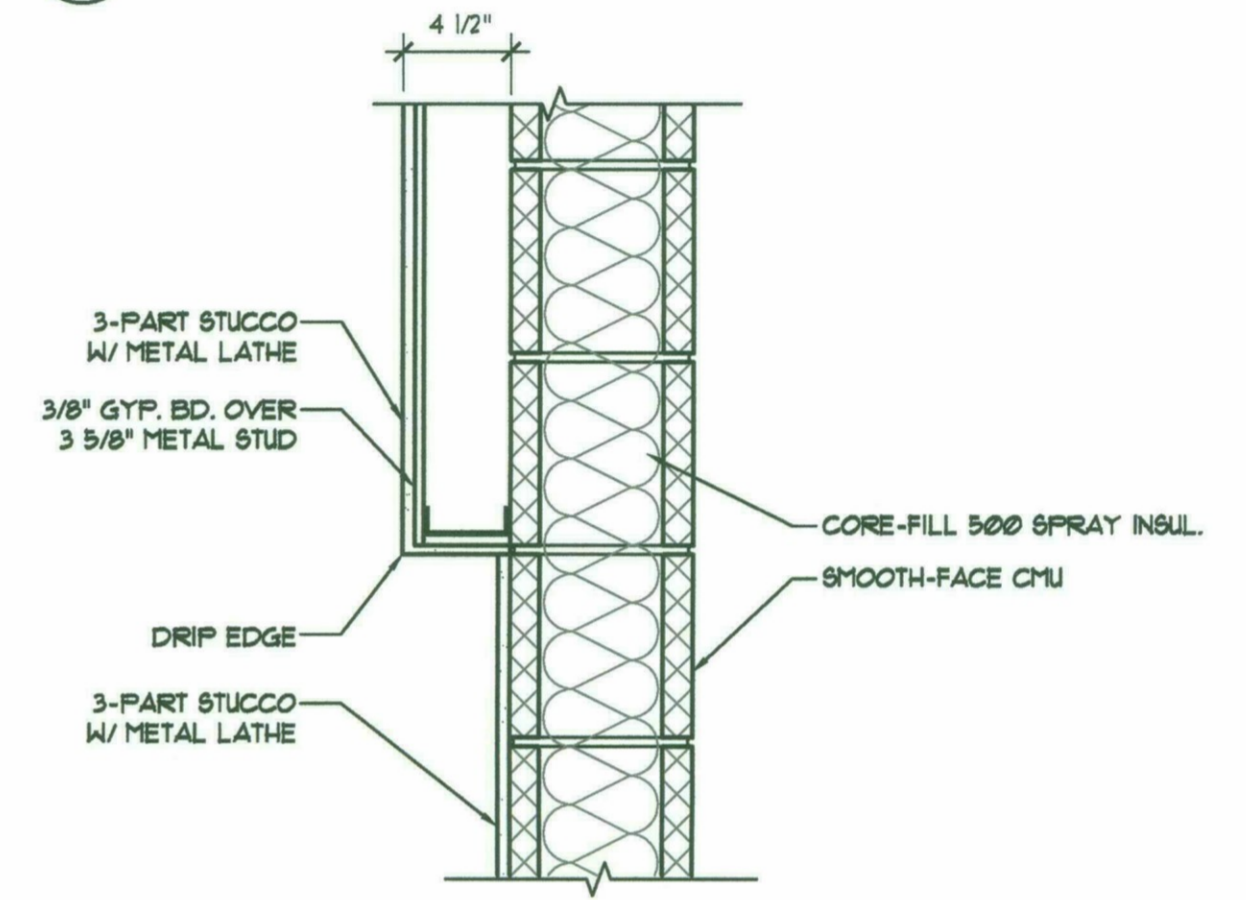
8 WALL SECTION  
SCALE: 3/4" = 1'-0"



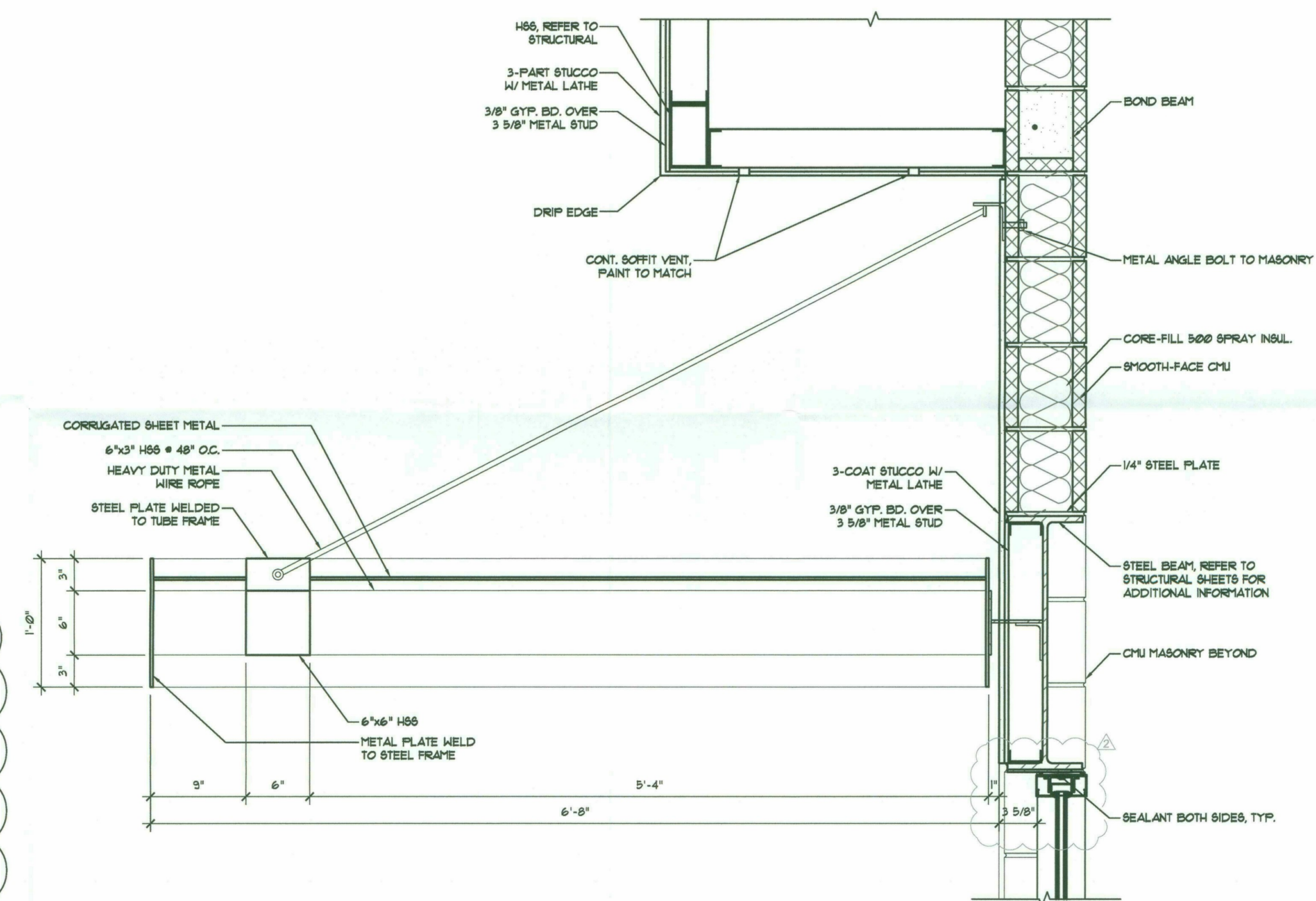
1 PARAPET DETAIL AT PITCHED ROOF  
AS SCALE: 1/2" = 1'-0"



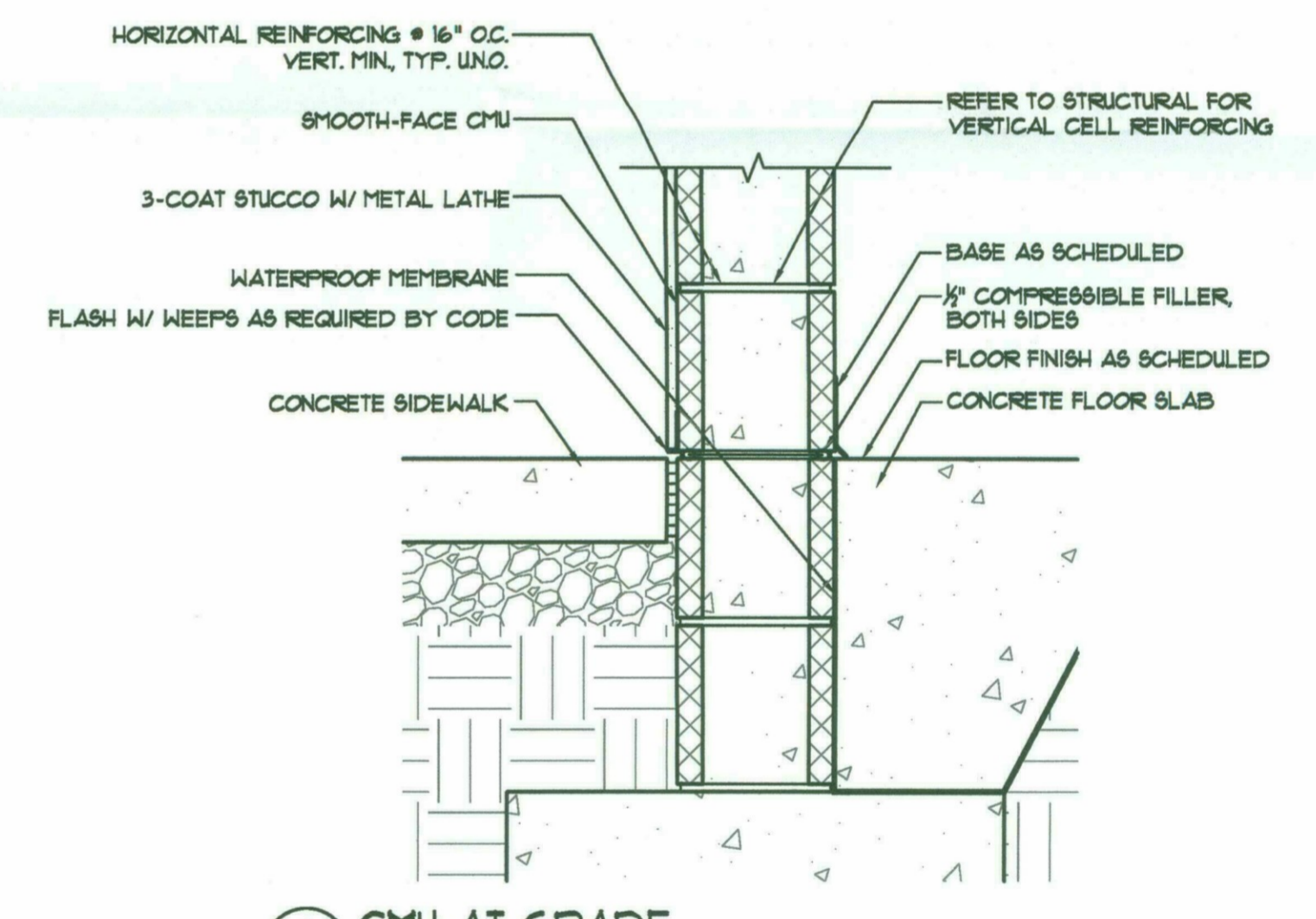
4 PARAPET DETAIL  
AS SCALE: 1/2" = 1'-0"



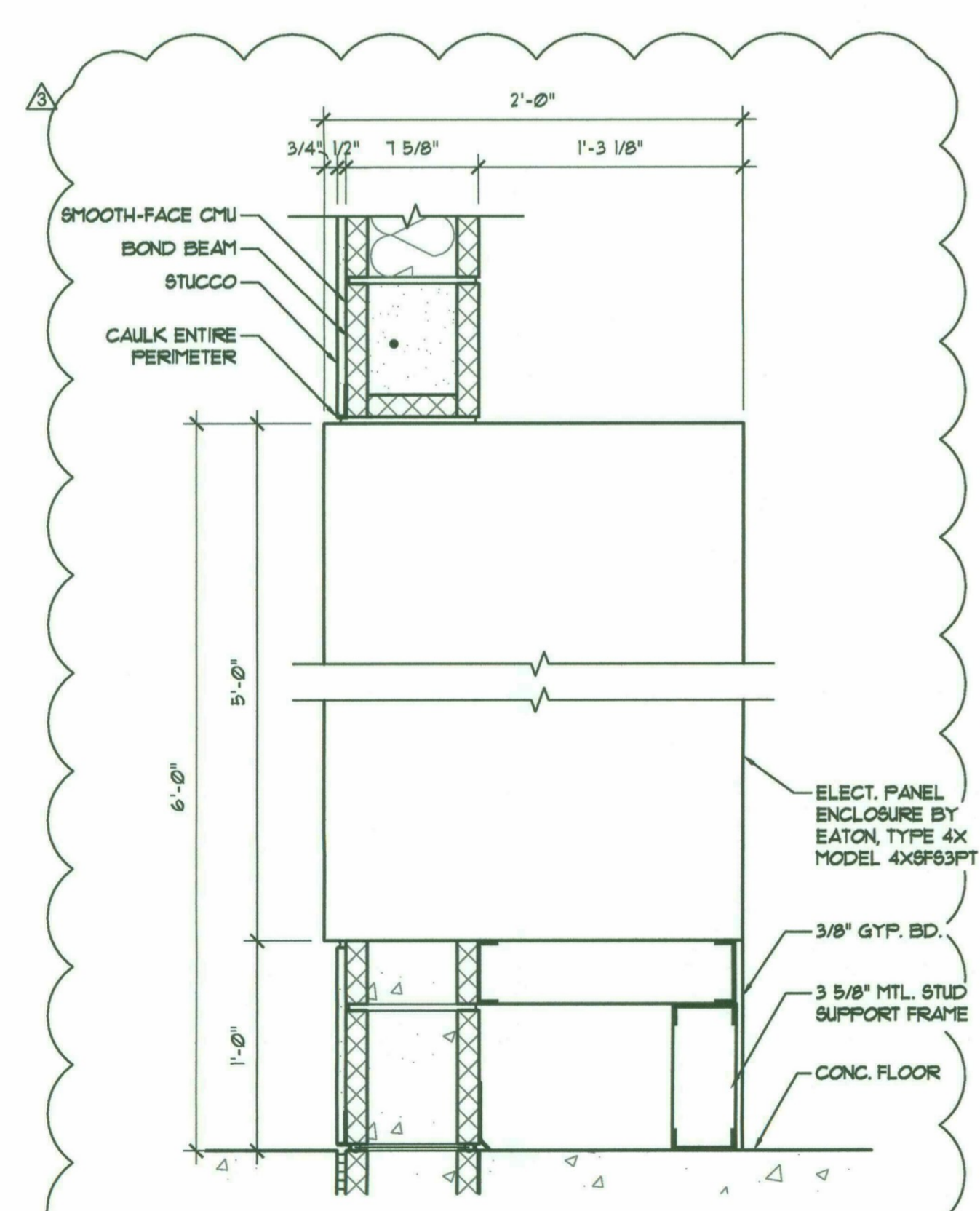
3 SOFFIT DETAIL  
AS SCALE: 1/2" = 1'-0"



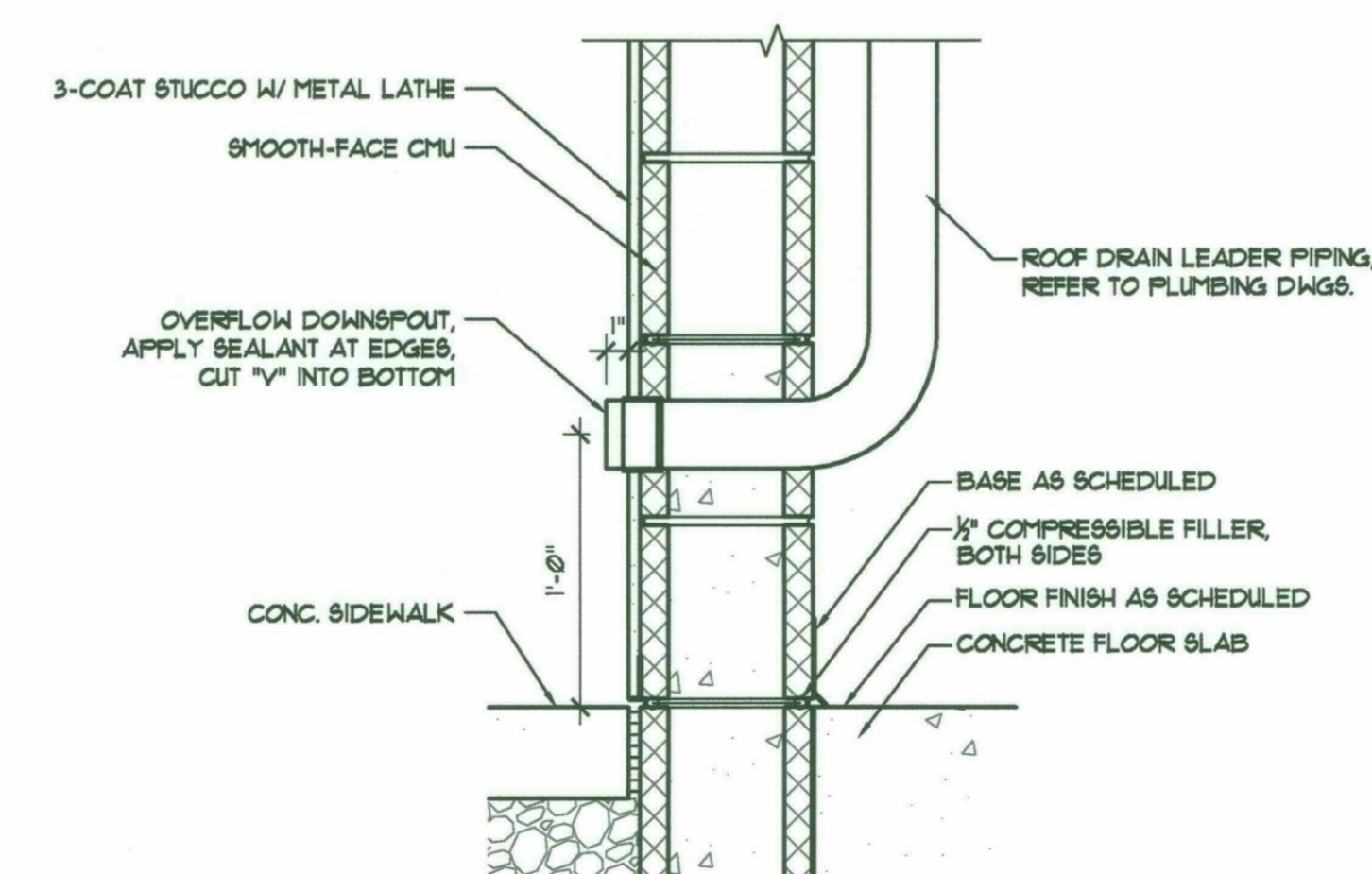
6 OVERFLOW/ROOF DRAIN DAYLIGHT  
AS SCALE: 1/2" = 1'-0"



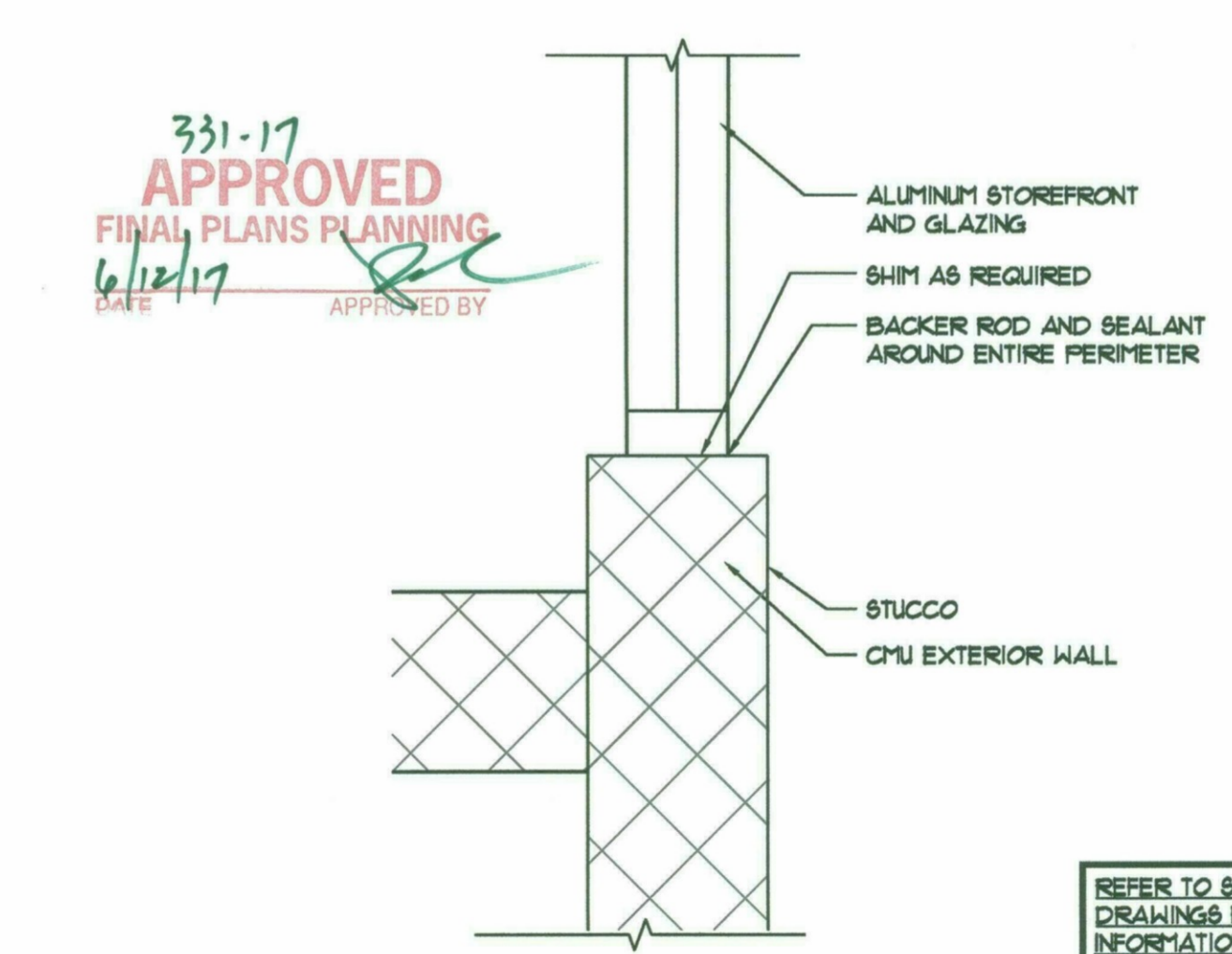
2 CMU AT GRADE  
AS SCALE: 1/2" = 1'-0"



8 ELECTRICAL PANEL ENCLOSURE DETAIL  
AS SCALE: 1/2" = 1'-0"



5 OVERFLOW/ROOF DRAIN DAYLIGHT  
AS SCALE: 1/2" = 1'-0"



1 STOREFRONT JAMB DETAIL  
AS SCALE: 1/2" = 1'-0"

331-17  
APPROVED  
FINAL PLANS PLANNING  
6/12/17  
DATE APPROVED BY

REFER TO STRUCTURAL DRAWINGS FOR ADDITIONAL INFORMATION

**CaCo architecture**

ARCHITECT:  
CaCo ARCHITECTURE, LLC  
521 N. RIVERFRONT BLVD, SUITE 500  
DALLAS, TX 75207 (972) 694-7800

MEP ENGINEER:  
PRE-SERVICES  
6300 N. CENTRAL EXP, SUITE M-21788  
DALLAS, TX 75206 (972) 291-2114

STRUCTURAL ENGINEER:  
STENSTROM-SCHNEIDER, INC.  
15441 KOLL TRAIL, SUITE 122  
DALLAS, TX 75248 (214) 461-6651

**Advance Auto Parts**

15515 N. HAYDEN ROAD  
SCOTTSDALE, ARIZONA 85260

STORE # 107919

REV	DATE	DESCRIPTION
1	01/20/17	ADDRESS UPDATE
2	03/29/17	CITY COMMENTS
3	05/10/17	CITY COMMENTS

DATE	GROSS SQ. FT.
12-06-16	7,022 S.F.

PROJECT # P1639.001  
DRAWN BY: SWH  
CHECK BY: EJC

ALL REPORTS, PLANS, SPECIFICATIONS, FIELD DATA, NOTES AND OTHER DOCUMENTS INCLUDING ALL DOCUMENTS ON ELECTRONIC MEDIA, PREPARED BY THE DESIGN PROFESSIONAL AS INSTRUMENTS OF SERVICE SHALL REMAIN THE PROPERTY OF THE DESIGN PROFESSIONAL. DISSEMINATION MAY NOT BE MADE WITHOUT PRIOR CONSENT OF THE DESIGN PROFESSIONAL. ALL COMMON LAW RIGHTS OF COPYRIGHT AND OTHERWISE, ARE HEREBY SPECIFICALLY RESERVED.

REGISTERED ARCHITECT  
CERTIFICATE NO. 29648  
ZOEPLAND  
SCOTTSDALE, ARIZONA U.S.A.  
EXPIRES 12/31/18  
NOT FOR CONSTRUCTION

DETAILS

**A9**

### LIGHTING PLAN KEYED NOTES

- ELECTRICAL CONTRACTOR SHALL FURNISH AND INSTALL ONE (1) 20-AMP CIRCUIT TO JUNCTION BOX FOR BUILDING SIGN. J-BOX SHALL BE LOCATED DIRECTLY BEHIND 1" IN ALUM. CLEARLY MARK J-BOX "FOR SIGN COMPANY". SIGN COMPANY TO MAKE ALL FINAL CONNECTIONS TO SIGNS. SEE ARCHITECTURAL ELEVATIONS FOR EXACT LOCATION OF ALL SIGNS. SIGNS SHALL BE FURNISHED WITH DISCONNECT SWITCH. ELECTRICAL CONTRACTOR SHALL ROUTE CIRCUIT TO PANEL. FINAL CONNECTION TO EMS PREFAB PANEL AND REMOTE OVERRIDE PUSH-BUTTONS BY AAP VENDOR (TELECONTROL).
- ELECTRICAL CONTRACTOR SHALL FURNISH AND INSTALL ONE (1) 20-AMP CIRCUIT IN 1" CONDUIT RUN UNDERGROUND FROM BUILDING TO ROADWAY SIGNAGE. COORDINATE EXACT LOCATION OF ROADWAY SIGNAGE WITH OWNER / ARCHITECT IN FIELD.
- PROVIDE PHOTOCELL TO CONTROL EXTERIOR LIGHTING.
- SQUARE "D", 30A, 4 POLE LIGHTING CONTACTORS IN A NEMA 1 ENCLOSURE LXG40 OR EQUAL. MECHANICALLY HELD WITH CONTROL VOLTAGE TRANSFORMER AS REQUIRED. RATED FOR LED LAMPS. REFER TO LIGHTING CONTRACTOR CONTROL SCHEDULE ON THIS SHEET FOR CIRCUITS ROUTED THROUGH THIS CONTACTOR. SEE SHEET EA FOR LIGHTING CONTROL WIRING DIAGRAM AND MORE INFORMATION.
- OVERRIDE TIMER SWITCH FOR LIGHTING CONTACTOR CONTROL. COORDINATE LOCATION WITH OWNER. REFER TO LIGHTING CONTRACTOR CONTROL SCHEDULE ON THIS SHEET.
- WIRE LUMINAIRES ASSOCIATED WITH DAYLIGHT SENSOR THROUGH LIGHTING CONTRACTOR FOR DAYLIGHTING CONTROLS IN ACCORDANCE WITH IECC 2015 IN ADDITION TO ON/OFF CONTROL WITH OTHER LOCAL LUMINAIRES ON THE SAME CIRCUIT.
- PROSWITCHES FOR LIGHTING CONTACTORS. COORDINATE LOCATION WITH OWNER.

### ELECTRICAL CEILING LEGEND

(ALL SYMBOLS MAY NOT NECESSARILY BE USED ON PROJECT)

SYMBOL	DESCRIPTION
—	4in.X 48in. LINEAR LED LUMINAIRE
□	1X1 SOFFIT LUMINAIRE
⊙	EXIT SIGN WITH BATTERY BACK UP
⚡	INTERIOR EMERGENCY LUMINAIRE
⊙OS	OCCUPANCY SENSOR WITH DUAL TECHNOLOGY (ULTRASONIC AND INFRARED) AND OFF SWITCH. WALL MOUNT AT 48" AFF. RESTROOMS: HUBBELL #AT1277W1
⊙	LIGHTING LUMINAIRE SYMBOL TYPE. REFER TO LUMINAIRE SCHEDULE
A-XX	INDICATES PANEL DESCRIPTION & CIRCUIT NUMBERS
⊙X	120 VOLT DAYLIGHT SENSOR COMPATIBLE WITH LIGHTING CONTROL PANEL AND CAPABLE OF BEING CALIBRATED BY AUTHORIZED PERSONNEL. LOWER CASE LETTER INDICATES LIGHTS CONTROLLED.

### LUMINAIRE SCHEDULE

(ALL LUMINAIRES MAY NOT NECESSARILY BE USED ON PROJECT)

TYPE	QTY.	MANUFACTURER	MODEL NUMBER	LAMPS PER FIXTURE				COLOR	MOUNTING	REMARKS
				NO.	OSRAM/SYLAVANIA TYPE	WATTS	VOLTAGE			
A	75	US LED	ST1-1JUNV-4H-35-TWS1	1	LED	32	120	WHITE	14'-0" A.F.F.	NOTES 1,2,3,10
EL	4	LITHONIA	ELM654	2	(2) 9 WATT KRYPTON INCLUDED	18	6V	WHITE	BOTTOM OF JOIST	CONNECT DC WIRING TO EU FIXTURE, NOTE 6
EU	3	LITHONIA	ELA-T-H0806	2	(2) 8 WATT HALOGEN INCLUDED	16	6V	WHITE	BOTTOM OF JOIST	CONNECT REMOTE FIXTURES TO EL FIXTURE, NOTE 6
R	2	US LED	GTR2-11EH-35-0-PUB-UNV2-700	1	LED	28	120	WHITE	8'-0" A.F.F. @ RESTROOM	NOTES 1,2,3
XL	3	LITHONIA	LHQM-S-W-3-R-HO	-	LED - INCLUDED	3	120	WHITE W/ RED LETTERS	REFER TO ARCH. ELEV. FOR MNT'G HTS	NOTES 1,2,7
XU	2	EVENLITE	WLEM WH	-	15 W LAMPS INCLUDED	15	120	WHITE	REFER TO ARCH. ELEV. FOR MNT'G HTS	CONNECT TO EXIT SIGN 120 V. CKT W/ INTEGRAL PHOTOCELL
WP	4	LITHONIA	DSXW2-LED-10C-30C-1000-35K-TFTM-MVOLT-DBTDX	1	109 W LAMPS INCLUDED	109	120	WHITE	REFER TO ARCH. ELEV. FOR MNT'G HTS	NOTES 1,5 FIXTURE NOT TO BE PAINTED
SC	2	LITHONIA	LDN6-3505-LO6AR-LS	1	7.57 W LAMPS INCLUDED	7.57	120	WHITE	CLEAR SPECULAR REFLECTOR	
SC(E)	1	LITHONIA	LDN6-3505-LO6AR-LS-EL	1	7.57 W LAMPS INCLUDED	7.57	120	WHITE	CLEAR SPECULAR REFLECTOR W/ BATTERY BACK-UP	

#### LIGHT FIXTURE SCHEDULE NOTES:

- ELEC. SHALL FURNISH AND INSTALL ALL LUMINAIRES AND LAMPS AS SPECIFIED. LUMINAIRES AND LAMPS SHALL BE ORDERED THROUGH ADVANCE AUTO PARTS NATIONAL ACCOUNT. REFER TO RESPONSIBILITY MATRIX SHEET T1 FOR ORDERING INFORMATION.
- ELEC. SHALL BE RESPONSIBLE TO SUPPORT LIGHT FIXTURES WITH UNISTRUT THAT IS INSTALLED TO ALLOW FOR ADJUSTMENT OF LIGHT FIXTURES AFTER FIXTURES ARE INSTALLED. LIGHT FIXTURES SHALL BE INSTALLED AS DIRECTED.
- REFER TO ARCHITECTURAL REFLECTED CEILING PLAN FOR EXACT LOCATION OF ALL LUMINAIRES.
- IN "STAGING" DIRECT MOUNT FIXTURE BELOW STRUCTURE, KEEP AS HIGH AS POSSIBLE.
- J-BOXES SHALL BE MOUNTED ON INTERIOR OF CMU ABOVE CEILING, CONDUIT SHALL BE CONCEALED IN CMU TO FIXTURE ON EXTERIOR.
- MAXIMUM OF TWO (2) TYPE "EU" (4 INDIVIDUAL REMOTE HEADS) MAY BE CONNECTED TO A SINGLE TYPE "XL" UNIT.
- MAXIMUM OF TWO (2) TYPE "XU" (4 INDIVIDUAL REMOTE HEADS) MAY BE CONNECTED TO A SINGLE TYPE "XL" UNIT.
- FOR USE WHEN RESTROOM EMERGENCY LIGHTS ARE REQUIRED BY LOCAL CODE.
- NOT USED.
- PROVIDE 5' WHIPS ON FIXTURES "A" AND "B" LIGHT FIXTURES TO ALLOW ELECTRICIAN TO ADJUST FINAL LOCATION AFTER STORE FIXTURES ARE SET. (SEE LIGHT FIXTURE SCHEDULE NOTE 2 ABOVE)

NOTE  
 SEE ARCHITECTURAL REFLECTED CEILING PLAN FOR LIGHTING LOCATION DIMENSIONS

#### LIGHTING GENERAL NOTES:

- PROVIDE NEW SWITCHES AND SWITCH COVERS. COLOR SHALL BE WHITE.
- EMERGENCY BATTERY UNITS AND EXIT SIGNS SHALL BE CONNECTED TO THE NORMAL LIGHTING CIRCUIT AHEAD OF ANY SWITCH.
- ELECTRICAL CONTRACTOR SHALL PLACE OIL/BATTERY LIGHTING AFTER RACK IS SET.
- ELECTRICAL CONTRACTOR SHALL ADD 5'-0" WHIPS ON ALL MERCHANDISE AREA LIGHT FIXTURES.
- LIGHTING SHALL BE MOUNTED AT MIN. 14'-0" AFF.
- ELECTRICAL CONTRACTOR SHALL PROVIDE AND INSTALL CONDUITS & CIRCUITING OF LIGHTING BACK TO PANELS.
- LIGHTING SHALL BE INSTALLED DOWN CENTER OF AISLES.
- PROVIDE PHOTOCELL CONTROL THROUGH LIGHTING CONTRACTOR FOR ALL EXTERIOR LIGHTING AND SIGNAGE. COORDINATE ALL SETTINGS WITH OWNER.

ELECTRICAL CONTRACTOR SHALL COORDINATE THE EXACT EXIT SIGN LOCATION/PLACEMENT WITH THE CITY OF SCOTTSDALE'S FIELD BUILDING INSPECTOR PRIOR TO ROUGH INSPECTION APPROVAL.

331-17  
**APPROVED**  
 FINAL PLANS PLANNING  
 DATE 6/12/17 APPROVED BY

#### CONTRACTOR NOTE

IT IS THE RESPONSIBILITY OF THE CONTRACTOR TO NOTIFY THE ARCHITECT, LANDLORD AND TENANT OF ANY DISCREPANCIES ENCOUNTERED ON THE PLANS OR IN EXISTING SITE CONDITIONS PRIOR TO SUBMISSION OF BID.

BIDDERS ARE TO VISIT THE SITE AND FAMILIARIZE THEMSELVES WITH EXISTING CONDITIONS AND SATISFY THEMSELVES AS TO THE NATURE AND SCOPE OF THE WORK. THE BASE BID SHALL REFLECT MODIFICATIONS TO SYSTEMS AND DEVICES AS REQUIRED BY STATE, LOCAL AND FEDERAL CODES WHETHER INDICATED OR NOT ON CONTRACT DOCUMENTS. THE SUBMISSIONS OF A BID WILL BE EVIDENCE THAT SUCH AN EXAMINATION AND COMPLIANCE WITH GOVERNING CODES/REQUIREMENTS HAS BEEN MADE. LATER CLAIMS FOR LABOR, EQUIPMENT, OR MATERIALS REQUIRED, OR FOR DIFFICULTIES ENCOUNTERED WHICH COULD HAVE BEEN FORESEEN HAD AN EXAMINATION AND CODE/REQUIREMENTS REVIEW BEEN MADE, WILL NOT BE ALLOWED.

REV	DATE	DESCRIPTION
1	01/20/17	ADDRESS UPDATE
2	03/28/17	CITY COMMENTS

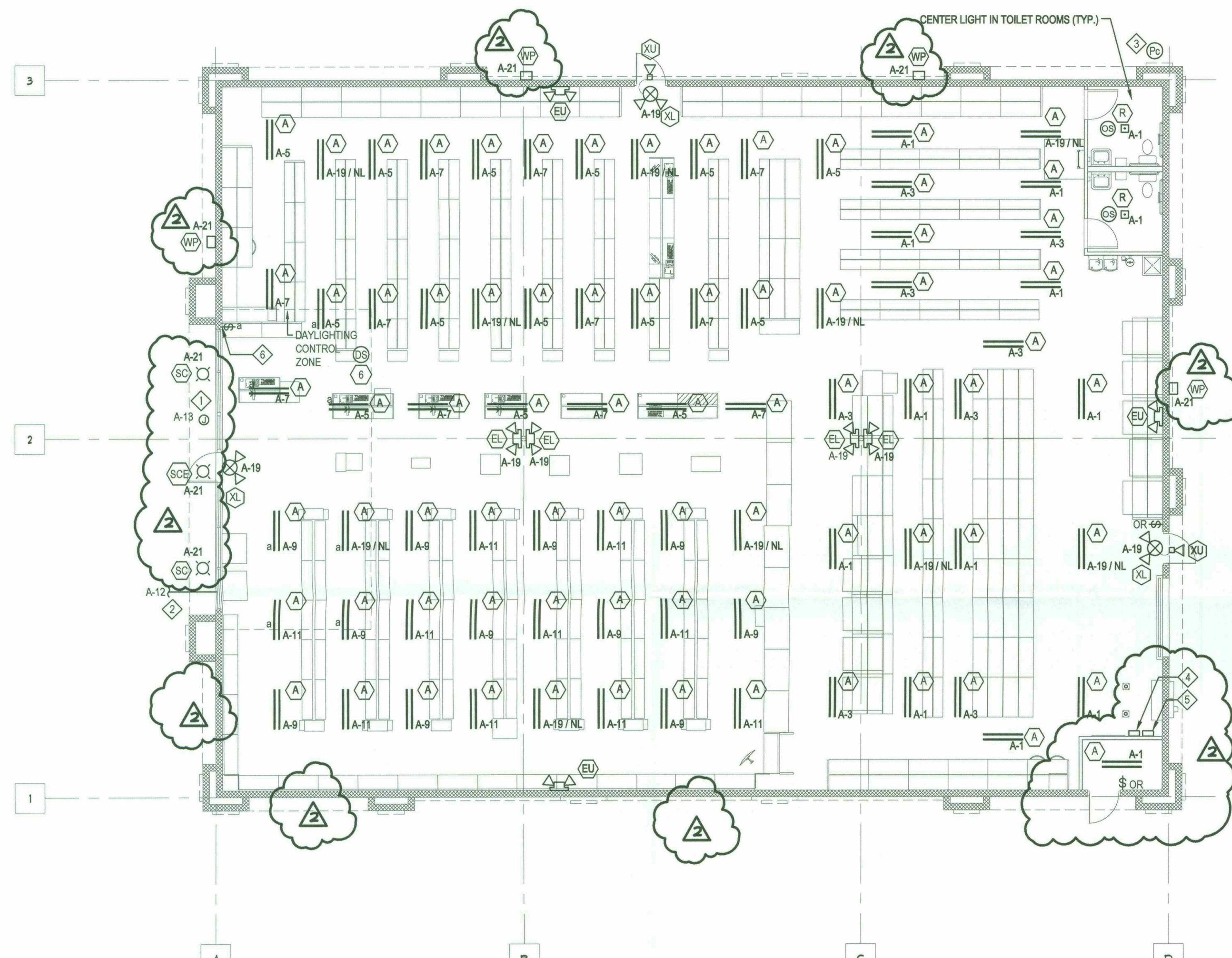
DATE: 12-06-16  
 PROJECT # 1639.001  
 DRAWN BY: STAFF  
 CHECKED BY: RRR

ALL REPORTS, PLANS, SPECIFICATIONS, FIELD DATA, NOTES AND OTHER DOCUMENTS INCLUDING ALL DOCUMENTS ON ELECTRONIC MEDIA, PREPARED BY THE DESIGN PROFESSIONAL AS INSTRUMENTS OF SERVICE SHALL REMAIN THE PROPERTY OF THE DESIGN PROFESSIONAL. DISSEMINATION MAY NOT BE MADE WITHOUT PRIOR CONSENT OF THE DESIGN PROFESSIONAL. ALL COMMON LAW RIGHTS OF COPYRIGHT AND OTHERWISE ARE HEREBY SPECIFICALLY RESERVED.

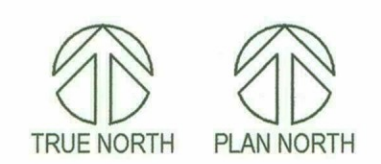
REGISTERED PROFESSIONAL ENGINEER  
 CERTIFICATE # 1000000000  
 JOHN BOGOLPH  
 ARIZONA U.S.A.

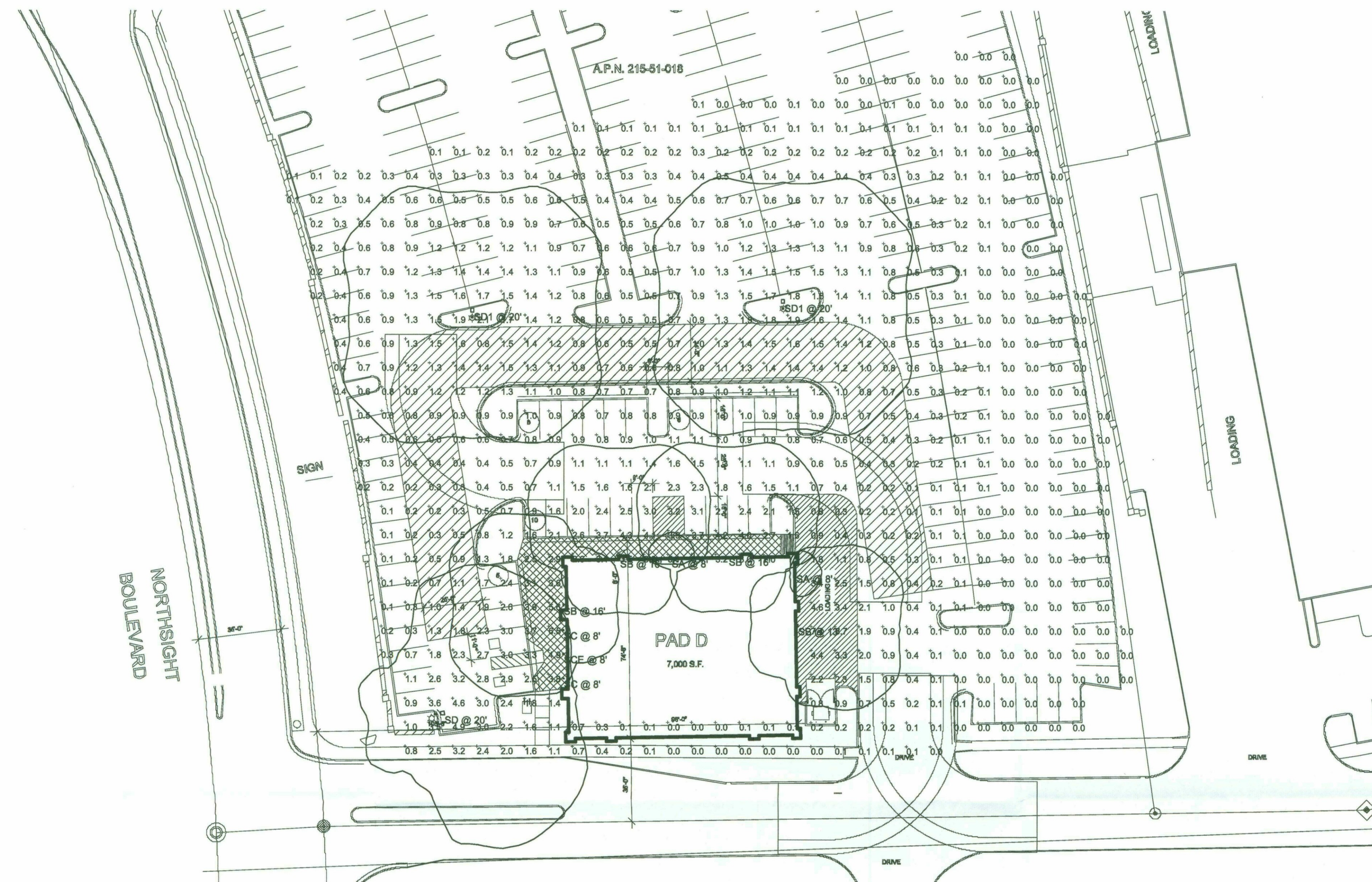
LIGHTING PLAN,  
 SCHEDULE &  
 NOTES

**E3**



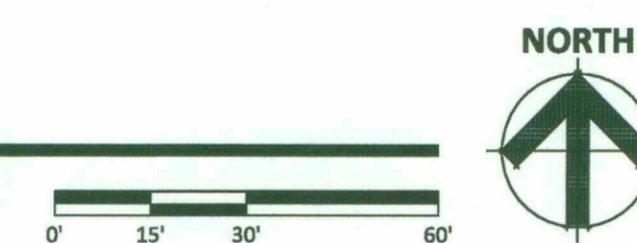
1 ELECTRICAL LIGHTING PLAN  
 E3 SCALE: 1/8"=1'-0"





**ENLARGED PHOTOMETRIC SITE PLAN**

SCALE: 1" = 30'-0"



Lamp	Symbol	Label	Quantity	Manufacturer	Catalog Number	Description	Lamp	Filename	Lumens Per Lamp	Light Loss Factor	Wattage
		SA	2	EVENLITE	WLEM WH	WALL MOUNT SECURITY AND EXIT LIGHT AT 8 FT AFG	LED	Weatherlite AC Mode IES T26206.ies	385	1	15
		SB	4	Lithonia Lighting	DSXW2 LED 30C 1000 35K TFTM MVOLT	WALL MOUNTED AT 16 FT AFG	LED	DSXW2_LED_30C_1000_40K_TFTM_MVOLT.ies	8603.901	0.9	109
		SC	2	Lithonia Lighting	LDN6 35/10 LO6AR MVOLT EZ10	DOWNLIGHT	LED	LDN6_35_10_LO6AR_120.ies	1088.769	0.9	17.97
		SCE	1	Lithonia Lighting	LDN6 35/10 LO6AR MVOLT EZ10 EL	DOWNLIGHT WITH INTEGRAL EMERGENCY LIGHTING SYSTEM	LED	LDN6_35_10_LO6AR_120.ies	1088.769	0.9	17.97
		SD	1	Lithonia Lighting	DSX0 LED 40C 1000 40K T4M MVOLT (FINISH) / SSS 17.5" W/2.5" BASE	DSX0 LED with 40 LEDs @1000 mA , 4000K, Type 4 Medium Optics	LED	DSX0_LED_40C_1000_40K_T4M_MVOLT.ies	15213	0.9	138
		SD1	2	Lithonia Lighting	DSX0 LED 40C 1000 40K T5W MVOLT (FINISH) / SSS 17.5" W/2.5" BASE	DSX0 LED with 40 LEDs @1000 mA , 4000K, Type 5 Wide Optics	LED	DSX0_LED_40C_1000_40K_T5W_MVOLT.ies	15741	0.9	138

THIS SITE PLAN HAS BEEN PREPARED WITHOUT THE AID OF A SURVEY. ALL PROPERTY BOUNDARIES ARE ROUGH APPROXIMATIONS. THIS DRAWING IS TO BE USED FOR CONCEPTUAL PURPOSES ONLY AND IT IS NOT TO BE THE BASIS FOR ANY LEGALLY BINDING DOCUMENTATION.

**SONORA VILLAGE - PAD D**  
 FRANK LLOYD WRIGHT BOULEVARD AND PIMA ROAD  
 SCOTTSDALE, ARIZONA  
 DATE: 05-22-2017 (PRELIMINARY)

331-17  
**APPROVED**  
 FINAL PLANS PLANNING  
 6/12/17  
 DATE APPROVED BY

© 2016 R K A A ARCHITECTS, INC. ALL RIGHTS RESERVED. THIS DRAWING IS AN INSTRUMENT OF SERVICE. IT IS THE PROPERTY OF R K A A ARCHITECTS, INC. AND MAY NOT BE DUPLICATED, USED OR DISCLOSED WITHOUT WRITTEN PERMISSION OF THE ARCHITECT.

PM-1

#14214.50

**RKAA**  
 ARCHITECTS, INC

# Weatherlite

Architectural Emergency Light  
Interior or Exterior Design

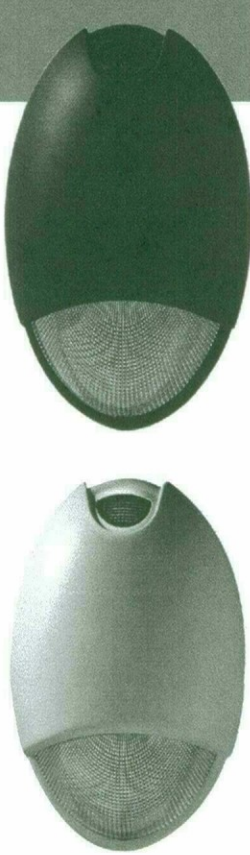
The Weatherlite emergency light provides an attractive solution to applications that require low profile egress emergency lighting with rugged durability and good looks. Constructed of Die-Cast Aluminum with a polycarbonate refractor and finished in epoxy powder coat, the Weatherlite is gasket sealed ready for use in both outdoor and indoor applications. LED's provide low energy consumption, bright uniform illumination, and long (50,000+ hours) lamp life.

### Included Self Diagnostic

- |   |   |
|---|---|
| <ul style="list-style-type: none"> <li>● Ready</li> <li>● In Test</li> <li>● Battery Circuit Fault</li> <li>● Battery Capacity Failure</li> <li>● Charger Failure</li> <li>● Transformer Fault</li> <li>● Lamp Failure</li> </ul> | <p><b>Manual Testing</b><br/>Press button once - 1 minute test<br/>Press button twice - 5 minute test<br/>Press button 3 times - 30 minute test<br/>Press button 4 times - 90 minute test</p> |
|---|---|

Full self-test, self-diagnostic system is standard in every unit, performs a monthly, test as well as continuously monitoring all functions to ensure reliability, a manual test may be initiated at any time

# Wet Location LED



## D-Series Size 2 LED Wall Luminaire

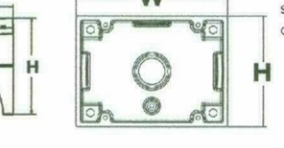
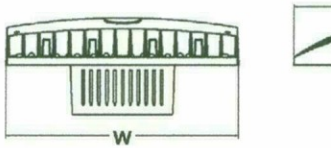


d-series

### Specifications Luminaire

**Width:** 18-1/2" (47.0 cm)  
**Depth:** 10" (25.4 cm)  
**Height:** 7-5/8" (19.4 cm)

**Back Box (BBW)**  
**Width:** 5-1/2" (14.0 cm)  
**Depth:** 1-1/2" (3.8 cm)  
**Height:** 4" (10.2 cm)



Catalog Number

Notes

Type

For the Tab key or mouse over the page to view all interactive elements.

### Introduction

The D-Series Wall Luminaire is a stylish, fully integrated LED solution for building-mount applications. It features a sleek, modern design and is carefully engineered to provide long-lasting, energy-efficient lighting with a variety of optical and control options for customized performance. With an expected service life of over 20 years of nighttime use and up to 76% in energy savings over comparable 400W metal halide luminaires, the D-Series Wall is a reliable, low-maintenance lighting solution that produces sites that are exceptionally illuminated.

### Ordering Information

EXAMPLE: DSWX2 LED 30C 700 40K T3M MVOLT DBDXTX

Series	LEDs	Drive Current	Color temperature	Distribution	Voltage	Mounting	Control Options	Other Options	Finish
DSWX2 LED	20C 29 LEDs (120, 277)	350 350 mA	30K 3000 K	T25 Type I Start	120V 120V	MVOLT 1	Shipped included (blank) Surface mounting bracket	Shipped installed PE Photoelectric (ctrl. button type)*	DOBRO Dark bronze
	30C 30 LEDs (120, 277)	500 500 mA	40K 4000 K	T2M Type II Start	208V 208V	240V 240V	PER NSM1 two-lock recessed lock (no controls)	DBLDO Black	
		1000 1000 mA (A)	AMBC Amber phosphor converted	T35 Type III Start	277V 277V	480V 480V	DMS 0-10V dimming driver (no controls)	DWHD White	
				T3M Type III Start	347V 347V		DCR Dimmable and control table via RS485 (no controls)*	DSDD Sandstone	
				T4M Type IV Medium forward			PRH 180° motor/ambient light sensor, 15-30° tilt	DBLDO Textured black	
				T5M Type V Medium forward			WIG Wire guard	DBLDO Textured black	
				T6M Type VI Medium forward			VG Vandal guard	DBLDO Textured black	

### NOTES

- MVOLT driver operates on any line voltage from 120-277V (50/60 Hz). Specify 120, 208, 240 or 277 options only when ordering with fusing (DF) options or photocontrol (PE) options.
- Available with 30 LED/700mA options only (DSWX2 LED 30C 700). DMG option not available.
- Also available as a separate accessory see Accessories Information.
- Photocontrol (PE) requires 120, 208, 240 or 277 voltage option. Not available with motion/ambient light sensors (PIR or PIRL).
- Specifies a RCAMMB enabled luminaire with 0-10V dimming capability. PER option required. Not available with 347V, 480V or PIRL. Additional hardware and services required for RCAMMB deployment, must be purchased separately. Call 1-800-842-4262 or email sales@evenlite.com.
- Specifies the Sensor Switch S5028+CCP control, see Motion Sensor Guide for details. Includes ambient light sensor. Not available with "PIR" option (Button type photocontrol) or DCCL. Dimming driver standard.
- Single fuse (DF) requires 120, 277 or 347 voltage option. Double fuse (DF) requires 208, 240 or 480-voltage option.
- See the electrical section on page 7 for more details.
- Requires luminaire to be specified with PER option. Ordered and shipped as a separate line item.

### Accessories

Ordered and shipped separately

- |                   |                                  |
|-------------------|----------------------------------|
| DL1129 1.5 ft     | Photo: 30 inch bar (120-277V)    |
| DL1249 1.5 ft (B) | Photo: 30 inch bar (347V)        |
| DL1487 1.5 ft (B) | Photo: 30 inch bar (480V)        |
| DL1487 1.5 ft (B) | Photo: 30 inch bar (480V)        |
| SC1               | Starting cap                     |
| DSM500            | House side (one per light input) |
| DSM500B           | Mid-mounting                     |
| DSM500C           | Wire guard/accessory             |
| DSM500D           | Vandal guard/accessory           |
| DSM500E           | Back accessory                   |
| DSM500F           | Special finish                   |

### Performance Data

#### Lumen Output

Lumen values are from photometric tests performed in accordance with IESNA LM-79-08. Data is considered to be representative of the configurations shown, within the tolerances allowed by Lighting Facts. Contact factory for performance data on any configurations not shown here.

CR	Date	System	Watt	Type	IK10 (2000 ft. CD)				IK15 (2000 ft. CD)				IK18 (2000 ft. CD)			
					Lumens	lm/ft²	lm/ft	lm/ft²	Lumens	lm/ft²	lm/ft	lm/ft²	Lumens	lm/ft²	lm/ft	lm/ft²
30C	5/30	36W	T25	1649	1.0	1.1	101	1875	1.0	1.1	108	1429	1.0	1.1	95	
			T35	1678	1.0	1.1	97	1681	1.0	1.1	103	1302	1.0	1.1	91	
			T4M	1689	1.0	1.1	100	1833	1.0	1.1	106	1300	1.0	1.1	94	
			T5M	1722	1.0	1.1	99	1794	1.0	1.1	105	1326	1.0	1.1	95	
			T6M	1690	1.0	1.2	97	1717	1.0	1.2	103	1285	1.0	1.2	91	
			T7M	1618	1.0	1.1	101	1864	1.0	1.1	107	1418	1.0	1.1	95	
			K50SF	1752	1.0	1.2	99	1859	1.0	1.2	96	1356	1.0	1.2	85	
			T25	4292	1.0	1.1	96	4776	1.0	1.1	103	4794	1.0	1.1	103	
			T35	4296	1.0	1.1	93	4753	1.0	1.1	97	4509	1.0	1.1	97	
			T4M	4452	1.0	1.2	90	4753	1.0	1.2	100	4741	1.0	1.2	101	
			T5M	4407	1.0	1.2	94	4675	1.0	1.2	99	4687	1.0	1.2	100	
			T6M	4118	1.0	1.2	95	4581	1.0	1.2	97	4398	1.0	1.2	98	
T7M	4488	1.0	1.2	85	4761	1.0	1.2	91	4779	1.0	1.2	103				
30C	700	47W	K50SF	4612	1.0	1.2	85	4727	1.0	1.2	91	4733	1.0	1.2	91	
			T25	5263	2.0	2.1	81	6127	1.0	2.1	84	6151	1.0	2.1	85	
			T35	5493	2.0	2.1	77	6079	1.0	2.1	80	6052	1.0	2.1	81	
			T4M	5496	1.0	1.2	80	6256	1.0	1.2	83	6286	1.0	1.2	84	
			T5M	5837	2.0	2.1	79	6193	1.0	2.1	83	6236	1.0	2.1	83	
			T6M	5779	1.0	1.2	77	6067	1.0	1.2	81	6089	1.0	1.2	81	
			T7M	5944	1.0	1.2	80	6387	1.0	1.2	84	6330	1.0	1.2	84	
			K50SF	5114	1.0	1.2	77	5638	2.0	1.2	75	5660	2.0	1.2	75	
			T25	4533	1.0	1.2	80	5480	1.0	1.2	86	4786	1.0	1.2	87	
			T35	4726	1.0	1.2	78	5137	1.0	1.2	85	5613	1.0	1.2	104	
			T4M	4799	1.0	1.2	79	5214	1.0	1.2	87	5496	1.0	1.2	105	
			T5M	4349	1.0	1.2	81	5788	1.0	1.2	88	5789	1.0	1.2	107	
T6M	4291	1.0	1.2	79	5223	1.0	1.2	87	5727	1.0	1.2	106				
T7M	5196	1.0	1.2	75	6511	1.0	1.2	82	7118	1.0	1.2	100				
30C	100W	71W	T25	7152	1.0	1.2	65	8487	2.0	1.2	80	9301	1.0	1.2	85	
			T35	7279	1.0	1.2	74	8451	1.0	1.2	81	9268	1.0	1.2	99	
			T4M	7586	1.0	1.2	75	8588	1.0	1.2	87	9311	1.0	1.2	98	
			T5M	5293	1.0	1.2	75	6449	1.0	1.2	81	7247	1.0	1.2	99	
			T6M	5289	1.0	1.2	74	6444	1.0	1.2	81	7242	1.0	1.2	99	
			T7M	7137	1.0	1.2	65	8487	2.0	1.2	80	9301	1.0	1.2	85	
			T8M	6944	2.0	2.1	64	8482	2.0	2.1	78	9246	2.0	2.1	85	
			T9M	7047	1.0	1.2	65	8588	1.0	1.2	79	9381	1.0	1.2	98	
			T10M	7182	2.0	2.1	66	8728	2.0	2.1	80	9354	2.0	2.1	87	
			T11M	7066	1.0	1.2	65	8611	1.0	1.2	79	9487	2.0	2.1	88	
			T12M	7047	1.0	1.2	65	8588	1.0	1.2	79	9381	1.0	1.2	98	
			T13M	7182	2.0	2.1	66	8728	2.0	2.1	80	9354	2.0	2.1	87	

Note: Available with phosphor converted amber LED's (nomenclature AMBC). These LED's produce light with 97% > 530 nm. Output can be calculated by applying a 0.7 factor to 4000 K lumen values and photometric files.

### Performance Data

#### Lumen Ambient Temperature (LAT) Multipliers

Use these factors to determine relative lumen output for average ambient temperature from -40°C to 104°F.

Ambient	Lumen Multiplier
0°C	1.27
10°C	1.21
20°C	1.00
30°C	0.87
40°C	0.76

#### Electrical Load

Lamp	Hour Current	System Voltage	Current (A)					
			120V	208V	240V	277V	347V	480V
30C	300	25W	0.23	0.13	0.12	0.10	-	-
	500	36W	0.33	0.19	0.17	0.14	-	-
	700	47W	0.44	0.25	0.22	0.19	-	-
30C	1000	71W	0.68	0.39	0.34	0.29	-	-
	300	36W	0.33	0.19	0.17	0.14	-	-
	500	47W	0.44	0.25	0.22	0.19	-	-
	700	71W	0.68	0.39	0.34	0.29	0.23	0.16
	1000	109W	1.01	0.58	0.50	0.41	-	-

#### Projected LED Lumen Maintenance

Data references the extrapolated performance projections for the DSWX2 LED 30C 1000 platform in a 25°C ambient, based on 50,000 hours of LED testing (tested per IESNA LM-80-08 and projected per IESNA TM-21-11).

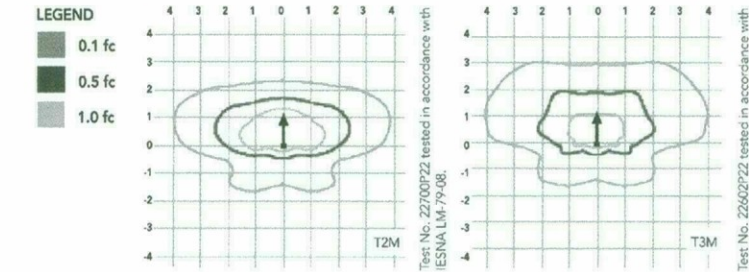
To calculate LFL, use the Lumen maintenance factor that corresponds to the desired number of operating hours below. For other lumen maintenance values, contact factory.

Operating Hours	0	25,000	50,000	100,000
Lumen Maintenance Factor	1.0	0.91	0.81	0.67

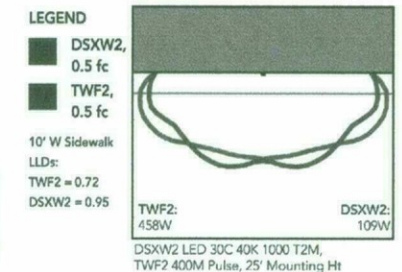
### Photometric Diagrams

To see complete photometric reports or download files for this product, visit Lithonia Lighting's D-Series Wall Size 2 homepage.

Isodistance plots for the DSWX2 LED 30C 1000 40K. Distances are in units of mounting height (25').



Distribution overlay comparison to 400W metal halide.



### FEATURES & SPECIFICATIONS

#### INTENDED USE

The energy saving, long life and easy-to-install design of the D-Series Wall Size 2 makes it the smart choice for building-mounted downway and pathway illumination for nearby any facility.

#### CONSTRUCTION

Two-piece die-cast aluminum housing has integral heat sink fins to optimize thermal management through conductive and convective cooling. Modular design allows for ease of maintenance. The LED driver is mounted to the door to thermally isolate it from the light engine for low operating temperature and long life. Housing is completely sealed against moisture and environmental contaminants (IP66).

#### FINISH

Exterior parts are protected by a zinc-nickel Super Durable TGIC thermostat powder coat finish that provides superior resistance to corrosion and weathering. A tightly controlled multi-stage process ensures a minimum .3 mil thickness for a finish that can withstand extreme climate changes without cracking or peeling. Available in textured and non-textured finishes.

#### OPTICS

Precision-molded proprietary acrylic lenses provide multiple photometric distributions tailored specifically to building-mounted applications. Light engines are available in 3000 K (90 min. CRI), 4000 K (92 min. CRI) or 5000 K (93 CRI) configurations.

#### ELECTRICAL

Light engines consist of 10 high-efficiency LEDs mounted to a metal core circuit board to maximize heat dissipation and promote long life (L70/100,000 hrs at 25°C). Class 1 electronic drivers have a power factor (PF) of >0.9, THD <2%, and a minimum 250V surge rating. When ordering the SPD option, a separate surge protection device is installed within the luminaire which meets a minimum Category C Low per ANSI/IEEE C62.41.2.

#### INSTALLATION

Included universal mounting bracket attaches securely to any 2" round or square outlet box for quick and easy installation. Luminaire has a slotted gasket assembly and attaches to the mounting bracket via corrosion-resistant screws.

#### LISTINGS

CSA certified to U.S. and Canadian standards. Rated for -40°C minimum ambient. DesignLight Consortium (DLC) qualified product. Not all versions of this product may be DLC qualified. Please check the DLC Qualified Products List at www.designlight.org to confirm which versions are qualified.

#### WARRANTY

Five year limited warranty. Full warranty terms located at www.evenlite.com/customer-resources/terms\_and\_conditions.aspx. Note: Actual performance may differ as a result of end user environment and application. All values are design or typical values, measured under laboratory conditions at 25°C. Specifications subject to change without notice.

## Weatherlite Wet Location Architectural Emergency Light

### FEATURES

- Wet location listed for indoor or outdoor applications 0°C to 50°C, IP 65 rated, suitable for NEMA 4X
- Optional cold temperature package for -20°C to 50°C applications
- Rugged die-cast aluminum construction
- Durable powder coat finish available in Dark Bronze or pure White
- Snap fit assembly with vandal resistant latch clips; no visibly hardware
- Gasket sealed to suit universal junction boxes
- Conduit entry provided on top of unit
- Available as an AC only



**FEATURES & SPECIFICATIONS**

**INTENDED USE** — Typical applications include corridors, lobbies, conference rooms and private offices.  
**CONSTRUCTION** — 16-gauge galvanized steel mounting/plaster frame with trim clips to mount open optical shape reflector.

Vertically adjustable mounting brackets that use 16-gauge flat bar hangers (included), 1/2" conduit or Channel F-bar fasteners. Provides 3-3/4" total adjustment.

Post installation adjustment possible from above or below the ceiling.

Galvanized steel junction box with bottom-hinged access covers and spring latches. Two combination 1/2" x 3/4" and three 1/2" knockouts for straight-through conduit runs. Capacity: 8 (4 in, 4 out) No. 12 AWG conductors, rated for 90°C.

Secondary housing adjustment system for precise, final ceiling-to-flange alignment.

Maximum 1-1/2" ceiling thickness.

**OPTICS** — LED light source with diffusers, recessed in a deep reflector with 55-degree cutoff. Aluminum full reflectors are optically designed to maximize lumen output and to provide superior glare control. Anodized trim color for open and wallwash reflectors are available in clear, pewter, wheat or gold. White polyester powder coat also available.

**ELECTRICAL** — High-efficiency, e60/ED 0-10V dimming driver mounted to the junction box, dims luminaire to 10% of its light output. 1% dimming option available (see E21 ordering options below).

For compatible dimmers and dimming range, refer to Dimmer Compatibility Chart on page 4.

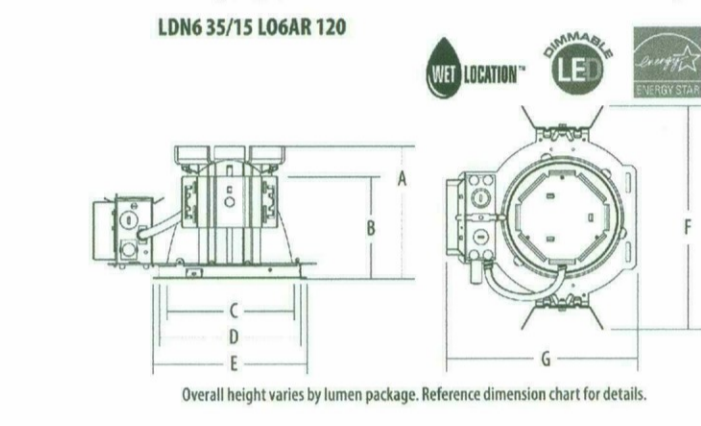
The system maintains 70% lumen output for more than 50,000 hours.

**LISTINGS** — CSA certified to US and Canadian safety standards. Open daylight (LDG) - Wet location listed. Wallwash daylight (LWG) - Rated for damp and dry locations only. ENERGY STAR® certified.

**WARRANTY** — 5-year limited warranty. Complete warranty terms located at [www.aaculitybrands.com/CustomerResources/terms\\_and\\_conditions.aspx](http://www.aaculitybrands.com/CustomerResources/terms_and_conditions.aspx)

Note: Specifications subject to change without notice.

Catalog Number	
Notes	
Type	



Maximum Overall Dimensions — All dimensions are inches (centimeters unless otherwise indicated).						
Lumen package	(A) Height	(B) Frame height	(C) Aperture	(D) Ceiling opening	(E) Outside diameter	(F) Width
600 lm	6-7/16 (16.4)	3-1/4 (7.6)	6-15/16 (17.4)	7-1/8 (18.7)	7-1/2 (19.0)	12-15/16 (32.8)
1000 lm	6-7/16 (16.4)	3-1/4 (7.6)	6-15/16 (17.4)	7-1/8 (18.7)	7-1/2 (19.0)	12-15/16 (32.8)
1500 lm	7-1/16 (19.3)	3-1/4 (7.6)	6-15/16 (17.4)	7-1/8 (18.7)	7-1/2 (19.0)	12-15/16 (32.8)

**ORDERING INFORMATION** Lead times will vary depending on options selected. Consult with your sales representative. **Example:** LDN6 35/15 L06AR 120

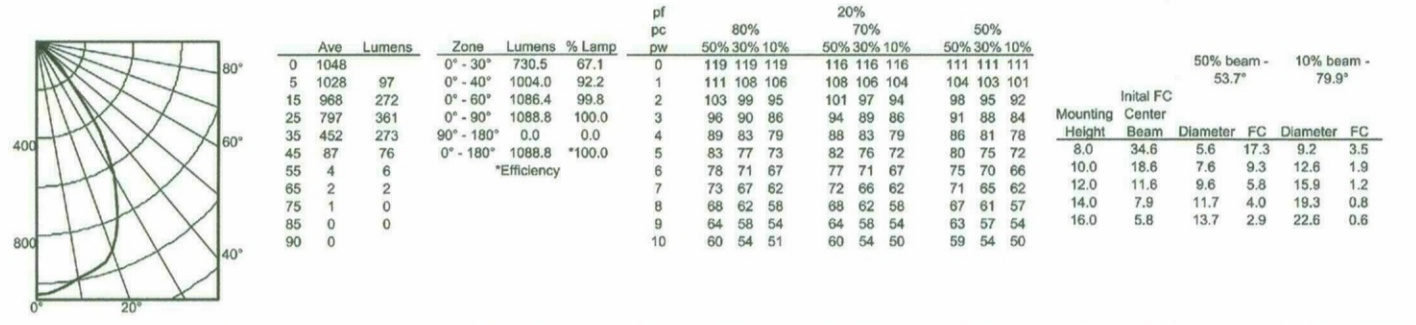
Series	Color temperature	Lumens <sup>1</sup>	Reflector	Trim color	Finish	Voltage	Options
LDN6	27° 2700 K	600 lumens	L06	Open daylight	PK	120V	EL Emergency battery pack with integral test switch <sup>4</sup>
	35° 3500 K	1000 lumens	LW6	Wallwash daylight <sup>1</sup>	WTR	277V	ELR Emergency battery pack with remote test switch <sup>4</sup>
	40° 4000 K	1500 lumens	LW6	Wallwash daylight <sup>1</sup>	GR	277V	SF Single face
		2000 lumens	LW6	Wallwash daylight <sup>1</sup>	LS	277V	TRW White painted flange <sup>7</sup>
		2000 lumens	LW6	Wallwash daylight <sup>1</sup>	WS	277V	TRBL Black painted flange

Accessories:	Notes
EAC/ESM 325 Compact Interuptible emergency AC power system	1 Approximate lumen output.
EAC/ESM 125 Compact Interuptible emergency AC power system	2 Overall height varies by lumen package. Reference dimension chart on page 1.
GRA68 JZ Oversized trim ring with 8" outside diameter <sup>8</sup>	3 Rated for damp and dry locations only.
SCAG Sloped ceiling adapter. Refer to TECH-SCA for more options.	4 Not available with ELR.
	5 Not available with emergency options.
	6 For dimensional changes, refer to chart on page 4. Not available with CF option.
	7 Not available with WS finish trim color.
	8 For use with generator supply EM power. Will require an emergency hot feed and normal hot feed.
	9 277 volt CF products require marked spacing. Install with minimal spacing between (A) Center-to-center of adjacent trim-nuts; (B), (C) Top of luminaire to overhead building member; (D) Center-to-center of building member; (E), (F) Refer to TECH-GOGE BINGS for more options.
	10 Refer to TECH-GOGE BINGS for more options.

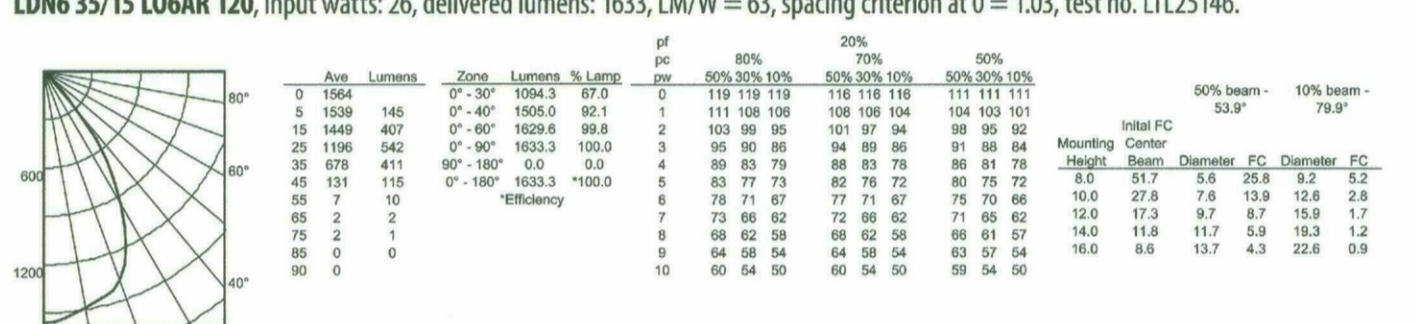
**LDN6 PHOTOMETRY**

Distribution Curve	Distribution Data	Output Data	Coefficient of Utilization	Illuminance Data at 30° Above Floor for a Single Luminaire
--------------------	-------------------	-------------	----------------------------	--

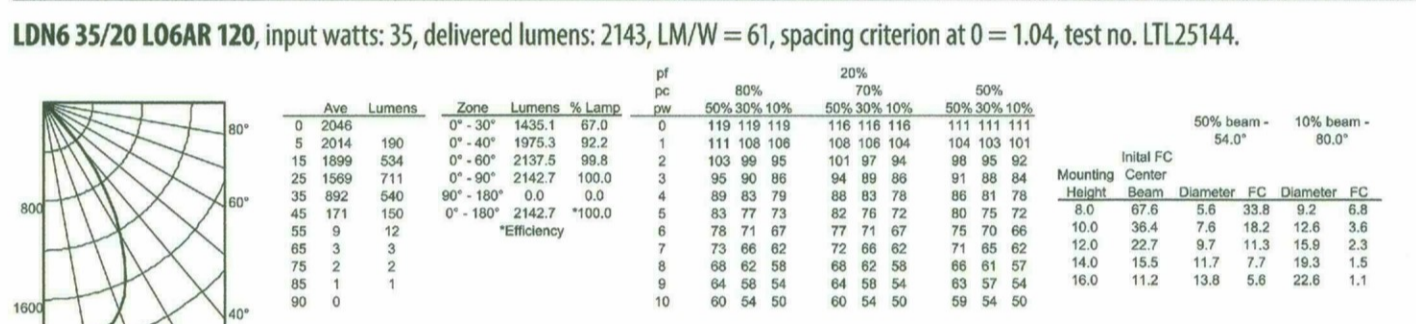
**LDN6 35/10 L06AR 120**, input watts: 18, delivered lumens: 1089, LM/W = 61, spacing criterion at 0 = 1.03, test no. LTL25148SL.



**LDN6 35/15 L06AR 120**, input watts: 26, delivered lumens: 1633, LM/W = 63, spacing criterion at 0 = 1.03, test no. LTL25146.



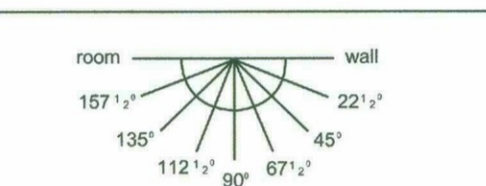
**LDN6 35/20 L06AR 120**, input watts: 35, delivered lumens: 2143, LM/W = 61, spacing criterion at 0 = 1.04, test no. LTL25144.



**Notes:**  
 • Tested in accordance with IESNA LM-79-08.  
 • Tested to current IES and NEMA standards under stabilized laboratory conditions.  
 • Actual performance may differ as a result of end-user environment and application.  
 • Actual wattage may differ by +/- 10% when operating between 120-277V +/- 10%.  
 • CR: 80 typical.

**LDN6 TECHNICAL INFORMATION**

Footcandle values are initial and tables are based on minimum of six units. For fixture-to-wall distance other than those shown, use maximum of one-to-one spacing (distance between fixtures not more than distance to wall) for best results.



**Canfieldpower Footcandle values**

**LDN6 35/10 LW6AR 120**, input watts: 18, delivered lumens: 1090, LM/W = 61, test no. LTL25147.

Plane angle	Without Burnsource Study (B)	With Burnsource Study (B)
0°	1089	1089
15°	888	888
30°	729	729
45°	603	603
60°	503	503
75°	423	423
90°	363	363

**LDN6 35/15 LW6AR 120**, input watts: 26, delivered lumens: 1639, LM/W = 63, test no. LTL25145.

Plane angle	Without Burnsource Study (B)	With Burnsource Study (B)
0°	1633	1633
15°	1306	1306
30°	1089	1089
45°	908	908
60°	773	773
75°	663	663
90°	573	573

**LDN6 35/20 LW6AR 120**, input watts: 35, delivered lumens: 2137, LM/W = 61, test no. LTL25143.

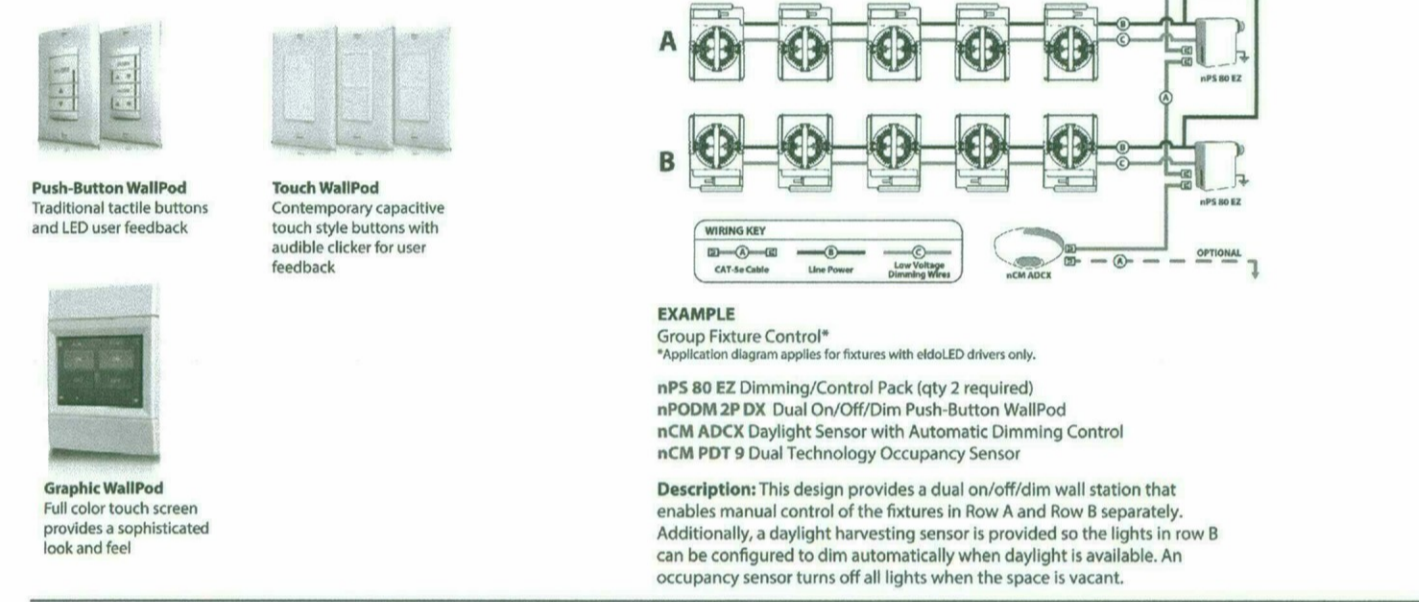
Plane angle	Without Burnsource Study (B)	With Burnsource Study (B)
0°	2137	2137
15°	1710	1710
30°	1425	1425
45°	1183	1183
60°	986	986
75°	843	843
90°	723	723

**Notes:**  
 • Tested in accordance with IESNA LM-79-08.  
 • Tested to current IES and NEMA standards under stabilized laboratory conditions.  
 • Actual performance may differ as a result of end-user environment and application.  
 • Actual wattage may differ by +/- 10% when operating between 120-277V +/- 10%.  
 • CR: 80 typical.

**LDN6 ADDITIONAL DATA**

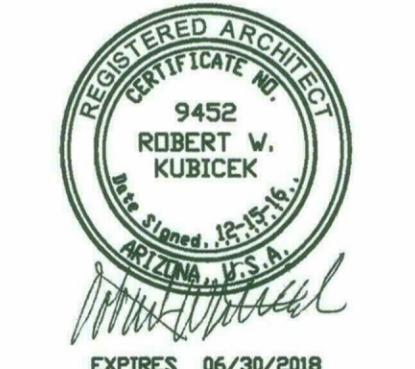
DIMMER COMPATIBILITY CHART	
Manufacturer	Model/Series
Leviton	IllumaTech - IFT10-DLX
Lutron	Novo T - NTFV-WH For an LED fixture, this switch requires a power pack. Consult Lutron for more information.
Sensor Switch	nPODM-DX
Synergy	ISO-BC 120/277
1500 & 2000 Lumen products	
Busch-Jaeger	21120-101
Jung	240-10
Leviton Lighting Controls	IllumaTech - IFT10-DLX
Lightstar Controls	ZPOOFAM120
Lutron Electronics	Novo T - NTFV Dim+ DNTV Dim+ NTFV GraphiEye - GRX-TV w/ GRX503 Energy Savr Mode - DSM-4T16-S TRX2 Module
Merten	5729
Pass & Seymour	CD48-IF
Sensor Switch	nPODM-DX
Synergy	ISO-BC 120/277
The Watt Stopper	DECV1

**Choose Wall Controls.** eLIGHT offers multiple styles of wall controls — each with varying features and user experience.



**EXAMPLE Group Fixture Control\***  
 \*Application diagram applies to fixtures with e60/ED driver only.  
 nPS R0 EZ Dimming/Control Pack (by 2 required)  
 nPODM 2P DX Dual On/Off/Dim Push-Button WallPod  
 nCM DICKS Daylight Sensor with Automatic Dimming Control  
 nCM PDT 0 Dual Technology Occupancy Sensor  
**Description:** This design provides a dual on/off/dim wall station that enables manual control of the fixtures in Row A and Row B separately. Additionally, a daylight harvesting sensor is provided so the lights in row B can be configured to dim automatically when daylight is available. An occupancy sensor turns off all lights when the space is vacant.

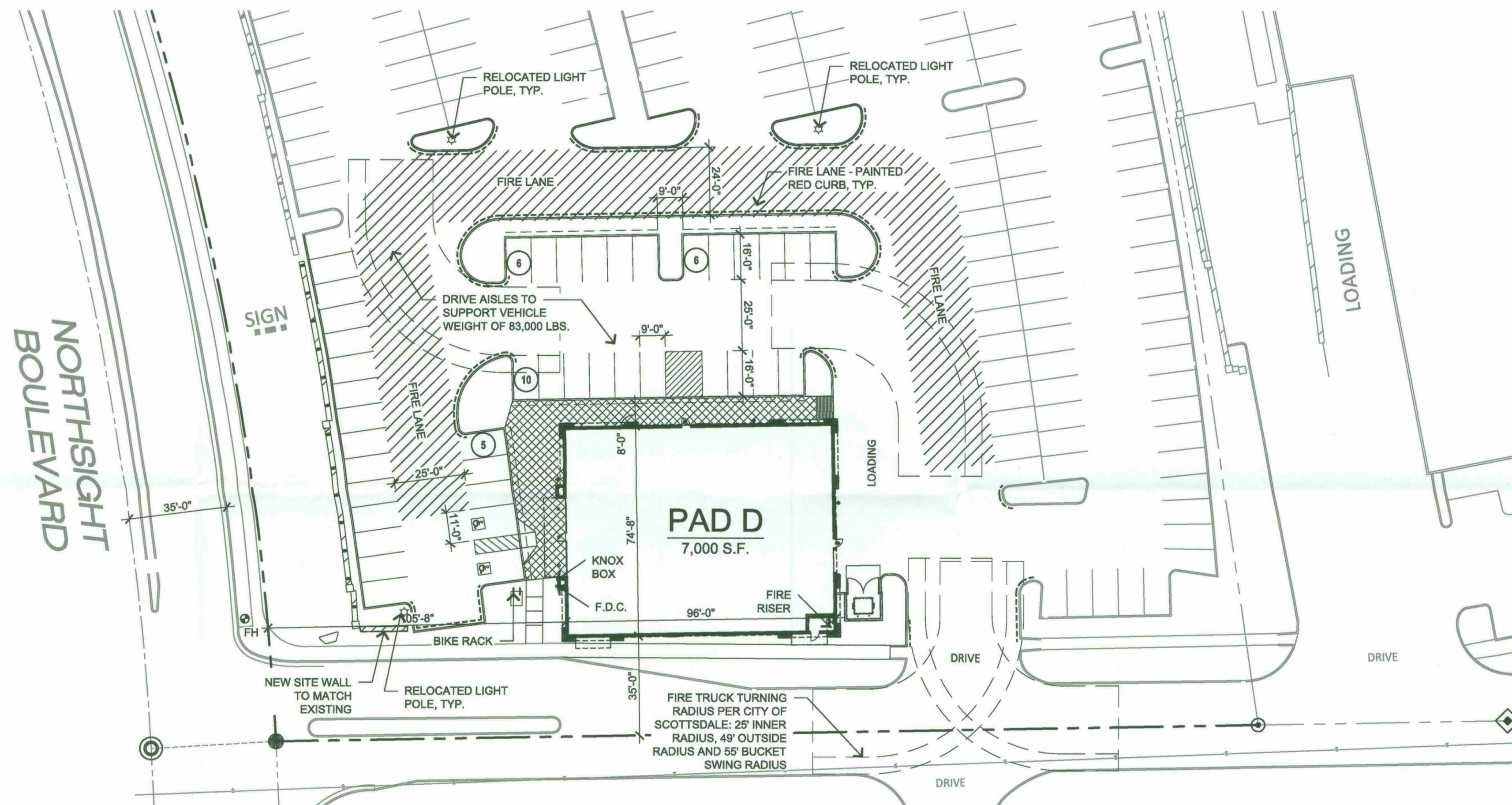
**SONORA VILLAGE - PAD D**  
 FRANK LLOYD WRIGHT BOULEVARD AND PIMA ROAD  
 SCOTTSDALE, ARIZONA  
 DATE: 12-15-2015



331-17 APPROVED FINAL PLANS PLANNING 6/12/17 APPROVED BY

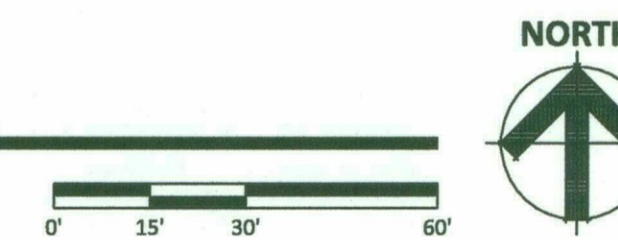
PM-3  
 #14214.50  
**RKAA**  
 ARCHITECTS, INC

© 2016 R K A A ARCHITECTS, INC. ALL RIGHTS RESERVED. THIS DRAWING IS AN INSTRUMENT OF SERVICE. IT IS THE PROPERTY OF R K A A ARCHITECTS, INC. AND MAY NOT BE DUPLICATED, USED OR DISCLOSED WITHOUT WRITTEN PERMISSION OF THE ARCHITECT.



**ENLARGED SITE PLAN**

SCALE: 1" = 30'-0"



**PAD D SITE DATA**

EXISTING ZONING:	C-3
GROSS SITE AREA:	6.13 ACRES (266,973 S.F.)
NET SITE AREA:	4.99 ACRES (217,321 S.F.)
PROPOSED USE:	RETAIL / RESTAURANTS
BUILDING HEIGHT:	30' MAX ALLOWABLE
SITE PARKING REQUIRED:	
PAD D (7,000 S.F.)	
MIXED-USE COMMERCIAL AT 1/300	23 SPACES
TOTAL REQUIRED:	23 SPACES
SITE PARKING PROVIDED:	27 SPACES
ACCESSIBLE SPACES REQUIRED (23* .04):	1 SPACE
ACCESSIBLE SPACES PROVIDED:	2 SPACES
BICYCLE PARKING AT 1/10	2 SPACES

331-17  
**APPROVED**  
 FINAL PLANS PLANNING  
 6/12/17  
 DATE APPROVED BY

THIS SITE PLAN HAS BEEN PREPARED WITHOUT THE AID OF A SURVEY. ALL PROPERTY BOUNDARIES ARE ROUGH APPROXIMATIONS. THIS DRAWING IS TO BE USED FOR CONCEPTUAL PURPOSES ONLY AND IT IS NOT TO BE THE BASIS FOR ANY LEGALLY BINDING DOCUMENTATION.

**SONORA VILLAGE - PAD D**  
 FRANK LLOYD WRIGHT BOULEVARD AND PIMA ROAD  
 SCOTTSDALE, ARIZONA  
 DATE: 05/16/2017 (PRELIMINARY)

© 2016 RKA  
 ARCHITECTS, INC. ALL  
 RIGHTS RESERVED.  
 THIS DRAWING IS AN  
 INSTRUMENT OF  
 SERVICE. IT IS THE  
 PROPERTY OF RKA  
 ARCHITECTS, INC. AND  
 MAY NOT BE  
 DUPLICATED, USED OR  
 DISCLOSED WITHOUT  
 WRITTEN PERMISSION  
 OF THE ARCHITECT.

SP-2  
 #14214.50

