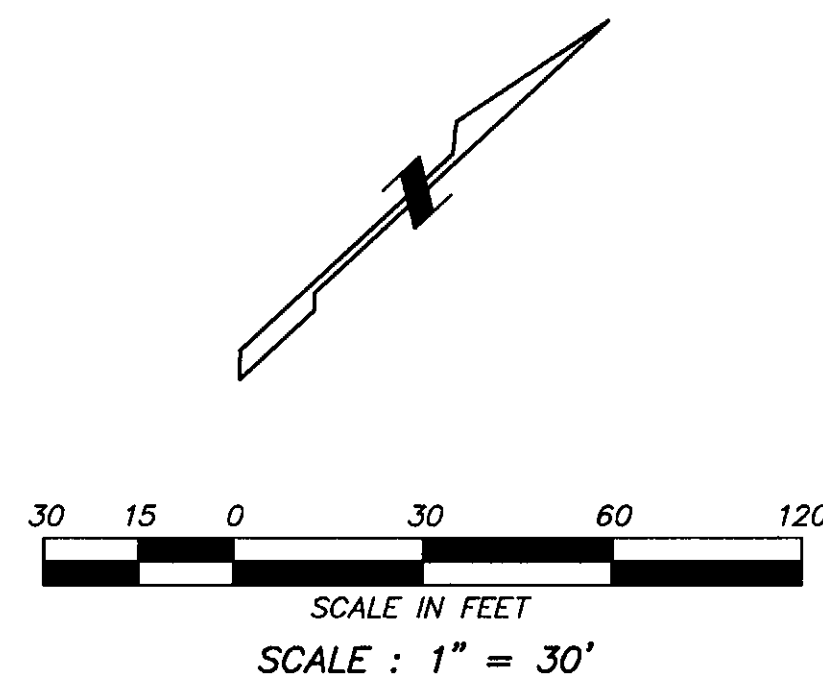


Full Size or Largest Size
(site plan, landscape, elevations)



$\Delta=43^{\circ}12'33''$
 $R=2500.00'$
 $L=1885.36'$
 $CH=S21^{\circ}11'22''W$
 $CH\ DIST=1841.00'$

(PUBLIC ROADWAY)
HAYDEN ROAD
 $L=541.86'$

$\Delta=11^{\circ}45'54''$
 $R=2435.00'$
 $L=500.00'$
 $CH=S32^{\circ}26'26''W$
 $CH\ DIST=499.12'$

FOUND BY NAIL
 $N\ 42^{\circ}47'38''\ E$
 $2538.20'$
 $L=190.00'$

TRACT "LL"
PASEO VILLAGE AND
BK. 184, PG. 13, M.C.R.
A.P.N. 177-03-226
MCCORMICK RANCH PROPERTY
OWNERS ASSN INC
10527-0632 M.C.R.

TRACT "B"
A.P.N. 177-03-216

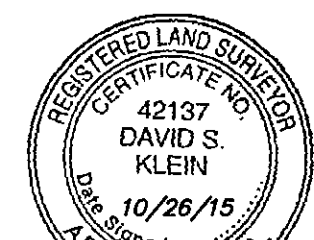
$\Delta=42^{\circ}06'57''$
 $R=330.00'$
 $L=242.57'$
 $CH=S08^{\circ}37'57''W$
 $CH\ DIST=237.15'$

$\Delta=55^{\circ}13'09''$
 $R=300.00'$
 $L=289.13'$
 $CH=S15^{\circ}11'03''W$
 $CH\ DIST=278.07'$

$L=213.52'$
VIA PASEO DEL SUR
(PUBLIC ROADWAY)

LEGEND

- BOUNDARY LINE
- CENTER LINE OR MONUMENT LINE
- CONCRETE SURFACE
- DECORATIVE BRICK SURFACE
- 24 INCH VERTICAL CURB & GUTTER
- 6 INCH CONCRETE CURB
- INDICATES DRIVEWAY (MEANS OF ACCESS)
- WALL
- FENCE
- INDICATES BOUNDARY CORNER
- NOTHING FOUND OR SET
- FOUND 1" IRON PIPE
- NO IDENTIFICATION
- FOUND 60D NAIL
- NO IDENTIFICATION
- FOUND CITY OF SCOTTSDALE
- BRASS CAP FLUSH
- CALCULATED POSITION PER
- BK. 154, PG. 13, M.C.R.
- NO MONUMENT FOUND OR SET
- SCHEDULE B ITEM
- BACK FLOW PREVENTER
- DRYWELL OR CATCH BASIN
- ELECTRIC BOX
- ELECTRIC TRANSFORMER
- GAS ASSEMBLY
- GAS MANHOLE
- GAS MARKER
- GUARD POST OR GATE POST
- GAS VALVE
- HANDICAPPED SPACE
- LIGHT POLE
- METAL COVER (RECTANGULAR)
- PEDESTRIAN ACCESS RAMP
- SEWER MANHOLE
- TELEPHONE RISER
- CABLE TELEVISION BOX
- WATER METER
- A.P.N.
- M.C.R.
- R/W
- BK.
- PG.
- (TYP.)



David S. Klein
EXPIRES 3/31/17

ALTA / ACSM LAND TITLE SURVEY
7300 VIA PASEO DEL SUR
SCOTTSDALE, AZ 85258

21415 N. 23rd Avenue, Phoenix, AZ 85027
623-869-0223 (office) 623-869-0726 (fax)
www.superiorsurveying.com
info@superiorsurveying.com

SUPERIOR
SURVEYING SERVICES, INC.

DWN: JW CHK: DK
SHEET 2 OF 2
DATE: 10/28/15
JOB NO.: 151008