

Exterior Building Color & Material Samples

Color Drawdowns

Archaeological Resources

Airport Vicinity Development Checklist

Parking Study

Trip Generation Comparison

Parking Master Plan

Splitface Masonry Units

Grand Blanc
CEMENT PRODUCTS



26-DR-2017
08/21/17

Architectural • Sustainable • Reputable



Rich Colors & Texture

Splitface Masonry Units offer designers and contractors the ability to create beautiful projects with our rich colors and textures. A unique combination of elegance and balance gives Splitface Masonry the appeal that customers are often looking for.

Clean Lines & Definition

Scored Splitface Units combined with other textures and colors add bold lines and definition to any building. Decorative patterns are easily produced giving designers flexibility when choosing the right building materials for any project.



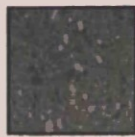
Long Life Cycle

Splitface Masonry Units allow Architects to provide their clients with sustainable solutions for years of reliability and beauty. Manufactured to exceed industry expectations, our Splitface products are produced with extremely high standards and quality assurance.

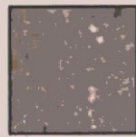
SPLITFACE COLOR SELECTION



Anastasia



Aswan



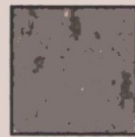
Bedrock



Bellagio



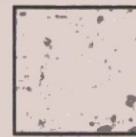
BHA Blend



Blackhills



Boardman



Bone



Bourbon



Bradberry



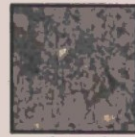
Cabernet



Canyon Tan



Cavern Limestone



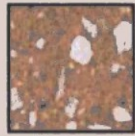
Charcoal



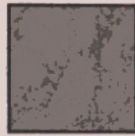
Chardonnay



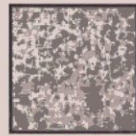
Cimaron Blend



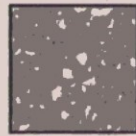
Cinnamon



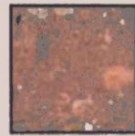
Country Blend



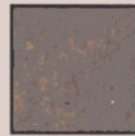
Cream



Dark Grey



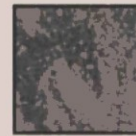
Dark Red



Desert Blend



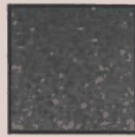
Desert Red



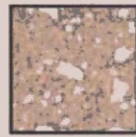
Dominic



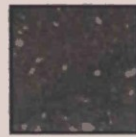
Earthstone



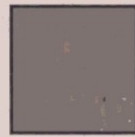
Everest



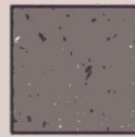
Fawn



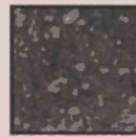
Firestorm



Forensic



Frankfort



Garnet



Gothic



Grandville



Graystone White



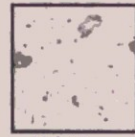
Great White



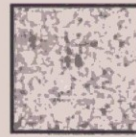
HMS



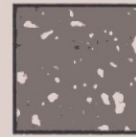
Irish Hills



Light Bone



Light Grey



Limestone Brown



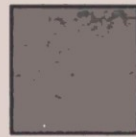
Limestone Red



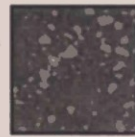
Limestone Tan



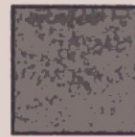
Macon



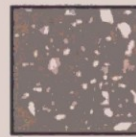
Meadowbrook



Merlot



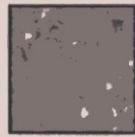
Merrill



Mesquite



Metallica



Meteorite



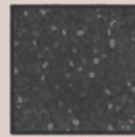
Midland



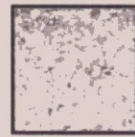
Milander



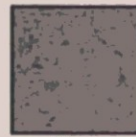
Mustang



Nashville



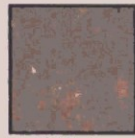
Natural
Limestone



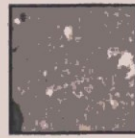
Niagra



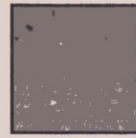
Oak



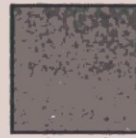
Old Tudor



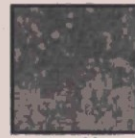
Petoskey



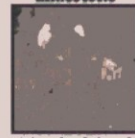
Pinto



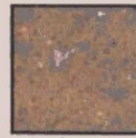
Plymouth



Renaldo



Riverbed Sand



Riverbend Tan



Rustic Red



Sagebrush



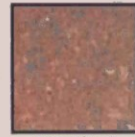
Salmon



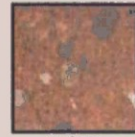
Salzburg



Sandstone



SED Blend



Sedona



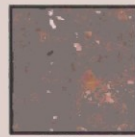
Sweetwater



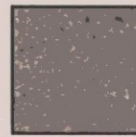
Tecumseh



THS



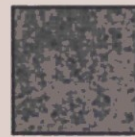
TM Blend



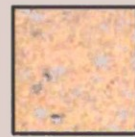
Tortola



Trevor



Unicorn



Vanilla



White



Woodside

Splitface Masonry Units Scored Splitface Masonry Units Fluted Splitface Masonry Units Specifications

PART 1 - GENERAL

SUBMITTAL

Submit color samples for selection from manufacturer's group. Submit product literature, certifications, test reports and full size samples of each color that is specified.

QUALITY ASSURANCE

Certifications: **Splitface Masonry Units** shall comply with the recommendations of the National Concrete Masonry Association, and conform to ASTM C90, for hollow and solid load bearing units. Splitface Masonry Units shall be normal weight block, withstanding compression test loads of at least 3,000 psi for individual units, or 3,500 psi for an average of five units; basing load figures on the average net area of the blocks. Units shall meet or exceed requirements for ASTM C55-96e1. Splitface Masonry Unit samples shall be submitted for establishing an approved color and texture.

Scored Splitface Masonry Units and **Fluted Splitface Units** shall comply with recommendations of the National Concrete Masonry Association and must conform to the same specifications and requirements as full Splitface Masonry Units. Samples of units shall be submitted for approval of color and texture.

RELATED INFORMATION

Fire Resistance: Hourly fire rating information, defined and required by NCMA TEK NOTES, available at www.grandblancement.com.

PART 2 - PRODUCTS

PRODUCT NAME

Splitface Masonry Units Scored
Splitface Masonry Units Fluted
Splitface Masonry Units
(Four-Ribbed & Eight-Ribbed Fluted)

MANUFACTURER

Grand Blanc Cement Products, Inc.
10709 S. Center Road
Grand Blanc, MI 48439
P 800-875-7500 F 810-694-2995
www.grandblancement.com

PART 3 - EXECUTION

LAYING MASONRY WALLS

All Splitface Masonry Units shall be drawn from more than one pallet at a time and must be laid using the best concrete masonry practices. Lay block with the faces level, plumb and true to the mason line strung horizontally at splitface side of the block. Both horizontal and vertical joints should be 3/8" on the finished side of the wall. Joints should be neatly and uniformly tooled after they are finger-hard. Cut pieces should be sized and placed properly to maintain bond and consistency.

INSTALLATION

Lighting: Always use adequate lighting for masonry work. For even and consistent illumination, always place lights at a reasonable distance from the wall. For best results, do not use trough lighting.

Cutting: Use the correct type of motor driven masonry saws to make all cuts, including those for bonding, holes, boxes etc. Use diamond or abrasive blades and make neat cuts to provide the best appearance. Avoid cuts that may alter or detract from the finished look of Splitface Masonry.

MORTAR BED & JOINTING

Units shall be laid with full mortar coverage on head and bed joints without blocking cores. All joints shall be tooled when finger-print hard into a concave shape. Remove mortar from the face of masonry before it sets. Tuck-point all joints of scored units for creating proper appearance. All exterior scored units must be tuck-pointed to prevent water penetration. **DO NOT RAKE JOINTS.**

FINAL CLEANING

During the installation process, walls should be kept as clean as possible by using brushes, sponges, etc. Never allow excess mortar or smears to harden on the finished surfaces of block. Avoid using harsh cleaning methods that will result in damaged or marred surfaces. Clean finished walls with **Custom Masonry Cleaner** by PROSOCO. Manufacturer's instructions should be strictly followed for cleaning including a completed and thorough rinse. Permanent damage to the block could result if the exact instructions are not adhered to.

Note: Consult NCMA TEK NOTES regarding proper installation techniques for concrete masonry.



Grand Blanc
CEMENT PRODUCTS

10709 S. Center Rd.
Grand Blanc, MI 48439
Ph: 800-875-7500 Fax: 810-694-2995



FRONT FACE

BRUNISH BLOCK SAMPLE - FOR
THE NORTH SCREEN WALL
IDRA ARCHITECTS 07/12/17

TAS

GRAND BLANC CEMENT PRODUCTS, INC
www.grandblancement.com 800-875-7500
PRODUCT: BURNISHED MASONRY UNIT
COLOR: TAS
SEALER: PHYLON 1422 ACRYLIC
RON HUNT CELL: (810) 691-0016

Burnished Masonry Units have one coat of factory applied sealer and require a field coat of sealer after final cleaning to achieve the look of submitted samples. Refer to 3-Part Burnished Specification for complete details at www.grandblancement.com

July 7, 2017

Jennifer Davidson
Water Conservation Specialist
Scottsdale Water
Conservation Office
9312 N. 94th St.
Scottsdale, Arizona 85258

APPROVED
Date: 7/11/17
Case #: 8-PA-2017
Signature: 

RE: **Scottsdale Fashion Square Lux Wing Renovation – Entry Water Feature**

Dear Ms. Davidson:

This letter is to confirm that the Entrance Water Feature designed as part of the SFS Lux Wing Renovation Project is compliant to Scottsdale, Arizona – Code of Ordinances, Section 49-242 – Limitation on water features for commercial users, new Industrial users and common areas of residential developments, Division 3 – Backflow Prevention and Cross-Connection Control. Key water feature design information, as required, and specific for code compliance is listed as follows:

- 1) Project Owner: The Macerich Company, 11411 Tatum Blvd., Phoenix, Arizona, macerich.com.
- 2) Project Representative: Kathryn Zmrzlik, Design Manager, Macerich, Kathryn.Zmrzlik@macerich.com.
- 3) City of Scottsdale, Planning & Development, assigned plan reviewer: Bryan D. Cluff, LEED AP, Senior Planner, bcluff@scottsdaleAZ.gov, 480.312.2258.
- 4) Planning & Development DRB Project No.: 8 – PA – 2017.
- 5) Project Water Feature Designer: Fountain Source Engineering and Design, Inc., 122 W. Sierra Madre Blvd., Suite B, Sierra Madre, CA 91024, fountain-source.com, Contact: Daniel Netz.
- 6) Water Feature System Key Design Points and Conditions:
 - a) Water flow in basin to side-spill over all edges of the basin and recover by gravity flow to a dedicated surge/recovery tank located to the parking P2 level equipment space. No vertical spray or fine mist is developed by the design.
 - b) Uses 100% potable water.
 - c) Recycling Pump. Display pump recycles 100% of system water from surge/recovery tank to basin.
 - d) Location and siting. Not visible from street, refer to attached Site Plan showing water feature off-set from N. Goldwater Blvd. (211'-6") and Water Feature Perspective Drawing with dimensions (36' long x 6' wide).

26-DR-2017
08/21/17

- 7) Backflow Prevention Compliance. Potable water to water feature system shall be via AIR GAP from the supply line to the water feature system surge/recovery tank located above tank overflow condition.

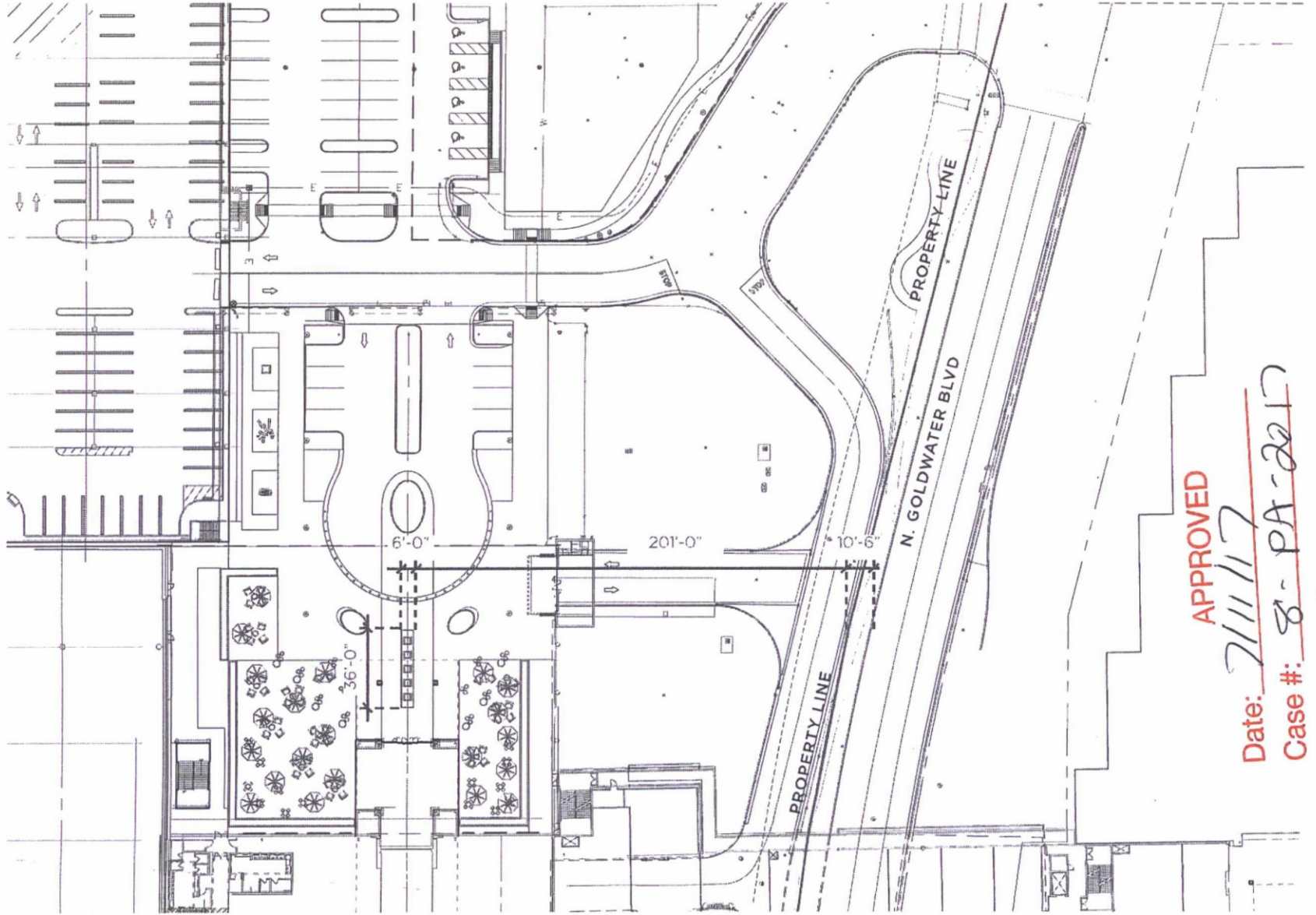
Please let me know if you require any clarification or require further information to the information provided herein?

Sincerely,



Daniel Netz
President

cc: Joseph Slajus, JPRA Architects, LTD.
Judy Lee, OJB Landscape Architecture
Kathryn Zmrzlik, Macerich



APPROVED

Date: 7/11/17
 Case #: 8-PA-2017

Signature

APPROVED

Date:

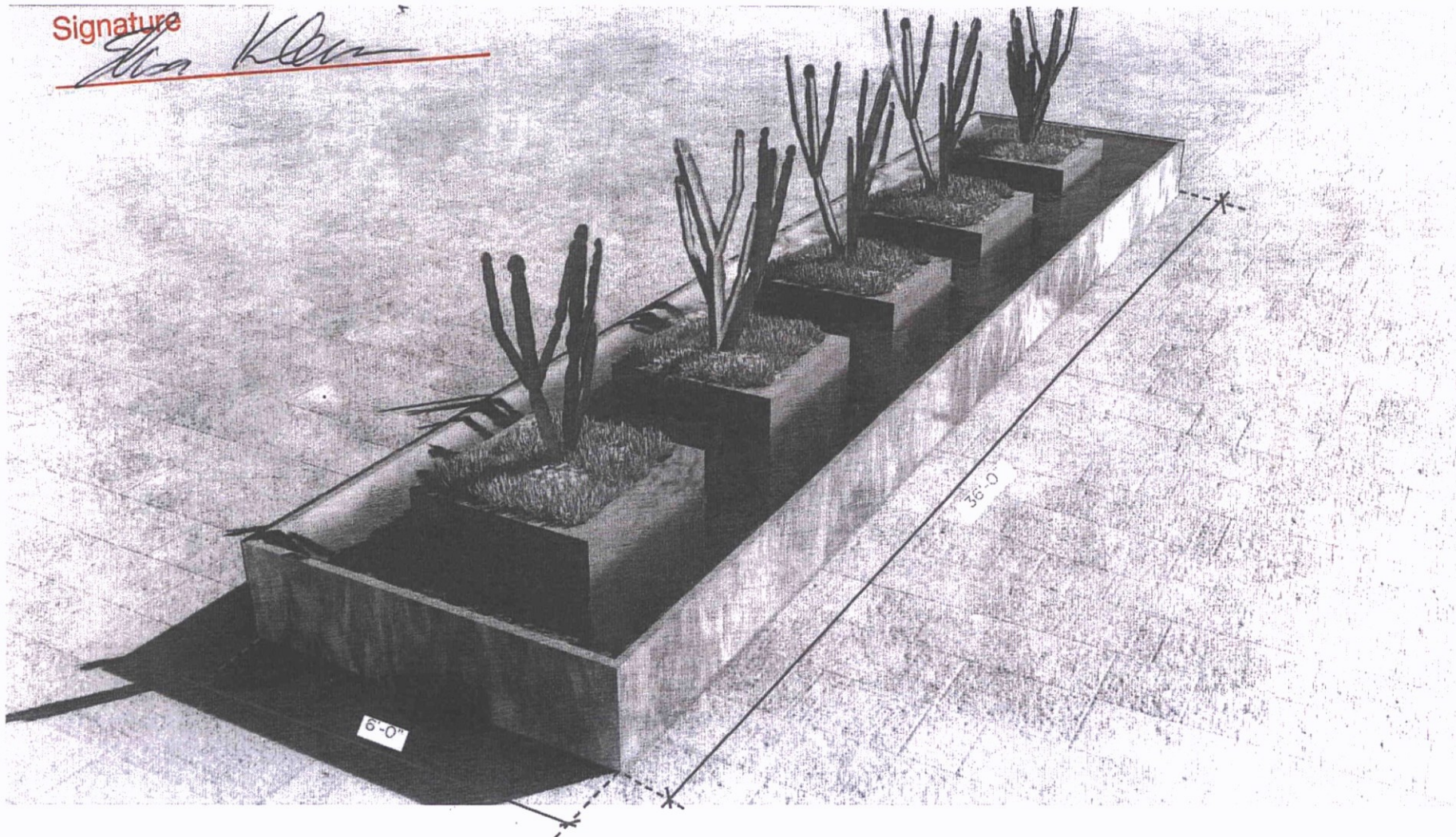
7/11/17

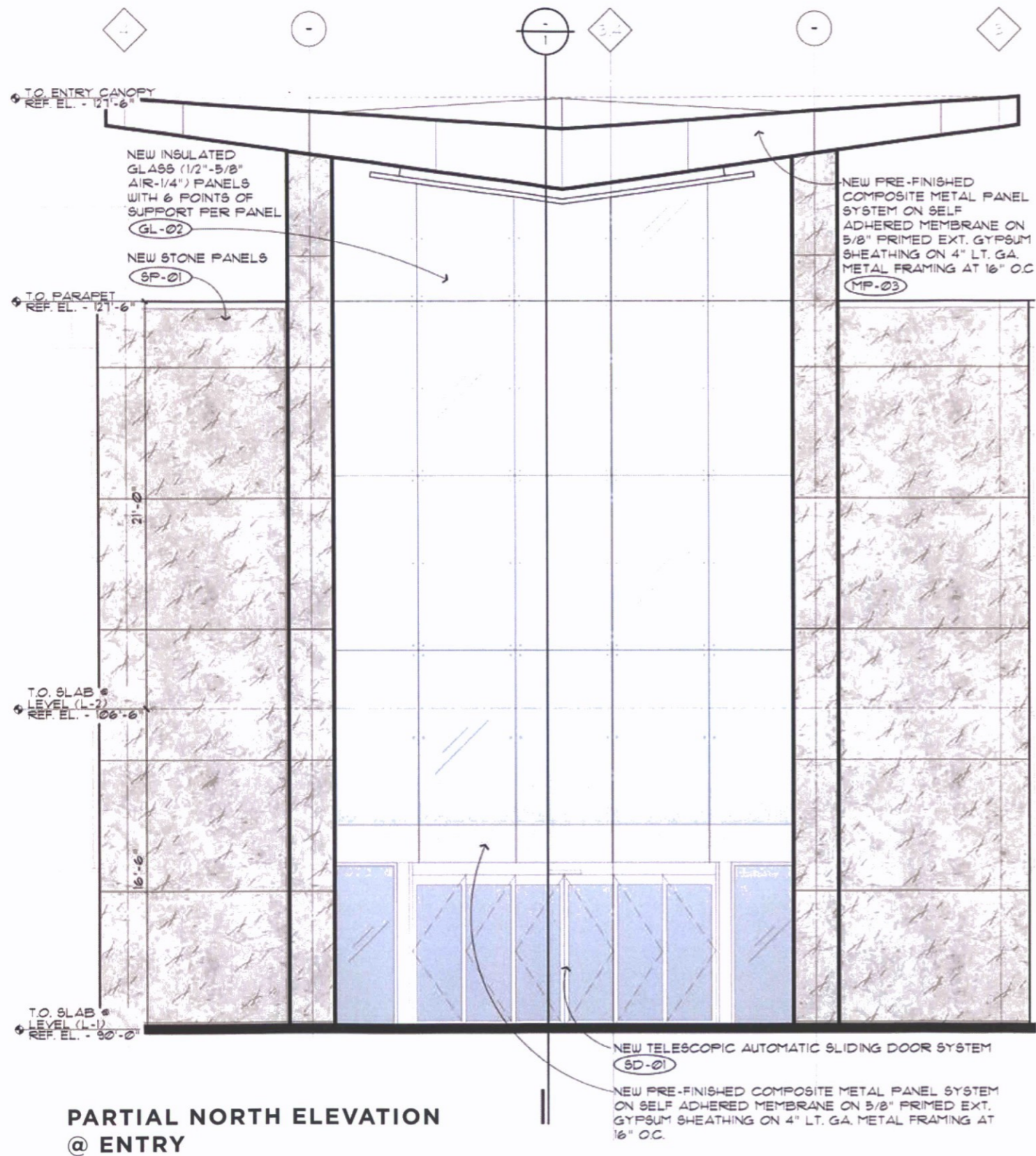
Case #:

8-PA-2017

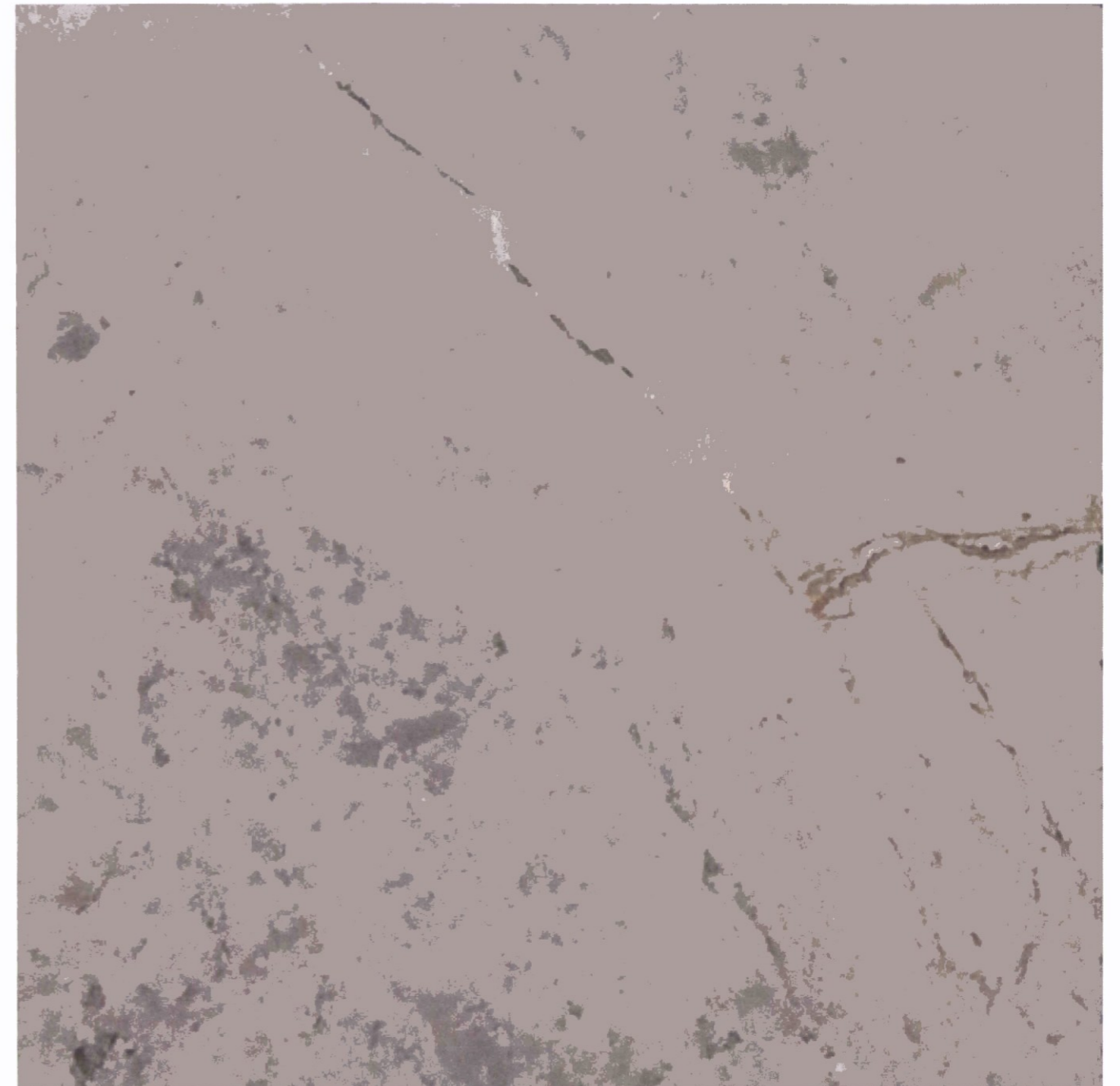
Signature

Eva Klein

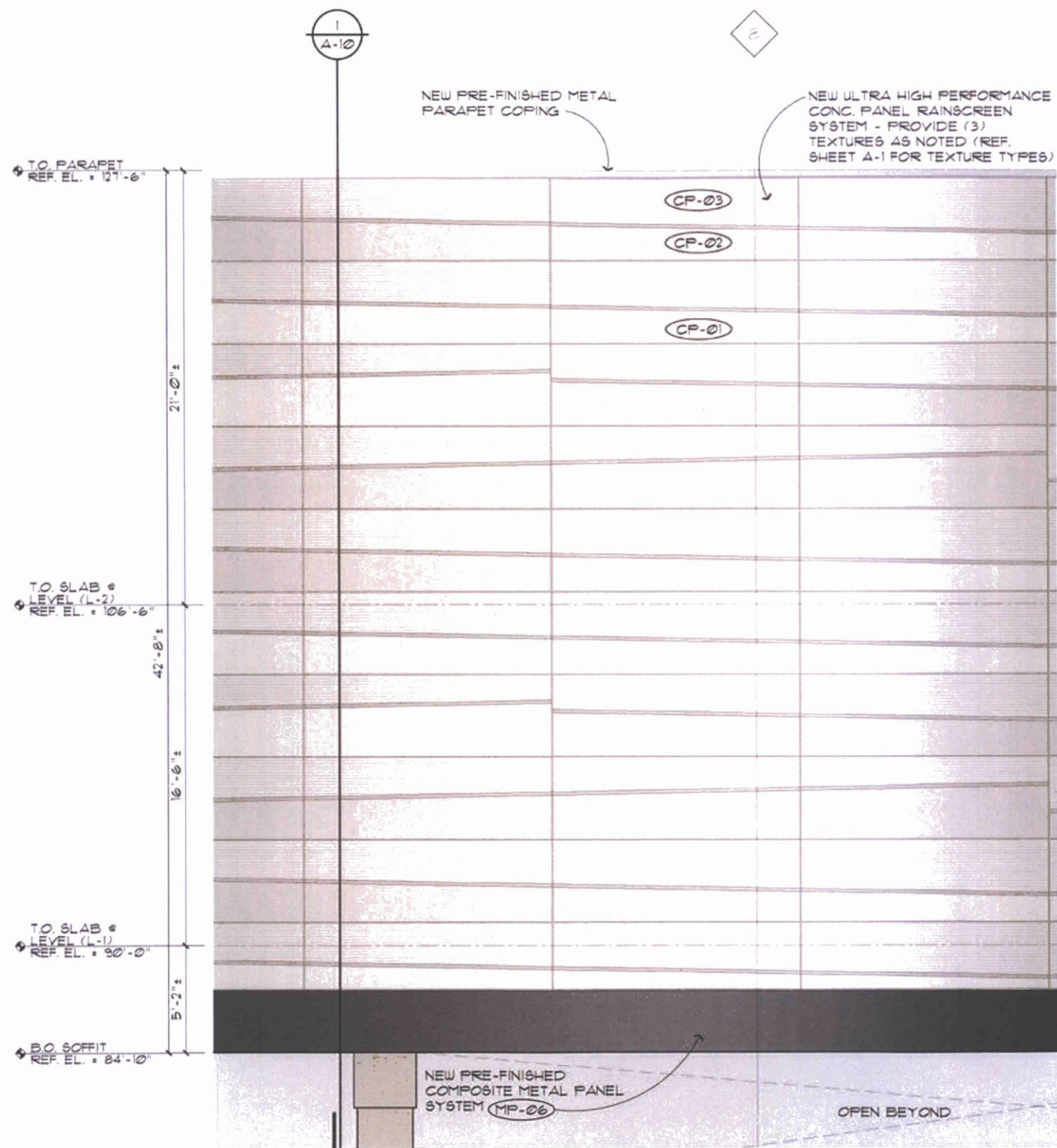




**PARTIAL NORTH ELEVATION
@ ENTRY**



SP-01
STONE WALL PANEL - GLACIER GREY



**PARTIAL NORTH ELEVATION
@ BRIDGE**



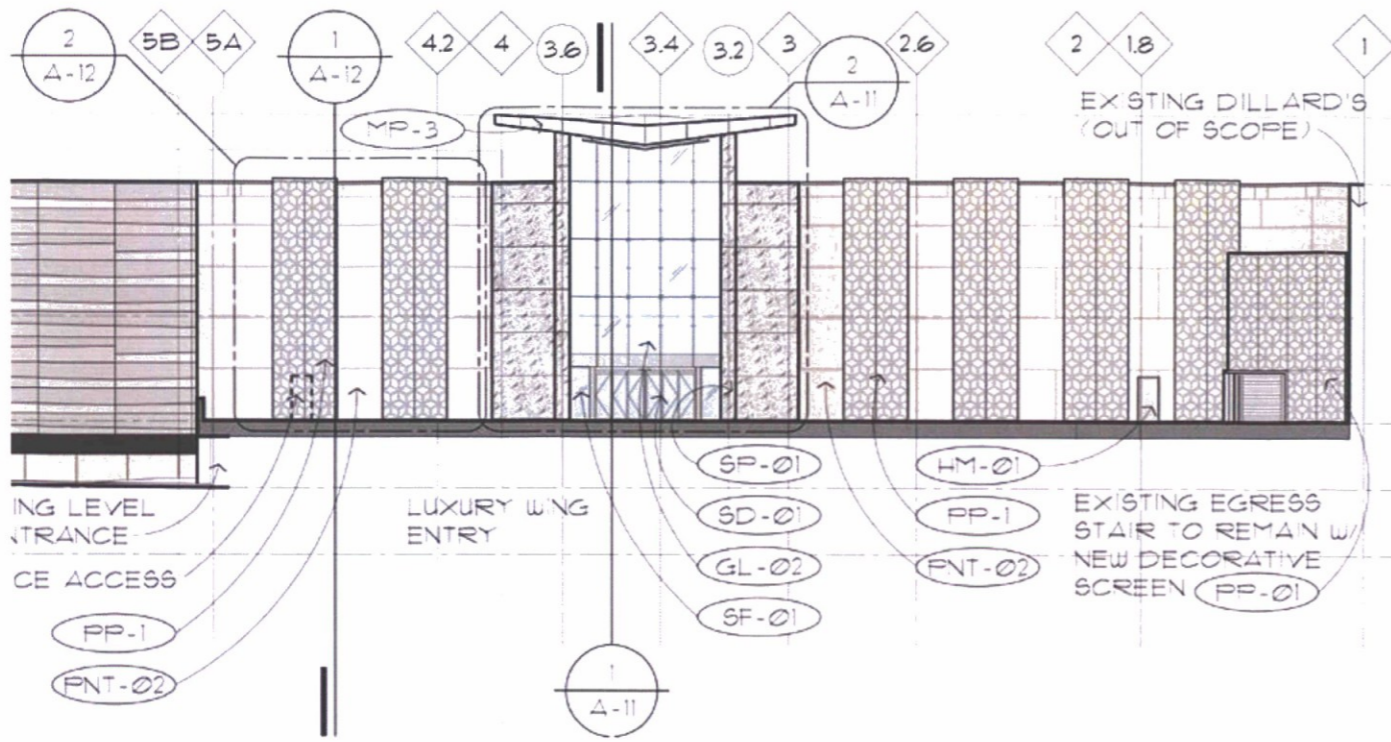
CP-01
U.H.P. CONCRETE PANEL - TEXTURE: SMOOTH / COLOR: BONE



CP-02
U.H.P. CONCRETE PANEL - TEXTURE: ROUGH 03 / COLOR: BONE



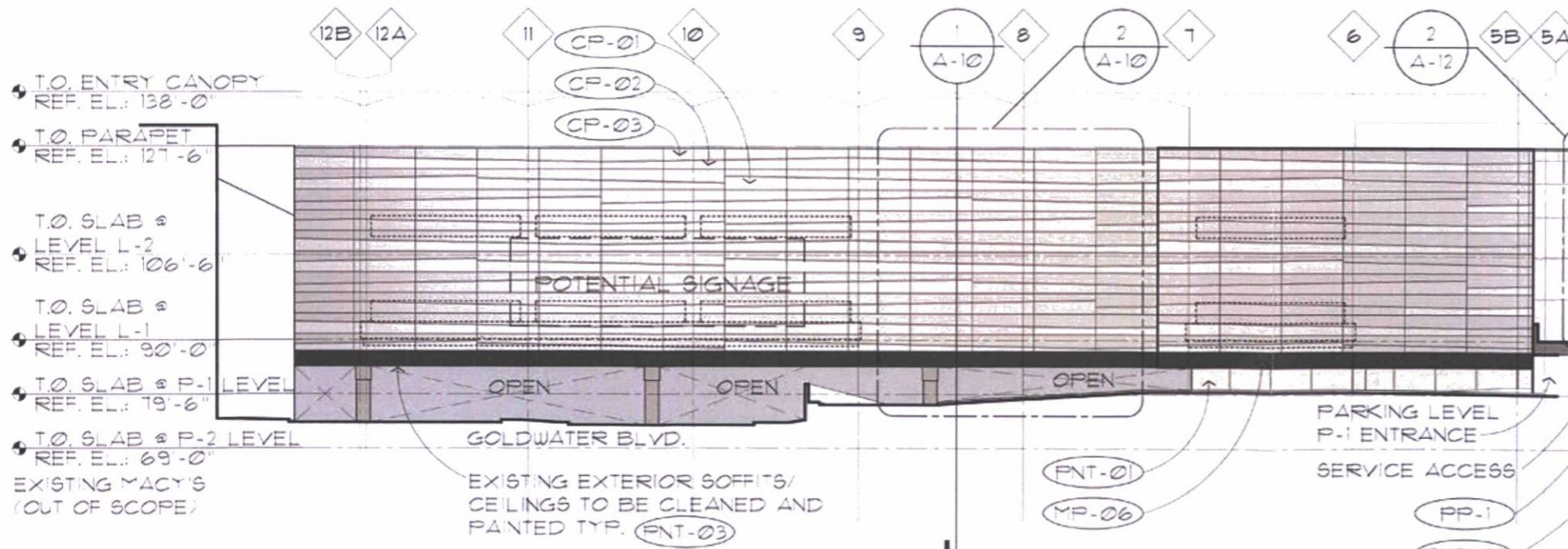
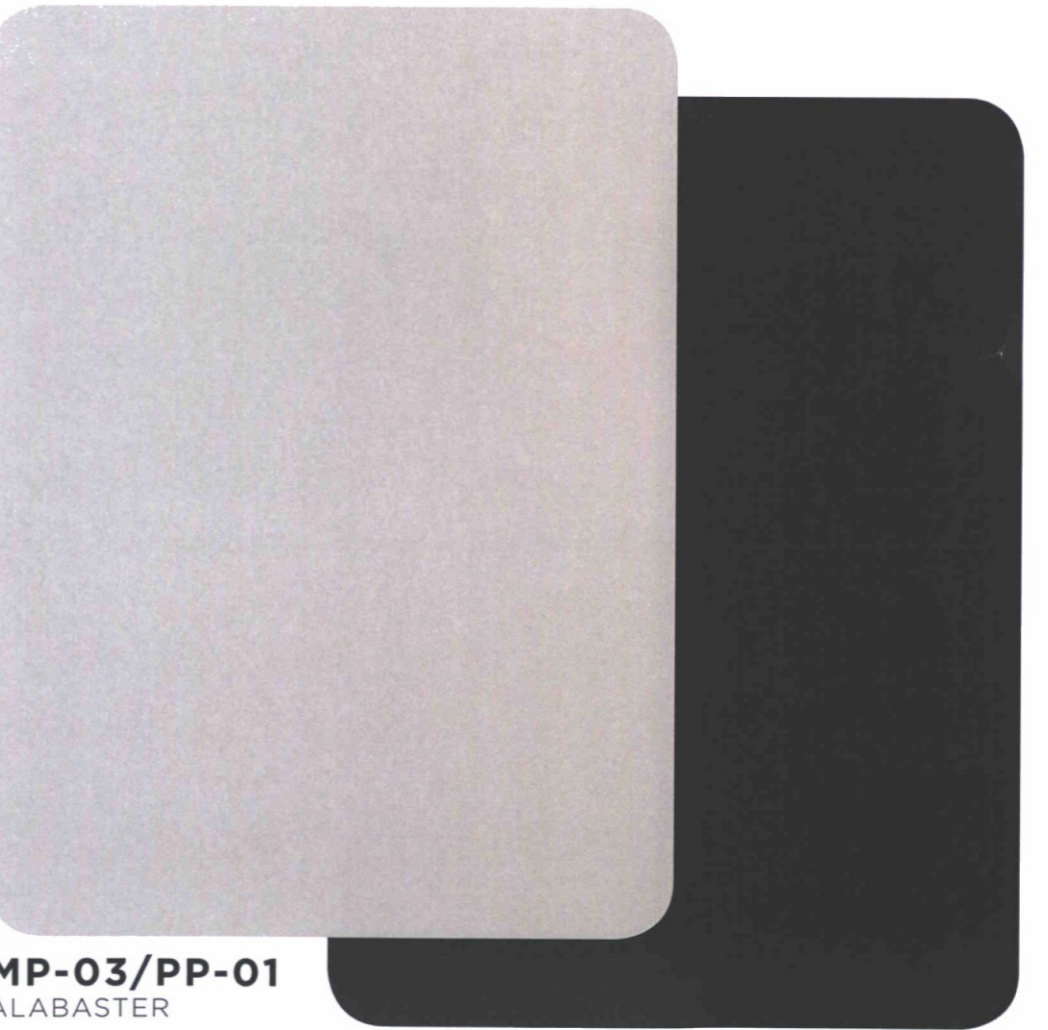
CP-03
U.H.P. CONCRETE PANEL - TEXTURE: ARBOS 02 / COLOR: BONE



PARTIAL NORTH ELEVATION

**SD-01
&
SF-01**

PRE-FINISHED ALUMINUM CURTAIN WALL SYSTEM / SLIDING DOORS



PARTIAL NORTH ELEVATION

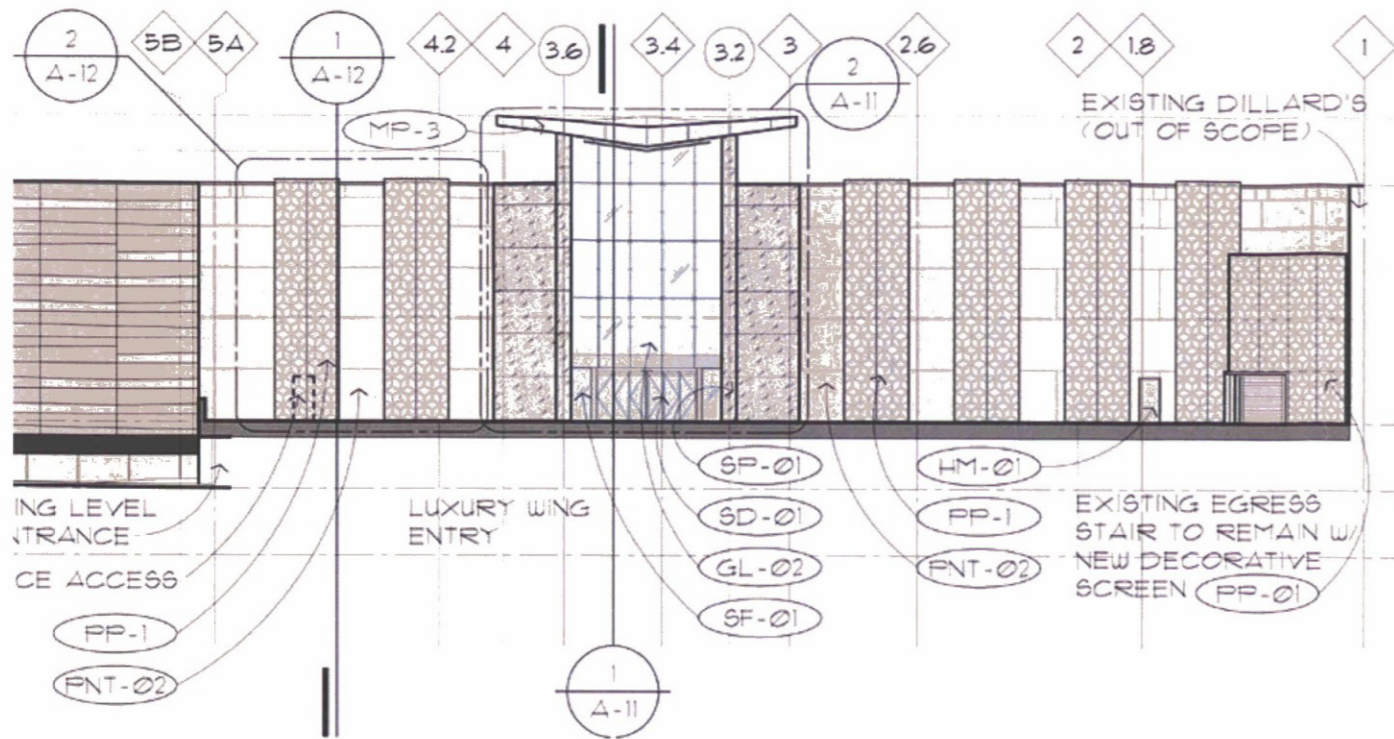
MP-03/PP-01
ALABASTER

PRE-FINISHED COMPOSITE
METAL PANEL

MP-06
NATURAL BRUSHED GRAPHITE

SCOTTSDALE

Fashion Square



PARTIAL NORTH ELEVATION



PNT-01

SW 7547: SANDBAR



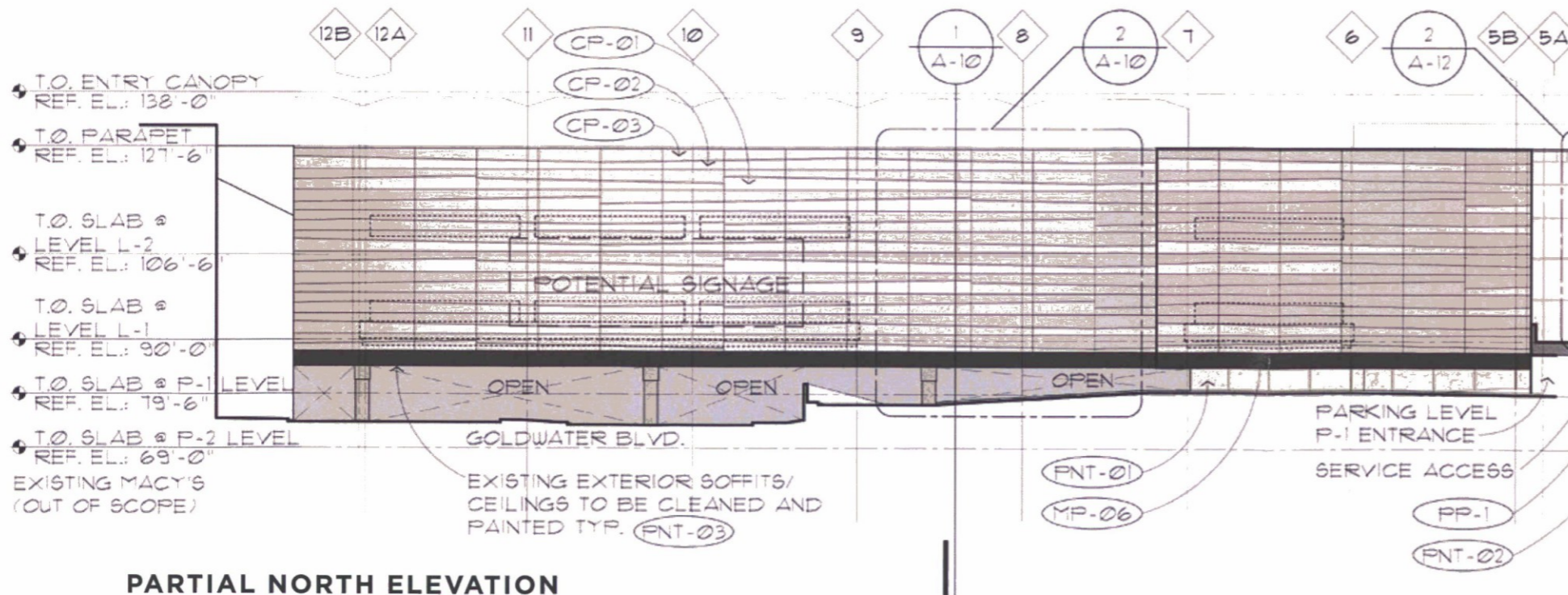
PNT-02 & HM-01

SW 7541: GRECIAN IVORY



PNT-03

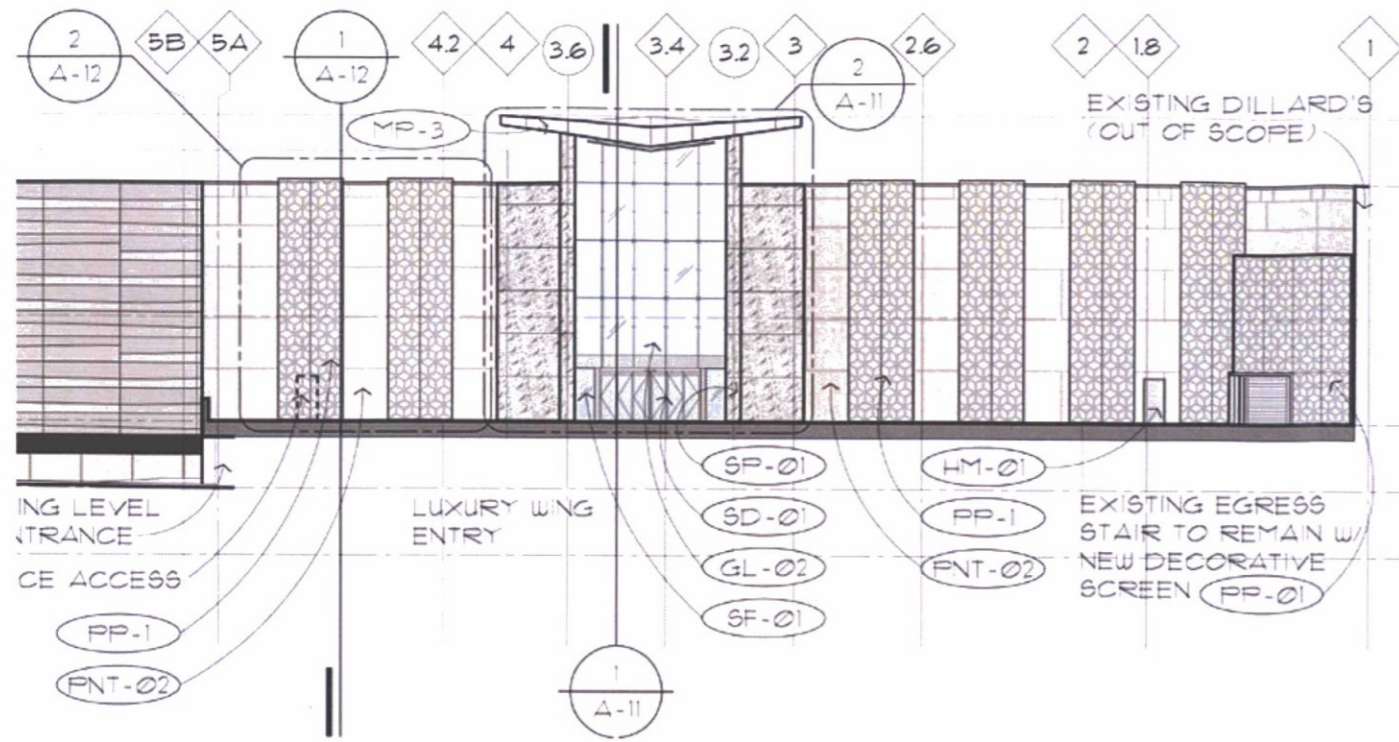
SW 7564: POLAR BEAR



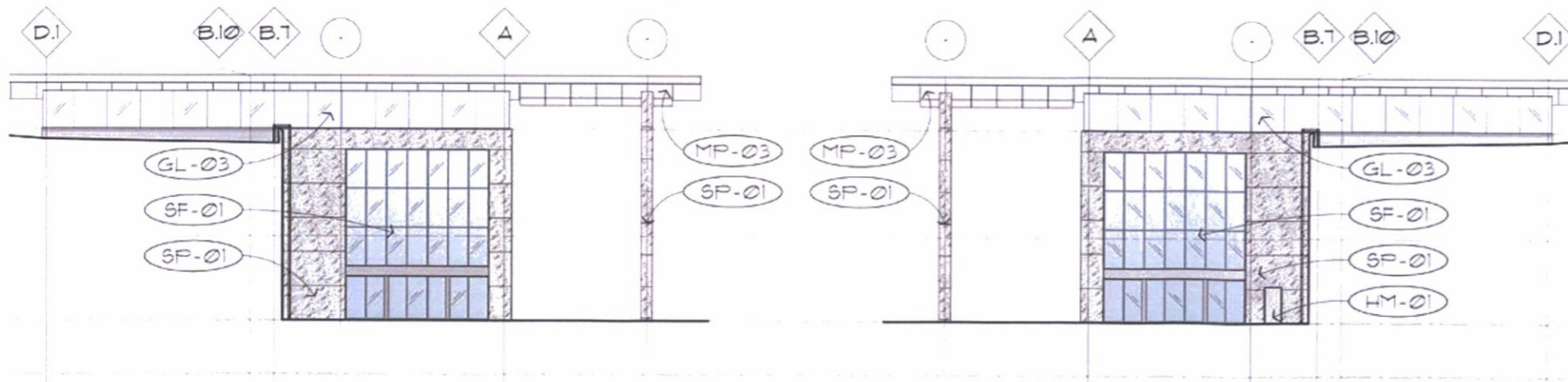
PARTIAL NORTH ELEVATION

SCOTTSDALE

Fashion Square



PARTIAL NORTH ELEVATION



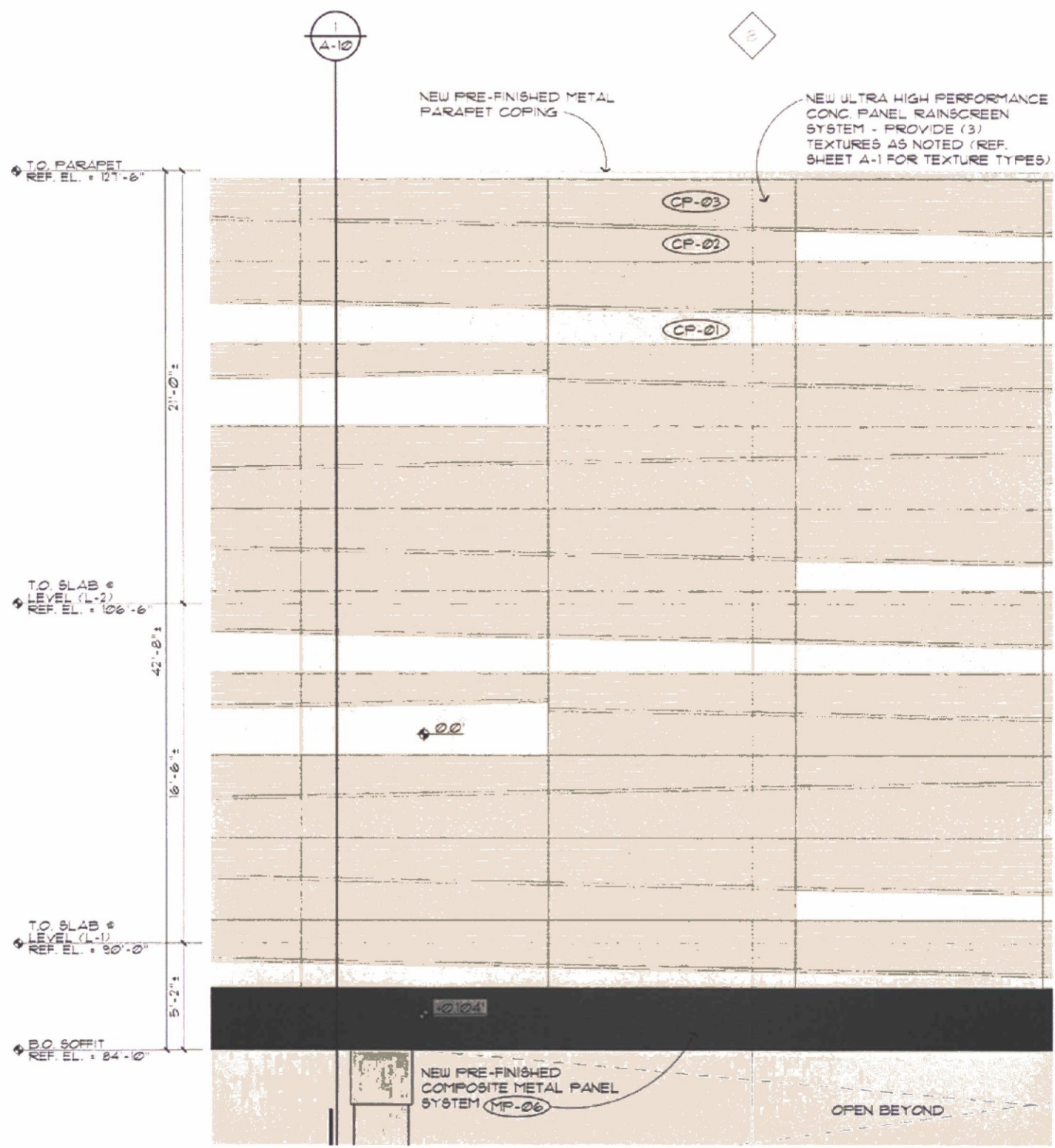
PARTIAL EAST ELEVATION

PARTIAL WEST ELEVATION

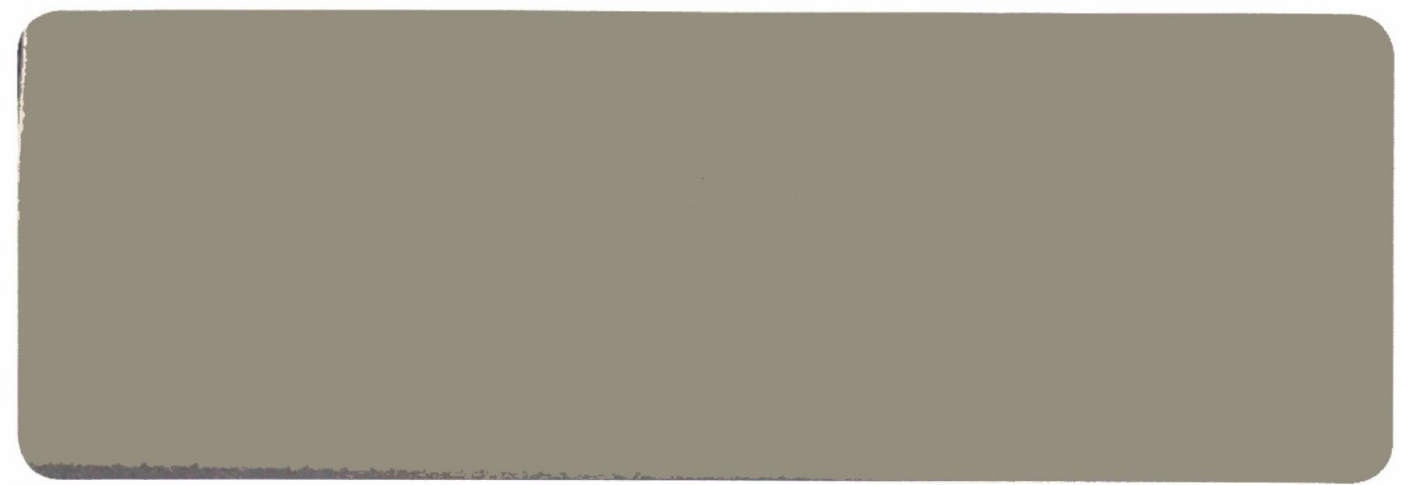


GL-02 & GL-03

INSULATED GLASS UNITS



PARTIAL NORTH ELEVATION @ BRIDGE



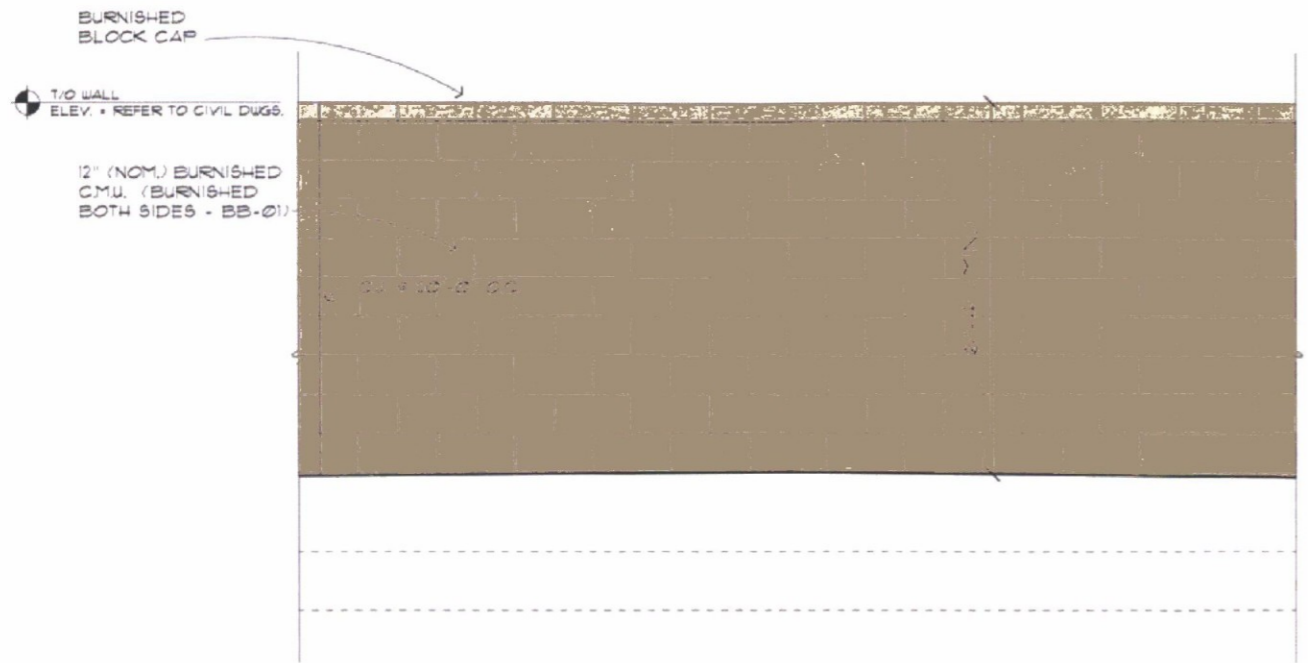
CP-01
U.H.P. CONCRETE PANEL - TEXTURE: SMOOTH / COLOR: BONE



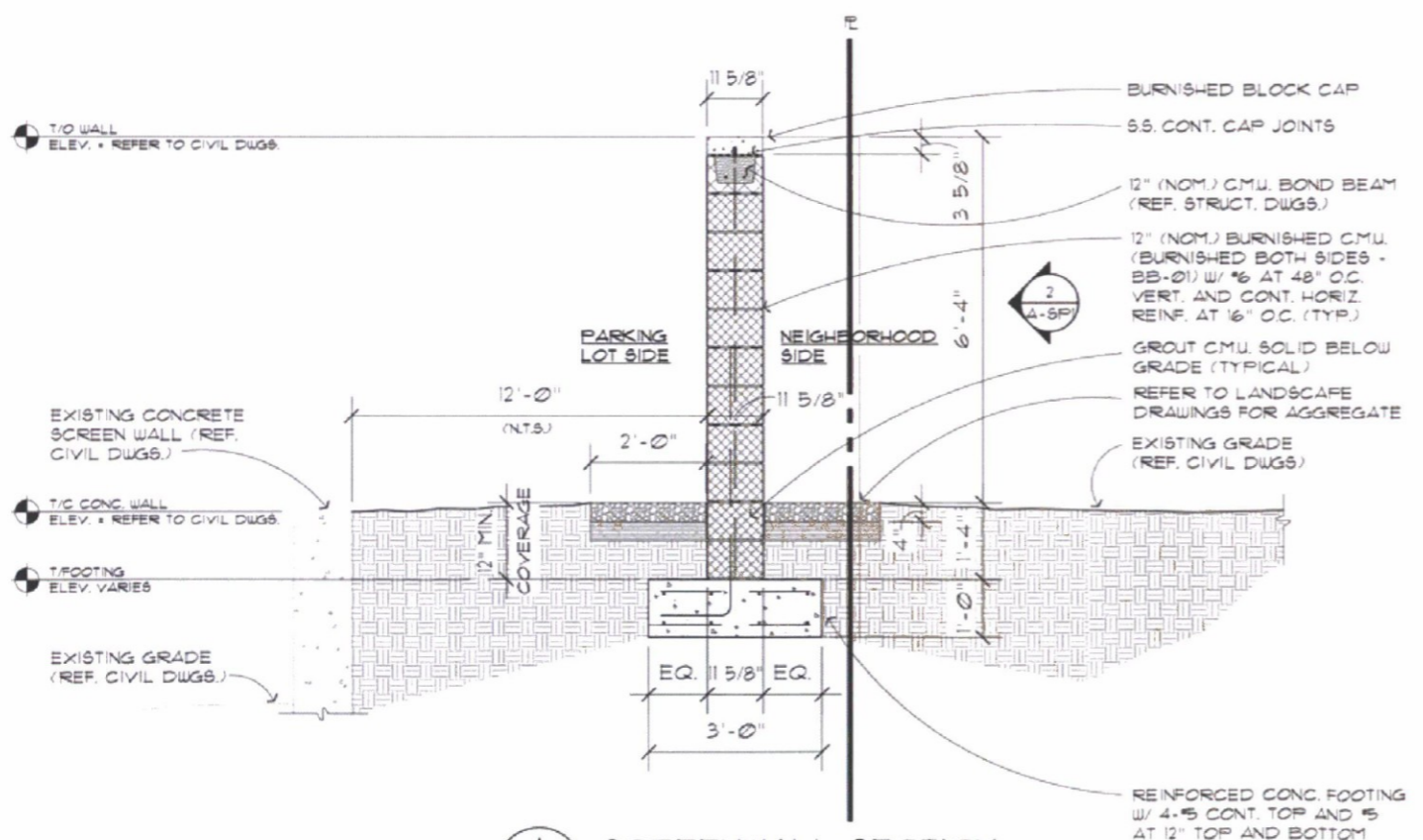
CP-02
U.H.P. CONCRETE PANEL - TEXTURE: ROUGH 03 / COLOR: BONE



CP-03
U.H.P. CONCRETE PANEL - TEXTURE: ARBOS 02 / COLOR: BONE



2 PARTIAL SCREENWALL ELEVATION
A-SPI SCALE: 1/2" = 1'-0"



1 SCREENWALL SECTION
A-SPI SCALE: 1/2" = 1'-0"

BB-01 BURNISHED CEMENT BLOCK - COLOR: "THS"

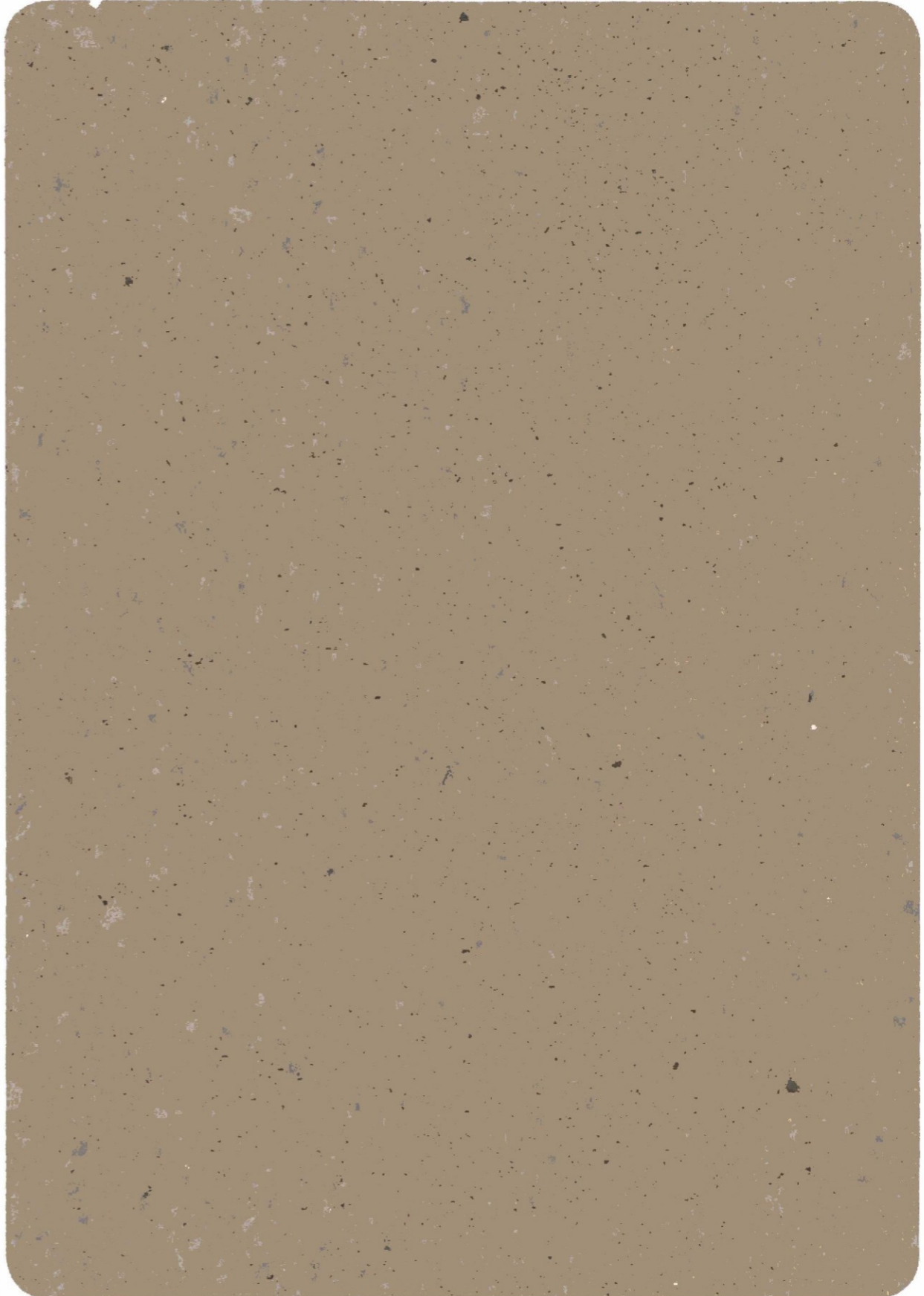
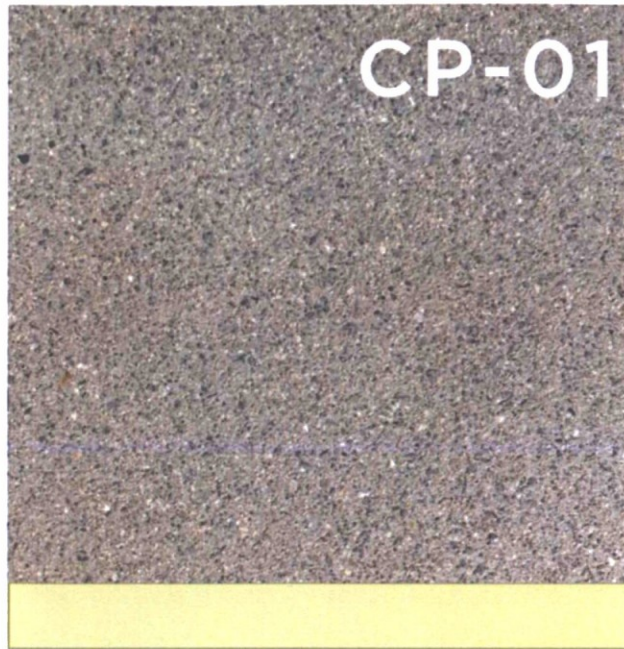
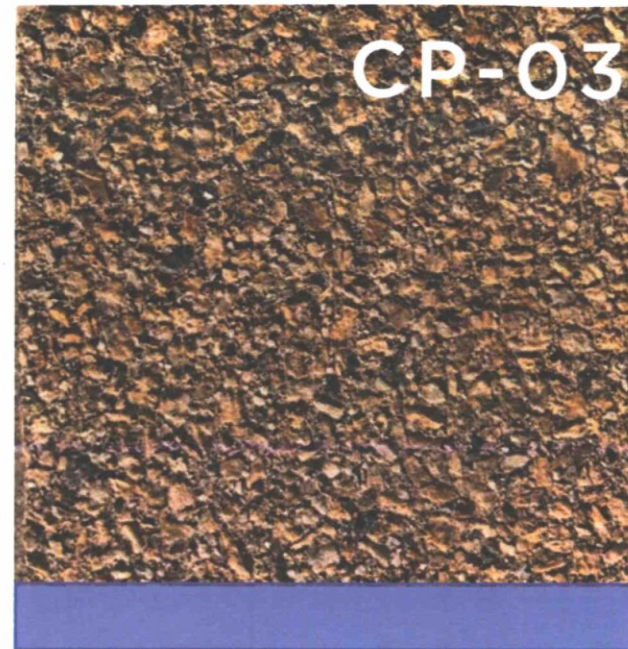


EXHIBIT A



Pour in Place Concrete - Pedestrian
 Natural Grey Concrete with Medium Retardent Finish



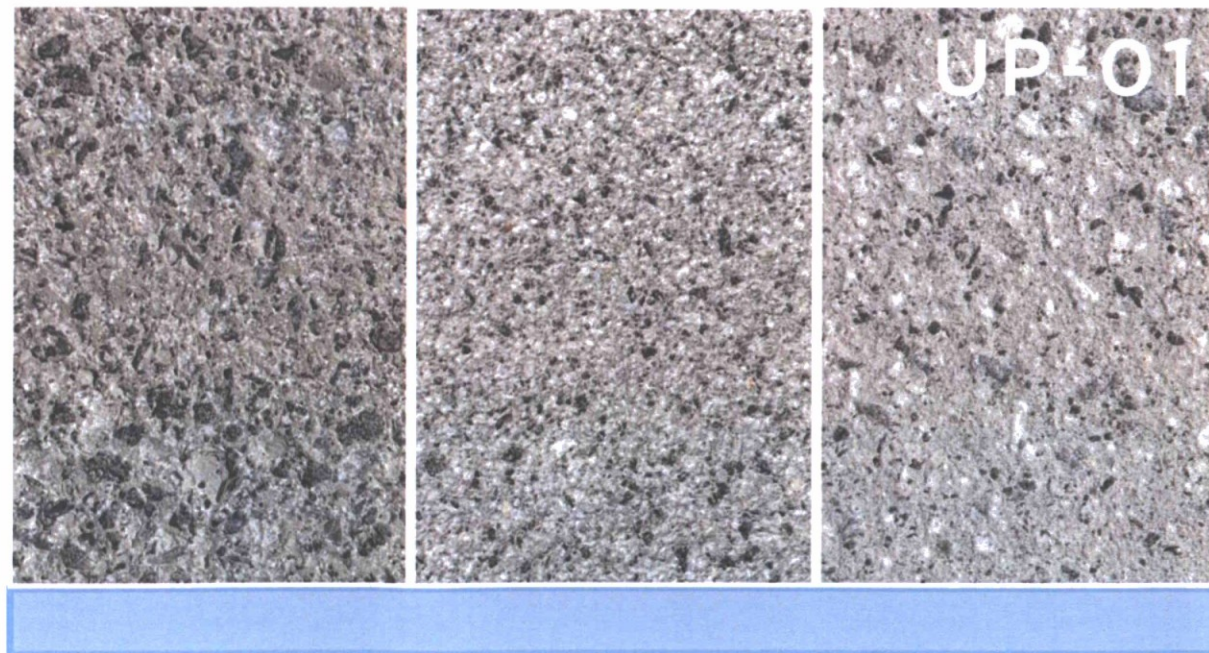
Pour in Place Concrete - Pedestrian
 Integral Colored Concrete with Seeded Aggregate



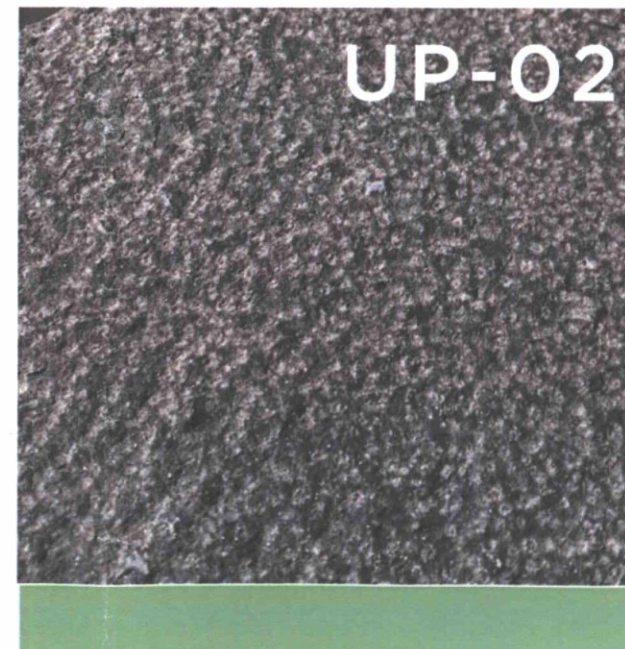
Stablized Decomposed Granite



Decorative Aggregate
 Angular Basalt Gravel



Concrete Pavers - Pedestrian
 Mix of 3 Concrete Paver Type's

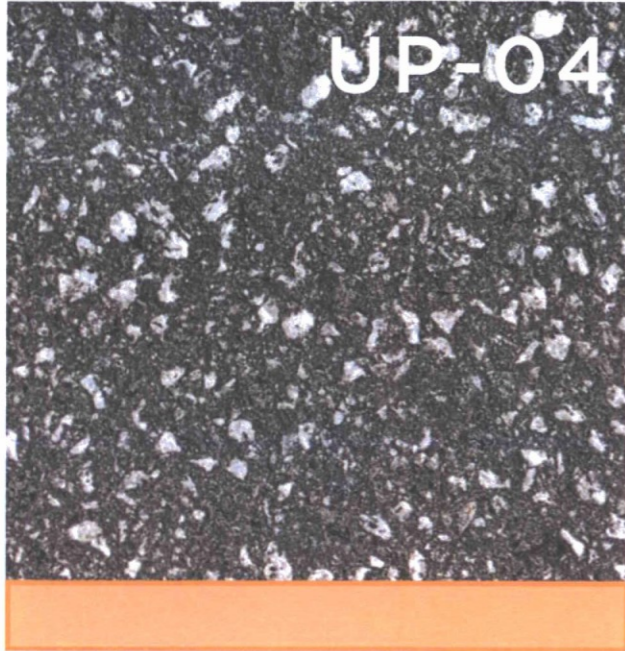


8"x8" Stone Paving - Pedestrian + Vehicular
 Match or Equal to selected Interior Stone



Concrete Pavers - Pedestrian + Vehicular
 Dark Grey Concrete Base with 60-70% Aggregate

EXHIBIT A



Concrete Pavers - Vehicular 12"x6"

Dark Grey Concrete Base with 60-70% Aggregate



Concrete Pavers - Vehicular

Natural Grey Concrete with Large Aggregate White & Grey Aggregate Mix



12"x12" Truncated Dome

White Concrete Pavers with Aggregate Mix

EXHIBIT A

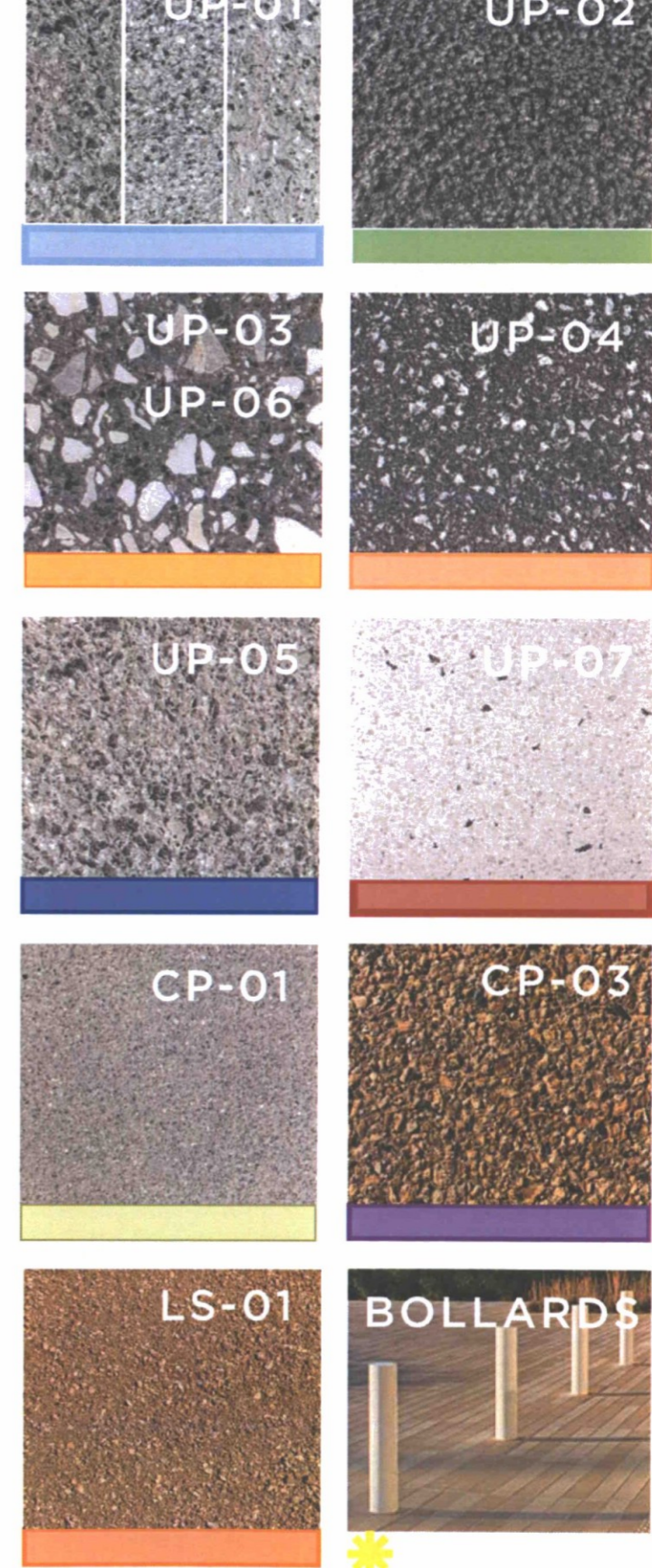
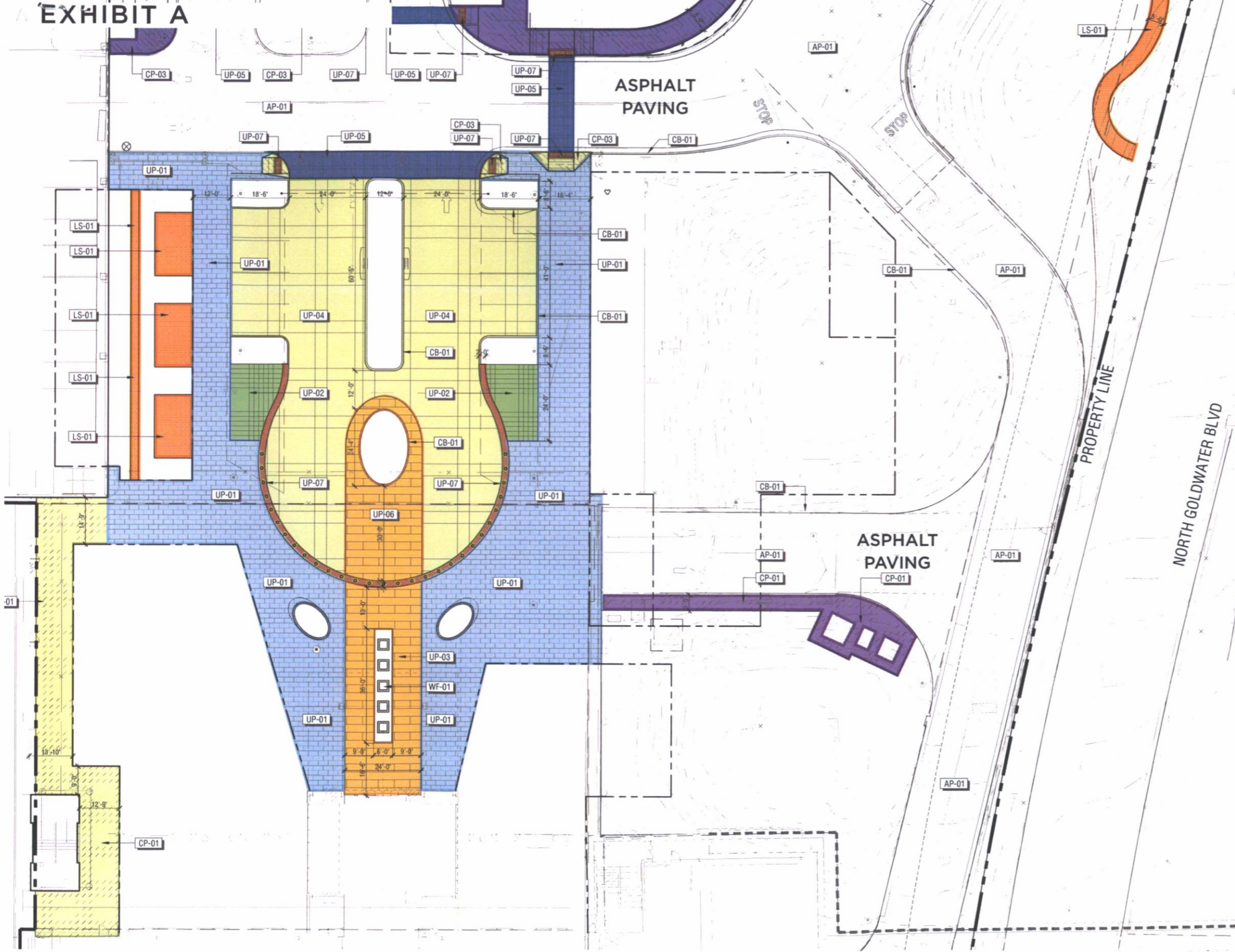


EXHIBIT A

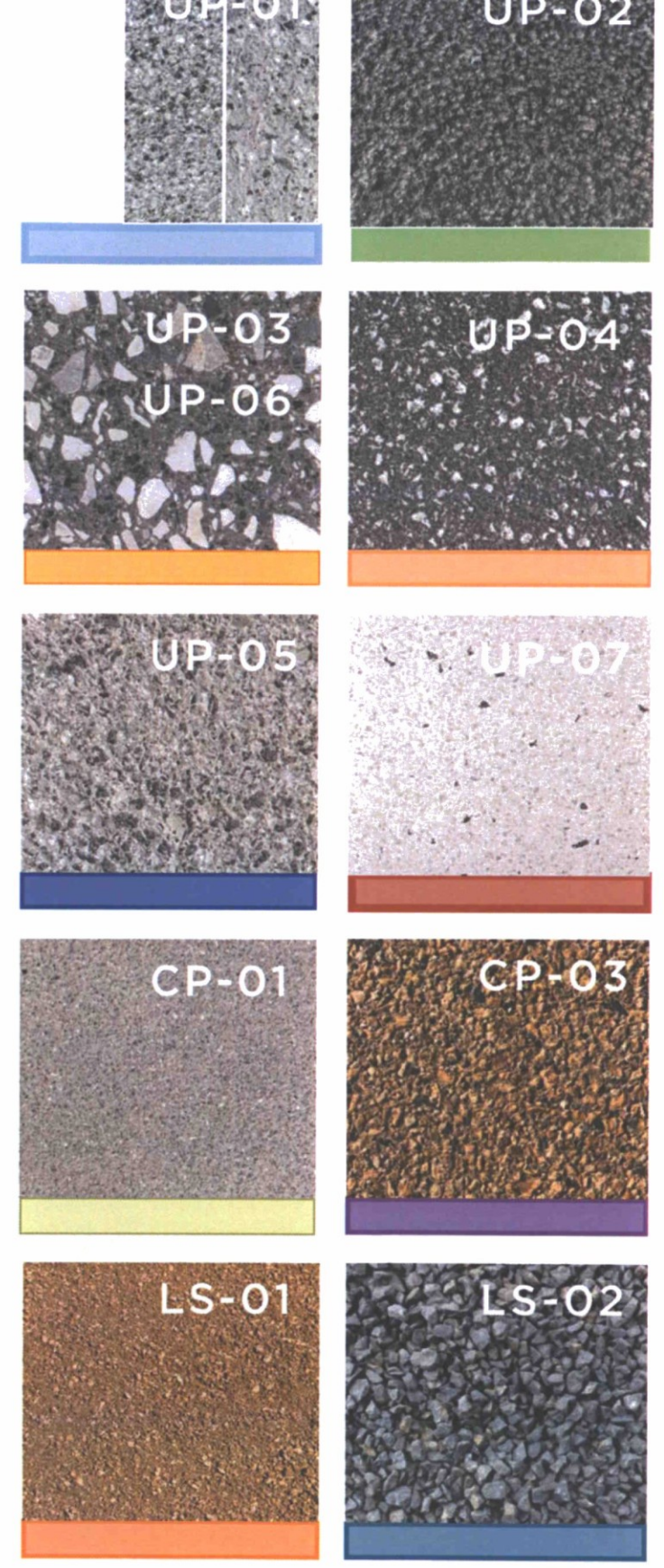
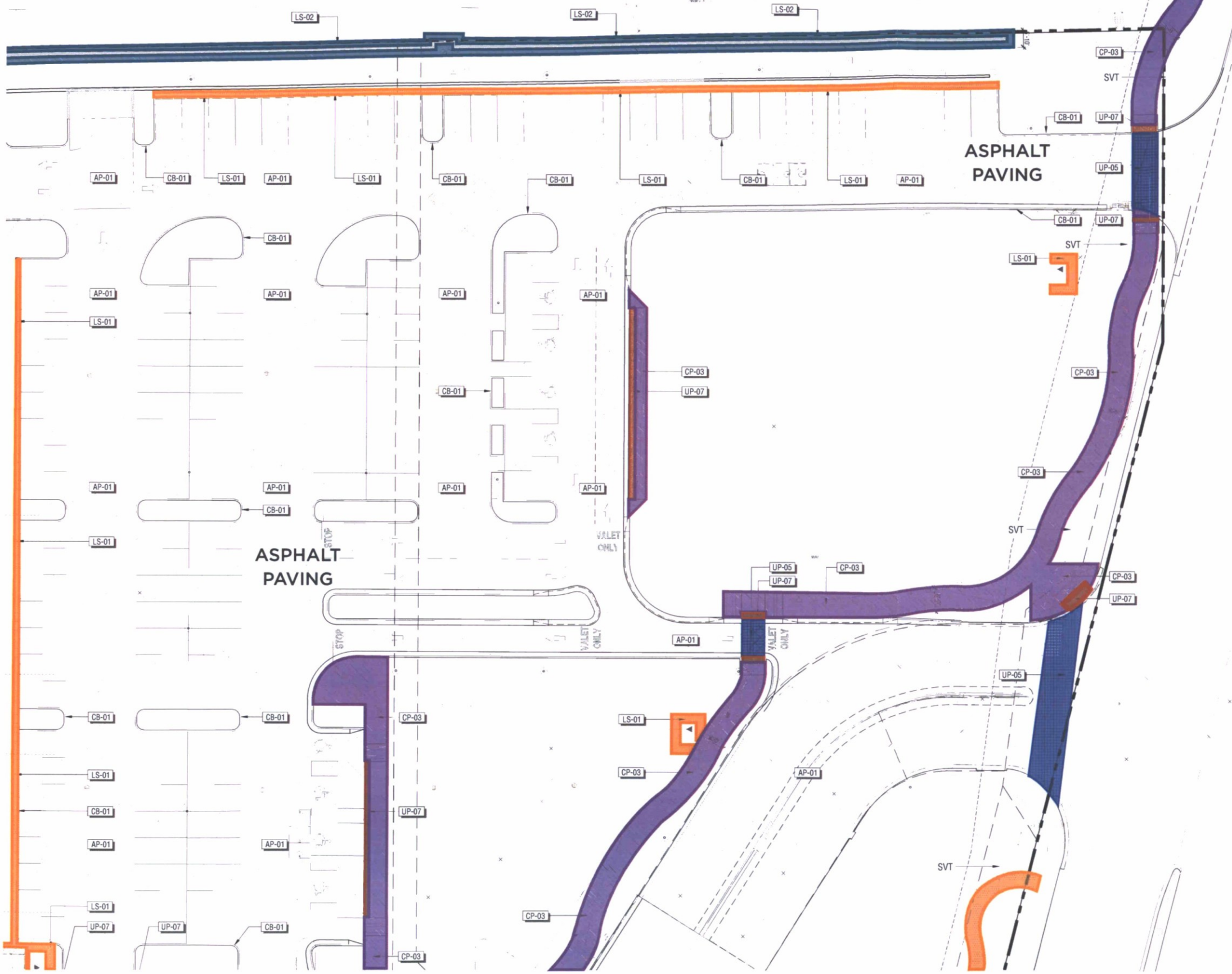
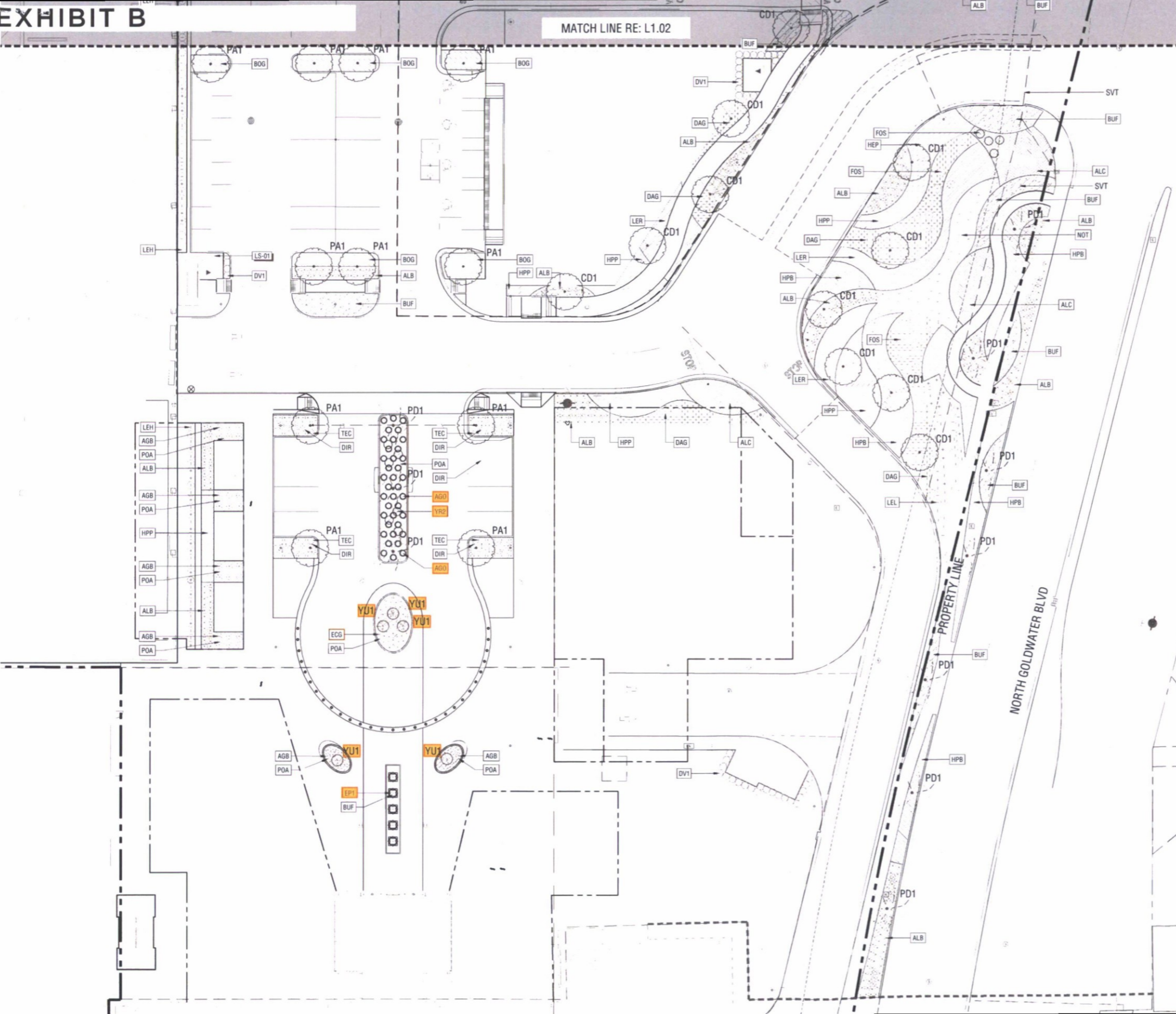


EXHIBIT B

MATCH LINE RE: L1.02

Sheet Set: SC-FSM-DRB Submittal Layout: L1.01 Version: August 17, 2017 11:04:04am Storec: T:\Projects\SC-FSM-Scottsdale Fashion Square\SC-FSM-SHEETS\DRB Submittal\Phase 1\SC-FSM-L6-PLANTING PLANS-DRB.dwg



PLANT SCHEDULE

TREES	CODE	QTY	BOTANICAL NAME / COMMON NAME	CONTAINER
	CD1	13	CERCIDIA HYBRID / DESERT MUSEUM / DESERT MUSEUM PALO VERDE	48" BOX
	DV1	257	DODONAEA VISCOSA / HOPSEED BUSH	15 GAL
	EP1	5	ECHINOPSIS PACHANOI / SAN PEDRO CACTUS	24" BOX
	PA1	28	PROSOPIA ALBA / SOUTH AMERICAN MESQUITE	48" BOX
	PD1	17	PHOENIX DACTYLIFERA / DATE PALM	30" BTH
	YR1	5	YUCCA ROSTRATA / BEAKED YUCCA	36" BOX
	YR2	10	YUCCA ROSTRATA / BEAKED YUCCA	24" BOX
SHRUBS	CODE	QTY	BOTANICAL NAME / COMMON NAME	CONTAINER
	AGB	46	AGAVE 'BLUE FLAME' / BLUE FLAME AGAVE	5 GAL
	AGO	38	AGAVE OVATIFOLIA / WHALE'S TONGUE AGAVE	-
	DIR	116	DIANELLA REVOLUTA 'LITTLE REV' / LITTLE REV FLAX LILY	5 GAL
	EGG	52	ECHINOCACTUS GRISONII / GOLDEN BARREL CACTUS	5 GAL
	FOS	31	FOUQUIERIA SPLENDENS / OCOTILLO	10 GAL
	LEH	120	LEUCOPHYLLUM X 'HEAVENLY CLOUD' / BAROMETERBUSH	5 GAL
	LEL	258	LEUCOPHYLLUM LANGMANIAE 'RIO BRAVO' TM / BAROMETERBUSH	5 GAL
	TEC	96	TEUCRIUM CHAMAEDRYS 'PROSTRATUM' / PROSTRATE GERMANDER	5 GAL
VINE/ESPALIER	CODE	QTY	BOTANICAL NAME / COMMON NAME	CONTAINER
	FIP	204	FICUS PUMILA / CREEPING FIG	1 GAL
SHRUB AREAS	CODE	QTY	BOTANICAL NAME / COMMON NAME	CONTAINER
	ALB	714	ALOE X 'BLUE ELF' / ALOE	5 GAL
	ALC	334	ALOE CAMPERI / ALOE	5 GAL
	BOG	657	BOUTELOUA GRACILIS 'BLONDE AMBITION' / BLUE GRAMA	5 GAL
	BUF	841	BULBINE FRUTESCENS 'YELLOW' / STALKED BULBINE	5 GAL
	HPB	329	HESPERALOE PARVIFLORA 'BRAKELIGHTS' TM / BRAKELIGHTS RED YUCCA	5 GAL
	HPP	344	HESPERALOE PARVIFLORA 'PINK PARADE' / PINK PARADE HESPERALOE	5 GAL
	LER	294	LEUCOPHYLLUM LANGMANIAE 'RIO BRAVO' TM / BAROMETERBUSH	5 GAL
GROUND COVERS	CODE	QTY	BOTANICAL NAME / COMMON NAME	CONTAINER
	DAG	313	DALEA GREGGII / TRAILING INDIGO BUSH	5 GAL
	NOT	280	NOLINA TEXANA / TEXAS SACAHUISTA	3 GAL
	POA	283	PORTULACARIA AFRA 'PROSTRATA' / ELEPHANT BUSH	5 GAL

LANDSCAPE AREA SUMMARY:

- ON-SITE: 19,507 SQ. FT.
- RIGHT-OF-WAY: 7,351 SQ. FT.
- PARKING LOT: 12,913 SQ. FT.

39300 W. Twelve Mile Rd., Suite 180
Farmington Hills, MI 48331
p 248 737 0180
www.jprra.com

CONSULTANT:

550 Lomas Santa Fe Drive, Suite A
Solana Beach, CA 92075

ISSUED FOR:

SUBJECT:

LANDSCAPE PLAN

SEAL:

DEVELOPER:

PROJECT:

SCOTTSDALE
Fashion Square
LUX WING MALL RENOVATION