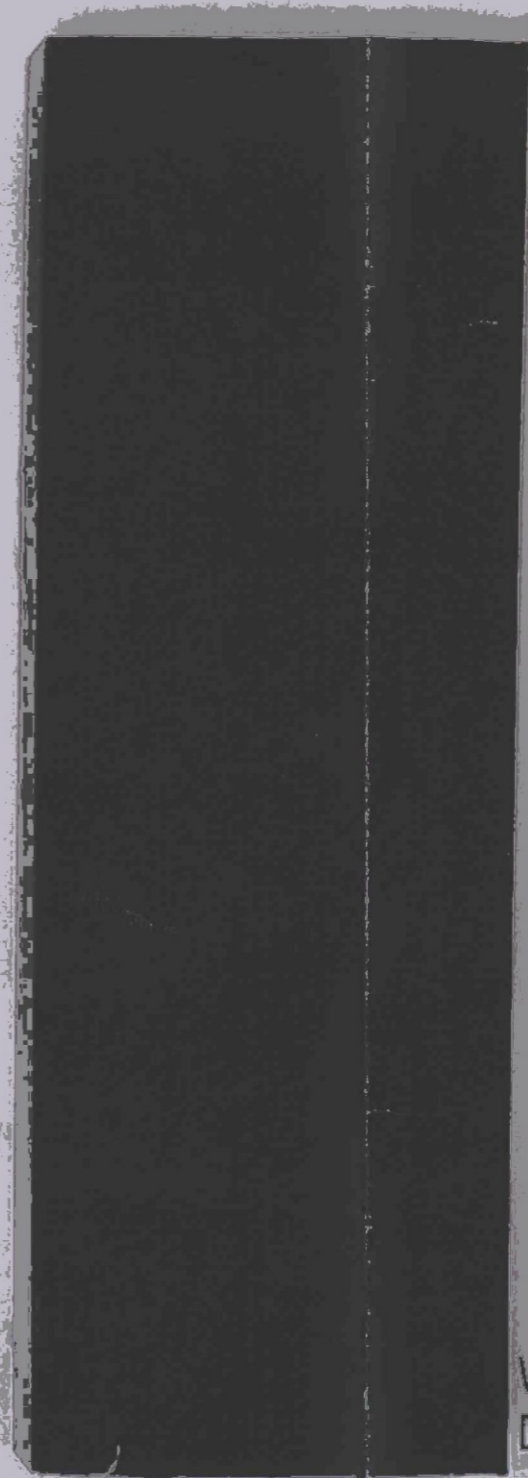


Exterior Building Color & Material Samples
Color Drawdowns
Archaeological Resources
Airport Vicinity Development Checklist
Parking Study
Trip Generation Comparison
Parking Master Plan



Data based on NFRC methodology using LBNL's Window 5.2 software. CEN EN-410/673 data based on CEN methodology using WIS3.01 software. 1" (24.7mm) insulating glass unit with two pieces of 1/4" (6mm) glass and a 1/2" (12.7mm) airspace. See literature or visit www.ppgideascape.com for additional values. This sample is for glass aesthetic only, the spacer used is not representative of commercial units.

SOLARBAN 60
STARPHIRE
REFLECTIVITY VALUE 11%



WINDOW FRAMES
DARK BRONZE

DISTRICT AT THE QUARTER

KAPLAN ACQUISITIONS, LLC

BUILDING COLOR AND MATERIALS

43-DR-2016

01/16/16

9-15-16



306 STO MEDIUM SAND
SW7642 PAVERSTONE

form
architecture

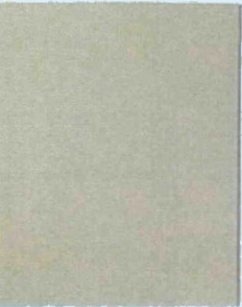
DISTRICT AT THE QUARTER

KAPLAN ACQUISITIONS, LLC

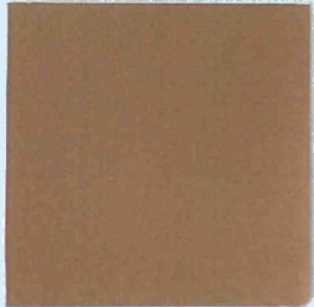
BUILDING COLOR AND MATERIALS

7-10-10

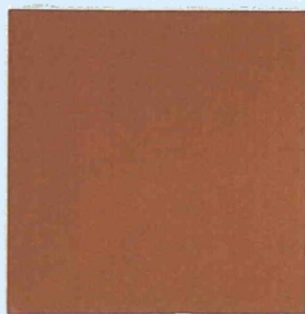
FINE GRAIN
DUNN EDWARDS - DE6213
BODY COLOR 1



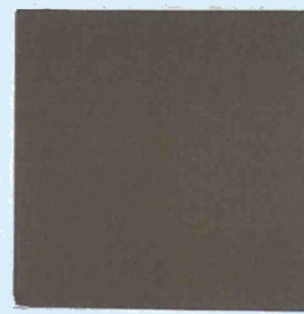
CAMELIZED
DUNN EDWARDS - DET687
BODY COLOR 2



HAPPY TRAILS
DUNN EDWARDS - DET444
BODY COLOR 3



PALOMINO PONY
DUNN EDWARDS - DET621
ACCENT COLOR



CELLULOID
DUNN EDWARDS - DET619
CORNICE/FRY REGLET/
RAILING/DOOR/CANOPY



BRONZE
WINDOW/STOREFRONT FRAMES



CELLULOID
CAMELIZED
HAPPY TRAILS
BRONZE
FINE GRAIN
SAHARA BEIGE
PALOMINO PONY



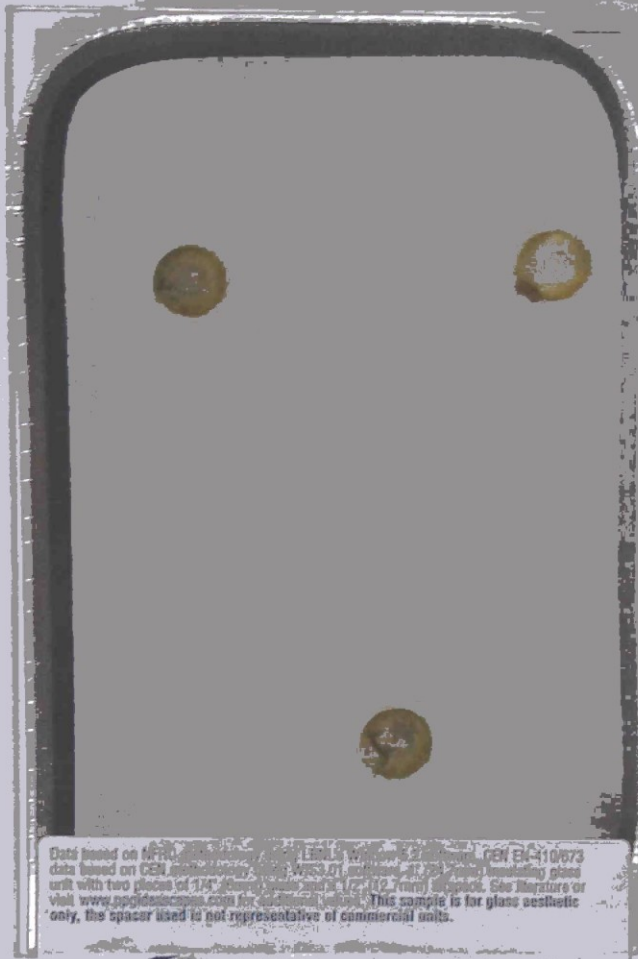
HAPPY TRAILS
CAMELIZED
FINE GRAIN
CELLULOID
FINE GRAIN
FINE GRAIN
HAPPY TRAILS
FINE GRAIN
SAHARA BEIGE
BRONZE

billform
architecture

DISTRICT AT THE QUARTER

KAPLAN ACQUISITIONS, LLC

BUILDING COLOR AND MATERIALS



Data based on AIAA... LEEDS... GEN EN-410673
 data based on GEN... STARPHIRE...
 unit with two pieces of 1/4" glass...
 visit www.spacemaster.com for...
 only, the spacer listed is not representative of commercial units.

SOLARBAN 60
 STARPHIRE
 REFLECTIVITY VALUE 11%



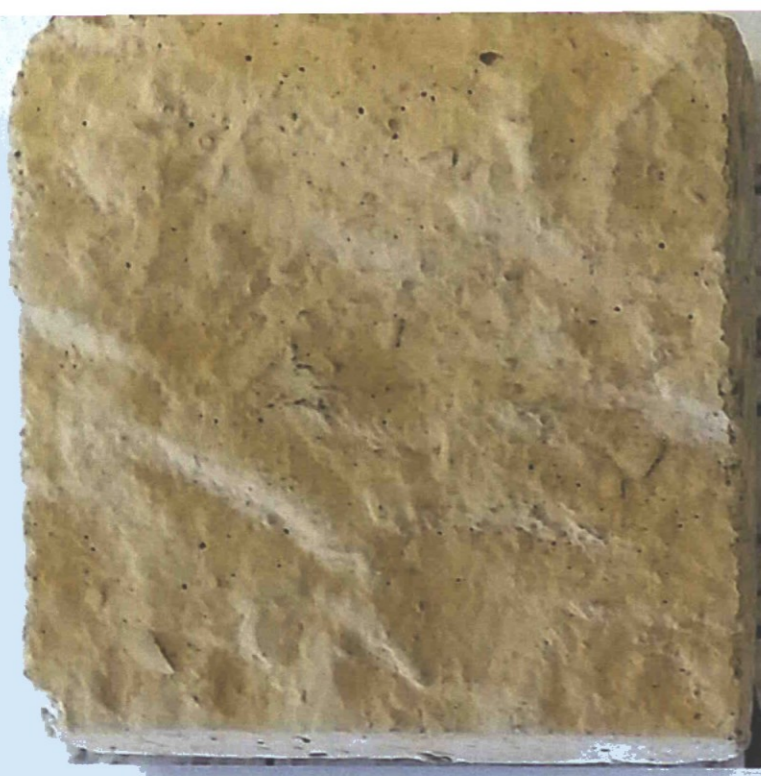
WINDOW FRAMES
 DARK BRONZE

DISTRICT AT THE QUARTER
 KAPLAN ACQUISITIONS, LLC

BUILDING COLOR AND MATERIALS



306 STO MEDIUM SAND
SW7642 PAVERSTONE



SAHARA BEIGE
8" CLASSIC JERUSALEM
CORONADO STONE



CORONADO 8" CLASSIC JERUSALEM
STONE PRODUCTS SAHARA BEIGE



CELLULOID

CAMELIZED

HAPPY TRAILS

BRONZE

FINE GRAIN

SAHARA BEIGE

PALOMINO PONY

HAPPY TRAILS

CAMELIZED

FINE GRAIN

CELLULOID

FINE GRAIN

FINE GRAIN

HAPPY TRAILS

FINE GRAIN

SAHARA BEIGE

BRONZE

DISTRICT AT THE QUARTER

KAPLAN ACQUISITIONS LLC

BUILDING COLOR AND MATERIALS

9-15-16



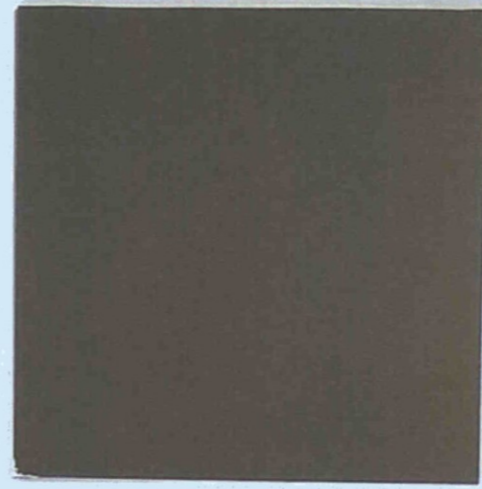
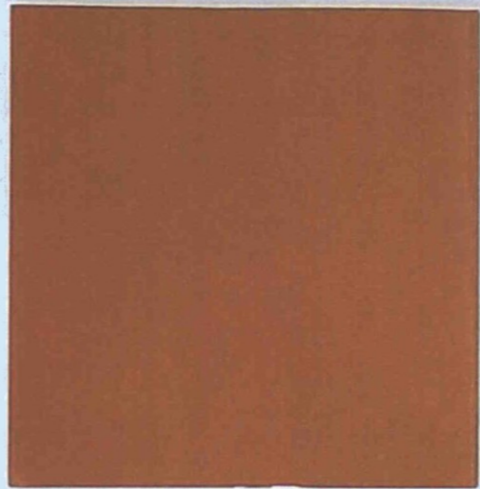
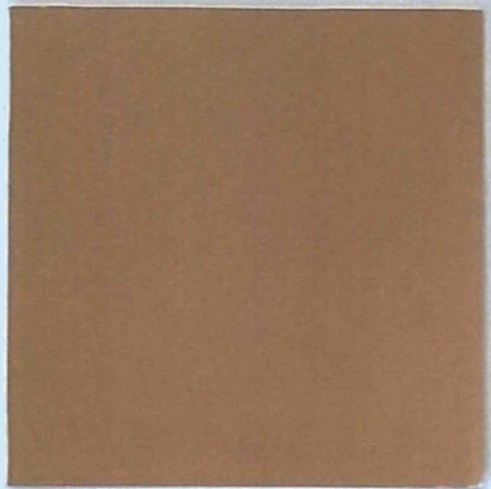
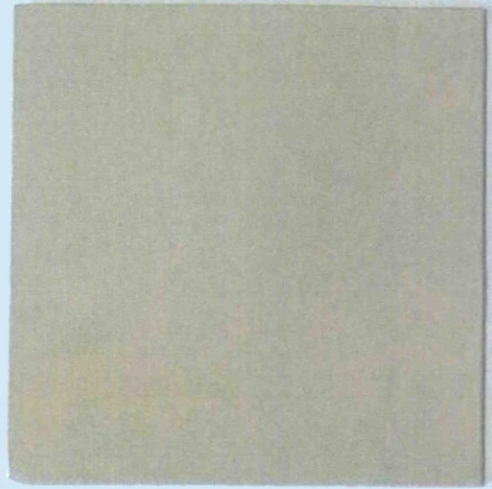
FINE GRAIN
DUNN EDWARDS - DE6213
BODY COLOR 1

CAMELIZED
DUNN EDWARDS - DET687
BODY COLOR 2

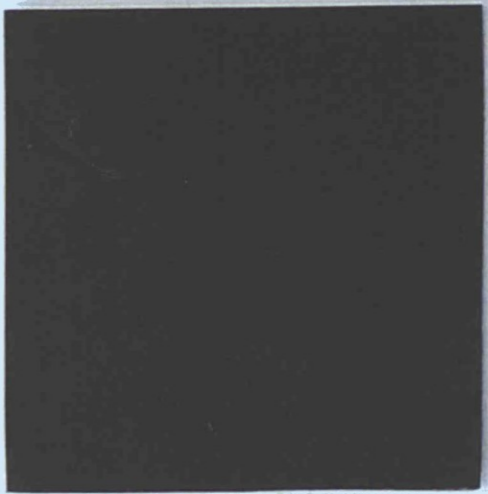
HAPPY TRAILS
DUNN EDWARDS - DET444
BODY COLOR 3

PALOMINO PONY
DUNN EDWARDS - DET621
ACCENT COLOR

CELLULOID
DUNN EDWARDS - DET619
CORNICE/FRY REGLET/
RAILING/DOOR/CANOPY



BRONZE
WINDOW/STOREFRONT FRAMES



DISTRICT AT THE QUARTER

BUILDING COLOR AND MATERIALS

IP65 : Suitable for Wet Locations
IK08 : Impact Resistant (Vandal Resistant)

UVA-20001 Vancouver Square light column LED

A stylish square light column with downward light distribution using LED lamps. This light column offers optimal visual comfort through glare control by utilizing a controlled optics designed by Ligman. These columns have a square design providing a unique wide light distribution, offering an architecturally appealing clover leaf pattern on the paving. The internal sides of the supporting pillars are accented by light from the LED.

The minimalistic shape provides distinctive lighting effects by night and decorative urban effect during the day. Suitable for pedestrian areas, precincts, building surrounds, shopping centers, squares and parks.

Extruded aluminum column and low copper content die cast housing with high corrosion resistance. Stainless steel screws. Durable high temperature silicone rubber gasket and clear tempered glass with anodized high purity aluminum reflector. Housing is treated with twin nickel and zinc phosphate protection before powder coating (4.7 mil thickness), ensuring high corrosion resistance. Provided with integral drivers and anchor bolts (the root mount kit is an option and is an adder)

Designed to complement the Vancouver bollard.

Physical Data

Length: 9.4"

Height: Specify

Weight: 121 lb

Lamp

41w - 2775lm - White - LED

LED Color (Please Specify)

W27 - 2700K

W30 - 3000K

W40 - 4000K

Voltage (Please Specify)

120-277v

Other _____

Options (Please Specify)

Color (Please Specify)

01-Black - RAL 9011

03-White - RAL 9003

05-Matt Silver - RAL 9006

06-Bronze - RAL 6014

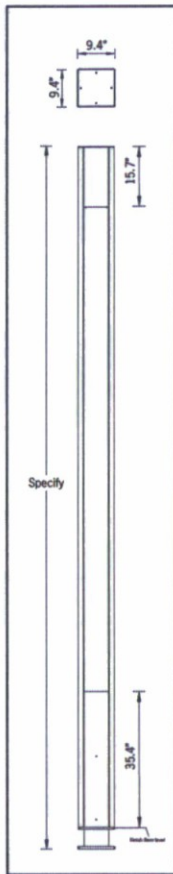
02- Dark Grey - RAL 7043

04 - Metallic Silver - RAL 9006

07- Custom - RAL _____



43-DR-2016
10/31/2016



Pre-ship anchor bolts and template

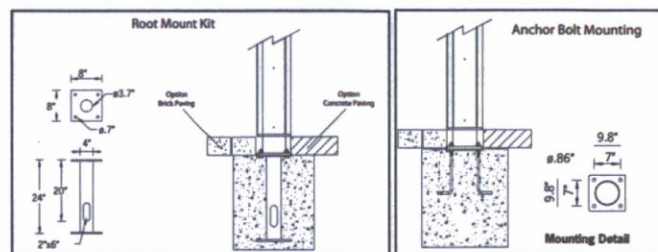
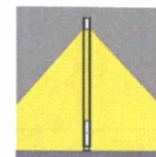
F- Frosted Lens

C- Clear Lens

HGT - Specify Custom Height _____

GFCI - GFCI Receptacle - Specify Position _____

RMK - Galvanized Root Mount Kit Adder (A20491)



Ordering Example : UVA - 20001 - 41w - W30 - 120-277v - Options

PROJECT: _____

DATE: _____



FEATURES & SPECIFICATIONS

INTENDED USE — Our recessed LED module is the most economical means to create a well lit environment with exceptional energy efficiency and near zero maintenance. Great for retrofit into existing downlight cans or new construction and remodel applications. Unique torsion spring and friction clip retention allows fitment into nearly 100% of installed cans. The LED module maintains at least 70% light output for 50,000 hours.

CONSTRUCTION — Aluminum die cast reflector with deep baffle configuration for reduced glare. Combined LED and driver printed circuit board attached. Inner reflector cone funnels light through the pressed-in diffused lens.

Baffle and open trim inserts are available in multiple finishes.

OPTICS — Diffused lens at end of mixing chamber to provide even light distribution for general illumination, equivalent to 65W BR30 or 100W BR30 lamp.

Wide flood beam angle at >45°.

ELECTRICAL — Center 2 Edge™ (patent pending) technology created for a single point source. Primary power disconnect provided for simple connection to a dedicated LED connector in the housing.

Dimming down to 10%. For compatible dimmers, refer to [Compatible Dimmers Chart](#).

725-lumen P series has an input wattage of 12.7 watts, 57 lumens per watt, equivalent to 65-watt incandescent.

P Series' patent pending driver has zero inrush, which allows power loads to be calculated with actual rated wattages.

Example: 47 units of 6BPMW LED fixtures can be installed in line with a 600-watt dimmer. 600W/12.7W = 47 fixtures.

950-lumen P series has an input wattage of 15.2 watts, 63 lumens per watt, equivalent to 100-watt incandescent.

INSTALLATION — Suitable for installation in standard and shallow-height rough-in sections.

E26 socket adaptor and splice kit ships standard. This enables easy installation or permanent conversion to an LED source for Title 24 compliance.

Twin torsion springs ensure easy installation.

Friction clips included to allow fitment into cans without torsion brackets from an inside diameter of 6.0" to 7.0".

LISTINGS — CSA certified to US and Canadian safety standards. California T24 compliant. Wet location listed for indoor use only. WSEC ASTM E283 for Air-Tight (with IC housings).

WARRANTY — 5-year limited warranty. Complete warranty terms located at

www.acuitybrands.com/CustomerResources/Terms_and_conditions.aspx

Note: Actual performance may differ as a result of end-user environment and application.

All values are design or typical values, measured under laboratory conditions at 25°C.

Specifications subject to change without notice.

PATENTS PENDING.

Catalog Number
Notes
Type

LED Recessed Downlighting

6BP/60P

6" LED Module
IC/Non-IC
Retrofit



Torsion mount shown



Friction clip shown
(included)

Specifications

Aperture: 5-7/8 (14.9)

Ceiling opening: Determined by rough-in
Overlap trim: 7-5/8 (19.4)

Height: 3-7/8 (9.8)

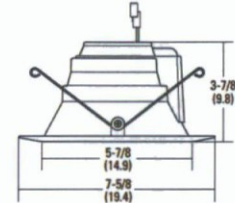
All dimensions are inches (centimeters) unless otherwise indicated.



E26 adaptor
(included)



Splice kit
(included)



ORDERING INFORMATION

Lead times will vary depending on options selected. Consult with your sales representative.

Example: 6BP TRMW LED 27K 90CRI

Series/Finish	Lamp	CCT / CRI / W / Lumens ¹	Voltage	Options
6BPMW	6" Baffle LED module, matte white	LED (blank) 3000 K / 83 CRI / 12.7W / 725L	(blank) 120V	L7XLED T24 New construction rough-in LED base
6BP TRMW	6" Baffle LED module, black baffle, matte white flange	LED 27K 90CRI 2700 K / 93 CRI / 10.25W / 600L		L7XRLED T24 Remodel rough-in LED base
6BPBN	6" Baffle LED module, brushed nickel	LED 30K 90CRI 3000 K / 93 CRI / 10.25W / 600L		LC6LED T24 New construction rough-in LED base
6BPORB	6" Baffle LED module, oil-rubbed bronze	LED 40K 90CRI 4000K / 92CRI / 9.9W / 650L		L7X New construction rough-in ²
	HL LED	(blank) 3000 K / 83 CRI / 15.2W / 950L		L7XR Remodel rough-in ²
		27K 90CRI 2700 K / 93 CRI / 16.7W / 860L		L7XP New construction shallow rough-in ²
		30K 90CRI 3000 K / 93 CRI / 16.7W / 860L		L7XPR Remodel shallow rough-in ²
		40K 90CRI 4000K / 92CRI / 16.4W / 950L		LC6 New construction rough-in ²
				LCP New construction shallow rough-in ²
60PA	6" Open LED module, clear diffuse	LED (blank) 3000 K / 83 CRI / 12.7W / 725L	(blank) 120V	L7XLED T24 New construction rough-in LED base
60PAZ	6" Open LED module, clear specular	LED 27K 90CRI 2700 K / 93 CRI / 10.25W / 600L		L7XRLED T24 Remodel rough-in LED base
60PA TRMW	6" Open LED module, clear diffuse, matte white flange	LED 30K 90CRI 3000 K / 93 CRI / 10.25W / 600L		LC6LED T24 New construction rough-in LED base
60PAZ TRMW	6" Open LED module, clear specular, matte white flange	LED 40K 90CRI 4000K / 92CRI / 9.9W / 650L		L7X New construction rough-in ²
	HL LED	(blank) 3000 K / 83 CRI / 15.2W / 950L		L7XR Remodel rough-in ²
		27K 90CRI 2700 K / 93 CRI / 16.7W / 860L		L7XP New construction shallow rough-in ²
		30K 90CRI 3000 K / 93 CRI / 16.7W / 860L		L7XPR Remodel shallow rough-in ²
		40K 90CRI 4000K / 92CRI / 16.4W / 950L		LC6 New construction rough-in ²
				LCP New construction shallow rough-in ²

Accessories: Order as separate catalog number.

TSA6	Makes non-bracket housing compatible with the LED module; ships as units, J6 or J25
FL2LED	Makes L7XF housings compatible with the LED module

Notes

- Total system delivered lumens.
- Must be ordered on a separate line.

See page 2 for Trim Inserts.

TRIM INSERTS

TRIM INSERTS (for field configuration; ordered separately)

Example: 6BP TRMW R12

Series/Finish				Packaging
6BP TRMW	6" Baffle black, matte white flange insert	60PAZ	6" Open clear specular insert	R12 Retail pack of 12 units
6BPBN	6" Baffle brush nickel insert	60PATRMW	6" Open clear diffuse, matte white flange insert	U Unit
6BPORB	6" Baffle oil-rubbed bronze insert	60PAZTRMW	6" Open clear specular, matte white flange insert	
60PA	6" Open clear diffuse insert			



Black Baffle with Matte White Trim Ring (TRMW)



Brushed Nickel Baffle (BN)



Oil-rubbed Bronze Baffle (ORB)



Clear Diffuse with Matte White Trim Ring (ATRMW)



Clear Diffuse (A)



Clear Specular with Matte White Trim Ring (AZTRMW)



Clear Specular (AZ)

ADDITIONAL DATA

ENERGY DATA* - 3000K Standard Lumens		
	CRI - 83	CRI - 93
Lumens	725	600
Min. starting temp	-18°C (0°F)	-18°C (0°F)
Max. temp	46°C (115°F)	46°C (115°F)
EMI/RFI	FCC Title 47 CFR, Part 15, Class B	FCC Title 47 CFR, Part 15, Class B
Sound rating	A standards	A standards
Input voltage	120V	120V
Min. power factor	0.97	0.97
Input frequency	50/60 Hz	50/60 Hz
Rated wattage	12.7W	10.5W
Input power	12.7W	10.5W
Input current	.11A	.09A

*Values at non-dimming line voltage.

ENERGY DATA* - 3000K Hi Lumens		
	CRI - 83	CRI - 93
Lumens	950	860
Min. starting temp	-18°C (0°F)	-18°C (0°F)
Max. temp	46°C (115°F)	46°C (115°F)
EMI/RFI	FCC Title 47 CFR, Part 15, Class B	FCC Title 47 CFR, Part 15, Class B
Sound rating	A standards	A standards
Input voltage	120V	120V
Min. power factor	0.97	0.97
Input frequency	50/60 Hz	50/60 Hz
Rated wattage	15.2W	16.7W
Input power	15.2W	16.7W
Input current	.13A	.14A

*Values at non-dimming line voltage.

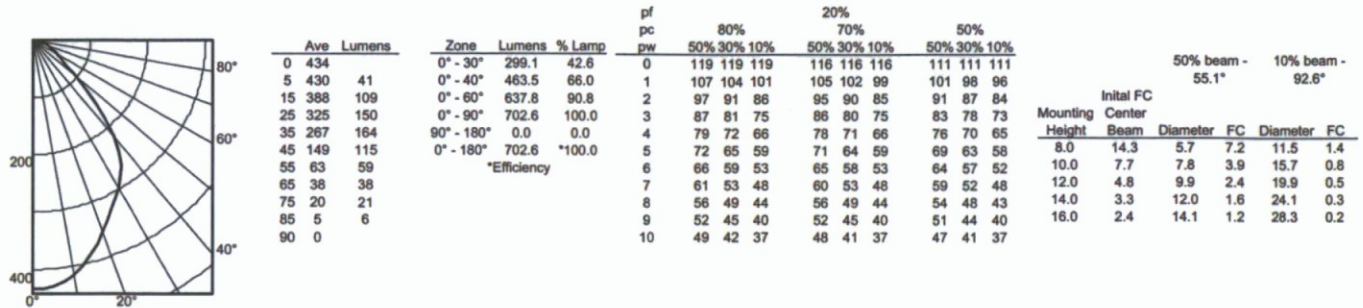
Trim finish	Lumen multiplier
Matte White	1.00 (Baseline)
Clear Diffuse	0.99
Clear Specular	0.99
Brushed Nickel	0.83
Black Baffle	0.76
Oil Rubbed Bronze	0.78

Color temperature	Lumen multiplier
2700K	0.97
3000K	1.00 (Baseline)
4000K	1.08

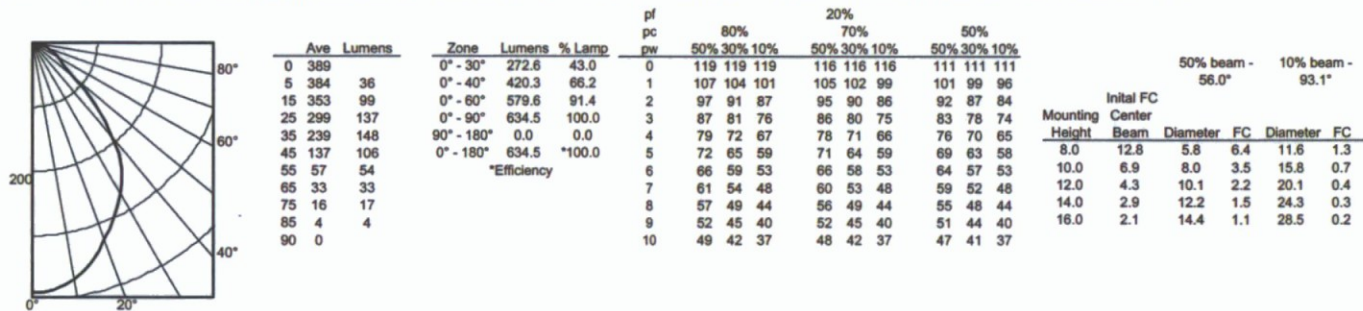
PHOTOMETRICS

Distribution Curve Distribution Data Output Data Coefficient of Utilization Illuminance Data at 30" Above Floor for a Single Luminaire

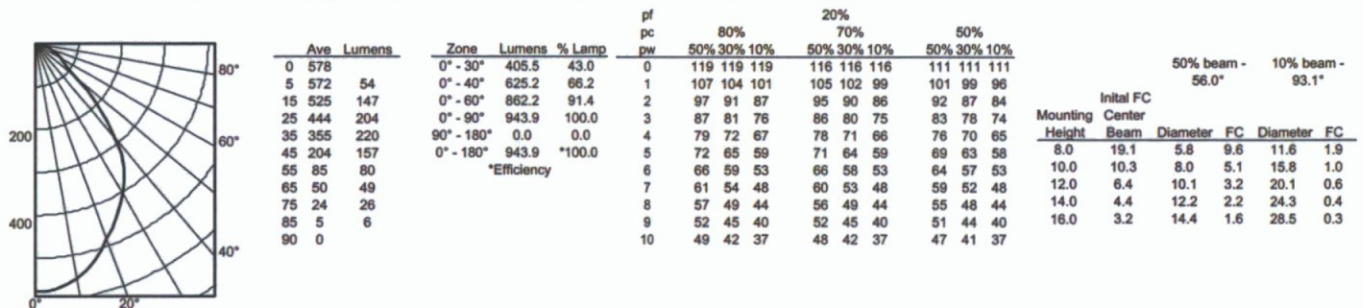
6BPMW LED, 3000 K LEDs, input watts: 12.7, delivered lumens: 703, LM/W=55.4, test no. LTL25711P, tested in accordance with IESNA LM 79-08



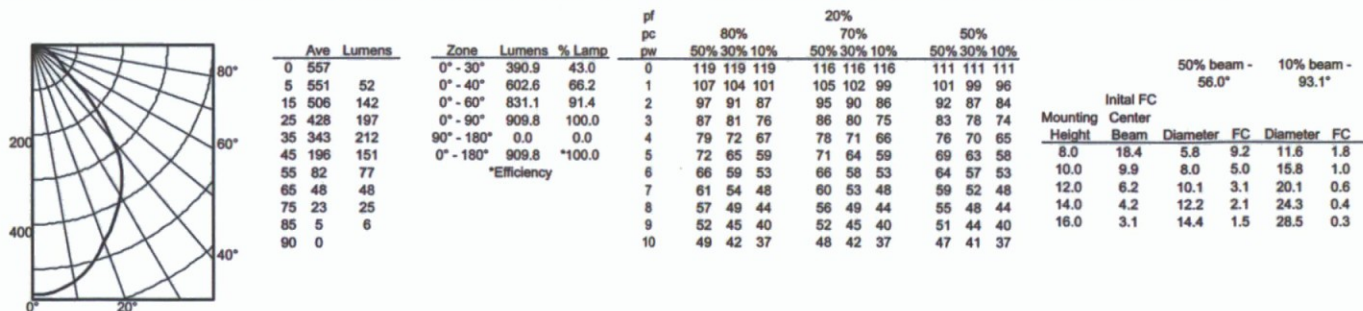
6BPMW LED 90CRI, 3000 K LEDs, input watts: 10.3, delivered lumens: 634, LM/W=62, test no. LTL 23864P, tested in accordance with IESNA LM 79-08



6BPMW HL LED 80CRI, 3000 K LEDs, input watts: 15.2, delivered lumens: 950, LM/W=63, test no. LTL23864, tested in accordance with IESNA LM 79-80



6BPMW HL LED 90CRI, 3000 K LEDs, input watts: 16.6, delivered lumens: 910, LM/W=55, test no. LTL 23864P1, tested in accordance with IESNA LM 79-08



LIGHTING FACTS

LED lighting facts
A Program of the U.S. DOE

Light Output (Lumens) **725**
Watts **12.7**
Lumens per Watt (Efficacy) **57**

Color Accuracy
Color Rendering Index (CRI) **83**

Light Color
Correlated Color Temperature (CCT) **3000 (Bright White)**

2700K 3000K 4500K 6500K

Warm White Bright White Daylight

All results are according to IESNA LM-79-2008. Approved Method for the Electrical and Photometric Testing of Solid-State Lighting. The U.S. Department of Energy (DOE) verifies product test data and results.

Visit www.lightingfacts.com for the Label Reference Guide.

Registration Number: J822-PL709N (2/27/2014)
Model Number: 6BPMV LED
Type: Retrofit Kit - Downlight

LED lighting facts
A Program of the U.S. DOE

Light Output (Lumens) **600**
Watts **10.5**
Lumens per Watt (Efficacy) **57**

Color Accuracy
Color Rendering Index (CRI) **93**

Light Color
Correlated Color Temperature (CCT) **2700 (Warm White)**

2700K 3000K 4500K 6500K

Warm White Bright White Daylight

All results are according to IESNA LM-79-2008. Approved Method for the Electrical and Photometric Testing of Solid-State Lighting. The U.S. Department of Energy (DOE) verifies product test data and results.

Visit www.lightingfacts.com for the Label Reference Guide.

Registration Number: J822-2330CD (2/27/2014)
Model Number: 6BPMV LED 27K 30CR
Type: Retrofit Kit - Downlight

LED lighting facts
A Program of the U.S. DOE

Light Output (Lumens) **600**
Watts **10.5**
Lumens per Watt (Efficacy) **57**

Color Accuracy
Color Rendering Index (CRI) **93**

Light Color
Correlated Color Temperature (CCT) **3000 (Bright White)**

2700K 3000K 4500K 6500K

Warm White Bright White Daylight

All results are according to IESNA LM-79-2008. Approved Method for the Electrical and Photometric Testing of Solid-State Lighting. The U.S. Department of Energy (DOE) verifies product test data and results.

Visit www.lightingfacts.com for the Label Reference Guide.

Registration Number: J822-23WVY (2/27/2014)
Model Number: 6BPMV LED 30K 90CR
Type: Retrofit Kit - Downlight

LED lighting facts
A Program of the U.S. DOE

Light Output (Lumens) **650**
Watts **9.9**
Lumens per Watt (Efficacy) **65**

Color Accuracy
Color Rendering Index (CRI) **92**

Light Color
Correlated Color Temperature (CCT) **4000 (Bright White)**

2700K 3000K 4500K 6500K

Warm White Bright White Daylight

All results are according to IESNA LM-79-2008. Approved Method for the Electrical and Photometric Testing of Solid-State Lighting. The U.S. Department of Energy (DOE) verifies product test data and results.

Visit www.lightingfacts.com for the Label Reference Guide.

Registration Number: NLSM-32VJL7 (8/6/2014)
Model Number: 6BPMV LED 40K 90CR
Type: Luminaire - Downlight

LED lighting facts
A Program of the U.S. DOE

Light Output (Lumens) **950**
Watts **15.2**
Lumens per Watt (Efficacy) **63**

Color Accuracy
Color Rendering Index (CRI) **84**

Light Color
Correlated Color Temperature (CCT) **3000 (Bright White)**

2700K 3000K 4500K 6500K

Warm White Bright White Daylight

Warranty** **Yes**

All results, except LED Lumen Maintenance, are according to IESNA LM-79-2008. Approved Method for the Electrical and Photometric Testing of Solid-State Lighting. The U.S. Department of Energy (DOE) verifies product test data and results.

** See www.lightingfacts.com/products for details.

Registration Number: J822-0436N (8/6/2014)
Model Number: 6BP HL (Revised 07-25-13)
Type: Recessed downlight

LED lighting facts
A Program of the U.S. DOE

Light Output (Lumens) **860**
Watts **16.7**
Lumens per Watt (Efficacy) **51**

Color Accuracy
Color Rendering Index (CRI) **93**

Light Color
Correlated Color Temperature (CCT) **2700 (Warm White)**

2700K 3000K 4500K 6500K

Warm White Bright White Daylight

All results are according to IESNA LM-79-2008. Approved Method for the Electrical and Photometric Testing of Solid-State Lighting. The U.S. Department of Energy (DOE) verifies product test data and results.

Visit www.lightingfacts.com for the Label Reference Guide.

Registration Number: J822-0070D (2/27/2014)
Model Number: 6BPMV HL LED 27K 90CR
Type: Retrofit Kit - Downlight

LED lighting facts
A Program of the U.S. DOE

Light Output (Lumens) **860**
Watts **16.7**
Lumens per Watt (Efficacy) **51**

Color Accuracy
Color Rendering Index (CRI) **93**

Light Color
Correlated Color Temperature (CCT) **3000 (Bright White)**

2700K 3000K 4500K 6500K

Warm White Bright White Daylight

All results are according to IESNA LM-79-2008. Approved Method for the Electrical and Photometric Testing of Solid-State Lighting. The U.S. Department of Energy (DOE) verifies product test data and results.

Visit www.lightingfacts.com for the Label Reference Guide.

Registration Number: J822-F1L72 (2/27/2014)
Model Number: 6BPMV HL LED 30K 90CR
Type: Retrofit Kit - Downlight

LED lighting facts
A Program of the U.S. DOE

Light Output (Lumens) **950**
Watts **16.4**
Lumens per Watt (Efficacy) **57**

Color Accuracy
Color Rendering Index (CRI) **92**

Light Color
Correlated Color Temperature (CCT) **4000 (Bright White)**

2700K 3000K 4500K 6500K

Warm White Bright White Daylight

All results are according to IESNA LM-79-2008. Approved Method for the Electrical and Photometric Testing of Solid-State Lighting. The U.S. Department of Energy (DOE) verifies product test data and results.

Visit www.lightingfacts.com for the Label Reference Guide.

Registration Number: NLSM-HRS367 (8/6/2014)
Model Number: 6BPMV HL LED 40K 90CR
Type: Luminaire - Downlight



KAXW LED Wall Luminaire



Catalog Number
Notes
Type

Hit the Tab key or mouse over the page to see all interactive elements.

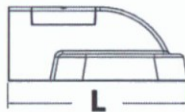
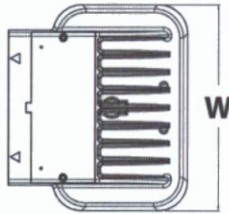
Specifications

Length: 14"
(35.6 cm)

Width: 12"
(30.5 cm)

Height: 5"
(12.7 cm)

Weight (max): 19.7 lbs
(8.9 kg)



Introduction

This feature-rich luminaire embodies the highest level of functionality, making it the perfect choice for most building mount applications. The optics are specifically designed to maximize the light in the desired area making it the smart choice for building-mounted doorway and pathway illumination on nearly any type of facility. By providing the maximum amount of light at minimal cost, the KAXW is the perfect choice for new installations or retrofit installations replacing up to 400W MH.

Ordering Information

EXAMPLE: KAXW LED P3 40K R3 MVOLT DDBXD

KAXW LED												
Series	Performance package	Color temperature	Distribution	Voltage	Mounting	Control options	Other options	Finish (required)				
KAXW LED	P1	30K 3000 K	R3 Type 3	MVOLT ¹	Shipped included (blank) Surface mounting bracket	Shipped installed	Shipped installed	DDBXD Dark bronze	DBLXD Black			
	P2	40K 4000 K	R4 Type 4	120 ¹						PER NEMA twist-lock receptacle only (no controls) ^{3,4}	SF Single fuse (120, 277 or 347V) ⁹	DBLXD Black
	P3	50K 5000 K		208 ¹						PER5 Five-wire receptacle only (no controls) ^{4,5}	DF Double fuse (208, 240 or 480V) ⁹	DNAXD Natural aluminum
				240 ¹		PER7 Seven-wire receptacle only (no controls) ^{4,5}		DWHXD White	DSSXD Sandstone			
				277 ¹		PIR 180° motion/ambient light sensor, <15' mtg ht ⁶	HS House-side shield ¹⁰	DDBTXD Textured dark bronze				
				347 ²		FAO Field adjustable output ⁷	LCE Left Conduit Entry ¹¹	DBLBXD Textured black	DNATXD Textured natural aluminum			
				480 ²			RCE Right Conduit Entry ¹¹	DWHGXD Textured white	DSSTXD Textured sandstone			
							BSW Bird-deterrent spikes ¹⁰					
							EGS External glare shield ¹⁰					

NOTES

- MVOLT driver operates on any line voltage from 120-277V (50/60 Hz). Specify 120V, 208V, 240V or 277V options only when ordering with fusing (SF, DF options).
- Not available in the P1 performance package.
- Not available with ROAM®. See PER5 or PER7 option.
- Photocell ordered and shipped as a separate line item from Acuity Brands Controls. See Accessories information.
- If ROAM® node required, it must be ordered and shipped as a separate line item from Acuity Brands Controls.

- Specifies the Sensor Switch MSOD-7-ODP control; see Motion Sensor Guide for details. Dimming driver standard. Not available with PER5 or PER7. Must specify 120V or 277V.
- Dimming driver standard. Not available with PER5 or PER7 options.
- Must specify 120, 277, or 347V option.
- Must specify 208, 240, or 480V option.
- Also available as a separate accessory; see Accessories information.
- Requires a contractor supplied ½" EMT raintight fitting.
- Requires luminaire to be specified with PER, PER5 or PER7 option. Ordered and shipped as a separate line item from Acuity Brands Controls.

Accessories

Ordered and shipped separately.

DLL127F 1.5 JU	Photocell - SSL twist-lock (120-277V) ¹²
DLL347F 1.5 CUL JU	Photocell - SSL twist-lock (347V) ¹²
DLL480F 1.5 CUL JU	Photocell - SSL twist-lock (480V) ¹²
DSHORT SBK U	Shorting cap
KAXWHS U	House-side shield
KAXWBSW U	Bird-deterrent spikes
KAXWEGS U	External glare shield

Lumen Output

Lumen values are from photometric tests performed in accordance with IESNA LM-79-08. Data is considered to be representative of the configurations shown, within the tolerances allowed by Lighting Facts. Contact factory for performance data on any configurations not shown here.

Performance Package	System Watts	Dist. Type	30K (3000 K, 70 CRI)					40K (4000 K, 70 CRI)					50K (5000 K, 70 CRI)				
			Lumens	B	U	G	LPW	Lumens	B	U	G	LPW	Lumens	B	U	G	LPW
P1	29	R3	3,322	1	0	1	115	3,545	1	0	1	122	3,607	1	0	1	124
		R4	3,415	1	0	1	118	3,643	1	0	1	126	3,707	1	0	1	128
P2	49	R3	5,731	1	0	1	117	6,115	1	0	1	125	6,222	1	0	1	127
		R4	5,891	1	0	1	120	6,285	1	0	1	128	6,396	1	0	1	131
P3	79	R3	8,852	1	0	1	112	9,445	2	0	2	120	9,611	2	0	2	122
		R4	9,099	2	0	2	115	9,708	2	0	2	123	9,879	2	0	2	125

Lumen Ambient Temperature (LAT) Multipliers

Use these factors to determine relative lumen output for average ambient temperatures from 0-50°C (32-122°F).

* Shaded cells include active dynamic temperature sensing.

Ambient	Lumen Multiplier		
	P1	P2	P3
0°C	1.05	1.05	1.05
10°C	1.03	1.03	1.03
20°C	1.01	1.01	1.01
25°C	1	1	1
30°C	0.99	0.99	0.99
40°C	0.97	0.97	0.93
45°C	0.96	0.96	0.84
50°C	0.95	0.95	0.74

Electrical Load

Package		120V	208V	240V	277V	347V	480V
P1	Current (A)	0.24A	0.14A	0.13A	0.11A		
	System Watts	29W	29W	29W	29W		
P2	Current (A)	0.41A	0.24A	0.21A	0.18A	0.14A	0.11A
	System Watts	49W	48W	48W	48W	47W	47W
P3	Current (A)	0.66A	0.38A	0.33A	0.29A	0.23A	0.17A
	System Watts	79W	78W	78W	78W	77W	76W

Projected LED Lumen Maintenance

Operating Hours	25,000	50,000	100,000
Lumen Maintenance Factor	>0.94	>0.89	>0.80

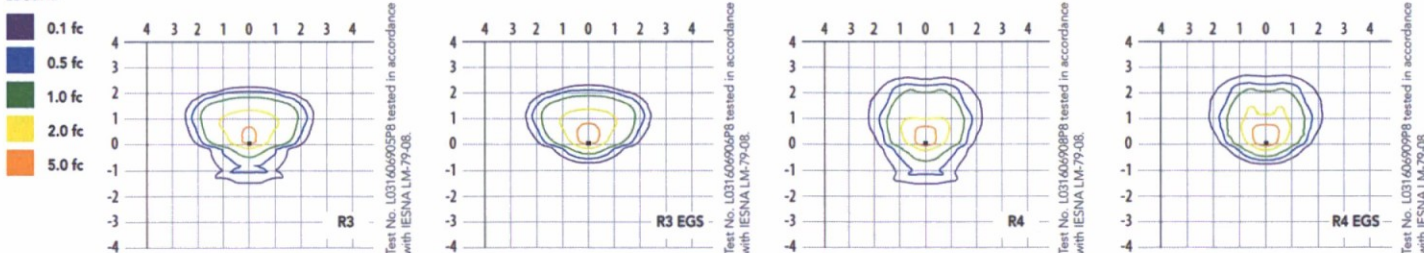
Values calculated according to IESNA TM-21-11 methodology and valid up to 40°C.

Photometric Diagrams

To see complete photometric reports or download .ies files for this product, visit Lithonia Lighting's [KAXW homepage](#).

Isofootcandle plots for the KAXW LED P3 40K. Distances are in units of mounting height (20').

LEGEND



FEATURES & SPECIFICATIONS

INTENDED USE

This feature-rich luminaire embodies the highest level of functionality with extraordinary efficacy which maximizes your application efficiency providing high levels of light for minimal cost specifically for building-mounted doorway and pathway illumination on nearly any type of facility.

CONSTRUCTION

The die-cast aluminum housing has integral heat sink fins to optimize thermal management through conductive and convective cooling. This modular design allows for ease of maintenance and future light engine upgrades. The LED driver is installed in a separate compartment to thermally isolate it from the light engines for low operating temperature and long life. The housing is completely sealed against moisture and environmental contaminants (IP65).

FINISH

Exterior parts are protected by a zinc-infused Super Durable TGIC thermoset powder coat finish that provides superior resistance to corrosion and weathering. A tightly controlled multi-stage process ensures a minimum 3 mils thickness for a finish that can withstand extreme climate changes without cracking or peeling. Available in both textured and non-textured finishes.

OPTICS

Individually formed acrylic lenses are engineered for superior application efficiency which maximizes the light in the areas where it is most needed. Light engines are available in 3000 K, 4000 K or 5000 K (minimum 70 CRI) configurations. The KAXW has zero uplight and qualifies as a Nighttime Friendly™ product, meaning it is consistent with the LEED® and Green Globes™ criteria for eliminating wasteful uplight.

ELECTRICAL

Light engine(s) configurations consist of high-efficiency LEDs mounted to metal-core circuit boards to maximize heat dissipation and promote long life (up to >L80/100,000 hours). Class 1 electronic drivers are designed to have a power factor >90%, THD <20%, and an expected life of 100,000 hours.

INSTALLATION

Included wall mount plate facilitates a quick and easy installation. Mounting bolts feature a 1000-hour salt fog finish. Optional bi-level motion sensor and NEMA 3, 5 or 7 pin twist lock photocontrol receptacle are also available.

LISTINGS

CSA Listed for wet locations. Light engines and electrical compartment are IP66 rated. Rated for temperatures as low as -40°C minimum ambient.

DesignLights Consortium® (DLC) qualified product. Not all versions of this product may be DLC qualified. Please check the DLC Qualified Products List at www.designlights.org to confirm which versions are qualified.

WARRANTY

5-year limited warranty. Complete warranty terms located at: www.acuitybrands.com/CustomerResources/Terms_and_conditions.aspx.

Note: Actual performance may differ as a result of end-user environment and application. All values are design or typical values, measured under laboratory conditions at 25 °C. Specifications subject to change without notice.

IP65 : Suitable for Wet Locations
IK08 : Impact Resistant (Vandal Resistant)



UTA-31891

Tango 32 square wall up/down LED Type II, III, IV

Wall luminaires with a variety of lenses and lamps with up and downward light distributions. The Tango is unique as it is available with Type II, III, IV & V light distribution options that facilitates wider spacing and even light distribution between the light fixtures. Providing higher energy saving and reduced installation costs. The up-down versions can be manufactured with different distributions. Designed to illuminate the wall surface and for light accents on vertical surfaces.

Low copper content die-cast aluminum housing and aluminum frame with integral anti-glare baffles. Stainless steel screws. Durable silicone rubber gasket and clear toughened glass. Single cable entry. Housing is treated with a nickel and chrome phosphate protection before applying a 4.7 mil powder coating, this ensures high corrosion resistance. Integral electronic control gear.

Mounting plate for 3" and 4" junction box is provided with the fixture.

Surface mount conduit boxes are available as an option.

A round pole adapter can be manufactured to suit specific pole diameters. Please contact the factory for more information.

Physical Data

Length: 10.3"
Height: 10.8"
Weight: 14.3 lbs

Lamp

- 2x38w - White - LED ☉
- 2x20w - White - LED ☉
- 2x28w - White - LED ☉

Distribution Type (Please Specify)

- T2 - Type II
- T3 - Type III
- T4 - Type IV

LED Color (Please Specify)

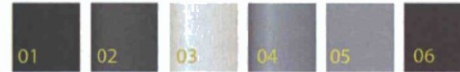
- W27 - 2700K
- W30 - 3000K
- W40 - 4000K

Voltage (Please Specify)

- 120v/277v
- Other _____

Color (Please Specify)

- 01-Black - RAL 9011
- 02- Dark Grey - RAL 7043
- 03-White - RAL 9003
- 04 - Metallic Silver - RAL 9006
- 05-Matt Silver - RAL 9006
- 07- Custom - RAL _____
- 06-Bronze - RAL 6014

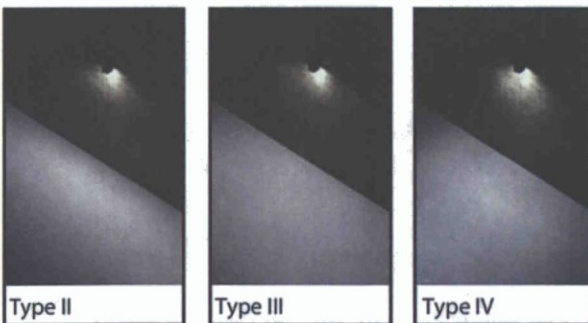
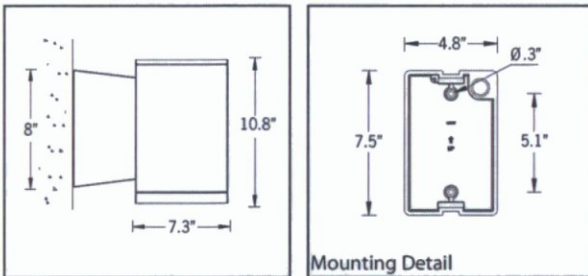
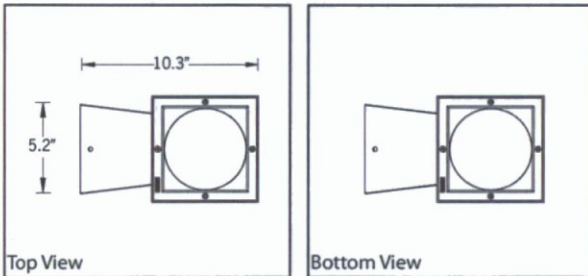
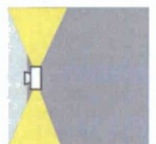


Options (Please Specify)

- F - Frosted Lens
- C - Clear Lens



- SCE - Surface Conduit Entry Box - 1/2" Conduit 3/4" Conduit
- HGT - Specify Custom Height _____



Up, Down and Up/Down styles available upon request. Custom distribution types for the various styles are also available.

Ordering Example : UTA - 31891 - 2x38w - W30 - T2 - 120v - Options

PROJECT: _____

DATE: _____





OLWX1 LED

LED Wall Luminaire



Catalog
Number

Notes

Type

Hit the Tab key or mouse over the page to see all interactive elements.

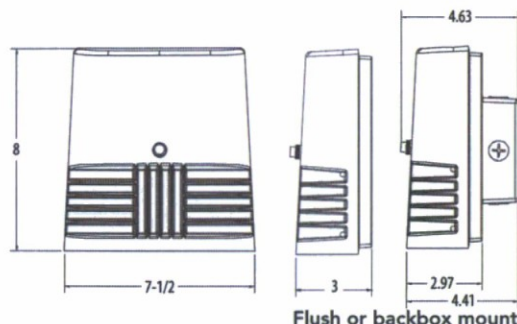
Specifications

Width: 7-1/2"
(19 cm)

Height: 8"
(20.3 cm)

Depth: 3"
(7.62 cm)

Weight: 5 lbs
(2.27kg)



Introduction

As versatile as it is efficient, the OLWX1 is designed to replace up to 250W metal halide while saving over 87% in energy costs. It combines multiple mounting options with the latest generation of LEDs for a wall pack luminaire that converts to a whole lot more. Whether you are mounting it to a recessed junction box, conduit/through wiring, as an up light, as a down light, or as a flood light – the OLWX1 has you covered.

Ordering Information

EXAMPLE: OLWX1 LED 20W 50K

OLWX1 LED								
Series	Performance Package		Color Temperature		Voltage		Controls	Finish
OLWX1 LED	13W	13 watts	40K	4000 K ¹	(blank)	MVOLT ²	(blank)	None 120V button photocell ^{1,3}
	20W	20 watts	50K	5000 K	120	120V ³	PE	
	40W	40 watts			347	347V		

Accessories

Ordered and shipped separately.

OLWX1TS	Slipfitter – size 1
OLWX1YK	Yoke – size 1
OLWX1THK	Knuckle – size 1

NOTES

- 1 Not available with 347V option.
- 2 MVOLT driver operates on any line voltage from 120-277V (50/60Hz).
- 3 Specify 120V when ordering with photocell (PE option).

FEATURES & SPECIFICATIONS

INTENDED USE

The versatility of the OLWX1 LED combines a sleek, low-profile wall pack design and high-output LEDs to provide an energy efficient, low maintenance LED wall pack suitable for replacing up to 250W metal halide fixtures. Available flood light mounting accessories convert the OLWX1 LED into a highly efficient flood light.

OLWX1 LED is ideal for outdoor applications such as building perimeters, loading areas, driveways and sign and building flood lighting.

CONSTRUCTION

Rugged cast-aluminum housing with textured dark bronze polyester powder paint for lasting durability. Integral heat sinks optimize thermal management through conductive and convective cooling. LEDs are protected behind a glass lens. Housing is sealed against moisture and environmental contaminants (IP65).

OPTICS

High-performance LEDs behind clear glass for maximum light output. Light engines are available in 4000K and 5000K CCTs. See Lighting Facts label and photometry reports for specific fixture performance.

ELECTRICAL

Light engine consists of 1 high-efficiency Chip On Board (COB) LED with integrated circuit board mounted directly to the housing to maximize heat dissipation and promote long life (L73/100,000 hours at 25°C). Electronic drivers have a power factor >90% and THD <20% and a minimum 2.5kV surge rating. Flood light mounting accessories include an additional 6kV surge protection device.

INSTALLATION

Easily mounts to recessed junction boxes with the included wall mount bracket, or for surface mounting and conduit entry - with the included junction box with five 1/2" threaded conduit entry hubs. Flood light mounting accessories (sold separately) include knuckle, integral slipfitter and yoke mounting options. Each flood mount accessory comes with a top visor and vandal guard. Luminaire may be wall or ground mounted in downward or upward orientation.

LISTINGS

UL listed to U.S. and Canadian safety standards for wet locations. Rated for -40° C minimum ambient. Tested in accordance with IESNA LM-79 and LM-80 standards. DesignLights Consortium® (DLC) qualified product. Not all versions of this product may be DLC qualified. Please check the DLC Qualified Products List at www.designlights.org to confirm which versions are qualified.

WARRANTY

Five-year limited warranty. Full warranty terms located at www.acuitybrands.com/CustomResources/Terms_and_conditions.aspx.

Note: Actual performance may differ as a result of end-user environment and application. All values are design or typical values, measured under laboratory conditions at 25°C. Specifications subject to change without notice.

Performance Data

Lumen Output

Lumen values are from photometric tests performed in accordance with IESNA LM-79-08. Data is considered to be representative of the configurations shown, within the tolerances allowed by Lighting Facts.

Fixture Model Number	CCT	System Watts	Lumens	LPW	B	U	G	CRI
OLWX1 LED 13W 40K	4000 K	14 W	1,271	91	1	0	0	>70
OLWX1 LED 13W 50K	5000 K	14 W	1,289	92	1	0	0	>80
OLWX1 LED 20W 40K	4000 K	22 W	1,854	84	1	0	0	>70
OLWX1 LED 20W 50K	5000 K	22 W	1,860	84	1	0	0	>80
OLWX1 LED 40W 40K	4000 K	39 W	4,027	101	2	0	0	>70
OLWX1 LED 40W 50K	5000 K	37 W	4,079	110	2	0	0	>70

Electrical Load

Fixture Model Number	Rated Power (watts)	Input current at given input voltage (amps)				
		120V	208V	240V	277V	347V
OLWX1 LED 13W 40K	14 W	0.12	0.07	0.06	0.06	0.04
OLWX1 LED 13W 50K	14 W	0.12	0.07	0.06	0.06	0.04
OLWX1 LED 20W 40K	22 W	0.20	0.12	0.10	0.09	0.06
OLWX1 LED 20W 50K	22 W	0.20	0.12	0.10	0.09	0.06
OLWX1 LED 40W 40K	39 W	0.37	0.21	0.19	0.16	0.11
OLWX1 LED 40W 50K	37 W	0.37	0.21	0.19	0.16	0.11

Lumen Ambient Temperature (LAT) Multipliers

Use these factors to determine relative lumen output for average ambient temperatures from 0-40°C (32-104°F).

	0°C	10°C	20°C	25°C	30°C	40°C
13W	1.06	1.03	1.01	1.00	0.99	0.96
20W	1.06	1.04	1.01	1.00	0.99	0.96
40W	1.07	1.04	1.01	1.00	0.99	0.96

Projected LED Lumen Maintenance

Data references the extrapolated performance projections in a 25°C ambient, based on 10,000 hours of LED testing (tested per IESNA LM-80-08 and projected per IESNA TM-21-11).

To calculate LLF, use the lumen maintenance factor that corresponds to the desired number of operating hours below. For other lumen maintenance values, contact factory.

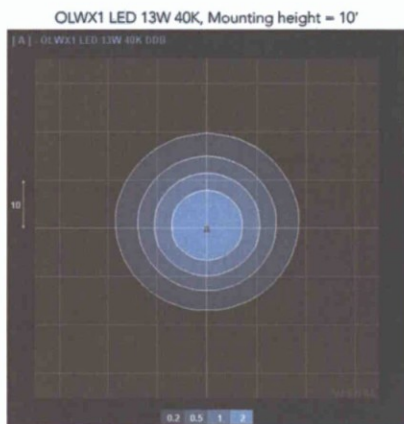
Operating Hours	0	25,000	50,000	100,000
OLWX1 LED 13W	1.00	0.92	0.85	0.73
OLWX1 LED 20W	1.00	0.92	0.85	0.73
OLWX1 LED 40W	1.00	0.94	0.88	0.79

Photometric Diagrams

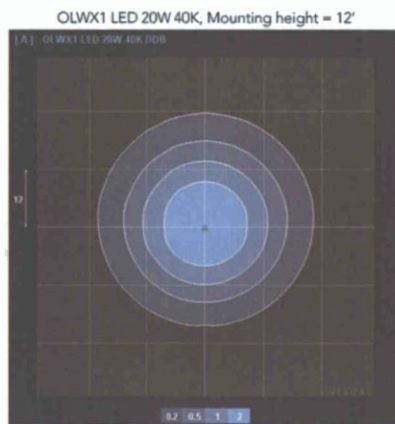
To see complete photometric reports or download .ies files for this product, visit the Lithonia Lighting OLWX1 LED homepage. Tested in accordance with IESNA LM-79 and LM-80 standards

LEGEND

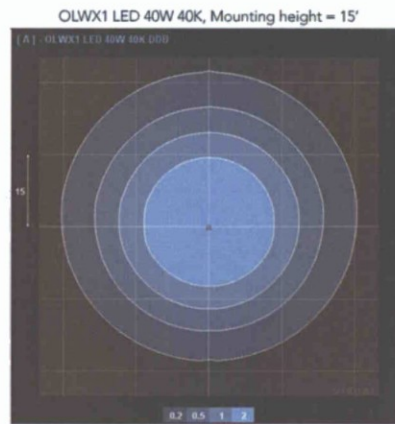
0.2 fc
0.5 fc
1.0 fc
2.0 fc



Test No. LTL22697 tested in accordance with IESNA LM-79-08.



Test No. LTL22696 tested in accordance with IESNA LM-79-08.



Test No. LTL22695 tested in accordance with IESNA LM-79-08.

Accessories



OLWX1TS
Slipfitter - size 1



OLWX1YK
Yoke - size 1



OLWX1THK
Knuckle - size 1



Top Visor and Vandal Guard
included with accessories

Lighting Facts Labels

OLWX1 LED 13W 40K XXX XX XXX

Lithonia Lighting

LED lighting facts[®]

A Program of the U.S. DOE

Light Output (Lumens)	1271
Watts	14
Lumens per Watt (Efficacy)	90

Color Accuracy	76
Color Rendering Index (CRI)	

Light Color
Correlated Color Temperature (CCT): 4000 (Bright White)

2700K 3000K 4500K 6500K

All results are according to IESNA LM-79-2008: Approved Method for the Electrical and Photometric Testing of Solid-State Lighting. The U.S. Department of Energy (DOE) verifies product test data and results.

Visit www.lightingfacts.com for the Label Reference Guide.

Registration Number: NJSM-B7TTMD (6/23/2014)
Model Number: OLWX1 LED 13W 40K XXX XX XXX
Type: Luminaire - Other

OLWX1 LED 13W 50K XXX XX XXX

Lithonia Lighting

LED lighting facts[®]

A Program of the U.S. DOE

Light Output (Lumens)	1289
Watts	13.6
Lumens per Watt (Efficacy)	94

Color Accuracy	83
Color Rendering Index (CRI)	

Light Color
Correlated Color Temperature (CCT): 5000 (Daylight)

2700K 3000K 4500K 6500K

All results are according to IESNA LM-79-2008: Approved Method for the Electrical and Photometric Testing of Solid-State Lighting. The U.S. Department of Energy (DOE) verifies product test data and results.

Visit www.lightingfacts.com for the Label Reference Guide.

Registration Number: NJSM-VYH35V (5/27/2014)
Model Number: OLWX1 LED 13W 50K XXX XX XXX
Type: Luminaire - Other

OLWX1 LED 20W 40K XXX XX XXX

Lithonia Lighting

LED lighting facts[®]

A Program of the U.S. DOE

Light Output (Lumens)	1854
Watts	21.77
Lumens per Watt (Efficacy)	85

Color Accuracy	76
Color Rendering Index (CRI)	

Light Color
Correlated Color Temperature (CCT): 4000 (Bright White)

2700K 3000K 4500K 6500K

All results are according to IESNA LM-79-2008: Approved Method for the Electrical and Photometric Testing of Solid-State Lighting. The U.S. Department of Energy (DOE) verifies product test data and results.

Visit www.lightingfacts.com for the Label Reference Guide.

Registration Number: NJSM-AQJAND (6/23/2014)
Model Number: OLWX1 LED 20W 40K XXX XX XXX
Type: Luminaire - Other

OLWX1 LED 20W 50K XXX XX XXX

Lithonia Lighting

LED lighting facts[®]

A Program of the U.S. DOE

Light Output (Lumens)	1861
Watts	22.15
Lumens per Watt (Efficacy)	84

Color Accuracy	81
Color Rendering Index (CRI)	

Light Color
Correlated Color Temperature (CCT): 5070 (Daylight)

2700K 3000K 4500K 6500K

All results are according to IESNA LM-79-2008: Approved Method for the Electrical and Photometric Testing of Solid-State Lighting. The U.S. Department of Energy (DOE) verifies product test data and results.

Visit www.lightingfacts.com for the Label Reference Guide.

Registration Number: NJSM-S1VH46 (6/18/2014)
Model Number: OLWX1 LED 20W 50K XXX XX XXX
Type: Luminaire - Other

OLWX1 LED 40W 40K XXX XX XXX

Lithonia Lighting

LED lighting facts[®]

A Program of the U.S. DOE

Light Output (Lumens)	4027
Watts	39.81
Lumens per Watt (Efficacy)	101

Color Accuracy	70
Color Rendering Index (CRI)	

Light Color
Correlated Color Temperature (CCT): 4000 (Bright White)

2700K 3000K 4500K 6500K

All results are according to IESNA LM-79-2008: Approved Method for the Electrical and Photometric Testing of Solid-State Lighting. The U.S. Department of Energy (DOE) verifies product test data and results.

Visit www.lightingfacts.com for the Label Reference Guide.

Registration Number: NJSM-D12ZK1 (Revised)
Model Number: OLWX1 LED 40W 40K XXX XX XXX
Type: Luminaire - Other

OLWX1 LED 40W 50K XXX XX XXX

Lithonia Lighting

LED lighting facts[®]

A Program of the U.S. DOE

Light Output (Lumens)	4079
Watts	36.9
Lumens per Watt (Efficacy)	110

Color Accuracy	72
Color Rendering Index (CRI)	

Light Color
Correlated Color Temperature (CCT): 5116 (Daylight)

2700K 3000K 4500K 6500K

All results are according to IESNA LM-79-2008: Approved Method for the Electrical and Photometric Testing of Solid-State Lighting. The U.S. Department of Energy (DOE) verifies product test data and results.

Visit www.lightingfacts.com for the Label Reference Guide.

Registration Number: NJSM-F7MC2K (7/7/2014)
Model Number: OLWX1 LED 40W 50K XXX XX XXX
Type: Luminaire - Other

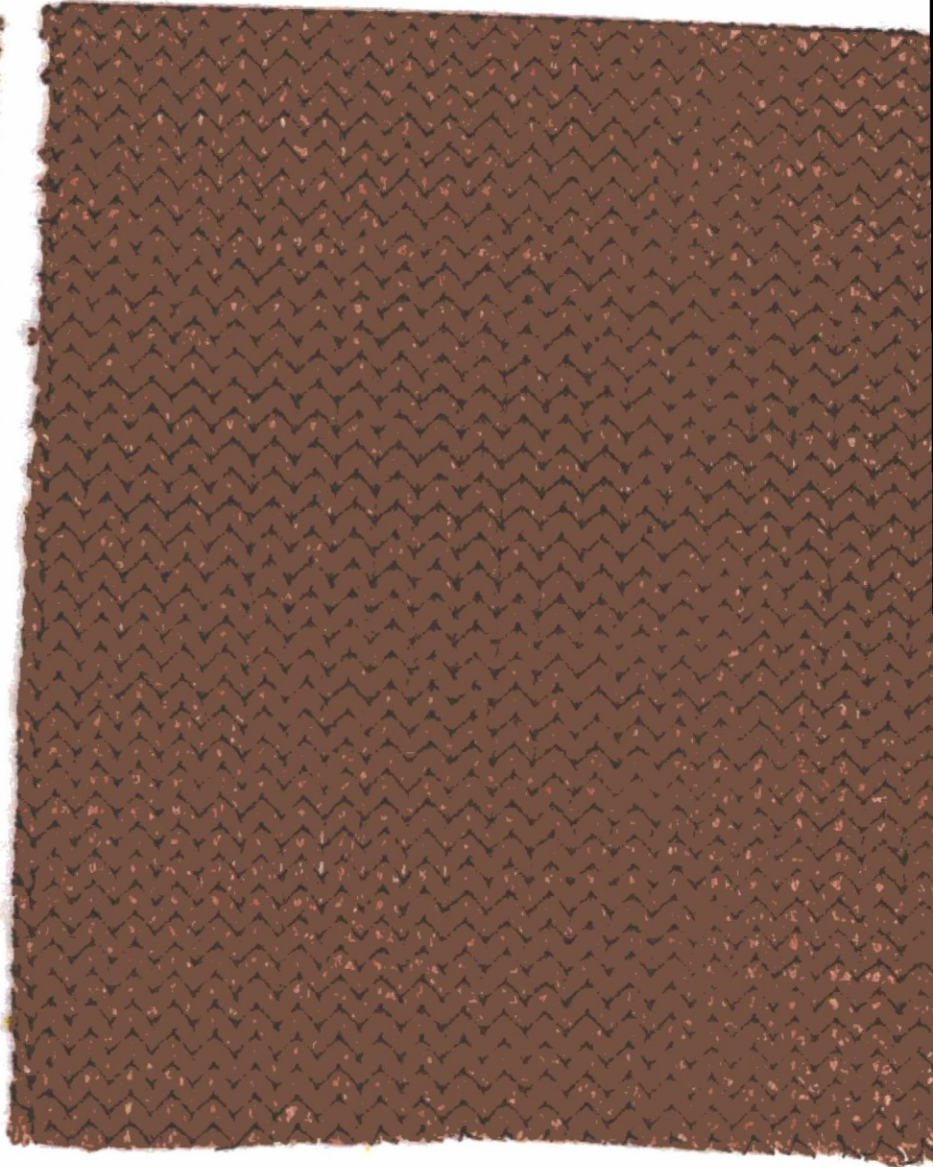
**APPROVED
FINAL PLANS PLANNING**

3/23/17

Bm

DATE

APPROVED BY



USA SHADE AND FABRIC STRUCTURES
COLOR: ARIZONA

USA SHADE AND FABRIC STRUCTURES
COLOR: TERRACOTTA



Dunn Edwards

188 14:40 8/13/2016 PARADISE VALLEY

DE 6213

FINE GRAIN

SSHL10-0 SPRTASHLD EX FLAT

Rev Date 03/26/2010

1 Quart L Y Notation /48

04: 0 Y+ 6.500

08: 0 Y+ 0.875

13: 0 Y+ 1.875

Custom Tinted Paint - Not Returnable for Exchange or Refund
Color may vary slightly from a color chip or container to container
Check for correct color match and confirm color before application
Dunn-Edwards accepts no responsibility for any mis-matched paint
after it has been applied

Dunn Edwards

188 14:41 9/13/2016 PARADISE VALLEY

DET 687

CARAMELIZED

SSHL10-0 SPRTASHLD EX FLAT

Rev Date 12/07/2014

1 Quart M Y Notation /48

04: 0 Y+ 18.656

08: 0 Y+ 8.938

13: 0 Y+ 2.750

Custom Tinted Paint - Not Returnable for Exchange or Refund

Color may vary slightly from a color chip or container to container

Check for correct color match and confirm color before application.

Dunn-Edwards accepts no responsibility for any mis-matched paint after it has been applied

Dunn Edwards

189 13:47 8/13/2016 PARADISE VALLEY
DET 444

HAPPY TRAILS

SSHL10-0 SPRTASHLD EX FLAT

Rev Date 12/07/2014

1 Quart M Y Notation 148

04: 0 Y+ 47.750

08: 0 Y+ 29.125

13: 0 Y+ 2.281

Custom Tinted Paint - Not Returnable for Exchange or Refund

Color may vary slightly from a color chip or container to container.
Check for correct color match and confirm color before application.
Dunn-Edwards accepts no responsibility for any mis-matched paint
after it has been applied.

Dunn Edwards

189 14:41 9/13/2016 PARADISE VALLEY

DET 621

PALOMINO PONY

SSHL10-0 SPRTASHLD EX FLAT

Rev Date 12/07/2014

1 Quart M Y Notation /48

04: 0 Y+ 18.406

08: 0 Y+ 11.063

13: 0 Y+ 19.375

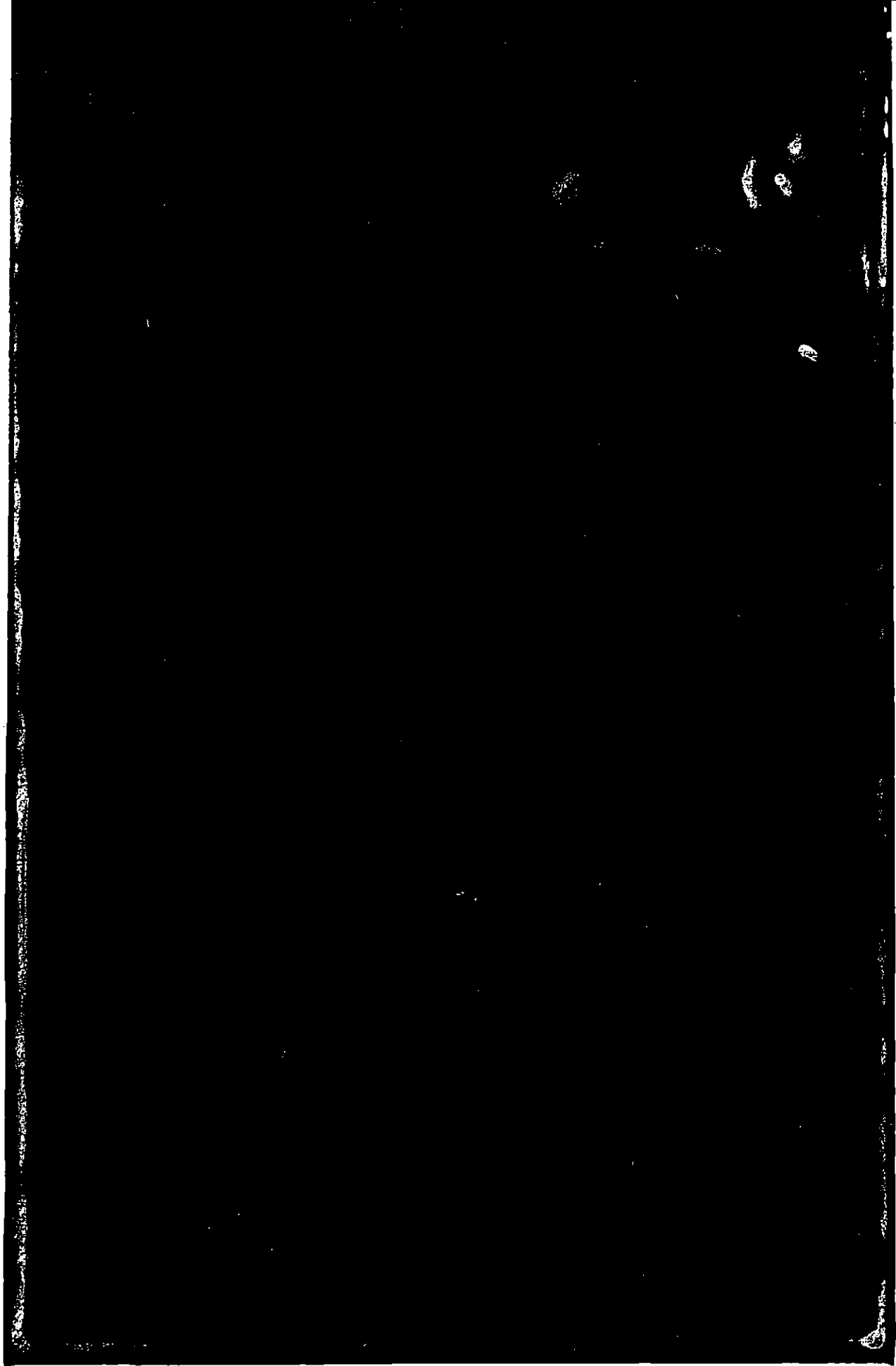
Custom Tinted Paint - Not Returnable for Exchange or Refund

Color may vary slightly from a color chip or container to container.

Check for correct color match and confirm color before application.

Dunn-Edwards accepts no responsibility for any mis-matched paint

after it has been applied.



Dunn Edwards

189 13:47 9/13/2016 PARADISE VALLEY

DET 619

CELLULOID

SSHL10-0 SPRTASHLD EX FLAT

Rev Date 08/23/2016

1 Quart U.Y Notation /48

04: 0 Y+ 11.406

08: 0 Y+ 10.625

13: 1 Y+ 22.781

14: 1 Y+ 5.563

Custom Tinted Paint - Not Returnable for Exchange or Refund.
Color may vary slightly from a color chip or container to container.
Check for correct color match and confirm color before application.
Dunn-Edwards accepts no responsibility for any mis-matched paint
after it has been applied.