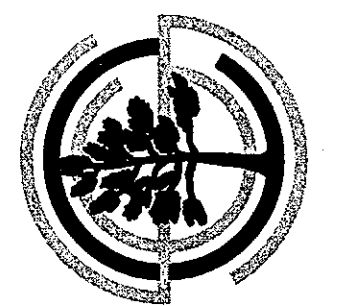


8280 E GELDING DR #101, SCOTTSDALE, ARIZONA 85260  
WWW.AZSEG.COM TEL. 480.598.7228



LOCATION  
8235 E. INDIAN BEND ROAD  
SCOTTSDALE, AZ 85250

DATE: 02/19/2018

REVISION NO.: DATE:

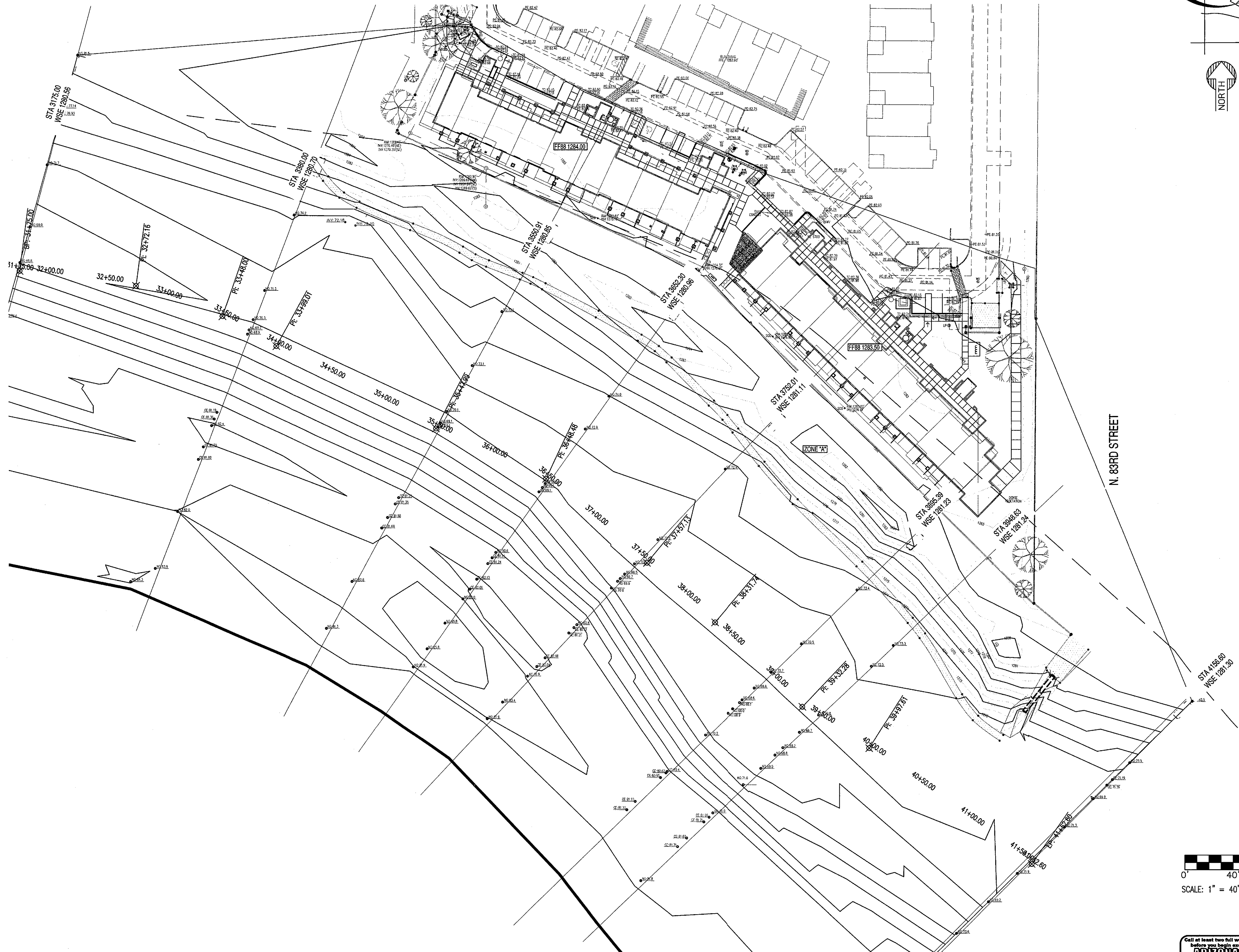
JOB NO.: 170602

SHEET TITLE:

HECRAS CROSS-SECTIONS MAP

SHEET NO.: **FIGURE 5**

THIS DRAWING IS AN INSTRUMENT OF SERVICE AND THE PROPERTY OF SUSTAINABILITY ENGINEERING GROUP, AND SHALL REMAIN THEIR PROPERTY. THE USE OF THIS DRAWING SHALL BE RESTRICTED TO THE ORIGINAL SITE FOR WHICH IT IS PREPARED AND PUBLICATION THEREOF IS EXPRESSLY LIMITED TO SUCH USE.



Call at least two full working days  
before you begin excavation.

**ARIZONA 811**  
Arizona One Stop, Inc.

Dial 8-1-1 or 1-800-STAKE-IT (782-8348)  
In Maricopa County: (602) 263-1100

**NOTE TO CONTRACTOR:**  
THIS SET OF DRAWINGS AND DOCUMENTS IS INTENDED AS A SET OF GUIDELINES FOR THE PROJECT AND ARE INTENDED TO BE USED IN CONJUNCTION WITH A SET OF SPECIFICATIONS AND CONDITIONS TO SUPPLEMENT THE DRAWINGS. THE USER MUST READ TO INCORPORATE ALL APPLICABLE FEDERAL, STATE, AND LOCAL CODES INCLUDING FEDERAL A.D.A. REQUIREMENTS. THIS SET ASSUMES THAT THERE ARE NO UNUSUAL SOIL CONDITIONS OR WIND LOADS. THE FAILURE OF THIS SET MAY REQUIRE RECONFIGURATION OF THE SUPPLEMENTARY CODES. THE USER IT IS THE RESPONSIBILITY OF THE GENERAL CONTRACTOR TO CONFORM TO ALL APPLICABLE CODES AND TO INFORM THE OWNERS/ARCHITECTS OF ANY QUESTIONS OR CLARIFICATIONS WHICH ARE DESIRED. CONTRACTORS SHALL ALSO VISIT THE SITE AND BE AWARE OF ANY OBSTACLES, UTILITIES, AND ALL OBSERVABLE CONDITIONS AND APPLICABLE CODES.