

**Simulations**  
**Photos**  
**All Graphics (no plans)**



## San Marcos Lanterns



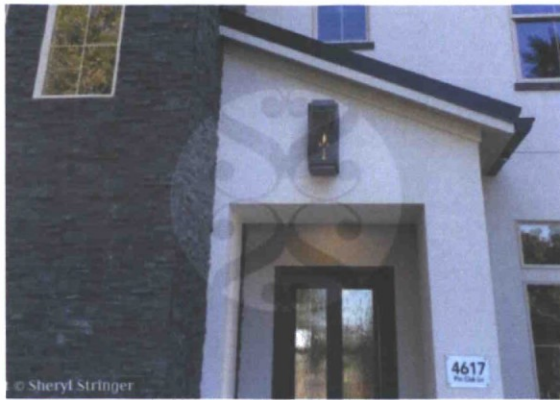
### San Marcos Gas Lantern Dark Patina Finish

San Marcos Gas Lantern, West University,  
Houston, TX



### San Marcos Gas Lights with Optional Extended Wall Mounting

San Marcos Gas Lanterns on Contemporary  
Home in West University, Houston



## San Marcos Natural Gas Lantern with Electronic Ignition

San Marcos Gas Lantern with Electronic ignition on Contemporary Home, Houston



## San Marcos Gas Lights with Optional Extended Wall Box

San Marcos Gas Lanterns on Extended Wall Brackets



## San Marcos Gas Lantern

San Marcos Gas Lantern Dark Patina finish



## San Marcos Straps Patina

San Marcos Gas Lanterns, Texas Hill Country Home



## San Marcos Gas Lights with Straps

San Marcos Gas Lantern, Texas Hill Country Home



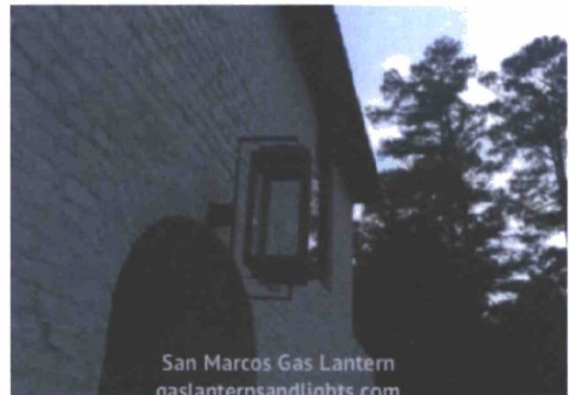
## San Marcos Straps

San Marcos Gas Lantern with Straps in Window Panes



## San Marcos Gas Light, Extra Long

San Marcos Gas Light, Custom Size



## Sheryl's Extra Large San Marcos Gas Light

Large Contemporary Gas Lights





## Large San Marcos Contemporary Gas Lights

Large San Marcos Contemporary Gas Lights



## Contemporary San Marcos Gas\_Lights

Large Contemporary San Marcos Gas Lights with  
Straps

### San Marcos Lanterns

Available in Different Sizes and Custom Options

My specialty is one on one consulting with homeowners to come up with the exact lantern that is just right for each home. If you don't see something that would work for your installation let me design something just for you. Please contact me and let's get started on creating a beautiful lantern that will create the ambiance that you desire for your new home. **To Order:** 713-626-4001 or email [sherylstringer@me.com](mailto:sherylstringer@me.com)

---

The copper lanterns have a lifetime warranty on the copper body. Please note that we do not warranty the finish. The lanterns are copper and will age and add character over time. Any metal that is exposed to the environment will react....not just copper. The patina finish is a natural or living finish. Copper forms a protective patina. It does not corrode. Lanterns can be painted with heat resistant paint if you have to have a consistent look. However, copper is a naturally beautiful metal and looks antique on it's own. Enjoy the natural beauty of the lantern!

Steel brackets are zinc primed and powder coated. Steel brackets have a one year warranty.

Electronic Ignition is optional and allows you to turn the gas lantern on and off with a light switch. It will automatically re-light the gas lantern if it blows out. A wide variety of flame bulbs for electric lanterns are available from Amazon.

Sheryl Stringer is an ASID Industry Partner.

### Contact Us About This Design

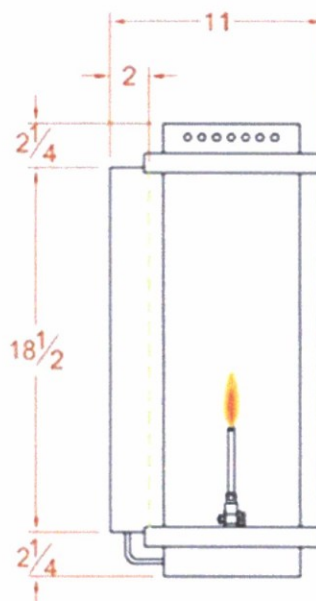
Name

Email

Message

SUBMIT





LINE DRAWING  
\_\_\_\_ APPROVED  
\_\_\_\_ RESUBMIT W/ CHANGES

\_\_\_\_  
YOUR INITIALS

\_\_\_\_  
DATE