

Exterior Building Color & Material Samples

Color Drawdowns

Archaeological Resources

Airport Vicinity Development Checklist

Parking Study

Trip Generation Comparison

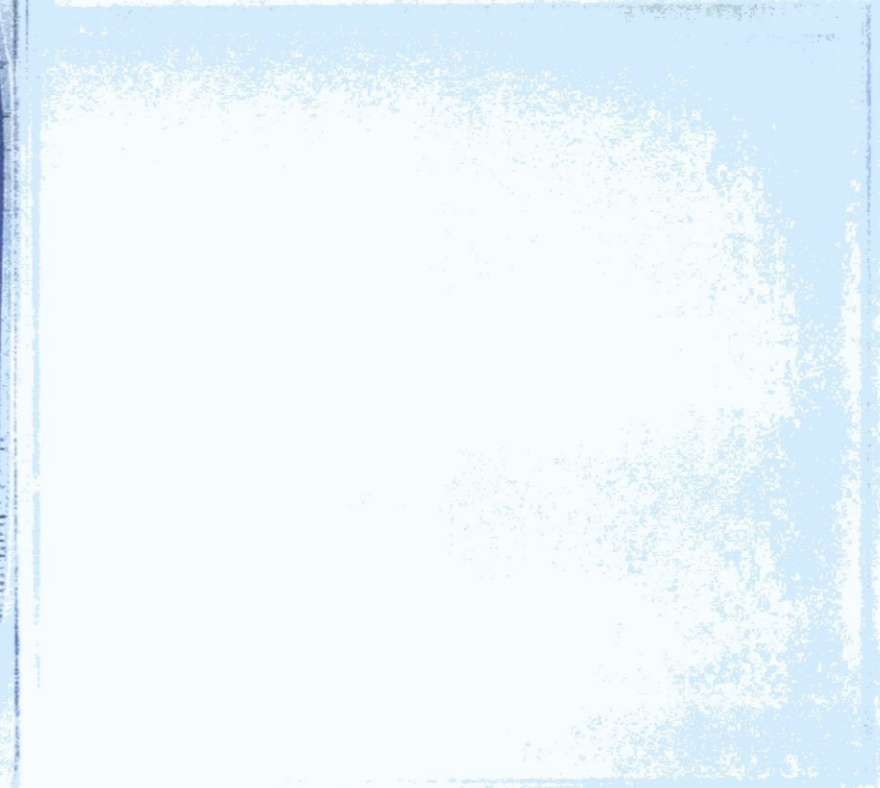
Parking Master Plan

EXTERIOR FINISH LEGEND

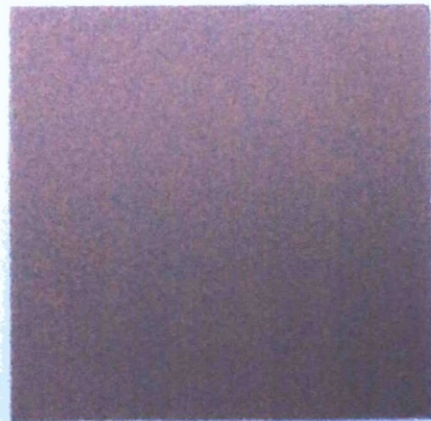
- A** EXTERIOR INSULATION & FINISH SYSTEM (E.I.F.S.): DRYVIT, 'OUTSULATION PLUS MD' SYSTEM, COLOR: SUEDE W/ SANDBLAST NTX FIN. OR EQ.
- B** 3/4" PERFORATED CORRUGATED ALUM W/ 23% OPEN AREA (CENTRIA ECONOLAP, COLOR: SONOMA RED, FLUROPON FIN. OR EQ.)
- C** 8 X 8 X 16 NORMAL WEIGHT C.M.U. RUNNING BOND, W/ CLEAR SEALER (SUPERLITE, TRENDSTONE, COLOR: HOPI SANDSTONE)
- D** CLEAR ANODIZED ALUM STOREFRONT W/ 1" LOW-E, CLEAR INSULATED GLAZING (GUARDIAN GLASS, SNX 62/27 - SHGC 27 - VLT 62% OR EQ.)
- E** CLEAR ANODIZED ALUM GARAGE DOOR W/ CLEAR INSULATED GLAZING W/ 1/2" INSULATED CLEAR GLAZING (OVERHEAD DOOR MODEL #521 OR EQ.)
- F** ALL EXTERIOR PAINTED STEEL (COLUMNS, BEAMS, HOLLOW METAL DOORS & FRAMES, & GATES) TO BE SEMI-GLOSS, DUNN EDWARDS DE6061 RIVER ROCKS OR EQ.
- G** EXTERIOR PAINT (PARAPET COPING, PARAPET LADDER): SEMI-GLOSS DUNN EDWARDS DET627 PEWTER PATTERN OR EQ.



D



E



F



G

EXTERIOR FINISH LEGEND

- A** EXTERIOR INSULATION & FINISH SYSTEM (E.I.F.S.): DRYVIT, 'OUTSULATION PLUS MD' SYSTEM, COLOR: SUEDE W/ SANDBLAST NTX FIN. OR EQ.
- B** 3/4" PERFORATED CORRUGATED ALUM. W/ 23% OPEN AREA (CENTRIA ECONOLAP, COLOR: SONOMA RED, FLUROPON FIN. OR EQ.)
- C** 8 X 8 X 16 NORMAL WEIGHT C.M.U., RUNNING BOND, W/ CLEAR SEALER (SUPERLITE, TRENDSTONE, COLOR: HOPI SANDSTONE)
- D** CLEAR ANODIZED ALUM. STOREFRONT W/ 1" LOW-E, CLEAR INSULATED GLAZING (GUARDIAN GLASS, SNX 62/27 - SHGC .27 / VLT 62% OR EQ.)
- E** CLEAR ANODIZED ALUM. GARAGE DOOR W/ CLEAR INSULATED GLAZING W/ 1/2" INSULATED CLEAR GLAZING (OVERHEAD DOOR MODEL #521 OR EQ.)
- F** ALL EXTERIOR PAINTED STEEL (COLUMNS, BEAMS, HOLLOW METAL DOORS & FRAMES, & GATES) TO BE SEMI-GLOSS, DUNN EDWARDS DE6061 RIVER ROCKS OR EQ.
- G** EXTERIOR PAINT (PARAPET COPING, PARAPET LADDER): SEMI-GLOSS DUNN EDWARDS DET627 PEWTER PATTERN OR EQ.



A



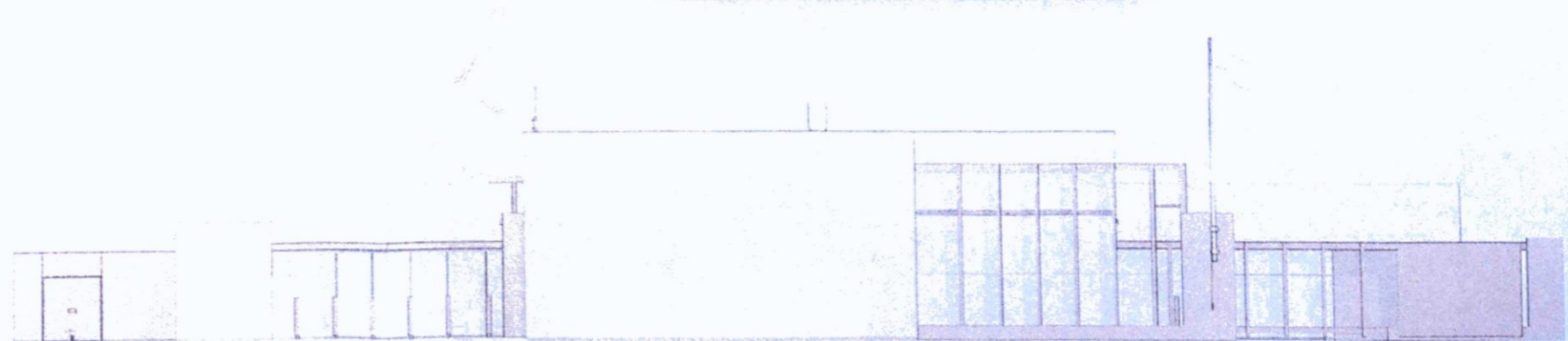
B



C



CITY OF SCOTTSDALE FIRE STATION #603
Exterior Building Color & Material Sample Board 1 of 2



PRELIMINARY PROJECT BUDGET

CATEGORY	ESTIMATED PROJECT COSTS	NOTES / CALCULATIONS
Planning	\$ 0	Studies, Masterplans, Site Development
Design/ CA	\$ 2,067.60	Civil Engineering, Architecture and Construction Management (15% of Construction+Contingency)
Right of Way	\$ 0	Purchase of easements, Right of way or associated property rights. Estimate based on research
Construction	\$ 11,484.00	Construction Estimate
Utilities	\$ 0	Utility design, fees, licenses and construction.
F F & E	\$ 0	Machinery, Equipment and Furnishings
City Fees	\$ 280.00	Water Development, Plan Review, Permitting (2% of Construction + Contingency)
CPM Salaries	\$ 560.00	Direct salary charges from CPM Staff, PMA, PM and Construction Staff, (4% of Construction + Contingency)
WO Credits	\$ 560.00	CIP supported client department staff (6% trans, 4% others of Construction + Contingency)
CPM Allocation	\$ 560.00	CPM admin, staff, equipment etc. (4% of Construction + Contingency)
Public Art	\$ 155.12	1% of the subtotal of all line items above. Amount to be removed with adoption of CIP
Contingency	\$ 2,300.00	20% of construction during planning/concept, 15% at start of construction
TOTAL:	\$ 17,967.00	

PROJECTED FUNDING SURPLUS/(DEFICIT): \$ (17,967)

FUNDING SOURCES

CENTER / NAME	FUNDING AMOUNT
	\$ -
	\$ -
	\$ -
	\$ -
	\$ -
TOTAL FUNDS AVAILABLE	\$ 0

BRIEF PROJECT DESCRIPTION

PM APPROVAL _____

CLIENT DEPARTMENT _____

PPM APPROVAL _____

DRB: Part III, Samples and Models, Item 69

Paint Color Drawdowns

Submittal Response:



Dunn Edwards Paint color DET627 Pewter Patter: Metal Parapet Coping paint finish, to match integrally colored EIFS.

This project does utilize integrally colored EIFS / Stucco – reference Material Samples board.

Reference Exterior Building Color & Material Sample Board, finish note: G

DRB: Part III, Samples and Models, Item 69

Paint Color Drawdowns

Submittal Response:



Dunn Edwards Paint color DE62061 River Rocks: Exterior steel, steel gate, hollow metal door frames, metal doors paint finish. This is also a color match for factory finished exterior perforated aluminum panels.

Reference Exterior Building Color & Material Sample Board, finish note: F