

Final Approved Stamped Plans
Full Size



SITE NAME: PHO_SCOTTSDALE STADIUM-850
7408 E. OSBORN ROAD
SCOTTSDALE, ARIZONA, 85251
CASE #: 17-SA-2018



SITE PHOTO

ZONING APPROVAL STIPULATIONS (17-SA-2018):

- MODIFICATIONS TO THE EXISTING WIRELESS COMMUNICATIONS FACILITY SHALL BE IN CONFORMANCE WITH THE PLANS SUBMITTED BY VERIZON WIRELESS AND YOUNG DESIGN CORP WITH A DATE OF 12/4/2017, AND APPROVED BY CITY STAFF ON 01/26/18
- ALL ANTENNAS, ASSOCIATED RADIO EQUIPMENT, AND MOUNTING HARDWARE SHALL BE PAINTED TO MATCH THE LIGHT TOWER.
- WITH THE FINAL PLANS SUBMITTAL, SUBMIT A COAX WIRING PLAN THAT SHOWS COAX ROUTES BETWEEN THE POLE PORT AND ANTENNAS.
- PRIOR TO ANY CONSTRUCTION ACTIVITIES AT THE STADIUM, THE APPLICANT SHALL CONTACT CHRIS WALSH AT 480-312-2551 TO REVIEW AND HAVE THE CONSTRUCTION SCHEDULE APPROVED.
- NO PERMITS SHALL BE ISSUED FOR THIS WORK UNTIL THE USE FEES AND LATE FEES DUE TO THE CITY OF SCOTTSDALE ARE BROUGHT CURRENT. CONTACT THE CITY'S ACCOUNTING DIVISION AT 480-312-2274 FOR MORE INFORMATION.
- PRIOR TO CONSTRUCTION, THE CONTRACTOR SHALL NOTIFY INSPECTION SERVICES BY CALLING 480-312-5750 TO SCHEDULE A PRE-CONSTRUCTION MEETING.
- OBTAIN PERMITS AS REQUIRED BY THE ONE STOP SHOP.

SHEET INDEX

- T-1 PROJECT INFORMATION AND DATA
- A-1 SITE PLAN
- A-2 ENLARGED SITE PLAN
- A-3 ANTENNA INFORMATION
- A-3.1 EQUIPMENT INFORMATION
- A-4 ELEVATIONS
- A-5 ELEVATIONS

CLIENT

VERIZON WIRELESS
 126 W. GEMINI DR.
 TEMPE, ARIZONA, 85283
 CONTACT: MARCI BRAWLEY
 PHONE: (602) 679-5511

PROPERTY OWNER

CITY OF SCOTTSDALE
 7447 E. INDIAN SCHOOL ROAD, #210
 SCOTTSDALE, ARIZONA, 85251
 CONTACT: ROBERT HULTS
 PHONE: (480) 312-7066

SITE ACQUISITION

COAL CREEK CONSULTING
 2166 E. UNIVERSITY DRIVE, #201
 TEMPE, ARIZONA, 85281
 CONTACT: ADAM ARTHUR
 PHONE: (480) 766-0118

ARCHITECT

YOUNG DESIGN CORP.
 10245 E. VIA LINDA, #211
 SCOTTSDALE, ARIZONA, 85258
 CONTACT: MATTHEW YOUNG
 PHONE: (480) 451-9609

STRUCTURAL CONSULTANT

YOUNG DESIGN CORP.
 10245 E. VIA LINDA, #211
 SCOTTSDALE, ARIZONA, 85258
 CONTACT: MATTHEW YOUNG
 PHONE: (480) 451-9609

PROJECT DATA

LEASEE: VERIZON WIRELESS
 126 W. GEMINI DR.
 TEMPE, ARIZONA, 85283
 ZONING: R-5 & O-S
 APN: 130-24-002-B
 LEASE AREA: 198 S.F. (EXISTING)
 JURISDICTION: CITY OF SCOTTSDALE
 BUILDING CODES: 2015 I.B.C.
 2014 N.E.C.
 2015 I.M.C.
 2015 I.F.C.

PROJECT DESCRIPTION

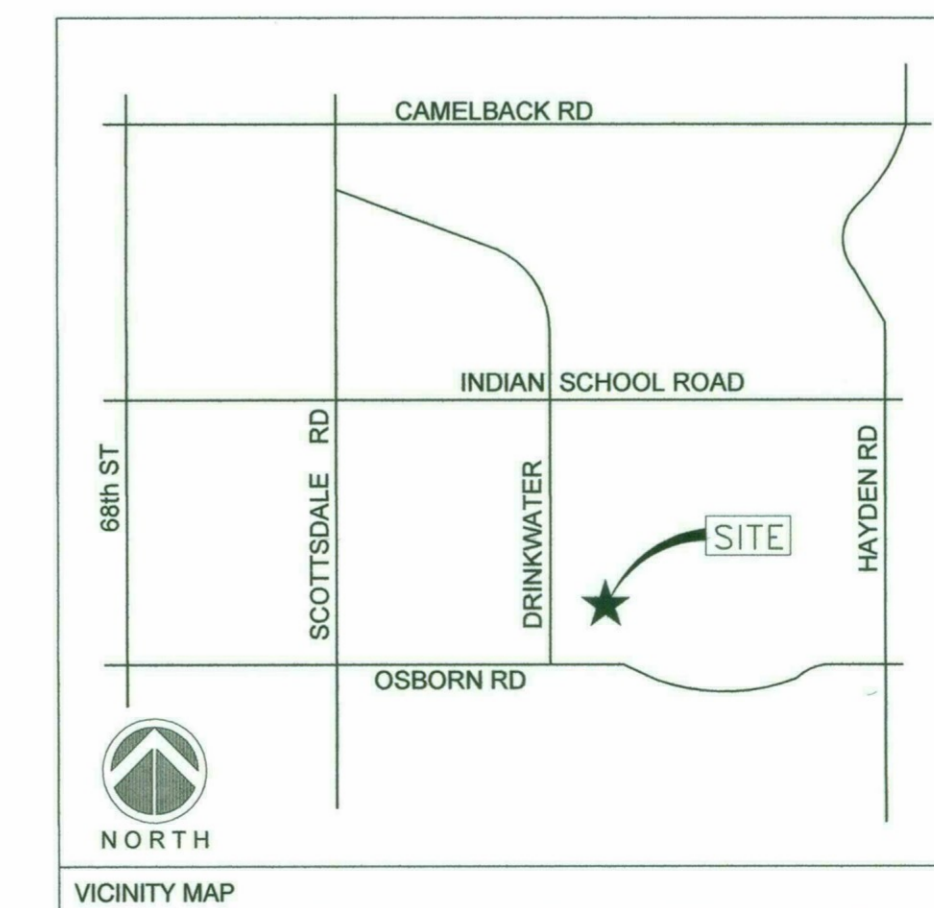
THE PROJECT CONSISTS OF THE ADDITION OF (3) NEW ANTENNAS, AND RELOCATION OF (3) EXISTING ANTENNAS, FOR A TOTAL OF (6) LESSEE ANTENNAS AND ASSOCIATED EQUIPMENT FOR COMPANY'S WIRELESS TELECOMMUNICATIONS NETWORK AT THE EXISTING RAD CENTER. REMOVE EXISTING MOUNTING ASSEMBLY AND INSTALL NEW SPECIFIED MOUNTING KIT. REMOVE (6) EXISTING DIPLEXERS. REMOVE (6) EXISTING 7/8" COAX. RETAIN (6) EXISTING 7/8" COAX, AND INSTALL (2) NEW 1-5/8" 6x12 HYBRID CABLE. PROVIDE FRP CABLE SHROUDS AT EACH ANTENNA. INSTALL (3) NEW RRH-4T4R-B5/B13-320W, (1) PER SECTOR BEHIND ANTENNAS @ POSITION-2. INSTALL (3) NEW RRH-4T4R-B2/B66-320W, (1) PER SECTOR BEHIND ANTENNAS @ POSITION-1. INSTALL (1) NEW 12-PORT NEMA J-BOX (OVP-12) ON THE TOWER, AND (2) NEW J-BOXES (OVP SHELVES) AT THE GROUND LEVEL INSIDE THE EQUIPMENT ROOM. FACILITY IS UNMANNED AND NOT FOR HUMAN HABITATION.
 NOTE: ALL NEW EQUIPMENT INSTALLED ON TOWER SHALL BE PAINTED TO MATCH EXISTING ANTENNAS & POLE.

SITE COORDINATES

LATITUDE: 33° 28' 18.228" N
 LONGITUDE: 111° 55' 13.235" W
 GROUND ELEVATION: 1245.9' A.M.S.L.

SITE DIRECTIONS

FROM TEMPE OFFICE, TAKE EASTBOUND US-60 AND MERGE ONTO NORTHBOUND AZ LOOP-101, TAKE THE EXIT FOR INDIAN SCHOOL ROAD & TURN LEFT (WEST), THEN TURN LEFT (SOUTH) ONTO DRINKWATER BLVD. THEN TURN LEFT (EAST) ONTO OSBORN ROAD, SITE WILL BE ON THE LEFT (NORTH) SIDE AT THE STADIUM.



CLIENT

verizon
 126 W. GEMINI DR.
 TEMPE, AZ 85283

INTERNAL REVIEW _____ **DATE** _____

CONSTRUCTION SIGNATURE _____

RF SIGNATURE _____

FACILITIES SIGNATURE _____

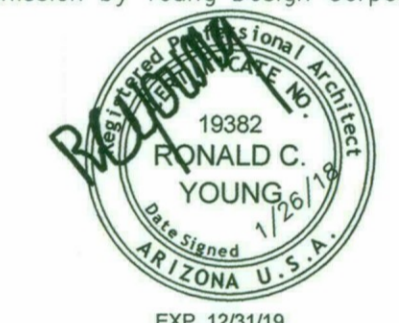
REAL ESTATE SIGNATURE _____

PLANS PREPARED BY



architecture / project management
 10245 E. Via Linda, Scottsdale, AZ 85258
 ph: 480 451 9609 fax: 480 451 9608
 e mail: corporate@ydcoffice.com

SEAL
 This drawing is copyrighted and the property of Young Design Corporation (YDC) & produced solely by YDC and affiliates. reproduction or use of this drawing and/or the information contained hereon is forbidden without written permission by Young Design Corporation.



19382
 RONALD C. YOUNG
 State of Arizona U.S.A.
 EXP. 12/31/19

PRELIMINARY UNLESS SIGNED

NO. _____ **DATE** _____ **DESCRIPTION** _____

NO.	DATE	DESCRIPTION
1	01/26/18	FINAL ISSUE

ARCHITECTS JOB NO.

YDC-7963

PROJECT INFORMATION

PHO_SCOTTSDALE STADIUM - 850 SMR

7408 E. OSBORN ROAD
 SCOTTSDALE, ARIZONA, 85251

7408 E. OSBORN ROAD
 SCOTTSDALE, ARIZONA, 85251

7408 E. OSBORN ROAD
 SCOTTSDALE, ARIZONA, 85251

SHEET TITLE

PROJECT INFORMATION AND DATA

JURISDICTION APPROVAL

APPROVED
 FINAL PLANS PLANNING
 11-27-18
 DATE APPROVED BY KN

APPROVED BY

APPROVED BY

APPROVED BY

APPROVED BY

APPROVED BY

APPROVED BY

APPROVED BY

APPROVED BY

APPROVED BY

APPROVED BY

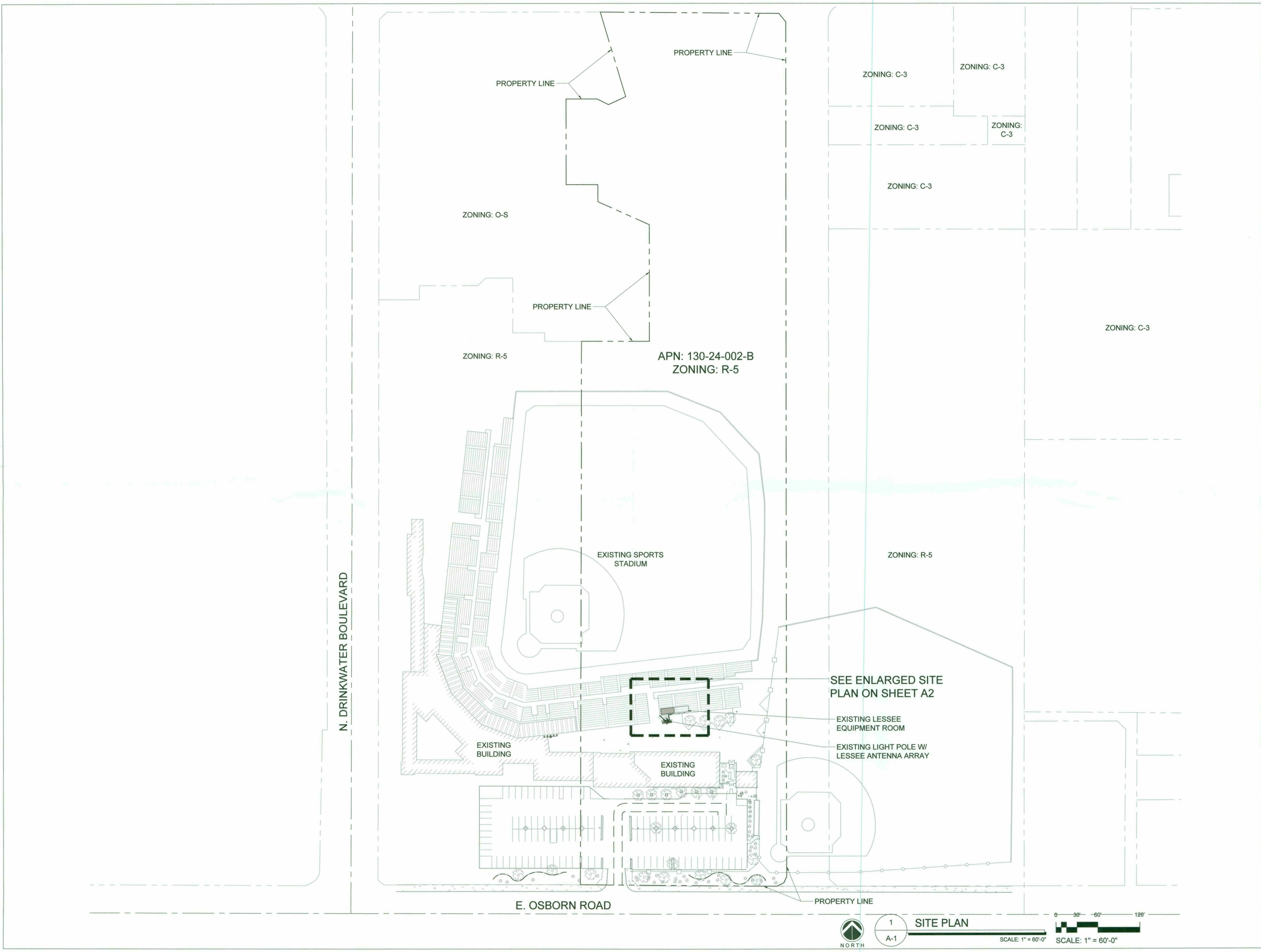
SHEET NUMBER

T-1

2/7/18 1st CBM

PLANNING

6040-18



CLIENT

verizon

126 W. GEMINI DR.
TEMPE, AZ 85283

INTERNAL REVIEW	DATE
CONSTRUCTION SIGNATURE	
RF SIGNATURE	
FACILITIES SIGNATURE	
REAL ESTATE SIGNATURE	

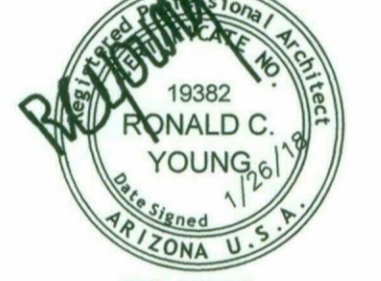
PLANS PREPARED BY

Young design corp

architecture / project management
10245 E. Via Linda, Scottsdale, AZ 85258
ph: 480 451 9609 fax: 480 451 9608
e mail: corporate@ydcoffice.com

SEAL

This drawing is copyrighted and the property of Young Design Corporation (YDC) & produced solely by YDC and affiliates. reproduction or use of this drawing and/or the information contained hereon is forbidden without written permission by Young Design Corporation.



THIS DOCUMENT CONTAINS AN ELECTRONIC SIGNATURE PURSUANT TO A.R.S. TITLE 41 AND TITLE 44. IT IS A VIOLATION FOR ANY PERSON, UNLESS UNDER THE DIRECT SUPERVISION OF THE REGISTRANT, TO MODIFY THIS DOCUMENT IN ANY WAY.

PRELIMINARY UNLESS SIGNED

NO.	DATE	DESCRIPTION
1	01/26/18	FINAL ISSUE

ARCHITECTS JOB NO.
YDC-7963

PROJECT INFORMATION

PHO SCOTTSDALE STADIUM - 850 SMR

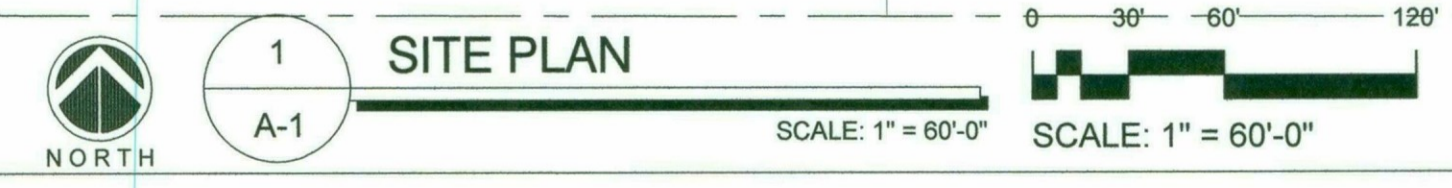
7408 E. OSBORN ROAD
SCOTTSDALE, ARIZONA, 85251

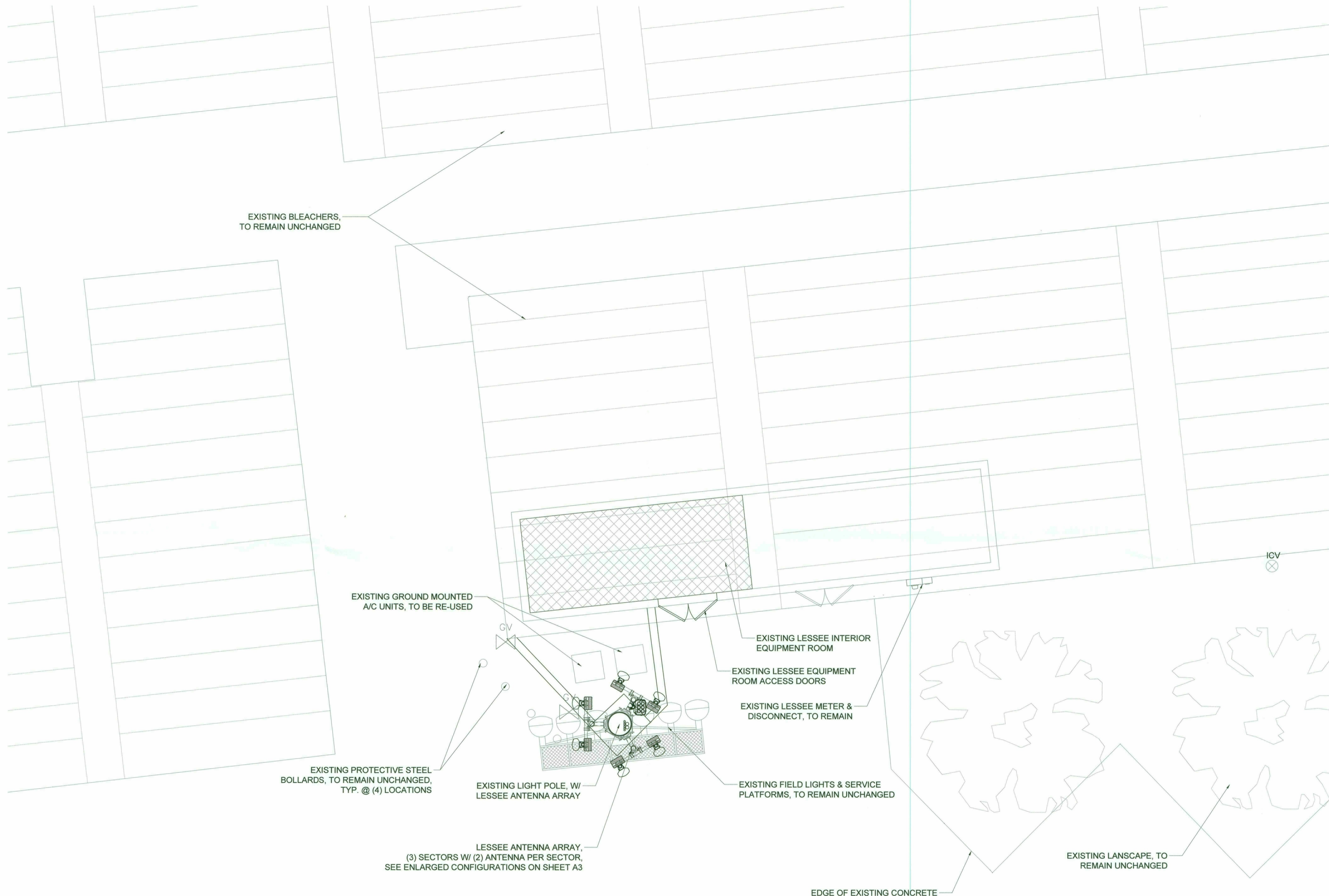
SHEET TITLE
SITE PLAN

JURISDICTION APPROVAL

APPROVED
FINAL PLANS PLANNING
11-27-18 KN
DATE APPROVED BY

SHEET NUMBER
A-1





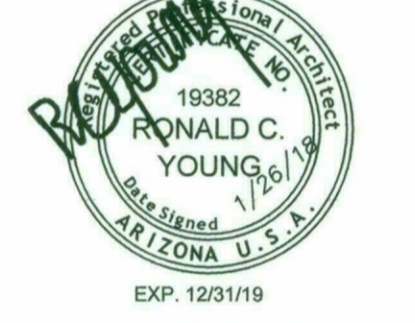
CLIENT

verizon
 126 W. GEMINI DR.
 TEMPE, AZ 85283

INTERNAL REVIEW	DATE
CONSTRUCTION SIGNATURE	
RF SIGNATURE	
FACILITIES SIGNATURE	
REAL ESTATE SIGNATURE	

PLANS PREPARED BY
Young design corp
 architecture / project management
 10245 E. Via Linda, Scottsdale, AZ 85258
 ph: 480 451 9609 fax: 480 451 9608
 e mail: corporate@ydcoffice.com

SEAL
 This drawing is copyrighted and the property of Young Design Corporation (YDC) & produced solely by YDC and affiliates. reproduction or use of this drawing and/or the information contained hereon is forbidden without written permission by Young Design Corporation.



THIS DOCUMENT CONTAINS AN ELECTRONIC SIGNATURE PURSUANT TO A.R.S. TITLE 41 AND TITLE 44. IT IS A VIOLATION FOR ANY PERSON, UNLESS UNDER THE DIRECT SUPERVISION OF THE REGISTRANT, TO MODIFY THIS DOCUMENT IN ANY WAY.

PRELIMINARY UNLESS SIGNED

NO.	DATE	DESCRIPTION
1	01/26/18	FINAL ISSUE

ARCHITECTS JOB NO.
YDC-7963

PROJECT INFORMATION
PHO SCOTTSDALE STADIUM - 850 SMR
 7408 E. OSBORN ROAD
 SCOTTSDALE, ARIZONA, 85251

SHEET TITLE
ENLARGED SITE PLAN

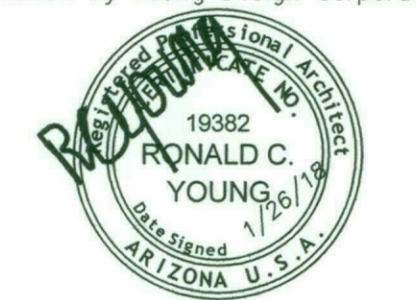
JURISDICTION APPROVAL
APPROVED
FINAL PLANS PLANNING
 11-27-18 KN
 DATE APPROVED BY

SHEET NUMBER
A-2

INTERNAL REVIEW	DATE
CONSTRUCTION SIGNATURE	
RF SIGNATURE	
FACILITIES SIGNATURE	
REAL ESTATE SIGNATURE	

PLANS PREPARED BY

 architecture / project management
 10245 E. Via Linda, Scottsdale, AZ 85258
 ph: 480 451 9609 fax: 480 451 9608
 e mail: corporate@ydcoffice.com

SEAL
 This drawing is copyrighted and the property of Young Design Corporation (YDC) & produced solely by YDC and affiliates. Reproduction or use of this drawing and/or the information contained hereon is forbidden without written permission by Young Design Corporation.

 EXP. 12/31/19
 THIS DOCUMENT CONTAINS AN ELECTRONIC SIGNATURE PURSUANT TO A.R.S. TITLE 41 AND TITLE 44. IT IS A VIOLATION FOR ANY PERSON, UNLESS UNDER THE DIRECT SUPERVISION OF THE REGISTRANT, TO MODIFY THIS DOCUMENT IN ANY WAY.
 PRELIMINARY UNLESS SIGNED

NO.	DATE	DESCRIPTION
1	01/26/18	FINAL ISSUE

ARCHITECTS JOB NO.
YDC-7963

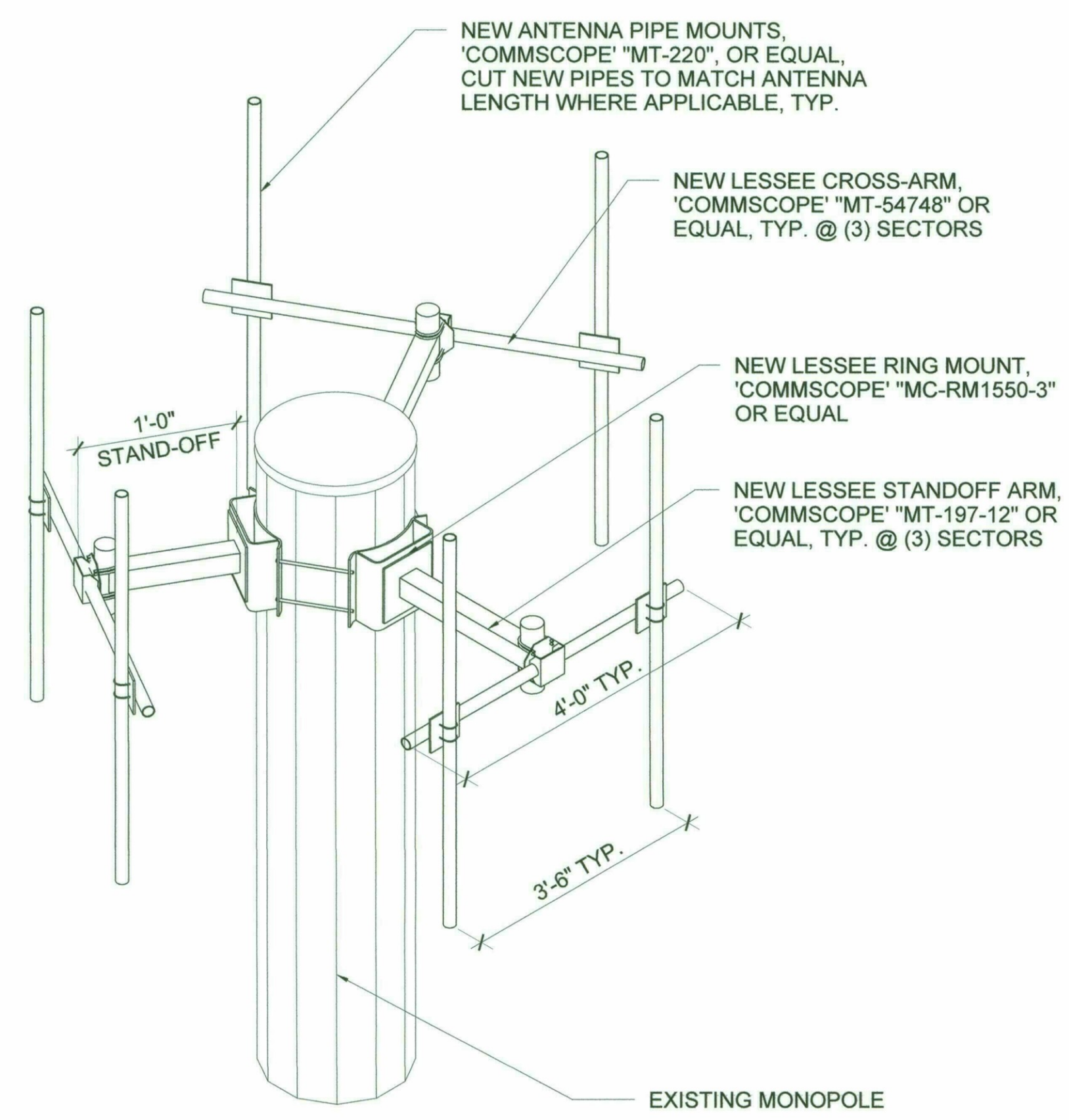
PROJECT INFORMATION
PHO_SCOTTSDALE STADIUM - 850 SMR
 7408 E. OSBORN ROAD
 SCOTTSDALE, ARIZONA, 85251

SHEET TITLE
ANTENNA INFORMATION

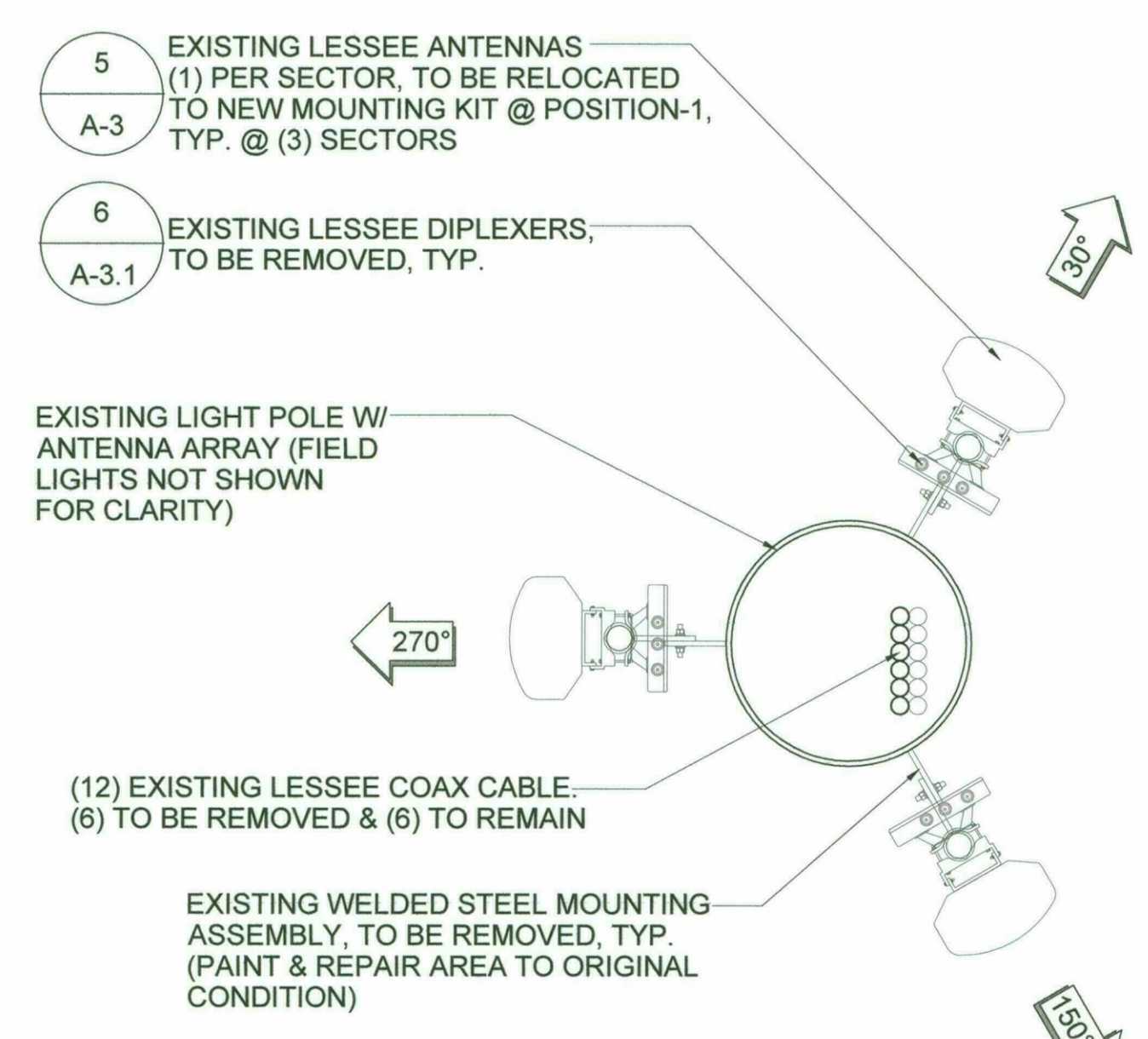
JURISDICTION APPROVAL

 APPROVED FINAL PLANS PLANNING
 11-27-18
 APPROVED BY

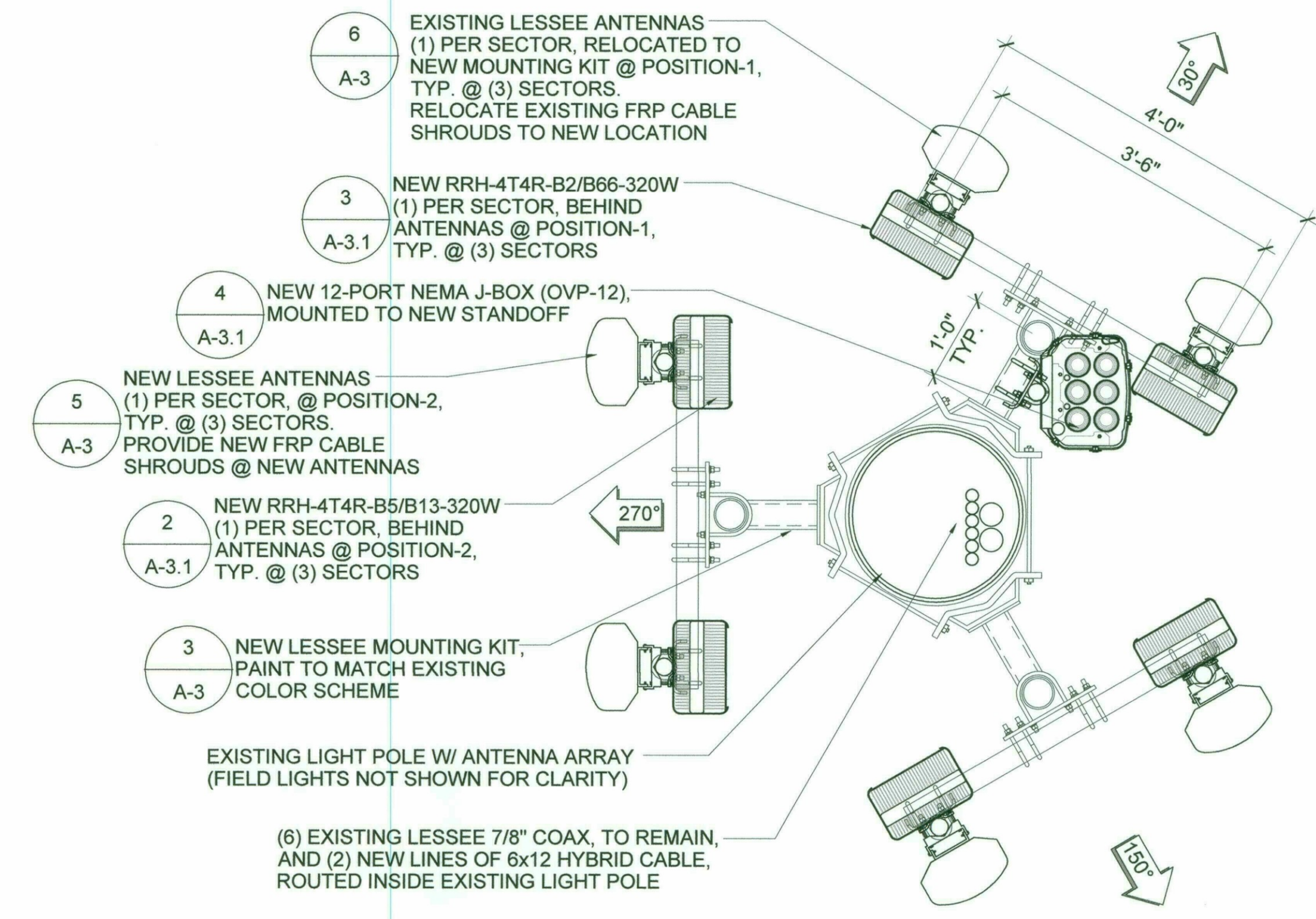
SHEET NUMBER
A-3



3 ANTENNA MOUNTING
 SCALE: NTS



2 EXISTING ANTENNA LAYOUT
 SCALE: 1/2" = 1'-0"



1 NEW ANTENNA LAYOUT
 SCALE: 1/2" = 1'-0"

MECHANICAL DOWN TILT:
 ALPHA SECTOR: ANTENNA 1: 0°, ANTENNA 2: 0°
 BETA SECTOR: ANTENNA 1: 0°, ANTENNA 2: 0°
 GAMMA SECTOR: ANTENNA 1: 0°, ANTENNA 2: 0°

*IT SHALL BE THE CONTRACTORS RESPONSIBILITY TO VERIFY DOWN TILT INFORMATION DEPICTED HEREIN WITH RF DEPARTMENT PRIOR TO INSTALLING ANTENNAS.

NOTE:
 ALL AZIMUTHS ARE SHOWN RELATIVE TO TRUE NORTH, UNLESS NOTED OTHERWISE

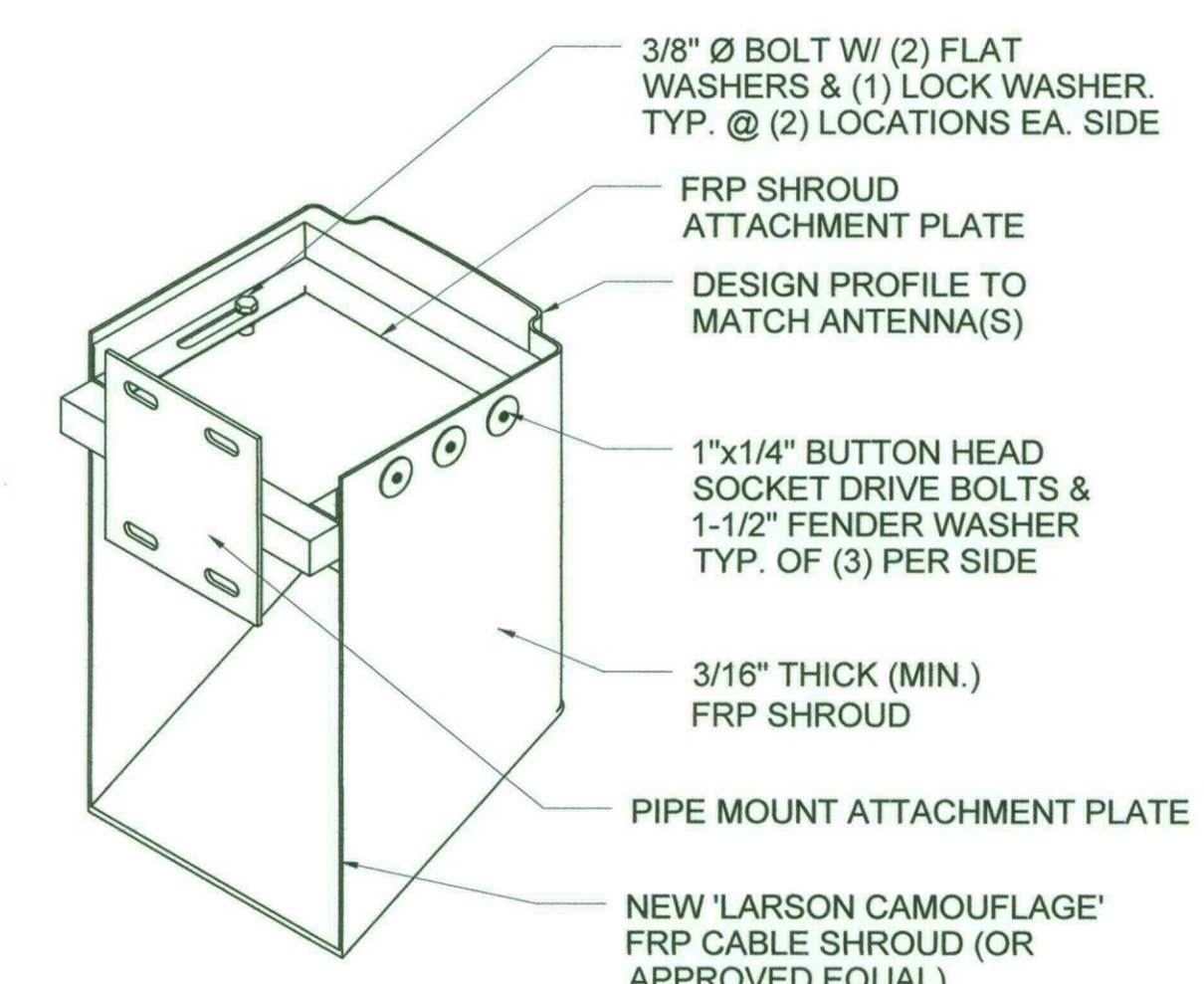
*IT SHALL BE THE CONTRACTORS RESPONSIBILITY TO VERIFY AZIMUTHS DEPICTED HEREIN WITH RF DEPARTMENT PRIOR TO INSTALLING ANTENNAS.

NOTE:
 ALL NEW EQUIPMENT INSTALLED ON TOWER SHALL BE PAINTED TO MATCH EXISTING ANTENNAS & POLE.

COAXIAL CABLE TABLE

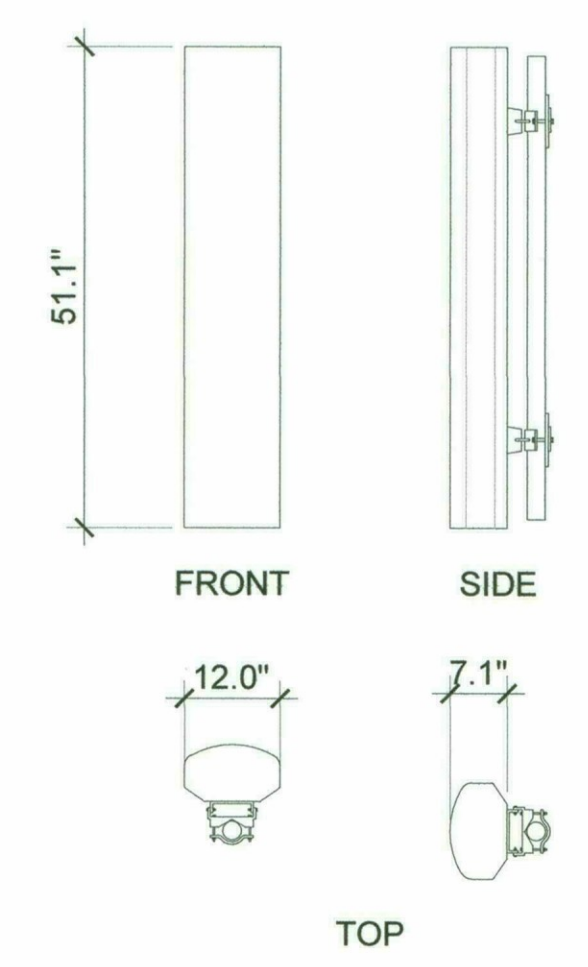
SECTOR	AZIMUTH	CENTERLINE	QTY.	SIZE	TYPE
ALPHA	30°	55'-6"	2	7/8"	AVA5-50
BETA	150°	55'-6"	2	7/8"	AVA5-50
GAMMA	270°	55'-6"	2	7/8"	AVA5-50
N/A	N/A	55'-6"	2	1-5/8"	6x12 HYBRID

4 COAXIAL CABLE TABLE
 SCALE: NTS

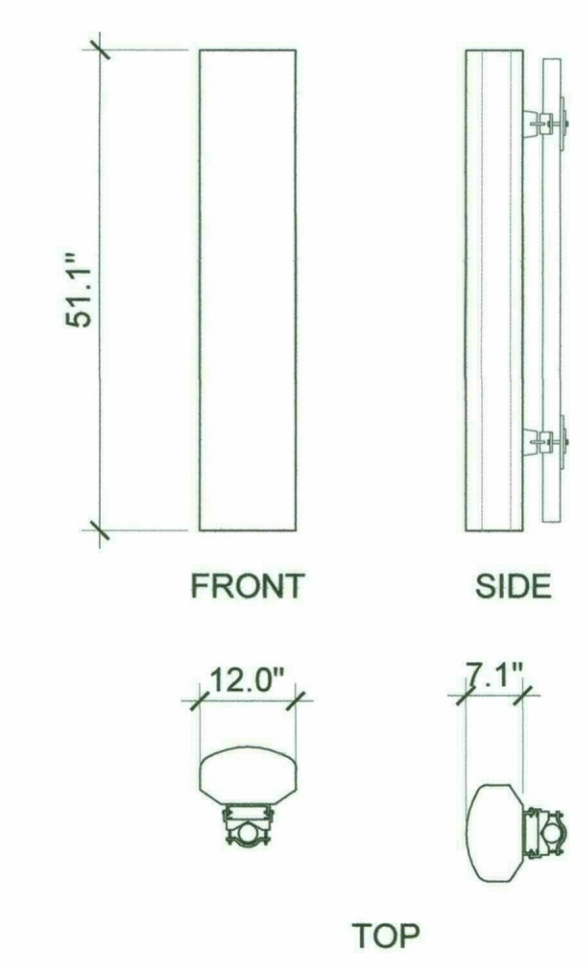


NOTES:
 1. ACTUAL SHROUD GEOMETRY IS ANTENNA DEPENDANT.
 2. MOUNTING FIXTURE GEOMETRY IS ADJUSTABLE BASED ON ANTENNA & MOUNTING CONFIGURATION.
 3. PAINT NEW SHROUDS TO MATCH ANTENNAS & POLE.

7 FRP CABLE SHROUD
 SCALE: N.T.S.



6 EXISTING ANTENNA(S)
 TO REMAIN
 SCALE: N.T.S.



5 NEW ANTENNA(S)
 SCALE: N.T.S.

CLIENT



126 W. GEMINI DR.
TEMPE, AZ 85283

INTERNAL REVIEW _____ DATE _____

CONSTRUCTION SIGNATURE _____

RF SIGNATURE _____

FACILITIES SIGNATURE _____

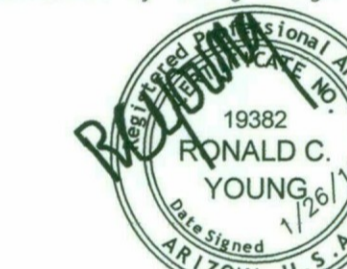
REAL ESTATE SIGNATURE _____

PLANS PREPARED BY



architecture / project management
10245 E. Via Linda, Scottsdale, AZ 85258
ph: 480 451 9609 fax: 480 451 9608
e mail: corporate@ydcoffice.com

SEAL
This drawing is copyrighted and the property of Young Design Corporation (YDC) & produced solely by YDC and affiliates. Reproduction or use of this drawing and/or the information contained herein is forbidden without written permission by Young Design Corporation.



THIS DOCUMENT CONTAINS AN ELECTRONIC SIGNATURE PURSUANT TO A.R.S. TITLE 41 AND TITLE 44. IT IS A VIOLATION FOR ANY PERSON, UNLESS UNDER THE DIRECT SUPERVISION OF THE REGISTRANT, TO MODIFY THIS DOCUMENT IN ANY WAY.

PRELIMINARY UNLESS SIGNED

NO. DATE DESCRIPTION

1 01/26/18 FINAL ISSUE

ARCHITECTS JOB NO.
YDC-7963

PROJECT INFORMATION

PHO SCOTTSDALE
STADIUM - 850 SMR

7408 E. OSBORN ROAD
SCOTTSDALE, ARIZONA, 85251

SHEET TITLE

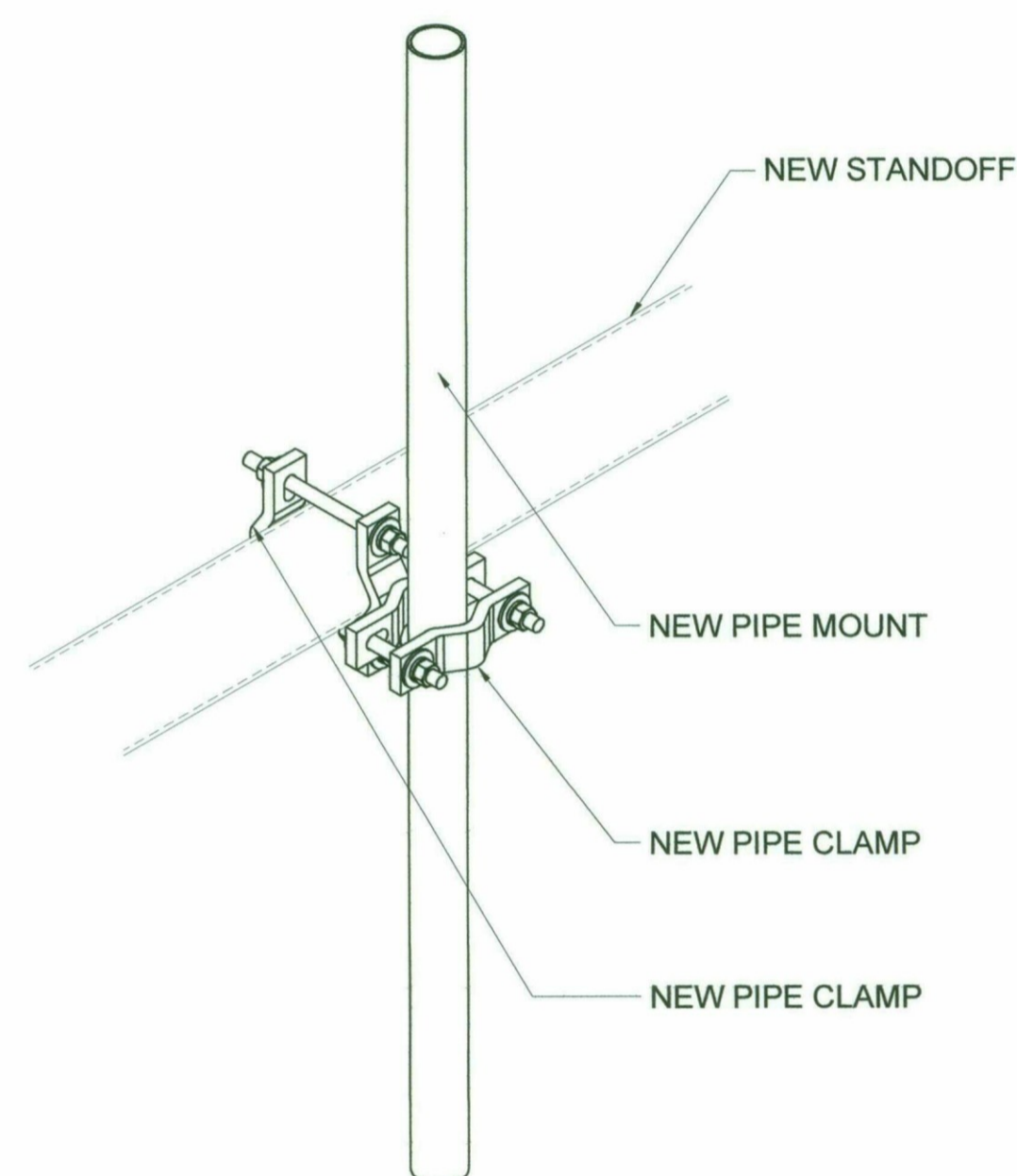
EQUIPMENT INFORMATION

JURISDICTION APPROVAL

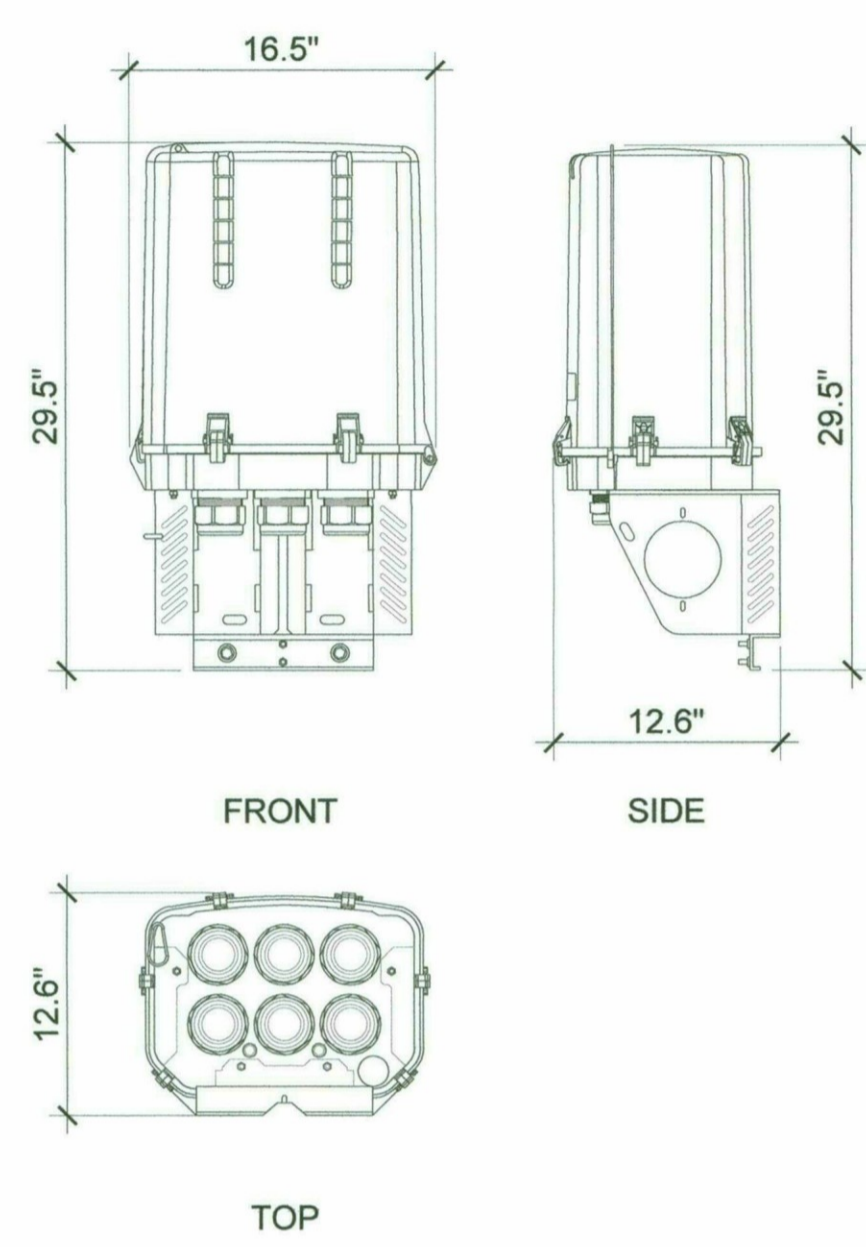
APPROVED
FINAL PLANS PLANNING
11-27-18 KN
DATE APPROVED BY

SHEET NUMBER

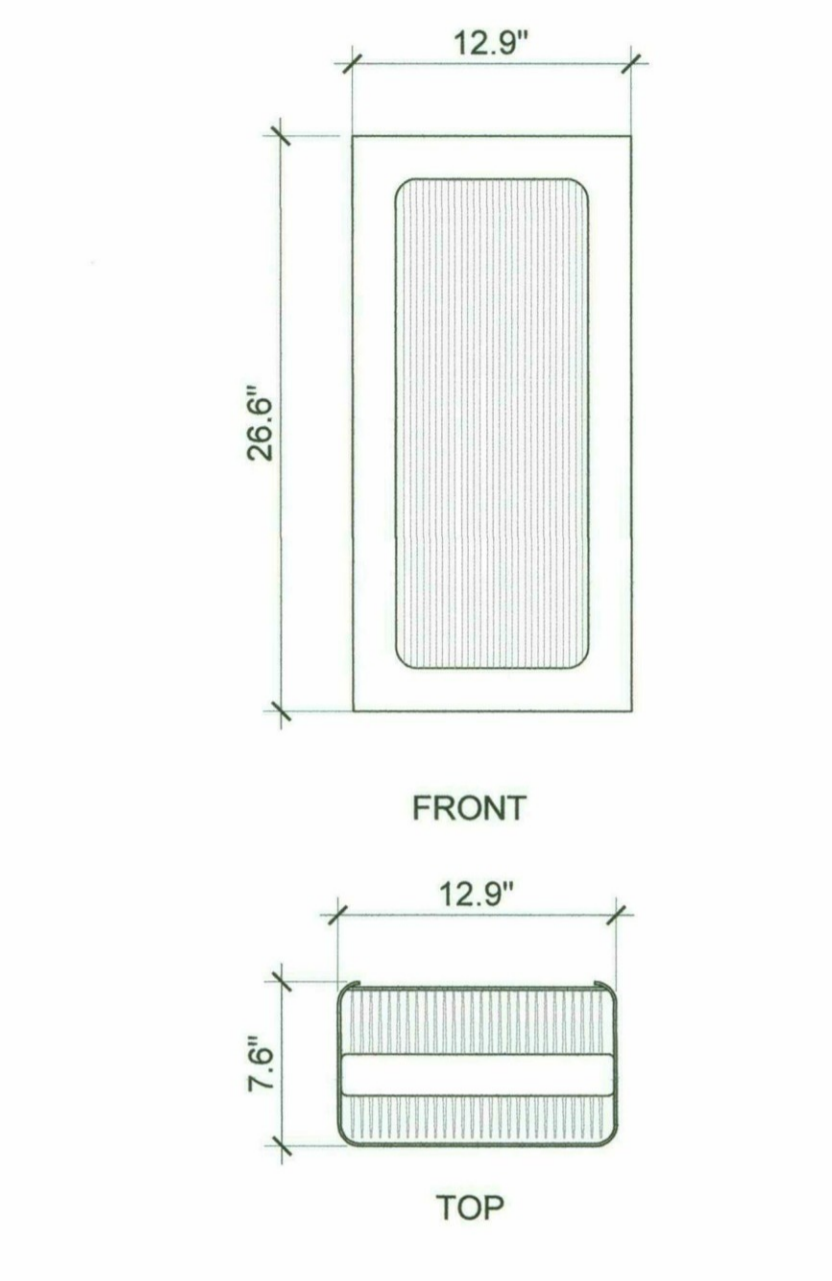
A-3.1



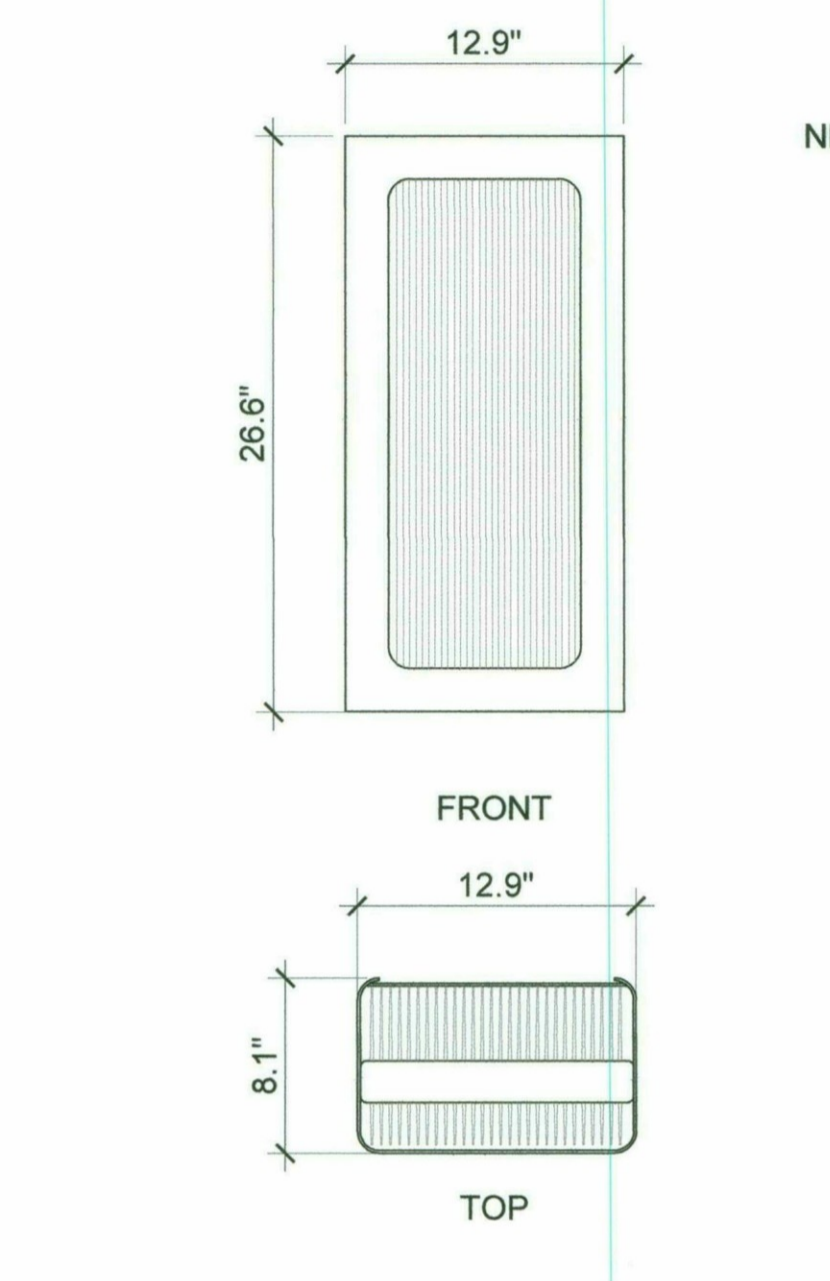
5 J-BOX MOUNTING
A-3.1 SCALE: N.T.S.



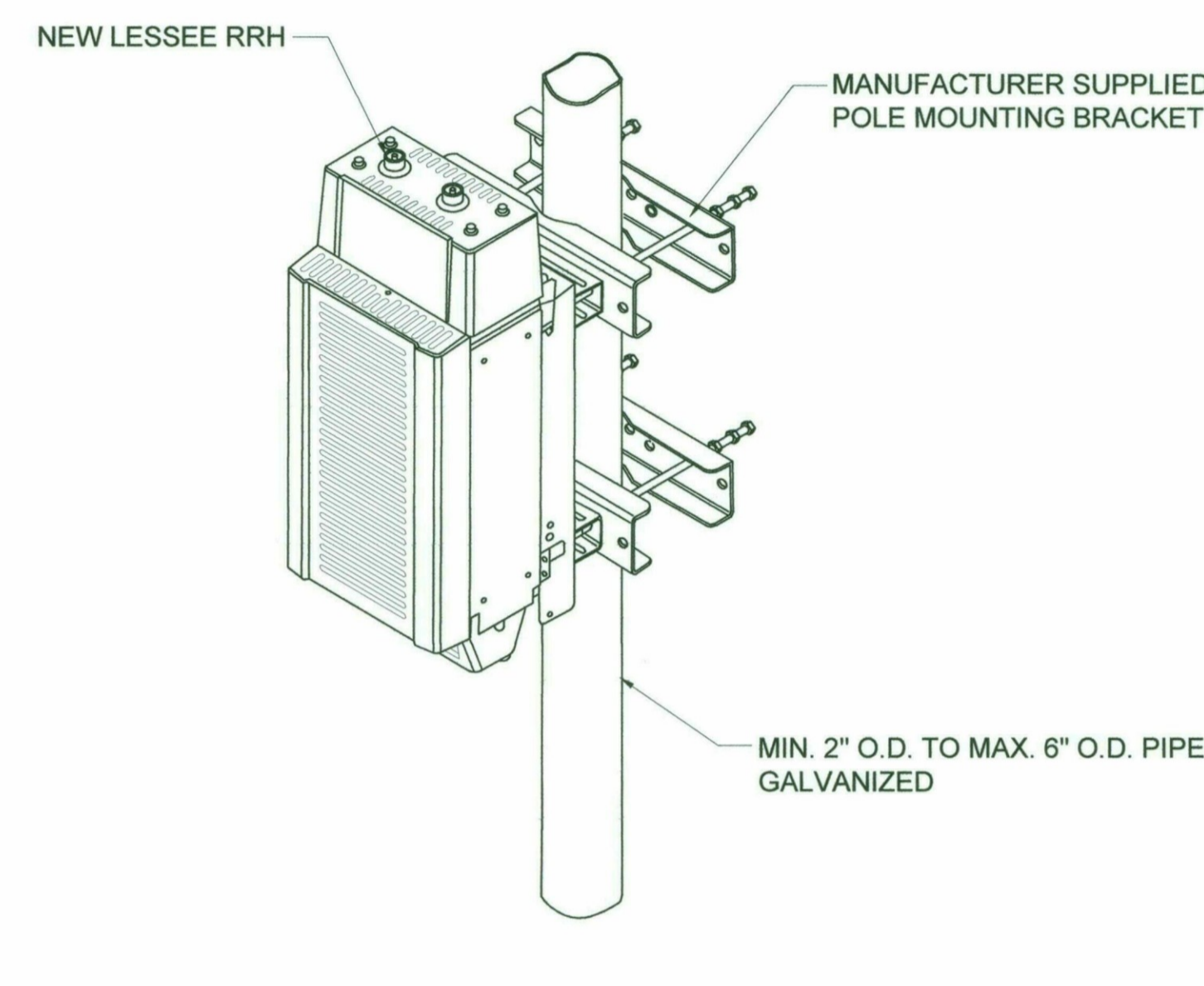
4 12-PORT J-BOX (OVP-12)
A-3.1 SCALE: N.T.S.



3 B2/B66 4T4R RRH
A-3.1 SCALE: N.T.S.

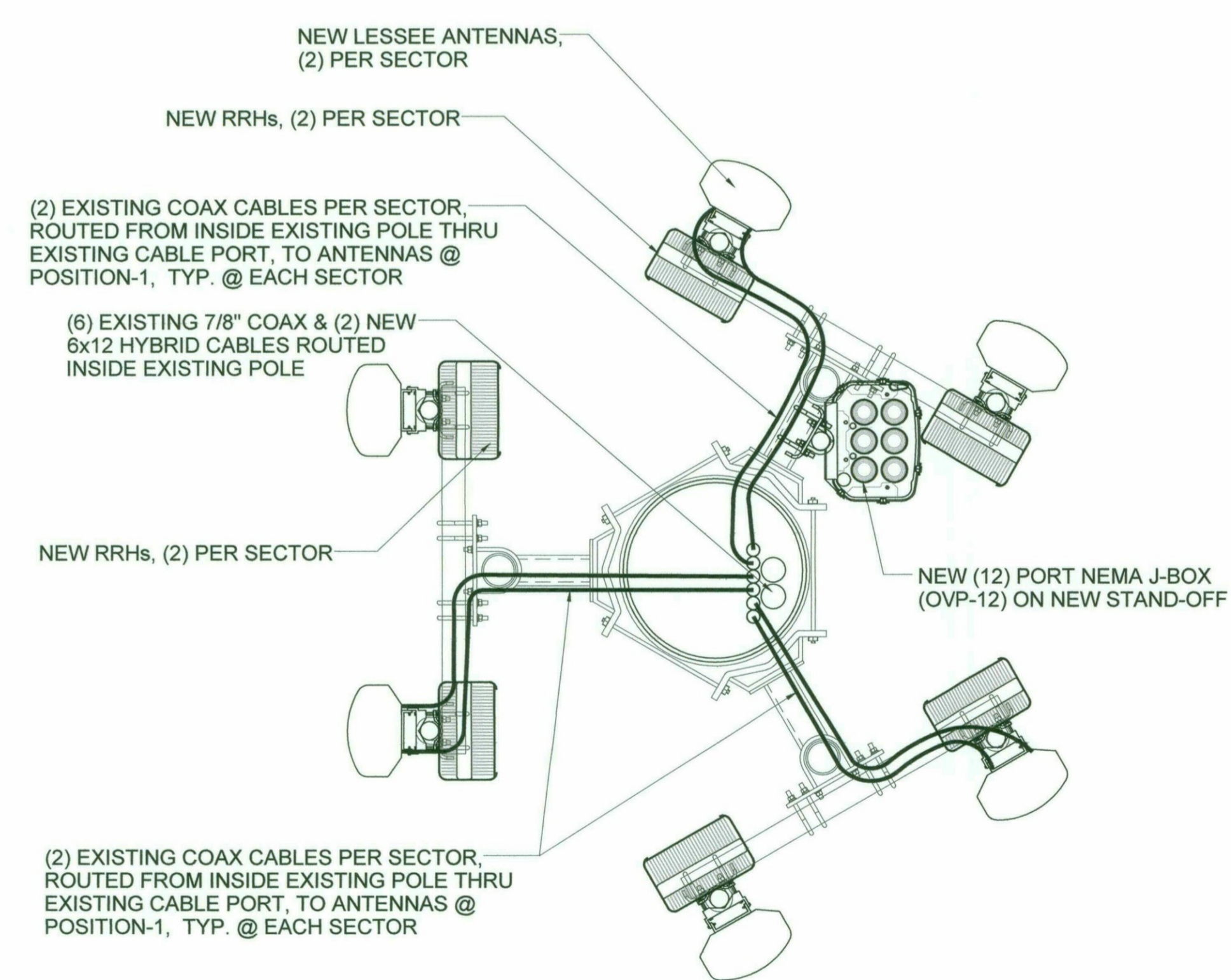


2 B5/B13 4T4R RRH
A-3.1 SCALE: N.T.S.

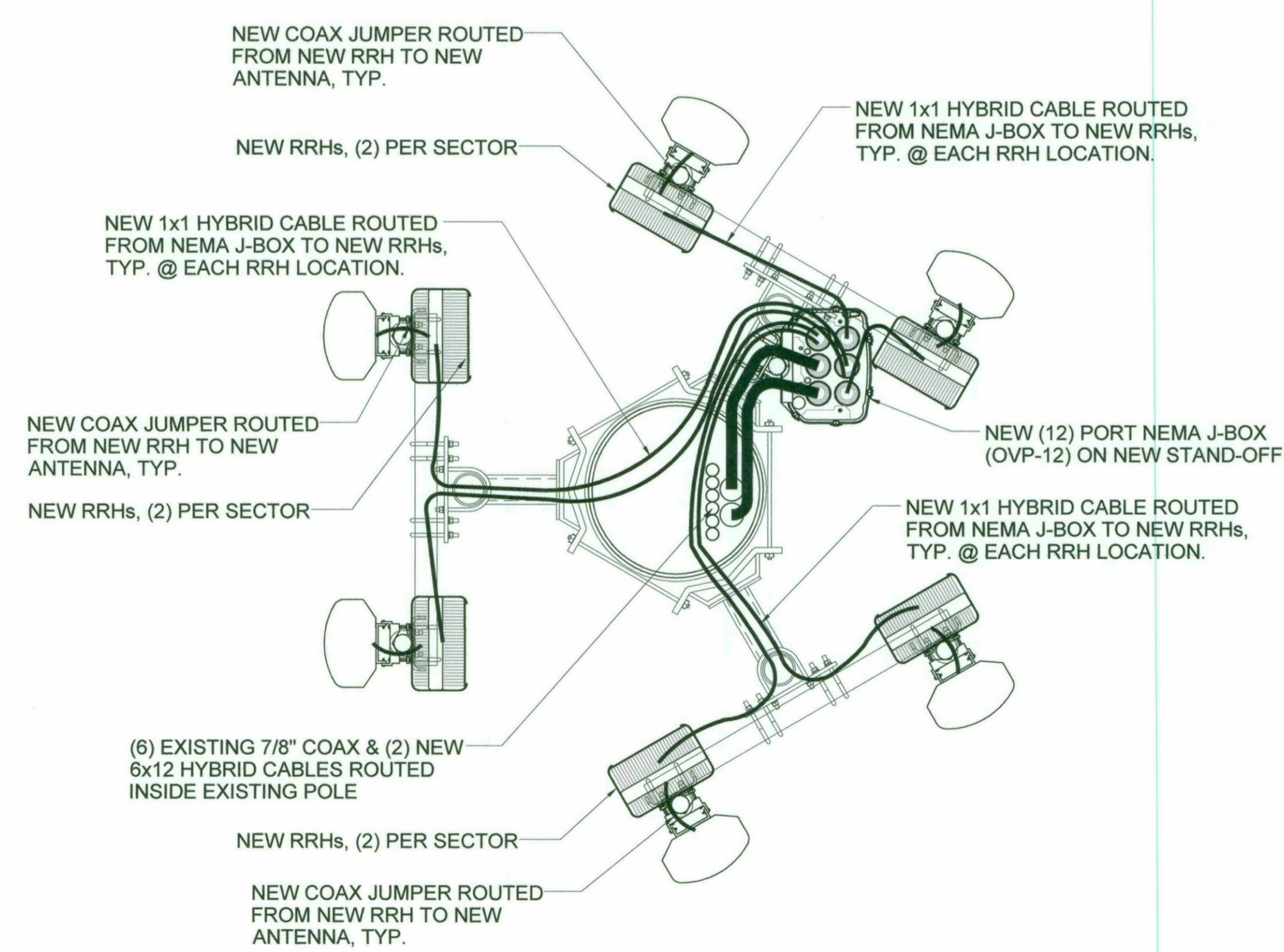


1 RRH MOUNTING
A-3.1 SCALE: N.T.S.

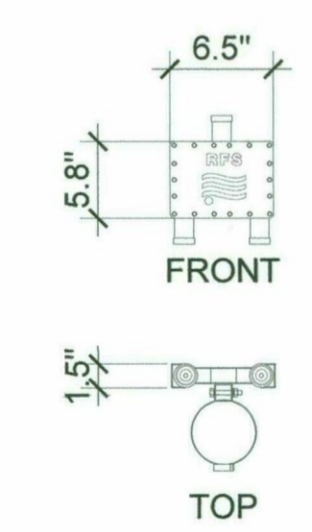
NOTE:
ALL NEW EQUIPMENT INSTALLED ON TOWER SHALL BE PAINTED TO MATCH EXISTING ANTENNAS & TOWER



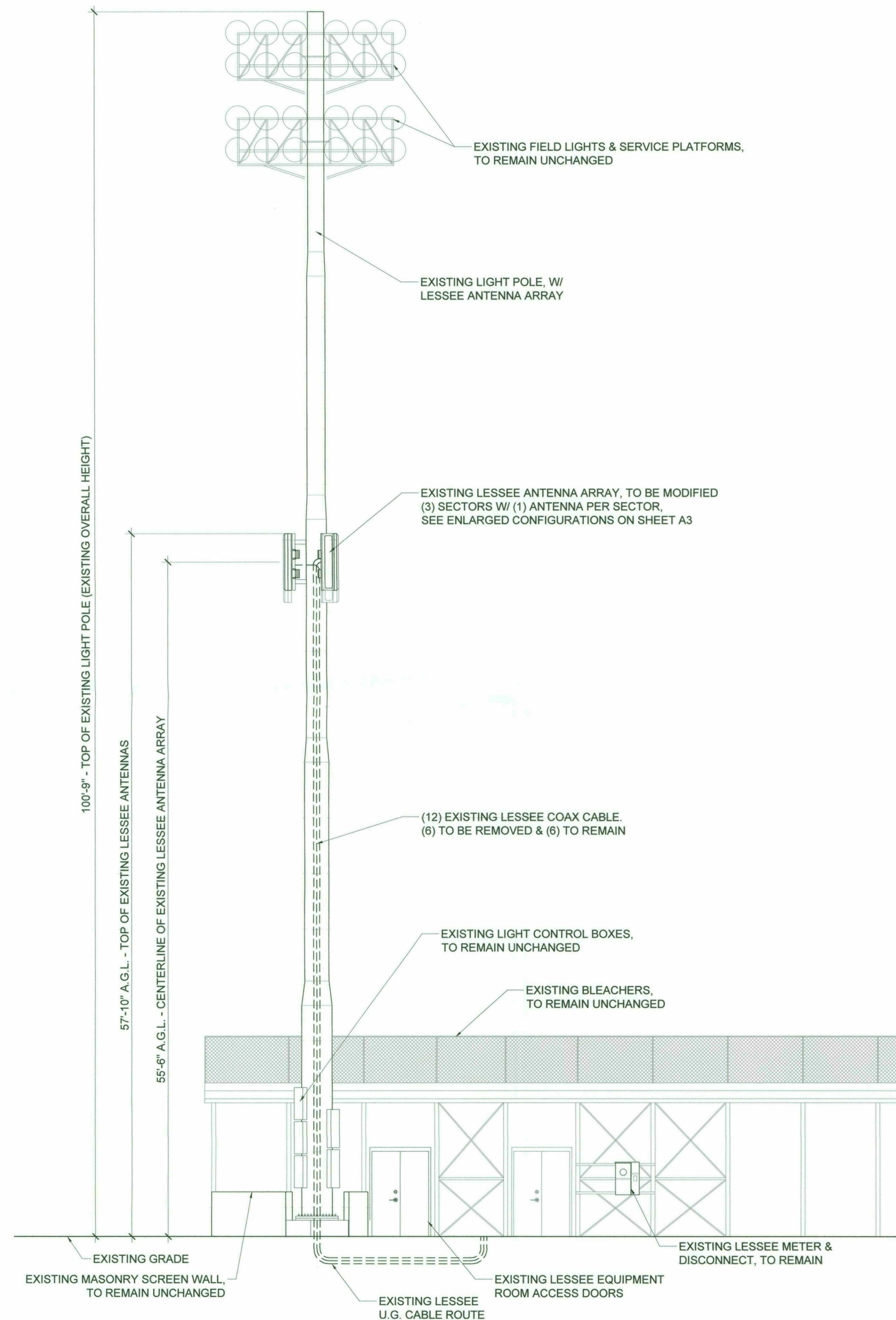
8 COAX CABLE DISTRIBUTION
A-3.1 SCALE: N.T.S.



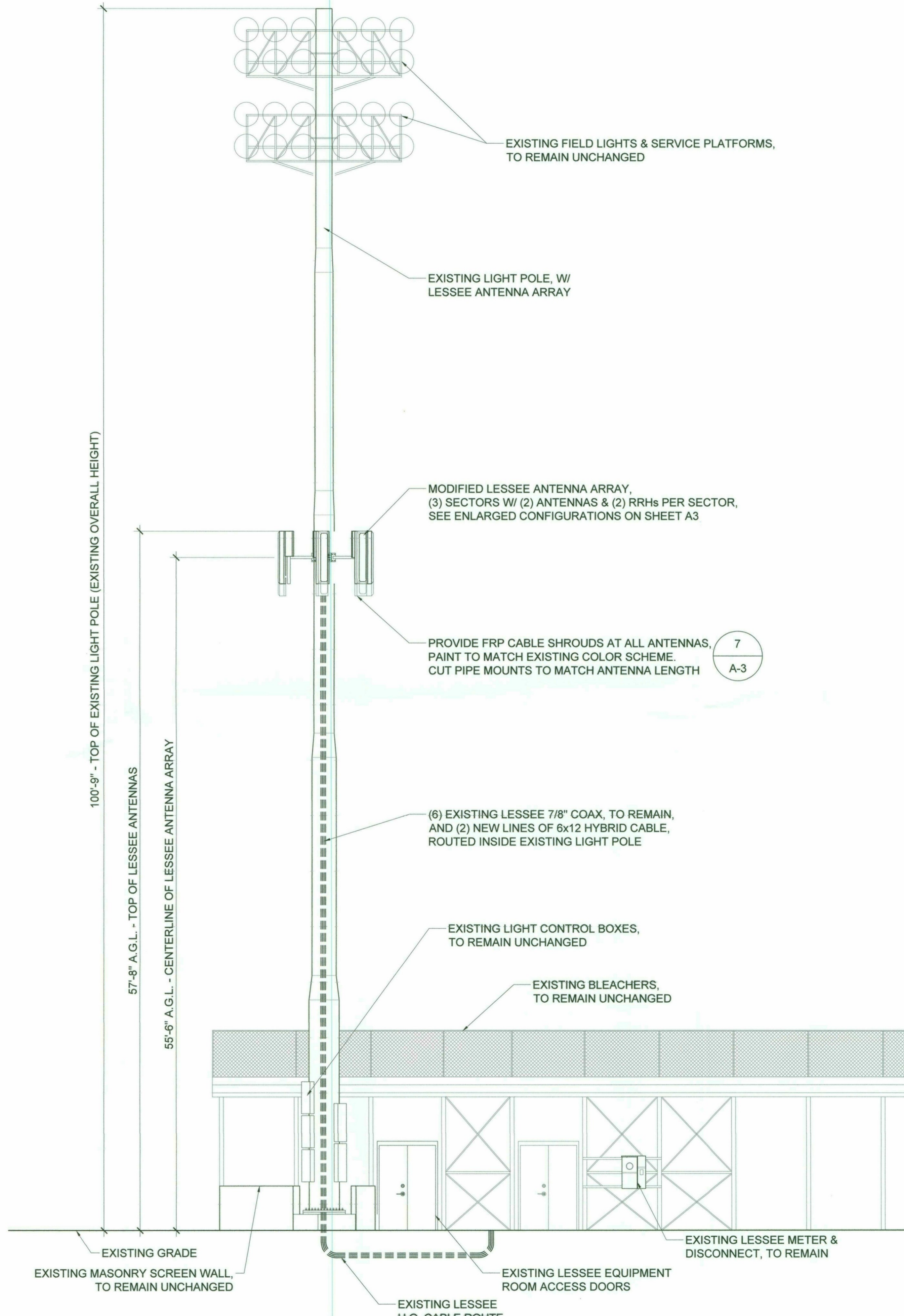
7 HYBRID CABLE DISTRIBUTION
A-3.1 SCALE: N.T.S.



6 EXISTING DIPLEXER
A-3.1 TO BE REMOVED SCALE: N.T.S.



2 EXISTING SOUTH ELEVATION
 SCALE: 1/4" = 1'-0"



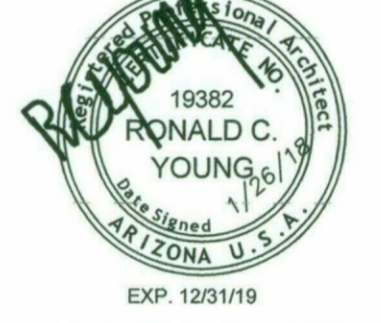
1 NEW SOUTH ELEVATION
 SCALE: 1/4" = 1'-0"

CLIENT
verizon
 126 W. GEMINI DR.
 TEMPE, AZ 85283

INTERNAL REVIEW _____ DATE _____
 CONSTRUCTION SIGNATURE _____
 RF SIGNATURE _____
 FACILITIES SIGNATURE _____
 REAL ESTATE SIGNATURE _____

PLANS PREPARED BY
Young design corp
 architecture / project management
 10245 E. Via Linda, Scottsdale, AZ 85258
 ph: 480 451 9609 fax: 480 451 9608
 e mail: corporate@ydcoffice.com

SEAL
 This drawing is copyrighted and the property of Young Design Corporation (YDC) & produced solely by YDC and affiliates. reproduction or use of this drawing and/or the information contained hereon is forbidden without written permission by Young Design Corporation.



THIS DOCUMENT CONTAINS AN ELECTRONIC SIGNATURE PURSUANT TO A.R.S. TITLE 41 AND TITLE 44. IT IS A VIOLATION FOR ANY PERSON, UNLESS UNDER THE DIRECT SUPERVISION OF THE REGISTRANT, TO MODIFY THIS DOCUMENT IN ANY WAY.
 PRELIMINARY UNLESS SIGNED

NO.	DATE	DESCRIPTION
1	01/26/18	FINAL ISSUE

ARCHITECTS JOB NO.
 YDC-7963

PROJECT INFORMATION
PHO SCOTTSDALE STADIUM - 850 SMR
 7408 E. OSBORN ROAD
 SCOTTSDALE, ARIZONA, 85251

SHEET TITLE
ELEVATIONS

JURISDICTION APPROVAL
APPROVED
 FINAL PLANS PLANNING
 11-27-11
 DATE APPROVED BY

SHEET NUMBER
A-4

CLIENT



126 W. GEMINI DR.
TEMPE, AZ 85283

INTERNAL REVIEW _____ DATE _____

CONSTRUCTION SIGNATURE _____

RF SIGNATURE _____

FACILITIES SIGNATURE _____

REAL ESTATE SIGNATURE _____

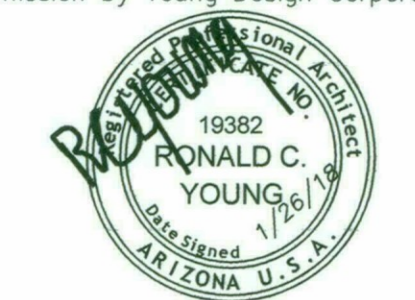
PLANS PREPARED BY



architecture / project management
10245 E. Via Linda, Scottsdale, AZ 85258
ph: 480 451 9609 fax: 480 451 9608
e mail: corporate@ydcoffice.com

SEAL

This drawing is copyrighted and the property of Young Design Corporation (YDC) & produced solely by YDC and affiliates. reproduction or use of this drawing and/or the information contained hereon is forbidden without written permission by Young Design Corporation.



THIS DOCUMENT CONTAINS AN ELECTRONIC SIGNATURE PURSUANT TO A.R.S. TITLE 41 AND TITLE 44. IT IS A VIOLATION FOR ANY PERSON, UNLESS UNDER THE DIRECT SUPERVISION OF THE REGISTRANT, TO MODIFY THIS DOCUMENT IN ANY WAY.

NO. DATE DESCRIPTION

1 01/26/18 FINAL ISSUE

ARCHITECTS JOB NO.
YDC-7963

PROJECT INFORMATION

PHO SCOTTSDALE STADIUM - 850 SMR

7408 E. OSBORN ROAD
SCOTTSDALE, ARIZONA, 85251

SHEET TITLE

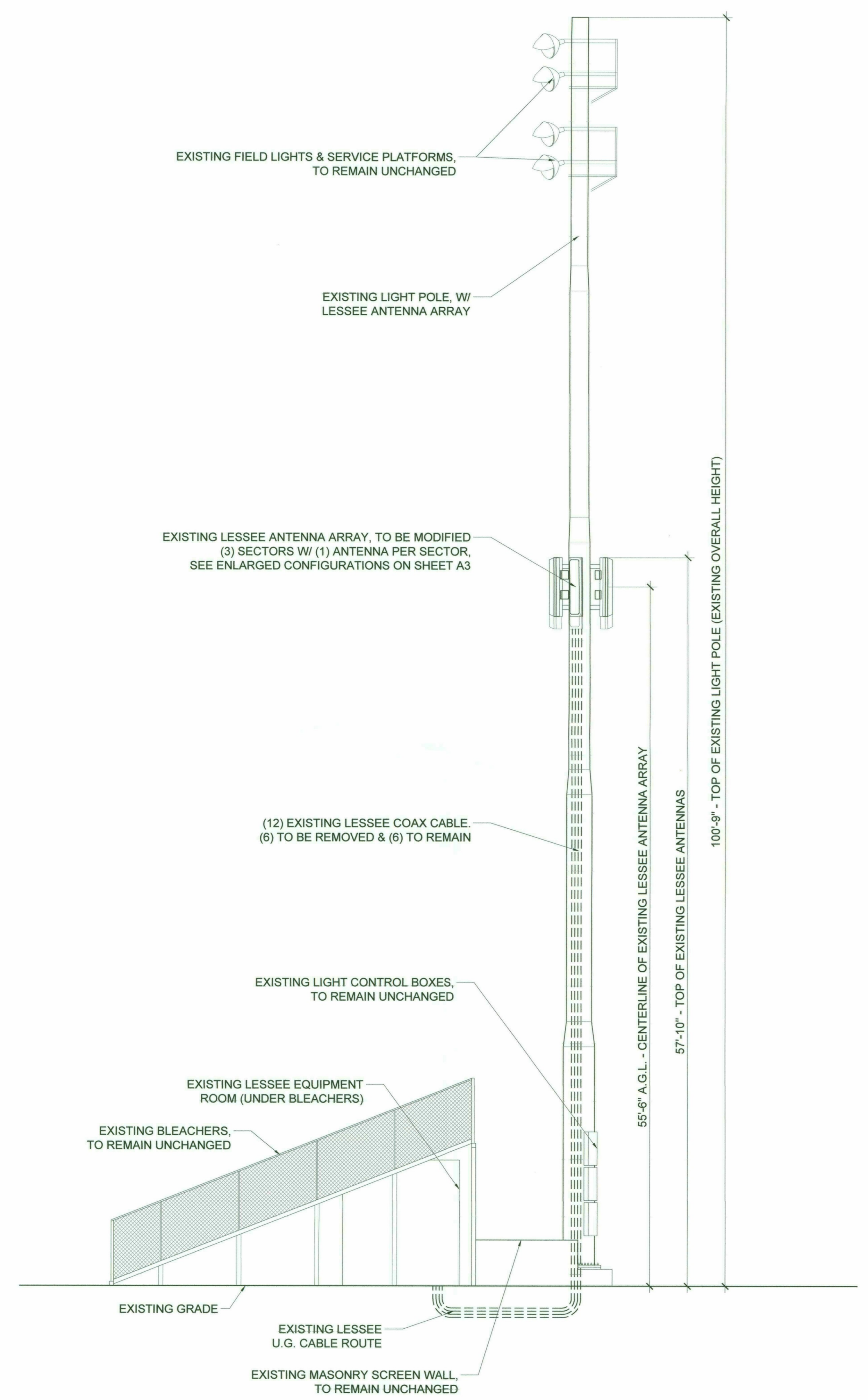
ELEVATIONS

JURISDICTION APPROVAL

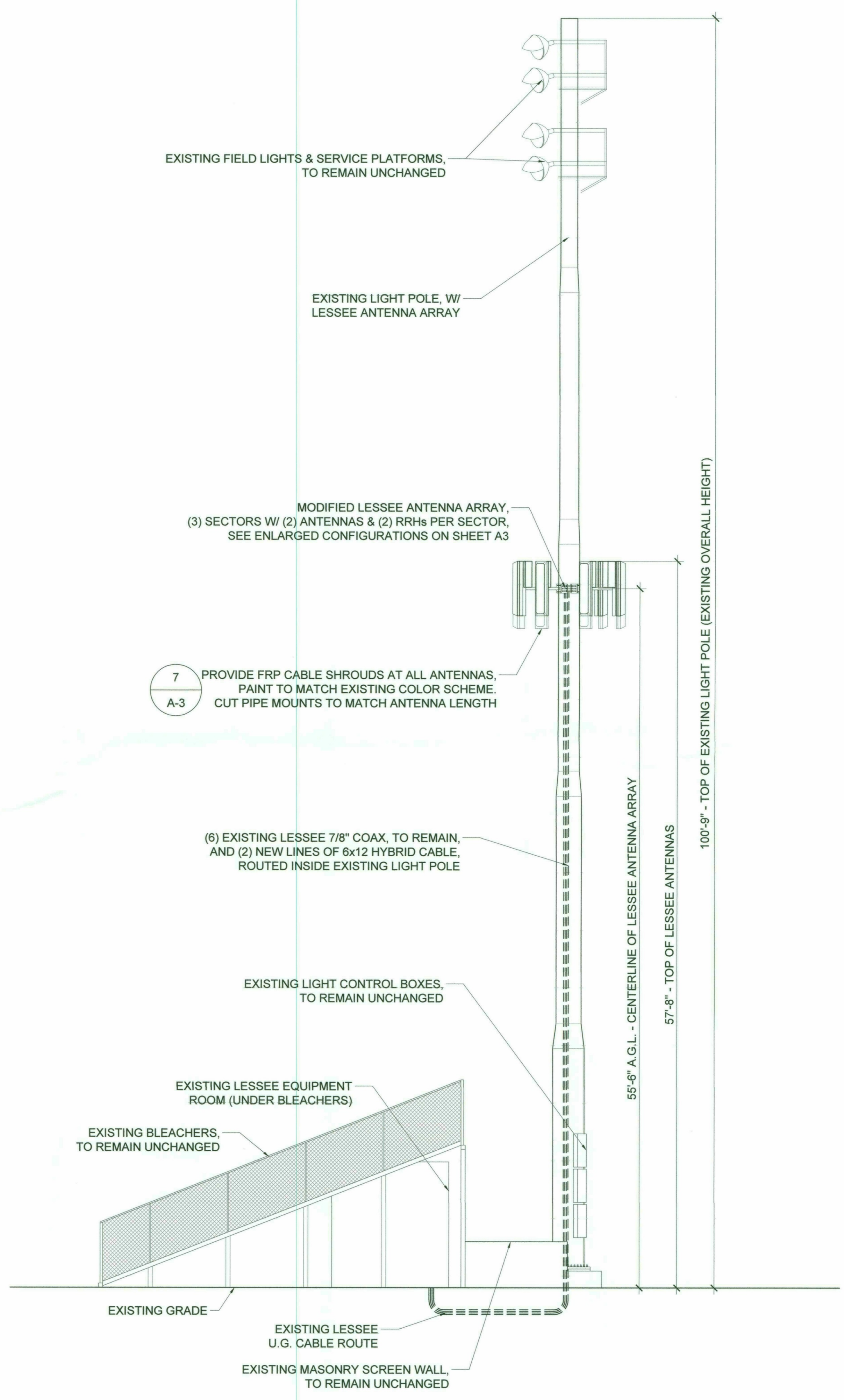
APPROVED
FINAL PLANS PLANNING
11-27-18 KN
DATE APPROVED BY

SHEET NUMBER

A-5



2 EXISTING WEST ELEVATION
SCALE: 1/4" = 1'-0" SCALE: 1/4" = 1'-0"



1 NEW WEST ELEVATION
SCALE: 1/4" = 1'-0" SCALE: 1/4" = 1'-0"