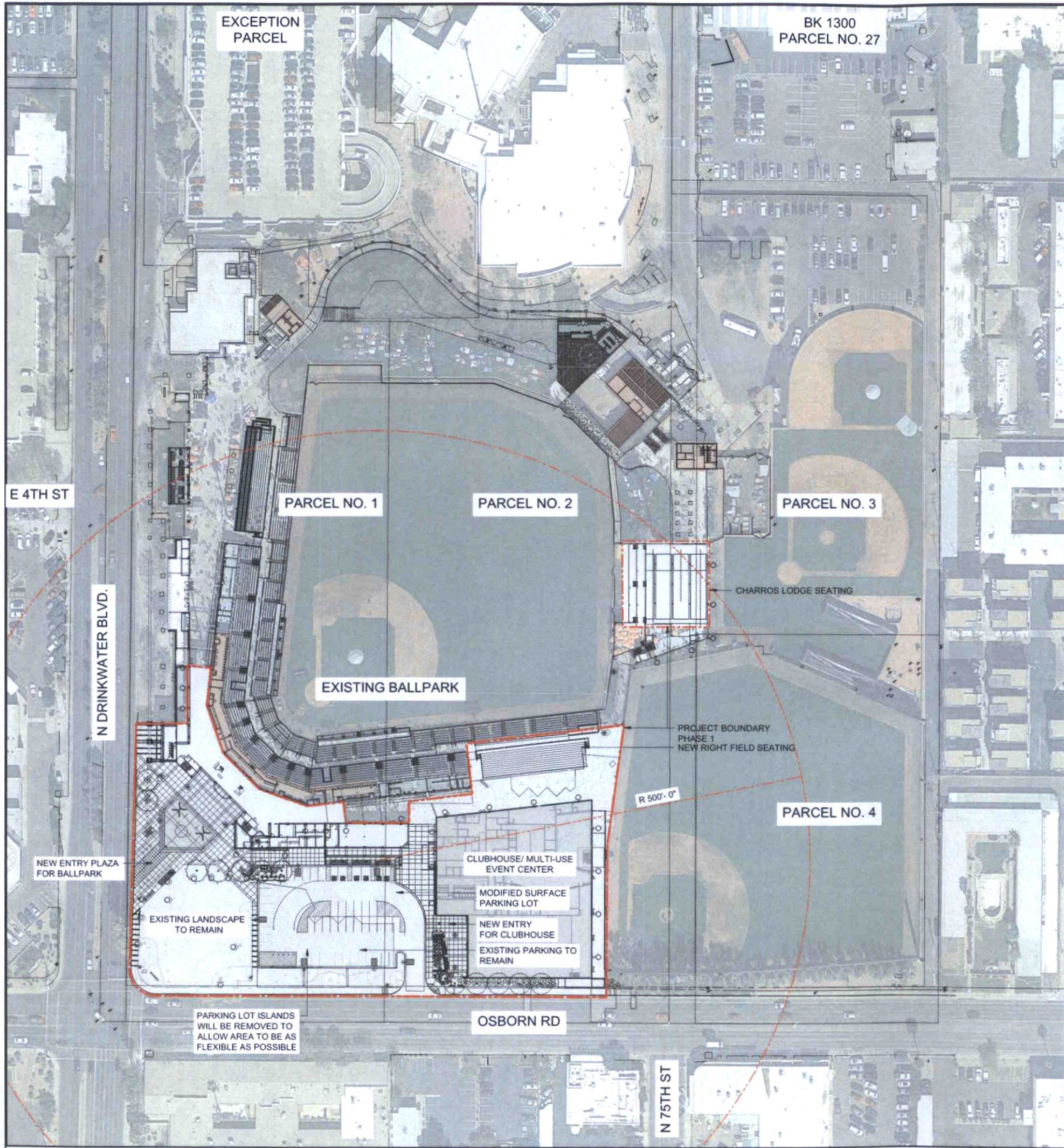


Full Size or Largest Size
(site plan, landscape, elevations)

10/19/2018 2:31:51 PM



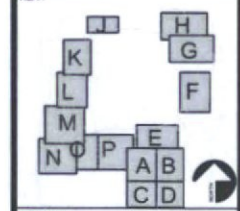
POPULOUS

NOT FOR CONSTRUCTION

City of Scottsdale
Stadium Multi-Use Event Center
 7408 E Osborn Rd, Scottsdale, AZ 85251

REVISIONS		
No	Description	Date

DRB
 Submittal
 © COPYRIGHT 2018
 DWL ARCHITECTS - PLANNERS, INC.

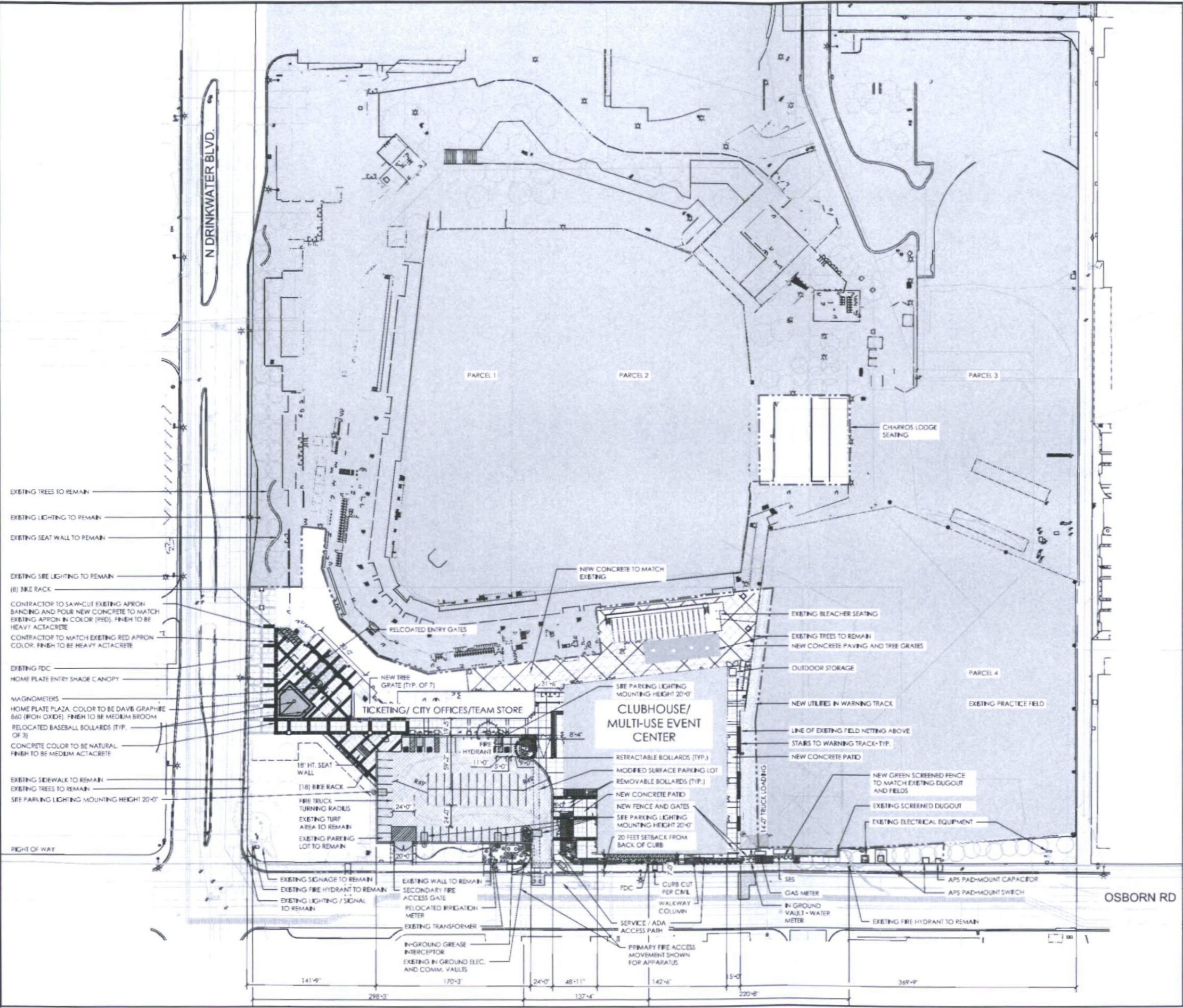


SHEET TITLE
CONTEXT AERIAL DRB

SHEET NUMBER
22.1

DRAWN BY JS	REVIEWED BY SB
DATE 10/26/18	PROJECT NUMBER 1821.00

10/19/2018 2:31:51 PM



1 DRB SITE PLAN
1"=50'-0"

SITE LEGEND DRB

- EXISTING SIGNAGE TO REMAIN
- EXISTING FIRE HYDRANT TO REMAIN
- EXISTING SITE LIGHTING
- SITE PARKING LIGHTING MOUNTING HEIGHT 20'-0"
- PEDESTRIAN LIGHTING MOUNTING HEIGHT 16'-0"
- ▲ SITE BOLLARD TYP.
- SITE BOLLARD COLLAPSIBLE
- ||| BIKE RACKS
- ▲ ADA PARKING SIGNAGE
- PHASE- 1 LIMIT OF WORK

ZONING: R-5 DO
 APN's: 130-24-001 A (PARCEL 1)
 130-24-002 C (PARCEL 2)
 130-24-003 E (PARCEL 3)
 130-24-003 D (PARCEL 4)

PHASE 1 PROJECT AREA:
 GROSS SITE ACREAGE: 4.6 ACRES
 NET SITE ACREAGE: 3.7 ACRES

PARKING:

TYPICAL SPACE = 9'-0" X 18'-0"
 ADA SPACE = 11'-0" X 18'-0"
 TOTAL NO. OF PARKING = 60
 ADA PARKING = 5
 NO. OF BIKE RACKS = 28

THE EXISTING PARKING LOT SOUTH OF THE STADIUM HAD 117 SPACES OF WHICH 5 WERE ADA IN THE WEST HALF OF THE LOT. THE NEW CLUBHOUSE IS LOCATED ON TOP OF THE EAST HALF OF THE LOT REDUCING THE SPACE COUNT TO 56 OF WHICH 5 ARE ADA SPACES PER 2010 ADA BETWEEN 51 AND 75 SPACES REQUIRE 3 ADA SPACES WHICH THE REVISED PLAN EXCEEDS. PARKING LOT IS USED PRIMARILY FOR CLUBHOUSE AND STAFF PARKING. IT IS NOT USED FOR GAME DAY SPECTATOR PARKING. THE PARKING GARAGE TO THE NORTH IS THE PRIMARY PARKING FOR STADIUM AND CLUBHOUSE VISITORS. GAME DAY RIDE SHARE ACCOMMODATES A LARGE PERCENTAGE OF THE SPECTATORS REDUCING THE DEMAND FOR PARKING SPACES.

GENERAL NOTES:

1. REFUSE WILL CONTINUE TO BE ROUTED TO CENTER FIELD.
2. PARKING LOT ISLANDS WILL BE REMOVED TO ALLOW AREA TO BE AS FLEXIBLE AS POSSIBLE.



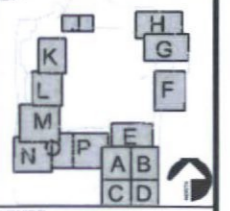
POPULOUS

NOT FOR CONSTRUCTION

City of Scottsdale
Stadium Multi-Use Event Center
 7408 E Osborn Rd, Scottsdale, AZ 85251

REVISIONS		
No.	Description	Date

DRB Submittal
DRB AND EFFECTS - PHOENIX, AZ



SHEET TITLE: SITE PLAN DRB

SHEET NUMBER: 23.0	
DESIGN BY: NS	REVIEWED BY: DS
DATE: 12/12/18	PROJECT NUMBER: 1821.00

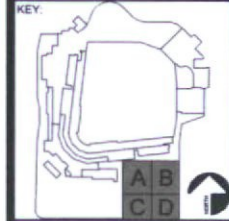
NOT FOR
CONSTRUCTION

City of Scottsdale
Stadium Multi-Use Event Center
7408 E Osborn Rd, Scottsdale, AZ 85251

REVISIONS		
No	Description	Date

DRB

© COPYRIGHT 2019
DWL ARCHITECTS - PLANNERS INC.



SHEET TITLE
**CLUBHOUSE
ELEVATIONS -
COLOR**

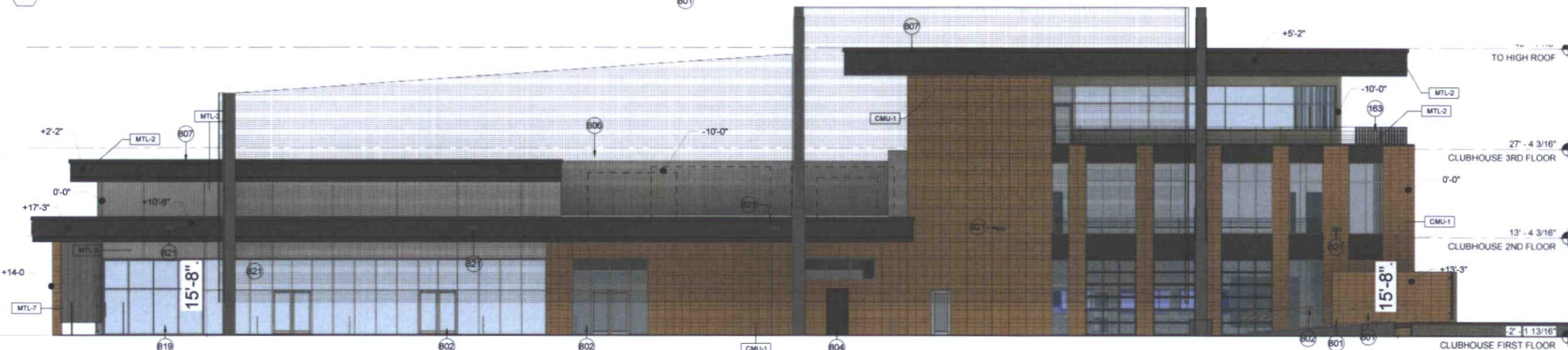
SHEET NUMBER
37.1

DRAWN BY: JH REVIEWED BY: MCB

DATE: 01/15/19 PROJECT NUMBER: 1821.00



1 CLUBHOUSE - NORTH ELEVATION (DRB COLOR)

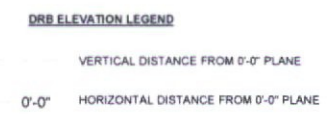


2 CLUBHOUSE - EAST ELEVATION (DRB COLOR)

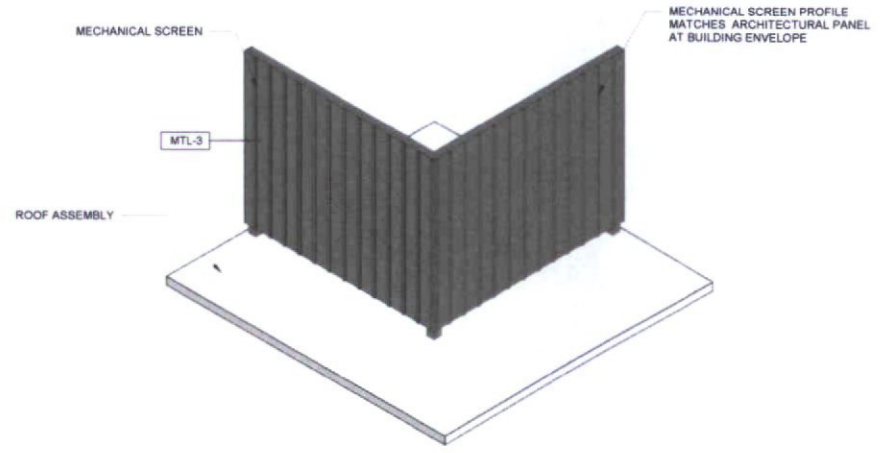


KEYNOTE LEGEND

- B19 METAL RAILING WITH ASSOCIATED HANDRAILS
- B01 MASONRY WALL, STACKED BOND
- B02 EXTERIOR STOREFRONT WALL SYSTEM, REFER TO MATERIAL SCHEDULE FOR GLASS TYPE
- B04 EXTERIOR DOOR - WITH PAINT FINISH
- B06 METAL SCREEN SYSTEM, 10' MINIMUM ABOVE TOP OF ROOF AND/OR 3' MINIMUM ABOVE HIGHEST POINT OF MECHANICAL EQUIPMENT. REFER TO STRUCTURAL DRAWINGS FOR POST DETAILS.
- B07 EXTERIOR METAL PANEL SYSTEM OVER STUD FRAMING
- B19 EXTERIOR GLASS SLIDING DOOR
- B21 LIGHT FIXTURE



NOTE: ROOF MOUNTED EQUIPMENT SHALL BE SCREENED BY A PARAPET OR OTHER MECHANICAL SCREEN. ROOFTOP EQUIPMENT SCREENS SHALL BE AT LEAST AS TALL AS EQUIPMENT BEING SCREENED. GROUND MOUNTED EQUIPMENT SCREENS SHALL BE AT LEAST 1'-0" TALLER THAN THE EQUIPMENT BEING SCREENED.

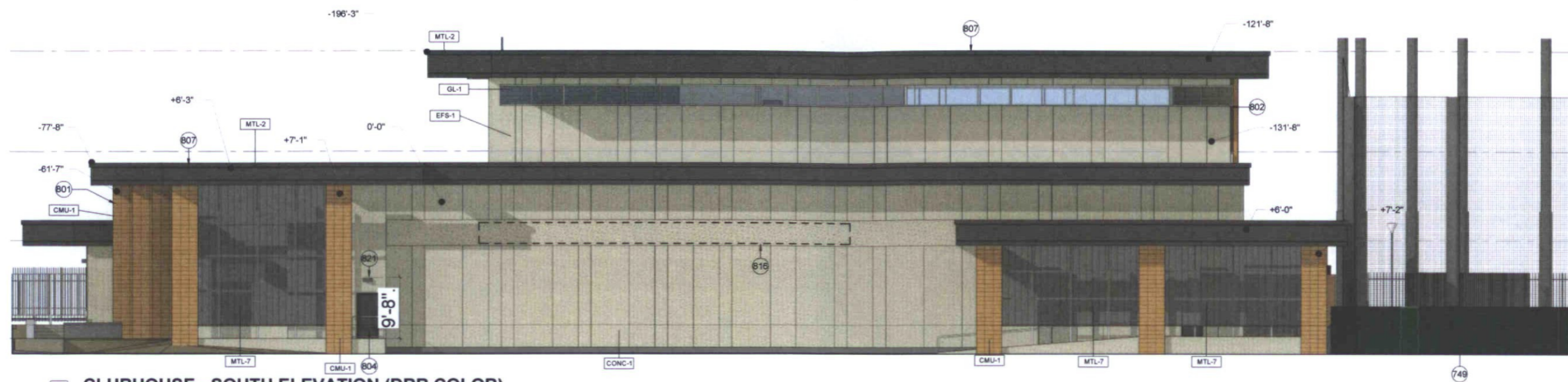


MECHANICAL SCREEN

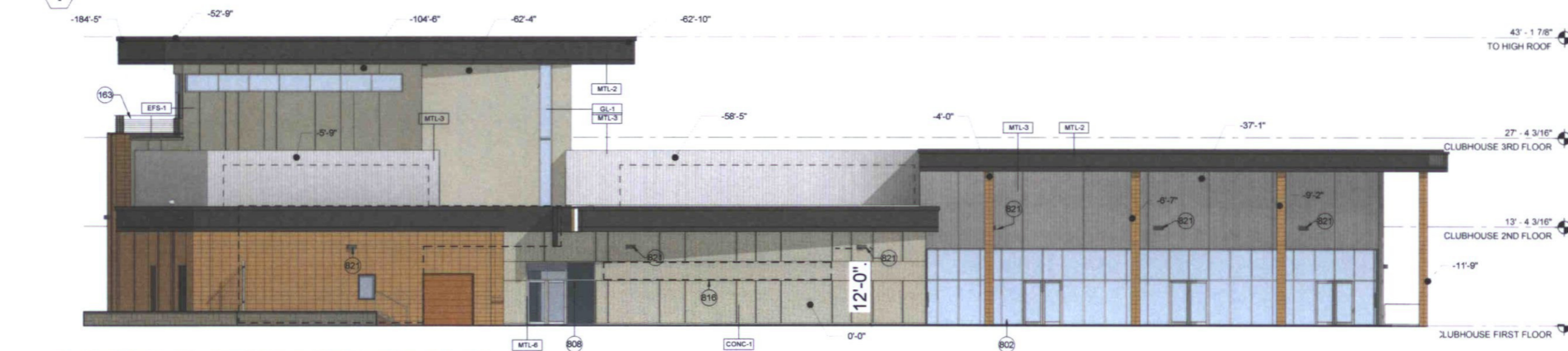
EXTERIOR FINISH SCHEDULE

- CMU-1 MASONRY UNIT, TRENWYTH INDUSTRIES, TRENDSTONE GROUND FACE, COLOR: BEVERLY SPICE, STACKED BOND, RAKE AND TOOL VERTICAL JOINTS, FLUSH AND TOOL HORIZONTAL JOINTS
- CONC-1 CAST-IN-PLACE BOARD FORMED CONCRETE WITH REVEALS, COLOR: NATURAL CONCRETE, PATTERN PENDING SAMPLES. BOARD FORMED CONCRETE MOCKUPS TO BE PROVIDED FOR REVIEW WITH CITY STAFF FOR CONSISTENCY WITH DESIGN INTENT PRIOR TO CONSTRUCTION. MOCKUP TO INCLUDE OPTION WITH A CONSISTENT BOARD WIDTH AND NARROWER REVEAL.
- EFS-1 EXTERIOR INSULATION FINISH SYSTEM, COLOR AND REVEALS TO MATCH BOARD FORMED CONCRETE
- GL-1 1" INSULATED GLAZING UNIT WITH LOW-E COATING (SOLARBAN Z75 (2) ON OPTIBLUE + CLEAR GLASS
- GL-4 1 1/4" INSULATED IMPACTED RESISTENT GLAZING UNIT WITH LOW-E COATING (SOLARBAN Z75 (2) ON OPTIBLUE + CLEAR GLASS
- MTL-2 PRE-FINISHED METAL PANEL, COLOR: MEDIUM GREY METALLIC PER VALSPAR
- MTL-3 PRE-FINISHED METAL PANEL, COLOR: DOVE GREY PER MORIN
- MTL-6 CLEAR ANODIZED ALUMINUM
- MTL-7 PERFORATED METAL: 20 GA. SCREEN (40.3% OPEN, 1/4" ROUND HOLE) W/ DECK PROFILE, VALSPAR MEDIUM GRAY METALLIC FINISH (OR EQUIVALENT)
- PT-2 COLOR TO MATCH MEDIUM GREY METALLIC (PER VALSPAR)

1/30/2019 9:14:47 AM



1 CLUBHOUSE - SOUTH ELEVATION (DRB COLOR)



2 CLUBHOUSE - WEST ELEVATION (DRB COLOR)

REVISIONS

No	Description	Date



KEYNOTE LEGEND

- 163 METAL RAILING WITH ASSOCIATED HANDRAILS
- 749 SITE UTILITIES SCREEN - CHAINLINK FENCE W/ GREEN FABRIC SCREEN
- 801 MASONRY WALL, STACKED BOND
- 802 EXTERIOR STOREFRONT WALL SYSTEM, REFER TO MATERIAL SCHEDULE FOR GLASS TYPE
- 804 EXTERIOR DOOR - WITH PAINT FINISH
- 807 EXTERIOR METAL PANEL SYSTEM OVER STUD FRAMING
- 808 BOARD FORMED CAST-IN-PLACE CONCRETE WALL
- 816 BUILDING SIGNAGE
- 821 LIGHT FIXTURE

- DRB ELEVATION LEGEND**
- ⬆ VERTICAL DISTANCE FROM 0'-0" PLANE
 - 0'-0" HORIZONTAL DISTANCE FROM 0'-0" PLANE

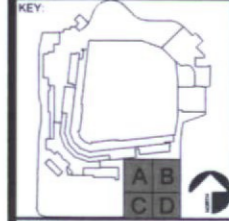
NOTE: ROOF MOUNTED EQUIPMENT SHALL BE SCREENED BY A PARAPET OR OTHER MECHANICAL SCREEN. ROOFTOP EQUIPMENT SCREENS SHALL BE AT LEAST AS TALL AS EQUIPMENT BEING SCREENED. GROUND MOUNTED EQUIPMENT SCREENS SHALL BE AT LEAST 1'-0" TALLER THAN THE EQUIPMENT BEING SCREENED.

EXTERIOR FINISH SCHEDULE

- CMU-1 MASONRY UNIT, TRENWYTH INDUSTRIES, TRENSTONE GROUND FACE, COLOR: BEVERLY SPICE, STACKED BOND, RAKE AND TOOL VERTICAL JOINTS, FLUSH AND TOOL HORIZONTAL JOINTS
- CONC-1 CAST-IN-PLACE BOARD FORMED CONCRETE WITH REVEALS, COLOR: NATURAL CONCRETE; PATTERN PENDING SAMPLES. BOARD FORMED CONCRETE MOCKUPS TO BE PROVIDED FOR REVIEW WITH CITY STAFF FOR CONSISTENCY WITH DESIGN INTENT PRIOR TO CONSTRUCTION. MOCKUP TO INCLUDE OPTION WITH A CONSISTENT BOARD WIDTH AND NARROWER REVEAL.
- EFS-1 EXTERIOR INSULATION FINISH SYSTEM, COLOR AND REVEALS TO MATCH BOARD FORMED CONCRETE
- GL-1 1" INSULATED GLAZING UNIT WITH LOW-E COATING (SOLARBAN Z75 (2) ON OPTIBLUE + CLEAR GLASS
- GL-4 1 1/4" INSULATED IMPACTED RESISTENT GLAZING UNIT WITH LOW-E COATING (SOLARBAN Z75 (2) ON OPTIBLUE + CLEAR GLASS
- MTL-2 PRE-FINISHED METAL PANEL, COLOR: MEDIUM GREY METALLIC PER VALSPAR
- MTL-3 PRE-FINISHED METAL PANEL, COLOR: DOVE GREY PER MORIN
- MTL-6 CLEAR ANODIZED ALUMINUM
- MTL-7 PERFORATED METAL-20 GA. SCREEN (40.3% OPEN, 1/4" ROUND HOLE) W/ DECK PROFILE, VALSPAR MEDIUM GRAY METALLIC FINISH (OR EQUIVALANT)
- PT-2 COLOR TO MATCH MEDIUM GREY METALLIC (PER VALSPAR)

DRB

©COPYRIGHT 2019
DWL ARCHITECTS + PLANNERS INC.



CLUBHOUSE ELEVATIONS - COLOR

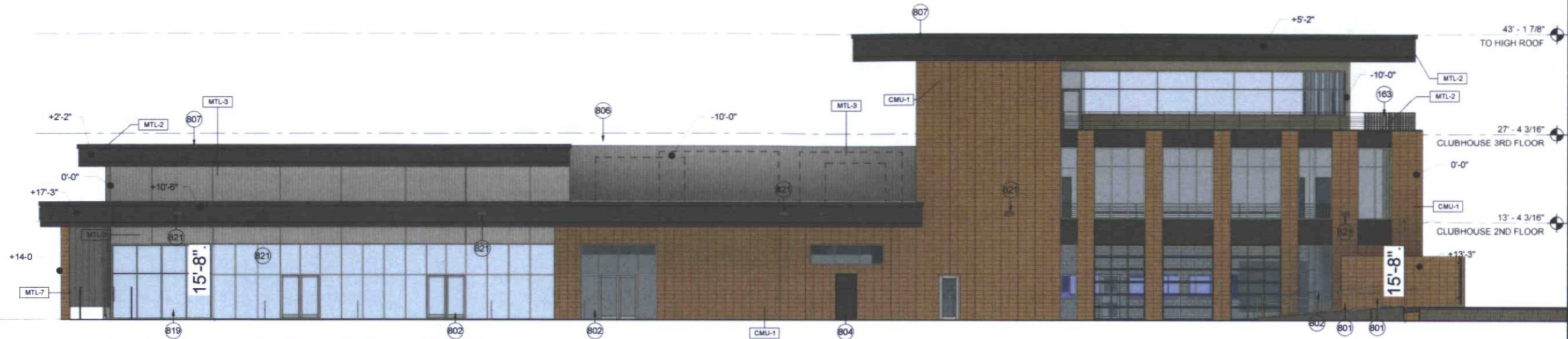
SHEET NUMBER

37.2

DRAWN BY	JH	REVIEWED BY	MCB
DATE	01/15/19	PROJECT NUMBER	1821.00

NOT FOR CONSTRUCTION

City of Scottsdale
Stadium Multi-Use Event Center
7408 E Osborn Rd, Scottsdale, AZ 85251



1 CLUBHOUSE - EAST ELEVATION (DRB COLOR) NO SCREEN

- KEYNOTE LEGEND**
- 163 METAL RAILING WITH ASSOCIATED HANDRAILS
 - 801 MASONRY WALL, STACKED BOND
 - 802 EXTERIOR STOREFRONT WALL SYSTEM, REFER TO MATERIAL SCHEDULE FOR GLASS TYPE
 - 804 EXTERIOR DOOR - WITH PAINT FINISH
 - 806 METAL SCREEN SYSTEM, 10" MINIMUM ABOVE TOP OF ROOF AND/OR 3" MINIMUM ABOVE HIGHEST POINT OF MECHANICAL EQUIPMENT, REFER TO STRUCTURAL DRAWINGS FOR POST DETAILS
 - 807 EXTERIOR METAL PANEL SYSTEM OVER STUD FRAMING
 - 819 EXTERIOR GLASS SLIDING DOOR
 - 821 LIGHT FIXTURE

- DRB ELEVATION LEGEND**
- VERTICAL DISTANCE FROM 0'-0" PLANE
 - 0'-0" HORIZONTAL DISTANCE FROM 0'-0" PLANE

NOTE: ROOF MOUNTED EQUIPMENT SHALL BE SCREENED BY A PARAPET OR OTHER MECHANICAL SCREEN. ROOFTOP EQUIPMENT SCREENS SHALL BE AT LEAST AS TALL AS EQUIPMENT BEING SCREENED. GROUND MOUNTED EQUIPMENT SCREENS SHALL BE AT LEAST 1'-0" TALLER THAN THE EQUIPMENT BEING SCREENED.

EXTERIOR FINISH SCHEDULE

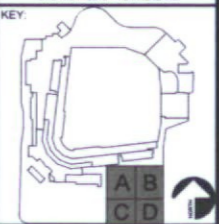
- CMU-1 MASONRY UNIT, TRENWYTH INDUSTRIES, TRENSTONE GROUND FACE, COLOR: BEVERLY SPICE, STACKED BOND, RAKE AND TOOL VERTICAL JOINTS, FLUSH AND TOOL HORIZONTAL JOINTS
- CONC-1 CAST-IN-PLACE BOARD FORMED CONCRETE WITH REVEALS, COLOR: NATURAL CONCRETE, PATTERN PENDING SAMPLES, BOARD FORMED CONCRETE MOCKUPS TO BE PROVIDED FOR REVIEW WITH CITY STAFF FOR CONSISTENCY WITH DESIGN INTENT PRIOR TO CONSTRUCTION. MOCKUP TO INCLUDE OPTION WITH A CONSISTENT BOARD WIDTH AND NARROWER REVEAL.
- EFS-1 EXTERIOR INSULATION FINISH SYSTEM, COLOR AND REVEALS TO MATCH BOARD FORMED CONCRETE
- GL-1 1" INSULATED GLAZING UNIT WITH LOW-E COATING (SOLARBAN Z75 (2) ON OPTIBLUE + CLEAR GLASS
- GL-4 1 1/4" INSULATED IMPACTED RESISTENT GLAZING UNIT WITH LOW-E COATING (SOLARBAN Z75 (2) ON OPTIBLUE + CLEAR GLASS
- MTL-2 PRE-FINISHED METAL PANEL, COLOR: MEDIUM GREY METALLIC PER VALSPAR
- MTL-3 PRE-FINISHED METAL PANEL, COLOR: DOVE GREY PER MORIN
- MTL-6 CLEAR ANODIZED ALUMINIUM
- MTL-7 PERFORATED METAL, 20 GA. SCREEN (40.3% OPEN, 1/4" ROUND HOLE) W/ DECK PROFILE, VALSPAR MEDIUM GRAY METALLIC FINISH (OR EQUIVALANT)
- PT-2 COLOR TO MATCH MEDIUM GREY METALLIC (PER VALSPAR)

REVISIONS

No.	Description	Date

DRB

© COPYRIGHT 2019
DWL ARCHITECTS - PLANNERS INC.



SHEET TITLE
CLUBHOUSE ELEVATIONS - COLOR

SHEET NUMBER
37.3

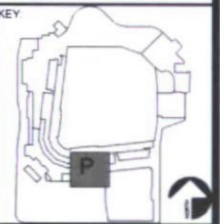
DRAWN BY Author	REVIEWED BY Checker
DATE 01/15/19	PROJECT NUMBER 1821.00

REVISIONS

No	Description	Date

DRB

© COPYRIGHT 2019
DWL ARCHITECTS + PLANNERS INC.



SHEET TITLE
CITY OFFICES ELEVATIONS - COLOR

SHEET NUMBER

37.4

DRAWN BY JH REVIEWED BY MCB

DATE 01/15/19 PROJECT NUMBER 1821.00



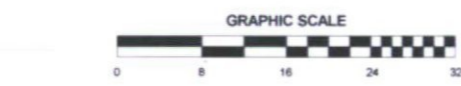
1 CITY OFFICES WEST ELEVATION (DRB COLOR)



3 CITY OFFICES - NORTH ELEVATION (DRB COLOR)



2 CITY OFFICES - SOUTH ELEVATION (DRB COLOR)



KEYNOTE LEGEND

- 802 EXTERIOR STOREFRONT WALL SYSTEM, REFER TO MATERIAL SCHEDULE FOR GLASS TYPE
- 804 EXTERIOR DOOR - WITH PAINT FINISH
- 806 BOARD FORMED CAST-IN-PLACE CONCRETE WALL
- 809 EXISTING CMU COLUMN
- 810 EXISTING METAL PANEL
- 811 EXISTING CMU WALL
- 813 SALVAGED EXISTING TICKET WINDOW
- 816 BUILDING SIGNAGE
- 824 CMU - MATCH ADJACENT EXISTING CMU COLOR, COURSING, AND FINISH

DRB ELEVATION LEGEND

- ↕ VERTICAL DISTANCE FROM 0'-0" PLANE
- 0'-0" HORIZONTAL DISTANCE FROM 0'-0" PLANE

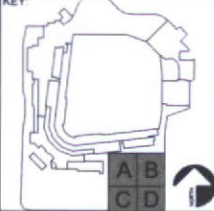
NOTE: ROOF MOUNTED EQUIPMENT SHALL BE SCREENED BY A PARAPET OR OTHER MECHANICAL SCREEN. ROOFTOP EQUIPMENT SCREENS SHALL BE AT LEAST AS TALL AS EQUIPMENT BEING SCREENED. GROUND MOUNTED EQUIPMENT SCREENS SHALL BE AT LEAST 1'-0" TALLER THAN THE EQUIPMENT BEING SCREENED.

EXTERIOR FINISH SCHEDULE

- CMU-1 MASONRY UNIT, TRENWYTH INDUSTRIES, TRENSTONE GROUND FACE, COLOR: BEVERLY SPICE, STACKED BOND, RAKE AND TOOL VERTICAL JOINTS, FLUSH AND TOOL HORIZONTAL JOINTS
- CONC-1 CAST-IN-PLACE BOARD FORMED CONCRETE WITH REVEALS, COLOR: NATURAL CONCRETE. PATTERN PENDING SAMPLES. BOARD FORMED CONCRETE MOCKUPS TO BE PROVIDED FOR REVIEW WITH CITY STAFF FOR CONSISTENCY WITH DESIGN INTENT PRIOR TO CONSTRUCTION. MOCKUP TO INCLUDE OPTION WITH A CONSISTENT BOARD WIDTH AND NARROWER REVEAL.
- EFS-1 EXTERIOR INSULATION FINISH SYSTEM, COLOR AND REVEALS TO MATCH BOARD FORMED CONCRETE
- GL-1 1" INSULATED GLAZING UNIT WITH LOW-E COATING (SOLARBAN Z75 (2) ON OPTIBLUE + CLEAR GLASS
- GL-4 1 1/4" INSULATED IMPACTED RESISTANT GLAZING UNIT WITH LOW-E COATING (SOLARBAN Z75 (2) ON OPTIBLUE + CLEAR GLASS
- MTL-2 PRE-FINISHED METAL PANEL, COLOR: MEDIUM GREY METALLIC PER VALSPAR
- MTL-3 PRE-FINISHED METAL PANEL, COLOR: DOVE GREY PER MORIN
- MTL-6 CLEAR ANODIZED ALUMINUM
- MTL-7 PERFORATED METAL 20 GA. SCREEN (40.3% OPEN, 1/4" ROUND HOLE) W/ DECK PROFILE, VALSPAR MEDIUM GRAY METALLIC FINISH (OR EQUIVALENT)
- PT-2 COLOR TO MATCH MEDIUM GREY METALLIC (PER VALSPAR)

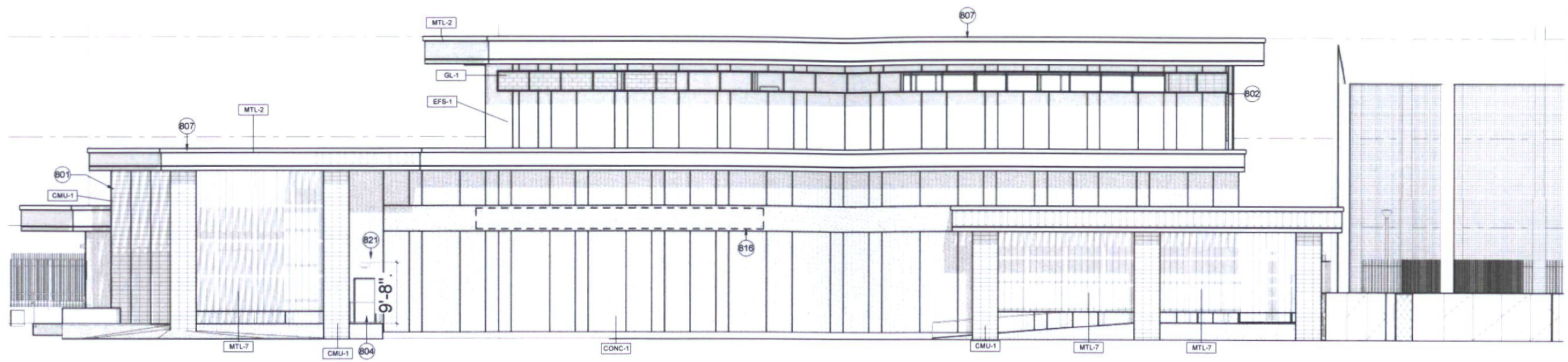
REVISIONS		
No.	Description	Date

DRB
 ©COPYRIGHT 2019
 DWL ARCHITECTS + PLANNERS INC.

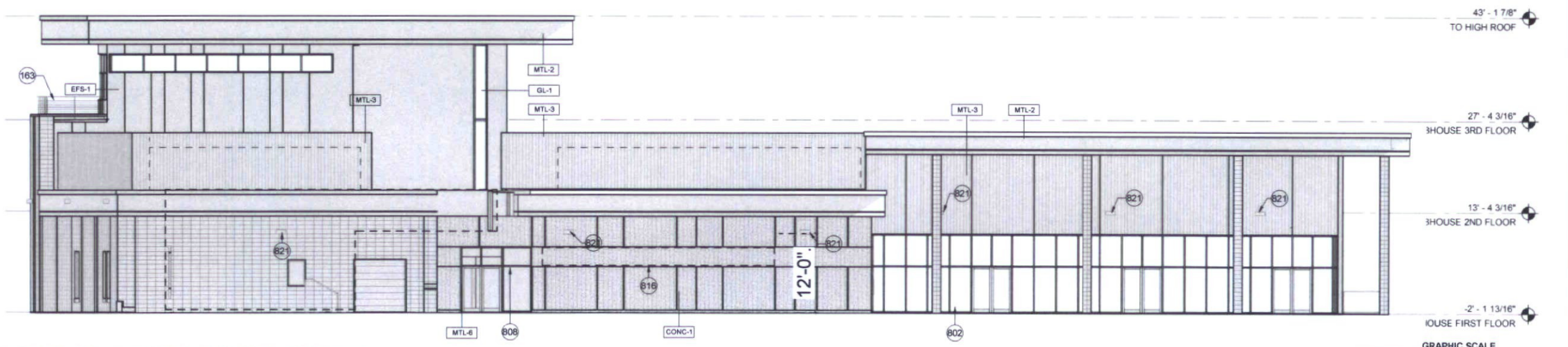


SHEET TITLE
**CLUBHOUSE
 ELEVATIONS - BW**

SHEET NUMBER	
37.6	
DRAWN BY JH	REVIEWED BY MCB
DATE 01/15/19	PROJECT NUMBER 1821.00



1 CLUBHOUSE - SOUTH ELEVATION (DRB BW)



2 CLUBHOUSE - WEST ELEVATION (DRB BW)

KEYNOTE LEGEND

- 163 METAL RAILING WITH ASSOCIATED HANDRAILS
- 801 MASONRY WALL, STACKED BOND
- 802 EXTERIOR STOREFRONT WALL SYSTEM, REFER TO MATERIAL SCHEDULE FOR GLASS TYPE
- 804 EXTERIOR DOOR - WITH PAINT FINISH
- 807 EXTERIOR METAL PANEL SYSTEM OVER STUD FRAMING
- 808 BOARD FORMED CAST-IN-PLACE CONCRETE WALL
- 816 BUILDING SIGNAGE
- 821 LIGHT FIXTURE

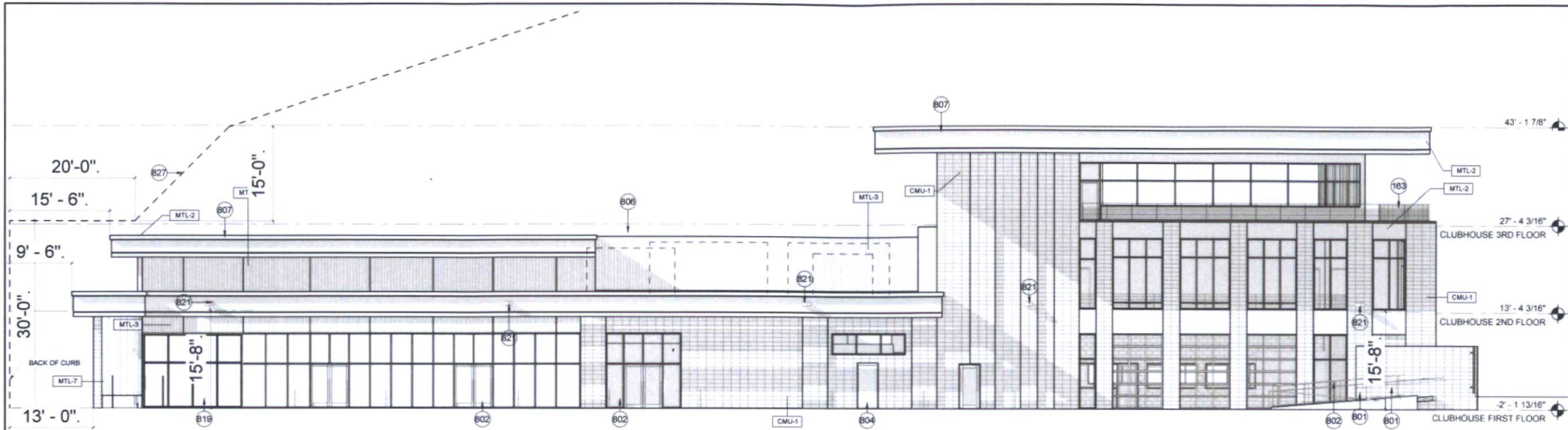
DRB ELEVATION LEGEND

- ↕ VERTICAL DISTANCE FROM 0'-0" PLANE
- 0'-0" HORIZONTAL DISTANCE FROM 0'-0" PLANE

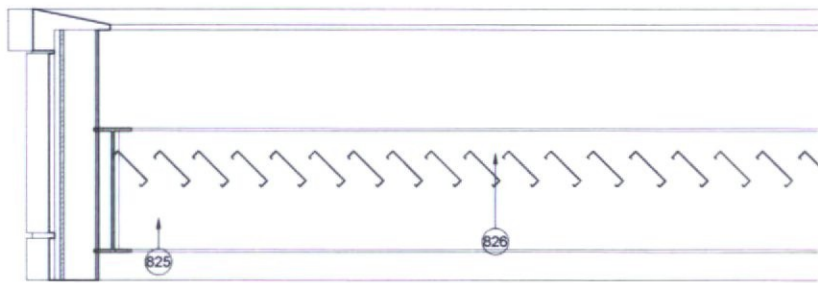
NOTE: ROOF MOUNTED EQUIPMENT SHALL BE SCREENED BY A PARAPET OR OTHER MECHANICAL SCREEN. ROOFTOP EQUIPMENT SCREENS SHALL BE AT LEAST AS TALL AS EQUIPMENT BEING SCREENED. GROUND MOUNTED EQUIPMENT SCREENS SHALL BE AT LEAST 1'-0" TALLER THAN THE EQUIPMENT BEING SCREENED.

EXTERIOR FINISH SCHEDULE

- CMU-1 MASONRY UNIT, TRENWYTH INDUSTRIES, TRENSTONE GROUND FACE, COLOR: BEVERLY SPICE, STACKED BOND, RAKE AND TOOL VERTICAL JOINTS, FLUSH AND TOOL HORIZONTAL JOINTS
- CONC-1 CAST-IN-PLACE BOARD FORMED CONCRETE WITH REVEALS, COLOR: NATURAL CONCRETE, PATTERN PENDING SAMPLES. BOARD FORMED CONCRETE MOCKUPS TO BE PROVIDED FOR REVIEW WITH CITY STAFF FOR CONSISTENCY WITH DESIGN INTENT PRIOR TO CONSTRUCTION. MOCKUP TO INCLUDE OPTION WITH A CONSISTENT BOARD WIDTH AND NARROWER REVEAL.
- EFS-1 EXTERIOR INSULATION FINISH SYSTEM, COLOR AND REVEALS TO MATCH BOARD FORMED CONCRETE
- GL-1 1" INSULATED GLAZING UNIT WITH LOW-E COATING (SOLARBAN Z75 (2) ON OPTIBLUE + CLEAR GLASS
- GL-4 1 1/4" INSULATED IMPACTED RESISTENT GLAZING UNIT WITH LOW-E COATING (SOLARBAN Z75 (2) ON OPTIBLUE + CLEAR GLASS
- MTL-2 PRE-FINISHED METAL PANEL, COLOR: MEDIUM GREY METALLIC (PER VALSPAR)
- MTL-3 PRE-FINISHED METAL PANEL, COLOR: DOVE GREY (PER MORIN)
- MTL-6 CLEAR ANODIZED ALUMINUM
- MTL-7 PERFORATED METAL 20 GA. SCREEN (40.3% OPEN, 1/4" ROUND HOLE) W/ DECK PROFILE, VALSPAR MEDIUM GRAY METALLIC FINISH (OR EQUIVALENT)
- PT-2 COLOR TO MATCH MEDIUM GREY METALLIC (PER VALSPAR)



1 CLUBHOUSE - EAST ELEVATION (DRB BW) NO SCREEN



2 TYPICAL SECTION AT SHADE TRELLIS
3/4" = 1'-0"

KEYNOTE LEGEND

- 163 METAL RAILING WITH ASSOCIATED HANDRAILS
- 801 MASONRY WALL, STACKED BOND
- 802 EXTERIOR STOREFRONT WALL SYSTEM. REFER TO MATERIAL SCHEDULE FOR GLASS TYPE
- 804 EXTERIOR DOOR - WITH PAINT FINISH
- 806 METAL SCREEN SYSTEM 10' MINIMUM ABOVE TOP OF ROOF AND/OR 3' MINIMUM ABOVE HIGHEST POINT OF MECHANICAL EQUIPMENT. REFER TO STRUCTURAL DRAWINGS FOR POST DETAILS
- 807 EXTERIOR METAL PANEL SYSTEM OVER STUD FRAMING
- 819 EXTERIOR GLASS SLIDING DOOR
- 821 LIGHT FIXTURE
- 825 STRUCTURAL FRAMING
- 826 STEEL TRELLIS
- 827 ALLOWABLE BUILDING HEIGHT STEP BACK

DRB ELEVATION LEGEND

- VERTICAL DISTANCE FROM 0'-0" PLANE
- HORIZONTAL DISTANCE FROM 0'-0" PLANE

NOTE: ROOF MOUNTED EQUIPMENT SHALL BE SCREENED BY A PARAPET OR OTHER MECHANICAL SCREEN. ROOFTOP OF EQUIPMENT SCREENS SHALL BE AT LEAST AS TALL AS EQUIPMENT BEING SCREENED. GROUND MOUNTED EQUIPMENT SCREENS SHALL BE AT LEAST 1'-0" TALLER THAN THE EQUIPMENT BEING SCREENED.

EXTERIOR FINISH SCHEDULE

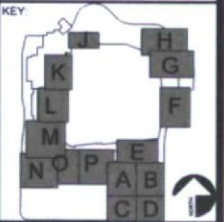
- CMU-1 MASONRY UNIT, TRENWYTH INDUSTRIES, TRENSTONE GROUND FACE. COLOR: BEVERLY SPICE, STACKED BOND, RAKE AND TOOL VERTICAL JOINTS, FLUSH AND TOOL HORIZONTAL JOINTS
- CONC-1 CAST-IN-PLACE BOARD FORMED CONCRETE WITH REVEALS. COLOR: NATURAL CONCRETE. PATTERN PENDING SAMPLES. BOARD FORMED CONCRETE MOCKUPS TO BE PROVIDED FOR REVIEW WITH CITY STAFF FOR CONSISTENCY WITH DESIGN INTENT PRIOR TO CONSTRUCTION. MOCKUP TO INCLUDE OPTION WITH A CONSISTENT BOARD WIDTH AND NARROWER REVEAL.
- EFS-1 EXTERIOR INSULATION FINISH SYSTEM, COLOR AND REVEALS TO MATCH BOARD FORMED CONCRETE
- GL-1 1" INSULATED GLAZING UNIT WITH LOW-E COATING (SOLARBAN Z75 (2) ON OPTIBLUE + CLEAR GLASS
- GL-4 1 1/4" INSULATED IMPACTED RESISTENT GLAZING UNIT WITH LOW-E COATING (SOLARBAN Z75 (2) ON OPTIBLUE + CLEAR GLASS
- MTL-2 PRE-FINISHED METAL PANEL, COLOR: MEDIUM GREY METALLIC PER VALSPAR)
- MTL-3 PRE-FINISHED METAL PANEL, COLOR: DOVE GREY PER MORIN
- MTL-6 CLEAR ANODIZED ALUMINUM
- MTL-7 PERFORATED METAL 20 GA. SCREEN (40.3% OPEN, 1/4" ROUND HOLE) W/ DECK PROFILE, VALSPAR MEDIUM GRAY METALLIC FINISH (OR EQUIVALENT)
- PT-2 COLOR TO MATCH MEDIUM GREY METALLIC (PER VALSPAR)

REVISIONS

No.	Description	Date

DRB

© COPYRIGHT 2019
DWL ARCHITECTS - PLANNERS, INC



CLUBHOUSE ELEVATIONS - BW

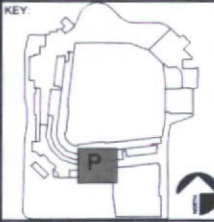
SHEET NUMBER 37.7	
DRAWN BY Author	REVIEWED BY Checker
DATE 01/15/19	PROJECT NUMBER 1821.00

REVISIONS

No.	Description	Date

DRB

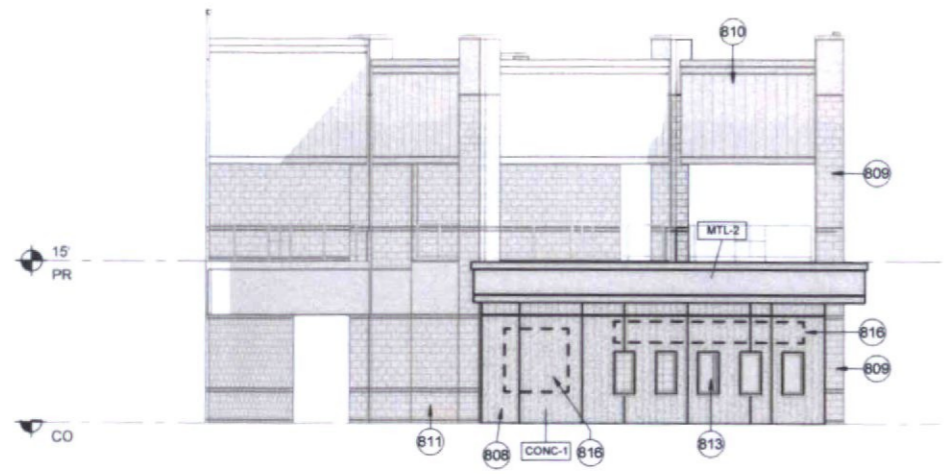
©COPYRIGHT 2019
DWL ARCHITECTS - PLANNERS INC.



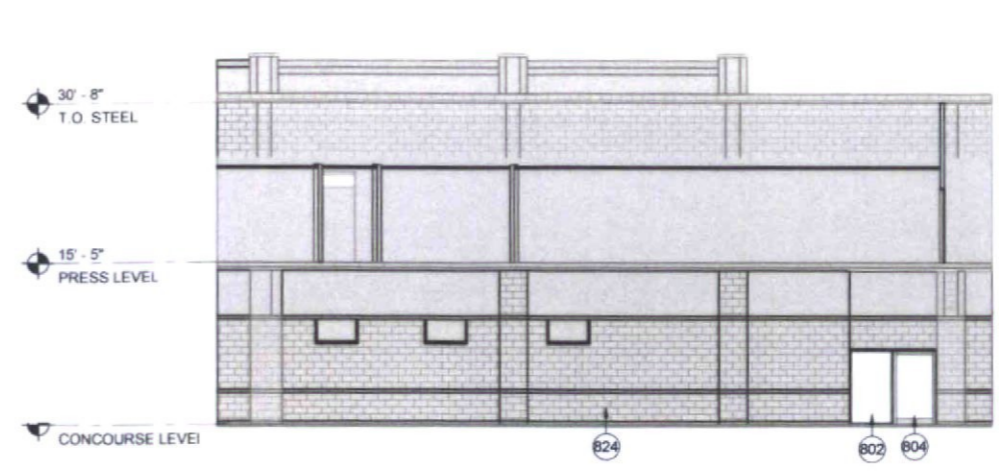
SHEET TITLE
CITY OFFICES ELEVATIONS - BW

SHEET NUMBER
37.8

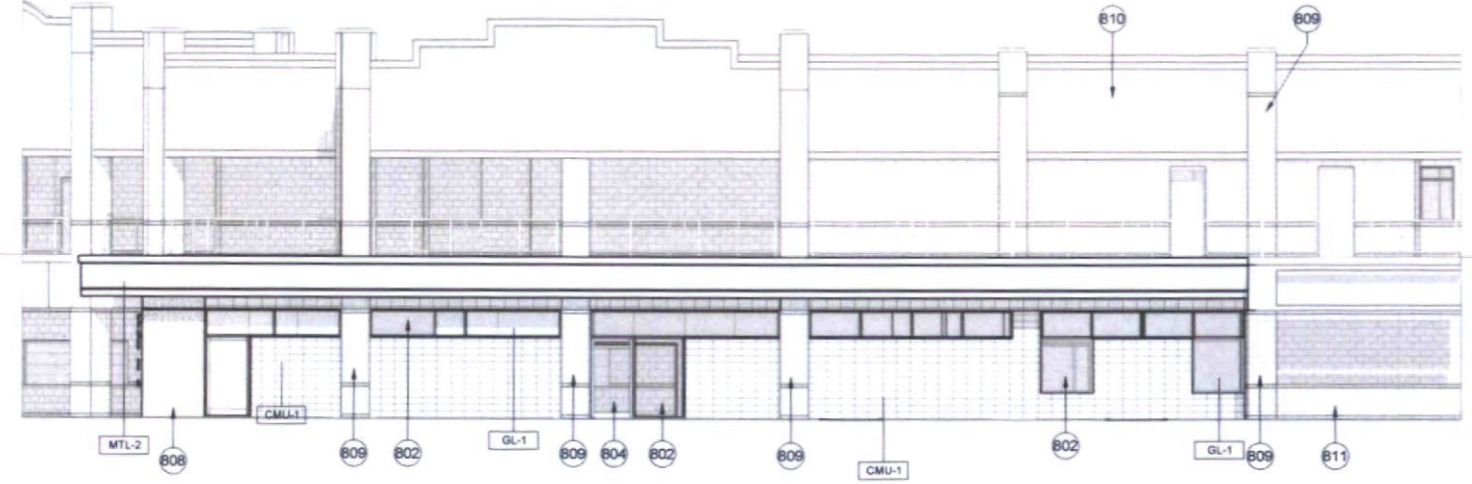
DRAWN BY JH	REVIEWED BY MCB
DATE 01/15/19	PROJECT NUMBER 1821.00



1 CITY OFFICES WEST ELEVATION (DRB BW)



3 CITY OFFICES - NORTH ELEVATION (DRB COLOR)



2 CITY OFFICES - SOUTH ELEVATION (DRB BW)



KEYNOTE LEGEND

- 802 EXTERIOR STOREFRONT WALL SYSTEM, REFER TO MATERIAL SCHEDULE FOR GLASS TYPE
- 804 EXTERIOR DOOR - WITH PAINT FINISH
- 808 BOARD FORMED CAST-IN-PLACE CONCRETE WALL
- 809 EXISTING CMU COLUMN
- 810 EXISTING METAL PANEL
- 811 EXISTING CMU WALL
- 813 SALVAGED EXISTING TICKET WINDOW
- 816 BUILDING SIGNAGE
- 824 CMU - MATCH ADJACENT EXISTING CMU COLOR, COURSING, AND FINISH

DRB ELEVATION LEGEND

- VERTICAL DISTANCE FROM 0'-0" PLANE
- 0'-0" HORIZONTAL DISTANCE FROM 0'-0" PLANE

NOTE: ROOF MOUNTED EQUIPMENT SHALL BE SCREENED BY A PARAPET OR OTHER MECHANICAL SCREEN. ROOFTOP EQUIPMENT SCREENS SHALL BE AT LEAST AS TALL AS EQUIPMENT BEING SCREENED. GROUND MOUNTED EQUIPMENT SCREENS SHALL BE AT LEAST 1'-0" TALLER THAN THE EQUIPMENT BEING SCREENED.

EXTERIOR FINISH SCHEDULE

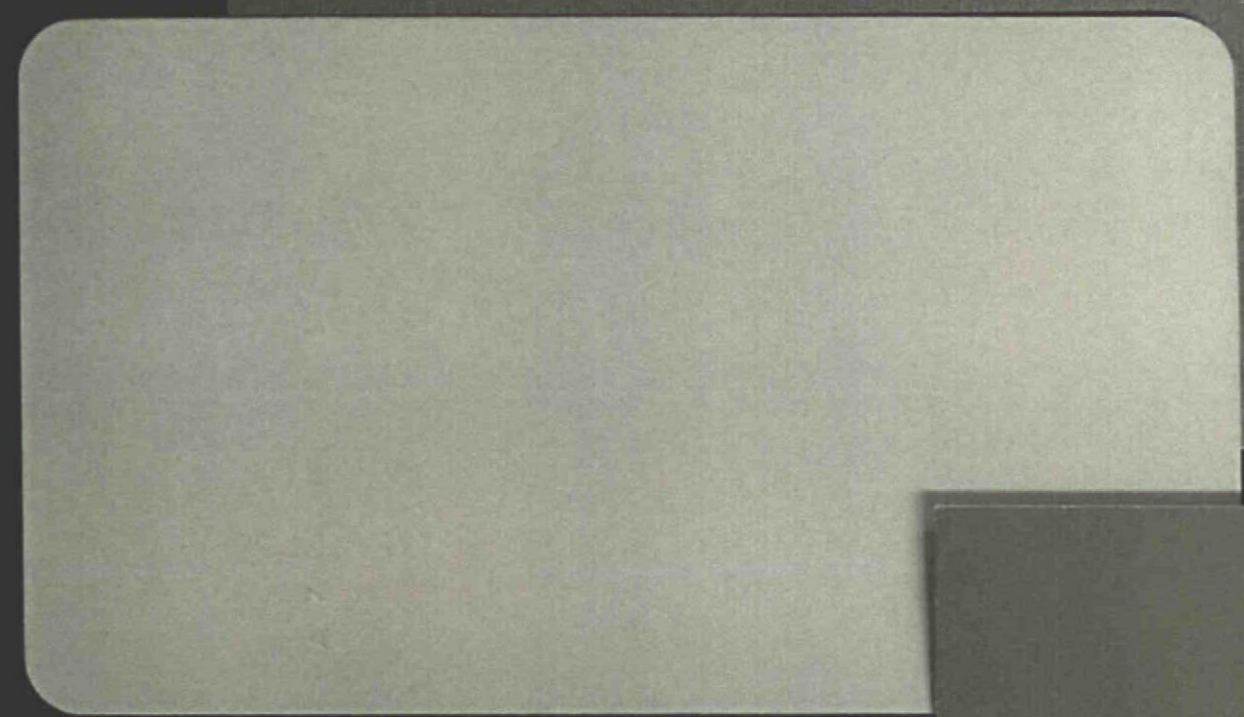
- CMU-1 MASONRY UNIT, TRENWYTH INDUSTRIES, TRENDSTONE GROUND FACE, COLOR: BEVERLY SPICE, STACKED BOND, RAKE AND TOOL VERTICAL JOINTS, FLUSH AND TOOL HORIZONTAL JOINTS
- CONC-1 CAST-IN-PLACE BOARD FORMED CONCRETE WITH REVEALS, COLOR: NATURAL CONCRETE, PATTERN PENDING SAMPLES. BOARD FORMED CONCRETE MOCKUPS TO BE PROVIDED FOR REVIEW WITH CITY STAFF FOR CONSISTENCY WITH DESIGN INTENT PRIOR TO CONSTRUCTION. MOCKUP TO INCLUDE OPTION WITH A CONSISTENT BOARD WIDTH AND NARROWER REVEAL.
- EFS-1 EXTERIOR INSULATION FINISH SYSTEM, COLOR AND REVEALS TO MATCH BOARD FORMED CONCRETE
- GL-1 1" INSULATED GLAZING UNIT WITH LOW-E COATING (SOLARBAN Z75 (2) ON OPTIBLUE + CLEAR GLASS
- GL-4 1 1/4" INSULATED IMPACTED RESISTENT GLAZING UNIT WITH LOW-E COATING (SOLARBAN Z75 (2) ON OPTIBLUE + CLEAR GLASS
- MTL-2 PRE-FINISHED METAL PANEL, COLOR: MEDIUM GREY METALLIC PER VALSPAR)
- MTL-3 PRE-FINISHED METAL PANEL, COLOR: DOVE GREY PER MORIN
- MTL-6 CLEAR ANODIZED ALUMINUM
- MTL-7 PERFORATED METAL 20 GA. SCREEN (40 3% OPEN, 1/4" ROUND HOLE) W/ DECK PROFILE, VALSPAR MEDIUM GRAY METALLIC FINISH (OR EQUIVALANT)
- PT-2 COLOR TO MATCH MEDIUM GREY METALLIC (PER VALSPAR)

SOLARBAN® 775 (2) on OPTIBLUE® + Clear Glass Insulating Glass Unit

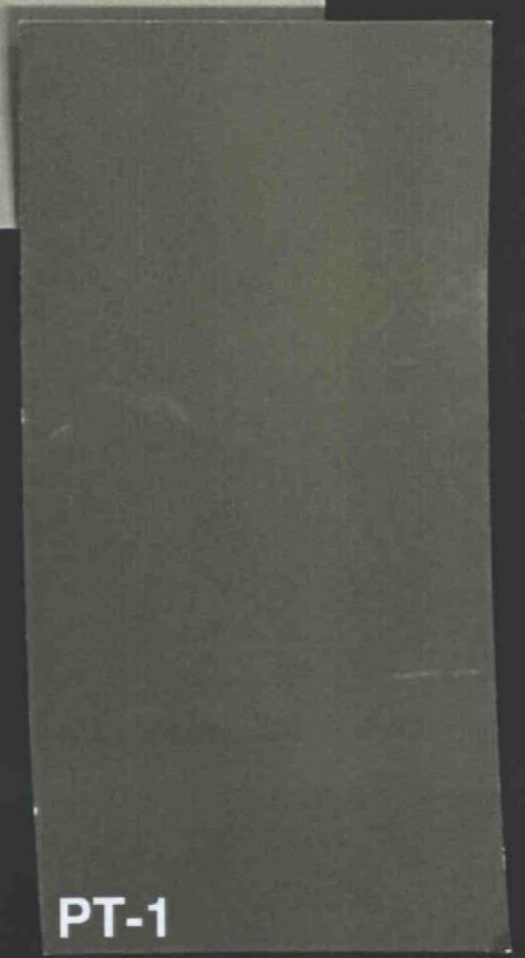
48%	9%	12%	0.28	0.24	0.28	0.24	0.27	1.5	2.00	
U-Value EN 673 (W/m²·K)	U-Value EN 673 (W/m²·K)	Solar Factor (g) EN 410	Argon	U-Value Imperial (Winter)	Air	SHGC	SC	Interior Reflectance	Exterior Reflectance	VLT

GL-1

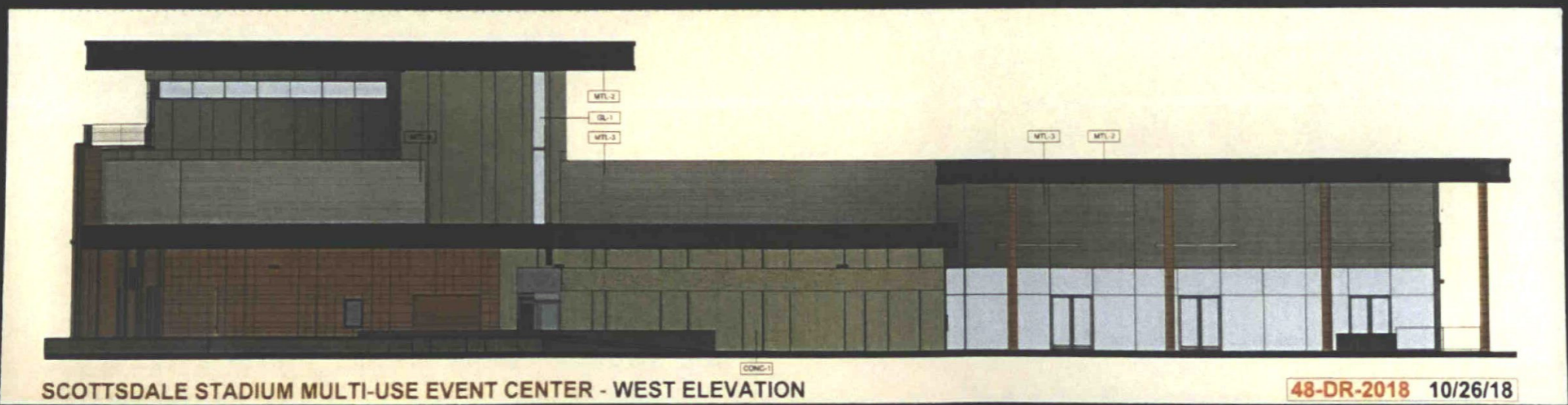
MTL-2



MTL-3

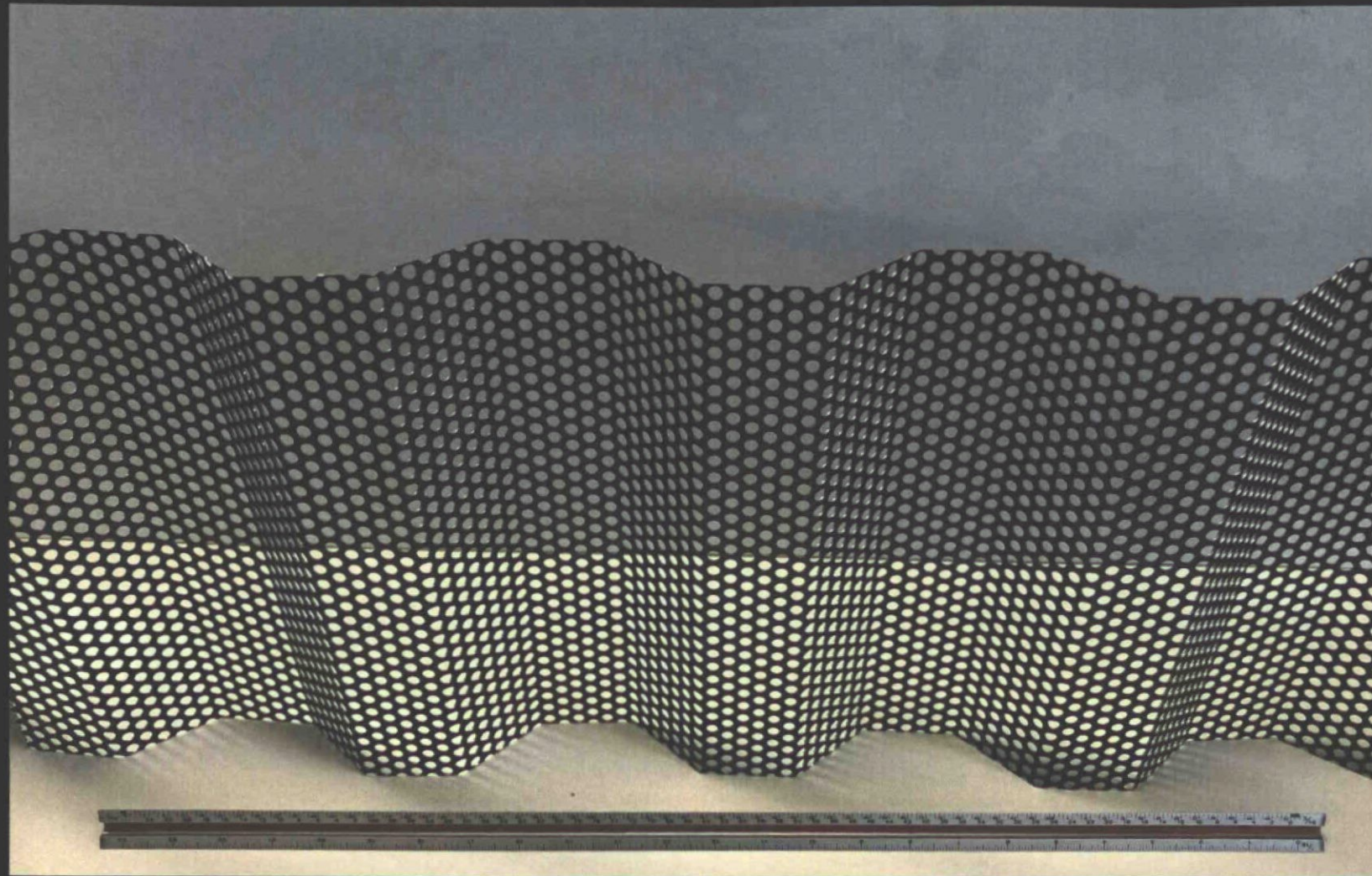


PT-1



SCOTTSDALE STADIUM MULTI-USE EVENT CENTER - WEST ELEVATION

48-DR-2018 10/26/18



MTL-7

CMU-1	MASONRY UNIT, TRENWYTH INDUSTRIES, TRENDSTONE GROUND FACE, COLOR: BEVERLY SPICE, STACKED BOND, RAKE AND TOOL VERTICAL JOINTS, FLUSH AND TOOL HORIZONTAL JOINTS	GL-1	1" INSULATED GLAZING UNIT WITH LOW-E COATING (SOLARBAN Z75 (2) ON OPTIBLUE + CLEAR GLASS
CONC-1	CAST-IN-PLACE BOARD FORMED CONCRETE WITH REVEALS, COLOR: NATURAL CONCRETE; PATTERN PENDING SAMPLES. BOARD FORMED CONCRETE MOCKUPS TO BE PROVIDED FOR REVIEW WITH CITY STAFF FOR CONSISTENCY WITH DESIGN INTENT PRIOR TO CONSTRUCTION. MOCKUP TO INCLUDE OPTION WITH A CONSISTENT BOARD WIDTH AND NARROWER REVEAL.	GL-4	1 1/4" INSULATED IMPACTED RESISTANT GLAZING UNIT WITH LOW-E COATING (SOLARBAN Z75 (2) ON OPTIBLUE + CLEAR GLASS
EFS-1	EXTERIOR INSULATION FINISH SYSTEM, COLOR AND REVEALS TO MATCH BOARD FORMED CONCRETE	MTL-2	PRE-FINISHED METAL PANEL, COLOR : MEDIUM GREY METALLIC PER VALSPAR)
		MTL-3	PRE-FINISHED METAL PANEL, COLOR: DOVE GREY PER MORIN
		MTL-6	CLEAR ANODIZED ALUMINUM
		MTL-7	PERFORATED METAL:20 GA. SCREEN (40.3% OPEN, 1/4" ROUND HOLE) W/ DECK PROFILE, VALSPAR MEDIUM GRAY METALLIC FINISH (OR EQUIVALANT)
		PT-2	COLOR TO MATCH MEDIUM GREY METALLIC (PER VALSPAR)

CITY LANDSCAPE NOTES

- AREAS OF DECOMPOSED GRANITE WITHOUT PLANT MATERIALS/GROUNDCOVERS SHALL NOT EXCEED DIMENSIONS OF MORE THAN 7 FEET IN ANY ONE DIRECTION, MEASURED BETWEEN PLANT CANOPIES AND/OR COVERAGE.
- A MINIMUM OF 50 PERCENT (UNLESS OTHERWISE STIPULATED BY THE DEVELOPMENT REVIEW BOARD, AND/OR THE ZONING ORDINANCE REQUIREMENTS) OF THE PROVIDED TREES SHALL BE MATURE TREES, PURSUANT TO THE CITY OF SCOTTSDALE'S ZONING ORDINANCE ARTICLE X, SECTION 10.301, AS DEFINED IN THE CITY OF SCOTTSDALE'S ZONING ORDINANCE ARTICLE III, SECTION 3.100.
- A SINGLE TRUNK TREE'S CALIPER SIZE, THAT IS TO BE EQUAL TO OR LESS THAN 4-INCHES, SHALL BE DETERMINED BY UTILIZING THE SMALLEST DIAMETER OF THE TRUNK 6-INCHES ABOVE FINISHED GRADE ADJACENT TO THE TRUNK. A TREE'S CALIPER SIZE, FOR SINGLE TRUNK TREES THAT ARE TO HAVE A DIAMETER GREATER THAN 4-INCHES, SHALL BE DETERMINED BY UTILIZING THE SMALLEST DIAMETER OF THE TRUNK 12-INCHES ABOVE FINISHED GRADE ADJACENT TO THE TRUNK. A MULTIPLE TRUNK TREE'S CALIPER SIZE IS MEASURED AT 6" ABOVE THE LOCATION THAT THE TRUNK SPLIT ORIGINATES, OR 6" ABOVE FINISHED GRADE IF ALL TRUNKS ORIGINATE FROM THE SOIL.
- AREA WITHIN THE SIGHT VISIBILITY TRIANGLES IS TO BE CLEAR OF LANDSCAPING, SIGNS, OR OTHER VISIBILITY OBSTRUCTIONS WITH A HEIGHT GREATER THAN 1.5 FEET. TREES WITHIN THE SIGHT TRIANGLE SHALL HAVE A SINGLE TRUNK AND A CANOPY THAT BEGINS AT 8 FEET IN HEIGHT UPON INSTALLATION. ALL HEIGHTS ARE MEASURED FROM NEAREST STREET LINE ELEVATION.
- ANY NEW RETENTION/DETENTION BASINS SHALL BE CONSTRUCTED SOLELY FROM APPROVED CIVIL PLANS. ANY ALTERATION OF THE APPROVED DESIGN (ADDITIONAL FILL, BOULDERS, ETC.) SHALL REQUIRE ADDITIONAL FINAL PLANS STAFF REVIEW AND APPROVAL.
- ALL RIGHTS-OF-WAY ADJACENT TO THIS PROPERTY SHALL BE LANDSCAPED AND MAINTAINED BY THE PROPERTY OWNER.
- PRIOR TO THE ESTABLISHMENT OF WATER SERVICE, NON-RESIDENTIAL PROJECTS WITH AN ESTIMATED ANNUAL WATER DEMAND OF TEN (10) ACRE-FEET OR MORE SHALL SUBMIT A CONSERVATION PLAN IN CONFORMANCE WITH SECTIONS 49-245 THROUGH 49-248 OF THE CITY CODE TO THE WATER CONSERVATION OFFICE.
- TURF SHALL BE LIMITED TO THE MAXIMUM AREA SPECIFIED IN SECTIONS 49-245 THROUGH 49-248 OF THE CITY CODE AND SHALL BE SHOWN ON LANDSCAPE PLANS SUBMITTED AT THE TIME OF FINAL PLANS.
- NO LIGHTING IS APPROVED WITH THE SUBMITTAL.
- THE APPROVAL OF THESE PLANS RECOGNIZES THE CONSTRUCTION OF A LOW VOLTAGE SYSTEM AND DOES NOT AUTHORIZE ANY VIOLATION OF THE CURRENT CITY OF SCOTTSDALE ADOPTED ELECTRICAL CODE.
- THE LANDSCAPE SPECIFICATION SECTION(S) OF THESE PLANS HAVE NOT BEEN REVIEWED AND SHALL NOT BE PART OF THE CITY OF SCOTTSDALE'S APPROVAL.
- ALL SIGNS REQUIRE SEPARATE PERMITS AND APPROVALS.
- NEW LANDSCAPING, INCLUDING SALVAGED PLANT MATERIAL, AND LANDSCAPING INDICATED TO REMAIN, WHICH IS DESTROYED, DAMAGED, OR EXPIRES DURING CONSTRUCTION SHALL BE REPLACED WITH LIKE SIZE, KIND, AND QUANTITY PRIOR TO THE ISSUANCE OF THE CERTIFICATE OF OCCUPANCY / LETTER OF ACCEPTANCE TO THE SATISFACTION OF THE INSPECTION SERVICES STAFF.

CITY DESIGN GUIDELINES

THE CITY SIGHT DISTANCE LINES AT INTERSECTIONS AND EGRESS DRIVES WILL DICTATE THE MATURE HEIGHT AND LAYOUT REQUIREMENTS OF PLANT MATERIAL ALONG THE EDGES AND WITHIN THE MEDIANS. THIS INCLUDES 25'-0" BY 25'-0" "RIGHT-OF-WAY CORNERS" AND "INTERSECTION TRIANGLES" THAT ARE BASED ON THE SPEED OF THE STREET. THE INTERSECTION TRIANGLES ARE DESIGNED BASED UPON OSBORN RD AND DRINKWATER BLVD'S 4-LANE ROADWAY AT 35 MPH SPEED LIMIT. ALL UNDERSTORY PLANT MATERIAL LOCATED WITHIN THE SITE VISIBILITY TRIANGLES WILL HAVE A MATURE HEIGHT OF 18 INCHES. THE SIZE OF ALL TREES DESIGNED WITHIN THE SITE DISTANCE TRIANGLES ARE 48" BOX AND SHALL HAVE A CLEAR CANOPY HEIGHT OF 8'-0" ABOVE CURB HEIGHT.

- BEYOND THE SITE VISIBILITY TRIANGLES, SPECIAL ATTENTION WILL BE PAID TO THE FOLLOWING APPLICATIONS OF THE CITY'S DESIGN STANDARD & POLICY MANUAL (DSPM) LANDSCAPE DESIGN REQUIREMENTS TO ENSURE PUBLIC SAFETY:
 - TREE DENSITY - LARGER TREES SHALL BE SPACED AT A MINIMUM OF 25'-0"
 - TREES SHALL NOT BE PLACED WITHIN 15'-0" OF STREET LIGHT POLES
 - TREES SHALL NOT BE PLACED WITHIN 7'-0" OF UNDERGROUND UTILITY PIPES OR CONDUITS
 - TREES SHALL NOT BE LOCATED WITHIN 10'-0" OF EXISTING PRIVATE WALLS
 - TREES SHALL NOT BE PLACED WITHIN THE PUBLIC UTILITY EASEMENTS (P.U.E.)
 - THORNY CACTI SHALL NOT BE LOCATED WITHIN 4'-0" OF A WALKWAY OR CURB
 - SHRUBS SHALL NOT BE PLACED WITHIN 2'-0" OF A WALKWAY OR CURB
 - SHRUBS SHALL NOT BE PLACED WITHIN 5'-0" OF TREES
 - SHRUB SPACING SHALL BE NO LESS THAN THE MATURE SIZE OF THE PLANT
 - SHRUBS WITHIN THE RIGHT-OF-WAY SHALL BE SELECTED FROM THE ADWR'S PLANT LIST FOR THE PHOENIX ACTIVE MANAGEMENT AREA. NO TURF SHALL BE PLANTED IN THE RIGHT-OF-WAY.
 - NO BOULDERS SHALL BE LOCATED WITHIN 10'-0" OF A CURB
 - NO BOULDERS SHALL BE LOCATED WITHIN 4'-0" OF A WALKWAY
 - NO BOULDERS SHALL BE LOCATED WITHIN THE PUBLIC UTILITY EASEMENTS
 - THE FINISHED LANDSCAPE GRADE WITH DECOMPOSED GRANITE SHALL BE SMOOTH, UNIFORM, AND A MINIMUM OF 2" BELOW TOP OF GRADE

IRRIGATION NOTES

- THE POINT OF CONNECTION FOR THE IRRIGATION SYSTEM IS LOCATED NORTH OF OSBORN ROAD ON THE SOUTHWEST CORNER OF THE PRACTICE FIELD ALONG WITH AN EXISTING SCORPIO COLLAR.
- THE IRRIGATION SYSTEM WILL BE MODIFIED TO WATER THE EXISTING LANDSCAPE, NEW TREES AND NEW SHRUBS, KEEPING THE TURF, TREES, AND SHRUBS ON SEPARATE SYSTEMS.

ADWR-PHX PLANT LIST COMPLIANCE

PER C.O.S. REVISED CODE SEC. 49-245, THIS PROJECT IS EXEMPT FROM THIS PROVISION SINCE IT IS A PUBLIC RECREATIONAL FACILITY WITH TURF AREA GREATER THAN TEN (10) ACRES. THEREFORE, THIS FACILITY IS REGULATED AS A LARGE TURF FACILITY UNDER THE CURRENT ADWR MANAGEMENT PLAN FOR THE PHOENIX ACTIVE MANAGEMENT AREA.

NOTE: ALL PLANT MATERIAL PROPOSED FOR THIS PROJECT IS PART OF THE CURRENT ADWR-PHX PLANT LIST.

LANDSCAPE AREA (PHASE 1 ONLY)

ON-SITE: 7,205 SF (INCLUDING 1,638 SF OF EXISTING TURF TO BE REPAIRED DUE TO CONSTRUCTION DISTURBANCE).
STREET RIGHT-OF-WAY: 558 SF
PARKING LOT: 93 SF

LANDSCAPE SCHEDULE NOTES

- QUANTITIES ARE SHOWN FOR REFERENCE ONLY. CONTRACTOR SHALL COMPLETE QUANTITY TAKE-OFF PER PLAN.
- ANY RIP-RAP SHOWN ON CIVIL SHEETS IS NOT PART OF THE QUANTITIES SHOWN IN THE LANDSCAPE SCHEDULE. CONTRACTOR SHALL COORDINATE THE COLOR SELECTION OF THE RIP-RAP TO MATCH THE DECOMPOSED GRANITE COLOR SHOWN IN THE LANDSCAPE SCHEDULE.

LANDSCAPE SCHEDULE

TREES	QTY	BOTANICAL / COMMON NAME	CONT	CAL
	3	ACACIA WILLARDIANA PALO BLANCO	48" BOX	3'-4"
	1	PISTACIA HYBRID 'RED PUSH' RED PUSH PISTACHE	48" BOX	3'-4"
	1	QUERCUS FUSIFORMIS 'JOAN LIONETTI' JOAN LIONETTI LIVE OAK	48" BOX	5'-7"
SHRUBS	QTY	BOTANICAL / COMMON NAME	CONT	
	79	EREMOPHILA MACULATA 'VALENTINE' SPOTTED EMU BUSH	5 GAL	
	13	LEUCOPHYLLUM LANGMANIAE LANGMAN'S SAGE	5 GAL	
	96	MUHLENBERGIA CAPILLARIS 'REGAL MIST TM' REGAL MIST MUHLY	5 GAL	
	29	RUELLIA BRITTONIANA BLUE BELLS	5 GAL	
	28	TECOMA X 'SPARKY' SPARKY TECOMA	5 GAL	
ACCENTS	QTY	BOTANICAL / COMMON NAME	CONT	
	16	ALOE BARBADENSIS YELLOW FLOWERING ALOE	15 GAL	
	22	ALOE X 'BLUE ELF' BLUE ELF ALOE	5 GAL	
GROUNDCOVER	QTY	BOTANICAL / COMMON NAME	CONT	
	16	LANTANA X ORANGE ORANGE LANTANA	5 GAL	
	2,600 SF	BERMUDA HYBRID - 419	SOD	
INERT MATERIALS	QTY	DESCRIPTION / COLOR	SIZE/DEPTH	
	15	BOULDERS SURFACE SELECT DECORATIVE BOULDERS	2 TON (3' X 4' X 3') BURY FOR NATURAL LOOK PER DETAIL	
	5,722 SF	DECOMPOSED GRANITE 'MADISON GOLD'	1/2" SCREENED 2" DEPTH	



City of Scottsdale
Stadium Multi-Use Event Center
7408 E Osborn Rd, Scottsdale, AZ 85251

REVISIONS

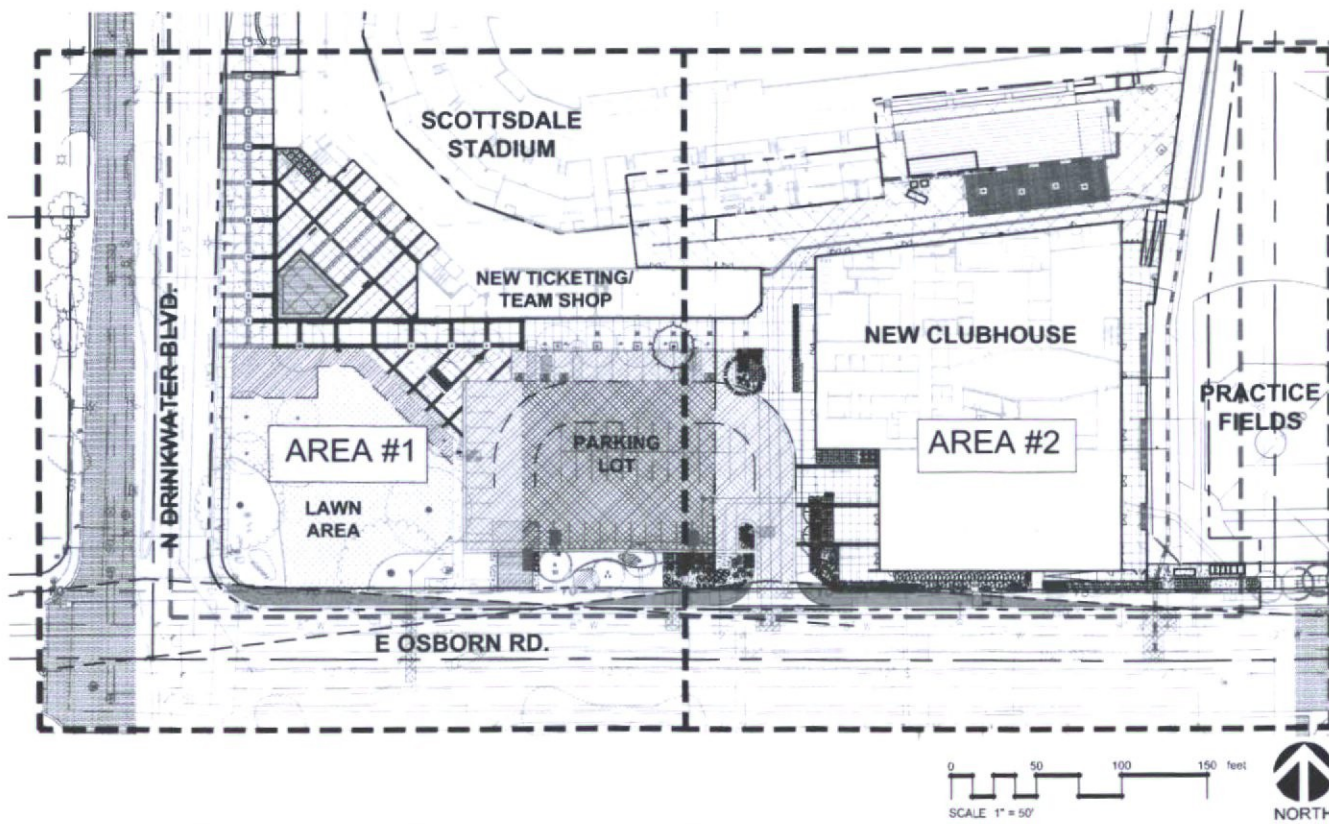
No.	Description	Date

DRB SUBMITTAL
Copyright © 2018 by DWL Architects + Planners, Inc.

LANDSCAPE COVER

DATE: 01/31/19 PROJECT NUMBER: 1821.00

SHEET LAYOUT PLAN



OWNER / DEVELOPER

CITY OF SCOTTSDALE
7447 EAST INDIAN SCHOOL RD. SUITE 205
SCOTTSDALE, ARIZONA 85251
CONTACT: ANNA LEYVA
PHONE: (480) 312.7769
EMAIL: ALEYVA@SCOTTSDALEAZ.GOV

SAN FRANCISCO GIANTS BASEBALL CLUB
AT&T PARK
24 WILLIE MAYS PLAZA
SAN FRANCISCO, CALIFORNIA 94107
CONTACT: JON KNORPP
PHONE: (414) 972.1762
EMAIL: JKNORPP@SFGIANTS.COM

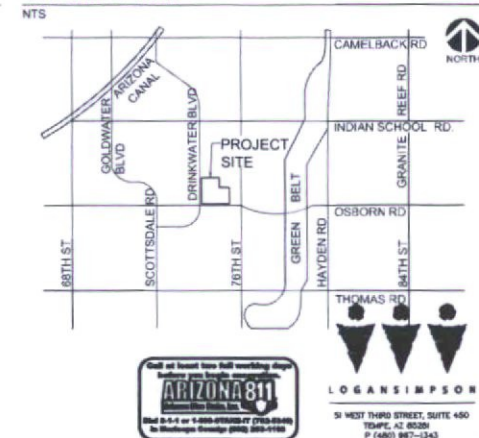
LANDSCAPE ARCHITECT

LOGAN SIMPSON DESIGN, INC.
51 W. THIRD ST. SUITE 450
TEMPE, AZ 85281
CONTACT: JERRY MOAR
PHONE: (480) 967-1343
EMAIL: JMOAR@LOGANSIMPSON.COM

PROJECT SITE DATA

ZONING: R-5 DO / OS
OVERLAY: DOWNTOWN INFILL INCENTIVE DISTRICT
CITY PROJECT #: 48-DR-2018
CASE #: 48-DR-2018
PLAN CHECK #:

VICINITY MAP



ALL LANDSCAPE AREAS AND MATERIALS, INCLUDING THOSE LOCATED IN PUBLIC RIGHTS-OF-WAY, SHALL BE MAINTAINED IN A HEALTHY, NEAT, CLEAN AND WEED-FREE CONDITION. ANSI A300 STANDARD PRACTICES FOR PRUNING, SUPPORT SYSTEMS, AND SAFETY SHALL BE USED FOR MAINTENANCE CRITERIA. THIS SHALL BE THE RESPONSIBILITY OF THE (PROPERTY OWNER / DEVELOPER / HOA).

LANDSCAPE PLAN APPROVAL

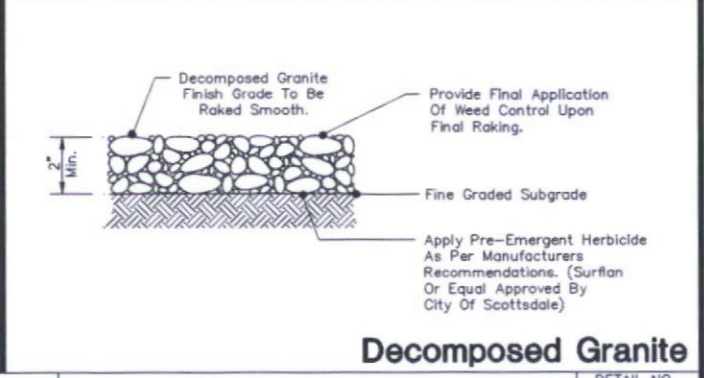
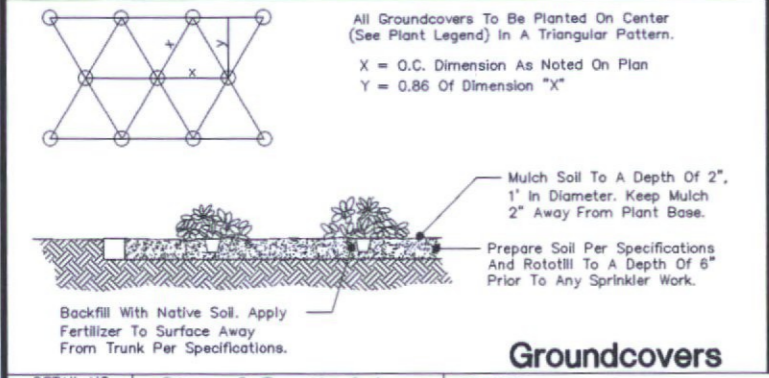
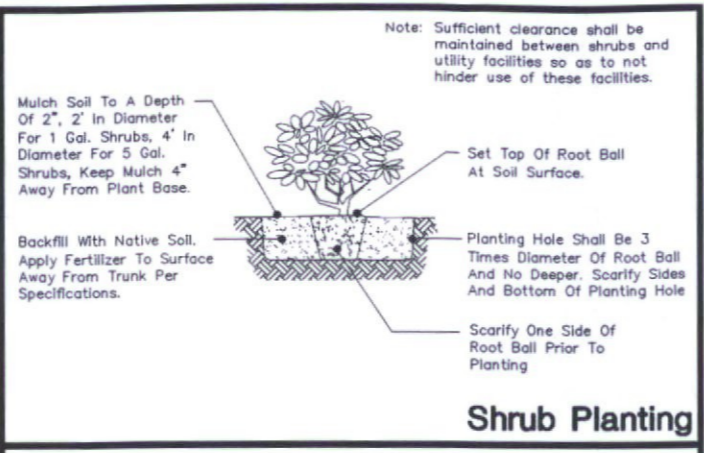
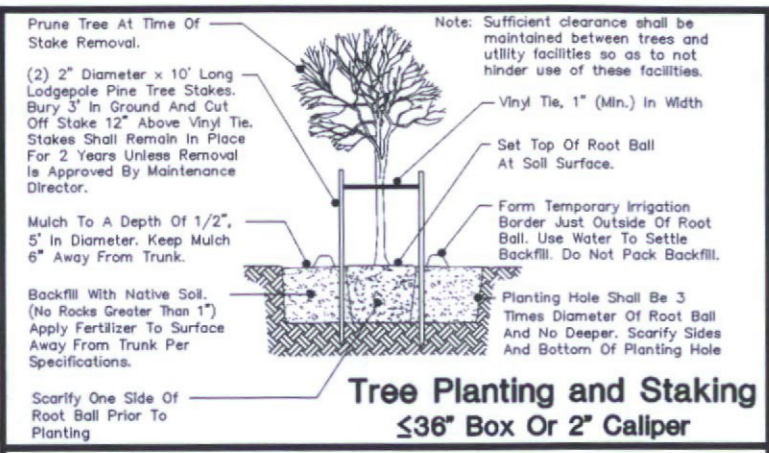
CASE #	APPROVED BY	DATE

CONSTRUCTION AND INSTALLATION SHALL BE IN ACCORDANCE WITH THIS PLAN AND ALL DEVIATIONS WILL REQUIRE REAPPROVAL. THE CITY WILL NOT ISSUE A CERTIFICATE OF OCCUPANCY UNTIL INSPECTION SERVICES STAFF APPROVES THE LANDSCAPE INSTALLATION.

NOTE TO CONTRACTOR: LOGAN SIMPSON DESIGN, INC. HAS ENDEAVORED TO PROVIDE ACCURATE UTILITY INFORMATION BASED ON THE MOST CURRENT DATA AVAILABLE. THE CONTRACTOR SHALL VERIFY THE LOCATION OF UNDERGROUND UTILITIES SHOWN ON THIS DRAWING ON THE FIELD WITH REFERENCE TO THE CITY AND UTILITY PROVIDER'S RECORD DRAWINGS. USE OF THE INFORMATION CONTAINED IN THIS INSTRUMENT FOR OTHER THAN THE SPECIFIC PURPOSE FOR WHICH IT WAS INTENDED AND FOR OTHER THAN THE CLIENT FOR WHOM IT WAS PREPARED IS FORBIDDEN UNLESS EXPRESSLY PERMITTED IN WRITING IN ADVANCE TO LOGAN SIMPSON DESIGN, INC. AND LOGAN SIMPSON DESIGN, INC. SHALL HAVE NO LIABILITY TO ANY USER OF THIS INFORMATION WITHOUT THEIR WRITTEN CONSENT.

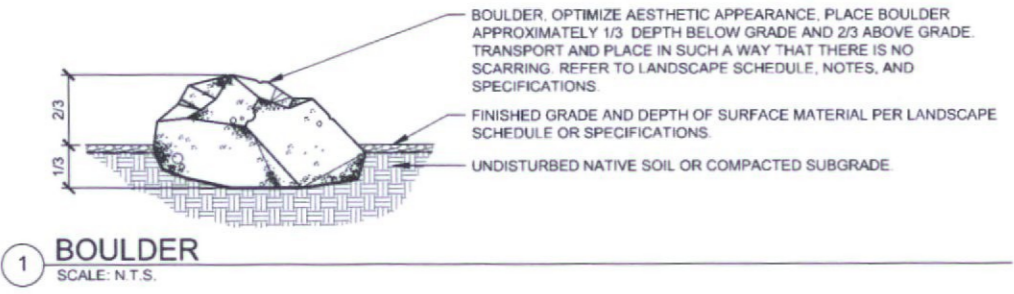
Jan 31, 2019 10:38am
 mperera
 N:\projects\2018\185216 Scottsdale Multi-Use Event Center Improv\40-Design\41-CAD\1-Sheet Files\DRB\185216LC1-1.dwg

N:\projects\2018\185216 Scottsdale Multi-use Event Center Improv\40-Design\41-CAO\1-Sheet Files\DRB\185216LL2-1.dwg
 mperera
 Jan 31, 2019 - 10:39am
 REVISED 7/29/96



DETAIL NO. 2620-1	City of Scottsdale Standard Details	APPROVED	LANDSCAPE DETAILS	DETAIL NO. 2620-1
-------------------	-------------------------------------	----------	-------------------	-------------------

NOTE: DETAIL RETRIEVED FROM CITY OF SCOTTSDALE'S WEBSITE. REFER TO CITY OF SCOTTSDALE STANDARD DETAILS FOR FURTHER INFORMATION AND/OR CLARITY.



PLANT PALETTE

 ACACIA WILLARDIANA PALO BLANCO	 PISTACIA HYBRID 'RED PUSH' RED PUSH PISTACHE	 QUERCUS FUSIFORMIS 'JOAN LIONETTI' JOAN LIONETTI LIVE OAK	
 EREMOPHILA MACULATA 'VALENTINE' VALENTINE EMU BUSH	 LEUCOPHYLLUM LANGMANIAE LANGMAN'S SAGE	 MUHLENBERGIA CAPILLARIS 'REGAL MIST' TM REGAL MIST MUHLY	 RUELLIA BRITTONIANA BLUE BELLS
 TECOMA X 'SPARKY' SPARKY TECOMA	 ALOE X 'BLUE ELF' BLUE ELF ALOE	 ALOE BARBADENSIS YELLOW FLOWERING ALOE	 LANTANA X 'ORANGE' ORANGE LANTANA



City of Scottsdale
Stadium Multi-Use Event Center
 7408 E Osborn Rd, Scottsdale, AZ 85251

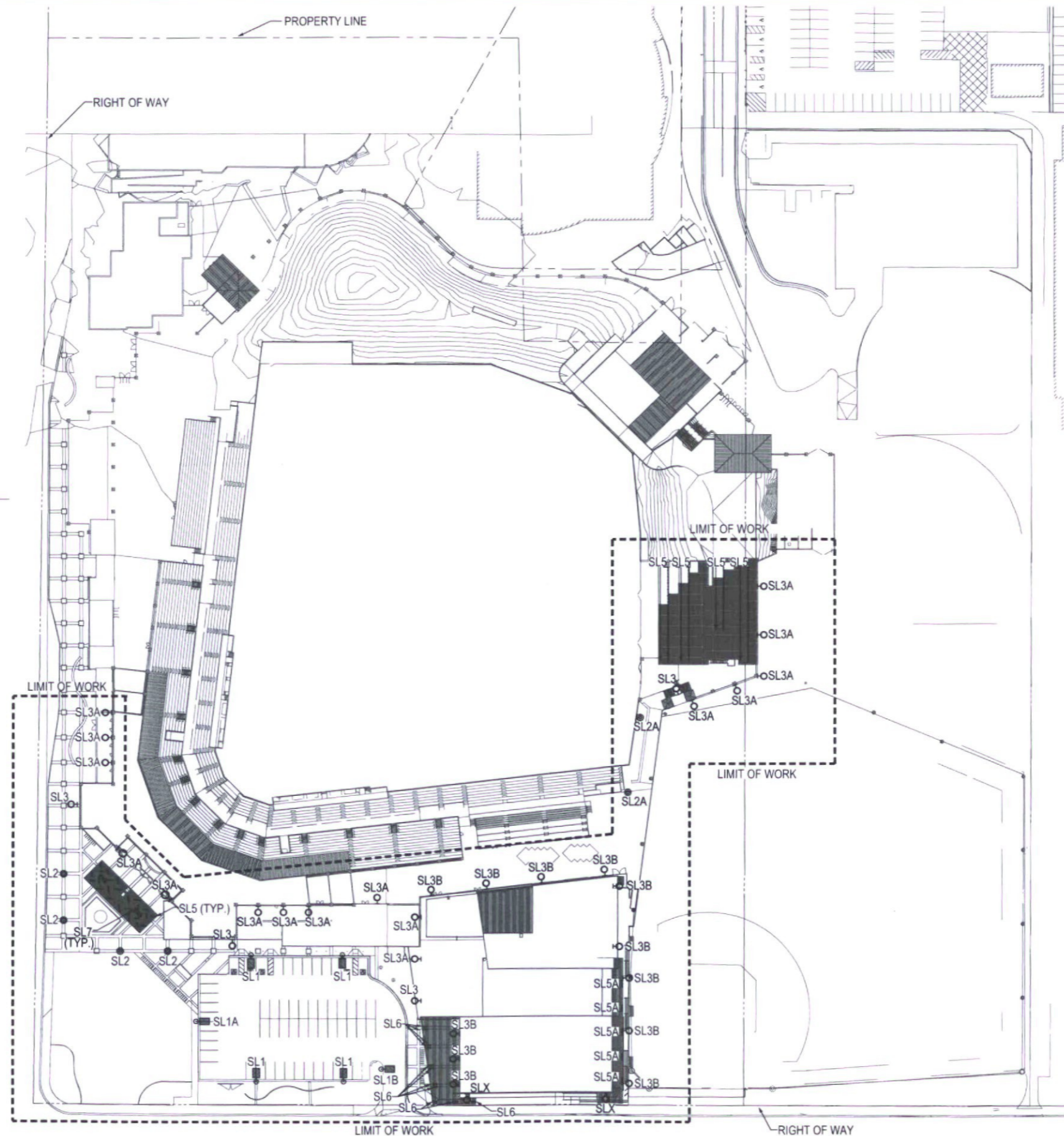
REVISIONS		
No.	Description	Date
DRB SUBMITTAL		
COPYRIGHT © 2018 DWL ARCHITECTS + PLANNERS, INC.		

SHEET TITLE	
LANDSCAPE DETAILS	
SHEET NUMBER	
LL2.1	
DESIGNED BY	REVIEWED BY
JMMP/PAK	JMWC
DATE	PROJECT NUMBER
01/31/19	1821.00



NOTE TO CONTRACTOR: LOGAN SIMPSON DESIGN INC. HAS ENDEAVORED TO PROVIDE ACCURATE UTILITY INFORMATION BASED ON THE MOST CURRENT DATA AVAILABLE. THE CONTRACTOR SHALL VERIFY THE LOCATION OF UNDERGROUND UTILITIES SHOWN OR NOT SHOWN ON THESE PLANS WITH RESPECT TO THE AND ADJUST PRIOR TO CONSTRUCTION. USE OF THE INFORMATION CONTAINED IN THIS INSTRUMENT FOR OTHER THAN THE SPECIFIC PURPOSE FOR WHICH IT WAS INTENDED AND FOR OTHER THAN THE CLIENT FOR WHOM IT WAS PREPARED IS FORBIDDEN UNLESS EXPRESSLY PERMITTED BY WRITING IN ADVANCE TO LOGAN SIMPSON DESIGN INC. AND LOGAN SIMPSON DESIGN INC. SHALL HAVE NO LIABILITY TO ANY USER OF THIS INFORMATION WITHOUT THEIR WRITTEN CONSENT.

12/13/2018 9:40:21 AM



ELECTRICAL SITE PLAN

ORTH SCALE 1" = 60'



DWL
 ARCHITECTS - PLANNERS INC.
 2333 N. Central Ave.
 Phoenix, AZ 85004
 tel 602.264.9731
 dwlarchitects.com

POPULOUS

City of Scottsdale
Stadium Multi-Use Event Center
 7408 E Osborn Rd, Scottsdale, AZ 85251



REVISIONS

No.	Description	Date

DRB

©COPYRIGHT 2018
 DWL ARCHITECTS - PLANNERS INC.

KEY:

S	T	U	V
O	P	Q	R
L	M	N	K
E	F	G	H
A	B	C	D

ELECTRICAL SITE PLAN

E-001

DRAWN BY	AL	REVIEWED BY	AJB
DATE	12/27/18	PROJECT NUMBER	1821.00

12/13/2018 9:40:21 AM

Pursuit™ - Direct (Down)

Table with columns for Section Length, Luminaire, and various beam spread and height options (3000, 4000, 5000, 6000, 8000, 10000). Includes luminaire types like SM, AS, WC, WW, SH, and AS.

ARCHITECTURAL AREA LIGHTING 17760 Rowland Street, City of Industry, CA 91748

Pursuit™ - Direct (Down)

Table with columns for Section Length, Luminaire, and various beam spread and height options (3000, 4000, 5000, 6000, 8000, 10000). Includes luminaire types like SM, AS, WC, WW, SH, and AS.

ARCHITECTURAL AREA LIGHTING 17760 Rowland Street, City of Industry, CA 91748

Pursuit™ - Direct (Down)

Table with columns for Section Length, Luminaire, and various beam spread and height options (3000, 4000, 5000, 6000, 8000, 10000). Includes luminaire types like SM, AS, WC, WW, SH, and AS.

ARCHITECTURAL AREA LIGHTING 17760 Rowland Street, City of Industry, CA 91748

Pursuit™ - Direct (Down)

Table with columns for Section Length, Luminaire, and various beam spread and height options (3000, 4000, 5000, 6000, 8000, 10000). Includes luminaire types like SM, AS, WC, WW, SH, and AS.

ARCHITECTURAL AREA LIGHTING 17760 Rowland Street, City of Industry, CA 91748

Pursuit™ - Direct (Down)

Table with columns for Section Length, Luminaire, and various beam spread and height options (3000, 4000, 5000, 6000, 8000, 10000). Includes luminaire types like SM, AS, WC, WW, SH, and AS.

ARCHITECTURAL AREA LIGHTING 17760 Rowland Street, City of Industry, CA 91748

Pursuit™ - Direct (Down)

Table with columns for Section Length, Luminaire, and various beam spread and height options (3000, 4000, 5000, 6000, 8000, 10000). Includes luminaire types like SM, AS, WC, WW, SH, and AS.

ARCHITECTURAL AREA LIGHTING 17760 Rowland Street, City of Industry, CA 91748



POPULOUS

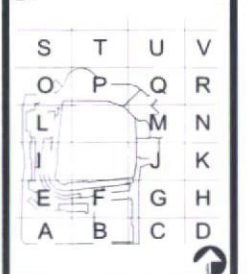
City of Scottsdale Stadium Multi-Use Event Center 7408 E Osborn Rd, Scottsdale, AZ 85251



REVISIONS

Table with columns: No, Description, Date

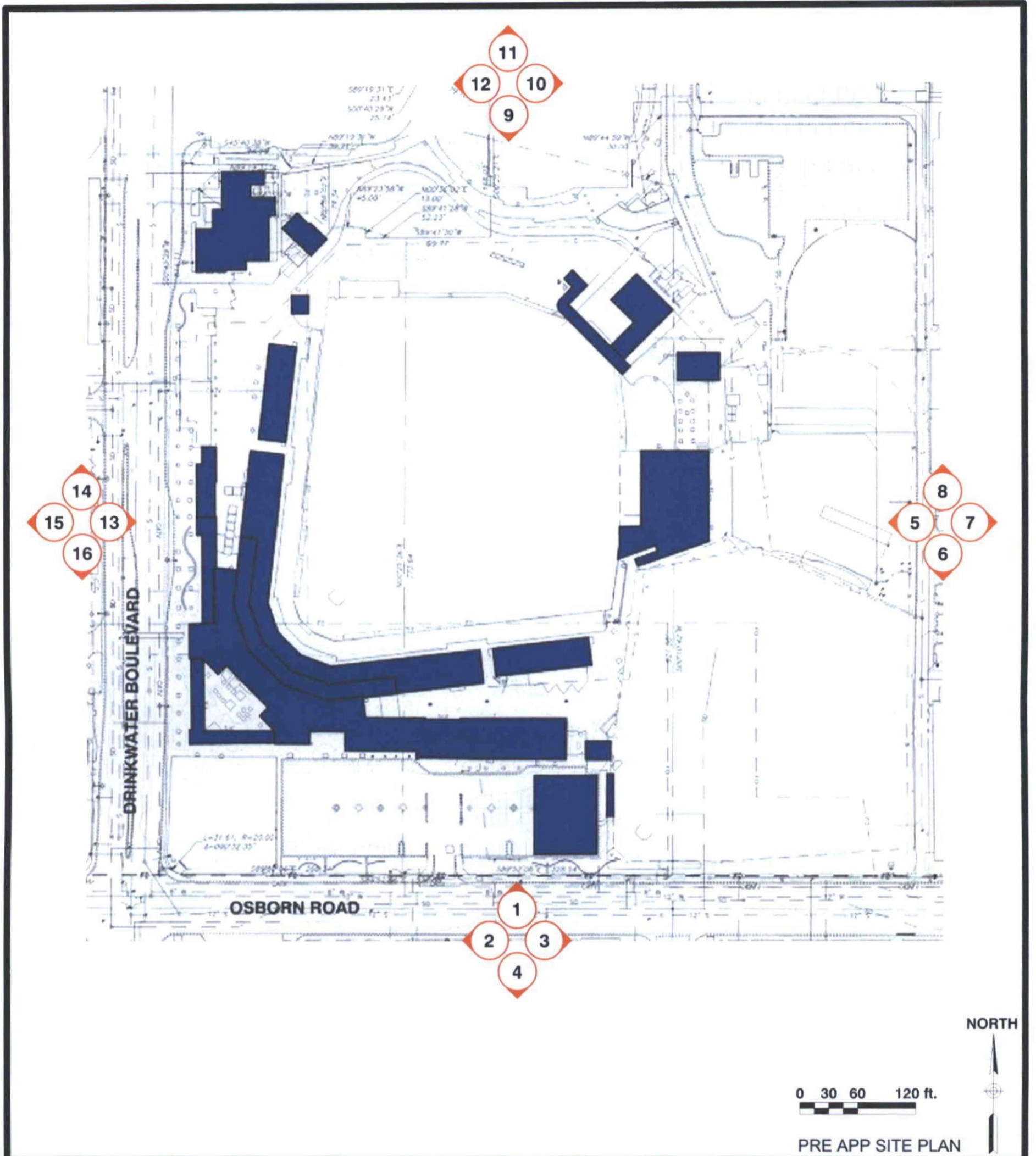
DRB © Copyright 2018 DWL ARCHITECTS + PLANNERS, INC.



LIGHTING CUT SHEETS

E-007

DATE: 12/27/18 PROJECT NUMBER: 1821.00



DRAWING DESCRIPTION:
SITE PLAN SHOWS EXISTING CONDITION PRIOR TO REDEVELOPMENT

	<p>CITY OF SCOTTSDALE</p> <p>SCOTTSDALE STADIUM MULTI-USE EVENT CENTER</p> <p>7408 East Osborn Road Scottsdale, Arizona 85251-6424</p>
	<p>2333 N. Central Ave. Phoenix, AZ 85004 tel 602.264.9731 dwlarchitects.com</p>

SCALE:	DATE: 09.01.2018
REFERENCE SHEET:	PROJECT NUMBER: 1821.00
ISSUED WITH:	
SHEET NUMBER: ***-01	



1



2

SITE PHOTOS

DRAWING DESCRIPTION:

SITE PLAN SHOWS EXISTING CONDITION PRIOR TO REDEVELOPMENT

	<p>CITY OF SCOTTSDALE</p> <p>SCOTTSDALE STADIUM MULTI-USE EVENT CENTER</p> <p>7408 East Osborn Road Scottsdale, Arizona 85251-6424</p>
	<p>2333 N. Central Ave. Phoenix, AZ 85004 tel 602.264.9731 dwlarchitects.com</p>

SCALE:	DATE: 09.01.2018
REFERENCE SHEET:	PROJECT NUMBER: 1821.00
ISSUED WITH:	
SHEET NUMBER: ***-02	



3



4

SITE PHOTOS

DRAWING DESCRIPTION:

SITE PLAN SHOWS EXISTING CONDITION PRIOR TO REDEVELOPMENT



CITY OF SCOTTSDALE
**SCOTTSDALE STADIUM
 MULTI-USE EVENT CENTER**
 7408 East Osborn Road
 Scottsdale, Arizona 85251-6424

SCALE:	DATE: 09.01.2018
REFERENCE SHEET:	PROJECT NUMBER: 1821.00
ISSUED WITH:	
SHEET NUMBER: ***-03	



SITE PHOTOS

DRAWING DESCRIPTION:

SITE PLAN SHOWS EXISTING CONDITION PRIOR TO REDEVELOPMENT



CITY OF SCOTTSDALE
**SCOTTSDALE STADIUM
 MULTI-USE EVENT CENTER**

7408 East Osborn Road
 Scottsdale, Arizona 85251-6424

SCALE:	DATE: 09.01.2018
REFERENCE SHEET:	PROJECT NUMBER: 1821.00
ISSUED WITH:	
SHEET NUMBER: ***-04	



15



16

SITE PHOTOS

DRAWING DESCRIPTION:

SITE PLAN SHOWS EXISTING CONDITION PRIOR TO REDEVELOPMENT



CITY OF SCOTTSDALE
**SCOTTSDALE STADIUM
MULTI-USE EVENT CENTER**
7408 East Osborn Road
Scottsdale, Arizona 85251-6424

SCALE:	DATE: 09.01.2018
REFERENCE SHEET:	PROJECT NUMBER: 1821.00
ISSUED WITH:	
SHEET NUMBER: ***-09	