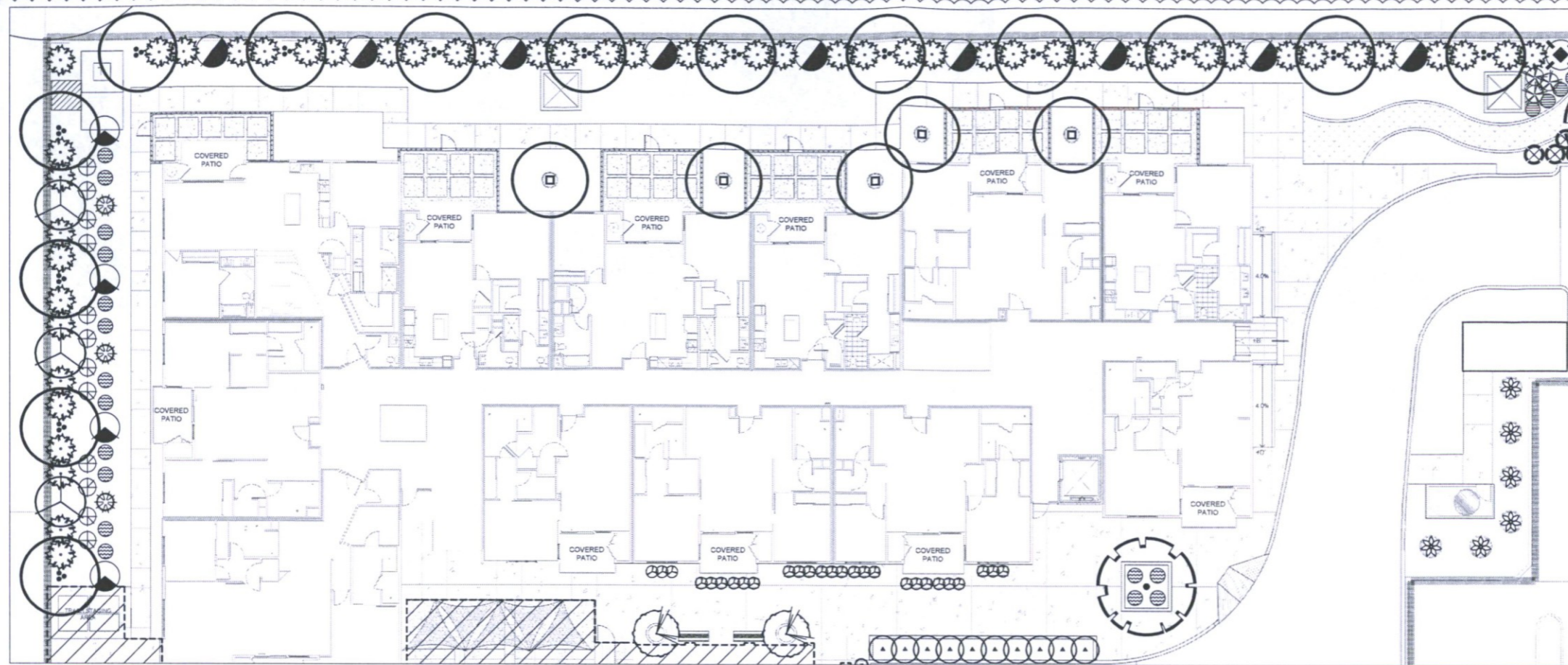
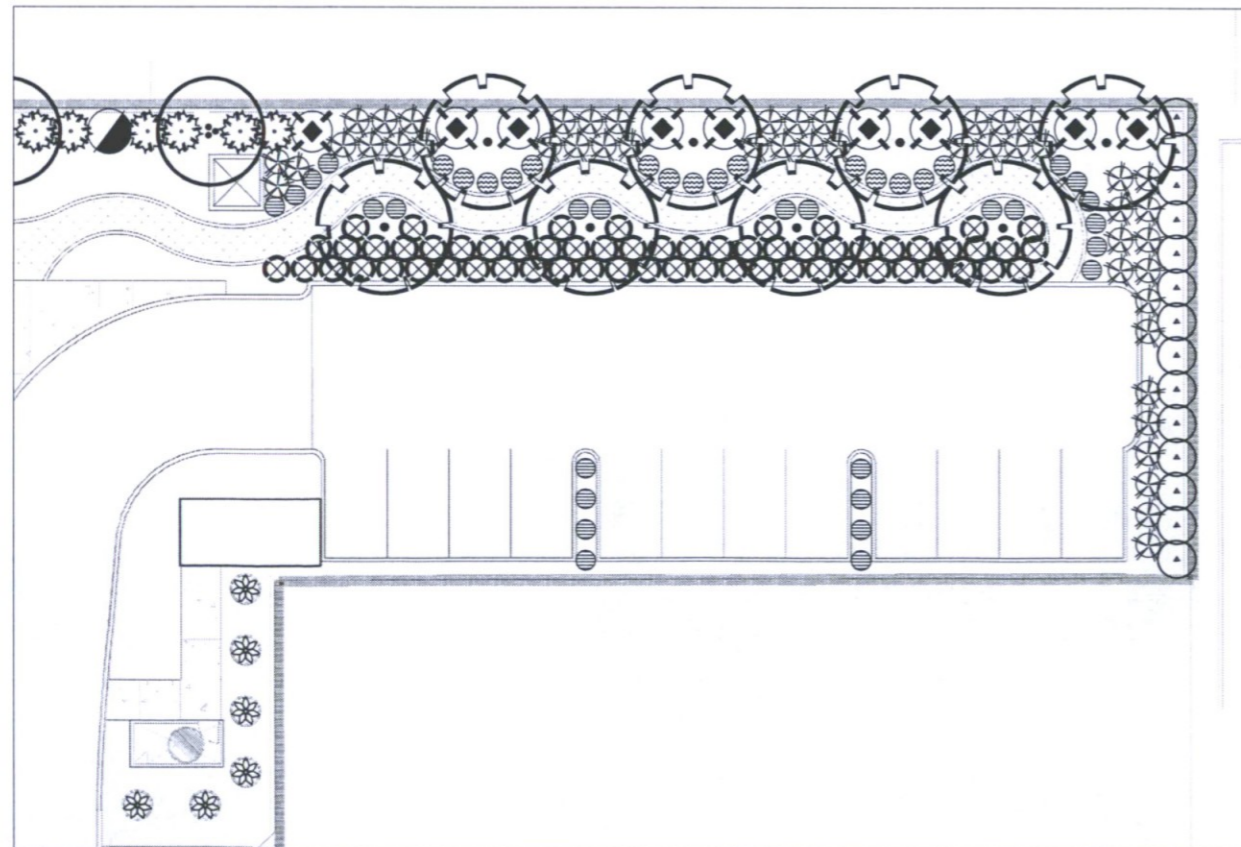


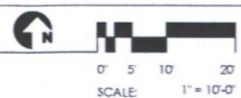
Final Approved Stamped Plans
Full Size



LANDSCAPE PLAN



LANDSCAPE PLAN



PLANT PALETTE

TREES

	WASHINGTONIA ROBUSTA	SIZE/QTY	18'-20' HT. 02
	MEXICAN FAN PALM	SKINNED	
	PARKINSONIA xDESERT MUSEUM	4" CAL 05	
	DESERT MUSEUM PALO VERDE	3" CAL 05	
	BAUHINIA LUNARIODIDES	3" CAL 05	
	ANACARDIUM ORCHID	3" CAL 05	
	PROSOPIS GLANDULOSA	3"-4" CAL 13	
	TEXAS HONEY MESQUITE	SINGLE-TRUNK	
	DALBERGIA SISSOO	3"-4" CAL 14	
	SISSOO TREE	SINGLE-TRUNK	
	ACACIA ANEURA	3" CAL 07	
	MULGA ACACIA	SINGLE-TRUNK	
	MYRTUS COMMUNIS 'BOETTICA'	3" CAL 08	
	TWISTED MYRTLE	SINGLE-TRUNK	

SHRUBS

	CAESALPINIA MEXICANA	SIZE/QTY	5 GAL 04
	RED BIRD OF PARADISE		
	CALLIANDRA ERIOPHYLLA	5 GAL 11	
	PINK FAIRY DUSTER	5 GAL 07	
	RUELLIA PENINSULARIS		
	BAJA RUELLIA		
	EREMOPHYLLA MACULATA 'VALENTINE'	5 GAL 18	
	VALENTINE EMU BUSH		
	CALLIANDRA CALIFORNICA	5 GAL 04	
	BAJA FAIRY DUSTER		
	VAUQUELINIA CALIFORNICA	5 GAL 24	
	ARIZONA ROSEWOOD		
	TECOMA 'ORANGE JUBILEE'	5 GAL 23	
	ARIZONA ORANGE BELLS		
	MUHLENBERGIA RIGENS	5 GAL 61	
	DEER GRASS		
	CONVOLVULUS CNEORUM	5 GAL 34	
	BUSH MORNING GLORY		
	TECOMA STANS 'GOLD STAR'	5 GAL 59	
	GOLD STAR TECOMA		
	DERMATOPHYLLUM SECUNDIFLORA	15 GAL 09	
	TEXAS MOUNTAIN LAUREL		
	DODONAEA VISCOSA	5 GAL 59	
	HOPSEED BUSH		

GROUNDCOVERS | VINES

	LANTANA MONTEVIDENSIS	SIZE/QTY	5 GAL 43
	PURPLE TRAILING LANTANA		
	LANTANA CAMARA 'NEW GOLD'	5 GAL 37	
	NEW GOLD LANTANA		
	BOUGAINVILLEA xBARBARA KARST	5 GAL 08	
	BARBARA KARST BOUGAINVILLEA		

CACTI | SUCCULENTS

	AGAVE WEBERI	SIZE/QTY	15 GAL 18
	WEBER'S AGAVE		
	DASYLIRION WHEELERI	5 GAL 07	
	DESERT SPOON		
	LOPHOCEREUS SCHOTTII VAR. MONSTROSUS	15 GAL 09	
	TOTEM POLE CACTUS		
	HESPERALOE PARVIFLORA	5 GAL 03	
	RED YUCCA		
	EUPHORBIA LOMELII	5 GAL 31	
	LADY SLIPPER		
	HESPERALOE FUNIFERA	5 GAL 09	
	GIANT HESPERALOE		
	ALOE MACULATA	1 GAL 26	
	ZEBRA ALOE		
	MUHLENBERGIA RIGENS	5 GAL 61	
	DEER GRASS		

SURFACE MATERIALS

	1/2" SCREENED GRANITE	SIZE/QTY	4" MIN. DEPTH
	COLOR: TABLE MESA BROWN		
	ARTIFICIAL TURF (REFER TO DETAIL 01-02/L8)	1,900 S.F.	
	TYPE: TIGER COOL DIAMOND PRO FESCUE TURF		
	CONCRETE PAVER (REFER TO DETAIL 14/L10)	2,100 S.F.	
	STYLE: CALARC PAVER (BY PAVESTONE.COM)		
	SIZE: 12"x12"x2" COLOR: CAPE BROWN 1407		
	CONCRETE PAVER (REFER TO DETAIL 14/L10)	2,200 S.F.	
	STYLE: CALARC PAVER (BY PAVESTONE.COM)		
	SIZE: 12"x12"x2" COLOR: ALMOND 1406		
	LARGE SCALE NARROW MODULAR PAVERS	2,800 S.F.	
	(BY WWW.STEPSTONEINC.COM) (DETAIL 14/L10)		
	SIZE: 6"x36"x2-1/2" RUNNING BOND PATTERN		
	COLORS: 50% ESPRESSO BROWN 1408, 50% CAPE BROWN 1407		
	DAVIS INTEGRAL COLOR CONCRETE (DETAIL 15/L10)	8,500 S.F.	
	PIGMENT: SAN DIEGO BUFF 5237		
	NOTE: 4" x 4" PADS @ EXTENDED PATIOS TO BE		
	PIGMENT COLOR - COCCA 6130		
	COMPACTED 1/4" MINUS DECOMPOSED GRANITE	1,000 S.F.	
	(4" MIN. DEPTH), COLOR: SANTA FE GOLD		
	UNIT PAVERS (REFER TO DETAIL 16/L10)	380 S.F.	
	STYLE: HOLLAND STONE COLOR: FUEGO BLEND		
	SIZE: 4"x8"x3-1/8" (BY WWW.BELGARD.COM)		
	NOTE: TO BE INSTALLED IN HERRINGBONE PATTERN		
	CONCRETE OVERPOUR - VEHICULAR (REFER TO CIVIL DWGS)		

Revision
 STIPULATION SET
 RETAIN FOR RECORDS
 APPROVED
 6-14-19
 DATE INITIALS
 51-DR-14

Designed by: S.J.O.
 Drawn by: D.R.E.
 Architect of Record: D.R.E.
 Date Plotted: 05.25.19
 Issue for Pricing/Building:
 Issue for Permit Application:
 Issue for Construction:

#	DATE	COMMENTS
1	5.25.19	REVISION 01
2	6.14.19	REVISION 02
3		REVISION 03

© 2019 by Humphreys & Partners Architects, L.P. All Rights Reserved.
 The architectural work described herein is the sole property of Humphreys & Partners Architects, L.P. and may not be reproduced or used without its express written permission. No permission is granted to reproduce any of the architectural work, including without limitation the construction of any building, or to use any of the architectural work in any way, in whole or in part, without the express written permission of Humphreys & Partners Architects, L.P. and in the absence of any written agreement to the contrary, is limited to a one-time use on the site indicated on these plans.

INSPIRE ON EARLL
 7300 E. Earll Dr.
 Scottsdale, AZ 85251
 CLIENT: Deco Communities



HUMPHREYS & PARTNERS
 ARCHITECTS, L.P.
 1328 ALPHEA ROAD, SUITE 300
 DALLAS, TEXAS 75246
 (214) 388-5100 (972) 761-8088 FAX
 DALLAS CHARLOTTE IRVINE LAS VEGAS
 NEW ORLEANS HOUSTON OKLAHOMA PHOENIX
 www.humphreys.com



humphreys and partners
 landscape architecture, inc.
 3327 alpha rd, suite 300
 dallas, tx 75246
 p 214.388.5100 f 972.761.8088
 www.hplab.com

SHEET CONTENTS
 landscape plan

SHEET NO.
 L3.10