



Archaeological Resources

Airport Vicinity Development Checklist

Parking Study

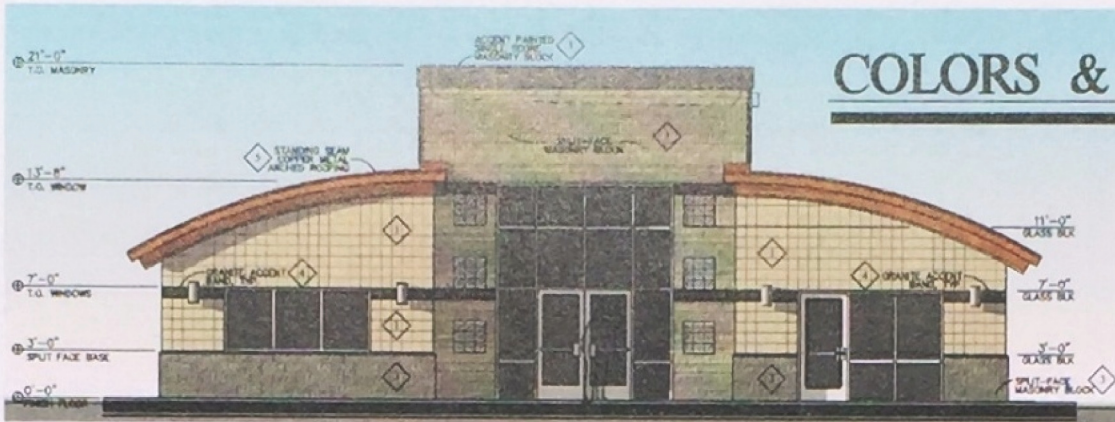
Trip Generation Comparison

Parking Master Plan

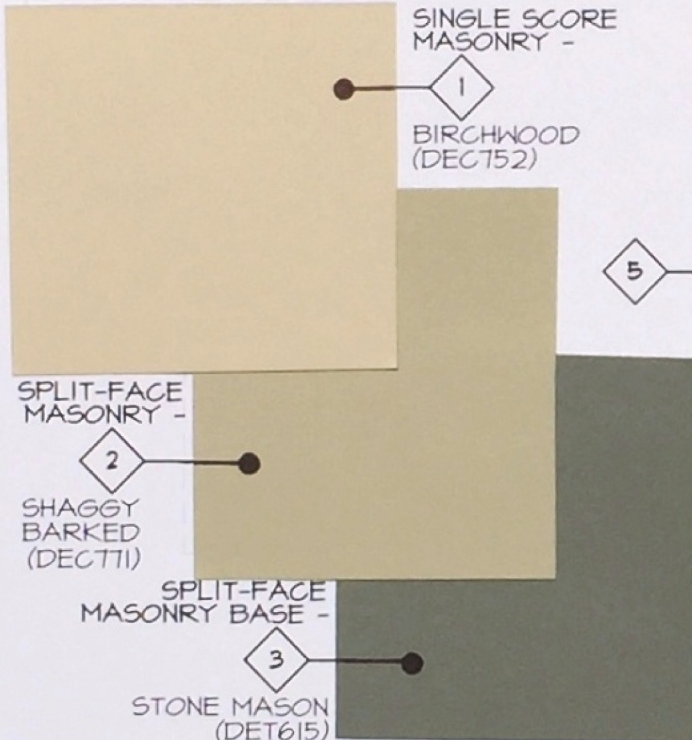
COLORS & MATERIALS

DRB: 174-PA-2019

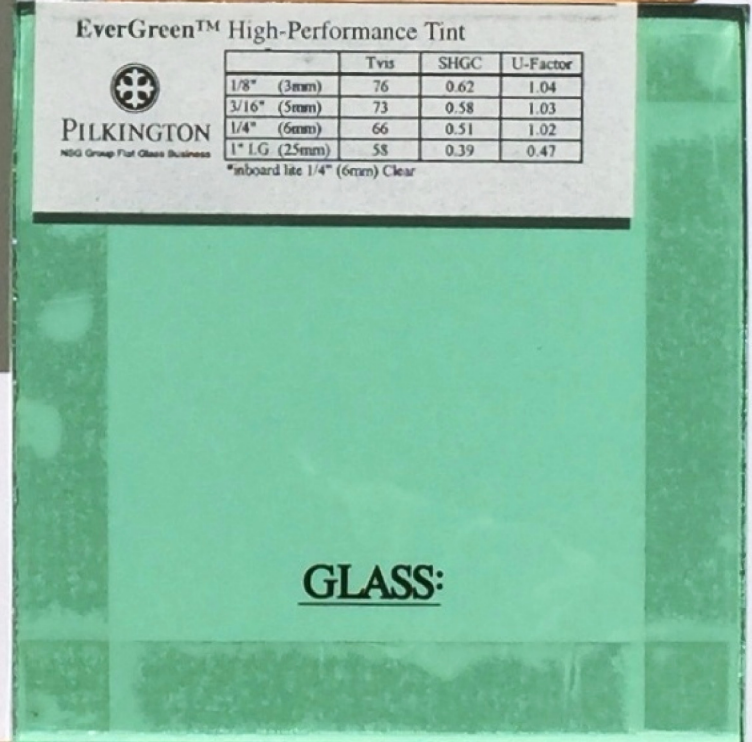
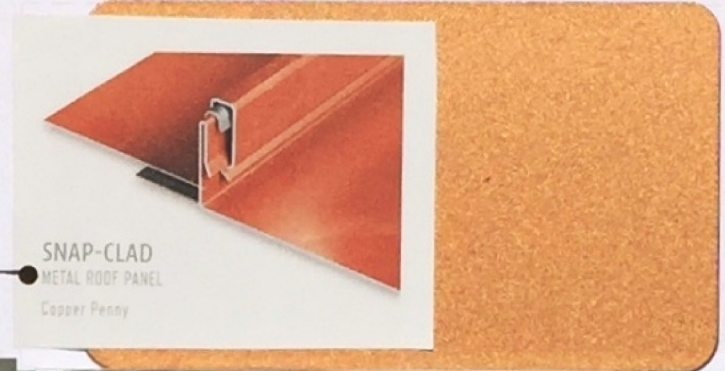
MAY 30, 2019



PAINT COLORS: *ALL COLORS BY: DUNN-EDWARDS CO



ROOFING: STANDING SEAM METAL PRE-FINISHED COPPER



GLASS:

GRANITE: GALACTIC BLACK



WINDOW FRAME:

NATURAL ALUMINUM

SINGLE-SCORE HUNTINGTON GRAY

CMU BLOCK:

SPLIT-FACE HUNTINGTON GRAY

PROFESSIONAL OFFICES

FOR: SIMONSON BUILDING, INC.

SCOTTSDALE, ARIZONA



architects & planners international, inc.

4717 E. McDowell suite 100 phoenix, arizona 85006 (602) 273-4202



COLOR SUBMITTAL

THE #1 CHOICE OF
PAINTING PROFESSIONALS®

Job Name: **Prof. Offices DR 174-PA-2019**

Painting Contractor: **0**

General Contractor: **0**

Architect/Designer: **Architects and Planners Int'l. Inc**

Date:

May 24, 2019

Product:

EVSH20

Color:

DEC752 Birchwood

Area / Sheen:

Velvet

D.E. Contact:

Tim Garver 602.714.7280

This submittal is intended for color and sheen approval and may not have been produced from the actual product specified. Dunn-Edwards recommends following the procedures outlined in PDCA Std. P5.09 Sample Procedure.



COLOR SUBMITTAL

THE #1 CHOICE OF
PAINTING PROFESSIONALS®

Job Name: **Prof. Offices DR 174-PA-2019**

Painting Contractor: **0**

General Contractor: **0**

Architect/Designer: **Architects and Planners Int'l. Inc**

Date:

May 24, 2019

Product:

EVSH20

Color:

DECC771 Shaggy Barked

Area / Sheen:

Velvet

D.E. Contact:

Tim Garver

602.714.7280

This submittal is intended for color and sheen approval and may not have been produced from the actual product specified. Dunn-Edwards recommends following the procedures outlined in DDCA 014-05-00-0.



COLOR SUBMITTAL

**THE #1 CHOICE OF
PAINTING PROFESSIONALS®**

Job Name: **Prof. Offices DR 174-PA-2019**

Painting Contractor: **0**

General Contractor: **0**

Architect/Designer: **Architects and Planners Int'l. Inc**

Date: **May 24, 2019**

Product: **EVSH20**

Color: **DET615 Stone Mason**

Area / Sheen: **Velvet**

D.E. Contact: **Tim Garver 602.714.7280**

This submittal is intended for color and sheen approval and may not have been produced from the actual product specified. Dunn-Edwards recommends following the procedures outlined in PDCA Std. P5.00 Sample Procedure.