



Full Size or Largest Size Plans

Site Plan

Landscape Plan

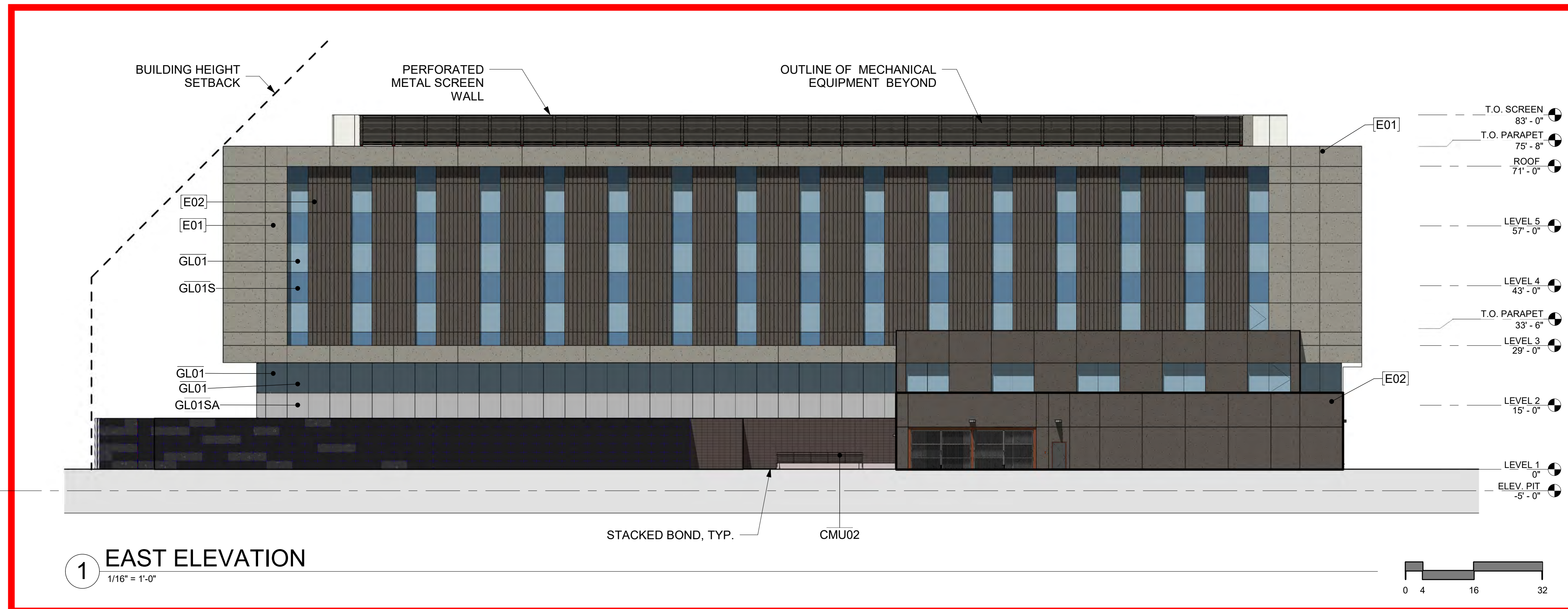
Elevations

STIPULATION SET
RETAIN FOR RECORDS
APPROVED

12/20/2019

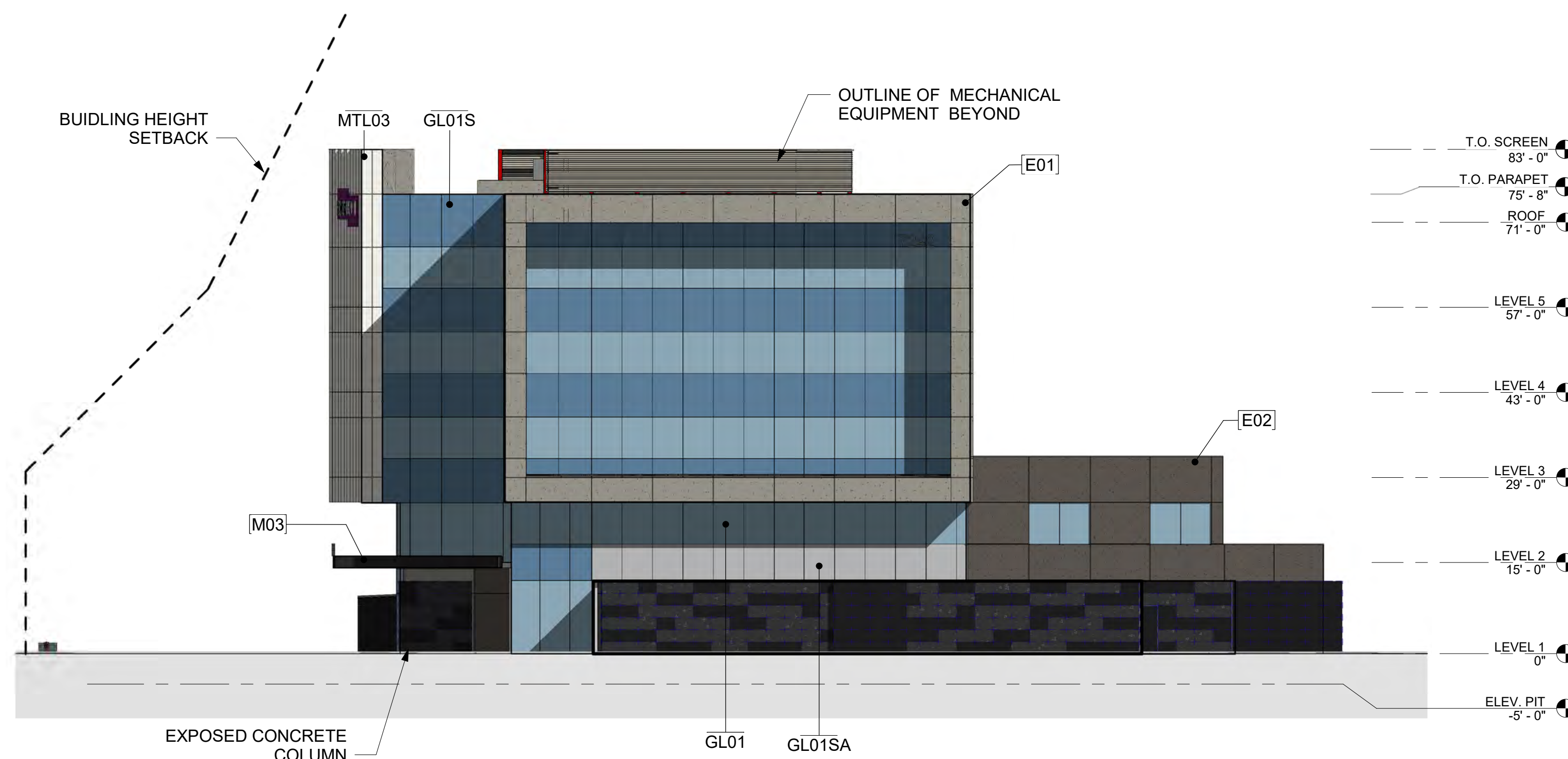
DATE

APPROVED BY



1 EAST ELEVATION

1/16" = 1'-0"



2 SOUTH ELEVATION

1/16" = 1'-0"

PATTERN LEGEND

	E01	PRODUCT: EIFS MFR: DryVit FINISH: 616 King's Grey
	E02	PRODUCT: EIFS MFR: DryVit FINISH: SW 7505 Manor House
	M01	PRODUCT: Metal Panel MFR: 0 FINISH: Match SW7018 Dovetail
	M02	PRODUCT: Paint MFR: Sherwin Williams FINISH: SW7505 Manor House
	M03	PRODUCT: #REF! MFR: #REF! FINISH: #REF!
	PT01	PRODUCT: Painted Steel MFR: Sherwin Williams FINISH: SW 7009 Pearly White
	GL01	PRODUCT: Glass MFR: Viracon FINISH: VUE1-40, 1" Insulating HS/HS
	GL01S	PRODUCT: Spandral Glass MFR: Viracon FINISH: 1/4" Pacifica-27, with V948 Medium Grey frit on #2 surface
	GL01SA	PRODUCT: Spandral Glass MFR: Viracon FINISH: VUE1-40 1" Insulating HS/HS, with V948 Medium Grey frit on #4 surface
	GL02	PRODUCT: Glass MFR: Viracon FINISH: VRE4-54, 1" Insulating HS/HS
	GL02S	PRODUCT: Spandral Glass MFR: Viracon FINISH: 1/4" bronze Monolithic HS, with V903 Subdued Gray frit on #2 surface
	AL01	PRODUCT: Mullion MFR: Arcadia FINISH: Arcadia #11 / Clear AC-2
	AL02	PRODUCT: #REF! MFR: #REF! FINISH: #REF!
	CM01	PRODUCT: CMU MFR: Trenwyth - Trendstone FINISH: Smooth face block

Devenney
GROUP

Devenney Group Ltd., Architects
201 W. Indian School Road
Phoenix, Arizona 85013
T: 602.943.8950
F: 602.943.7645
www.devenneygroup.com

Consultant:

IF THESE PLANS DO NOT BEAR THE SEAL OF A REGISTRANT, THEY ARE TO BE CONSIDERED "PRELIMINARY" AND ARE NOT TO BE USED FOR CONSTRUCTION OR RECORDING. THESE PLANS ARE COPYRIGHTED AND ARE SUBJECT TO COPYRIGHT PROTECTION AS AN "ARCHITECTURAL WORK" UNDER SEC. 102 OF THE COPYRIGHT ACT, 17 U.S.C. AS AMENDED DECEMBER 1990 AND KNOWN AS ARCHITECTURAL WORKS COPYRIGHT PROTECTION ACT OF 1990. THE PROTECTION INCLUDES BUT IS NOT LIMITED TO THE OVERALL FORM AS WELL AS THE ARRANGEMENT AND COMPOSITION OF SPACES AND ELEMENTS OF THE DESIGN. UNDER SUCH PROTECTION, UNAUTHORIZED USE OF THESE PLANS CAN LEGALLY RESULT IN THE CESSION OF CONSTRUCTION OR BUILDINGS BEING SEIZED AND/OR MONETARY COMPENSATION TO DEVENNEY GROUP LTD.

NEUROSCIENCE
INSTITUTE

HONORHEALTH

7242 E OSBORN RD
SCOTTSDALE, AZ 85251

AUTHORITY HAVING JURISDICTION:
CITY OF SCOTTSDALE

CITY OF SCOTTSDALE PLAN CHECK CASE NO.:

FACILITY NUMBER:

DRB CASE NO.:

20-DR-2019

PACKAGE:

REVISIONS		
REV #	DESCRIPTION	DATE

DATE: 04/18/2019
SCALE: 1/16" = 1'-0"
DRAWN: Author
REVIEWED: Checker
JOB NUMBER: 63545

COLORED EXTERIOR
ELEVATIONS

DRB_37B

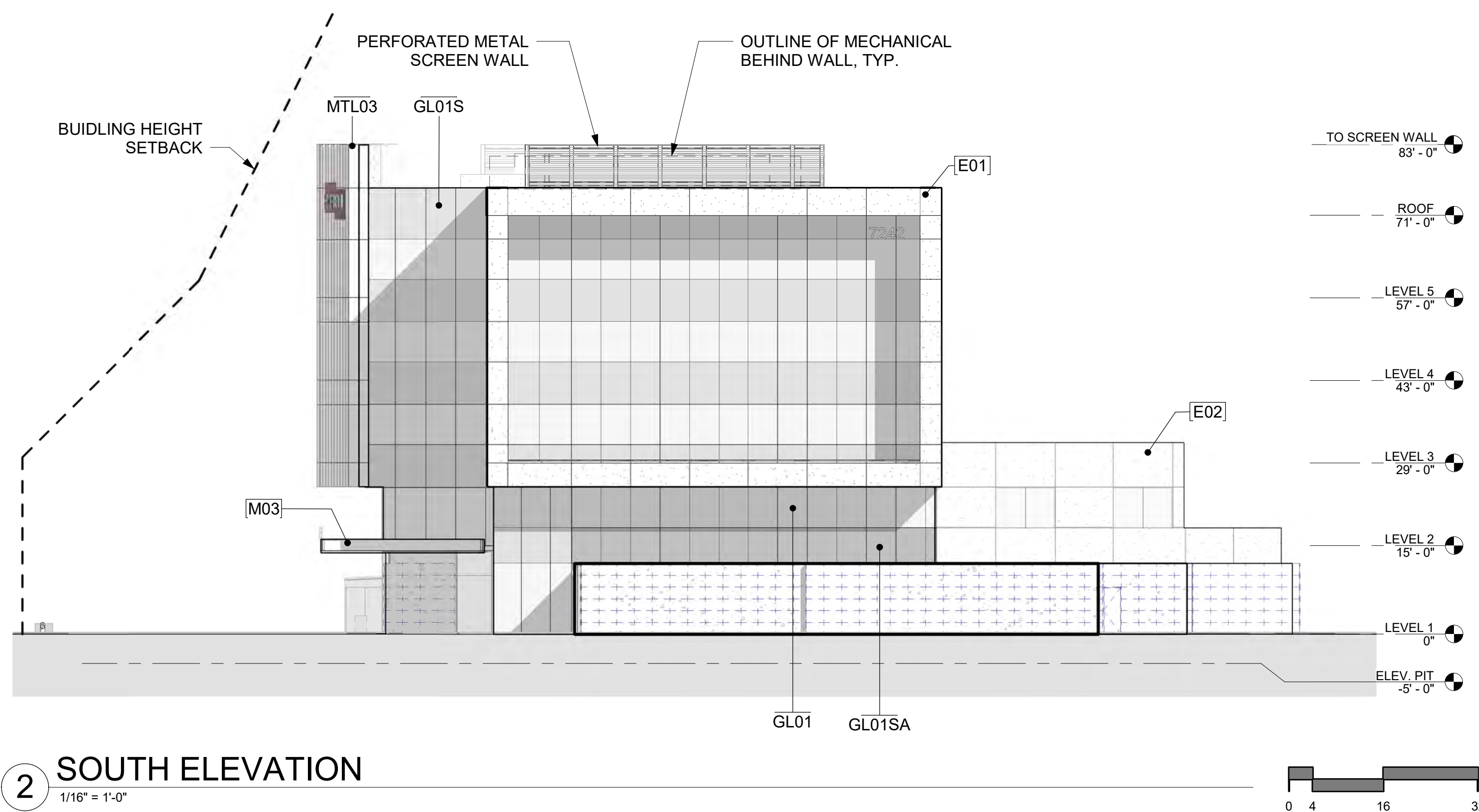
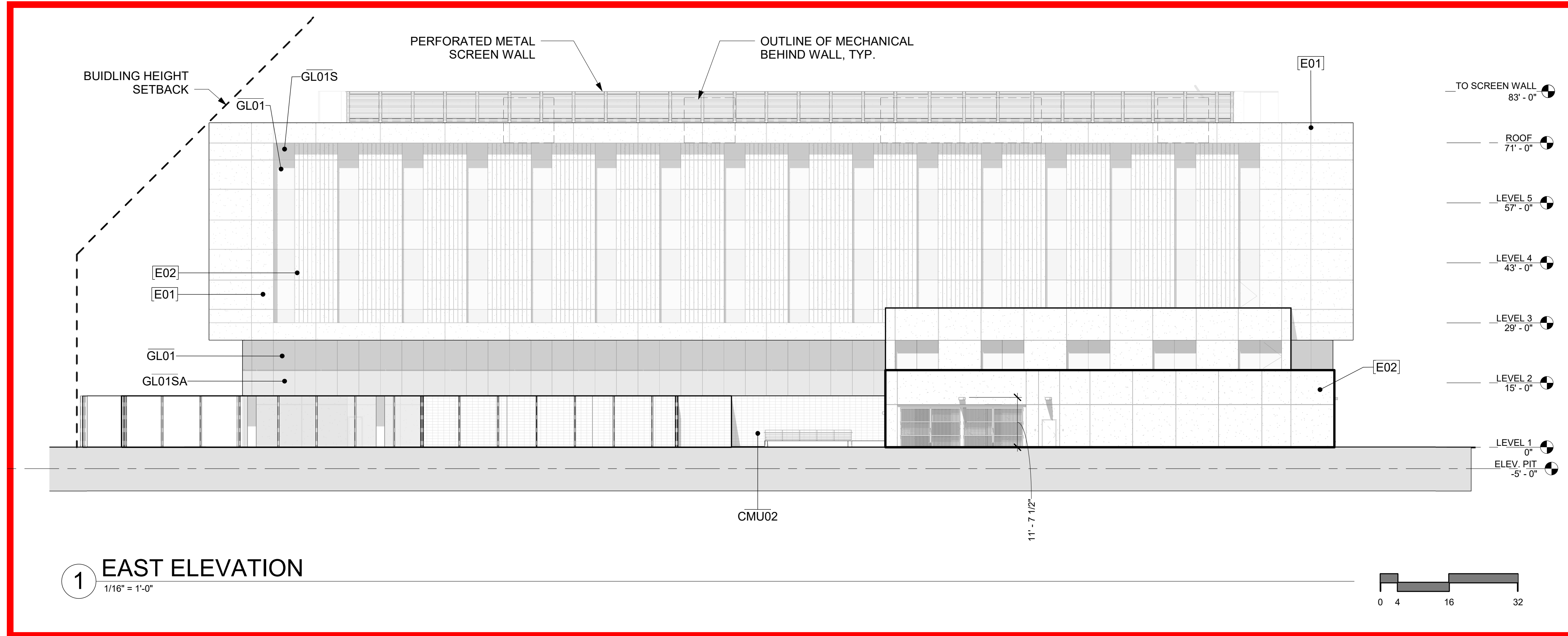
BIM 360/Honor - Osborn Scottsdale MOB - NS/HHQ/NSI+AR+ALL.rvt 12/20/2019 4:03:36 PM Notice of Alternate Billing or Payment Cycle: The Owner may plan to make payments on an alternative schedule. A written description of such billing or payment cycle applicable to the Project is available from the Owner or the Owner's designated agent upon request.

STIPULATION SET
RETAIN FOR RECORDS
APPROVED

12/20/2019

DATE

APPROVED BY



MATERIAL LEGEND	
E01	EIFS
PRODUCT:	EIFS
MFR:	DryVit
FINISH:	616 King's Grey
E02	EIFS
PRODUCT:	EIFS
MFR:	DryVit
FINISH:	SW 7505 Manor House
E03	EIFS
PRODUCT:	EIFS
MFR:	DryVit
FINISH:	SW 7009 Pearly White
MTL01	Metal Panel
PRODUCT:	Metal Panel
MFR:	Match SW7018 Dovetail
FINISH:	Match SW7018 Dovetail
MTL03	Metal Panel
PRODUCT:	Metal Panel
MFR:	Reynobond
FINISH:	Frisco White
MTL04	Metal Panel
PRODUCT:	Metal Panel
MFR:	Reynobond
FINISH:	Classic Bronze
EPT01	Paint
PRODUCT:	Paint
MFR:	Sherwin Williams
FINISH:	SW 7018 Dovetail
EPT02	Paint
PRODUCT:	Paint
MFR:	Sherwin Williams
FINISH:	SW7505 Manor House
EPT03	Painted Steel
PRODUCT:	Painted Steel
MFR:	Sherwin Williams
FINISH:	SW 7009 Pearly White
EPT04	Painted Steel
PRODUCT:	Painted Steel
MFR:	Sherwin Williams
FINISH:	SW 7069 Iron Ore
GL01	Glass
PRODUCT:	Glass
MFR:	Viracon
FINISH:	VUE1-40, 1" Insulating HS/HS
GL01S	Spandrel Glass
PRODUCT:	Spandrel Glass
MFR:	Viracon
FINISH:	1/4" Pacifica-27, with V948 Medium Grey frit on #2 surface
GL01SA	Spandrel Glass
PRODUCT:	Spandrel Glass
MFR:	Viracon
FINISH:	VUE1-40 1" Insulating HS/HS, with V948 Medium Grey frit on #4 surface
GL02	Glass
PRODUCT:	Glass
MFR:	Viracon
FINISH:	VRE4-54, 1" Insulating HS/HS
GL02S	Spandrel Glass
PRODUCT:	Spandrel Glass
MFR:	Viracon
FINISH:	1/4" bronze Monolithic HS, with V903 Subdued Gray frit on #2 surface
AL01	Mullion
PRODUCT:	Mullion
MFR:	Arcadia
FINISH:	Arcadia #11 / Clear AC-2
CMU02	CMU
PRODUCT:	CMU
MFR:	Trenwyth - Trendstone
FINISH:	Smooth face block
COLOR:	Opal
PATTERN:	Stacked Running Bond
SIZE:	8"x8"x16"



Devenney Group Ltd., Architects
201 W. Indian School Road
Phoenix, Arizona 85013
T: 602.943.8950
F: 602.943.7645
www.devenneygroup.com

Consultant:

IF THESE PLANS DO NOT BEAR THE SEAL OF A REGISTRANT, THEY ARE TO BE CONSIDERED "PRELIMINARY" AND ARE NOT TO BE USED FOR CONSTRUCTION OR RECORDING. THESE PLANS ARE COPYRIGHTED AND ARE SUBJECT TO COPYRIGHT PROTECTION AS AN "ARCHITECTURAL WORK" UNDER SEC. 102 OF THE COPYRIGHT ACT, 17 U.S.C. AS AMENDED DECEMBER 1990 AND KNOWN AS ARCHITECTURAL WORKS COPYRIGHT PROTECTION ACT OF 1990. THE PROTECTION INCLUDES BUT IS NOT LIMITED TO THE OVERALL FORM AS WELL AS THE ARRANGEMENT AND COMPOSITION OF SPACES AND ELEMENTS OF THE DESIGN. UNDER SUCH PROTECTION, UNAUTHORIZED USE OF THESE PLANS CAN LEGALLY RESULT IN THE CESSATION OF CONSTRUCTION OR BUILDING BEING SEIZED AND/OR MONETARY COMPENSATION TO DEVENNEY GROUP LTD.

NEUROSCIENCE INSTITUTE

HONORHEALTH

7242 E OSBORN RD
SCOTTSDALE, AZ 85251

AUTHORITY HAVING JURISDICTION:
CITY OF SCOTTSDALE

CITY OF SCOTTSDALE PLAN CHECK CASE NO.:

FACILITY NUMBER:

DRB CASE NO.:
20-DR-2019
PACKAGE:

REVISIONS		
REV #	DESCRIPTION	DATE

DATE: 04/18/2019
SCALE: 1/16" = 1'-0"
DRAWN: Author
REVIEWED: Checker
JOB NUMBER: 63545

EXTERIOR ELEVATIONS

DRB_37D

Notice of Alternate Billing or Payment Cycle: The Owner may plan to make payments on an alternative schedule. A written description of such billing or payment cycle applicable to the Project is available from the Owner or the Owner's designated agent upon request.
BIM 360/Honor - Osborn Scottsdale MOB - NSI/HHC/NSI+AR+ALL.rvt 12/22/2019 4:04:39 PM



NORTHWEST VIEW - FROM EXISTING PARKING GARAGE ACROSS N. BROWN AVE.



SOUTHWEST VIEW - FROM E. OSBORN ROAD



SOUTHEAST VIEW - FROM E. OSBORN ROAD



Devenney Group Ltd., Architects
 201 W. Indian School Road
 Phoenix, Arizona 85013
 T: 602.943.8950
 F: 602.943.7645
 www.devenneygroup.com

Consultant:

IF THESE PLANS DO NOT BEAR THE SEAL OF A REGISTRANT, THEY ARE TO BE CONSIDERED "PRELIMINARY" AND ARE NOT TO BE USED FOR CONSTRUCTION OR RECORDING. THESE PLANS ARE COPYRIGHTED AND ARE SUBJECT TO COPYRIGHT PROTECTION AS AN "ARCHITECTURAL WORK" UNDER SEC. 102 OF THE COPYRIGHT ACT, 17 U.S.C. AS AMENDED DECEMBER 1990 AND KNOWN AS ARCHITECTURAL WORKS COPYRIGHT PROTECTION ACT OF 1990. THE PROTECTION INCLUDES BUT IS NOT LIMITED TO THE OVERALL FORM AS WELL AS THE ARRANGEMENT AND COMPOSITION OF SPACES AND ELEMENTS OF THE DESIGN. UNDER SUCH PROTECTION UNAUTHORIZED USE OF THESE PLANS CAN LEGALLY RESULT IN THE CESSATION OF CONSTRUCTION OR BUILDINGS BEING SEIZED AND/OR MONETARY COMPENSATION TO DEVENNEY GROUP LTD.

**NEUROSCIENCE
 INSTITUTE**

HONORHEALTH

 7242 E OSBORN RD
 SCOTTSDALE, AZ 85251

AUTHORITY HAVING JURISDICTION:
CITY OF SCOTTSDALE

CITY OF SCOTTSDALE PLAN CHECK CASE NO.:

FACILITY NUMBER:

DRB CASE NO.:

20-DR-2019

PACKAGE:

REVISIONS		
REV #	DESCRIPTION	DATE

DATE: 08/19/2019
 SCALE:
 DRAWN: Author
 REVIEWED: Checker
 JOB NUMBER: 63545

RENDERINGS

DRB_39

BIM 360/Honor - Osborn Scottsdale MOB - NS/HON/NSI-AR-ALL.rvt
 Notice of Alternate Billing or Payment Cycle: The Owner may plan to make payments on an alternative schedule. A written description of such billing or payment cycle applicable to the Project is available from the Owner or the Owner's designated agent upon request.
 12/2/2019 4:04:40 PM