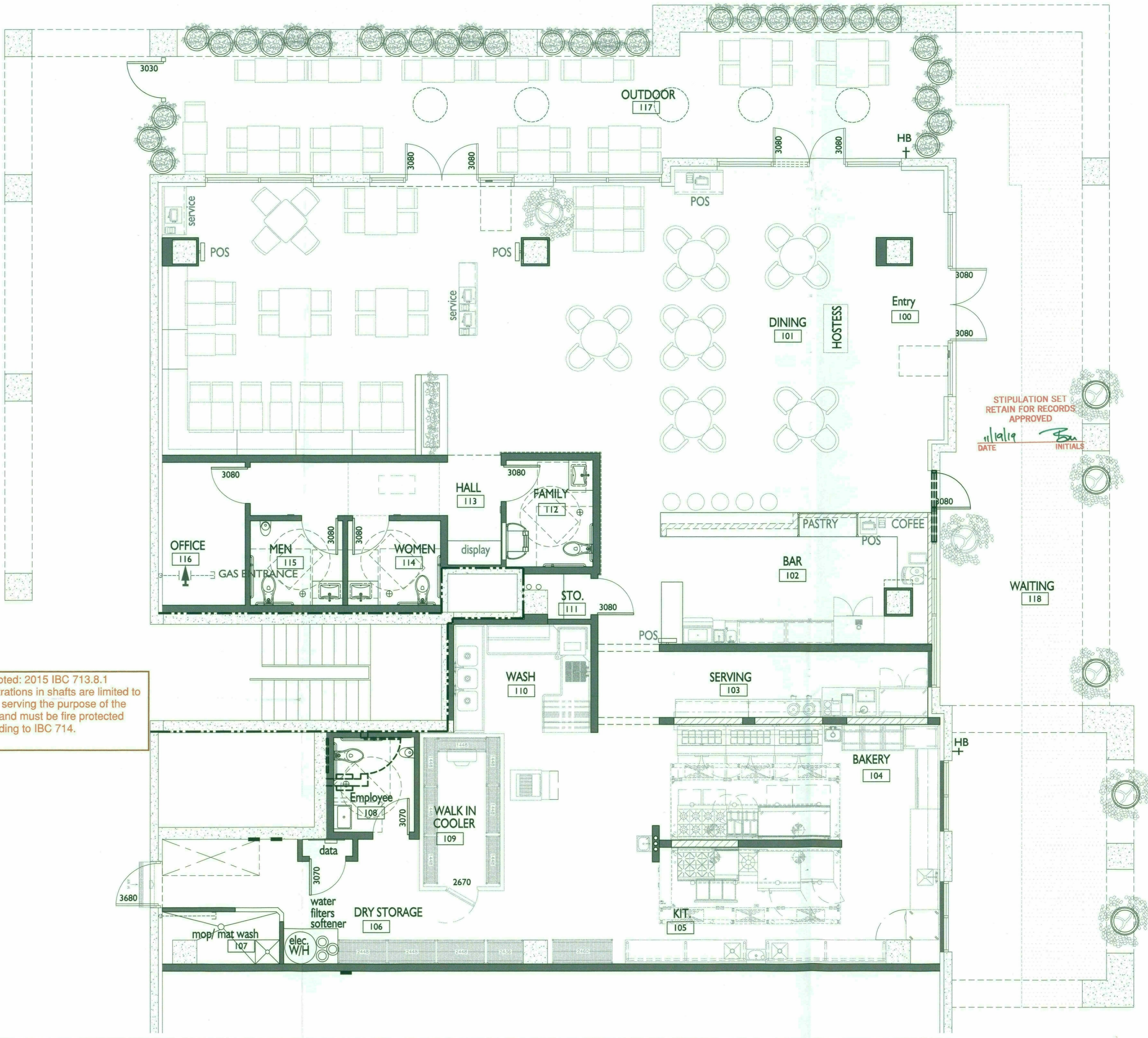


Final Approved Stamped Plans
Full Size

GENERAL NOTES:

- THE WORD 'ARCHITECT' AS USED IN THESE DOCUMENTS REFERS TO THE BUILDING ARCHITECT, EXA ARCHITECTS.
- THE WORD 'ALIGN' AS USED IN THESE DOCUMENTS SUPERCEDES ANY DIMENSIONAL INFORMATION INDICATED. IF DISCREPANCIES OCCUR, NOTIFY ARCHITECT IMMEDIATELY.
- THE WORD 'PROVIDE' AS USED IN THESE DOCUMENTS MEANS FURNISH AND INSTALL.
- THE WORD 'CLEAR' AS USED IN THESE DOCUMENTS SHALL MEAN THAT THE CONDITION IS NOT ADJUSTABLE WITHOUT THE APPROVAL OF THE ARCHITECT. CLEAR DIMENSIONS ARE TYPICALLY TO FINISH FACE OF MAJOR SURFACE. COORDINATE REQUIREMENTS FOR BASE BOARD OR OTHER PROTRUSIONS WITH ARCHITECT.
- THE WORD 'MAXIMUM' AS USED IN THESE DOCUMENTS SHALL MEAN THE CONDITION IS SLIGHTLY ADJUSTABLE BUT MAY NOT VARY TO A DIMENSION OR QUANTITY GREATER THAN THAT SHOWN WITHOUT APPROVAL OF THE ARCHITECT.
- THE WORD 'MINIMUM' AS USED IN THESE DOCUMENTS SHALL MEAN THE CONDITION IS SLIGHTLY ADJUSTABLE BUT MAY NOT VARY TO A DIMENSION OR QUANTITY LESS THAN THAT SHOWN WITHOUT APPROVAL OF THE ARCHITECT.
- THE WORD 'TYPICAL' AS USED IN THESE DOCUMENTS SHALL MEAN THE CONDITION OR DIMENSION IS THE SAME OR REPRESENTATIVE FOR SIMILAR CONDITIONS THROUGHOUT.
- THE SYMBOL '±' AS USED IN THESE DOCUMENTS SHALL MEAN THE DIMENSION OR QUANTITY IS ADJUSTABLE TO ACCOMMODATE ACTUAL CONDITIONS. IF ACTUAL DIMENSION VARIES BY MORE THAN 1" FROM DIMENSION NOTED AS '±', INFORM ARCHITECT BEFORE PROCEEDING.
- G.C. TO VERIFY ALL DIMENSIONS AND CONDITIONS SHOWN ON THE DRAWINGS AT THE JOB SITE AND NOTIFY ARCHITECT OF ANY OMISSIONS, DISCREPANCIES, AND/OR CONFLICTS BEFORE PROCEEDING WITH THE WORK.
- DO NOT SCALE DRAWINGS, DIMENSIONS GOVERN. LARGE SCALE DETAILS GOVERN OVER SMALL SCALE.
- G.C. TO SUBMIT ALL SUBCONTRACTOR SHOP DRAWINGS AND SUBMITTALS TO ARCHITECT FOR APPROVAL BEFORE FABRICATION OR INSTALLATION OF ANY ITEMS. REQUIRED SHOP DRAWING SUBMITTALS INCLUDE, BUT ARE NOT LIMITED TO, MILLWORK, H.V.A.C., PLUMBING, ELECTRICAL, GLASS AND GLAZING, ALL ITEMS ON FINISH LEGEND, DOOR HARDWARE, 2x2 WALL FINISH SAMPLE, PAINTING AND WALL COVERING. DRAWINGS SHALL NOT BE REPRODUCED FOR SUBMITTALS UNLESS PRIOR WRITTEN PERMISSION HAS BEEN OBTAINED FROM THE ARCHITECT AND/OR OWNER. DRAWINGS OR PORTIONS OF DRAWINGS USED FOR SUBMITTALS WILL BE REJECTED AND RETURNED TO THE G.C.
- U.N.O. G.C. TO VERIFY ALL EXISTING SHELL PARTITIONS AND INSTALL INSULATION AND 5/8" GYP. BD. WHERE NEEDED FOR FINISH OUT.
- U.N.O. PARTITIONS ARE DIMENSIONED TO FACE OF FINISH.
- REFER TO DOOR SCHEDULE FOR TYPES AND HARDWARE INFORMATION.
- U.N.O. EDGE OF DOOR TO BE LOCATED 5" OFF PERPENDICULAR PTN. PROVIDE BACK TO BACK OR NESTED 20-GAUGE STUDS AT BOTH SIDES OF ALL NEW JAMB LOCATIONS.
- ALL BLOCKING TO COMPLY WITH APPLICABLE BUILDING AND FIRE CODE REQUIREMENTS. PROVIDE BLOCKING IN PARTITIONS AS REQUIRED TO SECURE CABINETS, MARKER BOARDS, ETC. TO PARTITIONS.
- ALL MATERIALS AND COMPONENTS OF FIRE-RATED ASSEMBLIES SHALL BE APPROVED BY U.L. OR OTHER RECOGNIZED STANDARD FOR USE IN SUCH ASSEMBLIES.
- PATCH ALL WALLS, PARTITIONS, COLUMNS, CONCRETE FLOORS, ETC. AS REQUIRED TO RECEIVE NEW FINISH.
- G.C. TO COORDINATE AND INSTALL ALL APPLIANCES AS SHOWN IN DOCUMENTS. COORDINATE LOCATION, SIZE AND ALL REQUIRED PLUMBING AND ELECTRICAL CONNECTIONS.
- U.N.O. INSTALL CEMENT BACKER BOARD AT ALL WET WALLS, INCLUDING BUT NOT LIMITED TO RESTROOM AND SINK LOCATIONS.
- REFER TO ENGINEERING DOCUMENTS FOR ADDITIONAL INFORMATION.
- INTERIOR WALLS ARE TO WOOD OR METAL STUDS WITH GYPSUM BOARD. FOR WALL FINISH SEE INTERIOR FINISH SCHEDULE. (DIMENSIONS ON PLANS ARE NOMINAL.)
- LAYOUT AS DIMENSIONED ONLY. DO NOT SCALE DRAWINGS.
- THE WORD 'TENANT' AND 'OWNER' AS USED IN THESE DOCUMENTS REFERS TO THE OWNER.
- SEE ACCESSIBILITY DETAILS SHEETS FOR ALL HANDICAPPED STANDARDS.
- CONTRACTOR SHALL SCHEDULE AND COORDINATE WORK, VERIFY DELIVERY DATES FOR ANY LONG LEAD ITEMS & MATERIALS TO ENSURE THEIR INSTALLATION IN THEIR PROPER SEQUENCE OF THE JOB.
- ALL PERMIT COSTS TO BE PAID BY CONTRACTOR.
- ALL SPECIAL INSPECTIONS AND ANY TESTING COSTS TO BE PAID BY CONTRACTOR.
- CONTRACTOR SHALL VISIT THE SITE AND VERIFY ALL CONDITIONS AND BRING TO THE ARCHITECTS ATTENTION PRIOR TO CONSTRUCTION, ANY DISCREPANCIES FROM THE DRAWINGS.
- ALL CONSTRUCTION SHALL CONFORM TO THE APPROPRIATE CITY, COUNTY AND STATE CODES CONFORM TO THE INDUSTRIAL COMMISSION OF THE ARIZONA GENERAL CONSTRUCTION SAFETY CODE AND OSHA REQUIREMENTS. REQUIRE ALL SUBCONTRACTORS TO COMPLY WITH THESE REQUIREMENTS.
- PROVIDE 48 HOURS NOTICE TO THE BUILDING OWNER OF ANY WORK WHICH MAY DISTURB ADJACENT AREAS, DISRUPT UTILITY SERVICE OR REQUIRE WORK OUTSIDE THE IMMEDIATE AREA UNDER CONSTRUCTION OR WEEKEND WORK.
- PROVIDE TWO YEAR GUARANTEE FOR MATERIALS AND WORKMANSHIP.
- ALL DIMENSIONS ARE TO BE VERIFIED IN THE FIELD. ANY DISCREPANCIES ARE TO BE BROUGHT TO THE ARCHITECTS ATTENTION. DO NOT SCALE THE PLANS.
- ALL DIMENSIONS FOR INTERIOR WALLS USUALLY ARE TO CENTER LINE OF WALL UNLESS OTHERWISE NOTED.
- DETAILS ARE USUALLY KEYED ONCE ON THE PLANS OR ELEVATIONS AND ARE TYPICAL FOR SIMILAR CONDITIONS THROUGHOUT UNLESS OTHERWISE NOTED.
- CONTRACTOR SHALL CLEAN UP AREAS AFFECTED BY DAILY WORK AS WELL AS REMOVE OF DEBRIS AND MATERIALS COMPLETELY FROM SITE UPON COMPLETION OF WORK.
- CONTRACTOR SHALL MAINTAIN A CLEAN AND ORDERLY WORK AREA AT ALL TIMES.
- ALL DRYWALL SURFACES TO RECEIVE TAPE, TEXTURE AND PAINT.
- DO NOT USE PAINTS, PRIMERS, SEALERS OR GLUES THAT EMIT FLAMMABLE, TOXIC OR NOXIOUS FUMES. EACH TRADE SHALL BE RESPONSIBLE TO VERIFY THE MATERIALS TO BE USED AND COMPLY WITH THE MANUFACTURER'S WRITTEN INSTRUCTION FOR THEIR USE.
- FRAMING CONTRACTOR SHALL COORDINATE WITH OTHER CONTRACTORS FOR BRACKING AND/OR BLOCKING REQUIRED FOR MOUNTING MILLWORK, SPECIAL EQUIPMENT AND OTHER ITEMS.
- CONTRACTOR SHALL PATCH AND REPAIR EXISTING CONSTRUCTION DAMAGED BY THIS WORK AND AS REQUIRED TO MATCH EXISTING UNDAMAGED FINISHES.
- CONTRACTOR SHALL INCLUDE KEYING OF LOCKS ON NEW DOORS AND PROVIDE TWO SETS OF KEYS PER NEW LOCK. VERIFY ALL REQUIREMENTS WITH OWNER.
- WALL TILE SUBSTRATE MUST BE TAPED AND HOLES & OTHER IMPERFECTIONS MUST BE FILLED.
- GENERAL CONTRACTOR TO PROVIDE SHOP DRAWINGS FOR REVIEW AND APPROVAL.
- GENERAL CONTRACTOR TO PROVIDE A COPY OF THE PERMITTED DOCUMENTS SET TO ARCHITECT.
- PROVIDE A SOILS REPORT BY AN ARIZONA LICENSED GEOTECHNICAL ENGINEER FOR THE FILL PLACEMENT UNDER SLAB IF REQUIRED.
- DESIGN LOAD: REFER TO GENERAL STRUCTURAL NOTES.
- CARE SHOULD BE TAKEN TO PROTECT AND PRESERVE ANY EXISTING TREES AND SHRUBS THAT ARE ON SITE BY NOT IN BUILDING AREA DURING SITE GRADING AND THROUGHOUT THE CONSTRUCTION PROCESS.

AS NOTED: 2015 IBC 713.8.1
Penetrations in shafts are limited to those serving the purpose of the shaft and must be fire protected according to IBC 714.



STIPULATION SET
RETAIN FOR RECORDS
APPROVED
DATE: 11/19/19
INITIALS: [Signature]

NOTE: THESE DOCUMENTS ESTABLISH THE GENERAL STANDARDS OF QUALITY AND DETAIL FOR DEVELOPING A NEGOTIATED CONSTRUCTION CONTRACT.

WALL TYPES:

A. EXISTING EXTERIOR WALL - STUCCO FRAMED WALL TO REMAIN. REFINISH INTERIOR FACE GYP BOARD WITH LEVEL 4 FINISH TYP.	
B. INTERIOR PARTITION - 3/8", 22 GAUGE METAL STUDS AT 24" O.C. W/ 5/8" TYPE 'X' GWB BOTH SIDES. LEVEL 4 FINISH. PAINTED. PROVIDE R-13 BATT INSULATION AT RESTROOM WALLS.	
C. INTERIOR PARTITION - 6", 22 GAUGE METAL STUD AT 24" O.C. W/ 5/8" TYPE 'X' GWB BOTH SIDES. LEVEL 4 FINISH. PAINTED. PROVIDE R-19 BATT INSULATION AT RESTROOM WALLS.	
D. DEMISING WALL 1 HOUR FIRE RATED - 6", 20 GAUGE METAL STUDS AT 16" O.C. W/ 5/8" TYPE 'X' GYP BOARD ON TENANT SIDES ONLY. FIRE TAPED AND READY TO RECEIVED FINISH. PAINTED AND CLAD PER FINISH SCHEDULE. PROVIDE R-19 SOUND ATTENUATION BATT INSULATION AND 6 MILL VINYL SMOKE BARRIER AT BOTH SIDES OF WALL. PROVIDE RC DELUXE RESILIENT CHANNEL (RCS) AT 24" O.C. TYP. OR EQUAL. SEE DETAIL "17 / A6.0"	
E. NEW PLUMBING WALL - 6", 25 GAUGE METAL STUDS AT 24" O.C. W/ 5/8" WATER RESISTANT TYPE 'X' GWB BOTH SIDES. 1/2" CEMENT BOARD BEHIND TILE TYP. U.N.O. LEVEL 4 FINISH. PAINTED. PROVIDE R-19 BATT INSULATION AT RESTROOM WALLS.	
F. NEW PARTIAL WALL - 6", 25 GAUGE METAL STUD AT 24" O.C. W/ 5/8" TYPE 'X' GWB BOTH SIDES. LEVEL 4 FINISH. PAINTED.	
G. NEW PARTIAL WALL - 3 5/8", 25 GAUGE METAL STUD AT 24" O.C. W/ 5/8" TYPE 'X' GWB BOTH SIDES. LEVEL 4 FINISH. PAINTED.	
H. NEW PARTIAL WALL - 2", 25 GAUGE METAL STUD AT 24" O.C. W/ 5/8" TYPE 'X' GWB ONE SIDES. LEVEL 4 FINISH. PAINTED.	

FLOOR PLAN
SCALE: 1/4" = 1'-0"

- WALL TYPE NOTES:**
- USE 5/8" MOISTURE RESISTANT GYPSUM BOARD IN ALL WET AREAS.
 - USE 1/2" CEMENT BOARD UNDER CERAMIC TILE IF OCCURS.
 - SEE ADDITIONAL PARTITION DETAILS ON DETAIL SHEETS AND SEE METAL STUD TABLE.
 - G.C. TO VERIFY ALL DIMENSIONS AND CONDITIONS SHOWN ON THE DRAWINGS @ THE JOB SITE & NOTIFY ARCHITECT OF ANY OMISSIONS, DISCREPANCIES AND / OR CONFLICTS BEFORE PROCEEDING w/ THE WORK.
 - SEE SHEET AS.0 FOR FINISHES SCHEDULE.

LEGEND:

	EXISTING WALL
	METAL STUDS WALL - SEE WALL TYPES.

NOTE:
PRIOR TO ANY CORE DRILLING,
CONTRACTOR MUST VERIFY ALL TENDON
LOCATIONS ON FLOOR AND CEILING TYP.
SEE FIRE DETAILS SHEET A2.2

CITY OF SCOTTSDALE
BUILDING PLANS
THESE PLANS HAVE BEEN APPROVED
AND ARE READY FOR A PERMIT
THIS DOES NOT AUTHORIZE VIOLATIONS OF ANY
CODE OR ORDINANCE



Expires 03.31.22
REVISIONS:
CITY COMMENT
3/29/19

DIMENSION FLOOR PLAN

PREP + PASTRY
7025 E VIA SOLERI DR. UNIT 113 S
SCOTTSDALE, AZ 85251

These drawings are the property of EXA ARCHITECTS, INC. and are prepared by EXA ARCHITECTS, INC. for the purpose of this project and are not to be used for any other project without the express permission of EXA ARCHITECTS, INC. Copyright 2014 All rights reserved.

4544 East Camp Lowell Drive #146
Tucson, Arizona 85712
520.457.5580
www.exaarchitects.com

exa ARCHITECTS

Project: 18102
Date: 03.13.2
Scale: Noted
Sheet:

A2.1