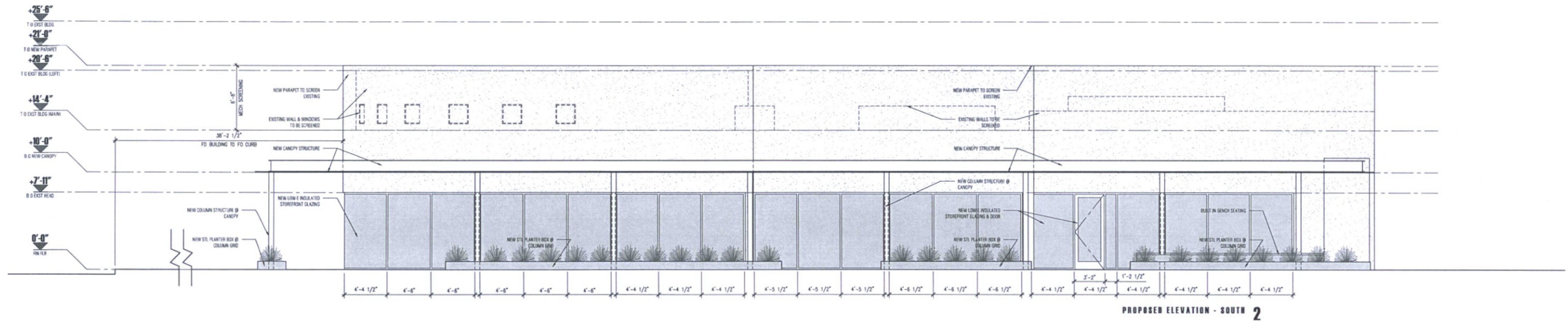
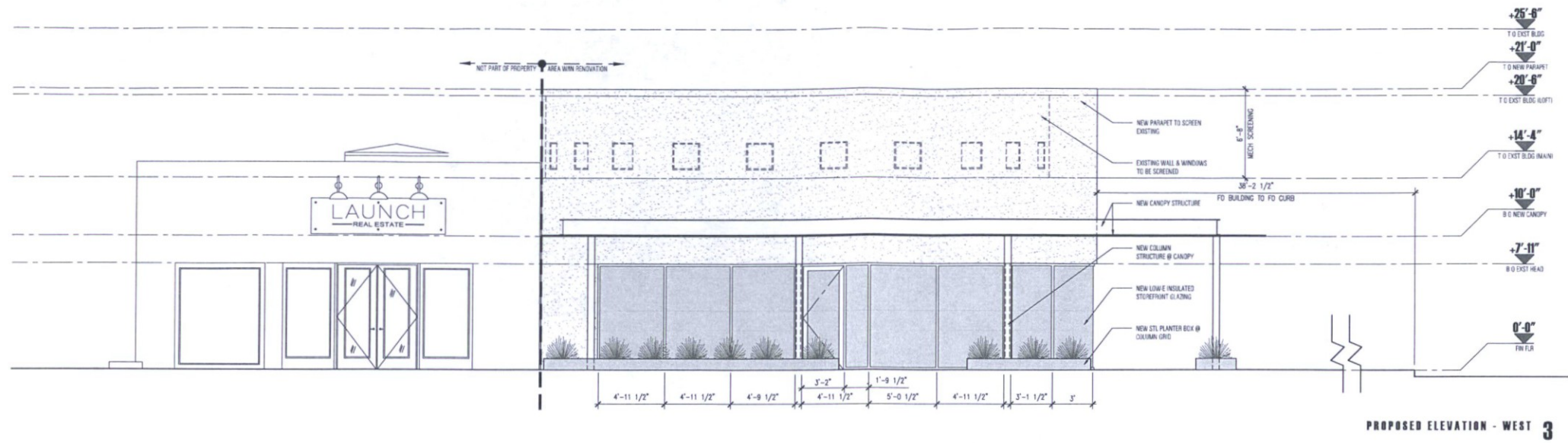


**Final Approved Stamped Plans
Full Size**

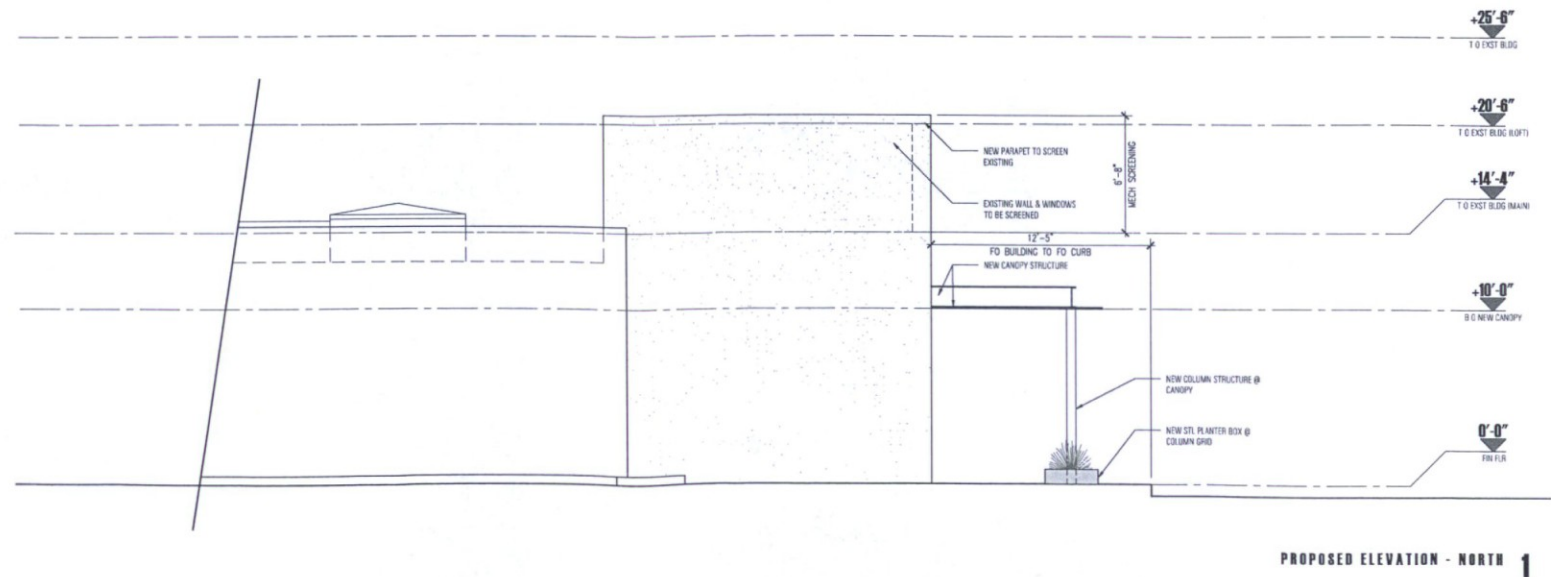
NOT FOR CONSTRUCTION

BENTLEY RENOVATION
4163 north marshall way
scottsdale, arizona 85251

architect:
CHEN + SUCHART STUDIO
7070 east third avenue
scottsdale, arizona 85251
mobile : 480.332.1704 (tommy)
mobile : 480.332.1706 (patricia)
email : thamar@chensuchartstudio.com



Development Review Board
APPROVED
Stipulation Set
08/20/2019 bmoriarit
DATE APPROVED BY



elevations
renovated building
scale : 1/4" = 1'-0"
A5.1
design review board submittal
30 march 2019

project data

PROJECT NAME & ADDRESS

BENTLEY RENOVATION
4163 NORTH MARSHALL WAY
SCOTTSDALE, AZ 85251

SUBMITTED BY (OWNER & APPLICANT):

M3 COMMERCIAL REAL ESTATE DEVELOPMENT, LLC
CONTACT: ERIC W. MARVIN
P.O. BOX 2055
EUGENE, OR 97440
PHN: 503.784.1805
EMAIL: EWAM@M3CRE.COM

APPLICABLE CODES:

2012 INTERNATIONAL FIRE CODE
2012 INTERNATIONAL BUILDING CODE
2012 INTERNATIONAL PLUMBING CODE
2012 INTERNATIONAL MECHANICAL CODE
2012 NATIONAL ELECTRICAL CODE
2012 INTERNATIONAL ENERGY CONSERVATION CODE
2009 ICC A117.1
2010 ADAAG

ZONING:

DRS-1 DO
DOWNTOWN DISTRICT, OFFICE COMMERCIAL, DOWNTOWN
OVERLAY

SITE DATA:

GROSS PARCEL AREA: 5,941 SF
NET LOT AREA: 5,941 SF
GROSS FLOOR AREA: 3,909 SF
OPEN SPACE: NA

SETBACKS:

CITY OF SCOTTSDALE ORDINANCES
TABLE 5.300B.C.

RENOVATION OF EXIST BUILDING - EXST SETBACKS TO REMAIN

LEGAL DESCRIPTION:

APN 173 50 050C

PROJECT DESCRIPTION:

A RENOVATION TO THE EXISTING 3,909 GSF COMMERCIAL BUILDING LOCATED AT 4163 NORTH MARSHALL WAY. THE INTERIOR RENOVATIONS WILL INCLUDE MECHANICAL, ELECTRICAL, AND PLUMBING WORK. THE EXISTING ROOF IS TO REMAIN. EXTERIOR WALLS ARE TO REMAIN WITH THE EXCEPTION OF THE COLONNAGE. THE EXISTING COLONNAGE AND SHADE STRUCTURE IS TO BE REPLACED. EXTERIOR WALLS ARE TO BE EXTENDED VERTICALLY. ADDITIONAL GLASS OPENINGS WILL BE INTEGRATED INTO THE FRONT ELEVATION ALONG WITH THE REPLACEMENT OF THE CURRENT WINDOW SYSTEM WITH NEW ENERGY EFFICIENT GLAZING.

PARKING:

SUITE A:
GROSS AREA: 2,761 SF
REQ PARKING SPACES: (1) SPACE PER 500 SF = (5.5) SPACES OR (6) SPACES

SUITE B:
GROSS AREA: 1,148 SF
REQ PARKING SPACES: (1) SPACE PER 400 SF = (2.9) SPACES OR (3) SPACES

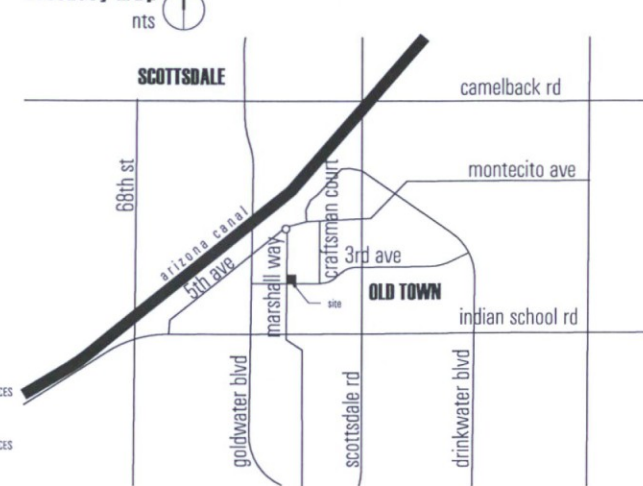
SUITE B PATIO:
GROSS AREA: 350 SF
REQ PARKING: 1 SPACE PER 350 SF AFTER 500 SF = (1) SPACE

RENOVATION - TOTAL REQ PARKING SPACE: (8.4) + (1) SPACES
RENOVATION - TOTAL PROVIDED PARKING SPACES: (10) SPACES

EXISTING PARKING REQ = (8) SPACES ((5) OFF-SITE + (3) ON-SITE)

PROJECT LOCATED IN DO & D DISTRICT. OWNER TO PROVIDE PARKING PER PARKING AGREEMENT FOR (5) SPACES DUE TO THE CREDIT FOR THE EXISTING (5) OFF-SITE SPACES

vicinity map



THESE DRAWINGS ARE NOT TO BE REPRODUCED OR USED FOR ANY OTHER CONSTRUCTION EXCEPT FOR THE NAME ON THESE DRAWINGS. ANY OTHER USE OF THESE PLANS WILL BE WITH THE CONSENT OF THE DESIGNERS. THE DESIGN HEREIN SHALL NOT BE ALTERED BY THE OWNER OR ANY OTHER PARTY WITHOUT WRITTEN AUTHORIZATION FROM THE DESIGNERS. ANY MAJOR CHANGE TO THE PROJECT THAT WILL OCCUR DURING THE CONSTRUCTION PHASE WILL REQUIRE THE WRITTEN APPROVAL OF CHEN + SUCHART STUDIO
© copyright 2019

NOT FOR CONSTRUCTION

BENTLEY RENOVATION

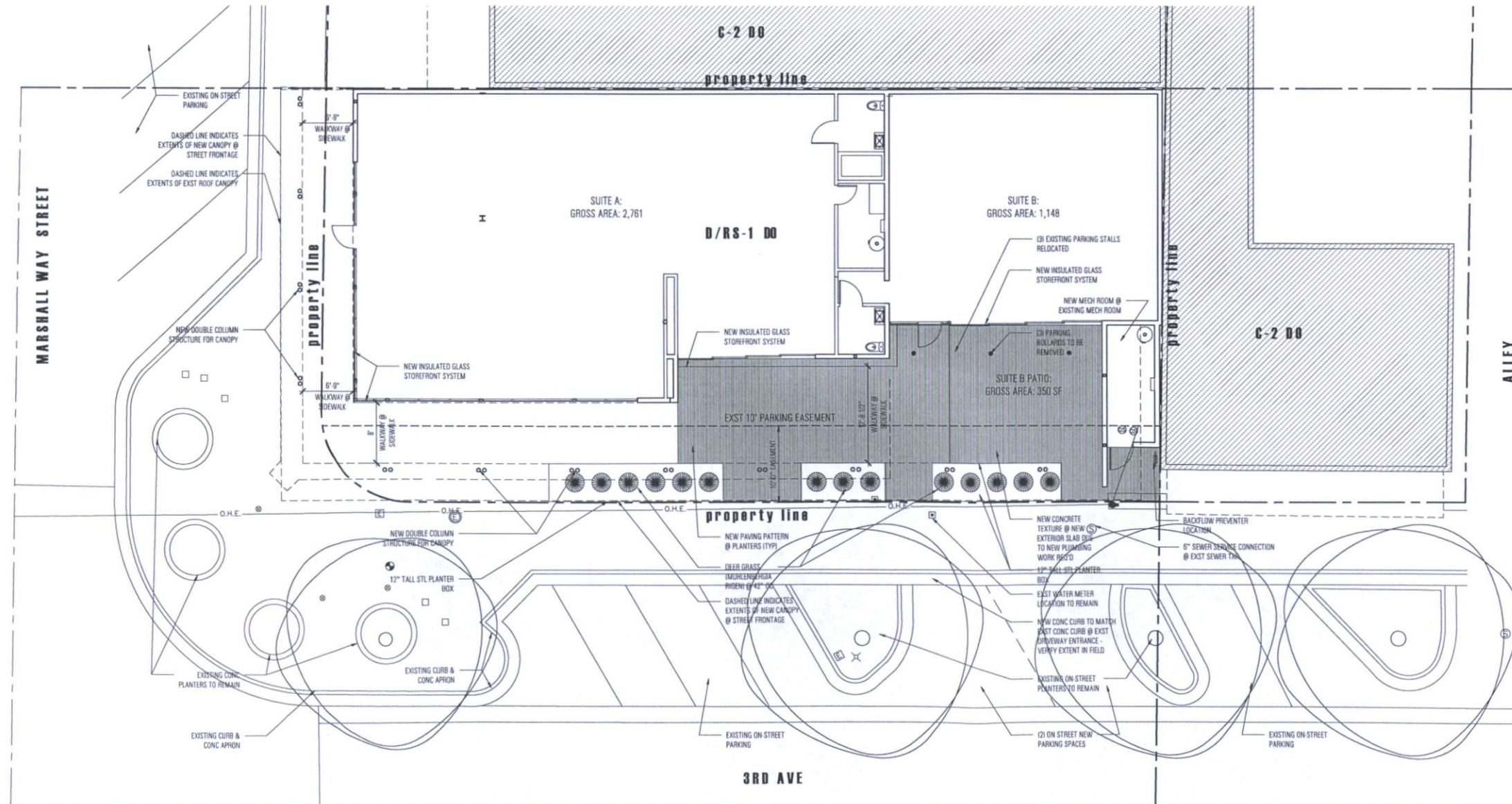
4163 north marshall way
scottsdale, arizona 85251

28 JUNE 2019

architect:

CHEN + SUCHART STUDIO

7070 east third avenue
scottsdale, arizona 85251
mobile : 480.332.1704 (tommy)
mobile : 480.332.1706 (patricia)
email : thamarit@chensuchartstudio.com



site plan
scale : 1/4" = 1'-0"

DRB SITE PLAN
design review board submittal

28 june 2019



0 2' 4' 8' 16' 32' SITE PLAN 1

Development Review Board

APPROVED Stipulation Set

08/20/2019

bmoriarit

DATE

APPROVED BY

LIGHTING PLAN SYMBOL LEGEND	
⚡	SINGLE POLE DIMMER
⚡	3-WAY SWITCH/SMART SWITCH
⚡	4-WAY SWITCH
⚡	SINGLE POLE JAMB SWITCH
⚡	SINGLE POLE MOTION SWITCH
⚡	SINGLE POLE SWITCH WITH WATERPROOF COVER
⚡	SINGLE POLE FAN SWITCH
⚡	SINGLE POLE TIMER SWITCH
⚡	SINGLE POLE DIMMER
⚡	3-WAY DIMMER
Ⓚ	KEYNOTE BUBBLE
Ⓚ	CEILING MOUNTED JUNCTION BOX
Ⓚ	WALL MOUNTED JUNCTION BOX
Ⓚ	REMOTE LOW VOLTAGE TRANSFORMER - SEE FIXTURE SCHEDULE
Ⓚ	CEILING MOUNTED EXHAUST FAN
Ⓚ	WALL MOUNTED EXHAUST FAN
Ⓚ	ELECTRIC FIREPLACE IGNITOR
Ⓚ	REMOTE LED DRIVER - SEE FIXTURE SCHEDULE
Ⓚ	SHADE AND DRAPE MOTOR (BY SHADE CONTRACTOR)
Ⓚ	LIGHTING CONTROL SYSTEM SWITCH LEG NUMBER
Ⓚ	DUPLEX RECEPTACLE
Ⓚ	1/2 HOT DUPLEX RECEPTACLE
Ⓚ	WEATHER PROOF GFCI DUPLEX RECEPTACLE
Ⓚ	SWITCHED W.P. GFCI DUPLEX RECEPTACLE

GENERAL NOTES	
1.	IT IS THE INTENT OF THESE DRAWINGS AND SPECIFICATIONS TO PROVIDE A LIGHTING SYSTEM WHICH IS COMPLETE AND OPERATIONAL. ALL MATERIALS AND EQUIPMENT NECESSARY TO ACCOMPLISH THIS INTENT SHALL BE FURNISHED AND INSTALLED BY THE ELECTRICAL CONTRACTOR. SUBSTITUTIONS TO SPECIFIED LIGHTING AND CONTROL EQUIPMENT SHALL NOT BE PERMITTED WITHOUT PRIOR REVIEW AND WRITTEN APPROVAL OF CREATIVE DESIGNS IN LIGHTING.
2.	THE GENERAL CONTRACTOR AND THE ELECTRICAL CONTRACTOR ARE RESPONSIBLE FOR REVIEWING THE INFORMATION ON ALL OF THESE PLANS. IF THERE ARE ERRORS OR OMISSIONS OR QUESTIONS CONCERNING THESE PLANS PLEASE CALL CREATIVE DESIGNS IN LIGHTING FOR CLARIFICATION.
3.	APPLICABLE REQUIREMENTS OF THE CURRENT NATIONAL ELECTRICAL CODE (NEC) AND STATE AND LOCAL CODES SHALL GOVERN AND DETERMINE THE MINIMUM STANDARD OF WORK. IN THE EVENT OF CONFLICT BETWEEN THIS DRAWING AND THE APPLICABLE CODE, THE CODE SHALL PREVAIL AND THE INSTALLATION SHALL BE MADE IN CONFORMANCE WITH THE CODE.
4.	EXCEPT WHERE SPECIFICALLY NOTED, CONTRACTOR SHALL INSTALL ALL EQUIPMENT IN ACCORDANCE WITH MANUFACTURERS RECOMMENDATIONS.
5.	ALL ELECTRICAL INSTALLATION TO MEET OR EXCEED THE REQUIREMENTS OF THE ELECTRICAL SPECIFICATIONS PREPARED BY THE PROJECT ELECTRICAL ENGINEER.
6.	ELECTRICAL CONTRACTOR SHALL PROVIDE PRIMARY AND SECONDARY OVERCURRENT PROTECTION FOR ALL 12-VOLT AND 24-VOLT REMOTE TRANSFORMERS AND LED DRIVERS. ELECTRICAL CONTRACTOR TO SIZE ALL SECONDARY WIRING FOR REMOTE TRANSFORMERS / DRIVERS TO PREVENT A VOLTAGE DROP OF MORE THAN 1 VOLT. FINAL LOCATION OF ALL REMOTE TRANSFORMERS / DRIVERS TO BE VERIFIED IN THE FIELD BY GENERAL CONTRACTOR AND OWNER'S REPRESENTATIVE.
7.	ELECTRICAL CONTRACTOR SHALL COORDINATE INSTALLATION OF ALL LIGHTING EQUIPMENT WITH THE GENERAL CONTRACTOR AND ANY APPLICABLE SUB-CONTRACTOR (I.E. FRAMING, MECHANICAL, CABINETRY, ETC.) PRIOR TO ROUGH-IN.
8.	COORDINATE WITH OWNER/INTERIORS FOR THE SPECIFICATION AND PROCUREMENT OF ALL DECORATIVE FIXTURES. DECORATIVE FIXTURES TO BE ASSEMBLED AND INSTALLED BY ELECTRICAL CONTRACTOR. VERIFY FINAL LOCATIONS AND MOUNTING HEIGHTS WITH OWNER AND/OR INTERIOR DESIGNER. CONTRACTOR TO COORDINATE DIMMING REQUIREMENTS FOR ALL DECORATIVE FIXTURES WITH DIMMING SYSTEM SPECIFICATIONS.
9.	ALL RECESSED TRIMS AND/OR TRIM RINGS SHALL BE PAINTED TO MATCH COLOR OF CEILING (INTERIOR AND EXTERIOR).
10.	COORDINATE WITH ARCHITECT/OWNER FOR MOUNTING HEIGHT AND FINAL LOCATIONS OF ALL WALL-BOX SWITCHES AND DIMMER DEVICES.
11.	ALL DEVICES (I.E. SWITCHES, RECEPTACLES, PHONE JACKS, TELEVISION JACKS, ETC.) TO BE DECORA STYLE AND ALL WALL-BOX DIMMERS SHALL BE LUTRON - DIVA SERIES OR APPROVED EQUAL. COORDINATE WITH ARCHITECT FOR FINISH COLOR IN EACH SPACE AND COORDINATE WITH FIXTURE SCHEDULE FOR DIMMING REQUIREMENTS. SIZE AND DERATE ALL DIMMERS ACCORDING TO MANUFACTURERS SPECIFICATIONS.
12.	ELECTRICAL CONTRACTOR'S BID SHALL INCLUDE TWO ELECTRICIANS FOR TWO (2) EVENINGS (4 HOUR MINIMUM EACH) FOR FINAL AIM AND FOCUS OF ALL ADJUSTABLE LIGHTING FIXTURES AND SCENE SETTING. CONTRACTOR TO PROVIDE ALL NECESSARY LADDERS/LIFTS AS REQUIRED.
13.	COORDINATE WITH ELECTRICAL SPECIFICATIONS FOR RECESSED FLOORBOX RECEPTACLES. RECEPTACLES TO BE CARLON #976-RFB - DEEP RECTANGULAR FLOOR PLUGS WITH COVER PLATE COLOR TO BE DETERMINED BY OWNER & INTERIOR DESIGNER OR APPROVED EQUAL AND EXTERIOR WALL MOUNTED WATERPROOF RECEPTACLES SHALL BE RECESSED WITH ARLINGTON #08R1W WATERPROOF IN-USE COVERS. VERIFY SWITCHING REQUIREMENTS AND LOCATIONS OF ALL FLOOR PLUGS WITH OWNER AND/OR INTERIOR DESIGNER.
14.	FOR SPECIFIC WIRING INFORMATION AND CIRCUITING REFER TO THE ELECTRICAL PLANS.
15.	ALL LIGHT FIXTURES TO UTILIZE HIGH EFFICACY LED SOURCES.

BENTLEY RENOVATION Fixture Schedule

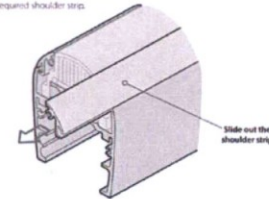
Notes: Verify all components and quantities. Refer to product specifications for complete fixture data.

Fixture Type	Fixture Specification	Lamp Specification	Fixture Wattage	Lead Type	Fixture Voltage	Accessories	Mounting
EM	ISOLITE CWL-6H-WH-1	LED: 4000K / 70+CRI (INTEGRAL TO FIXTURE)	17w	NON- DIM	120v		Wall Mount
wet location emergency wall sconce fixture with full cutoff optics This fixture type uses high efficacy lamps or sources. 1) In compliance with COS stipulations, emergency wall pack fixture to be a full cutoff optic.							
GZ	ACQUA LUNA-COLO-OFFQ / UNF10 / UNF051	LED: 3500K / 90+CRI (INTEGRAL TO FIXTURE)	12w	0-10V-DC	120v	Glare Shield	Surface Mount
1 foot linear wet location fixture with 30x60 degree optic and single side glare shield Driver: Integral This fixture type uses high efficacy lamps or sources. 1) 0-10V-DC dimming requires BOTH (1) #12-2 high voltage and (1) #16-2 low voltage wires.							
LU	LUNARE 613-SH461P-12-700R / L80 / LVR	MR16-4-2700-36 (BRIGHTNESS LED MR16)	4w	MLV	12VAC	Glare Louver	Floor Recessed
flush to grade 4" diameter wet location adjustable deeply recessed upright fixture with led lamp Transformer: Remote (see schedule) Requires: Finish: Natural Brass This fixture type uses high efficacy lamps or sources. 1) All LED MR16 lamps shall be Brightness LED rated for enclosed fixtures.							
TR	SERCO by ARSCHER REMOTE 12V 240-250V TAPERED MAGNETIC TRANSFORMERS	---		MLV	120v		Wall Mount
[T1] 150w/12VAC - Setback #1623-12 - type is uplights 1) Refer to fixture schedule for part numbers. Refer to plans for locations.							

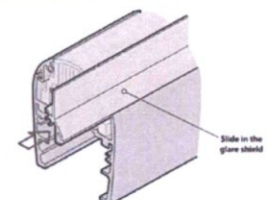
General Specification Notes

- 1) All recessed trims and/or trim rings shall be painted to match color of ceiling.
- 2) Electrical Contractor to determine fixture housing rating (IC, Non-IC or Remodel) unless otherwise noted.
- 3) No substitutions permitted without prior approval from Creative Designs in Lighting.

FITTING AN OPTIONAL GLARE SHIELD
Optional glare shields are available which can be fitted on either side of the emitter housing to help cancel the emitters from side view.
TO INSERT A GLARE SHIELD
1. Remove both of the end panels (see page 7).
2. Slide out the required shoulder strip.

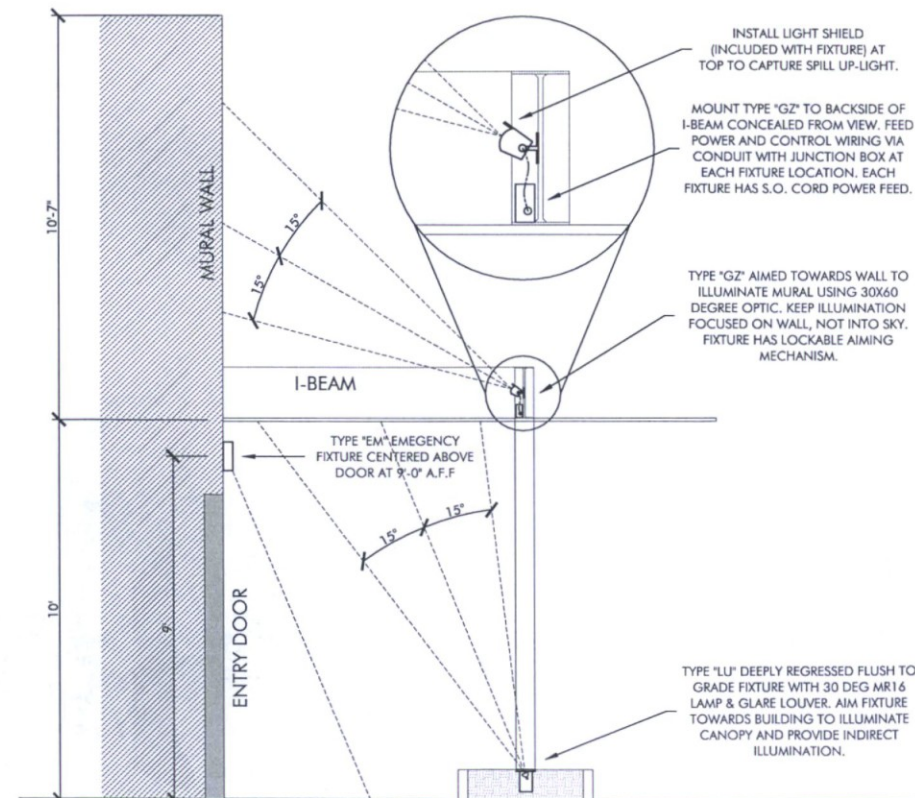


3. Slide in the glare shield to replace the removed shoulder strip.



4. Refit the end panels (see page 7).

2 LIGHTING GLARE SHIELD DETAIL
N.T.S.



1 LIGHTING SECTION DETAIL
SCALE: 1/2" = 1'-0"



CREATIVE DESIGNS
IN LIGHTING



15982 N. 78th St. Suite A
Scottsdale, Arizona 85260

602.248.7822
design@cdiltg.com
www.cdiltg.com

1978 41 2019
years of architectural
lighting design

BENTLEY RENOVATION
7070 N MARSHALL WAY, SCOTTSDALE, AZ 85251


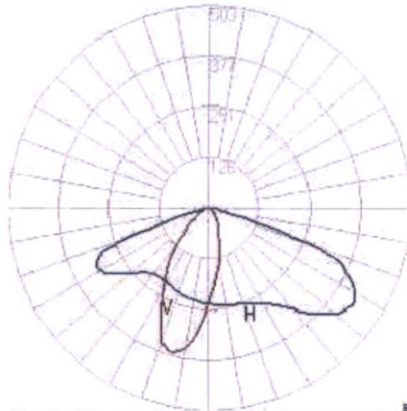
REVISIONS		
Δ	08.05.2019 COS STIPULATIONS	JG
Δ		
Δ		
Δ		
Δ		

DATE	08.05.2019
SCALE	N.T.S.
PROJECT NUMBER	103425-19
DRAWN BY	JG
CHECKED BY	MM
SHEET NAME	

LIGHTING NOTES,
SCHEDULE & DETAIL

SHEET NUMBER

AL0.0

FIXTURE ABBREVIATION	EM
FIXTURE GRAPHIC	
FIXTURE TYPE	FULL CUTOFF EMERGENCY WALL FIXTURE
FIXTURE ADD-ONS	N/A
LAMP TYPE UTILIZED	LED
PHOTOMETRIC DATA / CANDELA DISTRIBUTION CURVE	
	

isolite

TYPE EM

OWL

Outdoor Wet Location
Emergency Light

Features

- Architecturally appealing wet location LED light for indoor and outdoor applications.
- NEMA 3R/IP65 Rated for indoor/outdoor cold-weather and damp locations.
- Cold Weather Option (H) makes the OWL ideal for outdoor applications down to -13°F.
- Self Test / Self Diagnostic circuit comes standard reducing manual testing obligations.
- External access test switch for manual diagnostic testing.
- Photocell activation for nighttime/security lighting or switch controlled for normal lighting comes standard on both AC and EM models.
- Eight LEDs produce 1530 lumens in normal (mains mode) and 600 lumens in emergency battery backup mode.
- 4000°K CCT, CRI ≥ 70, L70 > 72,000 hours.
- UL listed 90 minute run-time.
- Self-compensating solid state Constant Current Charger provides extended float life and rapid recharge.
- Brownout detection ensures emergency illumination during periods of low line voltage.
- Premium long-life high temperature Nickel Cadmium battery.
- Integral push-to-test switch with easily visible bi-color LED diagnostic indicator.
- 120/277 VAC field-selectable inputs.
- Available as an AC only fixture.

Construction

- Quality Pressure Die-Cast Aluminum housing finished in durable polyester powder coat available in Bronze, White, Silver or Black Finish.
- Optional 0.5" threaded conduit top entry.
- Polycarbonate UV-resistant, one-piece optic lens assembly.
- UV stabilized polycarbonate lens resists yellowing and provides uniform light distribution.
- Large surface area LED heat sinking for optimum LED longevity.

Power Consumption

- EM Model - Float charge mode without lamps illuminated: 2 watts
- EM Model - Float charge mode with normal lamps illuminated: 17 watts
- EM Model - Optional Cold temperature model adds 15 watts intermittently (thermostat controlled)
- AC Only Model - 17 watts



Headquarters: 800-888-5483 • 610-647-8200 • www.isolite.com • Western Office: 800-799-5343 • 805-546-9669

D-7.2.3.0-257, REV-1, 20190308

isolite

OWL

Architectural Outdoor
LED Light

Ordering Information

Series

OWL

Operation

EM = Nickel Cadmium Battery Backup

AC = AC Only

Housing Color

W = White

BZ = Bronze

BK = Black

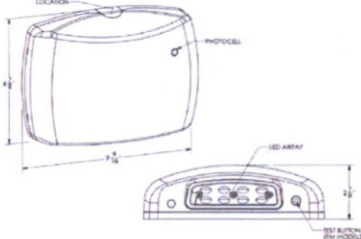
SL = Silver

Options

H = Internal Heater

Notes

1 = EM Only



Temperature Rating

- Without Internal Heater: From 32°F to 122°F
- With Internal Heater: From -13°F to 122°F

Approvals

- UL 924
- NEMA 3R Rated
- IP65 Certified
- NFPA 101 Life Safety Code
- NFPA 70-NEC
- OSHA

Warranty

- Isolite offers a 5-year limited warranty. For further details, refer to General Warranty and Obligations in the Isolite manual or on our website. Lamps not warranted.

OWL Emergency Mode
Spacing Guidelines

- Space: Outdoor 200' x 200' 1 wall
Egress Path: 6' from wall
Reflection: Ceiling 0%
Wall: 30%
Floor: 10%
Illuminance: Ave. 1.0 FC
Min. .01 FC
Uniformity: 40:1 Max/Min

Mounting Height	Spacing ft. (max) Center to Center
8'	48'
9'	55'
10'	60'
12'	53'
14'	45'

www.isolite.com

Headquarters: 31 Waterloo Avenue • Berwyn, PA 19312 • 800-888-5483 • 610-647-8200

Western Office: 3563 Suedo, Suite M • San Luis Obispo, CA 93401 • 800-799-5343 • 805-546-9669

D-7.2.3.0-257, REV-1, 20190308

Development Review Board

APPROVED

Stipulation Set

08/20/2019

bmoriarit

DATE

APPROVED BY



CREATIVE DESIGNS
IN LIGHTING



15982 N. 78th St. Suite A
Scottsdale, Arizona 85260

602.248.7822
design@cdltg.com
www.cdltg.com

1978 41 2019
years of architectural
lighting design

BENTLEY RENOVATION
7070 N MARSHALL WAY, SCOTTSDALE, AZ 85251

REVISIONS		
△	08.05.2019 COS STIPULATIONS	JG
△		
△		
△		
△		
△		

DATE	04.29.2019
SCALE	N.T.S.
PROJECT NUMBER	103425-19
DRAWN BY	JG
CHECKED BY	MM
SHEET NAME	

MANUFACTURER
CUT SHEETS

SHEET NUMBER

AL0.1

FIXTURE ABBREVIATION	GZ
FIXTURE GRAPHIC	
FIXTURE TYPE	30X60 DEG GRAZER
FIXTURE ADD-ONS	GLARE SHIELD
LAMP TYPE UTILIZED	LED
PHOTOMETRIC DATA / CANDELA DISTRIBUTION CURVE	

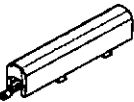
LINEAR ONE

TYPE GZ

ACCLAIM

EXTERIOR

LIGHTING



Client:

Project:

Type:

Order Code:

Quantity:

bin-one

cdm

With Linear One, we set out to produce a series that works with your vision instead of crowding it. Acclaim Lighting continually strives for simple goals during the design process: be useful, stay out of the way, and function wonderfully. Creativity begins with great design and Linear One is streamlined to work for you. We meticulously craft linear lights that install with no visible cables and create the clutter free space your work deserves. This means that subtlety enhances your aesthetic as Linear One remains hidden while serving as the powerhouse behind your visual creation. Refined to work with your creativity, Linear One provides end-to-end modular functionality that adapts to your needs and never works against them. Acclaim Lighting is motivated by the passion of its users and strives to produce the very best solutions in architectural lighting. We create beautiful products that work for creativity.

SPECIFICATIONS

Colors	2700K, 3000K, 3500K, 4000K (80 CRI or 90 CRI available), Red, Green, Blue, Amber
Beam Angles	10 x 10, 30 x 30, 60 x 60, 100 x 100, 10 x 25, 10 x 40, 10 x 70, 30 x 60, 40 x 70 Asymmetric (60 x 60 + 20 cft), Batwing (split 10 x 40 or 40 x 70)
Housing Lengths	1' (304.8mm), 4' (1219.2mm)
Control	0-100% dimming via internal 0-10V driver, DMX via optional UDM, wireless via optional Aia
Max Fixtures in Series	87 (24m)
Power Consumption	15.12W, 15.48W
Operating Voltage	100-277VAC, 50/60 Hz
Lumen Maintenance	L70 @ 150,000 hours (25 °C)
Mounting	90° mounting bracket included, flat mounting bracket optional
Finish	Silver / finished aluminum, marine and narsatorium environment capability standard
Material	Aluminum body - Type III hard coat anodized, polycarbonate lens
Ambient Operating Temperature	-40 F to 131 F (-40 C to 55 C)
IP Rating	IP66, wet location - marine environment housing standard
IK Rating	IK10, protection against 5 joule impact (40cm distance)
Fixture Connectors	IP66 End-to-end multi-pin connection cables included
Warranty	5 Years, limited
Weight	15.24 lbs, 45.97 lbs
Dimensions	L: 1.2' / 48" W: 2.12" H: 3.39" D: .305 / 12.20 Wt: 54 L: 80.2mm
Certifications	

acclaimlighting.com

SPECIFICATION SHEET 2.1.2

Specifications subject to change without notice

LINEAR ONE

TYPE GZ

ACCLAIM

EXTERIOR

LIGHTING

RELATED COMPONENTS

Optional Mounting Accessories



LNM1

1' mounting track for Linear One

Aluminum profile, screws not included



LNM4

4' mounting track for Linear One

Aluminum profile, screws not included



LNFMB

Flat Mounting Bracket for Linear One

2 pcs required per fixture, factory fitted option

Optional Beam Accessories



LNEG54

4' single sided glare shield for Linear One Exterior



LNEB1

1' extender bar for Linear One

Aluminum body, screws not included



LNEB2

2' extender bar for Linear One

Aluminum body, screws not included



LNEB3

3' extender bar for Linear One

Aluminum body, screws not included



LNELV1

1' full lower for Linear One Exterior (use 4 pcs, for 4' fixture)

3

acclaimlighting.com

SPECIFICATION SHEET 2.1.2

Specifications subject to change without notice

LINEAR ONE

TYPE GZ

ACCLAIM

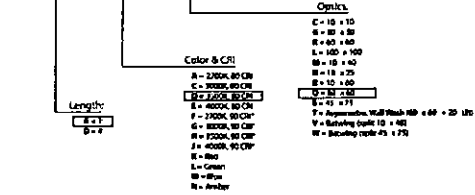
EXTERIOR

LIGHTING

ORDER CODES

* indicates special order

LNE# - COL# - OPT#



RELATED COMPONENTS

Feed Cables



LNFCS10

10' Feed Cable for Linear One Exterior

Multi-pin connector to bare wire AC = 0-10V

2

acclaimlighting.com

Link Cables



LNLCS1

1' Link Cable for Linear One Exterior

Multi-pin connector to multi-pin connector, use for curved runs

LNLCS1

1' Link Cable for Linear One Exterior

Multi-pin connector to multi-pin connector

LNLCS5

5' Link Cable for Linear One Exterior

Multi-pin connector to multi-pin connector

LNLCS10

10' Link Cable for Linear One Exterior

Multi-pin connector to multi-pin connector

SPECIFICATION SHEET 2.1.2

Specifications subject to change without notice

LINEAR ONE

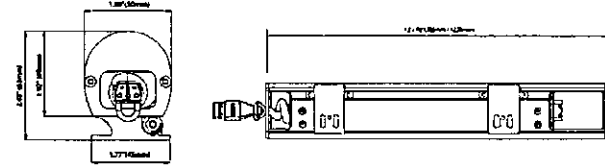
TYPE GZ

ACCLAIM

EXTERIOR

LIGHTING

DIMENSIONS



PHOTOMETRICS

Color	Lumens (per foot)	Max Candela	Efficiency (lm/w)	CRI	TMR90
2700K	739	5643	53	81.1	81.2
3000K	785	6291	67	82.5	81.3
3500K	772	5857	50	84.5	82.0
4000K	770	5790	55	85.4	83.1

Color	Lumens (per foot)	Max Candela	Efficiency (lm/w)	CRI	TMR90
2700K	574	4377	49	90.5	93
3000K	544	3644	47	93	93.7
3500K	569	4012	48	93.8	93.7
4000K	579	4703	48	90.1	90

4

acclaimlighting.com

SPECIFICATION SHEET 2.1.2

Specifications subject to change without notice



CREATIVE DESIGNS

IN LIGHTING



15982 N. 78th St. Suite A

Scottsdale, Arizona 85260

602.248.7822

design@cdltg.com

www.cdltg.com

1978 41 2019

years of architectural

lighting design

BENTLEY RENOVATION

7070 N MARSHALL WAY, SCOTTSDALE, AZ 85251

REVISIONS		
	08.05.2019	JG
	COS STIPULATIONS	


DATE	04.29.2019
SCALE	N.T.S.
PROJECT NUMBER	103425-19
DRAWN BY	JG
CHECKED BY	NM
SHEET NAME	

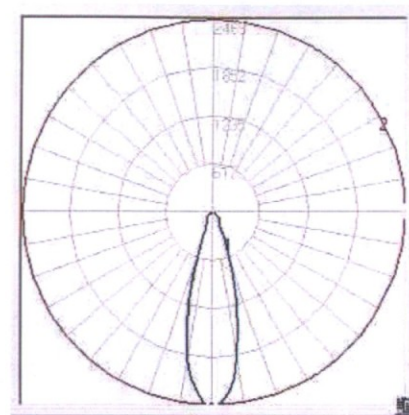
MANUFACTURER

CUT SHEETS

SHEET NUMBER

ALO.2

FIXTURE ABBREVIATION	LU
FIXTURE GRAPHIC	
FIXTURE TYPE	IN-GRADE UPLIGHT
FIXTURE ADD-ONS	HEXCELL LOUVER
LAMP TYPE UTILIZED	LED
PHOTOMETRIC DATA / CANDELA DISTRIBUTION CURVE	



Lumière
TYPE LU

DESCRIPTION
The Boca 613 is a tiny 4-1/2" diameter in-ground fixture for use with a low voltage MR16 lamp. The adjustable lamp assembly provides up to 22° vertical tilt and 360° horizontal rotation for precision uplighting, wall washing or general illumination in congested areas. Designed for recess mounting in concrete, brick, stone or dirt it is suitable drive-over applications.

SPECIFICATION FEATURES

Material
Recessed housing is constructed from corrosion-resistant stainless steel. Turn ring is precision-machined from corrosion-resistant 6061-T6 aluminum, solid brass or solid bronze.

Finish
Solid brass and stainless steel parts are natural finish. Painted surfaces are double protected by a chromate conversion undercoating and a thermoplastic polyester powder coat for max resistance and extended weatherability.

Gasket
Recessed housing and trim ring are sealed with a high temperature silicone o-ring gasket to prevent water intrusion.

Lens
Minimum 1/4" thick tempered glass lens, factory sealed with high temperature adhesive to prevent water intrusion and breakage due to thermal shock. Suitable for drive-over applications.

Hardware
Stainless steel hardware is standard to provide maximum corrosion-resistance.

Socket
Ceramic socket with 250° C Teflon® coated lead wires and GUS.3 bi-pin base.

Electrical
Remote 12V transformer required (not included). Available from Lumière as an accessory - see the Accessories & Technical Data section of this catalog for details. Bottom of fixture includes two 12-14 AWG brass female contact fittings for through wiring. Fixture also includes built-in wiring compartment.

Lamp
Not included. Some lamp compatible (10W Max).

Warranty
Lumière warrants its fixtures against defects in materials & workmanship for three (3) years. Auxiliary equipment such as transformers, ballasts and lamps carry the original manufacturer's warranty.

Recessed Housing
Recessed housing is available to ship in advance of complete fixture for rough-in purposes. Specify option LBB and order separately accompanying recessed housing from below.

613-xx-SB
recessed housing:
NOTE: replace xx with desired finish: BK, BZ, CS, VE, WT, NBR, or NBZ

CERTIFICATION DATA
UL and cUL, Wet Location Listed (SD-9001-2000)
LM79 / LM80 Compliant
NOM-Compliant
P80 Impressed Protection Rating

TECHNICAL DATA
Chief Inventor: MFRS
Low Voltage

ORDERING INFORMATION

Sample Number	613-20-SMR16-12-62-LBB
Size	613-4 1/2" dia Adjustable 22° Vertical/360° Horizontal Rotation Boca In-ground
Socket	SMR16-2000 Max. Halogen MR16, GUS.3 Base
Finish	SMR16-5015 Max. Halogen MR16, GUS.3 Base
Material	6061-T6 Aluminum, Solid Brass or Solid Bronze
Options	LBB-Housing Shipped in Advance (select LBB option and enter dB Data Box Referred Housing separately)

EATN
Pricing Subject to Change

TDN001016N
April 13, 2019
1 of 2

ACCESSORIES - ORDER SEPARATELY

Filter (2.8" Diameter)	Optical Lens (2.8" Diameter)	Optical Lens (2.8" Diameter)
F71 - Frost Diffuser	LSL - Linear Spread Lens (integrates standard beam spread)	ULS - Ultra-Low Profile Lens (lowers glare)
F72 - Amber Diffuser	BSF - Diffused Lens (lowers beam spread)	
F73 - Green Diffuser	OSL - Overall Spread Lens (increases standard beam spread)	
F74 - Medium Blue		
F75 - Yellow Diffuser		
F76 - Dark Blue Diffuser		
F77 - Light Blue Diffuser		
F78 - Neutral Density Diffuser		
F79 - Magenta Diffuser		
F80 - Red Color		
F81 - Blue Color		
F82 - Green Color		
F83 - Yellow Color		
F84 - Mercury Vapor		

PHOTOMETRIC DATA

Boca 613 Lamp=SMR16/NFL (EXT) CBGP=11,000

Distance to Illuminated Plane	Initial Beam Footcandle	Beam Diameter
15' ±	45	4' ±
10' ±	100	2' ±
8' ±	150	1' ±
6' ±	225	1' ±
4' ±	450	1' ±
2' ±	900	0' ±

Boca 613 Lamp=SMR16/NFL (EXT) CBGP=2200

Distance to Illuminated Plane	Initial Beam Footcandle	Beam Diameter
15' ±	12	16' ±
10' ±	25	8' ±
8' ±	45	6' ±
6' ±	81	4' ±
4' ±	181	2' ±
2' ±	362	1' ±

Boca 613 Lamp=SMR16/NFL (EXT) CBGP=2200

Distance to Illuminated Plane	Initial Beam Footcandle	Beam Diameter
15' ±	7	12' ±
10' ±	17	8' ±
8' ±	27	6' ±
6' ±	45	4' ±
4' ±	108	2' ±
2' ±	432	1' ±

Boca 613 Lamp=SMR16/WFL (FNU) CBGP=1200

Distance to Illuminated Plane	Initial Beam Footcandle	Beam Diameter
15' ±	1	11' ±
10' ±	11	7' ±
8' ±	17	6' ±
6' ±	26	4' ±
4' ±	67	2' ±
2' ±	269	1' ±

LAMP INFORMATION

Lamp	ANSI Code	Watts	Beam Spread	CBGP	%	Life (hrs.)	Base	Volts
SMR16/NSP	EXT	50	12°	11,000	3050	4000	GUS.3 bi-pin	12
SMR16/NFL	EXZ	50	25°	3200	3050	4000	GUS.3 bi-pin	12
SMR16/WFL	EXN	50	40°	2000	3050	4000	GUS.3 bi-pin	12
SMR16/WFL	FWW	50	60°	1200	3050	4000	GUS.3 bi-pin	12
SMR16/SP	FRA	35	20°	3900	3000	4000	GUS.3 bi-pin	12
SMR16/FL	FWW	35	40°	1000	3000	4000	GUS.3 bi-pin	12

NOTE: Interior quality lamps may adversely affect the performance of this product. Use only name brand lamps from reputable lamp manufacturers.

TECHNICAL INFORMATION

- Beam diameter is to 50% of maximum footcandle, rounded to the nearest half-foot.
- Footcandle values are initial. Apply appropriate light loss factors where necessary.
- Base lamp data shown. Consult lamp manufacturers to obtain detailed specifications for their lamps.

EATN
Pricing Subject to Change

TDN001016N
April 13, 2019
2 of 2

Development Review Board

APPROVED

Stipulation Set

08/20/2019
DATE

bmoriarit
APPROVED BY

MR16
TYPE LU

DESCRIPTION
The Brilliance LED MR16 Bipin is designed to better fit into standard, low voltage, MR16 fixtures and have a longer lamp life. These LEDs are thermally engineered to operate in enclosed fixtures and provide added security by automatically cooling down, and reducing lumen output when exposed to extreme heat (air temperatures above 125°F). There is no color shift when lumen output is reduced.

FEATURES

- Gen 5 earth tone colored housing
- Dimmable with most magnetic transformers
- Enhanced ESD (Electro-Static Discharge) protection (IEC-61000-4-2)
- Heat overload protection technology
- Fully potted PC board
- UL & FCC compliant

Wattage
15, 30, 40, 50, 60, 75, 100, 120

Beam Spread
4°, 6°, 10°, 12°, 15°, 20°, 25°, 30°, 35°, 40°, 45°, 50°, 55°, 60°, 65°, 70°, 75°, 80°, 85°, 90°, 95°, 100°, 110°, 120°, 130°, 140°, 150°, 160°, 170°, 180°

Color (485W)
Red, Green, Blue, Amber, Silver Green (SW)

Operating Range
8-25 VAC

Replaces
20W, 35W, 50W Halogen

CRI
85

IP
61

Chipset
CREE

Lamp Life (hours)
50,000

Warranty (years)
5

Part Number: MR16-4-2700-30
Part Number: MR16-K-XXXX-XXX

Wattage
15, 30, 40, 50, 60, 75, 100, 120

Beam spread
4°, 6°, 10°, 12°, 15°, 20°, 25°, 30°, 35°, 40°, 45°, 50°, 55°, 60°, 65°, 70°, 75°, 80°, 85°, 90°, 95°, 100°, 110°, 120°, 130°, 140°, 150°, 160°, 170°, 180°

Lumens
2200K 2700K 3000K 5700K

4W
275 325 350 400

5W
300 360 400 450

7W
600 690 715 750

Low Voltage

CREATIVE DESIGNS IN LIGHTING

15982 N. 78th St. Suite A
Scottsdale, Arizona 85260

602.248.7822
design@cditg.com
www.cditg.com

1978 41 2019
years of architectural
lighting design

BENTLEY RENOVATION
7070 N MARSHALL WAY, SCOTTSDALE, AZ 85251

REVISIONS		
Δ	08.05.2019 COS STIPULATIONS	JG
Δ		
Δ		
Δ		
Δ		
Δ		
Δ		
DATE	04.29.2019	
SCALE	N.T.S.	
PROJECT NUMBER	103425-19	
DRAWN BY	JG	
CHECKED BY	MM	
SHEET NAME	MANUFACTURER CUT SHEETS	
SHEET NUMBER	AL0.3	



CREATIVE DESIGNS
IN LIGHTING



15982 N. 78th St. Suite A
Scottsdale, Arizona 85260

602.248.7822
design@cdlitg.com
www.cdlitg.com

1978 41 2019
years of architectural
lighting design

BENTLEY RENOVATION
7070 N MARSHALL WAY, SCOTTSDALE, AZ 85251

REVISIONS		
△	08.05.2019 COS STIPULATIONS	JG
△		
△		
△		
△		

DATE	04.29.2019
SCALE	3/16"=1'-0"
PROJECT NUMBER	103425-19
DRAWN BY	JG
CHECKED BY	MM
SHEET NAME	

UPPER LIGHTING
PLAN

SHEET NUMBER
AL1

ADJACENT
PROPERTY

SUITE B

SUITE A

ADJACENT
PROPERTY

Development Review Board
APPROVED
Stipulation Set

08/20/2019

bmoriarit

DATE

APPROVED BY

0-10V DIMMING REQUIRES 120V LINE
VOLTAGE WITH #16-2 LOW VOLT
CONTROL WIRING

LOCATE IN INTERIOR ELECTRIC ROOM

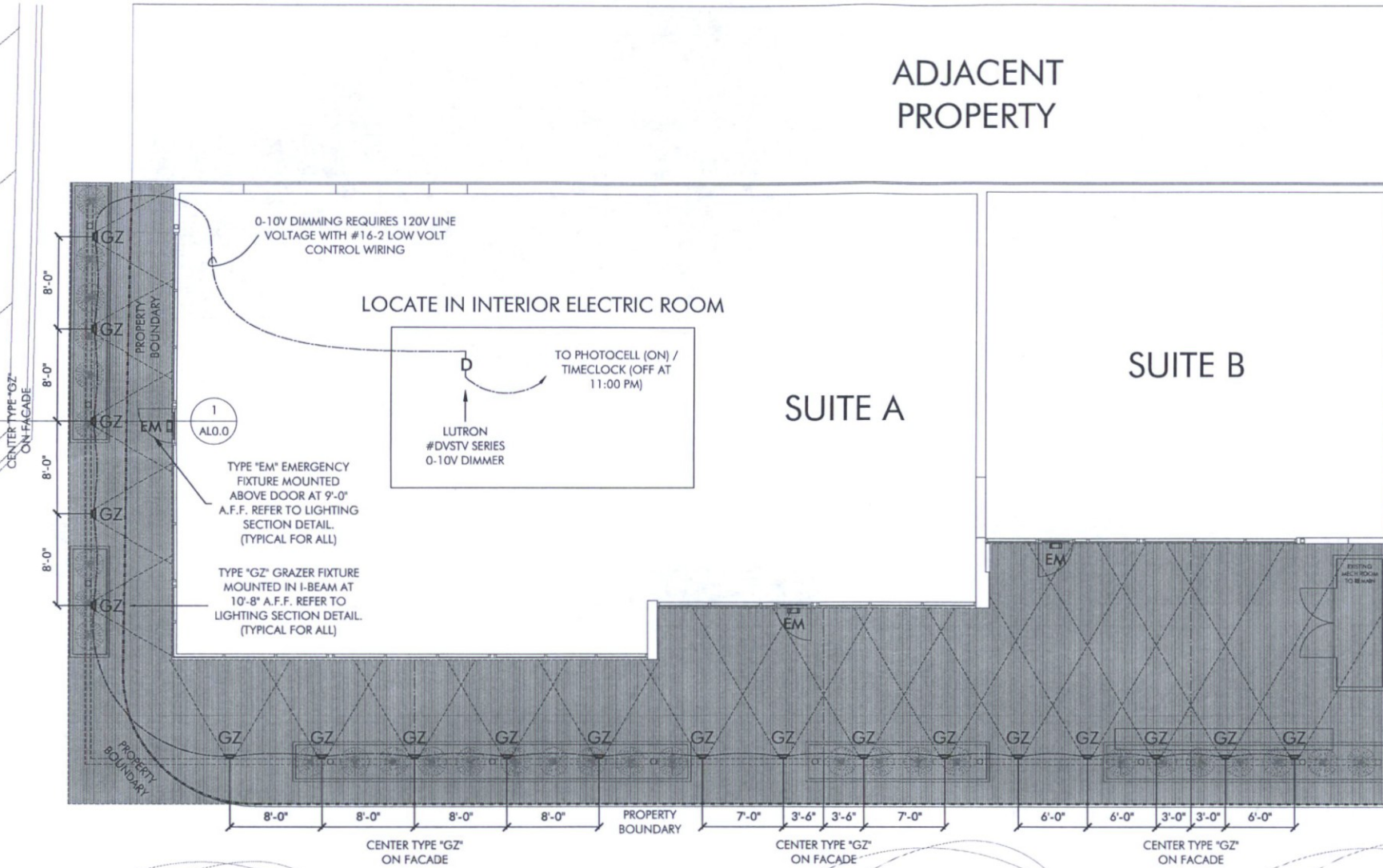
TO PHOTOCELL (ON) /
TIMECLOCK (OFF AT
11:00 PM)

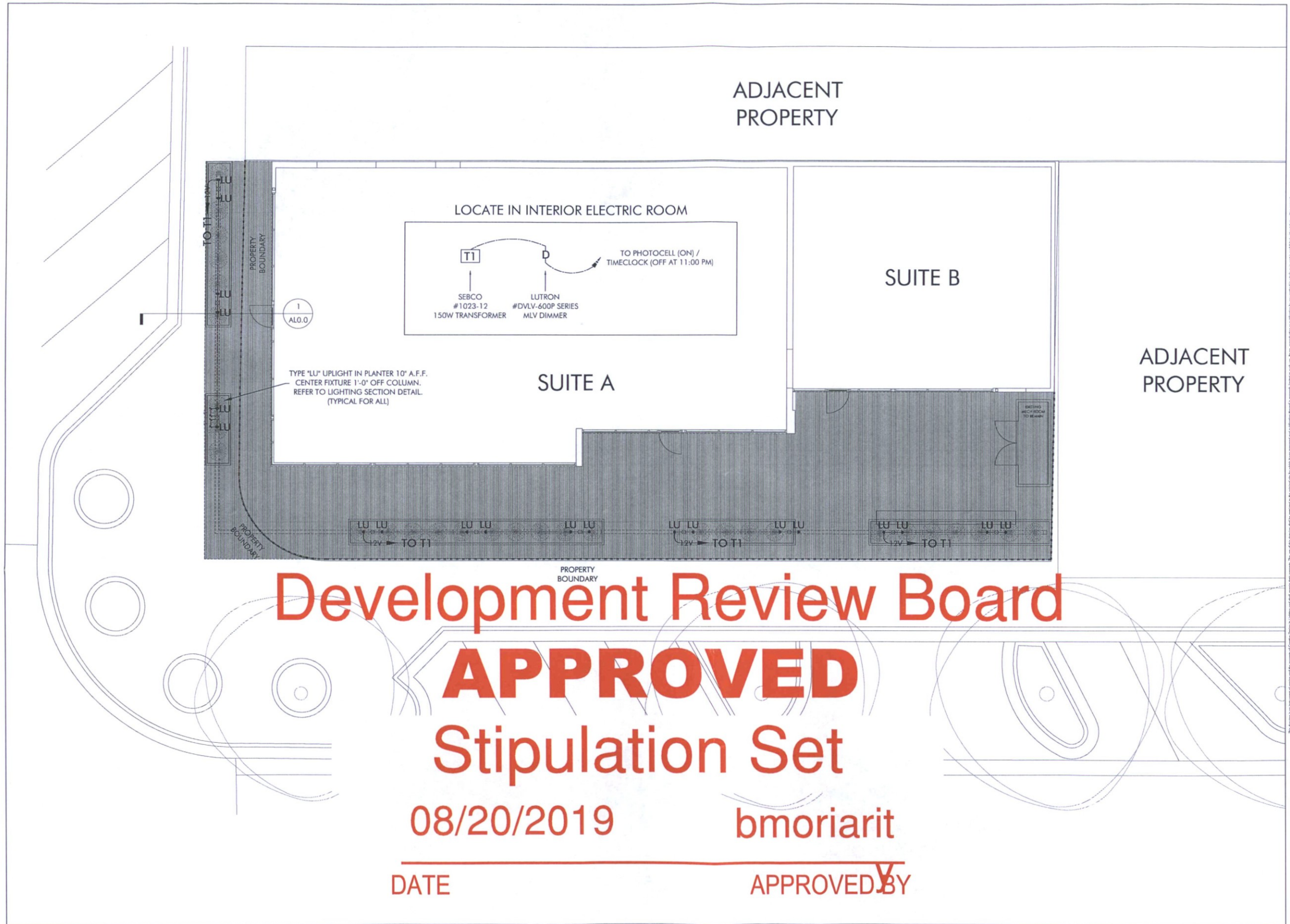
LUTRON
#DVSTV SERIES
0-10V DIMMER

1
AL0.0

TYPE "EM" EMERGENCY
FIXTURE MOUNTED
ABOVE DOOR AT 9'-0"
A.F.F. REFER TO LIGHTING
SECTION DETAIL.
(TYPICAL FOR ALL)

TYPE "GZ" GRAZER FIXTURE
MOUNTED IN I-BEAM AT
10'-8" A.F.F. REFER TO
LIGHTING SECTION DETAIL.
(TYPICAL FOR ALL)






Development Review Board

APPROVED


Stipulation Set

08/20/2019 bmoriarit

DATE APPROVED BY



CREATIVE DESIGNS
IN LIGHTING



15982 N. 78th St. Suite A
Scottsdale, Arizona 85260

602.248.7822
design@cdlitg.com
www.cdlitg.com

1978 **41** 2019
years of architectural
lighting design

BENTLEY RENOVATION
7070 N MARSHALL WAY, SCOTTSDALE, AZ 85251

REVISIONS		
△	08.05.2019 COS STIPULATIONS	JG
△		
△		
△		
△		
DATE 04.29.2019		
SCALE 3/16"=1'-0"		
PROJECT NUMBER 103425-19		
DRAWN BY JG		
CHECKED BY MM		
SHEET NAME		
LOWER LIGHTING PLAN		
SHEET NUMBER		
AL2		

Development Review Board

ADJACENT
PROPERTY

APPROVED

Stipulation Set

08/20/2019

SUITE A

SUITE B
bmoriarit

DATE

APPROVED BY

ADJACENT
PROPERTY



CREATIVE DESIGNS
IN LIGHTING



15982 N. 78th St. Suite A
Scottsdale, Arizona 85260

602.248.7822
design@cdiltg.com
www.cdiltg.com

1978 41 2019
years of architectural
lighting design

BENTLEY RENOVATION
7070 N MARSHALL WAY, SCOTTSDALE, AZ 85251

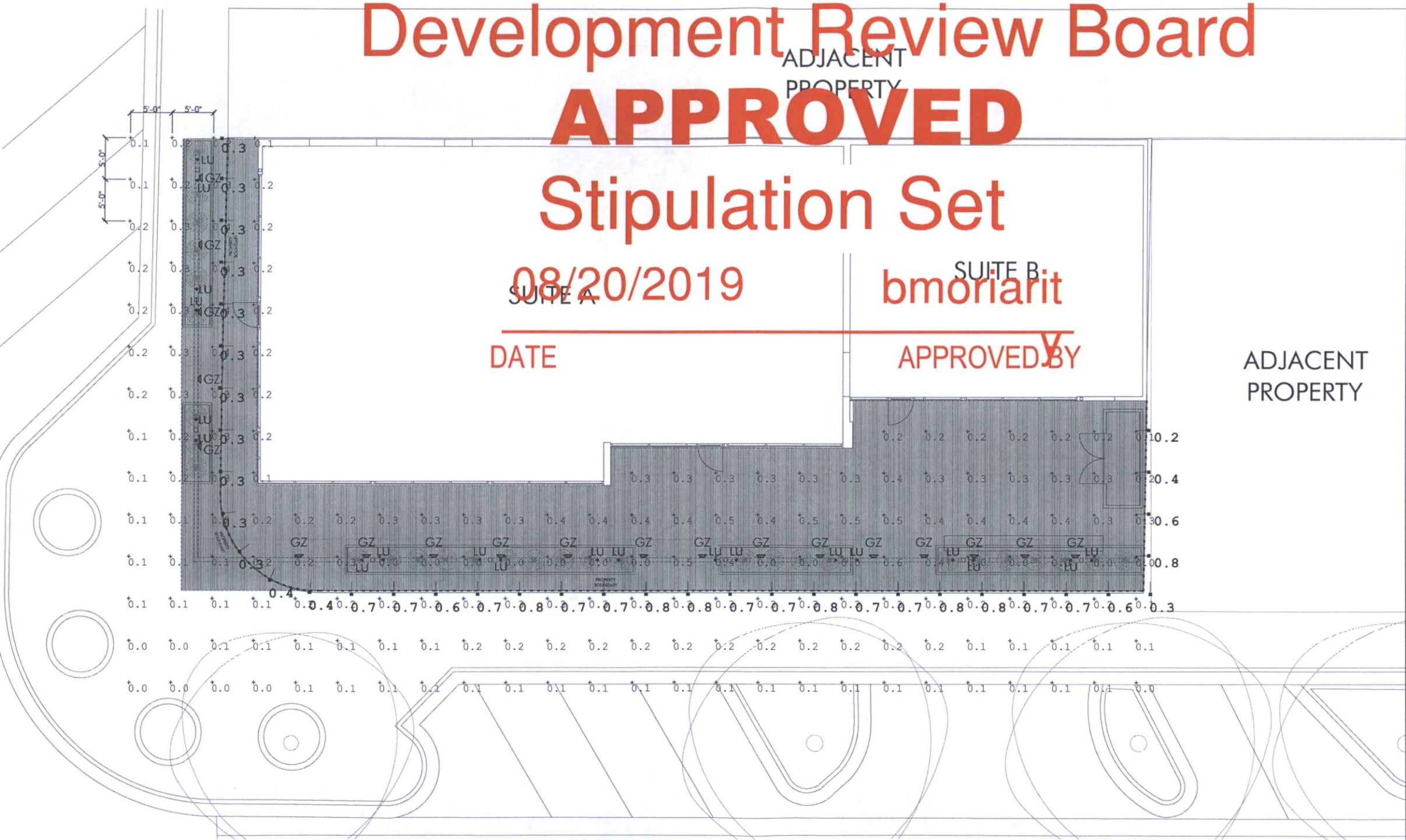
REVISIONS		
△	08.05.2019 COS STIPULATIONS	JG
△		
△		
△		
△		

DATE	04.29.2019
SCALE	3/16"=1'-0"
PROJECT NUMBER	103425-19
DRAWN BY	JG
CHECKED BY	NM
SHEET NAME	

PHOTOMETRIC
LIGHTING PLAN

SHEET NUMBER

AL3



CALCULATION SUMMARY TABLE

POINT	LABEL	AVG	MAX	MIN
*0.0	HORIZONTAL ILLUM. @ GRADE	0.20 FC	0.60 FC	0 FC
—*0.0	VERTICAL ILLUM. @ 6 FT A.F.F.	0.61 FC	0.80 FC	0.20 FC

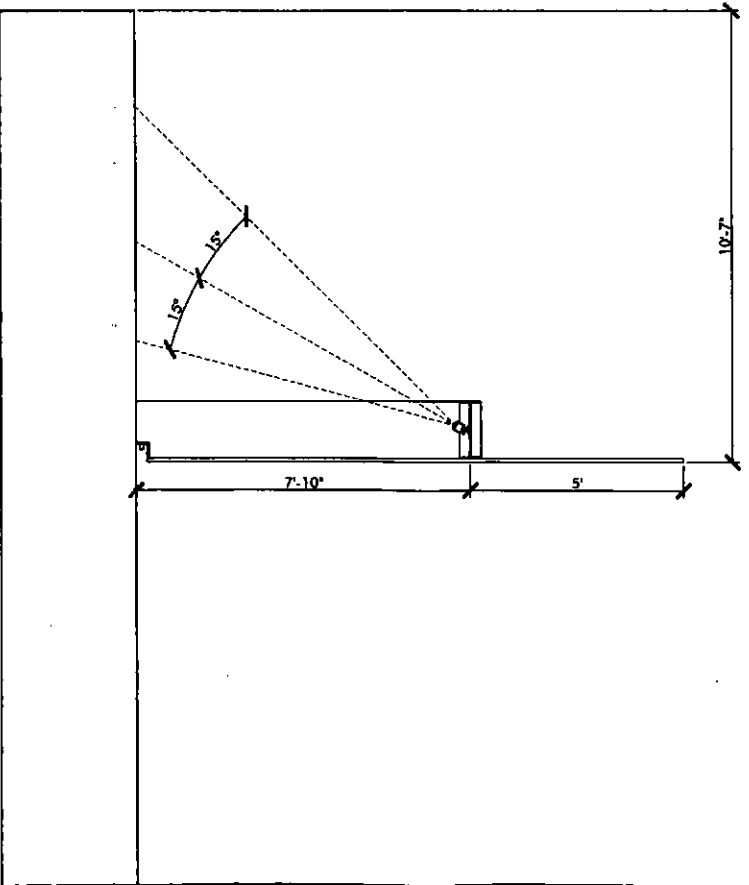
* ZONE: E-4 URBAN/PEDESTRIAN ACTIVITY AREA

FIXTURE SCHEDULE

SYMBOL	ABBRV.	MANUF. CATALOG NO.	WATTS	LUMENS	CCT	HEIGHT	LLF UTILIZED
	GZ	LNEA-COLD-OPTQ / LNFC10 / LNEGS1	LED 12W	772	3500K	10'-8" A.F.F.	1.0
	LU	613-50MR16-12-NBR / LBB / LVR / MR16-4-2700-30	LED 4W	325	2700K	0'-10" A.F.F.	1.0

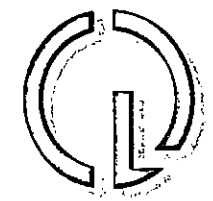
LIGHTING PLAN SYMBOL LEGEND	
⚡	SINGLE POLE SWITCH
⚡	3-WAY SWITCH/SMART SWITCH
⚡	4-WAY SWITCH
⚡	SINGLE POLE JAMB SWITCH
⚡	SINGLE POLE MOTION SWITCH
⚡	SINGLE POLE SWITCH WITH WATERPROOF COVER
⚡	SINGLE POLE FAN SWITCH
⚡	SINGLE POLE TIMER SWITCH
⚡	SINGLE POLE DIMMER
⚡	3-WAY DIMMER
⚡	KEYNOTE BUBBLE
⚡	CEILING MOUNTED JUNCTION BOX
⚡	WALL MOUNTED JUNCTION BOX
⚡	REMOTE LOW VOLTAGE TRANSFORMER - SEE FIXTURE SCHEDULE
⚡	CEILING MOUNTED EXHAUST FAN
⚡	WALL MOUNTED EXHAUST FAN
⚡	ELECTRIC FIREPLACE IGNITOR
⚡	REMOTE LED DRIVER - SEE FIXTURE SCHEDULE
⚡	SHADE AND DRAPE MOTOR (BY SHADE CONTRACTOR)
⚡	LIGHTING CONTROL SYSTEM CONTROL STATION
⚡	LIGHTING CONTROL SYSTEM HUMID LOCATION STATION
⚡	LIGHTING CONTROL SYSTEM STATION WITH WATERPROOF COVER BY OTHERS
⚡	LIGHTING CONTROL SYSTEM SWITCH LEG NUMBER
⚡	DUPLEX RECEPTACLE
⚡	1/2 HOT DUPLEX RECEPTACLE
⚡	WEATHER PROOF GFCI DUPLEX RECEPTACLE
⚡	SWITCHED W F GFCI DUPLEX RECEPTACLE
⚡	1/2 HOT FLOOR PLUG RECEPTACLE
⚡	MOTION DETECTOR
⚡	CEILING MOUNTED DECORATIVE LUMINAIRE
⚡	WALL MOUNTED DECORATIVE LUMINAIRE
NOTE: SOME SYMBOLS ON THIS LEGEND MAY NOT BE USED ON THIS PROJECT	

GENERAL NOTES	
1	IT IS THE INTENT OF THESE DRAWINGS AND SPECIFICATIONS TO PROVIDE A LIGHTING SYSTEM WHICH IS COMPLETE AND OPERATIONAL. ALL MATERIALS AND EQUIPMENT NECESSARY TO ACCOMPLISH THIS INTENT SHALL BE FURNISHED AND INSTALLED BY THE ELECTRICAL CONTRACTOR. SUBSTITUTIONS TO SPECIFIED LIGHTING AND CONTROL EQUIPMENT SHALL NOT BE PERMITTED WITHOUT PRIOR REVIEW AND WRITTEN APPROVAL OF CREATIVE DESIGNS IN LIGHTING.
2	THE GENERAL CONTRACTOR AND THE ELECTRICAL CONTRACTOR ARE RESPONSIBLE FOR REVIEWING THE INFORMATION ON ALL OF THESE PLANS. IF THERE ARE ERRORS OR OMISSIONS OR QUESTIONS CONCERNING THESE PLANS PLEASE CALL CREATIVE DESIGNS IN LIGHTING FOR CLARIFICATION.
3	APPLICABLE REQUIREMENTS OF THE CURRENT NATIONAL ELECTRICAL CODE (NEC) AND STATE AND LOCAL CODES SHALL GOVERN AND DETERMINE THE MINIMUM STANDARD OF WORK. IN THE EVENT OF CONFLICT BETWEEN THIS DRAWING AND THE APPLICABLE CODE, THE CODE SHALL PREVAIL AND THE INSTALLATION SHALL BE MADE IN CONFORMANCE WITH THE CODE.
4	EXCEPT WHERE SPECIFICALLY NOTED, CONTRACTOR SHALL INSTALL ALL EQUIPMENT IN ACCORDANCE WITH MANUFACTURERS RECOMMENDATIONS.
5	ALL ELECTRICAL INSTALLATION TO MEET OR EXCEED THE REQUIREMENTS OF THE ELECTRICAL SPECIFICATIONS PREPARED BY THE PROJECT ELECTRICAL ENGINEER.
6	ELECTRICAL CONTRACTOR SHALL PROVIDE PRIMARY AND SECONDARY OVERCURRENT PROTECTION FOR ALL 12-VOLT AND 24-VOLT REMOTE TRANSFORMERS AND LED DRIVERS. ELECTRICAL CONTRACTOR TO SIZE ALL SECONDARY WIRING FOR REMOTE TRANSFORMERS / DRIVERS TO PREVENT A VOLTAGE DROP OF MORE THAN 1 VOLT. FINAL LOCATION OF ALL REMOTE TRANSFORMERS / DRIVERS TO BE VERIFIED IN THE FIELD BY GENERAL CONTRACTOR AND OWNER'S REPRESENTATIVE.
7	ELECTRICAL CONTRACTOR SHALL COORDINATE INSTALLATION OF ALL LIGHTING EQUIPMENT WITH THE GENERAL CONTRACTOR AND ANY APPLICABLE SUB-CONTRACTOR (E.G. FRAMING, MECHANICAL, CABINETRY, ETC.) PRIOR TO ROUGH-IN.
8	COORDINATE WITH OWNER/INTERIORS FOR THE SPECIFICATION AND PROCUREMENT OF ALL DECORATIVE FIXTURES. DECORATIVE FIXTURES TO BE ASSEMBLED AND INSTALLED BY ELECTRICAL CONTRACTOR. VERIFY FINAL LOCATIONS AND MOUNTING HEIGHTS WITH OWNER AND/OR INTERIOR DESIGNER. CONTRACTOR TO COORDINATE DIMMING REQUIREMENTS FOR ALL DECORATIVE FIXTURES WITH DIMMING SYSTEM SPECIFICATIONS.
9	ALL RECESSED TRIMS AND/OR TRIM RINGS SHALL BE PAINTED TO MATCH COLOR OF CEILING (INTERIOR AND EXTERIOR).
10	COORDINATE WITH ARCHITECT/OWNER FOR MOUNTING HEIGHT AND FINAL LOCATIONS OF ALL WALL-BOX SWITCHES AND DIMMER DEVICES.
11	ALL DEVICES (I.E. SWITCHES, RECEPTACLES, PHONE JACKS, TELEVISION JACKS, ETC.) TO BE DECORATIVE STYLE AND ALL WALL-BOX DIMMERS SHALL BE LUTRON - DIVA SERIES OR APPROVED EQUAL. COORDINATE WITH ARCHITECT FOR FINISH COLOR IN EACH SPACE AND COORDINATE WITH FIXTURE SCHEDULE FOR DIMMING REQUIREMENTS. SIZE AND DEBATE ALL DIMMERS ACCORDING TO MANUFACTURERS SPECIFICATIONS.
12	ELECTRICAL CONTRACTORS BID SHALL INCLUDE TWO ELECTRICIANS FOR TWO (2) EVENINGS (4 HOUR MINIMUM EACH) FOR FINAL AIM AND FOCUS OF ALL ADJUSTABLE LIGHTING FIXTURES AND SCENE SETTING. CONTRACTOR TO PROVIDE ALL NECESSARY LADDERS/LIFTS AS REQUIRED.
13	COORDINATE WITH ELECTRICAL SPECIFICATIONS FOR RECESSED FLOORBOX RECEPTACLES. RECEPTACLES TO BE CABLON #9796-RPS - DEEP RECTANGULAR FLOOR PLUGS WITH COVER PLATE COLOR TO BE DETERMINED BY OWNER & INTERIOR DESIGNER OR APPROVED EQUAL. AND EXTERIOR WALL MOUNTED WATERPROOF RECEPTACLES SHALL BE RECESSED WITH ARLINGTON #DWB11W WATERPROOF IN-USE COVERS. VERIFY SWITCHING REQUIREMENTS AND LOCATIONS OF ALL FLOOR PLUGS WITH OWNER AND/OR INTERIOR DESIGNER.
14	FOR SPECIFIC WIRING INFORMATION AND CIRCUITING REFER TO THE ELECTRICAL PLANS.
15	COORDINATE WITH ARCHITECT FOR SPECIFICATION AND PROCUREMENT OF CEILING FANS. FANS TO BE ASSEMBLED AND INSTALLED BY ELECTRICAL CONTRACTOR.



WALL SECTION DETAIL
SCALE: 1/2" = 1'-0"

22-DR-2019
4/30/2019



CREATIVE DESIGNS
IN LIGHTING



15982 N. 78th St Suite A
Scottsdale, Arizona 85260

602.248.7822
design@cdltg.com
www.cdltg.com

1978 41 2019
years of architectural
lighting design

BENTLEY RENOVATION
7030 EAST 3RD AVENUE, SCOTTSDALE, AZ 85251

REVISIONS	
△	
△	
△	
△	
△	
△	

DATE	04/20/2019
SCALE	1/4" = 1'-0"
PROJECT NUMBER	
DRAWN BY	JJ
CHECKED BY	MM
SHEET NAME	

LIGHTING NOTES
AND SCHEDULES

SHEET NUMBER

ALO



CREATIVE DESIGNS
IN LIGHTING



15982 N. 78th St. Suite A
Scottsdale, Arizona 85260

602.248.7822
design@cdltg.com
www.cdltg.com

1978 **41** years
of architectural
lighting design

BENTLEY RENOVATION

7030 EAST 3RD AVENUE, SCOTTSDALE, AZ 85251

REVISIONS

△		
△		
△		
△		
△		
△		

DATE

04.22.2019

SCALE

3/16"=1'-0"

PROJECT NUMBER

DRAWN BY

JG

CHECKED BY

MM

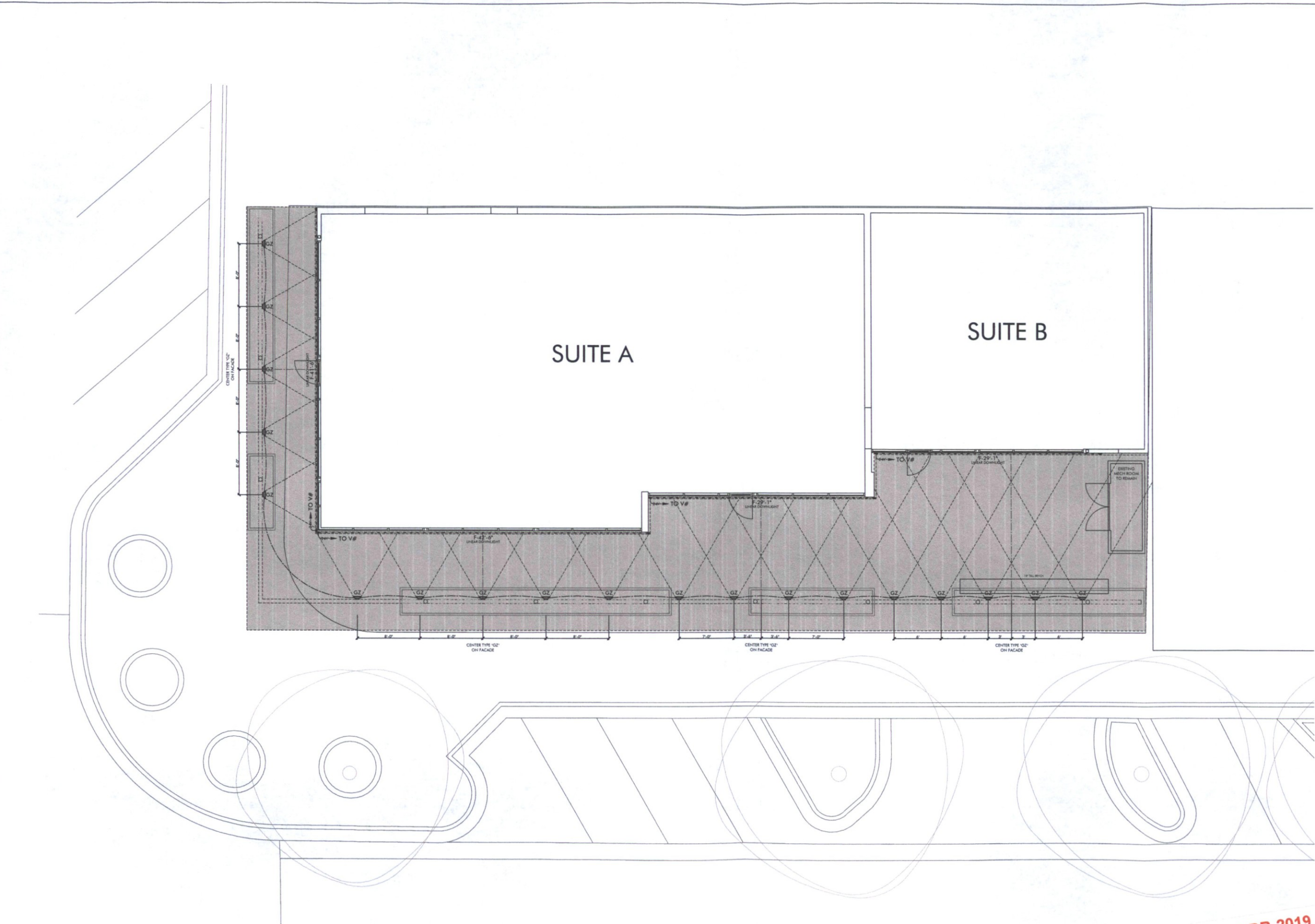
SHEET NAME

LIGHTING PLAN

SHEET NUMBER

AL1

This drawing is an illustration of a proposed lighting design and is not a construction document. It is intended to be used in conjunction with the architectural drawings and specifications for the project. The use of this drawing and the information contained herein is at the user's sole risk. Creative Designs in Lighting, Inc. is not responsible for any errors or omissions in this drawing or for any consequences arising from the use of this drawing.



22-DR-2019
4/30/2019



CREATIVE DESIGNS
IN LIGHTING



15982 N. 78th St. Suite A
Scottsdale, Arizona 85260

602.248.7822
design@cdlitg.com
www.cdlitg.com

1978 **41** 2019
years of architectural
lighting design

BENTLEY RENOVATION

7030 EAST 3RD AVENUE, SCOTTSDALE, AZ 85251

This drawing is an instrument of service and the property of Creative Designs in Lighting and shall remain their property. The use of this drawing and the materials to be installed in the original site for which it was prepared and publication based is expressly limited to such use. Reuse, reproduction or publication for any method in whole or in part is prohibited without their written consent.

REVISIONS

△		
△		
△		
△		
△		

DATE

04.22.2019

SCALE

3/16"=1'-0"

PROJECT NUMBER

DRAWN BY

JG

CHECKED BY

MM

SHEET NAME

LIGHTING
PLAN

SHEET NUMBER

AL1

22-DR-2019
4/30/2019

DESIGN DEVELOPMENT SET - NOT FOR CONSTRUCTION