

**Simulations**  
**Photos**  
**All Graphics (no plans)**



## Chen + Suchart Studio

property address:  
4161 N Marshall Way  
Scottsdale, AZ 85251



1 - looking north



3 - looking south



2 - looking west



4 - looking east



**Chen + Suchart Studio**



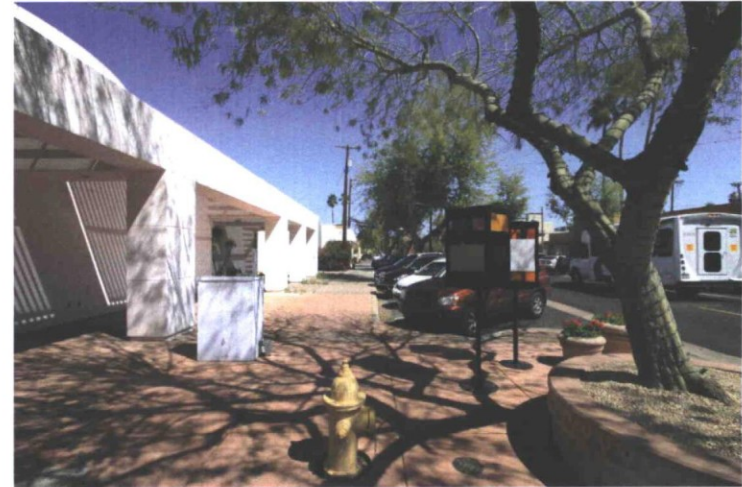
5 - looking north



7 - looking south



6 - looking west



8 - looking east



**Chen + Suchart Studio**



9 - looking north



11 - looking south



10 - looking west



12 - looking east

**Chen + Suchart Studio**



# BENTLEY RENOVATION

Scottsdale, Arizona

Lighting Fixture Specification Manual

April 29, 2019

Project #103425-19



## GENERAL NOTES

- 01 IT IS THE INTENT OF THESE DRAWINGS AND SPECIFICATIONS TO PROVIDE A LIGHTING SYSTEM WHICH IS COMPLETE AND OPERATIONAL. ALL MATERIALS AND EQUIPMENT NECESSARY TO ACCOMPLISH THIS INTENT SHALL BE FURNISHED AND INSTALLED BY THE ELECTRICAL CONTRACTOR. SUBSTITUTIONS TO SPECIFIED LIGHTING AND CONTROL EQUIPMENT SHALL NOT BE PERMITTED WITHOUT PRIOR REVIEW AND WRITTEN APPROVAL OF CREATIVE DESIGNS IN LIGHTING.
- 02 THE GENERAL CONTRACTOR AND THE ELECTRICAL CONTRACTOR ARE RESPONSIBLE FOR REVIEWING THE INFORMATION ON ALL OF THESE PLANS. IF THERE ARE ERRORS OR OMISSIONS OR QUESTIONS CONCERNING THESE PLANS PLEASE CALL CREATIVE DESIGNS IN LIGHTING FOR CLARIFICATION.
- 03 APPLICABLE REQUIREMENTS OF THE CURRENT NATIONAL ELECTRICAL CODE (NEC) AND STATE AND LOCAL CODES SHALL GOVERN AND DETERMINE THE MINIMUM STANDARD OF WORK. IN THE EVENT OF CONFLICT BETWEEN THIS DRAWING AND THE APPLICABLE CODE, THE CODE SHALL PREVAIL AND THE INSTALLATION SHALL BE MADE IN CONFORMANCE WITH THE CODE.
- 04 EXCEPT WHERE SPECIFICALLY NOTED, CONTRACTOR SHALL INSTALL ALL EQUIPMENT IN ACCORDANCE WITH MANUFACTURER'S RECOMMENDATIONS.
- 05 ALL ELECTRICAL INSTALLATION TO MEET OR EXCEED THE REQUIREMENTS OF THE ELECTRICAL SPECIFICATIONS PREPARED BY THE PROJECT ELECTRICAL ENGINEER.
- 06 ELECTRICAL CONTRACTOR SHALL PROVIDE PRIMARY AND SECONDARY OVERCURRENT PROTECTION FOR ALL 12-VOLT AND 24-VOLT REMOTE TRANSFORMERS AND LED DRIVERS. ELECTRICAL CONTRACTOR TO SIZE ALL SECONDARY WIRING FOR REMOTE TRANSFORMERS / DRIVERS TO PREVENT A VOLTAGE DROP OF MORE THAN 1 VOLT. FINAL LOCATION OF ALL REMOTE TRANSFORMERS / DRIVERS TO BE VERIFIED IN THE FIELD BY GENERAL CONTRACTOR AND OWNER'S REPRESENTATIVE.
- 07 ELECTRICAL CONTRACTOR SHALL COORDINATE INSTALLATION OF ALL LIGHTING EQUIPMENT WITH THE GENERAL CONTRACTOR AND ANY APPLICABLE SUB-CONTRACTOR (I.E. FRAMING, MECHANICAL, CABINETRY, ETC.) PRIOR TO ROUGH-IN.
- 08 COORDINATE WITH OWNER/INTERIORS FOR THE SPECIFICATION AND PROCUREMENT OF ALL DECORATIVE FIXTURES. DECORATIVE FIXTURES TO BE ASSEMBLED AND INSTALLED BY ELECTRICAL CONTRACTOR. VERIFY FINAL LOCATIONS AND MOUNTING HEIGHTS WITH OWNER AND/OR INTERIOR DESIGNER. CONTRACTOR TO COORDINATE DIMMING REQUIREMENTS FOR ALL DECORATIVE FIXTURES WITH DIMMING SYSTEM SPECIFICATIONS.
- 09 **ALL RECESSED TRIMS AND/OR TRIM RINGS SHALL BE PAINTED TO MATCH COLOR OF CEILING (INTERIOR AND EXTERIOR).**
- 10 COORDINATE WITH ARCHITECT/OWNER FOR MOUNTING HEIGHT AND FINAL LOCATIONS OF ALL WALL-BOX SWITCHES AND DIMMER DEVICES.
- 11 ALL DEVICES (I.E. SWITCHES, RECEPTACLES, PHONE JACKS, TELEVISION JACKS, ETC.) TO BE DECORA STYLE AND ALL WALL-BOX DIMMERS SHALL BE LUTRON - DIVA SERIES OR APPROVED EQUAL. COORDINATE WITH ARCHITECT FOR FINISH COLOR IN EACH SPACE AND COORDINATE WITH FIXTURE SCHEDULE FOR DIMMING REQUIREMENTS. SIZE AND DERATE ALL DIMMERS ACCORDING TO MANUFACTURERS SPECIFICATIONS.
- 12 ELECTRICAL CONTRACTOR'S BID SHALL INCLUDE TWO ELECTRICIANS FOR TWO (2) EVENINGS (4 HOUR MINIMUM EACH) FOR FINAL AIM AND FOCUS OF ALL ADJUSTABLE LIGHTING FIXTURES AND SCENE SETTING. CONTRACTOR TO PROVIDE ALL NECESSARY LADDERS/LIFTS AS REQUIRED.
- 13 COORDINATE WITH ELECTRICAL SPECIFICATIONS FOR RECESSED FLOOR RECEPTACLES. RECEPTACLES TO BE CARLON #976-RFB - DEEP RECTANGULAR FLOOR PLUGS WITH COVER PLATE COLOR TO BE DETERMINED BY OWNER & INTERIOR DESIGNER OR APPROVED EQUAL AND EXTERIOR WALL MOUNTED WATERPROOF RECEPTACLES SHALL BE RECESSED WITH ARLINGTON #DBVRIW WATERPROOF IN-USE COVERS. VERIFY SWITCHING REQUIREMENTS AND LOCATIONS OF ALL FLOOR PLUGS WITH OWNER AND/OR INTERIOR DESIGNER.
- 14 FOR SPECIFIC WIRING INFORMATION AND CIRCUITING REFER TO THE ELECTRICAL PLANS.
- 15 ALL FIXTURES TO UTILIZE HIGH-EFFICACY LED SOURCES.



# BENTLEY RENOVATION

## Fixture Schedule



**Note:** Verify all components and quantites. Refer to product specifications for complete fixture data.

FixtureType	Fixture Specification	Lamp Specification	Fixture Wattage	Load Type	Fixture Voltage		Accessories	Mounting
EM	HOLOPHANE CZA9A-W-EXT	(2) 6 WATT WEDGE-BASE XENON LAMPS (INCLUDED)	12w	NON-DIM	120v			Wall Mount

wet location emergency wall sconce fixture

GZ	ACCLAIM LNEA-COLD-OPTQ / LNFC10 / LNEGS1	LED: 3500K   80+CRI (INTEGRAL TO FIXTURE)	12w	0-10vDC	120v		Glare Shield	Surface Mount
----	---	--	-----	---------	------	--	--------------	---------------

1 foot linear wet location fixture with 30x60 degree optic and single side glare shield

Driver: Integral

This fixture type uses high efficacy lamps or sources.

1) 0-10vDC dimming requires BOTH (1) #12-2 high voltage and (1) #16-2 low voltage wires.

LU	LUMIERE 613-50MR16-12-NBR / LBB / LVR	MR16-4-2700-30 (Brilliance LED MR16)	4w	MLV	12vAC		Glare Louver	Floor Recessed
----	--	---	----	-----	-------	--	--------------	----------------

flush to grade 4" diameter wet location adjustable deeply regressed upright fixture with led lamp

Transformer: Remote (see schedule)

Requires: Finish: Natural Brass

This fixture type uses high efficacy lamps or sources.

1) All LED MR16 lamps shall be Brilliance LED rated for enclosed fixtures.

T#	SEBCO or KICHLER REMOTE 12V AND 24V FUSED MAGNETIC TRANSFORMERS	- - -		MLV	120v			Wall Mount
----	---	-------	--	-----	------	--	--	------------

[T1] 150w/12vAC - Sebco #1023-12 - type lu uplights

1) Refer to fixture schedule for part numbers. Refer to plans for locations.

### General Specification Notes

- 1) All recessed trims and/or trim rings shall be painted to match color of ceiling.
- 2) Electrical Contractor to determine fixture housing rating (IC, Non-IC or Remodel) unless otherwise noted.
- 3) No substitutions permitted without prior approval from Creative Designs in Lighting.



**CREATIVE DESIGNS  
IN LIGHTING**

**BENTLEY RENOVATION**

**Fixture Type:**

**EM**

wet location emergency wall sconce fixture

*Manufacturer:* HOLOPHANE

*Fixture Line:* Emergency Wall Sconce

*Fixture:* Cortez CZA9A

*Catalog #:* CZA9A-W-EXT

*Mounting:* Wall Mount

*Fixture Wattage:* 12w

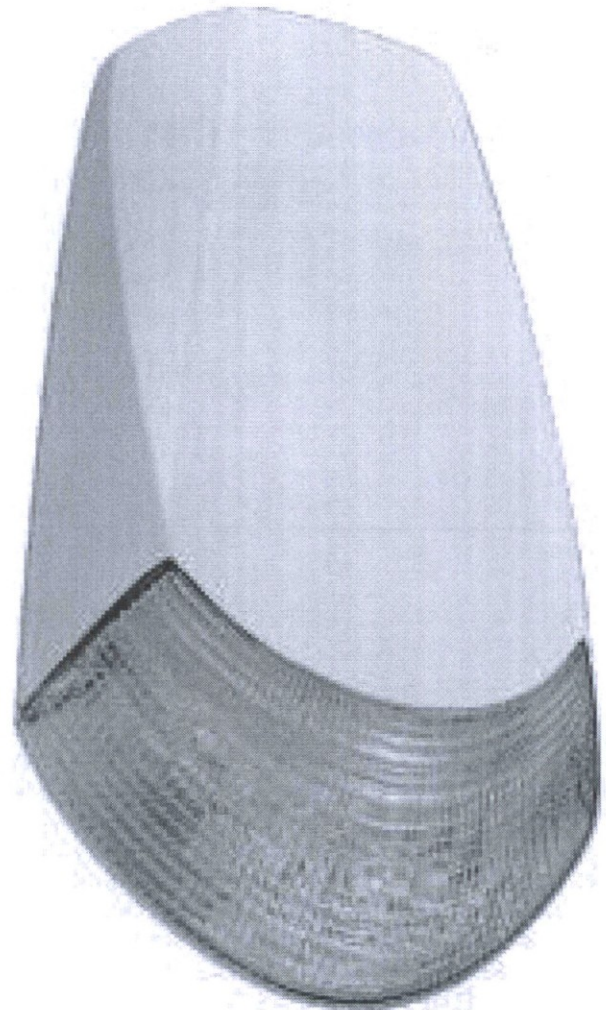
*Fixture Voltage:* 120v

*Load Type:* NON-DIM

*Lamp Spec:* (2) 6 WATT WEDGE-BASE XENON  
LAMPS (INCLUDED)

**General Specification Notes**

- 1) All recessed trims and/or trim rings shall be painted to match color of ceiling.
- 2) Electrical Contractor to determine fixture housing rating (IC, Non-IC or Remodel) unless otherwise noted.
- 3) No substitutions permitted without prior approval from Creative Designs in Lighting.





# CREATIVE DESIGNS IN LIGHTING

BENTLEY RENOVATION

Fixture Type:

EM



## FEATURES & SPECIFICATIONS

**INTENDED USE** — Provides a minimum of 90 minutes illumination for the rated wattage upon loss of AC power. Ideal for applications requiring low-profile, attractive emergency lighting.

**CONSTRUCTION** — Compact, low-profile, architectural design with die-cast aluminum housing. Available finishes are textured polyester powder coat paint in brushed nickel, white, black and dark bronze. All finishes can be painted in the field to match the wall color of choice.

U.S. Patent No. D468,046.

Patent-pending reflector/refractor design features superior vac-metalized, die-casted reflectors, and multi-faceted, highly transmissive refractor that significantly improve photometrics.

**OPTICS** — Standard optics provided with two 6W wedge-base xenon lamps offer 55 percent more light output than standard incandescent lamps.

Forward throw (FWD) option optics provided with two high-brightness white LEDs (10.8W total), projecting an NFPA-101 compliant path 3' wide and 28' forward, when mounted 8-1/2' AFF. The typical life of the LED lamp is 10 years.

All light sources meet requirements for NEC 700.16.

**ELECTRICAL** — Dual-voltage input capability (120/277V).

Current-limiting charger maximizes battery life and minimizes energy consumption. Provides low operating costs.

Short-circuit protection — current-limiting charger circuitry protects printed circuit board from shorts. Thermal protection senses circuitry temperature and adjusts charge current to prevent overheating and charger failure.

Thermal compensation adjusts charger output to provide optimum charge voltage relative to ambient temperature.

Regulated charge voltage maintains constant-charge voltage over a wide range of line voltages. Prevents over/undercharging that shortens battery life and reduces capacity.

Filtered charger input minimizes charge voltage ripple and extends battery life.

Edge connectors on printed circuit board ensure long-term durability.

Low-profile, integrated test switch/pilot light located below the lens.

Easily visible green status indicator.

Battery: Sealed, maintenance-free lead-acid (SLA) battery provides 12W rated capacity. Nickel-cadmium battery with Premium and Exterior option packages.

Automatic 48-hour recharge after a 90-minute discharge.

Low-voltage disconnect prevents excessively deep discharge that can permanently damage the battery.

Single-circuit battery connection.

AC/LVD reset allows battery connection before AC power is applied and prevents battery damage from deep discharge.

Brownout protection is automatically switched to emergency mode when supply voltage drops below 80 percent of nominal.

EXT option package includes 20-minute time delay for supplemental lighting during HID startup.

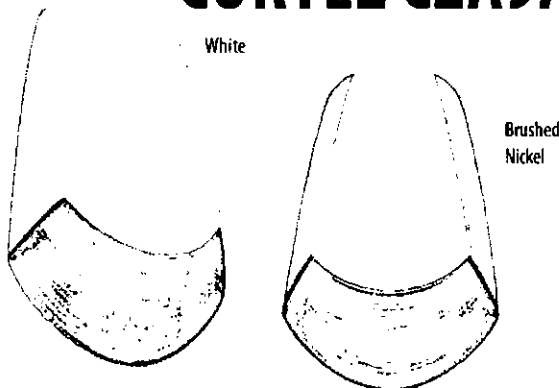
Single multi-chromatic LED indicator to display two-state charging, test activation and three-state diagnostic status.

Test switch provides manual activation of 30-second diagnostic testing for on-demand visual inspection.

Catalog Number
Notes
Type

Die-Cast Architectural Emergency Light

## CORTEZ CZA9A



### Self-diagnostics (PREM and EXT option packages)

Patented Electronics - U.S. Patent No. D468,046 and 6,502,044.

Self-diagnostic testing for five minutes every 30 days and 30 minutes every six months.

Diagnostic evaluation of lamp, AC to DC transfer, charging and battery condition. Continuously monitors AC functionality.

Postpone automatic test initiates eight hour delay of an automatic test by activating the manual test switch.

**INSTALLATION** — Back mount only. Universal J-box mounting pattern.

Rigid conduit entry provision on top of the unit.

**LISTINGS** — UL Listed. Wet locations and cold temperature (EXT) listed. Damp location (PREM) listed. Wet location (WL) option available with PREM package. Meets UL 924, NFPA 101, NFPA 70-NEC and OSHA illumination standards. UL labeled.

**WARRANTY** — 3-year limited warranty. (Battery is prorated.) Complete warranty terms located at [www.aquitybrands.com/CustomerResources/Terms\\_and\\_conditions.aspx](http://www.aquitybrands.com/CustomerResources/Terms_and_conditions.aspx).

Actual performance may differ as a result of end-user environment and application.

All values are design or typical values, measured under laboratory conditions at 25 °C.

Note. Specifications subject to change without notice.

### ORDERING INFORMATION

For shortest lead times, configure product using **bolded options**.

Example: CZA9A W EXT

CZA9A			
Series	Finish	Options	
<b>CZA9A</b> Die-cast architectural emergency lighting	<b>W</b> White	(blank)	Features lead calcium battery
	<b>B</b> Black	<b>PREM</b>	Features ni-cad battery, self-diagnostics and damp location 32°F to 122°F (0°C to 50°C)
	<b>BN</b> Brushed nickel	<b>EXT</b>	Features high-temperature ni-cad battery listed from 0°F to 122°F (-18°C to 50°C), self-diagnostics, time delay; listed for cold weather, damp and wet location
	<b>DB</b> Dark bronze	<b>FWD</b>	Forward throw optics with LED light source, 10.8W
		<b>WL</b>	Wet location with time delay listed from 32°F to 122°F (0°C to 50°C) <sup>1</sup>

#### Notes

<sup>1</sup> WL only available with PREM option package.





## Cortez CZA9A Die-Cast Architectural Emergency Light

### SPECIFICATIONS

ELECTRICAL: Primary Circuit					
Type	AC Input			Output volts	Watts output 1-1/2 hrs.
	Volts	Amps	Watts		
CZA9A	120	.11	1.1	6	12
	277	.12	1.3		
CZA9A PREM	120	.15	1.4	6	12
	277	.14	1.4		
CZA9A EXT	120	.23	2.1	6	12
	277	.25	3.5		

BATTERY: Sealed Lead-Acid (SLA)				
Voltage	Shelf life <sup>2</sup>	Typical life <sup>4</sup>	Maintenance <sup>4</sup>	Optimum temperature <sup>4</sup>
6	12 months	3 - 5 years	none	60° - 90°F (16° - 32°C)

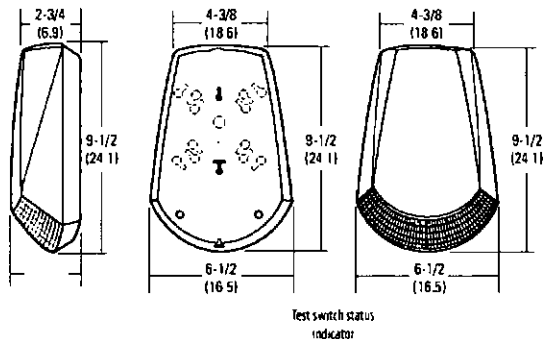
BATTERY: Nickel-Cadmium				
Voltage	Shelf life <sup>2</sup>	Typical life <sup>4</sup>	Maintenance <sup>4</sup>	Optimum temperature <sup>4</sup>
6	3 years	7 - 9 years	none	32° - 122°F (0° - 50°C)

#### Notes

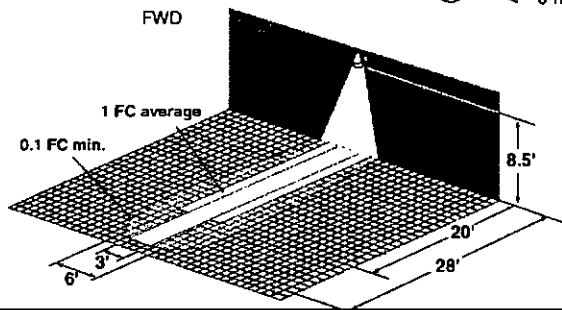
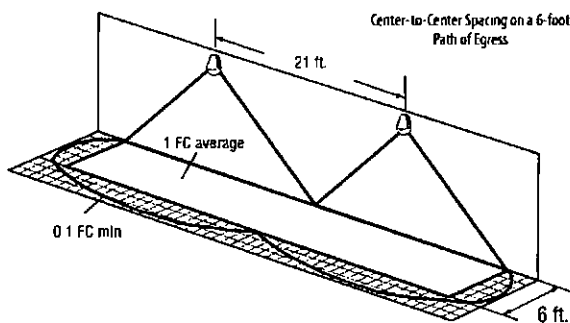
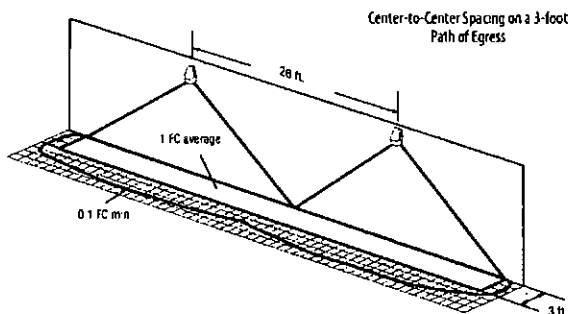
- EXT provided with battery heater
- At 77°F (25°C).
- Optimum ambient temperature range where unit will provide capacity for 90 minutes. Higher and lower temperatures affect life and capacity. See option packages for expanded temperature ranges.
- All life safety equipment, including emergency lighting for path of egress must be maintained, serviced, and tested in accordance with all National Fire Protection Association (NFPA) and local codes. Failure to perform the required maintenance, service, or testing could jeopardize the safety of occupants and will void all warranties.

### MOUNTING

All dimensions are inches (centimeters)  
Shipping weight 3.5 lbs. (1.59 kgs)



### FIXTURE PERFORMANCE



### SPACING GUIDE

Xenon Lamp	Path of Egress 3'-wide	Path of Egress 6'-wide
Center-to-Center Spacing	26'	21'

NOTE: Meets Life Safety Code standard minimum illuminance of 0.1 FC and average illuminance of 1.0 FC. Assumes open space with no obstructions, mounting height 8.5', ceiling height 9', and reflectances .80/50/20.





1 foot linear wet location fixture with 30x60 degree optic and single side glare shield

*Manufacturer:* ACCLAIM

*Fixture Line:* LinearOne

*Fixture:* Exterior

*Catalog #:* LNEA-COLD-OPTQ / LNFC10 / LNEGS1

*Mounting:* Surface Mount

*Accessories:* Glare Shield

*Driver* Integral

*Fixture Wattage:* 12w

*Fixture Voltage:* 120v

*Load Type:* 0-10vDC

*Lamp Spec:* LED: 3500K | 80+CRI  
(INTEGRAL TO FIXTURE)

#### Fixture Specification Notes

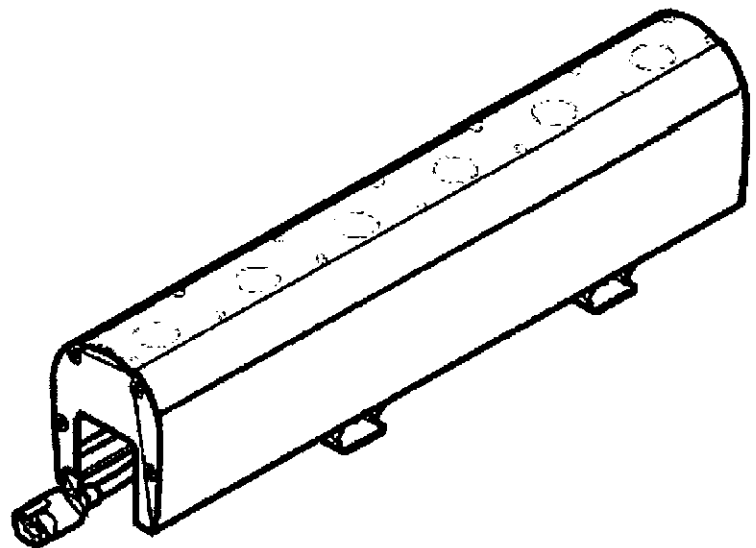
1) 0-10vDC dimming requires BOTH (1) #12-2 high voltage and (1) #16-2 low voltage wires.

#### General Specification Notes

1) All recessed trims and/or trim rings shall be painted to match color of ceiling.

2) Electrical Contractor to determine fixture housing rating (IC, Non-IC or Remodel) unless otherwise noted.

3) No substitutions permitted without prior approval from Creative Designs in Lighting.

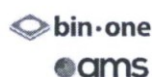
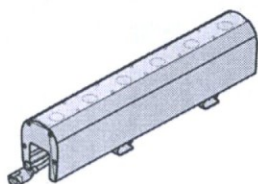




## LINEAR ONE<sup>™</sup>

EXTERIOR

## ACCLAIM LIGHTING



Client:

Project:

Type:

Order Code:

Quantity:

With **Linear One**, we set out to produce a series that works with your vision instead of crowding it. Acclaim Lighting continually strives for simple goals during the design process: be useful, stay out of the way, and function wonderfully. Creativity begins with great design and Linear One is streamlined to work for you. We meticulously craft linear lights that install with no visible cables and create the clutter-free space your work deserves. This means that subtlety enhances your aesthetic as Linear One remains hidden while serving as the powerhouse behind your visual creation. Refined to work with your creativity, Linear One provides end-to-end modular functionality that adapts to your needs and never works against them. Acclaim Lighting is motivated by the passion of its users and strives to produce the very best solutions in architectural lighting. We create beautiful products that work for creativity.

## SPECIFICATIONS

Colors	2700K, 3000K, 3500K, 4000K (80 CRI or 90 CRI available), Red, Green, Blue, Amber
Beam Angles	10° x 10°, 30° x 30°, 60° x 60°, 100° x 100°, 10° x 25°, 10° x 40°, 10° x 70°, 30° x 60°, 40° x 70° Asymmetric (60° x 60° + 20° tilt), Batwing (split 10° x 40° or 40° x 70°)
Housing Lengths	1' (304.8mm), 4' (1219.2mm)
Control	0-100% dimming via internal 0-10V driver, DMX via optional UDM, wireless via optional Aria
Max Fixtures in Series	80' (24m)
Power Consumption	1': 12W, 4': 48W
Operating Voltage	100-277VAC, 50/60 Hz
Lumen Maintenance	L70 @ 150,000 hours (25° C)
Mounting	90° mounting bracket included, flat mounting bracket optional
Finish	Silver / finished aluminum, marine environment capability standard
Material	Aluminum body, polycarbonate lens
Ambient Operating Temperature	-40° F to 131° F (-40° C to 55° C)
IP Rating	IP66, wet location - marine environment housing standard
IK Rating	IK10, protection against 5 joule impact (40cm distance)
Fixture Connectors	IP66 End to end multi-pin connection cables included
Warranty	5 Years, limited
Weight	1': 2.4 lbs, 4': 9.7 lbs
Dimensions	L: 12" / 48" W: 2.12" H: 3.39" (L: 305 / 1220 W: 54 H: 86.2mm)
Certifications	





# LINEAR ONE<sup>®</sup>

EXTERIOR

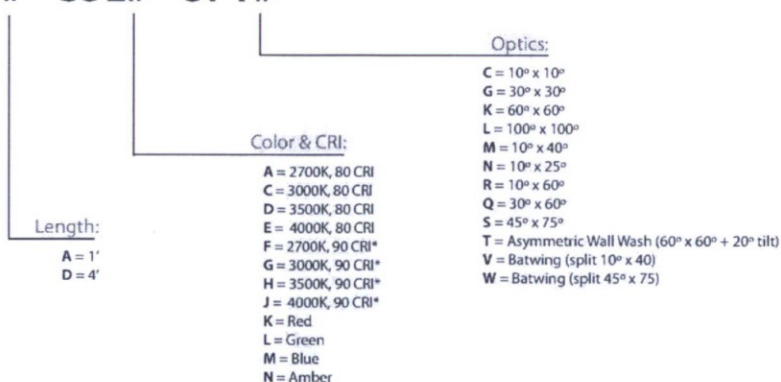
# ACCLAIM<sup>®</sup>

LIGHTING

## ORDER CODES

\* indicates special order

### LNE# - COL# - OPT#



## RELATED COMPONENTS

### Feed Cables



#### LNFC10

10' Feed Cable for Linear One Exterior  
Multi-pin connector to bare wire AC + 0-10V

#### LNFC50

50' Feed Cable for Linear One Exterior  
Multi-pin connector to bare wire AC + 0-10V

### Link Cables



#### LNLC0

6" Link Cable for Linear One Exterior  
Multi-pin connector to multi-pin connector, use for curved runs

#### LNLC1

1' Link Cable for Linear One Exterior  
Multi-pin connector to multi-pin connector

#### LNLC5

5' Link Cable for Linear One Exterior  
Multi-pin connector to multi-pin connector

#### LNLC10

10' Link Cable for Linear One Exterior  
Multi-pin connector to multi-pin connector



LINEAR ONE<sup>®</sup>  
EXTERIOR

ACCLAIM  
LIGHTING

RELATED COMPONENTS

Optional Mounting Accessories



**LNMT1**

*1' mounting track for Linear One*

Aluminum profile, screws not included

**LNMT4**

*4' mounting track for Linear One*

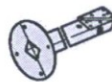
Aluminum profile, screws not included



**LNFMB**

*Flat Mounting Bracket for Linear One*

2 pcs required per fixture, factory fitted option



**LNEB1**

*1' extender bar for Linear One*

Aluminum body, screws not included

**LNEB2**

*2' extender bar for Linear One*

Aluminum body, screws not included

**LNEB3**

*3' extender bar for Linear One*

Aluminum body, screws not included

Optional Beam Accessories



**LNEGS1**

*1' single sided glare shield for Linear One Exterior*

**LNEGS4**

*4' single sided glare shield for Linear One Exterior*



**LNELV1**

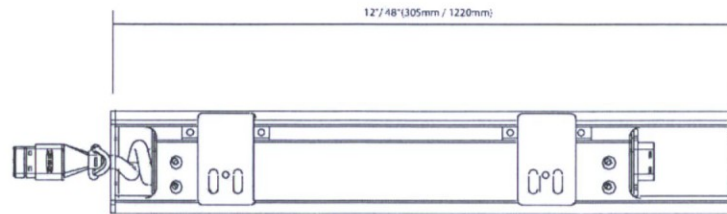
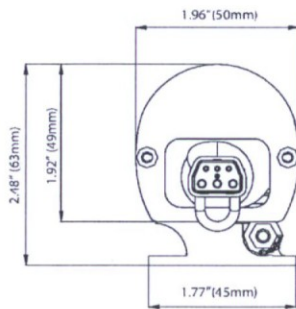
*1' full louver for Linear One Exterior (use 4 pcs. for 4' fixture)*



## LINEAR ONE<sup>™</sup> EXTERIOR

ACCLAIM  
LIGHTING

### DIMENSIONS



### PHOTOMETRICS

80 CRI Versions, 10° x 10°, 1'

Color	Lumens(per foot)	Max Candela	Efficacy (l/pw)	CRI	TM30
2700K	739	5643	63	81.1	81.2
3000K	788	6291	67	82.8	81.3
3500K	772	5897	66	84.3	82.6
4000K	770	5790	65	85.4	83.2

90 CRI Versions, 10° x 10°, 1'

Color	Lumens(per foot)	Max Candela	Efficacy (l/pw)	CRI	TM30
2700K	574	4577	49	90.6	93
3000K	544	3844	47	93	89.2
3500K	569	4012	48	93.8	88.7
4000K	579	4703	48	90.1	90





flush to grade 4" diameter wet location adjustable deeply regressed uplight fixture with led lamp

*Manufacturer:* LUMIERE

*Fixture Line:* Uplight

*Fixture:* Round

*Catalog #:* 613-50MR16-12-NBR / LBB / LVR

*Mounting:* Floor Recessed

*Accessories:* Glare Louver

*Transformer* Remote (see schedule)

*Addl.* Finish: Natural Brass

*Requirements:*

*Lamp Spec:* MR16-4-2700-30  
(Brilliance LED MR16)

*Fixture Wattage:* 4w

*Fixture Voltage:* 12vAC

*Load Type:* MLV

#### Fixture Specification Notes

1) All LED MR16 lamps shall be Brilliance LED rated for enclosed fixtures.

#### General Specification Notes

1) All recessed trims and/or trim rings shall be painted to match color of ceiling.

2) Electrical Contractor to determine fixture housing rating (IC, Non-IC or Remodel) unless otherwise noted.

3) No substitutions permitted without prior approval from Creative Designs in Lighting.





## LUMIÈRE®

### DESCRIPTION

The Boca 613 is a tiny 4-1/2" diameter inground fixture for use with a low voltage MR16 lamp. The adjustable lamp assembly provides up to 22° vertical tilt and 360° horizontal rotation for precision uplighting, wall washing or general illumination in constricted areas. Designed for recess mounting in concrete, brick, stone or dirt it is suitable drive-over applications.

### SPECIFICATION FEATURES

#### A ... Material

Recessed housing is constructed from corrosion-resistant stainless steel. Trim ring is precision-machined from corrosion-resistant 6061-T6 aluminum, solid brass or solid bronze.

#### B ... Finish Painted

Solid brass and stainless steel parts are natural finish. Painted surfaces are double protected by a chromate conversion undercoating and a thermoplastic polyester powder coat for mar-resistance and extended weatherability.

#### C ... Gasket

Recessed housing and trim ring are sealed with a high temperature silicone o-ring gasket to prevent water intrusion.

#### D ... Lens

Minimum 1/4" thick tempered glass lens, factory sealed with high temperature adhesive to prevent water intrusion and breakage due to thermal shock. Suitable for drive-over applications.

#### E ... Hardware

Stainless steel hardware is standard to provide maximum corrosion-resistance.

#### F ... Socket

Ceramic socket with 250° C Teflon® coated lead wires and GU5.3 bi-pin base.

#### G ... Electrical

Remote 12V transformer required (not included). Available from Lumière as an accessory - see the Accessories & Technical Data section of this catalog for details. Bottom of fixture includes two 1/2-14 NPSM brass female conduit fittings for through wiring. Fixture also includes built-in wiring compartment.

#### H ... Thermal Cutoff Protection (Optional)

Fixture is suitable for recessed mounting in indoor or outdoor wood flooring (non-IC) when equipped with option T (changes UL/cUL wet label to damp label), and down-wattled to 35W (max.), and connected with 150° C (min.) supply wire. Fixture is not suitable for inground or concrete pour applications when equipped with option T.

#### I ... Lamp

Not included. Available from Lumière as an accessory - see reverse side of this page.

#### J ... Labels & Approvals

UL and cUL listed, standard wet label. Fixtures equipped with option T (thermal cutoff protection) are UL/cUL listed, damp label. Manufactured to ISO 9001-2000 Quality Systems Standard. IBEW union made.

#### K ... Warranty

Lumière warrants its fixtures against defects in materials & workmanship for three (3) years. Auxiliary equipment such as transformers, ballasts and lamps carry the original manufacturer's warranty.

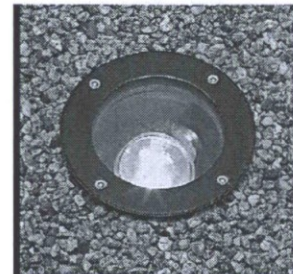
#### L ... Recessed Housing

Recessed housing is available to ship in advance of complete fixture for rough-in purposes. Specify option -LBB and order separately accompanying recessed housing from below:

613-xx-BB  
recessed housing;

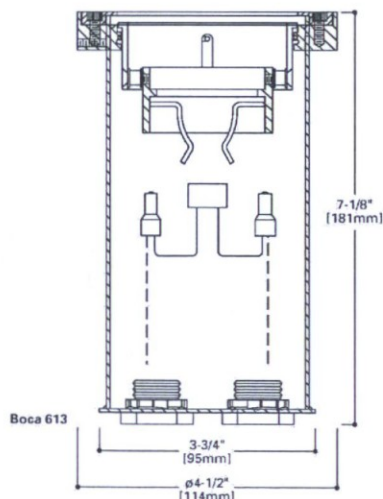
613-xx-T-BB  
recessed housing w/T option;

NOTE: replace xx with desired finish- BK, BZ, CS, VE, WT, NBR, or NBZ



BOCA  
613

50W (max.) MR16  
Halogen  
Low Voltage  
Inground



Specifications and Dimensions subject to change without notice.  
Consult your representative for additional options and finishes.





# CREATIVE DESIGNS IN LIGHTING

## BENTLEY RENOVATION

Fixture Type:

LU

### PHOTOMETRIC DATA

BOCA 613

**Boca 613**  
Lamp=50MR16/NSP  
(EXT)  
CBCP=11,000

#### Cone of Light

Distance to Illuminated Plane	Initial Nadir Footcandles	Beam Diameter
15'0"	45	4'0"
10'0"	102	3'0"
8'0"	159	2'0"
6'0"	283	1'6"
4'0"	638	1'0"
2'0"	2550	0'6"

Lamp Wattage Multiplier  
20W x 0.32



**Boca 613**  
Lamp=50MR16/NFL  
(EXZ)  
CBCP=3200

#### Cone of Light

Distance to Illuminated Plane	Initial Nadir Footcandles	Beam Diameter
15'0"	13	10'0"
10'0"	29	6'6"
8'0"	45	5'0"
6'0"	81	4'0"
4'0"	181	2'6"
2'0"	725	1'0"



**Boca 613**  
Lamp=50MR16/FL  
(EXN)  
CBCP=2000

#### Cone of Light

Distance to Illuminated Plane	Initial Nadir Footcandles	Beam Diameter
15'0"	7	12'0"
10'0"	17	8'0"
8'0"	27	6'6"
6'0"	48	5'0"
4'0"	106	3'0"
2'0"	431	1'6"

Lamp Wattage Multiplier  
20W x 0.30  
35W x 0.57



**Boca 613**  
Lamp=50MR16/WFL  
(FNV)  
CBCP=1200

#### Cone of Light

Distance to Illuminated Plane	Initial Nadir Footcandles	Beam Diameter
15'0"	5	17'0"
10'0"	11	11'6"
8'0"	17	9'0"
6'0"	30	7'0"
4'0"	67	4'6"
2'0"	269	2'0"



### LAMP INFORMATION

Lamp	ANSI Code	Watts	Beam Spread	CBCP	°K	Life (hrs.)	Base	Volts
50MR16/NSP	EXT	50	12°	11,000	3050	4000	GU5.3 bi-pin	12
50MR16/NFL	EXZ	50	25°	3200	3050	4000	GU5.3 bi-pin	12
50MR16/FL	EXN	50	40°	2000	3050	4000	GU5.3 bi-pin	12
50MR16/WFL	FNV	50	60°	1200	3050	4000	GU5.3 bi-pin	12
35MR16/SP	FRA	35	20°	3900	3000	4000	GU5.3 bi-pin	12
35MR16/FL	FMW	35	40°	1000	3000	4000	GU5.3 bi-pin	12

NOTE: Inferior quality lamps may adversely affect the performance of this product. Use only name brand lamps from reputable lamp manufacturers.

### NOTES AND FORMULAS

- Beam diameter is to 50% of maximum footcandles, rounded to the nearest half-foot.
- Footcandle values are initial. Apply appropriate light loss factors where necessary.
- Bare lamp data shown. Consult lamp manufacturers to obtain detailed specifications for their lamps.

### ORDERING INFORMATION

Series	613=4-1/2" Dia Adjustable 22° Vertical Tilt 360° Horizontal Rotation Boca Ingrand
Source	Halogen 35MR16=35W Max Halogen 1 MR16, GU5.3 Base 50MR16=50W Max Halogen MR16, GU5.3 Base
Voltage	12=12V
Options	T=Thermally rated for use in non-4C 2 wood flooring (changes UL/cUL wet label to damp label) LBB=Housing Shipped in Advance (select LBB option and order -BB Back Box Recessed Housing separately) Recessed Housing (order separately) Select housing from Recessed Housing section on previous page
Accessories	Filters F71=Peach Dichroic Filter, 2.00" Dia F73=Green Dichroic Filter, 2.00" Dia F75=Yellow Dichroic Filter, 2.00" Dia F77=Dark Blue Dichroic Filter, 2.00" Dia F79=Neutral Density Dichroic Filter, 2.00" Dia F22=Red Color Filter, 2.00" Dia F44=Green Color Filter, 2.00" Dia F66=Mercury Vapor Color Filter, 2.00" Dia Optical Lenses LSL: Linear Spread Lens (elongate standard beam spread), 2.00" Dia DIF: Diffused Lens (provide even illumination), 2.00" Dia Optical Louver LVR: Hex Cell Louver (reduce glare), 2.00" Dia Lamps EZX: 20W MR16 GU5.3 Bi-Pin Very Narrow Spot RAB: 20W MR16 GU5.3 Bi-Pin Flood FRA: 35W MR16 GU5.3 Bi-Pin Spot F72=Amber Dichroic Filter, 2.00" Dia F74=Medium Blue Dichroic Filter, 2.00" Dia F76=Red Dichroic Filter, 2.00" Dia F78=Light Blue Dichroic Filter, 2.00" Dia F80=Magenta Dichroic Filter, 2.00" Dia F33=Blue Color Filter, 2.00" Dia F55=Yellow Color Filter, 2.00" Dia OSL: Overall Spread Lens (increase beam spread), 2.00" Dia ESX: 20W MR16 GU5.3 Bi-Pin Narrow Spot FRB: 35W MR16 GU5.3 Bi-Pin Narrow Spot FMW: 35W MR16 GU5.3 Bi-Pin Flood

**Series**  
613=4-1/2" Dia Adjustable 22° Vertical Tilt 360° Horizontal Rotation Boca Ingrand

**Source**  
Halogen  
35MR16=35W Max Halogen 1 MR16, GU5.3 Base  
50MR16=50W Max Halogen MR16, GU5.3 Base

**Voltage**  
12=12V

**Finish**  
BK=Black  
BZ=Bronze  
CS=City Silver  
VE=Verde  
WT=White  
Metal  
NBR= Brass  
NBZ= Bronze

**Options**  
T=Thermally rated for use in non-4C 2 wood flooring (changes UL/cUL wet label to damp label)  
LBB=Housing Shipped in Advance (select LBB option and order -BB Back Box Recessed Housing separately)  
**Recessed Housing (order separately)**  
Select housing from Recessed Housing section on previous page

**Accessories**  
**Filters**  
F71=Peach Dichroic Filter, 2.00" Dia  
F73=Green Dichroic Filter, 2.00" Dia  
F75=Yellow Dichroic Filter, 2.00" Dia  
F77=Dark Blue Dichroic Filter, 2.00" Dia  
F79=Neutral Density Dichroic Filter, 2.00" Dia  
F22=Red Color Filter, 2.00" Dia  
F44=Green Color Filter, 2.00" Dia  
F66=Mercury Vapor Color Filter, 2.00" Dia  
**Optical Lenses**  
LSL: Linear Spread Lens (elongate standard beam spread), 2.00" Dia  
DIF: Diffused Lens (provide even illumination), 2.00" Dia  
**Optical Louver**  
LVR: Hex Cell Louver (reduce glare), 2.00" Dia  
**Lamps**  
EZX: 20W MR16 GU5.3 Bi-Pin Very Narrow Spot  
RAB: 20W MR16 GU5.3 Bi-Pin Flood  
FRA: 35W MR16 GU5.3 Bi-Pin Spot  
F72=Amber Dichroic Filter, 2.00" Dia  
F74=Medium Blue Dichroic Filter, 2.00" Dia  
F76=Red Dichroic Filter, 2.00" Dia  
F78=Light Blue Dichroic Filter, 2.00" Dia  
F80=Magenta Dichroic Filter, 2.00" Dia  
F33=Blue Color Filter, 2.00" Dia  
F55=Yellow Color Filter, 2.00" Dia  
OSL: Overall Spread Lens (increase beam spread), 2.00" Dia  
ESX: 20W MR16 GU5.3 Bi-Pin Narrow Spot  
FRB: 35W MR16 GU5.3 Bi-Pin Narrow Spot  
FMW: 35W MR16 GU5.3 Bi-Pin Flood

- Notes: 1 Use with T Option.  
2 Available with 35MR16 Source (35W maximum) only.  
• Lamp not included.  
• 12V remote transformer required - not included.  
• See ACCESSORIES & TECHNICAL DATA section of the Lumière catalog for Low Voltage Cable & Transformers.  
• Consult your Cooper Lighting representative for additional options and finishes.



**CREATIVE DESIGNS  
IN LIGHTING**

**BENTLEY RENOVATION**

**Fixture Type:**

**T#**

*Manufacturer:* SEBCO or KICHLER

*Fixture Line:* Remote Transformers

*Fixture:* Magnetic Transformers

*Catalog #:* REMOTE 12V AND 24V FUSED MAGNETIC TRANSFORMERS

*Mounting:* Wall Mount

*Fixture Voltage:* 120v

*Load Type:* MLV

*Lamp Spec:* - - -

**Fixture Specification Notes**

- 1) Refer to fixture schedule for part numbers.  
Refer to plans for locations.

**General Specification Notes**

- 1) All recessed trims and/or trim rings shall be painted to match color of ceiling.
- 2) Electrical Contractor to determine fixture housing rating (IC, Non-IC or Remodel) unless otherwise noted.
- 3) No substitutions permitted without prior approval from Creative Designs in Lighting.

**Description:**

[T1] 150w/12vAC - Sebco #1023-12 - type lu uplights





**CREATIVE DESIGNS  
IN LIGHTING**

**BENTLEY RENOVATION**

**Fixture Type:**

**T#**

**SEBCO**

THE INDUSTRY'S PREMIER LOW VOLTAGE LIGHTING TRANSFORMER



## FEATURES

- 10 YEAR FREE REPLACEMENT WARRANTY
- FULLY DIMMABLE, WITH LOW-VOLTAGE MAGNETIC DIMMER
- 1/8" STEEL, POWDER COATED NEMA 3R CASE
- STANDARD WITH MANDATORY SECONDARY PROTECTION
- AVAILABLE WITH PRIMARY LINE CORD.
- BUILT IN THE USA TO THE HIGHEST STANDARDS

## MAGNETIC

## REQUIREMENTS

- MEETS OR EXCEEDS ALL UL, CUL, ANSI/UL, CSA AND CE REQUIREMENTS
- LISTED TO THE NEWEST UL STANDARDS 2108 AND 1838
- MANDATORY SECONDARY PROTECTION, AS STATED IN THE NATIONAL ELECTRIC CODE ARTICLE 411





CREATIVE DESIGNS  
IN LIGHTING

BENTLEY RENOVATION

Fixture Type:

T#

**SEBCO**

THE INDUSTRY'S PREMIER LOW VOLTAGE LIGHTING TRANSFORMER

## SPECIFICATIONS

PART NUMBER	PRIMARY VOLTAGE	OUTPUT VOLTAGE	BREAKERS	FREQUENCY	DIMENSIONS	WEIGHT
-------------	-----------------	----------------	----------	-----------	------------	--------

### 100 Watt

#### CLASS 1

1022-12	120VAC-1A MAX	12VAC-8.33A MAX	1x10 A	60 Hz	6.75" x 5" x 4.75"	10 LBS.
1022-24	120VAC-1A MAX	24VAC-4.16A	1x5 A	60 Hz	6.75" x 5" x 4.75"	10 LBS.

### 150 Watt

#### CLASS 1

1023-12	120VAC-1A MAX	12VAC-8.33A MAX	1x15 A	60 Hz	6.75" x 5" x 4.75"	10 LBS.
1023-24	120VAC-1A MAX	24VAC-4.16A	1x5 A	60 Hz	6.75" x 5" x 4.75"	10 LBS.

### 250 Watt

#### CLASS 1

1024-12	120VAC-1A MAX	12VAC-8.33A MAX	1x25 A	60 Hz	6.75" x 5" x 4.75"	13 LBS.
1024-24	120VAC-1A MAX	24VAC-4.16A	1x12 A	60 Hz	6.75" x 5" x 4.75"	13 LBS.

### 500 Watt

#### CLASS 1

1025-12	120VAC-4.6 MAX	12VAC-2x25A MAX	2x25 A	60 Hz	8.25" x 5.25" x 5.5"	19 LBS.
1025-24	120VAC-4.6 MAX	24VAC-2x10A MAX	1x25 A	60 Hz	8.25" x 5.25" x 5.5"	19 LBS.

### 750 Watt

#### CLASS 1

1026-12	120VAC-6.5A MAX	12VAC-3x25A MAX	3x25 A	60 Hz	8.25" x 5.85" x 4.5"	23 LBS.
1026-24	120VAC-6.5A MAX	24VAC-2x15A MAX	2x15 A	60 Hz	8.25" x 5.85" x 4.5"	23 LBS.

### 1000 Watt

#### CLASS 1

1027-12	120VAC-9.2A MAX	12VAC-4x25A MAX	4x25 A	60 Hz	10.25" x 5.5" x 5.75"	28 LBS.
1027-24	120VAC-9.2A MAX	24VAC-2x25A MAX	2x25 A	60 Hz	10.25" x 5.5" x 5.75"	28 LBS.



THESE DRAWINGS ARE NOT TO BE REPRODUCED OR USED FOR ANY OTHER CONSTRUCTION EXCEPT FOR THE NAME ON THESE DRAWINGS. ANY OTHER USE OF THESE PLANS SHALL BE WITH THE CONSENT OF THE DESIGNER. THE DESIGNER SHALL NOT BE ALTERED BY THE OWNER OR ANY OTHER PARTY WITHOUT WRITTEN AUTHORIZATION FROM THE DESIGNER. ANY ALTERATION TO THE PROJECT THAT WILL OCCUR DURING THE CONSTRUCTION PHASE WILL REQUIRE THE WRITTEN APPROVAL OF CHEN + SUCHART STUDIO © copyright 2019

NOT FOR CONSTRUCTION

**BENTLEY RENOVATION**

4163 north marshall way  
scottsdale, arizona 85251

architect:  
**CHEN+SUCHART STUDIO**  
7070 east third avenue  
scottsdale, arizona 85251  
mobile : 480.332.1704 (tommy)  
mobile : 480.332.1706 (petricia)  
email : thamt1@chensuchartstudio.com



22-DR-2019  
4/30/2019

context aerial  
site improvements  
scale : 1/32" = 1'-0"  
**DRB CONTEXT**  
design review board submittal  
30 march 2019  
north



**SURVEY NOTES**

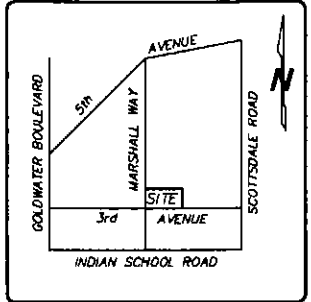
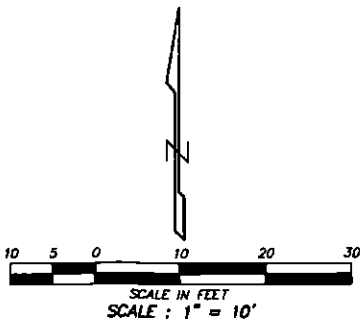
1. This survey and the description used are based on a Commitment for Title Insurance issued by Southwest Title Agency, LLC, issuing agent for Old Republic National Title Insurance Company, Order Number 00107177-099-JR, dated November 16, 2018.
2. BASIS OF BEARING: The monument line of Marshall Way, using a bearing of North 00 degrees 57 minutes 00 seconds East, per the Plat of HURLEY TRACT, recorded in Book 62, Page 35, M.C.R.
3. The bearings and distances depicted indicate actual field or computed measurements performed during the course of this survey. This information may vary from documents of record used for this survey.
4. The building square footage shown is based on exterior measurements of the building footprint at ground level and is not intended to reflect the interior or leaseable area of any building. The building footprint and dimensions depict the general configuration of the building(s).
5. The utility information shown is limited to visible above ground evidence. This survey makes no attempt to depict any underground utilities and there is no guarantee or warranty to the exact location or presence of any underground utilities that may actually exist adjacent to or within the boundaries of the subject property. Prior to any excavation please call an underground utility locator or "BLUE STAKE" at (602)263-1100 for the precise location and extent of all utilities in the area.
6. This Survey has been prepared exclusively for the parties stated in the certification for use in conjunction with the escrow referenced in Survey Note No. 1. Reproduction or use of this survey by any other party for any other transaction or purpose is unauthorized without written authorization from Alliance Land Surveying, LLC. The use of the word "certify" or "certification" by a person or firm that is registered or certified by the board is an expression of professional opinion regarding facts or findings that are the subject of the certification and does not constitute an express or implied warranty or guarantee (A.R.S. 32-151).

MONUMENT TABLE	
①	FND BRASS CAP FLUSH L.S. 15865
②	FND BRASS CAP FLUSH
③	CALC'D POSITION PER (R) - ALSO FND PK NAIL IN SHINER, N 89°59'18" W, 0.38' AS SHOWN ON (R3, R4 & R6)
④	FND 1/2" REBAR W/CAP L.S. 21085 AS SHOWN ON (R3)
⑤	SET PK NAIL & WASHER L.S. 31020
⑥	SET 1/2" REBAR W/CAP L.S. 31020
⑦	PROPERTY CORNER NOT PRACTICAL TO SET - LANDS BETWEEN BUILDINGS - FND COTTON PICKER SPINDLE W/TAG L.S. 21085, EAST, 40.01' AT THE NE COR LOT 18, (R) AS SHOWN ON (R3)
⑧	NE COR LOT 18, (R) - FND COTTON PICKER SPINDLE W/TAG L.S. 21085 AS SHOWN ON (R3)

LINE	BEARING	DISTANCE
L1	N 89°59'18" W	97.98'
L2(R)	N 00°57'00" E	42.31'
L2(M)	N 00°57'00" E	42.32'
L3	S 89°59'05" E	109.87'
L4	S 00°56'14" W	54.31'
L5	S 89°59'05" E	40.01'
L6	S 89°59'05" E	6.00'
L7	N 89°59'05" W	40.01'
L8	S 00°56'14" W	40.01'

**ALTA / N.S.P.S. LAND TITLE SURVEY**  
**A PORTION OF THE SOUTHEAST QUARTER OF SECTION 22, TOWNSHIP 2 NORTH, RANGE 4 EAST OF THE GILA AND SALT RIVER BASE AND MERIDIAN, MARICOPA COUNTY, ARIZONA.**

CURVE	RADIUS	ARC LENGTH	DELTA ANGLE	CHORD BEARING	CHORD LENGTH
C1	91.89'	58.95'	36°45'27"	S 71°35'11" W	57.95'
C2	91.89'	58.95'	36°45'27"	N 71°35'11" E	57.95'
C3	11.81'	18.74'	90°56'18"	N 44°31'09" W	16.83'



**VICINITY MAP**  
NOT TO SCALE

**PARCEL DESCRIPTION**

Lot 18, HURLEY TRACT, according to Book 62 of Maps, Page 35, records of Maricopa County, Arizona.  
EXCEPT the East 40 feet thereof.

**REFERENCE DOCUMENTS**

- (R) PLAT PER BOOK 62, PAGE 35, M.C.R.  
(R1) PLAT PER BOOK 62, PAGE 23, M.C.R.  
(R2) R.O.S. PER BOOK 654, PAGE 14, M.C.R.  
(R3) R.O.S. PER BOOK 1139, PAGE 1, M.C.R.  
(R4) R.O.S. PER BOOK 1307, PAGE 50, M.C.R.  
(R5) DOC. NO. 2000-091462, M.C.R.  
(R6) R.O.S. PER BOOK 1417, PAGE 2, M.C.R.

**SCHEDULE 'B' ITEMS**

- ⑩ Easements, restrictions, reservations, conditions, set-back lines and all other matters as set forth on the plat recorded in Book 62 of Maps, page 35, but deleting any covenant, condition or restriction indicating a preference, limitation or discrimination based on race, color, religion, sex, handicap, familial status or national origin and thereafter modified by instrument recorded in Document No. 2018-0487105 and rerecorded in Document No. 2018-0504704.  
(PLOTTABLE MATTERS SHOWN HEREON - THE 20' PARKING EASEMENT SHOWN ON PLAT BK. 62, PG. 35, M.C.R. HAS BEEN RELEASED PER DOC. NO. 2018-0604704, M.C.R.)
- ⑪ Resolution No. 4698 of the Council of the City of Scottsdale declaring its intention to form the City of Scottsdale Downtown Enhanced Municipal Services Improvement District No. 17901 recorded in Document No. 97-086152.  
(AFFECTS SUBJECT PROPERTY - NOT PLOTTABLE)
- ⑫ Resolution No. 6060 of the Council of the City of Scottsdale declaring its intention to form the City of Scottsdale Downtown Enhanced Municipal Services Improvement District No. 2 recorded in Document No. 2002-536464.  
(AFFECTS SUBJECT PROPERTY - NOT PLOTTABLE)

**SITE INFORMATION**

ADDRESS: 4181 N. MARSHALL WAY, SCOTTSDALE, ARIZONA  
A.P.N.: 173-50-050C  
LAND AREA:  
0.136 ACRES - 5,941 SQ. FT.  
STRIPED PARKING SPACE TABULATION:  
There are no striped parking spaces on the subject property.

**CERTIFICATION**

TO:  
M3 Commercial Real Estate, LLC; 5th & Marshall, LLC, An Arizona Limited Liability Company; Southwest Title Agency, LLC; Premier Title Agency; and Old Republic National Title Insurance Company.

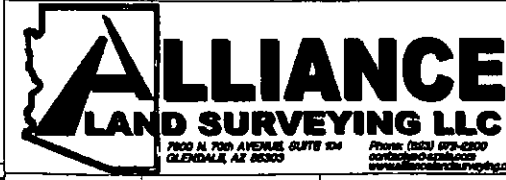
This is to certify that this map or plat and the survey on which it is based were made in accordance with the 2016 Minimum Standard Detail Requirements for ALTA/NPS Land Title Surveys, jointly established and adopted by ALTA and NPS, and includes Items 1, 2, 4, 7(a), 7(b)(1), 7(c), 8, 9, 13, and 14 of Table A thereof. The fieldwork was completed on January 18, 2019.

January 21, 2019  
G. Bryan Goetzlberger  
R.L.S. 31020

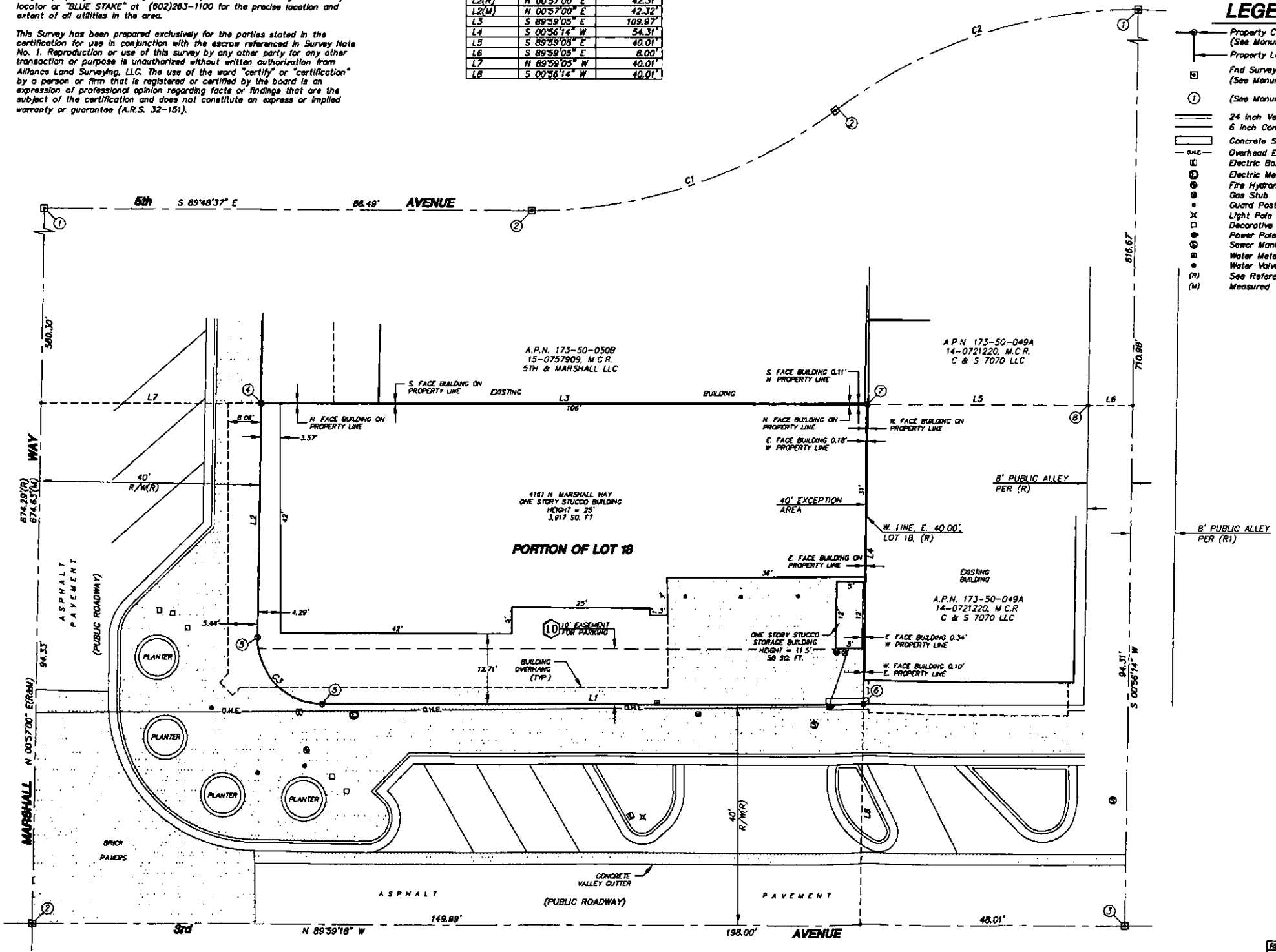


**22-DR-2019**  
**4/30/2019**

ALTA / N.S.P.S. LAND TITLE SURVEY  
4181 N. MARSHALL WAY, SCOTTSDALE, ARIZONA



SHEET: 1 OF 1 DATE: 1-21-19 JOB NO.: 190108





Keep tabs  
for reference

DEC772 Navajo White  
LRV 70

To reorder, visit [dunnedwards.com](http://dunnedwards.com)  
or call (888) DE PAINT (337-2468)

Binder 9

DE6049 Chaps  
LRV 8

STUCCO SAMPLE  
FOR TEXTURE ONLY

LRV 5

Painted Steel - Black "Dark Engine" - LRV of 5%

Weathering Steel - Fully Patinaed - LRV of 8%

Weathering Steel - Initial Installation - LRV of 14%

1" Insulated Glass with Low-E Coating

Bronze Anodized Window and Entry Door Frames - LRV of 5%

Painted "Navajo White" Stucco - LRV of 33%

Copper Tubing to patina naturally to old penny brown

**Bentley Renovation**  
**Chen + Suchart Studio**

DE8377 Boat Anchor  
LRV 14

DE6350 Dark Engine  
LRV 5

SOLARBAN® 70XL (2) SOLEXIM® • Clear Glass Insulating Glass Unit

VLT	Exterior Reflect- ance	Interior Reflect- ance	SC	SHGC	U-Value Imperial (Winter)		Solar Factor (g) EN 410	U-Value EN 673 (W/m²K)
					Air	Argon		
58%	10%	13%	0.31	0.27	0.28	0.24	0.26	1.5



22-DR-2019  
4/30/2019

Keep color  
by reference

DEC772 Navajo White  
LRV 70

To reorder, visit [dunneandward.com](http://dunneandward.com)  
or call (888) DE PAINT (337-2468)

Binder 9

DE6049 Chaps  
LRV 8

LRV 5

Painted Steel - Black "Dark Engine" - LRV of 5%

Weathering Steel - Fully Patinaed - LRV of 8%

Weathering Steel - Initial Installation - LRV of 14%

1" Insulated Glass with Low-E Coating

Bronze Anodized Window and Entry Door Frames - LRV of 5%