

Case Number: 7-DR-2017
Project Name: Asian Bistro Restaurant
Project Address: 10225 & 10227 N. Scottsdale Rd.,
Scottsdale, Arizona



FRONT ELEVATION (NORTH)

COLOR: DE6121/ SLAMESE KITTEN
MATERIAL: E.I.F.S./ SMOOTH FINISH



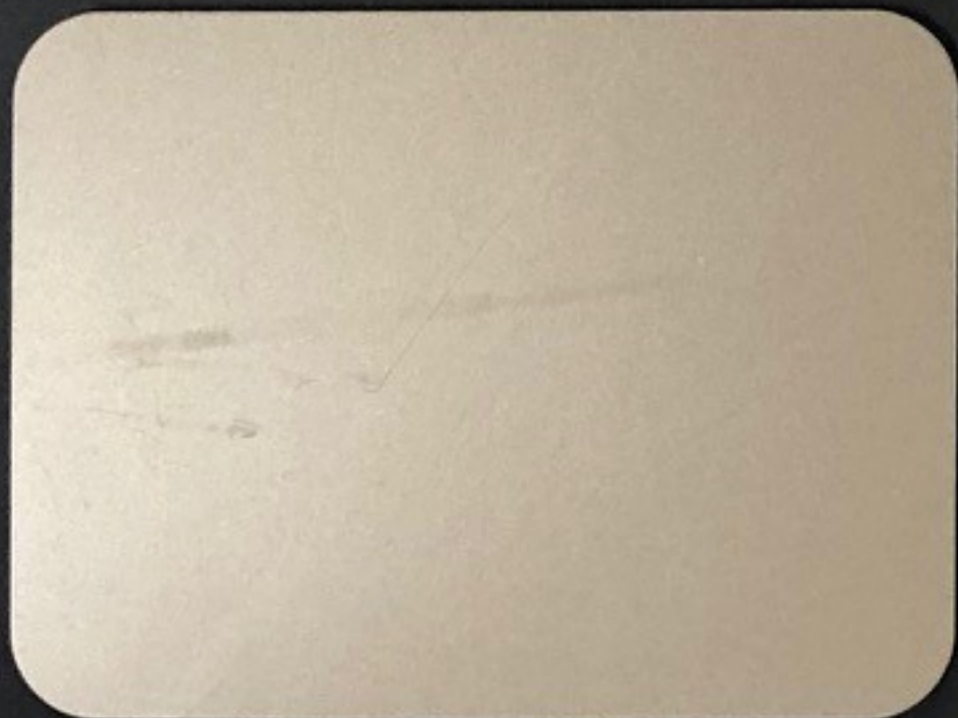
EAST, SOUTH & WEST ELEVATIONS

COLOR: DE6123/ TRAIL DUST
MATERIAL: SUPERLITE/ CENTER SCORED BLOCK, 8"X8"X16"
TOP COURSE: FLUTED BLOCK, 8"X8"X16"



FRONT ELEVATION - SCREEN PANELS

COLOR: DE5720/ DEEP IN THE JUNGLE
MATERIAL: 1/4" THICK PERFORATED STEEL PANELS



FRONT PILLARS (2)

COLOR: HARVEST GOLD MICA/ ALUCOBOND PANELS
MATERIAL: ALUCOBOND, COOL, PVDF-2/ GLOSS-30



FRONT ELEVATION/ WAINSCOT

COLOR: CARMEL/ ENVIRONMENTAL STONEWORKS
MATERIAL: CARMEL MOUNTAIN LEDGESTONE