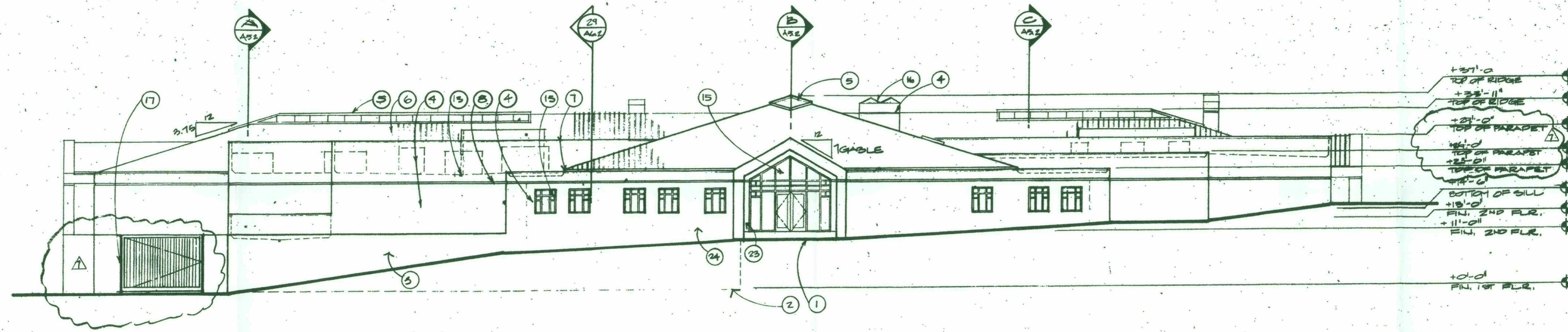
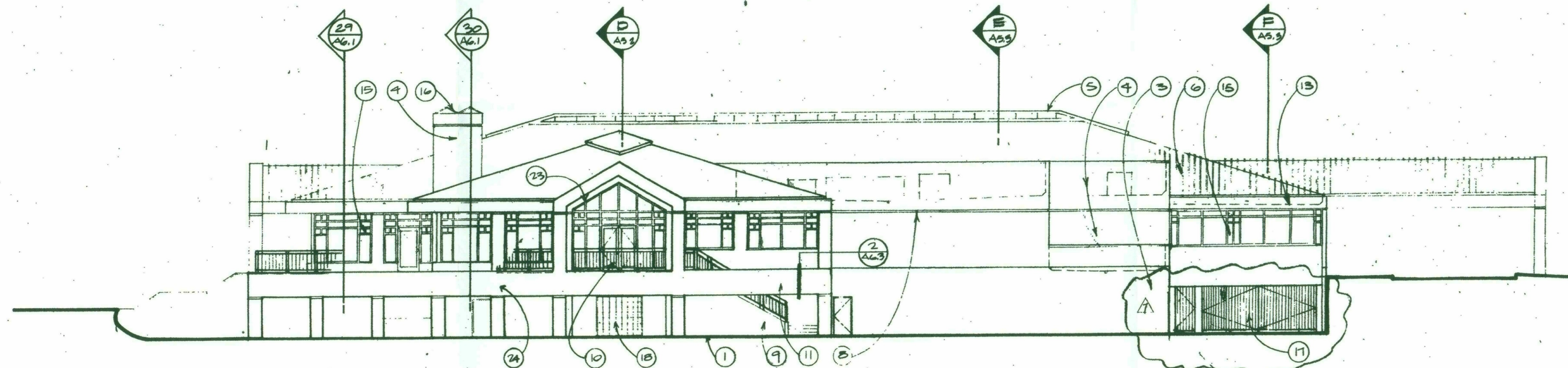


Case Research



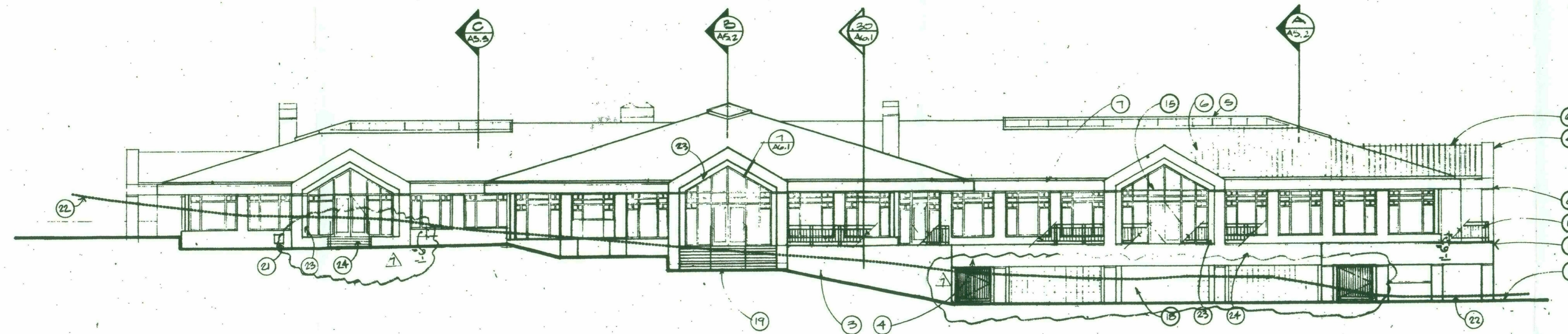
EAST ELEVATION

3/32"



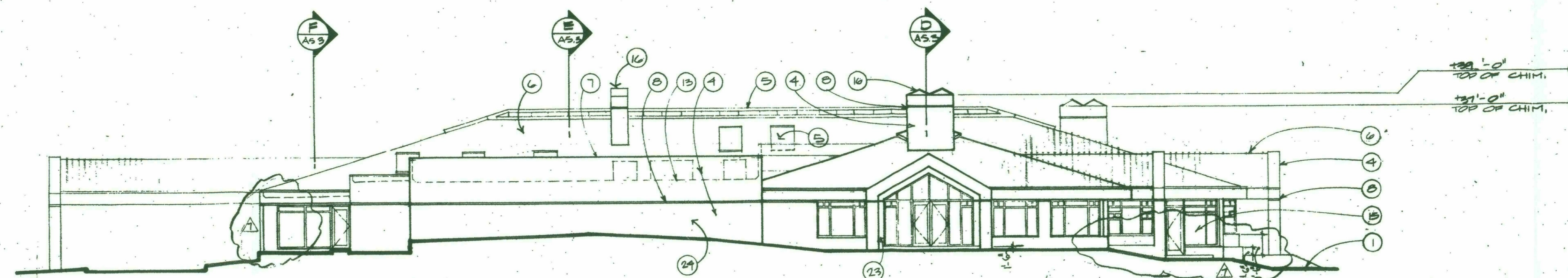
SOUTH ELEVATION

3/32"



WEST ELEVATION

3/32"



NORTH ELEVATION

3/32"

EXTERIOR ELEVATIONS

SCALE: 3/32"

NOTES

1. FOUNDATION
2. FINISH
3. SYNTHETIC FINISH ON BROWN PAINT ON C.M.U.
4. SYNTHETIC FINISH WITH RIGID INSULATION ON METAL FRAME
5. SKYLIGHT - SEE DETAILS 1 THRU 6 ON SHEET A6.5
6. METAL ROOFING
7. SYNTHETIC FINISH CAP - SEE DETAIL 1/A6.3
8. REVEL - SEE DETAIL 8/A6.4
9. STAIRS - SEE SHEET A6.4
10. GUARDRAIL - SEE DETAIL 6/A6.4
11. SPANDREL
12. CONTROL JOINT
13. LINE OF ROOF BEYOND
14. LINE OF MECHANICAL EQUIPMENT PROFILE BEYOND
15. WINDOW ASSEMBLY
16. METAL CHIMNEY CAP - SEE DETAIL 29/A6.7
17. GATE - SEE DETAIL 26-30/A7.3
18. DECORATIVE CLAY TILE BLOCK
19. CONCRETE STEPS
20. NOT USED
21. FIRE DEPARTMENT VALVE
22. EXISTING CURB
23. DELETED CHIMNEYS
24. PAINT COLOR - FRASER
25. BUILDING COLOR - FRASER 5233

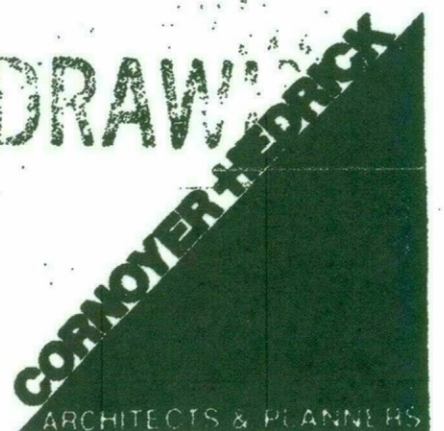
FOR REFERENCE

TROON GOLF & COUNTRY CLUB
 SCOTTSDALE, ARIZONA
 PREPARED FOR: DESERT FOOTHILLS DEVELOPERS
 25000 NORTH WINDY WALK DRIVE

Date: 6-22-85
 Job No.: 85032
 Project Mgr.: PICKRELL
 Drawn By: J. PLANK
 Checked By: T.G.A.
 Revisions:
 A 10-22-85 SHIMME BID
 B 11-22-85 CITY COR.
 C 12-18-85 CITY COR.
 D 1-24-86 COR.

AS BUILT DRAWING

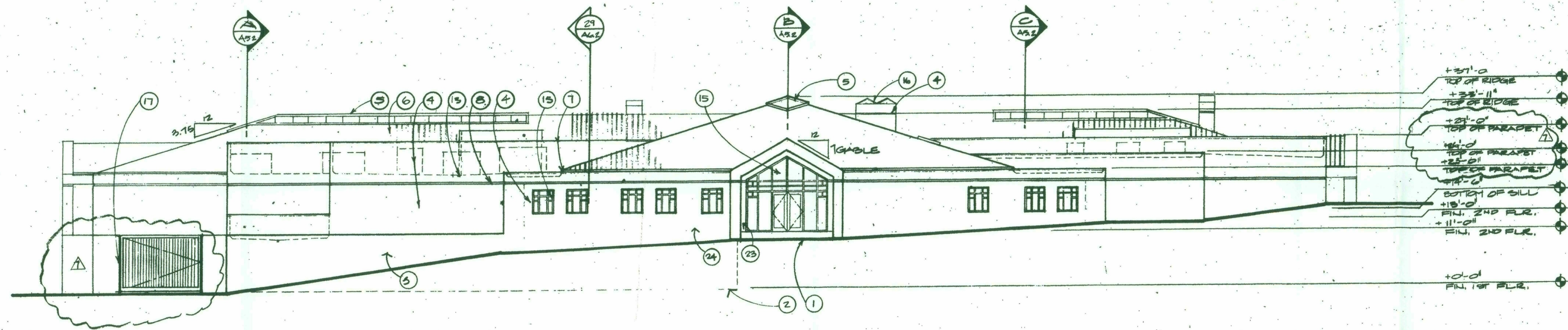
GENERAL NOTE:
 ALL BUILDING COLORS TO
 MATCH THOSE APPROVED
 BY DESIGN REVIEW.



28-DR-2016
09/27/16

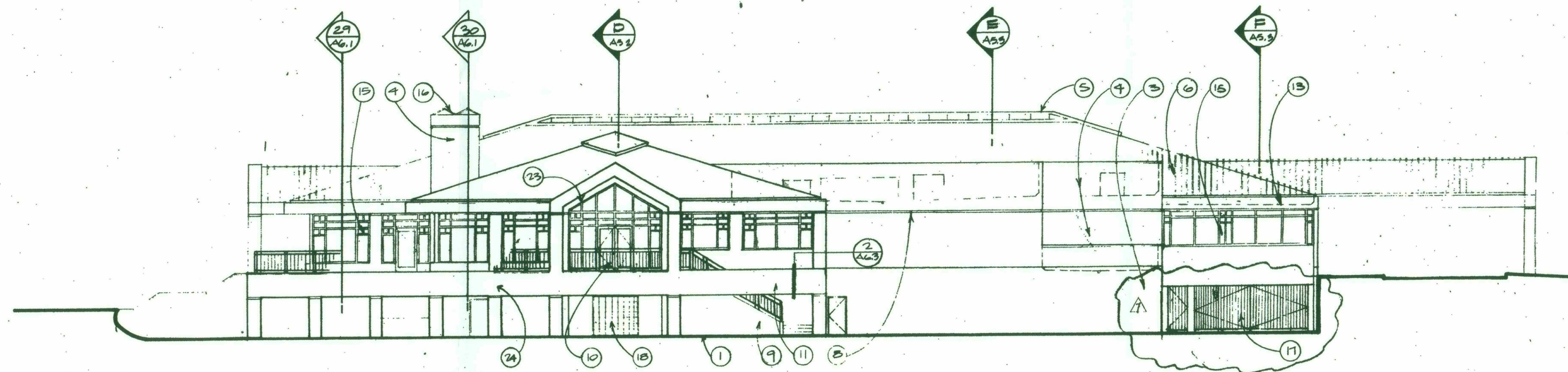
117DR85

A5.1



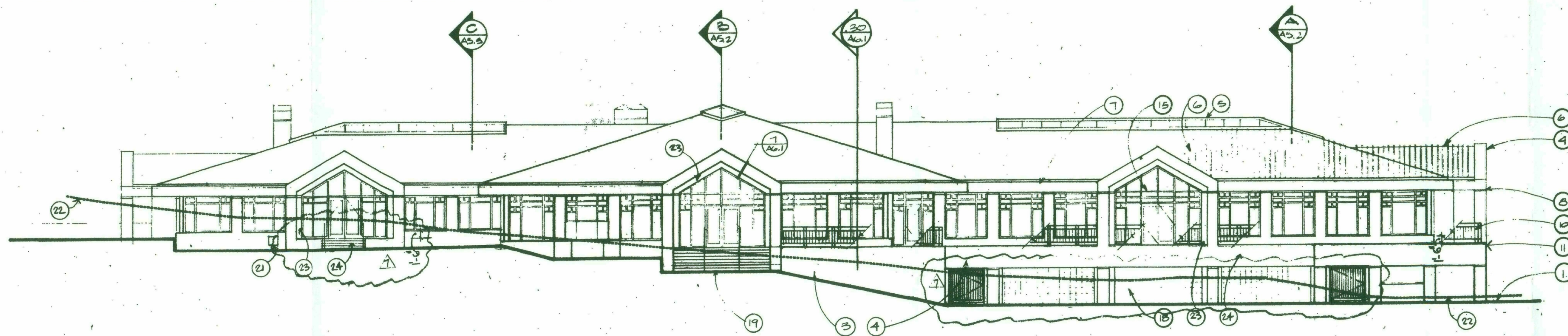
EAST ELEVATION

3/32"



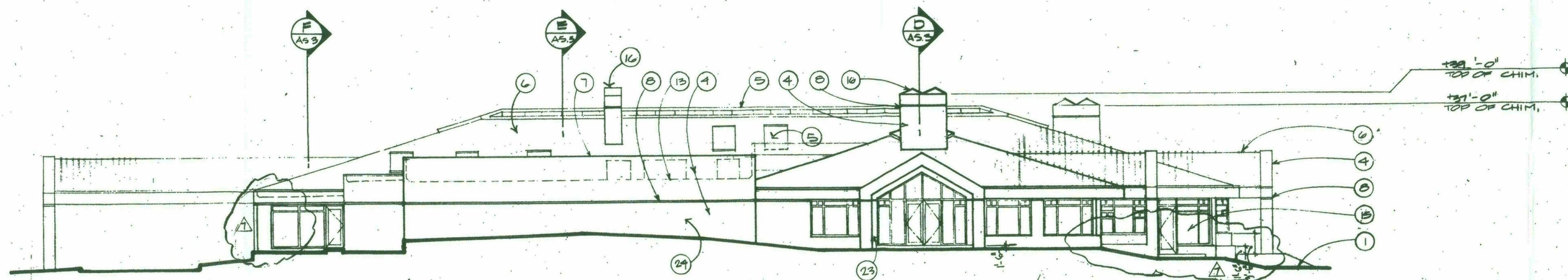
SOUTH ELEVATION

3/32"



WEST ELEVATION

3/32"



NORTH ELEVATION

3/32"

EXTERIOR ELEVATIONS

SCALE: 3/32"

NOTES

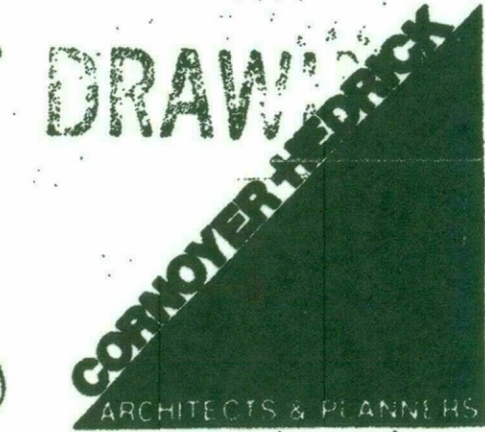
1. FOUNDATION DRAWINGS
2. SYNTHETIC FINISH ON BRONZE COAT ON C.M.U.
3. SYNTHETIC FINISH WITH RIGID INSULATION ON METAL FRAME
4. SKYLIGHT - SEE DETAILS 1 THROUGH 6 ON SHEET A6.5
5. METAL ROOFING
6. SYNTHETIC FINISH CAP - SEE DETAIL 1/A6.3
7. REVEL - SEE DETAIL 8/A6.4
8. STAIRS - SEE SHEET A6.4
9. GUARDRAIL - SEE DETAIL 6/A6.4
10. SPANDREL
11. CONTROL JOINT
12. LINE OF ROOF BEYOND
13. LINE OF MECHANICAL EQUIPMENT PROFILE BEYOND
14. WINDOW ASSEMBLY
15. METAL CHIMNEY CAP - SEE DETAIL 25/A6.7
16. GATE - SEE DETAIL 26-30/A7.3
17. DECORATIVE CLAY TILE BLOCK
18. CONCRETE STEPS
19. NOT USED
20. FIRE DEPARTMENT VALVE CABINET
21. EXISTING OPENING DELETED ON A6.5
22. EXISTING COLOR - FRABBE WOOD
23. BUILDING COLOR - FROZEE 5233

TROON GOLF & COUNTRY CLUB
 25000 NORTH WINDY WALK DRIVE
 SCOTTSDALE, ARIZONA
 PREPARED FOR: DESERT FOOTHILLS DEVELOPERS

Date: 8-22-89
 Job No.: 85052
 Project Mgr.: ROSEHILL
 Drawn By: J. LANK
 Checked By: T. G. VIT
 Revisions:
 10-22-89 SHIPPE BLD
 11-22-89 CITY COR.
 12-18-89 CITY COR.
 2-24-86 COR.

AS BUILT DRAWING

GENERAL NOTE:
 ALL BUILDING COLORS TO
 MATCH THOSE APPROVED
 BY DESIGN REVIEW



28-DR-2016
09/27/16

FOR REFERENCE

117DR85

A5.1