



**Development Review (Minor)
Staff Approval**

**41-DR-2007#4
4020 Building
Master Sign Program
Amendment**

APPLICATION INFORMATION	
LOCATION: 4020 N Scottsdale Rd	APPLICANT: Shawn Britson
PARCEL: 130-12-024	COMPANY: Identity Sign Group Inc
Q.S.: 16-44	ADDRESS: 10027 N 12Th St Phoenix, AZ 850201713
ZONING: D/OC-2 DO	PHONE: 602-279-9268
<u>Request:</u> Amend the 4020 Building Master Sign Program to allow additional signage on the north tower elevation, allow a partial non-contiguous sign envelope for Suite 102, and provide signage allowances for Suite 104.	

STIPULATIONS

- This master sign program, Case# 41-DR-2007#4, replaces all previous 4020 Building Master Sign Programs and Amendments.**
- All building signs in the 4020 Building shall conform to this 4020 Building Master Sign Program Amendment, Case# 41-DR-2007#4, submitted by Identity Sign Group, Inc. & Old Town Retail, LLC, with a City Staff approval date of June 8, 2020.
- Non-contiguous and contiguous building wall signs are allowed on the designated sign envelopes as shown on Pages 6, 7 and 13, with Landlord and City of Scottsdale approval.
- If any building-mounted wall sign cannot install its raceway behind the building façade due to unforeseen circumstances, then all sign characters shall be mounted on a thin metal backer panel to fully shield any raceway from view. The maximum thickness of an exterior raceway shall not exceed two (2) inches.
- Any modifications to the 4020 Building Master Sign Program shall require Development Review Board or City Staff Approval.
- All signs shall require separate review, approval and permits.

Related Cases: 41-DR-2007#3, 41-DR-2007#2, 41-DR-2007, 6-BA-2007, 110-DR-2005#2, 110-DR-2005

CONSTRUCTION DOCUMENT PLAN REVIEW SUBMITTAL REQUIREMENTS

Submit a PDF copy of this approval letter plus a completed Sign Permit Application online for review & permits:

SIGN PERMIT APPLICATION:	<input checked="" type="checkbox"/>	https://www.scottsdaleaz.gov/codes/signs
DIGITAL SUBMITTAL LINK:	<input checked="" type="checkbox"/>	https://eservices.scottsdaleaz.gov/bldgresources/Plans

Expiration of Development Review (Minor) Approval

This approval expires two (2) years from date of approval if a permit has not been issued, or if no permit is required, work for which approval has been granted has not been completed.

Staff Signature:  Date: June 8, 2020
Andrew Chi, Planner

Planning and Development Services

7447 East Indian School Road, Suite 105, Scottsdale, Arizona 85251 ♦ www.ScottsdaleAZ.gov

Old Town Retail, LLC

April 24, 2020

Mr. Andrew Chi
Planner
City of Scottsdale | Planning & Development Department
7447 East Indian School Road, Suite 105
Scottsdale, Arizona 85251

RE: 4020 N. Scottsdale Master Signage Approval

Dear Mr. Chi:

Please let this letter serve as approval of the 4020 Master Sign Plan Amendment submitted by Identity Signs. Please let me know if you have any questions.

Best regards,



Robert Jones
Managing Member
Old Town Retail, LLC

The 4020 Building

Master Sign Program Amendment

Case# 41-DR-2007#4

June 2020

STIPULATION SET
RETAIN FOR RECORDS

APPROVED

BY THE CITY OF SCOTTSDALE PLANNING DEPARTMENT

41-DR-2007#4
CASE NUMBER

Andrew Chi
APPROVED BY

6/8/2020
DATE

CONSTRUCTION AND INSTALLATION SHALL BE IN ACCORDANCE WITH
THIS PLAN AND ANY AND ALL DEVIATIONS WILL REQUIRE REAPPROVAL



Southeast & East Elevation View

Address: 4020 N. Scottsdale Road Scottsdale, Arizona 85251

Zoning District: D/OC-2 DO

The 4020 Building

Master Sign Program Amendment



East & Northeast Elevation View

The 4020 Building

Master Sign Program Amendment



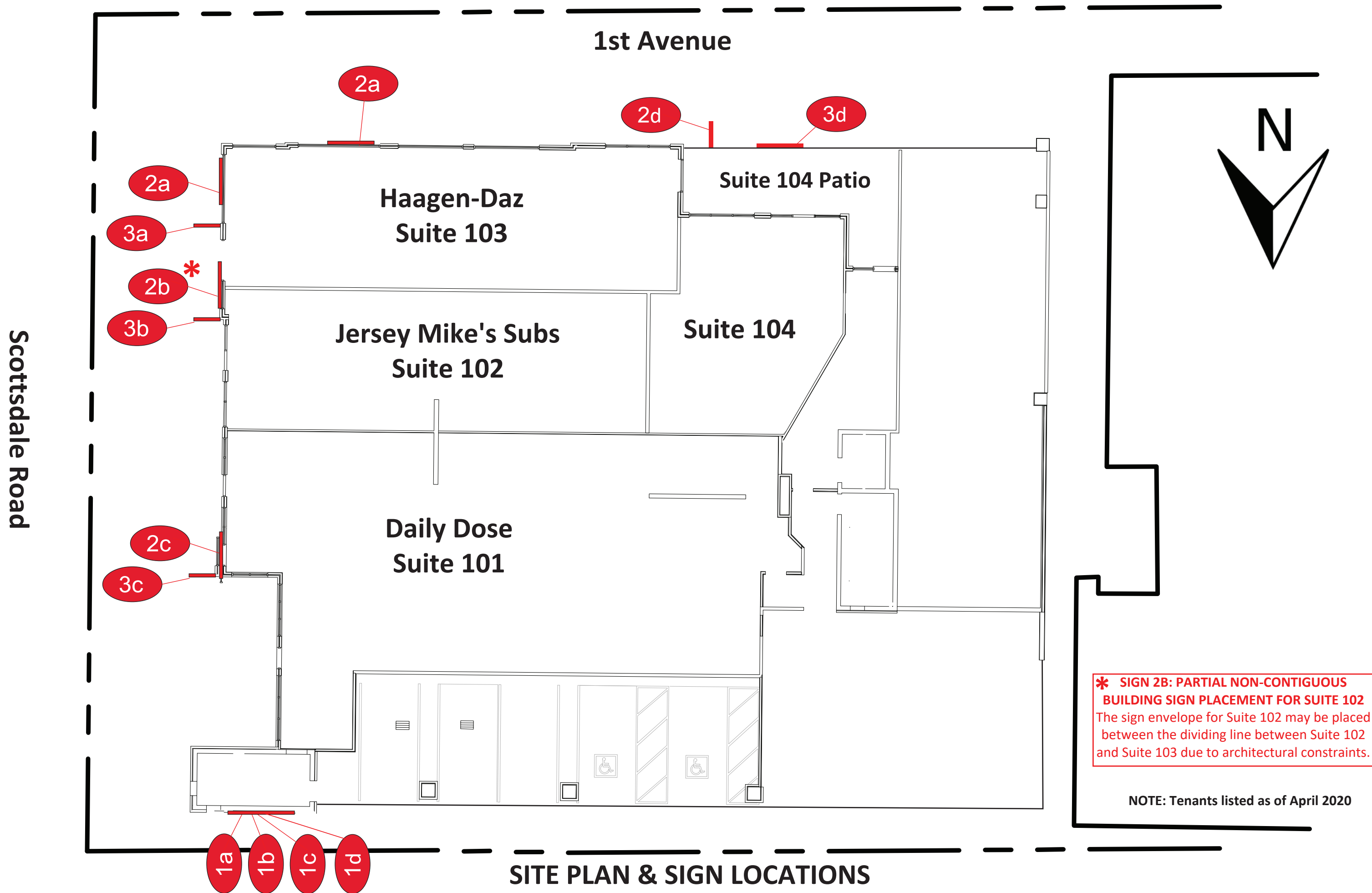
South Elevation View

The 4020 Building

Master Sign Program Amendment



North Elevation View

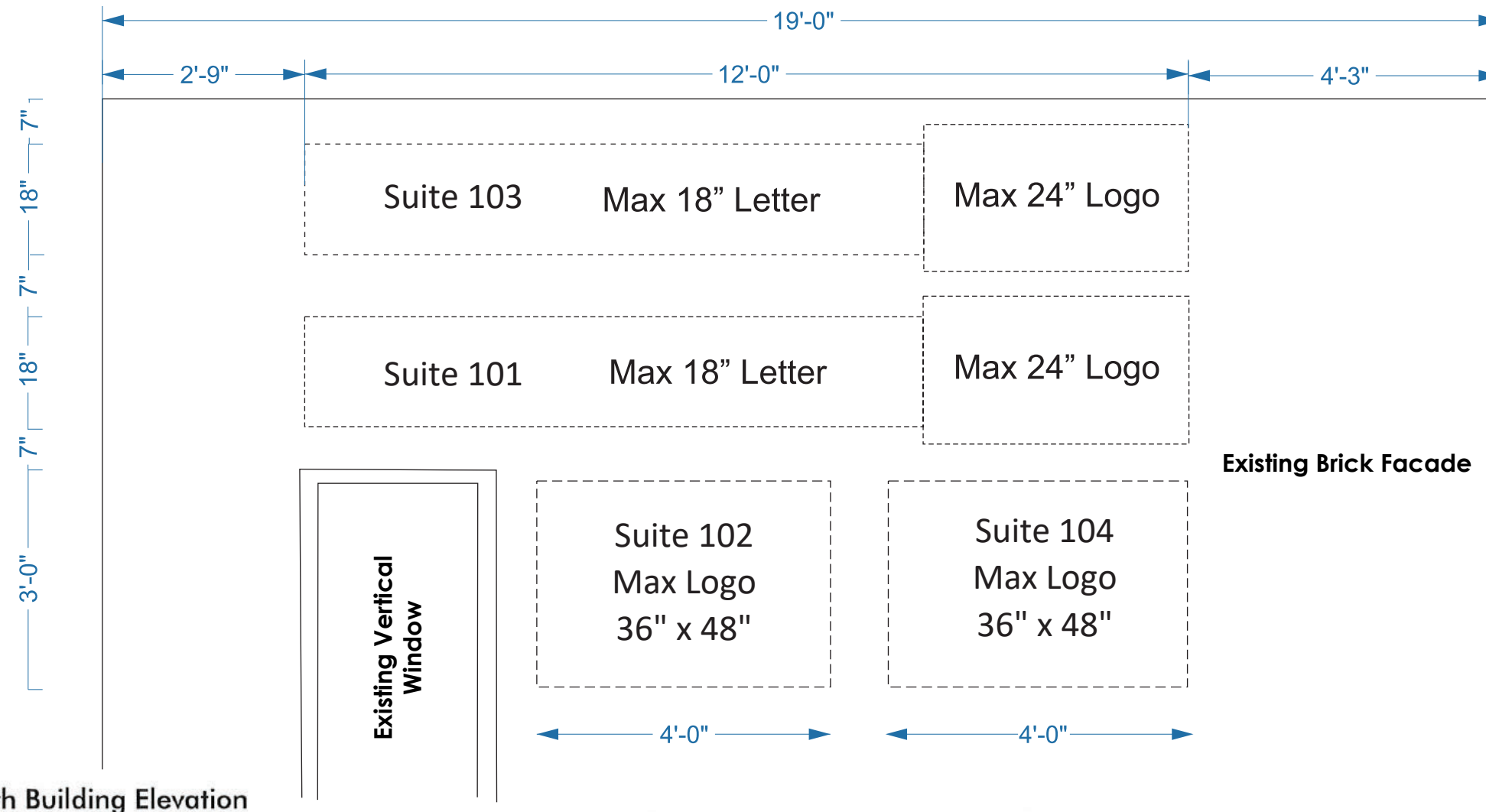


*** SIGN 2B: PARTIAL NON-CONTIGUOUS BUILDING SIGN PLACEMENT FOR SUITE 102**
 The sign envelope for Suite 102 may be placed between the dividing line between Suite 102 and Suite 103 due to architectural constraints.

NOTE: Tenants listed as of April 2020

SITE PLAN & SIGN LOCATIONS

Tower Sign Specifications OPTION A



North Building Elevation
Scale: NTS

***OPTION A NOTE:** See Option B on the following page for additional placement options.

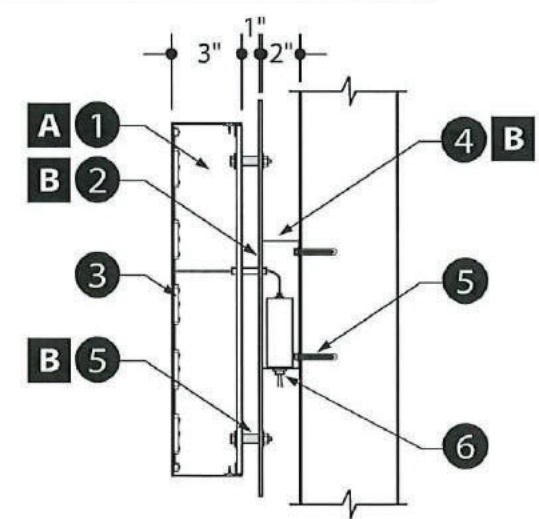
1 Tower Wall Sign - Halo Illuminated Reverse Pan Channel Letter /Logo with Backer Panel

- 1 **Reverse Channel Letters:** Reverse pan channel letter/logo w/ paint finish.
Letter Face>Returns: .125 aluminum with 3" deep .063 aluminum returns.
Letter Backs: .150 waterjet-cut clear Lexan w/ perimeter alum. angle clips.
- 2 **Backer Panel:** .125 Plate aluminum with MAP paint finish.
- 3 **Illumination:** ILT-2x2-W Quad LED modules wired to remote Low-Voltage UL power supplies located in rear wireway.
- 4 **Low-Voltage Wireway:** 2" deep .063 aluminum with MAP paint finish.
- 5 **Installation:** Mount letters 1" from backer panel using 1" aluminum spacers with MAP painted finish. Attach display flush to wall surface using 1/2" dia. expandable fasteners.
- 6 **Electrical Power Supply:** Customer to provide one (1) 20amp, 120v sign circuit to the display.

Color Key

- A** MAP Custom Color TBD
- B** MAP 25843 Victorian Teal

*Corporate colors and fonts are allowed with landlord approval.

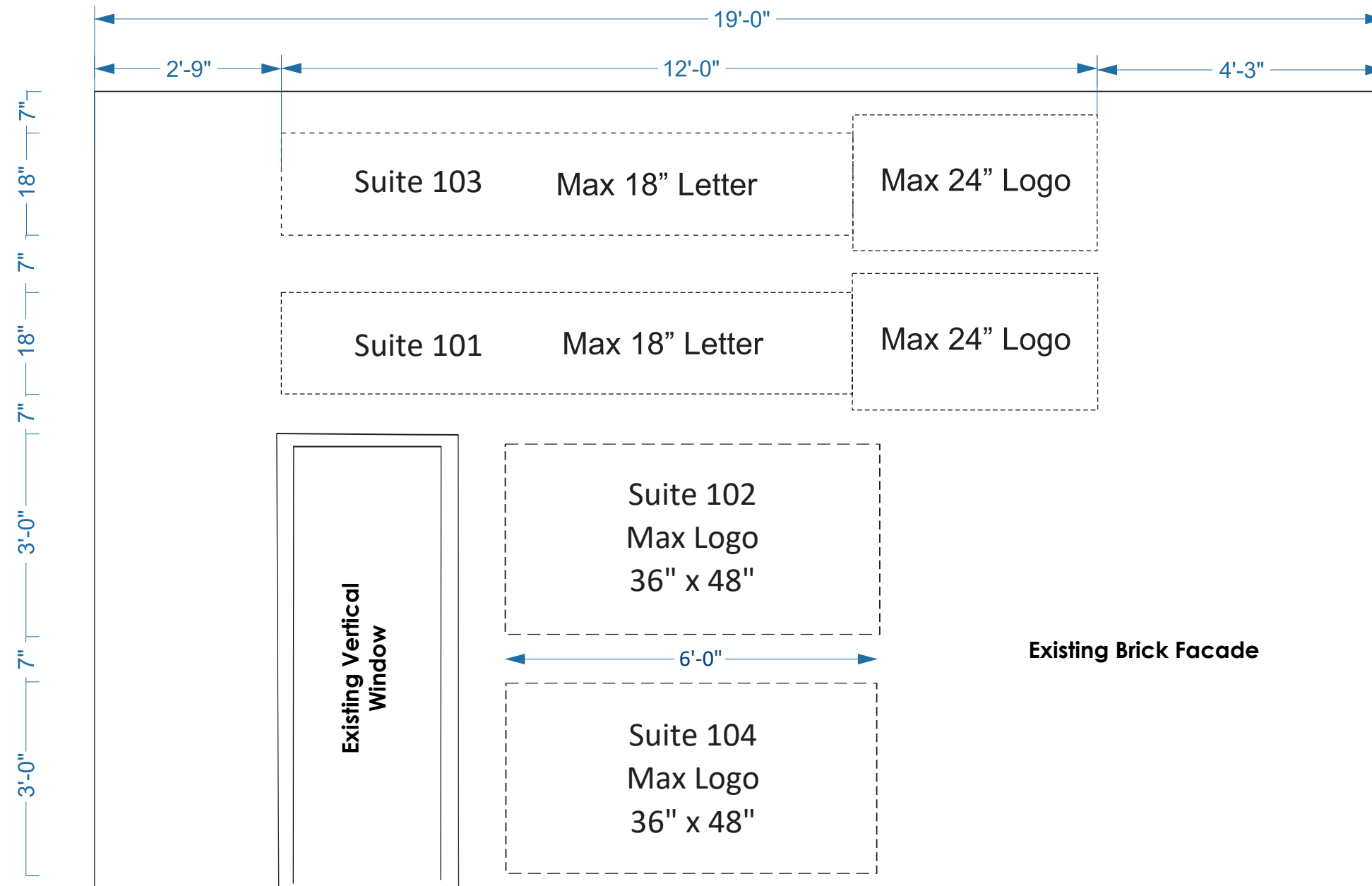


Section View
Scale: 3/4" = 1'-0"

***Non-contiguous building wall sign location requirements for 1st floor tenants**

***Signs shall be deducted from the tenant's sum total sign area allowance**

Tower Sign Specifications OPTION B



***OPTION B NOTE:** The non-contiguous sign envelopes for Suite 102 and Suite 104 can be moved so that the sign envelope for Suite 102 can be centered and be directly below the sign envelope for Suite 101, and the sign envelope for Suite 104 can be centered and be directly below the sign envelope for Suite 102.

North Building Elevation

Scale: NTS

Refer to the previous page (Option A) 'Tower Wall Sign - Halo Illuminated Reverse Pan Channel Letter/Logo with Backer Panel' for sign design & install standards.

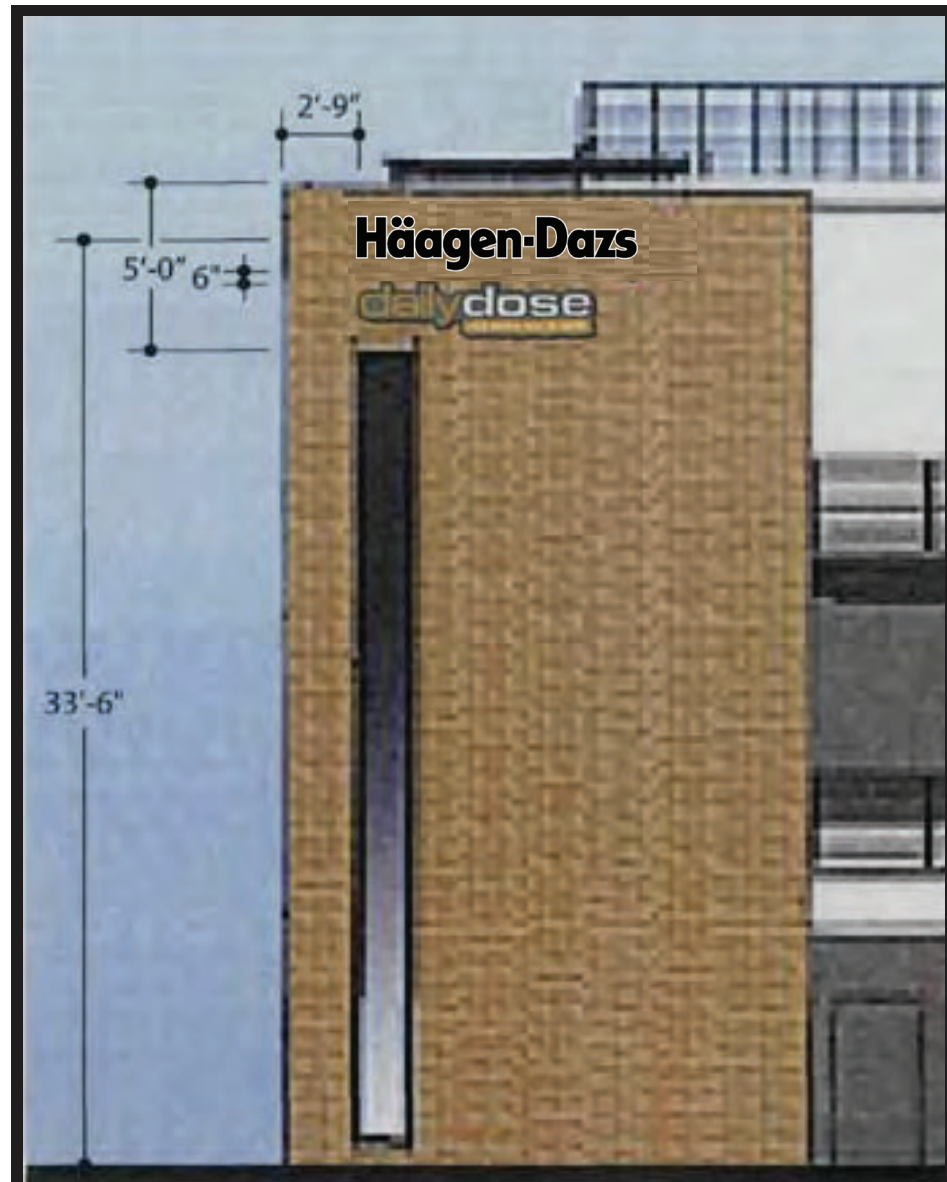
***Non-contiguous building wall sign location requirements for 1st floor tenants**

***Signs shall be deducted from the tenant's sum total sign area allowance**

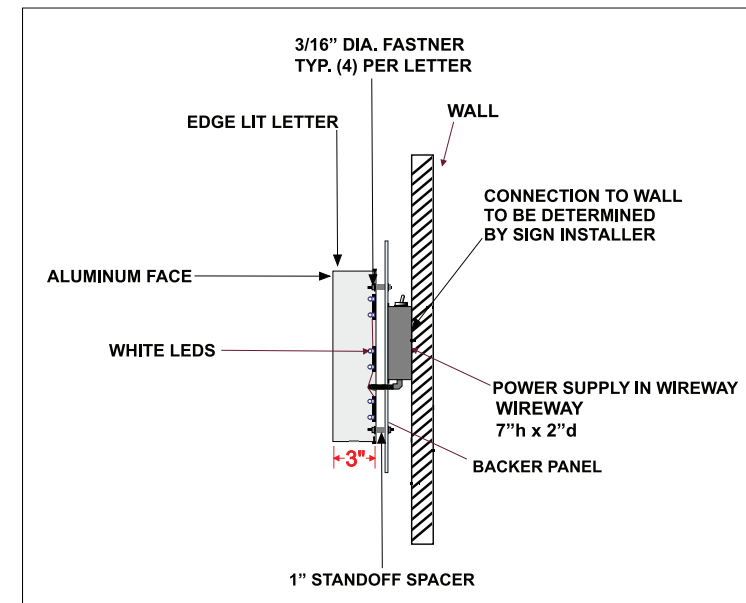
EXAMPLE



1a Elevation View
Scale: 1" = 1'-0"



NORTH TOWER ELEVATION



NOTES:

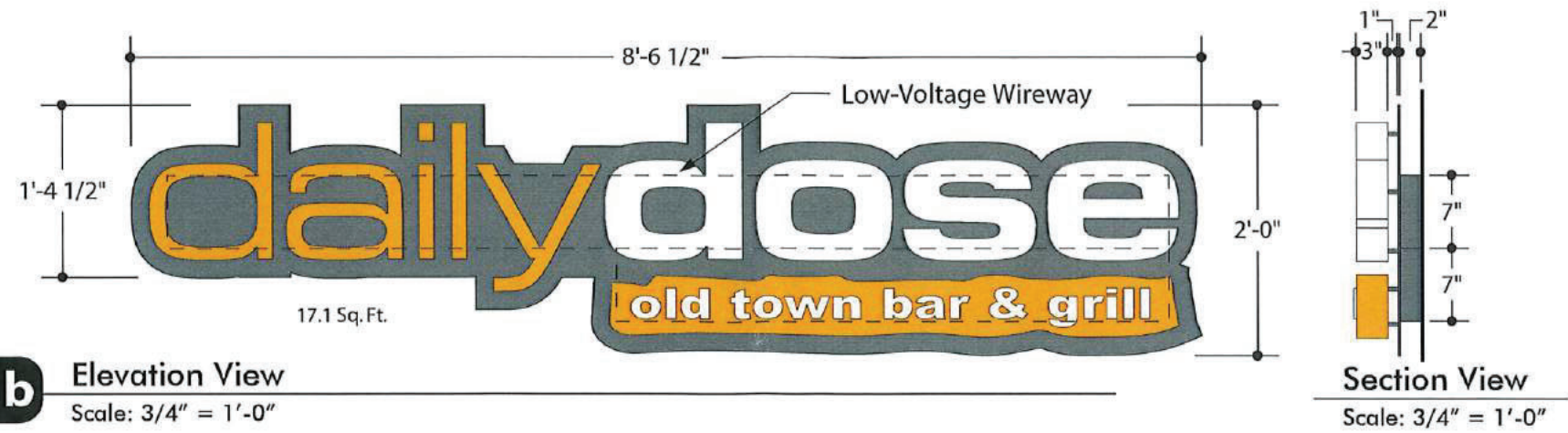
EDGE-LIT 17"h X 3"d LETTER WITH FLAT BLACK ALUMINUM FACE
ALUMINUM BACK PANEL .125" FLAT WHITE
ACRYLIC 3" RETURN
WIREWAY 7"h x 2"d FLAT WHITE
LED - WHITE

INSTALLATION:
MOUNTED LETTERS 1" FROM BACKER PANEL WITH ALUMUNIM SPACER ATTACHED ASSEMBLED
SIGN AND WIRE WAYWAY FLUSH TO EXTERIOR WALL USING 1/2" EXPANSION ANCHORS (INSTALL
CONTRACTOR TO VERIFY)

SIGN TO BE UL LISTED (mounted on top of letter from view)
CUSTOMER TO SUPPLY 120V 20A CIRCUIT WITH 4' OF SIGN

ALL DIMENSIONS TO BE VERIFIED BY GENERAL AND SIGN CONTRACTOR

EXAMPLE



Tower Wall Display - Halo Illuminated Reverse Pan Channel Letter /Logo with Backer Panel

Manufacture one (1) LED illuminated reverse pan channel letter and logo display backed with 3/16" clear Lexan backs. Copy: 'dailydose - Logo'.

Letter Material: .125 plate aluminum faces with 3" deep .063 welded aluminum returns. Paint Finish: Matthews MP 11477 White.

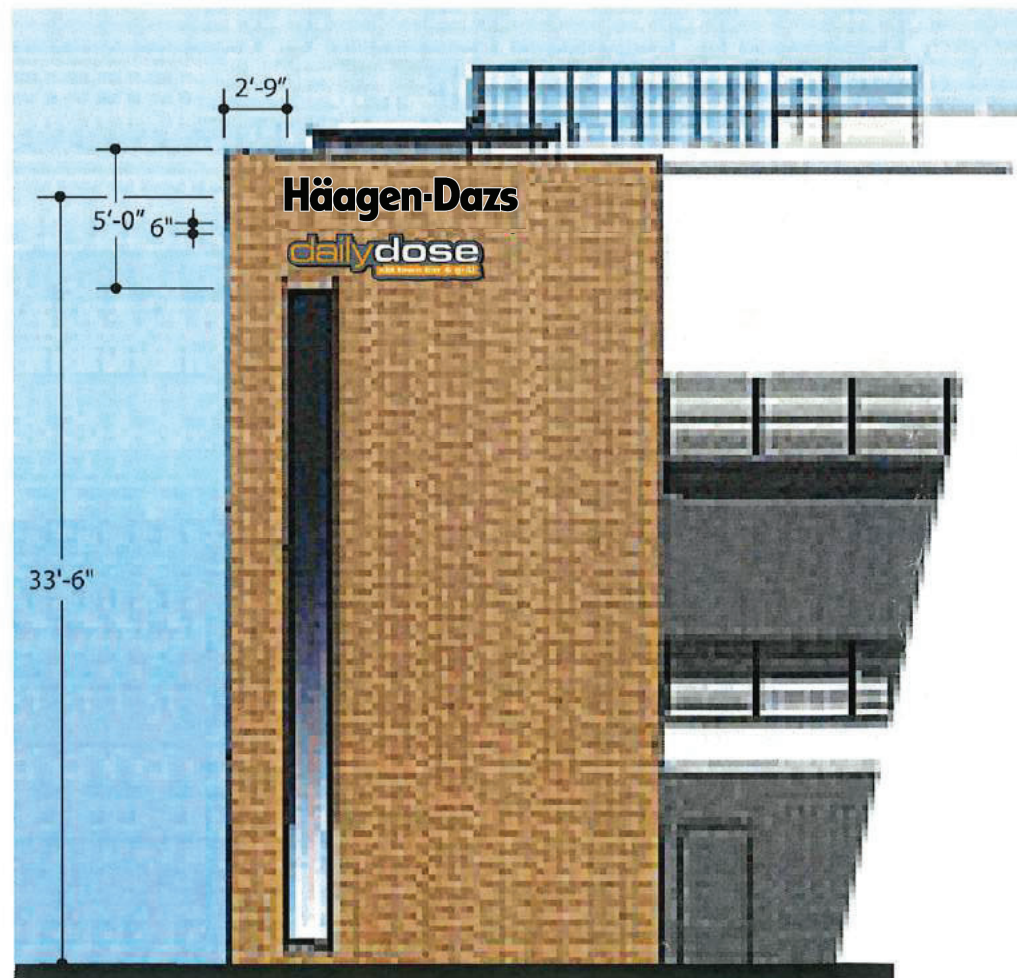
Illumination: ILT-2x2-W Quad LED modules wired to remote Low-Voltage UL power supplies located in rear wireway.

Backer Panel: .125 Plate aluminum with MAP painted finish.

Low-Voltage Wireway: 2" deep .063 aluminum with MAP paint finish.

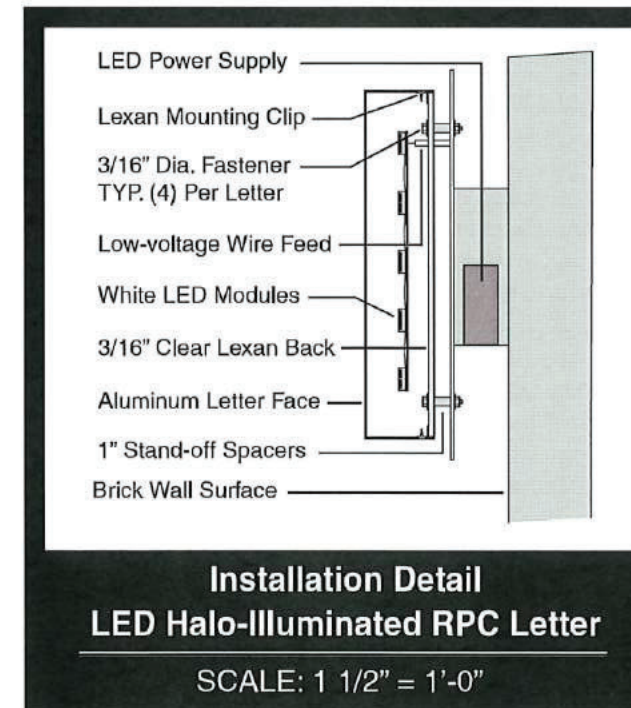
Installation: Mount letters 1" from backer panel using 1" aluminum spacers with MAP painted finish. Attach display flush to wall surface using 1/2" dia. expandable fasteners.

Customer to provide one (1) 20amp, 120v sign circuit to the display.



North Elevation

Scale: 1/8" = 1'-0"



EXAMPLE



Scale = 1" = 1'
Sq ft = 3.0 x 4.0 = 12.0 sq ft

1c Elevation View
Scale: 1" = 1'-0"



Halo illuminated RPC letters
Painted red faces, white painted returns, 3" deep returns

3" DEEP RETURN
ALUMINUM BACKER

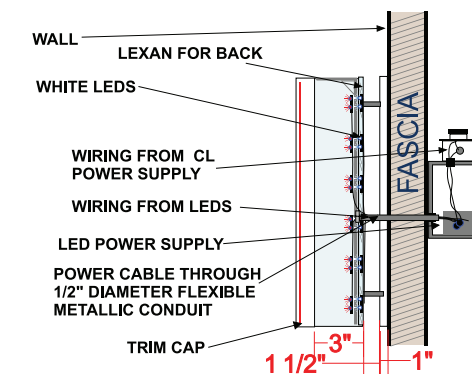
HALO LIT
VINYL APPLIED TO FACES
RED (3630-33)
WHITE TRIM CAP
3" DEEP RETURN

WHITE VINYL APPLIED



Sign #3 Sign Area

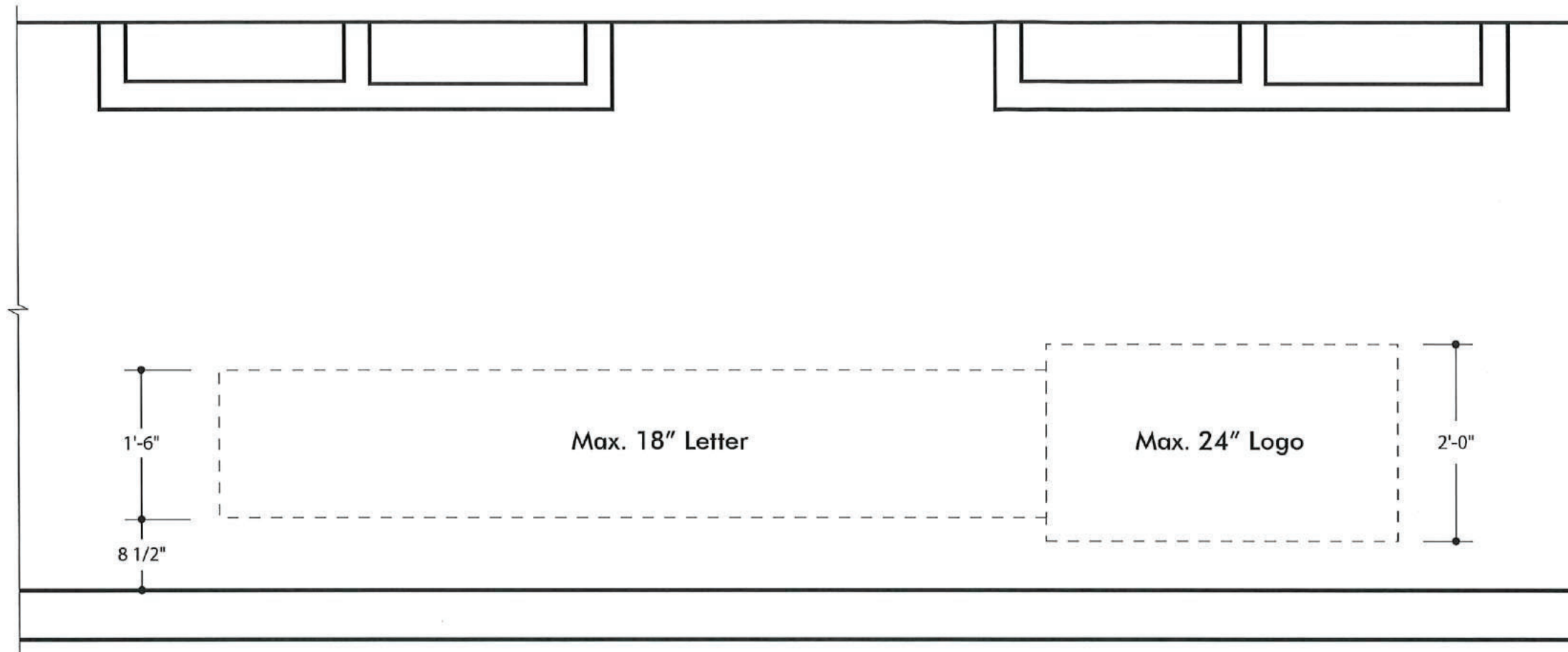
Specifications:	
A - WALL	
B - CHANNEL LETTER RETURNS	
C - WIRING CONDUIT FROM PRIMARY CIRCUIT	
D - LED MODULE	
E - LED	
F - DISCONNECT SWITCH	
G - JUNCTION BOX TO CONNECT TO PRIMARY WIRING	
H - WIRING FROM CL POWER SUPPLY	
I - WIRING FROM POWER SUPPLY TO DISCONNECT SWITCH	
J - FASTENERS TO MOUNT RACEWAY TO WALL	
K - POWER SUPPLY	
L - PLEXIGLAS FACES	
M- TRIMCAP	



This sign is intended to be installed in accordance with the requirements of Article 600 of the National Electrical Code and/or other applicable local codes. This includes proper grounding and bonding of the sign. The location of the disconnect switch after installation shall comply Article 600.6 (A) (1) of the National Electrical Code."

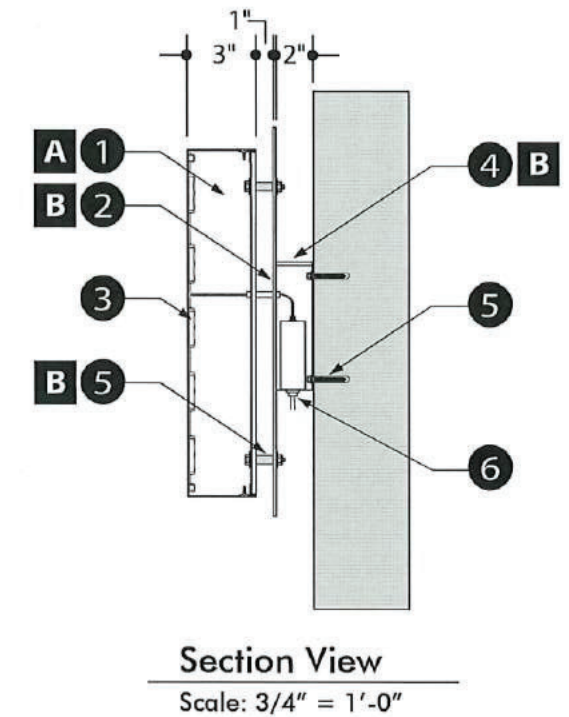
White Acrylic # 7382	Red Acrylic # 2793	Blue 3M 3630-36	Red 3M 3630-33	White	Red (Halo-Lit Only)
Face	Face	Vinyl	Vinyl	LED Units	LED Units

Primary Sign Specifications



East Building Elevation

Scale: 3/4" = 1'-0"



Section View
Scale: 3/4" = 1'-0"

2 Primary Wall Sign - Halo Illuminated Reverse Pan Channel Letter /Logo with Backer Panel

- 1 **Reverse Channel Letters:** Reverse pan channel letter/logo w/ paint finish.
Letter Face/Returns: .125 aluminum with 3" deep .063 aluminum returns.
Letter Backs: .150 waterjet-cut clear Lexan w/ perimeter alum. angle clips.
- 2 **Backer Panel:** .125 Plate aluminum with MAP paint finish.
- 3 **Illumination:** ILT-2x2-W Quad LED modules wired to remote Low-Voltage UL power supplies located in rear wireway.

- 4 **Low-Voltage Wireway:** 2" deep .063 aluminum with MAP paint finish.
- 5 **Installation:** Mount letters 1" from backer panel using 1" aluminum spacers with MAP painted finish. Attach display flush to wall surface using 1/2" dia. expandable fasteners.
- 6 **Electrical Power Supply:** Customer to provide one (1) 20amp, 120v sign circuit to the display.

Color Key

- A Matthews - MP Custom Color TBD
- B Matthews - MP 25843 Victorian Teal

*Corporate colors and fonts are allowed with landlord approval.

131.50"

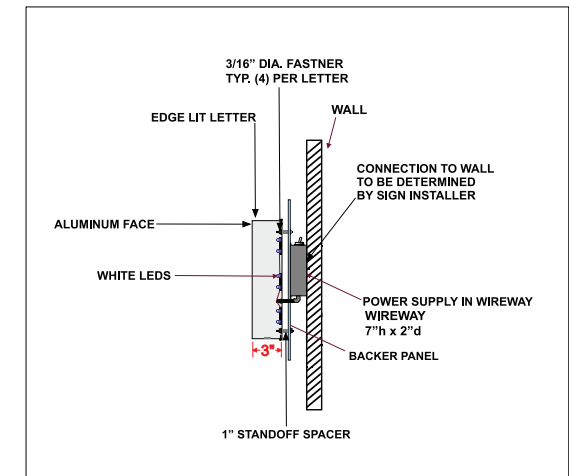
EXAMPLE

28.0" OAH

18.0"

Häagen-Dazs

- 1 PRIMARY ID EAST ELEVATION
SCALE: 1" = 1'
TOTAL AREA - 25.50 SF x 90% = 23 SF



- 2a Elevation View
Scale: 1" = 1'-0"



East Elevation View

NOTES:

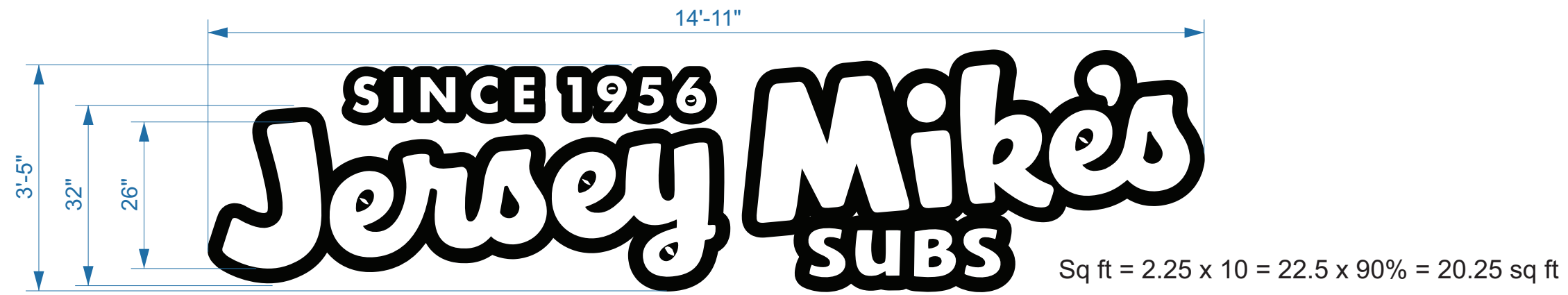
EDGE-LIT 17" h X 3" d LETTER WITH FLAT BLACK ALUMINUM FACE
ALUMINUM BACK PANEL .125" FLAT WHITE
ACRYLIC 3" RETURN
WIREWAY 7" h x 2" d FLAT WHITE
LED - WHITE

INSTALLATION:

MOUNTED LETTERS 1" FROM BACKER PANEL WITH ALUMUNIM SPACER
ATTACHED ASSEMBLED SIGN AND WIRE WAYWAY FLUSH TO EXTERIOR WALL
USING 1/2" EXPANSION ANCHORS (INSTALL CONTRACTOR TO VERIFY)

SIGN TO BE UL LISTED (mounted on top of letter from view)
CUSTOMER TO SUPPLY 120V 20A CIRCUIT WITH 4' OF SIGN

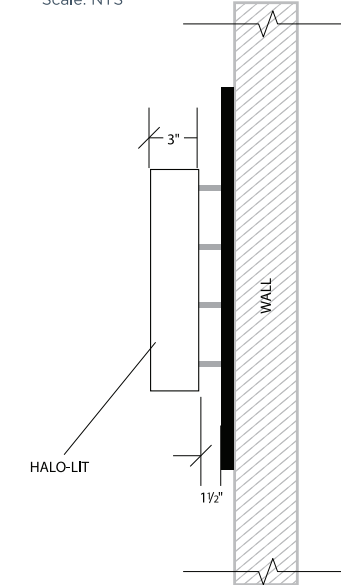
ALL DIMENSIONS TO BE VERIFIED BY GENERAL AND SIGN CONTRACTOR



EXAMPLE

Side Profile

Scale: NTS



2b Elevation View

Scale: 3/4" = 1'-0"

Fabricate and install one set of RPC halo illuminated letters mounted to a black painted aluminum backer panel. Letters will be constructed using Aluminum faces and returns and painted white. Letters will be internally illuminated with white leds. Backer panel will be flush mounted to the wall and letters will stand of the backer panel 1-1/2".

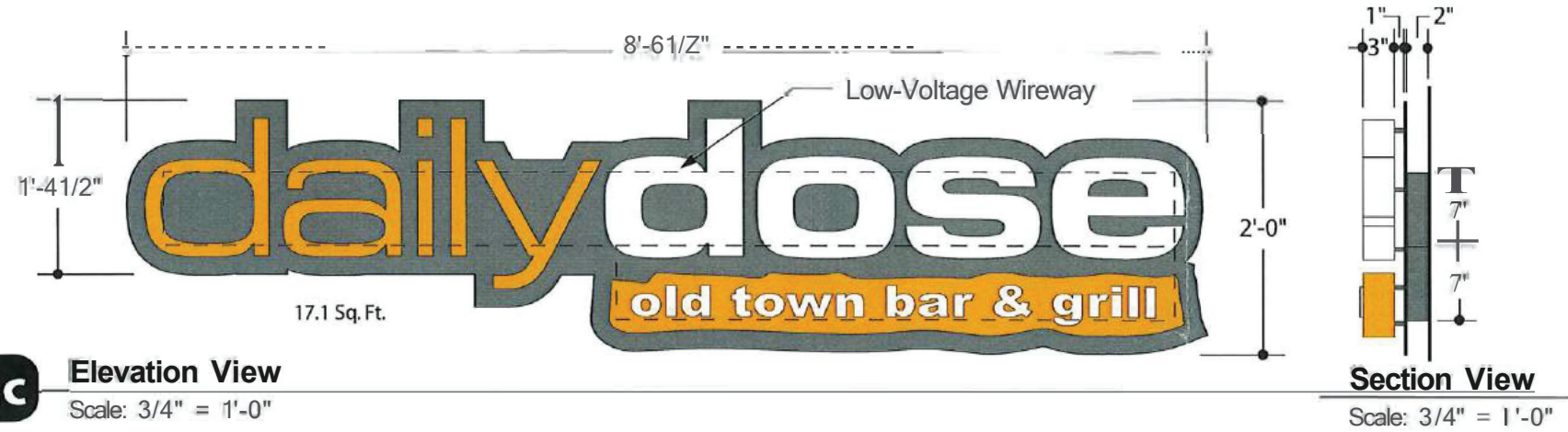
PARTIAL NON-CONTIGUOUS BUILDING SIGN PLACEMENT FOR SUITE 102

The sign envelope for Suite 102 may be placed between the dividing line between Suite 102 and Suite 103 due to architectural constraints.



East Elevation View & Sign Envelope Location for Suite 102

EXAMPLE



2c

Elevation View

Scale: 3/4" = 1'-0"

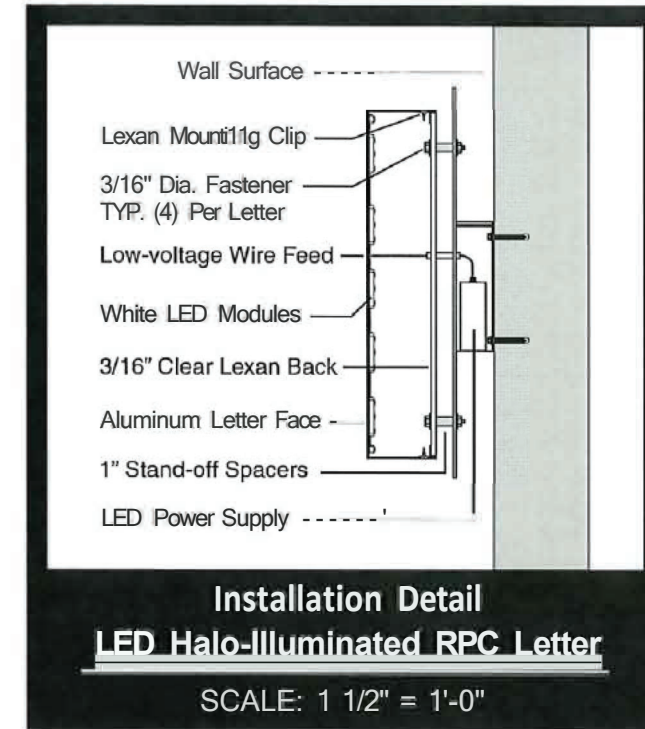
Section View

Scale: 3/4" = 1'-0"

Primary Tenant Display- Halo Illuminated Reverse Pan Channel Letter /Logo with Backer Panel

Manufacture one (1) LED illuminated reverse pan channel letter and logo display backed with 3/16" clear Lexan backs. Copy: 'dailydose - Logo'.
 Letter Material: .125 plate aluminum faces with 3" deep .063 welded aluminum returns. Paint Finish: Matthews MP 11477 White.
 Illumination: ILT-2x2-W Quad LED modules wired to remote Low-Voltage UL power supplies located in rear wireway.

Backer Panel: .125 Plate aluminum with MAP painted finish.
 Low-Voltage Wireway: 2" deep .063 aluminum with MAP paint finish.
 Installation: Mount letters 1" from backer panel using 1" aluminum spacers with MAP painted finish. Attach display flush to wall surface using 1/2" dia. expandable fasteners.
 Customer to provide one (1) 20amp, 120v sign circuit to the display.

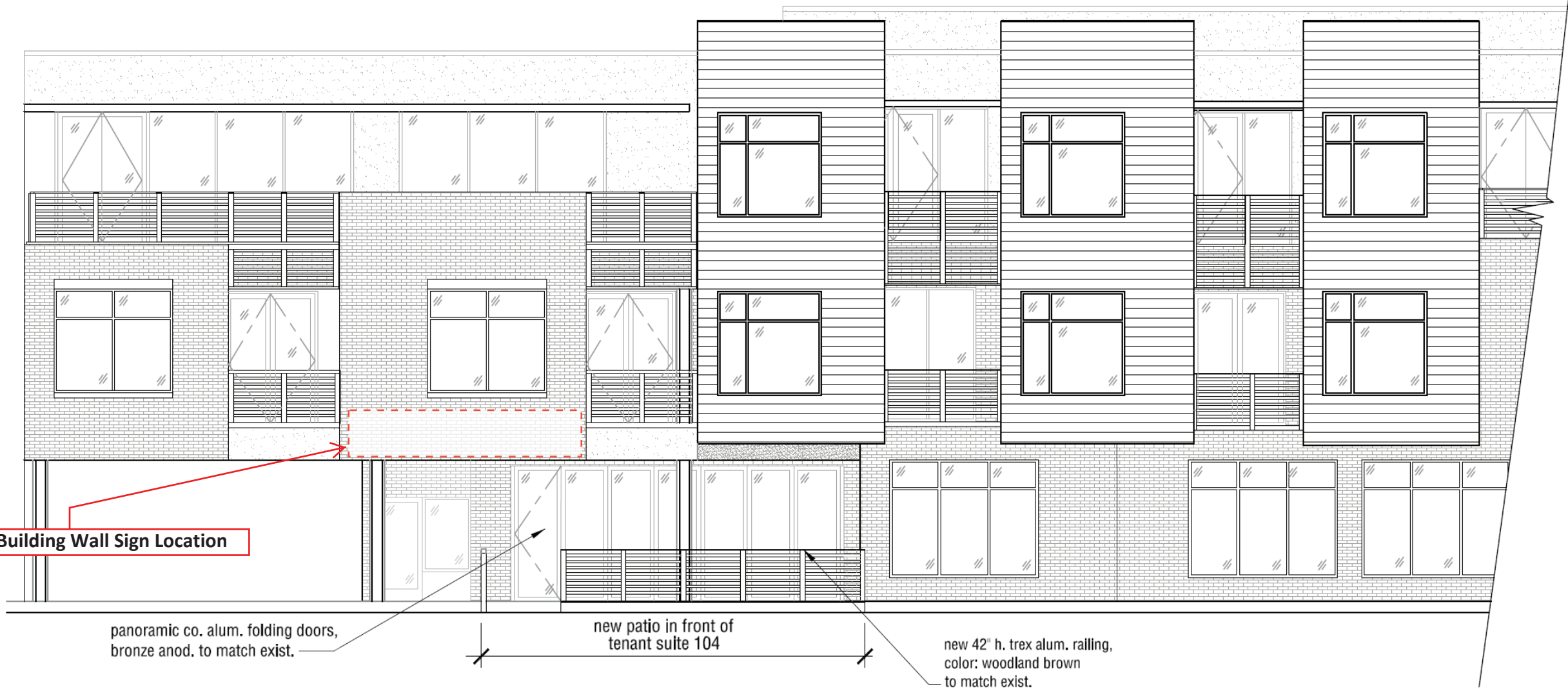


Installation Detail
LED Halo-Illuminated RPC Letter

SCALE: 1 1/2" = 1'-0"



East Elevation View



Suite 104 Building Wall Sign Location

panoramic co. alum. folding doors, bronze anod. to match exist.

new patio in front of tenant suite 104

new 42" h. trex alum. railing, color: woodland brown to match exist.

South Elevation View & Suite 104 Sign Location

2d

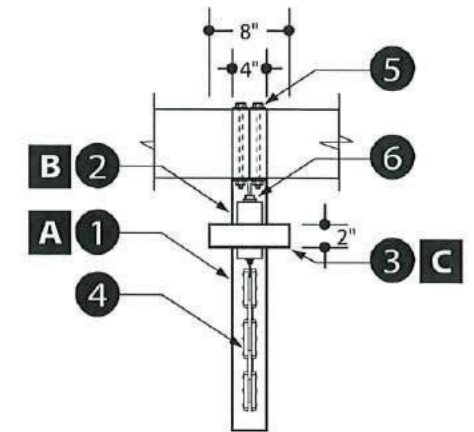
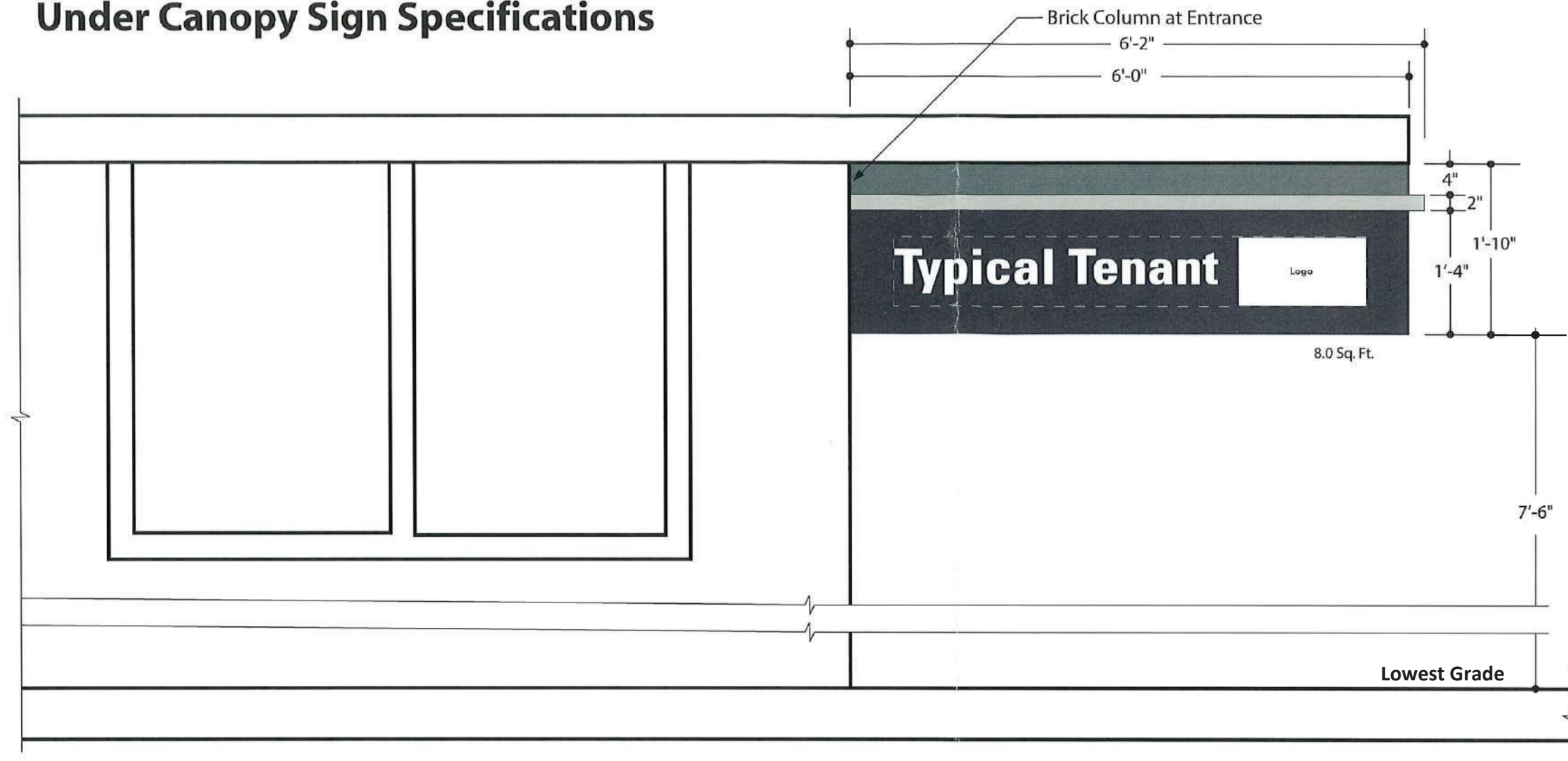
Elevation View

Scale: NTS



South Elevation View

Under Canopy Sign Specifications



Section View

Scale: 3/4" = 1'-0"

South Building Elevation

Scale: 3/4" = 1'-0"

3

Under Canopy Sign - LED Illuminated D/F Channel Cabinet with Removable Tenant Panel

- 1 **Cabinet:** D/F 3"x1 1/2"x3/16" wide channel with removable face panels.
Removable Face Panel: .125 aluminum with waterjet-cut graphics; paint finish.
Letter Backing: 3/16" Acrylic Plexiglas w/ 1/2" thick clear acrylic push-through Plexiglas. Overlay face of letter using 3M vinyl film per corporate colors.
- 2 **Top Band:** .125 aluminum; paint finish.
- 3 **Divider Bar:** 2" x 2" x 1/8" aluminum; paint finish.

- 4 **Illumination:** ILT-2x2-W Quad LED modules wired to Low-Voltage UL power supplies located inside the cabinet.
- 5 **Installation:** Mount display flush to brick column at entrance. Attach to under-side of the canopy frame using four (4) 3/8" dia. thru-bolt fasteners.
- 6 **Electrical Power Supply:** Customer to provide one (1) 20amp, 120v sign circuit to the display.

Color Key

- A Matthews - MP 26077 Dark Bronze
- B Matthews - MP 25843 Victorian Teal
- C Matthews - MP 30136 Brushed Aluminum

EXAMPLE

Under Canopy - Tenant Display

Manufacture two (2) 1'-4" x 6'-0" internally illuminated D/F under-canopy suspended sign display.

Mounting Collar: 4" x 6'-0" .125 removable panel with internal aluminum frame. Paint MAP - To match the building.

Divider Bar: 2" x 2" x 3/6" aluminum frame. Paint MAP - MP 30136 Brushed Aluminum.

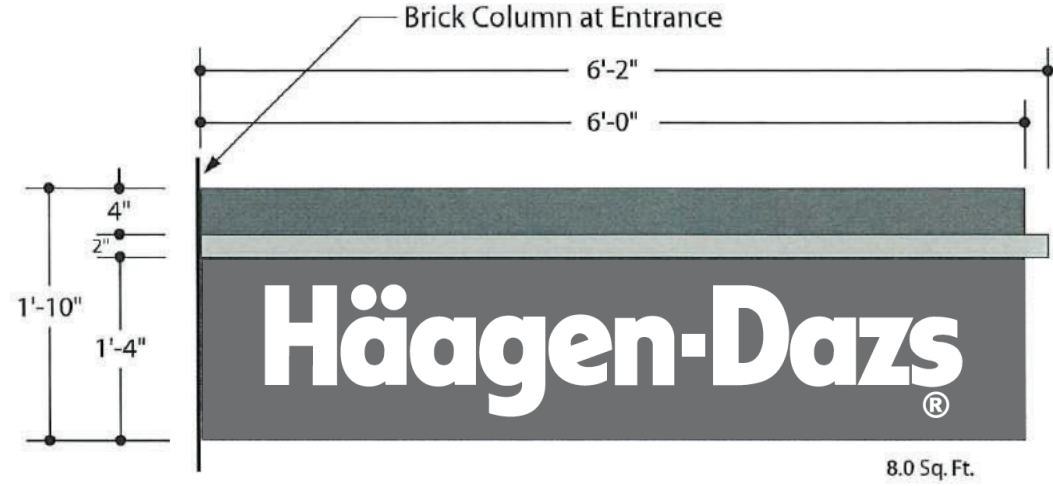
Tenant Panel: 1'-4" x 6'-0" .125 removable face panel with internal aluminum frame. Paint MAP - MP 26077 Dark Bronze.

Waterjet-cut graphics and back with 1/2" thick Clear acrylic push-through Plexiglas. Overlay face of letter using 3M vinyl film to allow for corporate colors, letter styles and logos.

Illumination: White LED modules wired to Low-Voltage UL labeled power supplies located inside the cabinet.

Installation: Mount display flush to brick column at entrance. Attach to under-side of the canopy frame using four (4) 3/8" dia. thru-bolt fasteners.

Customer to provide one (1) 20amp, 120v sign circuit to the display.



3a Elevation View
Scale: 3/4" = 1'-0"



Section View
Scale: 3/4" = 1'-0"



South Elevation
Scale: 3/32" = 1'-0"



East Elevation
Scale: 3/32" = 1'-0"

EXAMPLE

Under Canopy - Tenant Display

Manufacture two (2) 1'-4" x 6'-0" internally illuminated D/F under-canopy suspended sign display.

Mounting Collar: 4" x 6'-0" .125 removable panel with internal aluminum frame. Paint MAP - To match the building.

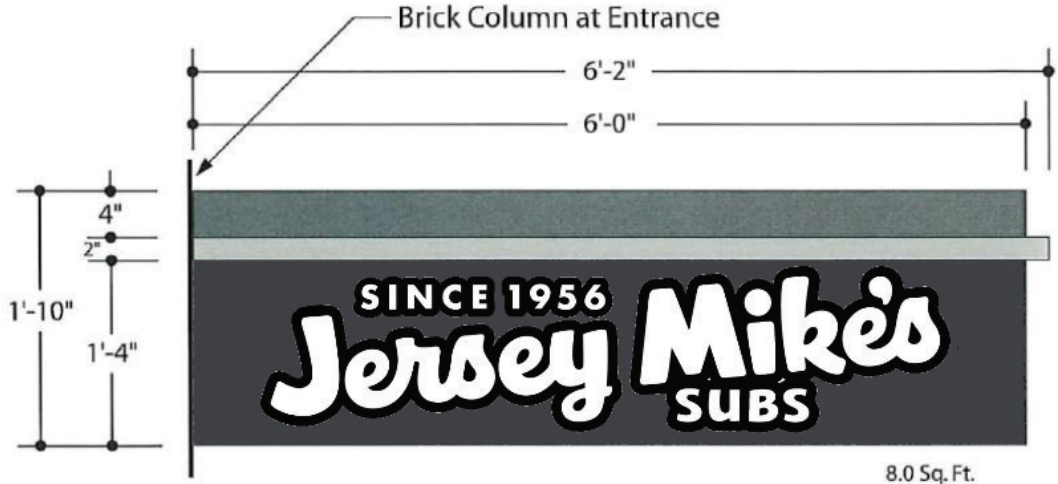
Divider Bar: 2" x 2" x 3/6" aluminum frame. Paint MAP - MP 30136 Brushed Aluminum.

Tenant Panel: 1'-4" x 6'-0" .125 removable face panel with internal aluminum frame. Paint MAP - MP 26077 Dark Bronze. Waterjet-cut graphics and back with 1/2" thick Clear acrylic push-through Plexiglas. Overlay face of letter using 3M vinyl film to allow for corporate colors, letter styles and logos.

Illumination: White LED modules wired to Low-Voltage UL labeled power supplies located inside the cabinet.

Installation: Mount display flush to brick column at entrance. Attach to under-side of the canopy frame using four (4) 3/8" dia. thru-bolt fasteners.

Customer to provide one (1) 20amp, 120v sign circuit to the display.



3b Elevation View
Scale: 3/4" = 1'-0"



Section View
Scale: 3/4" = 1'-0"



South Elevation
Scale: 3/32" = 1'-0"



East Elevation
Scale: 3/32" = 1'-0"

Under Canopy - Tenant Display

Manufacture two (2) 1'-4" x 6'-0" internally illuminated D/F under-canopy suspended sign display.

Mounting Collar: 4" x 6'-0" .125 removable panel with internal aluminum frame. Paint MAP - To match the building.

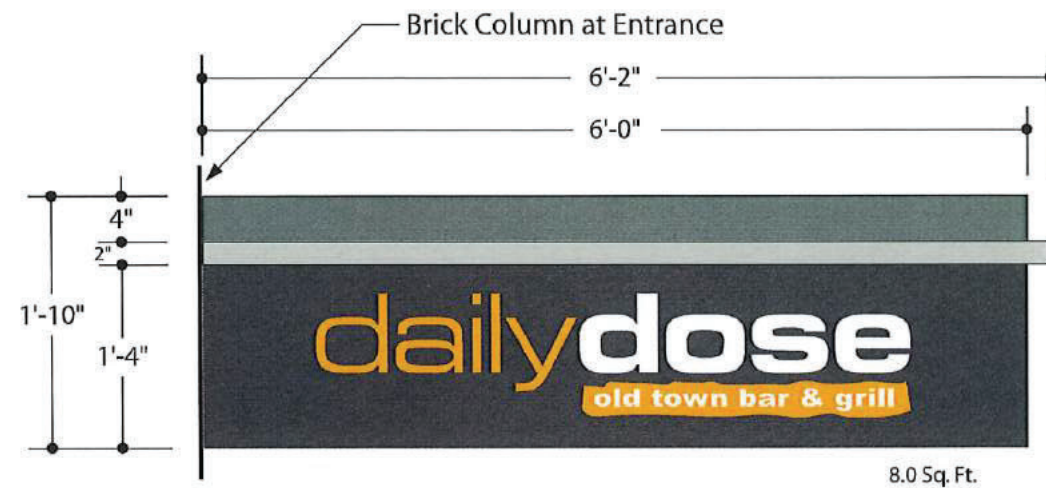
Divider Bar: 2" x 2" x 3/6" aluminum frame. Paint MAP - MP 30136 Brushed Aluminum.

Tenant Panel: 1'-4" x 6'-0" .125 removable face panel with internal aluminum frame. Paint MAP - MP 26077 Dark Bronze. Waterjet-cut graphics and back with 1/2" thick Clear acrylic push-through Plexiglas. Overlay face of letter using 3M vinyl film to allow for corporate colors, letter styles and logos.

Illumination: White LED modules wired to Low-Voltage UL labeled power supplies located inside the cabinet.

Installation: Mount display flush to brick column at entrance. Attach to under-side of the canopy frame using four (4) 3/8" dia. thru-bolt fasteners.

Customer to provide one (1) 20amp, 120v sign circuit to the display.



3c Elevation View
Scale: 3/4" = 1'-0"



Section View
Scale: 3/4" = 1'-0"



South Elevation
Scale: 3/32" = 1'-0"



East Elevation
Scale: 3/32" = 1'-0"

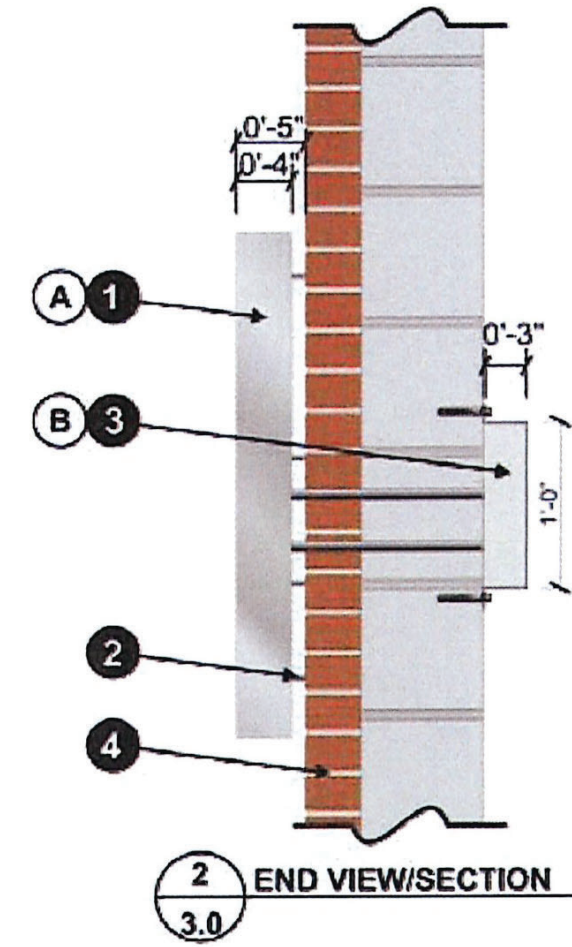
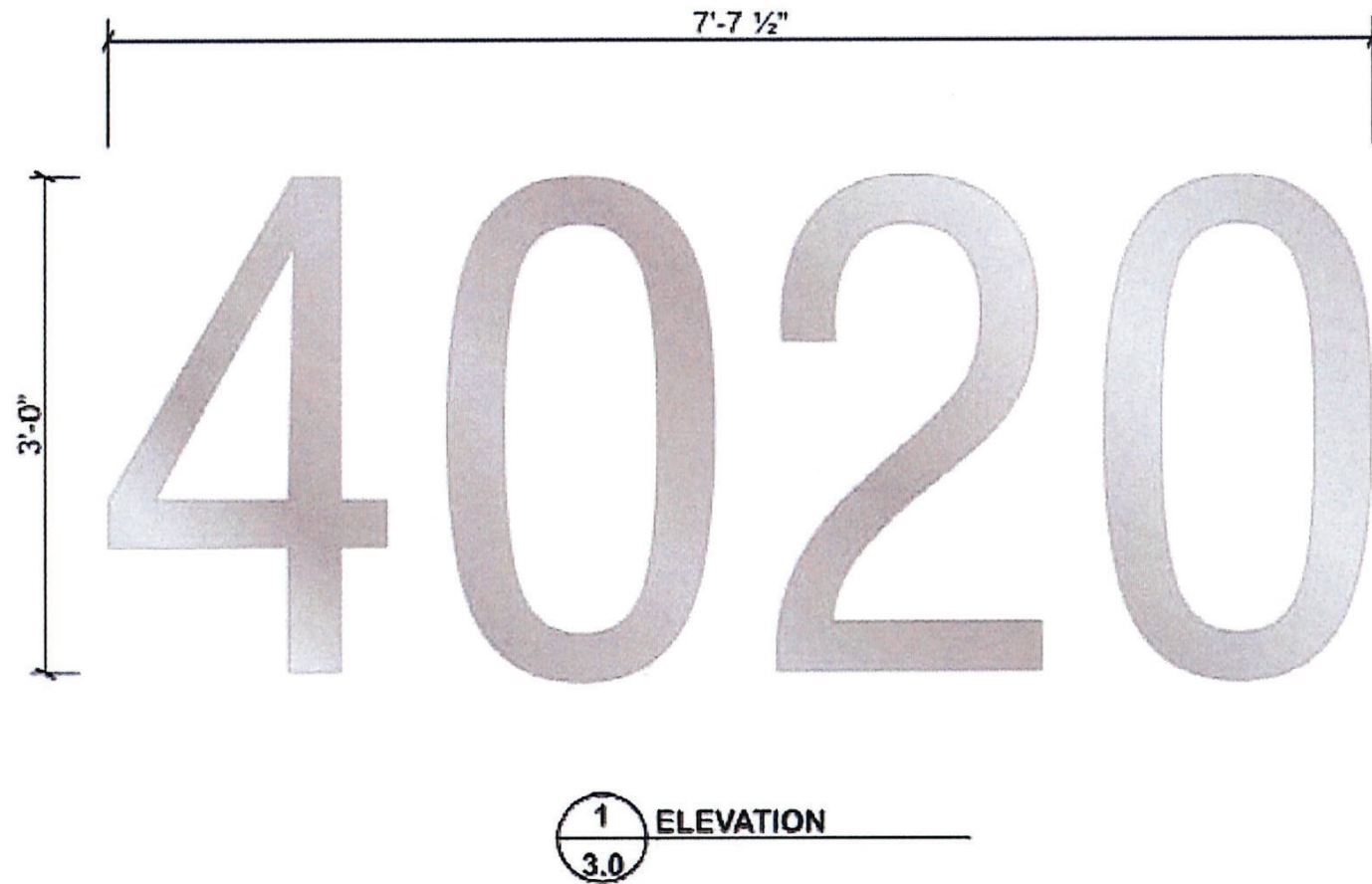
Center Identification Signs

This type of sign is intended to be used as a means of identification for project itself (not for tenants). In addition to meeting the following requirements, these signs must be consistent with the specifications shown on **Pages 21 & 22** of this sign criteria.

1. The overall size of these signs must be consistent with the specification drawings as shown on **Page 21 and Page 22**.
2. Signs are to be fabricated as reverse-illuminated pan channel letters. Cabinet signs of any kind are not allowed.
3. The letters are to be remotely wired with a concealed and weather-proof box to house secondary wiring and power supplies.
4. Letters are to be illuminated with 6500K white LEDs.
5. Faces and returns are to be painted to match specifications shown on following two pages.



Center Identification Sign Specifications (Address Numerals)



134 S/F HALO ILLUM. REVERSE CHANNEL LETTERS

FABRICATE & INSTALL (1) REQUIRED

- ① **CHANNEL LETTER TYPE:** Halo-illuminated reverse channel letters
FACES: .125" Thk. routed alum. w/ paint finish. Weld/versilok faces to returns.
RETURNS: .040" Thk. prefinished dk. bronze aluminum (vfy.) without weep holes & paint finish
BACKS: .150" Thk. clear polycarb. w/ alum. angle clips around perimeter for return attachment.

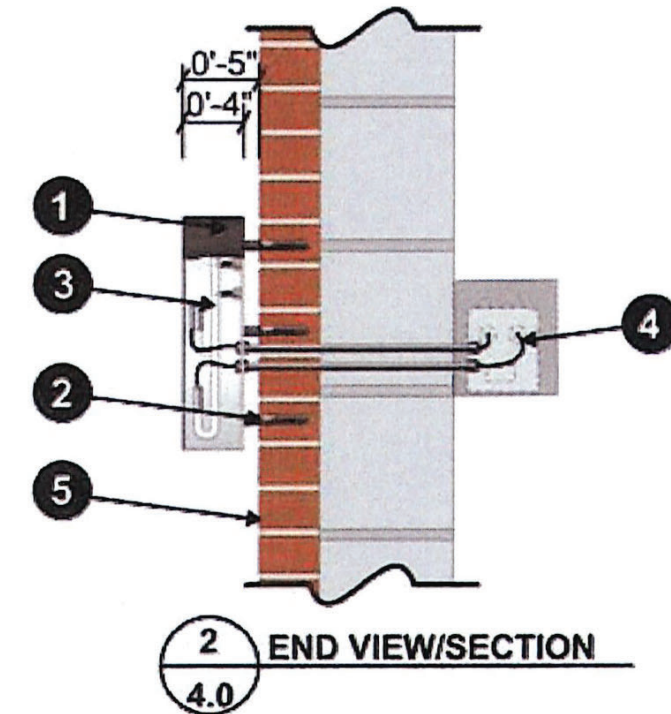
- ② **LETTER MOUNTING METHOD:** Stud mount to fascia spaced off 1" w/ alum. spacers (mill finish)
ILLUMINATION: SloanLED (vfy.) White LEDs mount to letter returns. LED size & LED qty. T.B.D.
NOTE: Increase qty. of LEDs from standard qty. to insure adequate illumination.
POWER SUPPLY: SloanLED "Self-Contained 20" (vfy.) LED power supplies housed inside custom transformer cover behind fascia.
PRIMARY ELECTRICAL: 120V - total sign amps T.B.D.
POWER LOCATION: Power to be provided at site by others (location T.B.D.)
SWITCH LOCATION: T.B.D.
SERVICE ACCESS: Remove letter faces (w/ attached returns) to service LEDs.

- ③ **TRANSFORMER COVER:** Break formed .063" thk. alum. (hem raw edges & rivet on ends)
MOUNTING METHOD: Use ABC III F retainers as angle clips for fascia attachment.
 Attach clips to fascia w/ 3/8" fasteners & masonry anchors (vfy.).
SERVICE ACCESS: Remove transformer cover from angle clips

- ④ **MOUNTING SURFACE:** Exterior brick fascia.

COLORS & FINISHES:	
A	Paint M.A.P. Brushed Alum. (nuance)
B	Paint M.A.P. to match fascia (vfy.). Color T.B.D.

Center Identification Sign Specifications (LOFT 4020 Sign)



134

S/F HALO ILLUM. REVERSE CHANNEL LETTERS

FABRICATE & INSTALL (1) REQUIRED

- 1 CHANNEL LETTER TYPE:** Halo-illuminated reverse channel letters
FACES: .125" Thk. routed alum. w/ paint finish. Weld/versilok faces to returns.
RETURNS: .040" Thk. prefinished dk. bronze aluminum (vfy.) without weep holes & paint finish
BACKS: .150" Thk. clear polycarb. w/ alum. angle clips around perimeter for return attachment.
- 2 MOUNTING METHOD:** Stud mount to fascia spaced off 1" w/ alum. spacers (paint color)
- 3 ILLUMINATION:** S/T 13mm Voltarc 6500K white neon tubing w/ dbl. backs & std. tube supports
- 4 TRANSFORMER:** 60 MA, 12060 standard or below (12,000v max.) housed inside standard transformer box behind fascia
PRIMARY ELECTRICAL: 120v - amps T.B.D.
POWER LOCATION: Power to be provided at site by others (location T.B.D.)
SWITCH LOCATION: Transformer box
SERVICE ACCESS: Remove letter faces (w/ attached returns) to service neon.
- 5 MOUNTING SURFACE:** Exterior brick fascia.

**10027 N. 12th Street
Phoenix, AZ 85020**

**(T)602.279.9268
(C)602.697.7665
(F)602.266.1289**



4-28-20

City of Scottsdale Planning Dept.
4020 N Scottsdale Rd Building
4020 N Scottsdale Rd
Scottsdale AZ

Narrative requesting Modification to existing MSP

The owner of the 4020 N Scottsdale Rd building is requesting that the city would allow a modification to the existing MSP to allow for new tenant signage to be added to the North tower along with placement of new sign envelopes for the signage along Scottsdale rd. All aspects of the signs will conform to the existing call outs and specs of the current MSP standards and will conform to all City of Scottsdale codes.

With Regards,

Shawn Britson
Identity Sign Group
602-279-9268-office
507-313-5758 cell
602-266-1289-fax
Shawn@identitysign.net



Planning and Development Services

7447 East Indian School Road
Scottsdale, Arizona 85251

April 29, 2020

Shawn Britson
Identity Sign Group Inc
10027 N 12Th St
Phoenix, AZ 850201713

RE: Administrative Completeness Determination
CASE: 41-DR-2007#4 – 4020 Building Master Sign Program Amendment

Dear Shawn,

It has been determined that your Development Application 41-DR-2007#4, 4020 Building Master Sign Program Amendment, is administratively complete. Your Development Application is being reviewed under the City's Enhanced Application Review Methodology. I will begin the substantive review of the application material after the \$95.00 Master Sign Program Amendment fee payment has been received. Please submit payment for this application by either:

- 1) Submitting payment through the online interface for the Digital Case Submittal process utilizing the Key Code 80S91:
<https://eservices.scottsdaleaz.gov/bldgresources/cases/digitallogin/41-DR-2007#4?KeyCode=80S91>

OR

- 2) If you need to make other arrangements for payment please contact the One Stop Shop at OneStopShopStaff@ScottsdaleAZ.gov.

Upon completion of my review of the application material, I will inform you in writing or electronically either: 1) the steps necessary to submit additional information; or, 2) I will issue an electronic determination pertaining to this application. If you have any questions, or need further assistance please contact me at 480-312-7828 or at achi@ScottsdaleAZ.gov.

Sincerely,

Andrew Chi
Planner

C: Old Town Retail, LLC
C: Case File

Chi, Andrew

From: Shawn IdentitySign <shawn@identitysign.net>
Sent: Wednesday, May 06, 2020 8:46 AM
To: Chi, Andrew
Subject: 41-DR-2007#4 - City of Scottsdale Case Payment

From: planninginfo@scottsdaleaz.gov [<mailto:planninginfo@scottsdaleaz.gov>]
Sent: Wednesday, May 06, 2020 8:43 AM
To: Shawn IdentitySign <shawn@identitysign.net>
Cc: juenger@scottsdaleaz.gov
Subject: City of Scottsdale Case Payment



Your case payment has been received and is being processed.

Case Number 41-DR-2007#4

Project Name 4020 BUILDING MASTER SIGN PROGRAM AMENDMENT

Location 4020 N SCOTTSDALE RD

Card Name SCOTT MEHLHOFF

Card Type AMERICANEXPRESS

Card Number 1002

Total Amount \$95.00

Any questions call 480-312-7767.

Thank You!



© 2020 City of Scottsdale. All Rights Reserved.

Master Sign Program Application

Application & Submittal Requirements



_____ - PA - _____ Project Number	_____ - DR - _____ Case Number	_____ Staff Coordinator
--------------------------------------	-----------------------------------	----------------------------

Please check one of the following: New Master Sign Program Amendment to Existing Master Sign Program

Project Name:

Address:

Zip Code:

Zoning District:

Parcel Number(s):

Request:

Associated Case(s):

Owner:

Agent/Applicant:

Company:

Company:

Address:

Address:

Phone:

Phone:

E-mail:

E-mail:

Submittal Requirements: Submit three (3) copies of the materials requested below, or digitally submit one (1) PDF copy of the materials requested below.

- | | |
|--|--|
| <input type="checkbox"/> Completed Application (this form)
<input type="checkbox"/> Application Fee (subject to change every July): \$ _____
<input type="checkbox"/> Context Aerial and/or Site Location Map
<input type="checkbox"/> Narrative describing nature of request or scope of work
<input type="checkbox"/> Property Owner Approval Letter
<input type="checkbox"/> Homeowners/Property Owners Association Approval Letter (if applicable)
<input type="checkbox"/> Sign Criteria Written Regulations
<input type="checkbox"/> Context Photos | <input type="checkbox"/> Site Plan indicating extent and location of all signs and existing buildings; provide dimensions for all freestanding signs.
<input type="checkbox"/> Floor Plan Layout of existing building or buildings. The plan shall show all tenant suites within a development.
<input type="checkbox"/> Elevation Plan(s) of all buildings with sign locations indicated; rendering of all freestanding signs.
<input type="checkbox"/> Other:

 |
|--|--|

Please indicate in the checkbox below the requested review methodology (see the descriptions on Page 2)

Enhanced Application Review: I hereby authorize the City of Scottsdale to review this application utilizing the Enhanced Application Review methodology.

Standard Application Review: I hereby authorize the City of Scottsdale to review this application utilizing the Standard Application Review methodology.

Owner Signature

Shawn Britson

Agent/Applicant Signature

Official Use Only

Submittal Date:

Development Application No.:

Planning and Development Services

7447 East Indian School Road Suite 105, Scottsdale, Arizona 85251 • www.ScottsdaleAZ.gov

Request for Site Visits and/or Inspections Development Application (Case Submittals)



This request concerns all property identified in the development application.

Pre-application No: _____-PA-_____

Project Name: _____

Project Address: _____

STATEMENT OF AUTHORITY:

1. I am the owner of the property, or I am the duly and lawfully appointed agent of the property and have the authority from the owner to sign this request on the owner's behalf. If the land has more than one owner, then I am the agent for all owners, and the word "owner" refer to them all.
2. I have the authority from the owner to act for the owner before the City of Scottsdale regarding any and all development application regulatory or related matter of every description involving all property identified in the development application.

STATEMENT OF REQUEST FOR SITE VISITS AND/OR INSPECTIONS

1. I hereby request that the City of Scottsdale's staff conduct site visits and/or inspections of the property identified in the development application in order to efficiently process the application.
2. I understand that even though I have requested the City of Scottsdale's staff conduct site visits and/or inspections, city staff may determine that a site visit and/or an inspection is not necessary, and may opt not to perform the site visit and/or an inspection.

Property owner/Property owner's agent: _____

Print Name

Shawn Britson

Signature

City Use Only:

Submittal Date: _____ Case Number: _____

Planning and Development Services

7447 E Indian School Road, Suite 105, Scottsdale, AZ 85251 ♦ www.ScottsdaleAZ.gov