

VICINITY MAP

- ARCHITECTURAL SITE PLAN NOTES:**
- RE: CIVIL DRAWINGS FOR PARKING LOT, CURBS, SIDEWALKS, ETC.
 - RE: LANDSCAPE DRAWINGS FOR SPECIAL CONCRETE FEATURES, GARDENS, PATIOS, FREESTANDING SHADE STRUCTURES, ETC.
 - PLACE JOB CONSTRUCTION SIGN NEAR CONSTRUCTION ENTRANCE INDICATED ON CIVIL PLANS
 - EMBED THREE (3) 1" REBAR PER EACH 36" OF DOOR @ ALL EXTERIOR DOORS.
 - PROVIDE ELASTOMERIC CAULK AT JOINTS BETWEEN EXTERIOR WALLS/FOUNDATIONS AND SIDEWALKS/PAVING
 - COORDINATE GC'S JOB TRAILER AND OWNER'S SALES TRAILER WITH CONSTRUCTION SEQUENCING, PAVING, UTILITIES, ETC.
 - RE: IRRIGATION PLANS FOR SLEEVE LOCATIONS
 - PAINT ALL EXPOSED EXTERIOR PVC, PIPE, UTILITIES, ETC. COLOR TBD

1" = 30'-0" SITE PLAN NOTES

OPEN SPACE LEGEND

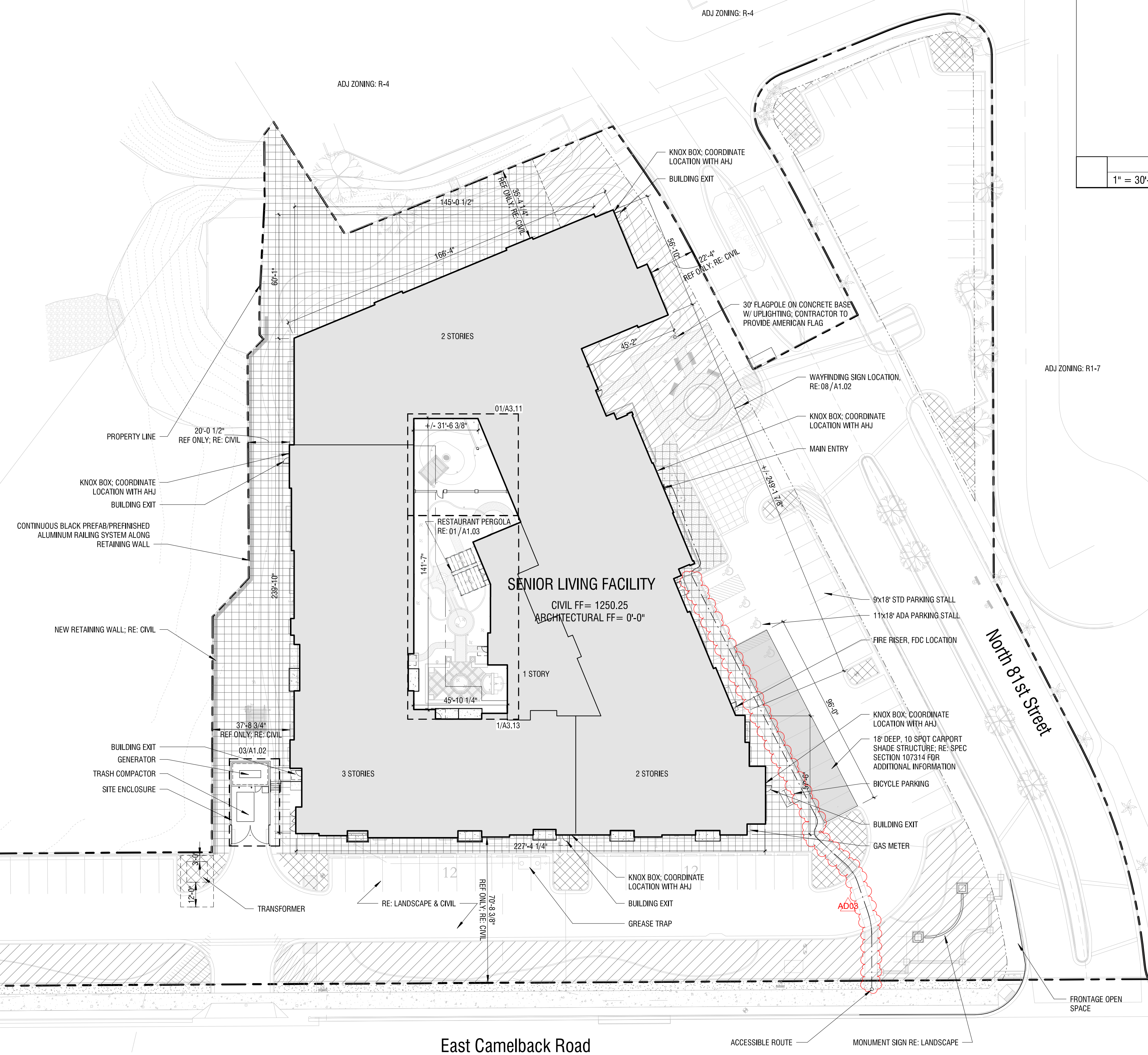
- FRONTAGE OPEN SPACE
- OTHER OPEN SPACE
- PARKING LOT LANDSCAPING
- R.O.W. LANDSCAPING

OPEN SPACE CALCULATIONS

141,112 S.F. NET LOT AREA
 REQUIRED OPEN SPACE: 24% x NET LOT AREA = 33,867 S.F.
 38,488 S.F. PROVIDED
 REQUIRED FRONTAGE OPEN SPACE: 50% x REQ'D OPEN SPACE = 16,933 S.F.
 19,680 S.F. PROVIDED

SITE & BUILDING DATA

ZONING: C-O, O-S
 PARCEL: 173-29-007J
 LOT SIZE: 170,092 SF
 NET: 141,112 SF
 BUILDING FOOTPRINT: 45,642 SF
 MAX HEIGHT: 40 FT
 NUMBER OF BEDS: 111
 PARKING REQ'D: 111 BEDS * 0.7 = 78 SPOTS REQ'D
 PARKING PROVIDED: 105 SPOTS PROVIDED
 4 ACCESSIBLE
 4 REQ'D, 4 PROVIDED
 BIKE PARKING: 4 REQ'D, 4 PROVIDED
 SCOTTSDALE APPROVED CASE #: 8-DR-2019



7236-19-1
APPROVED
 FINAL PLANS PLANNING
 08/12/2020
 DATE APPROVED BY
 8-DR-2019



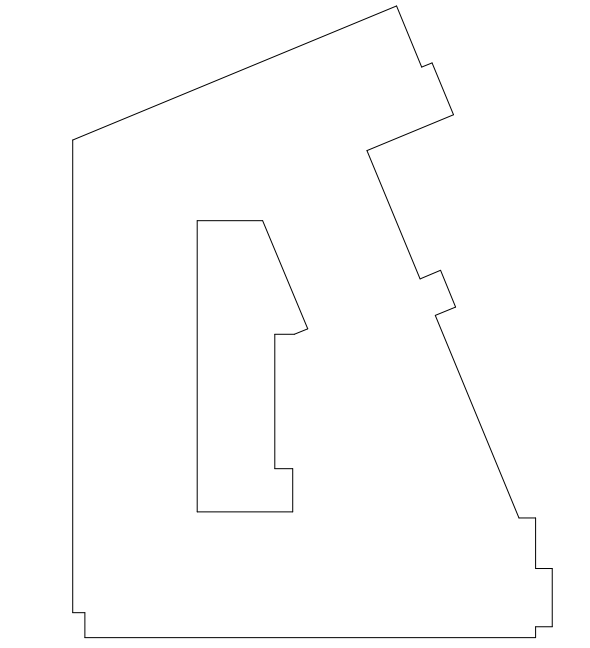
ARCHITECTURE & DESIGN
 600 Emerson Road Suite 401 · St. Louis · MO · 63141
 p:314 521 0123 · f:877 521 0122 · www.vesselarchitecture.com



MEP & STRUCTURAL ENGINEER
 SSC ENGINEERING

CIVIL ENGINEER
 SUSTAINABILITY ENGINEERING GROUP

LANDSCAPE ARCHITECT
 ALLEN KRACOWER & ASSOCIATES



Brian Van Winkle
 AZ LIC#: 59644 EXP: 03.21.2021

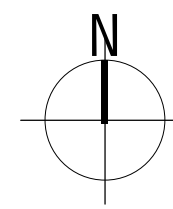
#	DATE	SUBMISSION
PM	10.25.2019	PERMIT SET
AD02	2020.05.18	ADDENDUM 02
AD03	2020.07.17	ADDENDUM 03

THE PAVILION AT
 CAMELBACK
 8080 E. CAMELBACK RD
 SCOTTSDALE, ARIZONA 85251

ARCHITECTURAL
 SITE PLAN

As indicated

A1.01





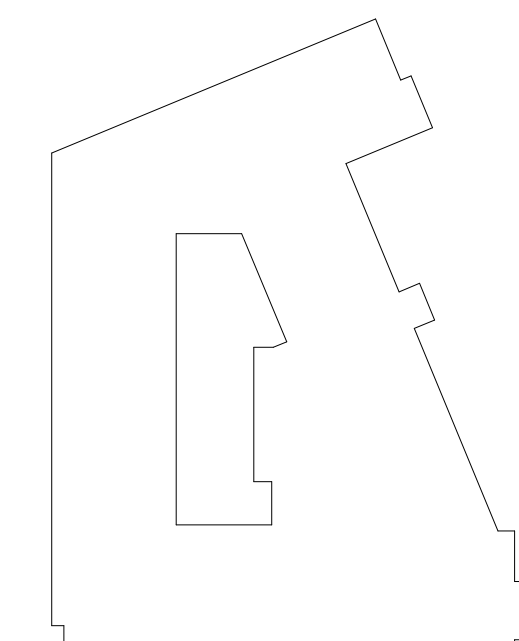
ARCHITECTURE & DESIGN
600 Emerson Road Suite 401 · St. Louis · MO · 63141
p:314 521 0123 · f:877 521 0122 · www.vesselarchitecture.com



MEP & STRUCTURAL ENGINEER
SSC ENGINEERING

CIVIL ENGINEER
SUSTAINABILITY ENGINEERING GROUP

LANDSCAPE ARCHITECT
ALLEN KRACOWER & ASSOCIATES



SEAL



Brian Van Winkle
AZ LIC#: 59644 EXP: 03.21.2021

#	DATE	SUBMISSION
PM	10.25.2019	PERMIT SET

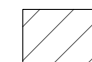
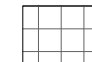


THE PAVILION AT
CAMELBACK
8080 E. CAMELBACK RD
SCOTTSDALE, ARIZONA 85251

OPEN SPACE PLAN

1" = 30'-0"

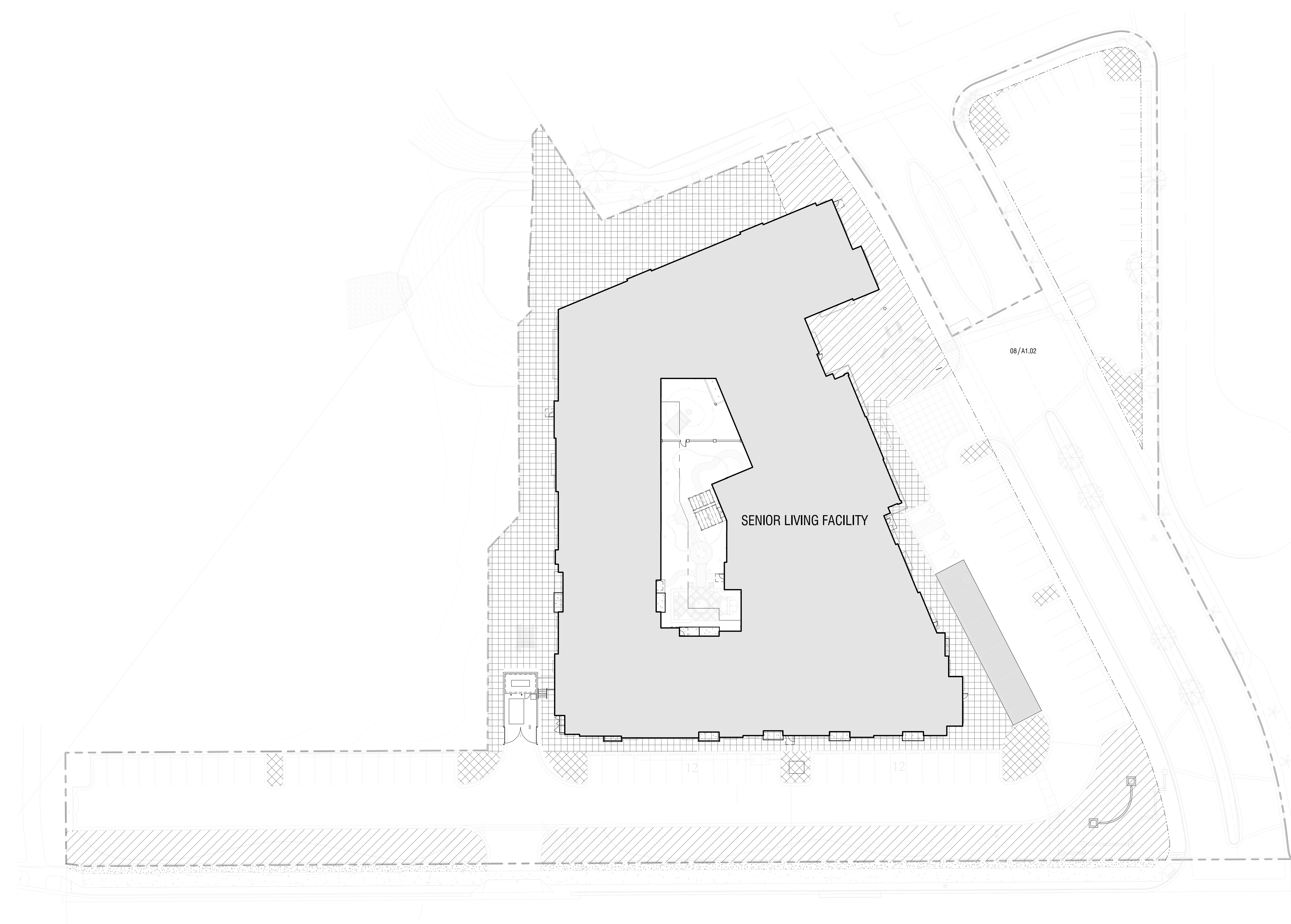
A1.04

OPEN SPACE LEGEND

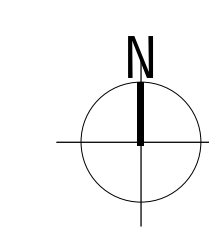
-  FRONTAGE OPEN SPACE
-  OTHER OPEN SPACE
-  PARKING LOT LANDSCAPING
-  R.O.W. LANDSCAPING

OPEN SPACE CALCULATIONS

141,112 S.F. NET LOT AREA
REQUIRED OPEN SPACE: 24% x NET LOT AREA = 33,867 S.F.
38,489 S.F. PROVIDED
REQUIRED FRONTAGE OPEN SPACE: 50% x REQD OPEN SPACE = 16,933 S.F.
19,690 S.F. PROVIDED



7236-19-1
APPROVED
FINAL PLANS PLANNING
08/12/2020
DATE APPROVED BY
8-DR-2019





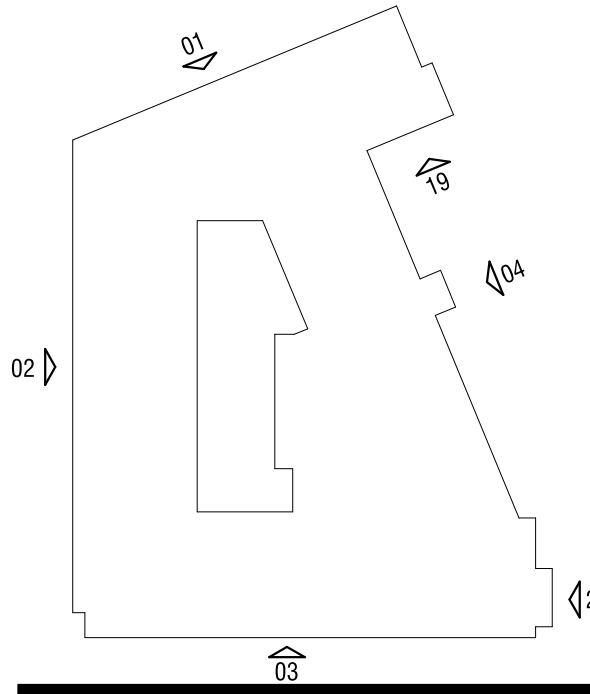
ARCHITECTURE & DESIGN
600 Emerson Road Suite 401 · St. Louis · MO · 63141
p:314 521 0123 · f:877 521 0122 · www.vesselarchitecture.com



MEP & STRUCTURAL ENGINEER
SSC ENGINEERING

CIVIL ENGINEER
SUSTAINABILITY ENGINEERING GROUP

LANDSCAPE ARCHITECT
ALLEN KRACOWER & ASSOCIATES



SEAL



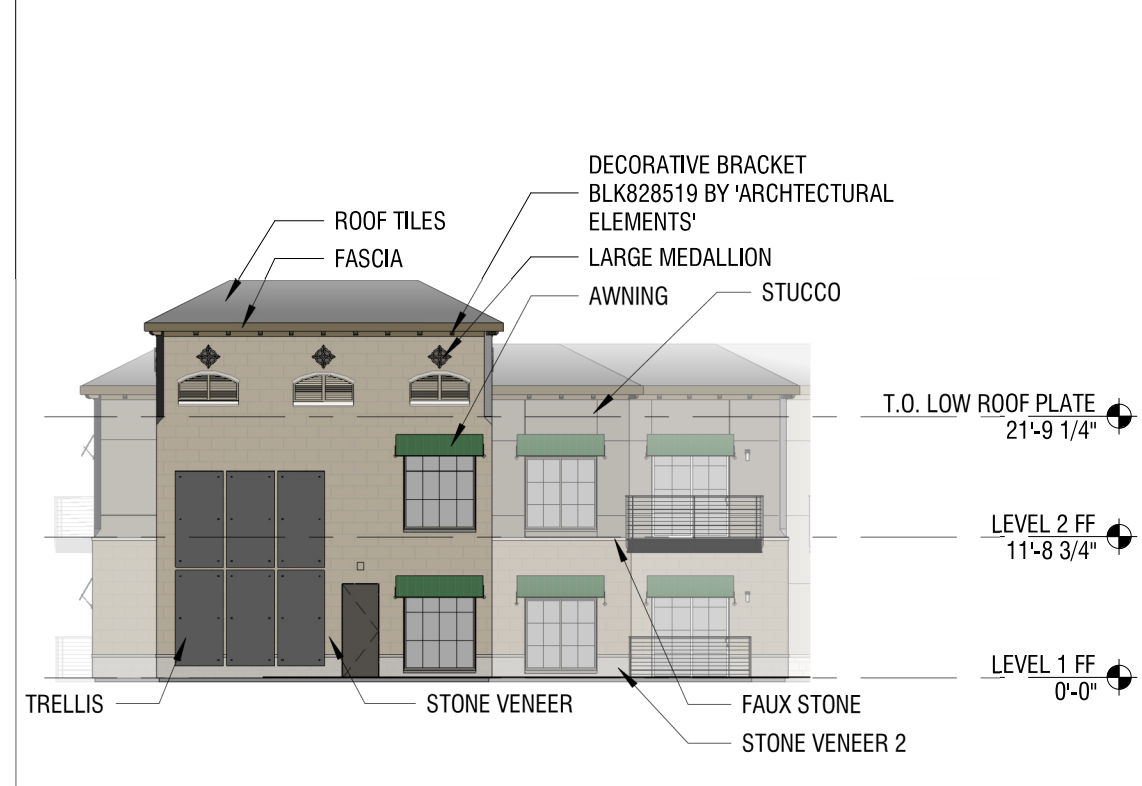
Brian Van Winkle
AZ LIC#: 59644 EXP: 03.21.2021

#	DATE	SUBMISSION
PM	10.25.2019	PERMIT SET
AD02	2020.05.18	ADDENDUM 02

THE PAVILION AT
CAMELBACK
8080 E. CAMELBACK RD
SCOTTSDALE, ARIZONA 85251

EXTERIOR
ELEVATIONS -
COLOR

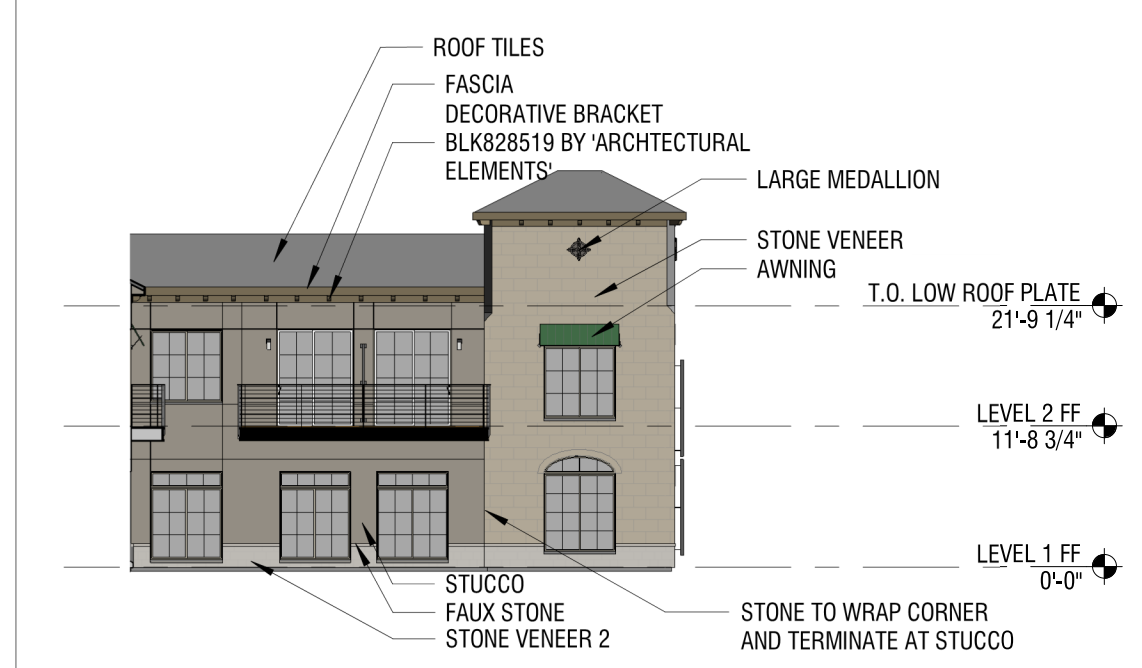
A4.02



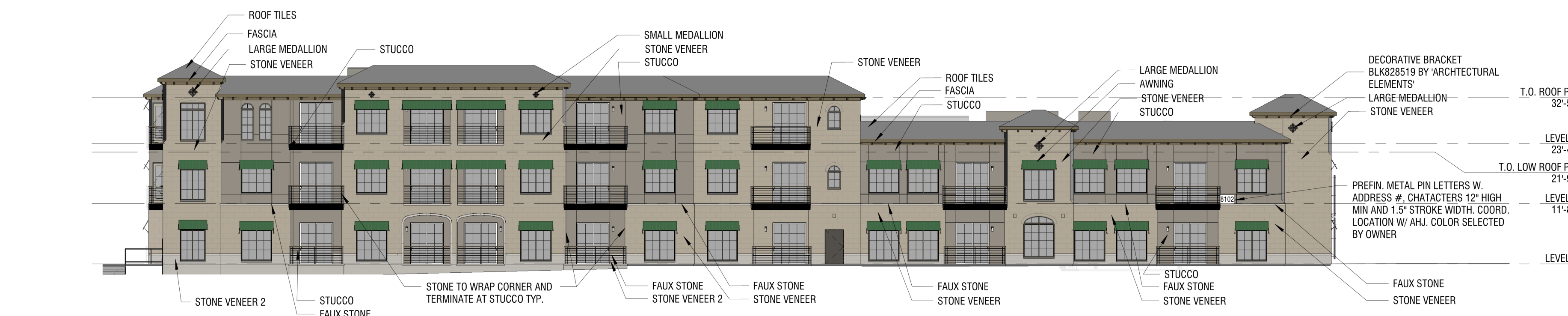
20 1/16" = 1'-0" EAST COLOR



04 1/16" = 1'-0" NORTHEAST COLOR



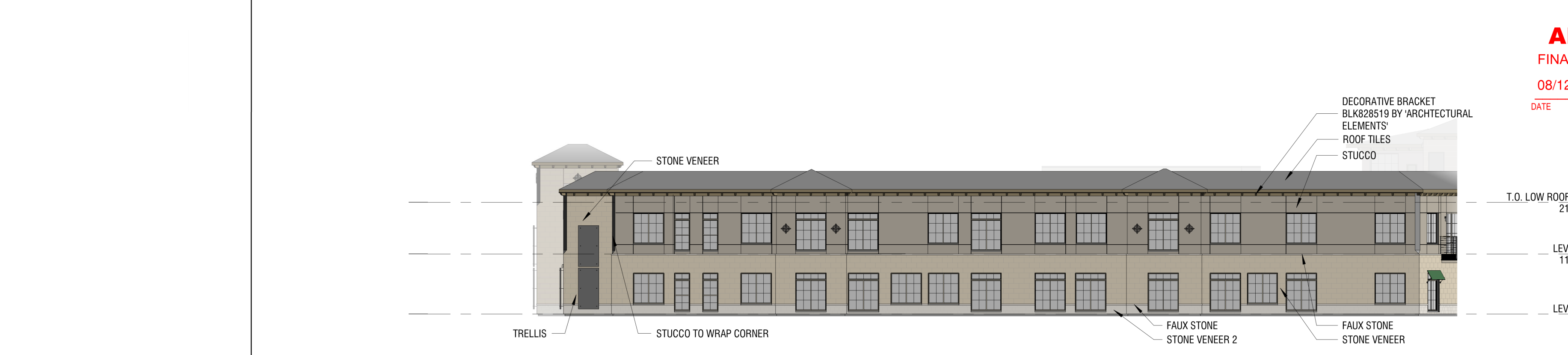
19 1/16" = 1'-0" FRONT - NORTH COLOR



03 1/16" = 1'-0" SOUTH COLOR



02 A1.02 1/16" = 1'-0" WEST COLOR



01 1/16" = 1'-0" NORTHWEST COLOR

7236-19-1
APPROVED
FINAL PLANS PLANNING
08/12/2020
DATE APPROVED BY
8-DR-2019



ARCHITECTURE & DESIGN

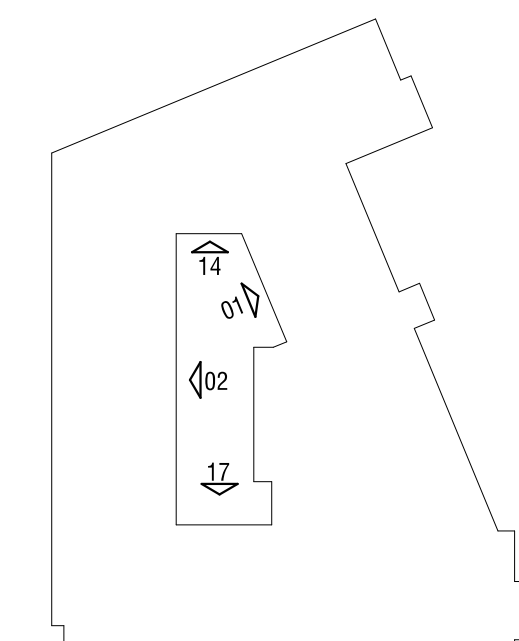
600 Emerson Road Suite 401, St. Louis, MO, 63141
p:314 521 0123, f:877 521 0122, www.vesselarchitecture.com



MEP & STRUCTURAL ENGINEER
SSC ENGINEERING

CIVIL ENGINEER
SUSTAINABILITY ENGINEERING GROUP

LANDSCAPE ARCHITECT
ALLEN KRACOWER & ASSOCIATES



SEAL



Brian Van Winkle
AZ LIC#: 59644 EXP: 03.21.2021

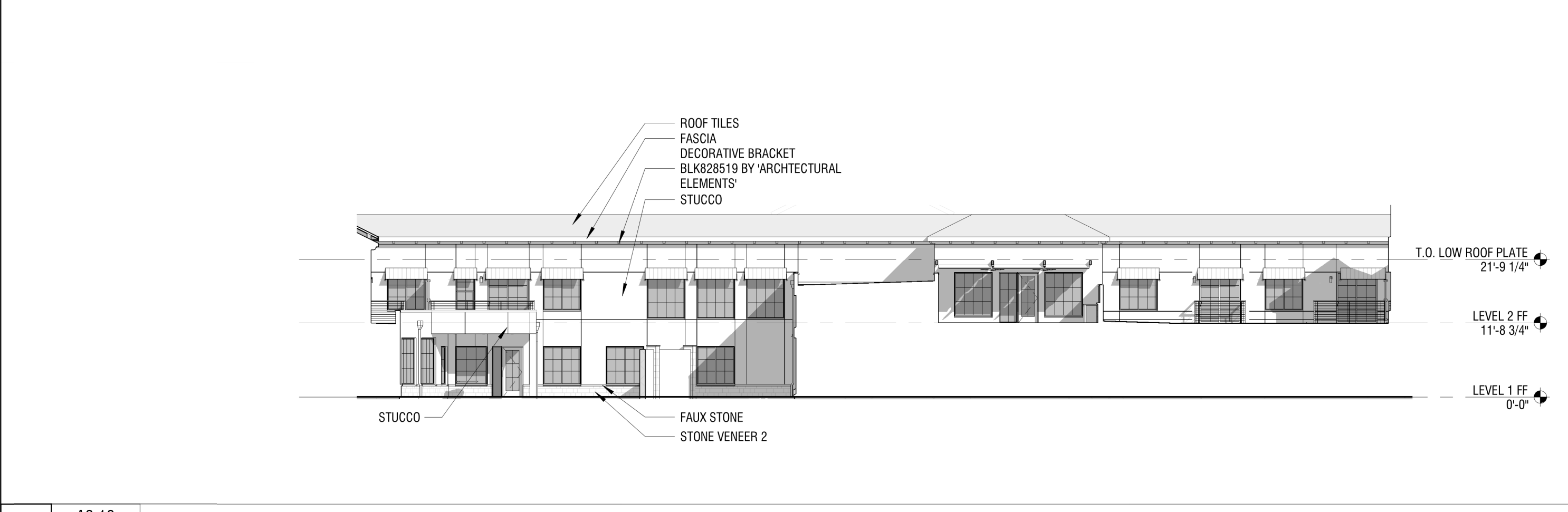
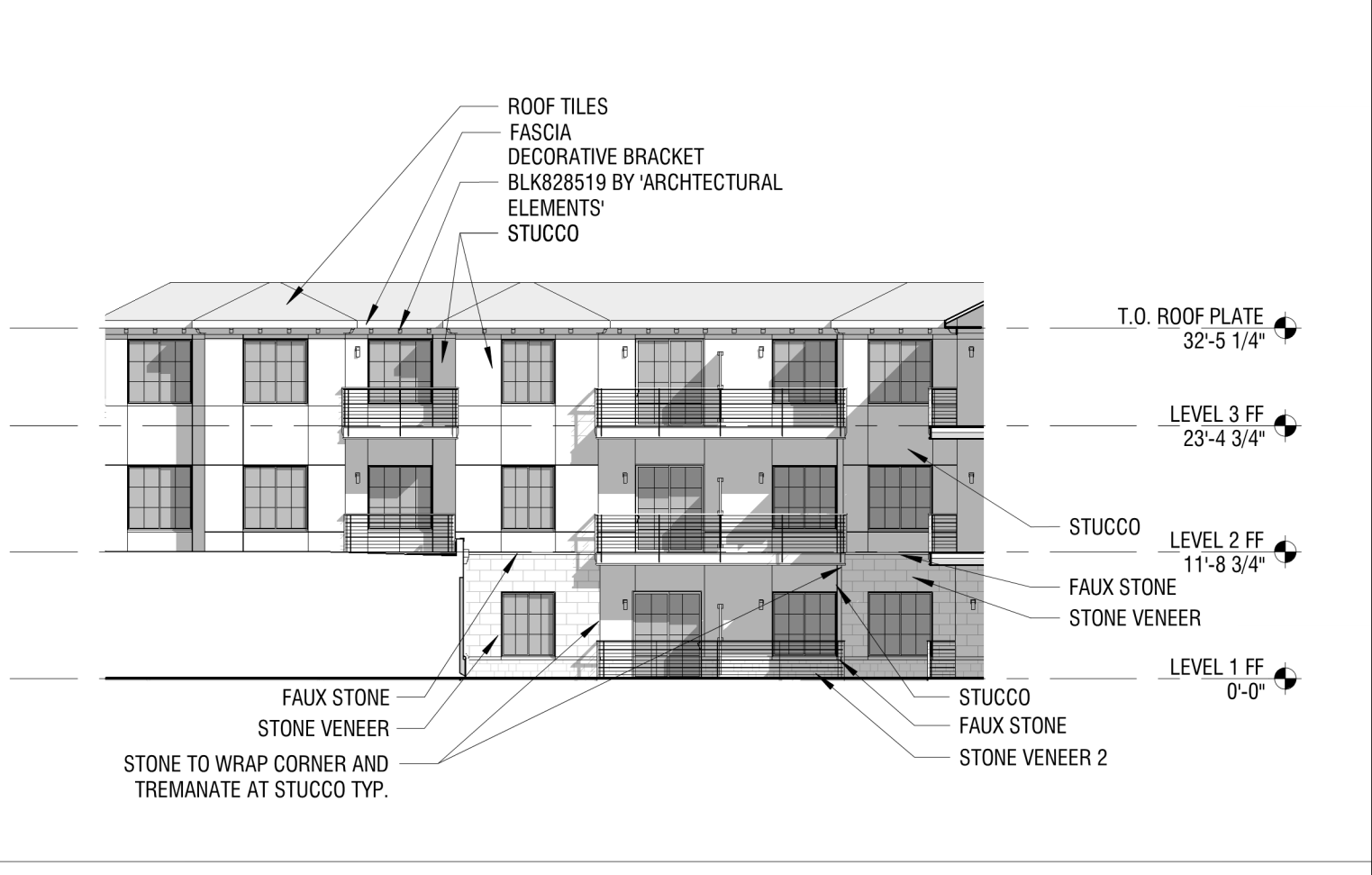
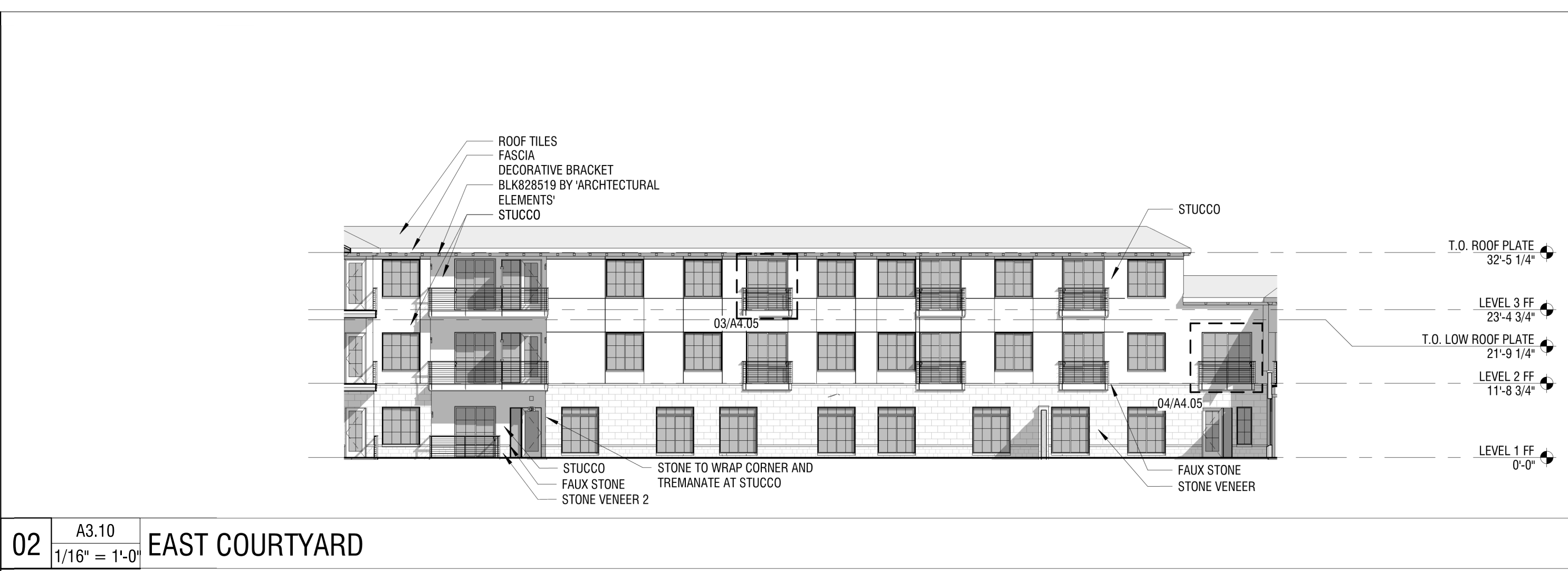
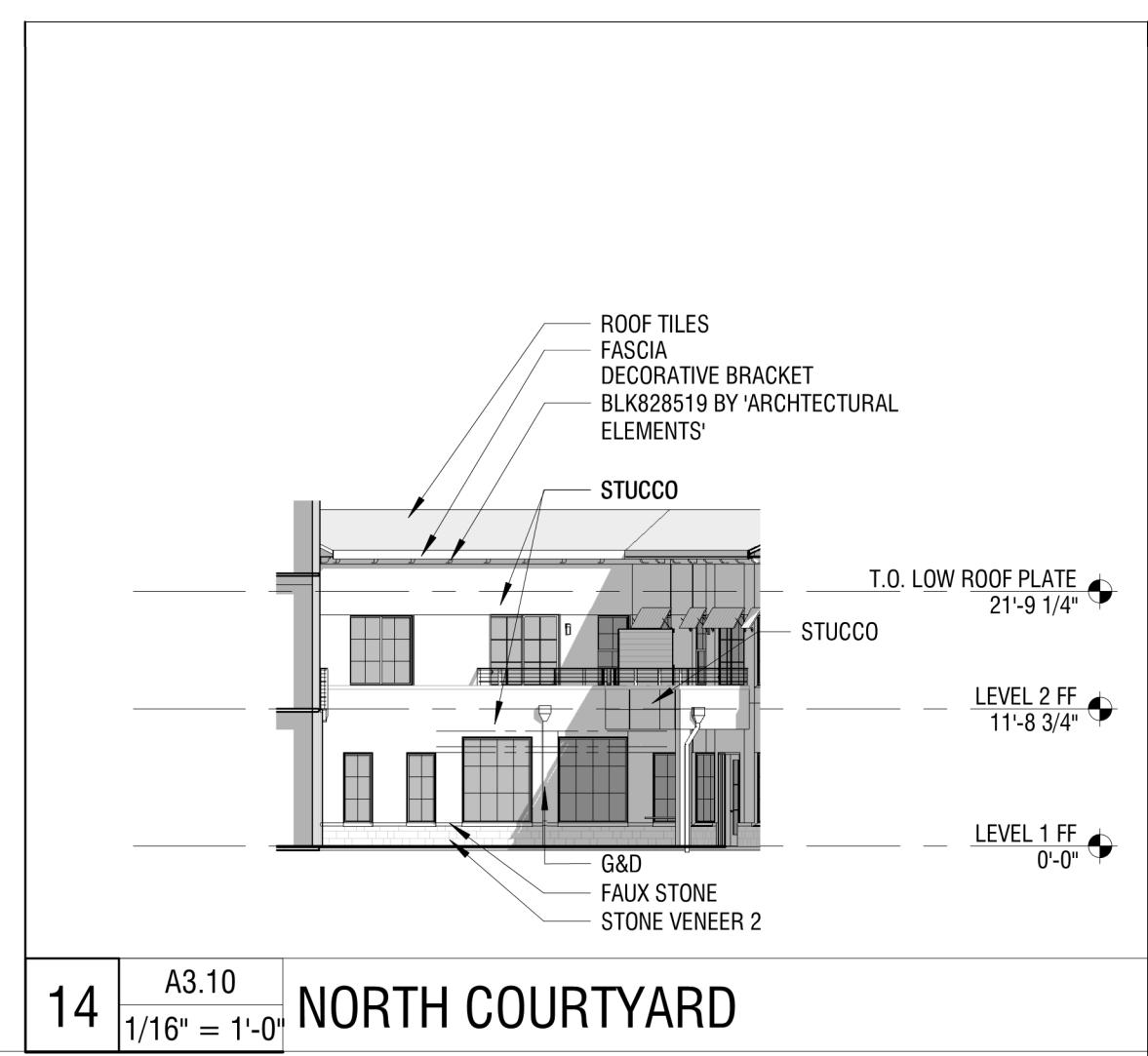
#	DATE	SUBMISSION
PM	10.25.2019	PERMIT SET
AD02	2020.05.18	ADDENDUM 02

THE PAVILION AT
CAMELBACK
8080 E. CAMELBACK RD
SCOTTSDALE, ARIZONA 85251

EXTERIOR
ELEVATIONS

7236-19-1
APPROVED
FINAL PLANS PLANNING
08/12/2020
DATE APPROVED BY
8-DR-2019

A4.03





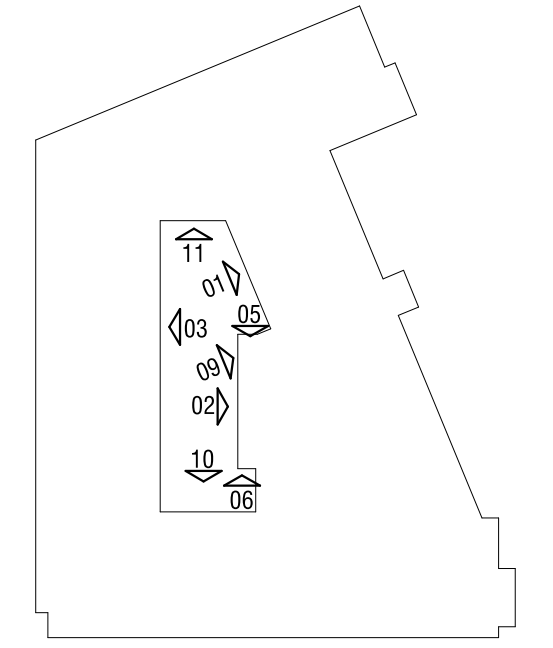
ARCHITECTURE & DESIGN
 600 Emerson Road Suite 401 · St. Louis · MO · 63141
 p:314 521 0123 · f:877 521 0122 · www.vesselarchitecture.com



MEP & STRUCTURAL ENGINEER
 SSC ENGINEERING

CIVIL ENGINEER
 SUSTAINABILITY ENGINEERING GROUP

LANDSCAPE ARCHITECT
 ALLEN KRACOWER & ASSOCIATES



SEAL



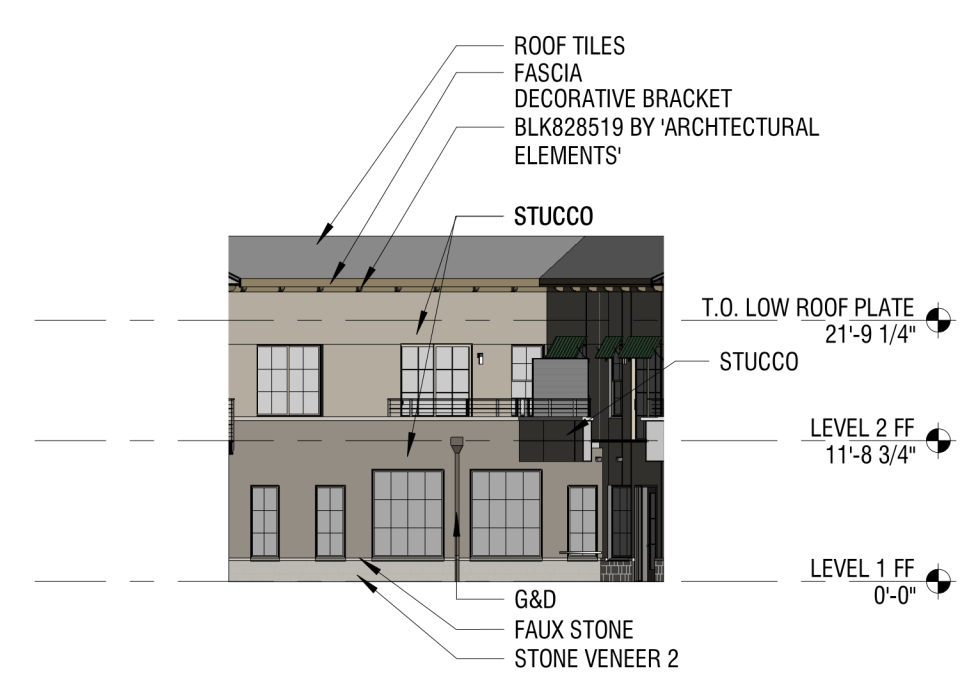
Brian Van Winkle
 AZ LIC#: 59644 EXP: 03.21.2021

#	DATE	SUBMISSION
PM	10.25.2019	PERMIT SET
AD02	2020.05.18	ADDENDUM 02

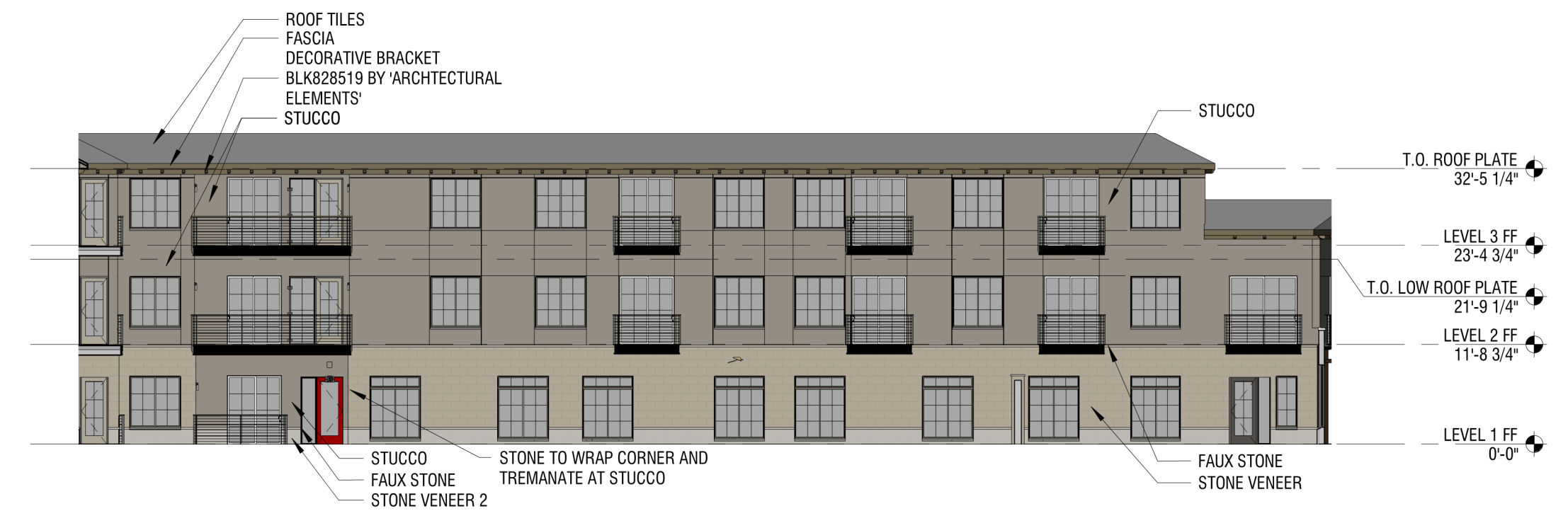
THE PAVILION AT
 CAMELBACK
 8080 E. CAMELBACK RD
 SCOTTSDALE, ARIZONA 85251

EXTERIOR
 ELEVATIONS -
 COLOR

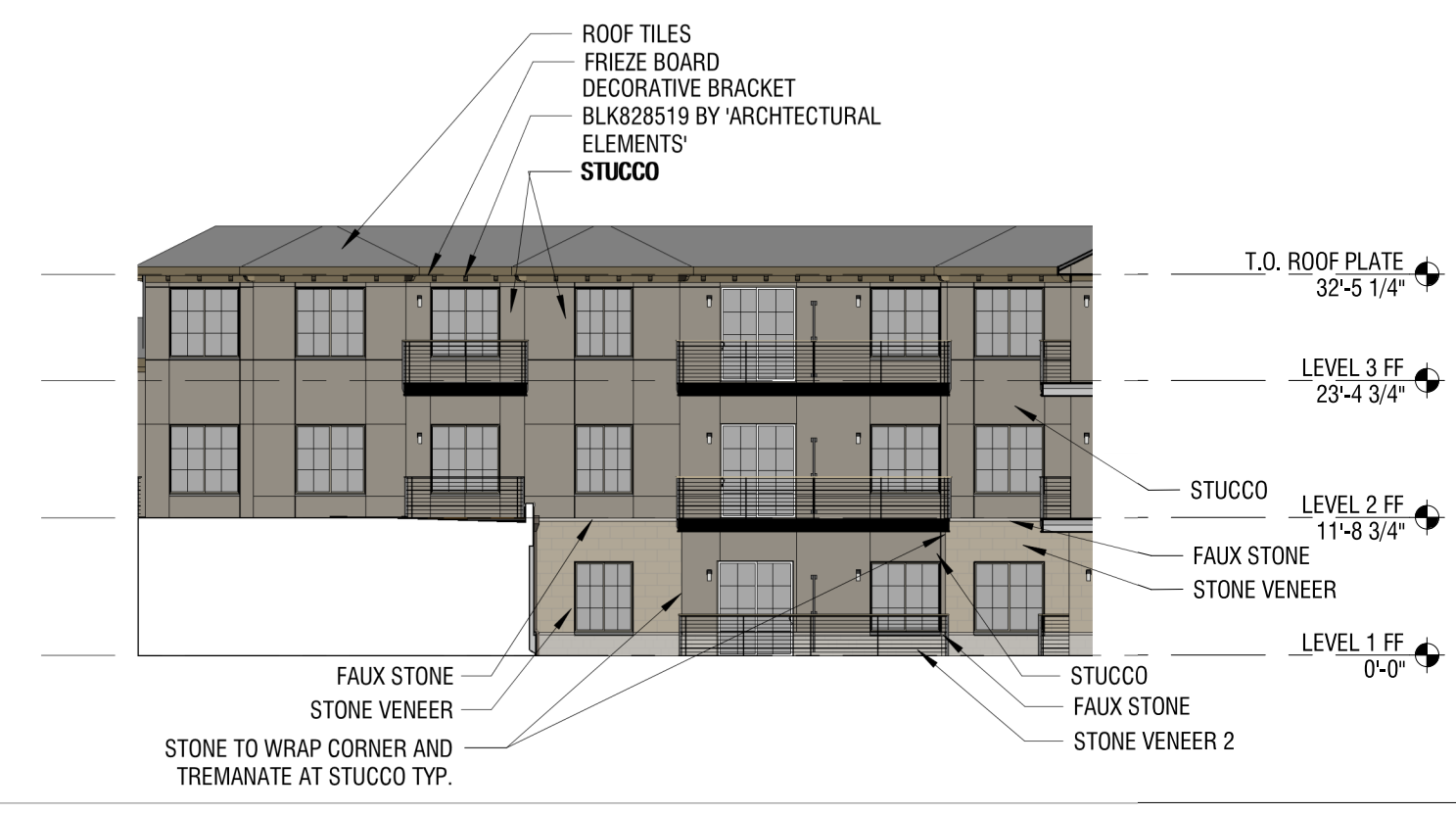
A4.04



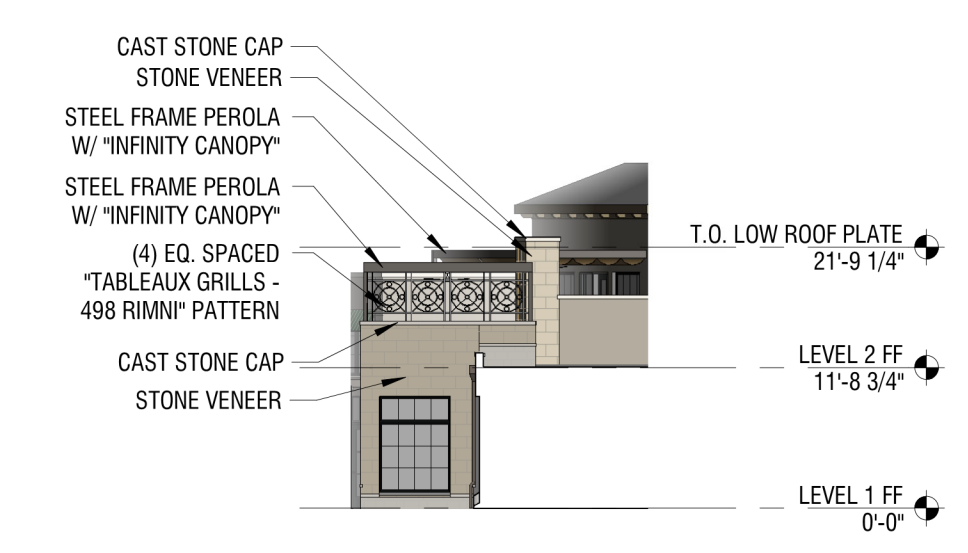
11 1/16" = 1'-0" NORTH COURTYARD COLOR



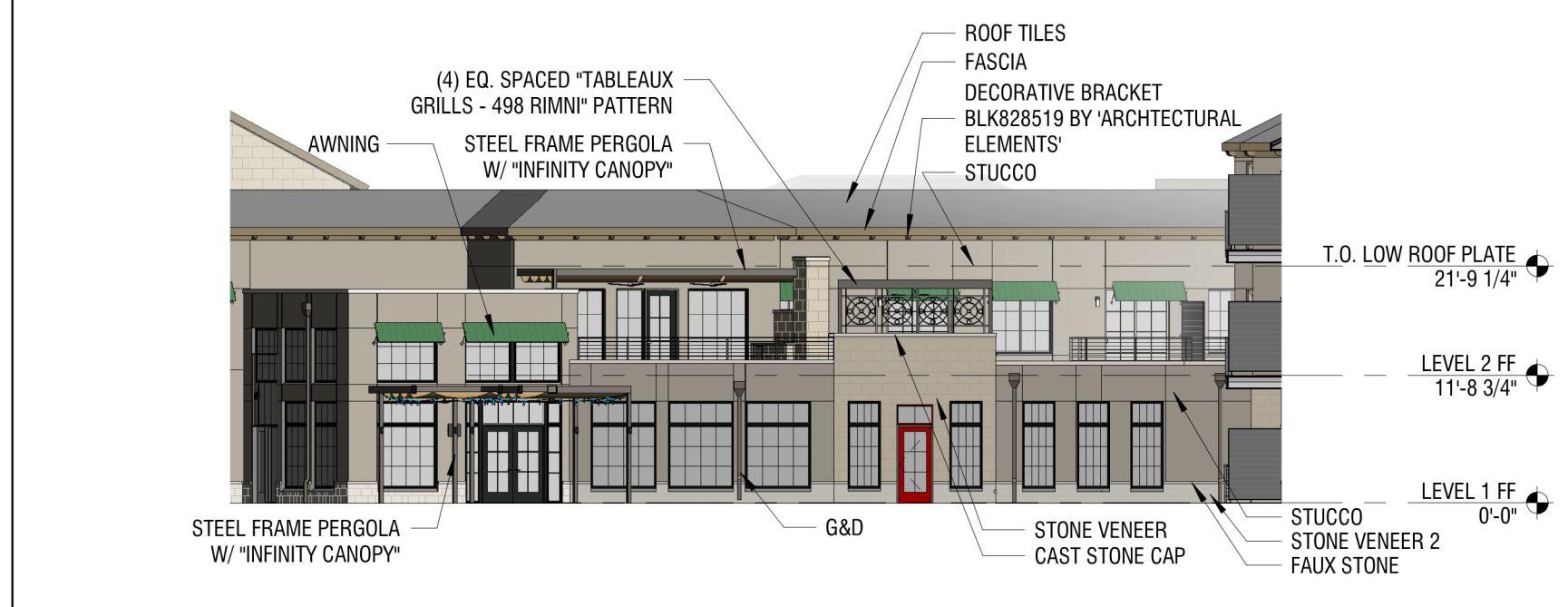
03 1/16" = 1'-0" EAST COURTYARD COLOR



10 1/16" = 1'-0" SOUTH COURTYARD COLOR



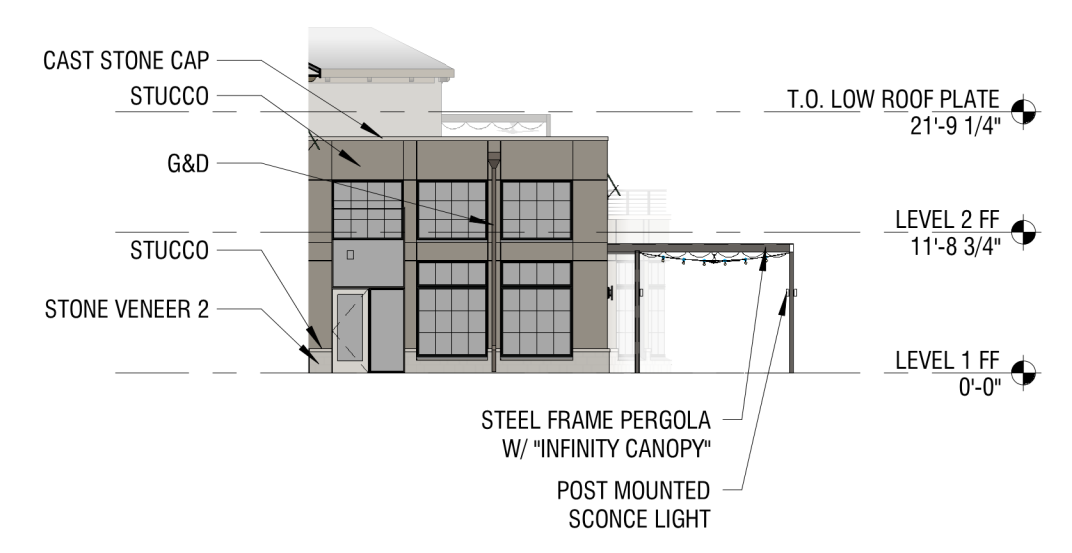
06 1/16" = 1'-0" NORTH COURTYARD - REST. COLOR



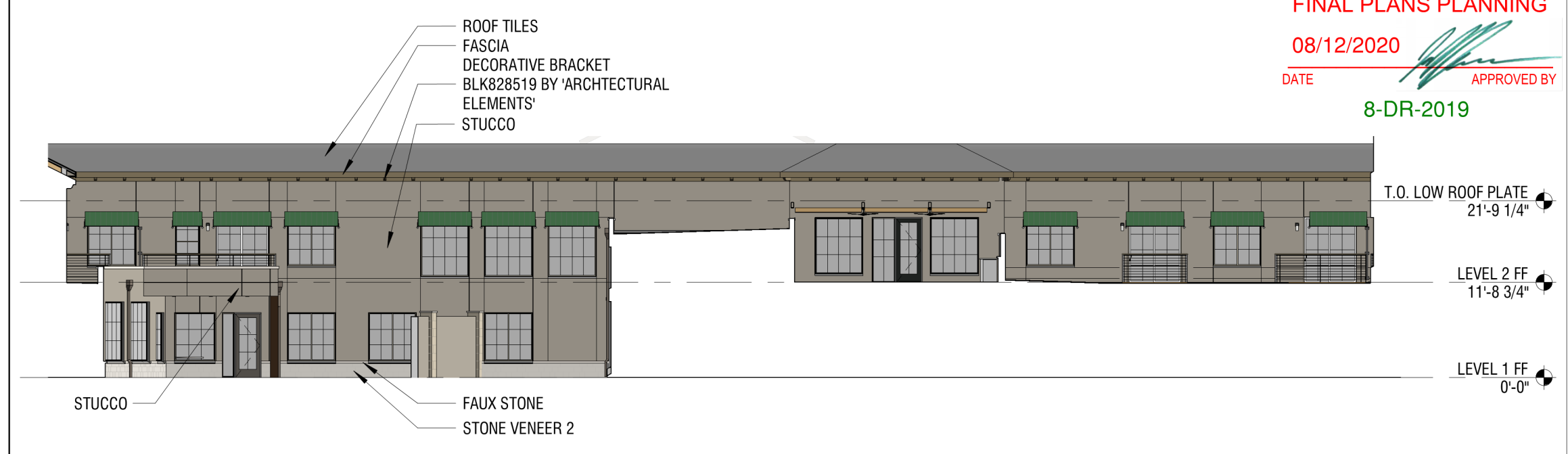
02 1/16" = 1'-0" WEST COURTYARD COLOR



09 1/16" = 1'-0" NW COURTYARD - REST. COLOR



05 1/16" = 1'-0" SOUTHWEST COURTYARD COLOR



01 1/16" = 1'-0" NORTHWEST COURTYARD COLOR

7236-19-1
APPROVED
 FINAL PLANS PLANNING
 08/12/2020
 DATE APPROVED BY
 8-DR-2019