



Simulations

Photos

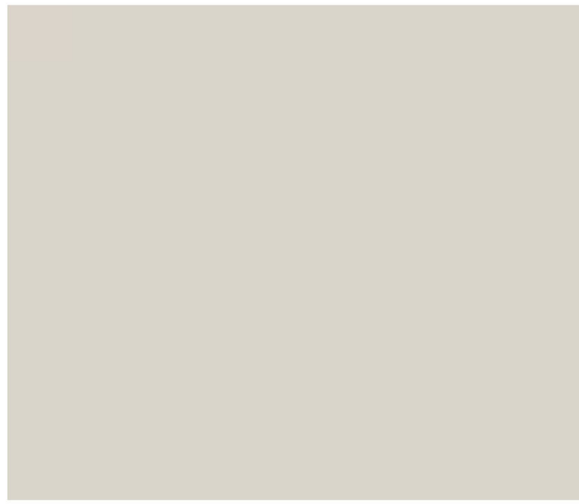
All Graphics (no plans)

Color Boards

Color Drawdowns

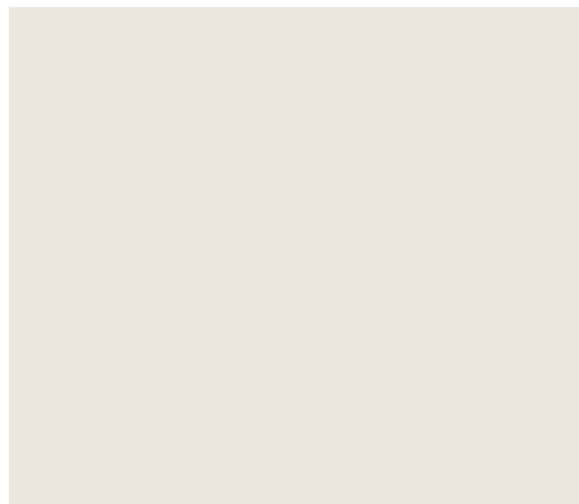
Exterior Building Color

Material Samples



WF1 - STUCCO

MFG: ANY
TYPE: EXTERIOR LIME PLASTER STUCCO
COLOR: DUNN EDWARDS
#DEC774 "SHADY"
FINISH: MEDIUM SAND FINISH
LRV: 63



WF2 - STUCCO

MFG: ANY
TYPE: EXTERIOR LIME PLASTER STUCCO
COLOR: DUNN EDWARDS
#DE6232 "ABSTRACT WHITE"
FINISH: MEDIUM SAND FINISH
LRV: 75



BK1 - BRICK ACCENT

MFG: GENERAL SHALE BRICK
TYPE: BRICK VENEER
COLOR: STAINED DUNN EDWARDS
#DET630 "RENWICK BROWN"
FINISH: STAINED AGED FINISH
LRV: 14



WD1 - WOOD BEAMS

MFG: LOCAL WOOD SUPPLIER
TYPE: DOUG-FIR W/ EXTERIOR STAIN
COLOR: ANTIQUE OAK
FINISH: SEMI TRANSPARENT MATTE STAIN AND SEAL
LRV: 25



WD2 - WOOD SIDING

MFG: LOCAL WOOD SUPPLIER
TYPE: 6" CEDAR PLANK SIDING W/ EXTERIOR STAIN
COLOR: WEATHERED GREY OAK
FINISH: SEMI TRANSPARENT MATTE STAIN AND SEAL
LRV: 50



MT1 - METAL

MFG: ARC STEEL (OR SIMILAR)
TYPE: STEEL
COLOR: HOT ROLLED BLACKENED STEEL
FINISH: MATTE SEALED
LRV: NATURAL MATERIAL COLOR VARIES



MT2 - METAL

MFG: ARC STEEL (OR SIMILAR)
TYPE: STEEL
COLOR: POWDERCOAT: DUNN EDWARDS
#DEW380 - "WHITE"
FINISH: MATTE FINISH
LRV: 93



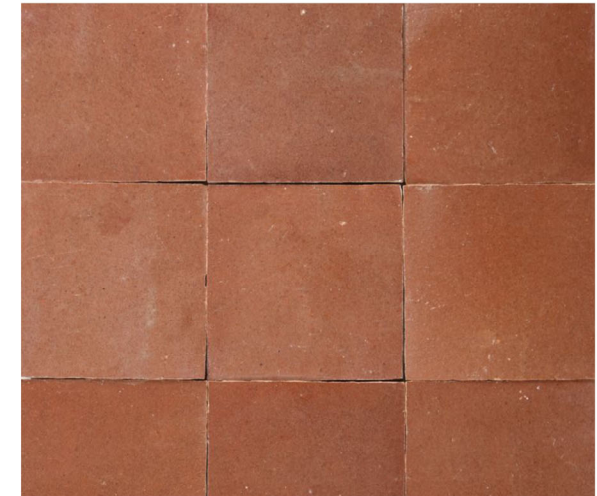
MT3 - METAL

MFG: ARC STEEL (OR SIMILAR)
TYPE: STEEL
COLOR: PREWEATHERED "RUST"
FINISH: MATTE SEALED
LRV: NATURAL MATERIAL COLOR VARIES



**C01A - PRECAST CONCRETE
C01B - CONCRETE PLASTER**

MFG: CONCRETE DESIGNS INC
COLOR: GS60
FINISH: ACID ETCH FINISH
LRV: 60



TL1 - TILE

MFG: CLE TILE
TYPE: ZELLIGE - 4" SQUARE TILE
COLOR: PALACE RED
LRV: 28

**54-DR-2019
APPROVED**

FINAL PLANS PLANNING

2/18/21

DATE

APPROVED BY



4440 SADDLEBAG TRAIL

SCOTTSDALE, ARIZONA
NEW BAR AND RESTAURANT
FOR: JOCQUE CONCEPTS

**DESIGN REVIEW
EXTERIOR COLORS & MATERIALS
v.02E ALT**

CASE #: 777-PA-19
2020 . 08 . 20
REVISED: 2020 . 10 . 09
REVISED: 2021 . 01 . 29



WF1 - STUCCO

MFG: ANY
TYPE: EXTERIOR LIME PLASTER STUCCO
COLOR: DUNN EDWARDS
#DEC749 "LINEN"
FINISH: MEDIUM SAND FINISH
LRV: 47



**CO1A - PRECAST CONCRETE
CO1B - CONCRETE PLASTER**

MFG: CONCRETE DESIGNS INC
COLOR: GS60
FINISH: ACID ETCH FINISH
LRV: 60



BK1 - BRICK ACCENT

MFG: GENERAL SHALE BRICK
TYPE: BRICK VENEER
COLOR: STAINED DUNN EDWARDS
#DET630 "RENWICK BROWN"
FINISH: STAINED AGED FINISH
LRV: 14



WD1 - WOOD BEAMS

MFG: LOCAL WOOD SUPPLIER
TYPE: DOUG-FIR W/ EXTERIOR STAIN
COLOR: ANTIQUE OAK
FINISH: SEMI TRANSPARENT MATTE STAIN AND SEAL



WD2 - WOOD SIDING

MFG: LOCAL WOOD SUPPLIER
TYPE: 6" CEDAR PLANK SIDING W/ EXTERIOR STAIN
COLOR: WEATHERED GREY OAK
FINISH: SEMI TRANSPARENT MATTE STAIN AND SEAL
LRV: 87



MT1 - METAL

MFG: ARC STEEL (OR SIMILAR)
TYPE: STEEL
COLOR: HOT ROLLED BLACKENED STEEL
FINISH: MATTE SEALED
LRV: NATURAL MATERIAL COLOR VARIES



MT2 - METAL

MFG: ARC STEEL (OR SIMILAR)
TYPE: STEEL
COLOR: POWDERCOAT: DUNN EDWARDS
#DEW380 - "WHITE"
FINISH: MATTE FINISH
LRV: 93



MT3 - METAL

MFG: ARC STEEL (OR SIMILAR)
TYPE: STEEL
COLOR: PREWEATHERED "RUST"
FINISH: MATTE SEALED
LRV: NATURAL MATERIAL COLOR VARIES



TL1 TILE

MFG: BEDROSIANS TILE
TYPE: SUBWAY TILE 3" X 9"
COLOR: DESERT LINEN WHITE



TL2 - TILE

MFG: CLE TILE
TYPE: GLAZED 6" SQUARE TILE
COLOR: PALACE RED ZELLIGE



Context Aerial

54-DR-2019

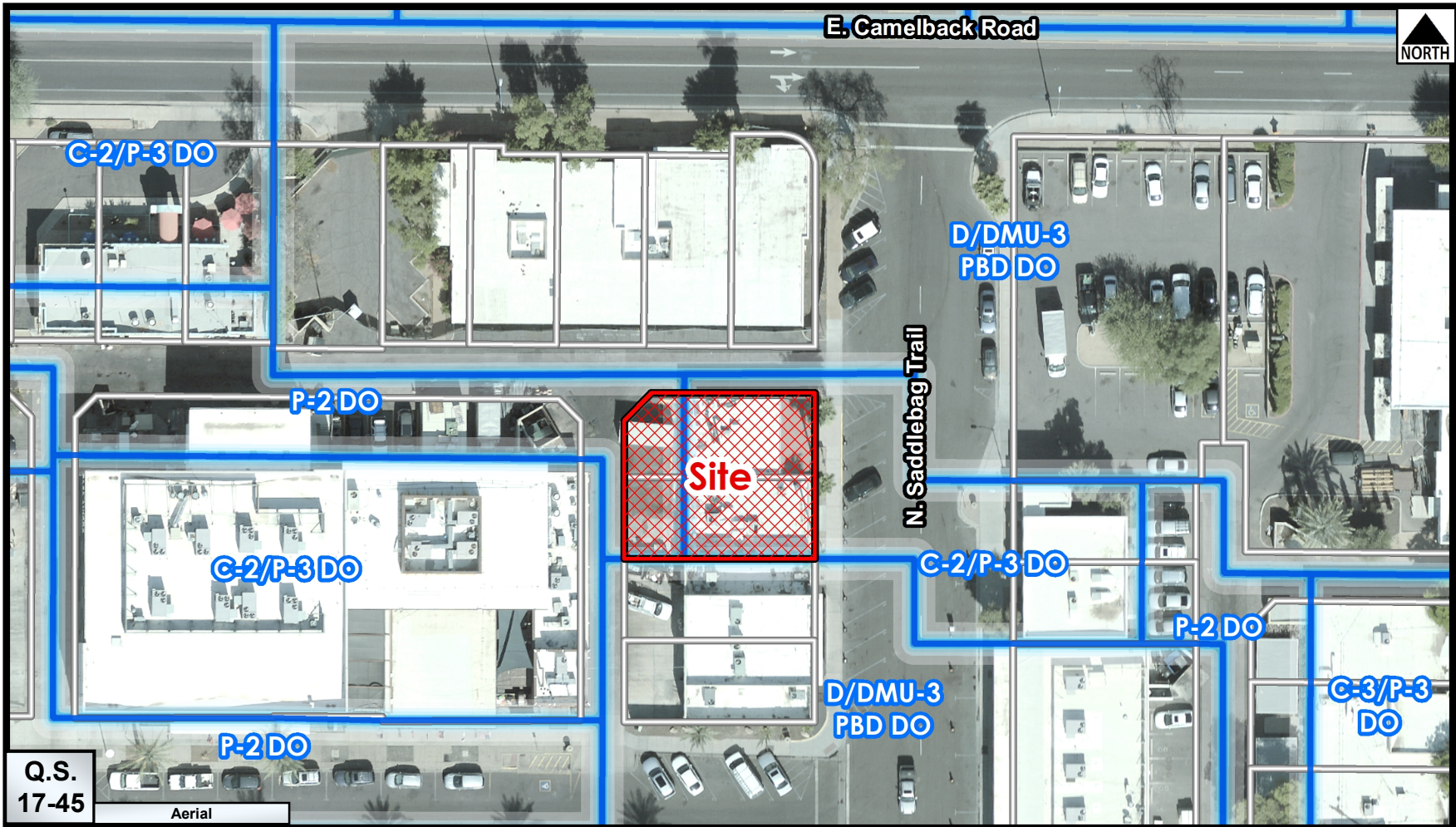


Q.S.
17-45

Google Earth Pro Imagery

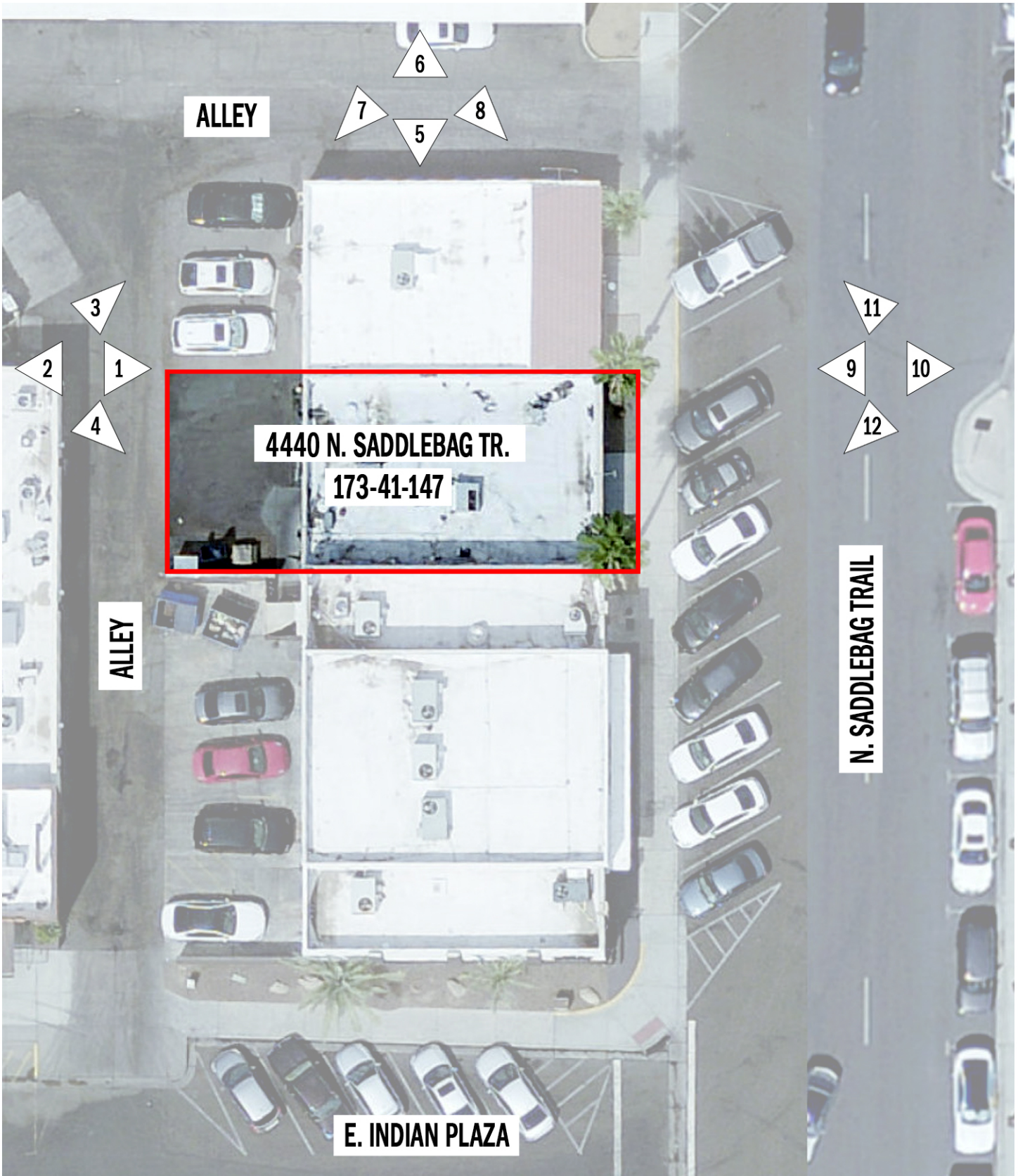
Close-up Aerial

54-DR-2019



Zoning Aerial

54-DR-2019

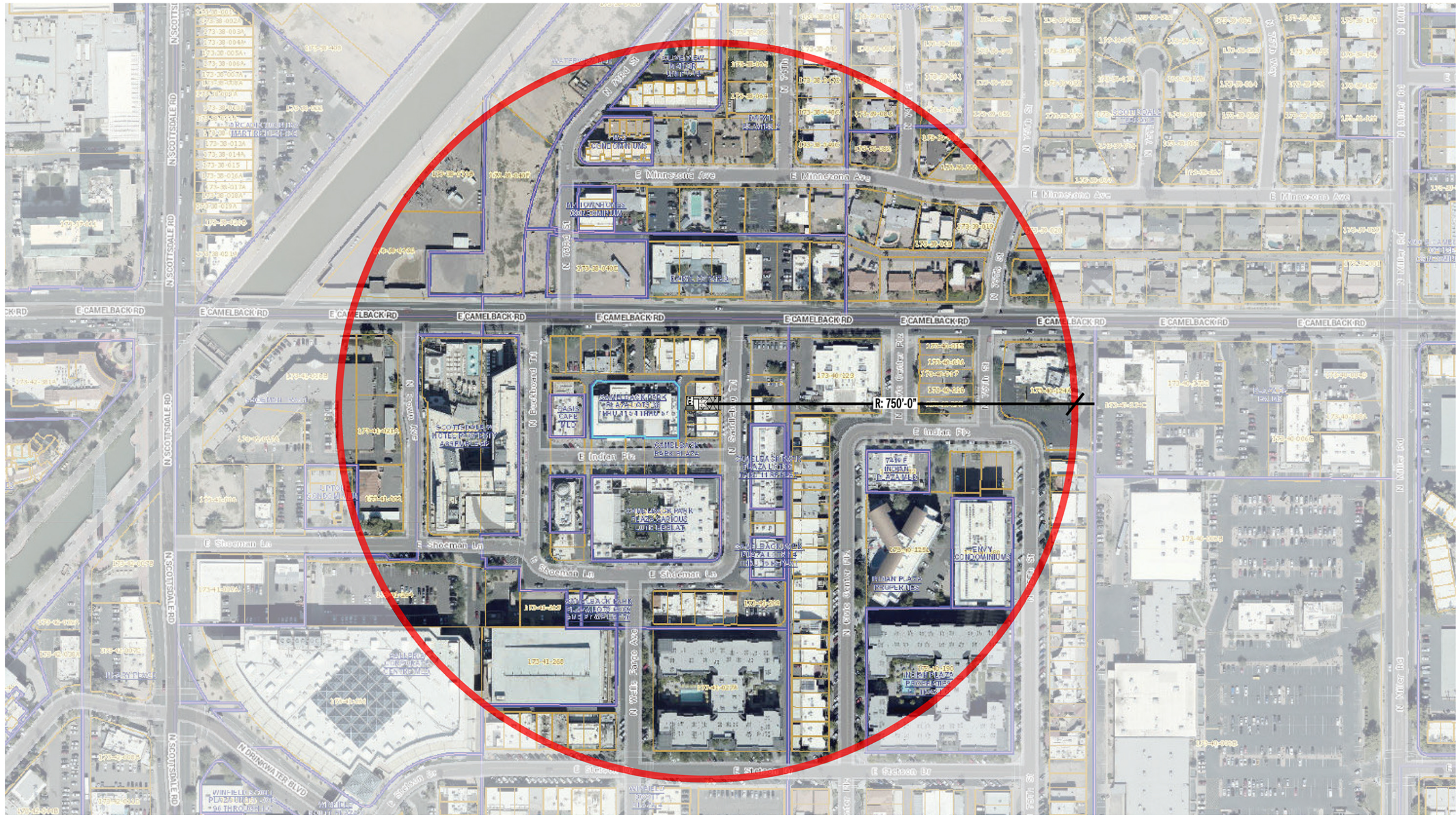


4440 SADDLEBAG TRAIL

SCOTTSDALE, ARIZONA
REMODEL/EXPANSION
FOR: VAPID INC.

**DESIGN REVIEW
EXISTING AERIAL**

CASE #: 777 -PA-19
2019 . 11 . 27



4440 SADDLEBAG TRAIL

SCOTTSDALE, ARIZONA
REMODEL/EXPANSION
FOR: VAPID INC.