



Development Review (Minor) Staff Approval

146-SA-2020
Peloton Showroom

APPLICATION INFORMATION

LOCATION:	15059 N Scottsdale Rd Ste 205	APPLICANT:	Kimberly Sohmer
PARCEL:	215-56-423	COMPANY:	Raffaele Castelli
Q.S.:	34-45	ADDRESS:	122 W 27th Street 4th Floor New York, NY 10001
ZONING:	PRC	PHONE:	(212) 647-0011

Request: Tenant interior fit out within existing retail space. Work to include new interior partitions, new finishes, new sales fixtures, new storefront, new electrical, mechanical, plumbing, work.

STIPULATIONS

1. Architectural elements, including dimensions, materials, form, color, and texture, shall be constructed to be consistent with the building elevations submitted by HBC Architects, with a city staff approval date of 6/29/2020.
2. The location and configuration of all site improvements shall be consistent with the floor plan submitted by HBC Architects, with a city staff date of 6/29/2020.
3. Prior to permit issuance the applicant shall provide a copy of the landlord approval for the proposed exterior modifications to the storefront.
4. All signage shall require separate review and permit.

CONSTRUCTION DOCUMENT PLAN REVIEW SUBMITTAL REQUIREMENTS

Digital Plan submittals can be made using the City's e-Services at <https://eservices.scottsdaleaz.gov/bldgresources/plans> and should include one PDF copy of each of the required plans/documents identified below.

ARCHITECTURAL: ☒ Tenant Improvement Submittal

PERMIT APPLICATION: ☒ **Completed Permit Application**

The permit application may be filled-out and submitted online at:
<https://eservices.scottsdaleaz.gov/bldgresources/plans>

Expiration of Development Review (Minor) Approval

This approval expires two (2) years from date of approval if a permit has not been issued, or if no permit is required, work for which approval has been granted has not been completed.

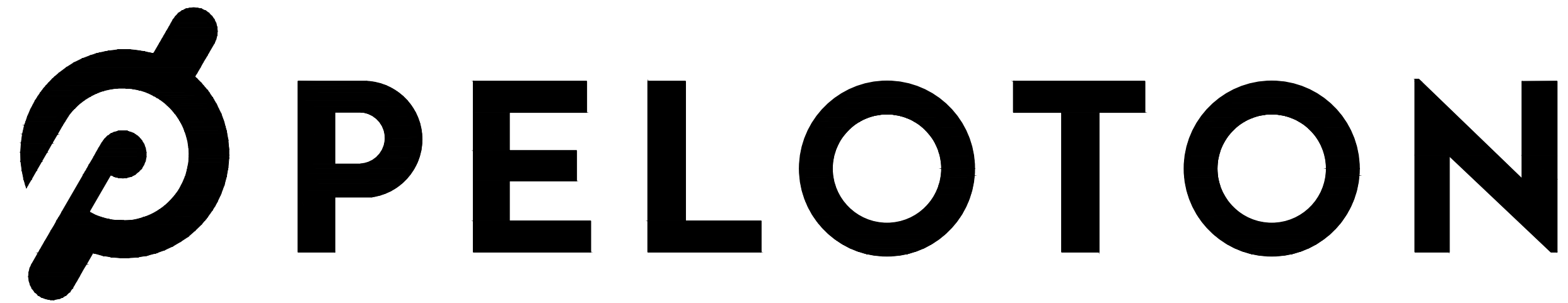
Staff Signature: 

Bryan Cluff, 480-312-2258

Date: 6/29/2020

Planning and Development Services

7447 East Indian School Road, Suite 105, Scottsdale, Arizona 85251 • www.ScottsdaleAZ.gov



STIPULATION SET
RETAIN FOR RECORDS
APPROVED

06/29/2020

DATE

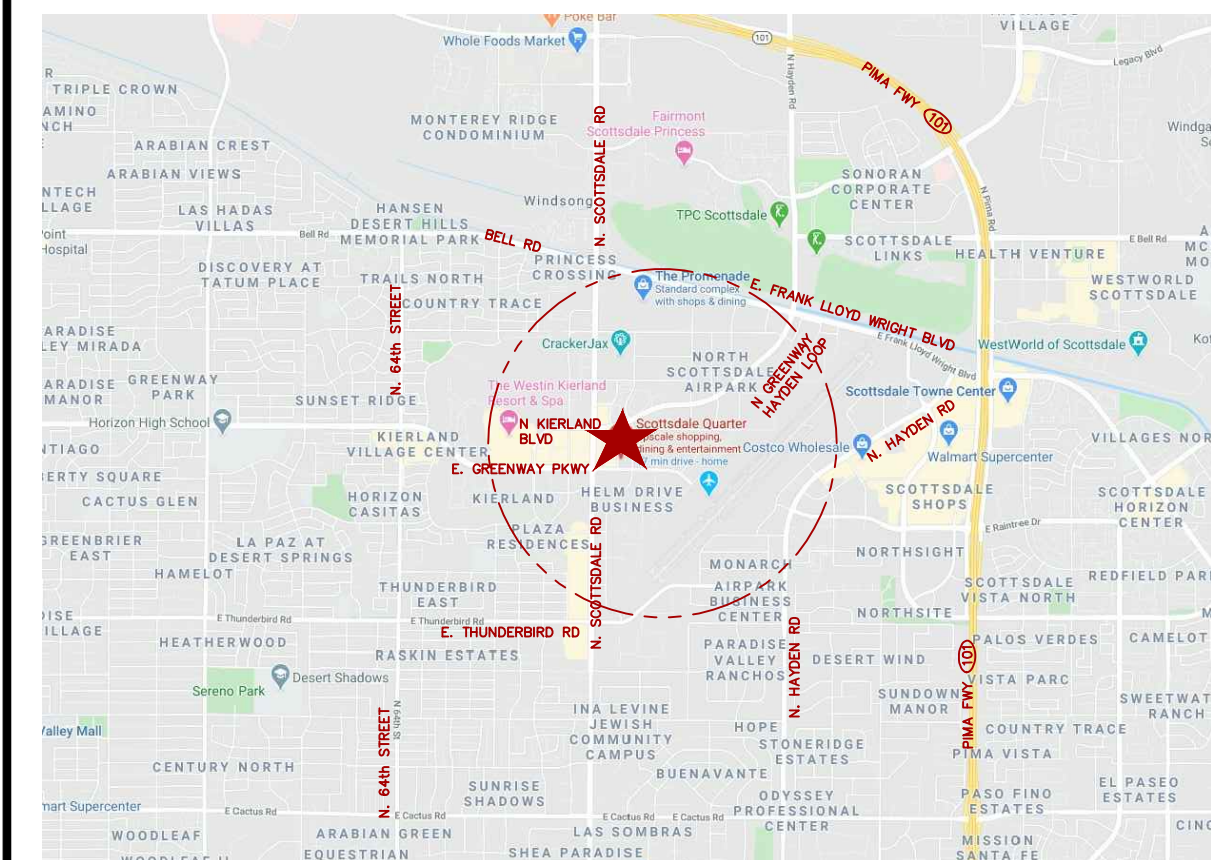
APPROVED BY

SCOTTSDALE QUARTER
15059 N. Scottsdale RD. Ste 205
Scottsdale, AZ 85254
Space # E40

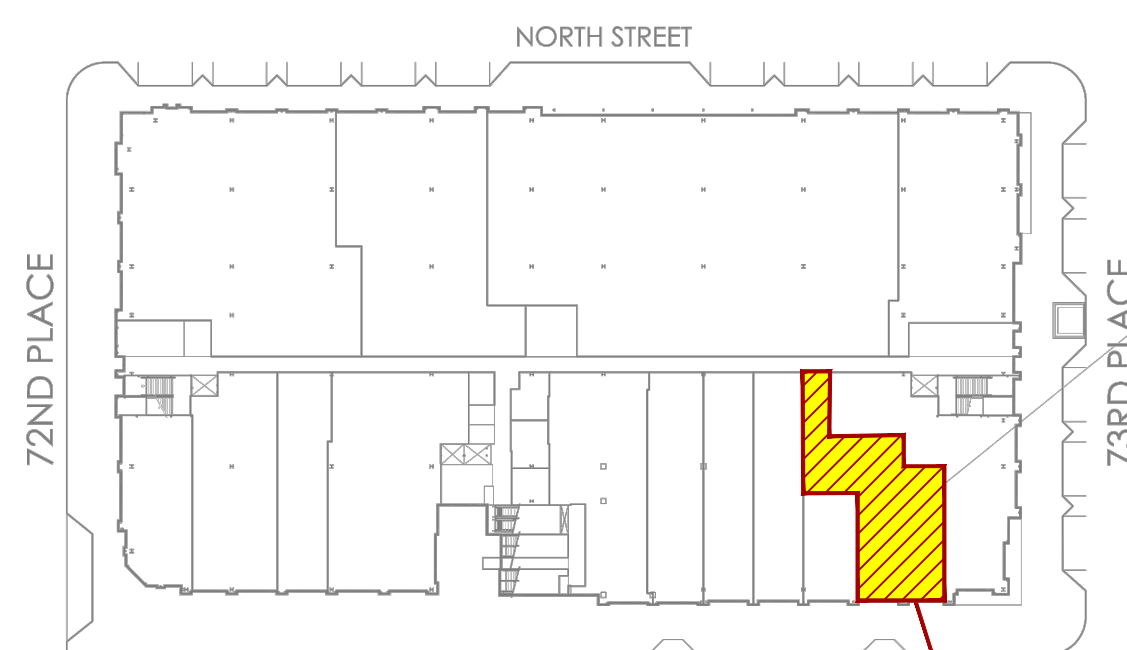
Project Rendering



Vicinity Map



Site Location Plan



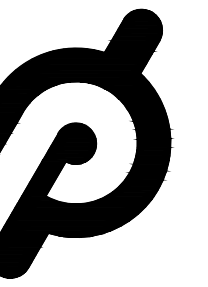
SCOTTSDALE QUARTER
15059 N. Scottsdale RD. Ste 205
Scottsdale, AZ 85254
Space # E40



Drawing Index

NO.	DESCRIPTION	DATE
1	COVER SHEET	06/08/20
2	DRAWING INDEX	06/08/20
3	PROJECT RENDERING	06/08/20
4	VICINITY MAP	06/08/20
5	SITE LOCATION PLAN	06/08/20
6	ARCHITECTURAL	06/08/20
7	LOW VOLTAGE AV/IT	06/08/20
8	STRUCTURAL	06/08/20
9	MECHANICAL	06/08/20
10	PLUMBING	06/08/20
11	ELECTICAL / FIRE ALARM	06/08/20
12	FIRE SPRINKLER	06/08/20
13	ENERGY COMPLIANCE	06/08/20

CLIENT



PELOTON

ARCHITECT

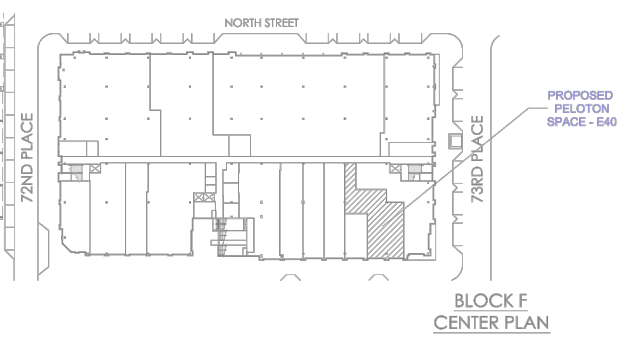


HOWELL BELANGER CASTELLI ARCHITECTS
122 West 27th Street, 4th Floor
New York, New York 10001
tel. (212) 647-0011
www.hbcarch.com

MEP, FIRE PROTECTION AND STRUCTURAL ENGINEER

THORSON BAKER + ASSOCIATES

3030 West Streetsboro Road
Richfield, Ohio
tel. (330) 659-6688
www.thorsonbaker.com



SPACE - E40
BLOCK "F", GROUND LEVEL
SCOTTSDALE QUARTER
SCOTTSDALE, AZ

SUBMISSIONS:

DESCR. DATE

No. DESCRIPTION DATE

1 Permit 06/08/20

2 Bld 06/08/20

3

4

5

6

7

8

9

10

11

12

13

14

15

16

17

18

19

20

21

22

23

24

25

26

27

28

29

30

31

32

33

34

35

36

37

38

39

40

41

42

43

44

45

46

47

48

49

50

51

52

53

54

55

56

57

58

59

60

61

62

63

64

65

66

67

68

69

70

71

72

73

74

75

76

77

78

79

80

81

82

83

84

85

86

87

88

89

90

91

92

93

94

95

96

97

98

99

100

101

102

103

104

105

106

107

108

109

110

111

112

113

114

115

116

117

118

119

120

121

122

123

124

125

126

127

128

129

130

131

132

133

134

135

136

137

138

139

140

141

142

143

144

145

146

147

148

149

150

151

152

153

154

155

156

157

158

159

160

161

162

163

164

165

166

167

168

169

170

171

172

173

174

175

176

177

178

179

180

181

182

183

184

185

186

187

188

189

190

191

192

193

194

195

196

197

198

199

200

201

202

203

204

205

206

207

208

209

210

211

212

213

214

215

216

217

218

219

220

221

222

223

224

225

226

227

228

229

230

231

232

233

234

235

236

237

238

239

240

241

242

243

244

245

246

247

248

249

250

251

252

253

254

255

256

257

258

259

260

261

262

263

264

265

266

267

268

269

270

271

272

273

274

275

276

277

278

279

280

281

282

1. ALL GYP. BOARD CEILINGS, PORTALS AND EXPOSED WALLS TO BE SKIM-COATED TO A "LEVEL 4" FINISH, READY TO RECEIVE NEW PAINT FINISH. REFER TO FINISH SCHEDULE FOR ADDITIONAL INFORMATION.
2. WOOD SPECIFIED ABOVE THE CEILING SHALL BE FIRE RETARDANT TREATED, WHERE POSSIBLE, USE NONCOMBUSTIBLE FRAMING MEMBERS FOR BACKING, BLOCKING, AND LATERAL BRACING.
3. SEE M,E,P,FP SETS ISSUED BY ENGINEERS.
4. SEE A-130 FOR LIGHTING SCHEDULE.
5. PEOPLE COUNTER, CCTV CAMERA, INVISIBLE SPEAKER, WIRELESS ACCESS POINT SPECIFICATIONS PROVIDED BY IT VENDOR, LERNER SOLUTIONS.
6. SPRINKLER COVER FINISH TO MATCH CEILING FINISH.
7. REFER TO ELECTRICAL DRAWINGS FOR ALL EMERGENCY LIGHT DESIGNATIONS
8. ALL CEILING HEIGHTS ARE TO BE REFERENCED FROM TOP OF INTERIOR FINISHED FLOOR.

RCP/LIGHTING PLAN NOTES

- SUSPENDED GYPSUM BOARD CEILING
- GYPSUM BOARD COVE
- SUSPENDED ACT CEILING SYSTEM
- WOOD SLAT CEILING ASSEMBLY BELOW GYPSUM CEILING
- RETURN DIFFUSER. SEE MECH. PLANS
- SUPPLY DIFFUSER. SEE MECH. PLANS
- LINEAR DIFFUSER. SEE MECH. PLANS.
- MOTION SENSOR - SEE A/I/T DWGS.
- CEILING SPEAKER - SEE A/I/T DWGS.
- ACCESS POINT - SEE A/I/T DWGS.
- IP CAMERA - SEE A/I/T DWGS.
- TRAFFIC COUNTING CAMERA - SEE A/I/T DWGS.

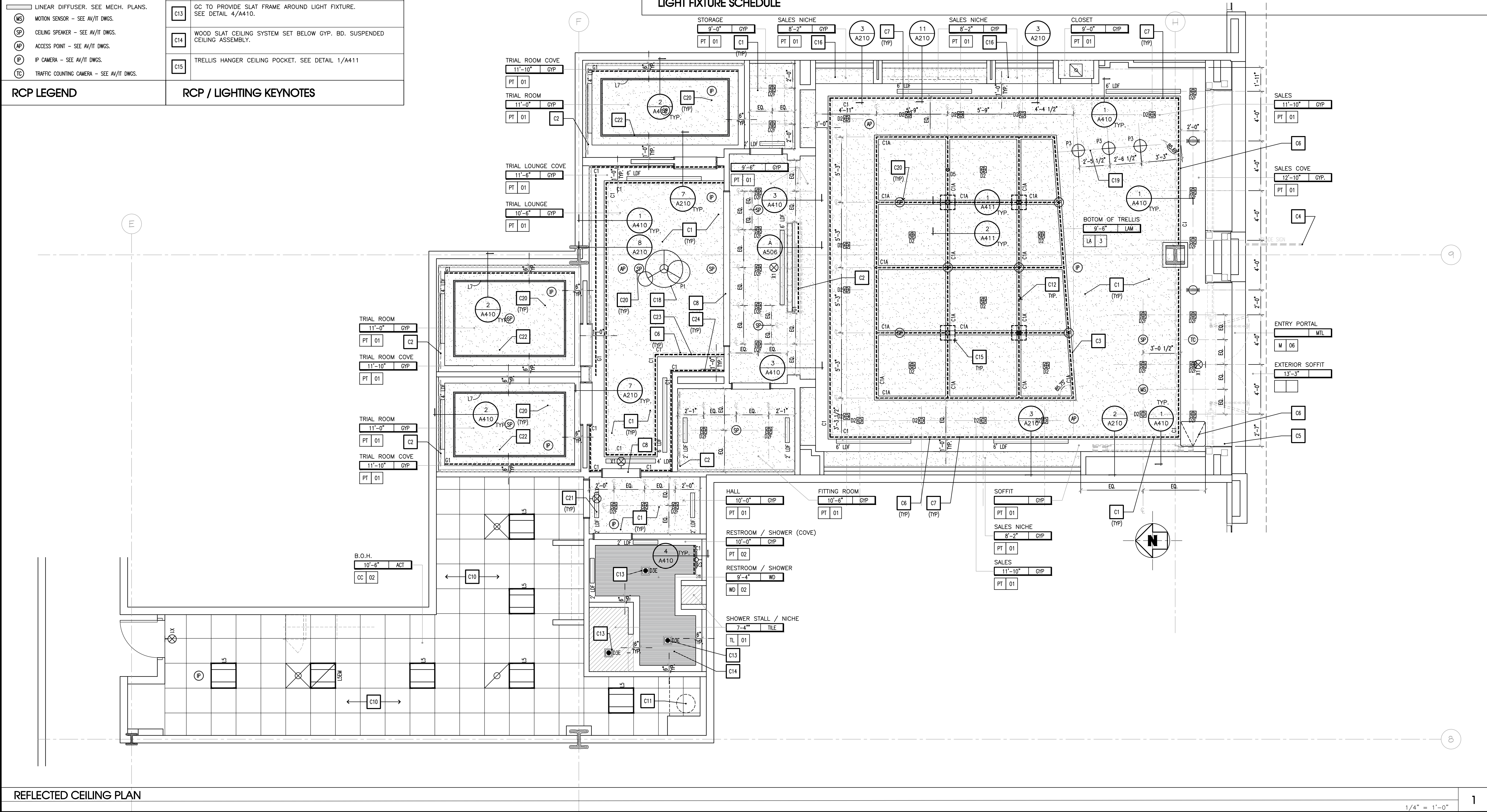
RCP LEGEND

- C1 SUSPENDED DRYWALL CEILING SYSTEM. SEE DETAIL 2/A410.
- C2 ILLUMINATED MILLWORK AND GLASS WALL ASSEMBLY WITH INTERNAL LED LIGHTING. SEE SHEET A160, INTERIOR ELEVATIONS, SECTIONS AND ELECTRICAL DRAWINGS FOR ADDITIONAL INFORMATION.
- C3 ILLUMINATED SUSPENDED CEILING TRELLIS ELEMENT. SEE SHEET A411.
- C4 ILLUMINATED BLADE SIGN.
- C5 ILLUMINATED ENTRANCE PORTAL. SEE EXTERIOR ELEVATIONS.
- C6 BOTTOM DISCHARGE LINEAR DIFFUSER (SUPPLY / RETURN), NARROW SLOT TYPE (1 1/2") WITH MUD-IN ASSEMBLY.
- C7 LIGHT COVE WITH CONTINUOUS 1" SLOT FOR RETURN AIR, SEE MECHANICAL DRAWINGS AND ARCHITECTURAL DETAIL
- C8 1" THICK PAINTED WOOD CASED HEADER APPLIED TO CEILING.
- C9 ACCESS PANEL (18"x18") FOR EXTERIOR SIGN AND PORTAL POWER. SEE DETAIL 6/A410.
- C10 SUSPENDED ACT CEILING SYSTEM. SEE DETAIL 1/A410.
- C11 WATER HEATER ON SHELF ABOVE MOP/SLOP SINK.
- C12 LED UP-LIGHT AND DOWN-LIGHT INSTALLED IN SALES AREA CEILING TRELLIS. SEE DETAIL 2/A-411
- C13 GC TO PROVIDE SLAT FRAME AROUND LIGHT FIXTURE. SEE DETAIL 4/A410.
- C14 WOOD SLAT CEILING SYSTEM SET BELOW GYP. BD. SUSPENDED CEILING ASSEMBLY.
- C15 TRELLIS HANGER CEILING POCKET. SEE DETAIL 1/A411
- C16 GC TO PROVIDE METAL STUD FRAMING AT SALES AREA SOFFIT FOR MILLWORK. COORDINATE WITH MILLWORK SHOP DRAWINGS.
- C17 LED LIGHTING IN TRELLIS. SEE DETAIL 2/A-411.
- C18 BOTTOM OF PENDANT LIGHT FIXTURES IN LOUNGE AREA TO BE SET AT 9'-6" A.F.F.
- C19 BOTTOM OF PENDANT LIGHT FIXTURES AT COMMUNITY TABLE TO BE SET AT 7'-0" A.F.F.
- C20 RECESSED CEILING SPEAKER AT DRYWALL CEILING. COORDINATE WITH AV DRAWINGS
- C21 BOTTOM DISCHARGE LINEAR DIFFUSER (SUPPLY / RETURN), PAINT TO MATCH ADJACENT SOFFIT. SEE MECHANICAL DRAWINGS.
- C22 RECESSED LINEAR LIGHT FIXTURE. SEE SHEET A221 FOR REQUIRED HOLD DIMENSIONS FOR DRYWALL FRAMED THROUGH ENCLOSURE.
- C23 LED "C1" CEILING COVE LIGHTING IN TRIAL LOUNGE AREA, SEE SECTION DETAIL: 2/A410
- C24 LED "C1" WALL COVE LIGHTING IN TRIAL LOUNGE AREA, SEE SECTION DETAIL: 7/A210

RCP / LIGHTING KEYNOTES

TYPE	NAME	COMPANY	DESCRIPTION	FINISH	LOCATION	VOLTS	WATT	LAMP	REMARKS
C1	LINE VOLTAGE LINEAR LED, 48", 12", 3500K/10' LEADER CABLE/1' JUMPER CABLE/0-10V DIMMING MODULE	ECOSENSE	SCD-M-48-35-MULT/SCD-M-12-35-MULT/CBL-2P-LWH-LDR-UNV-10/CBL-2P-LWH-JMP-UNV-1/SCD-3DM-120-277-010V-WH	ALUMINUM	SALES AREA PERIMETER COVE	120V	4 W/FT	LED	LINE VOLTAGE
C1A	LINEAR COVE LIGHT	LUMINI	LL48HE-HO-35K-SL-SL-PER DWGS K305-PER DWGS-HF-SA	ALUMINUM	TRELLIS	24.0 V	5.9 W/FT	LED	FABRICATOR TO PAINT INTERIOR POCKET OF RECESS MATTE WHITE
C1B	LOW VOLTAGE TAPE LIGHT W/REMOTE DRIVER	TBD	LLFEIX18-35K-TBC-TBC-PER DWGS CONNECTORS, CABLES, AND REMOTE DRIVERS AS REQUIRED	NA	TRELLIS, CEILING	24.0 V	2.65 W/FT	LED	LOW VOLTAGE, REMOTE DRIVER
C1D	FLEXIBLE DIRECT VIEW LIGHT	QTRAN	BOXA-SW-**-DRY-35-ENC/TL	WHITE	DISPLAYS AND MILLWORK MIRROR PANELS	24.0 V	3 W/FT	LED	LOW VOLTAGE, REMOTE DRIVER
C1G	UNDER SHELF LIGHT	LUMINI	LL36WET-T-35K K45M-PER MW-HF-SA	ALUMINUM	SHOWER ROOM SHELVING	24.0 V	3 W/FT	LED	
D2	22" SQUARE ADJUSTABLE TRIMLESS DOWNLIGHT, MATTE WHITE, NARROW FLOOD	AMERLUX	HOUSING: HDL-HP-S-NC-A17-TL-18-120-0-10V TRIM: HDL-HP-SA-A17-TL-MW-WF-309	WHITE TO MATCH CEILING	SALES, TRIAL LOUNGE AND HALL	120.0 V	18.0 W	LED	NARROW FLOOD LENSE
D2F	45" SQUARE ADJUSTABLE TRIMLESS DOWNLIGHT, MATTE WHITE, WIDE FLOOD	AMERLUX	HOUSING: HDL-HP-S-NC-A17-TL-18-120-0-10V TRIM: HDL-HP-SA-A17-TL-MW-WF-309	WHITE TO MATCH CEILING	SALES AND MISC.	120.0 V	18.0 W	LED	WIDE FLOOD LENSE
D3	SQUARE TRIMMED DOWNLIGHT, 3000K, BLACK, WET-RATED TRIM	NO. 8 LIGHTING	201-S-HI-3000-40-DM2-2-FMB+FLS-2-WH-SF2-NIC-S	MATTE WHITE	RESTROOM / SHOWER	120.0 V	8 W	LED	REMOTE DRIVER 0-10V DIMMING, MAX 4 FIXTURES PER DRIVER, RAL1015
D5	SQAURE DOWNLIGHT WITH WET RATED TRIM	AMERLUX	HORNET HP HDL-HP-S-NC-A17-T-13-120-LE/TE TRIM: MBW, WIDE FLOOD, 3500K	BLACK	EXTERIOR CANOPY	120 V	13 W	LED	
G1	LED WALL WASHER	LUMINI	TAPE LIGHT: FOT-01-0G-35-24-90, CHANNEL: FOTSC-84-NL-SA	ALUMINUM	P-WALL AND TRIAL ROOMS	24 V	9 W/FT	LED	0-10V DIMMING
L4	4' LINEAR SUSPENDED LED LIGHT, 3000K, 90CRI	LITHONIA	L4: ZL10 L48 3000LM FST MVOLT 3000K 90CRI WH L4 EM: ZL10 L48 3000LM FST MVOLT 3000K 90CRI WH E7W ***PROVIDE WITH EMERGENCY BATTERY BACK UP WHERE L4-EM IS NOTED ON DWGS** 48" L X 2.9882" H X 2.2234" W FLP-22-D-3830	WHITE	STORAGE	120 V	30 W	LED	0-10V DIMMING
L5	2X2 LED FLAT PANEL, 3000K	ABB	FLP-22-D-3830	WHITE	B.O.H. / OFFICE	120 V	38 W	LED	0-10V DIMMING
L5EM	2X2 LED FLAT PANEL, 3000K W/EM BATTERY BACKUP	ABB	FLP-22-D-3830-EBU	WHITE	B.O.H. / OFFICE	120 V	38 W	LED	0-10V DIMMING
L7	1.58" WIDE RECESSED	LF ILLUMINATION	EF3-A-S-04F-9035-LN-D2-X-U-WW	WHITE	TRIAL ROOMS	120V-277V	4 W/FT	LED	0-10V DIMMING
P1	DECORATIVE PENDANT OVERALL MAX HEIGHT 157.5"	VOON	VMC34960BL	BLACK	TRIAL LOUNGE	120-277V	51 W	LED	TRI-MODE DIMMING (0-10V, ELV, & TRIAC)
P3	DECORATIVE PENDANT	FLOS	FU317630 + LED030 LAMP	BLACK	COMMUNITY HUB	120 V	14 W		TRIAC DIMMING
S2	SARAH SCONCE, 24V W/REMOTE DRIVER, 10W, 3000K, 90CRI, BLACK FINISH	HEMERA	SHW-SP-02-LED-28/9-DIM-LED-REM	BLACK	SHOWER AND RESTROOM	24V	10 W	LED	TRIAC DIMMING
X1	UNIVERSAL EDGE/LIT, SINGLE FACE, RED LETTERING, WHITE HOUSING	CONTECH	REXA-SF-R-EM-P	WHITE	VARIOUS	120-277V	3 W	LED	UNIVERSAL MOUNT/DIRECTIONAL ARROWS

LIGHT FIXTURE SCHEDULE



CLIENT

PELOTON

ARCHITECT

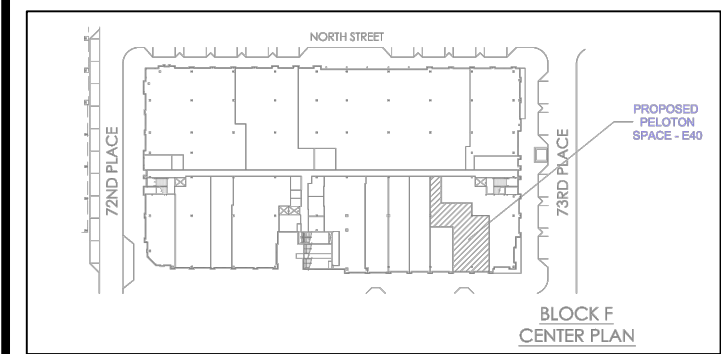
HOWELL BELANGER CASTELLI ARCHITECTS

122 West 27th Street, 4th Floor
New York, New York 10001
tel. (212) 647-0011
www.hbcarch.com

MEP, FIRE PROTECTION AND STRUCTURAL ENGINEER

THORSON BAKER + ASSOCIATES

3030 West Streetsboro Road
Richfield, Ohio
tel. (330) 659-6688
www.thorsonbaker.com



SPACE - E40
BLOCK "F", GROUND LEVEL
SCOTTSDALE QUARTER
SCOTTSDALE, AZ

SUBMISSIONS:

DESCR. DATE

No.	DESCRIPTION	DATE
1		
2		
3		
4		
5		
6		
7		
8		
9		
10		
11		
12		
13		
14		
15		
16		
17		
18		
19		
20		

These plans are an instrument of service and the property of the Architect, infringements will be prosecuted.

General Contractor to verify all conditions and dimensions at the premises. Discrepancies shall be reported to the Architect prior to the commencement of any work.

PROJECT NAME AND LOCATION:

Scottsdale Quarter
Scottsdale, AZ
Space # E40

DRAWING DESCRIPTION:

REFLECTED CEILING / LIGHTING PLAN
LEGEND and NOTES

PROFESSIONAL SEAL HBC PROJECT NO: 19065

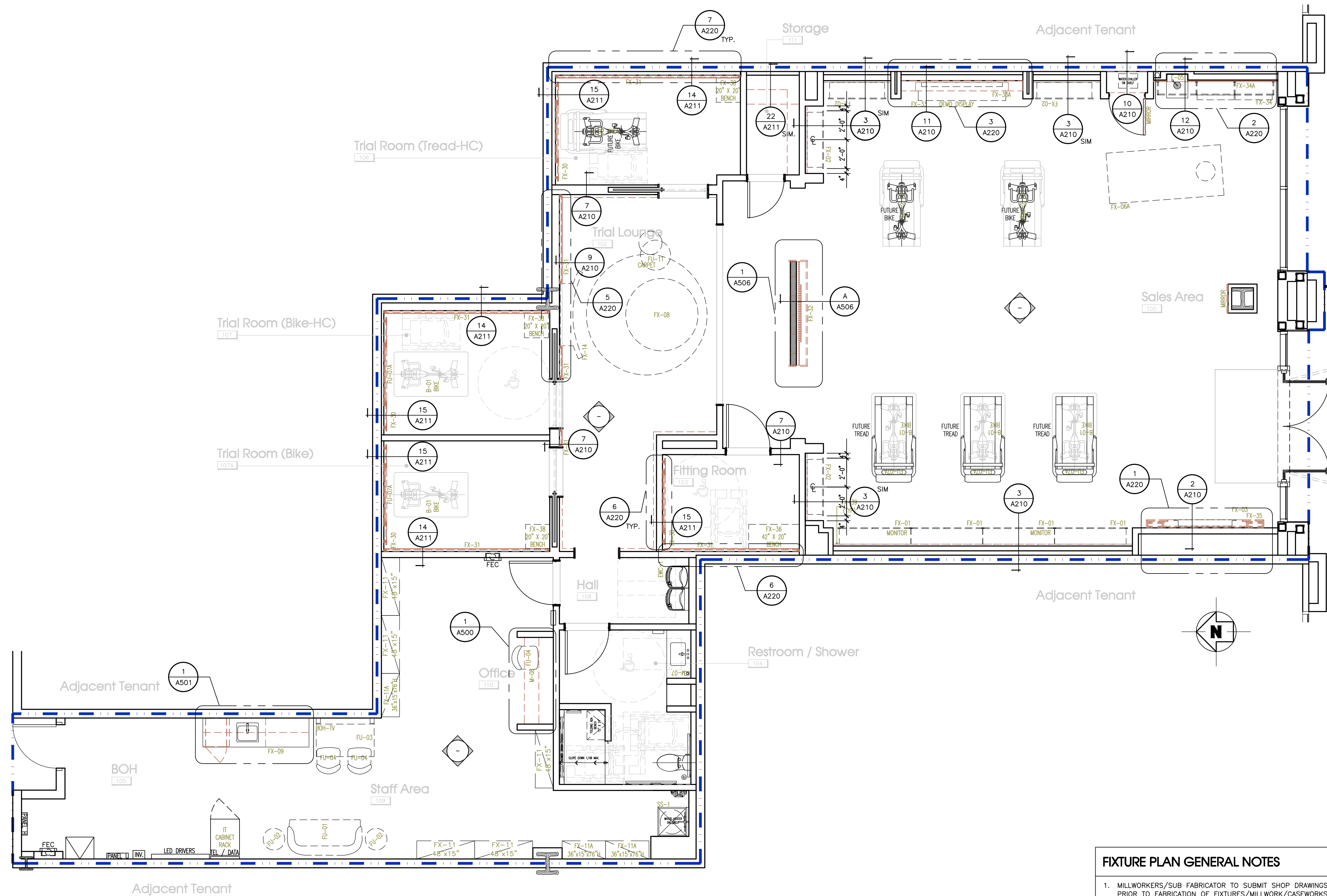
A-130

REFLECTED CEILING PLAN

1/4" = 1'-0"

1

FIXTURE and MILLWORK SCHEDULE



FIXTURE PLAN

1/4"=1'-0"

1

FIXTURE PLAN GENERAL NOTES

- MILLWORKERS/SUB FABRICATOR TO SUBMIT SHOP DRAWINGS FOR APPROVAL PRIOR TO FABRICATION OF FIXTURES/MILLWORK/CASEWORKS
- REFER TO SHEET A-005 AND RESTROOM PLAN FOR PLUMBING FIXTURE AND ACCESSORY SPECIFICATIONS
- ALL THE ITEMS WHETHER PROVIDED BY PELOTON OR THE GC ARE INSTALLED BY THE GC UNLESS OTHERWISE NOTED

AREA BREAKDOWN

TOTAL LEASE AREA	= 2,731 SF
SALES AREA	= 1,208 SF
RESTROOM AND SHOWER AREAS	= 126 SF
TRIAL LOUNGE AND ROOMS	= 790 SF
BOH AREA	= 607 SF

CLIENT



PELOTON

ARCHITECT

HOWELL BELANGER CASTELLI ARCHITECTS

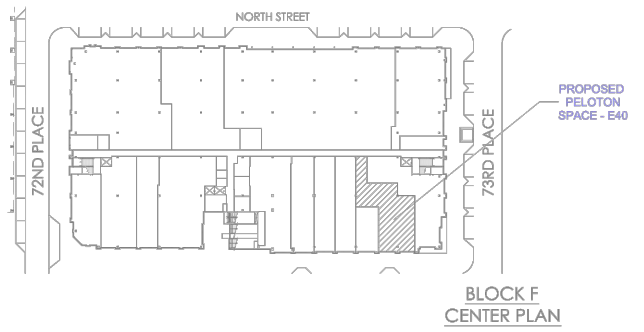
122 West 27th Street, 4th Floor
New York, New York 10001
tel. (212) 647-0011
www.hbcarch.com



MEP, FIRE PROTECTION AND STRUCTURAL ENGINEER

THORSON BAKER + ASSOCIATES

3030 West Streetsboro Road
Richfield, Ohio
tel. (330) 659-6688
www.thorsonbakerc.com



SPACE - E40
BLOCK "F", GROUND LEVEL
SCOTTSDALE QUARTER
SCOTTSDALE, AZ

SUBMISSIONS:

DESCR.	DATE
PELOTON REVIEW	03/09/20
PELOTON REVIEW	03/24/20

No.	DESCRIPTION	DATE
1		
2		
3		
4		
5		
6		
7		
8		
9		
10		
11		
12		
13		
14		
15		
16		
17		
18		
19		
20		

These plans are an instrument of service and the property of the Architect, infringements will be prosecuted.

General Contractor to verify all conditions and dimensions at the premises. Discrepancies shall be reported to the Architect prior to the commencement of any work.

PROJECT NAME AND LOCATION:

Scottsdale Quarter
Scottsdale, AZ
Space # E40

DRAWING DESCRIPTION:

FIXTURE FLOOR PLAN, FIXTURE AND MILLWORK SCHEDULE

PROFESSIONAL SEAL

HBC PROJECT NO: 19065

A-160

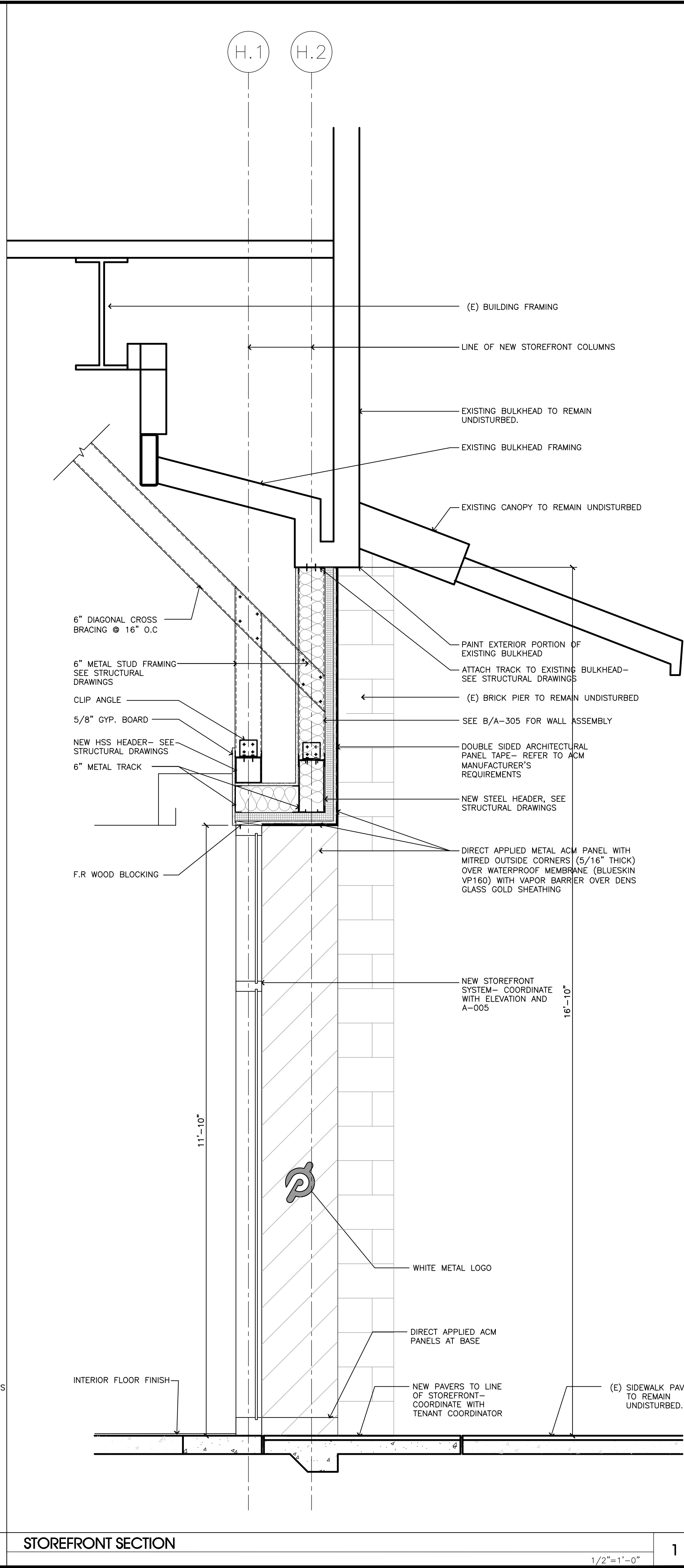
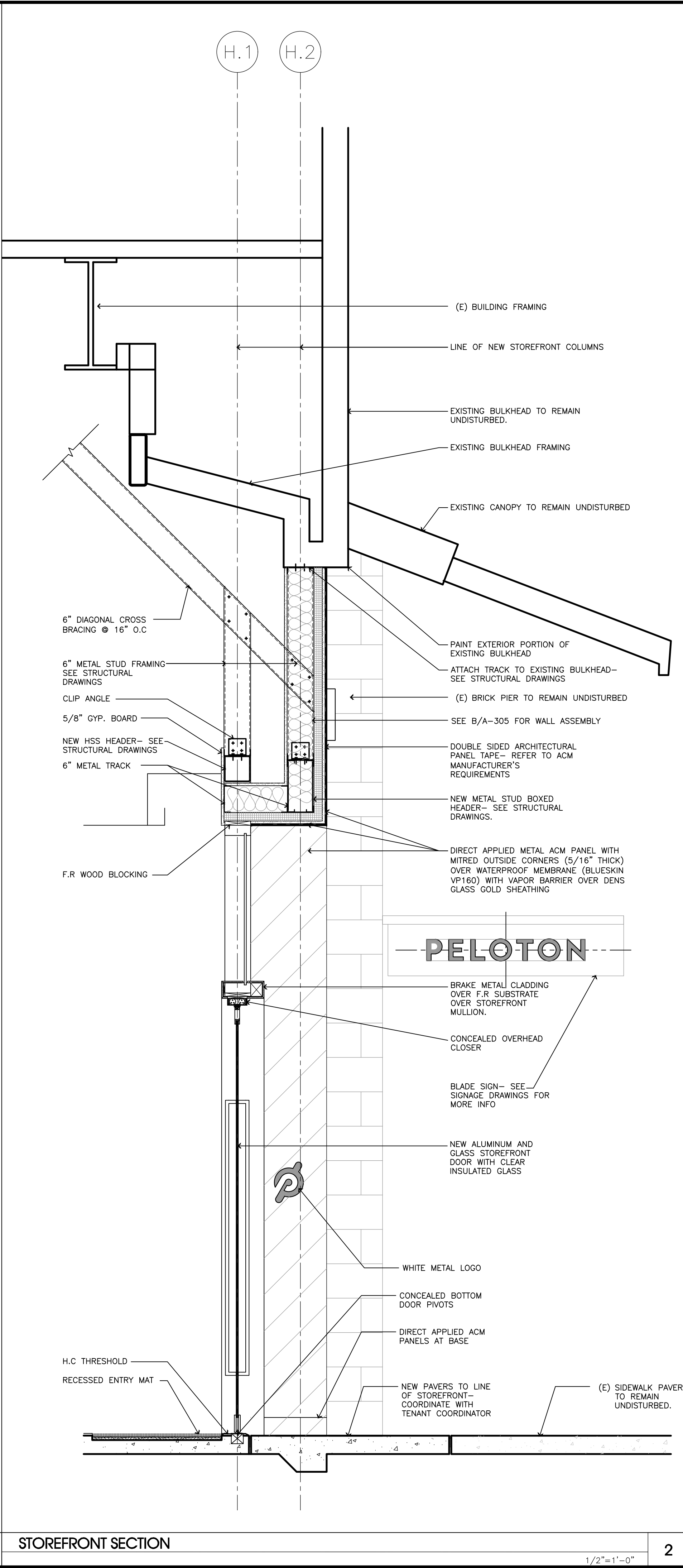
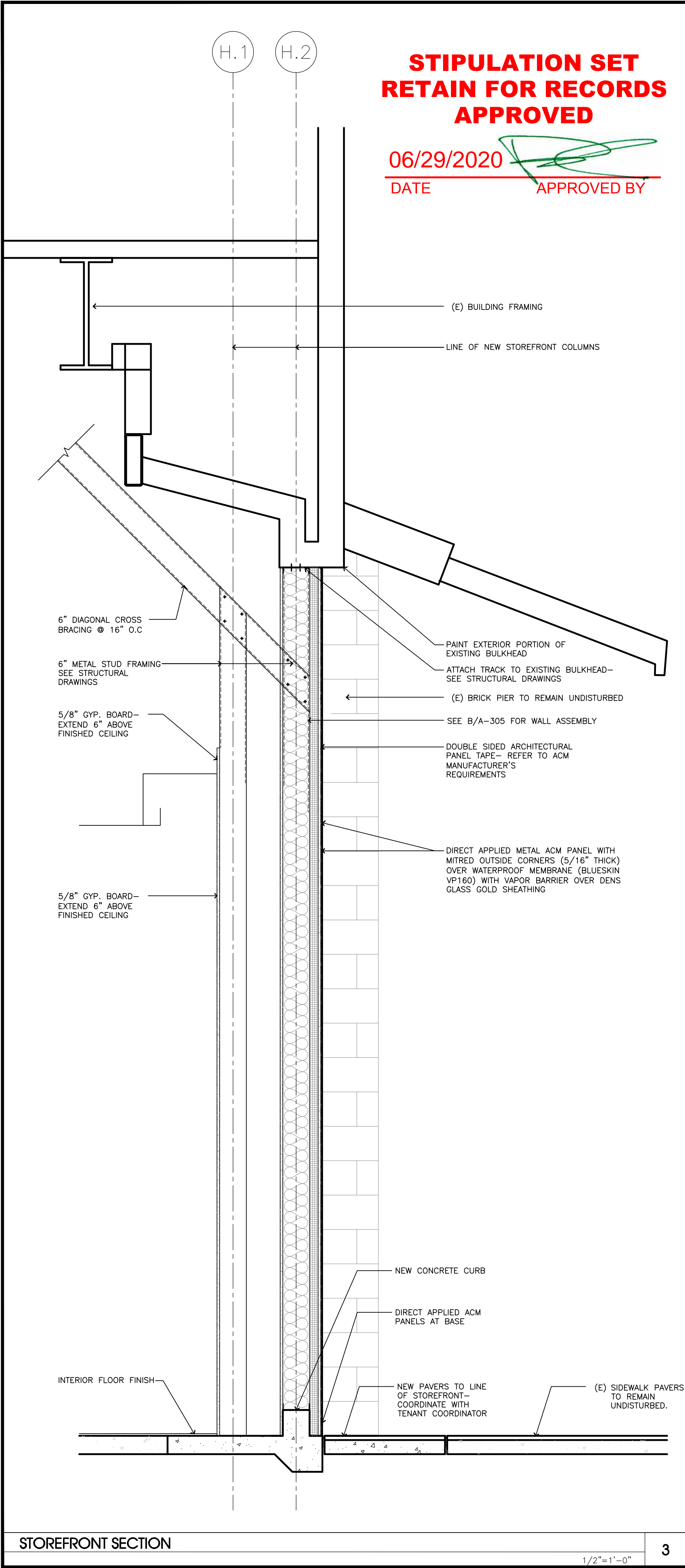
APPROVED BY

APPROVED BY



1

A-300



CLIENT

PELOTON

ARCHITECT

HOWELL BELANGER CASTELLI ARCHITECTS
122 West 27th Street, 4th Floor
New York, New York 10001
tel. (212) 647-0011
www.hbcarch.com

MEP, FIRE PROTECTION AND STRUCTURAL ENGINEER

THORSON BAKER + ASSOCIATES
3030 West Streetsboro Road
Richfield, Ohio
tel. (330) 659-6688
www.thorsonbaker.com

SPACE - E40
BLOCK "F", GROUND LEVEL
SCOTTSDALE QUARTER
SCOTTSDALE, AZ

SUBMISSIONS:

DESCR.	DATE
Permit	06/08/20
Bid	06/08/20

No.	DESCRIPTION	DATE
1		
2		
3		
4		
5		
6		
7		
8		
9		
10		
11		
12		
13		
14		
15		
16		
17		
18		
19		
20		

These plans are an instrument of service and the property of the Architect, infringements will be prosecuted.

General Contractor to verify all conditions and dimensions at the premises. Discrepancies shall be reported to the Architect prior to the commencement of any work.

PROJECT NAME AND LOCATION:

Scottsdale Quarter
Scottsdale, AZ
Space # E40

DRAWING DESCRIPTION:

STOREFRONT SECTIONS

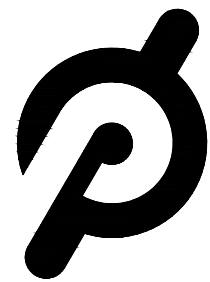
PROFESSIONAL SEAL

HBC PROJECT NO: 19065

A-301

ROOM NUMBER	ROOM	WALL BASE DETAIL	WALL BASE	WALL FINISH	CEILING FINISH / ASSEMBLY	FLOOR FINISH	NAME	FINISH DESIGNATION	MATERIAL	MANUFACTURER/SUPPLIER	SPECIFICATION	SAFETY DATA AND FLAME SPREAD INFORMATION	LOCATION	NOTES	
101	SALES	SEE SHEET A421	WOOD	PAINT/WC/WOOD	GYPSPUM/PAINT	SEE SHEET A120		AC-03	WHITE PLEXI		WHITE TRANSLUSCENT ACRYLC PLEXI GLASS – 7328		ENTRY PORTAL BANDS AND LOGO		
102	TRIAL LOUNGE	SEE SHEET A421	WOOD	PAINT/WC/WOOD	GYPSPUM/PAINT	SEE SHEET A120	CARPET	CT-01	CARPET TEXTURED WARM GREY	TBD	TBD		AREA RUG		
103	FITTING ROOM	SEE SHEET A421	WOOD	PAINT/WC/WOOD/GLASS	GYPSPUM/PAINT	SEE SHEET A120		CT-02	CARPET CUSTOM GREY SILK	TBD	TBD		AREA RUG	PELOTON TO APPROVE RUG DESIGN, FINISH TO MATCH CT02-ALT	
104	RESTROOM	SEE SHEET A421	STONE/TILE	STONE/TILE	GYPSPUM/PAINT/WOOD	SEE SHEET A120		CT-02 ALT	CARPET GREY SILK	TBD	TBD		AREA RUG	ALTERNATIVE SOLUTION IF CUSTOM CARPET IS NOT AVAILABLE	
104A	SHOWER	SEE SHEET A421	STONE/TILE	STONE/TILE	GYPSPUM/PAINT/WOOD	SEE SHEET A120		CT-03	CARPET CUSTOM GREY SILK	TBD	TBD		AREA RUG	PELOTON TO APPROVE RUG DESIGN	
105	BOH	SEE SHEET A421	WOOD	PAINT	ACT	SEE SHEET A120	GLASS	GL-01	WHITE LAMINATED FABRIC IN GLASS	3FORM	STYLE: HUSH GESSO 2 + WHITE OUT W01, VARIA ECORESIN SANDSTONE/ SANDSTONE F01	N/A	FITTING ROOM AND TRIAL ROOMS	MATERIAL APPLIED OVER SHEATHING	
106	TRIAL ROOM (TREAD)	SEE SHEET A421	WOOD	PAINT/WOOD/GLASS	GYPSPUM/PAINT	SEE SHEET A120		GL-02	MIRROR	ASC GLASS	1/4" THICK CLEAR MIRROR	N/A	FITTING ROOM, RESTROOM AND SHOWER		
106A	TRIAL ROOM (TREAD)	SEE SHEET A421	WOOD	PAINT/WOOD/GLASS	GYPSPUM/PAINT	SEE SHEET A120		GL-03	LAMINATED FROSTED GLASS	BENDHEIM	WHITE LAMINATED GLASS – LEVEL 3 – WHITE BISQUE ATSD-306	N/A	TRIAL ROOM DOORS		
107	TRIAL ROOM (BIKE)	SEE SHEET A421	WOOD	PAINT/WOOD/GLASS	GYPSPUM/PAINT	SEE SHEET A120		GL-05	CLEAR GLASS		VITRO SOLARBAN 72 (2) STARPHIRE CLEAR: 1" THICK CLEAR GLASS, 1/4", 1/2", 1/4" (INSULATED AND TEMPERED) SHGC= 0.30 U FACTOR= 0.29	N/A	FACADE EXTERIOR	AT EXTERIOR STOREFRONT WINDOWS	
107A	TRIAL ROOM (BIKE)	SEE SHEET A421	WOOD	PAINT/WOOD/GLASS	GYPSPUM/PAINT	SEE SHEET A120		GL-06	CLEAR GLASS		VITRO SOLARBAN 72 (2) STARPHIRE CLEAR: 7/8" THICK CLEAR GLASS, 3/16", 1/2", 3/16" (INSULATED AND TEMPERED) SHGC= 0.30 U FACTOR= 0.29	N/A	FACADE EXTERIOR DOORS	AT EXTERIOR STOREFRONT DOORS	
108	HALL	SEE SHEET A421	WOOD	PAINT/WC	GYPSPUM/PAINT	SEE SHEET A120		GL-07	CLEAR GLASS		5/8" THICK CLEAR LAMINATED TEMPERED GLAZING – PPG LOW LEAD, LOW IRON, STARPHIRE OR EQUAL	N/A	FACADE INTERIOR	INTERIOR / MALL STOREFRONTS	
109	STAFF AREA	SEE SHEET A421	WOOD	PAINT	ACT	SEE SHEET A120		METAL	MT-04	WHITE METAL FINE TEXTURED	DRYLAC POWDER COATING	RAL 9003	N/A	FACADE	METAL SIGNS
110	OFFICE	SEE SHEET A421	WOOD	PAINT	ACT	SEE SHEET A120	MT-05		MATTE BLACK METAL FINE TEXTURED	DRYLAC POWDER COATING	RAL 9005, MATT FS	N/A	FACADE EYE-BROW PORTAL	SUPPLIED BY SIGN VENDOR	
111	STORAGE	SEE SHEET A421	WOOD	PAINT	GYPSPUM/PAINT	SEE SHEET A120	MT-06		METAL (CURTAINWALL)	KAWNEER OR EQUAL	KAWNEER CLEARWALL SSI SYSTEM – STRUCTURAL SILICONE GLAZED, 4 SIDED SSG – OUTSIDE GLAZED METAL CLAD WITH KYNAR FINISH "RAL 9005 GRAPHITE BLACK MATT FS"	N/A	CURTAINWALL	(G.C. TO ENGINEER SYSTEM, SEE STRUCTURAL DRAWINGS FOR REQUIRED DESIGN LOADS)	
ROOM FINISH SCHEDULE							MT-06A		STOREFRONT FRAMING	CUSTOM	METAL STOREFRONT ASSEMBLY WITH BREAK METAL WRAP, BLACK KYNAR FINISH TO MATCH MT-05	N/A	MALL STOREFRONT FRAMING	INTERIOR MALL STOREFRONTS	
							MT-07		EXTERIOR WALL PANELS	ALUCOBOND	MCM EXTERIOR WALL PANEL – RAIN SCREEN SYSTEM I – COLOR: DUST CHARCOAL PVD3 / GLOSS 30 (WITH REVEALS)	N/A	EXTERIOR FACADE METAL PANELS AND REVEALS	PROVIDE SHOP DRAWINGS FOR APPROVAL	
							MT-08		INTERIOR WALL PANELS	ALPOLIC	ACM INTERIOR WALL PANEL – DIRECT APPLIED 3/16" METAL COMPOSITE WITH ROLLED BUTT JOINTS COLOR: CNC CHARCOAL	N/A	FACADE ACM PANELS. NO REVEAL	PROVIDE SHOP DRAWINGS FOR APPROVAL	
														EN-01	ENTRY MAT
WC-1	FLOOR MOUNTED WATER CLOSET	KOHLER – GABRIELLE K3615-0 WITH LOW PROFILE BOLT CAPS			WHITE	INSTALL TRIP LEVER ON SINK SIDE, SEE PLAN	SPECIALTY FINISH		SF-2	PLASTIC LAMINATE	FORMICA	COLOR CORE 2, COLOR: NEW WHITE; FINISH: MATTE	N/A	WORK AREA, OFFICE MILLWORK	
WS-1	WATER FILLING STATION	CUSTOM WATER DISPENSER, SINK WITH CRUMB CUP DRAIN, REMOVABLE PERFORATED PAN, T&S GLASS FILLER #B-1210-12-WFK, LEVER ARM, ADJUSTABLE DECK FLANGE AND SHUT OFF LEVER			STAINLESS STEEL CUSTOM BLACK METAL	CUSTOM DISPENSER AND SINK BY "JOHNSON LANCASTER AND ASSOCIATES" (727) 796-5622		WOOD	WD-01	LIGHT GREY WOOD SLATS	CUSTOM	STAIN: RUSTOLEUM SUNBLEACHED	N/A	TRIAL LOUNGE, TRIAL ROOMS WALLS	
WS-2	WATER CHILLER	ELKAY REMOTE CHILLER, 8 GPH, MDL ECH8			–	WATER CHILLER			WD-02	SOLID IPE BRAZILIAN WALNUT WOOD	CUSTOM	NO COLOR SEAL WITH PENETRATING OIL APPROVED FOR HARDWOOD	N/A	SHOWER/ RESTROOM CEILING	
WS-3	WATER FILTER	3M DP290			–	WATER FILTER			WD-03	LIGHT OAK FLOORING	MADERA	STOCKHOLM TRA-PRIME-7" x (2'-10") x 5/8"; UV POLY COMMERCIAL	N/A	SALES AREA FLOOR	
LAV-1	INTEGRATED LAVATORY	8254 LAVATORY			GLACIER WHITE	VANITY SINKS	WOOD BASE	WB-01	WOOD BASE	–	PAINTED WOOD BASE TO MATCH LAMINATE "LA-02"	N/A		PAIN TO MATCH LAMINATE "LA-02"	
SS-1	SERVICE SINK	REGENCY 600S124248			STAINLESS STEEL	GALVANIZED LEG AND SOCKET, PLASTIC BULLET FEET, 3.5" DRAIN BASKET INCLUDED		WB-02	WOOD BASE	–	PAINTED WOOD BASE TO MATCH "PT-01"	N/A		PAIN TO MATCH "PT-01"	
								WB-03	WOOD BASE	–	PAINTED WOOD BASE TO MATCH LAMINATE "LA-03"	N/A		PAIN TO MATCH "LA-03"	
								WB-05	WOOD BASE	–	PAINTED WOOD BASE TO MATCH LAMINATE "LA-05"	N/A		PAIN TO MATCH "LA-05"	
								WB-06	WOOD BASE	–	PAINTED WOOD BASE TO MATCH "PT-02"	N/A		PAIN TO MATCH "PT-02"	
S-1	KITCHENETTE SINK	BOWL: ELKAY LUSTERTONE CLASSIC STAINLESS STEEL 16" X 18-1/2" X 5-3/8", SINGLE BOWL UNDERMOUNT ADA SINK WITH PERFECT DRAIN TWO HANDLE FAUCET; ELKAY ELUHH1316TPD			STAINLESS STEEL	KITCHENETTE SINK		VINYL FLOORING	VCT-2	VINYL	ARMSTRONG TILE CO.	4" COVE STRIP BASE; ITEM# V4115; COLOR: ZINC DMC: 4"W BASE	N/A	B.O.H.	BASE AT B.O.H AS NOTED
P-05	GRAB BAR – 42"	CAMCO STRAIT WITH SNAP FLANGE 150 SERIES			MATTE BLACK	RESTROOM	VL-03		VINYL FLOORING	CHILEWICH	PATTERN: REED– COLOR: SEASHELL	N/A	TRIAL ROOM FLOORS		
P-06	GRAB BAR – 36"	CAMCO STRAIT WITH SNAP FLANGE 150 SERIES			MATTE BLACK	RESTROOM	PAINT	PT-01	WHITE	BENJAMIN MOORE	CHANTILLY LACE: OC-65	N/A	SEE PLANS AND ELEVATIONS	WATER RESISTANT PAINT AT TOILET AND SHOWER ROOMS	
P-07	TOILET TISSUE DISPENSER	WINGITS WITSQ0TPH			MATTE BLACK	RESTROOM		PT-02	MATTE BLACK	BENJAMIN MOORE	RAL 9005	N/A			
P-08	MIRROR	CUSTOM			SEE ELEV.	RESTROOM AND SHOWER		PT-03	GREY	BENJAMIN MOORE	2124-10 (MATT) WROUGHT IRON – EXTERIOR MASONRY APPLICATION	N/A	EXTERIOR FACADE		
P-09	HAND DRYER	DYSON AIRBLADE V-HU02			WHITE	RESTROOM AND SHOWER		PT-04	BLACK	BENJAMIN MOORE	3132-10– BLACK	N/A	RETURN WALL AT PRE TRIAL LOUNGE		
P-14	GRAB BAR – 18"	CAMCO STRAIT WITH SNAP FLANGE 150 SERIES			MATTE BLACK	RESTROOM		PT-05	TO MATCH WD-02	BENJAMIN MOORE	2096-10 SEED BROWN	N/A	CEILING ABOVE WOOD SLATS IN RESTROOM/ SHOWER	WATER RESISTANT PAINT AT TOILET AND SHOWER ROOMS	
P-14A	GRAB BAR – 12"	CAMCO STRAIT WITH SNAP FLANGE 150 SERIES			MATTE BLACK	SHOWER	CEILING	CE-01	ACOUSTIC TILE	ARMSTRONG TILE CO.	2' X 2' ULTIMA BEVELED TEGULAR TILE		CLOSETS		
P-15	GARMENT HOOK	MOEN YB 0403BL			MATTE BLACK	RESTROOM AND SHOWER		CE-02	ACOUSTIC TILE	ARMSTRONG TILE CO.	SUPRAFINE XL 9/16" EXPOSED TEE (WHITE) WITH ULTIMA LAY-IN TEGULAR TILE #1964		B.O.H./ OFFICE		
P-16	GRAB BAR – 50"	CAMCO STRAIT WITH SNAP FLANGE 150 SERIES			MATTE BLACK	SHOWER	FABRICS	FB-01	GREY TEXTURED FABRIC	MOMENTUM TEXTILES	PATTERN: COVER CLOTH COLOR: PLATINUM		PRIVATE LOUNGE SEATING PAD		
P-17	LINEAR TROUGH LOW PROFILE FLOOR DRAIN	SCHLUTER KERDI-LINE – FRAMELESS TILEABLE – KL10RE 90 BOTTOM OUTLET			MATCH TILE	SHOWER		FB-02	TAN AGED LEATHER	GLOBAL LEATHERS	VIENNA COGNAC				
P-18	SHOWER CONTROLS, HEAD AND HAND SPRAY	OVERHEAD SHOWER: CALIFORNIA FAUCETS (CF) SH-162-10.20 2GPM OVERHEAD, 4" SHOWER ARM; CF 9110-4-BLK HAND SHOWER: CF 145-155.20 2GPM THERMOSTATIC MIXER VALVE: CF TH52-R THERMOSTATIC MIXER TRIM: CF TO- TH2L-77 WALL BAR SET: CF 9128 R INCLUDES BAR, OUTLET AND HOSE			MATTE BLACK	SHOWER		LAMINATE	LA-01	WHITE MATTE	FORMICA	948, MATTE 58	N/A	SHOWER ROOM CABINETRY	
									LA-02	BLACK MATTE COLOR CORE	WILSONART	TRACELESS FINISH– BLACK VELVET– 15505-31	N/A	SALES AREA	
							LA-03		LIGHT OAK LAMINATE	WILSONART	STANDARD LAMINATE– BEIGEWOOD 7850-60– MATTE FINISH	N/A	SALES AREA		
							LA-04		FABRIC LOOK LAMINATE	MOMENTUM TEXTILES	PATTERN: COVER CLOTH COLOR: PLATINUM	N/A	SALES AREA		
P-19	SHOWER BENCH	STEAMIST TILT-UP BATH SEAT MODEL SBS-ADA. (24" X 15")			WOOD / CHROME	SHOWER	WALL COVERING	LA-05	BLACK WOOD LAMINATE	FORMICA	8848 BLACKENED LEGNO, MATTE 58	N/A	SALES AREA COMMUNITY WALL AND BRAND INTRO MILLWORK		
								VL-01	FABRIC WALL COVERING	DESIGNTEX	STORM CLOUD 5151-803		TRIAL LOUNGE AND TRIAL ROOMS		
P-20	SHOWER CORNER BASKET	MOEN YB0275			MATTE BLACK	SHOWER	FLOOR TILE / WALL TILE	VL-02	GREY FABRIC	STINSON	AERIE AIE 62 DEW		SALES FIXTURES		
P-21	FAUCET	LACAVA EX11– DECK MOUNTED ELECTRONIC FAUCET			44– MATTE BLACK	VANITY SINKS		TL-01	TEXTURED GREY STONE	STONESOURCE	OTTO BIANCO NATURAL PORCELAIN– 24" X 48" X 3/8" THICK (GROUT COLOR MAPEI 93 WARM GRAY)	N/A	BOH, RESTROOM and SHOWER	USE LATCRETE 254 PLATINUM OR EQUAL FOR MORTAR BED IN CEILING APPLICATIONS	
P-22	SINK DRAIN	CF 9053L & 9053L-D			MATTE BLACK	VANITY SINKS		TL-02	TEXTURED DARK GRAY TILE	STONESOURCE	GROUND FLOOR ANTRACITE NATURAL 36X36	N/A	SALES AREA FLOORING		
P-23	SOAP DISPENSER	LACAVA EX13– DECK-MOUNT SOAP DISPENSER			44– MATTE BLACK	VANITY SINKS		TL-03	GREY PORCELAIN WOOD	STONESOURCE	GREENTECH – CHALK MATTE PORCELAIN– 6" X 48" X 3/8" THICK 12" X 48" X 3/8" AT TRIAL LOUNGE THRESHOLDS (GROUT COLOR MAPEI 93 WARM GRAY)	N/A	LOUNGE AND HALL AREA FLOORING		
								TL-04	WHITE METRO TILE	STONESOURCE	1 COLOR I TALCO GLOSS: 2"X9"	N/A	B.O.H. (KITCHEN BACKSPLASH)		
								TL-05	TEXTURED BLACK STONE	STONESOURCE	OTTO FANGO–NATURAL PORCELAIN– 24"X48" (GROUT COLOR MAPEI 09 GRAY)	N/A	B.O.H. (EXIT PATH)		
								TL-06	TEXTURED BLACK STONE	PORCELANOSA	TOWN BLACK NATURE	N/A	STOREFRONT BASE TILE (≥ 1'-0" HEIGHT)		
PLUMBING FIXTURE and ACCESSORY SCHEDULE								TL-08	DARK GRAY PORCELAIN STONE	STONESOURCE	LAMINAM 12+ – CALCE NERO – NATURAL FINISH – 64" x 128" SLAB X 12MM THICK	N/A	STOREFRONT CLADDING		
							TL-09	TEXTURED BLACK STONE	TBD	TBD	N/A	STOREFRONT BASE TILE (≤ 1'-0" HEIGHT)			
							COUNTER TOPS	ST-01	STONE COUNTER TOP	CORIAN	LIMESTONE PRIMA SOLID SURFACE	N/A	BOH KITCHEN AREA AND OFFICE		
ST-02	WHITE SOLID SURFACE MATERIAL	CORIAN / DUPONT	GLACIER WHITE	N/A	RESTROOM AND SHOWER COUNTERS										
ST-03	BLACK SOLID SURFACE MATERIAL	CORIAN / DUPONT	DEEP NOCTURNE SEMI GLOSS	N/A	WATER FILLING STATION										
PAINT FINISH SPECIFICATIONS							FINISH and MATERIAL SCHEDULE								
LOCATION		PAINT FINISH SPECIFICATION													
WALLS		BM – ULTRA SPEC SCUFF-X INTERIOR EGGSHELL FINISH 485													
CEILINGS		BM –ULTRA SPEC 500 INTERIOR FLAT FINISH– N536													
RESTROOM, SHOWER, WET AREAS		BM – AURA BATH & SPA WATERBORNE INTERIOR PAINT MATTE FINISH 532													
WOOD TRIM		BM – ULTRA SPEC 500 – SEMI-GLOSS													

CLIENT



PELOTON

ARCHITECT



HOWELL BELANGER CASTELLI ARCHITECTS

122 West 27th Street, 4th Floor

122 West 27th Street, 4th Floor

tel. (212) 647-0011

tel. (212) 647-0011

www.hbcarch.com

MEP, FIRE PROTECTION AND STRUCTURAL ENGINEER

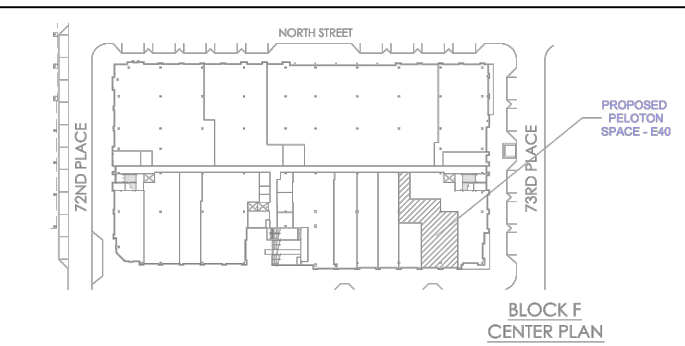
THORSON BAKER + ASSOCIATES

3030 West Streetsboro Road

3030 West Streetsboro Road

Richfield, Ohio
tel. (330) 650-6689Richfield, Ohio
tel. (330) 650-6689

www.thorsonbaker.com



SPACE - E40
BLOCK 'F', GROUND LEVEL
SCOTTSDALE QUARTER
SCOTTSDALE, AZ

SUBMISSIONS

DESCR	DATE
-------	------

Permit 06/08/20

Downloaded from <http://ajphaphysocpharm.sagepub.com/> at 11:06 11 November 2014

[illegible]

These plans are an instrument of service and the property of the Architect, infringements will be prosecuted.

General Contractor to verify all conditions and dimensions at the premises. Discrepancies shall be reported to the Architect prior to the commencement of any work.

PROJECT NAME AND LOCATION

Scottsdale Quarter
Scottsdale, AZ
Space # E40

DRAWING DESCRIPTION:

SCHEDULES

FINISH, ROOM and PLUMBING

PROFESSIONAL SEAL

HBC PROJECT NO: 19065

A-005



PELOTON

PELOTON

TOGETHER
WE GO FAR

WORKOUTS THIS FALL
1 2 4 5 7 8

PELOTON

PELOTON

Zinburger
wine & Burger Bar

Horiana

HER
FAR

THIS MONTH

4 5 6 . 7 9





PELOTON

L'OCCITANE
EN PROVENCE

WARBY PARKER
BONOBOS