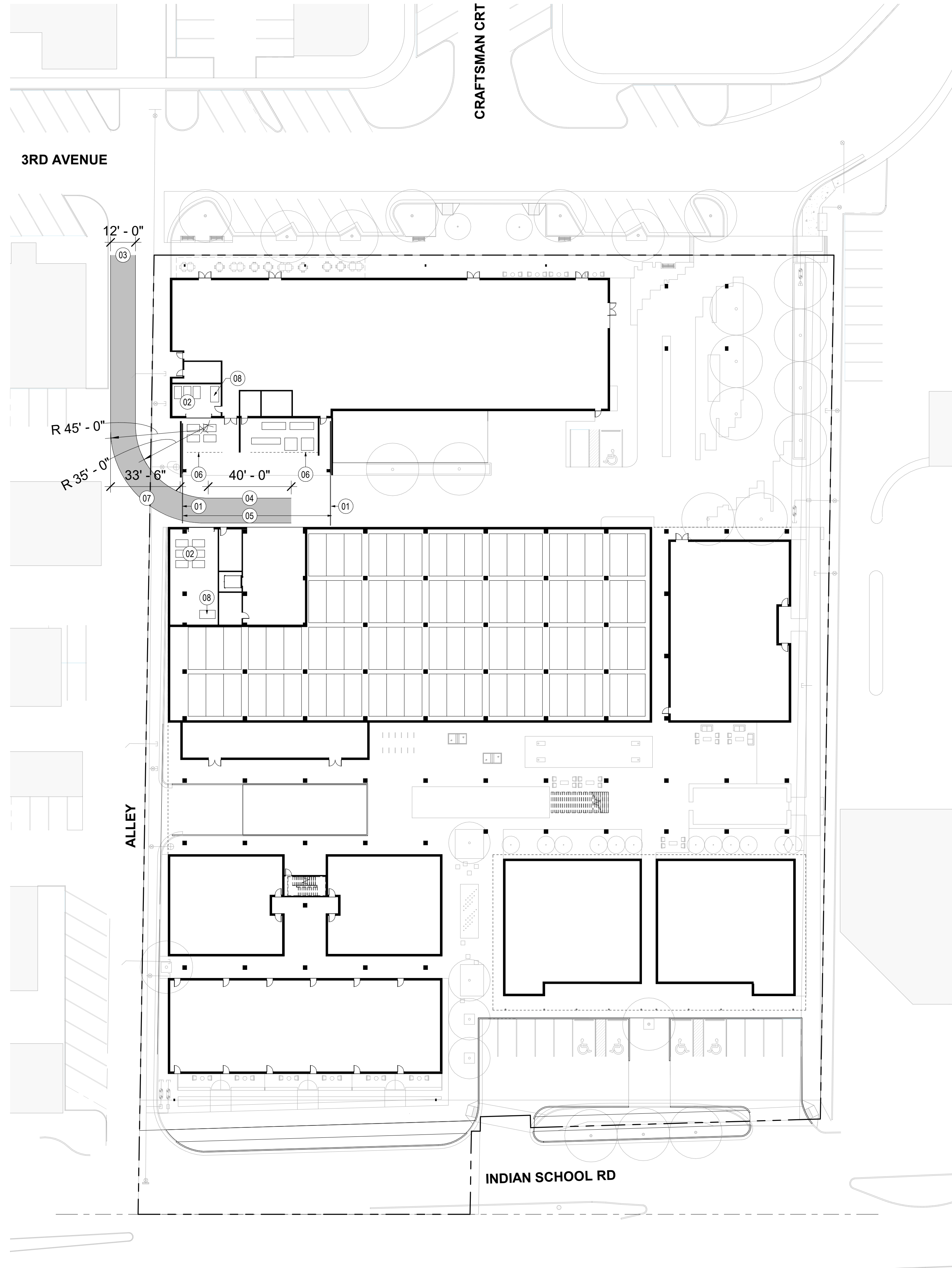


9/28/2020 4:56:35 PM BIM 360://057.6850.000 - PEG - Indian School + 3rd Avenue/The Triangle R20 - Architecture.rvt



REFUSE CALCULATIONS

PRIVATE WASTE MANAGEMENT PLAN

RESTAURANTS AND BARS THAT SERVE FOOD MUST PROVIDE ENCLOSURES WITH GREASE CONTAINMENT AREAS IN ACCORDANCE WITH THE C.O.S. MAG DETAILS AND TABLE 2-1.311.

A MAXIMUM 100 FEET DISTANCE FOR BUILDING SERVICE EXIT TO REFUSE ENCLOSURE.

PROVIDE A PATH OF TRAVEL FOR THE REFUSE TRUCK ACCOMMODATES A MINIMUM VEHICLE OF TURNING RADIUS OF 45 FEET, AND VEHICLE LENGTH OF 40 FEET.

REFUSE ENCLOSURE(S) AND APPROACH PAD TO BE LEVEL, WITH A MAXIMUM OF A TWO PERCENT SLOPE.

TABLE 2-1.311. B

USE	REQUIRED NUMBER OF REFUSE ENCLOSURES WITHOUT RECYCLING	REQUIRED NUMBER OF REFUSE ENCLOSURES WITH RECYCLING
Non-Residential Development	1 enclosure for each 20,000 square feet of building space or portion thereof per COS Standard Details #2146-1 or 2147-1	2 enclosures for each 30,000 square feet of building space or portion thereof per COS Standard Details #2147-1 or 2147-2
Apartments & Condominiums	1 enclosure for every 20 units or portion thereof per COS Standard Details #2146-1 or 2147-1	2 enclosures for every 30 units or portion thereof per COS Standard Details #2146-1 or 2147-1

HOTEL (NON-RESIDENTIAL):

REQUIRED CONTAINERS WITHOUT RECYCLING:
100,000 SF / 20,000SF = **5 ENCLOSURES**

REQUIRED CONTAINERS WITH RECYCLING:
100,000 SF / 30,000 SF = 3.33 X 2 = **7 ENCLOSURES**

ENCLOSURES PROVIDED: 2 (TRASH COMPACTION RATIO OF 4:1)

RESIDENTIAL (APARTMENT & CONDOMINIUMS):

REQUIRED CONTAINERS WITHOUT RECYCLING:
230 UNITS / 20 = **12 ENCLOSURES**

REQUIRED CONTAINERS WITH RECYCLING:
230 UNITS / 20 = **16 ENCLOSURES**

ENCLOSURES PROVIDED: 4 (TRASH COMPACTION RATE OF 4:1)

NOTE: THERE WILL BE A PRIVATE WASTE MANAGEMENT PLAN THAT INCLUDES INCREASED FREQUENCY OF TRASH PICK-UP.

SELF-CONTAINED COMPACTORS

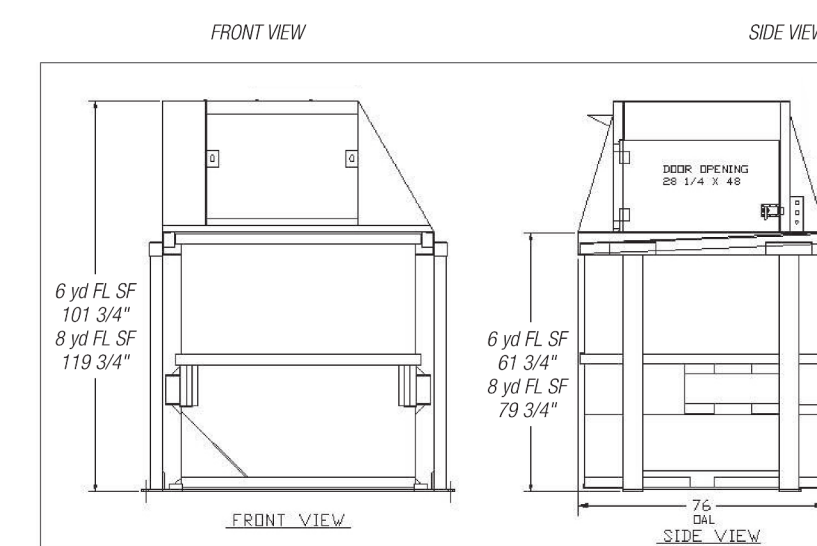
Untouchable VIP™ and VIP FL/3 Self-Contained Compactors

Dimensions and Specifications

Specifications	
Charge Box Capacity	
[Mfr. Rating]	0.72 cu yd / 0.55 m³
[WASTEC Rating]	0.54 cu yd / 0.41 m³
Clear Top Opening	23.5" L x 46" W / 597mm x 1168mm
Performance Characteristics:	
Cycle Time	30 sec. / 30 sec.
Total Normal Force	26,400 lbs. / 11,975 kg
Total Maximum Force	30,200 lbs. / 13,699 kg
Electrical Equipment:	
Electric Motor 3/80/230-460	3 hp / 2.2 kW
Electric Control Voltage	120 VAC / 120VAC
Panel Box Assembly	UL® and CUL® Listed
UL® and CUL® Listed	Key Operated / 120 VAC
All Circuits Fused	2-Button Station Start/Stop
Hydraulic Equipment:	
Hydraulic Pump	3 gpm / 11.4 L/min
Normal Pressure	15.3 psi / 1.0 bar
Maximum Pressure	17.5 psi / 1.2 bar
Hydraulic Cylinders (2) - Bore	4" / 102mm
- Rod	2" / 51mm

Dimensions

VIP FL/3



VIP FL/3 dimensions		
Feed height	46.375"	1178mm
Overall height	66.375"	2194mm
Overall width	96"	2438mm
Overall depth	60"	1524mm
Container weight	675 lbs.	306 kg
Complete assembly weight	3375 lbs.	1531 kg

SHEET NOTES

- 01 DECORATIVE SLIDING GATE
- 02 REFUSE CONTAINER STORAGE
- 03 REFUSE TRUCK PATH
- 04 REFUSE VEHICLE
- 05 SERVICE YARD CONCRETE PAD. OPEN TO SKY ABOVE.
- 06 SCREEN WALL
- 07 REFUSE VEHICLE BACK-UP DISTANCE
- 08 REFUSE COMPACTOR

THE TRIANGLE

7120 E INDIAN SCHOOL RD,
SCOTTSDALE, AZ 85251

- CASE PRE-APP NUMBER -
63-PA-2020

Gensler

2575 E Camelback Road
Suite 175
Phoenix, AZ 85016
United States
Tel 602.523.4900
Fax 602.523.4949

SYDNOR

4806 N 78TH Place
Scottsdale, AZ 85251
United States
Tel 480.206.4593

Date	Description
8/28/20	Resubmittal

Seal / Signature

NOT FOR CONSTRUCTION

Project Name
3RD AVENUE + INDIAN SCHOOL
ROAD - SCOTTSDALE, AZ

Project Number
057.6850.000

Description
REFUSE PLAN

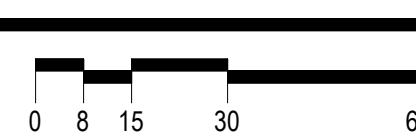
Scale
1" = 30'-0"



21.h

01 REFUSE PLAN

SCALE: 1" = 30'-0"



COS STAMP