

# EXTERIOR BUILDING MATERIALS & SAMPLE BOARD

porcelain tile (wt-1)  
color: white plane  
by stonepeak



stucco shown  
for texture only



sand finish stucco (stc-1)  
la habra  
painted (pt-1) de6227  
LRV 59  
muslin  
by dunn edwards

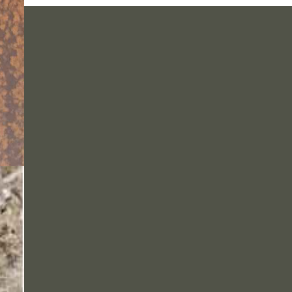


4" w. engineered wood  
siding; stained; color: natural

flat metal panel w/  
mottled/corten finish by  
western states metals



accent paint (pt-2)  
color: urbane bronze  
7048 LRV 8  
by sherwin  
williams



glass guardrail  
(glz-2)  
color: clear  
by: crl



insulated, low-e glazing (glz-1) gray  
by virto architectural glass

slim profile aluminum doors and  
windows (alum-1)  
clear anodized  
by arcadia



textured cmu trendstone (cmu-1)  
color: durango west  
by trenwyth industries

7363 N. 2nd ST SCOTTSDALE RD  
SCOTTSDALE, AZ 85257  
SEPTEMBER, 8th 2021

PEPIN RESTAURANT REMODEL

7340 EAST MAIN STREET #210  
SCOTTSDALE, ARIZONA 85251  
MADE WITH ALINE.COM

**ALINE**  
ARCHITECTURE CONCEPTS

29-DR-2021  
**STIPULATION SET**  
**RETAIN FOR RECORDS**  
**APPROVED**

11/04/2021  
DATE

*[Signature]*  
APPROVED BY