

WestWorld Sports Complex

36-DR-2021

Development Review Board

10/21/2021

Coordinator: Meredith Tessier



Context Aerial

36-DR-2021



Detail Aerial

36-DR-2021

Godge Earth



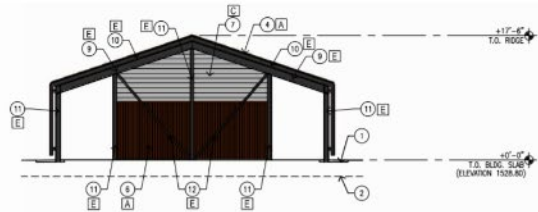
Existing Zoning

36-DR-2021



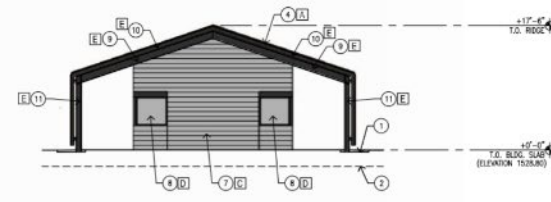
Site Plan

36-DR-2021



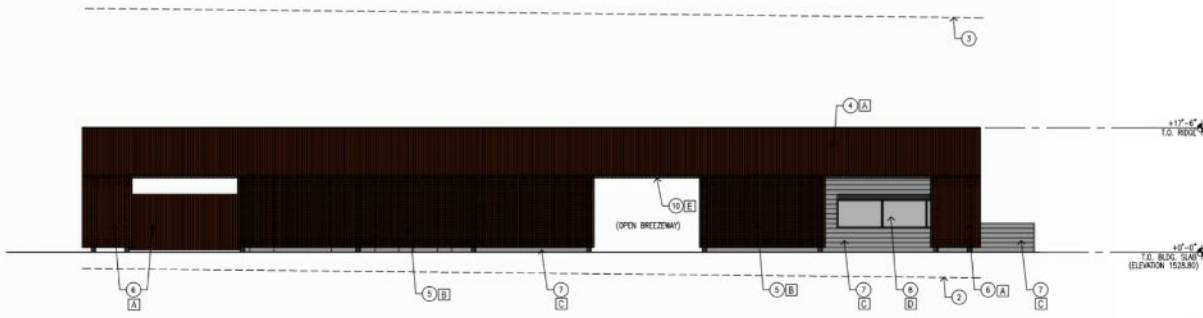
BUILDING ELEVATION - NORTHWEST 4

1/8" = 1'-0"



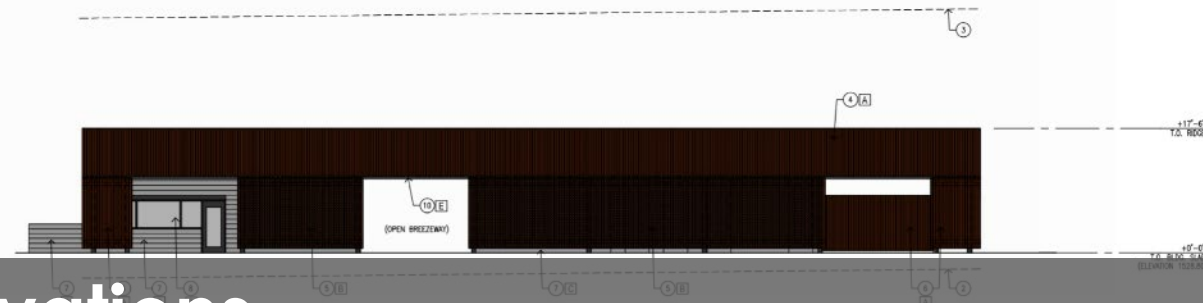
BUILDING ELEVATION - SOUTHEAST 3

1/8" = 1'-0"



BUILDING ELEVATION - SOUTHWEST 2

1/8" = 1'-0"



BUILDING ELEVATION - NORTHEAST

1/8" = 1'-0"

Building Elevations

36-DR-2021

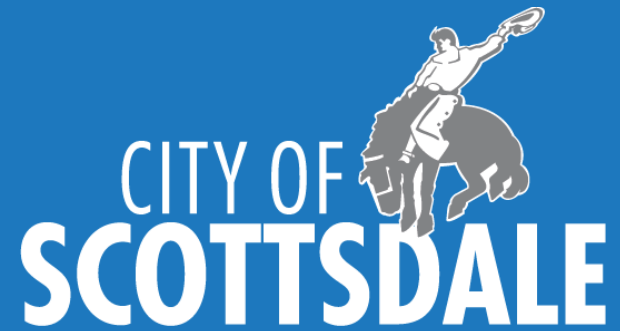


Landscape Plan

36-DR-2021

Action Requested

Request for approval of the site plan, landscape plan, building elevations, lighting plan, cuts and fills plans for excavation over 8 feet in depth, and 1,760 square feet of building area on a +/-29-acre site.



WestWorld Sports Complex

36-DR-2021

Development Review Board

10/21/2021

Coordinator: Meredith Tessier

EXTERIOR FINISH LEGEND

- A** EXPOSED FASTENER METAL ROOFING SYSTEM, CORTEN STEEL, COLOR: NATURAL RUST WEATHERED FINISH (LRV & CHROMA UNAVAILABLE)
- B** PERFORATED EXPOSED FASTENER METAL ROOFING SYSTEM, CORTEN STEEL, COLOR: NATURAL RUST WEATHERED FINISH (LRV & CHROMA UNAVAILABLE)
- C** 8 X 8 X 16 NORMAL WEIGHT C.M.U., RUNNING BOND, W/ CLEAR SEALER, COLOR: STANDARD NATURAL GRAY
- D** DARK BRONZE ANODIZED ALUM. STOREFRONT W/ 1" INSULATED GLAZING (GUARDIAN GLASS, SUPERNEUTRAL 54 ON CRYSTALGRAY OR EQ.)
- E** HOLLOW METAL DOORS & FRAMES / STRUCTURAL STEEL, COLOR: DUNN EDWARDS, JET, DE6378, SEMI-GLOSS OR EQ. (LRV 9, MUNSELL VALUE: 3.5, MUNSELL CHROMA: 0.1)

(hole pattern) **B**

A B

E

EXTERIOR FINISH LEGEND

- A** EXPOSED FASTENER METAL ROOFING SYSTEM, CORTEN STEEL, COLOR: NATURAL RUST WEATHERED FINISH (LRV & CHROMA UNAVAILABLE)
- B** PERFORATED EXPOSED FASTENER METAL ROOFING SYSTEM, CORTEN STEEL, COLOR: NATURAL RUST WEATHERED FINISH (LRV & CHROMA UNAVAILABLE)
- C** 8 X 8 X 16 NORMAL WEIGHT C.M.U., RUNNING BOND, W/ CLEAR SEALER, COLOR: STANDARD NATURAL GRAY
- D** DARK BRONZE ANODIZED ALUM. STOREFRONT W/ 1" INSULATED GLAZING (GUARDIAN GLASS, SUPERNEUTRAL 54 ON CRYSTALGRAY OR EQ.)
- E** HOLLOW METAL DOORS & FRAMES / STRUCTURAL STEEL, COLOR: DUNN EDWARDS, JET, DE6378, SEMI-GLOSS OR EQ. (LRV 9, MUNSELL VALUE: 3.5, MUNSELL CHROMA: 0.1)

GUARDIAN® BUILD WITH LIGHT®

D

D

CITY OF SCOTTSDALE WESTWORLD SPORTS COMPLEX
Exterior Building Color & Material Sample Board 2 of 2

Material Board

36-DR-2021



VICINITY MAP

**CITY OF SCOTTSDALE
WESTWORLD SPORTS COMPLEX**
PARCEL ADDRESS: 9875 E. McDowell Mountain Ranch Road,
QSR 35-51

Contours Table			
Number	Minimum Elevation	Maximum Elevation	Color
1	-14.000	-13.000	Red
2	-13.000	-12.000	Red
3	-12.000	-11.000	Red
4	-11.000	-10.000	Red
5	-10.000	-9.000	Orange
6	-9.000	-8.000	Yellow
7	-8.000	-7.000	Yellow
8	-7.000	-6.000	Yellow
9	-6.000	-5.000	Yellow
10	-5.000	-4.000	Light Green
11	-4.000	-3.000	Light Green
12	-3.000	-2.000	Light Green
13	-2.000	-1.000	Light Green
14	-1.000	0.000	Light Green
15	0.000	1.000	Light Green
16	1.000	2.000	Light Green
17	2.000	3.000	Light Green
18	3.000	4.000	Light Green
19	4.000	5.000	Light Green
20	5.000	6.000	Light Green
21	6.000	7.000	Light Green
22	7.000	8.000	Light Green
23	8.000	9.000	Light Green
24	9.000	10.000	Light Green
25	10.000	11.000	Light Green



DATE: _____ REVISION: _____ BY: _____

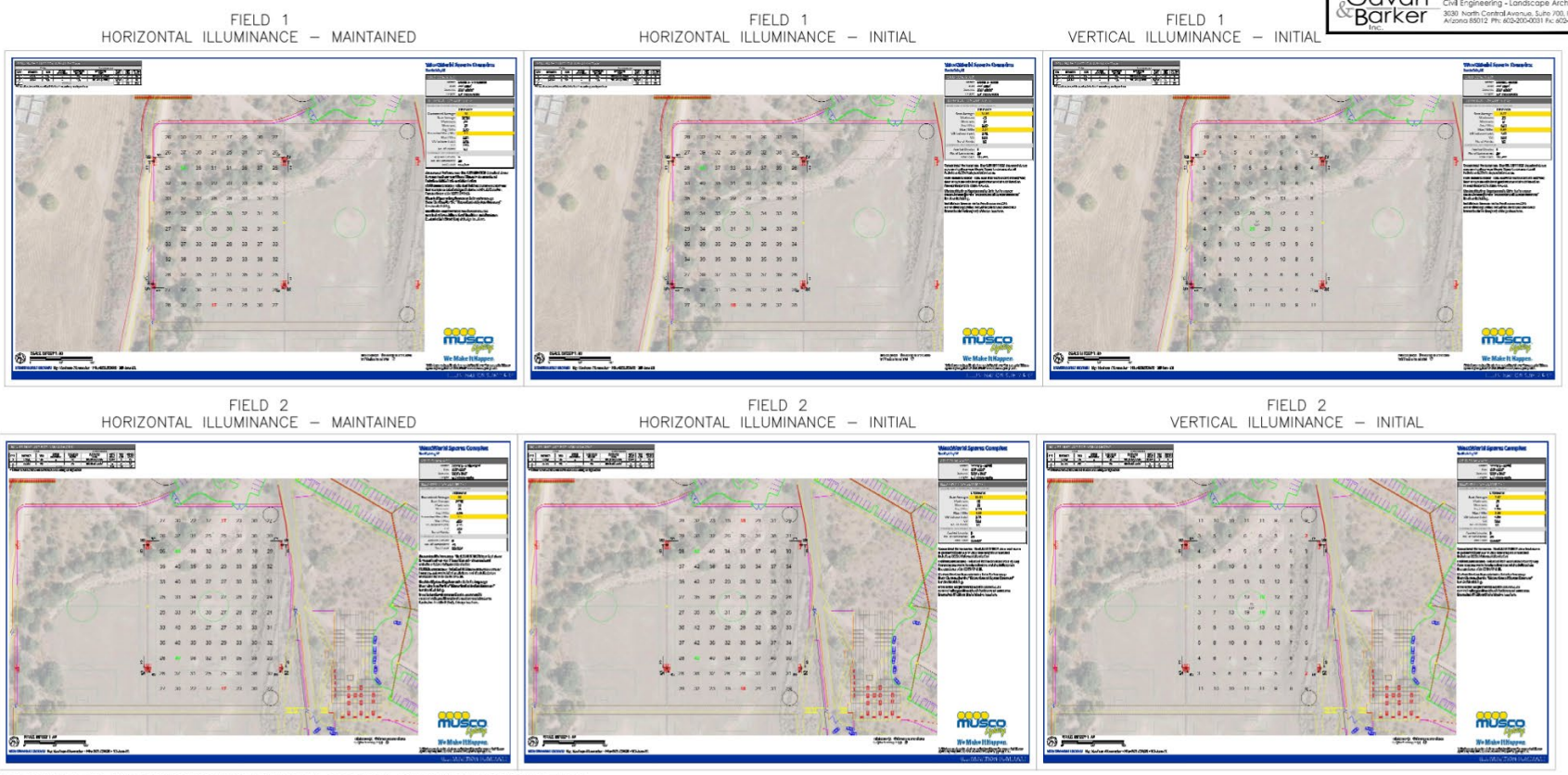
ENGINEER: PUBLIC WORKS
CITY OF SCOTTSDALE
CAPITAL PROJECT
MANAGEMENT

DRAWN BY: CUTS AND FILLS SITE PLAN

PROJECT: CITY OF SCOTTSDALE
WESTWORLD SPORTS COMPLEX

Cuts and Fills Plan

36-DR-2021



PHOTOMETRIC ANALYSIS NOTES (TYPICAL FOR ALL CALCULATION SHEETS):

ALL INITIAL ILLUMINANCE CALCULATIONS ARE PERFORMED WITH A MAINTENANCE FACTOR OF 1.0.

THE MAINTENANCE FACTOR FOR THE HORIZONTAL ILLUMINANCE CALCULATIONS IN THIS PLAN SET IS 0.95. THIS IS BASED ON LED LIGHTING TECHNOLOGY AND HAS BEEN ADJUSTED FROM THE DRB STIPULATION OF 0.8 WHICH IS BASED ON METAL HALIDE LIGHTING TECHNOLOGY. THE LED 0.95 MAINTENANCE FACTOR IS THE EQUIVALENT OF THE METAL HALIDE 0.8 MAINTENANCE FACTOR.

THE MAXIMUM TO MINIMUM UNIFORMITY RATIO FOR HORIZONTAL FOOT-CANDLES MEETS THE IESNA RECOMMENDATION OF 3.0 TO 1.0 OR LESS FOR A CLASS III FACILITY. THE IESNA DOES NOT MAKE A RECOMMENDATION FOR VERTICAL UNIFORMITY RATIO FOR A CLASS III FACILITY.

ALL VERTICAL CALCULATIONS ARE MADE BY HAVING THE METER FACING INWARD TOWARD THE FIELD AND AIMED AT 90-DEGREES ABOVE NADIR. ALL LIGHTING FIXTURES WILL BE INSTALLED WITH AN INTERLOCK SYSTEM THAT PREVENTS OPERATION OF LIGHTS WHEN THE FIELDS ARE NOT ACTUALLY IN USE. ALL SPORTS LIGHTING TO REMAIN OFF BETWEEN THE HOURS OF 10:30PM (PARK CLOSE) AND 6AM TO THE SATISFACTION OF CITY STAFF.



DATE	REVISION	BY

PRELIMINARY NOT FOR CONSTRUCTION

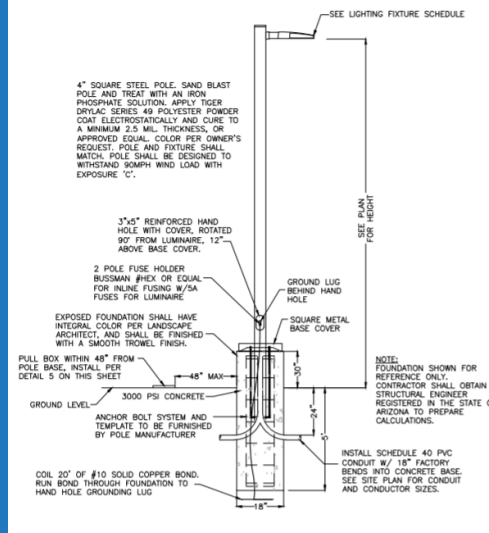
PUBLIC WORKS CAPITAL PROJECT MANAGEMENT



36-DR-2021

PROJECT NO.	36-DR-2021
DATE	12/15/21
SCALE	AS SHOWN
PROJECT NO.	36-DR-2021
DATE	12/15/21

Photometric Plan



4A LED SPORTS FIELD LIGHT DETAIL FOR NEW POLES
NO SCALE

REMOVABLE POLE CAP.

SPORTS FIELD LIGHT FIXTURES AND SUPPORT RACKS, MUSCO SPORTS LIGHTING, LIGHT STRUCTURE GREEN SERIES, WITH 4000K 70 CRI LED FIXTURES, 480 VOLT, REMOTE DRIVERS LOCATED ON POLE. ALL LIGHT BANKS AS REQUIRED TO MEET SPECIFICATIONS.

TAPERED GALVANIZED STEEL POLE. PROVIDE ACCESS HAND HOLES AS NEEDED FOR EQUIPMENT. POLE SHALL BE DESIGNED TO WITHSTAND 100 MPH WIND LOADS.

SET SCREW.

FINISHED GRADE.

PRE-STRESSED, CENTRICALLY SPUN CONCRETE BASE PER MANUFACTURER REQUIREMENTS. MANUFACTURER TO PROVIDE STRUCTURAL CALCULATIONS BY ARIZONA REGISTERED STRUCTURAL ENGINEER, AT TIME OF SUBMITTAL.

CONDUIT SIZE AS REQUIRED. SEE SITE PLAN.

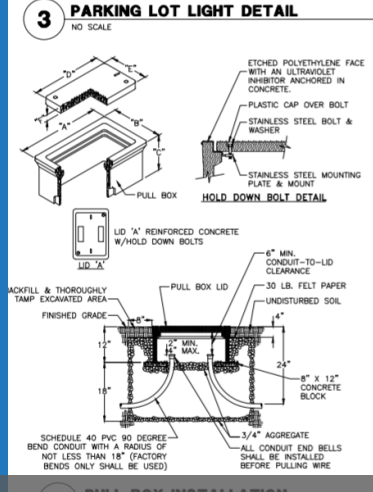
UNDERGROUND ACCESS HOLE.

INTEGRAL POLE GROUNDING SYSTEM PROVIDED BY MANUFACTURER OR 5/8" x 10' COPPER GROUND ROD. SEE SPECIFICATIONS FOR GROUNDING REQUIREMENTS.

* PER MANUFACTURER'S SPECIFICATIONS.

DRIVER ENCLOSURE WITH FUSES FOR EACH FIXTURE (NEMA 3R) LABEL DRIVER TO CORRESPOND TO THE LIGHT FIXTURES IT FEEDS. LABELS SHALL BE METALLIC AND HEAT RESISTANT. LIGHT MANUFACTURER TO PROVIDE WIRE HARNESS TO CONNECT FIXTURES TO DRIVERS. PROVIDE HASP ON ENCLOSURE LATCH FOR PADLOCK. MANUFACTURER TO PROVIDE POLE MOUNTING BRACKET FOR ENCLOSURE WITH STAINLESS STEEL HARDWARE. ENCLOSURE TO BE MOUNTED ON SIDE OF POLE OPPOSITE THE FIELD.

HANDHOLE, SIZED PER MANUFACTURER RECOMMENDATIONS, WITH GROUNDING LUG MOUNTED TO INSIDE OF POLE COVER PLATE TO BE ATTACHED WITH STAINLESS STEEL SECURITY SCREWS.



SPICES INSIDE PULL BOX

WATER RESISTANT SPLICE COVER (SEE DETAIL NOTES).

CUL/AL LISTED MECHANICAL LUG OR BOLTED CONNECTOR OR COMPRESSION CONNECTOR (SEE DETAIL NOTES).

CONDUIT INSIDE. PULL BOX SIZE & TYPE PER PLANS.

CONDUCTOR SIZE & TYPE PER PLANS. LEAVE 2" (MIN.) OF SLACK COILED IN PULL BOX.

ALL CONDUIT END BELLS SHALL BE INSTALLED BEFORE PULLING WIRE (TYP).

DETAIL NOTES:

1. THE PULL BOX SHALL BE MADE OF A HIGH DENSITY REINFORCED CONCRETE MATERIAL WITH END & SIDE KNOCKOUTS, & NON-SETTLING SHOULDERS TO MAINTAIN GRADE, MANUFACTURED WITH APPROXIMATE DIMENSIONS AS SHOWN.
2. STEEL REINFORCEMENT SHALL BE AS REGULARLY USED IN STANDARD PRODUCTS OF THE RESPECTIVE MANUFACTURER.
3. COVER LETTERING SHALL BE 1" LETTERS CAST IN STANDARD MARKINGS: "ELECTRIC" OR "HIGH VOLTAGE" OR "COMMUNICATIONS", AS REQUIRED.
4. THE PULL BOX SHALL HAVE AN ETCHED POLYETHYLENE FACE WITH AN ULTRAVIOLET INHIBITOR ANCHORED IN CONCRETE.
5. ALL CABLE & CONDUCTOR SPLICES MADE USING CUL/AL LISTED, MECHANICAL LUG OR BOLTED CONNECTOR OR COMPRESSION CONNECTOR, (TYCO ELECTRONICS, NSI INDUSTRIES, ES300 OR APPROVED EQUAL) CONNECTION TO BE INSULATED & MADE WATER RESISTANT WITH TYCO ELECTRONICS GELCAP-SL, NSI INDUSTRIES ESSLK-2/0 OR 3M SCOTCHCAST SPLICE KIT B5 SERIES.

PULLBOX TYPE	PULLBOX LENGTH	PULLBOX WIDTH	PULLBOX HEIGHT				
			"a"	"b"	"c"	"d"	"e"
#1-1/2	19-3/4"	14-1/4"	12"	15-1/2"	10"	1-3/4"	
#2	25-1/8"	15-5/8"	12"	20-3/4"	15-5/8"	2"	



WRIGHT engineering corporation

DATE: _____ REVISION: _____ BY: _____

PRELIMINARY NOT FOR CONSTRUCTION

CITY OF SCOTTSDALE
WESTWORLD SPORTS COMPLEX

PUBLIC WORKS
CAPITAL PROJECT MANAGEMENT

7447 E. INDIAN SCHOOL RD., SCOTTSDALE, ARIZONA 85251

SHEET TITLE: SITE ELECTRICAL DETAILS