

PLANT PALETTE:

TREES:

PARKINSONIA ACULEATA PALO VERDE	SALVAGED FROM ON-SITE SEE EXIST. PLANT INVENTORY	2 TOTAL 4 SALVAGE PLAN
WASHINGTONIA FILIFERA CALIFORNIA FAN PALM	SALVAGED FROM ON-SITE SEE EXIST. PLANT INVENTORY	6 TOTAL 4 SALVAGE PLAN
PHOENIX DACTYLIFERA DATE PALM	25' TRUNK DIAMOND CUT, STRAIGHT TRUNKS	1 TOTAL
CHITALPA TASHKENSIS CHITALPA	36" BOX MINIMUM, STANDARD 12' HT., 6' SP., 2 1/2" CAL.	13 TOTAL
CERCIDIMUM FLORIDUM D.M. DESERT MUSEUM PALO VERDE	36" BOX MIN. 12' HT., 6' SP., 3" CAL.	14 TOTAL
QUERCUS VIRGINIANA SOUTHERN LIVE OAK	36" BOX MIN. 12' HT., 7' SP., 3" CAL.	14 TOTAL
ACACIA MULGA MULGA TREE	24" BOX, MATCHING 8' HT., 5' SP., 1 1/2" CAL.	19 TOTAL
CAESALPINIA MEXICANA YELLOW MEXICAN BIRD OF PARADISE	15 GALLON MIN. TREE FORM (6' HT., 2 1/2' SP., 3/4" CAL.)	15 TOTAL

PHOENIX ROEBELLINI  
PYGMY DATE PALM

15 GALLON MIN. 2-3 TRUNK	24 TOTAL
-----------------------------	----------

SHRUBS & VINES:

RUELLIA BRITTONIANA PURPLE RUELLIA	5 GALLON FULL, PAST CAN	73 TOTAL
LEUCOPHYLLUM LANGMANIAE RIO BRAVO SAGE	5 GALLON FULL, PAST CAN	47 TOTAL
CARISSA GRANDIFLORA 'B. BEAUTY' NATAL PLUM	5 GALLON FULL, PAST CAN	123 TOTAL
SALVIA GREGGII RED SALVIA	5 GALLON FULL, PAST CAN	33 TOTAL
CALLISTEMON VIMINALIS 'LITTLE JOHN' LITTLE JOHN BOTTLE BRUSH	5 GALLON FULL, PAST CAN	140 TOTAL
CASSIA STURTI GREEN DESERT CASSIA	5 GALLON FULL, PAST CAN	43 TOTAL
CAESALPINIA FULCHERRIMA RED BIRD OF PARADISE	5 GALLON FULL, PAST CAN	23 TOTAL
TECOMA X HYBRID TECOMA	5 GALLON FULL, PAST CAN	28 TOTAL
DODONAEA VISCOSEA 'PURPUREA' PURPLE HOPSEED BUSH	5 GALLON 30" HT.	78 TOTAL

GROUNDCOVERS AND ACCENTS:

LANTANA MONTIVIDENSIS 'NG.' NEW GOLD LANTANA	5 GALLON FULL, PAST CAN	96 TOTAL
EREMOPHYLLA MINGINEW GOLD OUTBACK SUNRISE	1 GALLON FULL, PAST CAN	99 TOTAL
PARVIFOLIA HESPERALOE RED YUCCA	5 GALLON FULL, PAST CAN	15 TOTAL
ACACIA REDOLENS 'D.C.' DESERT CARPET REDOLENS	5 GALLON FULL, PAST CAN	72 TOTAL
DECOMPOSED GRANITE 'APACHE BROWN'	2" DEEP, 1/2" SCREENED	19,830 SF.
MID-IRON TURF	SODDED	1,385 SF.

PLAN KEY NOTES:

- INTEGRAL COLOR CONCRETE (SCORING AS SHOWN)
- PROPOSED LOCATION FOR MONUMENT SIGN
- MAIN LOBBY ENTRANCE
- FIRE TRUCK TURNING RADIUS 35' DIA. (MIN) 55' DIA. (MAX)
- REFUSE ENCLOSURE W/ OPAQUE GATE
- CONC. SIDEWALK (TYP.)
- INSTALL 2" DEEP, 1/2" SCREENED 'APACHE BROWN' DECOMPOSED GRANITE THRU-OUT PLANTER AREA
- PORTE COCHERE
- BIKE PARKING
- POOL
- SFA
- DECORATIVE VIEW FENCE
- PARTIAL DECORATIVE CMU WALL W/ VIEW FENCE
- STREET LIGHT
- SODDED LAWN
- SIGHT DISTANCE TRIANGLE (NO OBJECTS GREATER THAN 24" IN HEIGHT)
- INTERSECTION AND DRIVEWAY DEPARTURE SIGHT DISTANCE LINE PER C.O.S. FIGURE 5-3-26 (NO OBJECTS GREATER THAN 18' HEIGHT)
- 36" HIGH WALLS
- 2ND STORY LINE
- WATER FEATURE WALL (BOTH SIDES)
- 6" CONCRETE HEADER
- FIREPIT

CITY OF SCOTTSDALE NOTES:

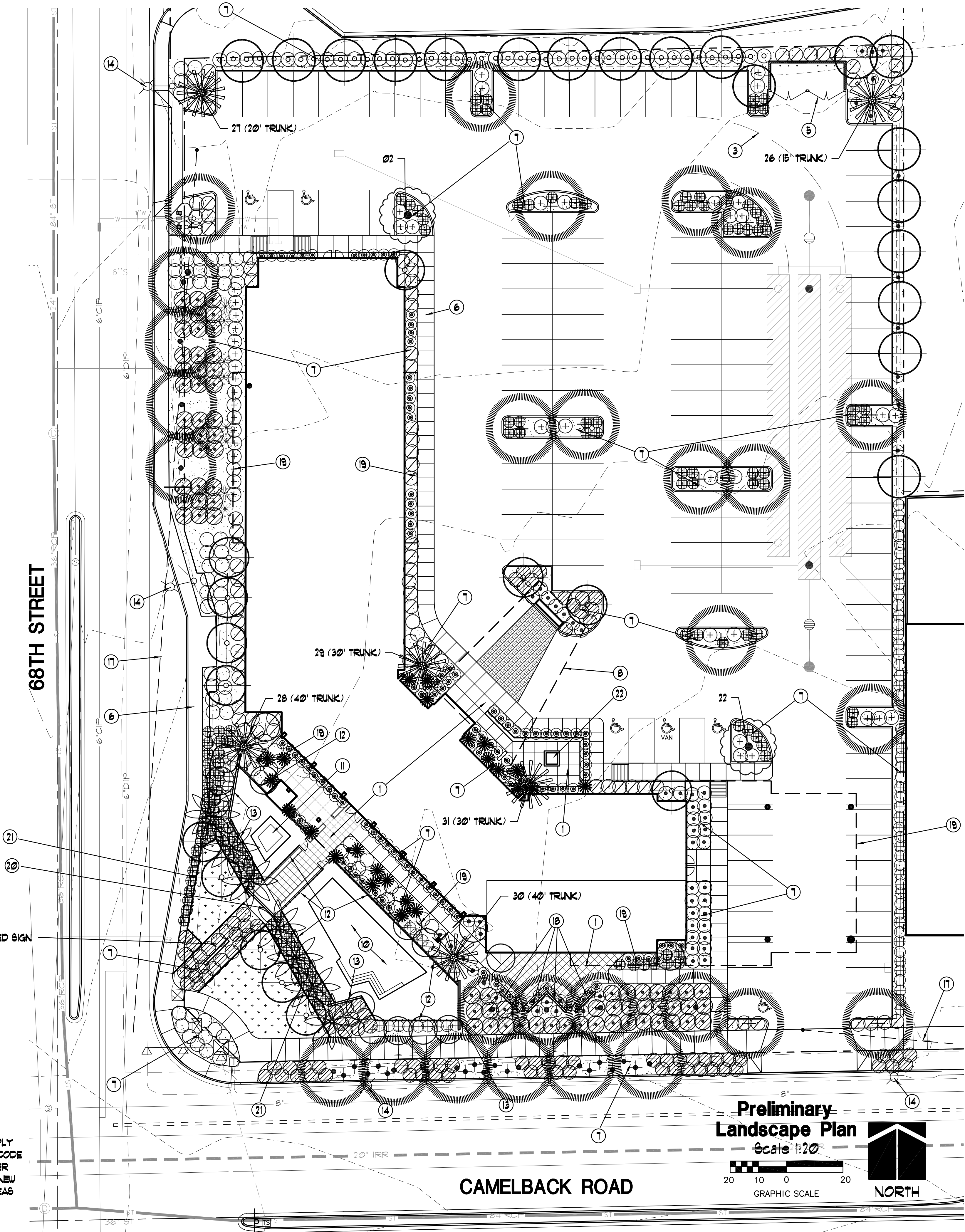
AREA WITHIN THE SIGHT DISTANCE TRIANGLES IS TO BE CLEAR OF LANDSCAPING, SIGNS, OR OTHER VISIBILITY OBSTRUCTIONS WITH A HEIGHT GREATER THAN 15 FEET. TREES WITHIN THE SIGHT TRIANGLE SHALL HAVE A SINGLE TRUNK AND A CANOPY THAT BEGINS AT 8 FEET IN HEIGHT UPON INSTALLATION. ALL HEIGHTS ARE MEASURED FROM NEAREST STREET LINE ELEVATION.

ALL RIGHTS-OF-WAY ADJACENT TO THIS PROPERTY SHALL BE LANDSCAPED AND MAINTAINED BY THE PROPERTY OWNER.

NO LIGHTING IS APPROVED WITH THE SUBMITTAL.

THE APPROVAL OF THESE PLANS RECOGNIZE THE CONSTRUCTION OF A LOW VOLTAGE SYSTEM AND DOES NOT AUTHORIZE ANY VIOLATION OF THE CURRENT CITY OF SCOTTSDALE ADOPTED ELECTRICAL CODE.

GENERAL CONTRACTOR SHALL COMPLY WITH CITY OF SCOTTSDALE REVISED CODE SECTION 49-242. LIMITATION ON WATER FEATURED FOR COMMERCIAL USERS, NEW INDUSTRIAL USERS AND COMMON AREAS OF RESIDENTIAL DEVELOPMENTS.



JOB NUMBER

XXXX

DATE

7-12-19

LANDSCAPE  
PLAN

L-1



GENERAL INVENTORY/SALVAGE NOTES:

THE GENERAL NOTES ARE THE ONLY NOTES APPROVED ON THIS PLAN. ADDITIONAL GENERAL NOTES GENERATED BY THE SEALANT AND PLACED ON THE PLANS ARE NOT APPROVED AS PART OF THIS PLAN AND ARE NOTED AS SUCH ON THE PLANS.

PLANT MATERIALS MUST BE INDIVIDUALLY TAGGED IN THE FIELD AT THE TIME THE INVENTORY PLANS ARE SUBMITTED. TAGGED MATERIAL MUST BE CLEARLY MARKED WITH WATERPROOF INK AND INCLUDE THE NUMBER WHICH CORRESPONDS TO THE NUMBER SHOWN ON THE PLAN. A FIELD REVIEW WILL NOT OCCUR UNTIL CLEARLY MARKED TAGS ARE IN PLACE ON EACH PLANT TO BE INCLUDED IN THE INVENTORY.

TAGS MUST BE ATTACHED SO THAT THEY WILL REMAIN ON THE PLANT FOR THE DURATION OF THE SALVAGE AND NURSERY STORAGE PERIOD. PLANT MATERIALS WITHOUT NUMBERED TAGS IN THE NURSERY WILL NOT BE COUNTED TOWARD THE TOTAL REQUIREMENT FOR THE PROJECT.

ALL SALVAGEABLE MATERIAL IS TO BE CLEARLY FLAGGED WITH TAPE OR PLASTIC TAGS VISIBLE FROM ALL DIRECTIONS. TAGS SHALL BE NUMBERED TO CORRESPOND WITH THE PLANT INVENTORY PLAN AND LEGEND. COLOR CODE AS FOLLOWS:  
RED - SALVAGE AND RELOCATE.  
WHITE - PRESERVE AND PROTECT IN PLACE.  
BLUE - DESTROY, NOT SALVAGEABLE AND CANNOT REMAIN IN PLACE.

CONTACT THE PARKS & RECREATION DEPARTMENT TO VERIFY OWNERSHIP OF ANY PLANT MATERIAL IN THE PUBLIC ROW. PRIOR TO ANY PLANT RE-LOCATIONS OR REMOVALS. OBTAIN WRITTEN PERMISSION FROM THE PARKS AND RECREATION DEPARTMENT PRIOR TO THE RE-LOCATION OR REMOVAL OF ANY CITY PLANT MATERIAL OR EQUIPMENT.

CONTACT THE STREET TRANSPORTATION DEPARTMENT PRIOR TO THE RE-LOCATION OR REMOVAL OF EXISTING PLANT MATERIAL IN THE A.D.O.T. ROW THAT IS ON THE CITY'S SIDE OF THE SOUND WALL. OBTAIN WRITTEN PERMISSION FROM THE STREET TRANSPORTATION DEPARTMENT PRIOR TO THE RE-LOCATION OR REMOVAL OF ANY PLANT MATERIAL OR EQUIPMENT.

A SALVAGE PERMIT SHALL BE OBTAINED AND COMPLETED PRIOR TO THE GRADING AND DRAINAGE PERMIT BEING ISSUED. NO CLEARING OR GRUBBING MAY OCCUR PRIOR TO THE PURCHASE OF THE SALVAGE PERMIT, FIELD APPROVAL OF THE CONSTRUCTION FENCE, AND ALL SALVAGED PLANTS PLACED IN THE NURSERY AND FIELD INSPECTED.

ALL PROTECTIVE FENCING SHALL BE IN PLACE BEFORE ANY EARTH MOVING EQUIPMENT IS MOVED ONTO THE SITE AND BEFORE ANY SALVAGE, CLEARING OR GRUBBING TAKES PLACE. SCHEDULE AN INSPECTION OF CONSTRUCTION FENCE.

ALL MATERIAL TO BE SALVAGED SHALL BE REMOVED AND PLACED IN THE DESIGNATED NURSERY AREA BEFORE ANY CLEARING OR GRADING TAKES PLACE. SCHEDULE AN INSPECTION AFTER SALVAGE IS COMPLETED.

ALL TAGGED MATERIALS MUST REMAIN IN NURSERY OR ON-SITE UNTIL NURSERY CHECK IS APPROVED.

NO NAILS, WIRES OR OTHER OBJECTS THAT DAMAGE THE CAMBium OR CAUSE INJURY TO THE TREE MAY BE USED DURING THE SALVAGE PROCESS. ALL EFFORTS SHALL BE TAKEN BY USING PADDING OR OTHER METHODS TO PRESERVE THE INTEGRITY OF THE BARK.

TREES AND PROTECTED PLANT MATERIAL OR MATERIAL NOTED FOR SALVAGE THAT ARE DESTROYED OR DIE DURING THE SALVAGE, RELOCATION, OR MAINTENANCE PERIOD WILL BE REPLACED WITH A PLANT OF EQUAL OR GREATER SIZE AND TYPE BY THE RESPONSIBLE PARTY A MINIMUM OF 90 DAYS BEFORE THE COMPLETION OF THE PROJECT. NO CERTIFICATES OF OCCUPANCY WILL BE ISSUED BEFORE ALL REQUIRED MATERIAL HAS BEEN REPLACED. ALL REPLACEMENT MATERIAL SHALL BE APPROVED BY THE PLANNING & DEVELOPMENT LANDSCAPE ARCHITECT. A MAXIMUM OF 10% OF THE SALVAGEABLE PLANT MATERIAL WILL NOT BE REQUIRED TO BE REPLACED IF LOST.

ALL REQUIREMENTS OF THE STATE OF ARIZONA, INCLUDING THE NOTICE OF INTENT TO CLEAR LAND, SHALL BE MET NOTWITHSTANDING ANY APPROVALS BY THE CITY OF SCOTTSDALE.

FILE NOTICE OF INTENT (NOI) TO CLEAR LAND WITH THE STATE OF ARIZONA, 602-542-6408. PROVIDE A COPY OF THE NOI PERMIT TO THE INSPECTOR. [HTTP://WWW.AZDAGO.GOV/ESD/CLEARLAND.PDF](http://www.azdago.gov/ESD/CLEARLAND.PDF)

PROVIDE A COPY OF THE COUNTY DUST CONTROL PERMIT TO THE INSPECTOR.

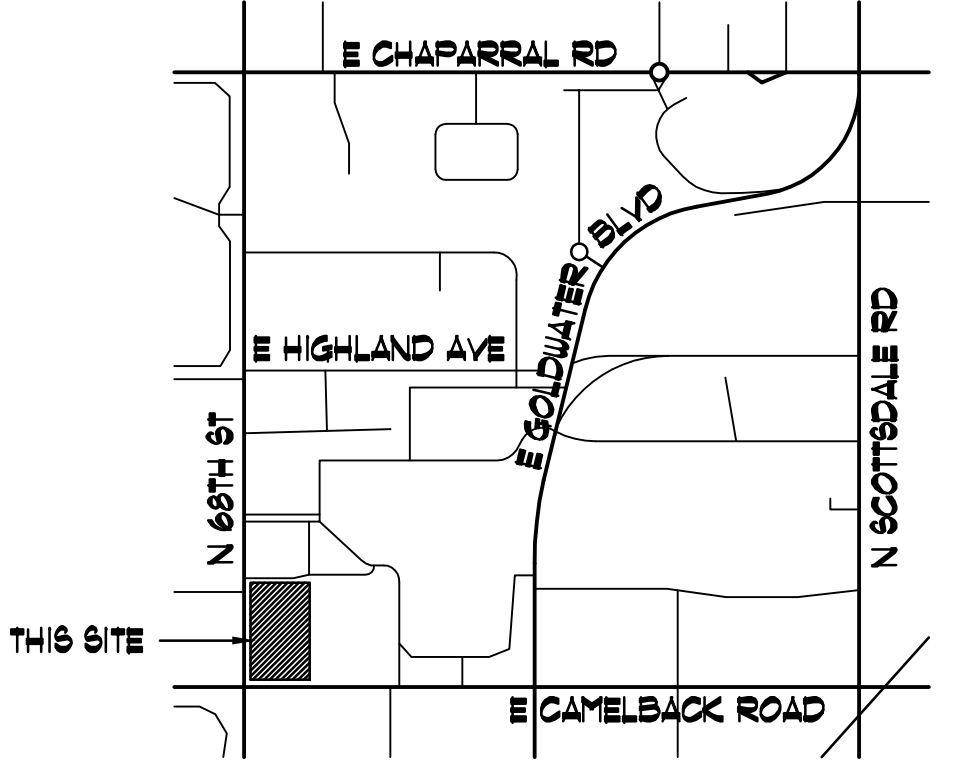
NO SALVAGE MATERIAL SHALL BE REMOVED FROM THE SITE WITHOUT PLANNING & DEVELOPMENT LANDSCAPE ARCHITECT APPROVAL.

KNOWINGLY OR NEGLIGENTLY PROVIDING FALSE OR MISLEADING INFORMATION TO THE CITY OF SCOTTSDALE REGARDING SALVAGEABLE MATERIALS MAY RESULT IN DELAYS AND/OR SUSPENSION OF PERMITS AND INSPECTIONS.

PLAN APPROVAL IS VALID FOR 180 DAYS. PRIOR TO PLAN APPROVAL EXPIRATION, ALL ASSOCIATED PERMITS SHALL BE PURCHASED OR THE PLANS SHALL BE RESUBMITTED FOR EXTENSION OF PLAN APPROVAL. THE EXPIRATION, EXTENSION, AND REINSTATEMENT OF INVENTORY/SALVAGE COMBINATION PLANS AND PERMITS SHALL FOLLOW THE SAME GUIDELINES AS THOSE INDICATED IN THE SCOTTSDALE BUILDING CONSTRUCTION CODE FOR BUILDING PERMITS.

EXISTING PLANT INVENTORY

PLANT NO.	PLANT NAME	SIZE	PLANT CONDITION	REASON FOR NON-SALVAGE	INTENDED DESIGNATION
01	PARKINSONIA ACULEATA (PALO VERDE)	12' C, 15' HT, 25' SP.	UNHEALTHY	DEAD	REMOVE
02	PARKINSONIA ACULEATA (PALO VERDE)	8' C, 15' HT, 20' SP.	GOOD		SALVAGE
03	PARKINSONIA ACULEATA (PALO VERDE)	6' C, 12' HT, 15' SP.	GOOD	VOLUNTEER, NO FORM	REMOVE
04	PARKINSONIA ACULEATA (PALO VERDE)	6' C, 12' HT, 15' SP.	UNHEALTHY	WON'T SURVIVE TRANSPLANT	REMOVE
05	RHUS LANCEA (AFRICAN SUMAC)	16' C, 12' HT, 18' SP.	UNHEALTHY	VANDALIZED, DEAD WOOD	REMOVE
06	RHUS LANCEA (AFRICAN SUMAC)	16' C, 20' HT, 50' SP.	UNHEALTHY	DISEASED, VANDALIZED, DEAD WOOD	REMOVE
07	RHUS LANCEA (AFRICAN SUMAC)	8' C, 20' HT, 30' SP.	UNHEALTHY	SPRAWLING, VANDALIZED	REMOVE
08	GRIVELLEA ROBUSTA (SILK OAK)	24' C, 50' HT, 25' SP.	HEALTHY	TOO LARGE TO SURVIVE TRANSPLANT	REMOVE
09	OLEA EUROPAEA (COMMON OLIVE)	8' C, 15' HT, 25' SP.	HEALTHY	FRUITING OLIVE (SCRUB)	REMOVE
10	RHUS LANCEA (AFRICAN SUMAC)	12' C, 15' HT, 25' SP.	UNHEALTHY	DEAD	REMOVE
11	PARKINSONIA ACULEATA (PALO VERDE)	6' C, 15' HT, 25' SP.	UNHEALTHY	DEAD	REMOVE
12	PARKINSONIA ACULEATA (PALO VERDE)	6' C, 15' HT, 25' SP.	UNHEALTHY	DEAD	REMOVE
13	OLEA EUROPAEA (COMMON OLIVE)	12' C, 20' HT, 25' SP.	HEALTHY	FRUITING OLIVE (NOT DESIREABLE)	REMOVE
14	RHUS LANCEA (AFRICAN SUMAC)	12' C, 20' HT, 25' SP.	UNHEALTHY	DISTRESSED	REMOVE
15	PARKINSONIA ACULEATA (PALO VERDE)	8' C, 20' HT, 20' SP.	UNHEALTHY	DISTRESSED	REMOVE
16	PARKINSONIA ACULEATA (PALO VERDE)	8' C, 18' HT, 30' SP.	UNHEALTHY	DISTRESSED	REMOVE
17	PARKINSONIA ACULEATA (PALO VERDE)	8' C, 12' HT, 10' SP.	UNHEALTHY	VANDALIZED	REMOVE
18	PINUS CANARIENSIS (CANARY ISLAND PINE)	12' C, 45' HT, 10' SP.	HEALTHY		REMAIN
19	RHUS LANCEA (AFRICAN SUMAC)	10' C, 15' HT, 25' SP.	HEALTHY	STORM DAMAGE, VANDALIZED	REMOVE
20	PARKINSONIA ACULEATA (PALO VERDE)	8' C, 15' HT, 30' SP.	UNHEALTHY	DISTRESSED	REMOVE
21	PARKINSONIA ACULEATA (PALO VERDE)	8' C, 15' HT, 20' SP.	UNHEALTHY	DEAD	REMOVE
22	PARKINSONIA ACULEATA (PALO VERDE)	8' C, 20' HT, 30' SP.	HEALTHY		SALVAGE
23	PARKINSONIA ACULEATA (PALO VERDE)	8' C, 15' HT, 25' SP.	HEALTHY	SPRAWLING, WON'T SURVIVE TRANSPLANT	REMOVE
24	PARKINSONIA ACULEATA (PALO VERDE)	12' C, 20' HT, 25' SP.	UNHEALTHY	DISTRESSED	REMOVE
25	WASHINGTONIA FILIFERA (CAL. FAN PALM)	6' HT.	HEALTHY		SALVAGE
26	WASHINGTONIA FILIFERA (CAL. FAN PALM)	15' HT.	HEALTHY		SALVAGE
27	WASHINGTONIA FILIFERA (CAL. FAN PALM)	20' HT.	HEALTHY		SALVAGE
28	WASHINGTONIA FILIFERA (CAL. FAN PALM)	40' HT.	HEALTHY		SALVAGE
29	WASHINGTONIA FILIFERA (CAL. FAN PALM)	30' HT.	HEALTHY		SALVAGE
30	WASHINGTONIA FILIFERA (CAL. FAN PALM)	40' HT.	HEALTHY		SALVAGE
31	WASHINGTONIA FILIFERA (CAL. FAN PALM)	30' HT.	HEALTHY		SALVAGE

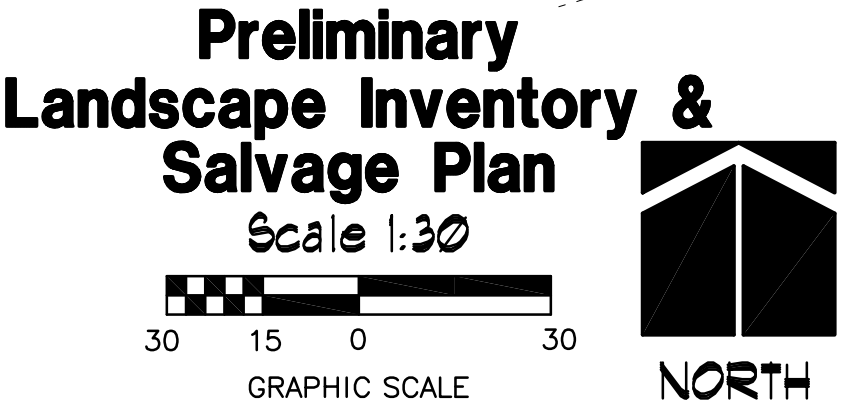
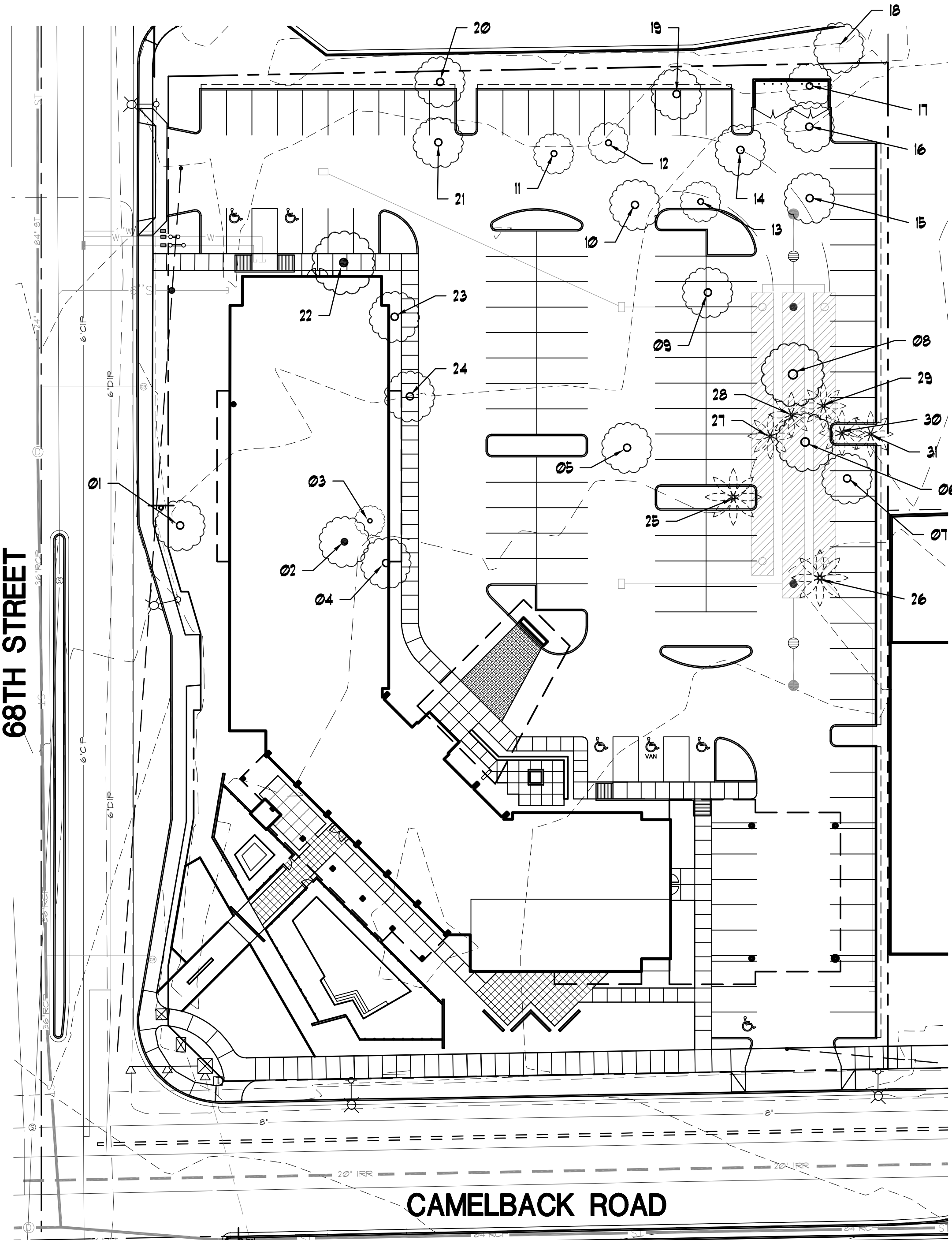


Vicinity Map



PLANT SCHEDULE:

	EXISTING TREE	TO REMAIN
	EXISTING TREE	TO BE SALVAGED
	EXISTING TREE	TO BE REMOVED
	EXISTING FAN PALM	TO BE SALVAGED



JOB NUMBER  
XXXX

DATE  
7-12-19

INVENTORY &  
SALVAGE PLAN

LSI-1

GERALD R. KESLER, INC.  
ARCHITECTS

14891  
PHILLIP R. RYAN  
03/12/19  
EXPIRES 03/31/21

1023 E. Desert Lane  
Phoenix, AZ 85042

PHONE: 602-725-1083  
FAX: 602-465-2160  
EMAIL: gk@gsk.net