

PROJECT INFORMATION

Table with project information including address (15279 N. SCOTTSDALE RD.), zoning (II-B), use group (MERCANTILE), and scope of work (TENANT IMPROVEMENT CONSISTING OF REMODEL OF EXISTING STORE).

Planning Review By: Desirae Mayo, Phone: (480) 312-4218, e-mail: DMayo@scottsdaleaz.gov, Review Cycle: 1, Date: 12/21/2021

comments on page 26

Zebra responses to each comment are shown in blue, as they relate to the Revision 1 drawing set, dated 01/13/22.

POTTERY BARN

SCOTTSDALE QUARTER 15279 N. SCOTTSDALE RD. #100 SCOTTSDALE, AZ 85254

ZBR: refer to revised sheet G002 for added fire dept. notes

FIRE DEPT. NOTES

- 1. SUBMIT SHOP DRAWINGS FOR ANY MODIFICATION OF EXISTING FIRE SPRINKLER SYSTEM AND COMPLY WITH NFPA 13 AND LOCAL AMENDMENTS. IN LIGHT HAZARD OCCUPANCIES, EXISTING STANDARD RESPONSE SPRINKLER HEADS WITHIN TENANT SPACE SHALL BE CHANGED OUT TO QUICK RESPONSE WHEN SCOPE OF WORK WILL ADD AND/OR RELOCATE 50% OR MORE OF SPRINKLER HEADS.

OCCUPANT LOAD

Table with columns: SPACE, SQ. FT., FACTOR, OCCUPANTS. Rows include SALES - FIRST, SALES - SECOND, STOCK - FIRST, STOCK - SECOND, MANAGER'S OFFICE, RR'S / MISC., and TOTAL.

EXITING CALCULATIONS

Tables for REQUIRED EXITS, MEANS OF EGRESS SIZING, and EXIT ACCESS TRAVEL DISTANCE.

Table for EXIT SEPARATION with columns: MAX. DIAGONAL DISTANCE, REQUIRED, PROVIDED.

PLUMBING REQUIREMENTS

Table with columns: FIXTURE, REQUIRED, PROVIDED. Rows include WATER CLOSET, LAVATORY, DRINKING FOUNTAIN, and MOP SINK.

DEFERRED SUBMITTALS

FIRE SPRINKLER MODIFICATIONS TO BE UNDER SEPARATE PERMIT. FIRE ALARM SPRINKLER TO BE UNDER SEPARATE PERMIT. INTERIOR & EXTERIOR SIGNAGE TO BE UNDER SEPARATE PERMIT.

APPLICABLE CODES

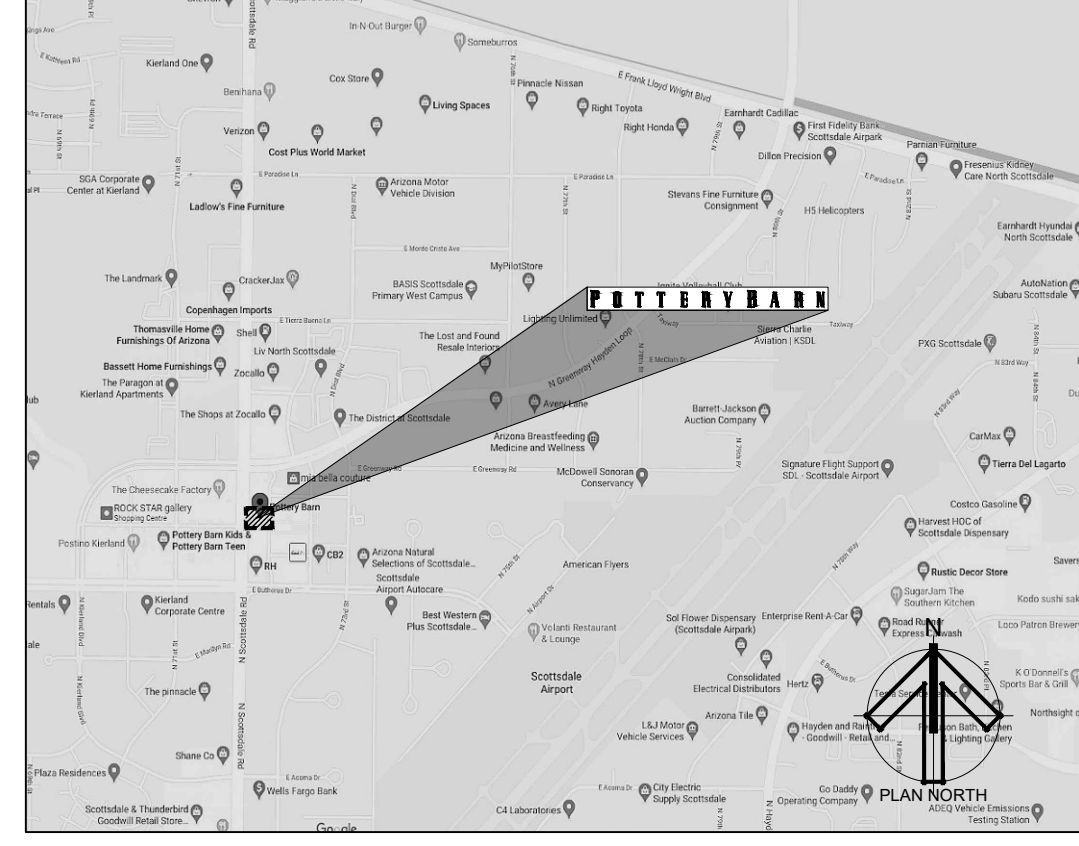
Table with columns: CODE AUTHORITIES, CITY OF SCOTTSDALE. Rows include BUILDING CODE, PLUMBING CODE, MECHANICAL CODE, ELECTRICAL CODE, ENERGY CODE, FIRE CODE, and ACCESSIBILITY CODE.



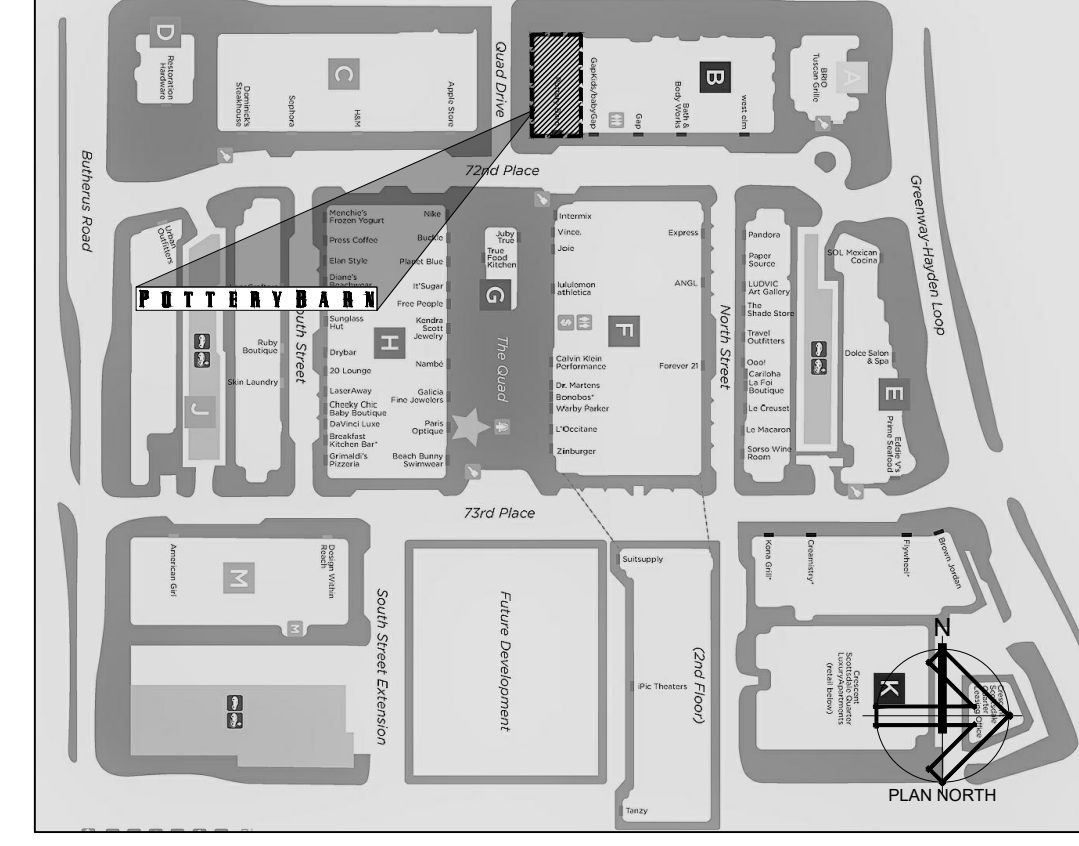
PROJECT TEAM DIRECTORY

CLIENT: WILLIAMS-SONOMA, INC. JIMMY CASTELLUCCI, 777 DAVIS ST, SAN FRANCISCO, CA 94111. MEP ENGINEER: EEA CONSULTING ENGINEERS BRYAN WILKERSON, 6615 VAUGHT RANCH RD. #100, AUSTIN, TX 78730. ARCHITECT: ZEBRA PROJECTS, INC. KELSEY AHUMADA, 14614 N. KIERLAND BLVD. STE N300, SCOTTSDALE, AZ 85254. CONSTRUCTION MANAGER: GPMG, INC. CONTACT: MOHAMED BAGOURY & OMAR ASHRY, PHONE: (289) 888-2354 & (289)400-0004.

VICINITY MAP



SITE MAP



SHEET INDEX

Table with columns: SHEET #, TITLE. Lists sheets from G000 (COVER SHEET) to P111 (PLUMBING PLAN).



ZEBRA PROJECTS, INC. 14614 N. KIERLAND BLVD., SUITE N300 SCOTTSDALE, ARIZONA 85254 PHONE: 480.912.1169 www.zbr.co.uk

STORE NO: 651

POTTERY BARN SCOTTSDALE QUARTER, 15279 N. SCOTTSDALE RD. #100 SCOTTSDALE, AZ 85254

REVISIONS

Table with columns: DATE, DESCRIPTION. Includes a revision entry for 11/18/2022.

STATUS: LL / PERMIT



FIELD VERIFICATION: The Contractor shall verify all figured dimensions and conditions at the project site and notify Zebra Projects, INC. of any dimensional errors, omissions or discrepancies before beginning or fabricating any work. Do not scale these drawings. COPYRIGHT © 2021: Zebra Projects, INC. shall retain all common law, statutory and all other reserved rights.

SHEET NAME: COVER SHEET

DATE: 11/11/21 PROJECT NO.: 33126 DRAWN: EK SCALE: AS NOTED

SHEET NO.: G000

MPE Review By: Jim Pappas - 480-312-7942 jpappas@scottsdaleaz.gov

CODE	MANUFACTURER / CONTACT	TYPE / COLOR	REMARKS
<b>STOREFRONT</b>			
SF-1: STOREFRONT SYSTEM PAINT	BENJAMIN MOORE AURA EXTERIOR	2133-10 ONYX AURA 631-4X, SATIN FINISH	SPRAY APPLIED TO EXISTING STOREFRONT SYSTEM, INTERIOR AND EXTERIOR; FILL ANY HOLES; BRUSH APPLY ON WOOD SHUTTERS
SF-2: STOREFRONT FACADE PAINT	BENJAMIN MOORE AURA EXTERIOR	876 ALABASTER 631-1X, SATIN FINISH	SPRAY APPLY TO BRICK, CORNICE, CAP, AND WOOD SPANDREL
GL-2: WINDOW FILM	3M	MILKY MILKY	APPLY TO INTERIOR OF GLASS
GL-3: (BID ALT) SOLAR FILM	3M	PRESTIGE 70	APPLY TO INTERIOR OF GLASS
AW-1 AWNING FABRIC	SUNBRELLA	SLATE	

- KEY NOTES**
- (E) HALO-LIT BUILDING MOUNTED SIGN TO BE REPLACED; (N) SIGN IN THE SAME LOCATION.
  - (E) STOREFRONT SYSTEM TO BE REPAINTED.
  - (E) WOOD SHUTTERS TO BE REFINISHED & REPAINTED.
  - (E) BRICK FINISH TO BE REPAINTED. PATCH AND REPAIR BRICK FINISH AFTER AWNING REMOVAL, PRIOR TO PAINTING.
  - (E) PIN-MOUNTED SIGN TO BE REPLACED; (N) SIGN IN THE SAME LOCATION.
  - (E) STONE BASE TO REMAIN; CLEAN AND REPAIR TO LIKE NEW CONDITION; REPLACE ANY MISSING GROUT.
  - (E) CORNICE AND CAP TO BE REPAINTED.
  - (E) RAILING TO BE PAINTED TO MATCH STOREFRONT.
  - (E) NON-ILLUMINATED BEAM MOUNTED SIGN TO BE REPLACED; (N) SIGN IN THE SAME LOCATION. (E) BEAM TO BE REPAINTED TO MATCH STOREFRONT.
  - (E) AWNING FRAME TO REMAIN; REPAINT SF-1. REPLACE AWNING FABRIC WITH AW-1.
  - ADD 3M FILM "MILKY MILKY" TO INTERIOR SIDE OF STOREFRONT.
  - (E) WOOD SPANDREL TO BE REPAINTED.
  - (E) "POTTERY BARN" VINYL SIGN TO BE REPLACED; (N) SIGN IN SAME LOCATION.
  - BID ALT: APPLY GL-3 SOLAR FILM TO ALL WINDOWS WHERE AWNINGS WERE REMOVED.

**zebra**  
 ZEBRA PROJECTS, INC.  
 14614 N KIERLAND BLVD., SUITE N300  
 SCOTTSDALE, ARIZONA 85254  
 PHONE: 480.912.1169 www.zbr.co.uk

Planning Review By:  
 Desirae Mayo  
 Phone: (480) 312-4218  
 e-mail: DMayo@scottsdaleaz.gov  
 Review Cycle: 1 Date: 12/21/2021

Staff approval required for exterior modifications. submit staff approval here:  
<https://eservices.scottsdaleaz.gov/bldgresources/preapp/introduction>

note: paint LRV must be less than 70%. proposed storefront facade paint color is 87% LRV and would not be supported by staff for a staff approval.

ZBR: refer to revised sheets A201, A202 and A203. Alabaster 876 has been revised to Fog Mist OC-31, with an LRV of 71.6. 71.6 was confirmed acceptable by Brad Carr on 01/11/22.

ZBR: refer to revised sheets A201, A202 and A203. This has been added to the keynotes.

add that signs to be done under separate permit

are awnings being removed or replaced? verify. awnings should remain to provide shade for pedestrians.

ZBR: refer to revised sheets A041, A042, A201, A202 and A203. Awnings on the East and West facades have been revised to remain. Awnings on the south facade are still being removed, due to the adequate tree coverage on that side of the street, as approved by Brad Carr on 01/11/22.

STORE NO.: 651

**POTTERY BARN**  
 SCOTTSDALE QUARTER, #100  
 15279 N. SCOTTSDALE RD. #100  
 SCOTTSDALE, AZ 85254

**REVISIONS**

DATE	DESCRIPTION

STATUS: LL / PERMIT

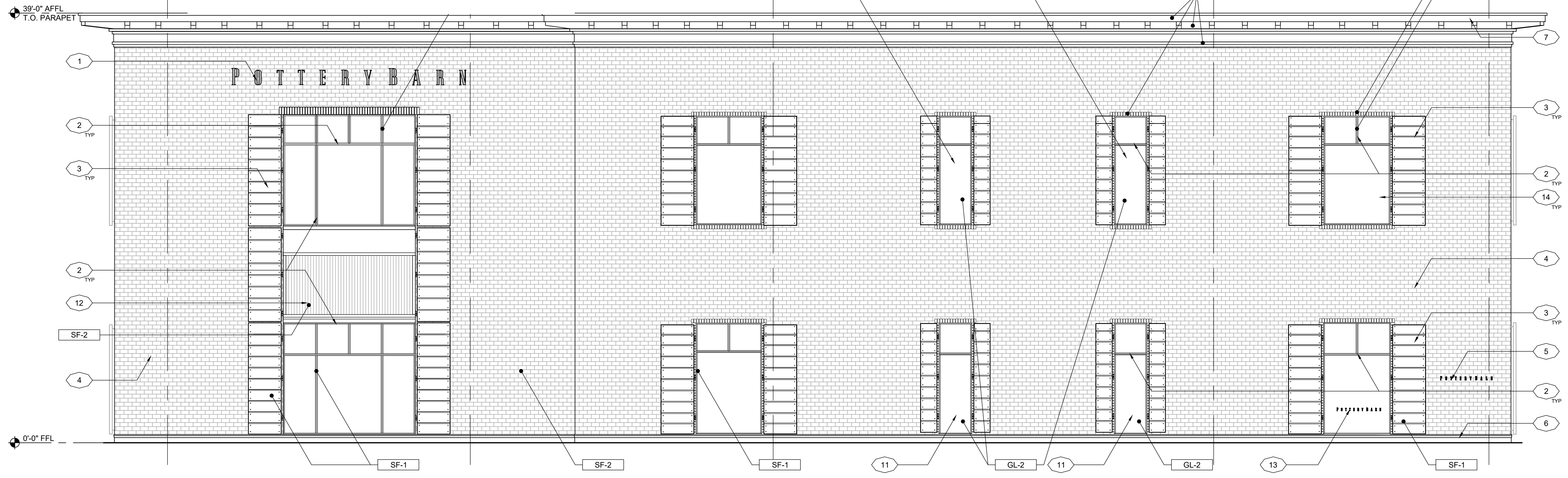


**FIELD VERIFICATION:**  
 The Contractor shall verify all figured dimensions and conditions at the project site and notify Zebra Projects, INC. of any dimensional errors, omissions or discrepancies before beginning or fabricating any work. Do not scale these drawings.  
**COPYRIGHT © 2021:**  
 Zebra Projects, INC. shall retain all common law, statutory and all other reserved rights. Neither the documents nor the information herein is to be reproduced, distributed, disclosed or otherwise used without the written consent of Zebra Projects, INC.

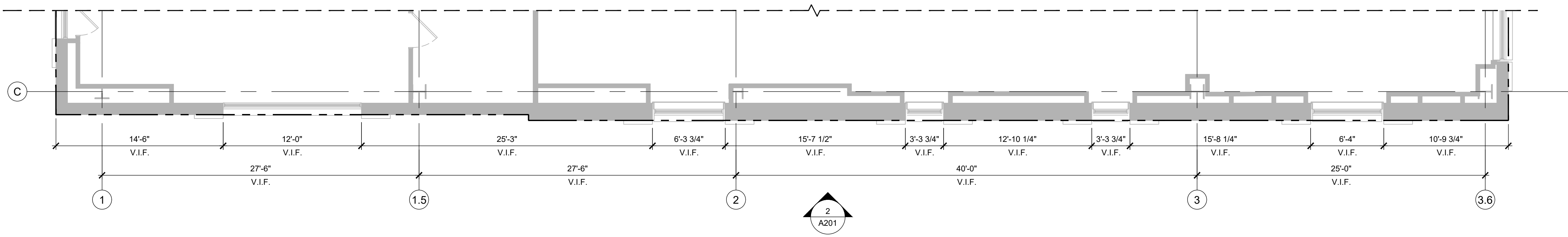
SHEET NAME: EXTERIOR ELEVATIONS

DATE: 11/11/21 PROJECT NO.: 33126  
 DRAWN: EK SCALE: AS NOTED

SHEET NO.: **A201**



**2 SOUTH ELEVATION**  
 SCALE: 3/16" = 1'-0"



**1 STOREFRONT PLAN - SOUTH**  
 SCALE: 3/16" = 1'-0"

PANELBOARD LP1 - S1 PANEL TYPE EXISTING		NEMA ENCLOSURE 1 MOUNTING SURFACE		AIC RATING		EXISTING		NOTES		
CCT NO.	LOAD DESCRIPTION	BKR SIZE	BKR OPT	ACTUAL KVA	PHASE	ACTUAL KVA	BKR OPT	BKR SIZE	LOAD DESCRIPTION	CCT NO.
1	LTG - STOCKROOM	20/1		0.750	A	1.257		20/1	LTG - SALES	2
3	LTG - STOCKROOM	20/1		0.625	B	1.334		20/1	LTG - SALES	4
5	LTG - STOCKROOM	20/1		0.200	C	0.625		20/1	LTG - STOCKROOM	6
7	LTG - BACKROOM	20/1		1.159	A	0.675		20/1	LTG - STOCKROOM	8
9	TRACK - SALES	20/1		0.510	B	0.475		20/1	LTG - STOCKROOM	10
11	TRACK - SALES	20/1		0.510	C	1.800	LC	20/1	LTG - LIGHTING FOR SALE	12
13	TRACK - SALES	20/1		0.680	A	1.800	LC	20/1	LTG - LIGHTING FOR SALE	14
15	TRACK - SALES	20/1		0.680	B	0.312		20/1	TRACK - SALES	16
17	TRACK - SALES	20/1		0.850	C	0.340		20/1	TRACK - SALES	18
19	TRACK - SALES	20/1		0.850	A	0.340		20/1	TRACK - SALES	20
21	TRACK - SALES	20/1		0.048	B	1.800		20/1	LTG - DISPLAY WINDOW	22
23	TRACK - SALES	20/1		0.360	C	0.920		20/1	LTG - DISPLAY WINDOW	24
25	TRACK - SALES	20/1		0.970	A	0.200		20/1	LTG - TIFFANY	26
27	TRACK - SALES	20/1		0.595	B	0.340		20/1	TRACK - SALES	28
29	TRACK - SALES	20/1		0.800	C	0.340		20/1	TRACK - SALES	30
31	TRACK - SALES	20/1		0.545	A	0.765		20/1	TRACK - SALES	32
33	TRACK - SALES	20/1		0.600	B	0.765		20/1	TRACK - SALES	34
35	TRACK - SALES	20/1		0.510	C	0.425		20/1	TRACK - SALES	36
37	TRACK - SALES	20/1		0.510	A	0.425		20/1	TRACK - SALES	38
39	TRACK - SALES	20/1		0.850	B	0.510		20/1	TRACK - SALES	40
41	TRACK - SALES	20/1		0.850	C	0.510		20/1	TRACK - SALES	42

REFER TO PANEL LP1 - SECTION 2 FOR LOAD CALCULATIONS

PANELBOARD LP1 - S2 PANEL TYPE EXISTING		NEMA ENCLOSURE 1 MOUNTING SURFACE		AIC RATING		EXISTING		NOTES		
CCT NO.	LOAD DESCRIPTION	BKR SIZE	BKR OPT	ACTUAL KVA	PHASE	ACTUAL KVA	BKR OPT	BKR SIZE	LOAD DESCRIPTION	CCT NO.
43	LTG - EXTERIOR	20/1		0.500	A	0.500		20/1	LTG - SALES	44
45	LTG - CASEWORK	20/1		1.593	B	0.500		20/1	LTG - SALES	46
47	LTG - CASEWORK	20/1		1.294	C	0.724		20/1	LTG - CASEWORK	48
49	LTG - SIGNAGE	20/1		1.200	A	1.800	LC	20/1	LTG - LIGHTING FOR SALE	50
51	REC - PLUGMOLD	20/1		1.000	B	1.800	LC	20/1	LTG - LIGHTING FOR SALE	52
53	TRACK - SALES	20/1	LC	0.384	C	1.150		20/1	LTG - SALES	54
55	TRACK - SALES	20/1	LC	0.480	A	0.000		20/1	SPARE	56
57	LTG - SIGNAGE	20/1		1.200	B	0.850		20/1	TRACK - SALES	58
59	LTG - LANTERNS	20/1		0.200	C	0.140		20/1	LTG - SALES	60
61	LTG - CHANDEILIER	20/1		1.500	A	1.500		20/1	LTG - SALES	62
63	LTG - CHANDEILIER	20/1		1.350	B	0.720		20/1	REC - SALES	64
65	LTG - CHANDEILIER	20/1		1.500	C	1.620		20/1	REC - FLOORBOXES	66
67	LTG - CHANDEILIER	20/1		1.500	A	1.080		20/1	REC - ENTRY	68
69	LTG - CHANDEILIER	20/1		1.500	B	1.080		20/1	REC - SALES	70
71	SPARE	20/1		0.000	C	0.064		20/1	LTG - CASEWORK	72
73	SPARE	20/1		0.000	A	1.440		20/1	REC - FLOORBOXES	74
75	LTG - EXTERIOR	20/1		0.500	B	1.080		20/1	REC - SALES	76
77	LTG - SIGNAGE	20/1		1.200	C	0.720		20/1	SPARE	78
79	REC - SALES	20/1		0.180	A	1.080		20/1	REC - LIGHTING GALLERY	80
81	LTG - CASEWORK	20/1		0.250	B	1.080		20/1	REC - LIGHTING GALLERY	82
83	REC - FLOORBOX	20/1		0.250	C	1.080		20/1	REC - LIGHTING GALLERY	84

<b>MAIN BREAKER</b>	VOLTAGE 208/120V MAINS 600A MCB	PHASE 3 WIRE 4	PANEL MAX AMPS 600A OPTIONS
LC = CONNECT TO FIRST AVAILABLE SPARE RELAY FOR LIGHTING CONTROL. NOTIFY ENGINEER IF THERE IS NO	ACTUAL CONNECTED KVA 23.696 23.947 19.366 66.999	PHASE A 47.589 PHASE B 52.137 PHASE C 47.835 TOTAL 147.561	N.E.C. DEMAND KVA 47.589 52.137 47.835 147.561
			N.E.C. DEMAND AMPS 410 AMPS

PANELBOARD LP2 PANEL TYPE EXISTING		NEMA ENCLOSURE 1 MOUNTING SURFACE		AIC RATING		EXISTING		NOTES		
CCT NO.	LOAD DESCRIPTION	BKR SIZE	BKR OPT	ACTUAL KVA	PHASE	ACTUAL KVA	BKR OPT	BKR SIZE	LOAD DESCRIPTION	CCT NO.
1	REC - SALES	20/1		0.720	A	0.360		20/1	REC - SALES	2
3	DAMPER	20/1		0.200	B	0.900		20/1	REC - FLOORBOXES	4
5	REC - FLOORBOXES	20/1		1.080	C	0.180		20/1	REC - SALES	6
7	REC - PLUGMOLD	20/1		0.540	A	1.260		20/1	REC - SALES	8
9	REC - PLUGMOLD	20/1		1.080	B	1.080		20/1	REC - FLOORBOXES	10
11	REC - FLOORBOXES	20/1		1.620	C	1.440		20/1	REC - DISPLAY CEILING	12
13	REC - SALES	20/1		0.900	A	1.080		20/1	REC - DISPLAY CEILING	14
15	LTG - CASEWORK	20/1		1.000	B	1.080		20/1	REC - DISPLAY CEILING	16
17	REC - FLOORBOXES	20/1		1.269	C	1.080		20/1	REC - EXTERIOR	18
19	MOTOR - SUMP PUMP	20/1		0.720	A	0.360		20/1	REC - DISPLAY ROOM	20
21				2.298	B	0.666		20/1	EF - 2	22
23	ODU - 1	35/2		2.298	C	1.200		20/1	HAND DRYER	24
25	REC - ELEVATOR PIT	20/1		0.180	A	0.360		20/1	REC - RESTROOM	26
27	ELEVATOR CONTROLS	20/1		0.200	B	0.800		20/1	REC - EMPLOYEE BREAK	28
29	LTG - ELEVATOR	20/1		0.200	C	1.500		20/1	MICROWAVE	30
31	REC - ELEVATOR	20/1		0.180	A	0.800		20/1	REFRIGERATOR	32
33	FIRE ALARM CONTROL PANEL	20/1		0.200	B	0.540		20/1	REC - FLOORBOXES	34
35	FIRE ALARM CONTROL PANEL	20/1		0.200	C	1.500		20/1	WATER HEATER	36
37	IDU	20/1		0.240	A	0.900		20/1	REC - STOCK	38
39	REC - ROOF	20/1		0.540	B	0.360		20/1	REC - STOCK	40
41	HAND DRYER	20/1		1.200	C	0.666		20/1	EF - 1	42

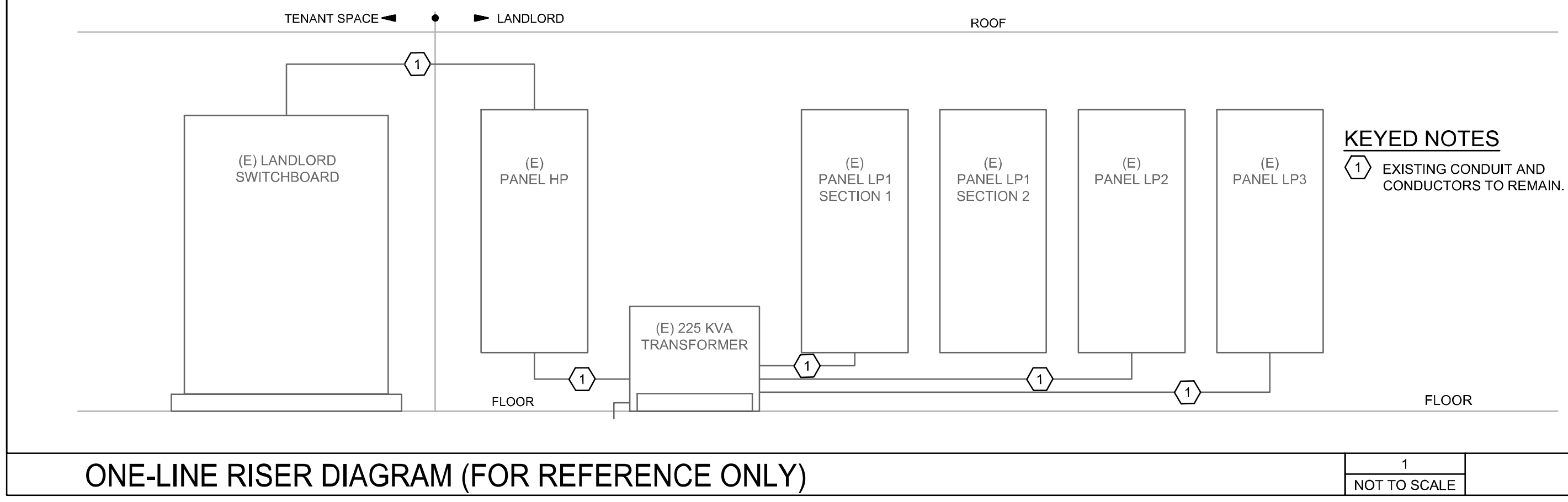
<b>MAIN BREAKER</b>	VOLTAGE 208/120V MAINS 100A MCB	PHASE 3 WIRE 4	PANEL MAX AMPS 100A OPTIONS
	ACTUAL CONNECTED KVA 8.600 10.944 15.433 34.977	PHASE A 6.900 PHASE B 9.608 PHASE C 13.825 TOTAL 30.333	N.E.C. DEMAND KVA 6.900 9.608 13.825 30.333
			N.E.C. DEMAND AMPS 84 AMPS

PANELBOARD HP PANEL TYPE EXISTING		NEMA ENCLOSURE 1 MOUNTING SURFACE		AIC RATING		EXISTING		NOTES		
CCT NO.	LOAD DESCRIPTION	BKR SIZE	BKR OPT	ACTUAL KVA	PHASE	ACTUAL KVA	BKR OPT	BKR SIZE	LOAD DESCRIPTION	CCT NO.
1	XFMR	350/3		41.242	A	14.404		100/3	ELEVATOR	2
3				41.242	B	14.404				4
5				41.242	C	14.404				6
7				7.174	A	7.174				8
9	HP - 1	35/3		7.174	B	7.174		35/3	HP - 2	10
11				7.174	C	7.174				12
13				7.174	A	7.174				14
15	HP - 3	25/3		5.263	B	7.174		35/3	HP - 4	16
17				5.263	C	7.174				18
19				7.174	A	4.864				20
21	HP - 5	35/3		7.174	B	4.864		25/3	HP - 6	22
23				7.174	C	4.864				24
25	SPACE				A				SPACE	26
27	SPACE				B				SPACE	28
29	SPACE				C				SPACE	30
31	SPACE				A				SPACE	32
33	SPACE				B				SPACE	34
35	SPACE				C				SPACE	36
37	SPACE				A				SPACE	38
39	SPACE				B				SPACE	40
41	SPACE				C				SPACE	42

<b>MAIN BREAKER</b>	VOLTAGE 480/277V MAINS 500A MCB	PHASE 3 WIRE 4	PANEL MAX AMPS 500A OPTIONS
	ACTUAL CONNECTED KVA 94.469 94.469 94.469 283.407	PHASE A 94.469 PHASE B 94.469 PHASE C 94.469 TOTAL 283.407	N.E.C. DEMAND KVA 94.469 94.469 94.469 283.407
			N.E.C. DEMAND AMPS 422 AMPS

PANELBOARD LP3 PANEL TYPE EXISTING		NEMA ENCLOSURE 1 MOUNTING SURFACE		AIC RATING		EXISTING		NOTES		
CCT NO.	LOAD DESCRIPTION	BKR SIZE	BKR OPT	ACTUAL KVA	PHASE	ACTUAL KVA	BKR OPT	BKR SIZE	LOAD DESCRIPTION	CCT NO.
1	REC - CASHWRAP	20/1	LO	0.360	A	0.180		20/1	REC - WIRELESS	2
3	REC - CASHWRAP	20/1	LO	0.360	B	0.000		20/1	SPARE	4
5	REC - CASHWRAP	20/1	LO	0.360	C	0.180		20/1	REC - OFFICE	6
7	REC - RESOURCE WALL IG	20/1	LO	0.360	A	0.180		20/1	REC - OFFICE	8
9	SPARE	20/1		0.000	B	0.180		20/1	REC - OFFICE	10
11	SPARE	20/1		0.000	C	0.360		20/1	REC - SOUND SYSTEM	12
13	REC - CASHWRAP	20/1	LO	0.360	A	0.360		20/1	REC - SOUND SYSTEM	14
15	REC - CASHWRAP	20/1		0.720	B	0.360		20/1	REC - SHIP / REC	16
17	TRACK - SALES	20/1		1.650	C	0.720		20/1	REC - SHIP / REC	18
19	TRACK - SALES	20/1		0.800	A	0.720		20/1	REC - SHIP / REC	20
21	REC - CASHWRAP	20/1		0.720	B	0.180		20/1	REC - SHIP / REC	22
23	REC - CASHWRAP	20/1		0.180	C	0.360		20/1	REC - CUSTOMER SERVICE	24
25	REC - CPU	20/1		0.360	A	0.180		20/1	REC - CUSTOMER SERVICE	26
27	REC - PRINTER	20/1		0.360	B	0.720		20/1	REC - CONSULT TABLE	28
29	REC - PHONEBOARD IG	20/1		0.360	C	1.440	LO	20/1	REC - CONSULT TABLE IG	30
31	REC - PHONEBOARD IG	20/1		0.360	A	1.000		20/1	LIGHTING CONTROL PANEL	32
33	REC - WRAP ROOM	20/1		0.180	B	0.000		20/1	SPARE	34
35	REC - WRAP ROOM	20/1		0.360	C	2.080		20/2	INSTA-HOT WH-1	36
37	REC - PLUGMOLD	20/1		0.180	A	2.080		20/2	INSTA-HOT WH-2	38
39	REC - BOPIS DESK	20/1		0.720	B	2.080		20/2	INSTA-HOT WH-2	40
41	REC - BOPIS DESK	20/1		0.720	C	2.080		20/2	INSTA-HOT WH-2	42

<b>MAIN BREAKER</b>	VOLTAGE 208/120V MAINS 100A MCB	PHASE 3 WIRE 4	PANEL MAX AMPS 100A OPTIONS
	ACTUAL CONNECTED KVA 7.480 6.580 10.850 24.910	PHASE A 7.750 PHASE B 6.042 PHASE C 11.598 TOTAL 25.390	N.E.C. DEMAND KVA 7.750 6.042 11.598 25.390
			N.E.C. DEMAND AMPS 70 AMPS



**KEYED NOTES**  
1 EXISTING CONDUIT AND CONDUCTORS TO REMAIN.

1  
NOT TO SCALE

BREAKER OPTIONS	
LO	HANDLE LOCK-ON DEVICE
LF	HANDLE LOCK-OFF DEVICE
PA	HANDLE PADLOCK DEVICE
ST	SHUNT TRIP BREAKER
AS	POWER LINK AS BREAKER
GFCI	GROUND FAULT CIRCUIT INTERRUPTER BREAKER
HACR	HEATING, A/C, & REFRIGERATION RATED BREAKER
AUX	AUXILIARY CONTACTS

NOTE: IT IS THE ELECTRICAL CONTRACTORS RESPONSIBILITY TO PROPERLY BALANCE ALL BRANCH CIRCUITS BETWEEN THE PHASES OF THE SYSTEM, REGARDLESS OF CIRCUITING INDICATED.

AS NOTED

Per NEC 408.4 (A): "Every circuit and circuit modification shall be legibly identified as to its CLEAR, EVIDENT, AND SPECIFIC PURPOSE OR USE."

ELECTRICAL LOAD SUMMARY						
DESCRIPTION	ACTUAL CONNECTED KVA	DEMAND FACTOR	ACTUAL DEMAND KVA	N.E.C. CONNECTED KVA	N.E.C. DEMAND FACTOR	N.E.C. DEMAND KVA
TRACK LIGHTING	20	1.25	24.9	630 ****	1.25	94.5