

02 . WEST ELEVATION

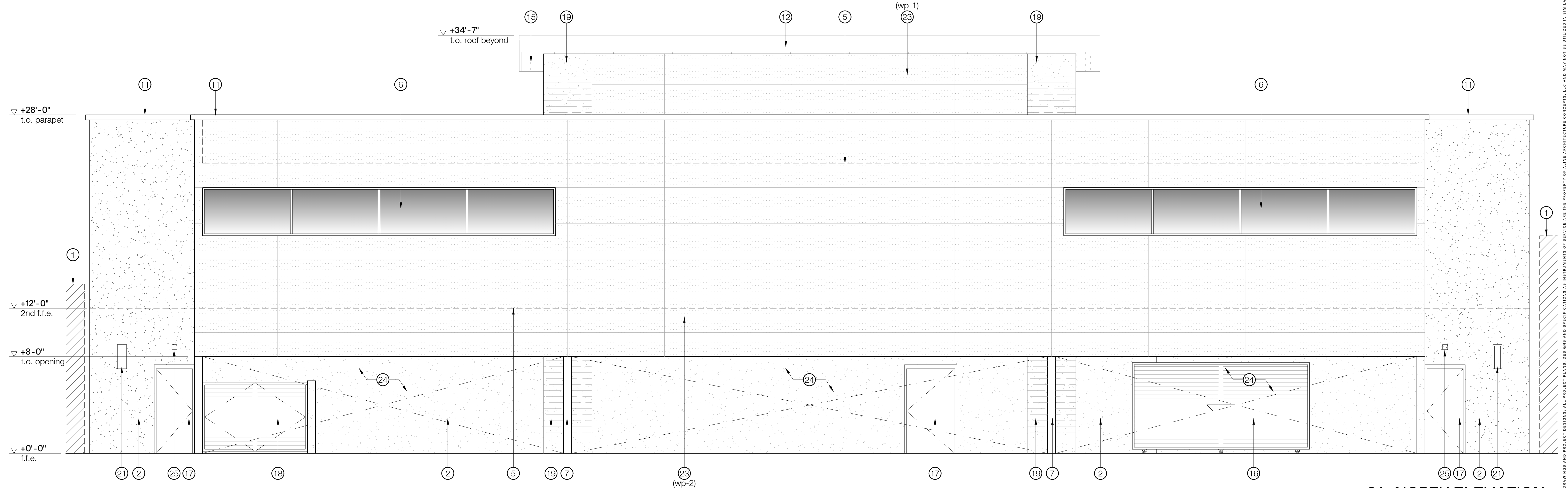
1/4" = 1'-0"

KEYNOTES

1. existing adjacent building
2. stucco wall (stc-1)
3. metal screen mesh over windows (mtl-1) (glz-1)
4. metal screen mesh over stucco wall (mtl-1) (stc-1)
5. line of roof / floor structure behind
6. storefront window (alum-1) (glz-1)
7. painted steel column (stl-1)
8. wood entry doors
9. painted steel canopy (stl-1)
10. fire department connection +36" above fin. grade
11. painted steel parapet cap (stl-1)
12. metal roof fascia (pt-1)
13. rooftop mechanical unit behind screen wall
14. signage by others
15. tongue and groove wood ceiling (wd-1)
16. sliding decorative metal gate (stl-1)
17. hollow metal door (pt-1)
18. decorative metal gate (pt-1)
19. board formed concrete wall / column (conc-1)
20. concealed parapet downlight
21. exterior wall sconce - mounted at 9'-0" a.f.f. (black finish)
22. open trellis beyond
23. exterior wall panel
24. covered parking - open to beyond
25. exterior egress light mounted at 9'-0" af.f. (black finish)

EXTERIOR FINISHES

- alum-1 aluminum storefront frame - arcadia 'black' ab-8
- conc-1 board formed concrete - natural finish (2x6 utility boards with 1/2" gap)
- glz-1 insulated glazing unit - solarcool 'solargray'
- mtl-1 metal screen mesh - finished to match pt-1
- pt-1 paint - dunn edwards 'dark engine' de6350
- stc-1 integral color stucco - parex 'lariat' - white
- stl-1 painted steel (pt-1)
- wd-1 1x4 tongue and groove wood planks - natural finish w/matte clear sealer
- wp-1 exterior wall panel by trespa - 'turf green'
- wp-2 exterior wall panel by trespa - 'steel grey'



01 . NORTH ELEVATION

1/4" = 1'-0"

PRELIMINARY NOT FOR CONSTRUCTION
 1st DRB SUBMITTAL
 pre-app no.: 1006-PA-2018
 VALLEY LIGHT GALLERY
 7120 e. Incester lane
 scottsdale, arizona 85254
 date issued: august 21, 2019
 project # 18044
 1340 EAST MAIN STREET #210
 SCOTTSDALE, ARIZONA 85251
 MADE WITH A LINE . COM
 ALINE ARCHITECTURE CONCEPTS
 © COPYRIGHT 2018 ALINE ARCHITECTURE CONCEPTS, LLC

EXTERIOR ELEVATIONS

a-3.1
44-DR-2019
8/26/2019