

DRAWING INDEX		DRB SUBMITTAL DATE: 09/20/2019	***	***	***	***
SHEET NUMBER	SHEET TITLE					
E000	ELECTRICAL COVER SHEET	●				
E100	FIRST FLOOR LIGHTING PLAN	●				
E601	LIGHTING FIXTURE CUT SHEETS	●				
	TOTAL	3				

ELECTRICAL SYMBOL LIST	
NOTE: THIS IS A MASTER SCHEDULE. NOT ALL SYMBOLS AND/OR ABBREVIATIONS CONTAINED HEREIN MAY APPEAR ON THE DRAWINGS.	
	FLUORESCENT FIXTURE - RECESSED, LAY-IN
	FLUORESCENT FIXTURE - RECESSED, FLANGED
	FLUORESCENT FIXTURE - SURFACE
	FLUORESCENT FIXTURE - SUSPENDED
	FLUORESCENT FIXTURE - OPEN STRIP WITH WIRE GUARD
	FLUORESCENT FIXTURE - WALL MOUNTED
	INCANDESCENT, H.I.D. OR MINI-FLUORESCENT - SURFACE OR RECESSED, PER FIXTURE SCHEDULE
	INCANDESCENT, H.I.D. OR MINI-FLUORESCENT - WALL BRACKET
	INCANDESCENT, H.I.D. OR MINI-FLUORESCENT - WALL WASH
	LOW VOLTAGE INCANDESCENT FIXTURE
	CHANDELLIER (PROVIDE 5X STRUCTURAL BACKING)
	FAN (PROVIDE 5X STRUCTURAL BACKING)
	SPOTLIGHT - J-BOX OR TRACK MOUNTED - TRACK LENGTH AS INDICATED
	STEP LIGHT - SURFACE OR RECESSED, PER FIXTURE SCHEDULE
	BOLLARD
	POLE OR POST - ARM OR TOP MOUNTED CUT-OFF LUMINAIRE
	TWIN-LAMP BATTERY PACK - UNSWITCHED, WALL MOUNTED (LOCATE 12" BELOW CEILING U.O.N.)
	TWIN-LAMP BATTERY PACK - UNSWITCHED, CEILING MOUNTED, FLUSH OR SURFACE PER FIXTURE SCHEDULE
	EXIT LIGHT - FACES AND ARROWS AS INDICATED, UNIVERSAL MOUNTING, UNSWITCHED
	EXIT LIGHT - COMBINATION SINGLE FACE. ARROWS AS INDICATED WITH TWIN LAMP BATTERY PACK, UNIVERSAL MOUNTING, UNSWITCHED.
	EXIT LIGHT - LOW LEVEL: 6" - 8" A.F.F. TO BOTTOM, 4" MAX. OFF DOOR FRAME
	LOW VOLTAGE
	LED
	NEON
	FIXTURE, EQUIPMENT ON EMERGENCY
	SWITCHES AT +48" TO TOP UON (PER ADA)
	SWITCH - SINGLE POLE
	SWITCH - DOUBLE POLE
	SWITCH - THREE WAY
	SWITCH - FOUR WAY
	SWITCH - OCCUPANCY TYPE
	SWITCH - OCCUPANCY TYPE, CEILING MOUNTED
	SWITCH - EMERGENCY
	SWITCH - PILOT TOGGLE (CONFIRM LIGHTED POSITION)
	SWITCH - KEYED OPERATED
	SWITCH - SLIDER TYPE ELECTRONIC DIMMER (WATTAGE RATING AS REQUIRED)
	SWITCH - MOMENTARY CONTACT: SPDT CENTER OFF UON
	MANUAL MOTOR STARTER - POLES AND HEATERS AS REQUIRED
	PHOTOELECTRIC SWITCH - 1500 VA UON
	SIGNAGE OUTLET CONNECTION
	DEVICES AT +18" TO CENTER LINE UON (PER ADA)
	DEVICES MOUNTED IN MULTIPLE UNDER COMMON COVER MAXIMUM HEIGHT ON WALLS = +48" TO TOP UON (PER ADA)
	DEVICES MOUNTED IN OR ABOVE BACKSPLASH: MAXIMUM HEIGHT ON WALLS = +48" TO TOP UON (PER ADA)
	DEVICES IN MULTI-COMPARTMENT FLUSH FLOOR MOUNTED UON
	RECEPTACLE - DUPLEX
	RECEPTACLE - DUPLEX - HALF SWITCHED (TOP HALF)
	RECEPTACLE - DUPLEX - INTEGRAL GFCI CIRCUITRY
	RECEPTACLE - DUPLEX - ISOLATED GROUND (ORANGE FACE): NEMA 520R/TG
	RECEPTACLE - DOUBLE DUPLEX
	RECEPTACLE - DOUBLE DUPLEX - INTEGRAL GFCI CIRCUITRY
	RECEPTACLE - SPECIAL TYPE (SEE ADDITIONAL NOTES)
	RECEPTACLE(S) - CEILING MOUNTED
	PLUG MOLD SURFACE RACEWAY SYSTEM (2-CIRCUIT WITH OUTLETS 18" O.C. U.O.N.) MOUNTED ABOVE BACKSPLASH U.O.N.
	TELEPOWER POLE
	SMOKE DETECTOR - LOCAL ONLY, 120V, W/INTEGRAL BATTERY AND ALARM HORN. WALL MOUNT AT 12" BELOW CEILING
	SMOKE DETECTOR - LOCAL ONLY, 120V, W/INTEGRAL BATTERY, STROBE, AND ALARM HORN. WALL MOUNT AT 12" BELOW CEILING
	OUTLET - CLOCK
	OUTLET - TELEPHONE
	OUTLET - VOICE / DATA
	OUTLET - DATA
	OUTLET - TELEVISION
	OUTLET - DOOR BELL/BUZZER
	OUTLET - MICROPHONE
	OUTLET - VOLUME CONTROL (+48" TO TOP UON)
	OUTLET - SPEAKER 8" COAXIAL W/ BACK BOX AND GRILLE
	OUTLET - THERMOSTAT (REF. MECHANICAL DRAWINGS)
	TV / SECURITY CAMERA - FIXED (MOUNTING PER PLANS)
	TV / SECURITY CAMERA - PTZ - PAN, TILT, ZOOM (MOUNTING PER PLANS)
	SWITCHGEAR
	PANELBOARD - SURFACE MOUNTED
	PANELBOARD - FLUSH MOUNTED
	EXISTING / RELOCATED PANELBOARD - SURFACE MOUNTED
	EXISTING / RELOCATED PANELBOARD - FLUSH MOUNTED
	TRANSFORMER
	ENCLOSED CIRCUIT BREAKER
	FIRE ALARM EQUIPMENT
	COMBINATION FIRE/SMOKE DAMPER
	SMOKE DAMPER
	SHUNT TRIP STATION
	CONTROL STATION AT +48" TO TOP UON (PER ADA)
	RELAY
	CONTACTOR WITH INTEGRAL HOA SELECTOR
	MAGNETIC STARTER, SIZE I UON
	DISCONNECT SWITCH: 30/3 UON (F=FUSIBLE (FPEN), N=NONFUSED)
	COMBINATION STARTER & DISCONNECT: SIZE I UON
	VARIABLE FREQUENCY DRIVE
	SINGLE-PHASE MOTOR CONTROL ASSEMBLY: HP-RATED SWITCH AND POWER RELAY-20/1 (U.O.N.)
	PULLBOX - SIZE AND LOCATION AS REQUIRED
	JUNCTION BOX - SIZE PER NEC REQUIREMENTS
	MECHANICAL EQUIPMENT DESIGNATION
	MOTOR OUTLET
	LIGHTING FIXTURE DESIGNATION: TYPE F1, 120 WATTS QUANTITY = 3
	LOAD C: . KVA (.A) C = CONNECTED LOAD LOAD D: . KVA (.A) D = DEMAND LOAD LOAD S: . KVA (.A) S = STANDBY LOAD
	EQUIPMENT LOAD SUMMARY (EXPRESSED IN KVA AND AMPS)
	SHEET NOTE DESIGNATION
	FEEDER DESIGNATION (SEE FEEDER SCHEDULE)
	CIRCUITING IN WALL OR ABOVE CEILING
	CIRCUITING IN FLOOR OR BELOW GRADE
	TICS = NO. OF #12 WIRES IF MORE THAN TWO: A-1,3,5 = ISOLATED GROUND WIRE
	HOMERUN: (4) #12, 3/4"C. TO PANEL A - CIR. 1,3,5
	STUB-OUT
	CIRCUIT DOWN
	COPPER GROUND (SIZE PER PLANS)
	MOISTURE SEAL-OFF
	30 AMP / 3 POLE (REPRESENTATIVE)
	ALUMINUM
	ABOVE FINISHED FLOOR
	ABOVE FINISHED GRADE
	AMP INTERRUPTING CURRENT
	AUTOMATIC TRANSFER SWITCH
	BACKBOARD
	CONDUIT (WITH PULL CORD IF OTHERWISE EMPTY)
	COPPER
	EXISTING TO REMAIN
	FUSE (DUAL-ELEMENT, TIME DELAY)
	FURNISHED BY OTHERS
	FUSE PER EQUIPMENT NAMEPLATE
	GROUND FAULT CIRCUIT INTERRUPTER
	GROUND
	HAND-OFF-AUTOMATIC
	HORSEPOWER
	ISOLATED GROUND
	KCMIL (300 KCMIL = 300K)
	NON-FUSED
	NOT IN CONTRACT
	NIGHT LIGHT
	NOT TO SCALE
	EXISTING TO BE RELOCATED
	RIGID GALVANIZED STEEL
	TRANSIENT VOLTAGE SURGE SUPPRESSION
	UNSWITCHED
	UNINTERRUPTIBLE POWER SUPPLY
	UNLESS OTHERWISE NOTED
	WEATHER PROOF (NEMA 3R)
	EXISTING TO BE REMOVED
	TRANSFORMER

VALLEY LIGHT GALLERY 7120 e. mercer lane scottsdale, arizona 85254

1st DRB SUBMITTAL pre-app no.: 1006-PA-2018

revisions

preliminary not for construction

JUSTIN C. DAGERMAN 08-20-19

340 EAST MAIN STREET #210 SCOTTSDALE, ARIZONA 85251 MADE WITH ALINE.COM

ALINE ARCHITECTURE CONCEPTS

ELECTRICAL COVER SHEET

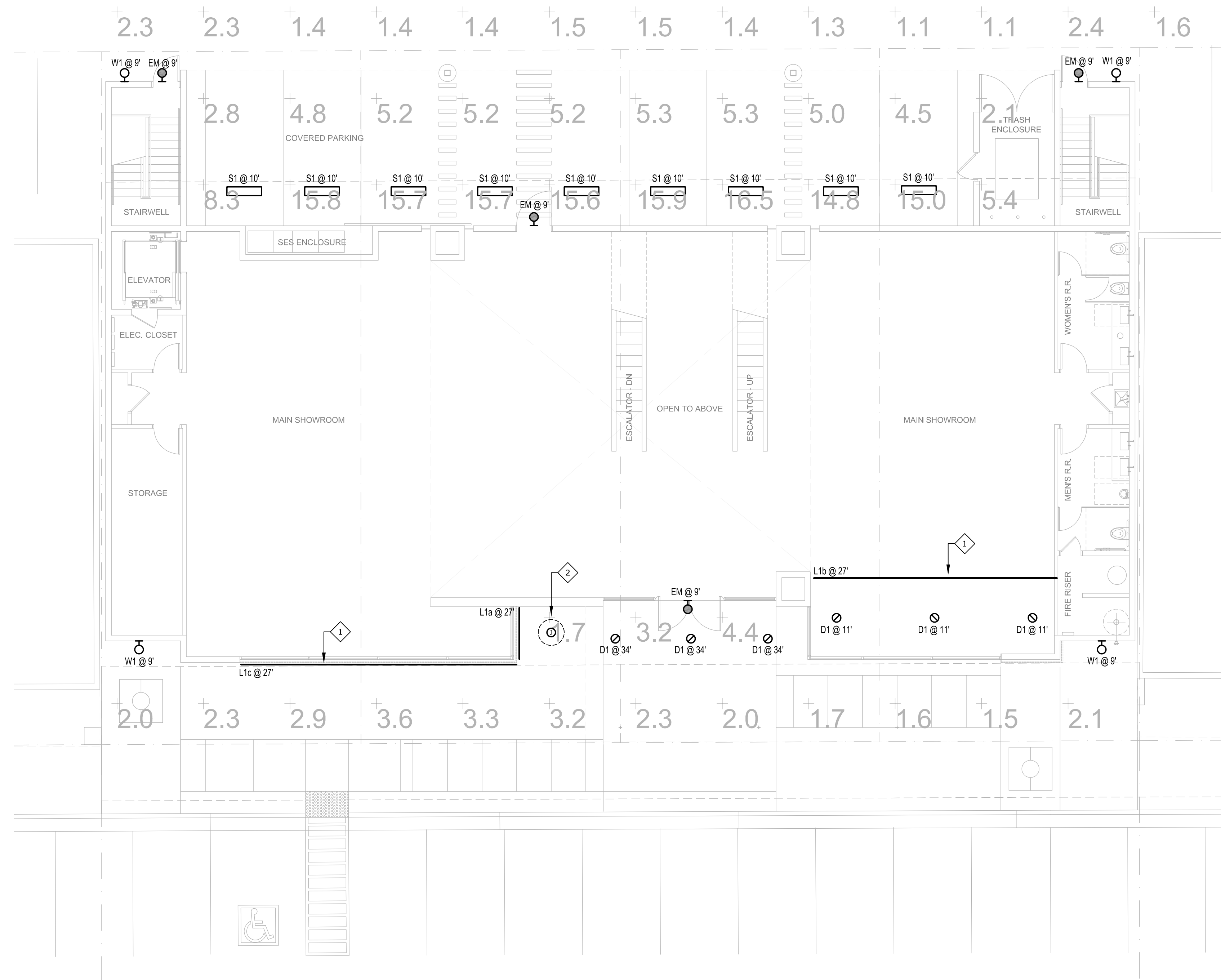
E000

MSA # msa ENGINEERING CONSULTANTS 7878 N 16th Street, Suite 140 Phoenix, AZ 85020 602-943-8424 msa-ec.com

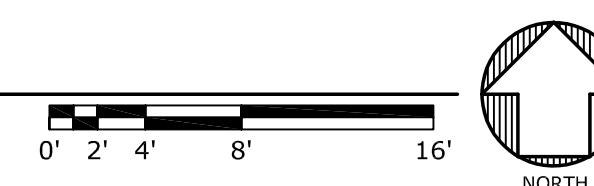
PLOTTED BY: HUGO CHAIRESZ ON Tuesday, August 20, 2019 AT 4:48 PM FROM F:\PROJECTS\191\1910094\CAD\ELECTRICAL\1910094-E100.dwg

Symbol	Label	QTY	Manufacturer	Catalog Number	Description	Lamp	Lumens per Lamp	LLF	Wattage
	D1	6	DMF Lighting	DRDH N IC 6 70 / DRD2M 7 9 40 / DRD2T R 6 S (FINISH)	6" DOWNLIGHT	LED	842	0.91	11.7
	EM	3	Lithonia Lighting	LIL LED 40K MVOLT (CONTROLS) (FINISH)	LIL Wallpack (Standard)	LED	833	0.91	8.36
	L1a	1	Juno Lighting	IO414 ASY (LENGTH) 40K 80CRI (DRIVER) (MAX WATTAGE) FPCZT (OPTIONS) (CHANNEL)	SHALLOW CHANNEL NO LENS	LED	425	0.91	28.38
	L1b	1	Juno Lighting	IO414 ASY (LENGTH) 40K 80CRI (DRIVER) (MAX WATTAGE) FPCZT (OPTIONS) (CHANNEL)	SHALLOW CHANNEL NO LENS	LED	425	0.91	132.44
	L1c	1	Juno Lighting	IO414 ASY (LENGTH) 40K 80CRI (DRIVER) (MAX WATTAGE) FPCZT (OPTIONS) (CHANNEL)	SHALLOW CHANNEL NO LENS	LED	425	0.91	151.36
	S1	9	Lithonia Lighting	MSLR L48 3500LM 840	LED STRIP LIGHT	LED	3853	0.91	26.48
	W1	4	Hinkley Lighting	2145TK	Large Wall Mount Lantern	LED	800	0.91	11.00

Description	Symbol	Avg	Max	Min	Max/Min	Avg/Min
FC @ GRADE	+	5.1 fc	16.5 fc	1.1 fc	15.0:1	4.6:1



A FIRST FLOOR LIGHTING PLAN
E100 1/8" = 1'-0"

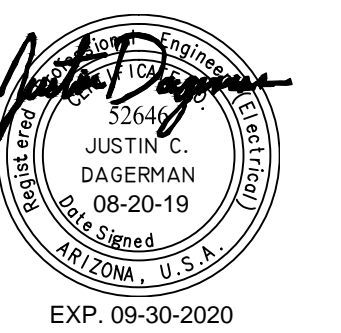


- SHEET NOTES:**
- 1 TAPE LIGHT LOCATED UNDER ROOF OVERHANG.
 - 2 OWNER FURNISHED PENDANT FIXTURE LOCATED UNDER ROOF OVERHANG.

PRELIMINARY NOT FOR CONSTRUCTION
 VALLEY LIGHT GALLERY
 7120 e. mercer lane
 scottsdale, arizona 85254
 date issued: august 21, 2019
 project # 18044

1st DRB SUBMITTAL
 pre-app no.: 1006-PA-2018

revisions



EXP. 09-30-2020
 7340 EAST MAIN STREET #210
 SCOTTSDALE, ARIZONA 85251
 MADEWITHALINE.COM

ALINE
 ARCHITECTURE
 CONCEPTS

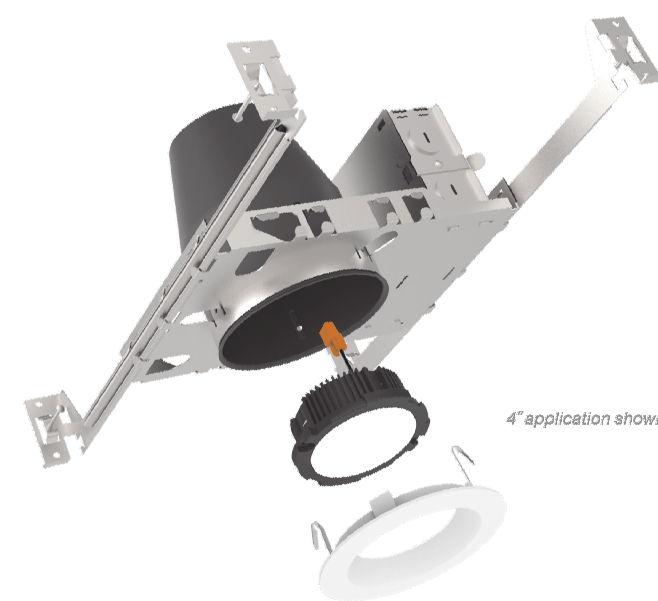
MSA #
msa
 ENGINEERING CONSULTANTS
 7878 N 16th Street, Suite 140
 Phoenix, AZ 85020
 602-943-8424
 msa-ec.com

FIRST FLOOR
 LIGHTING
 PLAN

E100

FIXTURE TYPE: D1

DRD2
Recessed LED Downlight
Classic New Construction
4", 5", 6" Aperture



4" application shown

Project:	Type:
Product Code:	Date:
Spec Sheet: V-02.28.19	

- DRD2 is a compact LED downlight that brings exceptional light to any area at a price point unmatched in the industry
- Combines the performance of a premium light engine with an intelligent design that makes it simple to install, maintain or replace
- All DRD2 housings are UL Listed approved for use with DMF's advanced LED modules and can be installed in direct contact with insulation

Application New Construction	Aperture 4", 5", 6"
Delivered Lumens 750 lm (10.8W), 1000 lm (12.8W)	Color Quality 93+ CRI, 2-step SDCM
Color Temperature 2700K 3000K 3500K 4000K	Light Distribution General Wall Wash
Input Voltage 120/277V	Dimming TRIAC/ELV 5%, 0-10V 1%, Lutron Hi-Lume® 1%
Trim Round, Baffle, Wall Wash, Square, Square on Round, Deep Standard, Deep Baffle	Emergency Lighting Emergency LED Driver for lighting up to 90 minutes in event of power failure
Housing Ratings ASTM E888 Certified Air Tight IC (Insulation Contact) Rated	Module Ratings UL Listed for Wet Location
Standards UL LISTED	Guarantee 50,000 hrs 5 years

dmflighting.com

FIXTURE TYPE: EM

LIL LED
LED Wall Luminaire



Color Finish	_____
Trim	_____
Wire	_____

Introduction
LIL LED is a compact and energy efficient wall luminaire ideal for replacing small incandescent and CFL luminaires. Photocell and battery pack options make LIL LED great for installations above doors, balconies, garage or warehouse entrances, and security applications. Whether directly mounting to a recessed junction box, or using the back box accessory for conduit entry/through wiring, LIL LED has you covered!

Specifications

	Standard	With Battery Pack (EL)
Width:	5"	5-7/8"
Height:	5-1/8"	6-1/8"
Depth:	2-3/4"	4-1/4"
Weight:	1.5 lbs	3 lbs

Ordering Information EXAMPLE: LIL LED 40K MVOLT WH

Series	Color Temperature	Voltage	Controls	Mounting	Finish
LIL LED	3K 3000K 4K 4000K	MVOLT 120/277V	Photocell PE None EL MVOLT button photocell EL Battery pack 1	Mount MB None EB Back box accessory for conduit wiring	DMTFO WH White DK Brown

Accessories

LIL LED DM TFO Back box for conduit entry applications, dark bronze - (1 Code *49870)

LIL LED BB WH Back box for conduit entry applications, white - (1 Code *49871)

NOTES

- MVOLT driver covers on 120V and 277V (SDM026).
- PE and EL cannot be ordered together.
- Options accessory for conduit entry wiring. Can be ordered with the luminaire or separately. (Specify separately. All wires are not available with emergency battery pack (EL) version.

FEATURES & SPECIFICATIONS

INTENDED USE
The versatility of LIL LED combines a sleek, compact profile with photocell and emergency battery pack options to provide a great solution for wall mount applications. LIL LED is ideal for replacing up to 100W incandescent or 50W CFL luminaires in installations above doors, balconies, garage or warehouse entrances, and security applications. It can also be used for decorative and general lighting in outdoor environments.

CONSTRUCTION
Aluminum housing with white or recessed dark bronze paint for lasting durability. The polycarbonate lens creates uniform light distribution, and is a UV resistant - great for outdoor environments.

OPTICS
Light engine are available in 3000K and 4000K CCTs. See Lighting Facts panel and photometry reports for specific beam performance.

ELECTRICAL
LED technology provides long operating life, 50,000 hours at 25°C. Electronic drivers have a power factor >95 and THD <25% and a minimum 2.5V surge rating.

WARRANTY
5-year limited warranty. Complete warranty terms located at www.lithonia.com/ContractorSelect/Products/Items_and_Options.aspx

Notes: Actual performance may differ as a result of use environment and application. All values are design or typical values, measured under laboratory conditions at 25°C. Specifications subject to change without notice.

One Lithonia Way • Conyers, Georgia 30012 • Phone: 800.279.8041 • www.lithonia.com LIL LED
© 2017-2019 Acuity Brands Lighting, Inc. All rights reserved. Rev. 05/13/19

FIXTURE TYPE: L1a, L1b & L1c


Juno

Type _____ Cat. No. _____

Project: _____

Notes: _____

FlexConnect
Architectural Linear Lighting System
Integrated Micro Optics
10414 Series
Indoor/Outdoor
Wet Location (IP67)



PRODUCT DESCRIPTION
Juno FlexConnect featuring Patent Pending microOptix technology is a dimmable flexible architectural luminaire system featuring micro-optic silicone optics for grazing, washing, cove, and other architectural or accent applications. Delivering up to 425 lumens per foot, Juno FlexConnect utilizes onboard current regulation for consistent light output from the start to end of the run. Juno FlexConnect luminaires feature silicone encapsulation for durability, reliability, and ease of installation. Luminaires can be cut and reconnected in six inch increments, making FlexConnect easy to configure in the field.

PRODUCT SPECIFICATIONS

Performance Drivers up to 425 lumens per foot while consuming just 4.8 watts per foot.

Construction Flexible, silicone encapsulated LED light engine is equipped with micro-optic silicone optics in three classifications: 1:1 deg, 20deg x 43 deg, and Asymmetric • Fourteen (14) LEDs per foot • Onboard current regulation maintains consistent light output from start to end of run • Rated for indoor or outdoor use when used with appropriate accessories.

Field-Connectable Features integrated connectors every six (6) inches, allowing luminaires to be field cut and reconnected in six (6) inch increments.

NOTE: MUST USE OCCULTER TO CUT LUMINAIRE - see instructions.

Color Quality Features industry leading color consistency within 3 SDCM • Available in 2700K, 3000K, 3500K, and 4000K at 90 CRI min • 2700K and 3000K are also available in 90 CRI min • Silicone is UV resistant for excellent color consistency over life.

Drivers Compatible with Juno Class 2, 24VDC remote mount drivers

Run Length Supplied in 5' spools • Beginning of spool features 22AWG wire which can be removed if longer spool cable is required or to connect multiple strips together • Minimum run length of 1' • Maximum run length of 20'

Operating Environment -30°C to 50°C, 95% humidity (non-condensing)

Life Rated for 170,000 hours.

Labels ETL (ETL) listed for wet locations • IP67 Rated • CE certified • ENERGY STAR® certified • Can be used to comply with Title 24, part 6.

Warranty 5-year limited warranty. Complete warranty terms located at: http://www.acuitybrands.com/ContractorSelect/Products/Items_and_Options.aspx. Specifications subject to change without notice.

ORDERING INFORMATION

Series	Optic	Length	Color Temperature	CRI
10414	FlexConnect with microOptix, 4.8 W/ft	150' 15' 20' 25' 30' 35' 40' 45'	27K 3000K 35K 3500K 40K 4000K	90CRI 90CRI

Ordering Example: 10414 150-3FT 27K 90CRI

Driver/Power Supply Ordering Example: ODPS 96W FCCT IP67

Driver	Max. Watts	Dimming	Options
ODPS Flex 24VDC Remote Driver	22W 23 w/ft	No Dimming	
DDCP Flex 24VDC Remote Driver	40W 40 w/ft	ICCT1 0-10V Rheo Dimming (1% min)	IP67 IP67 Rated
	60W 60 w/ft	ICCS2 Lutron 2-wire Forward Phase (1% min)	
	96W 96 w/ft	ICCS3 Lutron 3-wire Forward Phase (1% min for 40W), (0.1% min for 96W)	

Notes:


- 90CRI available with 37K and 30K only.
- DDCP available with 22W only.
- 22W non-dimming only.
- FCCT1 available in 60W & 96W only.
- ICCS2 available in 40W only.
- ICCS3 available for 40W & 96W.
- IP67 available with FCCT1 only.

Accessories on following pages.

1302 S. Wood Road • Salt Plains, L 50018 • Phone (847) 827-9880 • Fax (847) 827-2923 • Visit us at www.acuitybrands.com/juno
Printed in U.S.A. ©2018 Acuity Brands Lighting, Inc. Rev. 05/31/18 1 of 4

FIXTURE TYPE: W1

HINKLEY & R.



HINKLEY LIGHTING, INC.
33000 PIN OAK PARKWAY | AVON LAKE, OHIO 44012
(PH) 330.653.5500 | (F) 440.653.5555
HINKLEYLIGHTING.COM | FREDRICKRAMOND.COM

Large Wall Mount Lantern 2145TK

ITEM NUMBER	2145TK
BRAND	Hinkley Lighting
MATERIAL	Composite
GLASS	Etched
HEIGHT	24.0"
WIDTH	9.0"
LED COLOR TEMP	3000/0000
VOLTAGE	120v
LED LUMENS	800
WATTAGE	11w LED *Included
TITLE TWENTYFOUR RESC	
CERTIFICATION	C-US Wet Rated
EXTENSION	4.0"
TOP TO OUTLET	12.0"
BACK PLATE	9"W X 24"H

FEATURES AND BENEFITS

- Mounting hardware is hidden on the backplate to ensure a clean silhouette.
- Suitable for use in wet (interior direct splash and outdoor direct rain or sprinkler) locations as defined by NEC and CEC. Meets United States UL Underwriters Laboratories & CSA Canadian Standards Association Product Safety Standards
- Meets California Energy Commission 2016 Title regulations
- Fixture is Dark Sky compliant and engineered to minimize light glare upward into the night sky.
- For complete warranty information visit (hyperlink)
- LED components carry a 5-year limited warranty
- 5 year finish warranty
- The Coastal Elements Collection offers versatile designs, constructed of composite materials and coated with anti-fading finishes, for maximum durability in harsh climates.
- Striking black finish enhances design

FINISH Textured Black

AT HINKLEY, WE EMBRACE THE DESIGN PHILOSOPHY THAT YOU CAN MERGE TOGETHER THE LIGHTING, FURNITURE, ART, COLORS AND ACCESSORIES YOU LOVE INTO A BEAUTIFUL ENVIRONMENT THAT DEFINES YOUR OWN PERSONAL

FIXTURE TYPE: S1

CS
CONTRACTOR SELECT

MRSL
LED Striplight Retrofit Kit



Color Finish	_____
Notes	_____
Trim	_____

Contractor Select® MRSL LED Striplight Retrofit Kit

The MRSL is a cost-effective, energy-saving, permanent retrofit solution for the fluorescent strips. It mounts onto virtually any existing fluorescent channel, replacing T8 and T12 strips, which can save up to 40% on energy costs. Unlike LED tubes, the MRSL LED is a permanent solution that is suitable for applications including retail, warehouse, storage, and more.

FEATURES:

- 3,000/17,500 lumens
- Fit 4" - 5" channel housings
- Available in 4' and 8' configurations

Catalog Number	WPC	Description	Lumens	Wattage	Voltage	Color Temperature	Color Rendering Index	Package Quantity
MRSL L48 3000L B40	0319924491617	4' LED Strip Retrofit Kit	3689	27	48VOLT (120-277)	4000K	80CRI	100
MRSL L96 3000L B40	0019324492575	8' LED Strip Retrofit Kit	6021	49	48VOLT (120-277)	4000K	80CRI	70

More configurations and options are available. [Click here](http://www.acuitybrands.com) or visit www.acuitybrands.com and search for MRSL.

CONTRACTOR SELECT MRSL Page 1 of 2

1st DRB SUBMITTAL pre-app no.: 1006-PA-2018

revisions

date issued: august 21, 2019 project # 18044

preliminary not for construction

VALLEY LIGHT GALLERY 7120 e. mercer lane scottsdale, arizona 85254

EXP. 09-30-2020

3340 EAST MAIN STREET #210 SCOTTSDALE, ARIZONA 85251 TRADEWITHALINE.COM

ALINE ARCHITECTURE CONCEPTS

LIGHTING FIXTURE CUT SHEETS

E601

MSA #

ENGINEERING CONSULTANTS 7878 N 16th Street, Suite 140 Phoenix, AZ 85020 602.943.8424 msa-ec.com

© COPYRIGHT 2018 ALINE ARCHITECTURE CONCEPTS, LLC

