

EXHIBIT "A"

**PARCEL DESCRIPTION
Raintree Office Building
Drainage Easement Abandonment**

That certain Drainage Easement described in Document 2006-0425536, Maricopa County Records (M.C.R.), lying within the southeast quarter of Section 12, Township 3 North, Range 4 East, of the Gila and Salt River Meridian, Maricopa County, Arizona, more particularly described as follows:

COMMENCING at a 55-foot Reference Monument for the east quarter corner of said Section 12, a 3-inch Arizona Department of Transportation aluminum cap flush stamped "55FT LS 22282", from which the southeast corner of said section, a 3-inch Maricopa County aluminum cap flush, bears South 00°31'40" West (basis of bearing), 2589.49 feet;

THENCE North 00°32'14" East, 55.00 feet, to the east quarter corner of said Section 12, and the centerline of Raintree Drive as shown on Final Plat recorded in Book 1401, page 16, M.C.R.;

THENCE along said centerline, North 89°33'28" West, 1181.76 feet;

THENCE leaving said centerline, South 00°26'32" West, 64.09 feet, to the northeast corner of said Drainage Easement and the

POINT OF BEGINNING;

THENCE along the easterly line of said Drainage Easement, South 44°08'54" East, 14.74 feet;

THENCE South 00°24'06" West, 28.10 feet;

THENCE South 46°54'24" West, 20.49 feet, to the southeast corner of said Drainage Easement;

THENCE leaving said easterly line, along the south line of said Drainage Easement, North 89°34'03" West, 60.61 feet, to the southwest corner of said Drainage Easement;

THENCE leaving said south line, along the westerly line of said Drainage Easement, North 37°28'38" West, 21.26 feet;

THENCE North 00°24'06" East, 16.34 feet;

THENCE North 54°20'46" East, 33.27 feet, to the northwest corner of said Drainage Easement;

THENCE leaving said westerly line, along the north line of said Drainage Easement, South 89°34'03" East, 51.29 feet, to the **POINT OF BEGINNING.**

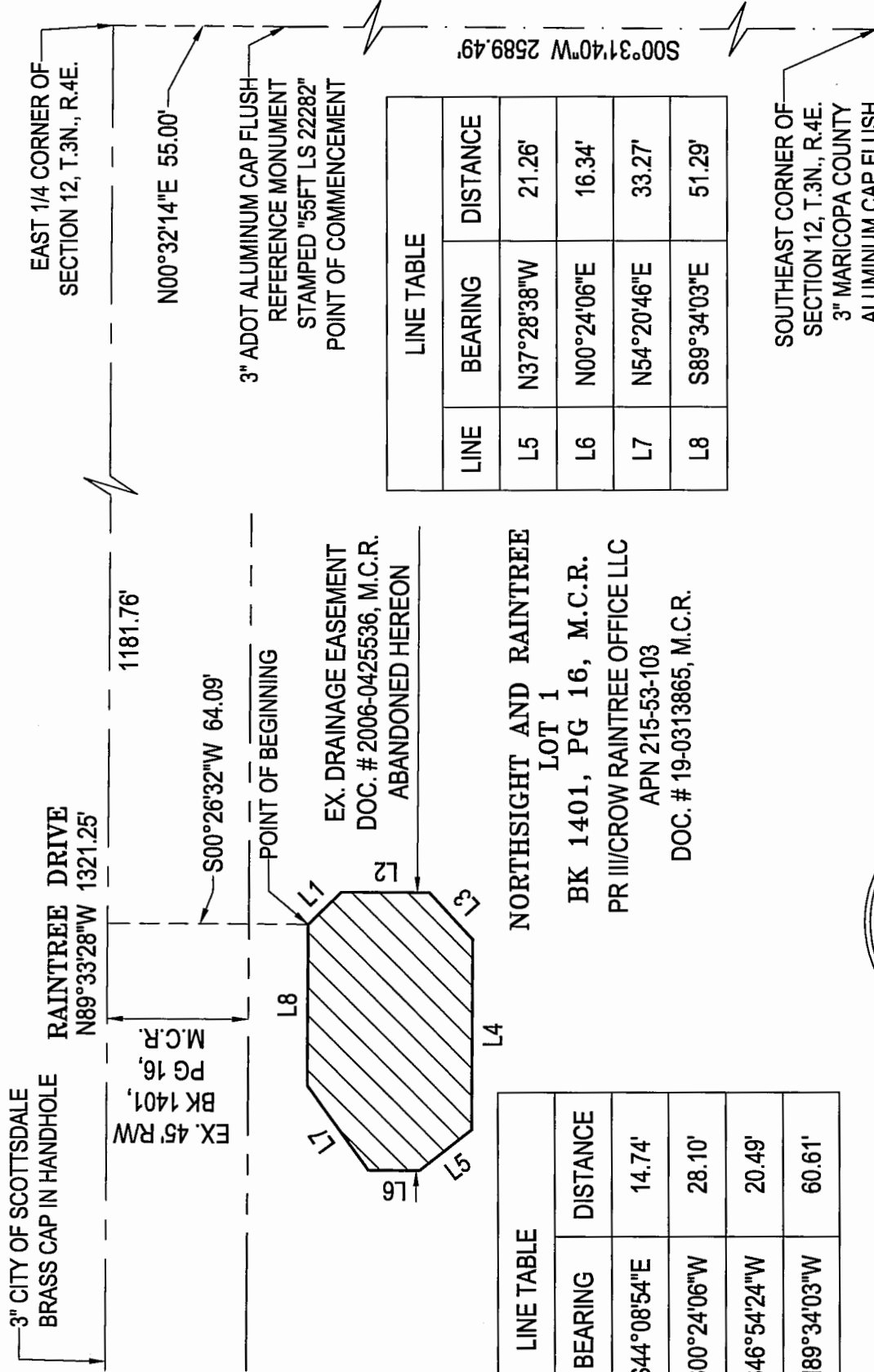
Containing 4,134 square feet or 0.0949 acres, more or less.

Subject to existing right-of-ways and easements.



Parcel Description
Raintree Office Building
Drainage Easement Abandonment

August 19, 2019
WP# 184803
Page 2 of 2
9-PP-2019
09/20/2019



LINE TABLE		
LINE	BEARING	DISTANCE
L5	N37°28'38"W	21.26'
L6	N00°24'06"E	16.34'
L7	N54°20'46"E	33.27'
L8	S89°34'03"E	51.29'

LINE TABLE		
LINE	BEARING	DISTANCE
L1	S44°08'54"E	14.74'
L2	S00°24'06"W	28.10'
L3	S46°54'24"W	20.49'
L4	N89°34'03"W	60.61'

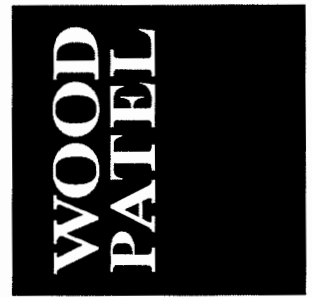


EXHIBIT "A"
 RAINTREE OFFICE BUILDING
 DRAINAGE EASEMENT ABANDONMENT
 08-19-2019
 WP# 184803
 PAGE 1 OF 1
 NOT TO SCALE
 Z:\2018\184803\Survey\Legal\4803-L02.dwg