

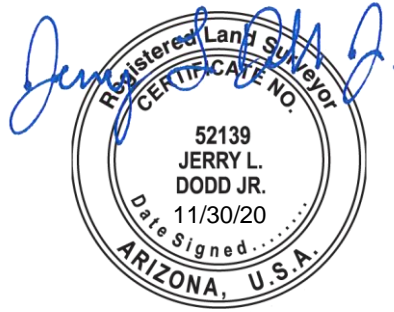
EXHIBIT 'A'

LEGAL DESCRIPTION

**PUBLIC NON-MOTORIZED ACCESS EASEMENT
DEDICATION**

THE EAST 15 FEET, WHICH LIES IN THE PARCEL OF LAND DESCRIBED AS PARCEL NO. 2 IN THE TRUSTEE'S DEED AND BILL OF SALE RECORDED AS NUMBER 2011-1003433, RECORDS OF MARICOPA COUNTY, ARIZONA, SITUATED IN G.L.O. LOT 7 OF SECTION 7, TOWNSHIP 3 NORTH, RANGE 5 EAST OF THE GILA AND SALT RIVER BASE AND MERIDIAN, CITY OF SCOTTSDALE, MARICOPA COUNTY, ARIZONA.

EASEMENT DEDICATION CONTAINING 4,935 SQUARE FEET OR 0.11 ACRES, MORE OR LESS.



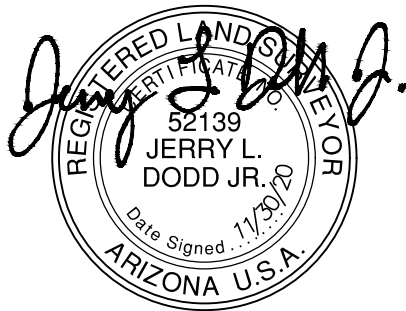
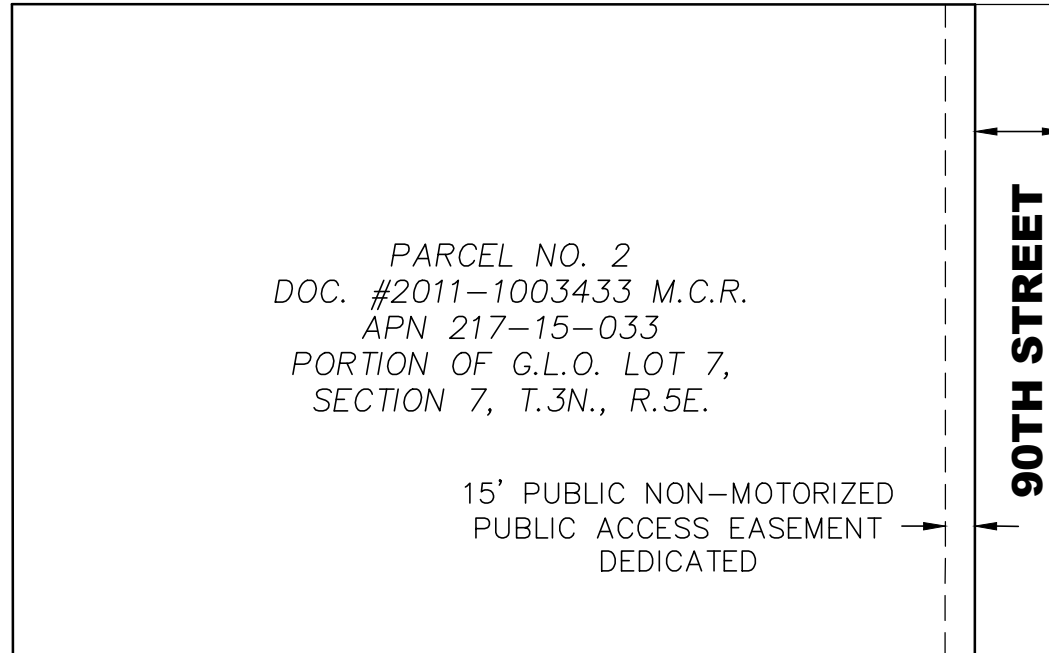
SURVEY INNOVATION GROUP, INC.
22425 N. 16TH STREET, SUITE 1
PHOENIX, AZ 85024

SIG JOB NO. P5338

EXHIBIT 'B'
PUBLIC NON-MOTORIZED ACCESS EASEMENT
DEDICATION



NTS



NOTE: THIS IS NOT
A BOUNDARY SURVEY

SIG JOB# P5338