

TODD+ASSOCIATES

CRITICAL THINKING / CREATIVE DESIGN

**GREYSTAR
ACTIVE INDEPENDENT LIVING
SCOTTSDALE, ARIZONA**

**Existing Conditions
Photo Exhibit**

**TAI Project No. 20-2006-02
September 15, 2020**

GREYSTAR

**3200 E. Camelback #255
Phoenix, AZ 85018**

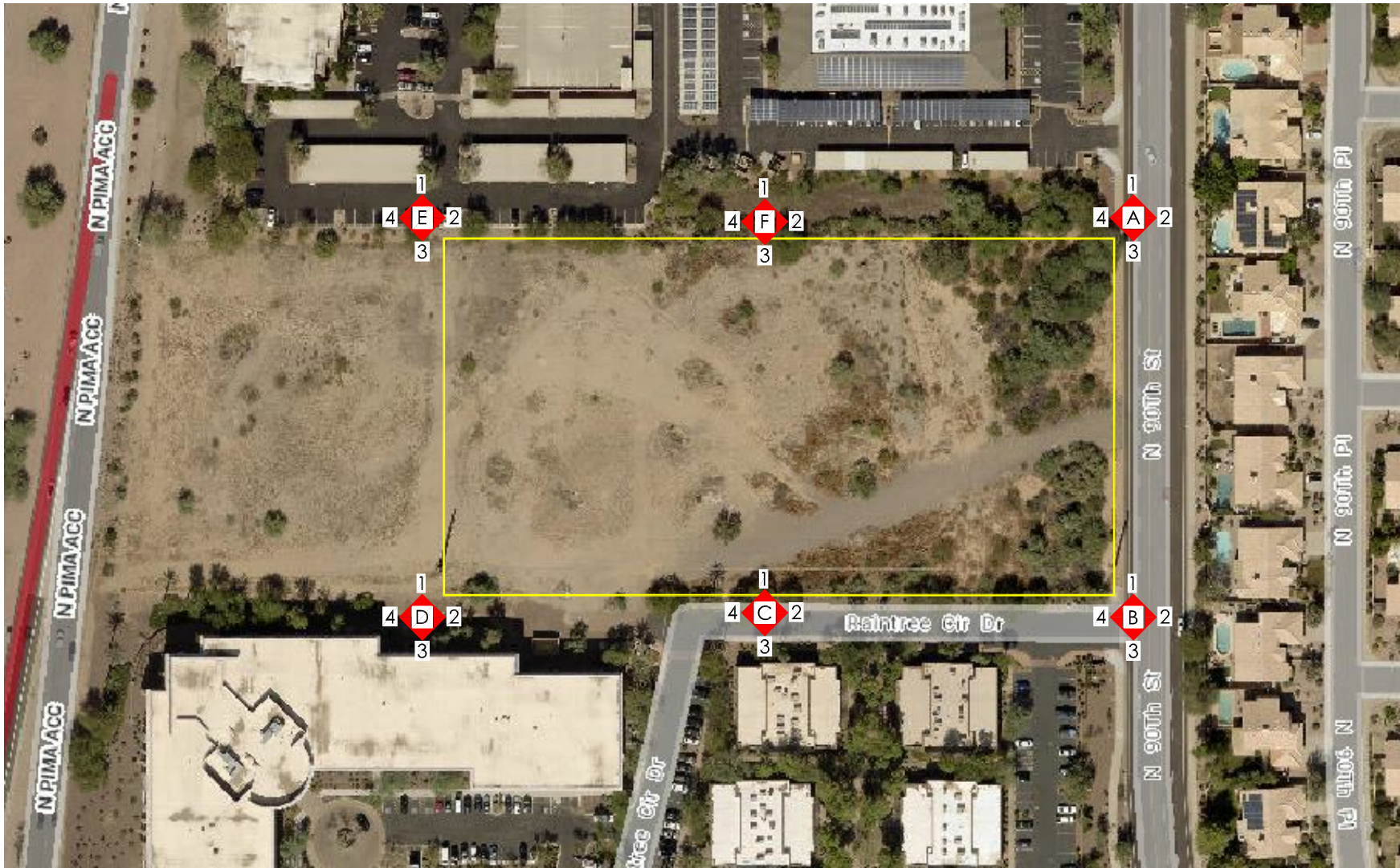


4019 NORTH 44TH STREET PHOENIX, ARIZONA 85018 | P 602.952.8280 F 602.952.8995


ARCHITECTURE. PLANNING. LANDSCAPE ARCHITECTURE.

J:\Prj20\20-2006-00\1-Pre-Design\Photos\07-09-20 PD-Existing Site Conditions BB\Existing Conditions Booklet\Cover.docx

16-ZN-2020
10/20/20



1
4 **A** 2
3
PHOTOGRAPH LABEL
& DIRECTION OF VIEW




GREYSTAR ACTIVE INDEPENDENT LIVING
90TH STREET AND RAINTREE
SCOTTSDALE, ARIZONA
JOB NO. - 20-2006-00

SEPT. 15, 2020

EXISTING CONDITIONS
PHOTO EXHIBIT

Residential Healthcare Facility - Rezoning (20-2006-00)



A-01



A-02

Residential Healthcare Facility - Rezoning (20-2006-00)



A-03



A-04

Residential Healthcare Facility - Rezoning (20-2006-00)



B-01



B-02

Residential Healthcare Facility - Rezoning (20-2006-00)



B-03



B-04

Residential Healthcare Facility - Rezoning (20-2006-00)



C-01



C-02

Residential Healthcare Facility - Rezoning (20-2006-00)



C-03



C-04

Residential Healthcare Facility - Rezoning (20-2006-00)



D-01



D-02

Residential Healthcare Facility - Rezoning (20-2006-00)



D-03



D-04

Residential Healthcare Facility - Rezoning (20-2006-00)



E-01



E-02

Residential Healthcare Facility - Rezoning (20-2006-00)



E-03



E-04

Residential Healthcare Facility - Rezoning (20-2006-00)



F-01



F-02

Residential Healthcare Facility - Rezoning (20-2006-00)



F-03



F-04