



**Lot #6**  
Mike Loughrey

**Lot #7**  
Walid Almiti

Walid Almiti

**Lot #9**  
Debbie Lentine

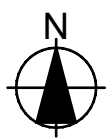
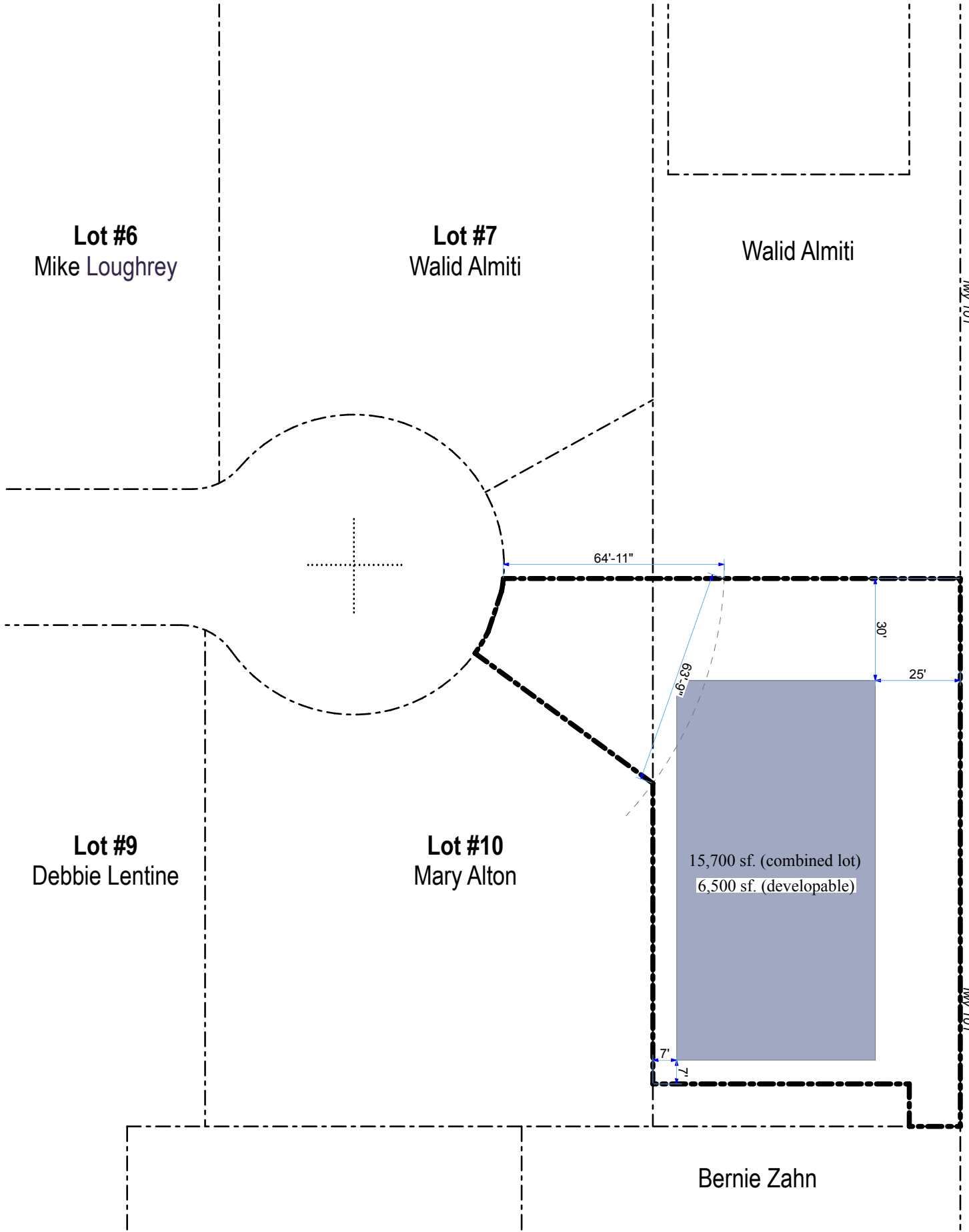
**Lot #10**  
Mary Alton

15,700 sf. (combined lot)  
6,500 sf. (developable)

Bernie Zahn

FWY 101

FWY 101



**Lot #6**  
Mike Loughrey

**Lot #7**  
Walid Almiti

Walid Almiti

hwy 101

**N 87th St**

64'-11"

63'-6"

30'

25'

**Lot #9**  
Debbie Lentine

**Lot #10**  
Mary Alton

15,700 sf. (combined lot)  
6,500 sf. (developable)

hwy 101

7'  
7'

Bernie Zahn

