



EXPIRES 06/30/2022

PRELIMINARY NOT FOR CONSTRUCTION

LANDSCAPE IMPROVEMENTS
The Miller
500 W. Camelback Rd. Scottsdale, AZ



DESIGNED BY: PV/MD
DRAWN BY: MD
CHECKED BY: PV/MD
DATE: February 1, 2021
REVISION: 06/30/2021
Second Submittal

The Miller Rezone Submittal

CLS-1

1 of 2

PLANT PALETTE

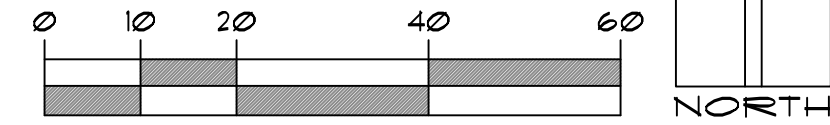
SYMBOL	BOTANICAL NAME	COMMON NAME	SIZE
TREES			
	<i>Acacia salicina</i>	Willow Acacia	15" Cal. 2" Single-Trunk
	<i>Caesalpinia cacalaco</i>	Caescalote	15" Cal. Multi-Trunk
	<i>Chitalpa tashkentensis</i>	Chitalpa	2" Cal. Single-Trunk
	<i>Fraxinus velutina</i> 'Fanwest'	Fanwest Ash	15" Cal. 2" Single-Trunk
	<i>Olea europaea</i> 'Wilsonii'	Fruitless Olive	3" Cal. Multi-Trunk
	<i>Parkinsonia</i> hybrid 'Desert Museum'	Desert Museum Palo Verde	15" Cal. Multi-Trunk
	<i>Phoenix dactylifera</i>	Date Palm	18" CTH
	<i>Prosopis</i> sp. 'Rio Salado'	Thornless Hybrid Mesquite	15" Cal. Multi-Trunk
	<i>Quercus virginiana</i> 'Heritage'	Southern Live Oak	2" Cal. Single-Trunk
	<i>Ulmus parvifolia</i> 'Drake'	Drake Chinese Elm	15" Cal. Single-Trunk
	<i>Washingtonia robusta</i>	Mexican Fan Palm	25' CTH 30' CTH 35' CTH
ACCENTS/VINES			
	<i>Aloe barbadensis</i>	Medicinal Aloe	5 Gal.
	<i>Aloe X</i> 'Topaz'	Topaz Aloe	5 Gal.
	<i>Bambusa multiplex</i> 'Golden Goddess'	Golden Goddess	5 Gal.
	<i>Bougainvillea</i> 'Barbara Karst'	Vine Bougainvillea	5 Gal.
	<i>Bougainvillea</i> 'Torch Glow'	'Torch Glow' Bougainvillea	5 Gal.
	<i>Cycas revoluta</i>	Sago Palm	5 Gal.
	<i>Dasylirion wheeleri</i>	Desert Spoon	5 Gal.
	<i>Dasylirion texanum</i>	Green Desert Spoon	5 Gal.
	<i>Dasylirion quadrangulum</i>	Toothless Spoon	5 Gal.
	<i>Nolina nelsonii</i>	Blue Nolina	5 Gal.
	<i>Gesseium sempervirens</i>	Carolina Jasmine	5 Gal.
	<i>Hesperaloe funifera</i>	Giant Hesperaloe	5 Gal.
	<i>Hesperaloe parviflora</i> 'Flora'	Brakelights Red Yucca	5 Gal.
	<i>Bignonia capreolata</i>	Tangerine Beauty Crossvine	5 Gal.
	<i>Focillanthus macrocarpus</i>	Lady Slipper Plant	5 Gal.
	<i>Phoenix roebelenii</i>	Pigmy Date Palm	5 Gal.
	<i>Rosa banksiae</i>	Lady Banks Rose	5 Gal.
	<i>Tecoma stans</i> 'Orange Jubilee'	Orange Jubilee Vine	5 Gal.
	<i>Chamaerops humilis</i>	Mediterranean Fan Palm	5 Gal.
SHRUBS			
	<i>Dodonaea viscosa</i> 'Furpurea'	Purple Hopsced Bush	5 Gal.
	<i>Eremophila hygrophana</i>	Bluebells	5 Gal.
	<i>Hibiscus rosa-sinensis</i> 'Vice President'	Dwarf Hibiscus	5 Gal.
	<i>Leucophyllum frutescens</i> 'Heavenly Cloud'	Heavenly Cloud Sage	5 Gal.
	<i>Ruellia perinularis</i>	Ruellia	5 Gal.
	<i>Rraphiolepis indica</i>	Indian Hawthorn	5 Gal.
	<i>Russelia equisetiformis</i>	Coral Fountain	5 Gal.
	<i>Ruellia brittoniana</i>	Ruellia	5 Gal.
	<i>Tecoma</i> hybrid 'Balls of Fire'	Balls of Fire	5 Gal.
	<i>Tecoma</i> hybrid 'Orange Jubilee'	Orange Jubilee	5 Gal.
GROUND COVERS			
	<i>Lantana montevidensis</i>	Purple Trailing Lantana	1 Gal.
	<i>Lantana</i> hybrid 'New Gold'	New Gold Lantana	1 Gal.
	<i>Lantana</i> 'Dallas Red'	Dallas Red Lantana	1 Gal.
	<i>Liriope muscari</i>	Lily Turf	1 Gal.
	<i>Wedelia trilobata</i>	Wedelia	1 Gal.
	<i>Eremophila glabra</i> 'Mingnew Gold'	Outback Sunrise	1 Gal.
	<i>Eremophila glabra</i> 'Winter Blaze'	Winter Blaze	1 Gal.
MISCELLANEOUS			
	DG	Decomposed granite in all planting areas 2" depth Color: Mahogany - 3/4" screened	
	SYN TURF	Synthetic Turf - Dog Park	

* DENOTES PLANT MATERIAL NOT ON THE ADUR LIST.
Note: Install Western Organics Custom Blend Over Structure Soil or Equal in all planters on the podium deck.



LANDSCAPE PLAN

SCALE: 1"=20'-0"



GENERAL NOTES

1. CONCEPTUAL LANDSCAPE PLAN IS SCHEMATIC IN NATURE. AT THE TIME OF LANDSCAPE CONSTRUCTION DRAWINGS, ACTUAL LOCATIONS, QUANTITIES, SIZES, AND SPECIES SHALL BE DETERMINED AND WILL BE PER CITY CODES.
2. ALL TREES USED WITHIN THIS PROJECT SHALL BE NURSERY GROWN. EXACT LOCATIONS AND QUANTITIES SHALL BE DETERMINED ON LANDSCAPE CONSTRUCTION DRAWINGS. ALL EXISTING TREES SHALL BE PROTECTED DURING CONSTRUCTION.
3. ALL LANDSCAPE AREAS SHALL RECEIVE AN AUTOMATIC IRRIGATION SYSTEM.
4. ALL PLANT MATERIAL SHALL BE INSTALLED PER CITY REQUIREMENTS. PLANT MATERIAL INSTALLED WITHIN SIGHT DISTANCE TRIANGLES SHALL BE OF A SPECIES THAT DOES NOT GROW TO A HEIGHT OF MORE THAN 30" AND SHALL BE MAINTAINED PER CITY REQUIREMENTS.
5. ALL NON-TURF AREAS SHALL RECEIVE A 2" DEPTH OF DECOMPOSED GRANITE.
6. THE RETENTION SHOWN ON THE PLANS IS CONCEPTUAL IN NATURE. REFER TO THE ENGINEERING PLANS FOR ACTUAL GRADING AND DRAINAGE CONFIGURATIONS.
7. ALL EARTHWORK WILL BE DONE TO DRAIN AWAY FROM SIDEWALKS AND STRUCTURES.
8. FINAL SITE PLAN CONFIGURATION MAY VARY AT THE TIME OF FINAL PLAT APPROVAL.
9. ADDITIONAL PLANT MATERIAL MAY BE INTRODUCED AS DIFFERENT VARIETIES BECOME AVAILABLE THROUGH LOCAL NURSERIES AND IF THEY ARE CONSISTENT WITH THE OVERALL THEME OF THIS PROJECT.

WATER INTENSIVE LANDSCAPE CALCULATIONS	
PERMITTED	PROVIDED
(9,000 SF. x 0.10) + (1,836 SF. x 0.05) = 992 SF.	(40 x SF. OF COVERAGE) = 464 SF.

AREA CALCS

Right-Of-Way Landscape Area: 3,066 sf

Parking Lot Landscape: 0 sf

On-Site Landscape Area: 7,170 sf

Landscape Plan



EXPIRES 06/30/2022

PRELIMINARY NOT FOR CONSTRUCTION

LANDSCAPE IMPROVEMENTS
The Miller
500 W. Camelback Rd. Scottsdale, AZ



DESIGNED BY: PV/MD
DRAWN BY: MD
CHECKED BY: PV/MD
DATE: February 1, 2021
REVISION: 06/30/2021
Second Submittal

Landscape Plan

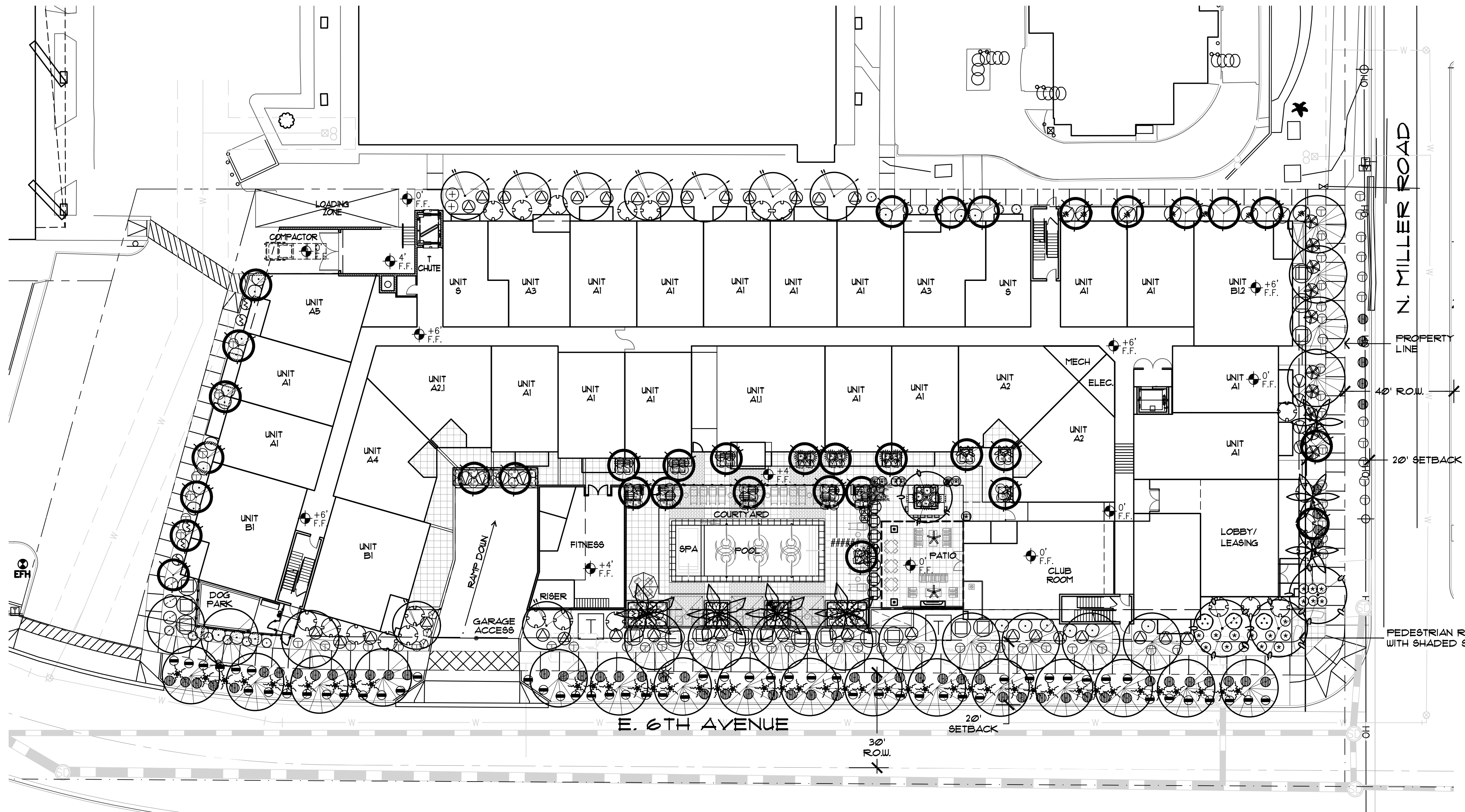
The Miller Rezone Submittal

CLS-1

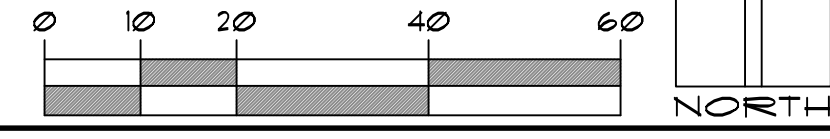
PLANT PALETTE

SYMBOL	BOTANICAL NAME	COMMON NAME	SIZE
TREES			
	Acacia salicina	Willow Acacia	15" Cal. Single-Trunk
	Caesalpinia cacalaco	Caescalote	15" Cal. Multi-Trunk
	Chitalpa tashkentensis	Chitalpa	2" Cal. Single-Trunk
	* Fraxinus velutina 'Fanwest'	Fanwest Ash	15" Cal. Single-Trunk
	Olea europaea 'Wilsonii'	Fruitless Olive	3" Cal. Multi-Trunk
	Parkinsonia hybrid 'Desert Museum'	Desert Museum Palo Verde	15" Cal. Multi-Trunk
	Phoenix dactylifera	Date Palm	18" CTH
	Prosopis sp. 'Rio Salado'	Thornless Hybrid Mesquite	15" Cal. Multi-Trunk
	Quercus virginiana 'Heritage'	Southern Live Oak	2" Cal. Single-Trunk
	* Ulmus parvifolia 'Drake'	Drake Chinese Elm	15" Cal. Single-Trunk
	Washingtonia robusta	Mexican Fan Palm	25' CTH 30' CTH 35' CTH
ACCENTS/VINES			
	Aloe barbadensis	Medicinal Aloe	5 Gal.
	Aloe X 'Topaz'	Topaz Aloe	5 Gal.
	* Bambusa multiplex 'Golden Goddess'	Golden Goddess	5 Gal.
	Bougainvillea 'Barbara Karst'	Vine Bougainvillea	5 Gal.
	Bougainvillea 'Torch Glow'	'Torch Glow' Bougainvillea	5 Gal.
	Cycas revoluta	Sago Palm	5 Gal.
	Dasylirion wheeleri	Desert Spoon	5 Gal.
	Dasylirion texanum	Green Desert Spoon	5 Gal.
	Dasylirion quadrangulum	Toothless Spoon	5 Gal.
	Nolina nelsonii	Blue Nolina	5 Gal.
	* Gelsemium sempervirens	Carolina Jasmine	5 Gal.
	Hesperaloe funifera	Giant Hesperaloe	5 Gal.
	Hesperaloe parviflora 'Flora'	Brakelights Red Yucca	5 Gal.
	* Bignonia capreolata	Tangerine Beauty Crossvine	5 Gal.
	Fedilanthus macrocarpus	Lady Slipper Plant	5 Gal.
	* Phoenix roebelenii	Pigmy Date Palm	5 Gal.
	Rosa banksiae	Lady Banksia Rose	5 Gal.
	Tecoma stars 'Orange Jubilee'	Orange Jubilee Vine	5 Gal.
	Chamaerops humilis	Mediterranean Fan Palm	5 Gal.
SHRUBS			
	Dodonaea viscosa 'Furpurea'	Purple Hopseed Bush	5 Gal.
	Eremophila hydrophana	Bluebells	5 Gal.
	* Hibiscus rosa-sinensis 'Vice President'	Dwarf Hibiscus	5 Gal.
	Leucophyllum frutescens 'Heavenly Cloud'	Heavenly Cloud Sage	5 Gal.
	Ruellia perinularis	Ruellia	5 Gal.
	* Rhipidolepis indica	Indian Hawthorn	5 Gal.
	* Russelia equisetiformis	Coral Fountain	5 Gal.
	Ruellia brittoniana	Ruellia	5 Gal.
	Tecoma hybrid 'Balls of Fire'	Balls of Fire	5 Gal.
	Tecoma hybrid 'Orange Jubilee'	Orange Jubilee	5 Gal.
GROUND COVERS			
	Lantana montevidensis	Purple Trailing Lantana	1 Gal.
	Lantana hybrid 'New Gold'	New Gold Lantana	1 Gal.
	Lantana 'Dallas Red'	Dallas Red Lantana	1 Gal.
	* Liriope muscari	Lily Turf	1 Gal.
	Wedelia trilobata	Wedelia	1 Gal.
	Eremophila glabra 'Mingnew Gold'	Outback Sunrise	1 Gal.
	Eremophila glabra 'Winter Blaze'	Winter Blaze	1 Gal.
MISCELLANEOUS			
	DG	Decomposed granite in all planting areas 2" depth Color: Mahogany - 3/4" screened	
	SYN. TURF	Synthetic Turf - Dog Park	

* DENOTES PLANT MATERIAL NOT ON THE ADUR LIST.
Note: Install Western Organics Custom Blend Over Structure Soil or Equal in all planters on the podium deck.



LANDSCAPE PLAN
SCALE: 1"=20'-0"



WATER INTENSIVE LANDSCAPE CALCULATIONS	
PERMITTED	PROVIDED
(9,000 SF. x 0.10) + (1,836 SF. x 0.05) = 992 SF.	(40 x 56. OF COVERAGE) = 464 SF.

AREA CALCS

Right-Of-Way Landscape Area: 3,066 sf
Parking Lot Landscape: 0 sf
On-Site Landscape Area: 7,110 sf

GENERAL NOTES

- CONCEPTUAL LANDSCAPE PLAN IS SCHEMATIC IN NATURE. AT THE TIME OF LANDSCAPE CONSTRUCTION DRAWINGS, ACTUAL LOCATIONS, QUANTITIES, SIZES, AND SPECIES SHALL BE DETERMINED AND WILL BE PER CITY CODES.
- ALL TREES USED WITHIN THIS PROJECT SHALL BE NURSERY GROWN. EXACT LOCATIONS AND QUANTITIES SHALL BE DETERMINED ON LANDSCAPE CONSTRUCTION DRAWINGS. ALL EXISTING TREES SHALL BE PROTECTED DURING CONSTRUCTION.
- ALL LANDSCAPE AREAS SHALL RECEIVE AN AUTOMATIC IRRIGATION SYSTEM.
- ALL PLANT MATERIAL SHALL BE INSTALLED PER CITY REQUIREMENTS. PLANT MATERIAL INSTALLED WITHIN SIGHT DISTANCE TRIANGLES SHALL BE OF A SPECIES THAT DOES NOT GROW TO A HEIGHT OF MORE THAN 30" AND SHALL BE MAINTAINED PER CITY REQUIREMENTS.
- ALL NON-TURF AREAS SHALL RECEIVE A 2" DEPTH OF DECOMPOSED GRANITE.
- THE RETENTION SHOWN ON THE PLANS IS CONCEPTUAL IN NATURE. REFER TO THE ENGINEERING PLANS FOR ACTUAL GRADING AND DRAINAGE CONFIGURATIONS.
- ALL EARTHWORK WILL BE DONE TO DRAIN AWAY FROM SIDEWALKS AND STRUCTURES.
- FINAL SITE PLAN CONFIGURATION MAY VARY AT THE TIME OF FINAL PLAT APPROVAL.
- ADDITIONAL PLANT MATERIAL MAY BE INTRODUCED AS DIFFERENT VARIETIES BECOME AVAILABLE THROUGH LOCAL NURSERIES AND IF THEY ARE CONSISTENT WITH THE OVERALL THEME OF THIS PROJECT.

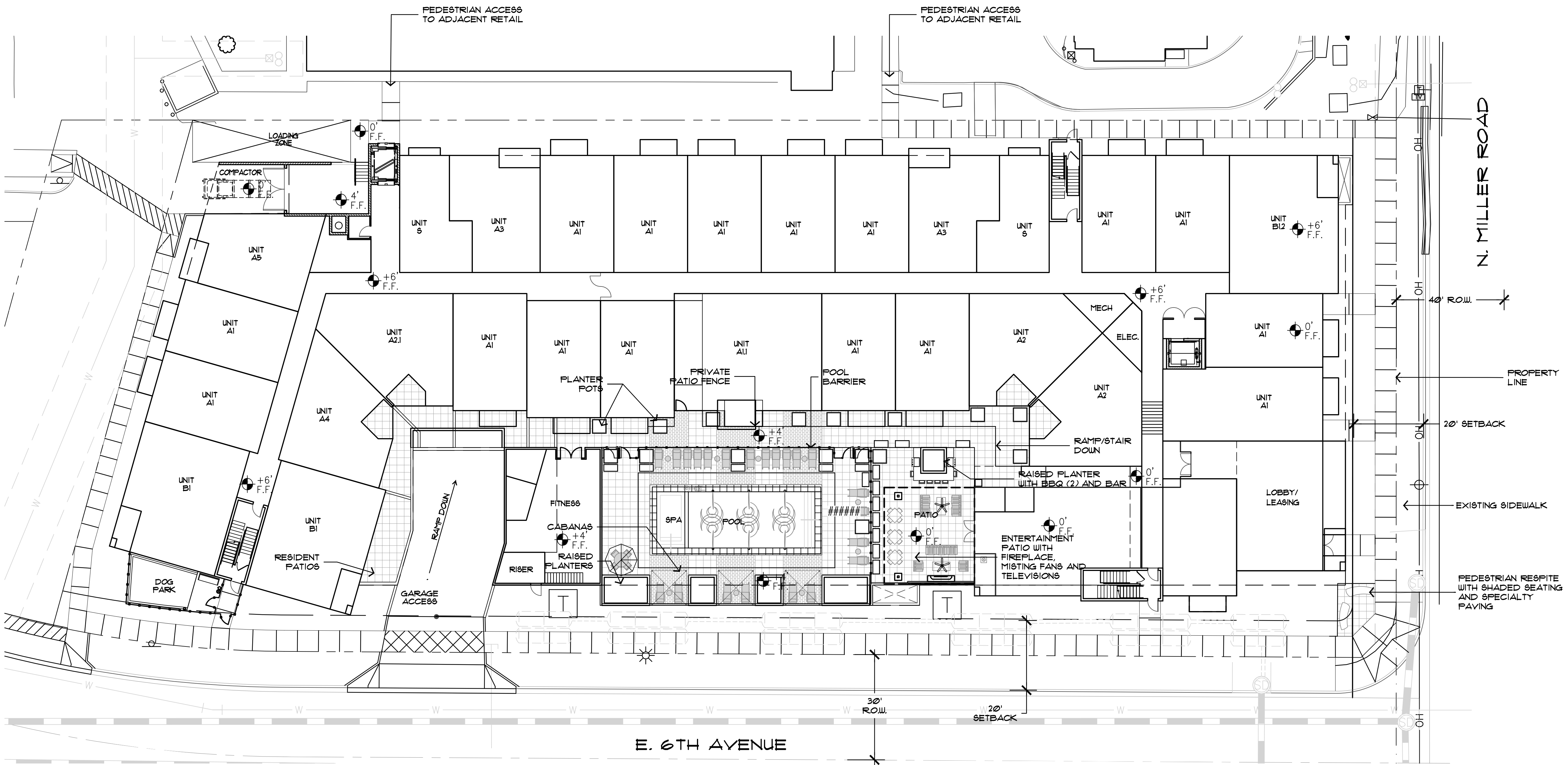


Collaborative V
Design Studio Inc.
7116 East 1st Ave.,
Suite 103
Scottsdale, Arizona
85251
office: 480-347-0590
fax: 480-656-6012
CONTACT: MATT DRAGER
MATT@COLLABORATIVEV.COM



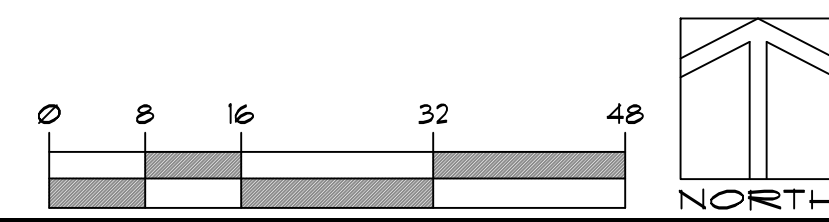
EXPIRES 06/30/2022

PRELIMINARY
NOT FOR
CONSTRUCTION



LANDSCAPE IMPROVEMENTS
The Miller
500 W. Camelback Rd. Scottsdale, AZ

HARDSCAPE PLAN
SCALE: 1/16"=1'-0"



DESIGNED BY:	PV/MD
DRAWN BY:	MD
CHECKED BY:	PV/MD
DATE:	February 1, 2021
REVISION:	06/30/2021 Second Submittal

Hardscape Plan

The Miller
Rezoning Submittal

CLS-2