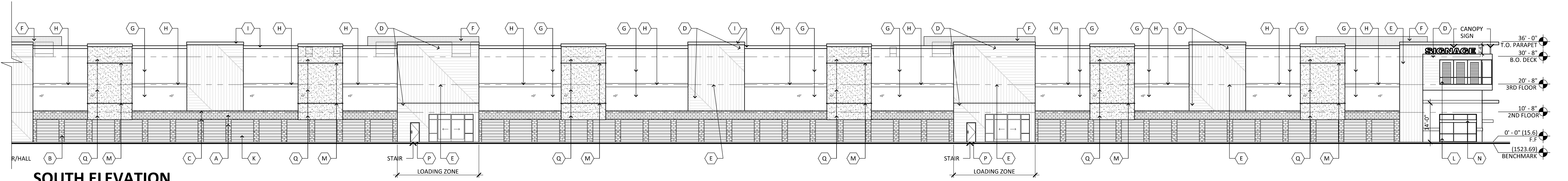


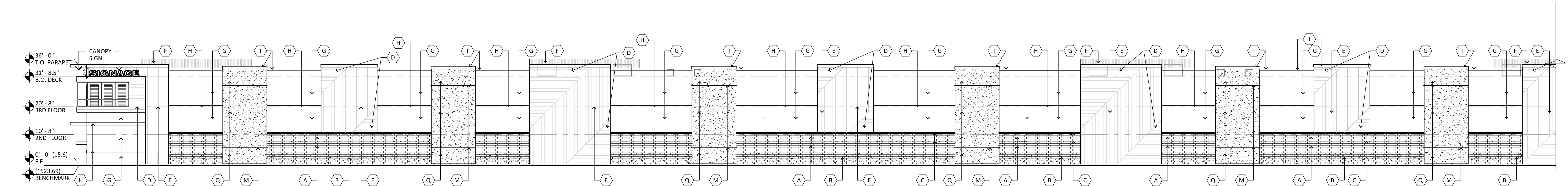
COLOR AND FINISH LEGEND

- | | | | | | |
|--|--|--|--|--|---|
| A 8X8X16 C.M.U. BLOCK:
MFG: SUPERLITE
SPEC: SMOOTH FACE
COLOR: MOJAVE BROWN | D METAL PANELS:
MFG: ATAS
SPEC: DWF-HORIZONTAL
COLOR: REDWOOD | G PAINTED STUCCO:
MFG: SHERWIN WILLIAMS
COLOR: PAVILION BEIGE
SPEC: SW 7512 | J ALUMINUM STOREFRONT:
MFG: KAWNEER
FINISH: DARK BRONZE | M PAINTED STUCCO:
MFG: SHERWIN WILLIAMS
COLOR: URBANE BRONZE
SPEC: SW 7048 | P PAINTED METAL DOORS:
MFG: SHERWIN WILLIAMS
COLOR: URBANE BRONZE
SPEC: SW 7048 |
| B 8X8X16 C.M.U. BLOCK:
MFG: SUPERLITE
SPEC: SPLIT FACE
COLOR: HOP! SANDSTONE | E METAL PANELS:
MFG: ATAS
SPEC: DWF-VERTICAL
COLOR: MISSION RED | H PAINTED STUCCO:
MFG: SHERWIN WILLIAMS
COLOR: DRY DOCK
SPEC: SW 7502 | K ROLL UP DOORS:
MFG: JANUS
COLOR: CONTINENTAL BROWN | N PAINTED METAL CANOPY:
MFG: SHERWIN WILLIAMS
COLOR: URBANE BRONZE
SPEC: SW 7048 | Q PAINTED STUCCO:
MFG: SHERWIN WILLIAMS
COLOR: NEUTRAL GROUND
SPEC: SW 7568 |
| C 8X4X16 C.M.U. BLOCK:
MFG: SUPERLITE
SPEC: SPLIT FACE
COLOR: HOP! SANDSTONE | F METAL PANELS:
MFG: ATAS
SPEC: METAFOR-VERTICAL
COLOR: SIERRA TAN | I PAINTED METAL COPING:
MFG: SHERWIN WILLIAMS
COLOR: URBANE BRONZE
SPEC: SW 7048 | L GLAZING
MFG: SOLARBAN
COLOR: SOLARBAN 90 (2)
SOLARGRAY + CLEAR
VLT: 26% | O PAINTED METAL CANOPY:
MFG: SHERWIN WILLIAMS
COLOR: DRY DOCK
SPEC: SW 7502 | |



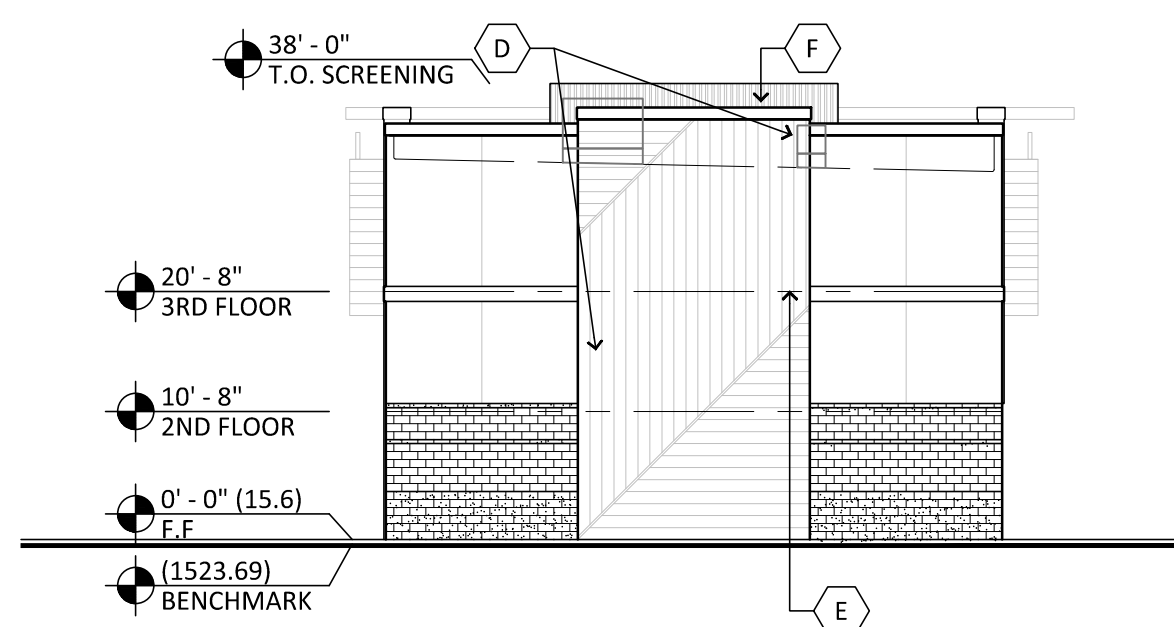
SOUTH ELEVATION

SCALE: 1/16" = 1'-0"



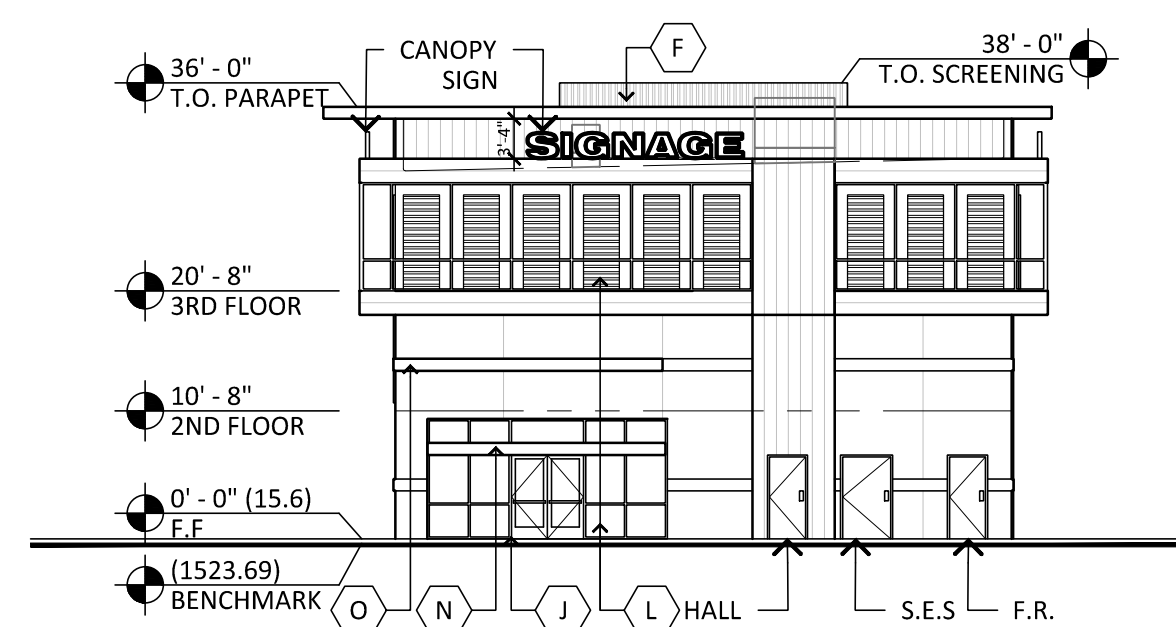
NORTH ELEVATION

SCALE: 1/16" = 1'-0"



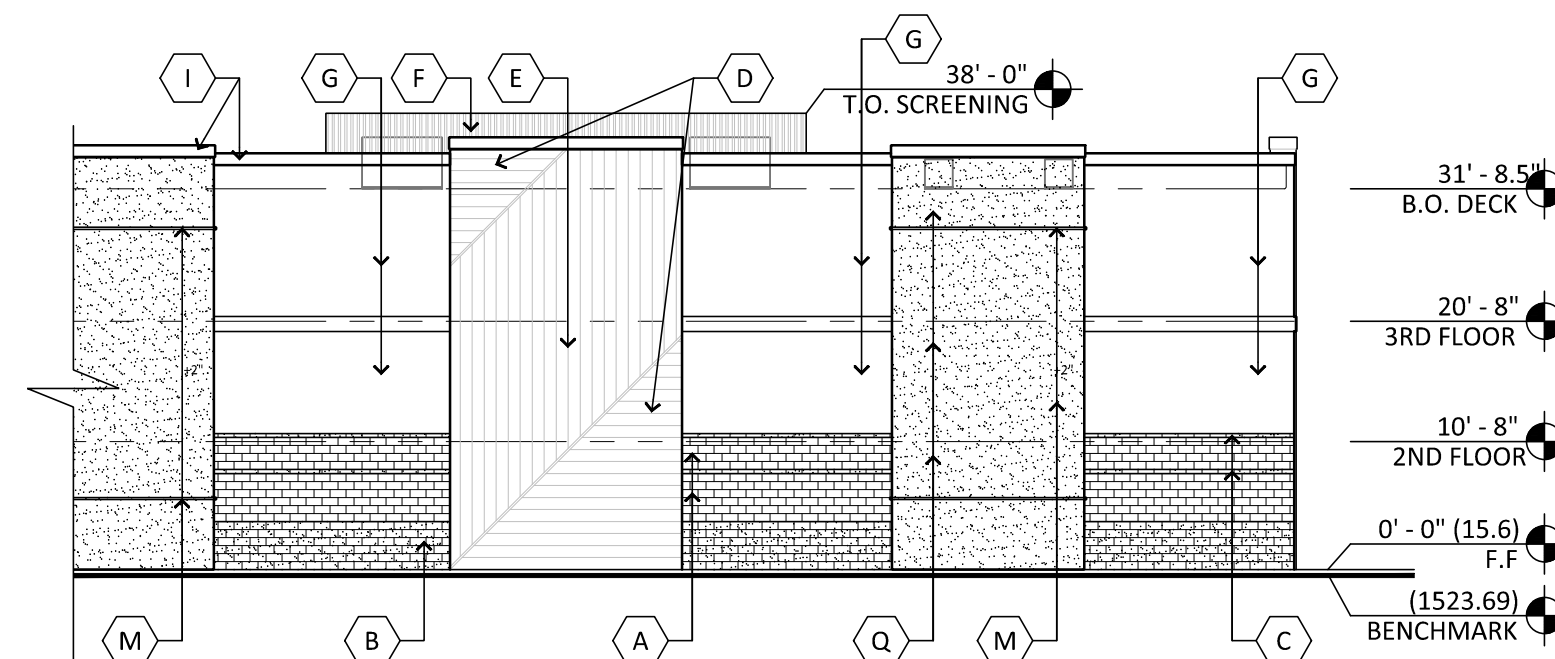
WEST ELEVATION

SCALE: 1/16" = 1'-0"



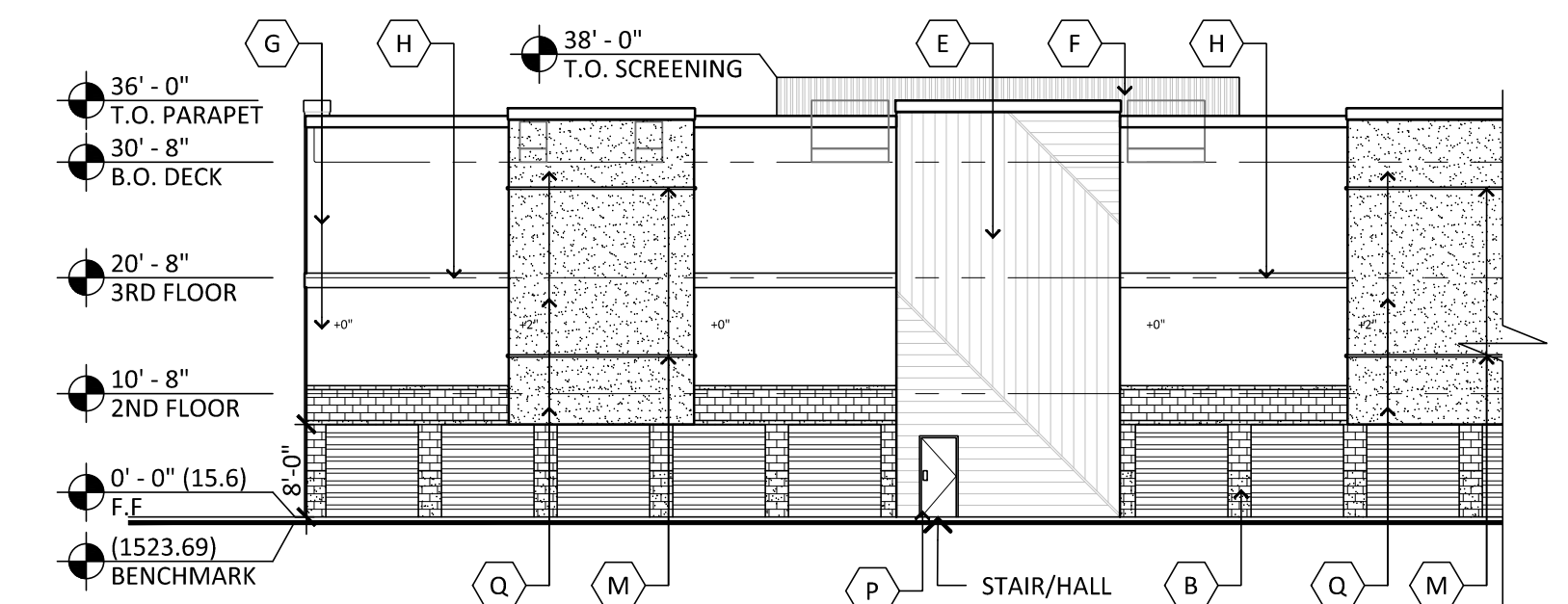
EAST ELEVATION

SCALE: 1/16" = 1'-0"



PARTIAL NORTH ELEVATION

SCALE: 1/16" = 1'-0"



PARTIAL SOUTH ELEVATION

SCALE: 1/16" = 1'-0"

PROPOSED SELF-STORAGE
 NWC PIMA ROAD AND FRANK LLOYD WRIGHT BOULEVARD
 SCOTTSDALE, ARIZONA
 DATE: 12-27-2021 (PRELIMINARY NOT FOR CONSTRUCTION)



© 2021 RKA
 ARCHITECTS, INC. ALL
 RIGHTS RESERVED.
 THIS DRAWING IS AN
 INSTRUMENT OF
 SERVICE. IT IS THE
 PROPERTY OF RKA
 ARCHITECTS, INC. AND
 MAY NOT BE
 DUPLICATED, USED OR
 DISCLOSED WITHOUT
 WRITTEN PERMISSION
 OF THE ARCHITECT.

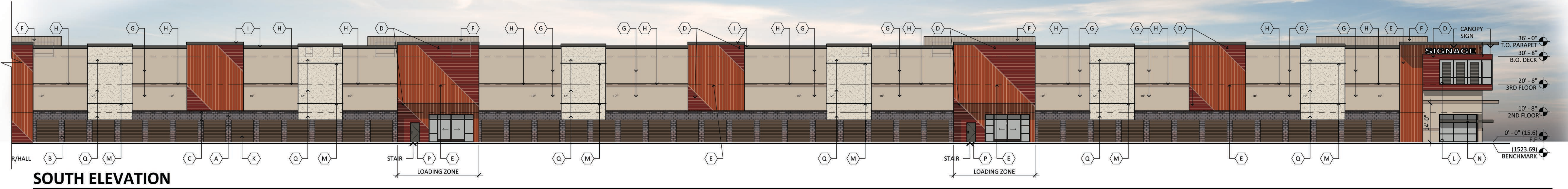
EL-1
 ELEVATION

RKAA# 19120.50



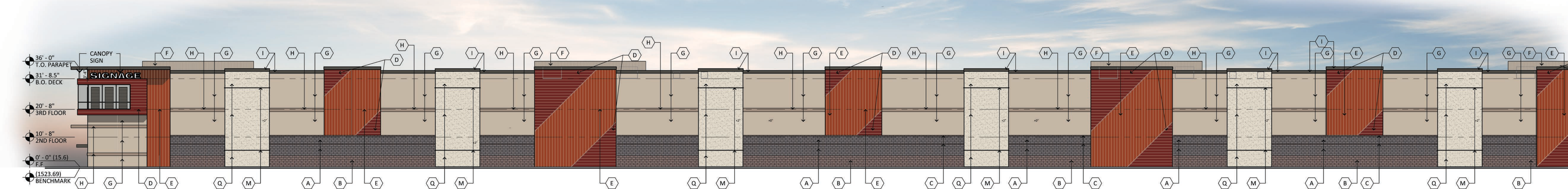
COLOR AND FINISH LEGEND

- | | | | | | |
|---|--|--|--|--|---|
| A 8X8X16 C.M.U. BLOCK:
MFG: SUPERLITE
SPEC: SMOOTH FACE
COLOR: MOJAVE BROWN | D METAL PANELS:
MFG: ATAS
SPEC: DWF-HORIZONTAL
COLOR: REDWOOD | G PAINTED STUCCO:
MFG: SHERWIN WILLIAMS
COLOR: PAVILION BEIGE
SPEC: SW 7512 | J ALUMINUM STOREFRONT:
MFG: KAWNEER
FINISH: DARK BRONZE | M PAINTED STUCCO:
MFG: SHERWIN WILLIAMS
COLOR: URBANE BRONZE
SPEC: SW 7048 | P PAINTED METAL DOORS:
MFG: SHERWIN WILLIAMS
COLOR: URBANE BRONZE
SPEC: SW 7048 |
| B 8X8X16 C.M.U. BLOCK:
MFG: SUPERLITE
SPEC: SPLIT FACE
COLOR: HOPKI SANDSTONE | E METAL PANELS:
MFG: ATAS
SPEC: DWF-VERTICAL
COLOR: MISSION RED | H PAINTED STUCCO:
MFG: SHERWIN WILLIAMS
COLOR: DRY DOCK
SPEC: SW 7502 | K ROLL UP DOORS:
MFG: JANUS
COLOR: CONTINENTAL BROWN | N PAINTED METAL CANOPY:
MFG: SHERWIN WILLIAMS
COLOR: URBANE BRONZE
SPEC: SW 7048 | Q PAINTED STUCCO:
MFG: SHERWIN WILLIAMS
COLOR: NEUTRAL GROUND
SPEC: SW 7568 |
| C 8X4X16 C.M.U. BLOCK:
MFG: SUPERLITE
SPEC: SPLIT FACE
COLOR: HOPKI SANDSTONE | F METAL PANELS:
MFG: ATAS
SPEC: METAFOR-VERTICAL
COLOR: SIERRA TAN | I PAINTED METAL COPING:
MFG: SHERWIN WILLIAMS
COLOR: URBANE BRONZE
SPEC: SW 7048 | L GLAZING
MFG: SOLARBAN
COLOR: SOLARBAN 90 (2)
SOLARGRAY + CLEAR
VLT: 26% | O PAINTED METAL CANOPY:
MFG: SHERWIN WILLIAMS
COLOR: DRY DOCK
SPEC: SW 7502 | |



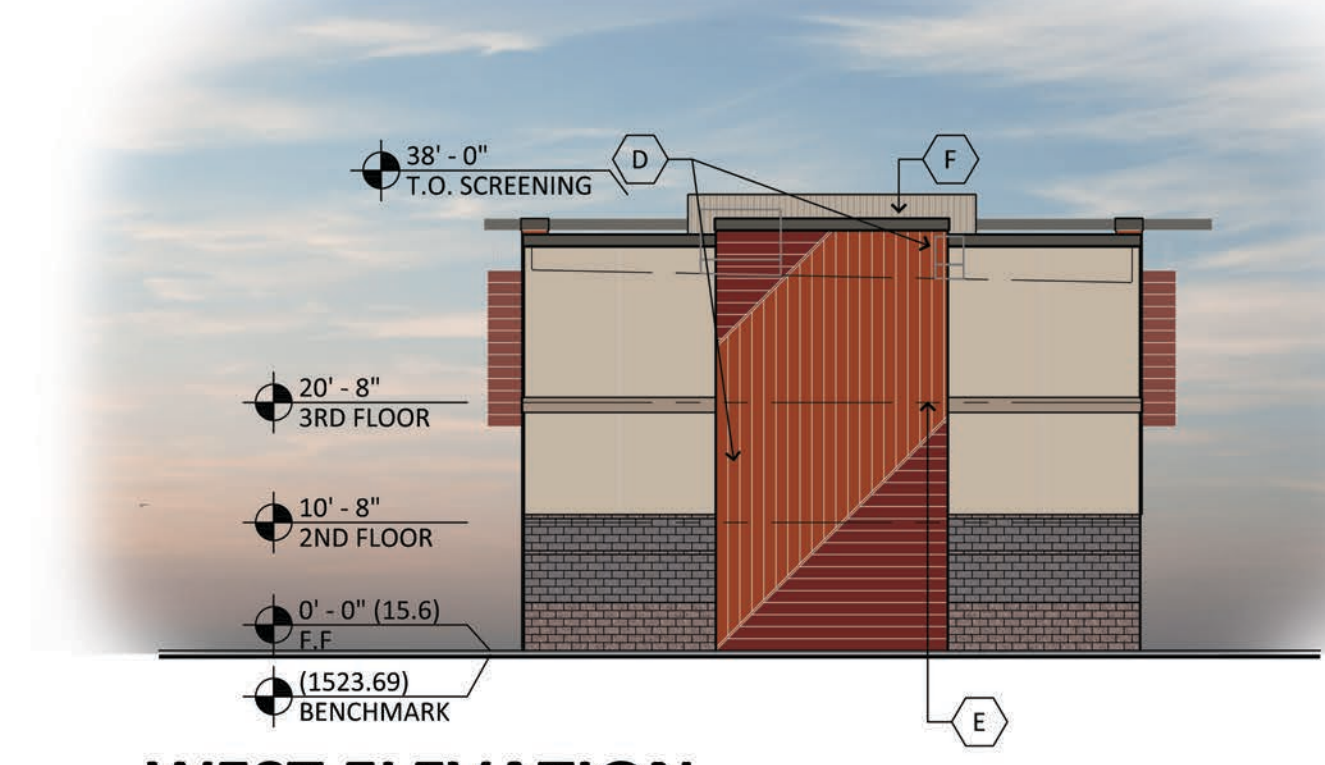
SOUTH ELEVATION

SCALE: 1/16" = 1'-0"



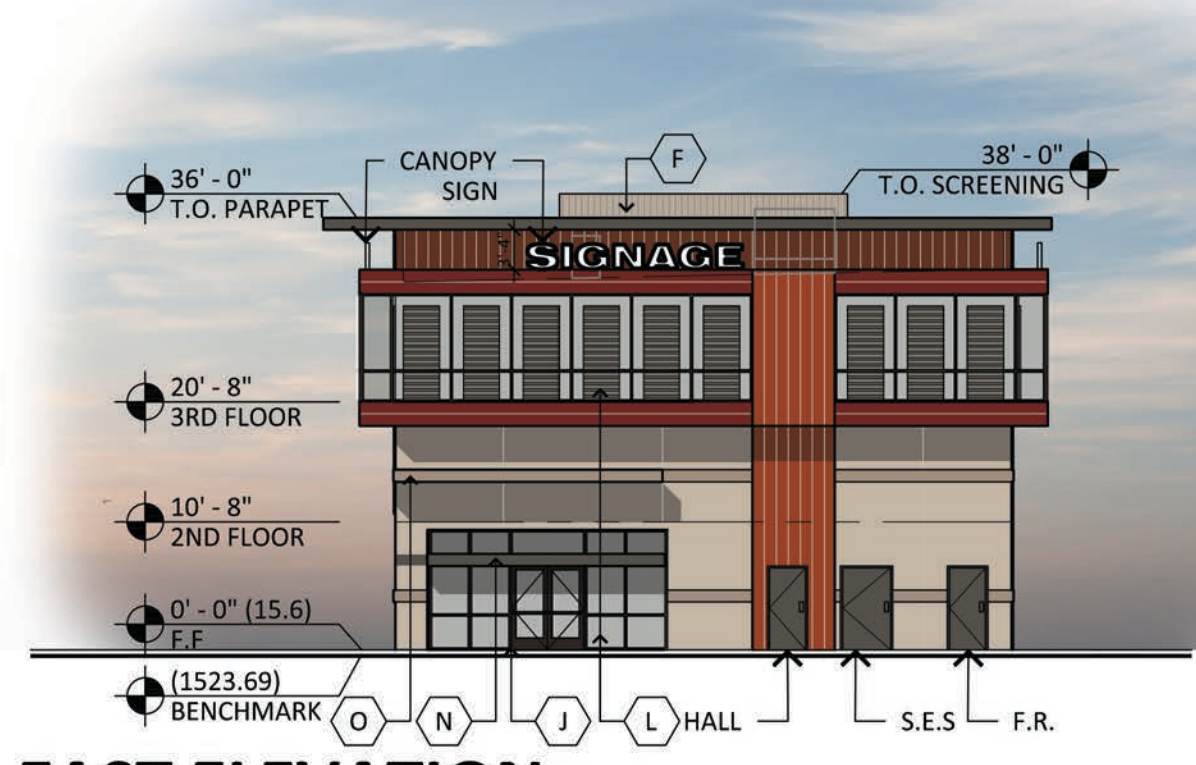
NORTH ELEVATION

SCALE: 1/16" = 1'-0"



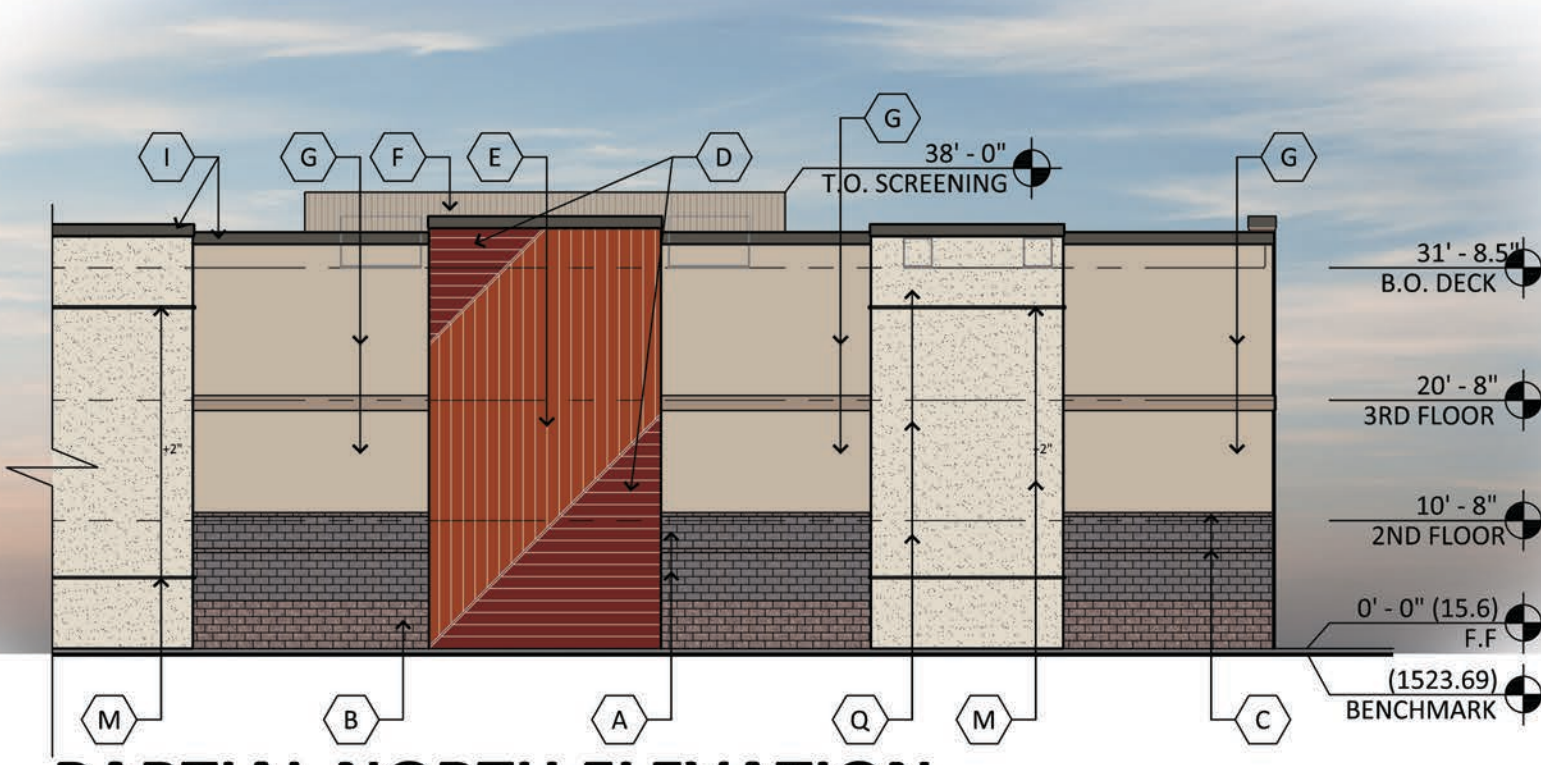
WEST ELEVATION

SCALE: 1/16" = 1'-0"



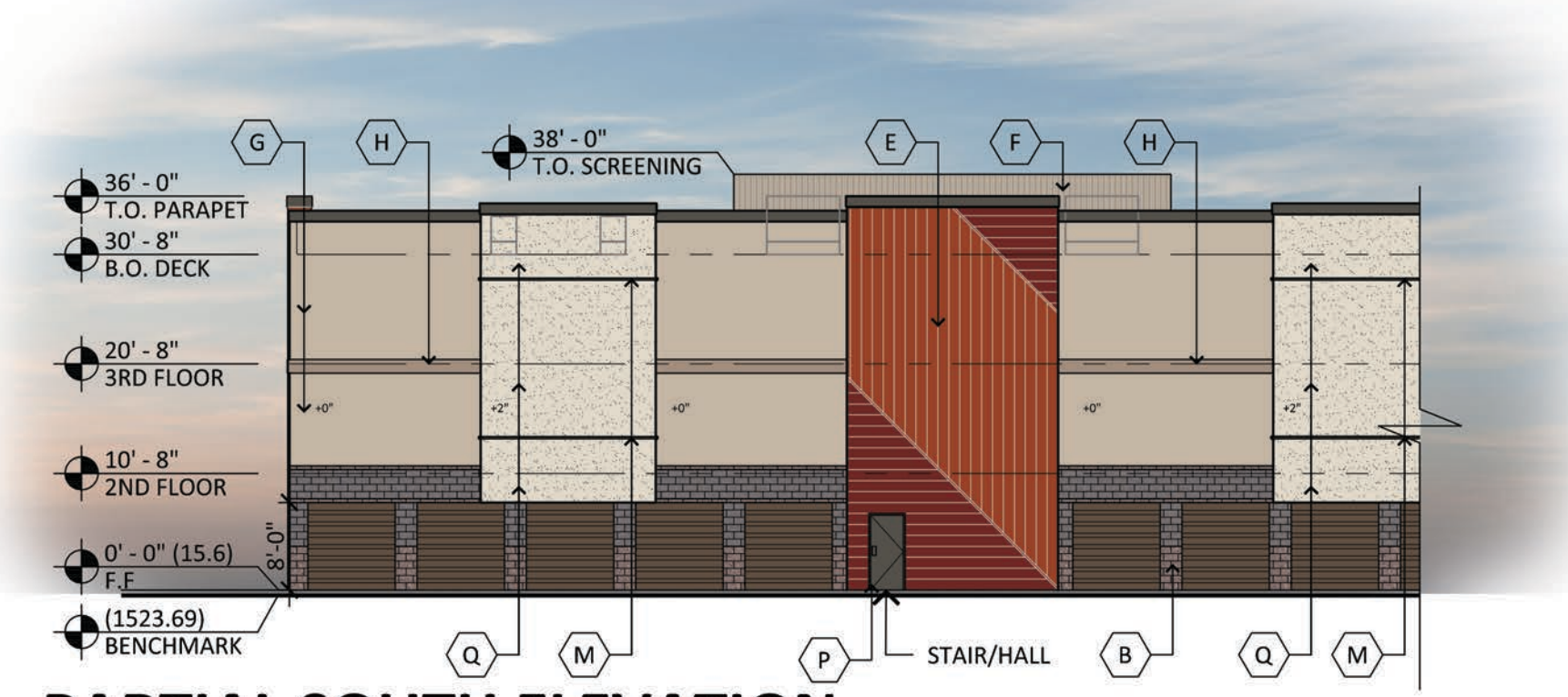
EAST ELEVATION

SCALE: 1/16" = 1'-0"



PARTIAL NORTH ELEVATION

SCALE: 1/16" = 1'-0"



PARTIAL SOUTH ELEVATION

SCALE: 1/16" = 1'-0"

PROPOSED SELF-STORAGE
 NWC PIMA ROAD AND FRANK LLOYD WRIGHT BOULEVARD
 SCOTTSDALE, ARIZONA
 DATE: 12-27-2021 (PRELIMINARY NOT FOR CONSTRUCTION)



© 2021 RKAA ARCHITECTS, INC. ALL RIGHTS RESERVED. THIS DRAWING IS AN INSTRUMENT OF SERVICE. IT IS THE PROPERTY OF RKAA ARCHITECTS, INC. AND MAY NOT BE DUPLICATED, USED OR DISCLOSED WITHOUT WRITTEN PERMISSION OF THE ARCHITECT.

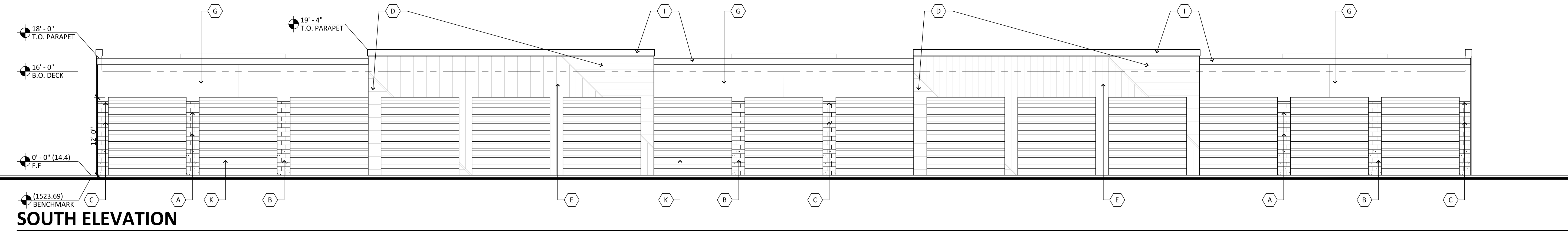
EL-1
 ELEVATION

RKAA# 19120.50



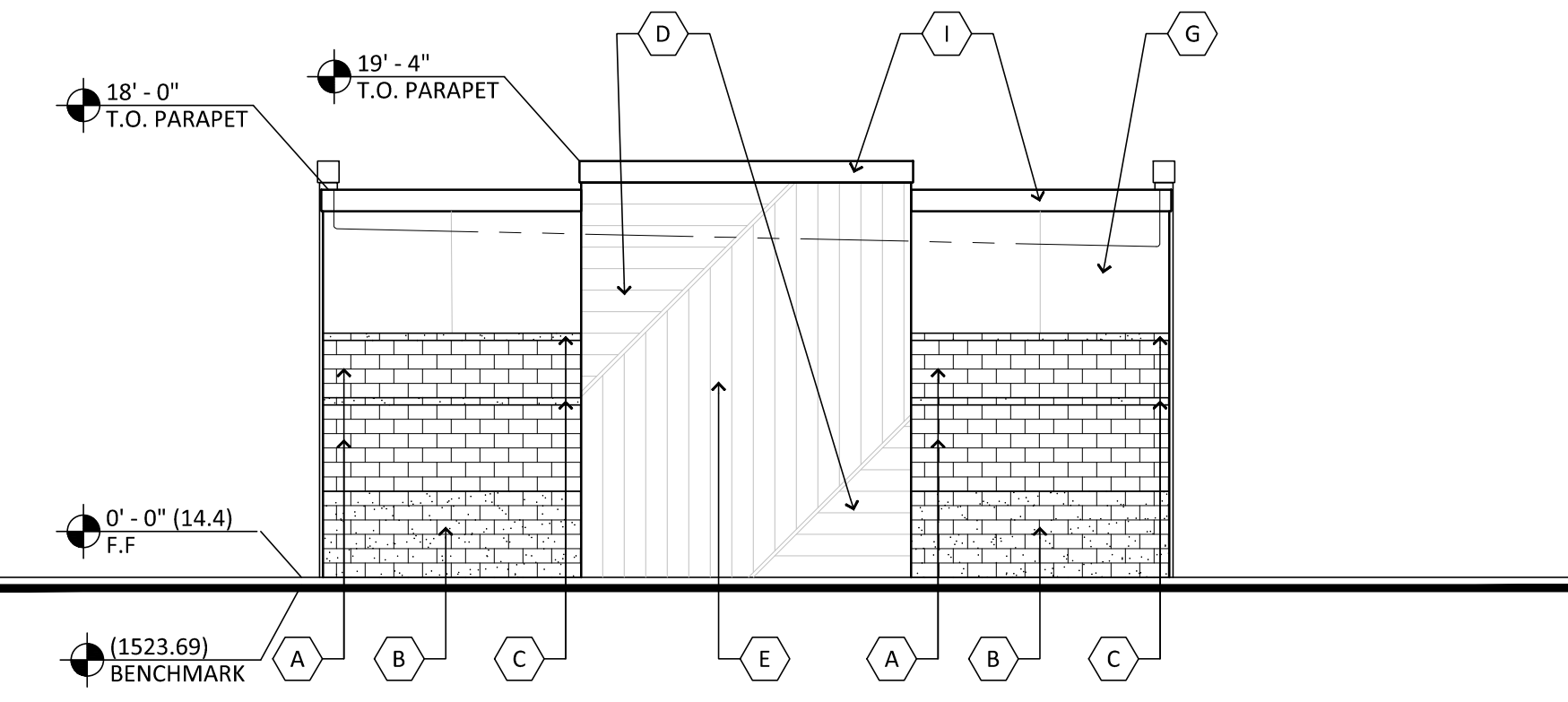
COLOR AND FINISH LEGEND

- | | | | | | |
|--|--|--|---|--|---|
| A 8X8X16 C.M.U. BLOCK:
MFG: SUPERLITE
SPEC: SMOOTH FACE
COLOR: MOJAVE BROWN | D METAL PANELS:
MFG: ATAS
SPEC: DWF-HORIZONTAL
COLOR: REDWOOD | G PAINTED STUCCO:
MFG: SHERWIN WILLIAMS
COLOR: PAVILION BEIGE
SPEC: SW 7512 | J ALUMINUM STOREFRONT:
MFG: KAWNEER
FINISH: DARK BRONZE | M PAINTED STUCCO:
MFG: SHERWIN WILLIAMS
COLOR: URBANE BRONZE
SPEC: SW 7048 | P PAINTED METAL DOORS:
MFG: SHERWIN WILLIAMS
COLOR: URBANE BRONZE
SPEC: SW 7048 |
| B 8X8X16 C.M.U. BLOCK:
MFG: SUPERLITE
SPEC: SPLIT FACE
COLOR: HOP! SANDSTONE | E METAL PANELS:
MFG: ATAS
SPEC: DWF-VERTICAL
COLOR: MISSION RED | H PAINTED STUCCO:
MFG: SHERWIN WILLIAMS
COLOR: DRY DOCK
SPEC: SW 7502 | K ROLL UP DOORS:
MFG: JANUS
SPEC: DWF DOCK
COLOR: CONTINENTAL BROWN | N PAINTED METAL CANOPY:
MFG: SHERWIN WILLIAMS
COLOR: URBANE BRONZE
SPEC: SW 7048 | Q PAINTED STUCCO:
MFG: SHERWIN WILLIAMS
COLOR: NEUTRAL GROUND
SPEC: SW 7568 |
| C 8X4X16 C.M.U. BLOCK:
MFG: SUPERLITE
SPEC: SPLIT FACE
COLOR: HOP! SANDSTONE | F METAL PANELS:
MFG: ATAS
SPEC: METAFOR-VERTICAL
COLOR: SIERRA TAN | I PAINTED METAL COPING:
MFG: SHERWIN WILLIAMS
COLOR: URBANE BRONZE
SPEC: SW 7048 | L GLAZING:
MFG: SOLARBAN
COLOR: SOLARBAN 90 (2)
SOLARGRAY + CLEAR
VLT: 26% | O PAINTED METAL CANOPY:
MFG: SHERWIN WILLIAMS
COLOR: DRY DOCK
SPEC: SW 7502 | |



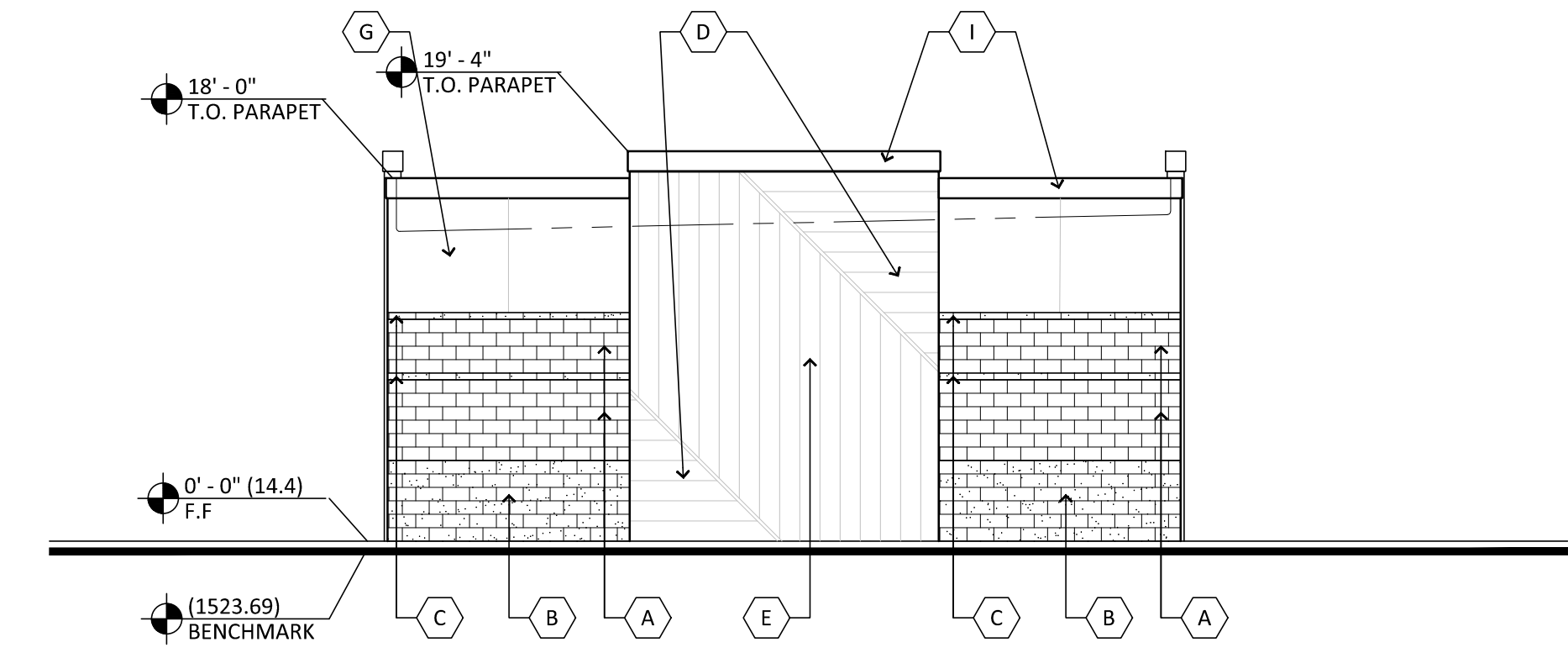
SOUTH ELEVATION

SCALE: 1/8" = 1'-0"



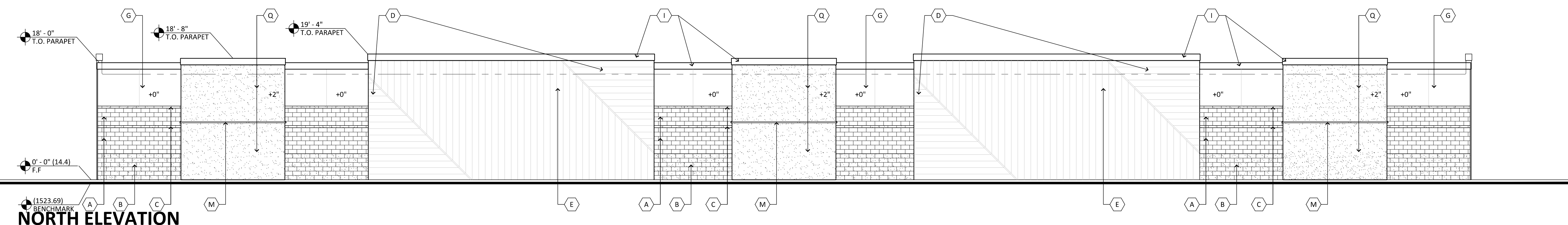
WEST ELEVATION

SCALE: 1/8" = 1'-0"



EAST ELEVATION

SCALE: 1/8" = 1'-0"



NORTH ELEVATION

SCALE: 1/8" = 1'-0"

PROPOSED SELF-STORAGE
 NWC PIMA ROAD AND FRANK LLOYD WRIGHT BOULEVARD
 SCOTTSDALE, ARIZONA
 DATE: 12-27-2021 (PRELIMINARY NOT FOR CONSTRUCTION)



© 2021 RKAA ARCHITECTS, INC. ALL RIGHTS RESERVED. THIS DRAWING IS AN INSTRUMENT OF SERVICE. IT IS THE PROPERTY OF RKAA ARCHITECTS, INC. AND MAY NOT BE DUPLICATED, USED OR DISCLOSED WITHOUT WRITTEN PERMISSION OF THE ARCHITECT.

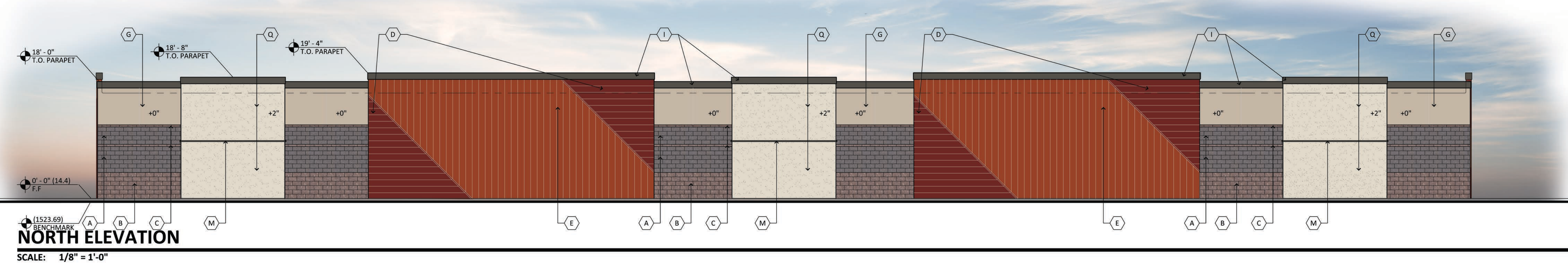
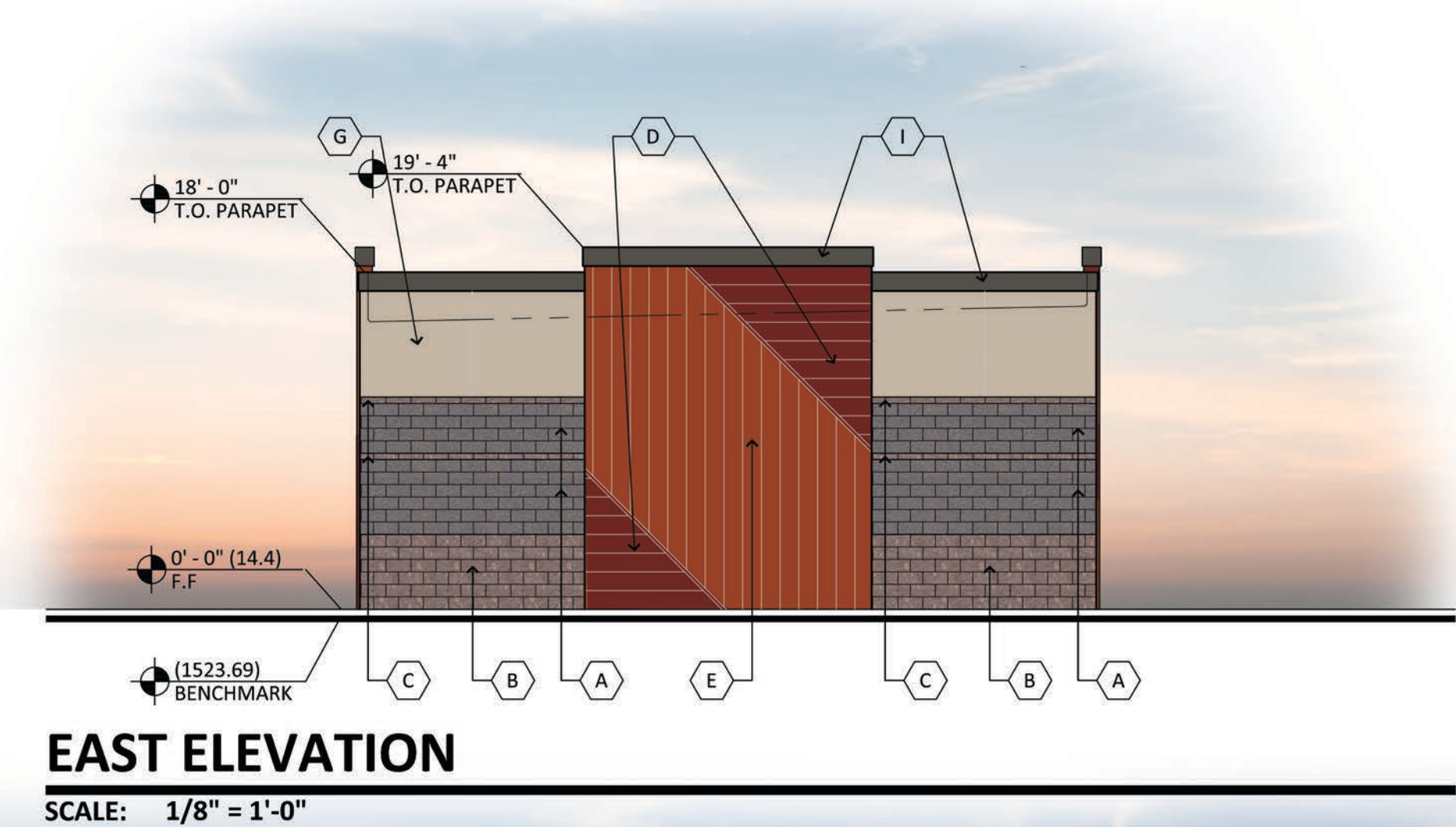
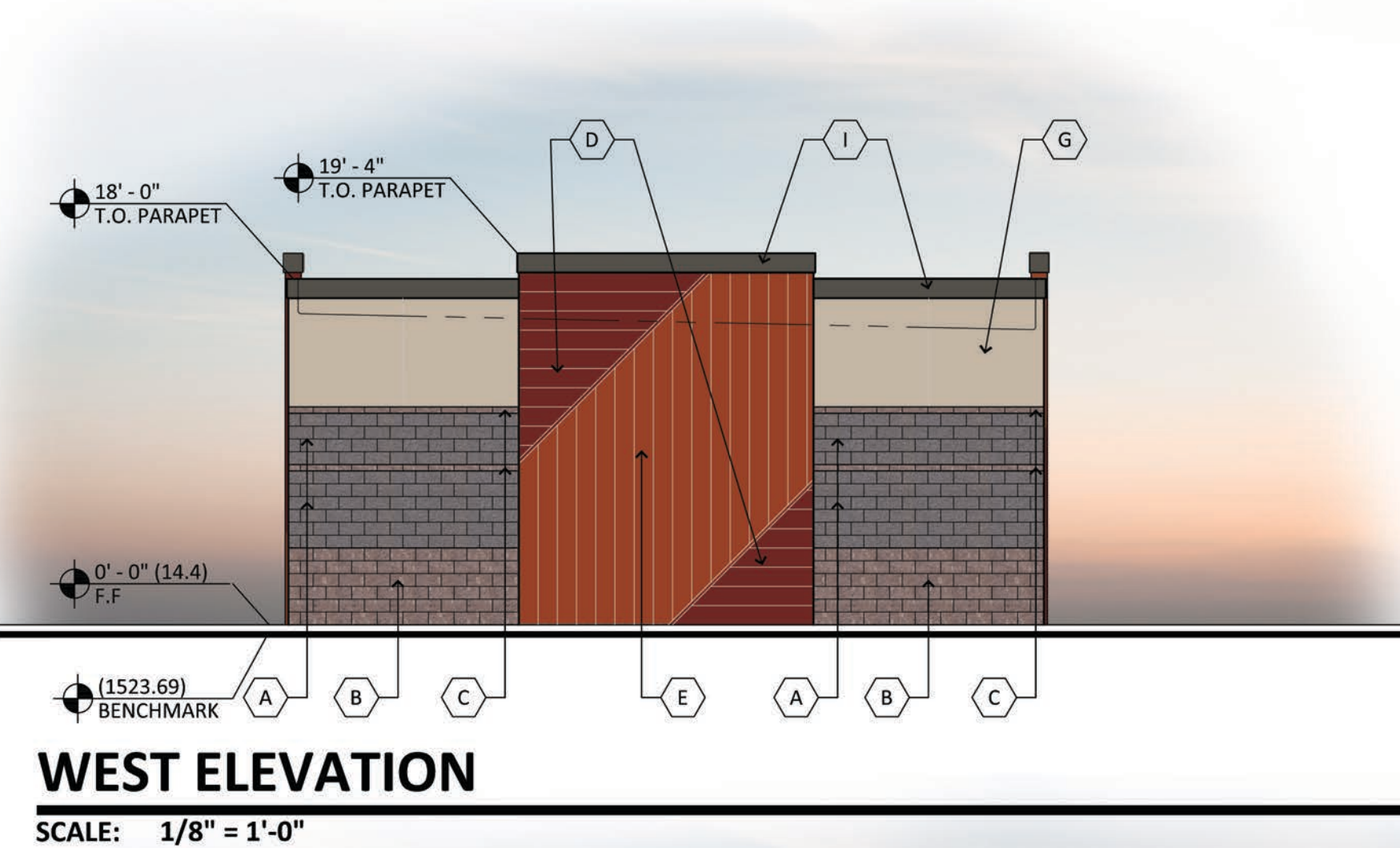
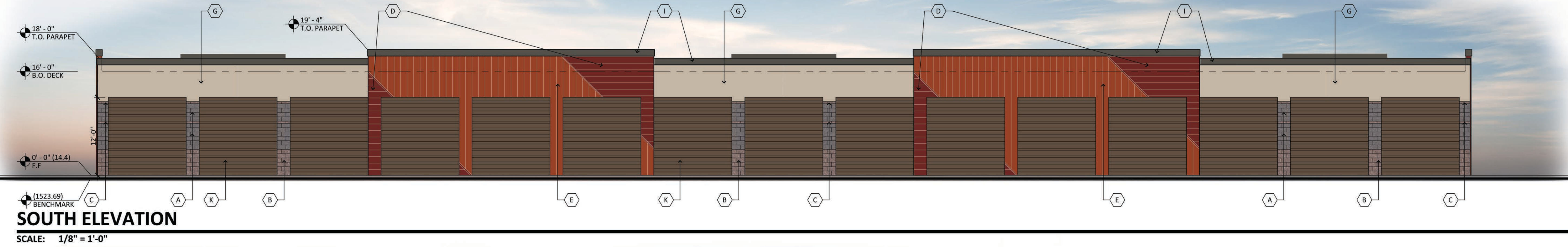
EL-2 ELEVATION

RKAA# 19120.50



COLOR AND FINISH LEGEND

- A** 8X8X16 C.M.U. BLOCK:
MFG: SUPERLITE
SPEC: SMOOTH FACE
COLOR: MOJAVE BROWN
- B** 8X8X16 C.M.U. BLOCK:
MFG: SUPERLITE
SPEC: SPLIT FACE
COLOR: HOP! SANDSTONE
- C** 8X4X16 C.M.U. BLOCK:
MFG: SUPERLITE
SPEC: SPLIT FACE
COLOR: HOP! SANDSTONE
- D** METAL PANELS:
MFG: ATAS
SPEC: DWF-HORIZONTAL
COLOR: REDWOOD
- E** METAL PANELS:
MFG: ATAS
SPEC: DWF-VERTICAL
COLOR: MISSION RED
- F** METAL PANELS:
MFG: ATAS
SPEC: METAFOR-VERTICAL
COLOR: SIERRA TAN
- G** PAINTED STUCCO:
MFG: SHERWIN WILLIAMS
COLOR: PAVILION BEIGE
SPEC: SW 7512
- H** PAINTED STUCCO:
MFG: SHERWIN WILLIAMS
COLOR: DRY DOCK
SPEC: SW 7502
- I** PAINTED METAL COPING:
MFG: SHERWIN WILLIAMS
COLOR: URBANE BRONZE
SPEC: SW 7048
- J** ALUMINUM STOREFRONT:
MFG: KAWNEER
FINISH: DARK BRONZE
- K** ROLL UP DOORS:
MFG: JANUS
COLOR: CONTINENTAL BROWN
- L** GLAZING
MFG: SOLARBAN
COLOR: SOLARBAN 90 (2)
SOLARGRAY + CLEAR
VLT: 26%
- M** PAINTED STUCCO:
MFG: SHERWIN WILLIAMS
COLOR: URBANE BRONZE
SPEC: SW 7048
- N** PAINTED METAL CANOPY:
MFG: SHERWIN WILLIAMS
COLOR: URBANE BRONZE
SPEC: SW 7048
- O** PAINTED METAL CANOPY:
MFG: SHERWIN WILLIAMS
COLOR: DRY DOCK
SPEC: SW 7502
- P** PAINTED METAL DOORS:
MFG: SHERWIN WILLIAMS
COLOR: URBANE BRONZE
SPEC: SW 7048
- Q** PAINTED STUCCO:
MFG: SHERWIN WILLIAMS
COLOR: NEUTRAL GROUND
SPEC: SW 7568



PROPOSED SELF-STORAGE
 NWC PIMA ROAD AND FRANK LLOYD WRIGHT BOULEVARD
 SCOTTSDALE, ARIZONA
 DATE: 12-27-2021 (PRELIMINARY NOT FOR CONSTRUCTION)



© 2021 RKAA ARCHITECTS, INC. ALL RIGHTS RESERVED. THIS DRAWING IS AN INSTRUMENT OF SERVICE. IT IS THE PROPERTY OF RKAA ARCHITECTS, INC. AND MAY NOT BE DUPLICATED, USED OR DISCLOSED WITHOUT WRITTEN PERMISSION OF THE ARCHITECT.

EL-2 ELEVATION
 RKAA# 19120.50

