



# METRO FIRE EQUIPMENT, INC.

63 S. Hamilton Place, Gilbert, AZ 85233 • 3851 N. Oracle Road, Tucson, AZ 85705  
 Main (480) 464-0509 • Fax (480) 962-5372 • Tucson (520) 888-0694 • www.metrofireaz.com  
 AZ ROC# C-16:111021 • CR-67:103313 • CR-5: 213027 • CR-80:295875 • R-16:166777

## Hydrant Flow Test Report

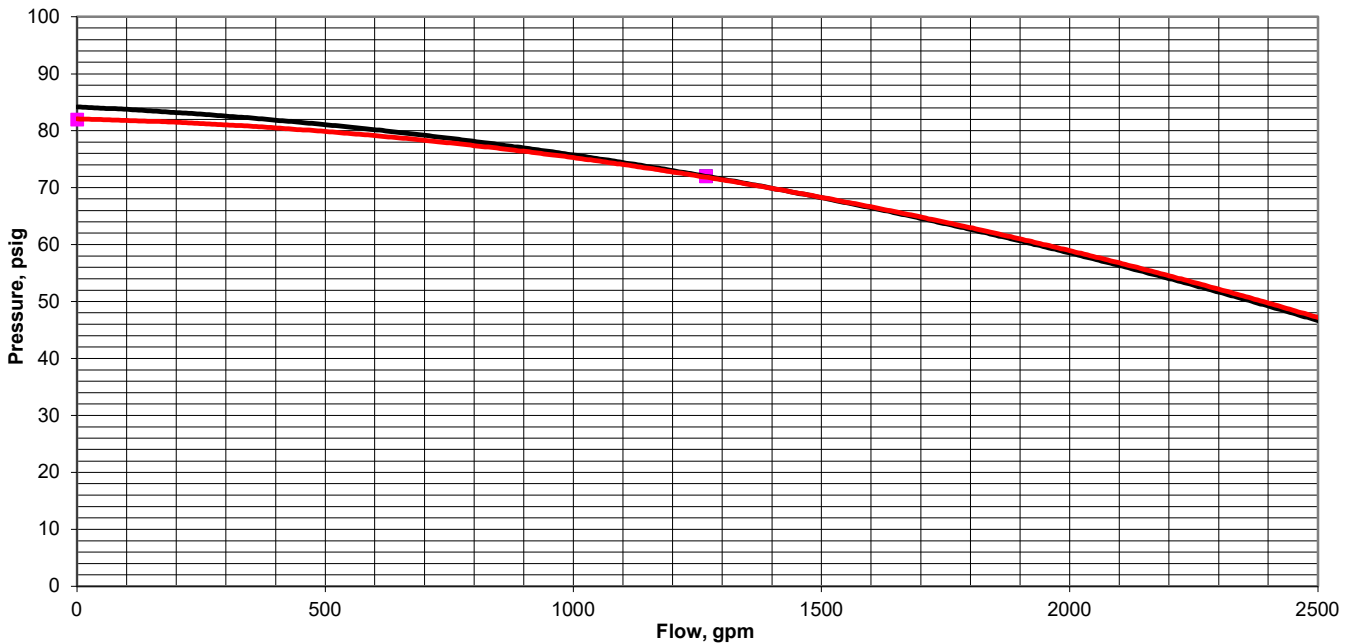
LOCATION: 11420 East Shea Boulevard, Scottsdale, AZ DATE: 2/10/2021  
 TEST BY: Metro Fire Equipment TIME: 7:00 AM  
 WATER SUPPLIED BY: City of Scottsdale  
 PURPOSE OF TEST: Water Curve Data

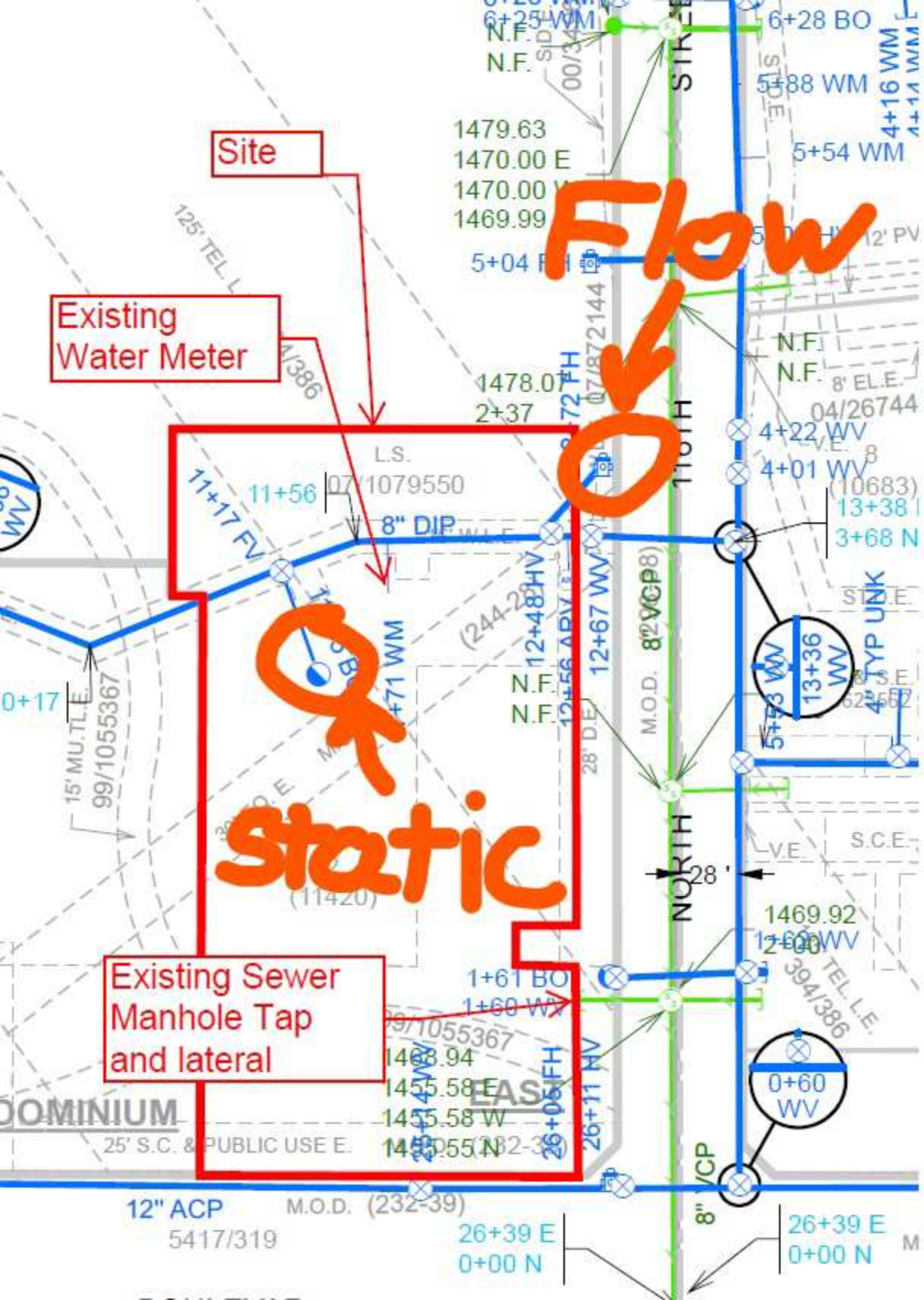
### DATA

FLOW HYDRANT(S)	A1	A2	
SIZE OPENING:	2.5	2.5	
COEFFICIENT:	0.9		
PITOT READING:	57	0	
GPM:	1267	0	
TOTAL FLOW DURING TEST:	1267	GPM	
STATIC READING:	82	PSI	RESIDUAL: 72 PSI

**ADJ. STATIC: 82 PSI      RESIDUAL: 72 PSI**  
**ADJ. FLOW: AT 20 PSI RESIDUAL 3393 GPM      AT 0 PSI 3946 GPM**

Results of this flow test identify water system characteristics for the date, time, and locations of this test only. Pressure and flows within the water system vary of time, it is expected and should be considered when preparing designs based upon fire flow test data. Numerous factors affect the water system, such as water level fluctuations in reservoirs, operating pressure ranges at booster pump stations, elevations at point of use, daily demand fluctuations, seasonal demands, emergency demands, water treatment plant availability, increased demands due to growth, operation/maintenance schedules, etc.





0 50 100 200

The map scale of 1" = 100' is based on a full size print of 30" x 36"

# WATER & SEWER

QUARTER SECTION MAP

# 29-55

SW 1/4 SEC. 22 T3N R5E